



# Parts Manual

Mfg. No: 7800935-00  
REX210, 33" 14.5 Gross TP Hydro Drive  
REX110 Series

1692125 - Cart, Dump (10 Cu. Ft.).....

7600199 - Grass Catcher, Single.....

7600192 - Grass Catcher, Twin.....

1696324 - Cover, Tractor.....

7600071 - Cover, Tractor.....

7600197YP - Headlight Kit.....

7034168BZYP - High Lift Blade, 33".....

Not For  
Reproduction

---

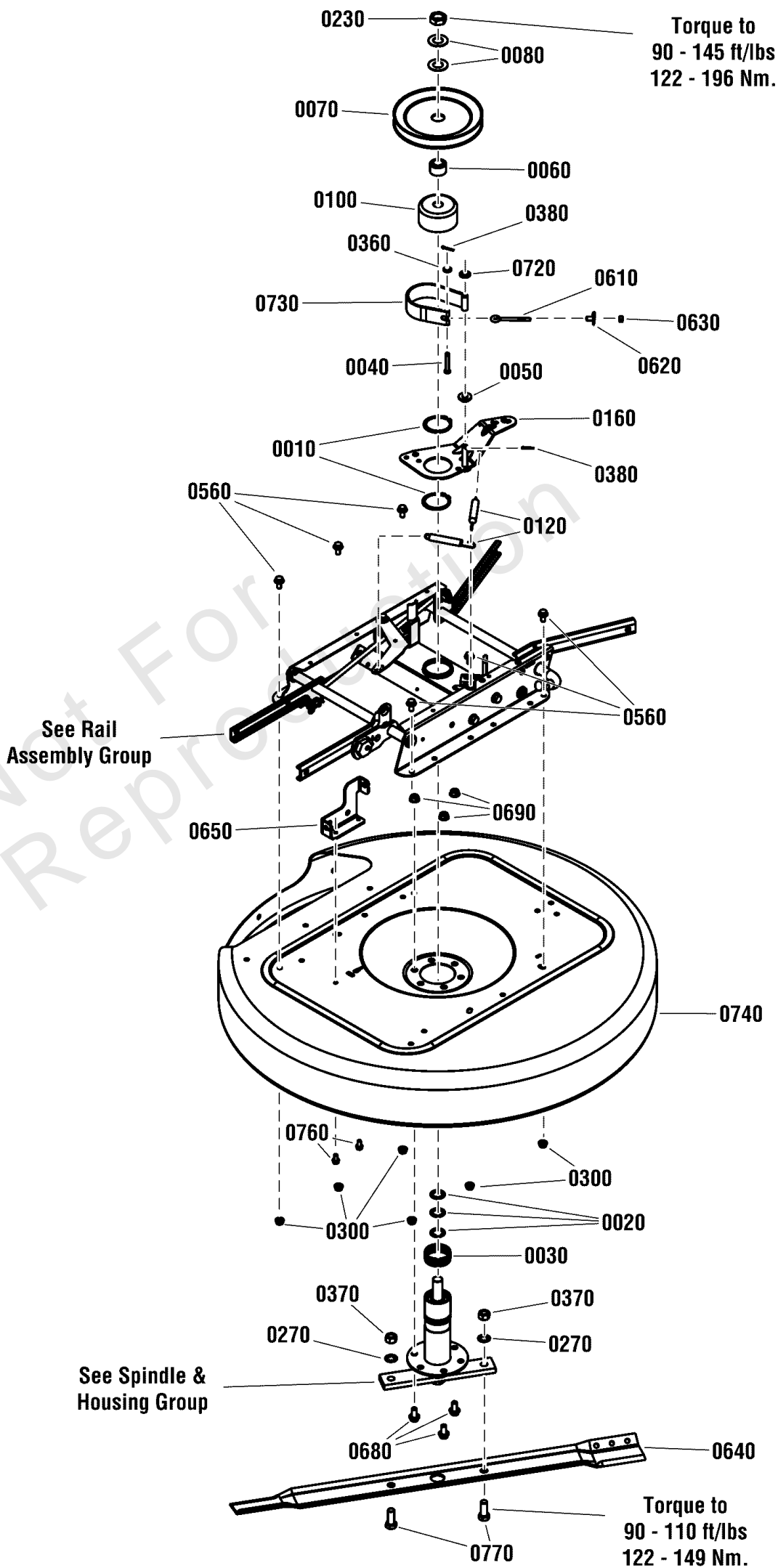
<b>Model Components</b>	<b>Page</b>
33" Deck Assembly.....	4
33" Deck Group.....	6
Console & Gas Tank Group.....	8
Decals.....	10
Electrical Group.....	12
Engine Group.....	14
Front Axle Group 13" Wheels - 00 & 01 Series.....	16
Guard Group.....	18
Hydro Drive Group.....	20
Main Frame Group.....	22
Rail Assembly.....	26
Seat Group.....	28
Spindle & Housing Assembly.....	30
Steering Tower Group.....	32
Wheel Group.....	34
Torque Specification Chart.....	36

Not For  
Reproduction

# 33" Deck Assembly

Note: Unless noted otherwise, use the standard torque specifications

Mfg. No: 7800935-00



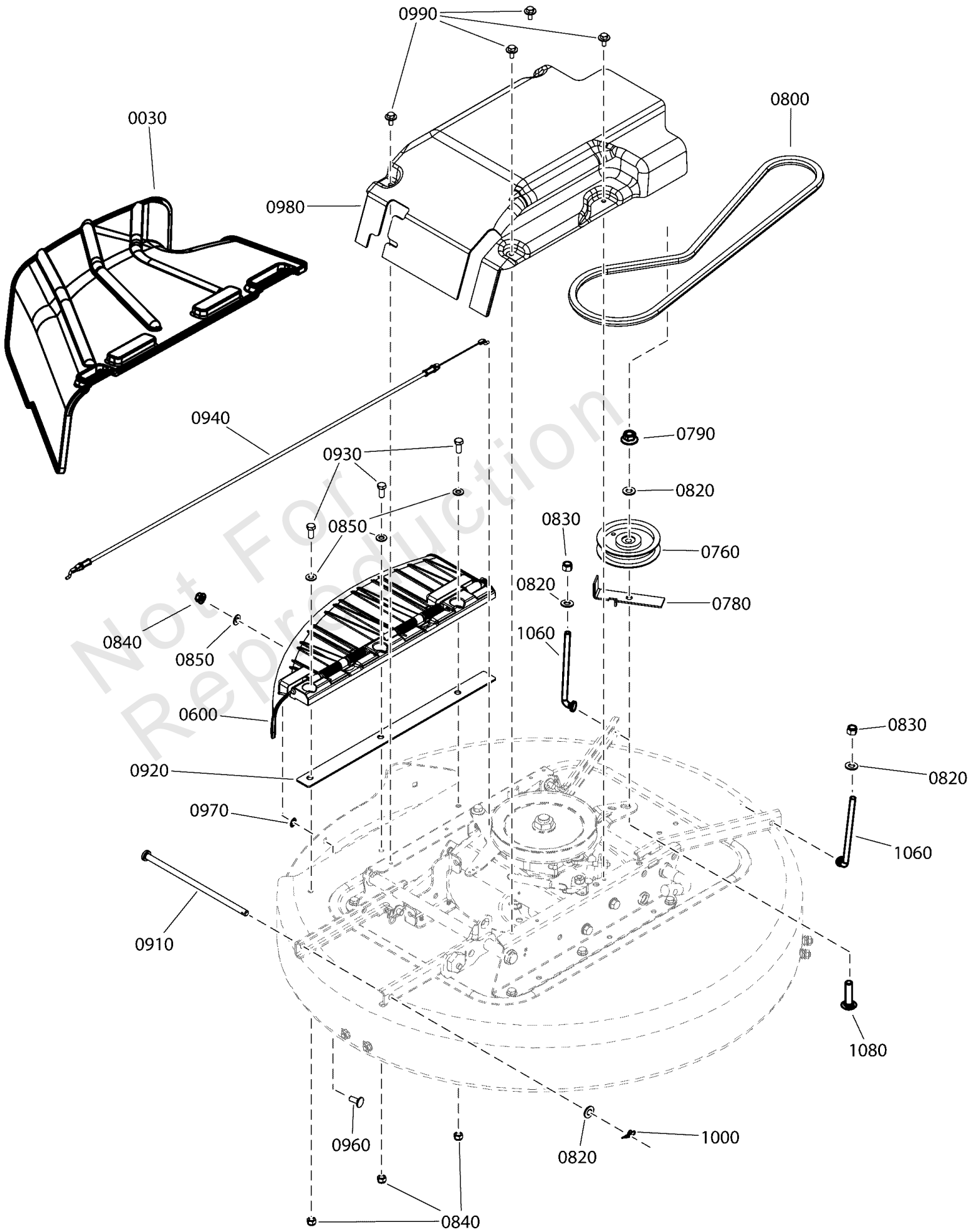
## 33" Deck Assembly

REF NO	PART NO	QTY	DESCRIPTION
0010	7010740YP	2	RING, 2 External Retaining
0020	7010935SM	3	FW, .77X1.13X.06
0030	7012670YP	1	RING, 2 ID x 3/4 High, Tolerance
0040	7014304YP	1	PIN, 1/4 x 1-5/8 Clevis
0050	7014314YP	1	SPACER, .31 I.D. x .39 O.D. x 1 Nylon
0060	7015290YP	1	HUB, Pulley, PM
0070	7018781YP	1	PULLEY, Deck Spindle, 6.95 OD
0080	7032027SM	2	WASHER, 49/64x1-1/2x.06, Flat
0100	7035378YP	1	DRUM, Brake Spindle (3" OD, 1.6" Tall)
0120	7036521YP	2	SPRING, Extension, 4 x 1/2 Diameter
0160	706001	1	WELDMENT, Idler Arm, RER
0230	7074467SM	1	NUT, 3/4-16 Hex Jam, GR 8
0270	7090509YP	2	WASHER, 1/2 Internal Tooth Lock, BZ
0300	703409	12	NUT, 5/16-18, GR5
0360	71067MA	1	WASHER, 1/4, Flat, GR5 Zinc/Clear
0370	7091939YP	2	NUT, 1/2-20 Hex, GR 5 ZP
0380	331613MA	2	PIN, 3/32 X 3/4, GR5, Cotter, Zinc/Clear
0560	703823	6	BOLT, 5/16-18X0.625
0610	7014302YP	1	EYE-BOLT, 1/4-20 x 2-7/8 ZP
0620	7106120YP	1	T-NUT, 1/4-20 (Bent End)
0630	703127	1	NUT
0640	7019523BZYP	1	BLADE, 33" (With Air Lift Holes)
0650	7301280BMYP	1	BRACKET, Blade Engagement Cable
0680	703955	3	BOLT, 3/8-16X0.75
0690	703333	3	NUT, 3/8-16
0720	703590	1	WASHER, FLAT, .406
0730	7503086YP	1	ASSEMBLY, BRAKE BAND
0740	7061972YP	1	KIT, 33" Deck Replacement (Includes Decals)
0760	B4300GS	2	SCREW, 1/4-20 X .500, Hex HD, Self-Tap, Zinc/Clear
0770	7090491YP	2	SCREW, 1/2-20 x 1-1/4 Hex Head Cap, GR5
0780	703798	6	BOLT, 5/16-18X0.50

# 33" Deck Group

Note: Unless noted otherwise, use the standard torque specifications

Mfg. No: 7800935-00



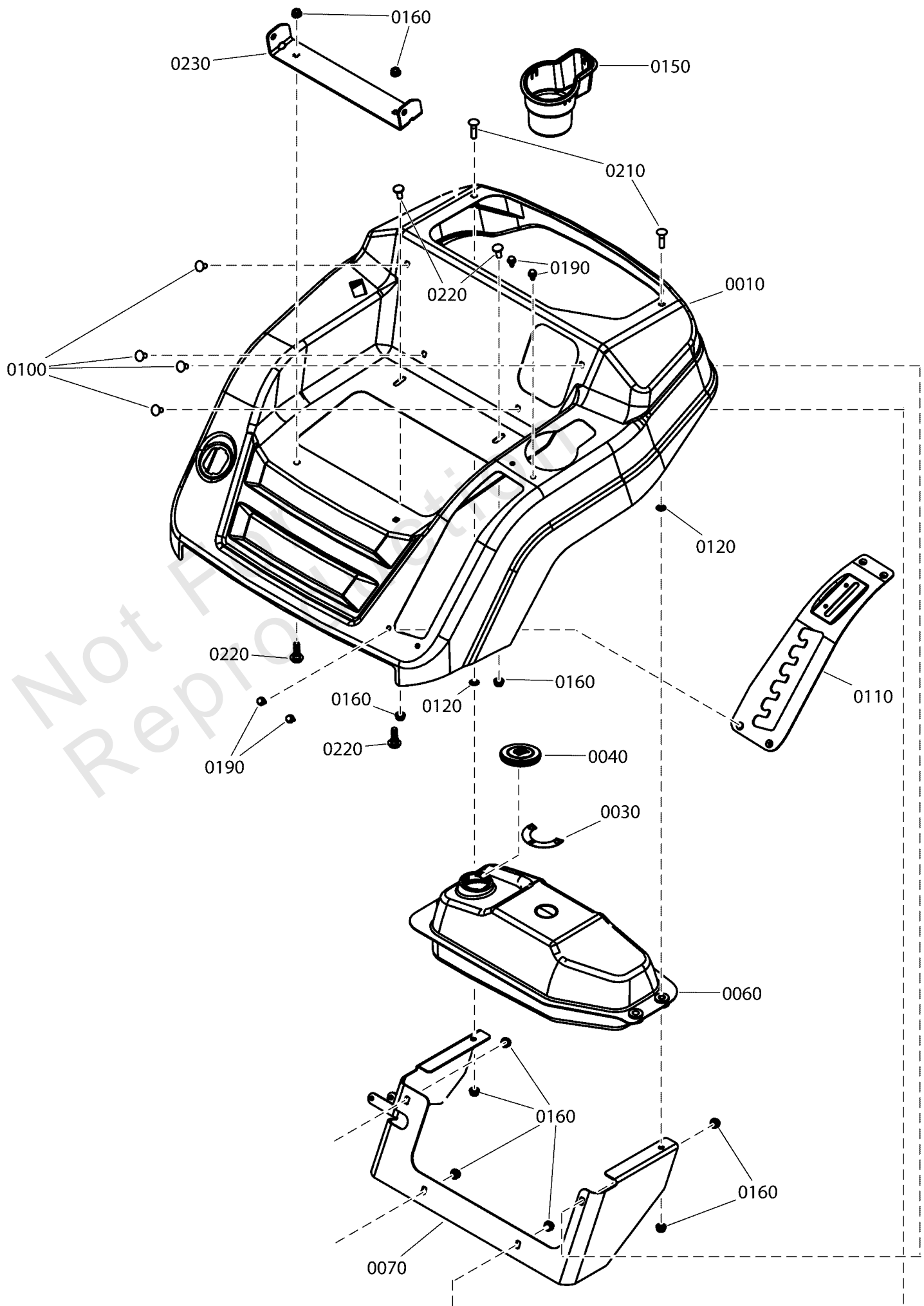
### 33" Deck Group

REF NO	PART NO	QTY	DESCRIPTION
0030	7105326YP	1	CHUTE, Side Discharge, 28"/33"
0600	7105871YP	1	ASSEMBLY, Mulching Cover, RER, 33"
0600-10	704005	1	PUSHNUT, CAP, 1/4
0600-20	7103309YP	2	SPRING, Torsion, Rear Door (Not Shown)
0600-30	7105346YP	1	HINGE, Chute, RER, 28/33 (Not Shown)
0600-40	7105689YP	1	ROD, Chute .25 OD, 17.62 Long (Not Shown)
0600-50	7105870YP	1	COVER, Mulching, RER, 33"
0760	7018574SM	1	IDLER, Flat, 4 1/8
0780	7032111YP	1	RESTRICTOR, Belt, 2.18" w/Lock Tab
0790	703893	1	NUT, CNTR LCK, 3/8-16
0800	7106209YP	1	V-BELT, 33" Deck, Hydro Drive (HA 52.18" EL)
0820	703590	4	WASHER, FLAT, .406
0830	71046MA	2	NUT, 3/8-16, Nylock, GR5, Zinc/Clear
0840	703115	3	NUT
0850	703350	5	WASHER
0910	7105733YP	1	ROD, Front Deck Hangar, .38 Dia. X 9.16 Long
0920	7301363BMYP	1	PLATE, 33" Deck Hinge Support
0930	703408	3	CAPSCREW, 5/16-18
0940	7105982YP	1	CABLE, Brake, 37.4 OPC
0960	703185	1	BOLT, Round Head, Short Square Neck
0970	703297	1	RETAINER, GR5, 5/16
0980	7106072YP	1	COVER, Deck Spindle, 28"/33", RER
0990	703054	4	SCREW, 1/4-20X0.625
1000	703355	1	COTTER PIN, 3/8
1060	7106057YP	2	ROD, Rear Deck Lift, 5.5 Long, 3/8-16 Threads
1080	7091945YP	1	BOLT, Carriage, Short Neck, 3/8-16 x 1-1/2

# Console & Gas Tank Group

Note: Unless noted otherwise, use the standard torque specifications

Mfg. No: 7800935-00





## Console & Gas Tank Group

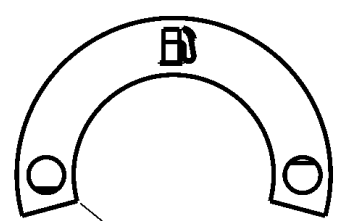
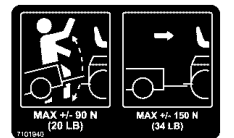
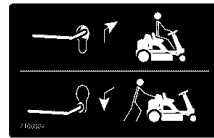
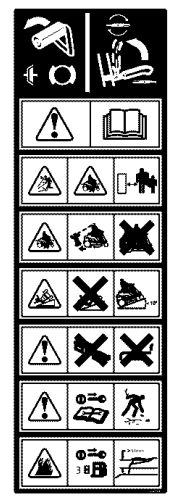
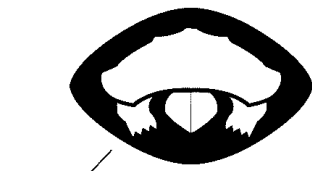
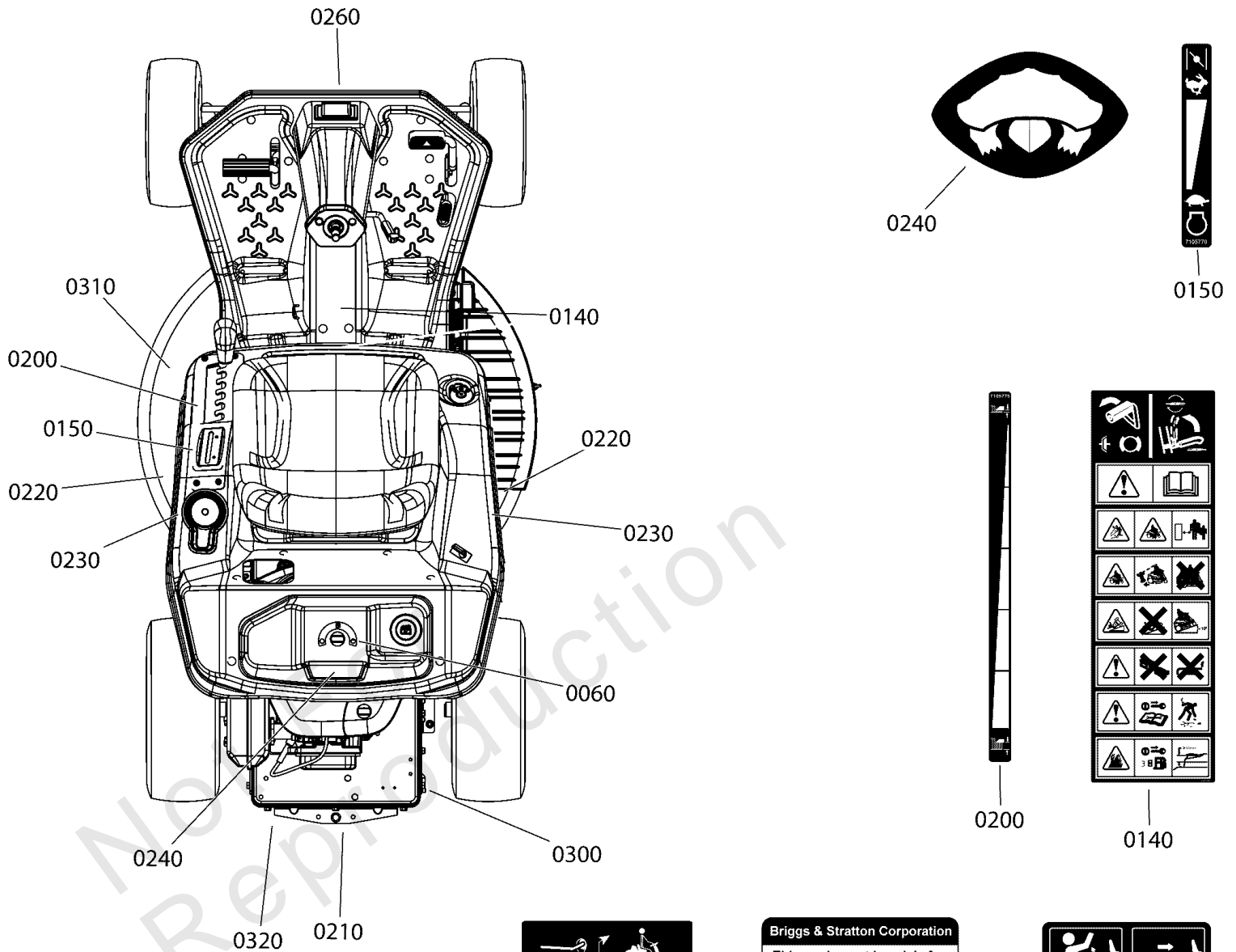
REF NO	PART NO	QTY	DESCRIPTION
0010	7301327DYP	1	CONSOLE, Seat/Controls - Hydro, Red
0030	706328	1	DECAL, Fuel Gauge, EURO RER
0040	1751942YP	1	CAP FUEL, Vented
0060	706137	1	ASSEMBLY, Fuel Tank, W/Gauge, EURO
0070	7301342BMYP	1	BRACKET, Fuel Tank Mounting
0100	703447	4	BOLT, 5/16-18X.625 G5
0110	7301262BMYP	1	PLATE, HOC Detent
0120	703297	2	RETAINER, GR5, 5/16
0150	7105766YP	1	CUP HOLDER
0160	703409	8	NUT, 5/16-18, GR5
0190	703953	4	SCREW, 1/4-20X5/8
0210	703446	2	BOLT, 5/16-18X1.25 G5
0220	703185	2	BOLT, Round Head, Short Square Neck
0230	706334	1	BRACKET, Seat Pivot Support

Not For Reproduction

# Decals

Note: Unless noted otherwise, use the standard torque specifications

Mfg. No: 7800935-00



## Decals

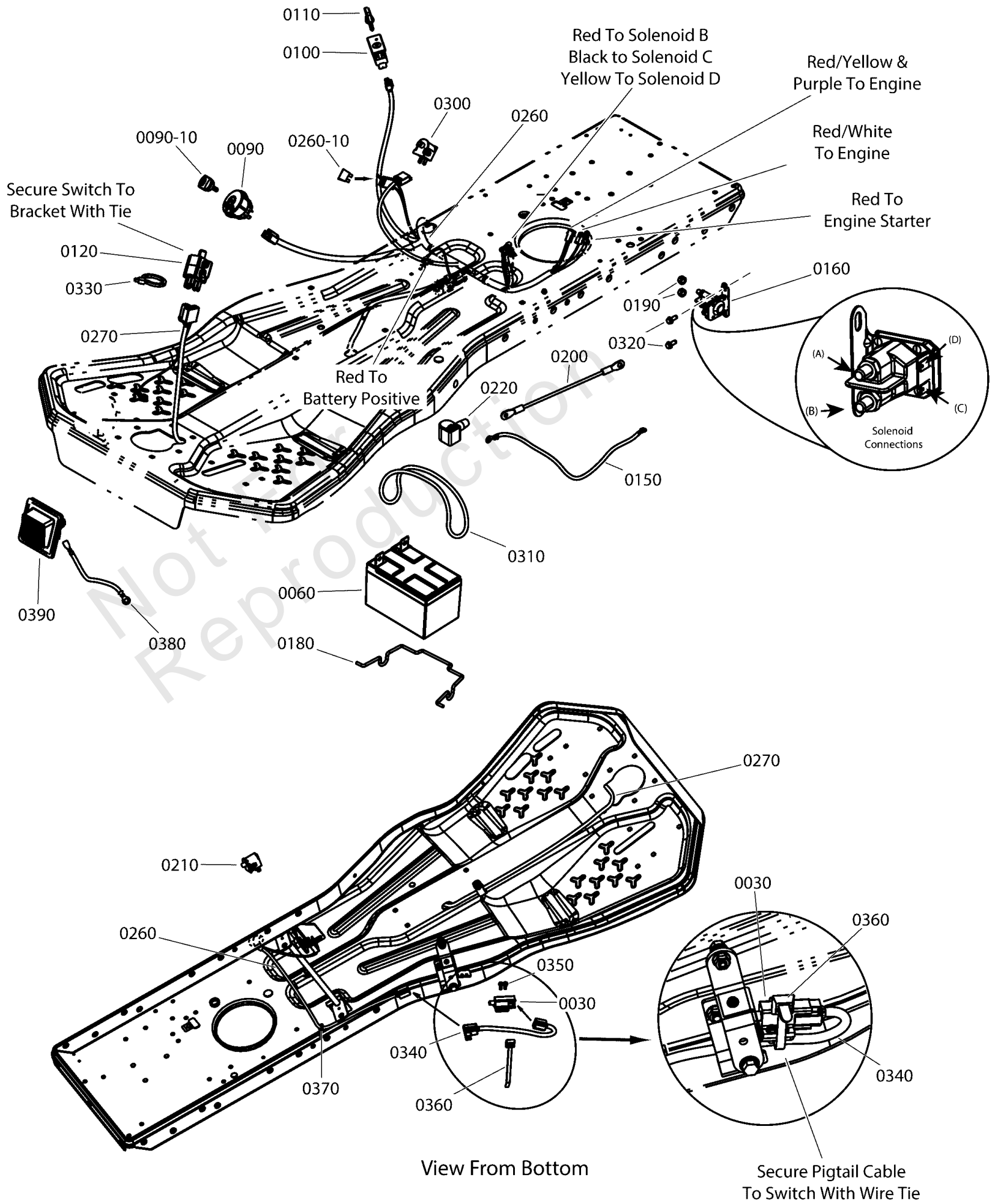
REF NO	PART NO	QTY	DESCRIPTION
0060	706328	1	DECAL, Fuel Gauge, EURO RER
0140	706110	1	DECAL, Warning Panel (Symbols, 3.625" X 11.5")
0150	7105770YP	1	DECAL, Engine Speed
0200	7105775YP	1	DECAL, HOC
0210	7101940YP	1	DECAL, Weight Limitation
0220	706111	2	DECAL, DISCHARGE
0230	1755403YP	2	DECAL, Snapper Logo, 1.8" x 7.23"
0240	1752570YP	1	DECAL, Snapper Turtle
0260	1739983YP	1	DECAL, Snapper, 2.13" x 8.5"
0300	7105924YP	1	DECAL, Hydro RER Roll Release
0310	1755713YP	1	DECAL, Mower Width 33" / 84CM
0320	706112	2	LABEL, Solely For Export - Exempt US Emissions

Not For Reproduction

# Electrical Group

Note: Unless noted otherwise, use the standard torque specifications

Mfg. No: 7800935-00



## Electrical Group

REF NO	PART NO	QTY	DESCRIPTION
0030	7023355YP	1	SWITCH, DPDT
0060	7600188YP	1	BATTERY, 12V 20HR: 190CCA, Sealed (3.9" W, 5.9" L, 4 to 4.7" H)(Includes Cable Attachment Hdwe.)
0060-10	7900056YP	2	FHSNB, YZ
0060-20	703917	2	NUT, HEX FLNG, 10-24
0090	7106169YP	1	SWITCH, IGNITION, DEL
0090-10	7106172YP	1	KEY, Ignition Switch - Pack of 2, CE/CAN
0100	1726556SM	1	SWITCH, Reverse Mow Option Module (Without Key)
0110	1726557SM	1	KEY, RMO Module (Yellow)
0120	1751449YP	1	SWITCH, Plunger, Snap In (NO/NC/NC)
0150	7100636SM	1	CABLE, Battery, 8 Gauge, Black, 20, 1/4 & 5/16 Terminals
0160	1755381YP	1	SOLENOID, L-BRACKET
0180	7105788YP	1	BRACE, Battery
0190	2860750SM	2	NUT-HEX KEPS 5/16-24
0200	1716549SM	1	CABLE, Battery Positive, Red (#6 x 10" Long, 1/4" & 5/16" Ring Terminals)
0210	1732004SM	1	SWITCH-PUSH BUTTON
0220	7105082YP	1	BOOT, Insulator
0260	706331	1	WIRE HARNESS, Main, 14, 15.5HP/17.5HP
0260-10	7023653YP	1	FUSE, 20 Amp
0270	7105697YP	1	HARNESS, Blade Engage, 41"
0300	7023354YP	1	SWITCH, SEAT
0310	1665872SM	1	STRAP, Rubber Battery, .19 SQ, 7.88 OD, Black
0320	703054	2	SCREW, 1/4-20X0.625
0330	703586	1	TIE, SELF LOCKING
0340	706332	1	WIRE HARNESS, Clutch Switch Pig Tail
0350	704060	2	SCREW,HEX, #10-24X.5
0360	7024641YP	1	WIRE TIE, 5.5" L
0370	1730268SM	1	CLIP, Hose, .50" Dia. Push In, Black Plastic
0380	7106051YP	1	WIRE, RER Head Light Ground
0390	7105923YP	1	ASSEMBLY, Head Light (includes Lamp, 12V, 25-30 Lumen LED, 1156 Socket, Type T25-BA15S)
0390-10	1736180YP	1	SOCKET, Single / Twin Light (Includes Gasket)(Not Shown)
0390-20	1755317YP	1	* LAMP, 12VAC 25-30 Lumen LED ((1156 Socket, Type T25-BA15S)(Not Shown)

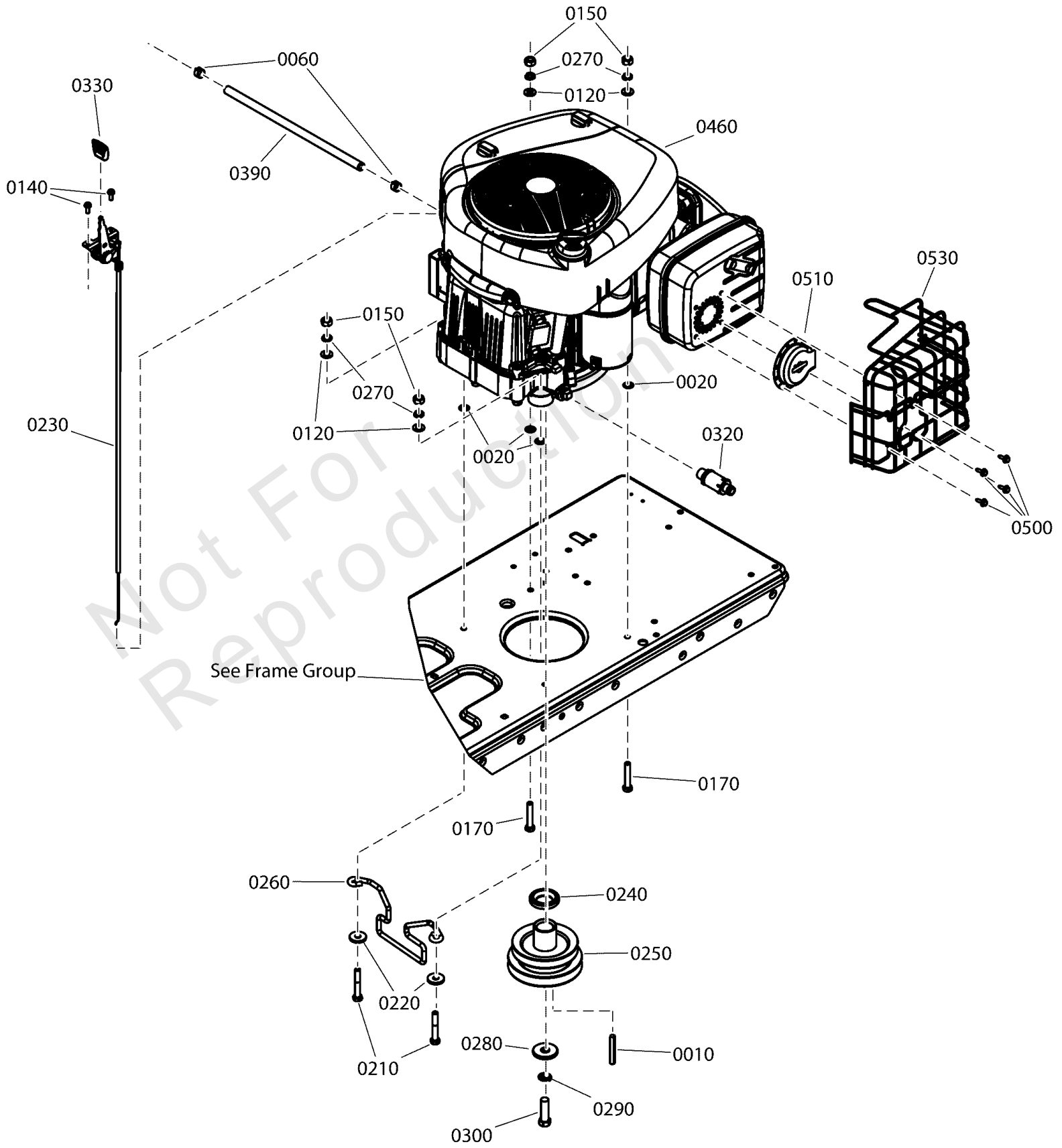
### Footnotes:

Note\* See your local hardware store for replacement bulbs.

# Engine Group

Note: Unless noted otherwise, use the standard torque specifications

Mfg. No: 7800935-00



## Engine Group

REF NO	PART NO	QTY	DESCRIPTION
0010	703890	1	KEYSTOCK, 1/4X2
0020	703297	4	RETAINER, GR5, 5/16
0060	791850	2	CLAMP, Hose
0120	703350	4	WASHER
0140	7090913SM	2	SCREW, 10-24 x 1/2 Hex Washer Self-Tap, Torx, Zinc/Clear
0150	703331	4	NUT, 5/16-24
0170	7091513YP	2	SCREW, 5/16-24X1-3/4
0210	704056	2	CAPSCREW, 5/16-24X2
0220	703298	2	WASHER, 5/16
0230	7105872YP	1	ASSEMBLY, Throttle Control, 27.6 Long, 1.6 Throw
0240	721153MA	1	SPACER, Engine, 1.015 ID, 1.77 OD, .340 Thick
0250	7105938	1	PULLEY, Double Stack 4 & 4.5 OD, 1 ID, 3.255 Tall
0260	7106040BMYP	1	GUIDE, Belt, 1/4 Wire, 1 X 4 ID, 3.55 Tall, 7.66 Mount
0270	703116	4	LCKWSHR
0280	704053	1	WASHER
0290	704007	1	LCKWSHR,7/16,SPLIT RE
0300	720205	1	BOLT, 7/16-20 X 1.5, Hex Patch Lock, G5, ZP
0320	7027972SM	1	OIL VALVE ASSY.
0330	7106008YP	1	KNOB, Molded Paddle, Black
0390	7200116YP	1	HOSE, Fuel, Low Perm, 1/4" ID X 14"
0460	31R777-0009-B1	1	* ENGINE, B&S Intek, SER 4175, Mod. #31R777-0009-B1
0500	690367	4	SCREW
0510	795036	1	DEFLECTOR, Muffler
0530	706336	1	GUARD, Muffler

---

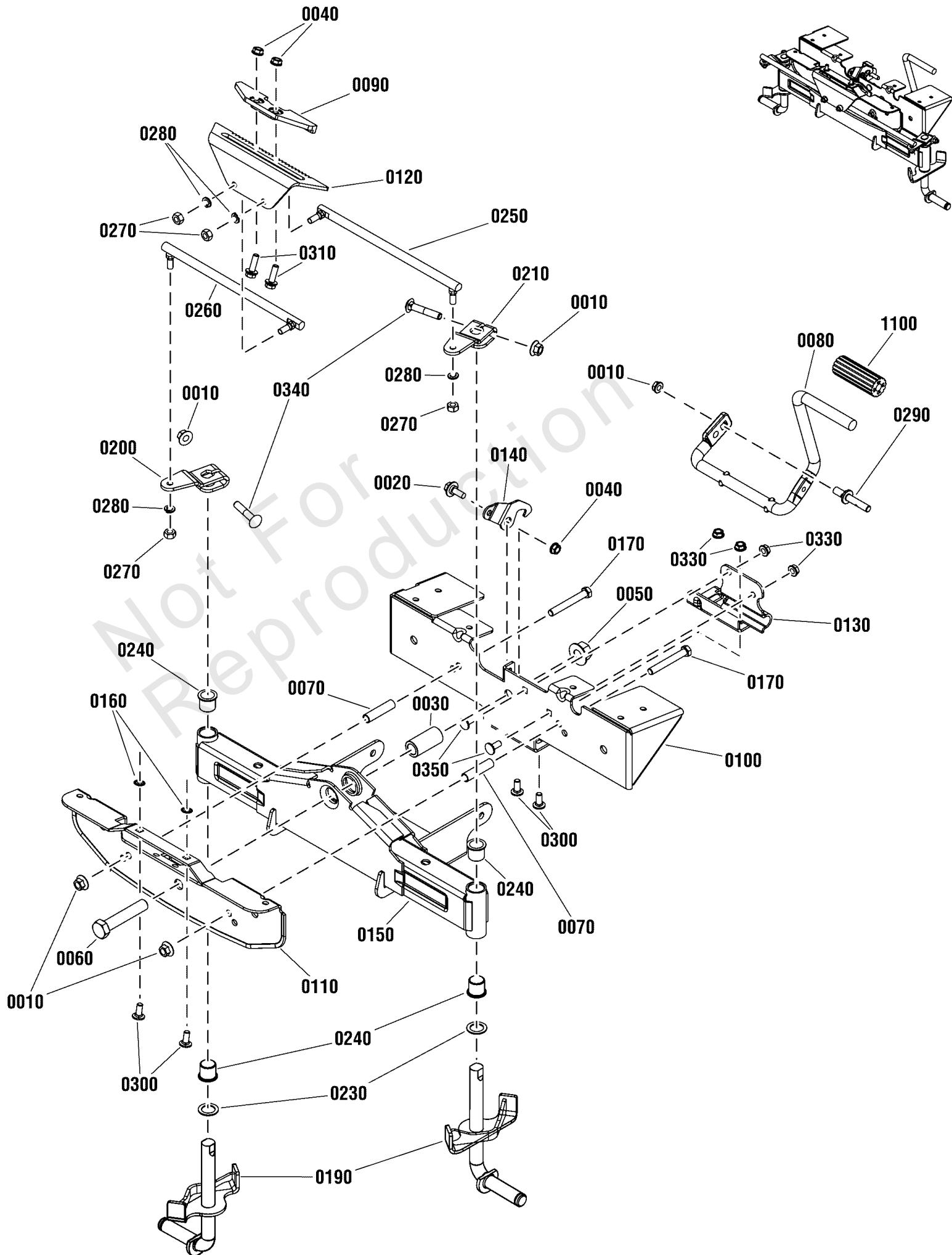
**Footnotes:**

Note: \* Purchase engine parts from engine manufacture dealer.

# Front Axle Group 13" Wheels - 00 & 01 Series

Note: Unless noted otherwise, use the standard torque specifications

Mfg. No: 7800935-00





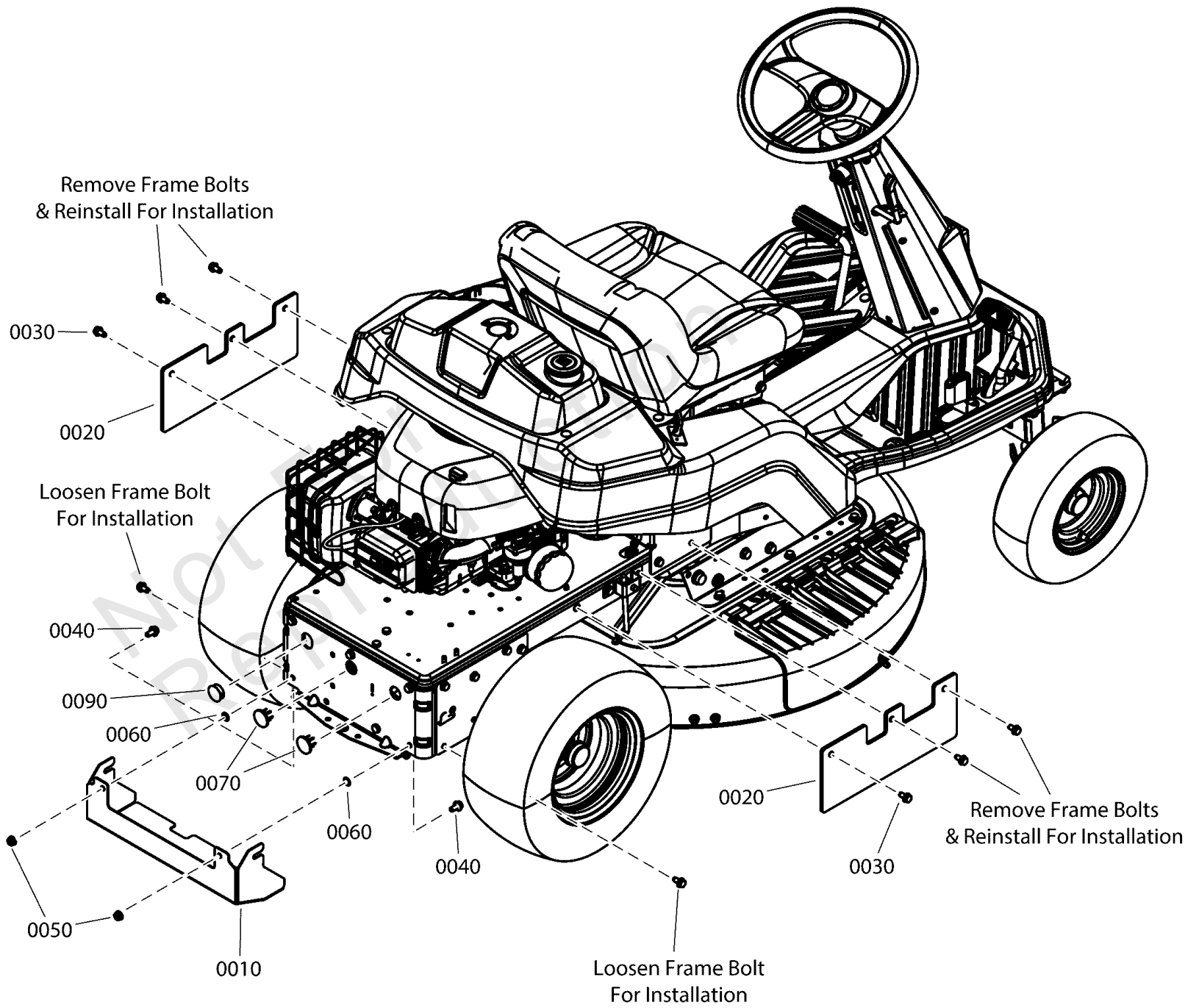
## Front Axle Group 13" Wheels - 00 & 01 Series

REF NO	PART NO	QTY	DESCRIPTION
0010	703893	5	NUT, CNTR LCK, 3/8-16
0020	1716654SM	1	BOLT, 5/16-18 X .75, .50 Shoulder G5 YEL
0030	1738193YP	1	SPACER, .641 ID X.980 OD X 2.0 Long
0040	704067	3	NUT, HEX FLNG,5/16-18
0050	2860646SM	1	NUT, 5/8-11, Hex Flange Two Way Lock, Yellow
0060	2860744SM	1	CAPSCREW, Hex Head, 5/8-11 x 3 1/4
0070	7026595YP	2	SPACER, .495 OD X .390 ID X 2.038 Long
0080	7105142YP	1	PEDAL, Brake
0090	7105857YP	1	PLATE, Rack Guide
0100	7301259YP	1	BRACKET, Rear Axle
0110	7301282YP	1	BRACKET, Front Axle
0120	7301283YP	1	RACK, Steering
0130	7301317YP	1	BRACKET, Brake Pedal
0140	7301351YP	1	PLATE, Park Brake
0150	7400323YP	1	WELDMENT, Axle
0160	703297	2	RETAINER, GR5, 5/16
0170	703133	2	HHCS,3/8-16X2.750
0190	7400335BMYP	2	WELDMENT, RER Hydro Spindle
0200	7301337BMYP	1	ARM, RH Steering
0210	7301338BMYP	1	ARM, LH Steering
0230	7010935SM	2	FW, .77X1.13X.06
0240	2176440SM	4	BUSHING-0.765IDX
0250	7105916YP	1	LINK, Drag 10 Lg, 90° X 5/16-24 Ball Joints, LH
0260	7105148YP	1	LINK, Shift, 10 Lg, 90° X 5/16-24 Ball Joints, RH
0270	703331	4	NUT, 5/16-24
0280	703116	4	LCKWSHR
0290	703956	1	STUD, 3/8-16 X 2.625, Special Shoulder, GR5
0300	703185	6	BOLT, Round Head, Short Square Neck
0310	703410	2	BOLT,5/16-18X1
0330	703409	4	NUT, 5/16-18, GR5
0340	703879	2	BOLT, SQ, 3/8-16X1.75
0350	704287	2	CAPSCREW, 5/16-18X.75
1100	1727261SM	1	PEDAL-BRAKE BLACK RUB

# Guard Group

Note: Unless noted otherwise, use the standard torque specifications

Mfg. No: 7800935-00



## Guard Group

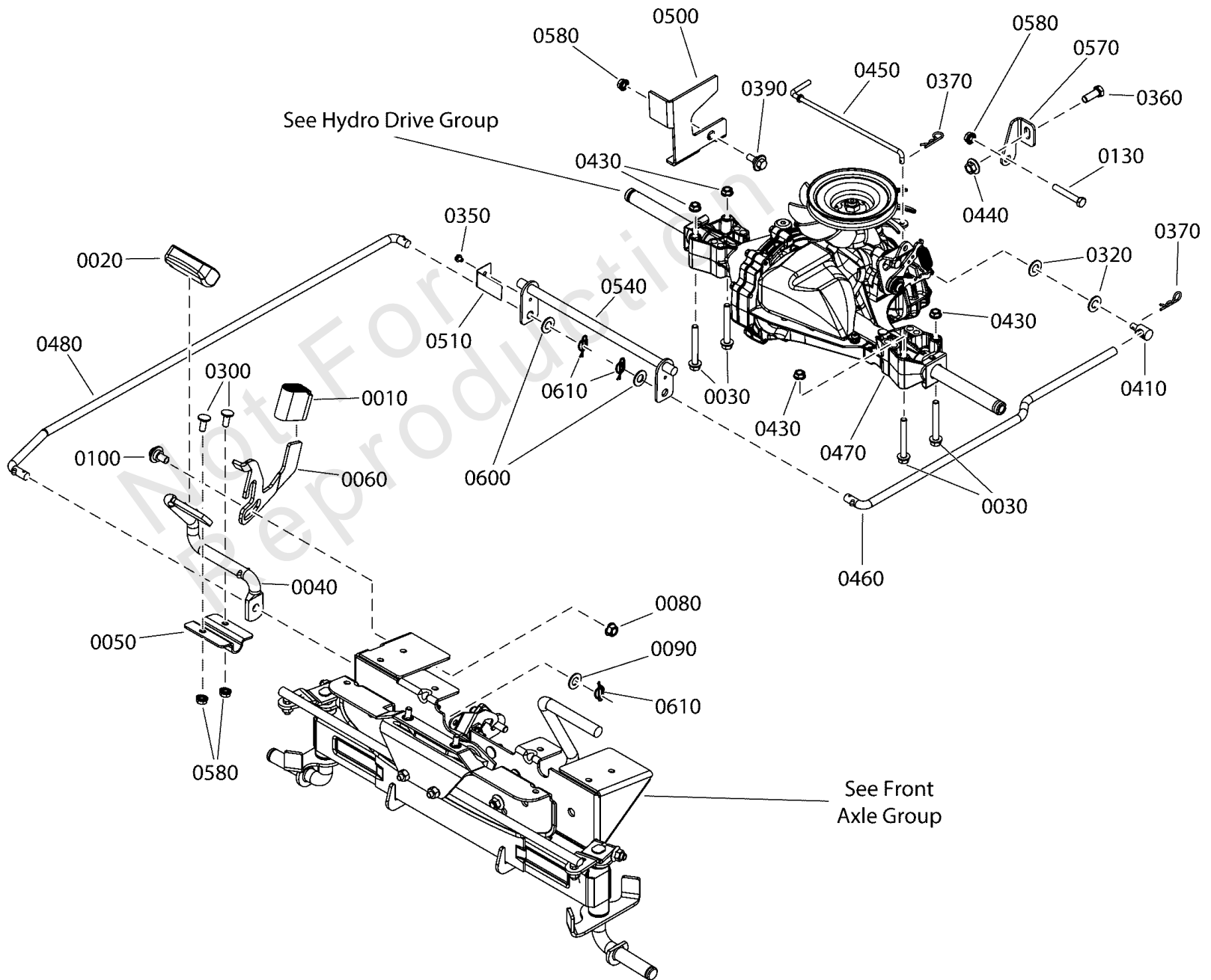
REF NO	PART NO	QTY	DESCRIPTION
0010	706115	1	COVER, Bottom
0020	706116	2	GUARD, Frame, L.H.
0030	703949	1	SCREW, 5/16-18.625
0040	703823	2	BOLT, 5/16-18X0.625
0050	703409	2	NUT, 5/16-18, GR5
0060	703297	2	RETAINER, GR5, 5/16
0070	7024998YP	2	PLUG, 1" Hole
0090	706118	1	PLUG, 1" Hole

Not For Reproduction

# Hydro Drive Group

Note: Unless noted otherwise, use the standard torque specifications

Mfg. No: 7800935-00



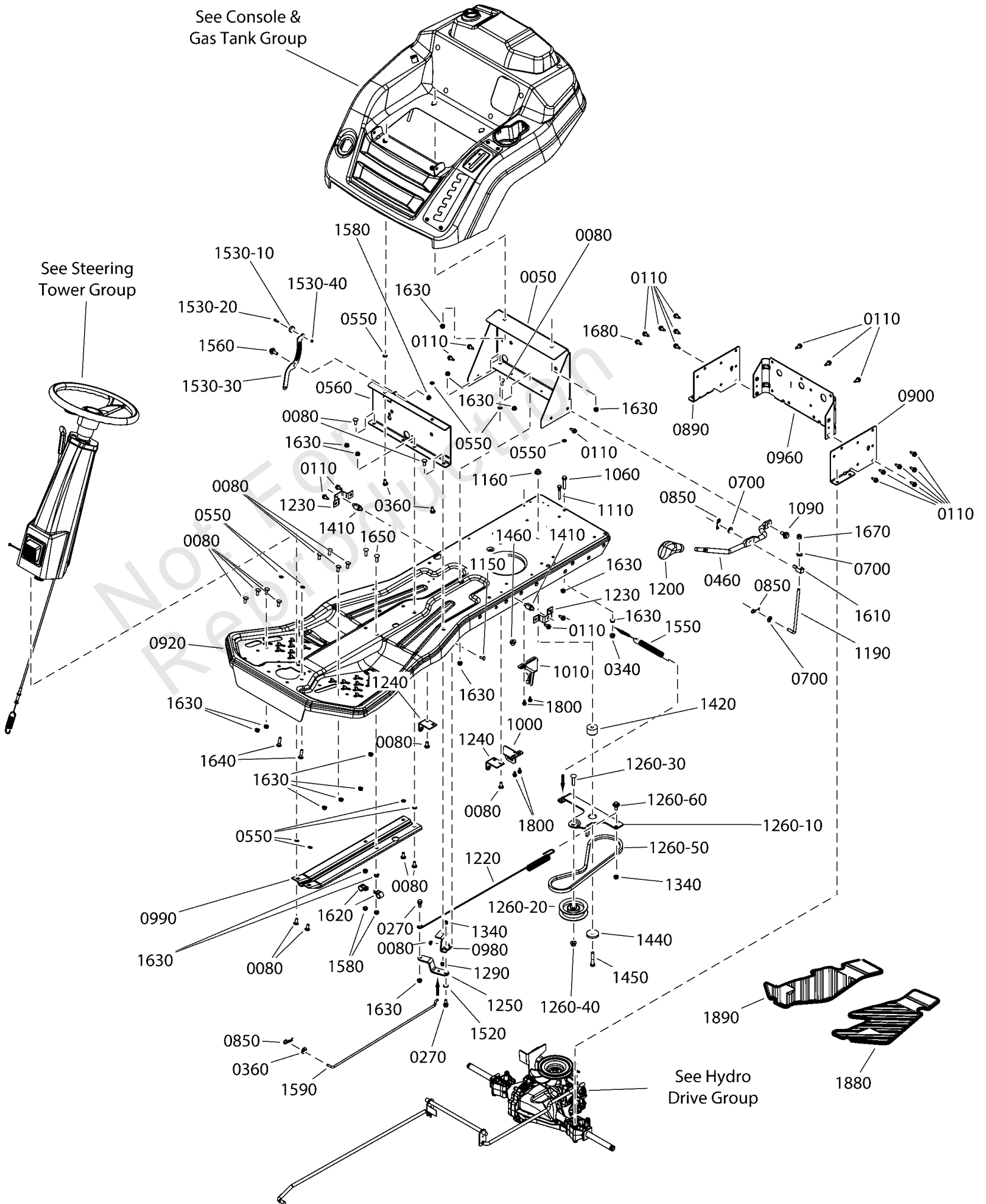
## Hydro Drive Group

REF NO	PART NO	QTY	DESCRIPTION
0010	1727259SM	1	PAD, Reverse Foot Pedal, Black Rubber
0020	1721675SM	1	PAD, Forward Foot Pedal, Black Rubber
0030	1960586SM	4	SCREW, 5/16-18 x 2-1/2, Hex Flange Whiz Lock, Black
0040	7105754BMYP	1	PEDAL, FWD/REV, RER Hydro
0050	7301357BMYP	1	BRACKET, FWD/REV Pivot
0060	7301359BMYP	1	BRACKET, Reverse Pedal
0080	703333	1	NUT, 3/8-16
0090	703183	1	WASHER, 7/16 ID X.065
0100	704206	1	BOLT, 3/8-16 X .925
0130	703867	1	CAPSCREW, 5/16-18 X 2
0300	703185	2	BOLT, Round Head, Short Square Neck
0320	703590	2	WASHER, FLAT, .406
0350	7090981YP	1	SCREW, 10-32 x 1/4 Hex Washer Self-Tap, BZ
0360	703407	1	SCREW
0370	1722460SM	2	HAIRPIN, Quick, .080 Wire, 1.19LG, Zinc/Clear
0390	009X67MA	1	BOLT, 5/16-18, .499 OD .246 LG Shoulder
0410	885076YP	1	ADJUSTING NUT, 7/16-14, .313 X .32 Shoulder, .156 Pin Hole, Zinc/Clear
0430	1935048SM	4	NUT, 5/16-18 Hex Flange Two-Way Lk Ga
0440	1960339SM	1	NUT, 3/8-16, Hex Flanged Center Lock, Black
0450	7105648YP	1	ROD, Roll Release, Hydro, RER
0460	7105664YP	1	ROD, Drive
0470	7105749YP	1	TRANSMISSION, T2 Hydro (Hydro-Gear T2-BDBE-4X3C-15X1)
0480	7105753YP	1	ROD, Drive, For/Rev, 30.91" Long
0500	7301335BMYP	1	BRACKET, Brake Lever
0510	7301354YP	1	BRACKET, Switch Actuator
0540	7400331BMYP	1	WELDMENT, For/Rev Cross Over
0570	7301310BMYP	1	BRACKET, Hydro Torque Strap, RER
0580	703409	4	NUT, 5/16-18, GR5
0600	703183	2	WASHER, 7/16 ID X.065
0610	7091594SM	3	COTTER PIN, 1/2 SELF,

# Main Frame Group

Note: Unless noted otherwise, use the standard torque specifications

Mfg. No: 7800935-00



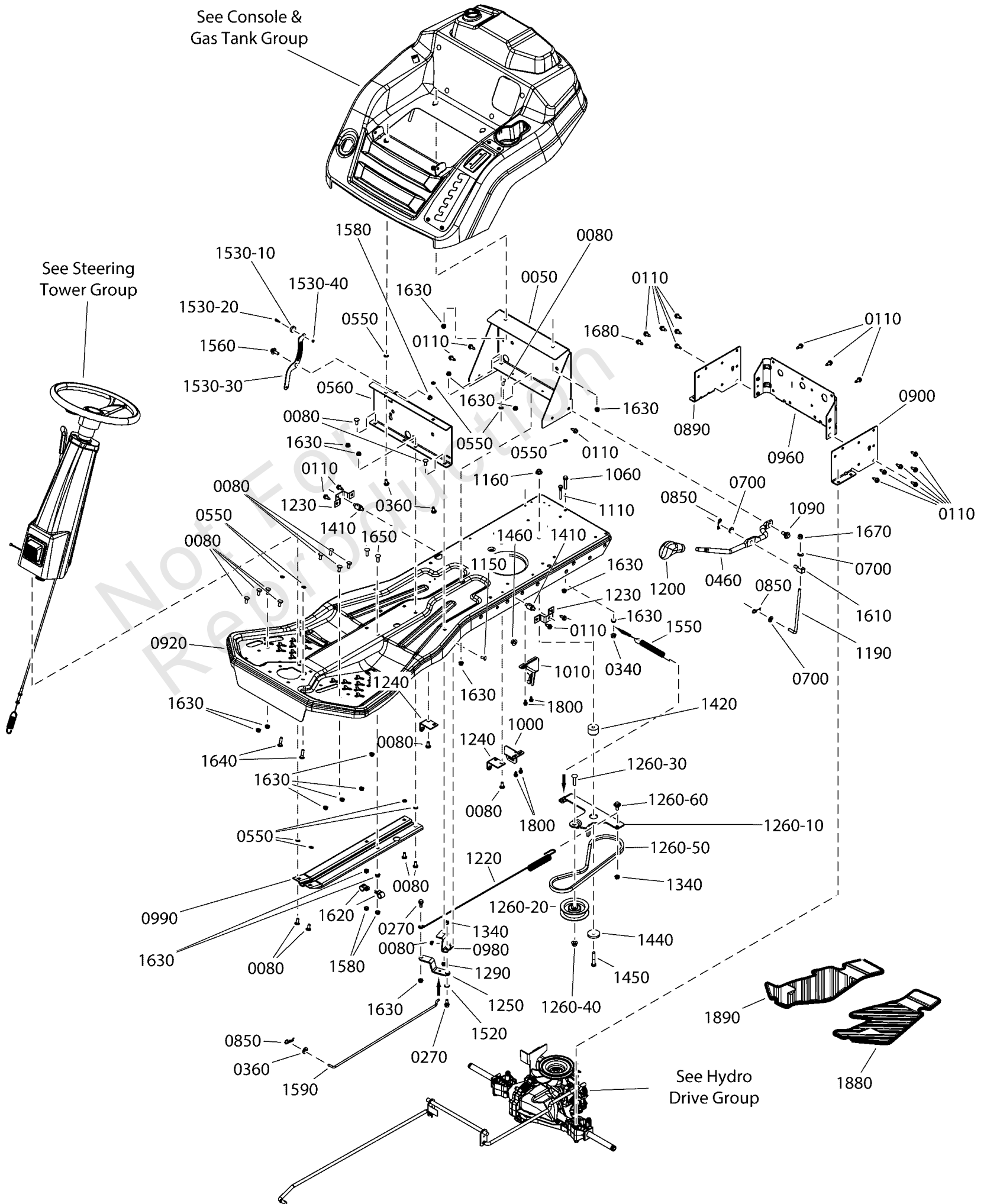
## Main Frame Group

REF NO	PART NO	QTY	DESCRIPTION
0050	7301222BMYP	1	BRACKET, Console Support
0080	703185	21	BOLT, Round Head, Short Square Neck
0110	703949	21	SCREW, 5/16-18.625
0270	703839	2	BOLT, 5/16-18X.75
0340	703115	1	NUT
0360	703332	2	WASHER
0460	7105822BMYP	1	ROD, Deck Lift, RER
0550	703297	10	RETAINER, GR5, 5/16
0560	7301330BMYP	1	BRACKET, Seat Hinge Support
0700	703590	3	WASHER, FLAT, .406
0850	703300	3	PIN, 3/32 X 1.6
0890	7301306DYP	1	PLATE, Hydro Side, RH, RED
0900	7301309DYP	1	PLATE, Hydro Side, LH, RED
0920	7301248DYP	1	MAIN FRAME, Hydro, RER Red
0960	7301297DYP	1	PLATE, Rear Hitch, Red
0980	7301401BMYP	1	BRACKET, Brake/De-Clutch Pivot Anchor
0990	7301349BMYP	1	BRACE, Frame, RER
1000	7301353BMYP	1	BRACKET, RMO Switch
1010	7301379BMYP	1	BRACKET, Hydro Park Brake Switch
1060	703217	1	SCREW, 5/16-18 X1.50, Hex Head Cap, Full Thread, GR5, ZC/CL
1090	702315	1	BOLT, SHOULDER
1110	721293	1	SCREW, 5/16-18 X .5 w/.75 Unthreaded Guide, YZ
1150	703841	1	BOLT, 1/4-20X0.625
1160	1960339SM	1	NUT, 3/8-16, Hex Flanged Center Lock, Black
1190	7105735YP	1	LINKAGE, 3/8 Deck Rod
1200	7105767YP	1	KNOB, HOC/Speed Selector, 1/2 Hole
1220	7105894YP	1	SPRING, 26.06 Long, 29 Coil, RER Hydro Brake
1230	7301336BMYP	2	BRACKET, Rear Deck Lift
1240	7301346BMYP	1	BRACKET, Forward/Reverse Pivot
1250	7301400BMYP	1	BRACKET, Brake/De-Clutch Pivot
1260-10	7301341BMYP	1	BRACKET, Idler
1260-20	1728000SM	1	PULLEY, Idler, 3-1/8 OD, 3/8 ID
1260-30	1931352SM	1	BOLT, Carriage, Short Neck, 3/8-16 x 1-1/2
1260-40	703158	1	NUT, 3/8-16, Hex Flange, ESNA, Zinc/Clear
1260-50	7106207YP	1	V-BELT, Hydro Drive, RER (38.24" EL, HA Section)
1260-60	1732426SM	1	BOLT-SHLDR 5/16-18 0.
1290	703233	1	NUT, 1/4-20, GR5
1340	703164	2	NUT
1410	7105736YP	2	SWIVEL, .390 Dia., Thru Hole
1420	1729007SM	1	SPACER, .387 I.D. x 1.50 O.D. x 1.04 Long (Powdered Metal) Yellow
1440	1960071SM	1	WASHER-0.375(0.41)DX1
1450	703589	1	CAPSCREW, 3/8-16X2
1460	703893	1	NUT, CNTR LCK, 3/8-16
1520	704205	1	WASHER, .507 ID X .708 OD X .020 Thk, Shim Plain
1530-10	7106025YP	1	ROLLER, .265 X 1.312 X .344
1530-20	703960	1	BOLT, 10-24 X .750, Shoulder, GR8, Zinc/Clear
1530-30	7301367BMYP	1	PLATE, Roller OPC
1530-40	7091267SM	1	NUT, 10-24, Hex Center Lock, BZ
1550	7013885YP	1	SPRING, Clutch / Brake
1560	1716654SM	1	BOLT, 5/16-18 X .75, .50 Shoulder G5 YEL
1580	704067	3	NUT, HEX FLNG,5/16-18

# Main Frame Group

Note: Unless noted otherwise, use the standard torque specifications

Mfg. No: 7800935-00





## Main Frame Group

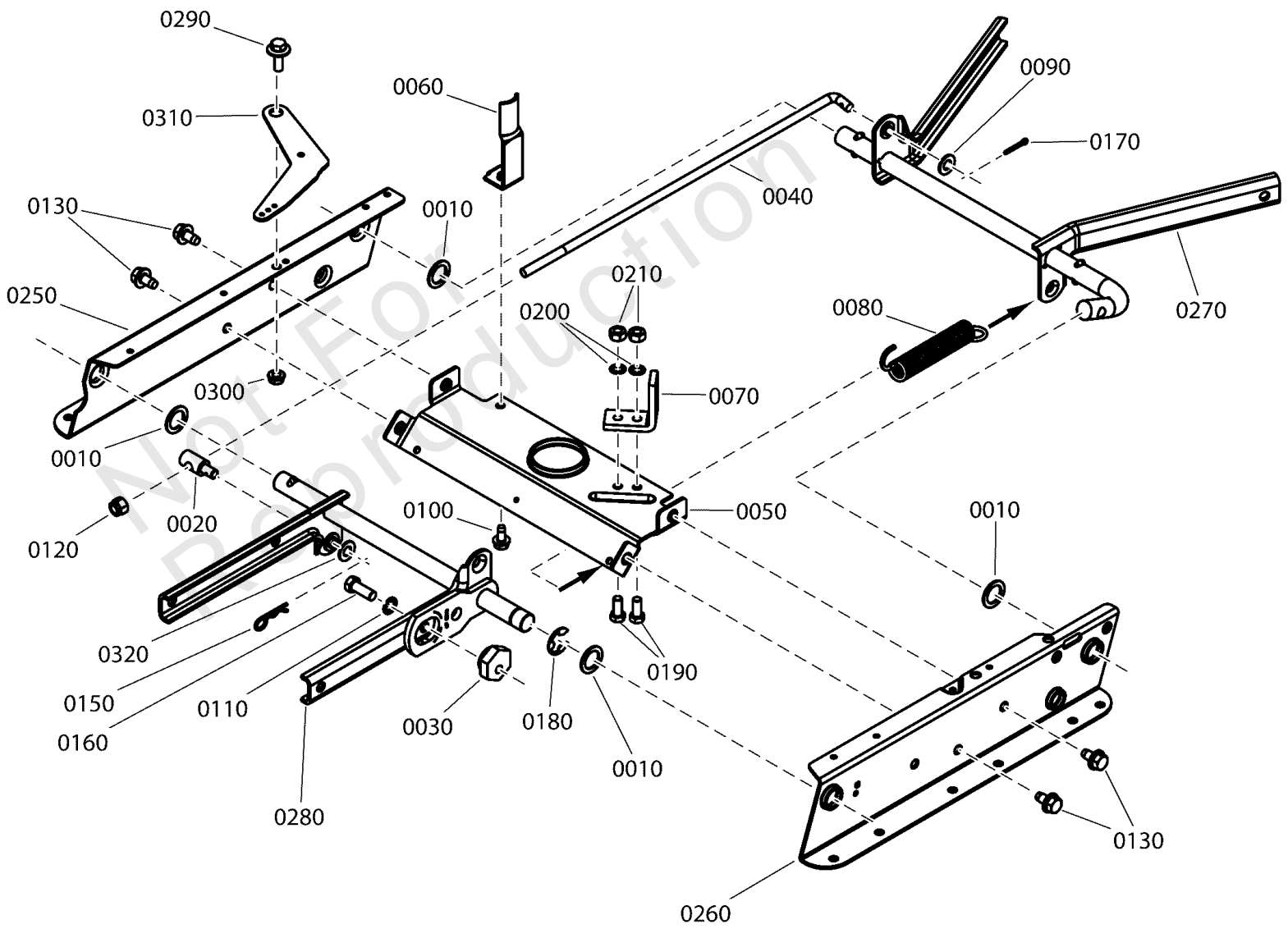
REF NO	PART NO	QTY	DESCRIPTION
1590	7105667YP	1	ROD, Clutch
1610	7072495SM	1	SWIVEL, 3/8 W/ Thru Hole, YZ
1620	7900020SM	2	CLIP, Harness, 5/8"
1630	703409	21	NUT, 5/16-18, GR5
1640	703446	2	BOLT, 5/16-18X1.25 G5
1650	703483	2	BOLT,5/16-18X1.000,RO
1670	703117	1	NUT
1680	703985	1	SCREW, 5/16-18X.5
1800	703054	4	SCREW, 1/4-20X0.625
1880	706119	1	PAD, Foot, LH, Mech/Hydro RER
1890	7106096YP	1	PAD, Foot, RH, Hydro, RER

Not For Reproduction

# Rail Assembly

Note: Unless noted otherwise, use the standard torque specifications

Mfg. No: 7800935-00



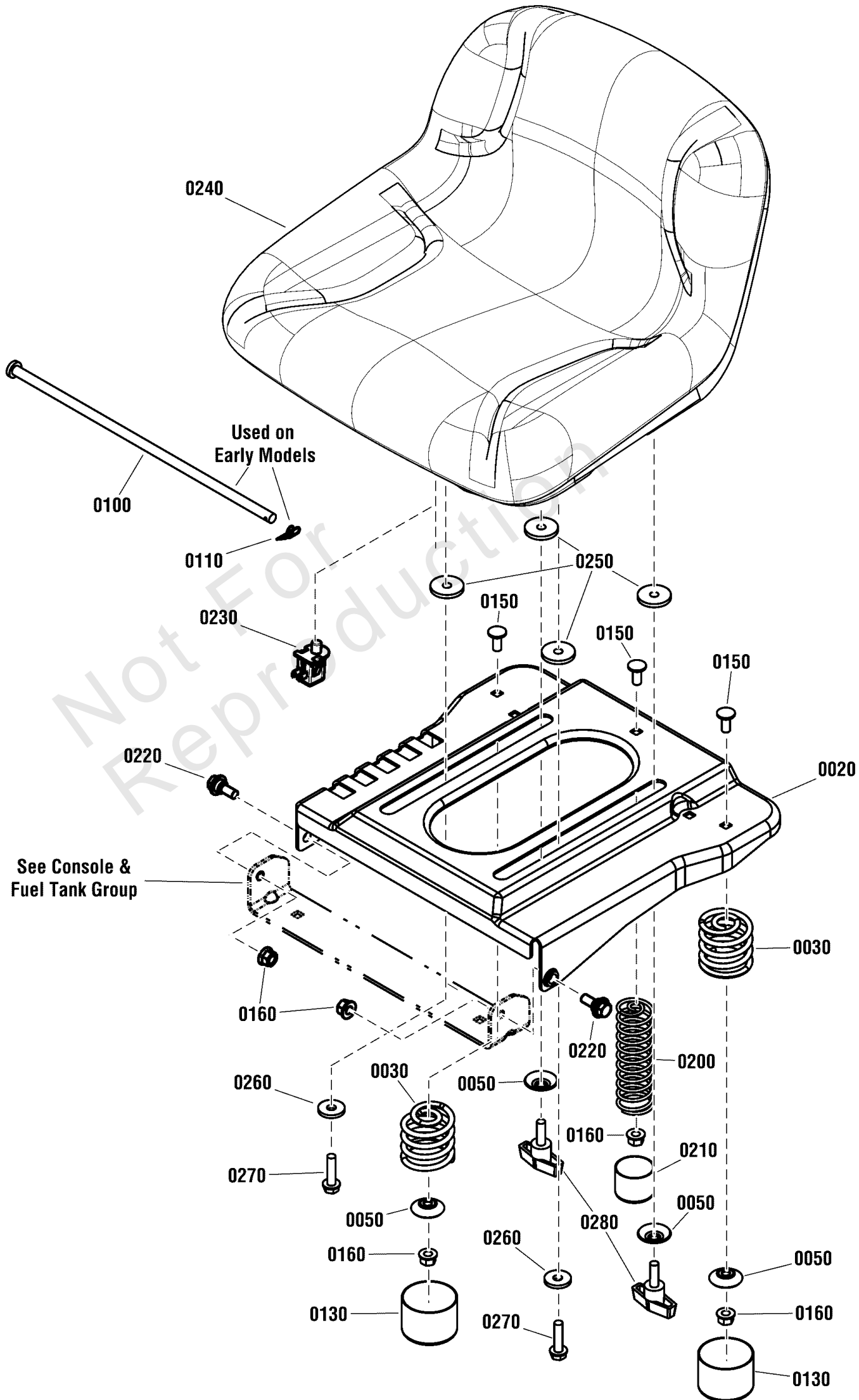
## Rail Assembly

REF NO	PART NO	QTY	DESCRIPTION
0010	7010935SM	4	FW, .77X1.13X.06
0020	7011231SM	1	SWIVEL, 3/8 w/thru hole, Special
0030	7015447YP	1	ECCENTRIC, Leveling
0040	7016122YP	1	ROD, Leveling (3/4-24 thread)
0050	7031838BMYP	1	BRACE, TOP ECOAT
0060	7031855YP	1	GUIDE, Belt
0070	706321	1	ANCHOR
0080	7046163YP	1	SPRING, Assist
0090	703590	2	WASHER, FLAT, .406
0100	703949	1	SCREW, 5/16-18.625
0110	703930	1	WASHER, INT LCK, 3/8
0120	703901	1	NUT, HEX, 3/8-24
0130	7091198SM	4	SCREW, 3/8-16 x 5/8 Hex Washer Self-Tap, BP
0150	703300	1	PIN, 3/32 X 1.6
0160	001X20MA	1	BOLT,HEX.37 24X1.00 Z
0170	703958	1	PIN, 1/8 X 0.75
0180	0011X3MA	1	RING, E .750D .050T
0190	703336	2	CAPSCREW, 5/16-24X.75
0200	7090391SM	2	WASHER, 5/16, Internal Lock, Zinc/Clear
0210	703331	2	NUT, 5/16-24
0250	7301328YP	1	RAIL, Deck Lift RH
0260	7301329YP	1	RAIL, Deck Lift LH
0270	7400324YP	1	WELDMENT, Rear Lift Arm, RER-RE
0280	7400328YP	1	WELDMENT, Front Lift Arm, Adjustable
0290	1716654SM	1	BOLT, 5/16-18 X 0.75, .50 Shoulder, G5 YZ
0300	704067	1	NUT, HEX FLNG,5/16-18
0310	7301366YP	1	PLATE, Brake OPC
0320	1960103SM	1	WASHER, 3/8"

# Seat Group

Note: Unless noted otherwise, use the standard torque specifications

Mfg. No: 7800935-00



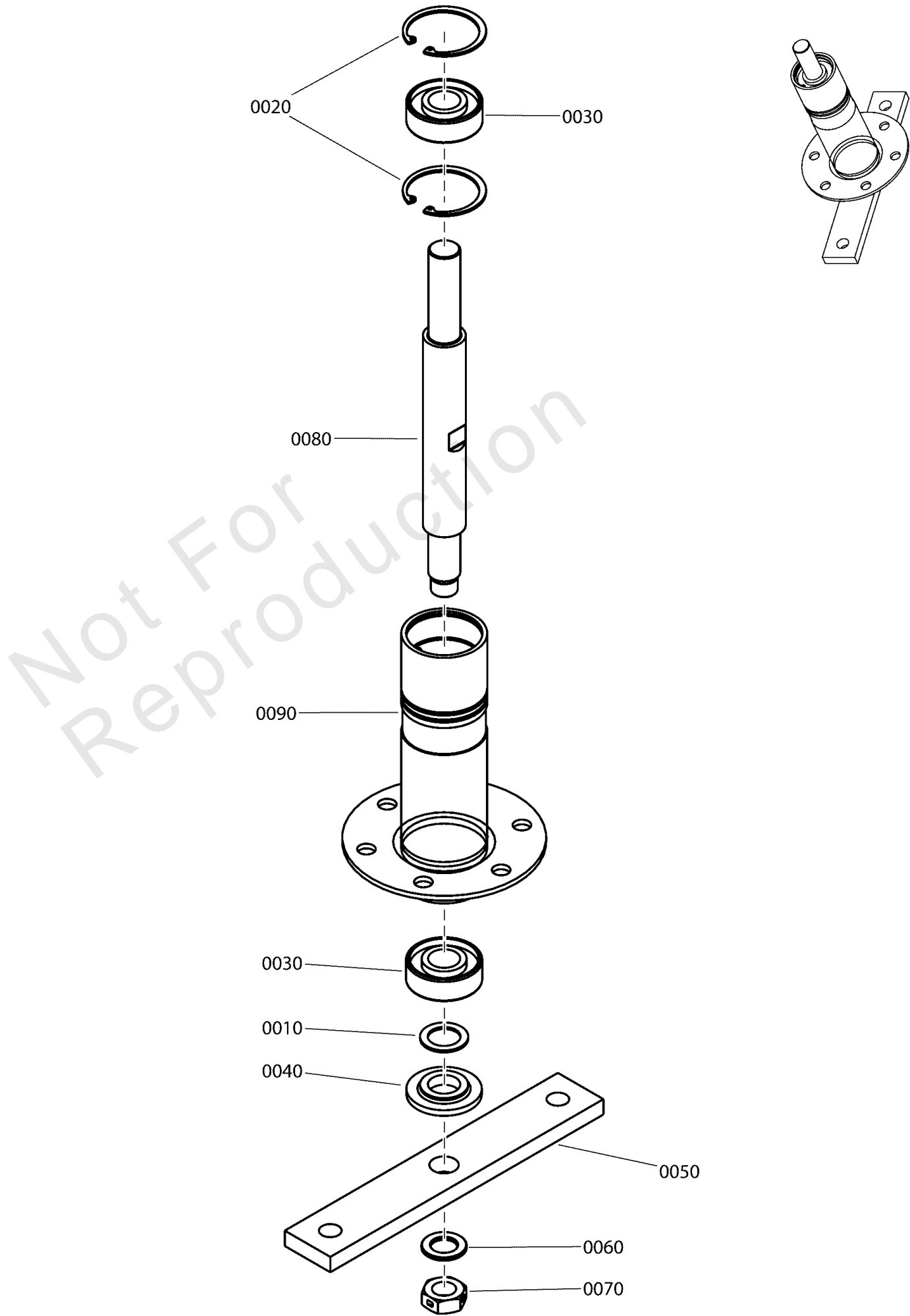
## Seat Group

REF NO	PART NO	QTY	DESCRIPTION
0020	7301391BMYP	1	SUPPORT, Seat
0030	1704728SM	2	SPRING, Compression, 19/32 x 2
0050	1709256SM	4	WASHER, Spring, 5/16 x 1 1/4
0100	1751493YP	1	ROD, Seat Pivot, .375 X 13.44 to .109 Hole -Used on early models
0110	703355	1	COTTER PIN, 3/8 -Used on early models
0130	1704724SM	2	COVER, Spring 2" Id X 1-1/2", Black Vinyl
0150	703185	3	BOLT, Round Head, Short Square Neck
0160	703115	5	NUT
0200	7106013YP	1	SPRING, Compression, 4.57" Free Length
0210	5023274SM	1	CAP, Vinyl, 1.375 X 1
0220	703851	2	BOLT, 5/16-18X1.15
0230	7023354YP	1	SWITCH, SEAT
0240	1754214YP	1	SEAT, 11" High, 18.8" Wide (Black)
0250	1731300SM	4	SPACER, 0.32 ID x 1-1/2 OD x 3/10 THK Powdered Metal Yellow
0260	703298	2	WASHER, 5/16
0270	1930595SM	2	SCREW, Hex Cap Flange Whiz Lock, 5/16-18 x 1-1/4, G5
0280	1752056YP	2	KNOB, 5/16-18 x 3/4 Two Prong

# Spindle & Housing Assembly

Note: Unless noted otherwise, use the standard torque specifications

Mfg. No: 7800935-00



## Spindle & Housing Assembly

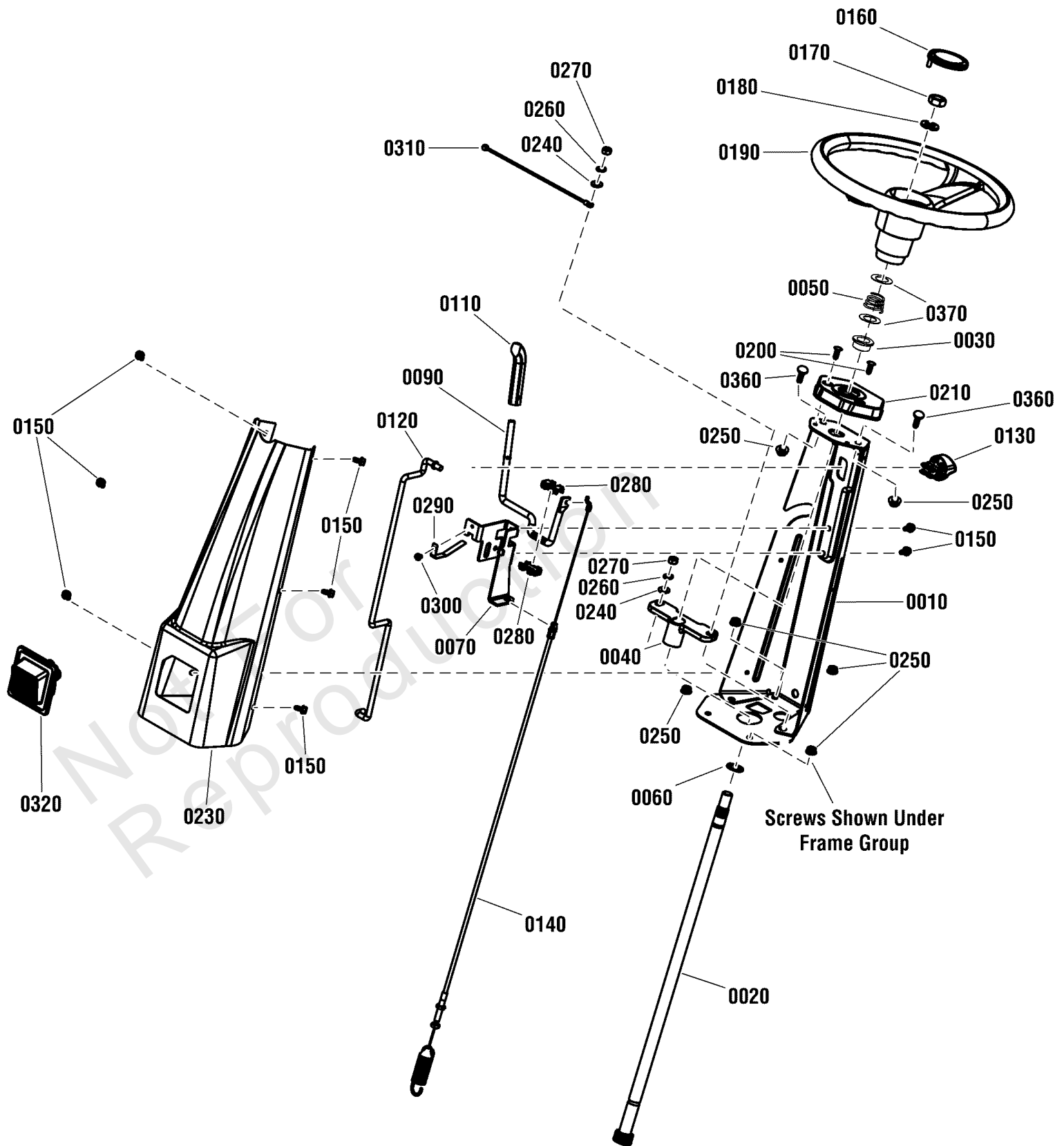
REF NO	PART NO	QTY	DESCRIPTION
0010	7010935SM	1	FW, .77X1.13X.06
0020	7012491SM	2	RING, 1.85", Internal Retaining
0030	7013313SM	2	BEARING, Ball, 1.78 OD, .750 ID, .610 Wide
0040	7014407SM	1	WASHER, Spindle, .75 ID, 1.75 OD, .28 Thick, PM
0050	7031184YP	1	HOLDER, Blade (3 Hole)
0060	7044782YP	1	SPACER, Blade Centering (.63 X 1.05 X .094)
0070	7090356YP	1	NUT, 5/8-18 Hex Center Lock Jam, GR5, ZP
0080	7200147YP	1	SHAFT, Spindle, 9.737"
0090	7400327YP	1	WELDMENT, Spindle Housing (7" Tall)

Not For Reproduction

# Steering Tower Group

Note: Unless noted otherwise, use the standard torque specifications

Mfg. No: 7800935-00





## Steering Tower Group

REF NO	PART NO	QTY	DESCRIPTION
0010	7301293BMYP	1	SUPPORT, Steering Column
0020	7105572YP	1	SHAFT, Steering
0030	1729665SM	1	BUSHING, Steering, 3/4 ID
0040	7105751YP	1	BEARING, Steering Shaft, 3/4 ID
0050	7106341YP	1	SPRING, Conical Compression
0060	703151	2	WSHR
0070	7301375BMYP	1	BRACKET, Blade Engagement Handle
0090	7105731BMYP	1	LEVER, ENGAGE, PTO
0110	7023657YP	1	GRIP, Handle, 3/8
0120	7105654YP	1	ROD, Parking Brake
0130	7105745YP	1	KNOB, Parking Brake
0140	7105566YP	1	CABLE, Blade Engagement, 40.82"
0150	703953	8	SCREW, 1/4-20X5/8
0160	1725024SM	1	CAP, Steering Wheel
0170	1960576SM	1	NUT, Hex Lock, ESNA Light, 5/8-18
0180	703580	1	WASHER, 5/8
0190	7105776YP	1	STEERING WHEEL, 13 DIA, 5.87 Dish
0190	706337	1	STEERING WHEEL, 13 DIA, 5.87 Deep Dish
0200	7091272YP	2	FASTENER, 1/4 x 3/4 Ratchet
0210	7105597YP	1	COVER, Steering Tower/Support
0230	7301260DYP	1	TOWER, Steering, Red
0240	703350	2	WASHER
0250	703409	6	NUT, 5/16-18, GR5
0260	703116	2	LCKWSHR
0270	703465	4	NUT, 5/16-18, GRB, Zinc/Clear
0280	7106027YP	2	BUSHING, PTO Lever, Plastic
0290	7301373YP	1	PADDLE, PTO Lever
0300	704061	1	SCREW,HEX, #10-32X.25
0310	7106051YP	1	WIRE, RER Head Light Ground
0320	7105923YP	1	ASSEMBLY, Head Light
0320-30	1755317YP	1	* LAMP, 12VAC 25-30 Lumen LED ((1156 Socket, Type T25-BA15S)(Not Shown)
0360	703447	2	BOLT, 5/16-18X.625 G5
0370	7031965YP	2	WASHER, 1.25 X .765 X .03, Thrust, ZC/CL

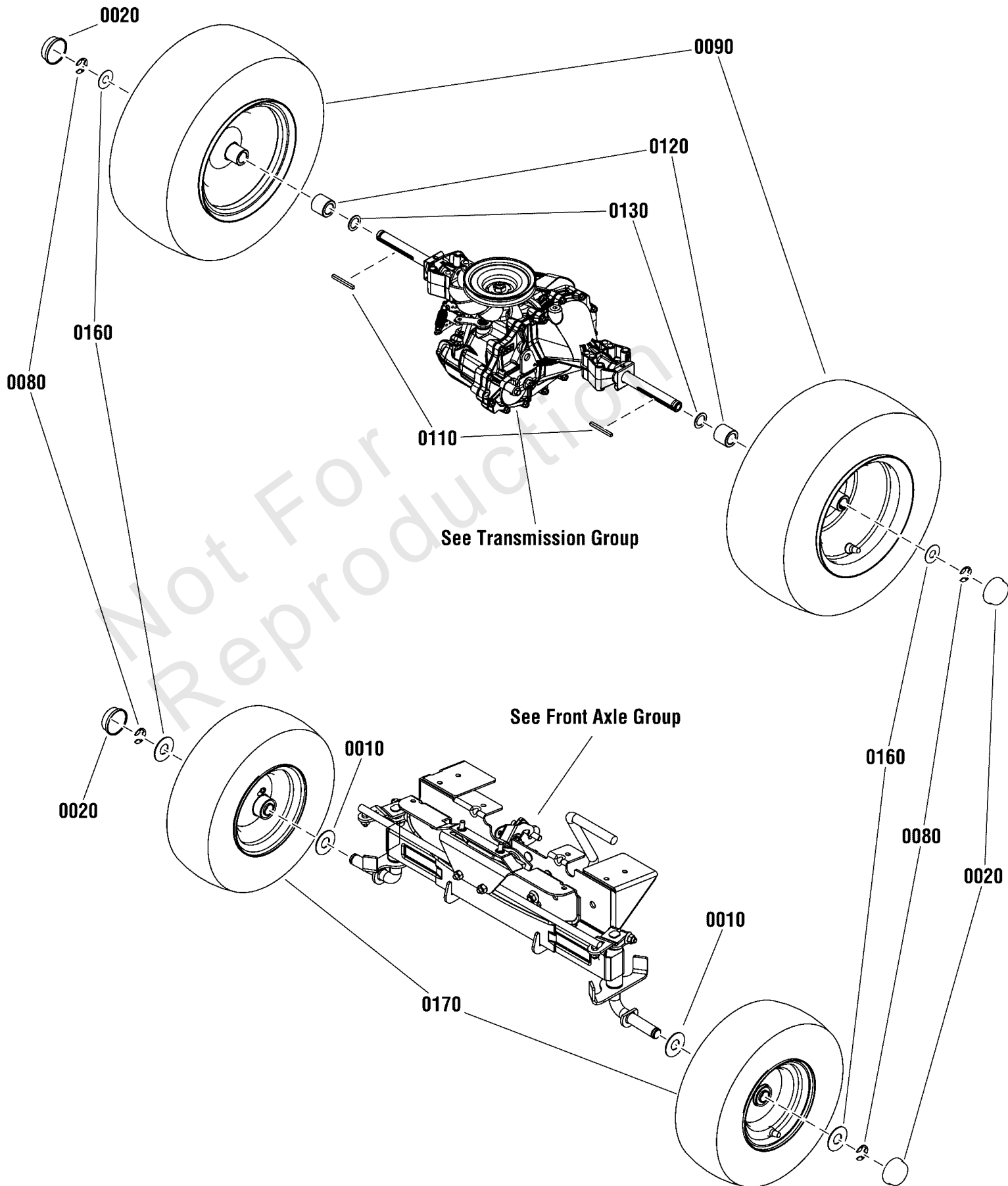
### Footnotes:

Note\* See your local hardware store for replacement bulbs.

# Wheel Group

Note: Unless noted otherwise, use the standard torque specifications

Mfg. No: 7800935-00



## Wheel Group

REF NO	PART NO	QTY	DESCRIPTION
0010	7031965YP	2	WASHER, 1.25 X .765 X .03, Thrust, ZC/CL
0020	094618MA	4	HUB CAP
0080	0011X3MA	4	RING, E .750D .050T
0090	7106092YP	2	ASSEMBLY, Rear Wheel, 16 X 6.50-8, 2P K358
0110	720258	2	KEY, 3/16 Square x 2 Long
0120	704204	2	SPACER, Axle, .77" ID, 1.25" OD, 1.15" Long, Zinc/Clear
0130	7010935SM	4	FW, .77X1.13X.06
0160	722620	4	WASHER, .765 ID, 1.8 OD, .0598 Thk, Flat ZP
0170	7106090YP	2	ASSEMBLY, Front Wheel, 13" X 5-6
0170-10	7012234SM	4	VALVE, Stem & Cap -(Not Shown)
0170-20	7011807YP	4	BEARING, Ball, Flanged (3/4 ID, 1-3/8 OD) -(Not Shown)
0170-50	703957	2	GREASE FITTING, 1/4-28X31/32 Zinc/Clear -(Not Shown)

Not For Reproduction

# Hardware Identification & Torque Specifications

Torque Specification Chart								
FOR STANDARD METRIC MACHINE HARDWARE (Tolerance ± 20%)								
Property Class	5.6		8.8		10.9		12.9	
	Class 5.6		Class 8.8		Class 10.9		Class 12.9	
Size Of Hardware	in/lbs	Nm.	in/lbs	Nm.	in/lbs	Nm.	in/lbs	Nm.
	ft/lbs		ft/lbs		ft/lbs		ft/lbs	
M3	5.88	.56	13.44	1.28	19.2	1.80	22.92	2.15
M4	13.44	1.28	30.72	2.90	43.44	4.10	52.56	4.95
M5	26.4	2.50	60.96	5.75	5.97	8.10	7.15	9.7
M6	44.64	4.3	7.3	9.9	10.3	14	12.1	16.5
M7	5.2	7.1	12.1	16.5	16.9	23	19.9	27
M8	7.7	10.5	17.7	24	25	34	29	40
M10	15	21	35	48	50	67	59	81
M12	26	36	61	83	86.2	117	103	140
M14	42	58	101	132	136	185	162	220
M16	64	88	147	200	210	285	250	340
M18	89	121	202	275	287	390	346	470
M20	126	171	290	390	405	550	486	660
M22	169	230	390	530	559	745	656	890
M24	217	295	497	375	708	960	840	1140
M27	320	435	733	995	1032	1400	1239	1680
M30	435	590	995	1350	1401	1900	1681	2280
M33	590	800	1349	1830	1902	2580	2278	3090
M36	759	1030	1740	2360	2441	3310	2935	3980
M39	988	1340	2249	3050	3163	4290	3798	5150

Torque Specification Chart						
FOR STANDARD MACHINE HARDWARE (Tolerance ± 20%)						
Hardware Grade	No Marks		SAE Grade 5		SAE Grade 8	
	SAE Grade 2		SAE Grade 5		SAE Grade 8	
Size Of Hardware	in/lbs	Nm.	in/lbs	Nm.	in/lbs	Nm.
	ft/lbs		ft/lbs		ft/lbs	
8-32	19	2.1	30	3.4	41	4.6
8-36	20	2.3	31	3.5	43	4.9
10-24	27	3.1	43	4.9	60	6.8
10-32	31	3.5	49	5.5	68	7.7
1/4-20	66	7.6	8	10.9	12	16.3
1/4-28	76	8.6	10	13.6	14	19.0
5/16-18	11	15.0	17	23.1	25	34.0
5/16-24	12	16.3	19	25.8	29	34.0
3/8-16	20	27.2	30	40.8	45	61.2
3/8-24	23	31.3	35	47.6	50	68.0
7/16-14	30	40.8	50	68.0	70	95.2
7/16-20	35	47.6	55	74.8	80	108.8
1/2-13	50	68.0	75	102.0	110	149.6
1/2-20	55	74.8	90	122.4	120	163.2
9/16-12	65	88.4	110	149.6	150	204.0
9/16-18	75	102.0	120	163.2	170	231.2
5/8-11	90	122.4	150	204.0	220	299.2
5/8-18	100	136	180	244.8	240	326.4
3/4-10	160	217.6	260	353.6	386	525.0
3/4-16	180	244.8	300	408.0	420	571.2
7/8-9	140	190.4	400	544.0	600	816.0
7/8-14	155	210.8	440	598.4	660	897.6
1-8	220	299.2	580	788.8	900	1,244.0
1-12	240	326.4	640	870.4	1,000	1,360.0

The guides and ruler furnished below are designed to help you select the appropriate hardware.



Nut, M8

Thread Diameter (mm)

Inside Diameter (in)      Threads per inch

Nut, 1/2-16



Screw, M8- 1.25 x 25

Thread Diameter (mm)      Distance between threads (mm)      Body Length (mm)

Body Diameter      Threads per inch      Body Length (in)

Screw, 1/2- 16 x 2



## Standard Hardware Sizing

When a washer or nut is identified as 1/2" (M8), this is the *Nominal size*, meaning the *inside diameter* is 1/2 inch (8mm metric thread diameter); if a second number is present it represents the *threads per inch* (distance between threads).

When bolt or capscrew is identified as 1/2 - 16 x 2" (M8 - 1.25 x 50), this means the *Nominal size*, or body diameter is 1/2 inch (8mm metric thread diameter), the second number, 16, represents the *threads per inch*, (*distance between threads*). The final number is the body length of the bolt or screw, 2 inches (50mm).

## NOTES

- These torque values are to be used for all hardware excluding: locknuts, self-tapping screws, thread forming screws, sheet metal screws and socket head setscrews.
- Recommended seating torque values for locknuts:
  - for prevailing torque locknuts - use 65% of grade 5 torques.
  - for flange whizlock nuts and screws - use 135% of grade 5 torques.
- Unless otherwise noted on assembly drawings, all torque values must meet this specification.

## Common Hardware Types

Hex Head Capscrew



Washer



Carriage Bolt



Hex Nut

## Wrench & Fastener Size Guide

1/4" Bolt or Nut Wrench—7/16"	5/16" Bolt or Nut Wrench—1/2"	3/8" Bolt or Nut Wrench—9/16"	7/16" Bolt or Nut Wrench (Bolt)—5/8" Wrench (Nut)—11/16"	1/2" Bolt or Nut Wrench—3/4"
M6 Bolt or Nut Wrench—10mm	M8 Bolt or Nut Wrench—13mm	M10 Bolt or Nut Wrench—17mm	M12 Bolt or Nut Wrench—19mm	M14 Bolt or Nut Wrench—22mm

