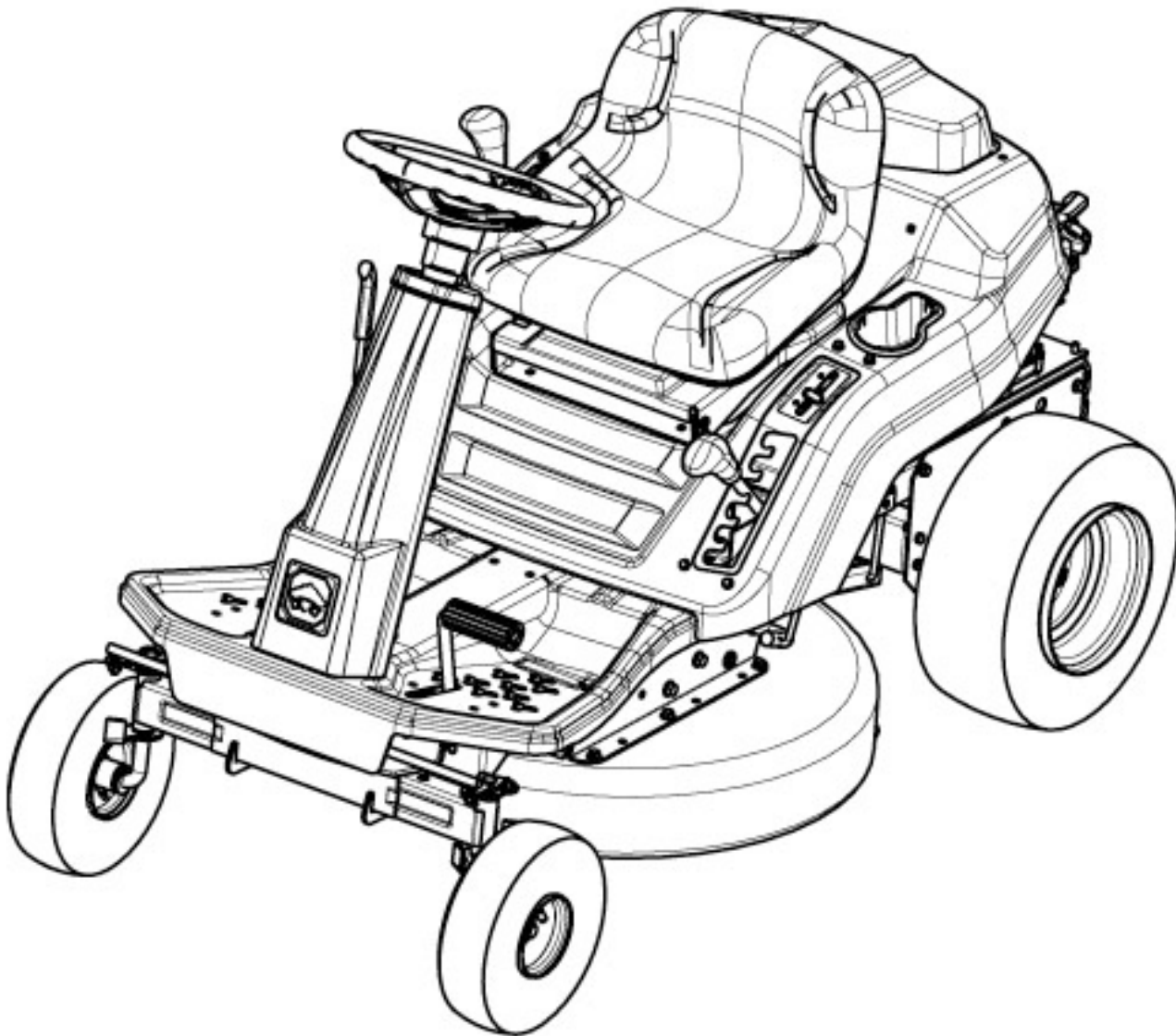




# Parts Manual

Mfg. No: 7800932-00  
RE130, 33" 12.5HP Rear Engine Rider RE  
Series



1692125 - Cart, Dump (10 Cu. Ft.).....

7600199 - Grass Catcher, Single.....

7600192 - Grass Catcher, Twin.....

1696324 - Cover, Tractor.....

7600071 - Cover, Tractor.....

7600197YP - Headlight Kit,.....

Not For  
Reproduction

---

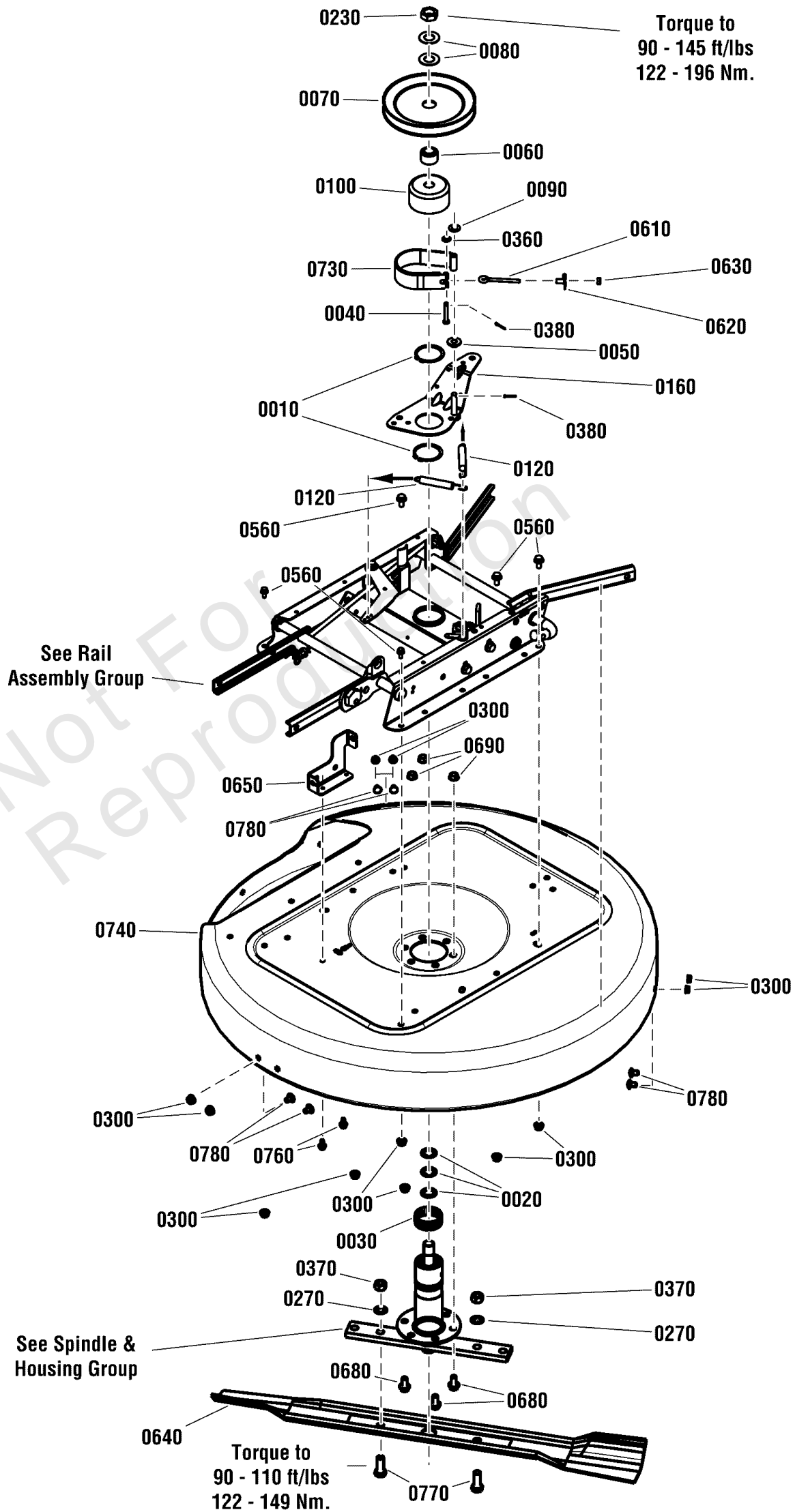
<b>Model Components</b>	<b>Page</b>
33" Deck Assembly.....	4
33" Deck Group.....	6
Console & Gas Tank Group.....	8
Decals.....	10
Differential Assembly.....	12
Electrical Group.....	14
Engine Group.....	16
Front Axle Group 11" Wheels.....	18
Main Frame Group.....	20
Mechanical Drive Assembly RER.....	24
Primary Chain Case.....	26
Rail Assembly.....	28
Seat Group.....	30
Spindle Assembly Group.....	32
Steering Tower Group.....	34
Wheel Group.....	36
Torque Specification Chart.....	38

Not For  
Reproduction

# 33" Deck Assembly

Note: Unless noted otherwise, use the standard torque specifications

Mfg. No: 7800932-00



## 33" Deck Assembly

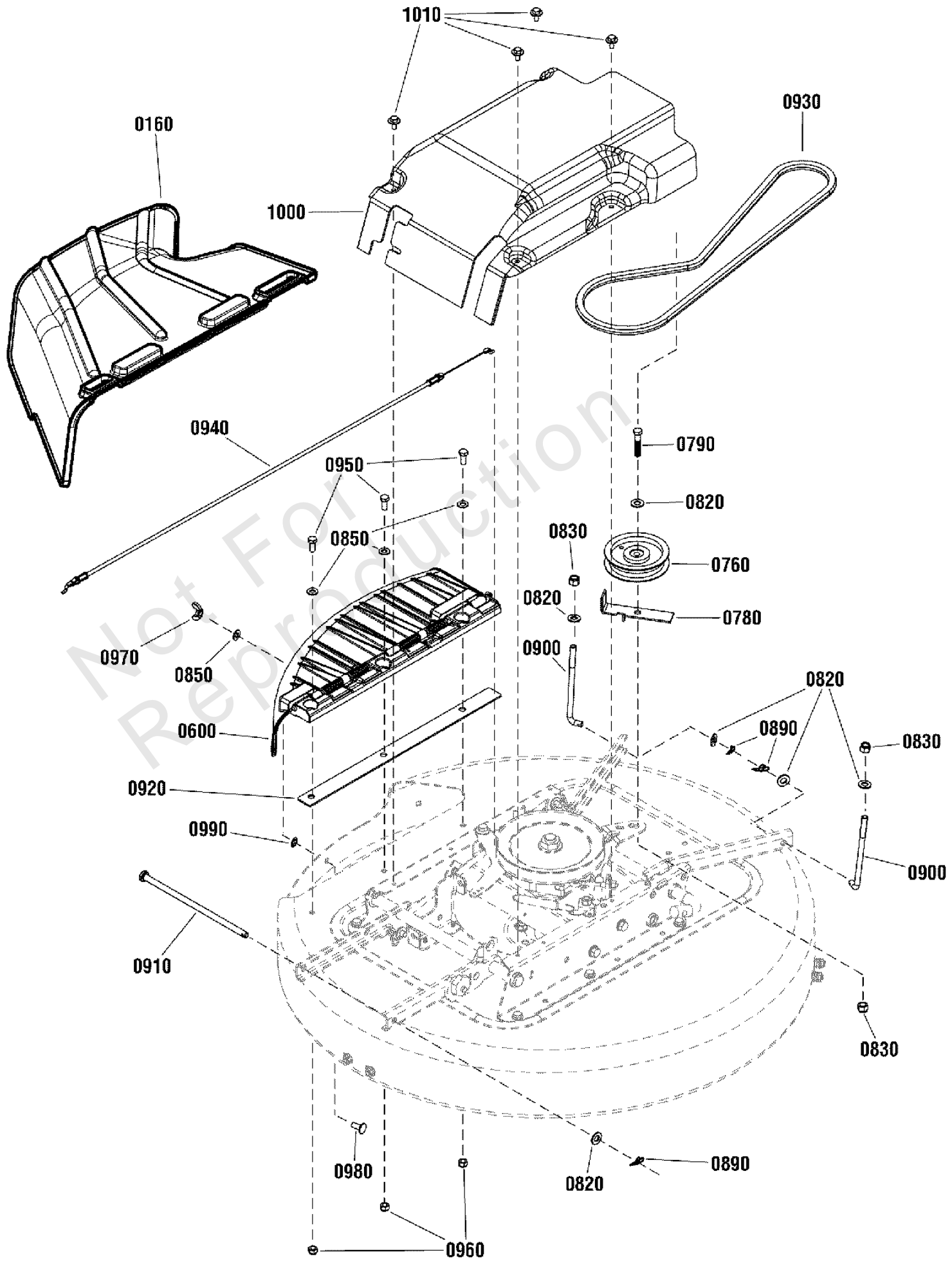
REF NO	PART NO	QTY	DESCRIPTION
0010	7010740YP	2	RING, 2 External Retaining
0020	7010935SM	3	FW, .77X1.13X.06
0030	7012670YP	1	RING, 2" ID x 3/4" High, Tolerance
0040	7014304YP	1	PIN, 1/4 x 1-5/8 Clevis
0050	7014314YP	1	SPACER, .31 I.D. x .39 O.D. x 1 Nylon
0060	7015290YP	1	HUB, Pulley, PM
0070	7018781YP	1	PULLEY, Deck Spindle, 6.95 OD
0080	7032027SM	2	WASHER, 49/64x1-1/2x.06, Flat
0090	703590	1	WASHER, FLAT, .406
0100	7035378YP	1	DRUM, Brake Spindle (3" OD, 1.6" Tall)
0120	7036521YP	2	SPRING, Extension, 4 x 1/2 Diameter
0160	7047787YP	1	WELDMENT, Idler Arm
0230	7074467SM	1	NUT, 3/4-16 Hex Jam, GR 8
0270	7090509YP	2	WASHER, 1/2 Internal Tooth Lock, BZ
0300	703409	12	NUT, 5/16-18, GR5
0360	703332	1	WASHER
0370	7091939YP	2	NUT, 1/2-20 Hex, GR 5 ZP
0380	703312	2	PIN, COTTER, 3/32X.75
0560	703823	6	BOLT, 5/16-18X0.625
0610	7014302YP	1	EYE-BOLT, 1/4-20 x 2-7/8 ZP
0620	7014303YP	1	T-NUT, 1/4-20 (Bent End)
0630	703127	1	NUT
0640	7034168YP	1	BLADE, 33" High Lift
0650	7301280BMYP	1	BRACKET, Blade Engagement Cable
0680	703955	3	BOLT, 3/8-16X0.75
0690	703333	3	NUT, 3/8-16
0730	7503086YP	1	ASSEMBLY, BRAKE BAND
0740	7061972YP	1	KIT, 33" Deck Replacement, Red, (Includes Decals)
0760	703962	2	SCREW, 1/4-20 X 5/8, Torx Pan Head Self-Tapping, Zinc/Clear
0770	7090491YP	2	SCREW, 1/2-20 x 1-1/4 Hex Head Cap, GR5
0780	703798	6	BOLT, 5/16-18X0.50

# 33" Deck Group

Note: Unless noted otherwise, use the standard torque specifications

Mfg. No: 7800932-00

7503104



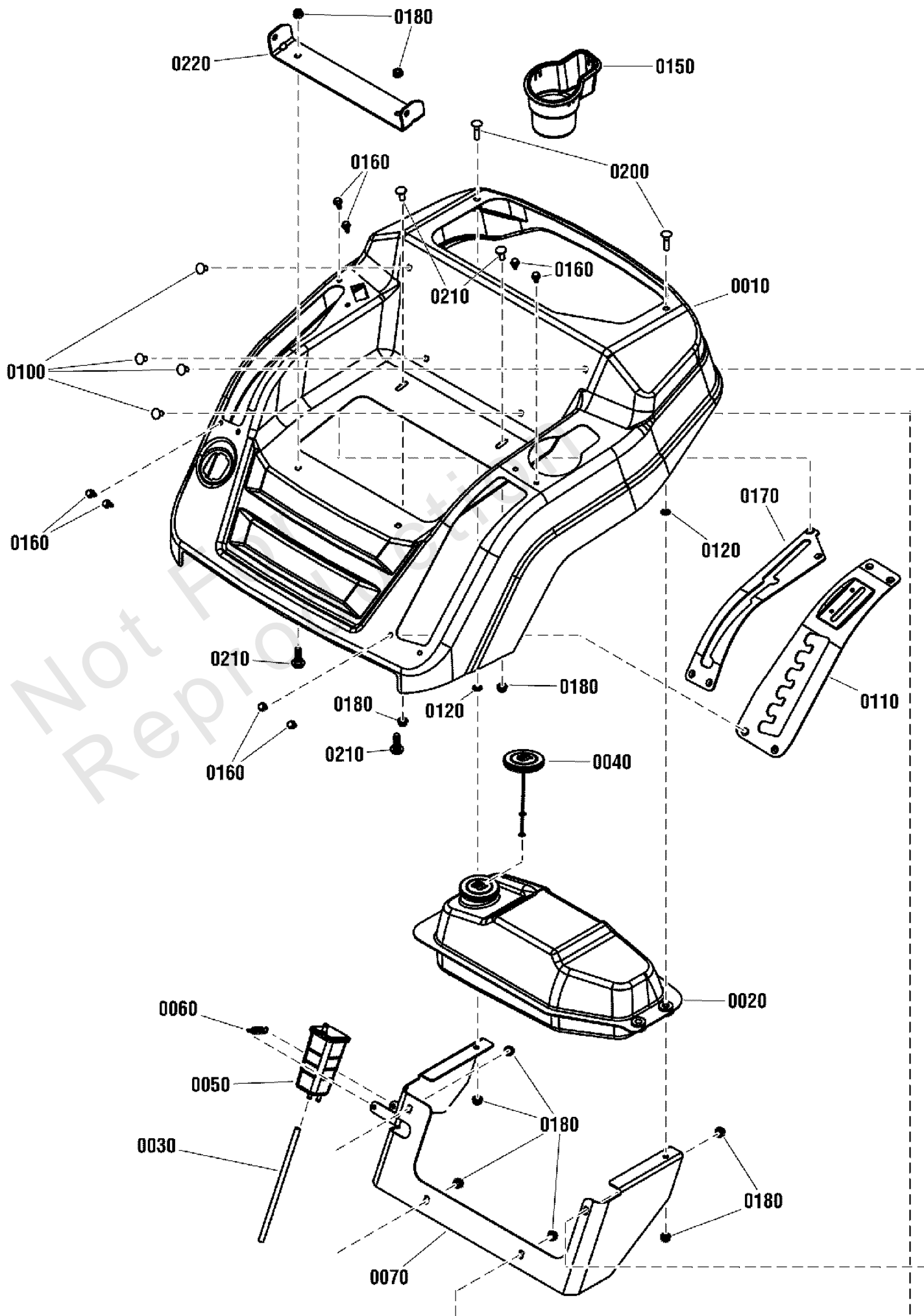
### 33" Deck Group

REF NO	PART NO	QTY	DESCRIPTION
0160	7105326YP	1	CHUTE, Side Discharge, 28"/33"
0600	7105871YP	1	ASSEMBLY, Mulching Cover, RER, 33"
0600-10	704005	1	PUSHNUT, CAP, 1/4
0600-20	7103309YP	2	SPRING, Torsion, Rear Door (Not Shown)
0600-30	7105346YP	1	HINGE, Chute, RER, 28"/33" (Not Shown)
0600-40	7105689YP	1	ROD, Chute .25 OD, 17.62" Long (Not Shown)
0600-50	7105870YP	1	COVER, Mulching, RER, 33" (Not Shown)
0760	7029624YP	1	PULLEY, Idler, .375 ID, 4 OD
0780	7032111YP	1	RESTRICTOR, Belt, 2.18" w/Lock Tab
0790	703406	1	CAPSCREW, 3/8-16X1.5
0820	703590	6	WASHER, FLAT, .406
0830	703117	3	NUT
0850	703350	4	WASHER
0890	703355	3	COTTER PIN, 3/8
0900	7105655YP	2	ROD, Rear Deck Lift, 5.5 Long, 3/8-16 Threads
0910	7105733YP	1	ROD, Front Deck Hangar, .38 Dia. X 9.16 Long
0920	7301363BMYP	1	PLATE, 33" Deck Hinge Support
0930	7105981YP	1	BELT, V, 71.75" EL, Double A
0940	7105982YP	1	CABLE, Brake, 37.4 OPC
0950	703408	3	CAPSCREW, 5/16-18
0960	703115	3	NUT
0970	7024085YP	1	NUT, 5/16-18 Wing (Nylon Patch)
0980	703185	1	BOLT, Round Head, Short Square Neck
0990	703297	1	RETAINER, GR5, 5/16
1000	7106061YP	1	COVER, Deck Spindle, 28"/33", RER
1010	703456	4	SCREW, 1/4-20 x 5/8 Hex Head Free Spin Washer Self-Tap, G5, ZC/CL

# Console & Gas Tank Group

Note: Unless noted otherwise, use the standard torque specifications

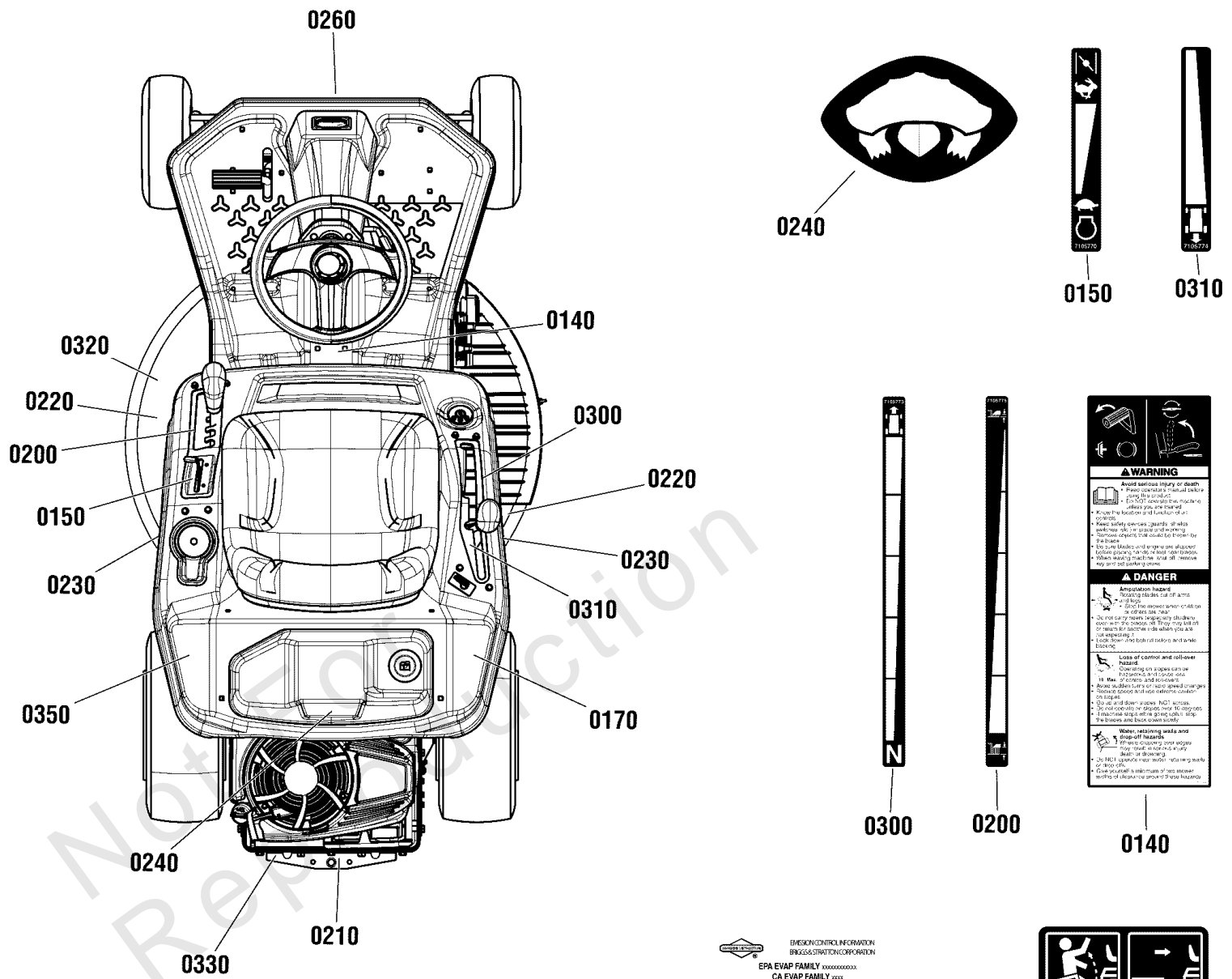
Mfg. No: 7800932-00





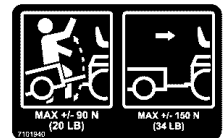
## Console & Gas Tank Group

REF NO	PART NO	QTY	DESCRIPTION
0010	7301218DYP	1	CONSOLE, Seat/Controls, Red
0020	7105576YP	1	ASSEMBLY, Fuel Tank
0030	7200138YP	1	HOSE, Vapor, 5 MM ID X 9 MM OD X 8.5"
0040	7105682YP	1	ASSEMBLY, Fuel Cap, Non-Vented
0050	7104634YP	1	CANISTER, Carbon, 140CC
0060	7104930YP	1	SPRING, Tension, 1.95" FWD React
0070	7301342BMYP	1	BRACKET, Fuel Tank Mounting
0100	703125	4	BOLT, 5/16-18 X .625, Carriage, GR5, Zinc/Clear
0110	7301262BMYP	1	PLATE, HOC Detent
0120	703297	2	RETAINER, GR5, 5/16
0150	7105766YP	1	CUP HOLDER
0160	703953	8	SCREW, 1/4-20X5/8
0170	7301364BMYP	1	PLATE, Shift Detent
0180	703409	8	NUT, 5/16-18, GR5
0190	7105075YP	2	CLAMP, Hose, .375 ID., .31 Wide
0200	703446	2	BOLT, 5/16-18X1.25 G5
0210	703185	4	BOLT, Round Head, Short Square Neck
0220	1750968BMYP	1	BRACKET, Seat Pivot



# RE130

EMERSON CONTROL INFORMATION  
BRIGGS & STRATTON CORPORATION  
EPA EVAP FAMILY xxxxxxxxxxxx  
CA EVAP FAMILY xxxxx  
THIS EQUIPMENT MEETS  
xxxxx US EPA AND CALIFORNIA  
EVP EMISSION REGULATIONS  
FOR SMALL OFF-ROAD  
ENGINES  
EVP ECS: xx  
DOM: MMY



**33"**  
**84cm**

**⚠ DANGER**  
Amputation and thrown objects hazard

- Keep hands and feet away from deck.
- Do not operate mower unless discharge chute or entire grass catcher is in its proper place.

**⚠ WARNING**  
Fire Hazard  
Gasoline is flammable. Debris is combustible.

- Allow engine to cool for at least 3 minutes before refueling.
- Do not fill tank above bottom of filler neck.
- Keep unit cleaned of debris.
- This equipment may create sparks that can start fires around dry vegetation. A spark arrester may be required. Contact local fire agencies for regulations relating to fire prevention requirements.



## Decals

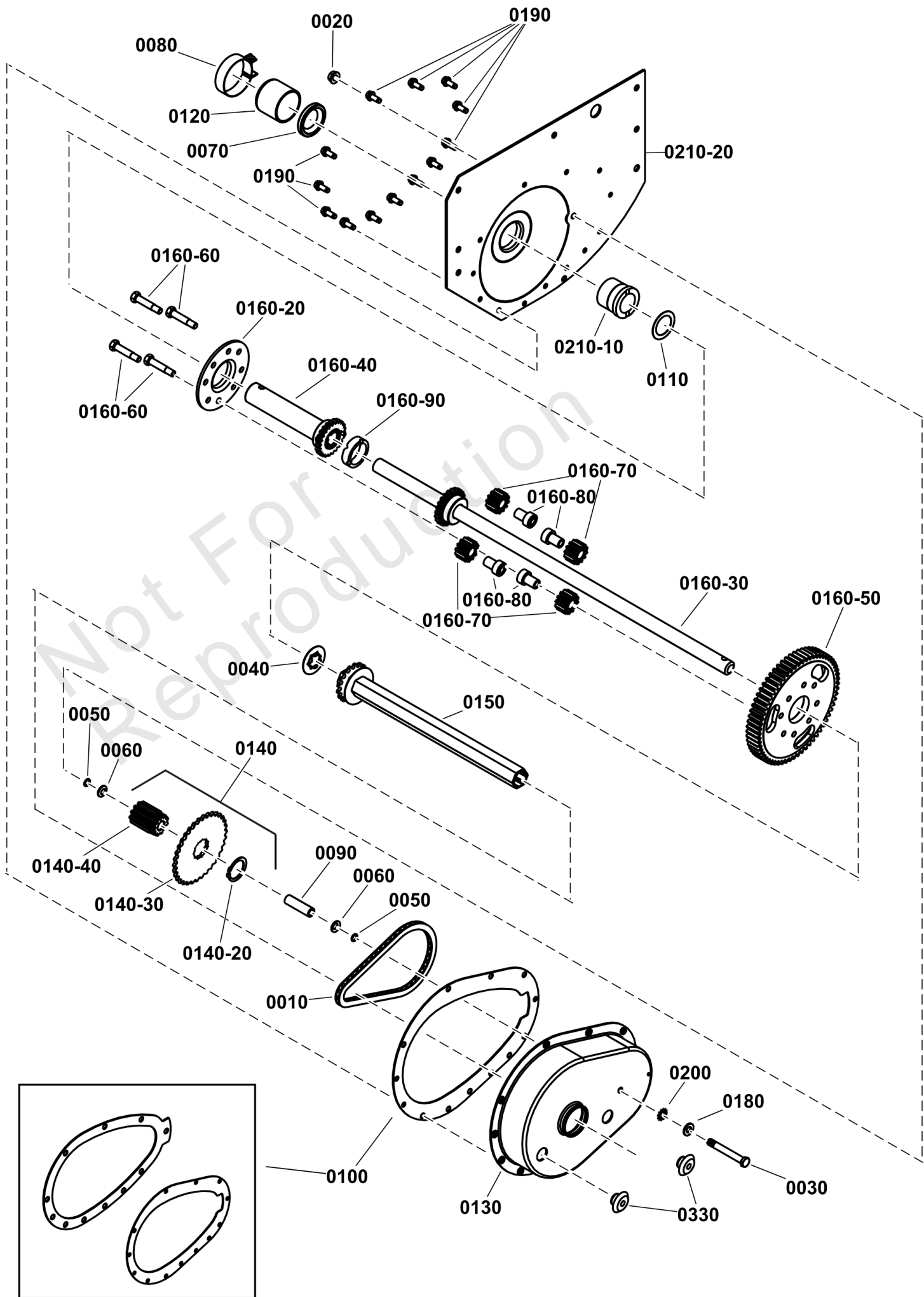
REF NO	PART NO	QTY	DESCRIPTION
0140	7105769YP	1	DECAL, Warning/Danger
0150	7105770YP	1	DECAL, Engine Speed
0170	7105772YP	1	DECAL, Fuel Warning
0200	7105775YP	1	DECAL, HOC
0210	7101940YP	1	DECAL, Weight Limitation
0220	7101665YP	2	DECAL, DANGER
0230	1755403YP	2	DECAL, Snapper Logo, 1.8" x 7.23"
0240	1752570YP	1	DECAL, Snapper Turtle
0260	1739983YP	1	DECAL, Snapper, 2.13" x 8.5"
0300	7105773YP	1	DECAL, Forward Speed
0310	7105774YP	1	DECAL, Reverse Speed
0320	1755713YP	1	DECAL, Mower Width 33" / 84CM
0330	1758059YP	1	DECAL, CARB/EPA, B&S Certified 2015
0350	7106370YP	1	DECAL, Model, RE130

Not For Reproduction

# Differential Assembly

Note: Unless noted otherwise, use the standard torque specifications

Mfg. No: 7800932-00



## Differential Assembly

REF NO	PART NO	QTY	DESCRIPTION
0010	7010941YP	1	CHAIN, 46 Pitch (#35 Endless)
0020	703123	1	NUT
0030	7011042YP	1	SCREW, 5/16-24 x 2-5/8 Hex Head Cap, ZP
0040	7011072YP	1	WASHER, Thrust, (Hex Flanged)
0050	7011156YP	2	O-RING, 5/16"
0060	7011782YP	2	WASHER, 5/16" X 5/8" X .05", Belleville
0070	7011817YP	1	SEAL, 1.22" ID x 1.875" OD
0080	7012332YP	1	CLAMP, 2" ID
0090	7021128YP	1	SPACER, .50 OD X .031 ID X 1.75 Long, Heat Treated
0100	7028762YP	1	KIT, GASKET
0110	7031079YP	1	WASHER, Thrust (1.37 ID, 1.625 OD)
0120	7031732YP	1	CAP, Seal 1.0" ID x 1.67" OD
0130	7037279YP	1	CASE, Transmission
0140	7050257YP	1	ASSEMBLY, Gear & Sprocket
0140-20	7010965YP	1	RETAINING RING
0140-30	7021129YP	1	SPROCKET, 34T, 3/8P
0140-40	7200128YP	1	GEAR, 11 Tooth, 10 Pitch, PM
0150	7051584YP	1	ASSEMBLY, Drive Hex Tube 13.2" Long
0160-20	7038067YP	1	PLATE, Differential, Heat Treated (8 holes)
0160-30	7075479YP	1	KIT, 23 Tooth Long Axle & Spacer (Includes 7047763 Axle & Spacer 7074431)
0160-40	7600137YP	1	KIT, Short Axle Assembly, 23T
0160-50	7021158YP	1	GEAR, 63 Tooth 10 Pitch (4 Hole)
0160-60	7012333YP	4	BOLT, 5/16-24 x 1-5/8 Hex Nylock, G5, Black
0160-70	7021127YP	4	GEAR, Differential Pinion (12T, 12P)
0160-80	7022115YP	4	SPACER, Pinion
0160-90	7074431YP	1	SPACER, Differential (1.25" ID x .425 Wide)
0180	703350	1	WASHER
0190	703054	13	SCREW, 1/4-20X0.625
0200	703138	1	WASHER
0210-10	7012296YP	1	BEARING, Axle, 1.126 ID, 1.626 OD, PM
0210-20	7301301YP	1	FENDER, RH
0330	7011024YP	2	PLUG, 3/4"
0380	7061017YP	1 Qt.	GREASE, "00" (Not Shown)

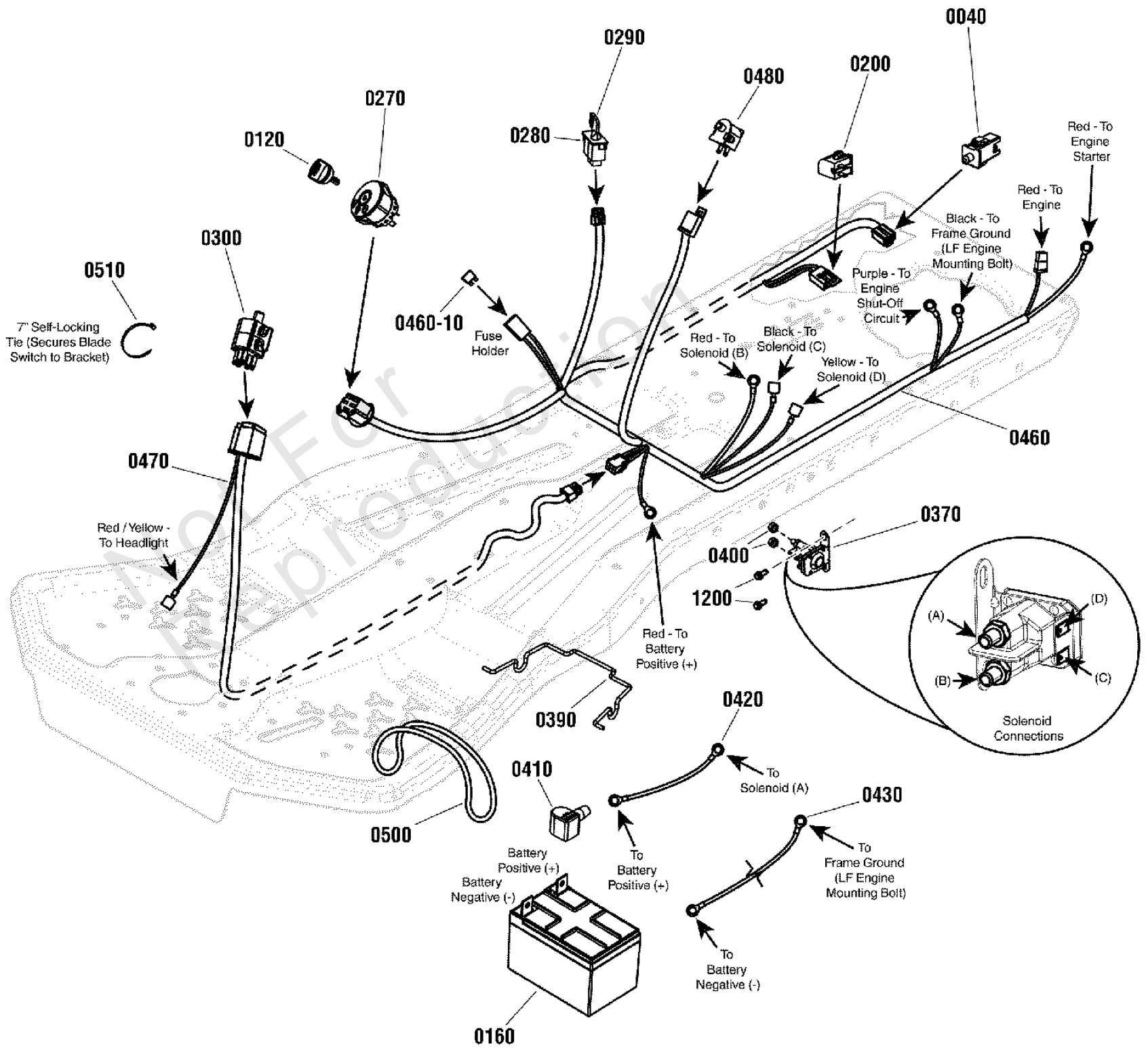
# Electrical Group

Note: Unless noted otherwise, use the standard torque specifications

Mfg. No: 7800932-00

7503075

NOTE: Relative size, location and orientation of components may differ from shown.



## Electrical Group

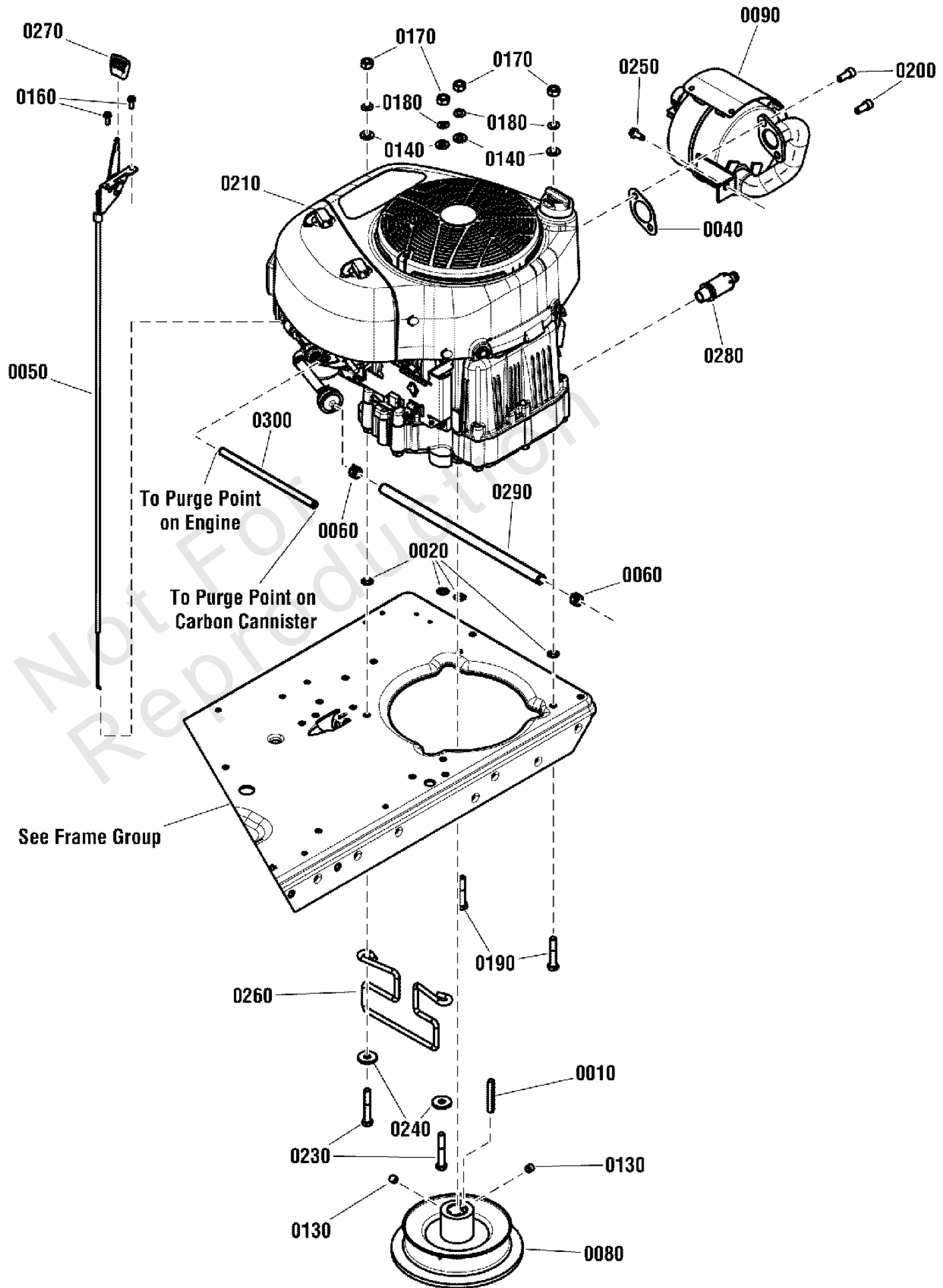
REF NO	PART NO	QTY	DESCRIPTION
0040	7022886YP	1	SWITCH, DP NO/NC SNAP
0120	1750464YP	1	KEY, Ignition Switch, Trombetta Snap-in Switch (Blister Pack contains 2 keys)
0160	7600188YP	1	BATTERY 12V 20HR: 190CCA (Includes Cable Attachment Hdwe.)
0200	1732004SM	1	SWITCH-PUSH BUTTON
0270	1737959YP	1	SWITCH, Ignition (Trombetta)
0280	1726556SM	1	SWITCH, Reverse Mow Option Module (Without Key)
0290	1726557SM	1	KEY, RMO Module (Yellow)
0300	1751449YP	1	SWITCH, Plunger, Snap In (NO/NC/NC)
0370	1755381YP	1	SOLENOID, L-BRACKET
0390	7105788YP	1	BRACE, Battery
0400	2860750SM	2	NUT-HEX KEPS 5/16-24
0410	7105082YP	1	BOOT, Insulator
0420	7105876YP	1	WIRE, Positive, 8GA X 10", Red
0430	7105875YP	1	WIRE, Negative, 8GA X 27.5", Black
0460	7105730YP	1	HARNESS, Main Wiring, 11.5TP
0460-10	7023653YP	1	FUSE, 20 Amp
0470	7105697YP	1	HARNESS, Solenoid, 41"
0480	7023354YP	1	SWITCH, SEAT
0500	1665872SM	1	STRAP, Rubber Battery, .19" SQ, 7.88" OD, Black
0510	703586	1	TIE, SELF LOCKING
1200	703054	2	SCREW, 1/4-20X0.625

# Engine Group

Note: Unless noted otherwise, use the standard torque specifications

Mfg. No: 7800932-00

7503097





## Engine Group

REF NO	PART NO	QTY	DESCRIPTION
0010	7010210SM	1	KEY, 1/4X2, Square
0020	703297	4	RETAINER, GR5, 5/16
0040	7015352SM	1	GASKET, Exhaust
0050	7105917YP	1	ASSEMBLY, Throttle Control, 11.5 HP, 23.26" + 1.6" Travel
0060	7029900SM	2	CLAMP, .490 X .31, Fuel Hose
0080	7074187YP	1	DISC, Steel Drive, 5.15" OD Pulley
0090	7074453YP	1	MUFFLER, W/Heat Shield
0130	7090132YP	2	SCREW, 3/8-16 x 3/8" Hex Recess Set
0140	703350	4	WASHER
0160	7090913SM	2	SCREW, #10-24 x 1/2" Hex Washer Self-Tap (Torx), Zinc/Clear
0170	703331	4	NUT, 5/16-24
0180	703116	4	LCKWSHR
0190	7091513YP	2	SCREW, 5/16-24X1-3/4
0200	7091738SM	2	SCREW, 5/16-18 X 3/4, Allen Socket Head, GR8 BZ
0210	219807-0001-G5	1	* ENGINE, B&S, 12.5HP Powerbuilt, Model 219807-0001-G5
0230	704056	2	CAPSCREW, 5/16-24X2
0240	703298	2	WASHER, 5/16
0250	703054	1	SCREW, 1/4-20X0.625
0260	7105173BMYP	1	GUIDE, Belt, 1/4" Wire, 1.45" X 5" ID, 3.72" Tall, 5.74" Mount
0270	7106008YP	1	KNOB, Molded Paddle, Black
0280	7027972SM	1	OIL VALVE ASSY.
0290	7200116YP	1	HOSE, 1/4" ID X 14", Fuel
0300	7106046YP	1	HOSE, Vapor - 18" L, 5 MM ID

---

**Footnotes:**

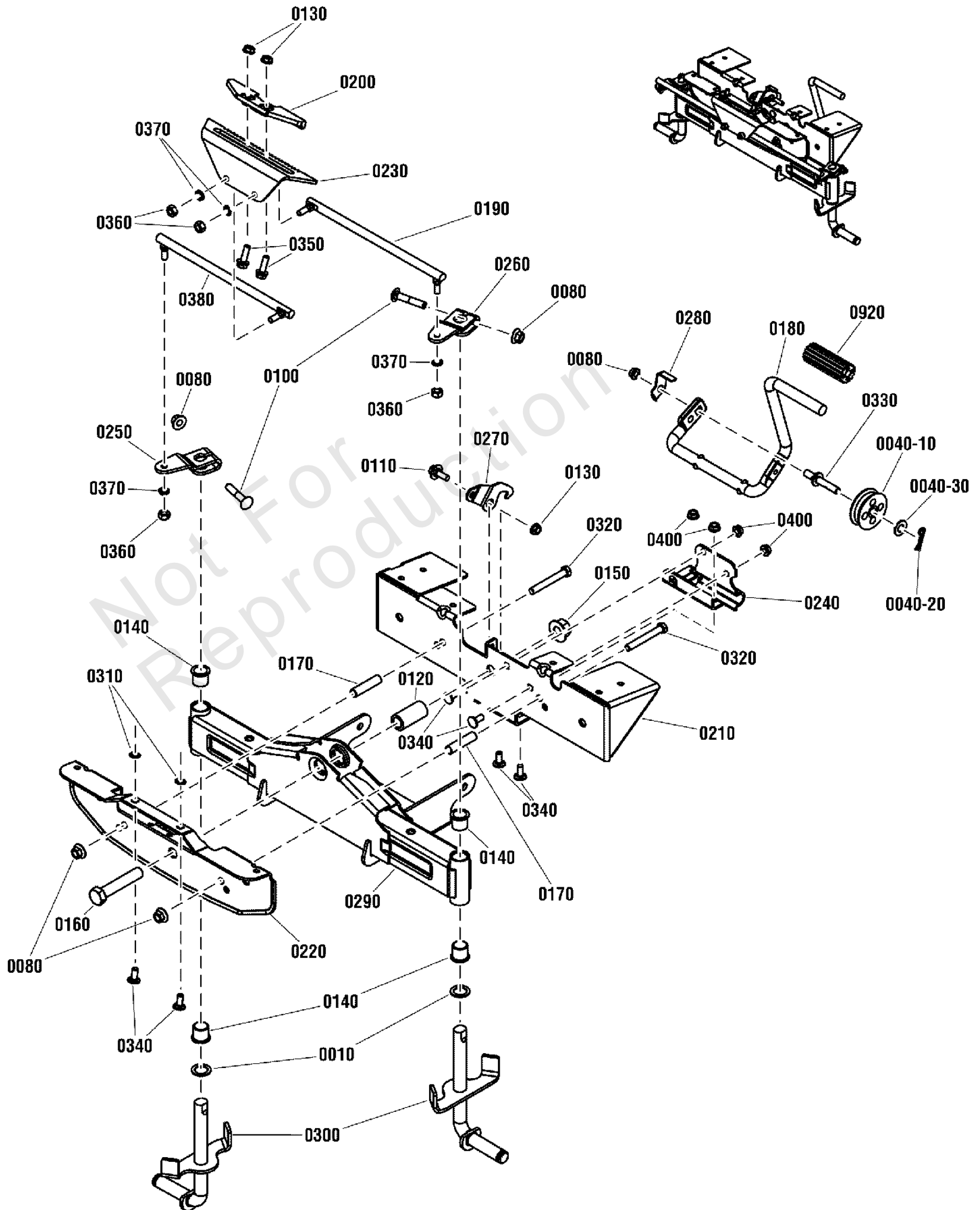
Note: \* Purchase engine parts from engine manufacture dealer.

# Front Axle Group 11" Wheels

Note: Unless noted otherwise, use the standard torque specifications

Mfg. No: 7800932-00

7503106



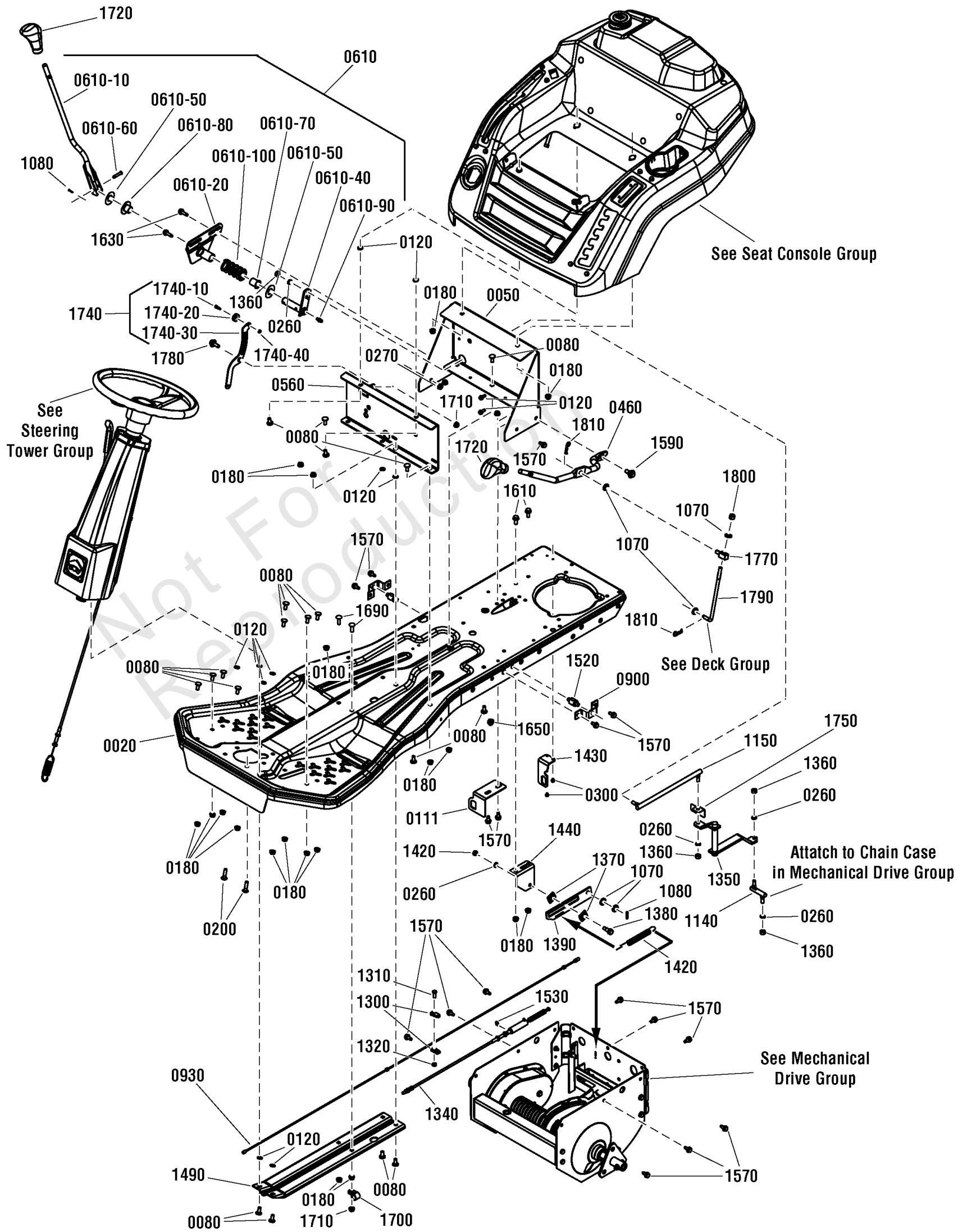
## Front Axle Group 11" Wheels

REF NO	PART NO	QTY	DESCRIPTION
0010	7010935SM	2	FW, .77X1.13X.06
0040-10	7023182YP	1	SPOOL
0040-20	703430	1	PIN, 13X1.19
0040-30	703590	1	WASHER, FLAT, .406
0080	703893	5	NUT, CNTR LCK, 3/8-16
0100	002X92MA	2	BOLT, 3/8-16 x 2 Square Neck Carriage
0110	1716654SM	1	BOLT, 5/16-18 X 0.75, .50 Shoulder, G5 YZ
0120	1738193YP	1	SPACER, .641 ID X.980 OD X 2.0 Long
0130	704067	4	NUT, HEX FLNG,5/16-18
0140	2176440SM	4	BUSHING-0.765IDX
0150	2860646SM	1	NUT, 5/8-11, Hex Flange Two Way Lock, Yellow
0160	2860744SM	1	CAPSCREW, Hex Head, 5/8-11 x 3 1/4
0170	7026595YP	2	SPACER, .495 OD X .390 ID X 2.038 Long
0180	7105142YP	1	PEDAL, Brake
0190	7105916YP	1	LINK, Drag 10" Lg, 90° X 5/16-24 Ball Joints, LH
0200	7105857YP	1	PLATE, Rack Guide
0210	7301259YP	1	BRACKET, Rear Axle
0220	7301282YP	1	BRACKET, Front Axle
0230	7301283YP	1	RACK, Steering
0240	7301317YP	1	BRACKET, Brake Pedal
0250	7301337BMYP	1	ARM, Steering, RH
0260	7301338BMYP	1	ARM, Steering, LH
0270	7301351YP	1	PLATE, Park Brake
0280	7301352YP	1	GUIDE, Clutch Cable
0290	7400323YP	1	WELDMENT, Axle
0300	7400332BMYP	2	WELDMENT, Spindle 11"
0310	703297	2	RETAINER, GR5, 5/16
0320	703133	2	HHCS,3/8-16X2.750
0330	703956	1	STUD, 3/8-16 X 2.625, Special Shoulder, GR5
0340	703185	6	BOLT, Round Head, Short Square Neck
0350	703410	2	BOLT,5/16-18X1
0360	703331	4	NUT, 5/16-24
0370	703116	4	LCKWSHR
0380	7105148YP	1	LINK, Shift, 10" Lg, 90° X 5/16-24 Ball Joints, RH
0400	703409	4	NUT, 5/16-18, GR5
0920	1727261SM	1	PEDAL-BRAKE BLACK RUB

# Main Frame Group

Note: Unless noted otherwise, use the standard torque specifications

Mfg. No: 7800932-00



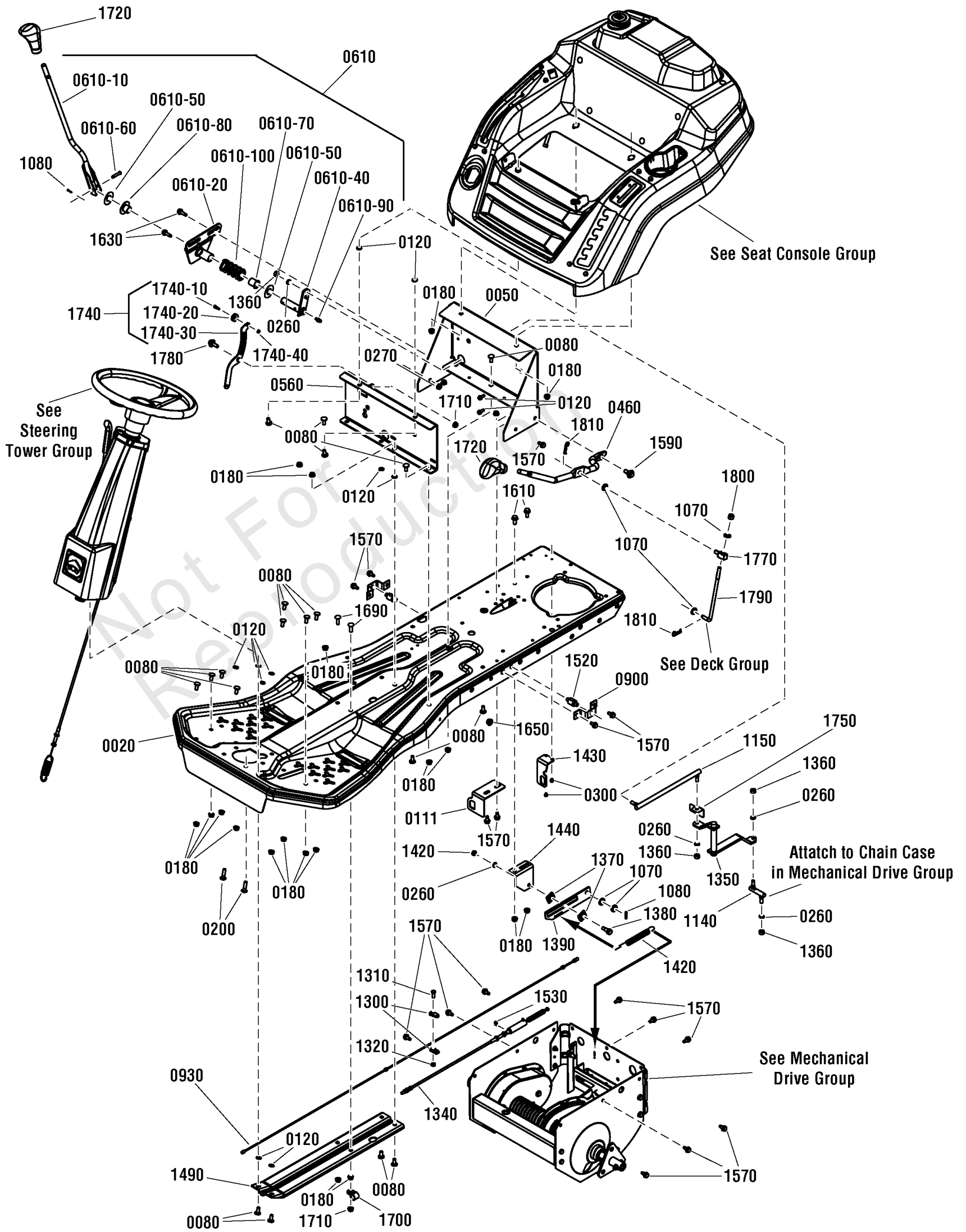
## Main Frame Group

REF NO	PART NO	QTY	DESCRIPTION
0020	7301311DYP	1	MAIN FRAME, Mechanical, RER
0050	7301222BMYP	1	BRACKET, Console Support
0080	703185	21	BOLT, Round Head, Short Square Neck
0111	7301371BMYP	1	BRACKET, Reverse Stop Switch
0120	703297	10	RETAINER, GR5, 5/16
0180	703409	25	NUT, 5/16-18, GR5
0200	703446	2	BOLT, 5/16-18X1.25 G5
0260	703116	7	LCKWSHR
0270	703465	2	NUT, 5/16-18, GRB, Zinc/Clear
0300	7090981YP	2	SCREW, 10-32 x 1/4 Hex Washer Self-Tap, BZ
0460	7105822BMYP	1	ROD, Deck Lift, RER
0560	7301330BMYP	1	BRACKET, Seat Hinge Support
0610	----	1	ASSEMBLY, Speed Selector (Reference)
0610-10	7400320YP	1	WELDMENT, Speed Select Lever
0610-20	7400319YP	1	WELDMENT, Speed Select Bracket
0610-40	7043201YP	1	WELDMENT, Shift Arm
0610-50	7031036YP	2	WASHER, Thrust .76 ID, 1.62 OD, .025 Thick
0610-60	7023914YP	1	CLEVIS PIN, .25X1.63
0610-70	7019246YP	1	BUSHING, 3/4 ID, 1 Flange (Nylon)
0610-80	7019245YP	1	BUSHING, 3/4 ID, 1.62 Flange (Nylon)
0610-90	7010817SM	1	FITTING, Lube (Straight press fit for .187 hole, no ball)
0610-100	7010754YP	1	SPRING, Shift Detent
0900	7301336BMYP	2	BRACKET, Rear Deck Lift
0930	7105152YP	1	CABLE, Clutch, 56.75 Long (2 floating & 2 fixed furrels)
1070	703590	5	WASHER, FLAT, .406
1080	703312	2	PIN, COTTER, 3/32X.75
1140	7011018YP	1	SHIFT LINK, Short (1.44 Long, 5/16-24 thread)
1150	7105148YP	1	LINK, Shift, 10 Lg, 90° X 5/16-24 Ball Joints, RH
1300	7034174YP	2	CONNECTOR, Cable (Single Part)
1310	703925	1	CAPSCREW, 1/4-20X.75
1320	703954	1	NUT, Centerlock, 1/4-20, GR5
1340	7105151YP	1	CABLE, Brake, Snap-in, 40.89"
1350	7041384BMYP	1	SHIFT ARM
1360	703331	4	NUT, 5/16-24
1370	7014663YP	2	SLIDE HALF
1380	703428	1	BOLT, 5/16-18 x .530 Shoulder, GR 2, Zinc/Clear
1390	7047190BMYP	1	SLIDE, DRIVE SUPPORT
1420	7013885YP	1	SPRING, Clutch / Brake
1430	7073735YP	1	BRACKET, Switch
1440	7047189BMYP	1	BRKT, DRIVE SUPPORT
1490	7301349BMYP	1	BRACE, Frame, RER
1520	7105736YP	2	SWIVEL, .390 Dia., Thru Hole
1530	7012313SM	1	RING, RETAINING
1570	703949	16	SCREW, 5/16-18.625
1590	702315	1	BOLT, SHOULDER
1610	9357MA	2	SCREW, 5/16-18X .75WD
1630	7091841SM	2	SCREW, 5/16-18 X 1, Hex Washer Self-Tap, GR 5 YZ
1650	703893	1	NUT, CNTR LCK, 3/8-16
1690	703483	2	BOLT, 5/16-18X1.000, RO
1700	7900020SM	2	CLIP, Harness, 5/8
1710	1935048SM	3	NUT, 5/16-18 Hex Flange Two-Way Lk Ga

# Main Frame Group

Note: Unless noted otherwise, use the standard torque specifications

Mfg. No: 7800932-00



## Main Frame Group

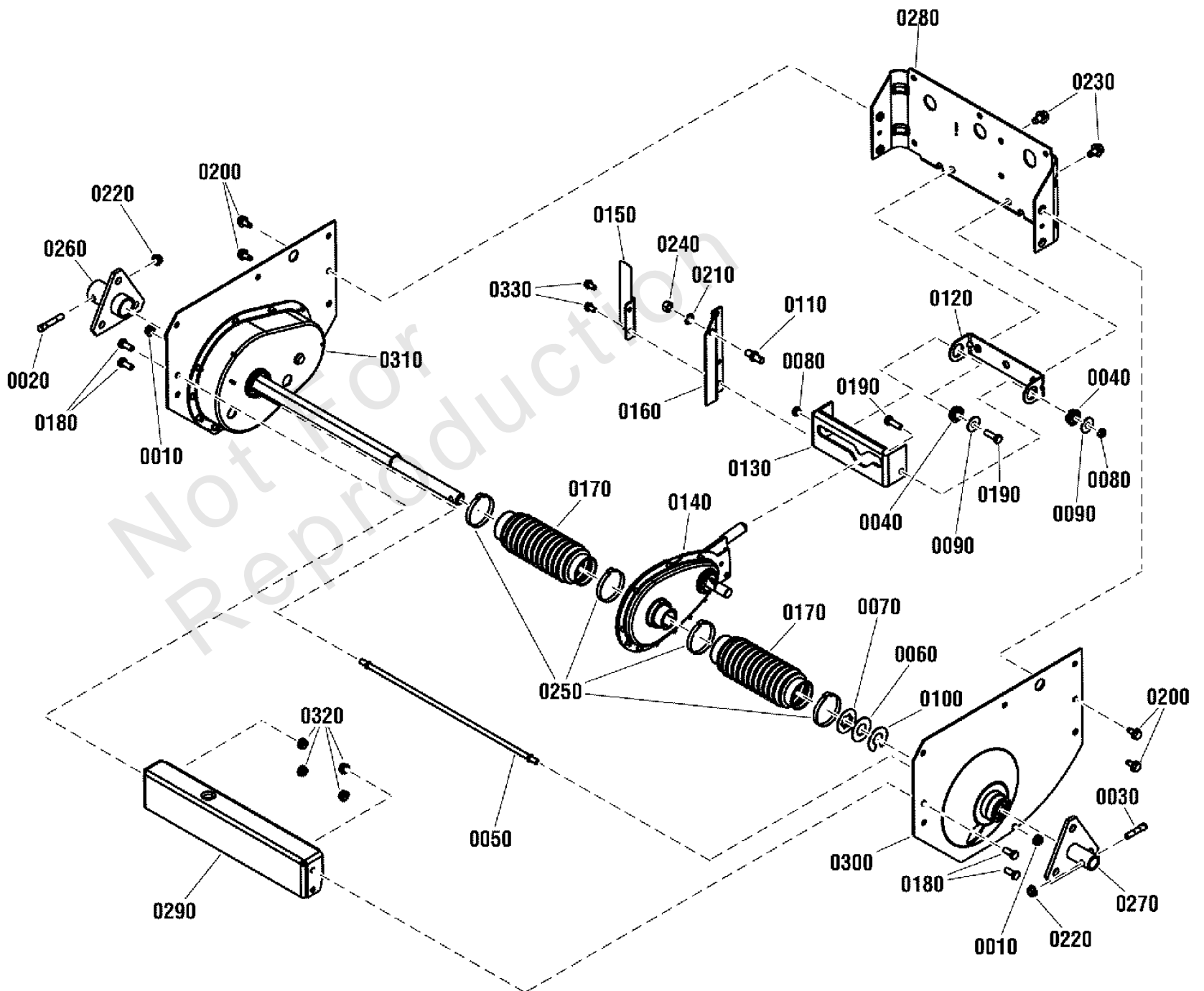
REF NO	PART NO	QTY	DESCRIPTION
1720	7105767YP	2	KNOB, HOC/Speed Selector, 1/2 Hole
1740	-----	1	ASSEMBLY, OPC Roller (Reference)
1740-10	7106025YP	1	ROLLER, .265 X 1.312 X .344
1740-20	703960	1	BOLT, 10-24 X .750, Shoulder, GR8, Zinc/Clear
1740-30	7301367BMYP	1	PLATE, Roller OPC
1740-40	7091267SM	1	NUT, 10-24, Hex Center Lock, BZ
1750	7301370YP	1	PADDLE, Reverse Switch
1770	7072495SM	2	SWIVEL, 3/8 W/ Thru Hole, YZ
1780	1716654SM	1	BOLT, 5/16-18 X 0.75, .50 Shoulder G5 YEL
1790	7105735YP	1	LINKAGE, 3/8 Deck Rod
1800	703117	1	NUT
1810	703300	2	PIN, 3/32 X 1.6

Not For Reproduction

# Mechanical Drive Assembly RER

Note: Unless noted otherwise, use the standard torque specifications

Mfg. No: 7800932-00





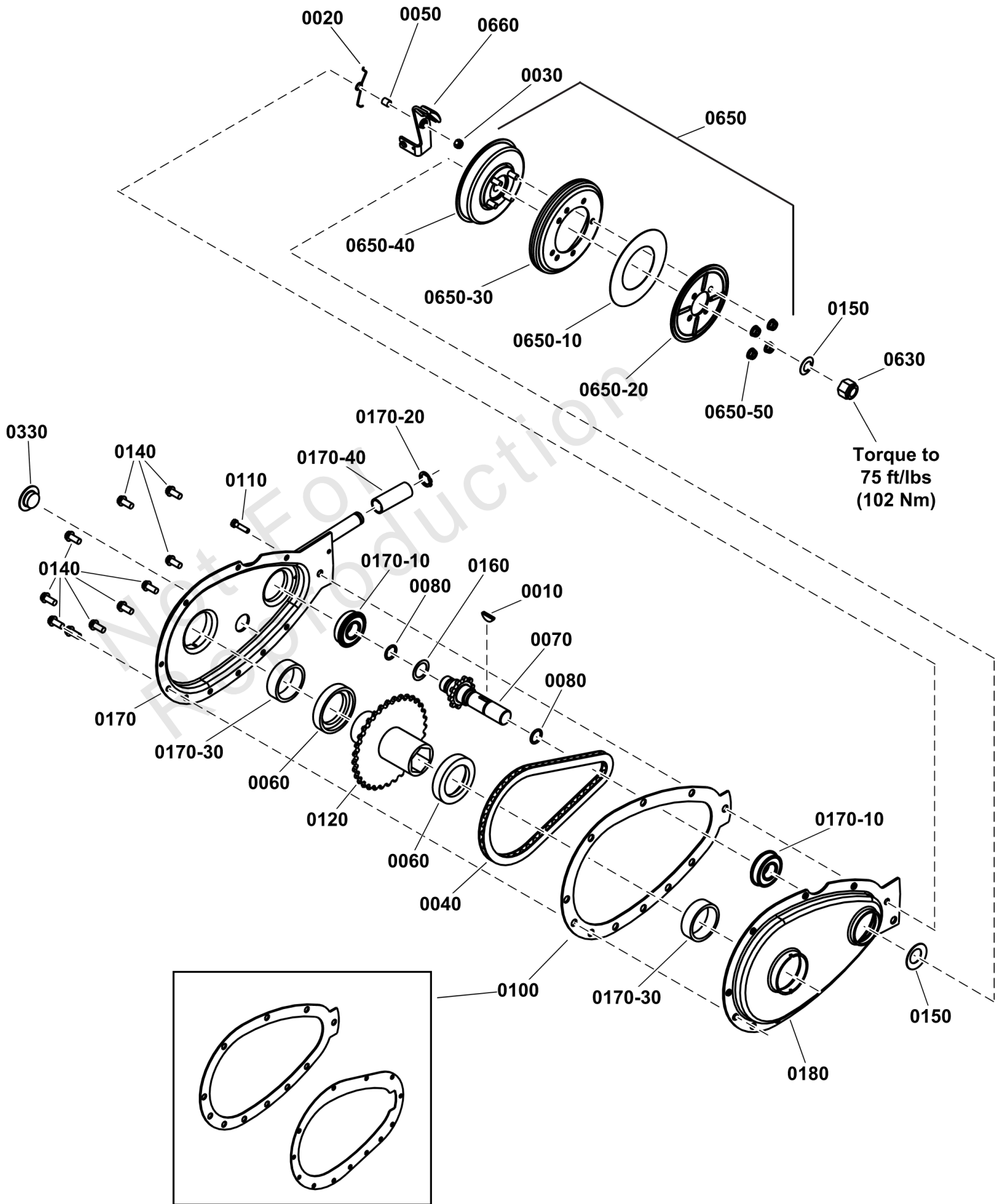
## Mechanical Drive Assembly RER

REF NO	PART NO	QTY	DESCRIPTION
0010	703123	2	NUT
0020	7011013YP	1	BOLT, 5/16-24 x 2 Tapered, Axle (Right Hand)
0030	7011035YP	1	BOLT, 5/16-24 x 1-5/8 Tapered, Axle (Left Hand)
0040	7011048YP	2	BEARING, Yoke
0050	7011070YP	1	TIE ROD, (5/16-24 thread- both ends)
0060	7011071YP	2	WASHER, Thrust, (.765 ID, 1.625 OD)(Nylon)
0070	7011072YP	1	WASHER, Thrust, (Hex Flanged)
0080	703459	2	NUT, HEX, 5/16-24
0090	7011763SM	2	WASHER, 5/16" I.D. 1" O.D. Fender
0100	7012271YP	1	WASHER, Notched Shim, Nylon (Can make from 7011071)
0110	7015464YP	1	STUD, Clutch Link (3/8-24 thread)
0120	7033291YP	1	COLLAR, Yoke
0130	7046162YP	1	YOKE
0140	7052683YP	1	ASSEMBLY, Primary Chain Case (See Primary Chaincase Assembly Group)
0150	7059068YP	1	ASSEMBLY, Leaf Spring
0160	7073733YP	1	ARM, YOKE
0170	7075115YP	2	BOOT, Rear Axle, Thick Flange
0180	1921332SM	4	SCREW, 5/16-18 x 3/4 Hex Head Cap, GR 5, YZ
0190	703301	2	BOLT, HEX, 5/16-24X1
0200	703949	4	SCREW, 5/16-18.625
0210	703930	1	WASHER, INT LCK, 3/8
0220	704279	2	NUT, 5/16-24 Hex Flange Lock, BZ
0230	7091198SM	2	SCREW, 3/8-16 x 5/8 Hex Washer Self-Tap, BP
0240	703895	1	NUT, HEX, 3/8-24
0250	7105184YP	4	CLAMP, 2" ID, Oetiker
0260	7040433YP	1	HUB, Rear Wheel, 3 Hole 1.25" ID, RH
0270	7040434YP	1	WHEEL HUB, LH
0280	7301297YP	1	PLATE, Rear Hitch
0290	7301325YP	1	BRACKET, Cross Brace
0300	7503036YP	1	ASSEMBLY, LH Fender, RER-RE
0300-20	7301302YP	1	FENDER, LH
0300-30	7074182YP	2	BEARING, 3/4" ID, DX (Not Shown)
0300-40	7052827YP	1	BEARING, AXLE, 3/4" (Includes 7074182, 7074500, & 7075848) (Not Shown)
0300-50	7074500YP	1	SEAL, .750X1.25X.25, Dust / Grease (Not Shown)
0300-60	7075848YP	1	FITTING, Lube, 45 Degree, 3/16 w/Hex (long shank) (Not Shown)
0310	7503037YP	1	ASSEMBLY, Differential Case, 4 Pinion, RER-RE
0320	703409	4	NUT, 5/16-18, GR5
0330	B4300GS	2	SCREW, 1/4-20X.500, Hex HD, Self-Tap, Zinc/Clear

# Primary Chain Case

Note: Unless noted otherwise, use the standard torque specifications

Mfg. No: 7800932-00



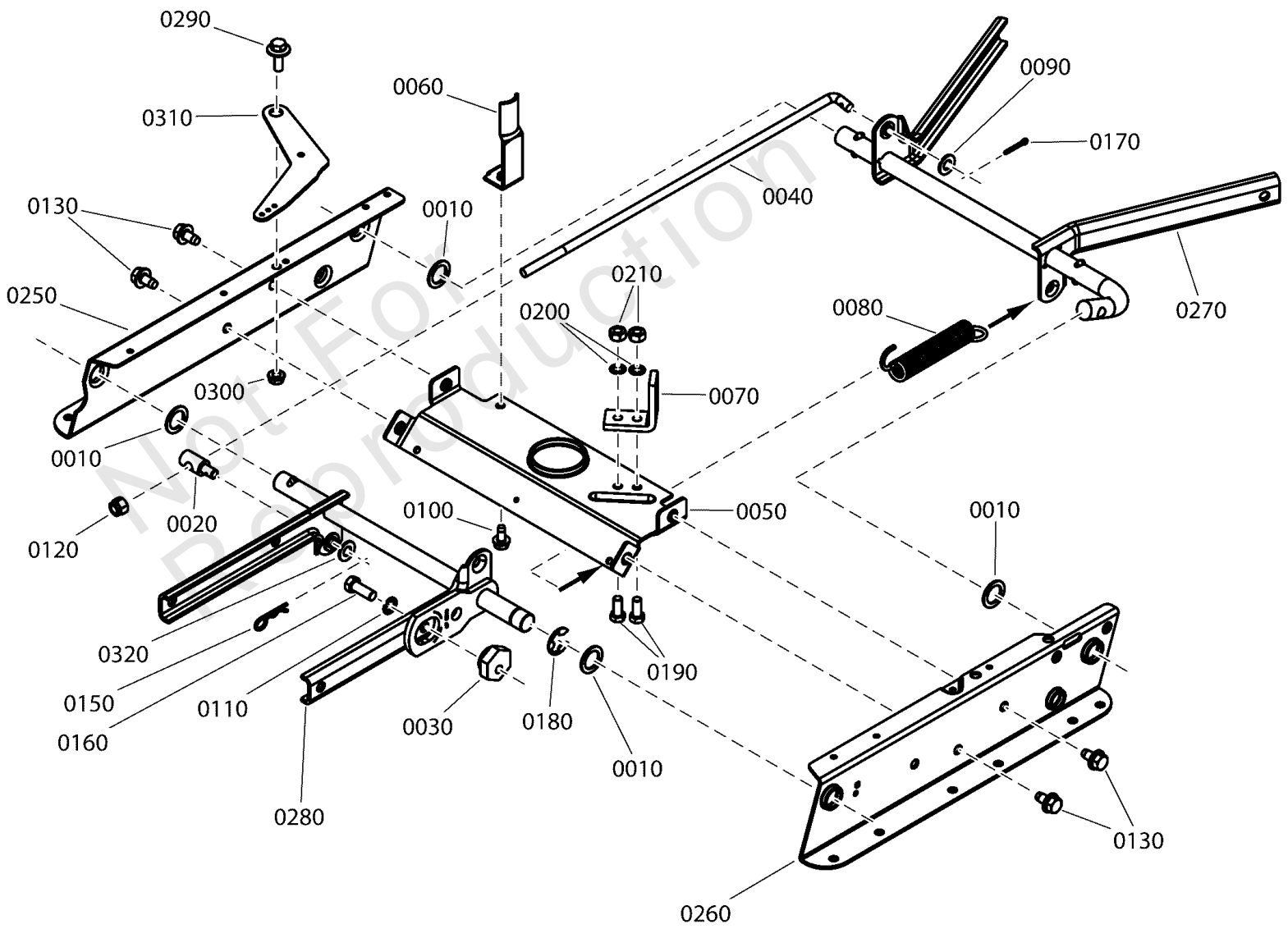
## Primary Chain Case

REF NO	PART NO	QTY	DESCRIPTION
----	7052683YP	1	ASSEMBLY, Primary Chain Case -(Contains all except Rubber Disc and Brake related parts)
0010	7010614YP	1	KEY, #5 (1/8 x 5/8) Woodruff
0020	7072406YP	1	SPRING, Brake Return Torsion
0030	703972	1	NUT, HEX TOP, 1/4-28 -(Was 7090303)
0040	7010941YP	1	CHAIN, 46 Pitch (#35 Endless)
0050	7072593YP	1	SPACER, Brake Arm Pivot (.265 ID, .375 OD, .418 long)
0060	7011086YP	2	WASHER, Thrust, Nylon
0070	7018963YP	1	WELDMENT, Sprocket & Shaft
0080	7019260YP	2	O-RING, 1/2 x 5/8"
0100	7028762YP	1	KIT, GASKET
0110	7091504YP	1	SCREW, 1/4-28 X 1, Hex HD, GR5 BZ
0120	7040355YP	1	WELDMENT, Hub & Sprocket
0140	704060	10	SCREW, HEX, #10-24X.5
0150	7011121SM	2	WASHER, Belleville .64 x 1.125 x .028
0160	7027981YP	1	WASHER, Wave .625 x .875
0170	7041136YP	1	WELDMENT, Primary Chain Case Half, RH
0170-10	7010756YP	2	BEARING, Ball 5/8 ID x 1-3/8 OD
0170-20	7010776YP	1	RING, 1/2 RETAINING
0170-30	7010942YP	2	BEARING, Needle 1.355 ID x 1.6245 OD x .5 Wide
0170-40	7022785YP	1	ROLLER, 1-3/8 Long
0180	7039778YP	1	COVER, Primary Chain Case, LH
0330	7011024YP	1	PLUG, 3/4"
0630	703432	1	NUT, NYLOCK, 5/8-18
0650	7600136YP	1	KIT, Smooth Clutch Assembly
0650-10	7014523YP	1	WASHER, Thrust
0650-20	7032331YP	1	PLATE, Smooth Clutch
0650-30	7600135YP	1	DRIVEN DISC, Rubber, Smooth Start Clutch
0650-40	7600142YP	1	KIT, HUB & CUP -(Incl. Ref. 0650-60)
0650-50	703123	4	NUT
0650-60	703935	4	BOLT, 5/16-24X1.125
0660	7052497YP	1	ASSY, BRAKE LEVER

# Rail Assembly

Note: Unless noted otherwise, use the standard torque specifications

Mfg. No: 7800932-00



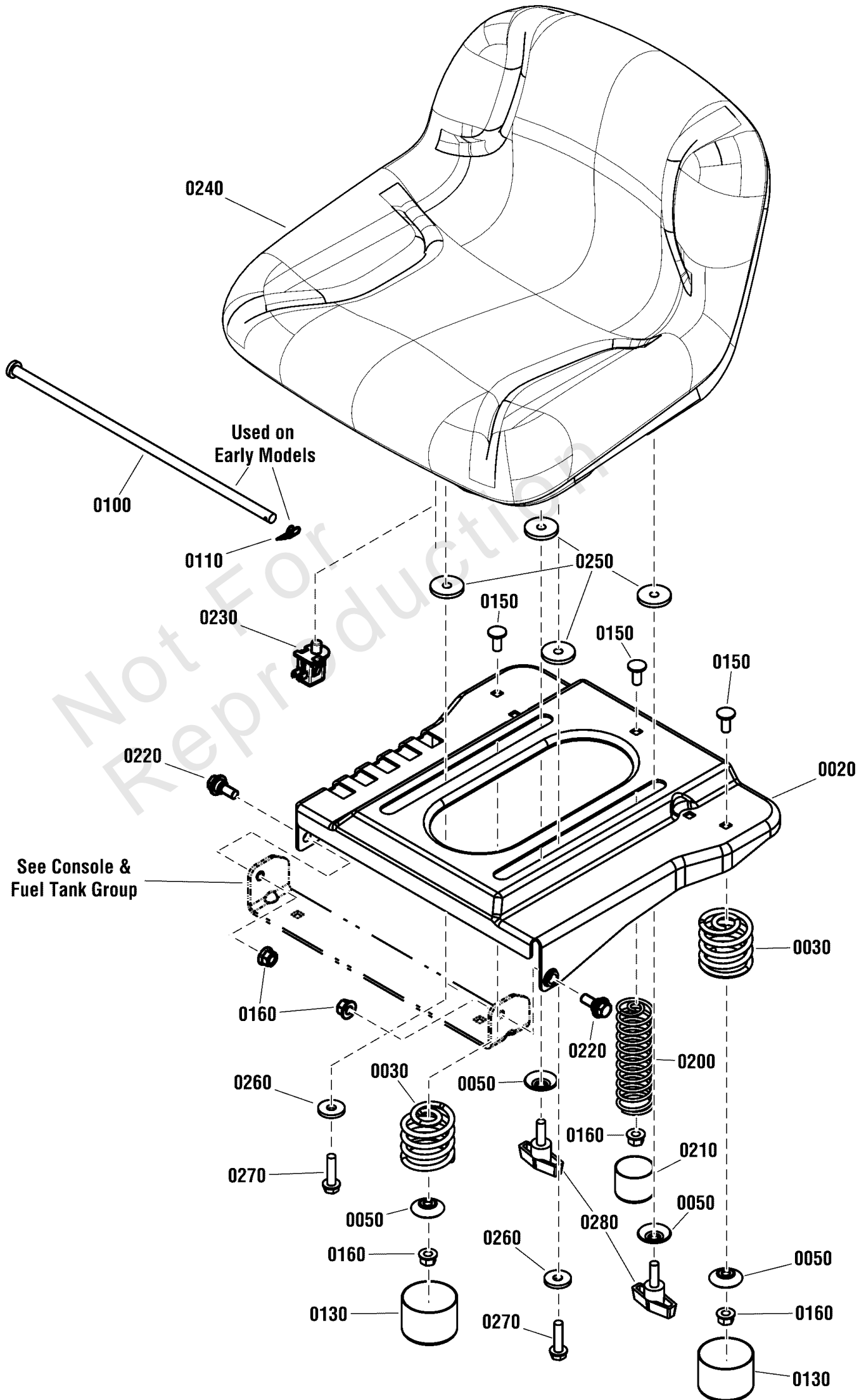
## Rail Assembly

REF NO	PART NO	QTY	DESCRIPTION
0010	7010935SM	4	FW, .77X1.13X.06
0020	7011231SM	1	SWIVEL, 3/8 w/thru hole, Special
0030	7015447YP	1	ECCENTRIC, Leveling
0040	7016122YP	1	ROD, Leveling (3/4-24 thread)
0050	7031838BMYP	1	BRACE, TOP ECOAT
0060	7031855YP	1	GUIDE, Belt
0070	706321	1	ANCHOR
0080	7046163YP	1	SPRING, Assist
0090	703590	2	WASHER, FLAT, .406
0100	703949	1	SCREW, 5/16-18.625
0110	703930	1	WASHER, INT LCK, 3/8
0120	703901	1	NUT, HEX, 3/8-24
0130	7091198SM	4	SCREW, 3/8-16 x 5/8 Hex Washer Self-Tap, BP
0150	703300	1	PIN, 3/32 X 1.6
0160	001X20MA	1	BOLT,HEX.37 24X1.00 Z
0170	703958	1	PIN, 1/8 X 0.75
0180	0011X3MA	1	RING, E .750D .050T
0190	703336	2	CAPSCREW, 5/16-24X.75
0200	7090391SM	2	WASHER, 5/16, Internal Lock, Zinc/Clear
0210	703331	2	NUT, 5/16-24
0250	7301328YP	1	RAIL, Deck Lift RH
0260	7301329YP	1	RAIL, Deck Lift LH
0270	7400324YP	1	WELDMENT, Rear Lift Arm, RER-RE
0280	7400328YP	1	WELDMENT, Front Lift Arm, Adjustable
0290	1716654SM	1	BOLT, 5/16-18 X 0.75, .50 Shoulder, G5 YZ
0300	704067	1	NUT, HEX FLNG,5/16-18
0310	7301366YP	1	PLATE, Brake OPC
0320	1960103SM	1	WASHER, 3/8"

# Seat Group

Note: Unless noted otherwise, use the standard torque specifications

Mfg. No: 7800932-00



## Seat Group

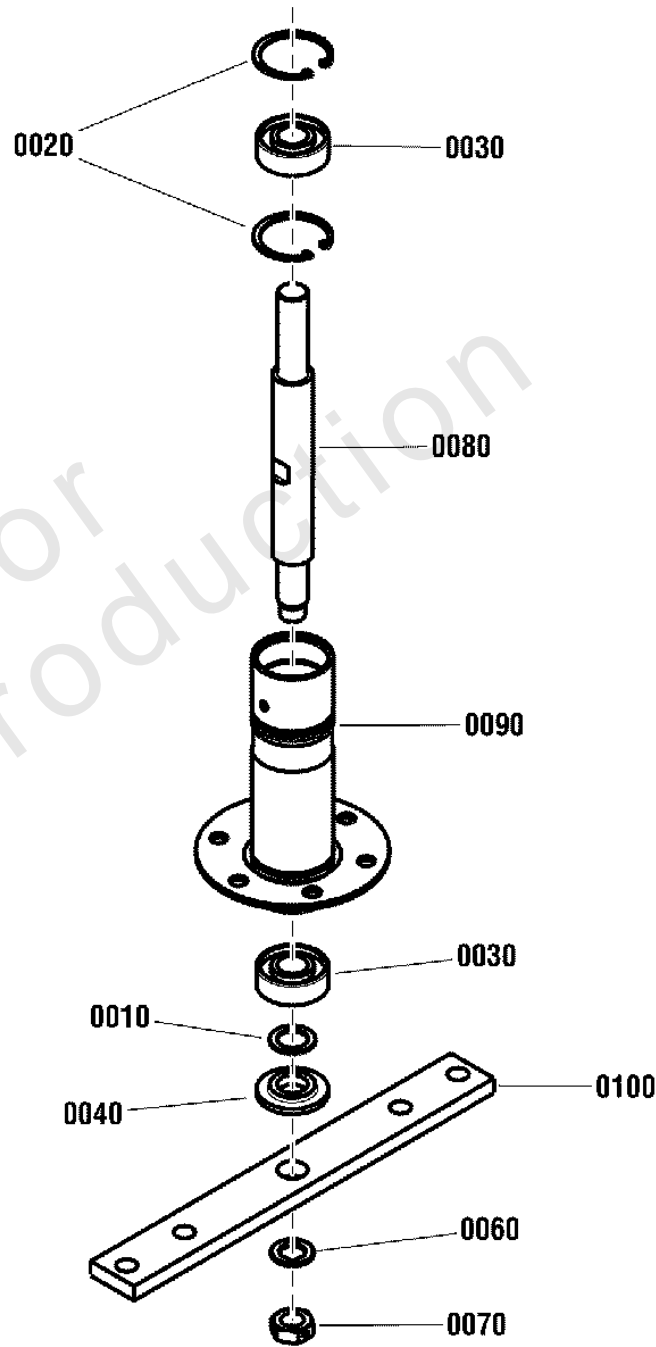
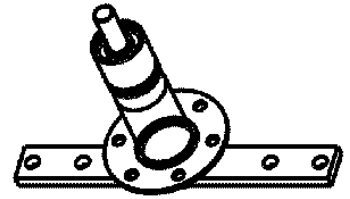
REF NO	PART NO	QTY	DESCRIPTION
0020	7301391BMYP	1	SUPPORT, Seat
0030	1704728SM	2	SPRING, Compression, 19/32 x 2
0050	1709256SM	4	WASHER, Spring, 5/16 x 1 1/4
0100	1751493YP	1	ROD, Seat Pivot, .375 X 13.44 to .109 Hole -Used on early models
0110	703355	1	COTTER PIN, 3/8 -Used on early models
0130	1704724SM	2	COVER, Spring 2" Id X 1-1/2", Black Vinyl
0150	703185	3	BOLT, Round Head, Short Square Neck
0160	703115	5	NUT
0200	7106013YP	1	SPRING, Compression, 4.57" Free Length
0210	5023274SM	1	CAP, Vinyl, 1.375 X 1
0220	703851	2	BOLT, 5/16-18X1.15
0230	7023354YP	1	SWITCH, SEAT
0240	1754214YP	1	SEAT, 11" High, 18.8" Wide (Black)
0250	1731300SM	4	SPACER, 0.32 ID x 1-1/2 OD x 3/10 THK Powdered Metal Yellow
0260	703298	2	WASHER, 5/16
0270	1930595SM	2	SCREW, Hex Cap Flange Whiz Lock, 5/16-18 x 1-1/4, G5
0280	1752056YP	2	KNOB, 5/16-18 x 3/4 Two Prong

# Spindle Assembly Group

Note: Unless noted otherwise, use the standard torque specifications

Mfg. No: 7800932-00

7503076





## Spindle Assembly Group

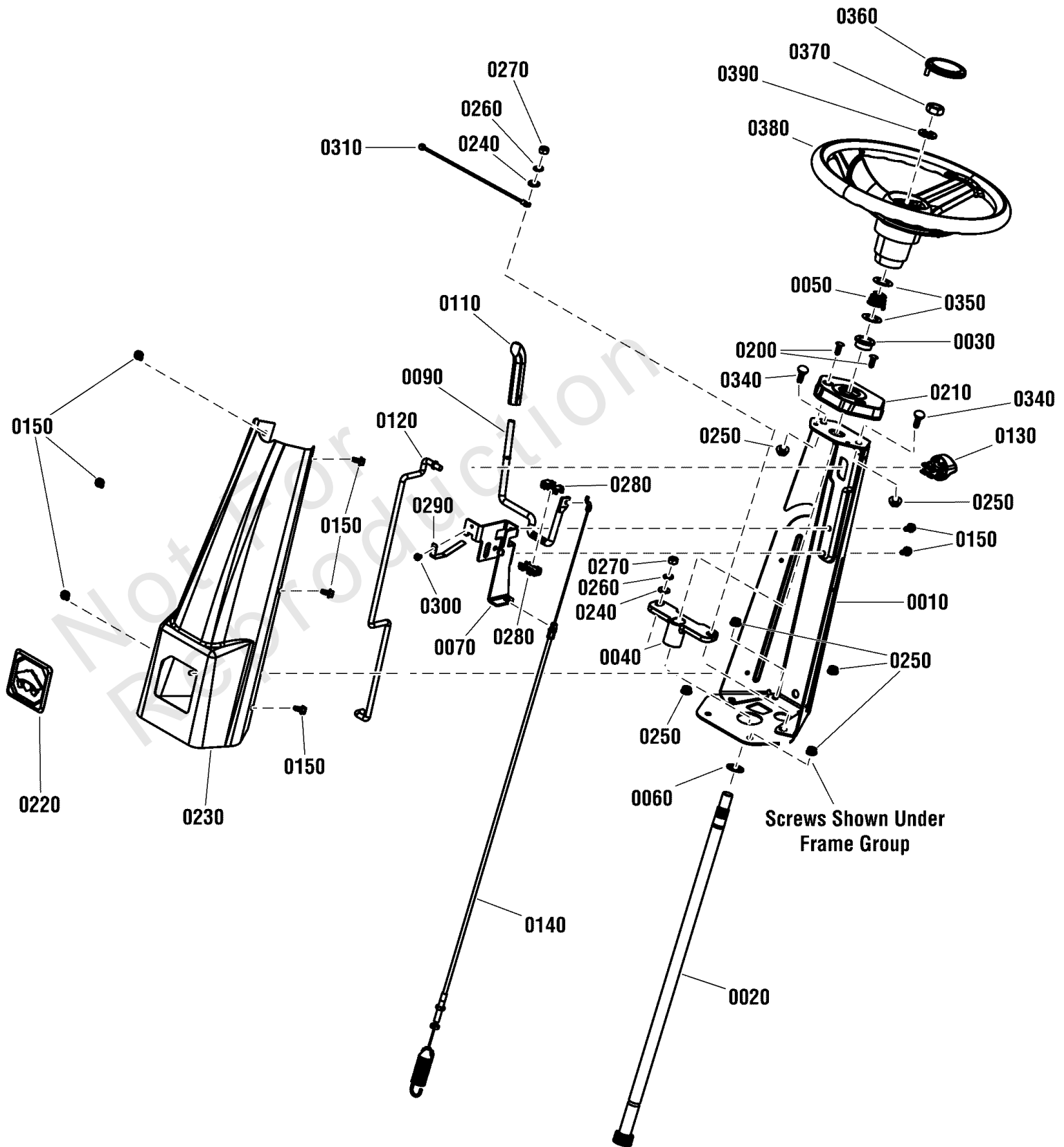
REF NO	PART NO	QTY	DESCRIPTION
0010	7010935SM	1	FW, .77X1.13X.06
0020	7012491SM	2	RING, 1.85, Internal Retaining
0030	7013313SM	2	BEARING, Ball, 1.78 OD, .750 ID, .610 Wide
0040	7014407SM	1	WASHER, Spindle, .75 ID, 1.75 OD, .28 Thick, PM
0060	7044782YP	1	SPACER, Blade Centering (.63 X 1.05 X .094)
0070	7090356YP	1	NUT, 5/8-18 Hex Center Lock Jam, GR5, ZP
0080	7200147YP	1	SHAFT, Spindle, 9.737"
0090	7400327YP	1	WELDMENT, Spindle Housing (7 Tall)
0100	7037751BMYP	1	HOLDER, Adjustable Blade (5 Hole, 12.5")

Not For Reproduction

# Steering Tower Group

Note: Unless noted otherwise, use the standard torque specifications

Mfg. No: 7800932-00



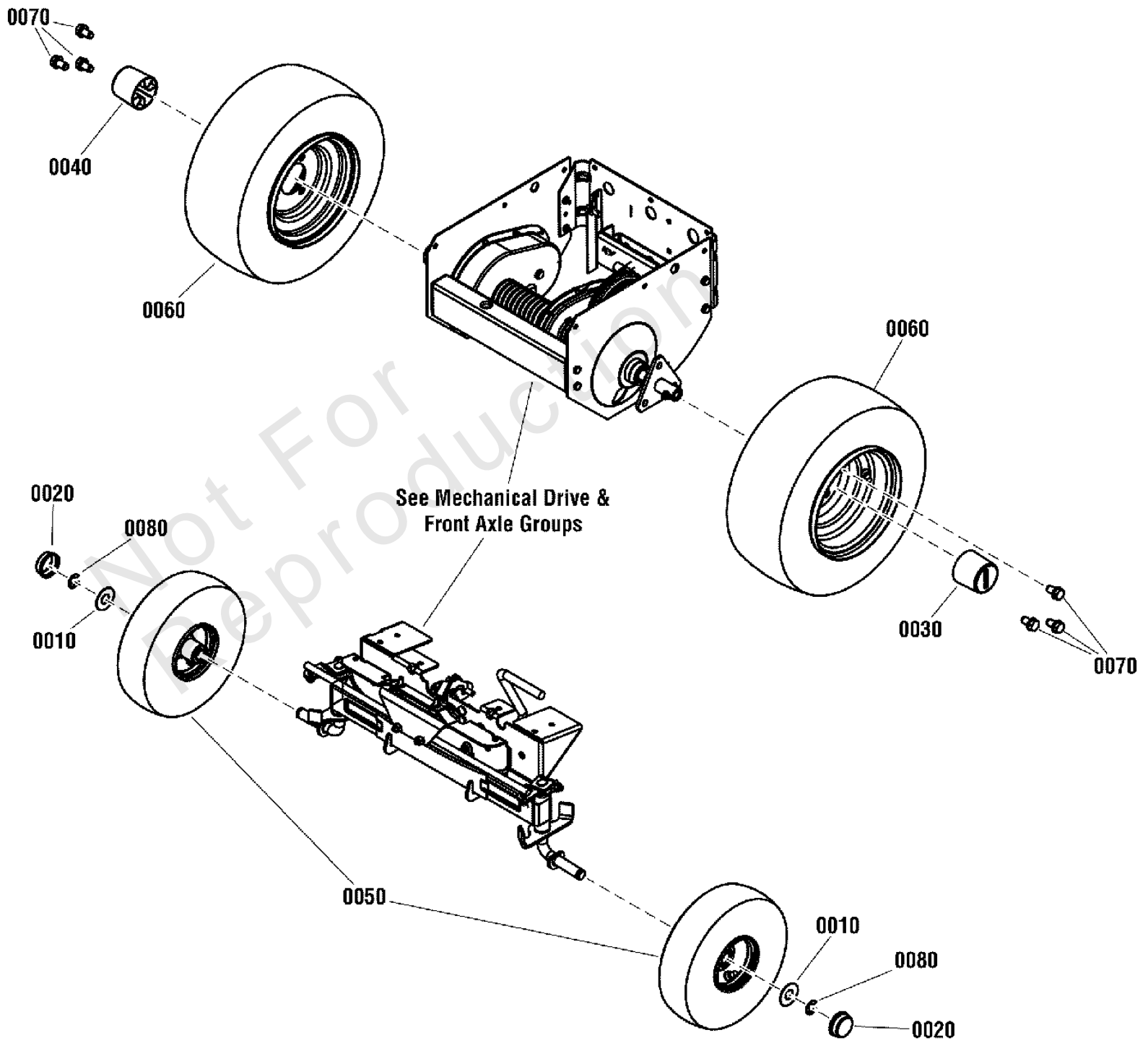
## Steering Tower Group

REF NO	PART NO	QTY	DESCRIPTION
0010	7301293BMYP	1	SUPPORT, Steering Column
0020	7105572YP	1	SHAFT, Steering
0030	1729665SM	1	BUSHING, Steering, 3/4 ID
0040	7105751YP	1	BEARING, Steering Shaft, 3/4 ID
0050	7106341YP	1	SPRING, Conical Compression
0060	703151	1	WSHR
0070	7301375BMYP	1	BRACKET, Blade Engagement Handle
0090	7105731BMYP	1	LEVER, ENGAGE, PTO
0110	7023657YP	1	GRIP, Handle, 3/8
0120	7105654YP	1	ROD, Parking Brake
0130	7105745YP	1	KNOB, Parking Brake
0140	7105566YP	1	CABLE, Blade Engagement, 40.82"
0150	703953	8	SCREW, 1/4-20X5/8
0200	7091272YP	2	FASTENER, 1/4 x 3/4 Ratchet
0210	7105597YP	1	COVER, Steering Tower/Support
0220	7105704YP	1	COVER, Plastic - Turtle, Black
0230	7301260DYP	1	TOWER, Steering, Red
0240	703350	2	WASHER
0250	703409	6	NUT, 5/16-18, GR5
0260	703116	2	LCKWSHR
0270	703465	2	NUT, 5/16-18, GRB, Zinc/Clear
0280	7106027YP	2	BUSHING, PTO Lever, Plastic
0290	7301373YP	1	PADDLE, PTO Lever
0300	704061	1	SCREW,HEX, #10-32X.25
0310	7106051YP	1	WIRE, RER Head Light Ground
0340	703447	2	BOLT, 5/16-18X.625 G5
0350	7031965YP	2	WASHER, 1.25 X .765 X .03, Thrust, ZC/CL
0360	1725024SM	1	CAP, Steering Wheel
0370	1960576SM	1	NUT, Hex Lock, ESNA Light, 5/8-18
0380	7105776YP	1	STEERING WHEEL, 13 DIA, 5.87 Dish, 3 Spoke
0380	706337	1	STEERING WHEEL, 13 DIA, 5.87 Deep Dish, 3 Spoke
0390	703580	1	WASHER, 5/8

# Wheel Group

Note: Unless noted otherwise, use the standard torque specifications

Mfg. No: 7800932-00



## Wheel Group

REF NO	PART NO	QTY	DESCRIPTION
0010	17X195MA	2	WASHER, .765 ID, 1.8 OD, .0598 Thk, Flat ZP
0020	094618MA	2	HUB CAP
0030	7023522YP	1	CAP, Hub, L. H. (.975" ID x 2.25")(Long Axle)
0040	7023895YP	1	CAP, Hub, R. H. (1.35" ID x 2.25")(Short Axle)
0050	7105138YP	2	WHEEL ASSEMBLY, Front, 11X4.00-4, Kenda
----	7011807YP	4	BEARING, Ball, Flanged (3/4 I.D.) -(Not Shown)
----	7012234SM	4	VALVE, Stem & Cap -(Not Shown)
----	703957	2	GREASE FITTING, 1/4-28X31/32" Zinc/Clear -(Not Shown)
0060	7105140YP	2	WHEEL ASSEMBLY, Rear, 16X6.50-8, Kenda
0070	703431	6	BOLT, HEX, 1/2-20X.75
0080	0011X3MA	2	RING, E .750D .050T

Not For Reproduction

# Hardware Identification & Torque Specifications

Torque Specification Chart								
FOR STANDARD METRIC MACHINE HARDWARE (Tolerance ± 20%)								
Property Class	5.6		8.8		10.9		12.9	
	Class 5.6		Class 8.8		Class 10.9		Class 12.9	
Size Of Hardware	in/lbs	Nm.	in/lbs	Nm.	in/lbs	Nm.	in/lbs	Nm.
	ft/lbs		ft/lbs		ft/lbs		ft/lbs	
M3	5.88	.56	13.44	1.28	19.2	1.80	22.92	2.15
M4	13.44	1.28	30.72	2.90	43.44	4.10	52.56	4.95
M5	26.4	2.50	60.96	5.75	5.97	8.10	7.15	9.7
M6	44.64	4.3	7.3	9.9	10.3	14	12.1	16.5
M7	5.2	7.1	12.1	16.5	16.9	23	19.9	27
M8	7.7	10.5	17.7	24	25	34	29	40
M10	15	21	35	48	50	67	59	81
M12	26	36	61	83	86.2	117	103	140
M14	42	58	101	132	136	185	162	220
M16	64	88	147	200	210	285	250	340
M18	89	121	202	275	287	390	346	470
M20	126	171	290	390	405	550	486	660
M22	169	230	390	530	559	745	656	890
M24	217	295	497	375	708	960	840	1140
M27	320	435	733	995	1032	1400	1239	1680
M30	435	590	995	1350	1401	1900	1681	2280
M33	590	800	1349	1830	1902	2580	2278	3090
M36	759	1030	1740	2360	2441	3310	2935	3980
M39	988	1340	2249	3050	3163	4290	3798	5150

Torque Specification Chart						
FOR STANDARD MACHINE HARDWARE (Tolerance ± 20%)						
Hardware Grade	No Marks		SAE Grade 5		SAE Grade 8	
	SAE Grade 2		SAE Grade 5		SAE Grade 8	
Size Of Hardware	in/lbs	Nm.	in/lbs	Nm.	in/lbs	Nm.
	ft/lbs		ft/lbs		ft/lbs	
8-32	19	2.1	30	3.4	41	4.6
8-36	20	2.3	31	3.5	43	4.9
10-24	27	3.1	43	4.9	60	6.8
10-32	31	3.5	49	5.5	68	7.7
1/4-20	66	7.6	8	10.9	12	16.3
1/4-28	76	8.6	10	13.6	14	19.0
5/16-18	11	15.0	17	23.1	25	34.0
5/16-24	12	16.3	19	25.8	29	34.0
3/8-16	20	27.2	30	40.8	45	61.2
3/8-24	23	31.3	35	47.6	50	68.0
7/16-14	30	40.8	50	68.0	70	95.2
7/16-20	35	47.6	55	74.8	80	108.8
1/2-13	50	68.0	75	102.0	110	149.6
1/2-20	55	74.8	90	122.4	120	163.2
9/16-12	65	88.4	110	149.6	150	204.0
9/16-18	75	102.0	120	163.2	170	231.2
5/8-11	90	122.4	150	204.0	220	299.2
5/8-18	100	136	180	244.8	240	326.4
3/4-10	160	217.6	260	353.6	386	525.0
3/4-16	180	244.8	300	408.0	420	571.2
7/8-9	140	190.4	400	544.0	600	816.0
7/8-14	155	210.8	440	598.4	660	897.6
1-8	220	299.2	580	788.8	900	1,244.0
1-12	240	326.4	640	870.4	1,000	1,360.0

The guides and ruler furnished below are designed to help you select the appropriate hardware.



Nut, M8

Thread Diameter (mm)

Inside Diameter (in)      Threads per inch

Nut, 1/2-16



Screw, M8- 1.25 x 25

Thread Diameter (mm)      Distance between threads (mm)      Body Length (mm)

Body Diameter      Threads per inch      Body Length (in)

Screw, 1/2- 16 x 2



## Standard Hardware Sizing

When a washer or nut is identified as 1/2" (M8), this is the *Nominal size*, meaning the *inside diameter* is 1/2 inch (8mm metric thread diameter); if a second number is present it represents the *threads per inch* (distance between threads).

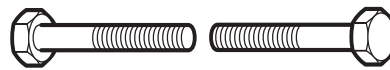
When bolt or capscrew is identified as 1/2 - 16 x 2" (M8 - 1.25 x 50), this means the *Nominal size*, or body diameter is 1/2 inch (8mm metric thread diameter), the second number, 16, represents the *threads per inch*, (*distance between threads*). The final number is the body length of the bolt or screw, 2 inches (50mm).

## NOTES

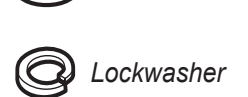
- These torque values are to be used for all hardware excluding: locknuts, self-tapping screws, thread forming screws, sheet metal screws and socket head setscrews.
- Recommended seating torque values for locknuts:
  - for prevailing torque locknuts - use 65% of grade 5 torques.
  - for flange whizlock nuts and screws - use 135% of grade 5 torques.
- Unless otherwise noted on assembly drawings, all torque values must meet this specification.

## Common Hardware Types

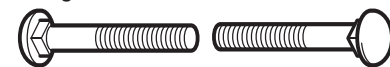
Hex Head Capscrew



Washer



Carriage Bolt



Hex Nut

## Wrench & Fastener Size Guide

1/4" Bolt or Nut Wrench—7/16"	5/16" Bolt or Nut Wrench—1/2"	3/8" Bolt or Nut Wrench—9/16"	7/16" Bolt or Nut Wrench (Bolt)—5/8" Wrench (Nut)—11/16"	1/2" Bolt or Nut Wrench—3/4"
M6 Bolt or Nut Wrench—10mm	M8 Bolt or Nut Wrench—13mm	M10 Bolt or Nut Wrench—17mm	M12 Bolt or Nut Wrench—19mm	M14 Bolt or Nut Wrench—22mm

