



Parts Manual

Mfg. No: 2691348-00
REX300-CE, 33"/84cm Hydro Drive REX

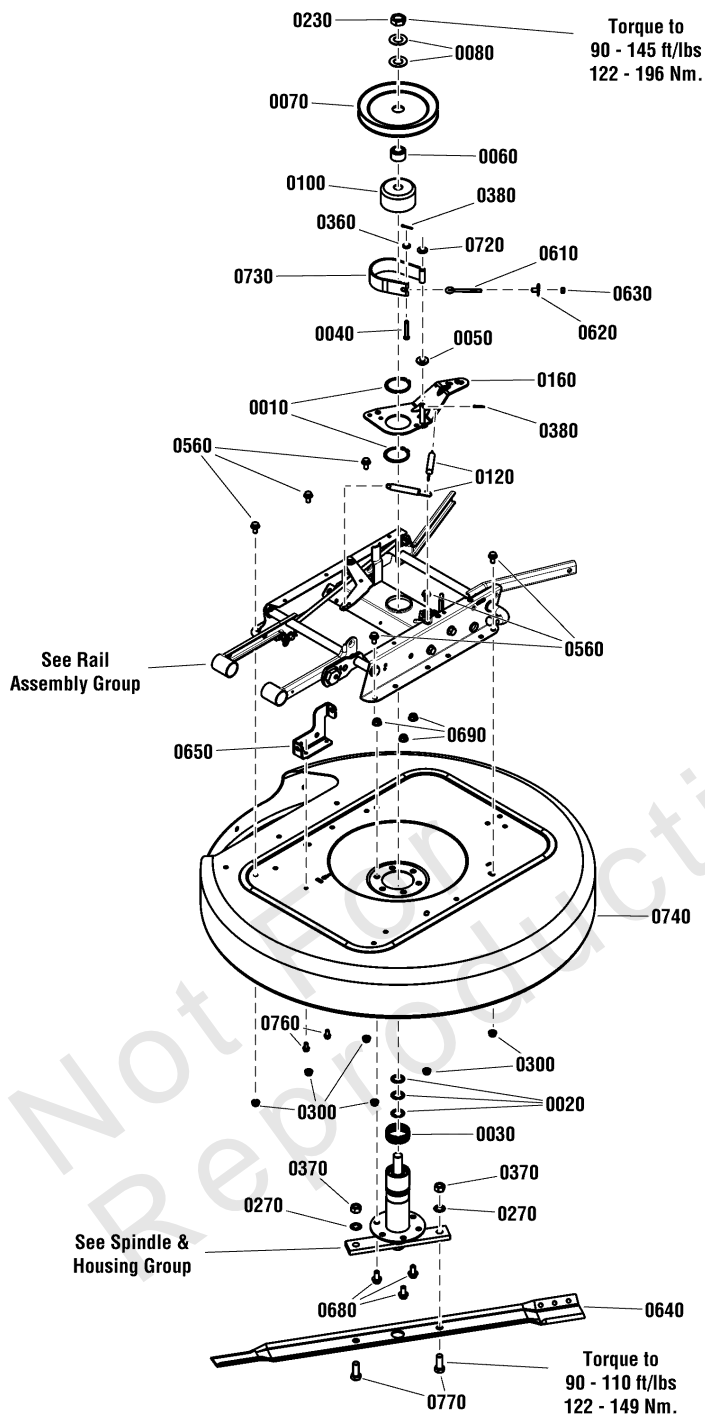
Model Components	Page
33" Mower Assembly - EURO.....	4
33" Mower Group Euro.....	6
Console & Fuel Tank Group.....	8
Decals.....	10
Electrical Group.....	12
Engine Group.....	14
Front Axle Group 13" Wheels.....	16
Guard Group.....	18
Hydro Drive Group.....	20
Lift Group.....	22
Main Frame Group.....	24
Seat Group.....	28
Spindle & Housing Assembly.....	30
Steering Tower Group.....	32
Wheel Group.....	34
Torque Specification Chart.....	36

Not For
Reproduction

33" Mower Assembly - EURO

Note: Unless noted otherwise, use the standard torque specifications

Mfg. No: 2691348-00



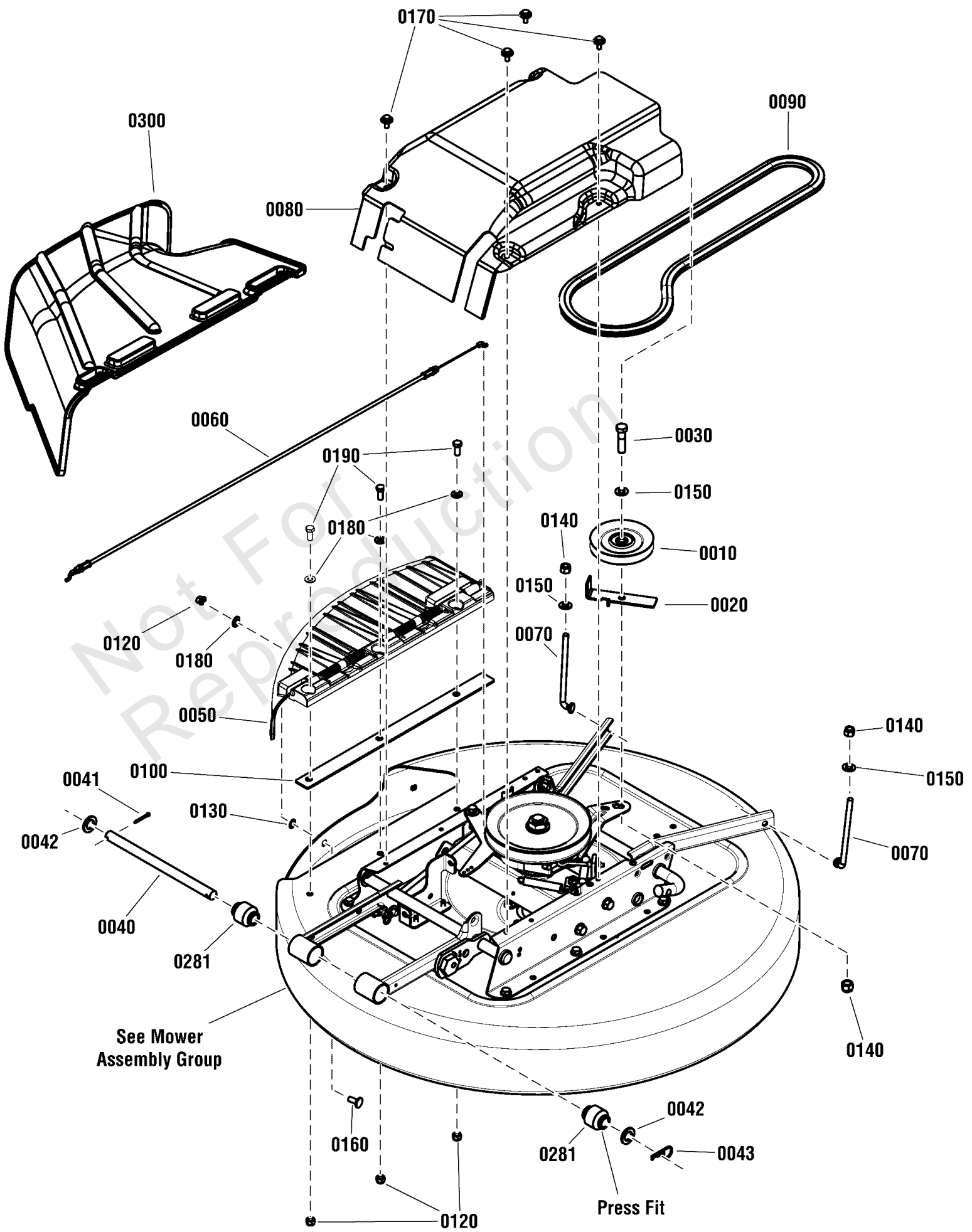
33" Mower Assembly - EURO

REF NO	PART NO	QTY	DESCRIPTION
0010	7010740YP	2	RING, 2 External Retaining
0020	7010935SM	3	WASHER, .77 x 1.13 x .06, Flat
0030	7012670YP	1	RING, 2 ID x 3/4 High, Tolerance
0040	7014304YP	1	PIN, 1/4 x 1-5/8 Clevis
0050	7014314YP	1	SPACER, .31 I.D. x .39 O.D. x 1 Nylon
0060	7015290YP	1	HUB, Pulley, PM
0070	7018781YP	1	PULLEY, Deck Spindle, 6.95 OD
0080	7032027SM	2	WASHER, 49/64x1-1/2x.06, Flat
0100	7035378YP	1	DRUM, Brake Spindle (3" OD, 1.6" Tall)
0120	7036521YP	2	SPRING, Extension, 4 x 1/2 Diameter
0160	706001	1	WELDMENT, Idler Arm, RER
0230	7074467SM	1	NUT, 3/4-16 Hex Jam, GR 8
0270	7090509YP	2	WASHER, 1/2 Internal Tooth Lock, BZ
0300	690272MA	6	NUT, 5/16-18, Serated Lock Flange, GR5, Zinc/Clear
0360	71067MA	1	WASHER, 1/4, Flat, GR5 Zinc/Clear
0370	7091939YP	2	NUT, 1/2-20 Hex, GR 5 ZP
0380	331613MA	2	PIN, 3/32 X 3/4, GR5, Cotter, Zinc/Clear
0560	703823	6	BOLT, 5/16-18 x 5/8 Hex Flange lock, GR 5, YZ
0610	7014302YP	1	EYE-BOLT, 1/4-20 x 2-7/8 ZP
0620	7106120YP	1	T-NUT, 1/4-20 (Bent End)
0630	703127	1	NUT, 1/4-20, G5 Zinc/Clear
0640	7019523BZYP	1	BLADE, 33" (With Air Lift Holes)
0650	7301280BMYP	1	BRACKET, Blade Engagement Cable
0680	703955	3	BOLT, 3/8-16X0.75, Serrated Flange, GR5, Zinc/Clear
0690	703333	3	NUT, 3/8-16, Flanged Lock, GR5, Zinc/Clear
0720	703590	1	WASHER, 3/8
0730	7503086YP	1	ASSEMBLY, Brake Band, RER, 10.12 X 1.25"
0740	7061972YP	1	KIT, 33" Mower Housing, Red (Includes Decals)
0760	B4300GS	2	SCREW, 1/4-20 X .500, Hex HD, Self-Tap, Zinc/Clear
0770	7090491YP	2	SCREW, 1/2-20 x 1-1/4" Hex Head Cap, GR5

33" Mower Group Euro

Note: Unless noted otherwise, use the standard torque specifications

Mfg. No: 2691348-00



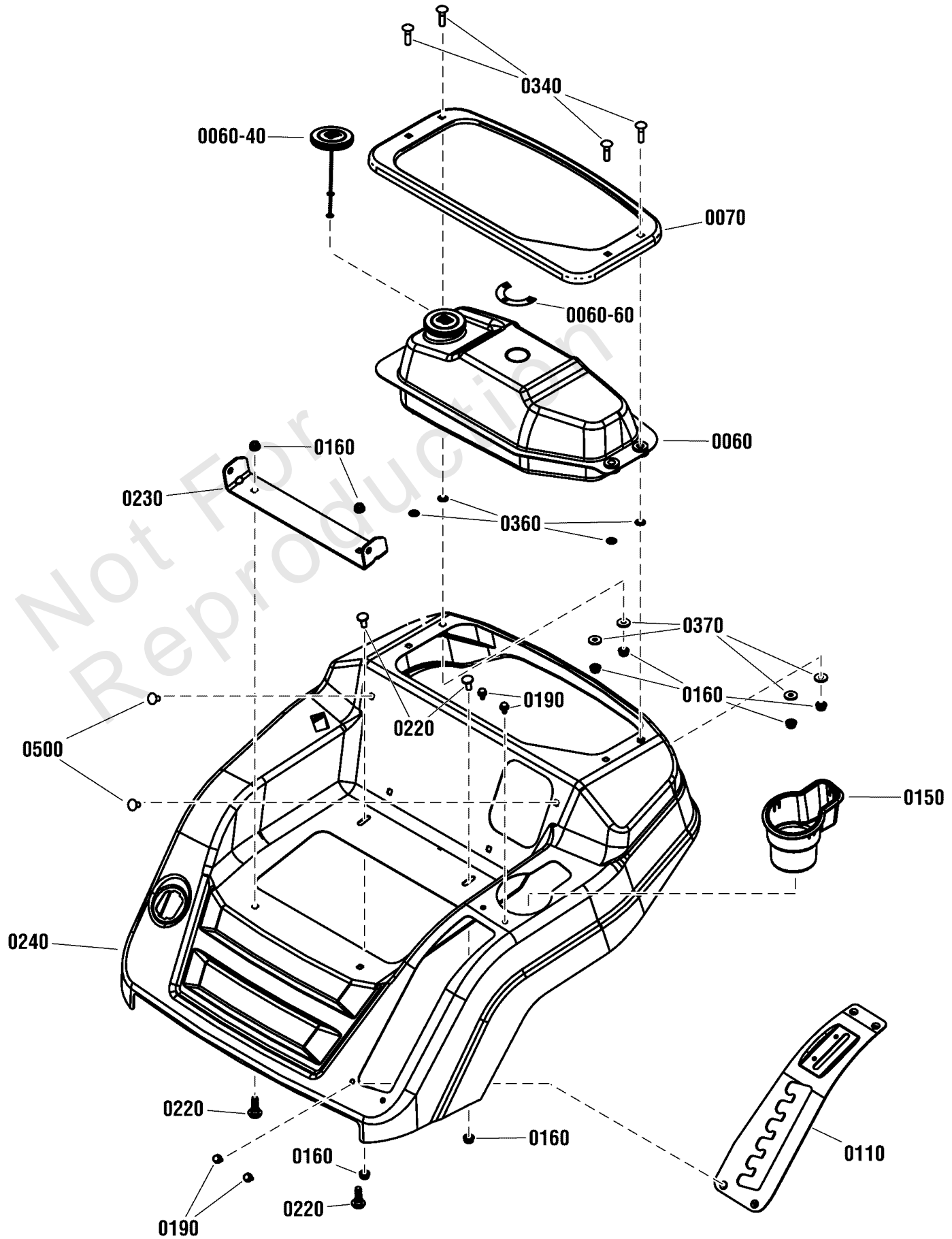
33" Mower Group Euro

REF NO	PART NO	QTY	DESCRIPTION
0010	7029624YP	1	PULLEY, Idler, .375 ID, 4 OD
0020	7032111	1	BRKT, BELT GUIDE, 42
0030	703406	1	SCREW, 3/8-16 X 1.50, Hex HD Cap, GR5, Zinc/Clear
0040	1759845YP	1	ROD, Hitch, .625 OD, 9.18" between .140 Holes
0041	703795	1	PIN, Cotter, 1/8 X 1.0", ZC/CL
0042	703580	2	WASHER, 5/8" (0.66 ID x 1.12 OD x .11 Thk) Zinc/Clear
0043	703796	1	PIN, .091 DIA X 1.875, Hair, Zinc/Clear
0050	7105871YP	1	ASSEMBLY, Mulching Cover, RER, 33"
0050-10	704005	1	NUT, 1/4", Push, Zinc/Clear (Not Shown)
0050-20	7103309YP	2	SPRING, Torsion, Rear Door (Not Shown)
0050-30	7105346YP	1	HINGE, Chute, RER, 28/33 (Not Shown)
0050-40	7105689YP	1	ROD, Chute .25 OD, 17.62 Long (Not Shown)
0050-50	7105870YP	1	COVER, Mulching, RER, 33" (Not Shown)
0060	7105982YP	1	CABLE, Brake, 37.4 OPC
0070	706133	2	ROD, Rear Deck Lift, 5.5 Long, 3/8-16 Threads
0080	706172	1	COVER, Deck Spindle, 28"/33", RER
0090	770082	1	BELT, 33" Deck, Hydro Drive (HAA 52.40" EL, .41" Thk)
0100	7301363BMYP	1	PLATE, 33" Deck Hinge Support
0120	703115	4	NUT, 5/16-18, Flange Nylock, GR F
0130	703297	1	RETAINER, 5/16 X .625, Push Nut, GR 5, Zinc/Clear
0140	703117	3	NUT, 3/8-16, Nylock, GR5, Zinc/Clear
0150	703590	3	WASHER, 3/8
0160	703185	1	BOLT, 5/16-18X3/4 GR5, Carriage, YZ
0170	703054	4	SCREW, 1/4-20 x 5/8, Hex Washer Head, Thread Roll, Zinc/Clear
0180	703350	4	WASHER, 5/16, Flat SAE, Zinc/Clear
0190	703408	3	SCREW, 5/16-18 x 7/8 Hex Head Cap, GR 5, Zinc/Clear
0281	1759822YP	2	ISOLATOR, Radial
0300	7105326YP	1	CHUTE, Side Discharge, 28"/33"

Console & Fuel Tank Group

Note: Unless noted otherwise, use the standard torque specifications

Mfg. No: 2691348-00



Console & Fuel Tank Group

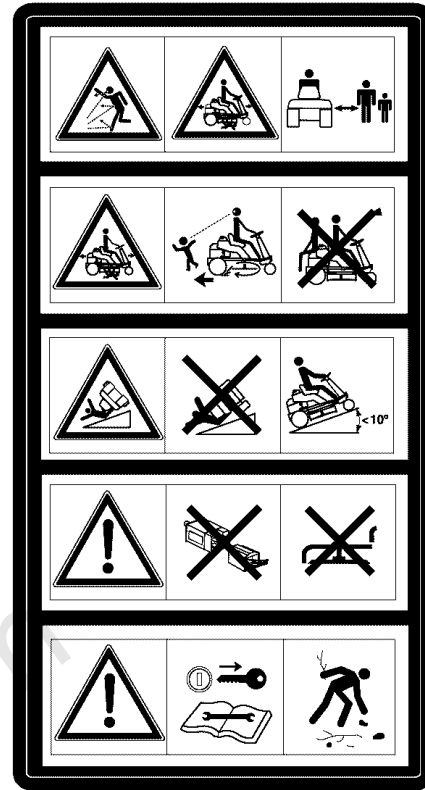
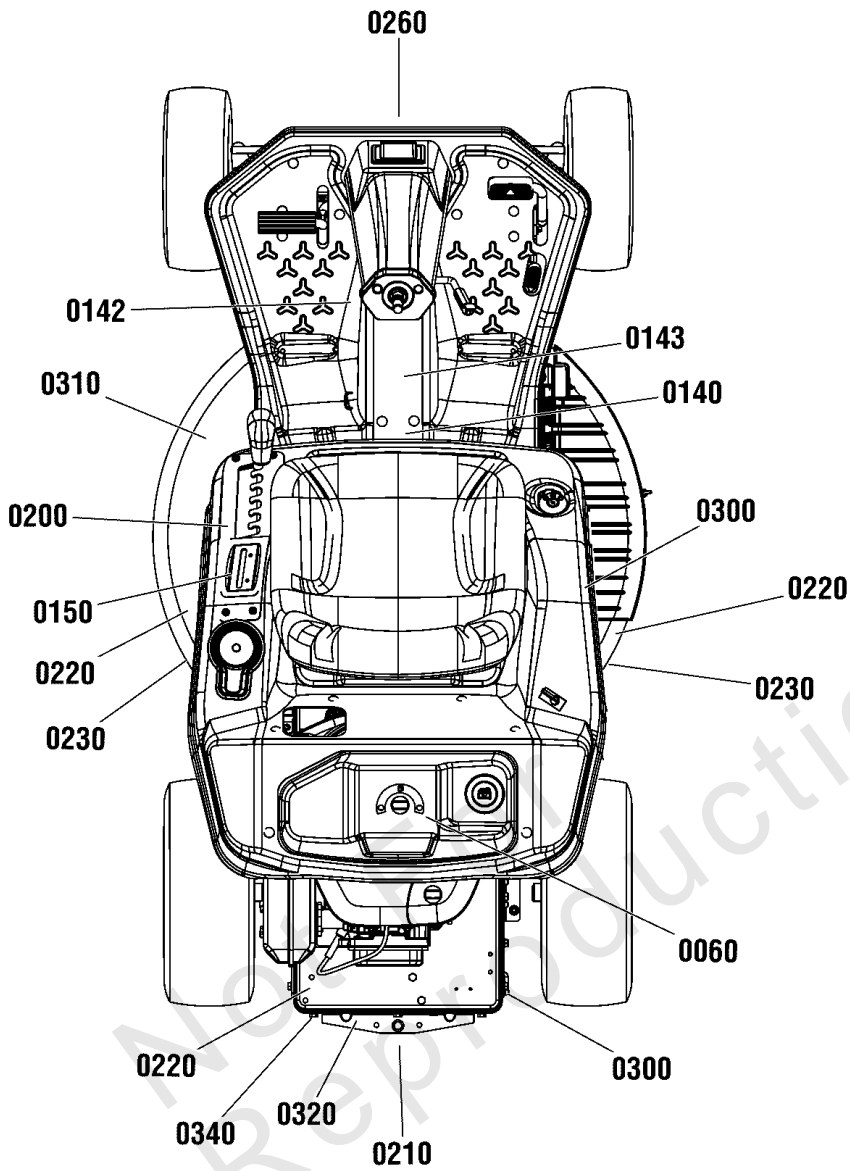
REF NO	PART NO	QTY	DESCRIPTION
0060	7106250YP	1	ASSEMBLY, Fuel Tank w/guage (Includes Decal)
0060-40	1751942YP	1	CAP FUEL, Vented
0060-60	706328	1	DECAL, Fuel Gauge, RER
0070	1758785YP	1	TANK, Trim
0110	7301262BMYP	1	PLATE, HOC Detent, Black
0150	7105766YP	1	CUP HOLDER
0160	703409	8	NUT, 5/16-18, Serrated Lock Flange, GR5
0190	703953	4	SCREW, 1/4-20 X 5/8, Torx Pan Head Self-Tapping, Zinc/Clear
0220	703185	4	BOLT, 5/16-18X3/4 GR5, Carriage, YZ
0230	706334	1	BRACKET, Seat Pivot, 12.41" W, 9.5" W .344" Sq Holes, Black
0240	7301427DYP	1	CONSOLE, Seat/Hydro Control, Red
0340	703446	4	BOLT, 5/16-18 X 1.25, Carriage, GR5, Zinc/Clear
0360	703297	4	RETAINER, 5/16 X .625, Push Nut, GR 5, Zinc/Clear
0370	703298	4	WASHER, 5/16 (.34 ID X 1 OD X .13 THK) GR5, Zinc/Clear
0500	1705115SM	2	PLUG, Hole (for .344 Square Hole)

Not For
Reproduction

Decals

Note: Unless noted otherwise, use the standard torque specifications

Mfg. No: 2691348-00

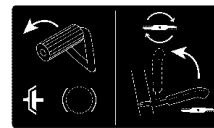


0150

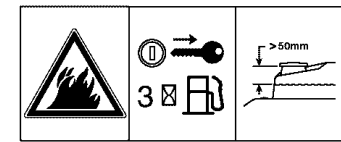


0200

0143



0142



0141



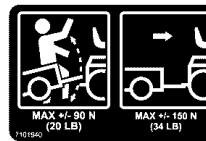
0330



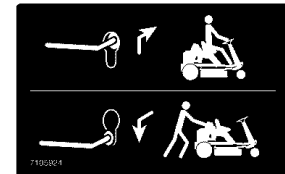
0340



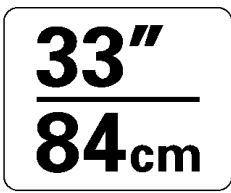
0320



0210



0300



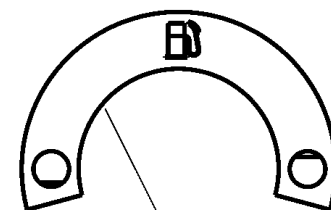
0310



0220



0140



0060



0260



0230

Decals

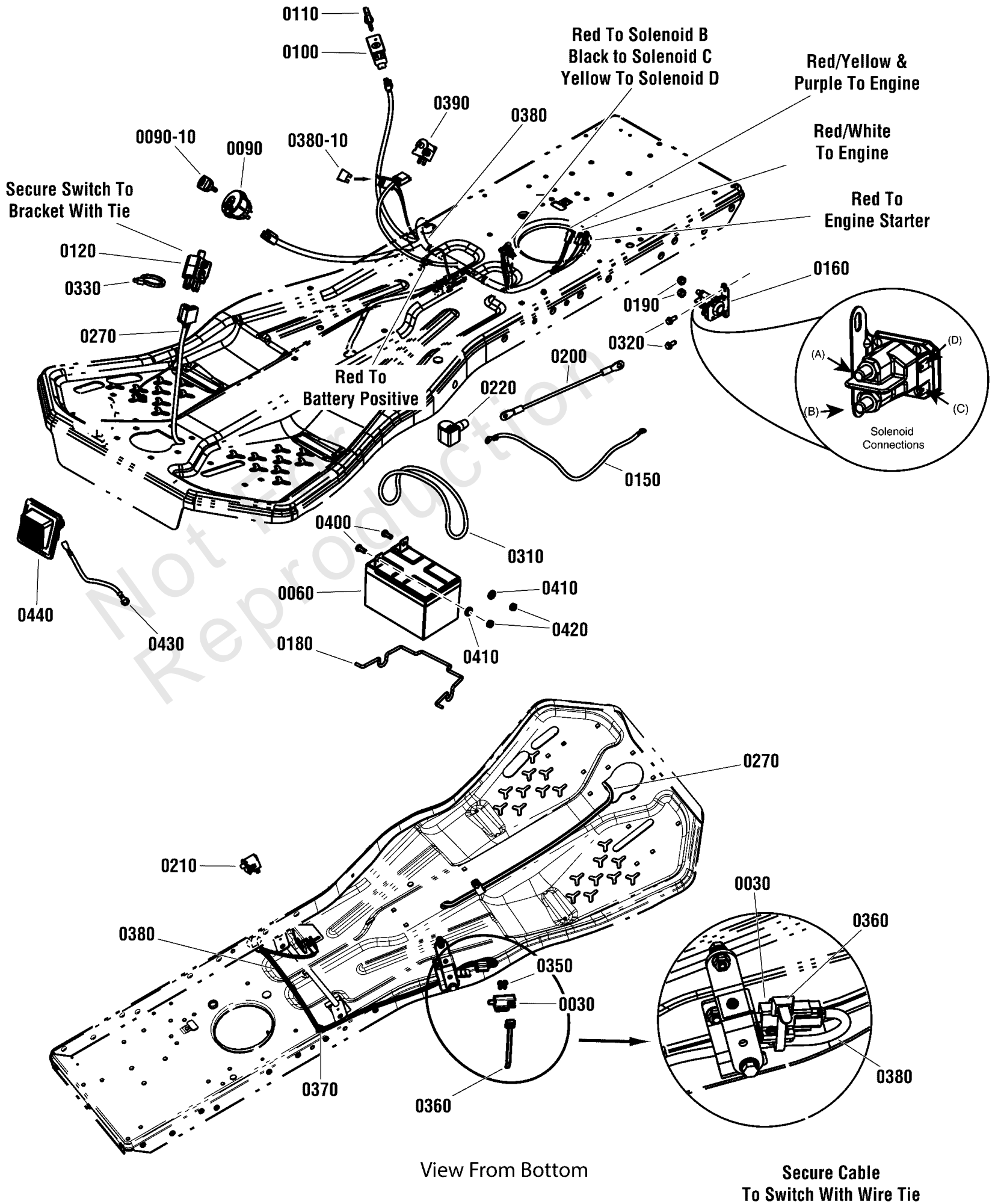
REF NO	PART NO	QTY	DESCRIPTION
0060	706328	1	DECAL, Fuel Gauge, RER
0140	1759990YP	1	LABEL, Warning, Read Manual, CE
0141	1759991YP	1	LABEL, Warning, Fuel, CE
0142	1759992YP	1	LABEL, PTO & Brake, CE
0143	1759993YP	1	LABEL, Warning, Tunnel, CE
0150	7105770YP	1	DECAL, Engine Speed, RER
0200	7105775YP	1	DECAL, HOC
0210	7101940YP	1	DECAL, Weight Limitation
0220	706111	2	DECAL, Discharge Safety (Symbols, 4.415" X 2.346")
0230	1755403YP	2	DECAL, Snapper Logo, 1.8" x 7.23"
0260	1739983YP	1	DECAL, Snapper, 2.13" x 8.5"
0300	7105924YP	1	DECAL, Hydro RER Roll Release
0310	1755713YP	1	DECAL, Mower Width 33" / 84CM
0320	706112	2	LABEL, Solely For Export - Exempt US Emissions
0330	7106358YP	1	DECAL, SNP REX300
0340	709953	2	DECAL, EAC Compliance

Not For
Reproduction

Electrical Group

Note: Unless noted otherwise, use the standard torque specifications

Mfg. No: 2691348-00



Electrical Group

REF NO	PART NO	QTY	DESCRIPTION
0030	7023355YP	1	SWITCH, DPDT NO/NC
0060	7600188YP	1	BATTERY, 12V 20HR: 190CCA, Sealed (3.9" W, 5.9" L, 4 to 4.7" H)
0090	7106169YP	1	SWITCH, Ignition, 3 Position (Delta)(Without Key)
0090-10	7106172YP	1	KEY, Ignition Switch - Delta, Blister Pack of 2, CE/CAN
0100	1726556SM	1	SWITCH, Reverse Mow Option Module (Without Key)
0110	1726557SM	1	KEY, RMO Module (Yellow)
0120	1751449YP	1	SWITCH, Plunger, Snap In (NO/NC/NC)
0150	7100636SM	1	CABLE, Battery, 8 Gauge, Black, 20, 1/4 & 5/16 Terminals
0160	1755381YP	1	SOLENOID, 12V, L-Bracket, 2-Spade
0180	7105788YP	1	BRACE, Battery
0190	2860750SM	2	NUT, 5/16-24 Hex Lock, Keps, YZ
0200	1752685YP	1	CABLE, Battery Positive, Red (#8 x 10" Long, 1/4" & 5/16" Ring Terminals)
0210	1732004SM	1	SWITCH, Push Button, (NO, Black)
0220	7105082YP	1	BOOT, Insulator
0270	7105697YP	1	HARNESS, Blade Engage, 41"
0310	1665872SM	1	STRAP, Rubber Battery, .19 SQ, 7.88 OD, Black
0320	703054	2	SCREW, 1/4-20 x 5/8, Hex Washer Head, Thread Roll, Zinc/Clear
0330	703586	1	TIE, 7, Self Locking
0350	704060	2	SCREW, 10-24 x 1/2" Hex Washer Self-Tap, Torx, ZC/CL
0360	7024641YP	1	WIRE TIE, 5.5" L
0370	1730268SM	1	CLIP, Hose, .50" Dia. Push In, Black Plastic
0380	7106211YP	1	WIRE HARNESS, Main, 15.5HP/17.5HP
0380-10	7023653YP	1	FUSE, 20 Amp
0390	7023354YP	1	SWITCH, Seat, Push Button (NC - Gray)
0400	703338	2	SCREW, Hex Head Cap, 1/4-20 X 0.625, GR5, Zinc/Clear
0410	703332	2	WASHER, 1/4, Flat, GR5
0420	703954	2	NUT, 1/4-20, Center Lock, GR 5, Zinc/Clear
0430	7106051YP	1	WIRE, RER Head Light Ground
0440	7105923YP	1	ASSEMBLY, Head Light (includes Lamp, 12V, 25-30 Lumen LED, 1156 Socket, Type T25-BA15S)
0440-10	1736180YP	1	SOCKET, Single / Twin Light (Includes Gasket)(Not Shown)
0440-20	1755317YP	1	* LAMP, 12VAC 25-30 Lumen LED ((1156 Socket, Type T25-BA15S)(Not Shown)

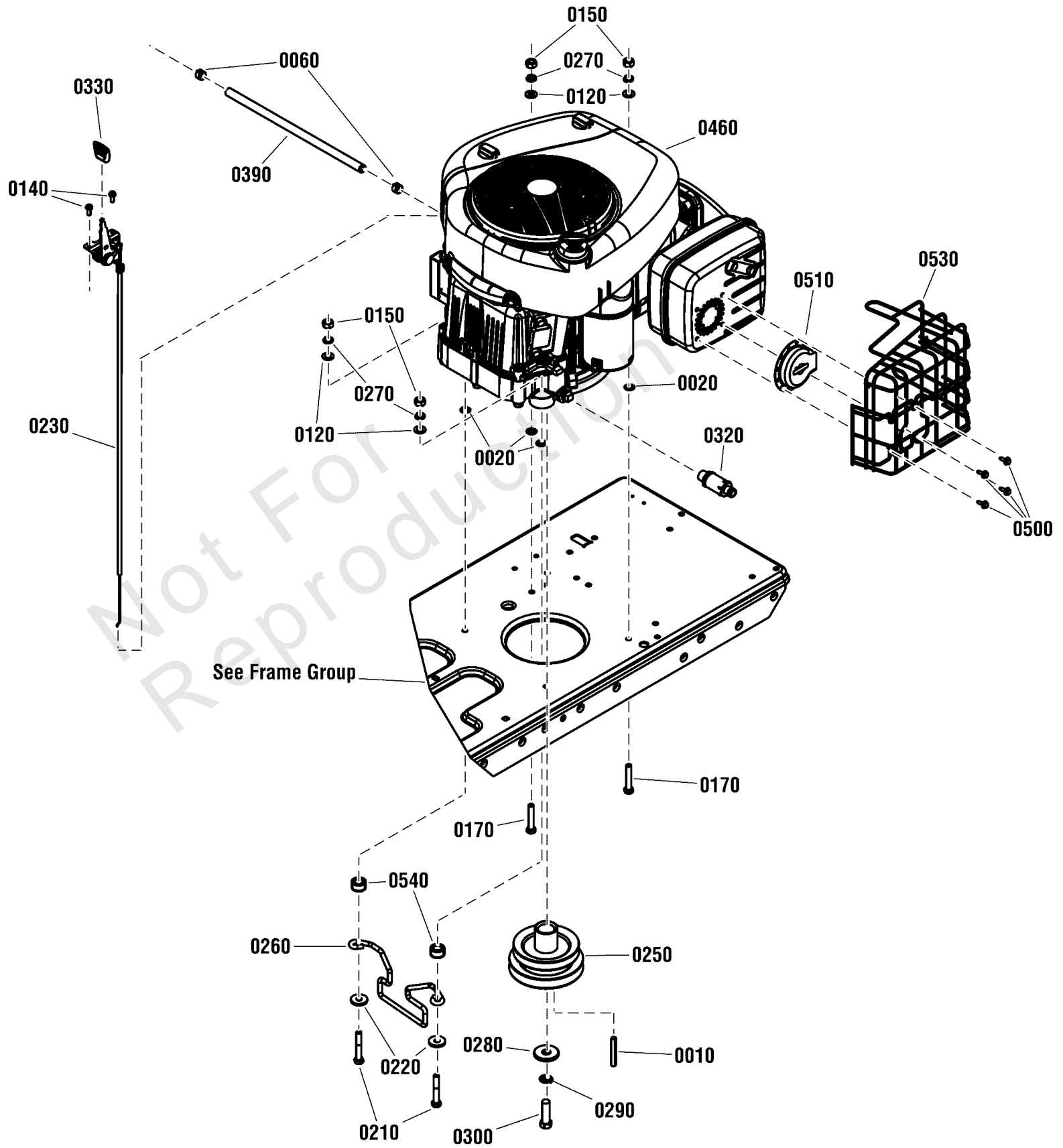
Footnotes:

Note* See your local hardware store for replacement bulbs.

Engine Group

Note: Unless noted otherwise, use the standard torque specifications

Mfg. No: 2691348-00



Engine Group

REF NO	PART NO	QTY	DESCRIPTION
0010	703890	1	KEY, 1/4 Square x 2 Long
0020	703297	4	RETAINER, 5/16 X .625, Push Nut, GR 5, Zinc/Clear
0060	791850	2	CLAMP, Hose
0120	703350	4	WASHER, 5/16, Flat SAE, Zinc/Clear
0140	704060	2	SCREW, 10-24 x 1/2" Hex Washer Self-Tap, Torx, ZC/CL
0150	703331	4	NUT, 5/16-24, Hex, GR5, Zinc/Clear
0170	704228	2	SCREW, 5/16-18 x 1-3/4 Hex Head Cap, GR 5 YZ
0210	704332	2	SCREW, 5/16-18X2-1/4, Hex Head Washer, BK/ZC
0220	703298	2	WASHER, 5/16 (.34 ID X 1 OD X .13 THK) GR5, Zinc/Clear
0230	7105872YP	1	ASSEMBLY, Throttle Control, 27.6" Long, 1.6" Throw
0250	709947	1	PULLEY, Double Stack, 4.0" OD & 4.5" OD
0260	7106336BMYP	1	GUIDE, Belt, 1/4" Wire, 1" X 4" ID, 3.30" Tall, 7.66" Mount
0270	703116	2	WASHER, 5/16 Split Lock, YZ
0280	704053	1	WASHER, .468 ID X 1.5 OD X .19 THK, Special, Zinc/Clear
0290	704007	1	WASHER, 7/16, Split-Lock, Zinc/Clear
0300	720205	1	BOLT, HEX, .43-20X1.50 Z-NYL
0320	7027972SM	1	ASSEMBLY, Oil Drain Valve, 2.775" Long
0330	7106008YP	1	KNOB, Molded Paddle, Black
0390	7200116YP	1	HOSE, Fuel, Low Perm, 1/4" ID X 14"
0460	31R977-0035-B1	1	* ENGINE, Briggs & Stratton 4195 Series Inkek, Single, 31R977-0035-B1
0500	690367	4	* SCREW, #8-18X.53, Tapping Washer HD (B&S Part)
0510	795036	1	DEFLECTOR, Muffler
0530	706336	1	GUARD, Muffler
0540	703933	2	SPACER, .700 OD x .480 ID x .380 L, ZC/CL

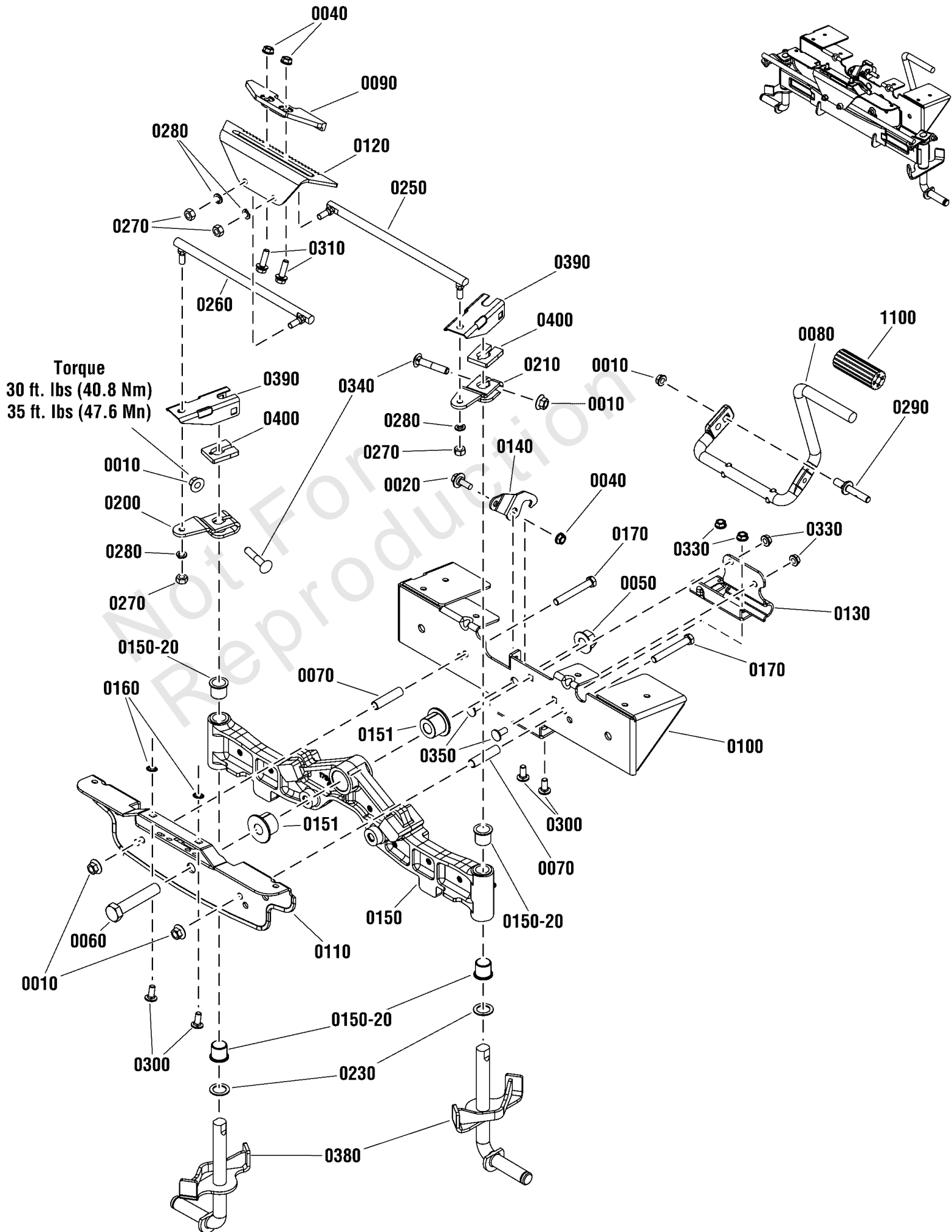
Footnotes:

Note: * Purchase engine parts from engine manufacture dealer.

Front Axle Group 13" Wheels

Note: Unless noted otherwise, use the standard torque specifications

Mfg. No: 2691348-00



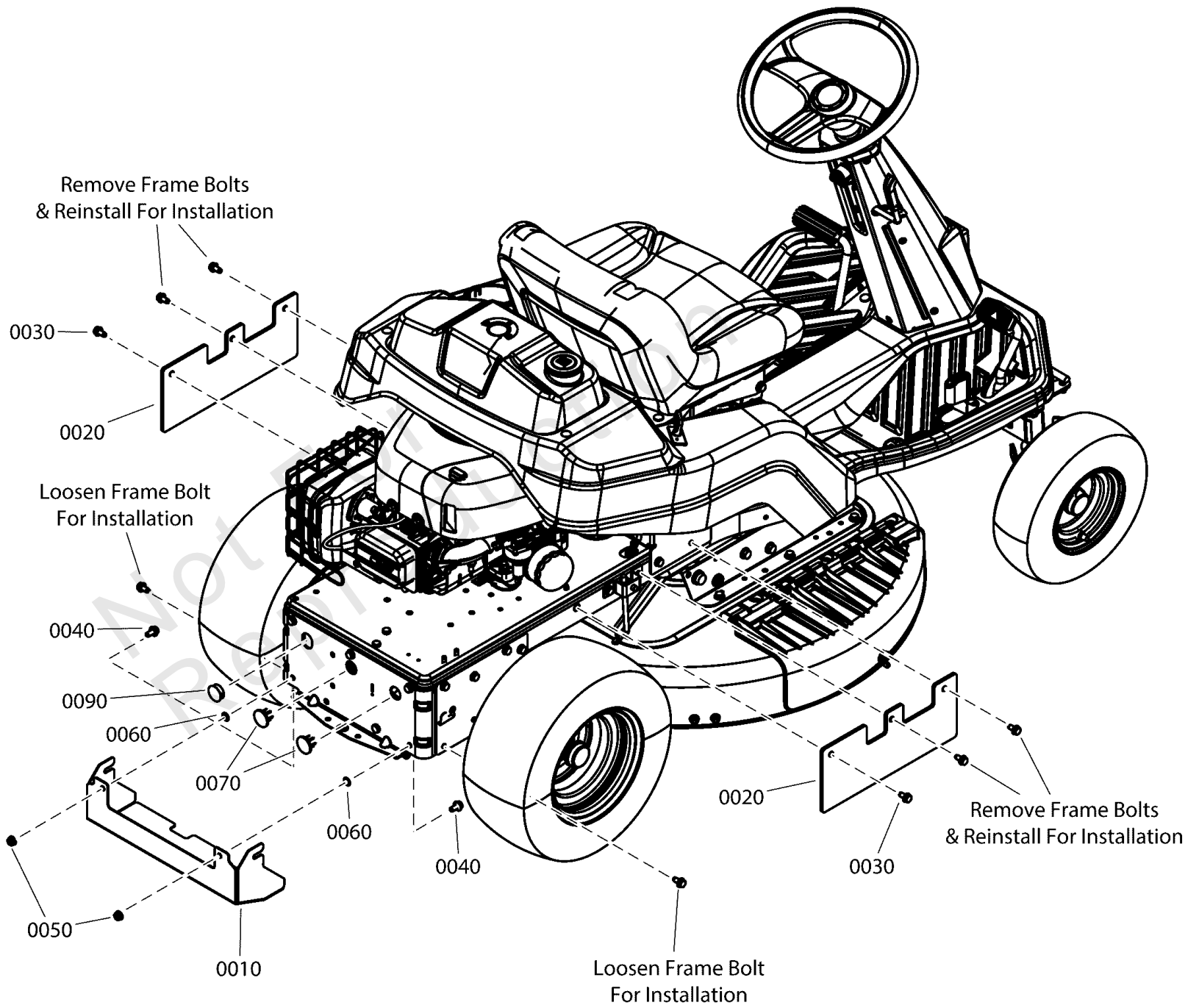
Front Axle Group 13" Wheels

REF NO	PART NO	QTY	DESCRIPTION
0010	703893	8	NUT, 3/8-16 Hex Flange Center Lock, Zinc Plated
0020	1716654SM	1	BOLT, 5/16-18 X .75, .50 Shoulder G5 YEL
0040	704067	3	NUT, 5/16-18, Hex Flanged Center Lock, ZC/CL
0050	704067	1	NUT, 5/16-18 Hex Flange Two-Way Lk Ga
0060	2860744SM	1	SCREW, 5/8-11 x 3-1/4 Hex Head Cap, GR5, Yellow
0070	7026595YP	2	SPACER, .495 OD X .390 ID X 2.038 Long
0080	7105142YP	1	PEDAL, Brake
0090	7105857YP	1	PLATE, Rack Guide
0100	7301259YP	1	BRACKET, Rear Axle
0110	7301432YP	1	BRACKET, Front Axle, Narrow
0120	7301283YP	1	RACK, Steering
0130	7301317YP	1	BRACKET, Brake Pedal
0140	7301351YP	1	PLATE, Park Brake
0150	1756386YP	1	ASSEMBLY, Cast Iron Axle
0150-20	2176440SM	4	BUSHING, .765 ID, .885 OD, .877 LG, Flanged Nylon
0150-30	1704314SM	3	LUBE, Fitting, .250 Drive, .25 SH, Check Ball, Yel (Not Shown)
0151	1730186SM	2	BUSHING, Axle Pivot, .641 ID, 1.25 OD, .884 LG, FL, PM
0160	703297	2	RETAINER, 5/16, GR5 Zinc/Clear
0170	703133	2	SCREW, 3/8-16 X 2.750, Hex Head Cap, GR5, Zinc/Clear
0200	7301337BMYP	1	ARM, RH Steering
0210	7301338BMYP	1	ARM, LH Steering
0230	7010935SM	2	WASHER, .77 x 1.13 x .06, Flat
0250	7105916YP	1	LINK, Drag 10 Lg, 90° X 5/16-24 Ball Joints, LH
0260	7105148YP	1	LINK, Shift, 10 Lg, 90° X 5/16-24 Ball Joints, RH
0270	703331	4	NUT, 5/16-24, Hex, GR5, Zinc/Clear
0280	703116	4	WASHER, 5/16 Split Lock, YZ
0290	703956	1	STUD, 3/8-16 X 2.625, Special Shoulder, GR5
0300	703185	4	BOLT, 5/16-18 x 3/4, Carriage, Short Neck, G5, Zinc/Clear
0310	703410	2	BOLT, 5/16-18 X 1.0 Serrated Flange, GR5, Zinc/Clear
0330	703409	4	NUT, 5/16-18, Serrated Lock Flange, GR5
0340	703879	2	BOLT, Carriage 3/8-16X1-3/4 GR5 YZ
0350	704287	2	SCREW, 5/16-18 x 3/4 Hex Head Cap, GR 5, YZ
0380	1760142YP	2	WELDMENT, RER Hydro Spindle, 13"
0390	7301438YP	2	BRACKET, Steering Arm Support
0400	7301440YP	2	WASHER, ARM, STEERING
1100	1727261SM	1	PEDAL, Brake Rubber

Guard Group

Note: Unless noted otherwise, use the standard torque specifications

Mfg. No: 2691348-00



Guard Group

REF NO	PART NO	QTY	DESCRIPTION
0010	706115	1	COVER, Bottom
0020	706116	2	GUARD, Frame, L.H.
0030	703949	1	SCREW, Washer, 5/16-18 x 5/8
0040	703823	2	BOLT, 5/16-18 x 5/8
0050	703409	2	NUT, 5/16-18, Serrated Lock Flange, GR5
0060	703297	2	RETAINER, 5/16
0070	7024998YP	2	PLUG, 1" Hole
0090	706118	1	PLUG, 1" Hole

Not For
Reproduction

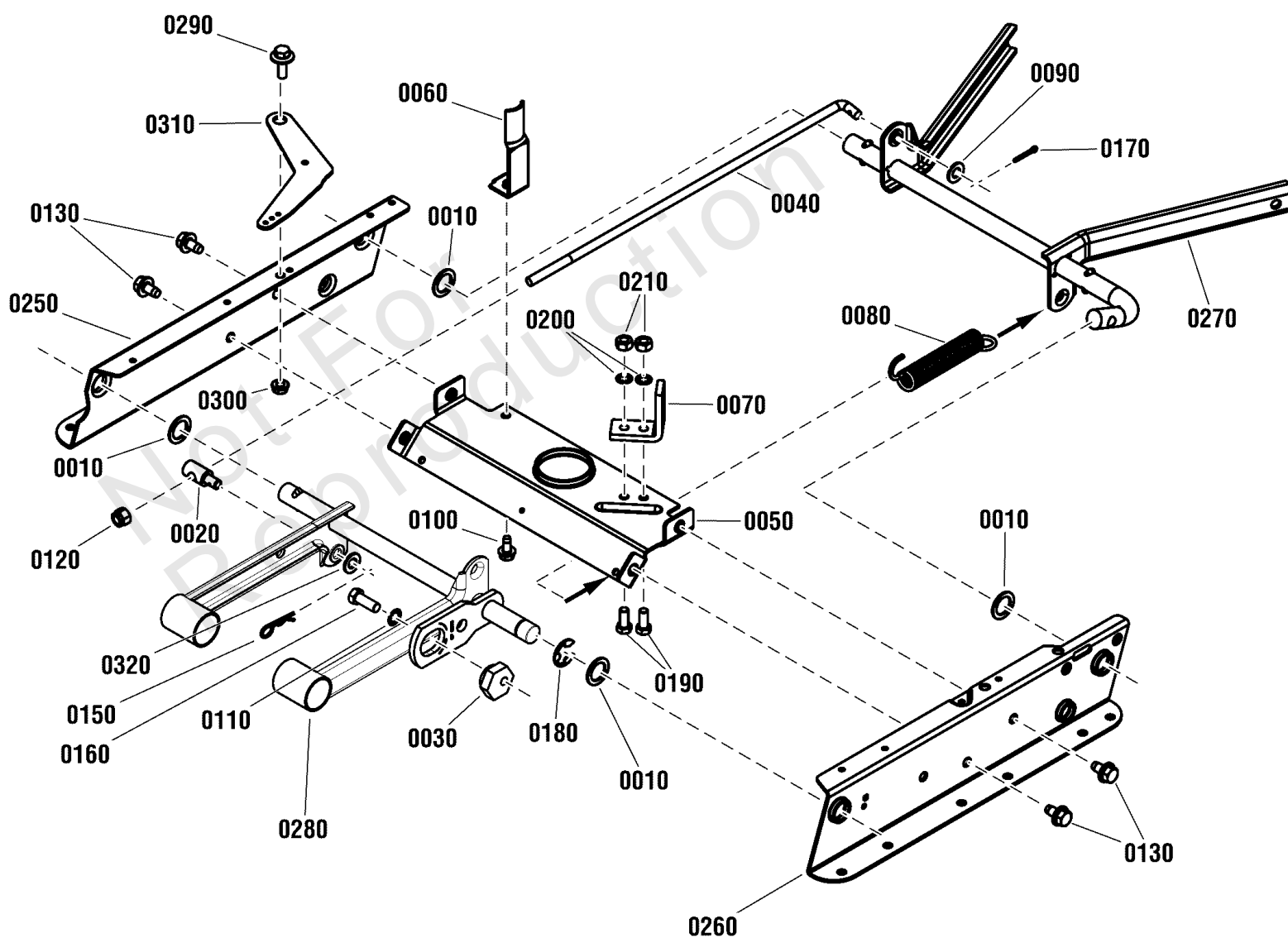
Hydro Drive Group

REF NO	PART NO	QTY	DESCRIPTION
0010	1727259SM	1	PAD, Reverse Foot Pedal, Black Rubber
0020	1721675SM	1	PAD, Forward Foot Pedal, Black Rubber
0030	1960586SM	4	SCREW, 5/16-18 x 2-1/2, Hex Flange Whiz Lock, Black
0040	7105754BMYP	1	PEDAL, FWD/REV, RER Hydro
0050	7301357BMYP	1	BRACKET, FWD/REV Pivot
0060	7301359BMYP	1	BRACKET, Reverse Pedal
0080	703333	1	NUT, 3/8-16, Flanged Lock, GR5, Zinc/Clear
0090	703183	1	WASHER, .922 X .065 X .065, Flat, Zinc/Clear
0100	704206	1	BOLT, 3/8-16 X .925 DIA, Shoulder, GR2, Zinc/Clear
0130	703867	1	SCREW, 5/16-18 X 2.0, Hex Head Cap, GR 5, Zinc/Clear
0300	703185	2	BOLT, 5/16-18 x 3/4, Carriage, Short Neck, G5, Zinc/Clear
0320	703590	2	WASHER, 3/8
0350	704061	1	SCREW, 10-32 x 1/4 Hex Washer Self-Tap, BZ
0360	703407	1	SCREW, 3/8-16 X 1.0, Hex Head Cap, GR5, Zinc/Clear
0370	1722460SM	2	HAIRPIN, Quick, .080 Wire, 1.19LG, Zinc/Clear
0390	009X67MA	1	BOLT, 5/16-18, .499 OD .246 LG Shoulder
0410	885076YP	1	ADJUSTING NUT, 7/16-14, .313 X .32 Shoulder, .156 Pin Hole, Zinc/Clear
0430	1935048SM	4	NUT, 5/16-18 Hex Flange Two-Way Lk Ga
0440	1960339SM	1	NUT, 3/8-16, Hex Flanged Center Lock, Black
0450	7105648YP	1	ROD, Roll Release, Hydro, RER
0460	7105664YP	1	ROD, Drive
0470	7106342YP	1	TRANSMISSION, T2 Hydro (Hydro-Gear T2-BDBE-4X3C-15X1)
0480	7105753YP	1	ROD, Drive, For/Rev, 30.91 Long
0500	7301335BMYP	1	BRACKET, Brake Lever
0510	7301354YP	1	BRACKET, Switch Actuator
0540	7400331BMYP	1	WELDMENT, For/Rev Cross Over
0570	7301310BMYP	1	BRACKET, Hydro Torque Strap, RER
0580	703409	4	NUT, 5/16-18, Serrated Lock Flange, GR5
0600	703183	2	WASHER, .922 X .065 X .065, Flat, Zinc/Clear
0610	7091594SM	3	COTTER PIN, Self Locking, For 1/2 Dia. Pin w/1/16 Hole, YZ

Lift Group

Note: Unless noted otherwise, use the standard torque specifications

Mfg. No: 2691348-00



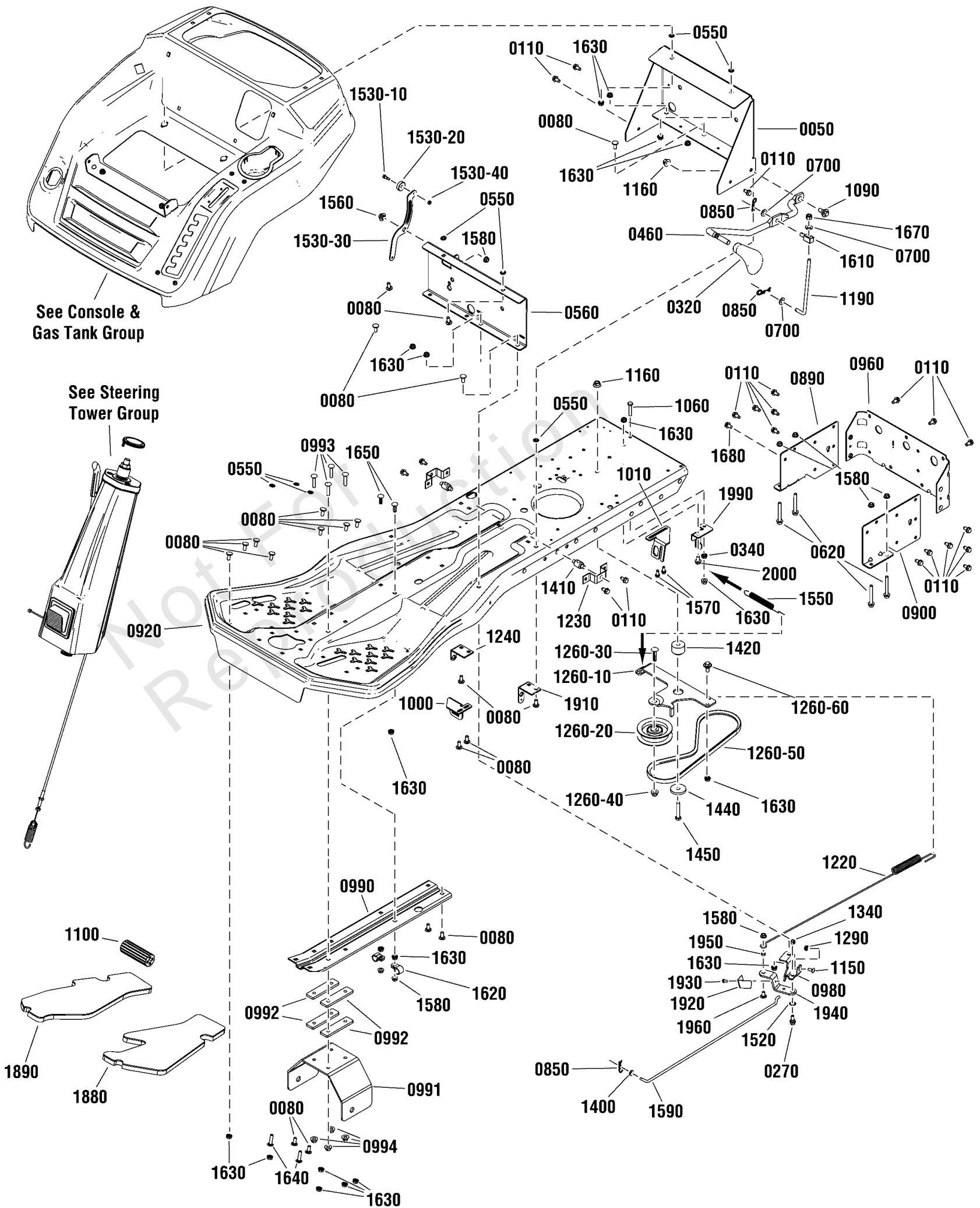
Lift Group

REF NO	PART NO	QTY	DESCRIPTION
0010	7010935SM	4	WASHER, .77 x 1.13 x .06, Flat
0020	7011231SM	1	SWIVEL, 3/8 w/thru hole, Special
0030	7015447YP	1	ECCENTRIC, Leveling
0040	7016122YP	1	ROD, Leveling (3/4-24 thread)
0050	7031838YP	1	BRACE, Top Rail
0060	7031855YP	1	GUIDE, Belt
0070	706321	1	ANCHOR
0080	7046163YP	1	SPRING, Assist
0090	703590	1	WASHER, 3/8
0100	703949	1	SCREW, 5/16-18 x 5/8 Hex Washer Self-Tap, BP
0110	703930	1	WASHER, 3/8 Internal Tooth Lock, BZ
0120	703901	1	NUT, 3/8-24 Hex Nyloc ZP
0130	7091198SM	4	SCREW, 3/8-16 x 5/8 Hex Washer Self-Tap, BP
0150	703300	1	PIN, Hair, 3/32 x 1-5/8, GR5, Zinc/Clear
0160	001X20MA	1	CAPSCREW, 3/8-24 x 1, Hex Head, Zinc
0170	703958	1	PIN, 1/8 X 0.75, Cotter, Zinc/Clear
0180	0011X3MA	1	E-RING, .750D x .050T
0190	703336	2	SCREW, 5/16-24 x 3/4 Hex Head Cap, GR 5
0200	703587	2	WASHER, 5/16, Internal Lock, Zinc/Clear
0210	703331	2	NUT, 5/16-24, Hex, GR5, Zinc/Clear
0250	7301328YP	1	RAIL, Deck Lift RH
0260	7301329YP	1	RAIL, Deck Lift LH
0270	7400324YP	1	WELDMENT, Rear Lift Arm, RER-RE
0280	1759615YP	1	WELDMENT, Front Lift Arm, Adjustable
0290	1716654SM	1	BOLT, 5/16-18 X 0.75, .50 Shoulder, G5 YZ
0300	704067	1	NUT, 5/16-18 Hex Flange Two-Way Lk Ga
0310	7301366YP	1	PLATE, Brake OPC
0320	1960103SM	1	WASHER, 3/8 Flat, Black

Main Frame Group

Note: Unless noted otherwise, use the standard torque specifications

Mfg. No: 2691348-00



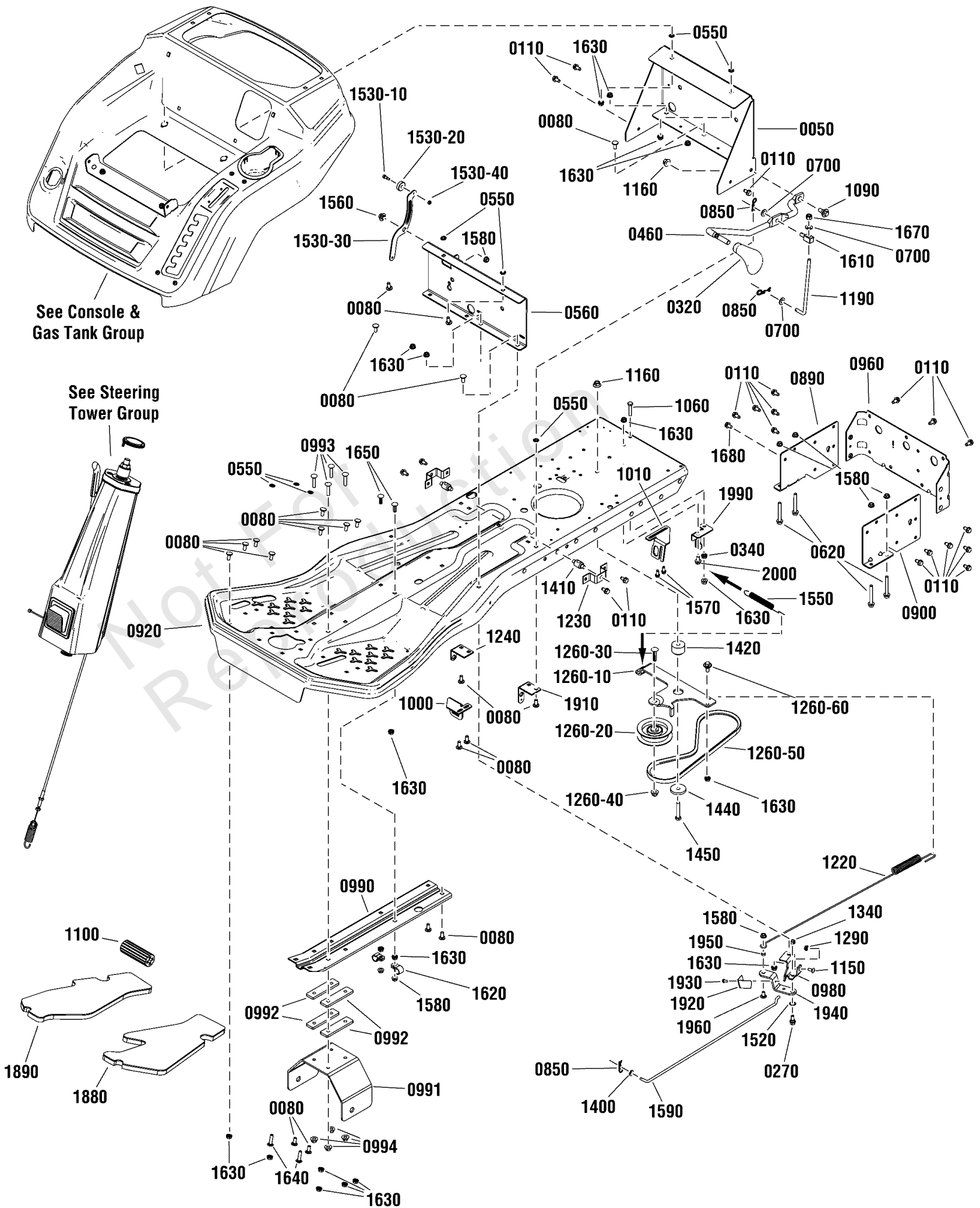
Main Frame Group

REF NO	PART NO	QTY	DESCRIPTION
0050	7301222BMYP	1	BRACKET, Console Support
0080	703185	19	BOLT, 5/16-18X3/4 GR5, Carriage, YZ
0110	703949	21	SCREW, 5/16-18 X .625, Hex Washer Head, Thread Roll, Zinc/Clear
0270	703839	1	BOLT, 5/16-18 X .750, Hex Washer Head Shoulder, Zinc/Clear
0320	7105767YP	1	KNOB, HOC/Speed Selector, 1/2 Hole
0340	703115	1	NUT, 5/16-18, Flange Nylock, GR F
0460	1759818BMYP	1	ROD, Deck Lift
0550	703297	10	RETAINER, 5/16 X .625, Push Nut, GR 5, Zinc/Clear
0560	7301330BMYP	1	BRACKET, Seat Hinge Support
0620	1960586SM	4	SCREW, 5/16-18 x 2-1/2, Hex Flange Whiz Lock, Black
0700	703590	3	WASHER, 3/8
0850	703300	3	PIN, Hair, 3/32 x 1-5/8, GR5, Zinc/Clear
0890	7301306DYP	1	PLATE, Hydro Side, RH, Red
0900	7301309DYP	1	PLATE, Hydro Side, LH, Red
0920		1	FRAME, Main, Hydro RER w/Hitch - Orange (Not a Part Sale Item)
0960	7301297DYP	1	PLATE, Rear Hitch, Red
0980	7301401BMYP	1	BRACKET, Brake/De-Clutch Pivot Anchor (Black)
0990	1759826CJYP	1	BRACE, Frame, RER Hitch
0991	1759828CJYP	1	BRACKET, Hitch, RER
0992	1759833CJYP	4	SPACER, RER Hitch
0993	70410	4	BOLT, Carriage 5/16C X1-1/2 GR5 YZ
0994	704001	4	NUT, 5/16-18 Large Flange Center Lock, ZC/CL
1000	7301353BMYP	1	BRACKET, RMO Switch
1010	7301379BMYP	1	BRACKET, Hydro Park Brake Switch
1060	703217	1	SCREW, 5/16-18 X1.50, Hex Head Cap, Full Thread, GR5, Zinc/Clear
1090	702315	1	BOLT, 3/8-16 X .88, .513 Dia. Shoulder, GR2, Zinc/Clear
1100	1727261SM	1	PEDAL, Brake Rubber
1150	703841	1	BOLT, 1/4-20 X .625, Carriage, Zinc/Clear
1160	703893	2	NUT, 3/8-16 Hex Flange Center Lock, Zinc Plated
1190	7105735YP	1	LINKAGE, 3/8 Deck Rod
1220	7105894YP	1	SPRING, 26.06" Long, 29 Coil, RER Hydro Brake
1230	7301336BMYP	2	BRACKET, Rear Deck Lift
1240	7301346BMYP	1	BRACKET, Forward/Reverse Pivot
1260-10	7301341BMYP	1	BRACKET, Idler
1260-20	1728000SM	1	PULLEY, Idler, 3-1/8 OD, 3/8 ID
1260-30	1931352SM	1	BOLT, Carriage 3/8-16X1.500 G5 BLK
1260-40	703158	1	NUT, 3/8-16, Hex Flange, ESNA, Zinc/Clear
1260-50	7106207YP	1	V-BELT, Hydro Drive, RER (38.24" EL, HA Section)
1260-60	1732426	1	BOLT-SHLDR 5/16-18 0.56LG .49SH .25L
1290	703233	1	NUT, 1/4-20 Hex Flange Lock, GR 5, Zinc/Clear
1340	703164	1	NUT, 5/16-18, Hex Center Lock, GRB, Zinc/Clear
1400	703332	1	WASHER, 1/4, Flat, GR5
1410	7105736YP	2	SWIVEL, .390 Dia., Thru Hole
1420	1729007SM	1	SPACER, .387 I.D. x 1.50 O.D. x 1.04 Long PM Yellow
1440	1960071	1	WASHER-0.375(0.41IDX1.75ODX.25THK) BLK
1450	703589	1	SCREW, 3/8-16 x 2, Hex Head Cap, GR5, Zinc/Clear
1520	704205	1	WASHER, .507 ID X .708 OD X .020 Thk, Shim Plain
1530-10	7106025YP	1	ROLLER, .265 X 1.312 X .344
1530-20	703960	1	BOLT, 10-24 X .750, Shoulder, GR8, Zinc/Clear
1530-30	7301367BMYP	1	PLATE, Roller OPC
1530-40	7091267SM	1	NUT, 10-24, Hex Center Lock, BZ

Main Frame Group

Note: Unless noted otherwise, use the standard torque specifications

Mfg. No: 2691348-00



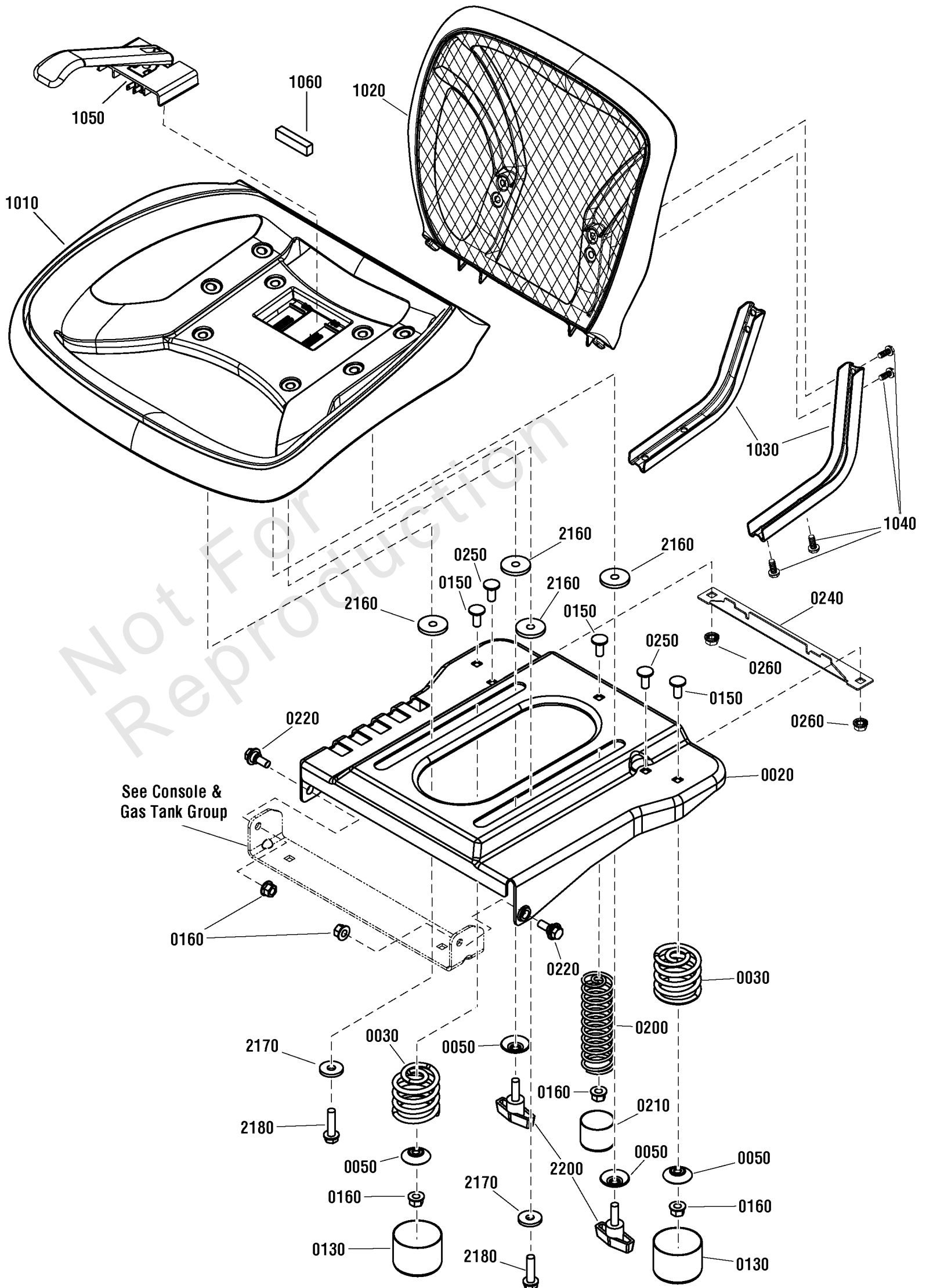
Main Frame Group

REF NO	PART NO	QTY	DESCRIPTION
1550	7013885YP	1	SPRING, Clutch / Brake
1560	1716654SM	1	BOLT, 5/16-18 X .75, .50 Shoulder G5 YEL
1570	703054	4	SCREW, 1/4-20 x 5/8, Hex Washer Head, Thread Roll, Zinc/Clear
1580	704067	4	NUT, 5/16-18, Hex Flanged Center Lock, ZC/CL
1590	7105667YP	1	ROD, Clutch
1610	7072495SM	1	SWIVEL, 3/8 W/ Thru Hole, YZ
1620	7900020SM	2	CLIP, Harness, 5/8"
1630	703409	20	NUT, 5/16-18, Serrated Lock Flange, GR5
1640	703446	2	BOLT, 5/16-18 X 1.25, Carriage, GR5, Zinc/Clear
1650	703483	2	BOLT, 5/16-18 X 1 Carriage, GR5, Zinc/Clear
1670	703117	1	NUT, 3/8-16, Nylock, GR5, Zinc/Clear
1680	703985	1	SCREW, 5/16-18 X .5, Hex Washer Head, Self-Tapping, ZC/CL
1880	1759843YP	1	PAD, Foot, LH, Mech/Hydro RER, 18" X 4.2"
1890	1759844YP	1	PAD, Foot, RH, Hydro, RER
1910	7301403BMYP	1	BRACKET, Pivot, FOR/REV, LH
1920	706335	1	BRACKET, Switch Actuator
1930	704060	1	SCREW, 10-24 x 1/2" Hex Washer Self-Tap, Torx, ZC/CL
1940	706365	1	BRACKET, Brake/De-Clutch Pivot
1950	7011968YP	1	ROLLER, LT Chassis
1960	703447	1	BOLT, 5/16-18 X .625, Carriage, GR5, Zinc/Clear
1990	7301437BMYP	1	GUIDE, Hydro Transmission
2000	703823	1	BOLT, 5/16-18 x 5/8 Hex Flange lock, GR 5, YZ

Seat Group

Note: Unless noted otherwise, use the standard torque specifications

Mfg. No: 2691348-00



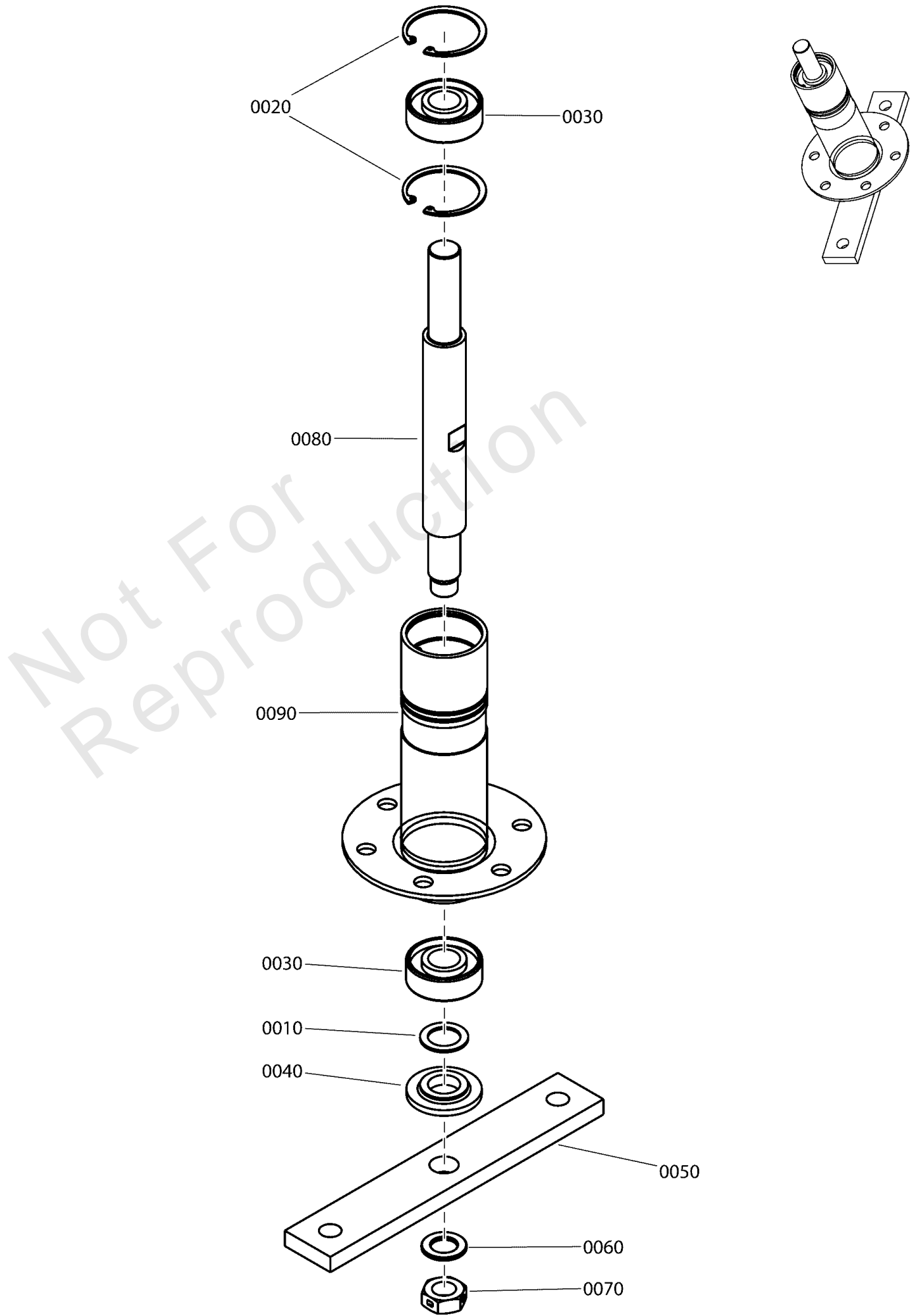
Seat Group

REF NO	PART NO	QTY	DESCRIPTION
0020	7301391BMYP	1	SUPPORT, Seat
0030	1704728SM	2	SPRING, Compression, 19/32 x 2
0050	1709256SM	2	WASHER, Spring, 5/16 ID x 1-1/4 OD
0130	1704724SM	2	COVER, Spring 2" Id X 1-1/2", Black Vinyl
0150	703185	3	BOLT, 5/16-18 x 3/4, Carriage, Short Neck, G5, Zinc/Clear
0160	703115	4	NUT, 5/16-18, Flange Nylock, GR F
0200	7106013YP	1	SPRING, Compression, 4.57" Free Length
0210	5023274SM	1	CAP, Vinyl, 1.375 X 1
0220	703851	2	BOLT, Shoulder, 5/16-18 x 1-1/8
0240	1759821CJYP	1	BRACKET, Seat Limiter
0250	703125	2	BOLT, Carriage, 5/16-18 X 5/8, GR5
0260	703409	2	NUT, 5/16-18, Serrated Lock Flange, GR5
1010	1738013YP	1	SEAT, Bottom, Mesh
1020	1753182YP	1	SEAT, Mesh, Low Back
1030	1737848AYP	2	SUPPORT, Mesh Seat
1040	703354	8	CAPSCREW, Hex Flange, Whiz Lock 5/16-18 x 3/4, G5
1050	1738015	1	SWITCH, Seat, Paddle
1060	1750296	1	FOAM STRIP
2160	1731300SM	4	SPACER, 0.32 ID x 1-1/2 OD x 3/10 THK Powdered Metal Yellow
2170	703298	2	WASHER, 5/16 (.34 ID X 1" OD X .13 THK) GR5, Zinc/Clear
2180	1930595SM	2	CAPSCREW, Hex Hd., 5/16-18 x 1-1/4
2200	1752056YP	2	KNOB, 5/16-18 x 3/4 Two Prong

Spindle & Housing Assembly

Note: Unless noted otherwise, use the standard torque specifications

Mfg. No: 2691348-00



Spindle & Housing Assembly

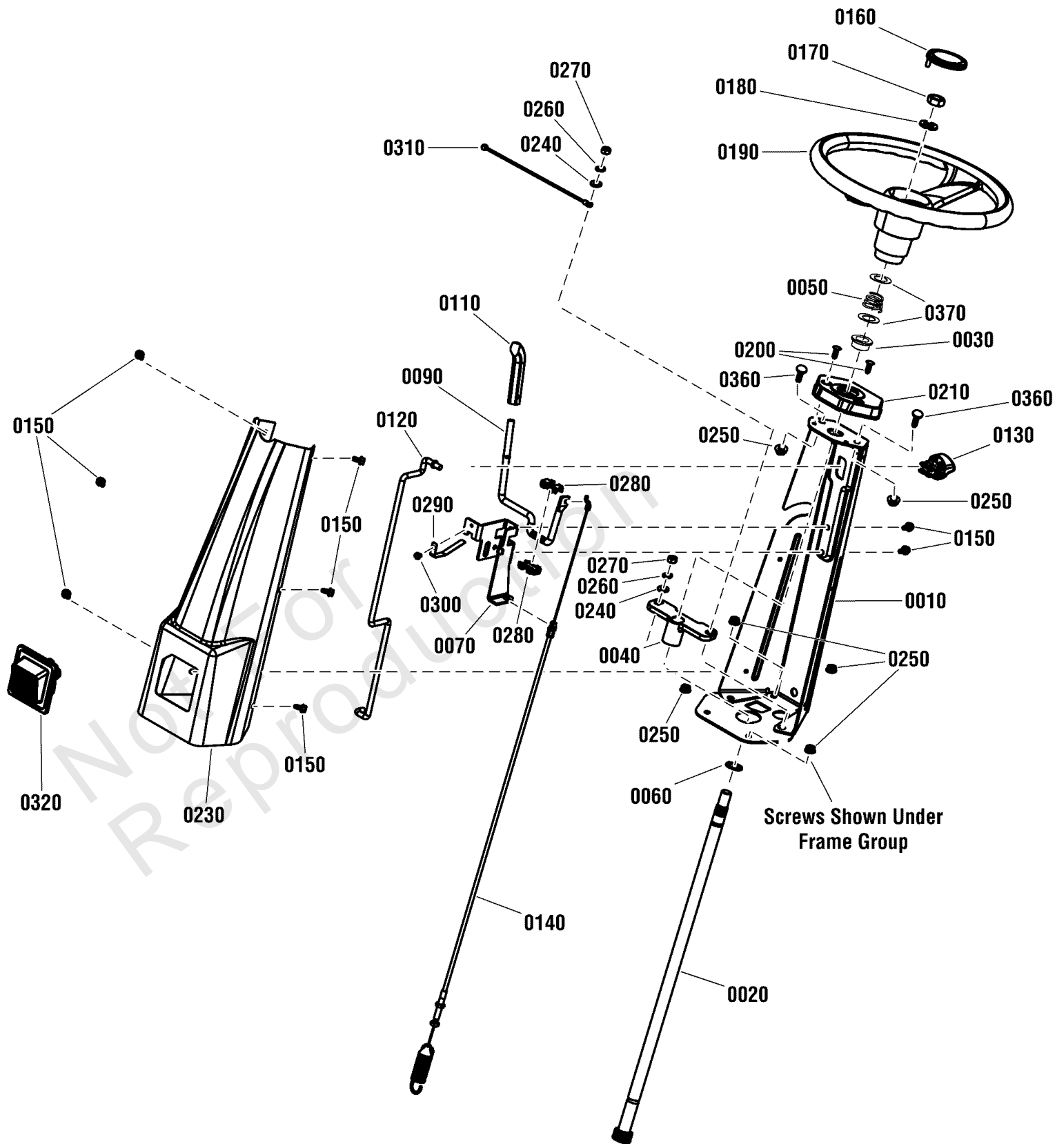
REF NO	PART NO	QTY	DESCRIPTION
0010	7010935SM	1	WASHER, .77 x 1.13 x .06, Flat
0020	7012491SM	2	RING, 1.85", Internal Retaining
0030	7013313SM	2	BEARING, Ball, 1.78 OD, .750 ID, .610 Wide
0040	7014407SM	1	WASHER, Spindle, .75 ID, 1.75 OD, .28 Thick, PM
0050	7031184YP	1	HOLDER, Blade (3 Hole)
0060	7044782YP	1	SPACER, Blade Centering (.63 X 1.05 X .094)
0070	7090356YP	1	NUT, 5/8-18 Hex Center Lock Jam, GR5, ZP
0080	7200147YP	1	SHAFT, Spindle, 9.737"
0090	7400327YP	1	WELDMENT, Spindle Housing (7" Tall)

Not For
Reproduction

Steering Tower Group

Note: Unless noted otherwise, use the standard torque specifications

Mfg. No: 2691348-00



Steering Tower Group

REF NO	PART NO	QTY	DESCRIPTION
0010	7301293BMYP	1	SUPPORT, Steering Column
0020	7105572YP	1	SHAFT, Steering
0030	1729665SM	1	BUSHING, Steering, 3/4 ID
0040	7105751YP	1	BEARING, Steering Shaft, 3/4 ID
0050	7106341YP	1	SPRING, Conical Compression
0060	703151	2	WASHER, .766 ID X 1.06 OD X .07, Flat, Zinc/Clear
0070	7301375BMYP	1	BRACKET, Blade Engagement Handle
0090	7105731BMYP	1	LEVER, PTO Engagement
0110	7023657YP	1	GRIP, Handle, 3/8
0120	7105654YP	1	ROD, Parking Brake
0130	7105745YP	1	KNOB, Parking Brake
0140	7105566YP	1	CABLE, Blade Engagement, 40.82"
0150	703953	8	SCREW, 1/4-20 X 5/8, Torx Pan Head Self-Tapping, Zinc/Clear
0160	1725024SM	1	CAP, Steering Wheel, Plain
0170	1960576SM	1	NUT, 5/8-18, Hex Lock, Thin ESNA Light, Black
0180	703580	1	WASHER, 5/8" (0.66 ID x 1.12 OD x .11 Thk) Zinc/Clear
0190	7105776YP	1	STEERING WHEEL, 13 DIA, 5.87 Dish
0190	706337	1	STEERING WHEEL, 13 DIA, 5.87 Deep Dish
0200	7091272YP	2	FASTENER, 1/4 x 3/4 Ratchet
0210	7105597YP	1	COVER, Steering Tower/Support
0230	7301260DYP	1	TOWER, Steering, Red
0240	703350	2	WASHER, 5/16, Flat SAE, Zinc/Clear
0250	703409	6	NUT, 5/16-18, Serrated Lock Flange, GR5
0260	703116	2	WASHER, .32 X .58 X .08, Split Lock, YZ
0270	703465	4	NUT, 5/16-18, GRB, Zinc/Clear
0280	7106027YP	2	BUSHING, PTO Lever, Plastic
0290	7301373YP	1	PADDLE, PTO Lever
0300	704061	1	SCREW, 10-32 x 1/4 Hex Washer Self-Tap, BZ
0310	7106051YP	1	WIRE, RER Head Light Ground
0320	7105923YP	1	ASSEMBLY, Head Light
0320-30	1755317YP	1	* LAMP, 12VAC 25-30 Lumen LED ((1156 Socket, Type T25-BA15S)(Not Shown)
0360	703447	2	BOLT, 5/16-18 X .625, Carriage, GR5, Zinc/Clear
0370	7031965YP	2	WASHER, 1.25 X .765 X .03, Thrust, ZC/CL

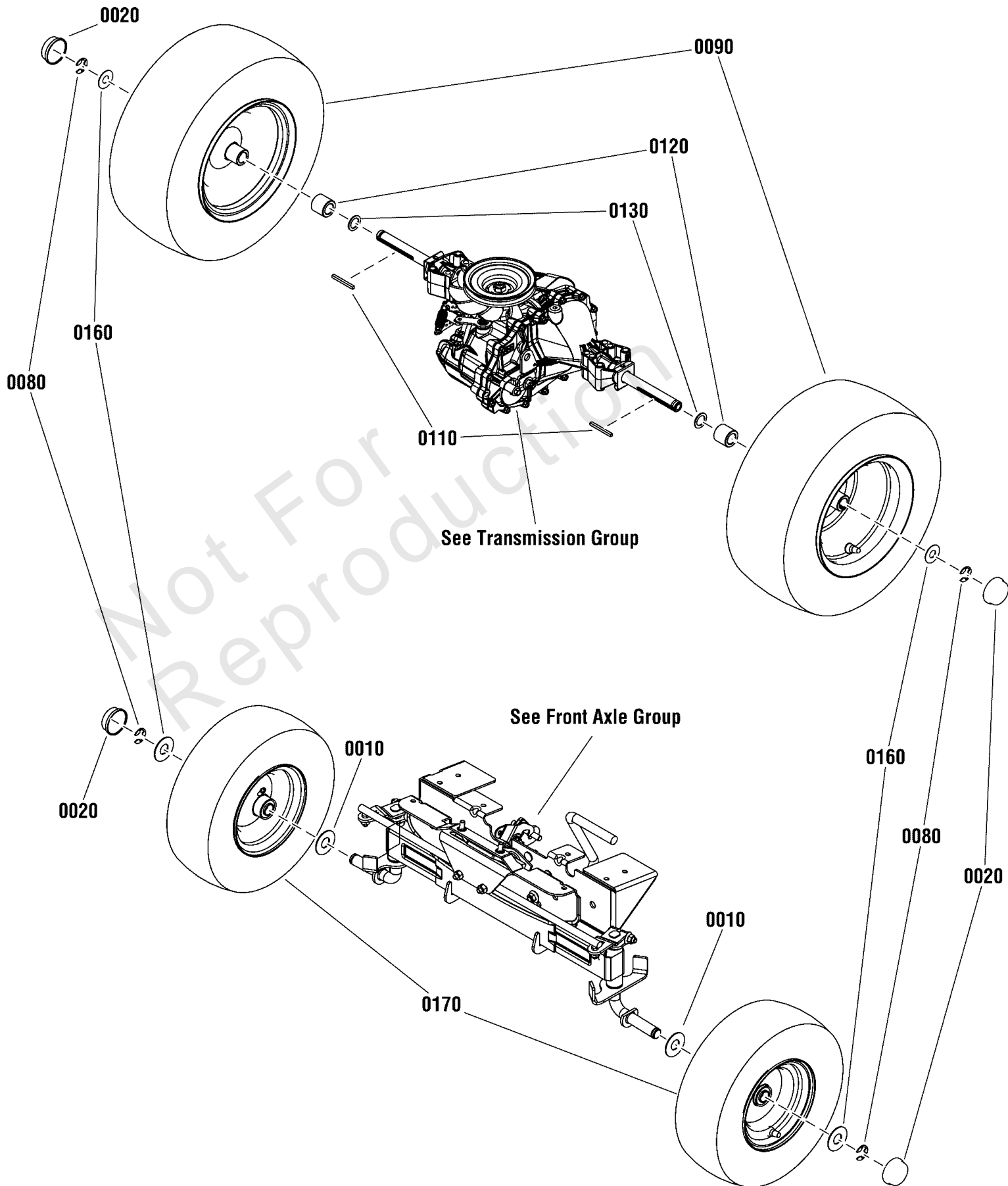
Footnotes:

Note* See your local hardware store for replacement bulbs.

Wheel Group

Note: Unless noted otherwise, use the standard torque specifications

Mfg. No: 2691348-00



Wheel Group

REF NO	PART NO	QTY	DESCRIPTION
0010	7031965YP	2	WASHER, 1.25 X .765 X .03, Thrust, ZC/CL
0020	094618MA	4	HUB CAP
0080	0011X3MA	4	E-RING, .750D-.050T
0090	7106092YP	2	ASSEMBLY, Rear Wheel, 16 X 6.50-8, 2P K358
0110	720258	2	KEY, 3/16 Square x 2 Long
0120	704204	2	SPACER, Axle, .77" ID, 1.25" OD, 1.15" Long, Zinc/Clear
0130	7010935SM	4	WASHER, .77 x 1.13 x .06, Flat
0160	722620	4	WASHER, .765 ID, 1.8 OD, .0598 Thk, Flat ZP
0170	7106090YP	2	ASSEMBLY, Front Wheel, 13" X 5-6
0170-10	7012234SM	4	VALVE, Stem & Cap -(Not Shown)
0170-20	7011807YP	4	BEARING, Ball, Flanged (3/4 ID, 1-3/8 OD) -(Not Shown)
0170-50	703957	2	GREASE FITTING, 1/4-28X31/32 Zinc/Clear -(Not Shown)

Not For
Reproduction

Hardware Identification & Torque Specifications

Torque Specification Chart								
FOR STANDARD METRIC MACHINE HARDWARE (Tolerance ± 20%)								
Property Class	5.6		8.8		10.9		12.9	
	Class 5.6		Class 8.8		Class 10.9		Class 12.9	
Size Of Hardware	in/lbs	Nm.	in/lbs	Nm.	in/lbs	Nm.	in/lbs	Nm.
	ft/lbs		ft/lbs		ft/lbs		ft/lbs	
M3	5.88	.56	13.44	1.28	19.2	1.80	22.92	2.15
M4	13.44	1.28	30.72	2.90	43.44	4.10	52.56	4.95
M5	26.4	2.50	60.96	5.75	5.97	8.10	7.15	9.7
M6	44.64	4.3	7.3	9.9	10.3	14	12.1	16.5
M7	5.2	7.1	12.1	16.5	16.9	23	19.9	27
M8	7.7	10.5	17.7	24	25	34	29	40
M10	15	21	35	48	50	67	59	81
M12	26	36	61	83	86.2	117	103	140
M14	42	58	101	132	136	185	162	220
M16	64	88	147	200	210	285	250	340
M18	89	121	202	275	287	390	346	470
M20	126	171	290	390	405	550	486	660
M22	169	230	390	530	559	745	656	890
M24	217	295	497	375	708	960	840	1140
M27	320	435	733	995	1032	1400	1239	1680
M30	435	590	995	1350	1401	1900	1681	2280
M33	590	800	1349	1830	1902	2580	2278	3090
M36	759	1030	1740	2360	2441	3310	2935	3980
M39	988	1340	2249	3050	3163	4290	3798	5150

Torque Specification Chart						
FOR STANDARD MACHINE HARDWARE (Tolerance ± 20%)						
Hardware Grade	No Marks		SAE Grade 5		SAE Grade 8	
	SAE Grade 2		SAE Grade 5		SAE Grade 8	
Size Of Hardware	in/lbs	Nm.	in/lbs	Nm.	in/lbs	Nm.
	ft/lbs		ft/lbs		ft/lbs	
8-32	19	2.1	30	3.4	41	4.6
8-36	20	2.3	31	3.5	43	4.9
10-24	27	3.1	43	4.9	60	6.8
10-32	31	3.5	49	5.5	68	7.7
1/4-20	66	7.6	8	10.9	12	16.3
1/4-28	76	8.6	10	13.6	14	19.0
5/16-18	11	15.0	17	23.1	25	34.0
5/16-24	12	16.3	19	25.8	29	34.0
3/8-16	20	27.2	30	40.8	45	61.2
3/8-24	23	31.3	35	47.6	50	68.0
7/16-14	30	40.8	50	68.0	70	95.2
7/16-20	35	47.6	55	74.8	80	108.8
1/2-13	50	68.0	75	102.0	110	149.6
1/2-20	55	74.8	90	122.4	120	163.2
9/16-12	65	88.4	110	149.6	150	204.0
9/16-18	75	102.0	120	163.2	170	231.2
5/8-11	90	122.4	150	204.0	220	299.2
5/8-18	100	136	180	244.8	240	326.4
3/4-10	160	217.6	260	353.6	386	525.0
3/4-16	180	244.8	300	408.0	420	571.2
7/8-9	140	190.4	400	544.0	600	816.0
7/8-14	155	210.8	440	598.4	660	897.6
1-8	220	299.2	580	788.8	900	1,244.0
1-12	240	326.4	640	870.4	1,000	1,360.0

The guides and ruler furnished below are designed to help you select the appropriate hardware.

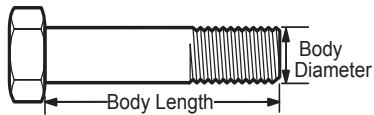


Nut, M8

Thread Diameter (mm)

Inside Diameter (in) Threads per inch

Nut, 1/2-16



Screw, M8- 1.25 x 25

Thread Diameter (mm) Distance between threads (mm) Body Length (mm)

Body Diameter Threads per inch Body Length (in)

Screw, 1/2- 16 x 2



Standard Hardware Sizing

When a washer or nut is identified as 1/2" (M8), this is the *Nominal size*, meaning the *inside diameter* is 1/2 inch (8mm metric thread diameter); if a second number is present it represents the *threads per inch* (distance between threads).

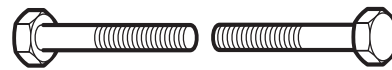
When bolt or capscrew is identified as 1/2 - 16 x 2" (M8 - 1.25 x 50), this means the *Nominal size*, or body diameter is 1/2 inch (8mm metric thread diameter), the second number, 16, represents the *threads per inch*, (*distance between threads*). The final number is the body length of the bolt or screw, 2 inches (50mm).

NOTES

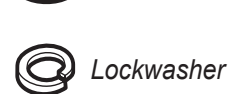
- These torque values are to be used for all hardware excluding: locknuts, self-tapping screws, thread forming screws, sheet metal screws and socket head setscrews.
- Recommended seating torque values for locknuts:
 - for prevailing torque locknuts - use 65% of grade 5 torques.
 - for flange whizlock nuts and screws - use 135% of grade 5 torques.
- Unless otherwise noted on assembly drawings, all torque values must meet this specification.

Common Hardware Types

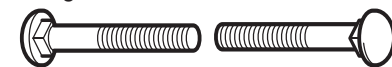
Hex Head Capscrew



Washer



Carriage Bolt



Hex Nut

Wrench & Fastener Size Guide

1/4" Bolt or Nut Wrench—7/16"	5/16" Bolt or Nut Wrench—1/2"	3/8" Bolt or Nut Wrench—9/16"	7/16" Bolt or Nut Wrench (Bolt)—5/8" Wrench (Nut)—11/16"	1/2" Bolt or Nut Wrench—3/4"
M6 Bolt or Nut Wrench—10mm	M8 Bolt or Nut Wrench—13mm	M10 Bolt or Nut Wrench—17mm	M12 Bolt or Nut Wrench—19mm	M14 Bolt or Nut Wrench—22mm

