



PARTS LIST



Models

Mfg. No.	Description
880422X51N	Murray Walk-Behind Mower, SP, CE (2009)

Manual Part No. 881003
Revision A
Rev. Date: 11/3/2010

Not for
Reproduction

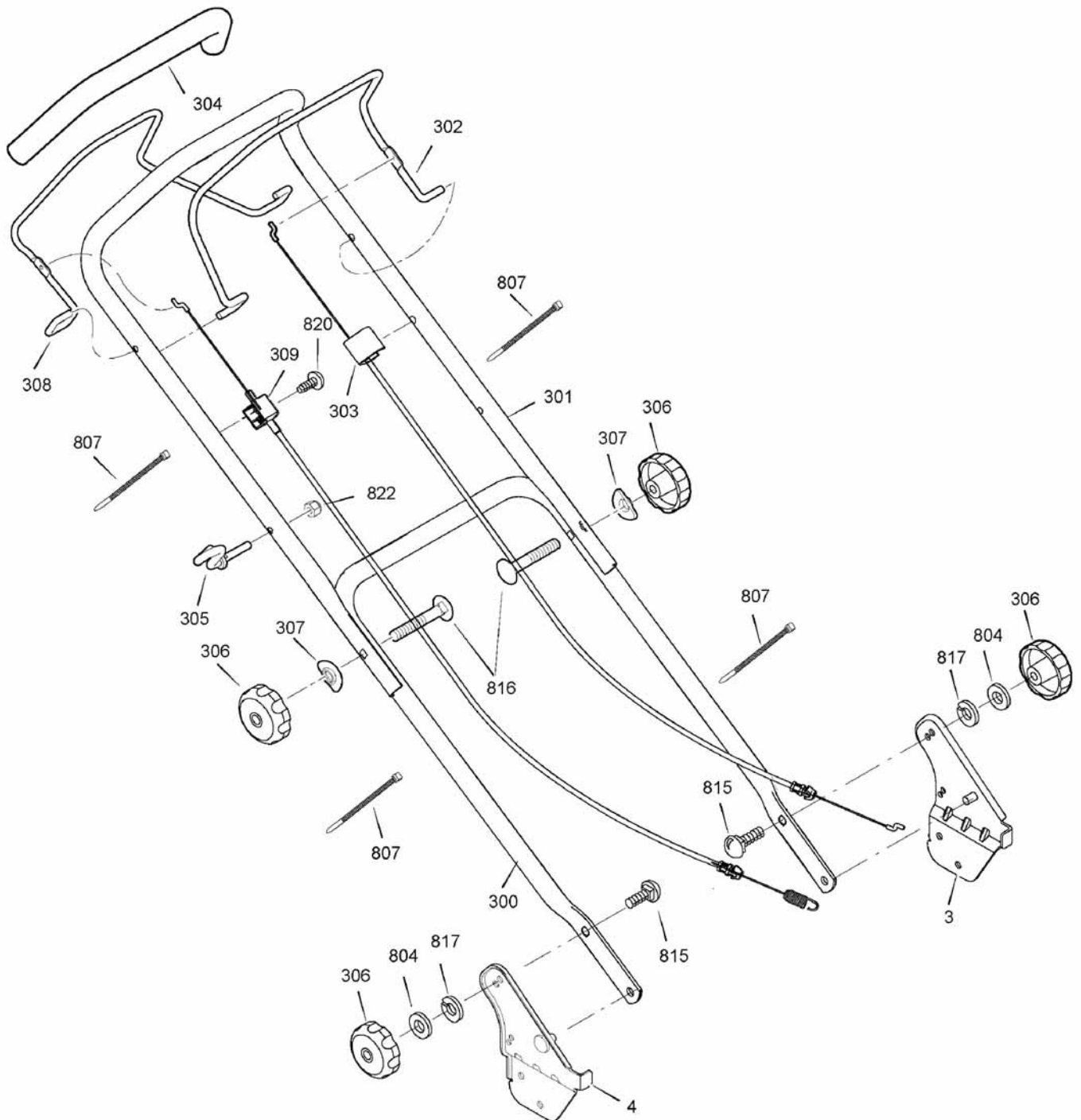
PRODUCT COMPONENTS	PAGES
Handle Assembly	4
Deck & Engine Group	6
Drive Group	10
Torque Specification Chart	Inside Back Cover

Not for
Reproduction

Handle Assembly

0003

NOTE: Unless noted otherwise,
use the standard hardware torque
specification chart.



The above parts group applies to the following Mfg. Nos.:

880422X51N - Murray Walk-Behind Mower

Handle Assembly

REF NO	PART NO.	QTY.	DESCRIPTION
3	700141	1	BRACKET ASSEMBLY, Left Handle
4	700142	1	BRACKET ASSEMBLY, Right Handle
300	700222	1	HANDLE, Lower
301	700097	1	HANDLE, Upper
302	700186	1	LEVER, Engine Stop
303	700158	1	CABLE, Engine Stop
304	700213	1	TUBING, Foam
305	672510MA	1	GUIDE, Rope
306	700145	1	KNOB, 5/16-18
307	700148	1	WASHER, Formed
308	700192	1	LEVER, Drive
309	700115	1	CABLE ASSEMBLY, Drive
804	700150	1	WASHER, 5/8
807	700010	1	CABLE TIE
815	700146	1	BOLT, Carriage, 5/16-18 x 1-1/8
816	002X77MA	1	BOLT, Carriage, 5/16-18 x 2
817	700078	1	Washer, Lock
820	26X256MA	1	SCREW, Tap, #10 x 1-1/4
822	15X116MA	1	NUT, Hex, 1/4-20

Not for
Reproduction

Footnotes

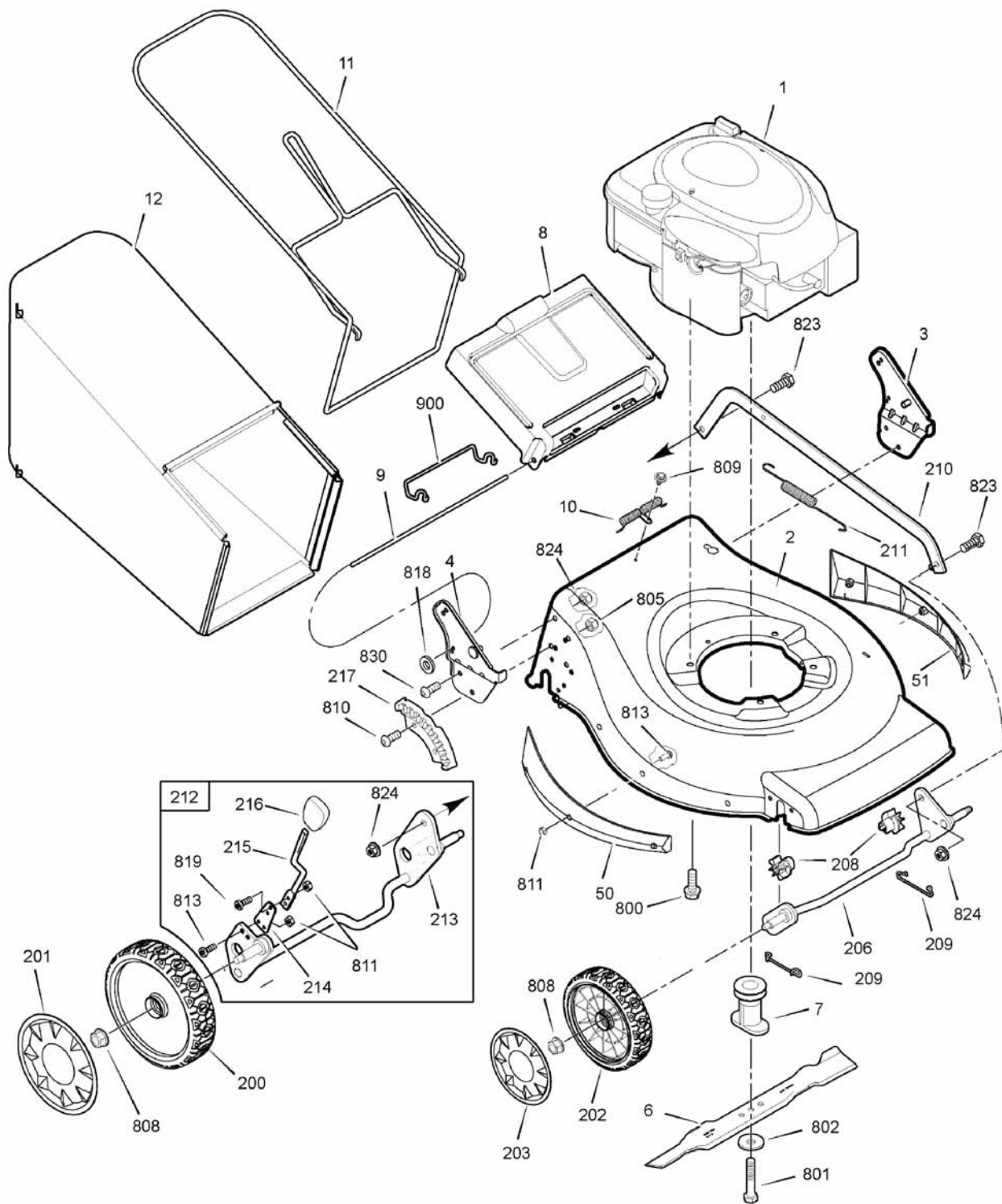
The above parts group applies to the following Mfg. Nos.:

880422X51N - Murray Walk-Behind Mower

Deck & Engine Group

0001

NOTE: Unless noted otherwise,
use the standard hardware torque
specification chart.



The above parts group applies to the following Mfg. Nos.:

880422X51N - Murray Walk-Behind Mower

Deck & Engine Group

REF NO	PART NO.	QTY.	DESCRIPTION
1	10T802-0140-B1	1	* ENGINE (Engine Model: 10T802-0140-B1)
2	880864YP	1	MOWER HOUSING
3	700141	1	BRACKET ASSEMBLY, Left Handle
4	700142	1	BRACKET ASSEMBLY, Right Handle
6	700162	1	BLADE, 16 in
7	700214	1	BLADE ADAPTER ASSEMBLY
8	700099	1	DOOR, Rear
9	700095	1	ROD, Rear Door
10	700001	1	SPRING, Torsion Rear Door
11	700208	1	FRAME ASSEMBLY
12	700100	1	BAG ASSEMBLY
50	700226	1	SIDE GUARD, Right
51	700227	1	SIDE GUARD, Left
200	700133	1	WHEEL, Rear
201	700195	1	HUBCAP, Rear
202	700153	1	WHEEL, Front
203	700155	1	HUBCAP, Front
206	700061	1	CROSSBAR ASSEMBLY, Front
208	700059	1	BUSHING, Front Crossbar
209	700071	1	SPRING, Clip Crossbar
210	700207	1	LINK, Single Lever
211	700073	1	SPRING, Extension
212	881233YP	1	CROSSBAR ASSEMBLY, Rear
213	880829YP	1	REAR CROSSBAR
214	700164	1	SPRING, Adjuster
215	700243	1	LEVER, Height Adjustment
216	700172	1	KNOB, Adjuster
217	700118	1	BRACKET, Height Adjuster
800	0025X6MA	1	SCREW, Hex Head, 3/8-16 x 1
801	700011	1	BOLT, Blade, 3/8-24 x 2
802	1101989MA	1	WASHER, Belleville
805	700002	1	NUT, Nylock, M8 x 1-1/4
808	015X84MA	1	NUT, Flange, 3/8-16
809	26X245MA	1	SCREW, Self Tap, #10-16 x 1/2
810	700081	1	BOLT, Hex Key Head
811	700103	1	NUT, Nylock
813	700122	1	SCREW, Torx Head, M5 x .8 x 14mm
818	700156	1	NUT, Speed
819	700218	1	SCREW, Torx Head, M5 x .8 x 12.5mm
823	700247	1	BOLT, Shoulder, 5/16-18 x 1
824	015X88MA	1	Nut, Flange, 5/16-18
830	48901MA	1	SCREW, 5/16-18 x 3/4
900	880910YP	1	SPRING CLIP, Rear Door

Footnotes

NOTE: * Purchase engine parts from engine manufacturer dealer.

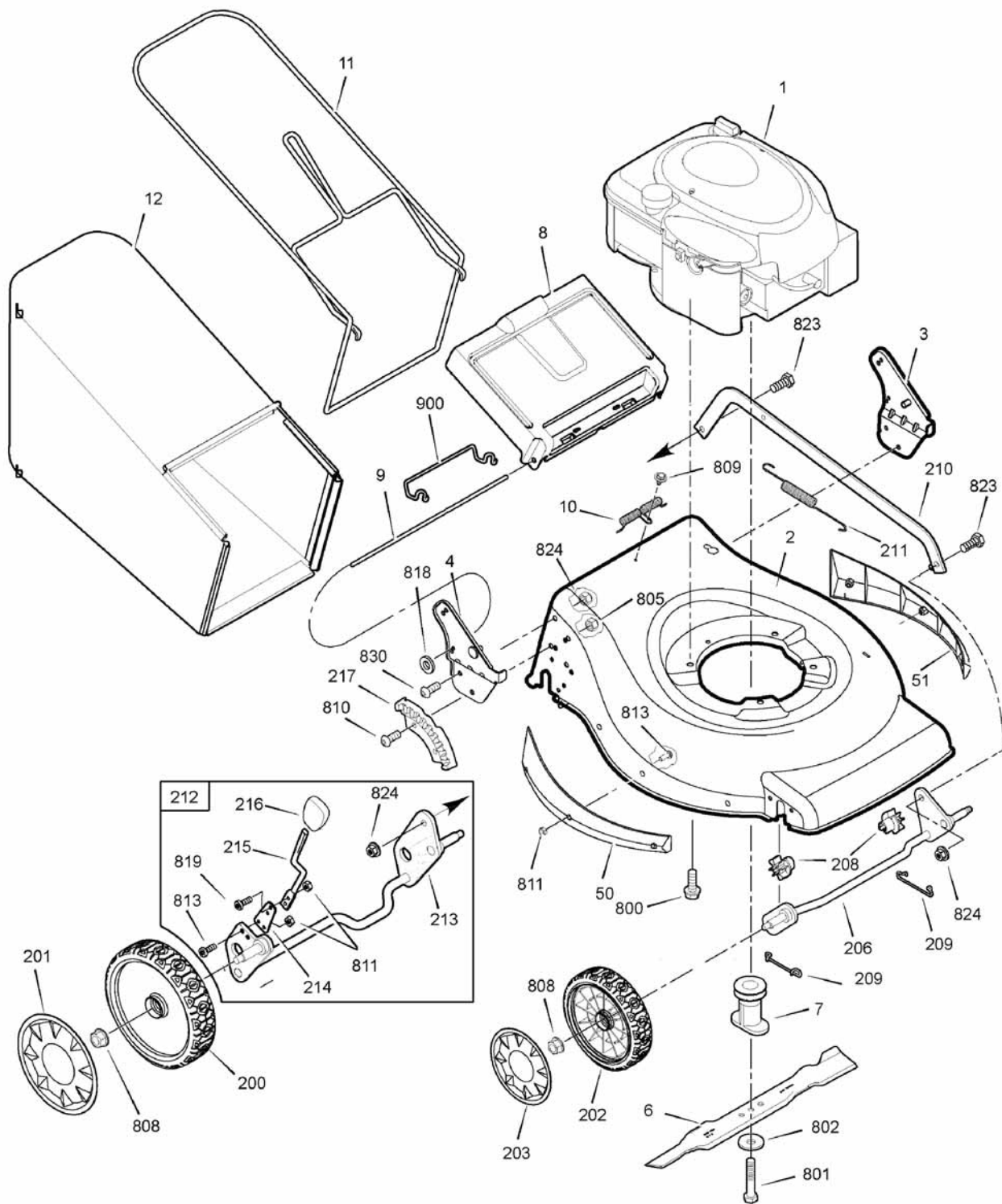
The above parts group applies to the following Mfg. Nos.:

880422X51N - Murray Walk-Behind Mower

Deck & Engine Group

0001

NOTE: Unless noted otherwise,
use the standard hardware torque
specification chart.



The above parts group applies to the following Mfg. Nos.:

880422X51N - Murray Walk-Behind Mower

Deck & Engine Group

REF NO	PART NO.	QTY.	DESCRIPTION
1000	700271	1	DECAL KIT
1001	880900YP	1	MANUAL KIT

Not for
Reproduction

Footnotes

NOTE: * Purchase engine parts from engine manufacturer dealer.

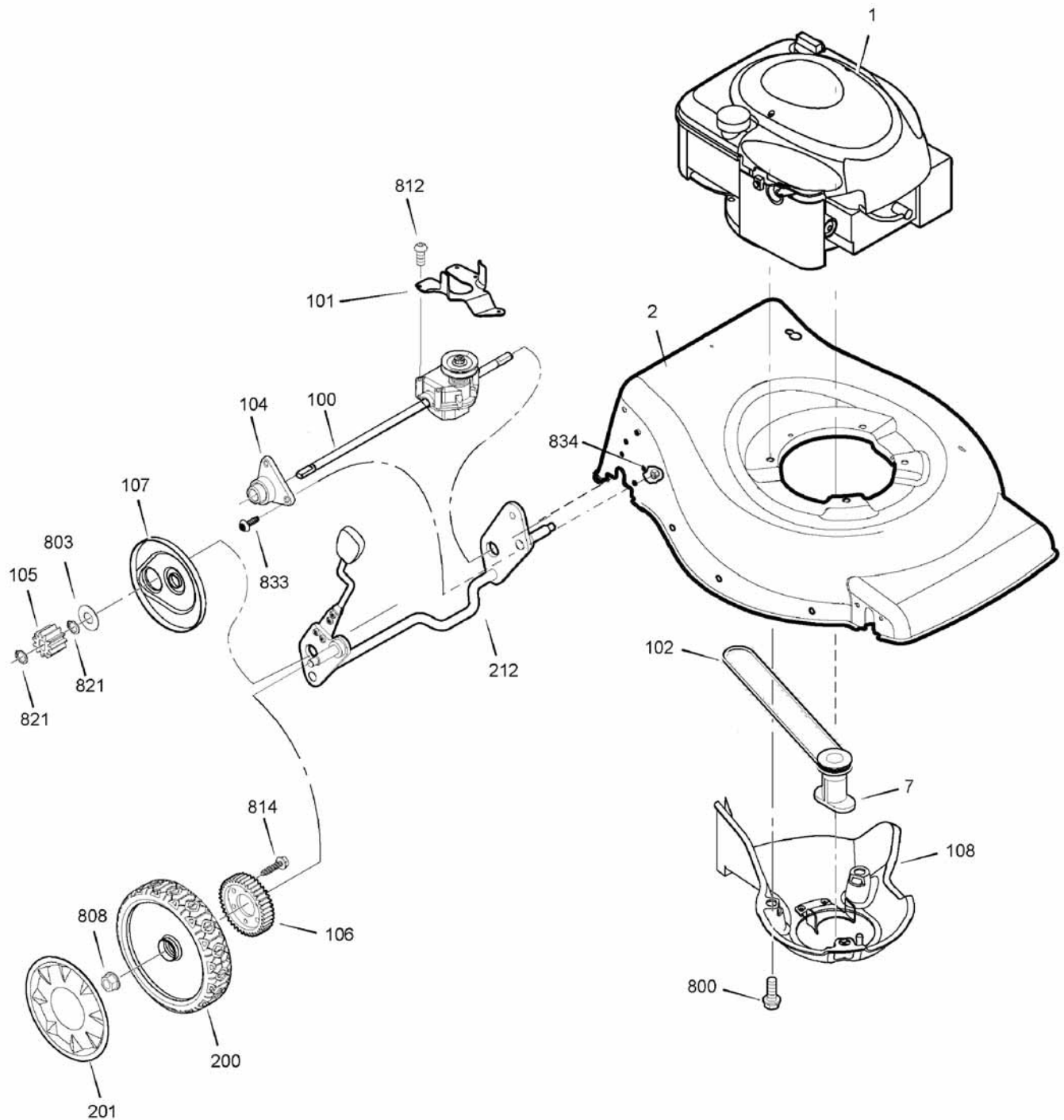
The above parts group applies to the following Mfg. Nos.:

880422X51N - Murray Walk-Behind Mower

Drive Group

NOTE: Unless noted otherwise,
use the standard hardware torque
specification chart.

0002



The above parts group applies to the following Mfg. Nos.:

880422X51N - Murray Walk-Behind Mower

Drive Group

REF NO	PART NO.	QTY.	DESCRIPTION
1	10T802-0140-B1	1	* ENGINE (Engine Model: 10T802-0140-B1)
2	880864YP	1	MOWER HOUSING
7	700214	1	BLADE ADAPTER ASSEMBLY
100	700127	1	TRANSMISSION
101	700120	1	BELT GUIDE, Transmission
102	700123	1	V-BELT
104	880787YP	1	SLEEVE ASSEMBLY, Rear Axle
105	700132	1	GEAR, Pinion
106	700134	1	GEAR, Drive
107	700161	1	DUST COVER
108	700234	1	BELT COVER ASSEMBLY
200	700133	1	WHEEL, Rear
201	700195	1	HUBCAP, Rear
212	881233YP	1	CROSSBAR ASSEMBLY, Rear
800	0025X6MA	1	SCREW, Hex Head, 3/8-16 x 1
803	700131	1	WASHER, Thrust
808	015X84MA	1	NUT, Flange, 3/8-16
812	880760YP	1	SCREW, #10 x 1
814	26X296MA	1	SCREW, 1/4-15 x 3/4
821	700237	1	RING, External Retaining
833	880845YP	1	SCREW, Torx, 1/4-20 x 5/8
834	880859YP	1	NUT, Flange Lock, 1/4-20

Not for
Reproduction

Footnotes

NOTE: * Purchase engine parts from engine manufacturer dealer.

The above parts group applies to the following Mfg. Nos.:

880422X51N - Murray Walk-Behind Mower

Not for
Reproduction

Not for
Reproduction

Not for
Reproduction

Hardware Identification & Torque Specifications

Torque Specification Chart								
FOR STANDARD METRIC MACHINE HARDWARE (Tolerance ± 20%)								
Property Class	5.6		8.8		10.9		12.9	
	Class 5.6		Class 8.8		Class 10.9		Class 12.9	
Size Of Hardware	in/lbs		in/lbs		in/lbs		in/lbs	
	ft/lbs	Nm.	ft/lbs	Nm.	ft/lbs	Nm.	ft/lbs	Nm.
M3	5.88	.56	13.44	1.28	19.2	1.80	22.92	2.15
M4	13.44	1.28	30.72	2.90	43.44	4.10	52.56	4.95
M5	26.4	2.50	60.96	5.75	5.97	8.10	7.15	9.7
M6	44.64	4.3	7.3	9.9	10.3	14	12.1	16.5
M7	5.2	7.1	12.1	16.5	16.9	23	19.9	27
M8	7.7	10.5	17.7	24	25	34	29	40
M10	15	21	35	48	50	67	59	81
M12	26	36	61	83	86.2	117	103	140
M14	42	58	101	132	136	185	162	220
M16	64	88	147	200	210	285	250	340
M18	89	121	202	275	287	390	346	470
M20	126	171	290	390	405	550	486	660
M22	169	230	390	530	559	745	656	890
M24	217	295	497	375	708	960	840	1140
M27	320	435	733	995	1032	1400	1239	1680
M30	435	590	995	1350	1401	1900	1681	2280
M33	590	800	1349	1830	1902	2580	2278	3090
M36	759	1030	1740	2360	2441	3310	2935	3980
M39	988	1340	2249	3050	3163	4290	3798	5150

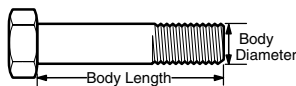
The guides and ruler furnished below are designed to help you select the appropriate hardware.



Nut, M8

Thread Diameter (mm)
Inside Diameter (in)
Threads per inch

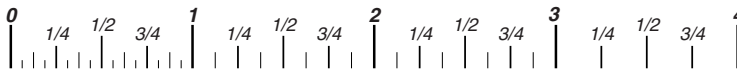
Nut, 1/2-16



Screw, M8- 1.25 x 25

Thread Diameter (mm)
Body Diameter
Distance between threads (mm)
Threads per inch
Body Length (mm)
Body Length (in)

Screw, 1/2- 16 x 2



Standard Hardware Sizing

When a washer or nut is identified as **1/2"** (M8), this is the *Nominal size*, meaning the *inside diameter* is 1/2 inch (8mm metric thread diameter); if a second number is present it represents the *threads per inch* (distance between threads).

When bolt or capscrew is identified as **1/2 - 16 x 2"** (M8 - 1.25 x 50), this means the *Nominal size*, or body diameter is 1/2 inch (8mm metric thread diameter), the second number, 16, represents the *threads per inch*, (1.25 thread diameter). The final number is the body length of the bolt or screw, 2 inches (50mm).

Torque Specification Chart						
FOR STANDARD MACHINE HARDWARE (Tolerance ± 20%)						
Hardware Grade	No Marks		SAE Grade 5		SAE Grade 8	
	SAE Grade 2		SAE Grade 5		SAE Grade 8	
Size Of Hardware	in/lbs		in/lbs		in/lbs	
	ft/lbs	Nm.	ft/lbs	Nm.	ft/lbs	Nm.
8-32	19	2.1	30	3.4	41	4.6
8-36	20	2.3	31	3.5	43	4.9
10-24	27	3.1	43	4.9	60	6.8
10-32	31	3.5	49	5.5	68	7.7
1/4-20	66	7.6	8	10.9	12	16.3
1/4-28	76	8.6	10	13.6	14	19.0
5/16-18	11	15.0	17	23.1	25	34.0
5/16-24	12	16.3	19	25.8	29	34.0
3/8-16	20	27.2	30	40.8	45	61.2
3/8-24	23	31.3	35	47.6	50	68.0
7/16-14	30	40.8	50	68.0	70	95.2
7/16-20	35	47.6	55	74.8	80	108.8
1/2-13	50	68.0	75	102.0	110	149.6
1/2-20	55	74.8	90	122.4	120	163.2
9/16-12	65	88.4	110	149.6	150	204.0
9/16-18	75	102.0	120	163.2	170	231.2
5/8-11	90	122.4	150	204.0	220	299.2
5/8-18	100	136	180	244.8	240	326.4
3/4-10	160	217.6	260	353.6	386	525.0
3/4-16	180	244.8	300	408.0	420	571.2
7/8-9	140	190.4	400	544.0	600	816.0
7/8-14	155	210.8	440	598.4	660	897.6
1-8	220	299.2	580	788.8	900	1,244.0
1-12	240	326.4	640	870.4	1,000	1,360.0

NOTES

- These torque values are to be used for all hardware excluding: locknuts, self-tapping screws, thread forming screws, sheet metal screws and socket head setscrews.
- Recommended seating torque values for locknuts:
 - for prevailing torque locknuts - use 65% of grade 5 torques.
 - for flange whizlock nuts and screws - use 135% of grade 5 torques.
- Unless otherwise noted on assembly drawings, all torque values must meet this specification.

Common Hardware Types

Hex Head Capscrew



Washer



Lockwasher

Carriage Bolt



Hex Nut

Wrench & Fastener Size Guide

1/4" Bolt or Nut Wrench—7/16"	5/16" Bolt or Nut Wrench—1/2"	3/8" Bolt or Nut Wrench—9/16"	7/16" Bolt or Nut Wrench (Bolt)—5/8" Wrench (Nut)—11/16"	1/2" Bolt or Nut Wrench—3/4"
M6 Bolt or Nut Wrench—10mm	M8 Bolt or Nut Wrench—13mm	M10 Bolt or Nut Wrench—17mm	M12 Bolt or Nut Wrench—19mm	M14 Bolt or Nut Wrench—22mm

Not for
Reproduction

**IT IS THE POLICY OF BRIGGS & STRATTON CORP. TO IMPROVE ITS PRODUCTS
WHENEVER IT IS POSSIBLE AND PRACTICAL TO DO SO. WE RESERVE THE RIGHT TO
MAKE CHANGES OR ADD IMPROVEMENTS AT ANY TIME WITHOUT INCURRING ANY
OBLIGATION TO MAKE SUCH CHANGES ON PRODUCTS.**

Briggs & Stratton Yard Power Products Group

3515 N. 124 Street / PO Box 702
Wauwatosa, WI 53222 USA

www.murray.com

© Copyright 2010 by Briggs & Stratton Corporation
Milwaukee, WI, USA. All rights reserved