



Parts Manual

Mfg. No: 7800979-00
2185020, 21" 8.75 GTP HV Steel Deck
Series 20



7061201 - 21" Recycling Steel Deck Plug Kit.
7061200 - 21" Recycling Steel Deck Cover Kit.

Not For
Reproduction

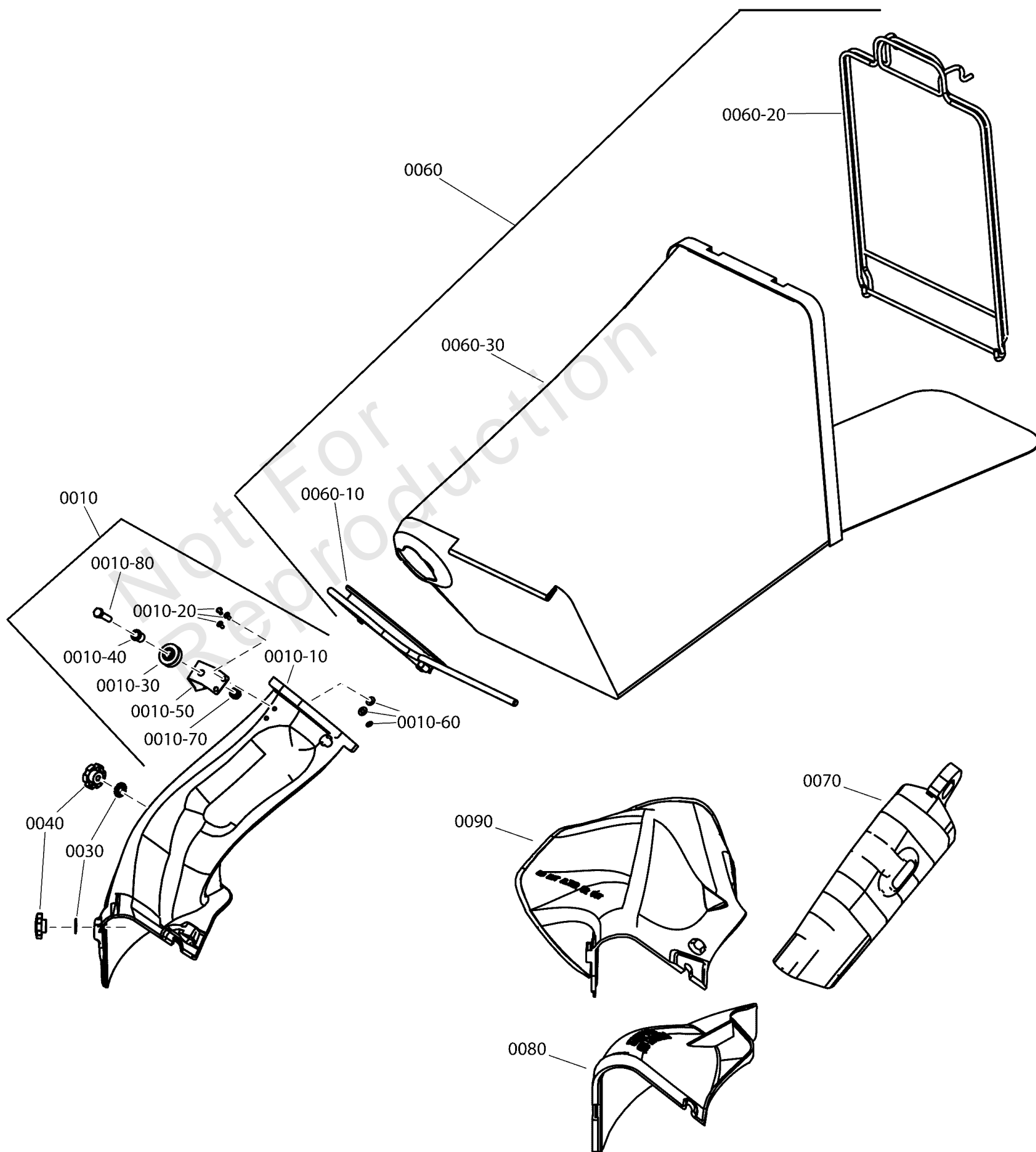
Model Components	Page
Bag, Discharge & Mulch Group.....	4
Decals.....	6
Engine Group.....	8
Handle Group.....	10
Wheel Group.....	12
Torque Specification Chart.....	14

Not For
Reproduction

Bag, Discharge & Mulch Group

Note: Unless noted otherwise, use the standard torque specifications

Mfg. No: 7800979-00



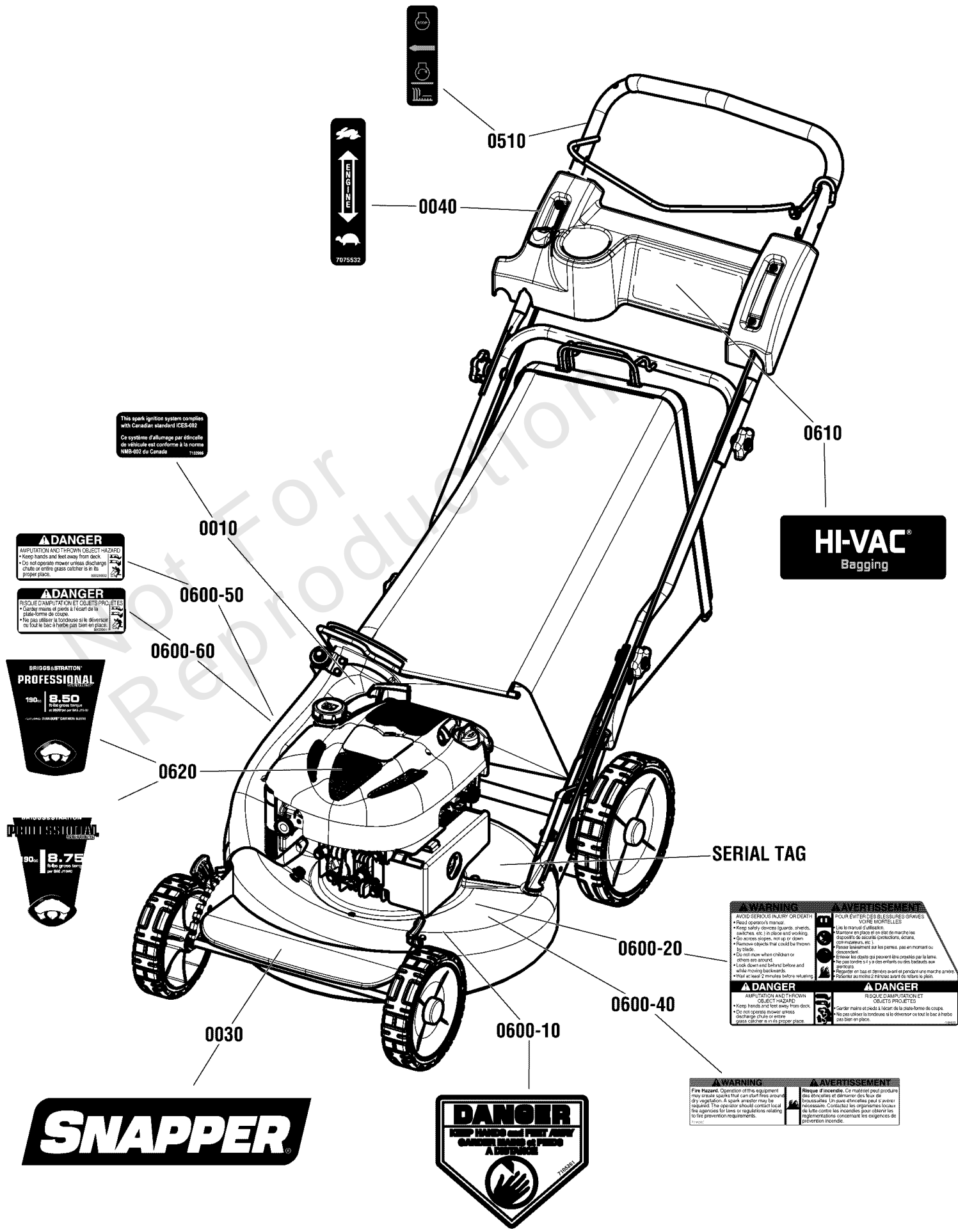
Bag, Discharge & Mulch Group

REF NO	PART NO	QTY	DESCRIPTION
0010	7600117YP	1	KIT, Bag Adapter Assembly, W/pulley (Includes items 6 - 13)
0010-10	-----	1	USE 7600117, Bag Adapter
0010-20	704032	3	RIVET, 3/16 x .344, Truss HD, ZC/CL
0010-30	7024228SM	1	PULLEY, Nylon, .75 ID, 1.3 OD
0010-40	703973	1	BUSHING, Flanged, .381 x .625 x .62, Metal, CZ/CL
0010-50	7047082AYP	1	BRACKET, Rope Pulley
0010-60	703942	3	WASHER, 5/32 Flat, ZC/CL
0010-70	703409	1	NUT, Serrated Lock Flange, 5/16-18
0010-80	703570	1	CAPSCREW, Hex Head, 5/16-18 x 1 1/4
0030	703936	2	WASHER, .325 ID X .850 OD X .041 Thk, Internal External Lock, Type A, ZC/CL
0040	7101022YP	2	KNOB, Fluted (5/16-18 thread) on side chute
0060	7500153YP	1	ASSEMBLY, Grass Bag, Door, No Graphics, 12.5" W, 26.5" L
0060-10	7042489AYP	1	WELDMENT, Bag Connector
0060-20	7051906AYP	1	ASSEMBLY, Bag Wire, 12.25" Wide
0060-30	7100433YP	1	GRASS BAG, Door, No Graphics, 12.5" W, 26.5" L
0070	7016814YP	1	PLUG, Chute Adapter Mulching
0080	7029149YP	1	COVER, Mulching, 21" Deck
0090	7042965YP	1	CHUTE, 21" Side Discharge

Decals

Note: Unless noted otherwise, use the standard torque specifications

Mfg. No: 7800979-00



This spark ignition system complies with Canadian standard ICES-002
Ce système d'allumage par étincelle de véhicule est conforme à la norme NMS-002 du Canada 712096

DANGER
AMPUTATION AND THROWN OBJECT HAZARD
• Keep hands and feet away from deck.
• Do not operate mower unless discharge chute or empty grass catcher is in its proper place.

DANGER
RISQUE D'AMPUTATION ET D'OBJETS PROJÉTÉS
• Garder mains et pieds à l'écart de la plate-forme de coupe.
• Ne pas utiliser la tondeuse si le déversoir ou tout le sac à herbe n'est pas bien en place.

BRIGGS & STRATTON
PROFESSIONAL
190cc
8.50
8.50 HP (6000 RPM)
EQUIVALENT À 6.2 CV (4500 RPM)

BRIGGS & STRATTON
PROFESSIONAL
90cc
8.75
8.75 HP (6000 RPM)
EQUIVALENT À 6.4 CV (4500 RPM)

SNAPPER

DANGER
KEEP HANDS AND FEET AWAY
GARDER MAINS ET PIEDS
À L'ÉCART
712097

WARNING
AVOID SERIOUS INJURY OR DEATH
• Read operator's manual.
• Keep safety devices (guards, shields, parkbrakes, etc.) in place and working.
• Do not exceed speed, set up or down.
• Remove objects that could be thrown by blade.
• Do not mow when children or others are around.
• Lock down and bail out before and while moving backwards.
• Wait at least 2 minutes before refueling.

AVERTISSEMENT
ÉVITER LES BLESSURES GRAVES
VOTRE MORTÉLLES
• Lire le manuel d'utilisation.
• Garder en place et en état de marche les dispositifs de sécurité (protecteurs, écrans, frein moteur, etc.).
• Éviter les objets qui peuvent être projetés par la lame.
• Ne pas moudre si y a des enfants ou des individus aux alentours.
• Réguler en haut et en bas avant de pendre ou marcher arrière.
• Patienter au moins 2 minutes avant de refermer le plein.

DANGER
AMPUTATION AND THROWN OBJECT HAZARD
• Keep hands and feet away from deck.
• Do not operate mower unless discharge chute or empty grass catcher is in its proper place.

DANGER
RISQUE D'AMPUTATION ET D'OBJETS PROJÉTÉS
• Garder mains et pieds à l'écart de la plate-forme de coupe.
• Ne pas utiliser la tondeuse si le déversoir ou tout le sac à herbe n'est bien en place.

WARNING
Fire Hazard. Operation of this equipment may create sparks that can start fires, including dry vegetation. A spark arrester may be required. The operator should consult local fire agencies for laws or regulations relating to fire prevention requirements.

AVERTISSEMENT
Risque d'incendie. Ce matériel peut produire des étincelles et commencer des feux de végétation sèche. Un pare-étincelles peut s'avérer nécessaire. Consultez les organismes locaux de lutte contre les incendies pour obtenir les réglementations concernant les exigences de prévention incendie.

HI-VAC
Bagging

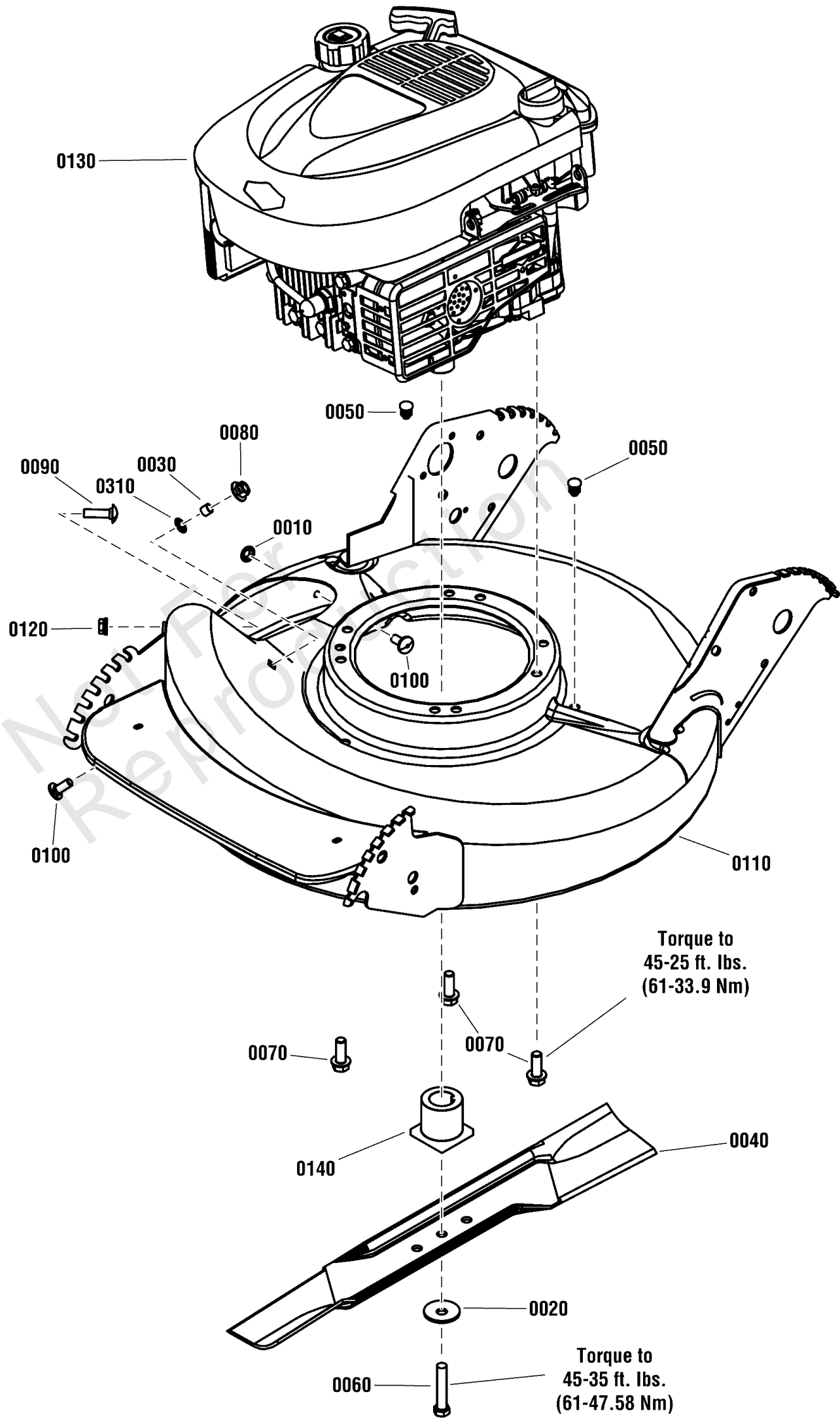
Decals

REF NO	PART NO	QTY	DESCRIPTION
0010	7102996YP	1	DECAL, Compliance, ICES
0030	7104148YP	1	DECAL, Logo, SNAPPER 7.88"
0040	7075532YP	1	DECAL, Throttle Control, B&S
0510	7029782MA	1	DECAL, OPC Bail, INT'L Symbol
0600	7106353YP	1	DECAL, Sheet, WBM Compliance
0600-10	7105261YP	1	DECAL, FR/ENG, CPSC
0600-20	-----	1	DECAL, Warning/Danger, ENG/FRENCH -(Included on Decal Sheet #7106353YP)
0600-40	-----	1	DECAL, Spark Arrestor, ENG/FRENCH -(Included on Decal Sheet #7106353YP)
0600-50	-----	1	DECAL, Danger, English -(Included on Decal Sheet #7106353YP)
0600-60	-----	1	DECAL, Danger, French -(Included on Decal Sheet #7106353YP)
0610	7106322YP	1	DECAL, HI-VAC
0620	709542	1	DECAL, Turtle, 8.5TP
0620	7106319YP	1	DECAL, TURTLE, 8.75TP

Engine Group

Note: Unless noted otherwise, use the standard torque specifications

Mfg. No: 7800979-00



Engine Group

REF NO	PART NO	QTY	DESCRIPTION
0010	703297	1	RETAINER, 5/16 X .625, Push Nut, GR 5, Zinc/Clear
0020	703963	1	WASHER, 13/32x1-13/32" Dia. Cone
0030	7024340SM	1	SPACER, .316 I.D. x .375 O.D. x .310 thick
0040	7026691BZYP	1	BLADE, 21" L, .97" Standard Lift
0050	7046780SM	2	PLUG, Hole, .44" OD
0060	703999	1	SCREW, 3/8-24 X 2, Hex Head Cap, GR5
0070	704000	3	SCREW, 3/8-16 X 1.0, Hex Washer Self-Tap, ZC/CL
0080	704001	1	NUT, 5/16-18 Large Flange Center Lock, ZC/CL
0090	704002	1	BOLT, 5/16-18 X 1.125, Carriage, ZC/CL
0100	703185	2	BOLT, Carriage, 5/16-18 X 3/4
0110	7500549DYP	1	KIT, Deck Weldment, 21", Part Sales, HV, SP, ES (red, w/decals)
0120	703409	1	NUT, Serrated Lock Flange, 5/16-18
0130	-----	1	* ENGINE, B&S 8.75 GT, PRO Model 121S02-0066-F1 -(Used on 7980946-02)
0130	121Q02-0028-F1	1	* ENGINE, B&S 8.5 GT, PRO Model 121Q02-0028-F1 -(Used on 7980079-00)
0140	7015626YP	1	HUB, Blade Drive, .25MM ID
0310	704015	1	WASHER, Flat, 5/16

Not For
Reproduction

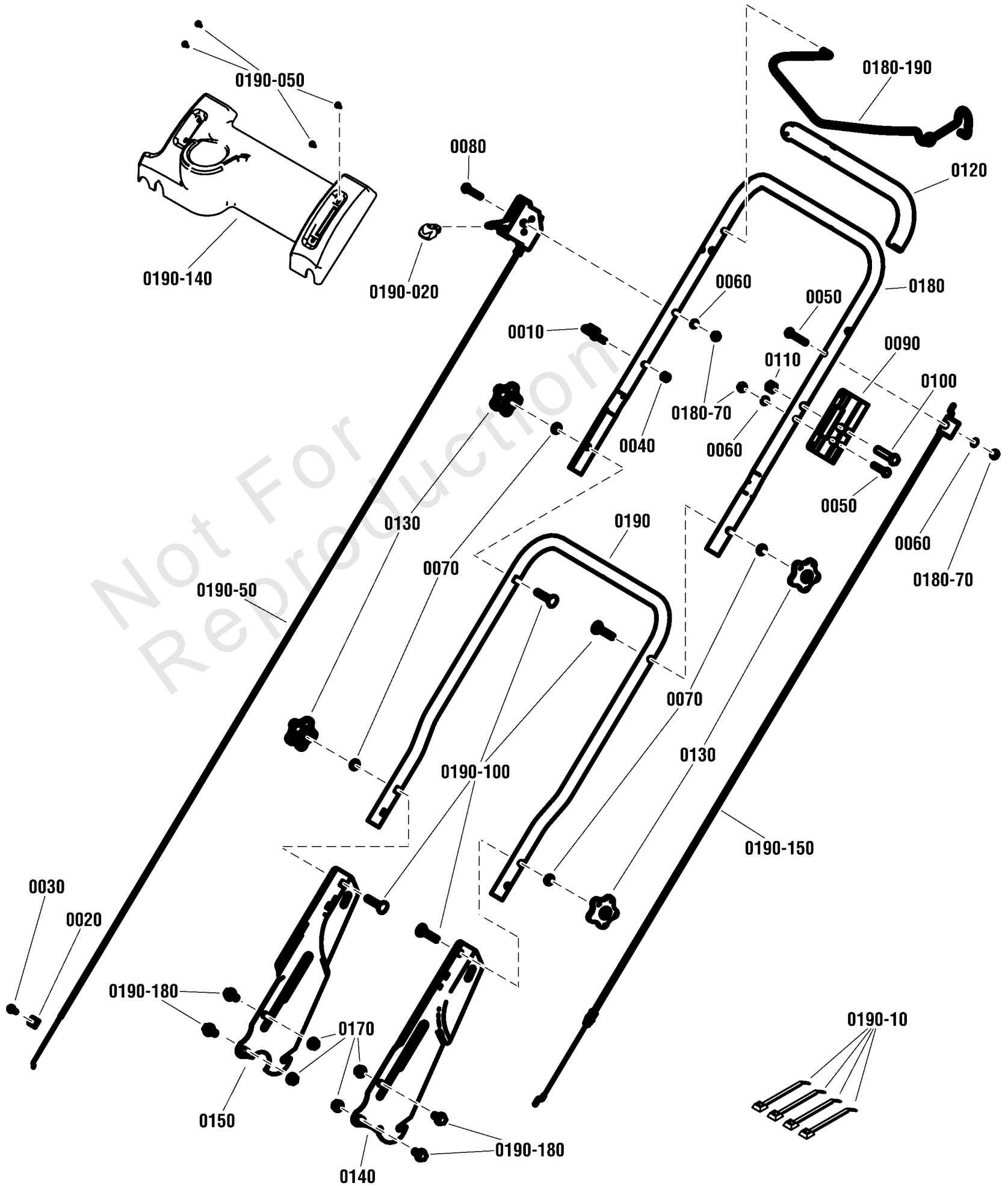
Footnotes:

NOTE: * Purchase engine & engine parts from engine service outlets.

Handle Group

Note: Unless noted otherwise, use the standard torque specifications

Mfg. No: 7800979-00



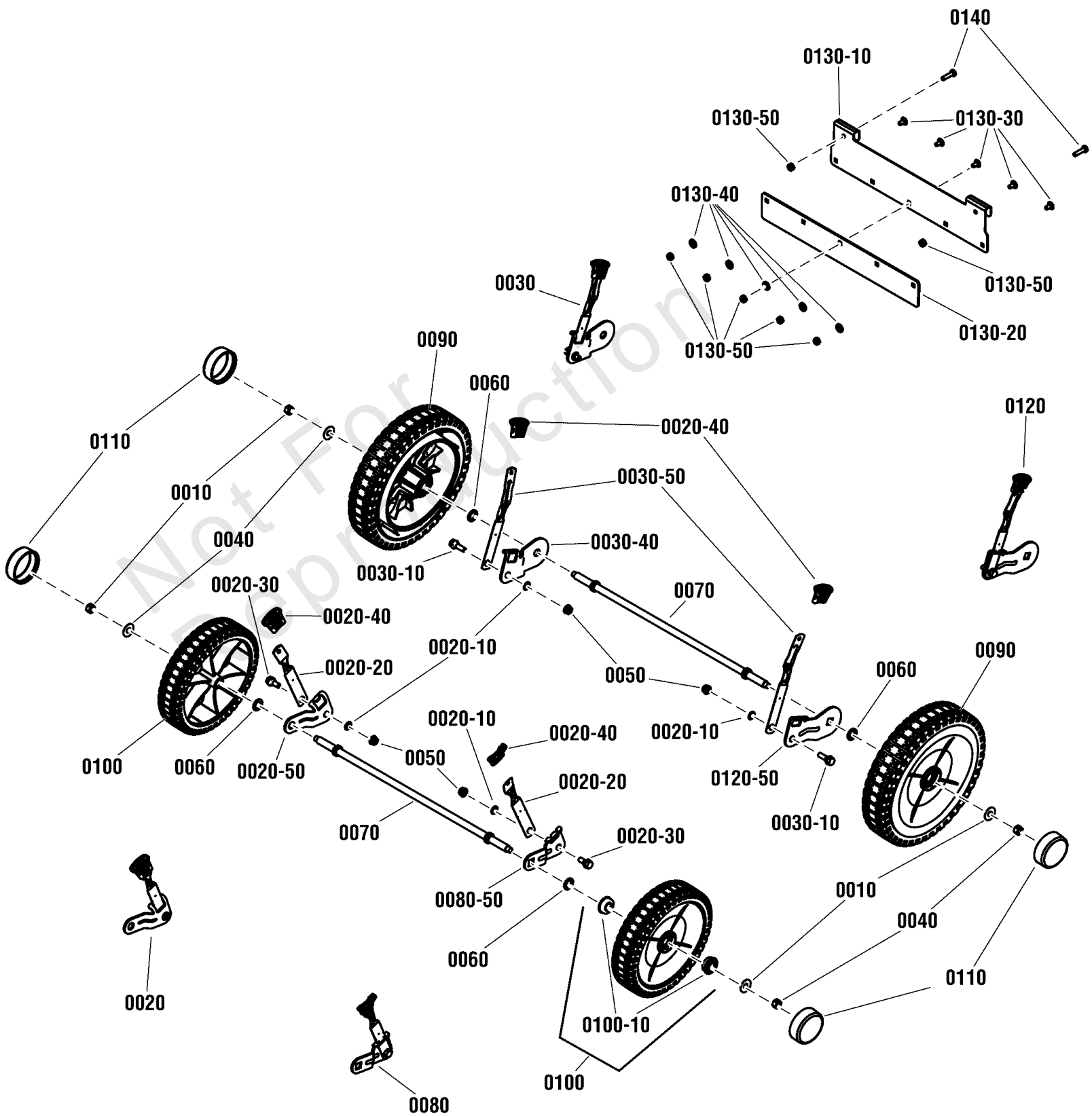
Handle Group

REF NO	PART NO	QTY	DESCRIPTION
0010	7028488MA	1	GUIDE, 1/4-20, Rope, CL/ZC
0020	690798	1	CLAMP, Casing
0030	704324	1	SCREW, #10-32 X .615, Hex Head Cap Slotted, Zinc/Clear
0040	703232	1	NUT, 1/4-20, Nylock, GR A, Zinc/Clear
0050	703234	2	SCREW, 1/4-20 X 1.5, Hex Head Cap, GR5, ZC/CL
0060	703462	3	WASHER, 1/4 Internal Tooth Lock, YZ
0070	703587	4	WASHER, 5/16, Internal Lock, Zinc/Clear
0080	703588	1	SCREW, 1/4-20 X 1.75, GR 5 Zinc/Clear
0090	7074003YP	1	BRACKET, Shift, Black Zinc
0100	703589	1	SCREW, 3/8-16 x 2, Hex Head Cap, GR5, Zinc/Clear
0110	703347	1	NUT, 3/8-16, Hex Center-Lock, GR B, Zinc/Clear
0120	7023810YP	1	FOAM GRIP, 18.75"
0130	7105085YP	4	KNOB, 5 Prong, 5/16-18
0140	7033985AYP	1	HANDLE, Lower, ADJ, LH
0150	7033986AYP	1	HANDLE, Lower, ADJ, RH
0170	703409	4	NUT, Serrated Lock Flange, 5/16-18
0180	7106258AYP	1	HANDLE, Upper, 17.53" Wide, Black
0180-70	703127	3	NUT, 1/4-20, G5 Zinc/Clear
0180-190	7106255AYP	1	BAIL, OPC, Over-the-Top, Black
0190	7106232AYP	1	HANDLE, Middle, Black
0190-10	7024641YP	5	WIRE TIE, 5.5" L
0190-50	7102594YP	1	CONTROL, Throttle, W14, 63.12" L
0190-020	7075308YP	1	KNOB, Throttle, Red
0190-050	703961	4	SCREW, 1/4-20 X .550, T-30 Pan Head Torx, Self-Tapping, Zinc/Clear
0190-100	703059	4	BOLT, 5/16-18 X 2.00 Conical Head, SN ZC/CL
0190-140	7106280YP	1	CONTROL PANEL, Push W/Throttle
0190-150	7106257YP	1	CABLE, OPC, 50.56" Long, Z Ends, Snap-in, for Over-the-Top Bail
0190-180	703354	4	SCREW, Flange, Whiz-Lock, 5/16-18 X 3/4

Wheel Group

Note: Unless noted otherwise, use the standard torque specifications

Mfg. No: 7800979-00



Wheel Group

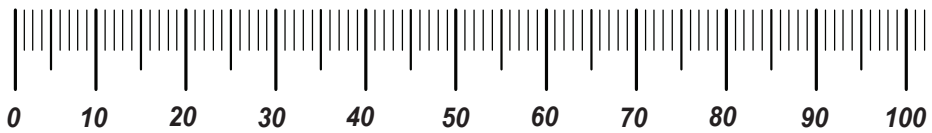
REF NO	PART NO	QTY	DESCRIPTION
0010	703966	4	WASHER, 1 OD x .387 ID, Flat
0020	7600180YP	1	KIT, Front Wheel Arm Assembly, RH
0020-10	703297	4	RETAINER, 5/16 X .625, Push Nut, GR 5, Zinc/Clear
0020-20	7012325YP	2	LATCH, Height
0020-30	703839	2	BOLT, 5/16-18 X .750, Hex Washer Head Shoulder, Zinc/Clear
0020-40	7103793YP	4	GRIP, Height Latch, Black
0020-50	7031017YP	1	WHEEL ARM, Front, Round Hole, RH, Clear
0030	7054228YP	1	ASSEMBLY, Wheel Arm, Right Rear (Round hole) (Push)
0030-10	703840	2	BOLT, 5/16-18 X 1.0, Hex Washer Head .435 Dia. Shoulder, ZC/CL
0030-40	7033776YP	1	WHEEL ARM, Rear R.H. Push Models (round hole) Zinc/Clear
0030-50	7035717YP	2	LATCH, Height Adjusting, (long)
0040	703347	4	NUT, 3/8-16, Hex Center-Lock, GR B, Zinc/Clear
0050	703409	4	NUT, Serrated Lock Flange, 5/16-18
0060	703835	4	WASHER, Shim, .875 x .531 x .060
0070	7100752YP	2	AXLE, Easy Line (20.44" L, 3/8-16 Threads)
0080	7600183YP	1	ASSEMBLY, Front Left Wheel Arm (.512 Square Hole)
0080-50	7011393YP	1	WHEEL ARM, L.H. Front (.512 Square Hole) CZ/CL
0090	7503281	2	ASSEMBLY, Wheel, 10 x 2 Push, BB, Snapper Tread Charcoal Gray
0100	7503282	2	ASSEMBLY, Wheel, 8 X 2 Push w/Bearings, Gray
0100-10	7101380YP	8	BALL BEARING, Flange, 1-1/8 O.D. (Not Shown)
0110	7106302YP	4	HUBCAP, Round, 1.7" OD, Gray
0120	7600175YP	1	KIT, Wheel Arm Assembly, Left Rear Long (Push)
0120-50	7102587YP	1	WHEEL ARM, Rear, LH, Clear Zinc
0130-10	709674	1	SHIELD
0130-20	709675	1	SHIELD, Rubber
0130-30	703978	5	BOLT, 1/4-20 X 1/2, Carriage, GR5 YZ
0130-40	703332	5	WASHER, Flat, 1/4
0130-50	703251	7	NUT, 1/4-20, GR5, Hex Center Lock, Zinc/Clear
0140	703820	2	SCREW, 1/4-20 X 1.0, GR5, YZ, Hex Head Cap

Hardware Identification & Torque Specifications

Torque Specification Chart								
FOR STANDARD METRIC MACHINE HARDWARE (Tolerance ± 20%)								
Property Class	5.6		8.8		10.9		12.9	
	Class 5.6		Class 8.8		Class 10.9		Class 12.9	
Size Of Hardware	in/lbs	Nm.	in/lbs	Nm.	in/lbs	Nm.	in/lbs	Nm.
	ft/lbs		ft/lbs		ft/lbs		ft/lbs	
M3	5.88	.56	13.44	1.28	19.2	1.80	22.92	2.15
M4	13.44	1.28	30.72	2.90	43.44	4.10	52.56	4.95
M5	26.4	2.50	60.96	5.75	5.97	8.10	7.15	9.7
M6	44.64	4.3	7.3	9.9	10.3	14	12.1	16.5
M7	5.2	7.1	12.1	16.5	16.9	23	19.9	27
M8	7.7	10.5	17.7	24	25	34	29	40
M10	15	21	35	48	50	67	59	81
M12	26	36	61	83	86.2	117	103	140
M14	42	58	101	132	136	185	162	220
M16	64	88	147	200	210	285	250	340
M18	89	121	202	275	287	390	346	470
M20	126	171	290	390	405	550	486	660
M22	169	230	390	530	559	745	656	890
M24	217	295	497	375	708	960	840	1140
M27	320	435	733	995	1032	1400	1239	1680
M30	435	590	995	1350	1401	1900	1681	2280
M33	590	800	1349	1830	1902	2580	2278	3090
M36	759	1030	1740	2360	2441	3310	2935	3980
M39	988	1340	2249	3050	3163	4290	3798	5150

Torque Specification Chart						
FOR STANDARD MACHINE HARDWARE (Tolerance ± 20%)						
Hardware Grade	No Marks		SAE Grade 5		SAE Grade 8	
	SAE Grade 2		SAE Grade 5		SAE Grade 8	
Size Of Hardware	in/lbs	Nm.	in/lbs	Nm.	in/lbs	Nm.
	ft/lbs		ft/lbs		ft/lbs	
8-32	19	2.1	30	3.4	41	4.6
8-36	20	2.3	31	3.5	43	4.9
10-24	27	3.1	43	4.9	60	6.8
10-32	31	3.5	49	5.5	68	7.7
1/4-20	66	7.6	8	10.9	12	16.3
1/4-28	76	8.6	10	13.6	14	19.0
5/16-18	11	15.0	17	23.1	25	34.0
5/16-24	12	16.3	19	25.8	29	34.0
3/8-16	20	27.2	30	40.8	45	61.2
3/8-24	23	31.3	35	47.6	50	68.0
7/16-14	30	40.8	50	68.0	70	95.2
7/16-20	35	47.6	55	74.8	80	108.8
1/2-13	50	68.0	75	102.0	110	149.6
1/2-20	55	74.8	90	122.4	120	163.2
9/16-12	65	88.4	110	149.6	150	204.0
9/16-18	75	102.0	120	163.2	170	231.2
5/8-11	90	122.4	150	204.0	220	299.2
5/8-18	100	136	180	244.8	240	326.4
3/4-10	160	217.6	260	353.6	386	525.0
3/4-16	180	244.8	300	408.0	420	571.2
7/8-9	140	190.4	400	544.0	600	816.0
7/8-14	155	210.8	440	598.4	660	897.6
1-8	220	299.2	580	788.8	900	1,244.0
1-12	240	326.4	640	870.4	1,000	1,360.0

The guides and ruler furnished below are designed to help you select the appropriate hardware.

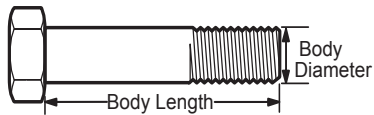


Nut, M8

Thread Diameter (mm)

Inside Diameter (in) Threads per inch

Nut, 1/2-16

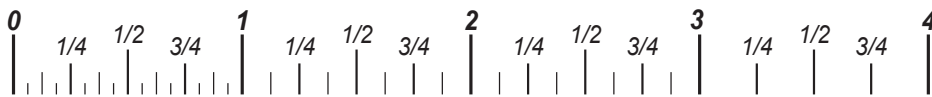


Screw, M8- 1.25 x 25

Thread Diameter (mm) Distance between threads (mm) Body Length (mm)

Body Diameter Threads per inch Body Length (in)

Screw, 1/2- 16 x 2



Standard Hardware Sizing

When a washer or nut is identified as 1/2" (M8), this is the *Nominal size*, meaning the *inside diameter* is 1/2 inch (8mm metric thread diameter); if a second number is present it represents the *threads per inch* (distance between threads).

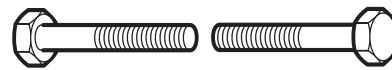
When bolt or capscrew is identified as 1/2 - 16 x 2" (M8 - 1.25 x 50), this means the *Nominal size*, or body diameter is 1/2 inch (8mm metric thread diameter), the second number, 16, represents the *threads per inch*, (*distance between threads*). The final number is the body length of the bolt or screw, 2 inches (50mm).

NOTES

- These torque values are to be used for all hardware excluding: locknuts, self-tapping screws, thread forming screws, sheet metal screws and socket head setscrews.
- Recommended seating torque values for locknuts:
 - for prevailing torque locknuts - use 65% of grade 5 torques.
 - for flange whizlock nuts and screws - use 135% of grade 5 torques.
- Unless otherwise noted on assembly drawings, all torque values must meet this specification.

Common Hardware Types

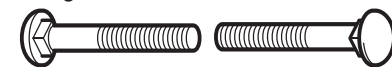
Hex Head Capscrew



Washer



Carriage Bolt



Hex Nut

Wrench & Fastener Size Guide

1/4" Bolt or Nut Wrench—7/16"	5/16" Bolt or Nut Wrench—1/2"	3/8" Bolt or Nut Wrench—9/16"	7/16" Bolt or Nut Wrench (Bolt)—5/8" Wrench (Nut)—11/16"	1/2" Bolt or Nut Wrench—3/4"
M6 Bolt or Nut Wrench—10mm	M8 Bolt or Nut Wrench—13mm	M10 Bolt or Nut Wrench—17mm	M12 Bolt or Nut Wrench—19mm	M14 Bolt or Nut Wrench—22mm

