



# Parts Manual

Mfg. No: 7800601  
NP217020B, 21" 7 TP Steel Deck  
California Series 20



---

| <b>Model Components</b>                        | <b>Page</b> |
|--|-------------|
| Accessory Recycling Kits.....                  | 4           |
| Accessory Snapperizer.....                     | 6           |
| Decals.....                                    | 8           |
| Drive System Self-Propelled.....               | 10          |
| Engine, Cutting Deck & Blade.....              | 14          |
| Grass Bag Components.....                      | 18          |
| Handles & Controls.....                        | 20          |
| Side Chute, Adapter.....                       | 24          |
| Transmission (Differential).....               | 26          |
| Wheel Brackets & Latches (Self-Propelled)..... | 28          |
| Wheels Front and Rear.....                     | 30          |
| Torque Specification Chart.....                | 32          |

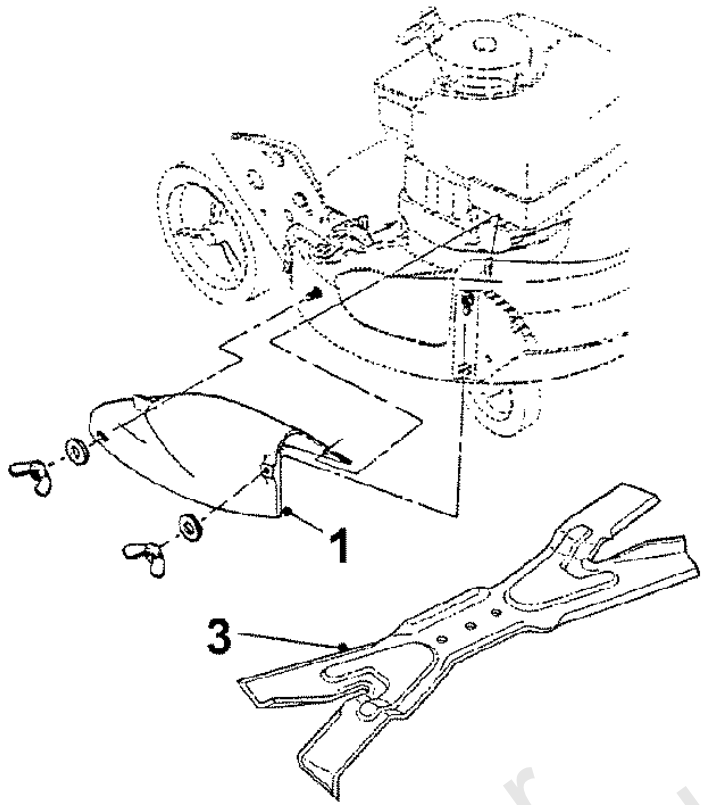
Not For  
In Reproduction

# Accessory Recycling Kits

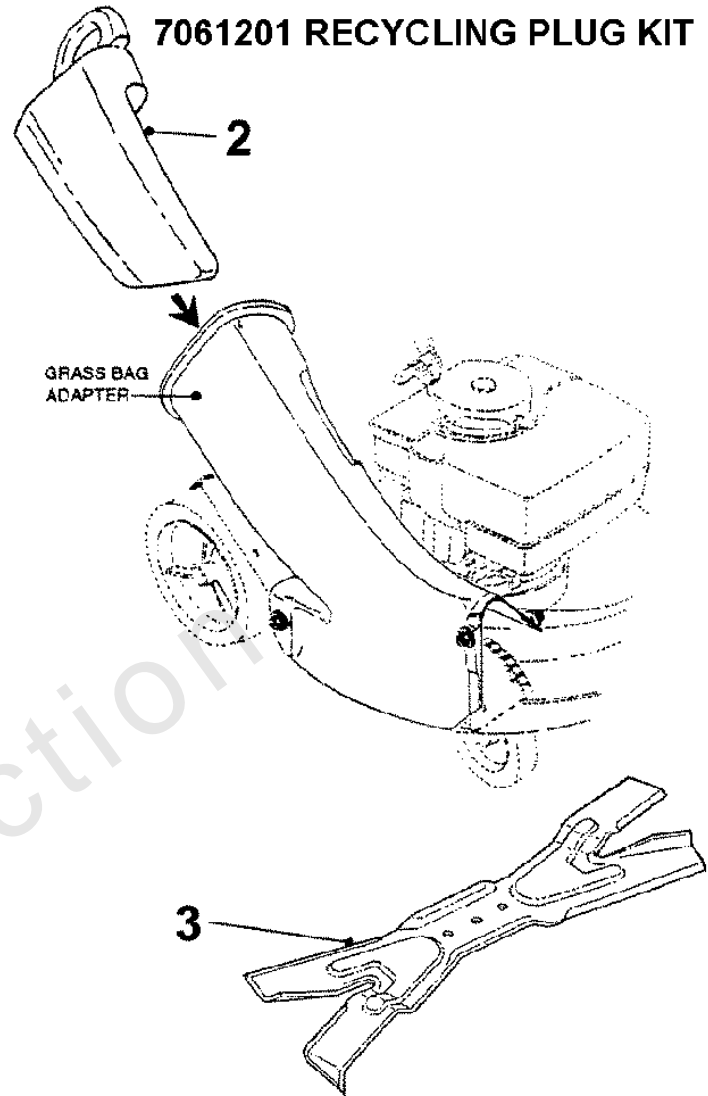
Note: Unless noted otherwise, use the standard torque specifications

Mfg. No: 7800601

## 7061200 RECYCLING COVER KIT



## 7061201 RECYCLING PLUG KIT



Not For  
InReproduction

## Accessory Recycling Kits

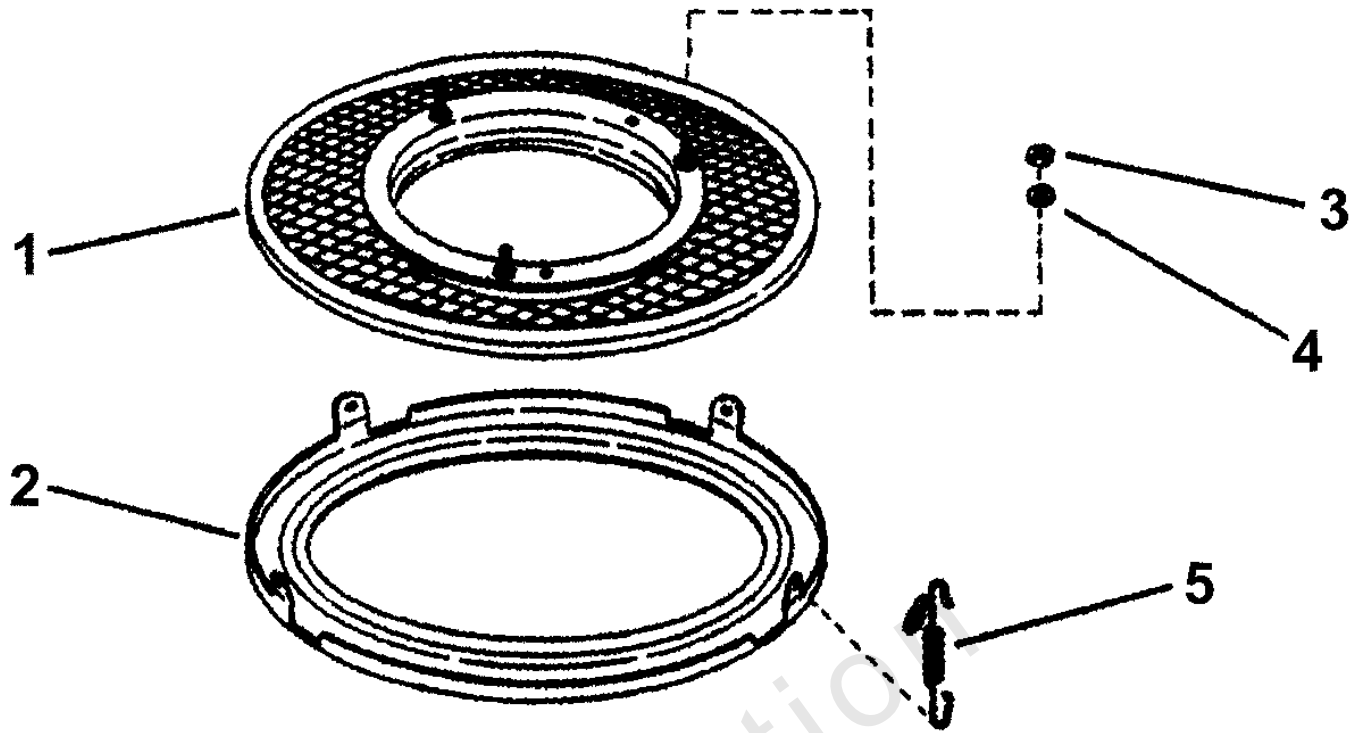
| REF NO | PART NO | QTY | DESCRIPTION   |
|--------|---------|-----|---|
| --     | 7061200 |     | KIT, Recycling Cover (Includes items 1 & 3 shown below)<br>-(for 4HP & above engines) |
| --     | 7061201 |     | KIT, Recycling Plug (Incl. items 2 & 3 shown below)<br>-(for 4HP & above engines)     |
| 1      | 7029149 | 1   | COVER, 21" Deck   |
| 2      | 7016814 | 1   | PLUG, Chute Adapter   |
| 3      | 7026407 | 1   | BLADE, 21" Quad Edge Ninja  |

Not For InReproduction

# Accessory Snapperizer

Note: Unless noted otherwise, use the standard torque specifications

Mfg. No: 7800601

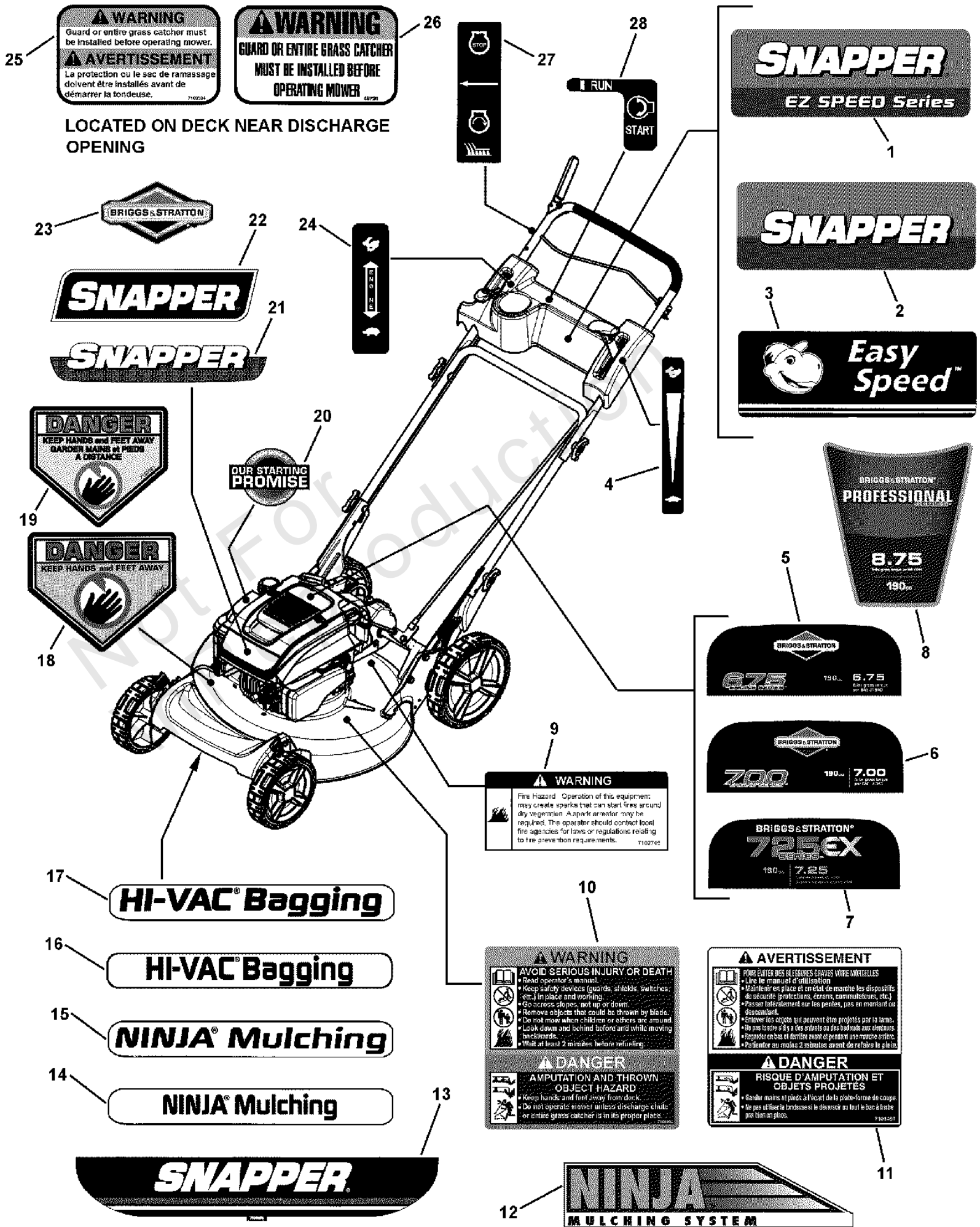


Not For  
In Reproduction

## Accessory Snapperizer

| REF NO | PART NO | QTY | DESCRIPTION  |
|--------|---------|-----|--|
| --     | 7063041 |     | KIT, Snapperizer (Incl. items 1 thru 5)<br>-(for "FR" & "M" type outlip decks) |
| 1      | 7051243 | 1   | SCREEN, Fastener Assembly  |
| 2      | 7072002 | 1   | RING, Bottom (22.60" Inside Diameter)  |
| 3      | 7091297 | 3   | NUT, 5/16-24 Hex, GR 5   |
| 4      | 7090187 | 3   | WASHER, 5/16" Split Lock   |
| 5      | 7012587 | 3   | SPRING   |

Not For In Reproduction





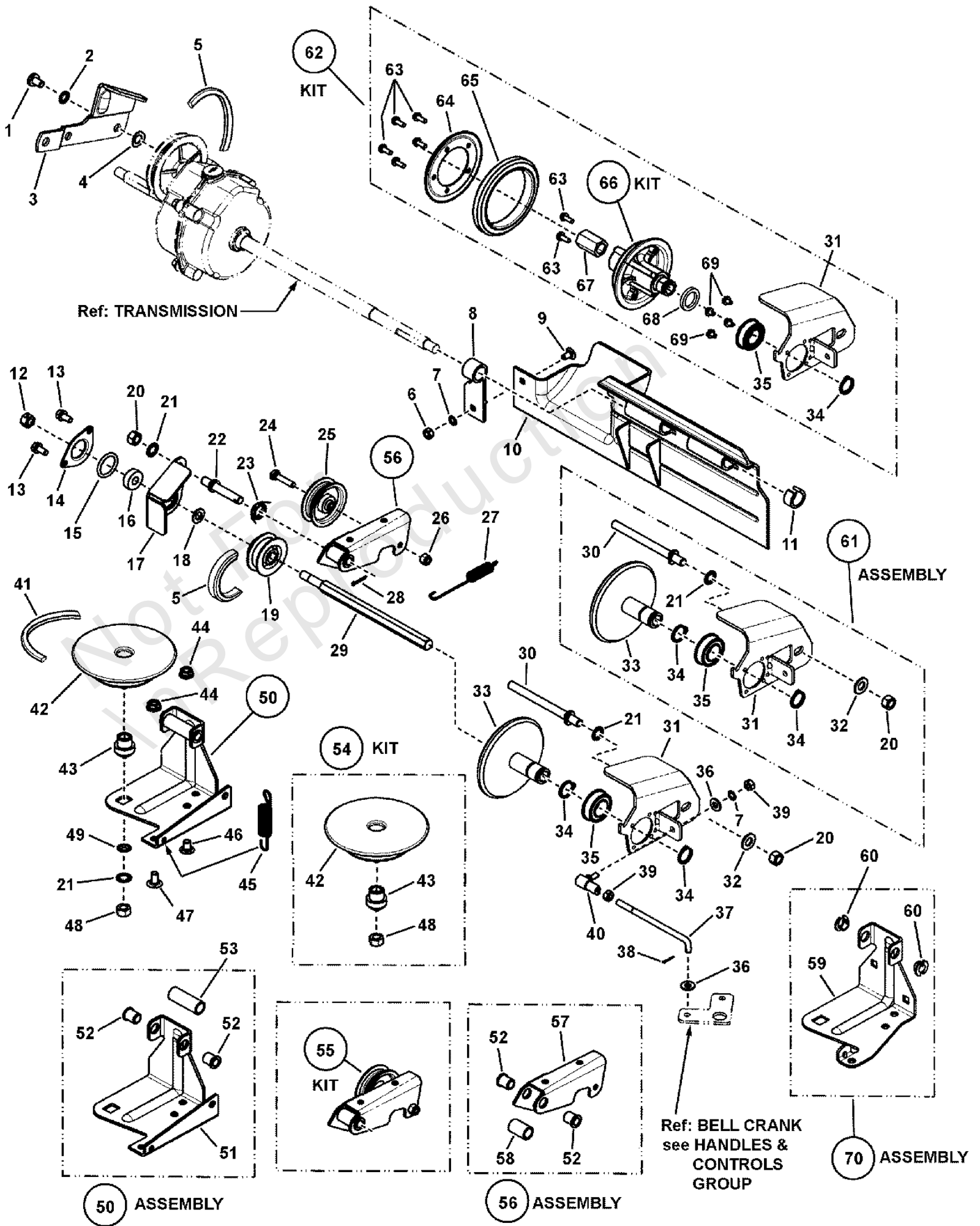
## Decals

| REF NO | PART NO   | QTY | DESCRIPTION  |
|--------|-----------|-----|--|
| 1      | 7102940   | 1   | DECAL, Easy Speed, Control Panel                                     |
| 2      | 7102974   | 1   | DECAL, Snapper Control Panel   |
| 3      | 7100183   | 1   | DECAL, Easy Speed, Control Panel                                     |
| 4      | 7075471   | 1   | DECAL, Speed Shift   |
| 5      | 7102151   | 1   | DECAL, Briggs Engine, 675 Series                                     |
| 6      | 7103682   | 1   | DECAL, Briggs Engine, 700 Series                                     |
| 6      | 7104852   | 1   | DECAL, Briggs Engine, 700 Series (Not Shown but Similar to #6 above) |
| 7      | 7105198   | 1   | DECAL, 725 Series  |
| 8      | 278401    | 1   | DECAL, Briggs Engine 8.75T/190cc Professional Series                 |
| 9      | 7102746   | 1   | DECAL, Spart Arrestor  |
| 10     | 7100984   | 1   | DECAL, Warning/Danger Walk-Behind Mowers                             |
| 11     | 7101497   | 1   | DECAL, Warning/Danger, French/English                                |
| 12     | 7100410   | 1   | DECAL, NINJA Mulching System   |
| 13     | 7100185   | 1   | DECAL, SNAPPER, Steel Decks  |
| 14     | 7104851   | 1   | DECAL, Ninja Mulching, Front Cover                                   |
| 15     | 7102939   | 1   | DECAL, Front Cover, Ninja Mulching System                            |
| 16     | 7104853   | 1   | DECAL, Front Cover, Hi-Vac   |
| 17     | 7102938   | 1   | DECAL, Front Cover, Hi-Vac   |
| 18     | 7013010   | 1   | DECAL, Danger, Cut Finger  |
| 19     | 7105261   | 1   | DECAL, French/English, CPSC  |
| 20     | 277878    | 1   | LABEL, Starting Promise  |
| 21     | 7102153   | 1   | DECAL, Briggs Engine, Snapper  |
| 22     | 7104148   | 1   | DECAL, Logo, Snapper, 7.88 long                                      |
| 23     | 274040    | 1   | LABEL, Briggs & Stratton Logo  |
| 24     | 7075532   | 1   | DECAL, Throttle Control, B&S   |
| 25     | 7102324   | 1   | DECAL, Chute/Deflector, French Canadian                              |
| 26     | 7046720   | 1   | DECAL, Chute/Deflector   |
| 27     | 7029782   | 1   | DECAL, OPC Bail (International Symbol)                               |
| 28     | 7075688YP | 1   | DECAL, Ignition Switch   |
| --     | 7102996   | 1   | DECAL, Canadian Spark Compliance, ICES (Not Shown)                   |

# Drive System Self-Propelled

Note: Unless noted otherwise, use the standard torque specifications

Mfg. No: 7800601



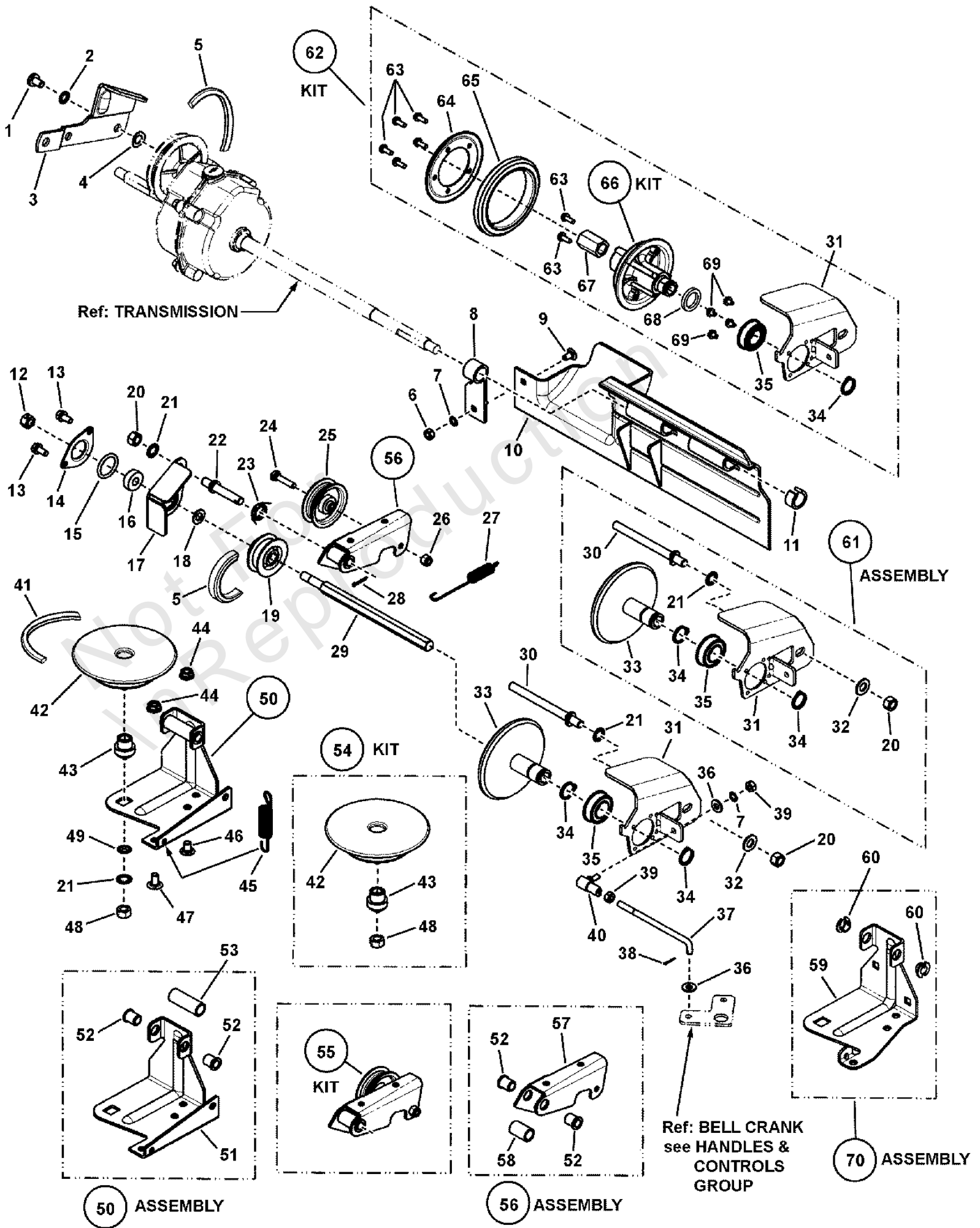
## Drive System Self-Propelled

| REF NO | PART NO  | QTY | DESCRIPTION  |
|--------|----------|-----|--|
| 1      | 7091542  | 1   | SCREW, 5/16-18 x 1/2" Pan Head Self-Tap (Torx)                       |
| 2      | 7090391  | 1   | WASHER, 5/16" Internal Tooth Lock                                    |
| 3      | 7034179A | 1   | LINK, Differential (Comm.)   |
| 4      | 7011724  | 1   | WASHER, 44 x .78 x .025 Curved                                       |
| 5      | 7012354  | 1   | BELT, Poly-V   |
| 6      | 7091576  | 1   | NUT, 1/4-20 Hex, GR 5<br>-(was 7090063)                              |
| 7      | 7090053  | 1   | WASHER, 1/4" Internal Tooth Lock<br>-(was 7091023)                   |
| 8      | 7012616  | 1   | SUPPORT, Foot Guard  |
| 9      | 7091604  | 1   | BOLT, 1/4-20 x 1/2" Short Neck Carriage GR 5<br>-(was 7090005)       |
| 10     | 7029008  | 1   | FOOT GUARD, Rear   |
| 11     | 7023791  | 1   | RING, Split (Black)  |
| 12     | 7090289  | 1   | NUT, 3/8-24 Hex Center Lock, GR 5                                    |
| 13     | 7091122  | 2   | SCREW, 1/4-20 x 1/2" Hex Flange Self-Tap<br>-(was 7090539)           |
| 14     | 7031809  | 1   | HOLDER, Bearing (Outer Half)   |
| 15     | 7011025  | 1   | O-RING, V21  |
| 16     | 7028014  | 1   | BALL BEARING, Spherical O.D., .38 I.D.                               |
| 17     | 7031873  | 1   | HOLDER, Bearing (Inner Half)   |
| 18     | 7012316  | 1   | WASHER, .390 I.D. Flat   |
| 19     | 7019383  | 1   | PULLEY, Poly-V (2" O.D.)<br>-(Was 7024521)                           |
| 20     | 7091630  | 2   | NUT, 3/8-24 Hex  |
| 21     | 7090390  | 3   | WASHER, 3/8" Internal Tooth Lock                                     |
| 22     | 7012111  | 1   | STUD, Idler (3/8-24 thread)  |
| 23     | 7012126  | 1   | SPRING, Idler- Torsion   |
| 24     | 7091025  | 1   | SCREW, 1/4-28 x 1-3/8" Hex Head Cap, GR 5                            |
| 25     | 7012124  | 1   | PULLEY, Idler, V21   |
| 26     | 7090303  | 1   | NUT, 1/4-28 Hex Top Lock   |
| 27     | 7012122  | 1   | SPRING, Clutch - 21S   |
| 28     | 7091597  | 1   | COTTER PIN, 3/32 x 1/2"<br>-(was 7090555)                            |
| 29     | 7072284  | 1   | SHAFT, Hex Drive   |
| 30     | 7012125  | 1   | GUIDE, Thrust Plate (3/8-24 thread)                                  |
| 31     | 7300977A | 1   | THRUST PLATE, Short<br>-(was 7034281)                                |
| 32     | 7090122  | 1   | WASHER, 3/8" Flat  |
| 33     | 7041855  | 1   | DISC, Driven (Cantilever)<br>-(ref: 7074139, Driven Disc Ass'y)      |
| 34     | 7010746  | 2   | RETAINING RING, .625 External  |
| 35     | 7026693  | 1   | BALL BEARING, 3/4" Bore<br>-(was 7029027)                            |
| 36     | 7091294  | 1   | WASHER, .28 x .63 x .06 Flat   |
| 37     | 7074145  | 1   | LINK, Transfer (1/4-28 thread)                                       |
| 38     | 7090673  | 1   | COTTER PIN, .06 x .50 YZ<br>-(was 7091629)                           |
| 39     | 7090095  | 2   | NUT, 1/4-28 Hex<br>-(see Handles & Controls page (item 58))          |
| 40     | 7015753  | 1   | BALL JOINT, 1/4-28<br>-(also shown on Handles & Controls Group page) |
| 41     | 7046784  | 1   | BELT, Engine Drive (Stretch)   |
| 42     | 7073528  | 1   | DRIVE DISC, Steel  |
| 43     | 7013893  | 1   | BUSHING, Powdered Metal (used for 1992 and earlier models)           |

# Drive System Self-Propelled

Note: Unless noted otherwise, use the standard torque specifications

Mfg. No: 7800601



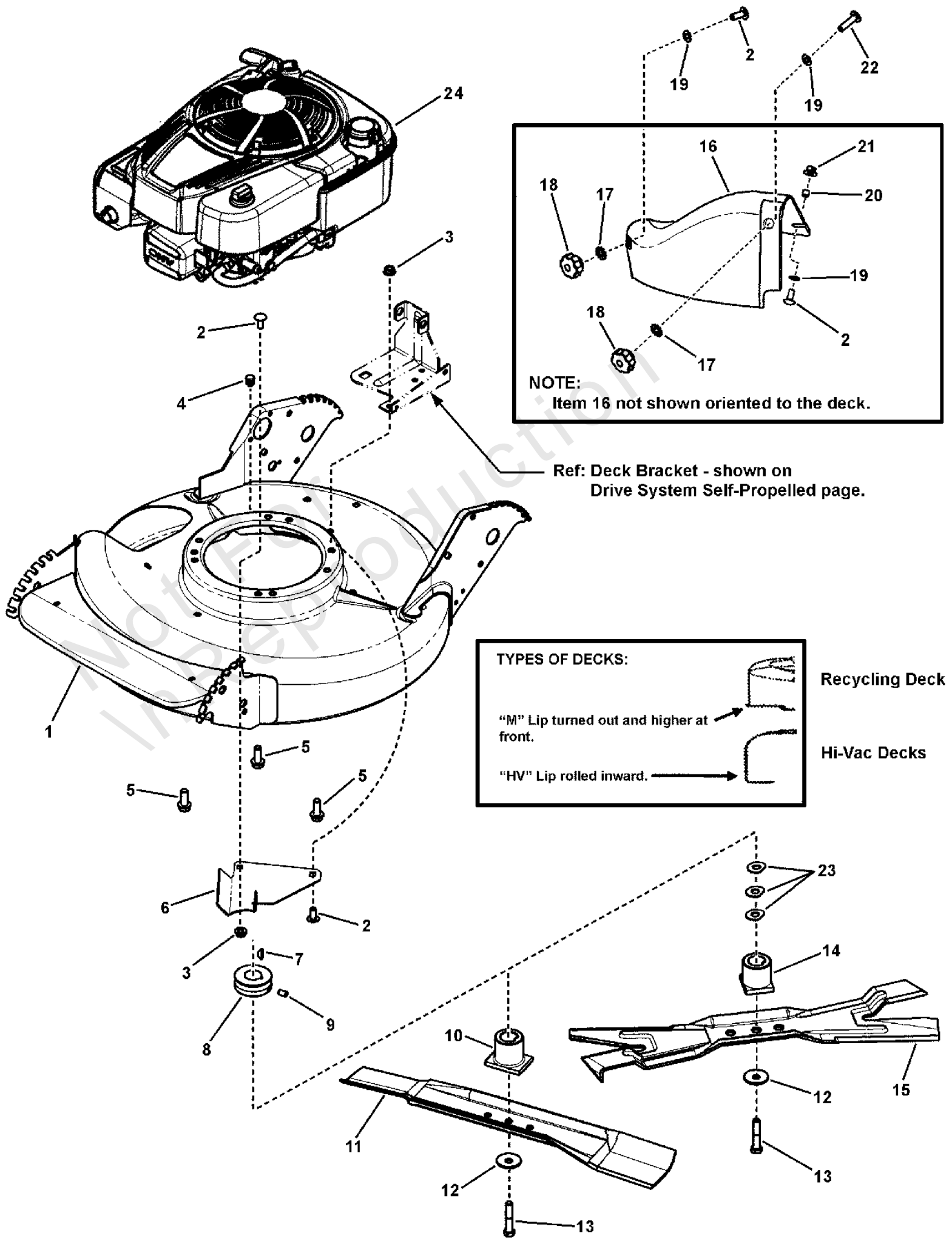
## Drive System Self-Propelled

| REF NO | PART NO  | QTY  | DESCRIPTION  |
|--------|----------|------|--|
| 43     | 7017696  | 1    | BUSHING, Powdered Metal (used for 1993 and later models)   |
| 44     | 7090585  | 4    | NUT, 5/16-18 Hex Flange Lock, GR 5 ZP<br>-(or 7091601)   |
| 45     | 7029025  | 1    | SPRING, Wheel Drive  |
| 46     | 7090731  | 1    | BOLT, 5/16-18 x 1/2", Short Neck Carriage, GR 5  |
| 47     | 7090799  | 1    | BOLT, 5/16-18 x 5/8" Short Neck Carriage GR 5<br>-(was 7091026)  |
| 48     | 7091302  | 1    | NUT, 3/8-16 Hex  |
| 49     | 7013847  | 1    | RETAINER, 3/8" Bolt  |
| 50     | 7052987A | 1    | ASSEMBLY, Deck Bracket (Incl. items 51, 52 & 53)   |
| 51     | 7033774  | 1    | BRACKET, Deck, P21S  |
| 52     | 7012306  | 2, 4 | BUSHING, Flange, .381 x .625 x .62   |
| 53     | 7021758  | 1    | SPACER, .500 x .65 x 1.75  |
| 54     | 7061275  |      | KIT, Drive Disc Assembly (Includes Items 42, 43 & 48)  |
| 55     | 7051913  | 1    | ASSEMBLY, Clutch Idler (Includes Items 24, 25, 26 & 56)  |
| 56     | 7500154  | 1    | ASSEMBLY, Idler Arm (Includes Items 52, 57 & 58)   |
| 57     | 7032832  | 1    | ARM, Clutch Idler  |
| 58     | 7100447  | 1    | SPACER, Idler Arm  |
| 59     | 7031919  | 1    | BRACKET, Deck - NLA ALONE (use Item 70 (59 & 60) or Item 50 (51, 52 & 53))                             |
| 60     | 7012117  | 4    | BUSHING, 3/8" I.D. Nylon   |
| 61     | 7074139  | 1    | ASSEMBLY, Driven Disc (includes items 20, 21, & 30 thru 35)  |
| 62     | 7600109  | 1    | ASS'Y, Driven Disc, Short, Commercial (Incl. same items as Kit 7061276 plus items 20, 21, 30 & 32)     |
| --     | 7501000  |      | ASS'Y, Driven Disc- Commercial (can be used instead of items 20, 21, 30, 31, 32, 33, 34, 35 & 71)      |
| 63     | 7090913  | 7    | SCREW, #10-24 x 1/2" Hex Washer Self-Tap (Torx)  |
| 64     | 7031013  | 1    | SIDE PLATE, Drive Tire   |
| 65     | 7023364  | 1    | DRIVEN RING (was 7010927)  |
| 66     | 7061276  | 1    | KIT, Hub & Bushing (Incl. Items 20, 21, 30, 31, 32, 34, 35, 63, 64, 65, 67, 68 & 69)<br>-(was 7053217) |
| 67     | 7011108  | 1    | BUSHING, Drive, Hex  |
| 68     | 7010121  | 1    | WASHER, Shim, .75 x 1.0 x .021   |
| 69     | 7090981  | 4    | SCREW, #10-32 x 1/4" Hex Washer Self-Tap   |
| 70     | 7059462  | 1    | ASSEMBLY, Deck Bracket (Incl. items 59 & 60)   |
| 71     | 7501961  | 1    | ASSEMBLY, Thrust Plate & Bearing (includes items 31 & 35)  |
| 72     | 7051921  | 1    | ASSEMBLY, Clutch Idler (Includes Items 24, 25, 26, 52 & 57)  |

# Engine, Cutting Deck & Blade

Note: Unless noted otherwise, use the standard torque specifications

Mfg. No: 7800601



## Engine, Cutting Deck & Blade

| REF NO | PART NO        | QTY | DESCRIPTION  |
|--------|----------------|-----|--|
| 1      | 7500081        | 1   | WELDMENT, Deck, 21 Non-Adjust Air (red, w/o decals)<br>-(used on R (recycling) models)                     |
| 1      | 7400029        | 1   | WELDMENT, Deck, 21 Push, HV, Core Model (red, w/o decals)<br>-(used on 7800428 & 7800437 (push) models)    |
| 1      | 7500549        | 1   | WELDMENT, Deck, Part Sales, Hi-Vac, ES (red, w/decals)<br>-(used on self-propelled (non-recycling) models) |
| 2      | 7091508        | 2   | BOLT, 5/16-18 x 3/4 Short Neck Carriage GR 5<br>-(was 7090001)   |
| 3      | 7091601        | 2   | NUT, 5/16-18 Hex Flange Lock, GR 5<br>-(was 7091070)   |
| 4      | 7046780        | 2   | PLUG, Hole, Polyethylene   |
| 5      | 7090324        | 3   | SCREW, 3/8-16 x 1 Self-Tapping<br>-(engine mount bolts)  |
| 6      | 7074568        | 1   | COVER, Belt  |
| 7      | 7091214        | 1   | KEY, Woodruff #HP-506 Hi-Pro   |
| 8      | 7105122        | 1   | PULLEY, Engine (25mm I. D. x 2-1/8 O.D.)<br>-(was 7015780)   |
| 9      | 7090201        | 1   | SET SCREW, 5/16-18 x 5/16 Hex Socket<br>-(or 7092086 (SET SCREW, 5/16-18 x 1/2 Hex Recess))                |
| 10     | 7101414        | 1   | HUB, Blade, 21 WBM, RD, 2 Position   |
| 11     | 7026691        | 1   | BLADE, 21 Standard Lift  |
| 12     | 7012063        | 2   | WASHER, Cone 3/8"  |
| 13     | 7090167        | 1   | SCREW, 3/8-24 x 2 Hex Head Cap, GR 5   |
| 14     | 7015626        | 1   | HUB, Blade Drive, 25 mm I.D.   |
| 15     | 7026407        | 1   | BLADE, 21 Ninja (Quad Edge)<br>-(Used on Recycling Models)   |
| 16     | 7029149        | 1   | COVER, 21 Deck   |
| 17     | 7090189        | 2   | WASHER, 5/16 Internal/External Lock  |
| 18     | 7101022        | 2   | KNOB, Fluted, 5/16-18 x 1/2"   |
| 19     | 7011791        | 1   | RETAINER, 5/16 Bolt  |
| 20     | 7024340        | 1   | SPACER, .316 ID x .375 OD x .310 thick   |
| 21     | 7090951        | 1   | NUT, 5/16-18 Hex Large Flange Center Lock  |
| 22     | 7091169        | 1   | BOLT, 5/16-18 x 1-1/8 Round Head Short Square Neck, GR 5, ZP   |
| 23     | 7044770        | 3   | SPACER, Blade Hub<br>-(Used on 7800427)  |
| 24     | 100602-0155-B8 | 1   | * ENGINE, B&S DOV 700 Series<br>-(used on 7800424 (RP217020BDV))   |
| 24     | 121Q72-0110-F1 | 1   | * ENGINE, B&S 875 Professional Series, California Compliant<br>-(used on 7800692 (NP2187520))              |
| 24     | 121S72-0111-F1 | 1   | * ENGINE, 875 Series, California Compliant<br>-(used on 7800771)   |
| 24     | 121S72-0132-F1 | 1   | * ENGINE, B&S, 875 Series, S-Spec, 50 ST/FC<br>-(used on 7800843 & 7800846)                                |
| 24     | 121S77-0133-F1 | 1   | * ENGINE, B&S, 875 Series, W14 w/oil fltr<br>-(used on 7800844)  |
| 24     | 126L02-4113-F1 | 1   | * ENGINE, B&S 675 Series<br>-(used on 7800437 & 7800438)   |
| 24     | 126T02-0267-B1 | 1   | * ENGINE, B&S 675 Series<br>-(used on 7800428 & 7800429)   |
| 24     | 128L02-0114-F1 | 1   | * ENGINE, B&S 700 Series, California Compliant<br>-(used on 7800600 & 7800601)                             |
| 24     | 128M02-0412-F1 | 1   | * ENGINE, B&S, 725 Series, 50 ST/FC<br>-(used on 7800841, 7800842 & 7800845)                               |
| 24     | 128T02-0112-B1 | 1   | * ENGINE, B&S 700 Series, Quantum, 49 ST<br>-(used on 7800596 & 7800602)                                   |

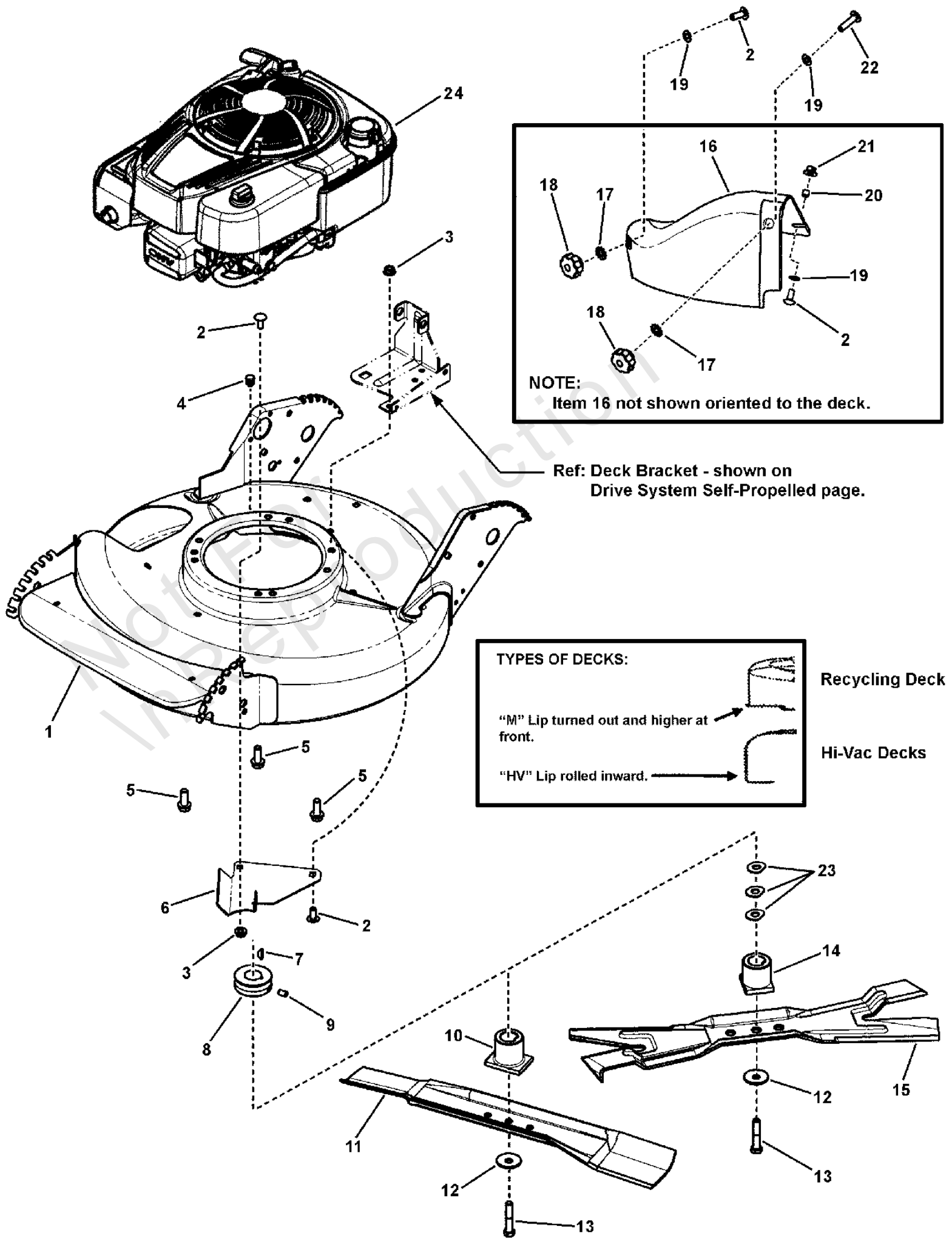
### Footnotes:

NOTE: \* Purchase engine parts from engine manufacturer dealer.

# Engine, Cutting Deck & Blade

Note: Unless noted otherwise, use the standard torque specifications

Mfg. No: 7800601





## Engine, Cutting Deck & Blade

| REF NO | PART NO        | QTY | DESCRIPTION  |
|--------|----------------|-----|--|
| 24     | 12S502-0112-B1 | 1   | * ENGINE, B&S 875 Series, Intek<br>-(used on 7800425, 7800430 & 7800492)         |
| 24     | 12S507-0115-B1 | 1   | * ENGINE, B&S 875 Series, Intek<br>-(used on 7800432 & 7800427)                  |
| 24     | 12S602-0110-F1 | 1   | * ENGINE, B&S 875 Series, Snapper, XIC, F1<br>-(used on 78000439 (NP2187520BV))  |
| 24     | 12S902-0126-B1 | 1   | * ENGINE, B&S 875 Series, W14<br>-(used on 7800552 & 7800554)                    |
| 24     | 12S907-0127-B1 | 1   | * ENGINE, B&S 875 Series, W14, ES<br>-(used on 7800553 & 7800555)                |
| 24     | 12S972-0152-B1 | 1   | * ENGINE, B&S, 875 Series, W14 w/oil fltr, 49 ST<br>-(used on 7800754 & 7800758) |
| 24     | 12S977-0153-B1 | 1   | * ENGINE, B&S, 875 Series, W14 w/oil fltr<br>-(used on 7800759)                  |

Not For  
In Reproduction

---

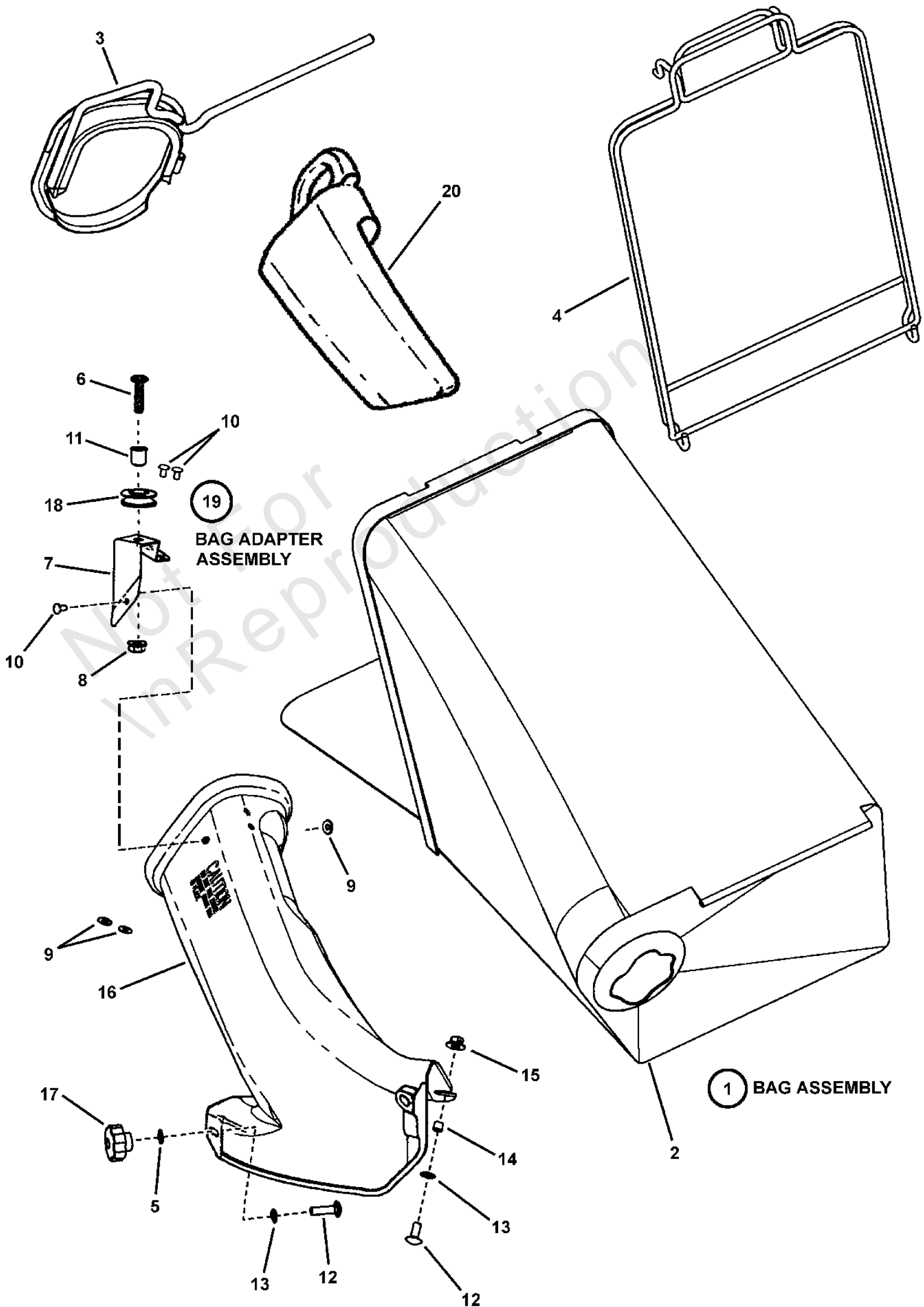
**Footnotes:**

NOTE: \* Purchase engine parts from engine manufacturer dealer.

# Grass Bag Components

Note: Unless noted otherwise, use the standard torque specifications

Mfg. No: 7800601



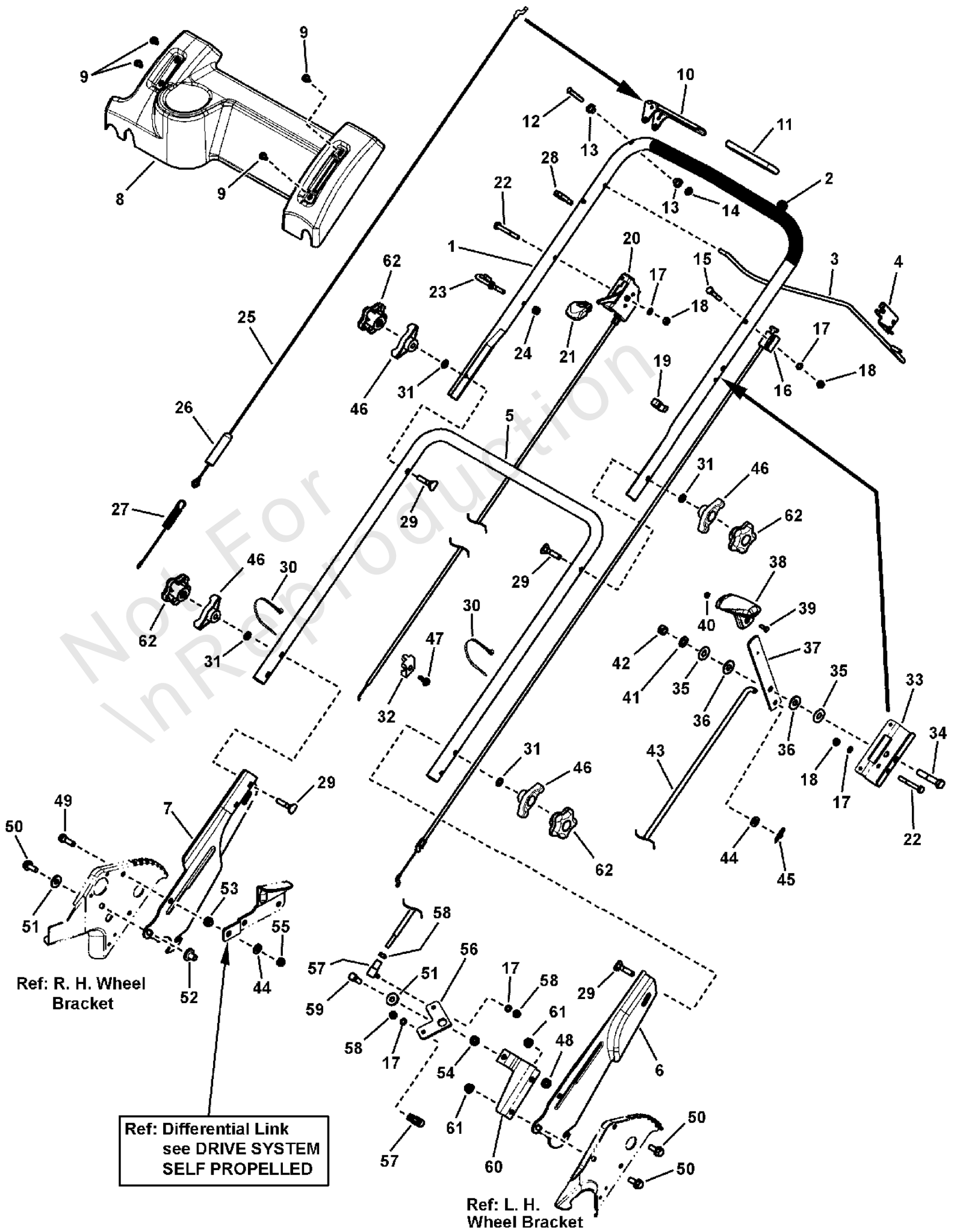
## Grass Bag Components

| REF NO | PART NO | QTY | DESCRIPTION  |
|--------|---------|-----|--|
| 1      | 7500153 | 1   | BAG ASSEMBLY, (Door)<br>-(includes items 2, 3 & 4)                       |
| 2      | 7100433 | 1   | GRASS BAG, (Door) No Graphics  |
| 3      | 7042489 | 1   | CONNECTOR, Grass Bag (weldment)  |
| 4      | 7051906 | 1   | ASSEMBLY, Bag Wire (12" Wide)  |
| 5      | 7090189 | 2   | WASHER, 5/16" Internal/External Tooth Lock                               |
| 6      | 7091527 | 1   | SCREW, 5/16-18 x 1-1/4" Hex Head Cap<br>-(was 7091984)                   |
| 7      | 7047082 | 1   | BRACKET, Rope Guide  |
| 8      | 7091601 | 2   | NUT, 5/16-18 Hex Flange Lock, GR 5<br>-(was 7091070)                     |
| 9      | 7072107 | 3   | WASHER, 15/32" Flat  |
| 10     | 7013860 | 3   | RIVET, 3/16 x .344   |
| 11     | 7012306 | 1   | BUSHING, Flange, .381 x .625 x .62                                       |
| 12     | 7091508 | 3   | BOLT, 5/16-18 x 3/4" Short Neck Carriage GR 5                            |
| 13     | 7011791 | 3   | RETAINER, 5/16" Bolt   |
| 14     | 7024340 | 1   | SPACER, .316 I.D. x .375 O.D. x .310 thick                               |
| 15     | 7090951 | 1   | NUT, 5/16-18 Hex Large Flange Center Lock                                |
| 16     | 7047081 | 1   | ADAPTER, Grass Bag   |
| 17     | 7101022 | 2   | KNOB, Fluted, 5/16-18 x 1/2"   |
| 18     | 7024228 | 1   | PULLEY, Nylon  |
| 19     | 7058037 | 1   | ASSY, Grass Bag Adapter<br>-(includes items 6, 7, 8, 9, 10, 11, 16 & 18) |
| 20     | 7016814 | 1   | PLUG, Chute Adapter  |

# Handles & Controls

Note: Unless noted otherwise, use the standard torque specifications

Mfg. No: 7800601



## Handles & Controls

| REF NO | PART NO | QTY | DESCRIPTION   |
|--------|---------|-----|---|
| 1      | 7074411 | 1   | HANDLE, Upper   |
| 2      | 7023810 | 1   | FOAM GRIP, 18.75 long   |
| 3      | 7074418 | 1   | BAIL, OPC Control   |
| 4      | 7034872 | 1   | CLIP, Zone Control  |
| 5      | 7074156 | 1   | HANDLE, Middle  |
| 6      | 7033985 | 1   | HANDLE, Lower LH (Adjustable)   |
| 7      | 7033986 | 1   | HANDLE, Lower RH (Adjustable)   |
| 8      | 7074140 | 1   | CONTROL PANEL (w/o Electrical Switch Hole)<br>-(Used on Manual Start models)  |
| 8      | 7074469 | 1   | CONTROL PANEL (w/Electrical Switch Hole)<br>-(Used on Electric Start models)  |
| 8      | 7073826 | 1   | CONTROL PANEL (w/o wheel drive slot)<br>-(Used on models 7800428 & 7800437)   |
| 9      | 7091200 | 4   | SCREW, 1/4-20 x 1/2 Pan Head Self-Tap (Torx)  |
| 10     | 7074473 | 1   | HANDLE, Clutch  |
| 11     | 7028407 | 1   | GRIP, International Symbol  |
| 12     | 7023792 | 1   | PIN, 1/4 x 1-1/2"   |
| 13     | 7014343 | 2   | BUSHING, .27 x .35 x .4 Flange  |
| 14     | 7091020 | 1   | PUSH-NUT, 1/4"  |
| 15     | 7079577 | 1   | SCREW, 1/4-20 x 1-1/2 Hex Head Cap GR 5   |
| 16     | 7034608 | 1   | * CABLE, Zone Control (52-63/64 Long)<br>-(Used on models 7800425, 7800428, 7800429, 7800437, 7800557, 7800596,<br>7800597, 7800601, 7800602, 7800841, 7800842, 7800845 & 7800941) (Refer to<br>Note:*) |
| 16     | 7102593 | 1   | * CABLE, Zone Control (52-21/32 Long)<br>-(Used on models 7800424, 7800552, 7800553, 7800554, 7800555, 7800754,<br>7800758, 7800759, 7800771, 7800843, 7800844 & 7800846) (Refer to Note:*)             |
| 16     | 7078078 | 1   | * CABLE, Zone Control (50-31/64 Long)<br>-(Used on models 7800427 & 7800432) (Refer to Note:*)  |
| 17     | 7090053 | 5   | WASHER, 1/4 Internal Tooth Lock   |
| 18     | 7091576 | 3   | NUT, 1/4-20 Hex   |
| 19     | 7023813 | 1   | CLIP, Wiring Harness  |
| 20     | 7074460 | 1   | THROTTLE CONTROL, (48.5)(B&S Clamp #213146 not shown)<br>-(Used on all models except for those shown below)   |
| 20     | 7100975 | 1   | THROTTLE CONTROL, RP, D.O.V. Engine (50.0)<br>-(Used on model 7800424)  |
| 20     | 7102594 | 1   | THROTTLE CONTROL, (62.0)<br>-(Used on models 7800552, 7800554, 7800555, 7800553, 7800754, 7800758,<br>7800759 & 7800771)  |
| 21     | 7075308 | 1   | THROTTLE KNOB, (Red)  |
| 22     | 7090505 | 2   | SCREW, 1/4-20 x 2 Hex Head Cap, GR 5  |
| 23     | 7028488 | 1   | GUIDE, Rope (1/4-20 thread)   |
| 24     | 7076978 | 1   | NUT, 1/4-28 Hex GR 5 or B   |
| 25     | 7034604 | 1   | CABLE, Clutch Control (41-1/4 Long)   |
| 26     | 7012121 | 1   | COVER, Vinyl  |
| 27     | 7012122 | 1   | SPRING, Clutch - 21S  |
| 28     | 7026219 | 1   | CLAMP, 7/8 Double Cable   |
| 29     | 7091189 | 4   | SCREW, 5/16-18 x 1-7/8 Curved Head GR 2   |
| 30     | 7012080 | 2   | CABLE-TIE, 7"   |
| 31     | 7090391 | 4   | WASHER, 5/16 Internal Tooth Lock  |
| 32     | 7023153 | 1   | CLAMP, Casing   |
| 33     | 7074003 | 1   | BRACKET, Shift  |

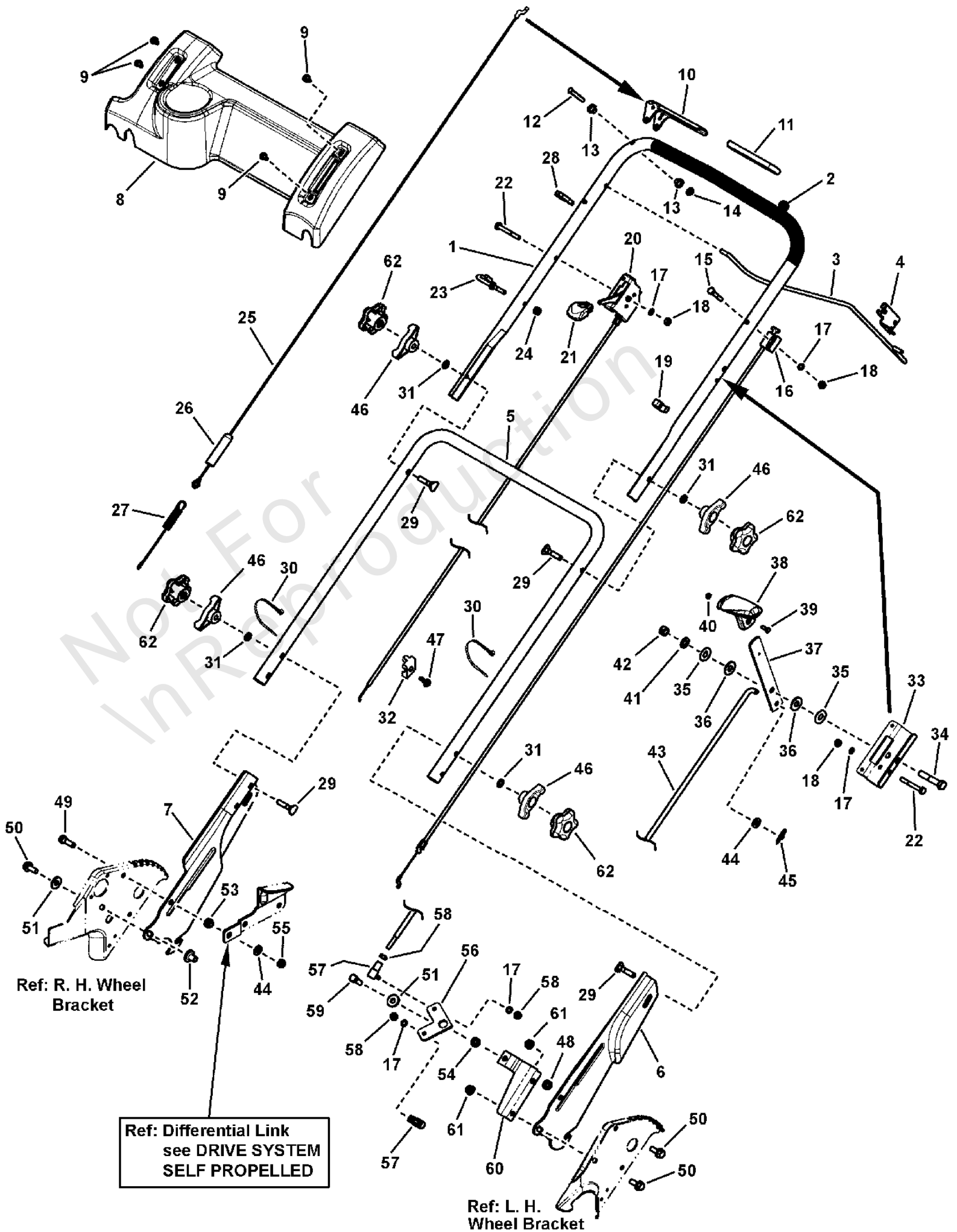
### Footnotes:

NOTE: \* Part number and revision is stamped on cable.

# Handles & Controls

Note: Unless noted otherwise, use the standard torque specifications

Mfg. No: 7800601



## Handles & Controls

| REF NO | PART NO | QTY | DESCRIPTION   |
|--------|---------|-----|---|
| 34     | 7091305 | 1   | SCREW, 3/8-16 x 2 Hex Head Cap, GR 5                  |
| 35     | 7031961 | 2   | WASHER, 7/16 Flat                                     |
| 36     | 7028465 | 2   | WASHER, Nylon   |
| 37     | 7074113 | 1   | LEVER, Shift  |
| 38     | 7075182 | 1   | KNOB, Shift (Red)                                     |
| 39     | 7091167 | 1   | SCREW, #8-32 x 1/2 Cross Recess Filister Head Machine |
| 40     | 7091018 | 1   | NUT, #8-32 Hex  |
| 41     | 7028568 | 1   | WASHER, Belleville                                    |
| 42     | 7091585 | 1   | NUT, 3/8-16 Hex Center Lock                           |
| 43     | 7074133 | 1   | ROD, Speed Control (1/4-28 thread)                    |
| 44     | 7090188 | 2   | WASHER, 11/32 Flat                                    |
| 45     | 7034162 | 1   | COTTER PIN, 5/16 Self Lock                            |
| 46     | 7035744 | 4   | KNOB, 5/16-18 Wing (Black)                            |
| 47     | 94694   | 1   | SCREW, #10-32 x .62" Hex Head Self-Tap                |
| 48     | 7091575 | 1   | NUT, 5/16-18 Hex Center Lock                          |
| 49     | 7090238 | 1   | SCREW, 5/16-24 x 1 Hex Head Cap GR 5                  |
| 50     | 7090595 | 3   | BOLT, 5/16-18 x 3/4 Hex Flange Lock GR 5              |
| 51     | 7091130 | 2   | WASHER, .33 x .88 x .09 Flat                          |
| 52     | 7090538 | 1   | TEENUT, 5/16-18                                       |
| 53     | 7012114 | 1   | BUSHING, Differential, .328 x .625 x .41              |
| 54     | 7013849 | 1   | SPACER, .33 x .63 x .156                              |
| 55     | 7091606 | 1   | NUT, 5/16-24 Hex Center Lock GR 5                     |
| 56     | 7073913 | 1   | BELL CRANK  |
| 57     | 7015753 | 2   | BALL JOINT, 1/4-28                                    |
| 58     | 7090095 | 3   | NUT, 1/4-28 Hex                                       |
| 59     | 7091904 | 1   | SCREW, 5/16-18 x 7/8 Hex Head Cap, GR 5               |
| 60     | 7073822 | 1   | BRACKET, Bell Crank                                   |
| 61     | 7091601 | 2   | NUT, 5/16-18 Hex Flange Lock, GR 5                    |
| 62     | 7105085 | 4   | KNOB, Handle, 5-Prong                                 |

---

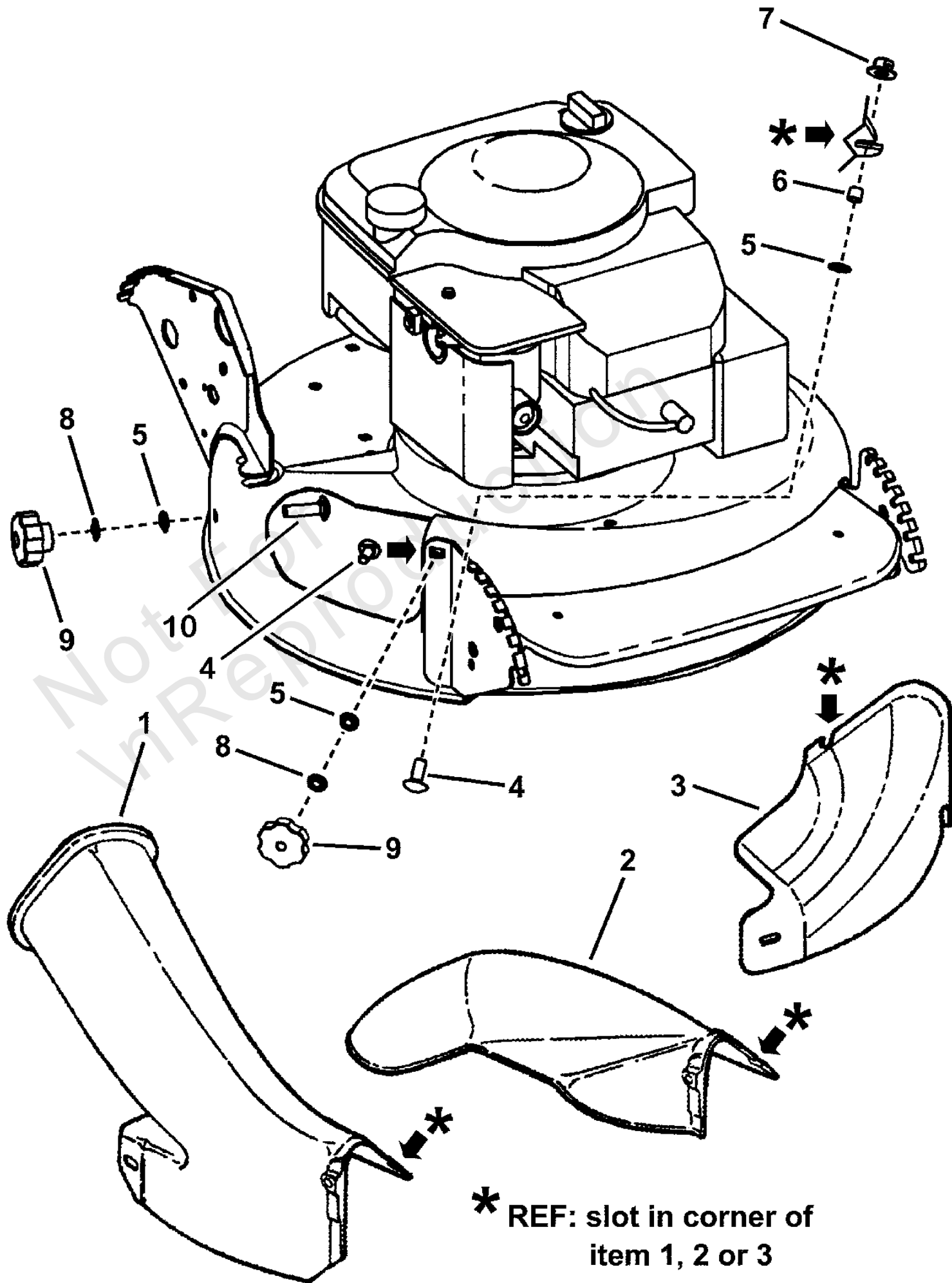
**Footnotes:**

NOTE: \* Part number and revision is stamped on cable.

# Side Chute, Adapter

Note: Unless noted otherwise, use the standard torque specifications

Mfg. No: 7800601





## Side Chute, Adapter

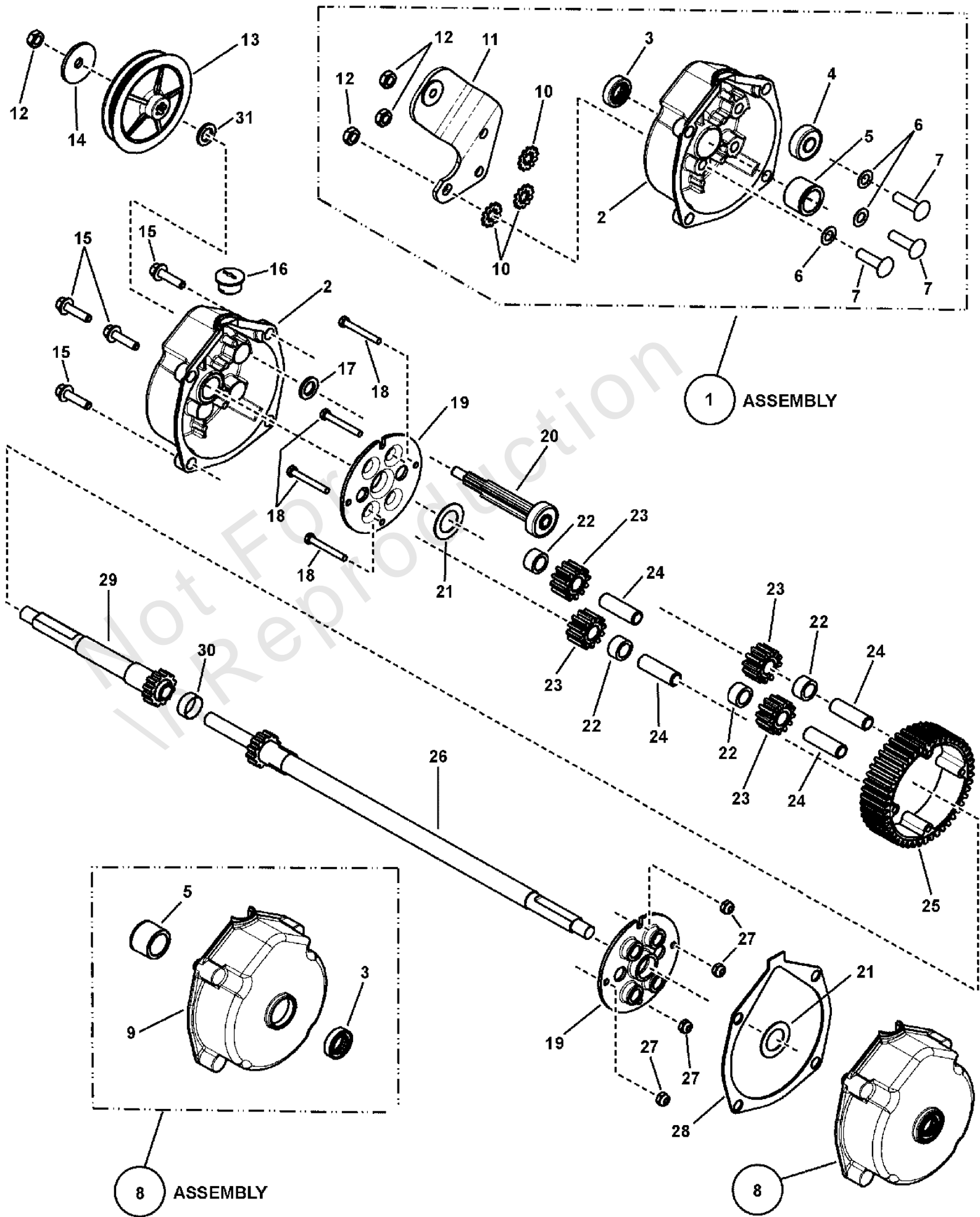
| REF NO | PART NO | QTY | DESCRIPTION   |
|--------|---------|-----|---|
| 1      | 7047081 | 1   | ADAPTER, Grass Bag<br>-(see Grass Bag Accessory page)           |
| 2      | 7042965 | 1   | CHUTE, 21" Side   |
| 3      | 7029149 | 1   | COVER, 21" Deck   |
| 4      | 7091169 | 2   | BOLT, 5/16-18 x 1-1/8" Short Neck Carriage GR 5 ZP              |
| 5      | 7011791 | 1   | RETAINER, 5/16" Bolt  |
| 6      | 7024340 | 1   | SPACER, .316 I.D. x .375 O.D. x .310 thick                      |
| 7      | 7090951 | 1   | NUT, 5/16-18 Hex Large Flange Center Lock                       |
| 8      | 7090189 | 2   | WASHER, 5/16" Internal/External Tooth Lock                      |
| 9      | 7101022 | 2   | KNOB, Fluted, 5/16-18 x 1/2"                                    |
| 10     | 7091508 | 1   | BOLT, 5/16-18 x 3/4" Short Neck Carriage GR 5<br>-(was 7090001) |

Not For In Reproduction

# Transmission (Differential)

Note: Unless noted otherwise, use the standard torque specifications

Mfg. No: 7800601



## Transmission (Differential)

| REF NO | PART NO | QTY   | DESCRIPTION   |
|--------|---------|-------|---|
| --     | 7053943 | 1     | ASSEMBLY, Transmission (Incl. items 1 thru 31)                  |
| 1      | 7053942 | 1     | ASSEMBLY, Right Housing (Incl. items 2 thru 7)<br>-(or 7051908) |
| 2      | 7029034 | 1     | HOUSING, Right Side   |
| 3      | 7012314 | 2     | SEAL, 5/8" Internal Diameter                                    |
| 4      | 7073963 | 1     | BALL BEARING, 7/16 I.D., 1/1/8" O.D.                            |
| 5      | 7029035 | 2     | BEARING, Tapered (Differential Housing)                         |
| 6      | 7024442 | 3     | GASKET, 5/8" O. D.  |
| 7      | 7014155 | 3     | SCREW, 5/16-24 x 1-1/8" Rib Neck, GR 5                          |
| 8      | 7053939 | 1     | ASSY, Left Housing (Incl. items 3, 5 & 9)<br>-(was 7053938)     |
| 9      | 7029033 | 1     | HOUSING, Left   |
| 10     | 7090189 | 3     | WASHER, 5/16" Internal/External Tooth Lock                      |
| 11     | 7051903 | 1     | WELDMENT, Differential Bracket                                  |
| 12     | 7092062 | 4     | NUT, 5/16-18 Hex Lock<br>-(was 7011201)                         |
| 13     | 7019213 | 1     | PULLEY, Poly-V Belt (3.5" O.D.)                                 |
| 14     | 7092063 | 1     | WASHER, Cone  |
| 15     | 7091825 | 4     | SCREW, 1/4-20 x 1" Hex washer Self-Tap<br>-(was 7092064)        |
| 16     | 7016544 | 1     | PLUG, Transmission Housing                                      |
| 17     | 7091720 | 1     | WASHER, .453 x .75 x .073 Flat, YZ                              |
| 18     | 7090557 | 4     | SCREW, #10-32 x 1-1/2" Hex Head Cap GR 5                        |
| 19     | 7031970 | 2     | PLATE, 46T Gear   |
| 20     | 7050767 | 1     | ASSEMBLY, Input Gear  |
| 21     | 7031965 | 2     | WASHER, Thrust, 3/4" I.D.                                       |
| 22     | 7012500 | 4     | SPACER, Pinion Gear   |
| 23     | 7021115 | 4     | GEAR, Pinion (12 tooth)   |
| 24     | 7011110 | 4     | SHAFT, Pinion   |
| 25     | 7012495 | 1     | GEAR, Differential (46 Tooth)                                   |
| 26     | 7050831 | 1     | ASSEMBLY, Long Axle<br>-(was 7051933)                           |
| 27     | 7090376 | 4     | NUT, #10-32 Hex Nyloc   |
| 28     | 7011774 | 1     | GASKET, Housing   |
| 29     | 7050830 | 1     | ASSEMBLY, Short Axle<br>-(was 7051932)                          |
| 30     | 7012543 | 1     | SPACER, Axle Gear   |
| 31     | 7011724 | 1     | WASHER, 44 x .78 x .025 Curved                                  |
| --     | 7061017 | 4 oz. | * "00" Grease, 32 oz bottle<br>-(not shown)                     |

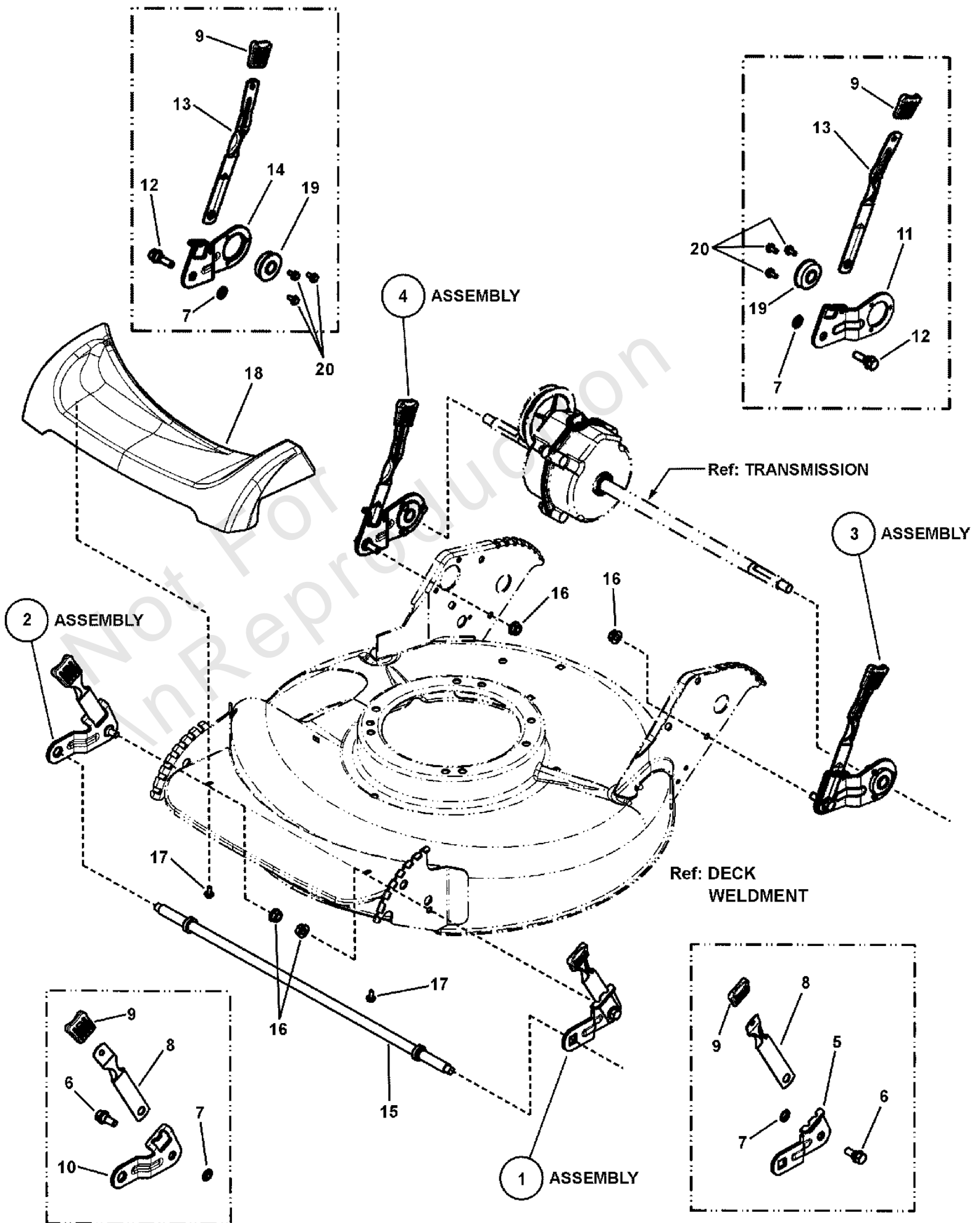
### Footnotes:

NOTE: \* Maximum capacity of transmission before causing leakage is 4 oz. DO NOT OVERFILL!

# Wheel Brackets & Latches (Self-Propelled)

Note: Unless noted otherwise, use the standard torque specifications

Mfg. No: 7800601



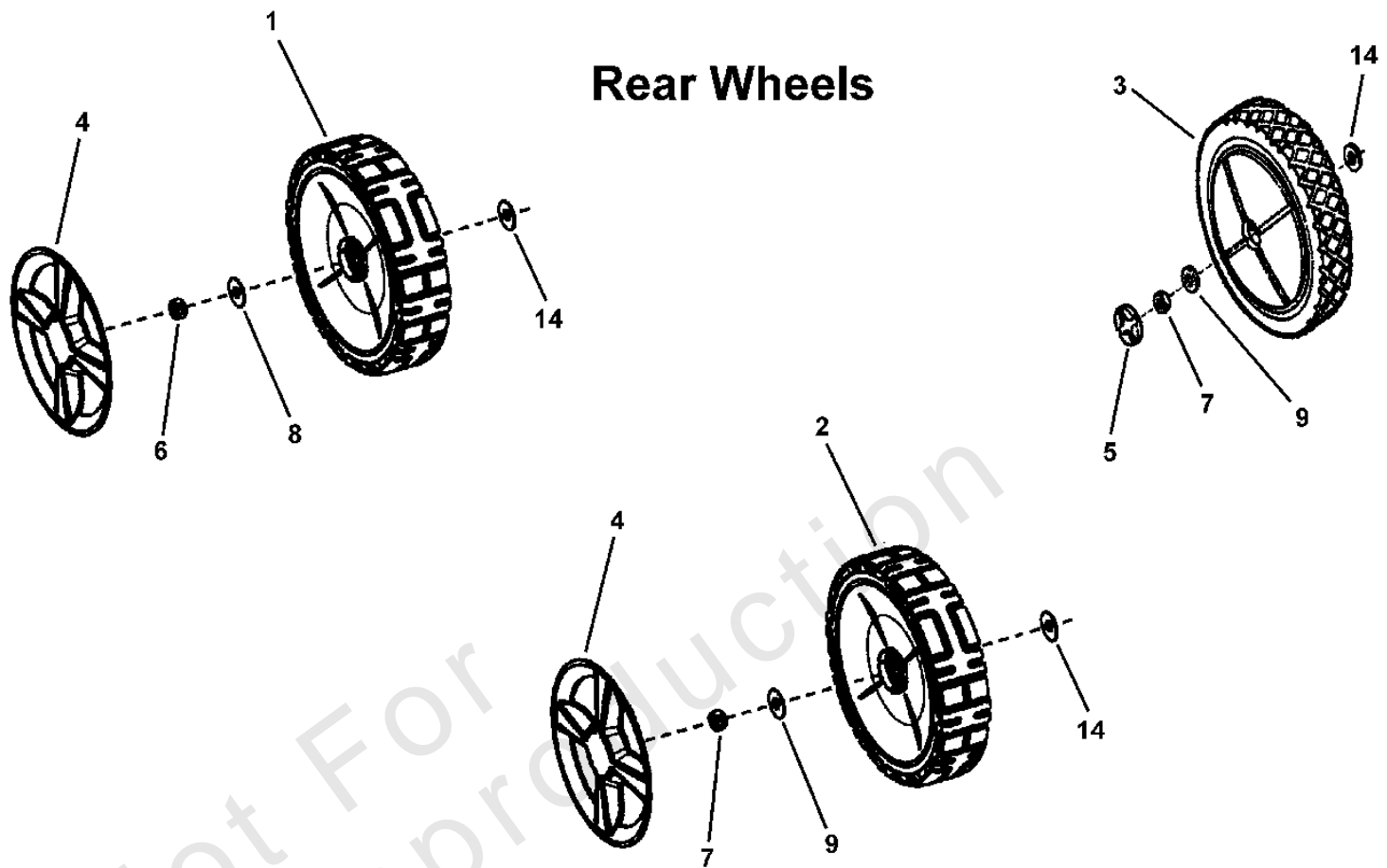
## Wheel Brackets & Latches (Self-Propelled)

| REF NO | PART NO | QTY | DESCRIPTION   |
|--------|---------|-----|---|
| 1      | 7500038 | 1   | ASSEMBLY, Front Left Wheel Arm (.512" Square Hole)                            |
| 1      | 7051885 | 1   | ASSEMBLY, Front Left Wheel Arm (.453" Square Hole)<br>-(used on 7800427 only) |
| 2      | 7051886 | 1   | ASSEMBLY, Front Right Wheel Arm   |
| 3      | 7054247 | 1   | ASSEMBLY, Wheel Arm Left Rear Long SP21S                                      |
| 4      | 7054246 | 1   | ASSEMBLY, Wheel Arm, Right Rear (S.P.)  |
| 5      | 7011393 | 1   | WHEEL ARM, L.H. Front (.512" Square Hole)                                     |
| 5      | 7031016 | 1   | WHEEL ARM, L.H. Front (.453" Square Hole)<br>-(used on 7800427 only)          |
| 6      | 7015761 | 2   | BOLT, 5/16-18 x 3/4" Hex Washer Face Shoulder                                 |
| 7      | 7011791 | 4   | RETAINER, 5/16" Bolt  |
| 8      | 7012325 | 2   | LATCH, Height   |
| 9      | 7100633 | 4   | GRIP, Height Latch - Black (1.3" Wide)  |
| 10     | 7031017 | 1   | WHEEL ARM, R.H. Front (Round Hole)  |
| 11     | 7032723 | 1   | ARM, Wheel, Left Rear   |
| 12     | 7011078 | 2   | BOLT, 5/16-18 x 1" Hex Washer Face Shoulder                                   |
| 13     | 7035717 | 2   | LATCH, Height Adjusting (long)  |
| 14     | 7032722 | 1   | ARM, Wheel, Right Rear  |
| 15     | 7100752 | 1   | AXLE, Front, Easy Line (3/8-16 Threads)                                       |
| 15     | 7021119 | 1   | AXLE, Front, (7/16-20 Threads)<br>-(used on 7800427 only)                     |
| 16     | 7091601 | 4   | NUT, 5/16-18 Hex Flange Lock, GR 5<br>-(was 7090585 or 7091070)               |
| 17     | 7900018 | 2   | SCREW, Round Washer Head Torx, Hi-Lo  |
| 18     | 7100196 | 1   | COVER, Front 21" walk   |
| 19     | 7012312 | 2   | BEARING, 9/16" I.D.   |
| 20     | 7091012 | 6   | SCREW, #10-32 x 3/8" Hex Washer Self-Tap                                      |

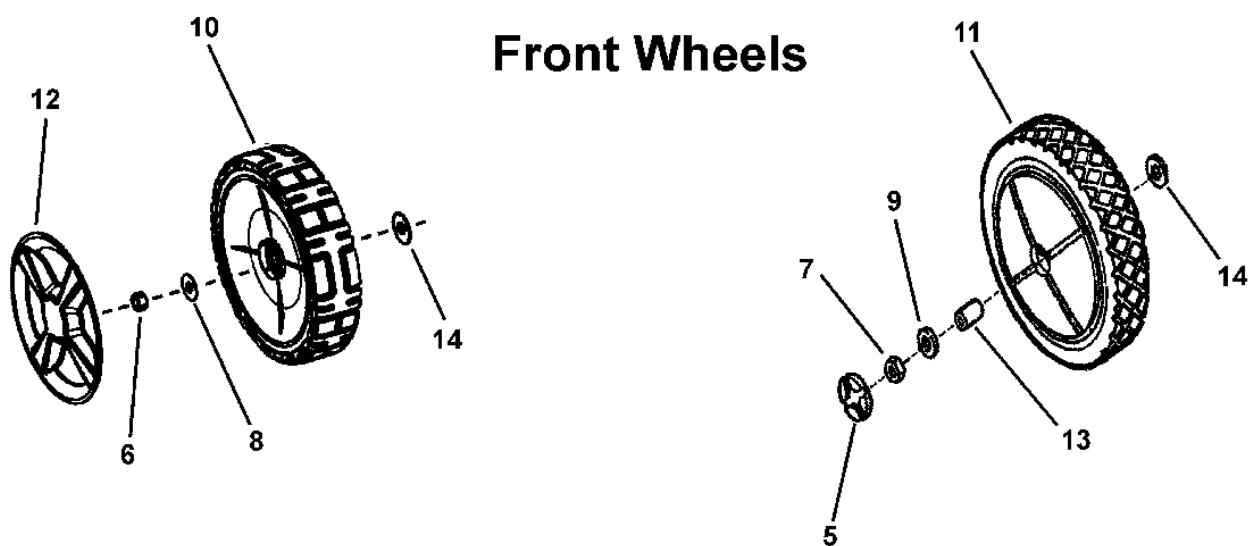
# Wheels Front and Rear

Note: Unless noted otherwise, use the standard torque specifications

Mfg. No: 7800601



**NOTE: Always replace wheel nut (item 6 or 7) when removing or replacing wheel.**



## Wheels Front and Rear

| REF NO | PART NO | QTY | DESCRIPTION  |
|--------|---------|-----|--|
| 1      | 7501092 | 2   | ASSY, Wheel, 10 x 2" Idle, BB, Snapper Tread (push)<br>-(incl. two 1-1/8" O.D. Flanged Ball Bearings (p/n 7101380))    |
| 2      | 7501078 | 2   | ASSY, Wheel, 10 x 2" Drive w/metal insert Snapper Tread<br>-(used on all self-propelled models except RP2187520BVE)    |
| 3      | 7029011 | 2   | WHEEL, 10 x 1.75" Plastic (self-propelled)<br>-(used on RP2187520BVE (7800427))  |
| 4      | 7102625 | 2   | HUBCAP, 10" Wheel, Spoked- Snapper Cool Gray   |
| 5      | 7017829 | 4   | PLUG, Wheel  |
| 6      | 7091585 | 2   | NUT, 3/8-16 Hex Center Lock  |
| 7      | 7090377 | 4   | NUT, 7/16-20 Hex Center Lock Jam   |
| 8      | 722604  | 2   | WASHER, .387 x 1" O.O. Flat  |
| 9      | 7031961 | 2   | WASHER, 7/16" Flat   |
| 10     | 7500540 | 2   | ASSY, Wheel, 8 x 2" Idle, Snapper Tread, Charcoal Gray<br>-(incl. two 1-1/8" O.D. Flanged Ball Bearings (p/n 7101380)) |
| 11     | 7029010 | 2   | WHEEL, 8 x 1.75" Plastic<br>-(used on RP2187520BVE (7800427) only)   |
| 12     | 7101350 | 2   | HUBCAP, 8" Wheel, Spoked- Snapper Cool Gray<br>-(used on 7500540 wheel)  |
| 13     | 7012309 | 2   | BUSHING, Axle  |
| 14     | 7100585 | 4   | WASHER, Shim, .875 x .531 x .060<br>-(qty. 2 on self-propelled)  |

# Hardware Identification & Torque Specifications

| Torque Specification Chart                             |           |      |           |      |            |      |            |      |
|--|-----------|------|-----------|------|------------|------|------------|------|
| FOR STANDARD METRIC MACHINE HARDWARE (Tolerance ± 20%) |           |      |           |      |            |      |            |      |
| Property Class   | 5.6       |      | 8.8       |      | 10.9       |      | 12.9       |      |
|  | Class 5.6 |      | Class 8.8 |      | Class 10.9 |      | Class 12.9 |      |
| Size Of Hardware                                       | in/lbs    | Nm.  | in/lbs    | Nm.  | in/lbs     | Nm.  | in/lbs     | Nm.  |
|  | ft/lbs    |      | ft/lbs    |      | ft/lbs     |      | ft/lbs     |      |
| M3   | 5.88      | .56  | 13.44     | 1.28 | 19.2       | 1.80 | 22.92      | 2.15 |
| M4   | 13.44     | 1.28 | 30.72     | 2.90 | 43.44      | 4.10 | 52.56      | 4.95 |
| M5   | 26.4      | 2.50 | 60.96     | 5.75 | 5.97       | 8.10 | 7.15       | 9.7  |
| M6   | 44.64     | 4.3  | 7.3       | 9.9  | 10.3       | 14   | 12.1       | 16.5 |
| M7   | 5.2       | 7.1  | 12.1      | 16.5 | 16.9       | 23   | 19.9       | 27   |
| M8   | 7.7       | 10.5 | 17.7      | 24   | 25         | 34   | 29         | 40   |
| M10  | 15        | 21   | 35        | 48   | 50         | 67   | 59         | 81   |
| M12  | 26        | 36   | 61        | 83   | 86.2       | 117  | 103        | 140  |
| M14  | 42        | 58   | 101       | 132  | 136        | 185  | 162        | 220  |
| M16  | 64        | 88   | 147       | 200  | 210        | 285  | 250        | 340  |
| M18  | 89        | 121  | 202       | 275  | 287        | 390  | 346        | 470  |
| M20  | 126       | 171  | 290       | 390  | 405        | 550  | 486        | 660  |
| M22  | 169       | 230  | 390       | 530  | 559        | 745  | 656        | 890  |
| M24  | 217       | 295  | 497       | 375  | 708        | 960  | 840        | 1140 |
| M27  | 320       | 435  | 733       | 995  | 1032       | 1400 | 1239       | 1680 |
| M30  | 435       | 590  | 995       | 1350 | 1401       | 1900 | 1681       | 2280 |
| M33  | 590       | 800  | 1349      | 1830 | 1902       | 2580 | 2278       | 3090 |
| M36  | 759       | 1030 | 1740      | 2360 | 2441       | 3310 | 2935       | 3980 |
| M39  | 988       | 1340 | 2249      | 3050 | 3163       | 4290 | 3798       | 5150 |

| Torque Specification Chart                      |             |       |             |       |             |         |
|---|-------------|-------|-------------|-------|-------------|---------|
| FOR STANDARD MACHINE HARDWARE (Tolerance ± 20%) |             |       |             |       |             |         |
| Hardware Grade                                  | No Marks    |       | SAE Grade 5 |       | SAE Grade 8 |         |
|   | SAE Grade 2 |       | SAE Grade 5 |       | SAE Grade 8 |         |
| Size Of Hardware                                | in/lbs      | Nm.   | in/lbs      | Nm.   | in/lbs      | Nm.     |
|   | ft/lbs      |       | ft/lbs      |       | ft/lbs      |         |
| 8-32  | 19          | 2.1   | 30          | 3.4   | 41          | 4.6     |
| 8-36  | 20          | 2.3   | 31          | 3.5   | 43          | 4.9     |
| 10-24   | 27          | 3.1   | 43          | 4.9   | 60          | 6.8     |
| 10-32   | 31          | 3.5   | 49          | 5.5   | 68          | 7.7     |
| 1/4-20  | 66          | 7.6   | 8           | 10.9  | 12          | 16.3    |
| 1/4-28  | 76          | 8.6   | 10          | 13.6  | 14          | 19.0    |
| 5/16-18   | 11          | 15.0  | 17          | 23.1  | 25          | 34.0    |
| 5/16-24   | 12          | 16.3  | 19          | 25.8  | 29          | 34.0    |
| 3/8-16  | 20          | 27.2  | 30          | 40.8  | 45          | 61.2    |
| 3/8-24  | 23          | 31.3  | 35          | 47.6  | 50          | 68.0    |
| 7/16-14   | 30          | 40.8  | 50          | 68.0  | 70          | 95.2    |
| 7/16-20   | 35          | 47.6  | 55          | 74.8  | 80          | 108.8   |
| 1/2-13  | 50          | 68.0  | 75          | 102.0 | 110         | 149.6   |
| 1/2-20  | 55          | 74.8  | 90          | 122.4 | 120         | 163.2   |
| 9/16-12   | 65          | 88.4  | 110         | 149.6 | 150         | 204.0   |
| 9/16-18   | 75          | 102.0 | 120         | 163.2 | 170         | 231.2   |
| 5/8-11  | 90          | 122.4 | 150         | 204.0 | 220         | 299.2   |
| 5/8-18  | 100         | 136   | 180         | 244.8 | 240         | 326.4   |
| 3/4-10  | 160         | 217.6 | 260         | 353.6 | 386         | 525.0   |
| 3/4-16  | 180         | 244.8 | 300         | 408.0 | 420         | 571.2   |
| 7/8-9   | 140         | 190.4 | 400         | 544.0 | 600         | 816.0   |
| 7/8-14  | 155         | 210.8 | 440         | 598.4 | 660         | 897.6   |
| 1-8   | 220         | 299.2 | 580         | 788.8 | 900         | 1,244.0 |
| 1-12  | 240         | 326.4 | 640         | 870.4 | 1,000       | 1,360.0 |

The guides and ruler furnished below are designed to help you select the appropriate hardware.



Nut, M8

Thread Diameter (mm)

Inside Diameter (in)      Threads per inch

Nut, 1/2-16



Screw, M8- 1.25 x 25

Thread Diameter (mm)      Distance between threads (mm)      Body Length (mm)

Body Diameter      Threads per inch      Body Length (in)

Screw, 1/2- 16 x 2



## Standard Hardware Sizing

When a washer or nut is identified as 1/2" (M8), this is the *Nominal size*, meaning the *inside diameter* is 1/2 inch (8mm metric thread diameter); if a second number is present it represents the *threads per inch* (distance between threads).

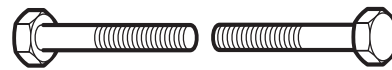
When bolt or capscrew is identified as 1/2 - 16 x 2" (M8 - 1.25 x 50), this means the *Nominal size*, or body diameter is 1/2 inch (8mm metric thread diameter), the second number, 16, represents the *threads per inch*, (*distance between threads*). The final number is the body length of the bolt or screw, 2 inches (50mm).

## NOTES

- These torque values are to be used for all hardware excluding: locknuts, self-tapping screws, thread forming screws, sheet metal screws and socket head setscrews.
- Recommended seating torque values for locknuts:
  - for prevailing torque locknuts - use 65% of grade 5 torques.
  - for flange whizlock nuts and screws - use 135% of grade 5 torques.
- Unless otherwise noted on assembly drawings, all torque values must meet this specification.

## Common Hardware Types

Hex Head Capscrew



Washer



Carriage Bolt



Hex Nut

## Wrench & Fastener Size Guide

|                                  |                                  |                                  |  |                                 |
|----------------------------------|----------------------------------|----------------------------------|--|---------------------------------|
|                                  |                                  |                                  |  |                                 |
| 1/4" Bolt or Nut<br>Wrench—7/16" | 5/16" Bolt or Nut<br>Wrench—1/2" | 3/8" Bolt or Nut<br>Wrench—9/16" | 7/16" Bolt or Nut<br>Wrench (Bolt)—5/8"<br>Wrench (Nut)—11/16" | 1/2" Bolt or Nut<br>Wrench—3/4" |
| M6 Bolt or Nut<br>Wrench—10mm    | M8 Bolt or Nut<br>Wrench—13mm    | M10 Bolt or Nut<br>Wrench—17mm   | M12 Bolt or Nut<br>Wrench—19mm                                 | M14 Bolt or Nut<br>Wrench—22mm  |



