



Parts Manual

Mfg. No: 7800557
P216020KWV, 21" 6 TP Steel Deck Series

Model Components	Page
Accessory Recycling Kits.....	4
Accessory Snapperizer.....	6
Decals.....	8
Drive System Self-Propelled.....	10
Engine, Cutting Deck & Blade.....	14
Grass Bag Components.....	16
Handles and Controls.....	18
Side Chute, Adapter.....	22
Thatcherizer Kit.....	24
Transmission (Differential).....	26
Wheel Brackets & Latches (Self-Propelled).....	28
Wheels Front and Rear.....	30
Torque Specification Chart.....	32

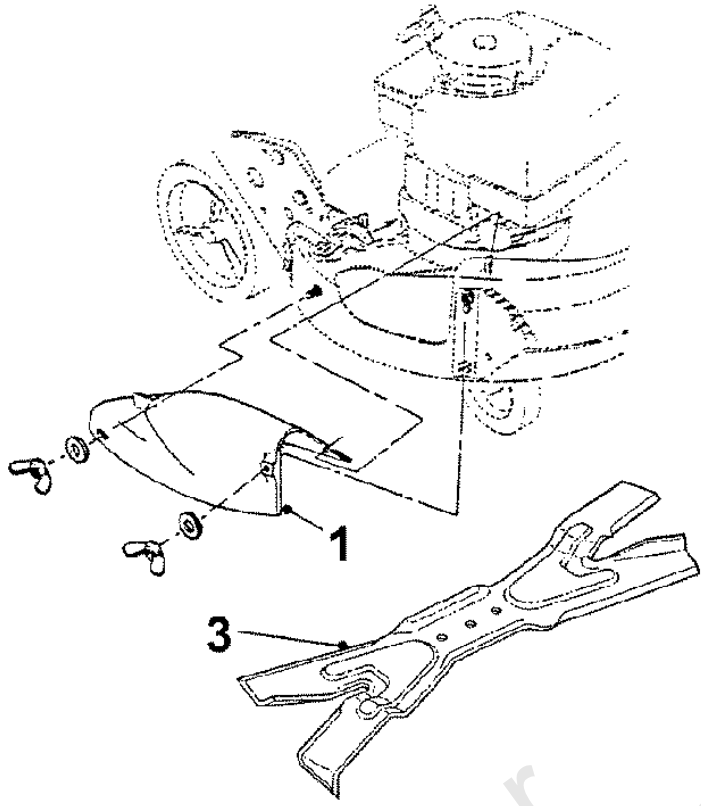
Not For
Reproduction

Accessory Recycling Kits

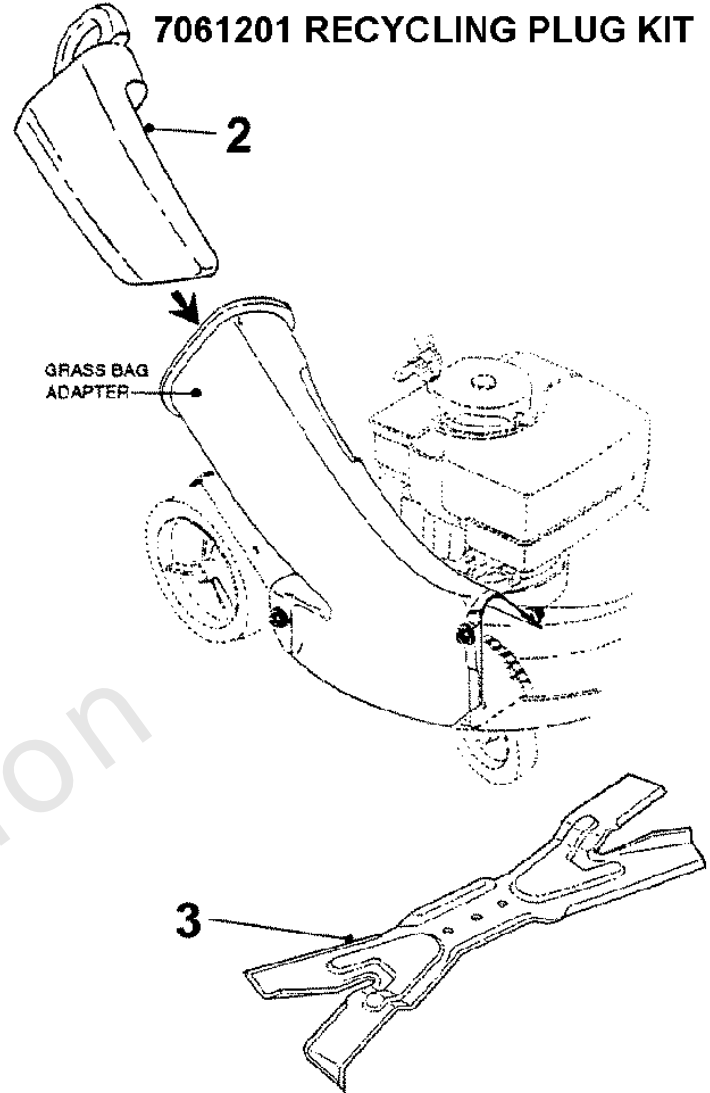
Note: Unless noted otherwise, use the standard torque specifications

Mfg. No: 7800557

7061200 RECYCLING COVER KIT



7061201 RECYCLING PLUG KIT



Not For
Reproduction

Accessory Recycling Kits

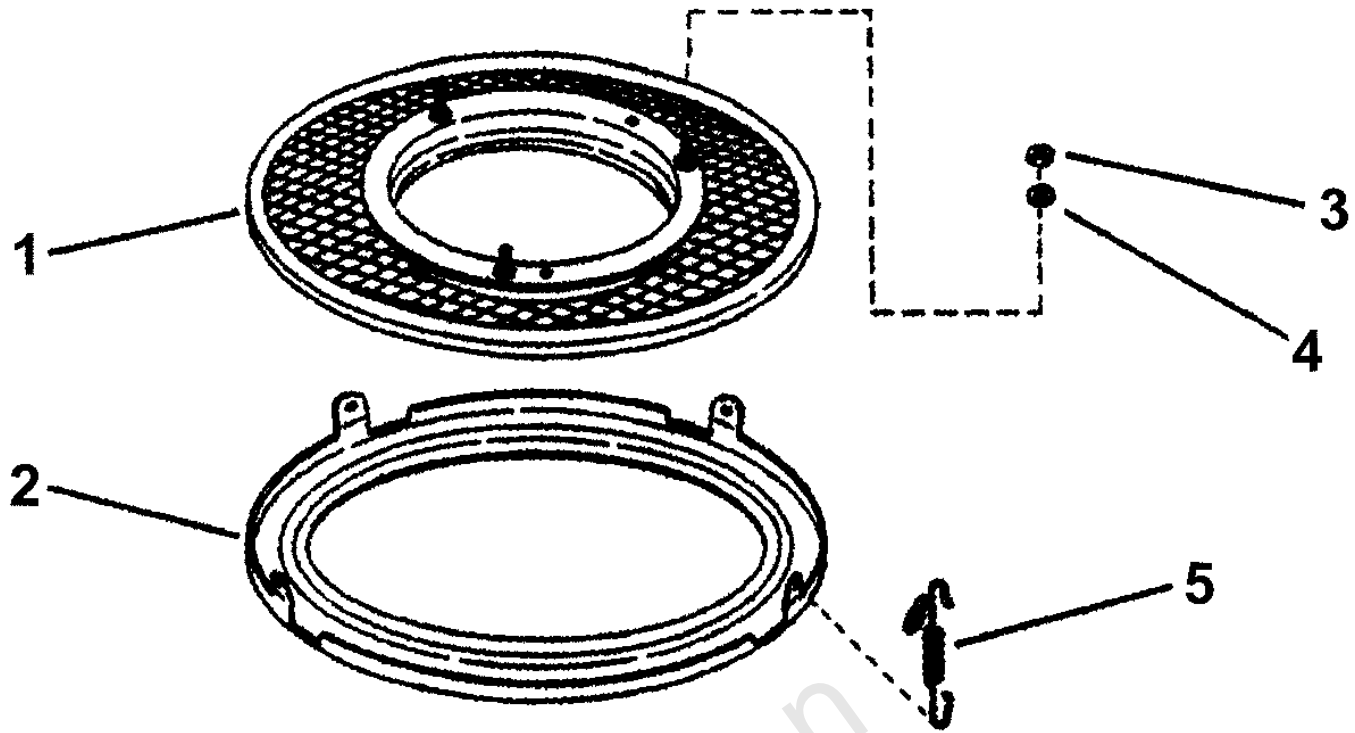
REF NO	PART NO	QTY	DESCRIPTION
--	7061200		KIT, Recycling Cover (Includes items 1 & 3 shown below) -(For 4HP & above engines)
--	7061201		KIT, Recycling Plug (Incl. items 2 & 3 shown below) -(For 4HP & above engines)
1	7029149	1	COVER, 21" Deck
2	7016814	1	PLUG, Chute Adapter
3	7026407	1	BLADE, 21" Quad Edge Ninja

Not For
Reproduction

Accessory Snapperizer

Note: Unless noted otherwise, use the standard torque specifications

Mfg. No: 7800557



Not For
Reproduction

Accessory Snapperizer

REF NO	PART NO	QTY	DESCRIPTION
--	7063041		KIT, Snapperizer (Incl. items 1 thru 5) -(for "FR" & "M" type outlip decks)
1	7051243	1	SCREEN, Fastener Assembly
2	7072002	1	RING, Bottom (22.60" Inside Diameter)
3	7091297	3	NUT, 5/16-24 Hex, GR 5
4	7090187	3	WASHER, 5/16" Split Lock
5	7012587	3	SPRING

Not For
Reproduction



Decals

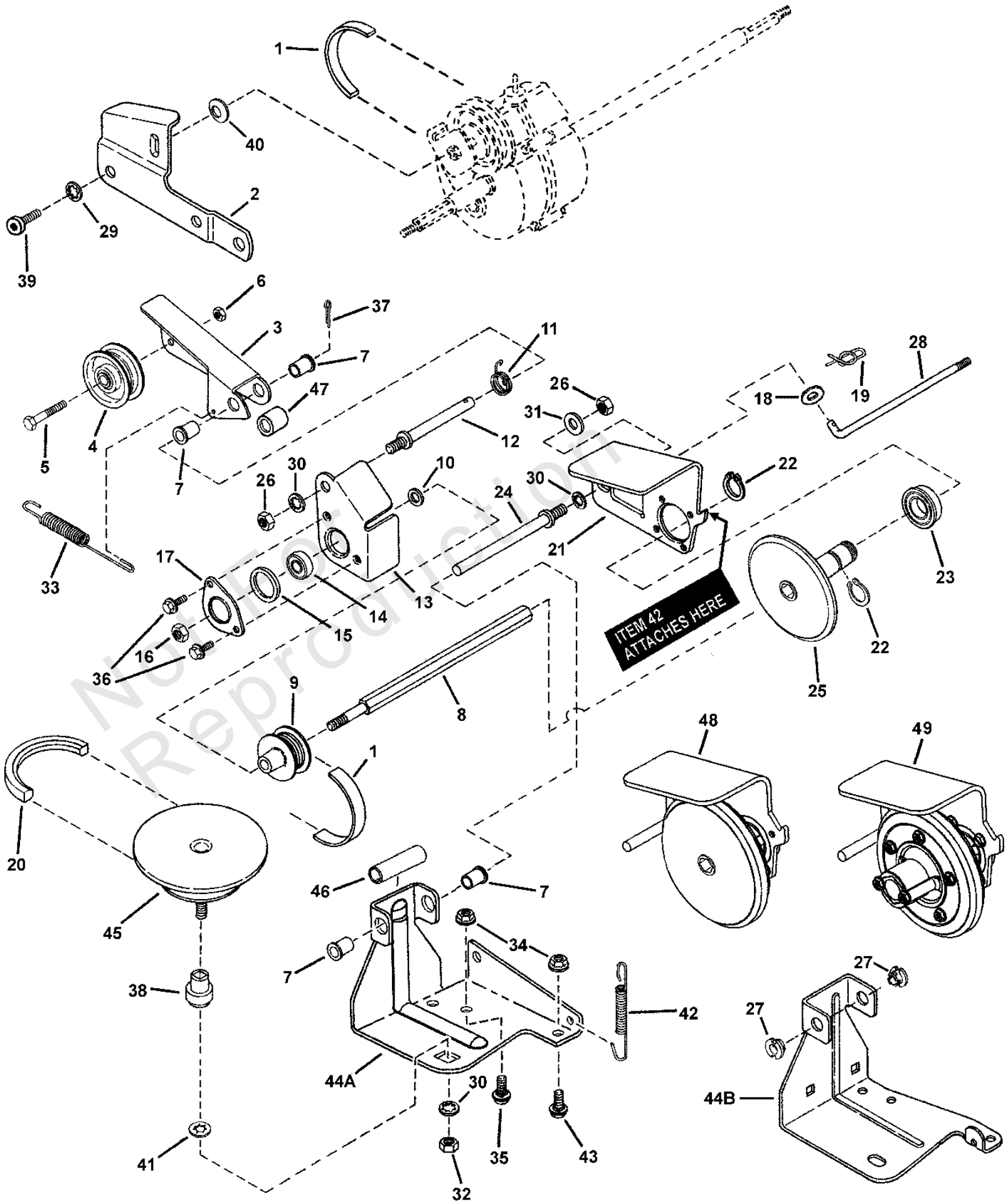
REF NO	PART NO	QTY	DESCRIPTION
1	7102940	1	DECAL, Easy Speed, Control Panel
2	7046720	1	DECAL, Chute/Deflector
3	7102938	1	DECAL, Front Cover, Hi-Vac
4	7102939	1	DECAL, Front Cover, Ninja Mulching System
5	7029782	1	DECAL, OPC Bail (International Symbol)
6	7075471	1	DECAL, Speed Shift
7	7075524	1	DECAL, Throttle Control, KVV
8	7100984	1	DECAL, Warning/Danger Walk-Behind Mowers
9	7013010	1	DECAL, Danger, Cut Finger

Not For
Reproduction

Drive System Self-Propelled

Note: Unless noted otherwise, use the standard torque specifications

Mfg. No: 7800557



Drive System Self-Propelled

REF NO	PART NO	QTY	DESCRIPTION
1	7012354	1	BELT, Poly-V
2	7034179	1	LINK, Differential (Comm.)
--	7051921		ASSEMBLY, Clutch Idler (Includes items 3 thru 7 & 47)
3	7032832	1	ARM, Clutch Idler
4	7012124	1	PULLEY, Idler, V21
5	7091025	1	SCREW, 1/4-28 x 1-3/8" Hex Head Cap, GR 5
6	7090303	1	NUT, 1/4-28 Hex Top Lock
7	7012306	4	BUSHING, Flange, .381 x .625 x .62
8	7072284	1	SHAFT, Hex Drive
9	7024521	1	PULLEY, Poly-V (2" O.D.)
10	7090188	1	WASHER, 11/32" Flat
11	7012126	1	SPRING, Idler- Torsion
12	7012111	1	STUD, Idler (3/8-24 thread)
13	7031873	1	HOLDER, Bearing (Inner Half)
14	7028014	1	BALL BEARING, Spherical O.D., .38 I.D.
15	7011025	1	O-RING, V21
16	7090289	1	NUT, 3/8-24 Hex Center Lock, GR 5
17	7031809	1	HOLDER, Bearing (Outer Half)
18	7091294	1	WASHER, .28 x .63 x .06 Flat
19	7090673	1	COTTER PIN, .06 x .50 YZ -(Was 7091629)
20	7046784	1	BELT, Engine Drive (Stretch)
21	7300977A	1	THRUST PLATE, Short
22	7010746	2	RETAINING RING, .625 External
23	7026693	1	BALL BEARING, 3/4" Bore
24	7012125	1	GUIDE, Thrust Plate (3/8-24 thread)
25	7041855	1	DISC, Driven (Cantilever) -(ref: 7074139, Driven Disc Ass'y)
26	7091630	2	NUT, 3/8-24 Hex
--	7015753	1	BALL JOINT, 1/4-28 (not shown) -(see Handles & Controls page (item 39))
--	7090095	2	NUT, 1/4-28 Hex (not shown) -(see Handles & Controls page (item 40))
27	7012117	2	BUSHING, Nylon (.390 ID, .490 OD) -(Used on 7800556)
28	7074145	1	LINK, Transfer (1/4-28 thread)
29	7090391	1	WASHER, 5/16" Internal Tooth Lock
30	7090390	3	WASHER, 3/8" Internal Tooth Lock
31	7090122	1	WASHER, 3/8" Flat
33	7012122	1	SPRING, Clutch - 21S
32	7091302	1	NUT, 3/8-16 Hex
34	7090585	2	NUT, 5/16-18 Hex Flange Lock, GR 5 -(Was 7091601)
35	7090731	1	BOLT, 5/16-18 x 1/2", Short Neck Carriage, GR 5
36	7091122	2	SCREW, 1/4-20 x 1/2" Hex Flange Self-Tap -(Was 7090539)
37	7091597	1	COTTER PIN, 3/32 x 1/2" -(Was 7090555)
38	7017696	1	BUSHING, Powdered Metal
39	7091542	1	SCREW, 5/16-18 x 1/2" Pan Head Self-Tap (Torx)
40	7011724	1	WASHER, 44 x .78 x .025 Curved

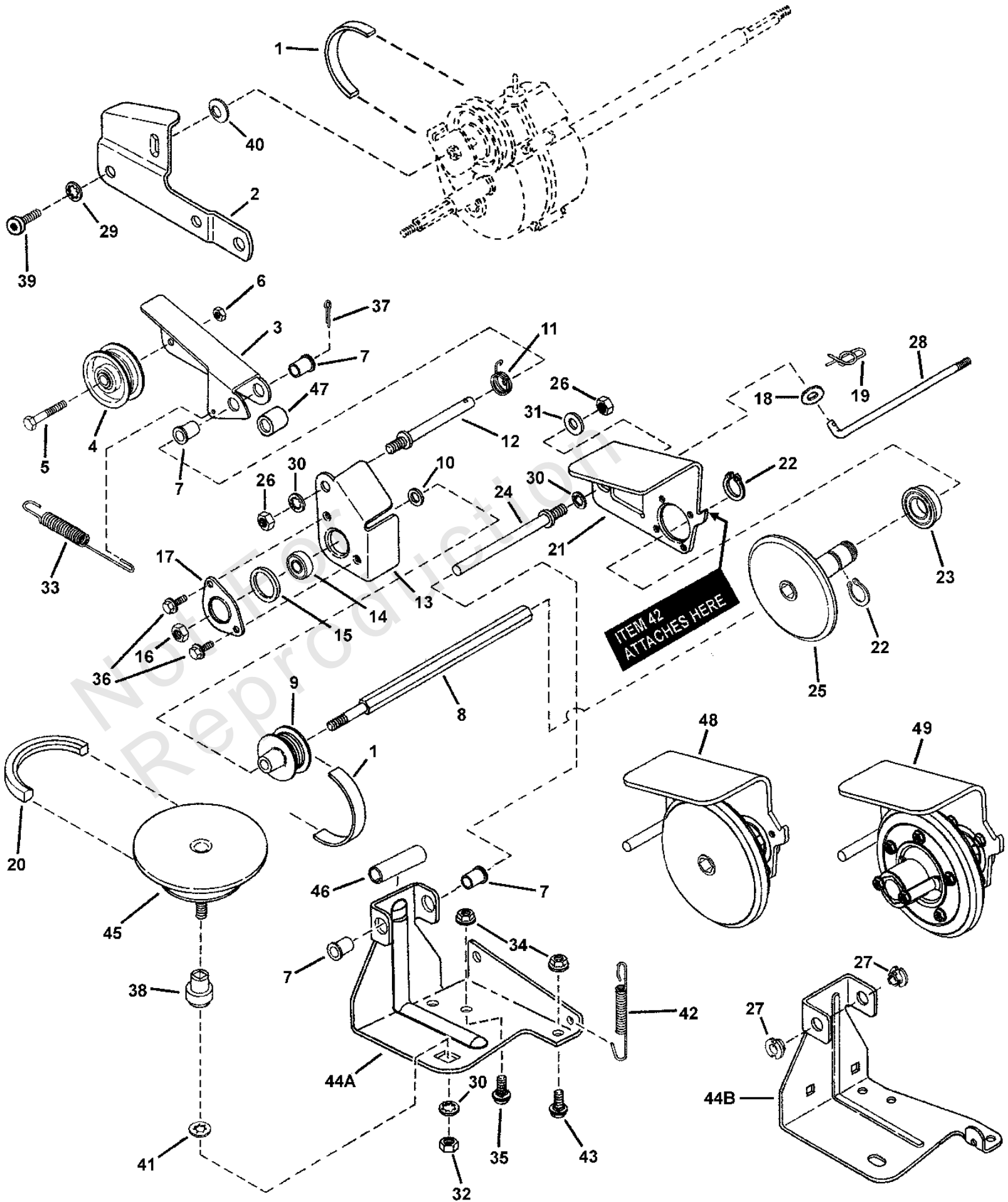
Footnotes:

NOTE: * Includes Steel Drive Disc Assy (7073528), Bushing (7013893), 3/8-16 Hex Nut (7091302) & item 38.

Drive System Self-Propelled

Note: Unless noted otherwise, use the standard torque specifications

Mfg. No: 7800557



Drive System Self-Propelled

REF NO	PART NO	QTY	DESCRIPTION
41	7013847	1	RETAINER, 3/8" Bolt
42	7029025	1	SPRING, Wheel Drive
43	7090799	1	BOLT, 5/16-18 x 5/8" Short Neck Carriage GR 5 -(Was 7091026)
44A	7033774	1	BRACKET, Deck -(Used on 7800557)
44A	7052987A		BRACKET ASSEMBLY, Deck (Includes 7, 44A & 46) -(Used on 7800557)
44B	7059462	1	BRACKET ASSEMBLY, Deck (Includes 44B & 7012117 bushing) -(Used on 7800556)
45	7073528	1	DRIVE DISC, Steel
45	7061275		* KIT, Drive Disc Assembly
46	7021758	1	SPACER, (.500 ID x .65 OD x 1.75 Long)
47	7100447	1	SPACER, Idler Arm (.500 ID x .970 Long)
48	7074139		ASSEMBLY, Driven Disc (includes items 21-26, 30&31)
49	7600109		ASSEMBLY, Driven Disc - Commercial (Can be used instead of items 21-26,

Not For
Reproduction

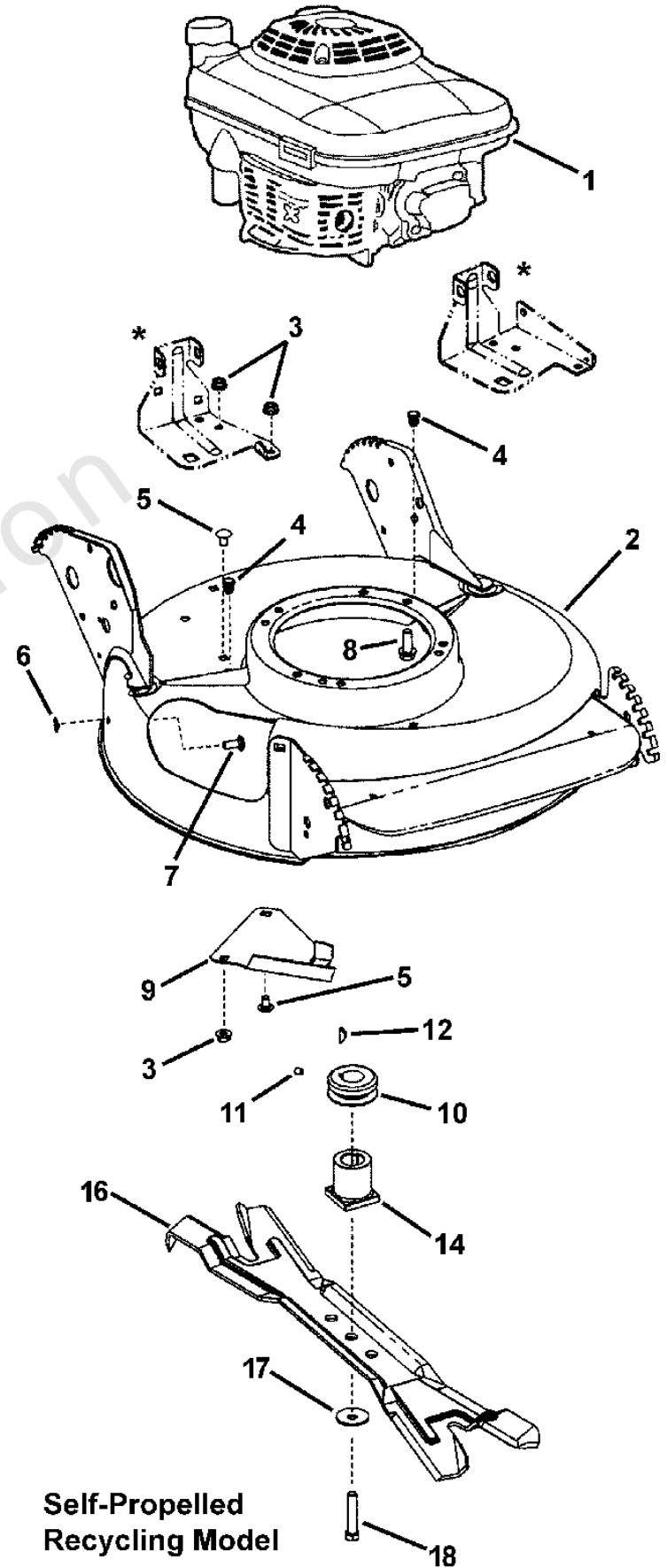
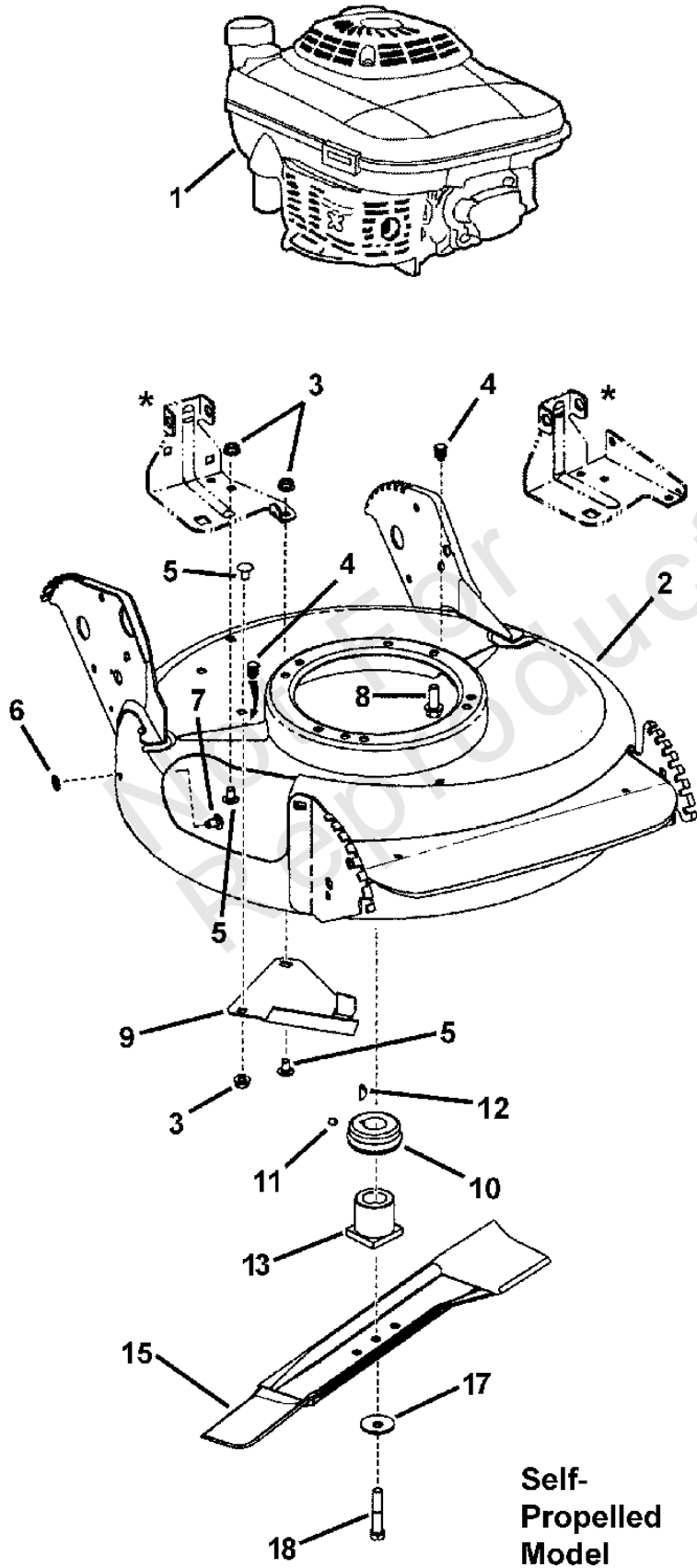
Footnotes:

NOTE: * Includes Steel Drive Disc Assy (7073528), Bushing (7013893), 3/8-16 Hex Nut (7091302) & item 38.

Engine, Cutting Deck & Blade

Note: Unless noted otherwise, use the standard torque specifications

Mfg. No: 7800557



* Ref: Deck Bracket (see Drive System page)

Engine, Cutting Deck & Blade

REF NO	PART NO	QTY	DESCRIPTION
1	FJ180V-BS23-R	1	* ENGINE, Kawasaki 6 HP w/side recoil -(Used on P26020KWV model)
1	FJ180V-DS13-R	1	* ENGINE, Kawasaki 6 HP -(Used on RP216020KWV model)
2	7600034D	1	WELDMENT, Deck, 21" Non-Adjust Air -(Used on "R" (recycling) models, was 7400026 or 7500081)
2	7500549	1	WELDMENT, Deck, 21", S.P., HV, Core Model -(Used on P26020KWV model, was 7400027)
3	7091601	3	NUT, 5/16-18 Hex Flange Lock, GR 5 -(Was 7091070)
4	7046780	2	PLUG, Hole, Polyethylene
5	7090731	3	BOLT, 5/16-18 x 1/2", Short Neck Carriage, GR 5
6	7011791	1	RETAINER, 5/16" Bolt
7	7091508	1	BOLT, 5/16-18 x 3/4" Short Neck Carriage GR 5 -(Was 7090001)
8	7090324	3	SCREW, 3/8-16 x 1" Self-Tapping -(engine mount bolts)
9	7074568	1	COVER, Belt
10	7015780	1	PULLEY, Engine (25mm I. D. x 2-1/8" O.D.)
11	7090201	1	SET SCREW, 5/16-18 x 5/16" Hex Socket
12	7091214	1	KEY, Woodruff #HP-506 Hi-Pro
13	7015626	1	HUB, Blade Drive, 25 mm I.D. -(Used on P26020KWV model)
14	7101414	1	HUB, Blade, 21" WBM, RD, 2 Position -(Used on RP216020KWV model)
15	7026691	1	BLADE, 21" Standard Lift
16	7026407	1	BLADE, 21" Ninja (Quad Edge) -(Used on Recycling Models)
17	7012063	2	WASHER, Cone 3/8"
18	7090167	1	SCREW, 3/8-24 x 2" Hex Head Cap, GR 5

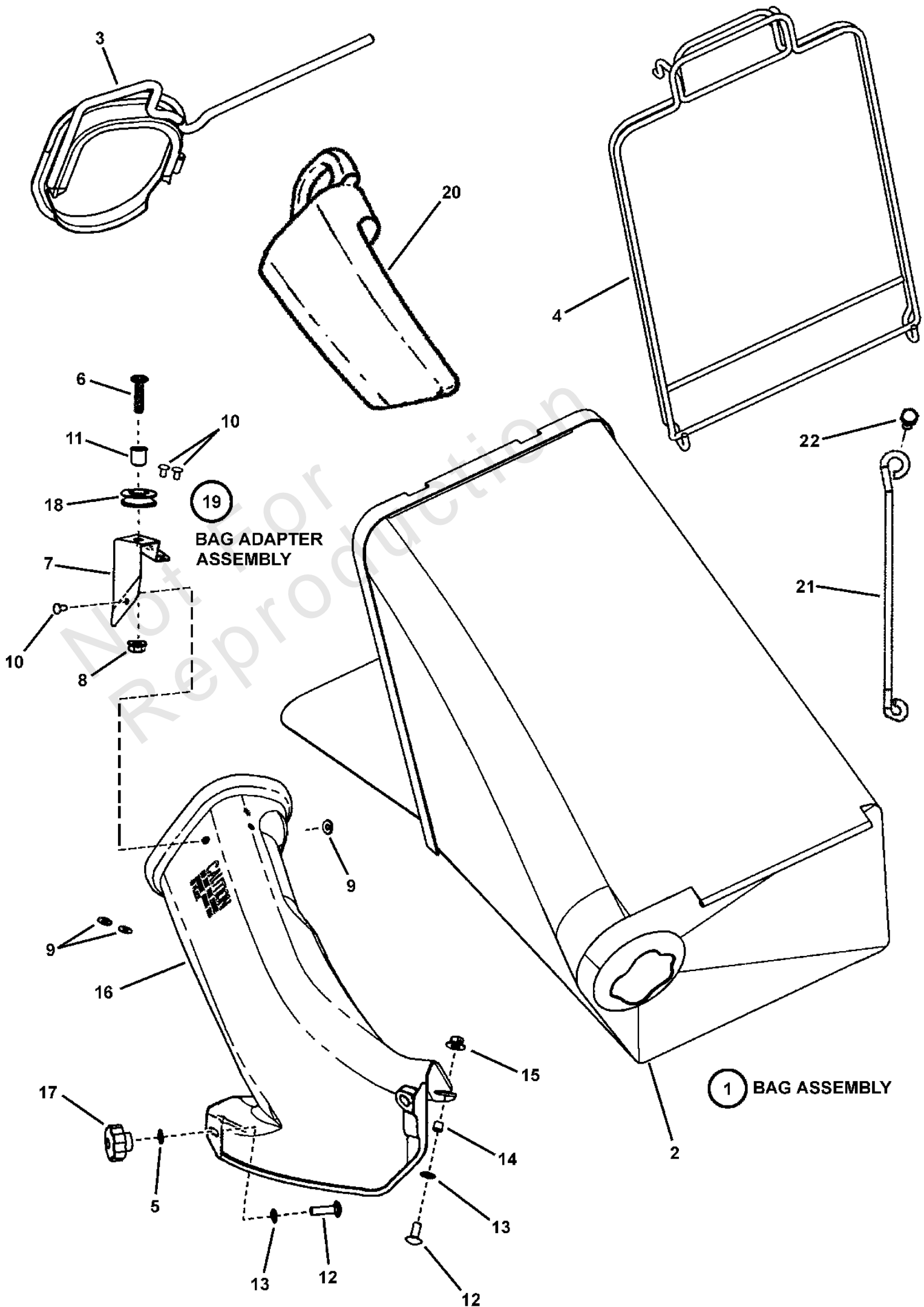
Footnotes:

NOTE: * Purchase engine parts from engine manufacturer dealer.

Grass Bag Components

Note: Unless noted otherwise, use the standard torque specifications

Mfg. No: 7800557



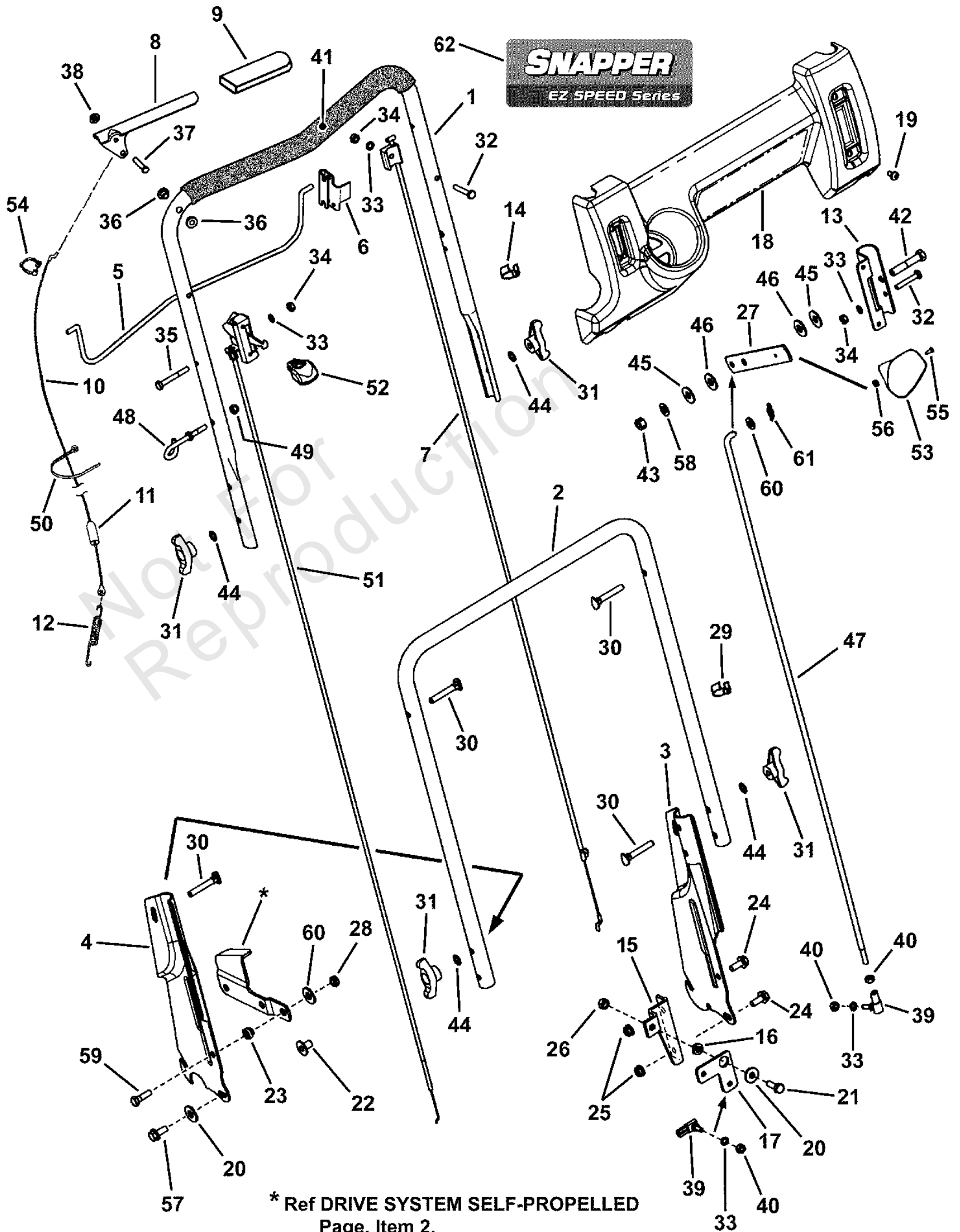
Grass Bag Components

REF NO	PART NO	QTY	DESCRIPTION
1	7500153	1	GRASS BAG ASSY. (Door) No Graphics -(includes items 2, 3 & 4)
2	7100433	1	GRASS BAG, (Door) No Graphics
3	7042489	1	CONNECTOR, Grass Bag (weldment)
4	7051906	1	ASSEMBLY, Bag Wire (12" Wide)
5	7090189	2	WASHER, 5/16" Internal/External Tooth Lock
6	7091984	1	SCREW, 5/16-18 x 1-1/4" Pan Head Machine
7	7047082	1	BRACKET, Rope Guide
8	7091601	2	NUT, 5/16-18 Hex Flange Lock, GR 5 -(Was 7090585 or 7091070)
9	7072107	3	WASHER, 15/32" Flat
10	7013860	3	RIVET, 3/16 x .344
11	7012306	1	BUSHING, Flange, .381 x .625 x .62
12	7091508	3	BOLT, 5/16-18 x 3/4" Short Neck Carriage GR 5 -(Was 7090001)
13	7011791	3	RETAINER, 5/16" Bolt
14	7024340	1	SPACER, .316 I.D. x .375 O.D. x .310 thick
15	7090951	1	NUT, 5/16-18 Hex Large Flange Center Lock
16	7047081	1	ADAPTER, Grass Bag
17	7101022	2	KNOB, Fluted, 5/16-18 x 1/2"
18	7024228	1	PULLEY, Nylon
19	7058037	1	ASSY, Grass Bag Adapter -(includes items 6, 7, 8, 9, 10, 11, 16 & 18)
20	7016814	1	PLUG, Chute Adapter
21	7043327	1	BRACE, Bag Adapter, Kawasaki
22	7078102	1	SCREW, M6 x 1.0 x 30MM Hex Head Cap

Handles and Controls

Note: Unless noted otherwise, use the standard torque specifications

Mfg. No: 7800557



Handles and Controls

REF NO	PART NO	QTY	DESCRIPTION
1	7074411	1	HANDLE, Upper
2	7074156	1	HANDLE, Middle
3	7033985	1	HANDLE, Lower LH (Adjustable)
4	7033986	1	HANDLE, Lower RH (Adjustable)
5	7074418	1	BAIL, OPC Control
6	7034872	1	CLIP, Zone Control
7	7074141	1	* CABLE, Zone Control (56-5/16" Long)
8	7074473	1	HANDLE, Clutch
9	7028407	1	GRIP, International Symbol
10	7034604	1	CABLE, Clutch Control (41-1/4" Long)
11	7012121	1	COVER, Vinyl
12	7012122	1	SPRING, Clutch - 21S
13	7074003	1	BRACKET, Shift
14	7024641	2	TIE, Wire, 1.29 long, black
15	7073822	1	BRACKET, Bell Crank
16	7013849	1	SPACER, .33 x .63 x .156
17	7073913	1	BELL CRANK
18	7074140	1	CONTROL PANEL (w/o Electrical Switch Hole) -(Used on Manual Start Models)
19	7091200	4	SCREW, 1/4-20 x 1/2" Pan Head Self-Tap (Torx)
20	7091130	2	WASHER, .33 x .88 x .09 Flat
21	7091904	1	SCREW, 5/16-18 x 7/8" Hex Head Cap, GR 5
22	7090538	1	TEENUT, 5/16-18 -(Was 7090895)
23	7012114	1	BUSHING, Differential, .328 x .625 x .41
24	7090595	2	BOLT, 5/16-18 x 3/4" Hex Flange Lock GR 5
25	7091601	2	NUT, 5/16-18 Hex Flange Lock, GR 5 -(Was 7090585 or 7091070)
26	7091575	1	NUT, 5/16-18 Hex Center Lock -(Was 7091067)
27	7074113	1	LEVER, Shift
28	7091606	1	NUT, 5/16-24 Hex Center Lock GR 5 -(Was 7091074)
29	7023813	1	CLIP, Wiring Harness
30	7091189	4	SCREW, 5/16-18 x 1-7/8" Curved Head GR 2 -(Was 7091740)
31	7035744	4	KNOB, 5/16-18 Wing (Black)
31	720727	4	KNOB, 5/16-18 Wing (Black) -(Briggs part)
32	7079577	2	SCREW, 1/4-20 x 1-1/2" Hex Head Cap GR 5
33	7090053	5	WASHER, 1/4" Internal Tooth Lock -(Was 7091023)
34	7091576	3	NUT, 1/4-20 Hex -(Was 7091100)
35	7090505	1	SCREW, 1/4-20 x 2" Hex Head Cap, GR 5
36	7014343	2	BUSHING, .27 x .35 x .4 Flange
37	7023792	1	PIN, 1/4 x 1-1/2"
38	7091020	1	PUSH-NUT, 1/4"
39	7015753	2	BALL JOINT, 1/4-28
40	7090095	4	NUT, 1/4-28 Hex
41	7023810	1	FOAM GRIP, 18.75" long

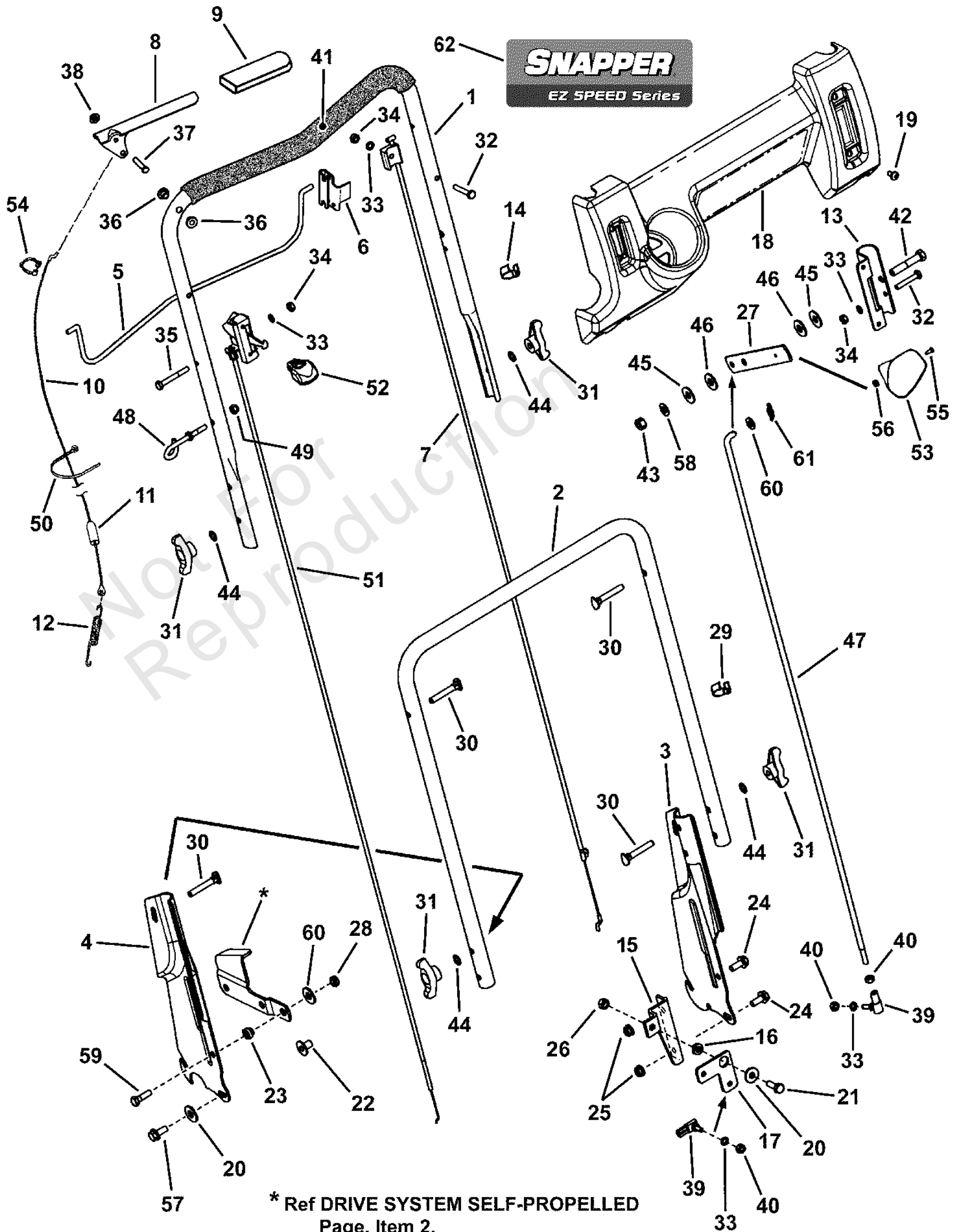
Footnotes:

NOTE: * Part number and revision is stamped on cable.

Handles and Controls

Note: Unless noted otherwise, use the standard torque specifications

Mfg. No: 7800557



Handles and Controls

REF NO	PART NO	QTY	DESCRIPTION
42	7091305	1	SCREW, 3/8-16 x 2" Hex Head Cap, GR 5
43	7091585	1	NUT, 3/8-16 Hex Center Lock
44	7090391	4	WASHER, 5/16" Internal Tooth Lock
45	7031961	8	WASHER, 7/16" Flat
46	7028465	2	WASHER, Nylon
47	7074133	1	ROD, Speed Control (1/4-28 thread)
48	7028488	1	GUIDE, Rope (1/4-20 thread)
49	7076978	1	NUT, 1/4-28 Hex GR 5 or B
50	7012080	1	CABLE-TIE, 7"
51	7074138	1	THROTTLE CONTROL, 6.0 KWV (53.25")
52	7075308	1	THROTTLE KNOB (Red)
53	7075182	1	KNOB, Shift (Red)
54	7026219	1	CLAMP, 7/8" Double Cable
55	7091167	1	SCREW, #8-32 x 1/2" Cross Recess Filister Head Machine
56	7091018	1	NUT, #8-32 Hex
57	7091524	1	SCREW, 5/16-18 x 1-1/4" Hex Washer Head Self-Tap -(Was 7091151)
58	7028568	1	WASHER, Belleville
59	7090238	1	SCREW, 5/16-24 x 1" Hex Head Cap GR 5
60	7090188	1	WASHER, 11/32" Flat
61	7034162	1	COTTER PIN, 5/16 Self Lock
62	7102940	1	DECAL, Easy Speed, Control Panel

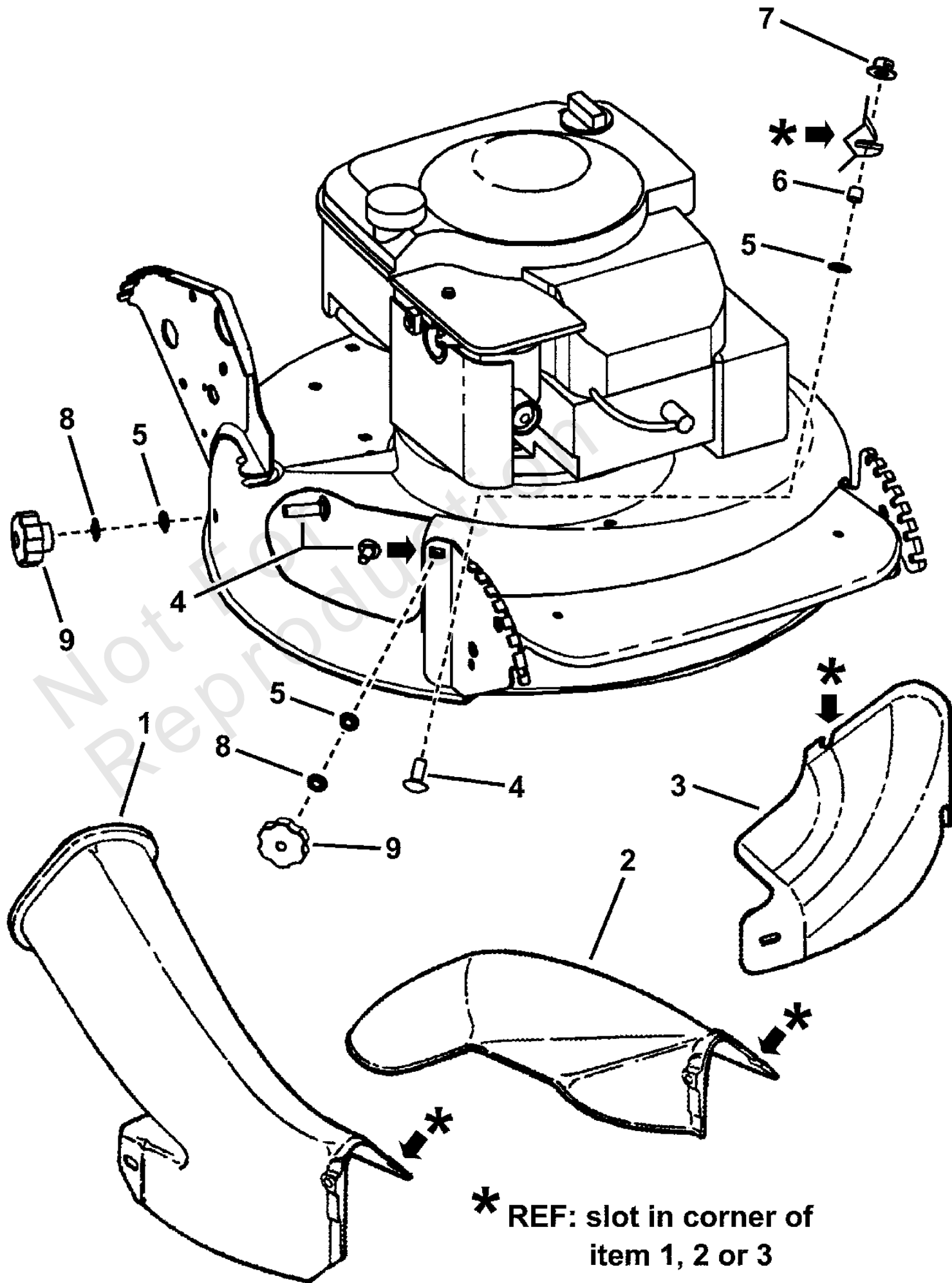
Footnotes:

NOTE: * Part number and revision is stamped on cable.

Side Chute, Adapter

Note: Unless noted otherwise, use the standard torque specifications

Mfg. No: 7800557



Side Chute, Adapter

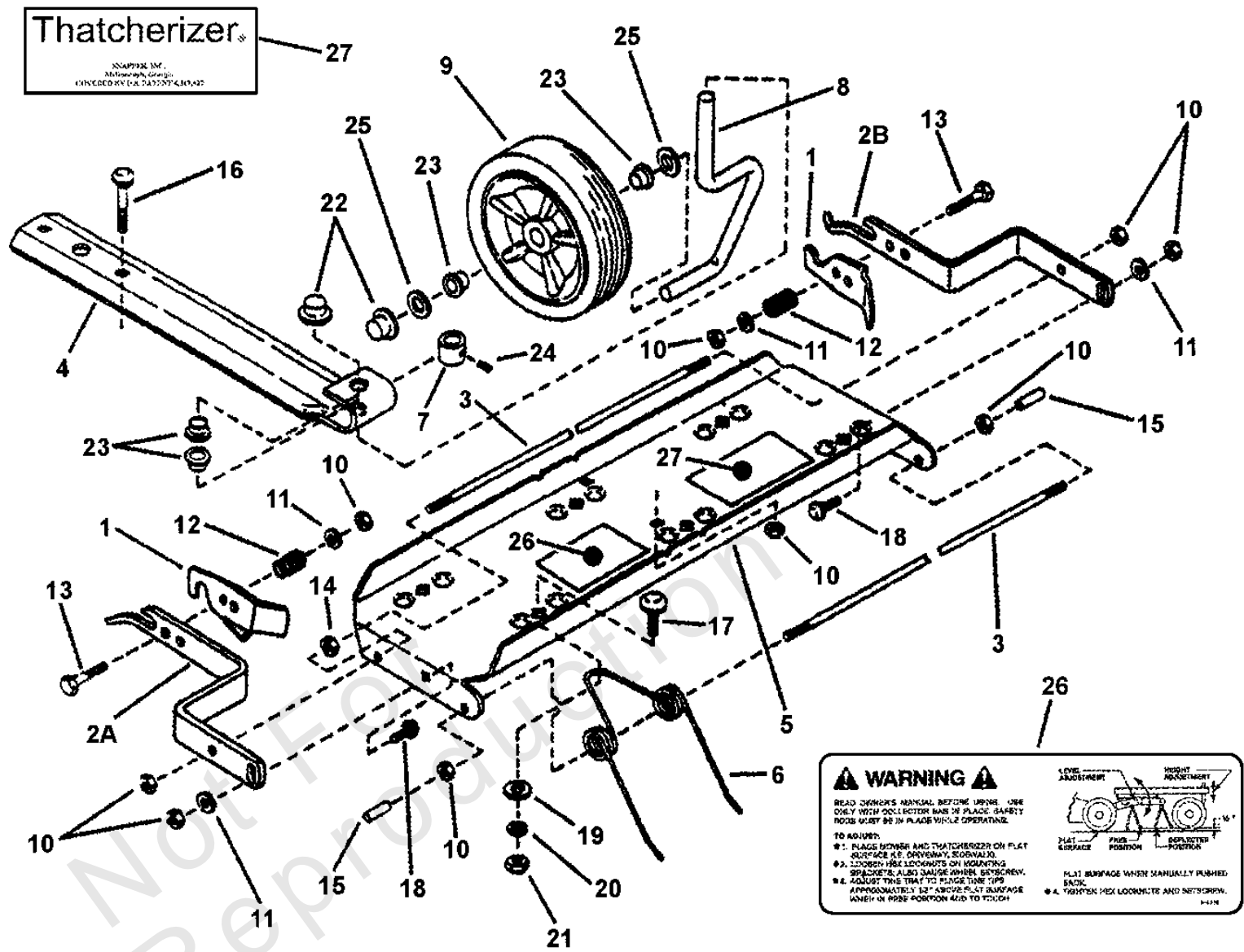
REF NO	PART NO	QTY	DESCRIPTION
1	7047081	1	ADAPTER, Grass Bag -(see Grass Bag Accessory page)
2	7042965	1	CHUTE, 21" Side
3	7029149	1	COVER, 21" Deck
4	7091508	3	BOLT, 5/16-18 x 3/4" Short Neck Carriage GR 5 -(Was 7090001)
5	7011791	1	RETAINER, 5/16" Bolt
6	7024340	1	SPACER, .316 I.D. x .375 O.D. x .310 thick
7	7090951	1	NUT, 5/16-18 Hex Large Flange Center Lock
8	7090189	2	WASHER, 5/16" Internal/External Tooth Lock
9	7101022	2	KNOB, Fluted, 5/16-18 x 1/2"

Not For
Reproduction

Thatcherizer Kit

Note: Unless noted otherwise, use the standard torque specifications

Mfg. No: 7800557



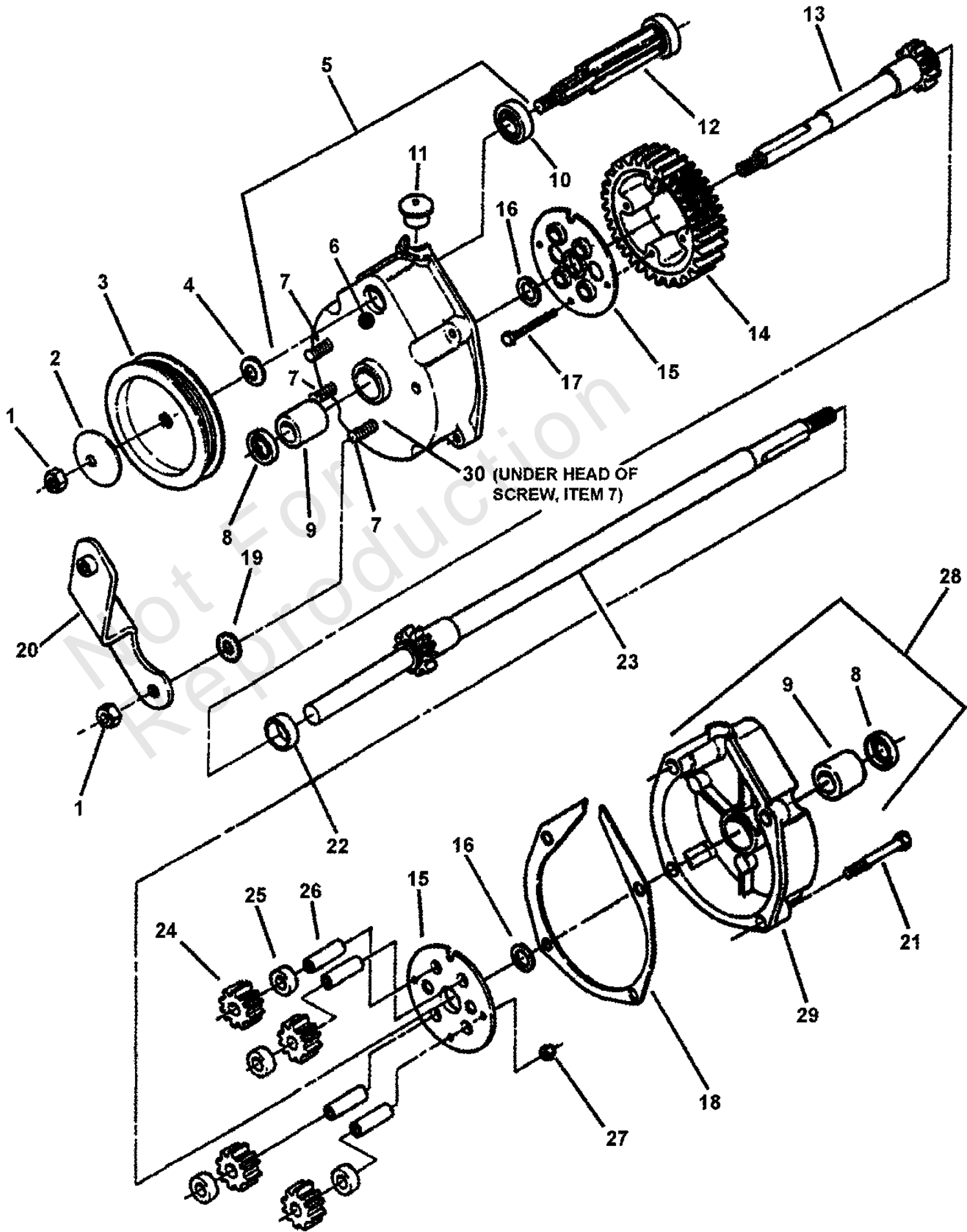
Thatcherizer Kit

REF NO	PART NO	QTY	DESCRIPTION
--	7061256		KIT, Thatcherizer (Incl. items 1 thru 27)
1	7032891	2	LATCH, Frame Attachment
2A	7026572	1	BAR, Mount (Right Hand)
2B	7026573	1	BAR, Mount (Left Hand)
3	7018499	2	ROD, Tine
4	7018700	1	SUPPORT, Wheel
5	7019948	1	TRAY, Tine
6	7018496	6	SPRING, Tine Thatching -(Was 7060574)
7	7014100	1	BUSHING, Wheel Adjuster
8	7018493	1	AXLE, Wheel
9	7018189	1	WHEEL, 7.00 x 1.50 Gage
10	7091705	10	NUT, 1/4-20 Hex Top Lock -(Was 7090761 (only 9 shown))
11	7091294	4	WASHER, 1/4" Flat -(Was 7090055)
12	7022425	2	SPRING, Compression
13	7090825	2	BOLT, 1/4-20 x 1-1/4" Hex, GR 5
14	7091576	2	NUT, 1/4-20 Hex, GR 5 -(Was 7090063)
15	7022424	2	CAP, Vinyl
16	7090015	2	BOLT, 1/4-20 x 2-1/2" Square Neck Carriage -(only 1 shown)
17	7091303	6	BOLT, 5/16-18 x 1" Square Neck Carriage, GR 5 -(Was 7090383 (only 1 shown))
18	7091530	2	BOLT, 1/4-20 x 3/4" Square Neck Carriage, GR 5 -(Was 7090074)
19	7014098	6	WASHER, Reinforcing -(only 1 shown)
20	7090187	6	WASHER, 5/16" Split Lock -(only 1 shown)
21	7091511	6	NUT, 5/16-18 Hex, GR 5 -(Was 7090196 (only 1 shown))
22	7014101	2	NUT, 1/2" Push
23	7014342	4	BEARING, Nyliner
24	7014103	1	SET SCREW, 5/16-18 x 1/4" -(slotted headless, cup point)
25	7090250	2	WASHER, 1/2" Flat
26	7014115	1	DECAL, Adjustment
27	7014062	1	DECAL, Thatcherizer

Transmission (Differential)

Note: Unless noted otherwise, use the standard torque specifications

Mfg. No: 7800557



Transmission (Differential)

REF NO	PART NO	QTY	DESCRIPTION
--	7053943	1	ASSEMBLY, Transmission (Incl. items 1 thru 30)
1	7092062	4	NUT, 5/16-18 Hex Lock -(Was 7011201)
2	7092063	1	WASHER, Cone
3	7019213	1	PULLEY, Poly-V Belt (3.5" O.D.)
4	7011724	2	WASHER, 44 x .78 x .025 Curved
5	7053942	1	ASSEMBLY, Right Housing (Incl. items 6, 7, 8, 9, 10 & 30)
6	7029034	1	HOUSING, Right Side
7	7014155	3	SCREW, 5/16-24 x 1-1/8" Rib Neck, GR 5
8	7012314	2	SEAL, 5/8" Internal Diameter
9	7029035	2	BEARING, Tapered - (Differential Housing)
10	7073963	1	BALL BEARING, 7/16 I.D., 1/1/8" O.D.
11	7016544	1	PLUG, Transmission Housing
12	7050767	1	ASSEMBLY, Input Gear
13	7050830	1	ASSEMBLY, Short Axle -(Was 7051932)
14	7012495	1	GEAR, Differential (46 Tooth)
15	7031970	2	PLATE, 46T Gear
16	7031965	2	WASHER, Thrust, 3/4" I.D.
17	7090557	4	SCREW, #10-32 x 1-1/2" Hex Head Cap GR 5
18	7011774	1	GASKET, Housing
19	7090189	3	WASHER, 5/16" Internal/External Tooth Lock
20	7051903	1	WELDMENT, Differential Bracket
21	7091825	4	SCREW, 1/4-20 x 1" Hex washer Self-Tap -(Was 7092064)
22	7012543	1	SPACER, Axle Gear
23	7050831	1	ASSEMBLY, Long Axle -(Was 7051933)
24	7021115	4	GEAR, Pinion (12 tooth)
25	7012500	4	SPACER, Pinion Gear
26	7011110	4	SHAFT, Pinion
27	7090376	4	NUT, #10-32 Hex Nyloc
28	7053939	1	ASSY, Left Housing (Incl. items 8, 9 & 29) -(Was 7053938)
29	7029033	1	HOUSING, Left
30	7024442	3	GASKET, 5/8" O. D.
--	7061017	32 oz.	* GREASE, "00" (Not Shown)

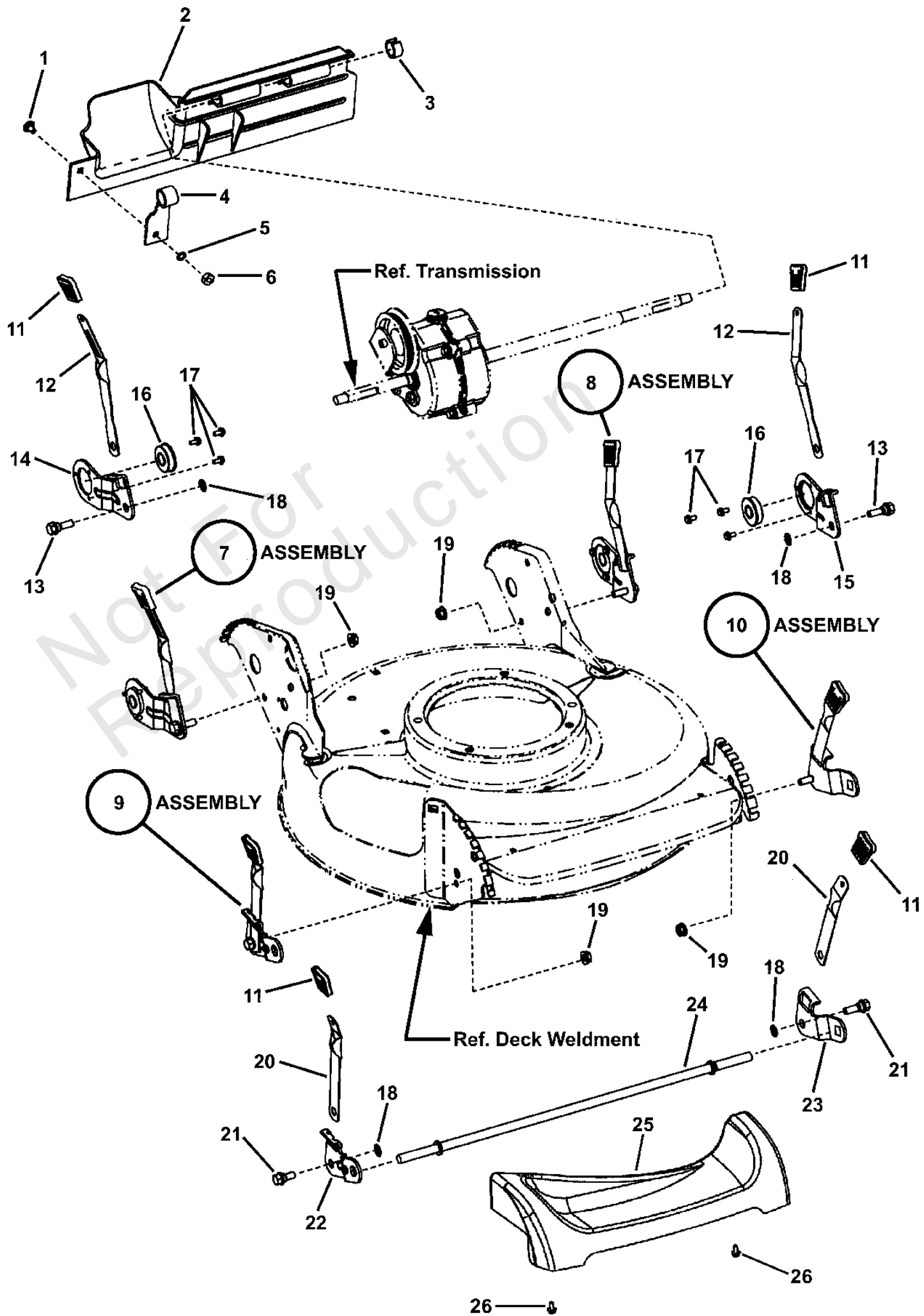
Footnotes:

NOTE: * Maximum capacity of transmission before causing leakage behind pulley is 4 oz. DO NOT OVERFILL!

Wheel Brackets & Latches (Self-Propelled)

Note: Unless noted otherwise, use the standard torque specifications

Mfg. No: 7800557



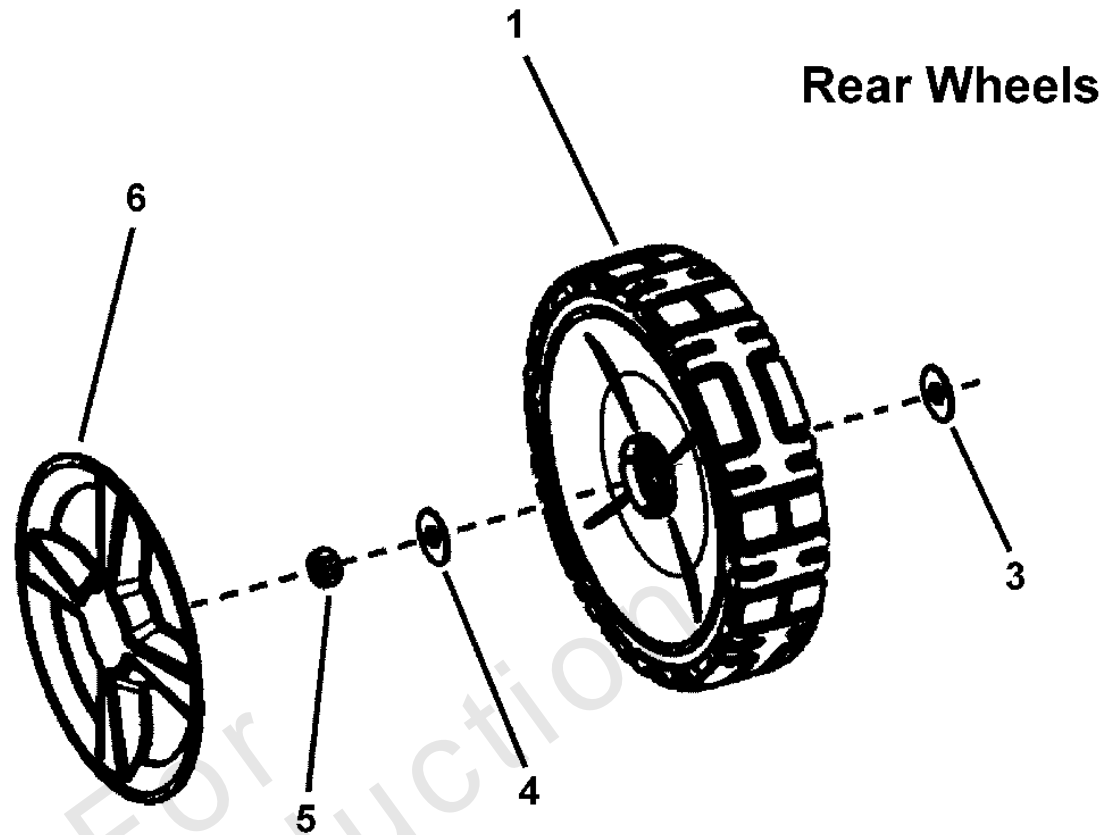
Wheel Brackets & Latches (Self-Propelled)

REF NO	PART NO	QTY	DESCRIPTION
1	7091604	1	BOLT, 1/4-20 x 1/2" Short Neck Carriage GR 5 -(Was 7090005)
2	7029008	1	FOOT GUARD, Rear
3	7023791	1	RING, Split (Black)
4	7012616	1	SUPPORT, Foot Guard
5	7091023	1	WASHER, 1/4" Internal Tooth Lock -(Was 7090053)
6	7091576	1	NUT, 1/4-20 Hex, GR 5 -(Was 7090063)
7	7054246	1	ASSY, Wheel Arm, Right Rear (S.P.) -(Was 7054230)
8	7054247	1	ASSY, Wheel Arm Left Rear Long SP21S -(Was 7054231)
9	7051886	1	ASSEMBLY, Front Right Wheel Arm
10	7500038	1	ASSEMBLY, Front Left Wheel Arm
11	7100633	4	GRIP, Height Latch - Black (1.3" Wide)
12	7035717	2	LATCH, Height Adjusting (long)
13	7011078	2	BOLT, 5/16-18 x 1" Hex Washer Face Shoulder
14	7032722	1	ARM, Wheel, Right Rear
15	7032723	1	ARM, Wheel, Left Rear
16	7012312	2	BEARING, 9/16" I.D.
17	7091012	6	SCREW, #10-32 x 3/8" Hex Washer Self-Tap
18	7011791	4	RETAINER, 5/16" Bolt
19	7091601	4	NUT, 5/16-18 Hex Flange Lock, GR 5
20	7012325	2	LATCH, Height
21	7015761	2	BOLT, 5/16-18 x 3/4" Hex Washer Face Shoulder
22	7031017	1	WHEEL ARM, R.H. Front (Round Hole)
23	7011393	1	WHEEL ARM, L.H. Front (Square Hole)
24	7100752	1	AXLE, Front, Easy Line
25	7100196	1	COVER, Front 21" walk
26	7900018	2	SCREW, Round Washer Head Torx, Hi-Lo

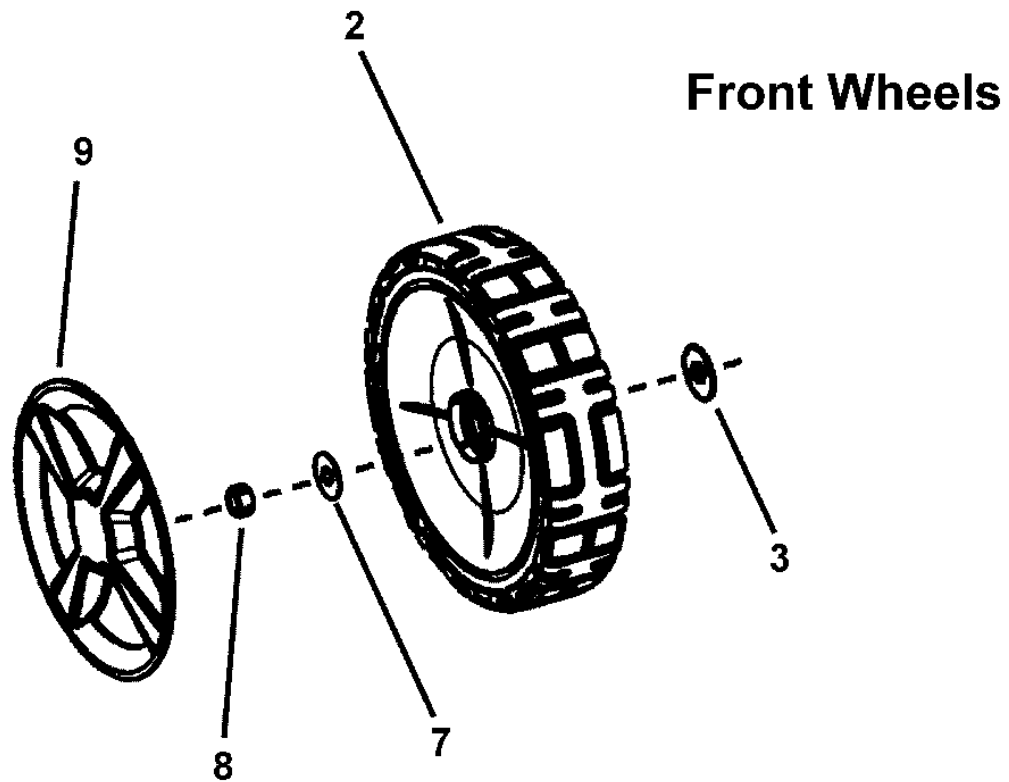
Wheels Front and Rear

Note: Unless noted otherwise, use the standard torque specifications

Mfg. No: 7800557



NOTE: Always replace wheel nut (item 5 or 8) when removing or replacing wheel.



Wheels Front and Rear

REF NO	PART NO	QTY	DESCRIPTION
1	7501078	2	ASSY, Wheel, 10 x 2" Drive w/metal insert
2	7500540	2	ASSY, Wheel, 8 x 2" Idle, Charcoal Gray -(incl. two 1-1/8" O.D. Flanged Ball Bearings (p/n 7101380))
3	7100585	2	WASHER, Shim, .875 x .531 x .060
4	7031961	2	WASHER, 7/16" Flat
5	7090377	4	NUT, 7/16-20 Hex Center Lock Jam
6	7102625	2	HUBCAP, 10" Wheel, Spoked - Cool Gray
7	722604	2	WASHER, .387 x 1" O.O. Flat
8	7091585	2	NUT, 3/8-16 Hex Center Lock
9	7101350	2	HUBCAP, 8" Wheel, Spoked - Cool Gray

Not For
Reproduction

Hardware Identification & Torque Specifications

Torque Specification Chart								
FOR STANDARD METRIC MACHINE HARDWARE (Tolerance ± 20%)								
Property Class	5.6		8.8		10.9		12.9	
	Class 5.6		Class 8.8		Class 10.9		Class 12.9	
Size Of Hardware	in/lbs	Nm.	in/lbs	Nm.	in/lbs	Nm.	in/lbs	Nm.
	ft/lbs		ft/lbs		ft/lbs		ft/lbs	
M3	5.88	.56	13.44	1.28	19.2	1.80	22.92	2.15
M4	13.44	1.28	30.72	2.90	43.44	4.10	52.56	4.95
M5	26.4	2.50	60.96	5.75	5.97	8.10	7.15	9.7
M6	44.64	4.3	7.3	9.9	10.3	14	12.1	16.5
M7	5.2	7.1	12.1	16.5	16.9	23	19.9	27
M8	7.7	10.5	17.7	24	25	34	29	40
M10	15	21	35	48	50	67	59	81
M12	26	36	61	83	86.2	117	103	140
M14	42	58	101	132	136	185	162	220
M16	64	88	147	200	210	285	250	340
M18	89	121	202	275	287	390	346	470
M20	126	171	290	390	405	550	486	660
M22	169	230	390	530	559	745	656	890
M24	217	295	497	375	708	960	840	1140
M27	320	435	733	995	1032	1400	1239	1680
M30	435	590	995	1350	1401	1900	1681	2280
M33	590	800	1349	1830	1902	2580	2278	3090
M36	759	1030	1740	2360	2441	3310	2935	3980
M39	988	1340	2249	3050	3163	4290	3798	5150

Torque Specification Chart						
FOR STANDARD MACHINE HARDWARE (Tolerance ± 20%)						
Hardware Grade	No Marks		SAE Grade 5		SAE Grade 8	
	SAE Grade 2		SAE Grade 5		SAE Grade 8	
Size Of Hardware	in/lbs	Nm.	in/lbs	Nm.	in/lbs	Nm.
	ft/lbs		ft/lbs		ft/lbs	
8-32	19	2.1	30	3.4	41	4.6
8-36	20	2.3	31	3.5	43	4.9
10-24	27	3.1	43	4.9	60	6.8
10-32	31	3.5	49	5.5	68	7.7
1/4-20	66	7.6	8	10.9	12	16.3
1/4-28	76	8.6	10	13.6	14	19.0
5/16-18	11	15.0	17	23.1	25	34.0
5/16-24	12	16.3	19	25.8	29	34.0
3/8-16	20	27.2	30	40.8	45	61.2
3/8-24	23	31.3	35	47.6	50	68.0
7/16-14	30	40.8	50	68.0	70	95.2
7/16-20	35	47.6	55	74.8	80	108.8
1/2-13	50	68.0	75	102.0	110	149.6
1/2-20	55	74.8	90	122.4	120	163.2
9/16-12	65	88.4	110	149.6	150	204.0
9/16-18	75	102.0	120	163.2	170	231.2
5/8-11	90	122.4	150	204.0	220	299.2
5/8-18	100	136	180	244.8	240	326.4
3/4-10	160	217.6	260	353.6	386	525.0
3/4-16	180	244.8	300	408.0	420	571.2
7/8-9	140	190.4	400	544.0	600	816.0
7/8-14	155	210.8	440	598.4	660	897.6
1-8	220	299.2	580	788.8	900	1,244.0
1-12	240	326.4	640	870.4	1,000	1,360.0

The guides and ruler furnished below are designed to help you select the appropriate hardware.



Nut, M8

Thread Diameter (mm)

Inside Diameter (in) Threads per inch

Nut, 1/2-16



Screw, M8- 1.25 x 25

Thread Diameter (mm) Distance between threads (mm) Body Length (mm)

Body Diameter Threads per inch Body Length (in)

Screw, 1/2- 16 x 2



Standard Hardware Sizing

When a washer or nut is identified as 1/2" (M8), this is the *Nominal size*, meaning the *inside diameter* is 1/2 inch (8mm metric thread diameter); if a second number is present it represents the *threads per inch* (distance between threads).

When bolt or capscrew is identified as 1/2 - 16 x 2" (M8 - 1.25 x 50), this means the *Nominal size*, or body diameter is 1/2 inch (8mm metric thread diameter), the second number, 16, represents the *threads per inch*, (*distance between threads*). The final number is the body length of the bolt or screw, 2 inches (50mm).

NOTES

- These torque values are to be used for all hardware excluding: locknuts, self-tapping screws, thread forming screws, sheet metal screws and socket head setscrews.
- Recommended seating torque values for locknuts:
 - for prevailing torque locknuts - use 65% of grade 5 torques.
 - for flange whizlock nuts and screws - use 135% of grade 5 torques.
- Unless otherwise noted on assembly drawings, all torque values must meet this specification.

Common Hardware Types

Hex Head Capscrew



Washer



Carriage Bolt



Hex Nut

Wrench & Fastener Size Guide

1/4" Bolt or Nut Wrench—7/16"	5/16" Bolt or Nut Wrench—1/2"	3/8" Bolt or Nut Wrench—9/16"	7/16" Bolt or Nut Wrench (Bolt)—5/8" Wrench (Nut)—11/16"	1/2" Bolt or Nut Wrench—3/4"
M6 Bolt or Nut Wrench—10mm	M8 Bolt or Nut Wrench—13mm	M10 Bolt or Nut Wrench—17mm	M12 Bolt or Nut Wrench—19mm	M14 Bolt or Nut Wrench—22mm

