



Attachment Illustrated Parts List

Attachment

Mfg. No.	Description
7600101	Catcher, Single Bag, 28" & 33"

Briggs & Stratton Power Products Group, L.L.C.

P.O. Box 702
Milwaukee, WI 53201-0702 USA

BRIGGSandSTRATTON.com

© Copyright 2012 by Briggs & Stratton Corporation
Milwaukee, WI, USA. All rights reserved

Manual Part No. 1756143

Revision -

Rev. Date: 11/5/2012

Not for
Reproduction

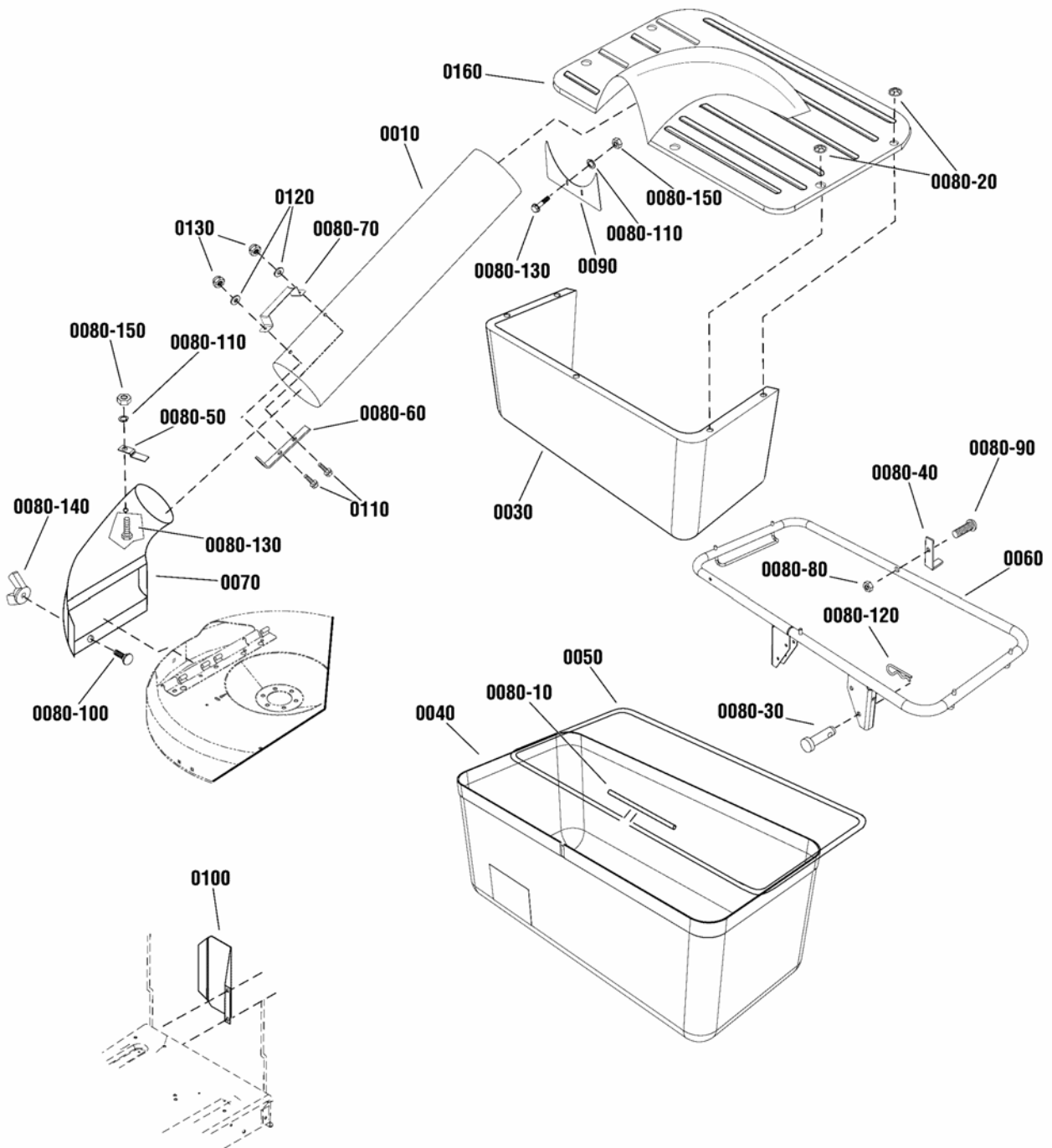
PRODUCT COMPONENTS	PAGES
Single Bag Catcher	4
Torque Specification Chart	Inside Back Cover

Not for
Reproduction

Single Bag Catcher

NOTE: Unless noted otherwise,
use the standard hardware torque
specification chart.

7600101



The above parts group applies to the following Mfg. Nos.:

7600101 - Catcher

Single Bag Catcher

REF NO	PART NO.	QTY.	DESCRIPTION
0010	7014517YP	1	TUBE, Grass
0030	7016108YP	1	SKIRT, Dust
0040	7019251YP	1	GRASS BAG, Single
0050	7037758YP	1	ROD, Bag Support
0060	7047973YP	1	FRAME, Single Bag Catcher
0070	7057816YP	1	BAGGER, Adapter
--	7060313	1	*HARDWARE BAG
0080-10	7012556YP	1	CONNECTOR, Rod
0080-20	7029840YP	5	PALNUT, Washer
0080-30	7029841YP	2	PIN, Clevis 5/16 X 1.69
0080-40	7031725YP	1	LATCH, Grass Catcher
0080-50	7031951YP	1	LATCH, Tube
0080-60	7031952YP	1	BASE, Tube Handle
0080-70	7037745YP	1	HANDLE, Tube
0080-80	7090376YP	1	NUT, Hex Lock 10-32 W/Nylon Insert
0080-90	7090532YP	1	SCREW, Hex Head Machine 10-32 X 1-3/8
0080-100	7091303YP	1	Bolt, Carriage, Short Neck, 5/16 X 1
0080-110	7091314YP	3	WASHER, Internal Tooth Lock 5/16
0080-120	7091503SM	2	PIN, Hair 3/32 x 1.6
0080-130	703101	3	Bolt, Carriage, Short Neck, 1/4-20 x 3/4
0080-140	7091537YP	1	WING, Locknut, 5/16-18
0080-150	703127	3	NUT, 1/4-20
0090	7063287YP	1	SHIELD, Grass Catcher
0100	7071677YP	1	GUARD, Muffler
0110	7090909YP	2	CAPSCREW, Hex Head, 1/4-20 X 1 1/2
0120	1921319YP	2	WASHER, Flat
0130	7091705YP	2	NUT, Lock, 1/4
0160	7501833YP	1	GRASS CONTAINER, Top

Footnotes

Note* Not a serviceable part, order individual parts.

The above parts group applies to the following Mfg. Nos.:

7600101 - Catcher

Not for
Reproduction

Hardware Identification & Torque Specifications

Torque Specification Chart								
FOR STANDARD METRIC MACHINE HARDWARE (Tolerance ± 20%)								
Property Class	5.6		8.8		10.9		12.9	
	Class 5.6		Class 8.8		Class 10.9		Class 12.9	
Size Of Hardware	in/lbs		in/lbs		in/lbs		in/lbs	
	ft/lbs	Nm.	ft/lbs	Nm.	ft/lbs	Nm.	ft/lbs	Nm.
M3	5.88	.56	13.44	1.28	19.2	1.80	22.92	2.15
M4	13.44	1.28	30.72	2.90	43.44	4.10	52.56	4.95
M5	26.4	2.50	60.96	5.75	5.97	8.10	7.15	9.7
M6	44.64	4.3	7.3	9.9	10.3	14	12.1	16.5
M7	5.2	7.1	12.1	16.5	16.9	23	19.9	27
M8	7.7	10.5	17.7	24	25	34	29	40
M10	15	21	35	48	50	67	59	81
M12	26	36	61	83	86.2	117	103	140
M14	42	58	101	132	136	185	162	220
M16	64	88	147	200	210	285	250	340
M18	89	121	202	275	287	390	346	470
M20	126	171	290	390	405	550	486	660
M22	169	230	390	530	559	745	656	890
M24	217	295	497	375	708	960	840	1140
M27	320	435	733	995	1032	1400	1239	1680
M30	435	590	995	1350	1401	1900	1681	2280
M33	590	800	1349	1830	1902	2580	2278	3090
M36	759	1030	1740	2360	2441	3310	2935	3980
M39	988	1340	2249	3050	3163	4290	3798	5150

Torque Specification Chart						
FOR STANDARD MACHINE HARDWARE (Tolerance ± 20%)						
Hardware Grade	No Marks		SAE Grade 5		SAE Grade 8	
	SAE Grade 2		SAE Grade 5		SAE Grade 8	
Size Of Hardware	in/lbs		in/lbs		in/lbs	
	ft/lbs	Nm.	ft/lbs	Nm.	ft/lbs	Nm.
8-32	19	2.1	30	3.4	41	4.6
8-36	20	2.3	31	3.5	43	4.9
10-24	27	3.1	43	4.9	60	6.8
10-32	31	3.5	49	5.5	68	7.7
1/4-20	66	7.6	8	10.9	12	16.3
1/4-28	76	8.6	10	13.6	14	19.0
5/16-18	11	15.0	17	23.1	25	34.0
5/16-24	12	16.3	19	25.8	29	34.0
3/8-16	20	27.2	30	40.8	45	61.2
3/8-24	23	31.3	35	47.6	50	68.0
7/16-14	30	40.8	50	68.0	70	95.2
7/16-20	35	47.6	55	74.8	80	108.8
1/2-13	50	68.0	75	102.0	110	149.6
1/2-20	55	74.8	90	122.4	120	163.2
9/16-12	65	88.4	110	149.6	150	204.0
9/16-18	75	102.0	120	163.2	170	231.2
5/8-11	90	122.4	150	204.0	220	299.2
5/8-18	100	136	180	244.8	240	326.4
3/4-10	160	217.6	260	353.6	386	525.0
3/4-16	180	244.8	300	408.0	420	571.2
7/8-9	140	190.4	400	544.0	600	816.0
7/8-14	155	210.8	440	598.4	660	897.6
1-8	220	299.2	580	788.8	900	1,244.0
1-12	240	326.4	640	870.4	1,000	1,360.0

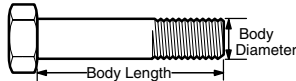
The guides and ruler furnished below are designed to help you select the appropriate hardware.



Nut, M8

Thread Diameter (mm)
Inside Diameter (in)
Threads per inch

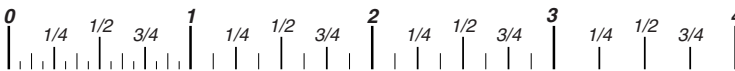
Nut, 1/2-16



Screw, M8- 1.25 x 25

Thread Diameter (mm)
Body Diameter
Distance between threads (mm)
Threads per inch
Body Length (mm)
Body Length (in)

Screw, 1/2- 16 x 2



Standard Hardware Sizing

When a washer or nut is identified as **1/2"** (M8), this is the *Nominal size*, meaning the *inside diameter* is 1/2 inch (8mm metric thread diameter); if a second number is present it represents the *threads per inch* (distance between threads).

When bolt or capscrew is identified as **1/2 - 16 x 2"** (M8 - 1.25 x 50), this means the *Nominal size*, or body diameter is 1/2 inch (8mm metric thread diameter), the second number, 16, represents the *threads per inch*, (*1.25 thread diameter*). The final number is the body length of the bolt or screw, 2 inches (50mm).

NOTES

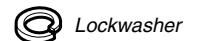
- These torque values are to be used for all hardware excluding: locknuts, self-tapping screws, thread forming screws, sheet metal screws and socket head setscrews.
- Recommended seating torque values for locknuts:
 - for prevailing torque locknuts - use 65% of grade 5 torques.
 - for flange whizlock nuts and screws - use 135% of grade 5 torques.
- Unless otherwise noted on assembly drawings, all torque values must meet this specification.

Common Hardware Types

Hex Head Capscrew



Washer



Lockwasher

Carriage Bolt



Hex Nut

Wrench & Fastener Size Guide



1/4" Bolt or Nut
Wrench—7/16"



5/16" Bolt or Nut
Wrench—1/2"



3/8" Bolt or Nut
Wrench—9/16"



7/16" Bolt or Nut
Wrench (Bolt)—5/8"
Wrench (Nut)—11/16"



1/2" Bolt or Nut
Wrench—3/4"

M6 Bolt or Nut
Wrench—10mm

M8 Bolt or Nut
Wrench—13mm

M10 Bolt or Nut
Wrench—17mm

M12 Bolt or Nut
Wrench—19mm

M14 Bolt or Nut
Wrench—22mm

Not for
Reproduction

**IT IS THE POLICY OF BRIGGS & STRATTON CORP TO IMPROVE ITS PRODUCTS
WHENEVER IT IS POSSIBLE AND PRACTICAL TO DO SO. WE RESERVE THE RIGHT TO
MAKE CHANGES OR ADD IMPROVEMENTS AT ANY TIME WITHOUT INCURRING ANY
OBLIGATION TO MAKE SUCH CHANGES ON PRODUCTS.**

Briggs & Stratton Power Products Group, L.L.C.

P.O. Box 702
Milwaukee, WI 53201-0702 USA

BRIGGSandSTRATTON.com	Murray.com
Snapper.com	AllisChalmersLawn.com
SimplicityMFG.com	AGCOLawn.com
MasseyLawn.com	