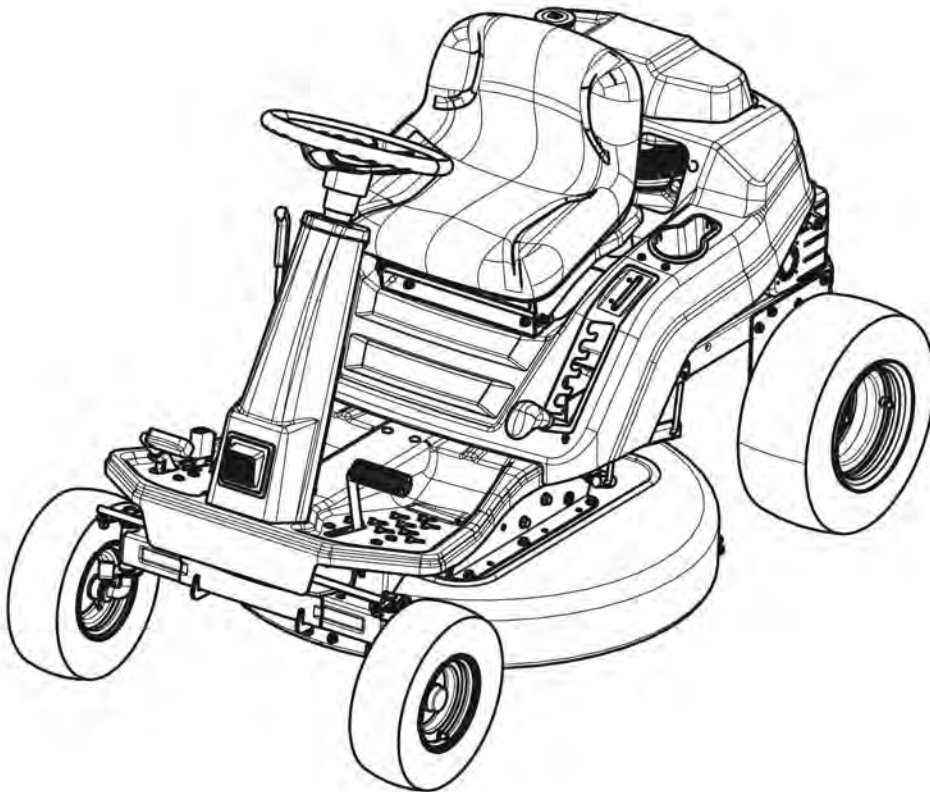


Parts Manual for
SNAPPER®

**REAR ENGINE RIDER
HYDRO DRIVE 33" 15.5 TP
RE SERIES**

<i>Model No.</i>	<i>Description</i>
7800952-00	RE210

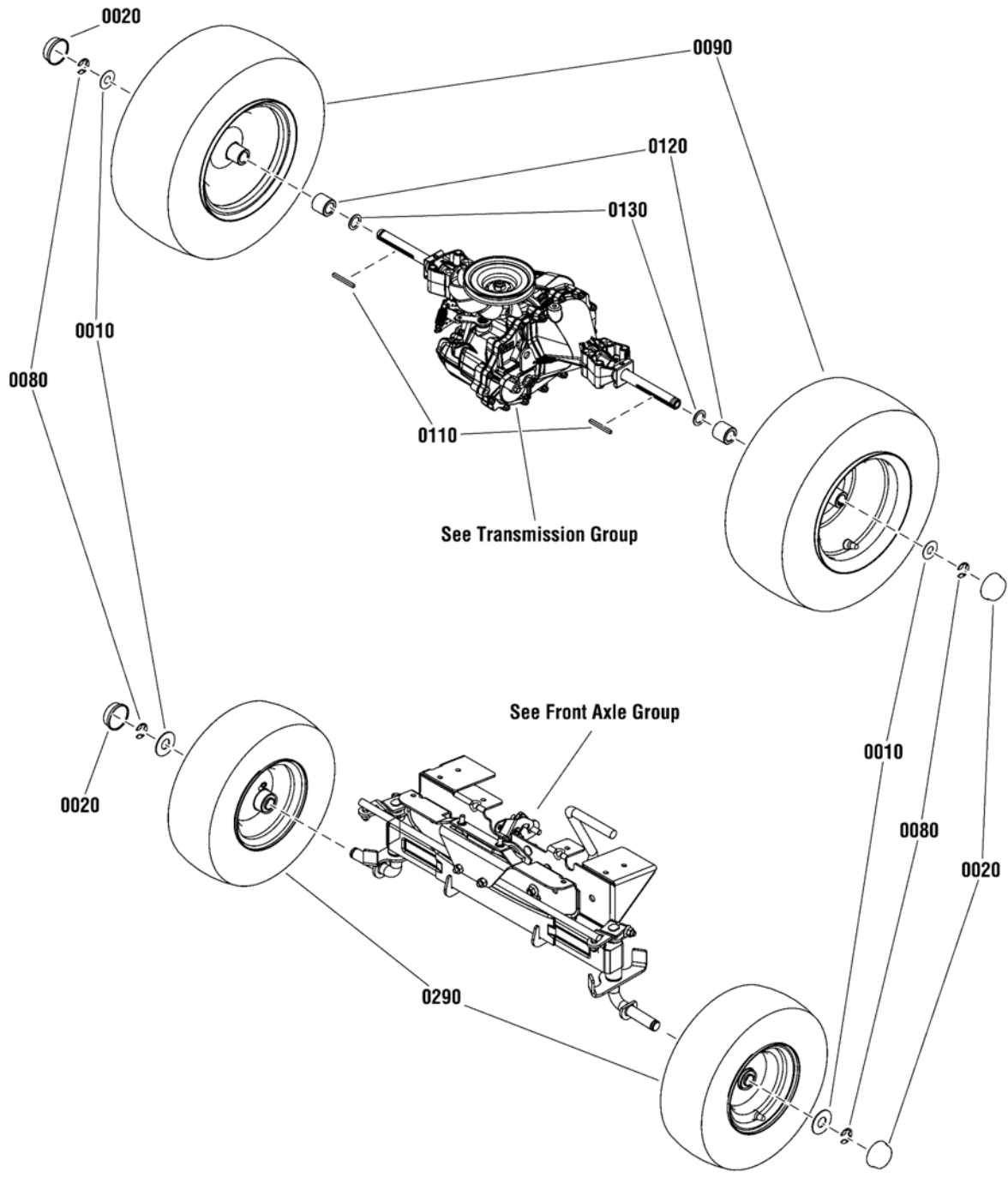


Not for
Reproduction

PAGE	GROUP
4	Wheel Group
6	Steering Tower Group
8	Front Axle Group 13" Wheels
10	Console & Gas Tank Group
12	Seat Group
14	Main Frame Group
18	Engine Group
20	Hydro Drive Group
22	Rail Assembly
24	Spindle & Housing Assembly
26	33" Deck Group
28	33" Deck Assembly
30	Decals
32	Electrical Group

Not for
Reproduction

Wheel Group

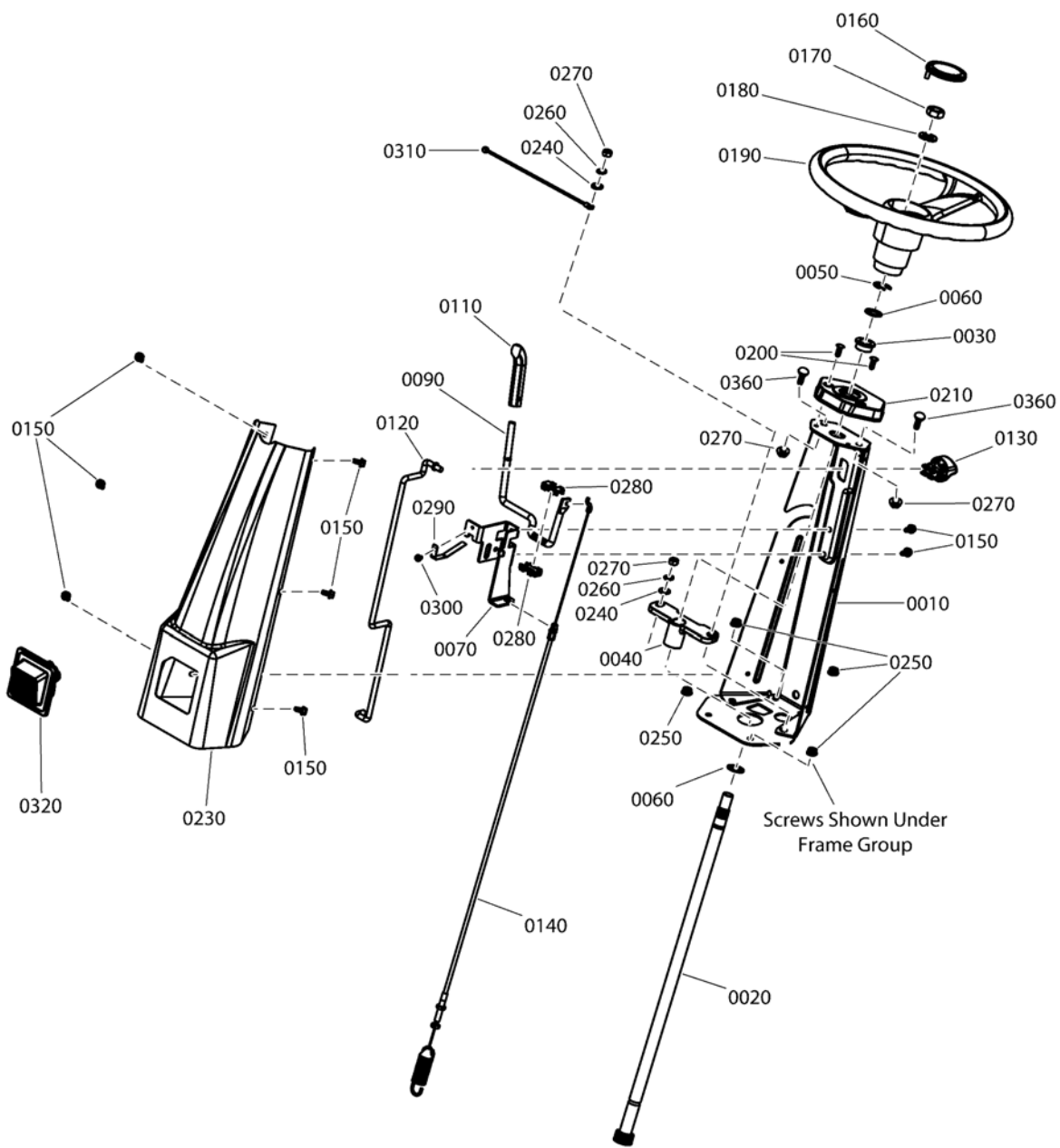


Item	Part No	Qty	Description
0010	722620	2	WASHER, .765 ID, 1.8 OD, .0598 Thk, Flat ZP
0020	094618MA	2	HUB CAP
0080	0011X3MA	2	E-RING, .750D-.050T
0090	7106092YP	2	ASSEMBLY, Rear Wheel, 16 X 6.50-8, 2P K358
0110	720258	2	KEY, 3/16 Square x 2 Long
0120	704204	2	SPACER, Axle, .77" ID, 1.25" OD, 1.15" Long, Zinc/Clear
0130	7010935SM	2	WASHER, .77 x 1.13 x .06, Flat
0290	7106090YP	2	ASSEMBLY, Front Wheel, 13" X 5-6
0290-10	7012234SM	2	VALVE, Stem & Cap (Not Shown)
0290-20	7011807YP	4	BEARING, Ball, Flanged (3/4 ID, 1-3/8 OD) (Not Shown)
0290-50	703957	2	GREASE FITTING, 1/4-28X31/32 Zinc/Clear (Not Shown)

Not for
Reproduction

Footnotes:

Steering Tower Group

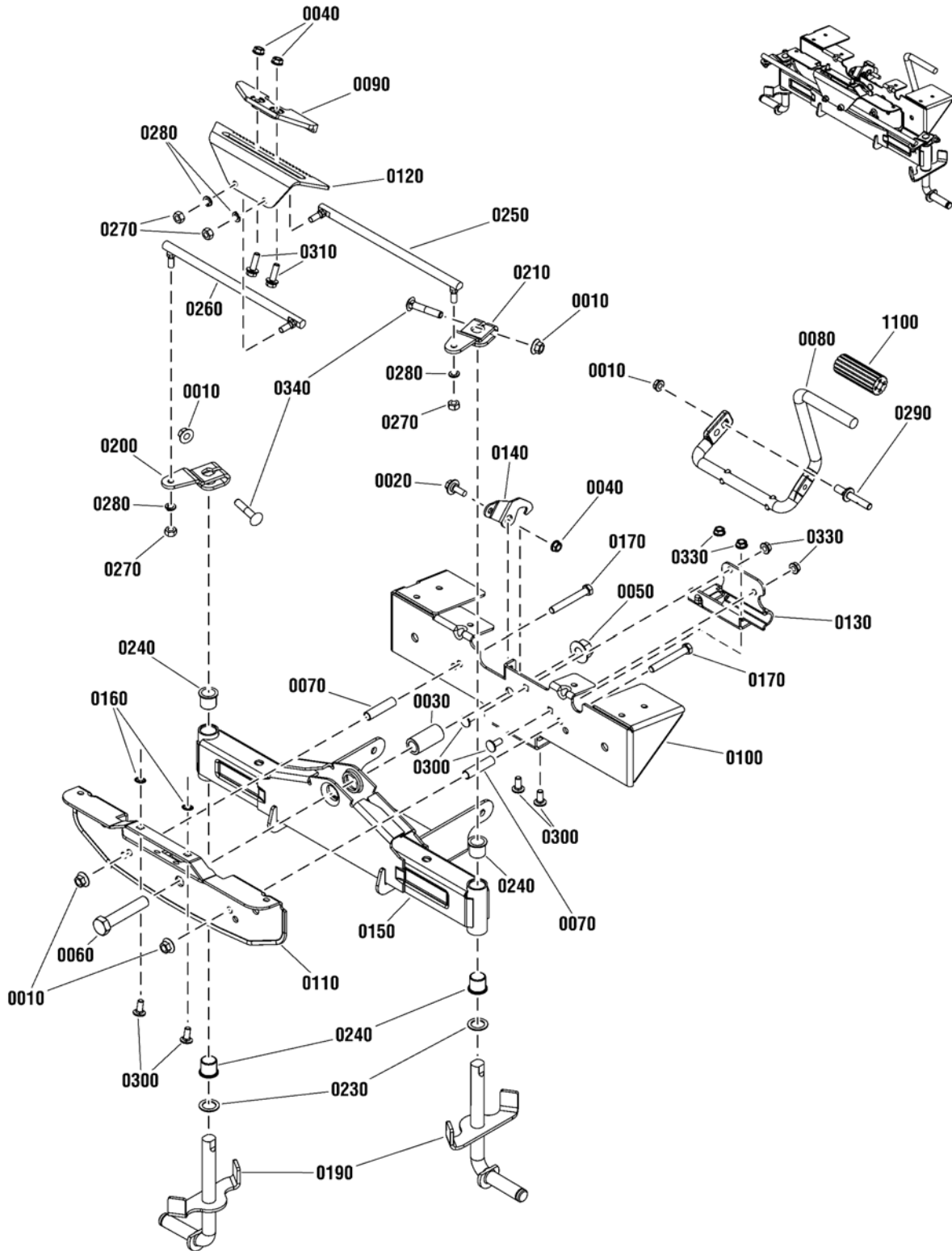


Item	Part No	Qty	Description
0010	7301293BMYP	1	SUPPORT, Steering Column
0020	7105572YP	1	SHAFT, Steering
0030	1729665SM	1	BUSHING, Steering, 3/4 ID
0040	7105751YP	1	BEARING, Steering Shaft, 3/4 ID
0050	0011X3MA	1	E-RING, .750D x .050T
0060	703151	2	WASHER, .766 ID X 1.06 OD X .07, Flat, Zinc/Clear
0070	7301375BMYP	1	BRACKET, Blade Engagement Handle
0090	7105731BMYP	1	LEVER, PTO Engagement
0110	7023657YP	1	GRIP, Handle, 3/8
0120	7105654YP	1	ROD, Parking Brake
0130	7105745YP	1	KNOB, Parking Brake
0140	7105566YP	1	CABLE, Blade Engagement, 40.82"
0150	703953	8	SCREW, 1/4-20 X 5/8, Torx Pan Head Self-Tapping, Zinc/Clear
0160	1725024SM	1	CAP, Steering Wheel, Plain
0170	1960576SM	1	NUT, 5/8-18, Hex Lock, Thin ESNA Light, Black
0180	703580	1	WASHER, 5/8" (0.66 ID x 1.12 OD x .11 Thk) Zinc/Clear
0190	7105776YP	1	STEERING WHEEL, 13 DIA, 5.87 Dish (for 7800921-00 Model)
0190	706337	1	STEERING WHEEL, 13 DIA, 5.87 Deep Dish (for 7800935-00 Model)
0200	7091272YP	2	FASTENER, 1/4 x 3/4 Ratchet
0210	7105597YP	1	COVER, Steering Tower/Support
0230	7301260DYP	1	TOWER, Steering, Red
0240	703350	2	WASHER, 5/16, Flat SAE, Zinc/Clear
0250	703409	4	NUT, 5/16-18, Serated Lock Flange, GR5, Zinc/Clear
0260	703116	2	WASHER, .32 X .58 X .08, Split Lock, YZ
0270	703465	4	NUT, 5/16-18, GRB, Zinc/Clear
0280	7106027YP	2	BUSHING, PTO Lever, Plastic
0290	7301373YP	1	PADDLE, PTO Lever
0300	704061	1	SCREW, 10-32 x 1/4 Hex Washer Self-Tap, BZ
0310	7106051YP	1	WIRE, RER Head Light Ground
0320	7105923YP	1	ASSEMBLY, Head Light
0320-30	----	1	* LAMP, 12VAC 25-30 Lumen LED (1156 Socket)(Not Shown)
0360	703447	2	BOLT, 5/16-18 X .625, Carriage, GR5, Zinc/Clear

Footnotes:

Note* See your local hardware store for replacement bulbs.

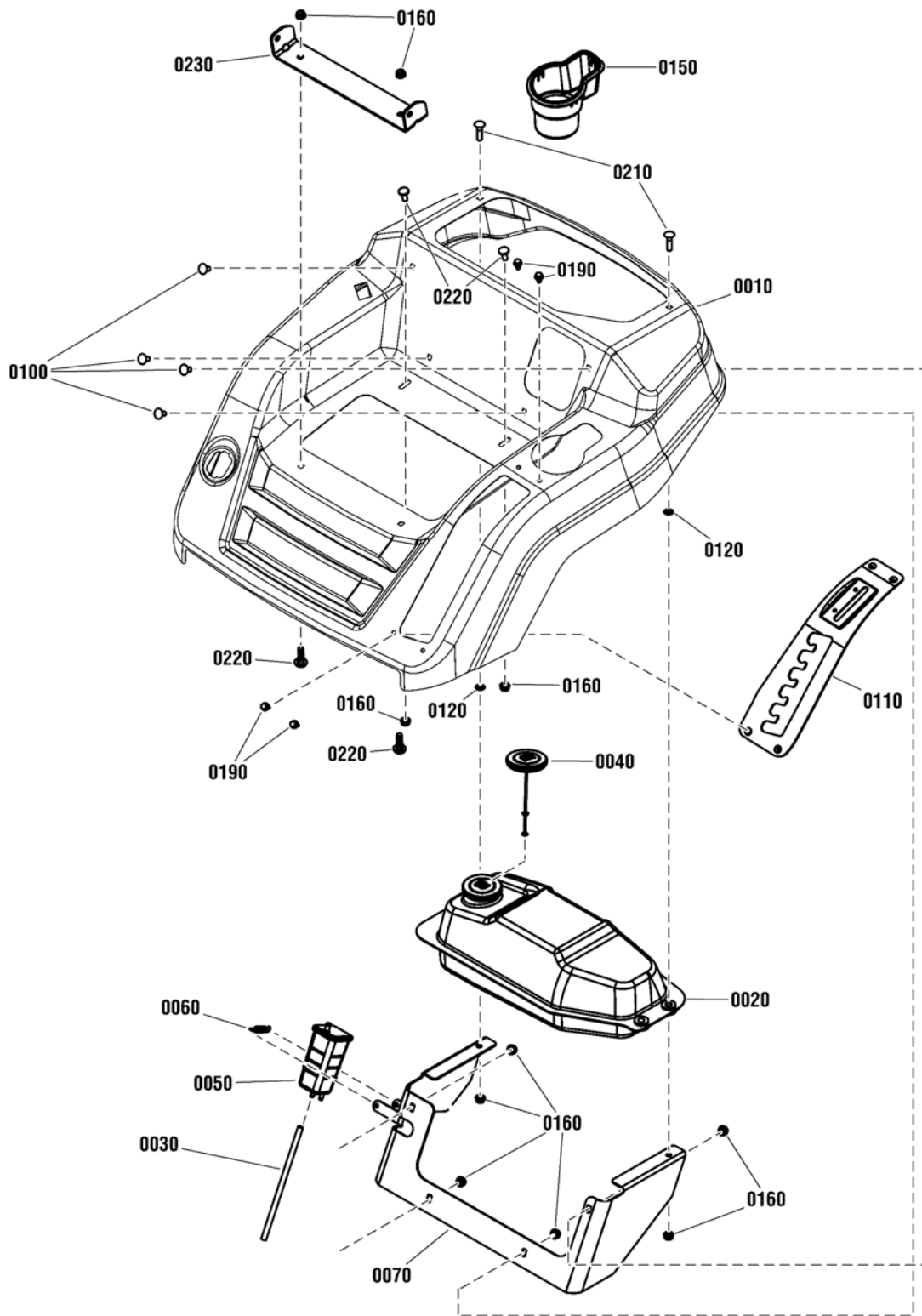
Front Axle Group 13" Wheels



Item	Part No	Qty	Description
0010	703893	5	NUT, 3/8-16 Hex Flange Center Lock, Zinc Plated
0020	1716654SM	1	BOLT, 5/16-18 X .75, .50 Shoulder G5 YEL
0030	1738193YP	1	SPACER, .641 ID X.980 OD X 2.0 Long
0040	704067	3	NUT, 5/16-18 Hex Flange Two-Way Lk Ga
0050	2860646SM	1	NUT, 5/8-11, Hex Flange Two Way Lock, Yellow
0060	2860744SM	1	SCREW, 5/8-11 x 3-1/4 Hex Head Cap, GR5, Yellow
0070	7026595YP	2	SPACER, .495 OD X .390 ID X 2.038 Long
0080	7105142YP	1	PEDAL, Brake
0090	7105857YP	1	PLATE, Rack Guide
0100	7301259YP	1	BRACKET, Rear Axle
0110	7301282YP	1	BRACKET, Front Axle
0120	7301283YP	1	RACK, Steering
0130	7301317YP	1	BRACKET, Brake Pedal
0140	7301351YP	1	PLATE, Park Brake
0150	7400323YP	1	WELDMENT, Axle
0160	703297	2	RETAINER, 5/16, GR5 Zinc/Clear
0170	703133	2	SCREW, 3/8-16 X 2.750, Hex Head Cap, GR5, Zinc/Clear
0190	7400335BMYP	2	WELDMENT, RER Hydro Spindle
0200	7301337BMYP	1	ARM, RH Steering
0210	7301338BMYP	1	ARM, LH Steering
0230	7010935SM	2	WASHER, .77 x 1.13 x .06, Flat
0240	2176440SM	4	BUSHING, .765 ID, .885 OD, .877 LG, Flanged Nylon
0250	7105916YP	1	LINK, Drag 10 Lg, 90° X 5/16-24 Ball Joints, LH
0260	7105148YP	1	LINK, Shift, 10 Lg, 90° X 5/16-24 Ball Joints, RH
0270	703331	4	NUT, 5/16-24, Hex, GR5, Zinc/Clear
0280	703116	4	WASHER, .32 X .58 X .08, Split Lock, YZ
0290	703956	1	STUD, 3/8-16 X 2.625, Special Shoulder, GR5
0300	703185	6	BOLT, 5/16-18 x 3/4, Carriage, Short Neck, G5, Zinc/Clear
0310	703410	2	BOLT, 5/16-18 X 1.0 Serrated Flange, GR5, Zinc/Clear
0330	703409	4	NUT, 5/16-18, Serated Lock Flange, GR5, Zinc/Clear
0340	703879	2	BOLT, Carriage 3/8-16X1-3/4 GR5 YZ
1100	1727261SM	1	PEDAL, Brake Rubber

Footnotes:

Console & Gas Tank Group

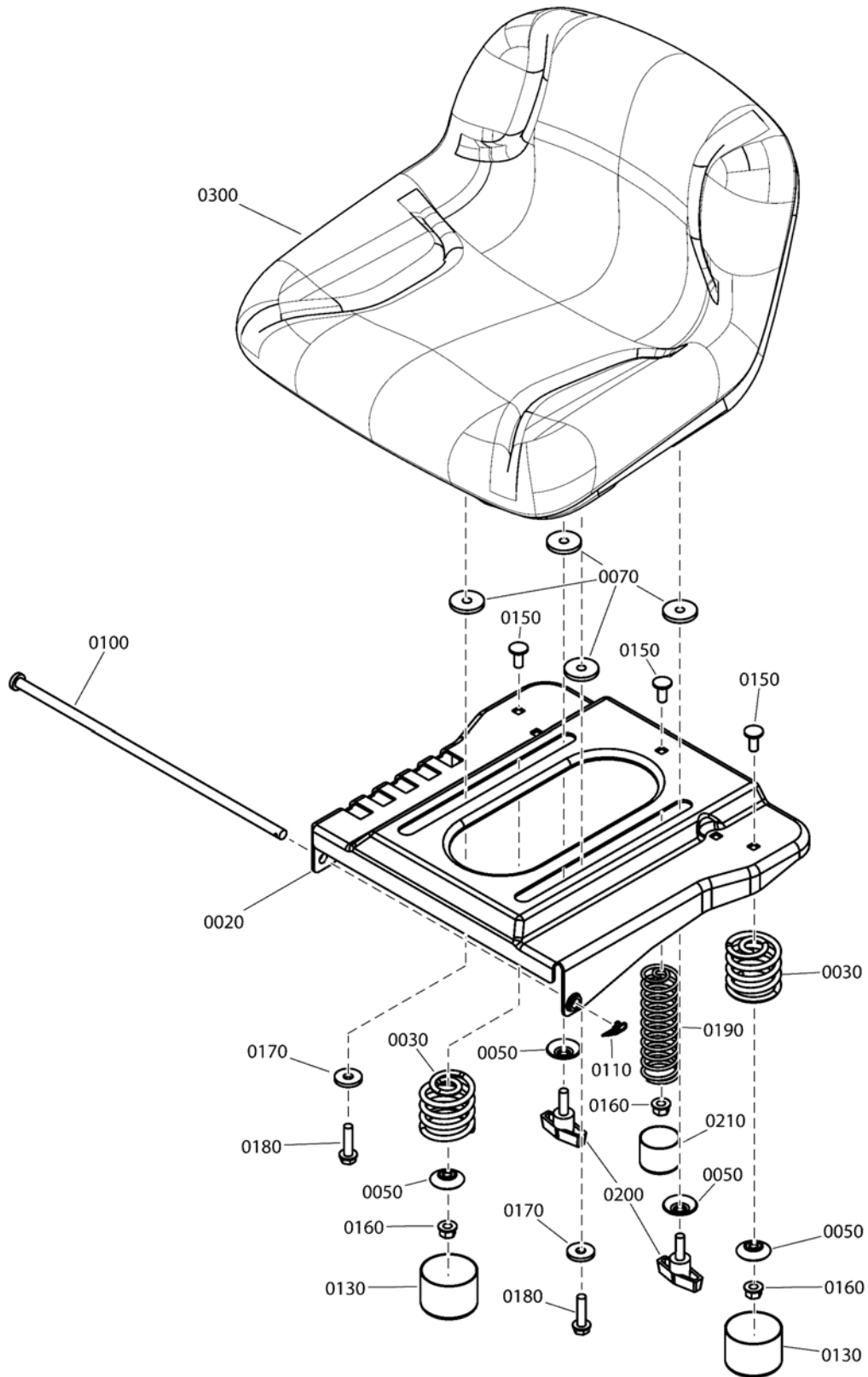


Item	Part No	Qty	Description
0010	7301327DYP	1	CONSOLE, Seat/Controls - Hydro, Red
0020	7105576YP	1	ASSEMBLY, Fuel Tank
0040	7105682YP	1	ASSEMBLY, Fuel Cap, Non-Vented
0030	7106041YP	1	HOSE, Vapor, 10" Long
0050	7104634YP	1	CANISTER, Carbon, 140CC
0060	7104930YP	1	SPRING, Tension, 1.95 FWD React
0070	7301342BMYP	1	BRACKET, Fuel Tank Mounting
0100	703125	4	BOLT, 5/16-18 X .625, Carriage, GR5, Zinc/Clear
0110	7301262BMYP	1	PLATE, HOC Detent
0120	703297	2	RETAINER, 5/16, GR5 Zinc/Clear
0150	7105766YP	1	CUP HOLDER
0160	703409	8	NUT, 5/16-18, Serated Lock Flange, GR5, Zinc/Clear
0190	703953	4	SCREW, 1/4-20 X 5/8, Torx Pan Head Self-Tapping, Zinc/Clear
0210	703446	2	BOLT, 5/16-18 X 1.25, Carriage, GR5, Zinc/Clear
0220	703185	2	BOLT, 5/16-18 x 3/4, Carriage, Short Neck, G5, Zinc/Clear
0230	1750968BMYP	1	BRACKET, Seat Pivot

Not for
Reproduction

Footnotes:

Seat Group

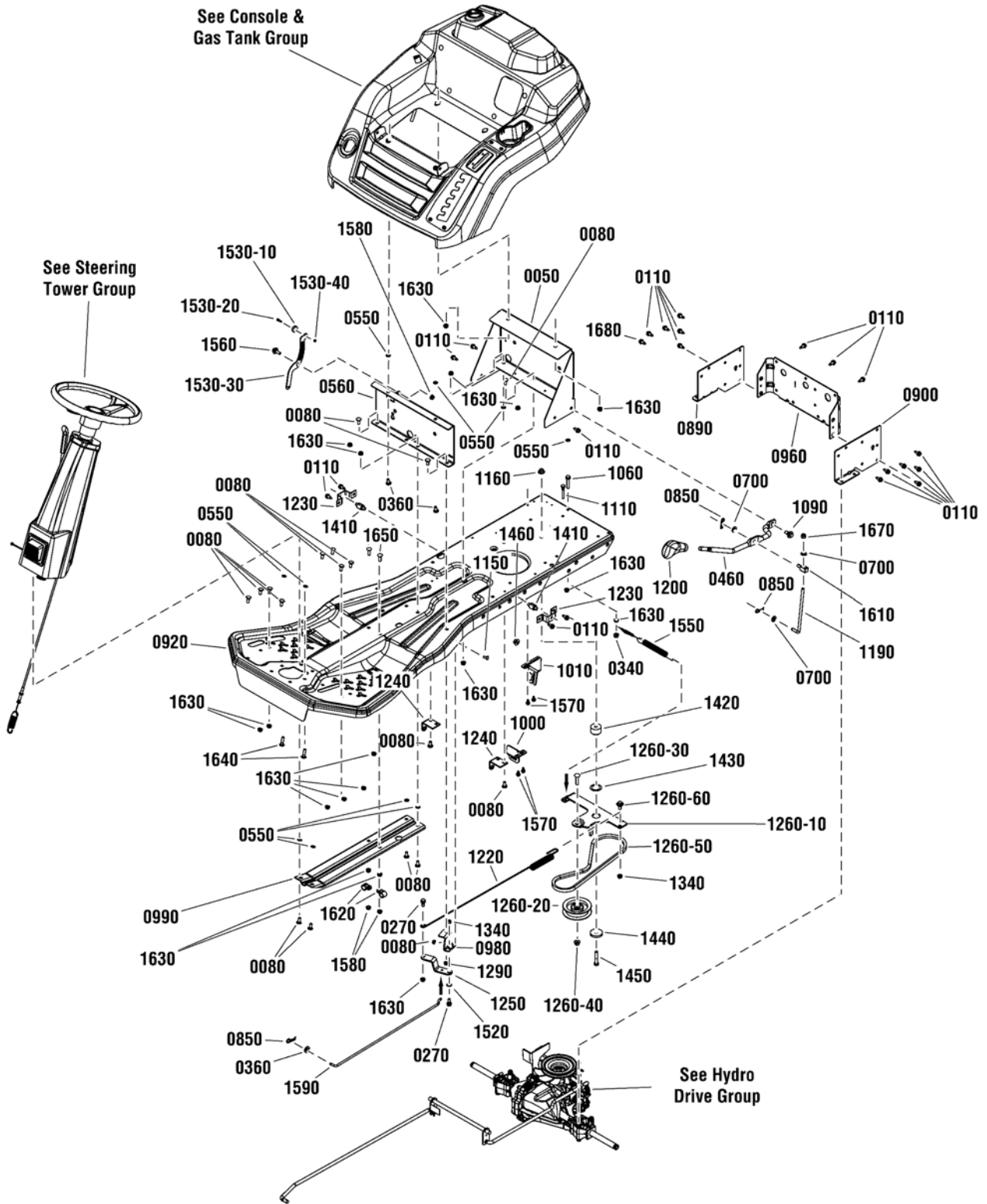


Item	Part No	Qty	Description
0020	7301219BMYP	1	SUPPORT, Seat
0030	1704728SM	2	SPRING, Compression, 19/32 x 2
0050	1709256SM	2	WASHER, Spring, 5/16 ID x 1-1/4 OD
0070	1731300SM	4	SPACER, 0.32 ID x 1-1/2 OD x 3/10 THK Powdered Metal Yellow
0100	1751493YP	1	ROD, Seat Pivot, .375 X 13.44 to .109 Hole
0110	703355	1	PIN, 3/8 Cotter Self Locking, Zinc/Clear
0130	1704724SM	2	COVER, Spring 2" Id X 1-1/2", Black Vinyl
0150	703185	3	BOLT, 5/16-18 x 3/4, Carriage, Short Neck, G5, Zinc/Clear
0160	703115	3	NUT, 5/16-18, Flange Nylock, GR F, Zinc/Clear
0170	703298	2	WASHER, 5/16 (.34 ID X 1" OD X .13 THK) GR5, Zinc/Clear
0180	1930595SM	2	SCREW, Hex Cap Flange Whiz Lock, 5/16-18 x 1-1/4, G5
0190	7106013YP	1	SPRING, Compression, 4.57" Free Length
0200	1752056YP	2	KNOB, 5/16-18 x 3/4 Two Prong
0210	5023274SM	1	CAP, Vinyl, 1.375 X 1
0300	1754214YP	1	SEAT, 11" High, 18.8" Wide (Black)

Not for
Reproduction

Footnotes:

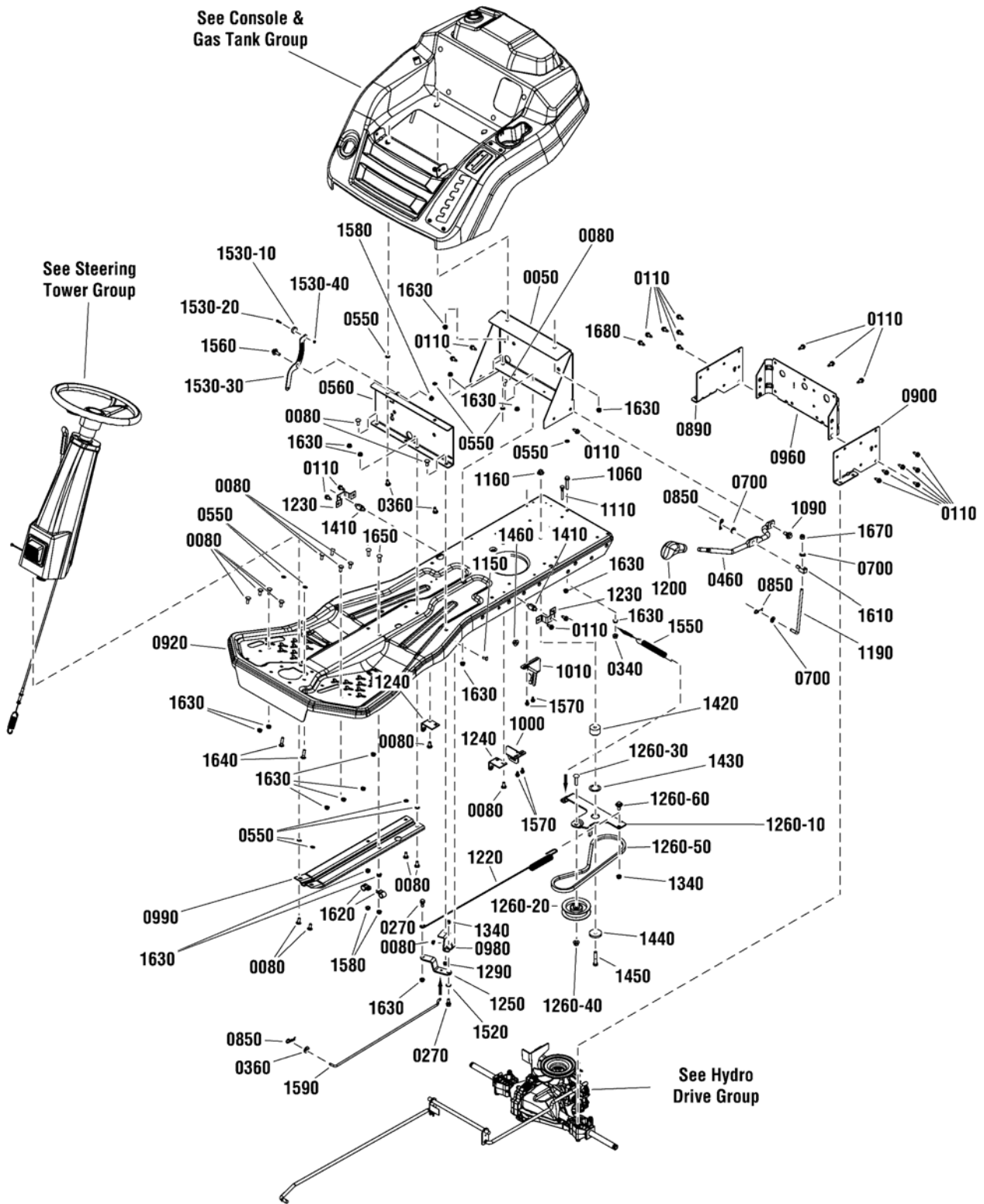
Main Frame Group



Item	Part No	Qty	Description
0050	7301222BMYP	1	BRACKET, Console Support
0080	703185	19	BOLT, 5/16-18 x 3/4, Carriage, Short Neck, G5, Zinc/Clear
0110	703949	21	SCREW, 5/16-18 X .625, Hex Washer Head, Thread Roll, Zinc/Clear
0270	703839	2	BOLT, 5/16-18 X .750, Hex Washer Head Shoulder, Zinc/Clear
0340	703115	1	NUT, 5/16-18, Flange Nylock, GR F, Zinc/Clear
0360	703332	1	WASHER, 1/4, Flat, GR5 Zinc/Clear
0460	7105822BMYP	1	ROD, Deck Lift, RER
0550	703297	10	RETAINER, 5/16, GR5 Zinc/Clear
0560	7301330BMYP	1	BRACKET, Seat Hinge Support
0700	703590	3	WASHER, 3/8 (.406 X .816 X .65), Flat, Zinc/Clear
0850	703300	3	PIN, Hair, 3/32 x 1-5/8, GR5, Zinc/Clear
0890	7301306DYP	1	PLATE, Hydro Side, RH, RED
0900	7301309DYP	1	PLATE, Hydro Side, LH, RED
0920	7301248DYP	1	MAIN FRAME, Hydro, RER Red
0960	7301297DYP	1	PLATE, Rear Hitch, Red
0980	7301348BMYP	1	BRACKET, Brake/De-Clutch Pivot Anchor
0990	7301349BMYP	1	BRACE, Frame, RER
1000	7301353BMYP	1	BRACKET, RMO Switch
1010	7301379BMYP	1	BRACKET, Hydro Park Brake Switch
1060	703217	1	SCREW, 5/16-18 X1.50, Hex Head Cap, Full Thread, GR5, ZC/CL
1090	702315	1	BOLT, 3/8-16 X .88, .513 Dia. Shoulder, GR2, Zinc/Clear
1110	721293	1	SCREW, 5/16-18 X .5 w/.75" Unthreaded Guide, YZ
1150	703841	1	BOLT, 1/4-20 X .625, Carriage, Zinc/Clear
1160	1960339SM	1	NUT-HEX FLANGE 3/8-16 MAC LK LARGE BLK
1190	7105735YP	1	LINKAGE, 3/8 Deck Rod
1200	7105767YP	1	KNOB, HOC/Speed Selector, 1/2 Hole
1220	7105894YP	1	SPRING, 26.06" Long, 29 Coil, RER Hydro Brake
1230	7301336BMYP	2	BRACKET, Rear Deck Lift
1240	7301346BMYP	2	BRACKET, Forward/Reverse Pivot
1250	706365	1	BRACKET, Brake/De-Clutch Pivot
1260-10	7301341BMYP	1	BRACKET, Idler
1260-20	1728000SM	1	PULLEY, Idler, 3-1/8 OD, 3/8 ID
1260-30	1931352SM	1	BOLT, Carriage 3/8-16X1.500 G5 BLK
1260-40	703158	1	NUT, 3/8-16, Hex Flange, ESNA, Zinc/Clear
1260-50	7105750YP	1	BELT, Hydro Drive, RER (38.35 EL, A Section)
1260-60	1732426SM	1	BOLT, Shoulder, 5/16-18 x .13/16, 1/2" Thread Length
1290	703233	1	NUT, 1/4-20 Hex Flange Lock, GR 5, Zinc/Clear
1340	703164	2	NUT, 5/16-18, Hex Center Lock, GRB, Zinc/Clear
1410	7105736YP	2	SWIVEL, .390 Dia., Thru Hole
1420	1729007SM	1	SPACER, .387 I.D. x 1.50 O.D. x 1.04 Long (Powdered Metal) Yellow
1430	7031079YP	1	WASHER, Thrust (1.37 ID, 1.625 OD)
1440	1960071SM	1	WASHER, 3/8 x 1-1/4 x 1/4, Black
1450	703589	1	CAPSCREW, 3/8-16 x 2, Hex Head, GR5, Zinc/Clear
1460	703893	1	NUT, 3/8-16 Hex Flange Center Lock, Zinc Plated

Footnotes:

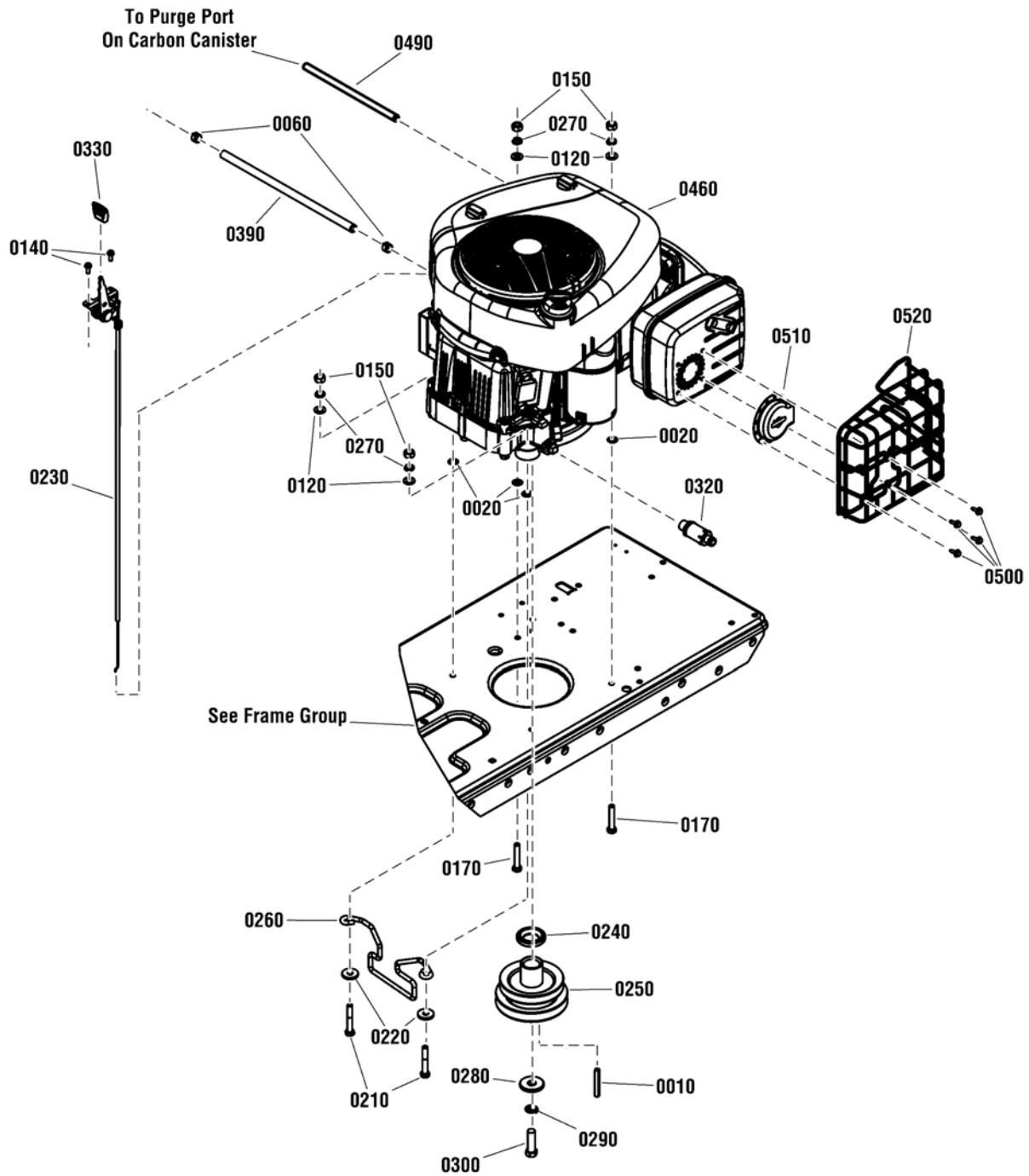
Main Frame Group



Item	Part No	Qty	Description
1520	704205	1	WASHER, .507 ID X .708 OD X .020 Thk, Shim Plain
1530-10	7106025YP	1	ROLLER, .265 X 1.312 X .344
1530-20	703960	1	BOLT, 10-24 X .750, Shoulder, GR8, Zinc/Clear
1530-30	7301367BMYP	1	PLATE, Roller OPC
1530-40	7091267SM	1	NUT, 10-24, Hex Center Lock, BZ
1550	7013885YP	1	SPRING, Clutch / Brake
1560	1716654SM	1	BOLT, 5/16-18 X .75, .50 Shoulder G5 YEL
1570	703054	4	SCREW, 1/4-20 x 5/8, Hex Washer Head, Thread Roll, Zinc/Clear
1580	1935048SM	3	NUT, 5/16-18 Hex Flange Two-Way Lk Ga
1590	7105667YP	1	ROD, Clutch
1610	7072495SM	1	SWIVEL, 3/8 W/ Thru Hole, YZ
1620	7900020SM	2	CLIP, Harness, 5/8"
1630	703409	20	NUT, 5/16-18, Serated Lock Flange, GR5, Zinc/Clear
1640	703446	2	BOLT, 5/16-18 X 1.25, Carriage, GR5, Zinc/Clear
1650	703483	2	BOLT, 5/16-18 X 1 Carriage, GR5, Zinc/Clear
1670	703117	1	NUT, 3/8-16, Nylock, GR5, Zinc/Clear
1680	1924856SM	1	SCREW, 5/16-18 x 1/2, Hex Washer Head Taptite, Blk

Not for
Reproduction

Footnotes:

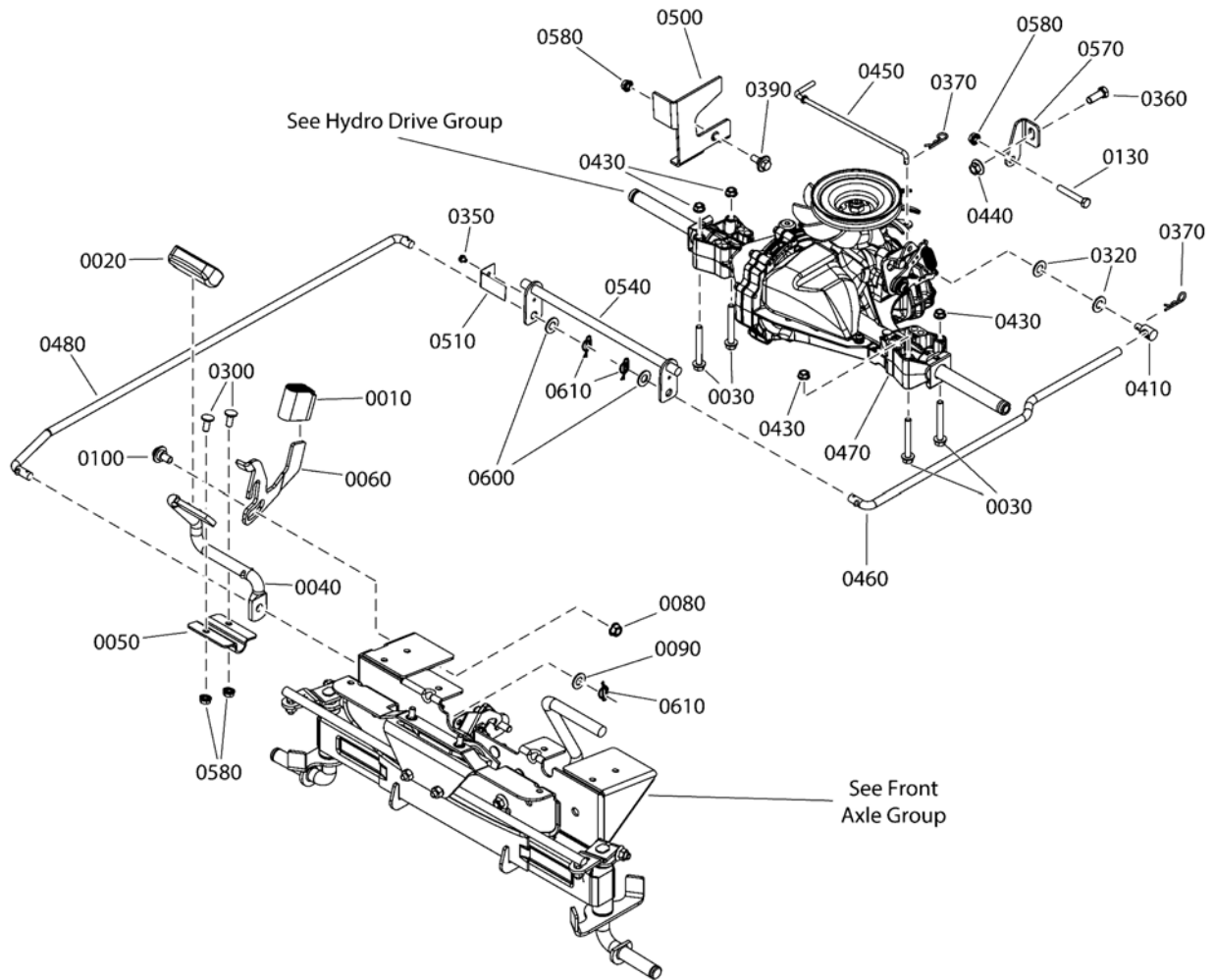


Item	Part No	Qty	Description
0010	703890	1	KEY, 1/4 Square x 2 Long
0020	703297	4	RETAINER, 5/16 X .625, Push Nut, GR 5, Zinc/Clear
0060	791850	2	CLAMP, .490 ID, .312 Wide, Fuel Hose, Band Type, Green
0120	703350	4	WASHER, 5/16, Flat SAE, Zinc/Clear
0140	704060	2	SCREW, 10-24 x 1/2" Hex Washer Self-Tap, Torx, ZC/CL
0150	703331	2	NUT, 5/16-24, Hex, GR5, Zinc/Clear
0170	7091513YP	2	SCREW, 5/16-24 X 1.75, Hex Head Cap, GR5, Zinc/Clear
0210	704056	2	SCREW, 5/16-24 X 2, Hex Head Cap, GR5, Zinc/Clear
0220	703298	2	WASHER, 5/16 (.34 ID X 1 OD X .13 THK) GR5, Zinc/Clear
0230	7105872YP	1	ASSEMBLY, Throttle Control, 27.6" Long, 1.6" Throw
0240	093077MA	1	SPACER, Engine, 1.015 ID, 1.77 OD, .340" Thick
0250	7105938YP	1	PULLEY, Double Stack 4 & 4.5" OD, 1" ID, 3.255 Tall
0260	7106040BMYP	1	GUIDE, Belt, 1/4" Wire, 1" X 4" ID, 3.55" Tall, 7.66" Mount
0270	703116	2	WASHER, .32 X .58 X .08, Split Lock, Zinc/Clear
0280	704053	1	WASHER, .468 ID X 1.5 OD X .19 THK, Special, Zinc/Clear
0290	704007	1	WASHER, 7/16, Split-Lock, Zinc/Clear
0300	01X140MA	1	BOLT, 7/16-20 X 1.5, Hex Patch Lock, G5, ZP
0320	7027972SM	1	ASSEMBLY, Oil Drain Valve, 2.775" Long
0330	7106008YP	1	KNOB, Molded Paddle, Black
0390	7200116YP	1	HOSE, Fuel, Low Perm, 1/4" ID X 14"
0460	31S777-0001-G1	1	* ENGINE, B&S 15.5, Mod. 31S777-0001-G1
0490	7106041YP	1	HOSE, Vapor, 10" Long
0500	690367	4	* SCREW, #8-18X.53, Tapping Washer HD, B&S
0510	7905036	1	* DEFLECTOR, Muffler, 3.062 Dia. 10 Hole Pattern, B&S
0520	264347	1	* GUARD, Muffler

Footnotes:

Note: * Purchase engine parts from engine manufacture dealer.

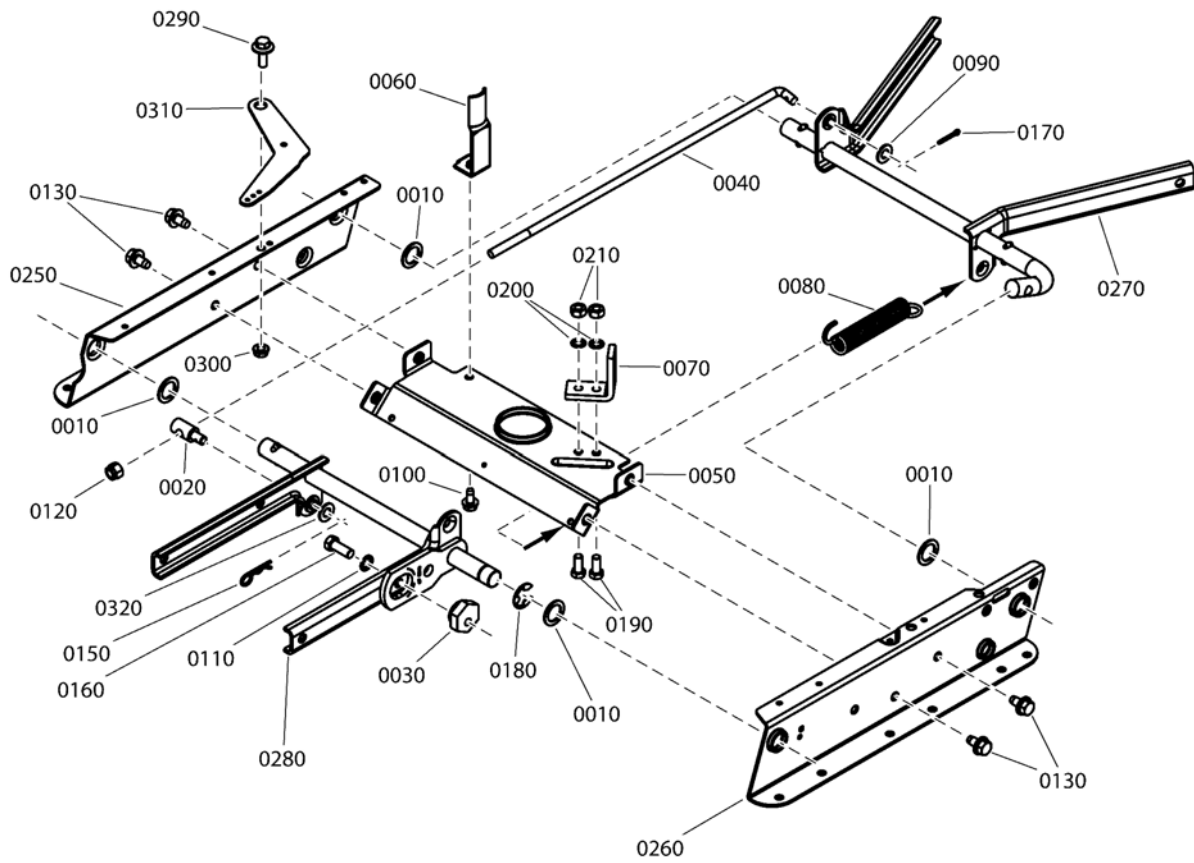
Hydro Drive Group



Item	Part No	Qty	Description
0010	1727259SM	1	PAD, Reverse Foot Pedal, Black Rubber
0020	1721675SM	1	PAD, Forward Foot Pedal, Black Rubber
0030	1960586SM	4	SCREW, 5/16-18 x 2-1/2, Hex Flange Whiz Lock, Black
0040	7105754BMYP	1	PEDAL, FWD/REV, RER Hydro
0050	7301357BMYP	1	BRACKET, FWD/REV Pivot
0060	7301359BMYP	1	BRACKET, Reverse Pedal
0080	703333	1	NUT, 3/8-16, Flanged Lock, GR5, Zinc/Clear
0090	703183	1	WASHER, .922 X .065 X .065, Flat, Zinc/Clear
0100	704206	1	BOLT, 3/8-16 X .925 DIA, Shoulder, GR2, Zinc/Clear
0130	703867	1	SCREW, 5/16-18 X 2.0, Hex Head Cap, GR 5, Zinc/Clear
0300	703185	2	BOLT, 5/16-18 x 3/4, Carriage, Short Neck, G5, Zinc/Clear
0320	703590	2	WASHER, .406, Flat, Zinc/Clear
0350	7090981YP	1	SCREW, 10-32 x 1/4 Hex Washer Self-Tap, BZ
0360	703407	1	SCREW, 3/8-16 X 1.0, Hex Head Cap, GR5, Zinc/Clear
0370	1722460SM	2	HAIRPIN, Quick, .080 Wire, 1.19LG, Zinc/Clear
0390	009X67MA	1	BOLT, 5/16-18, .499 OD .246 LG Shoulder
0410	885076YP	1	ADJUSTING NUT, 7/16-14, .313 X .32 Shoulder, .156 Pin Hole, Zinc/Clear
0430	1935048SM	4	NUT, 5/16-18 Hex Flange Two-Way Lk Ga
0440	1960339SM	1	NUT, 3/8-16, Hex Flanged Center Lock, Black
0450	7105648YP	1	ROD, Roll Release, Hydro, RER
0460	7105664YP	1	ROD, Drive
0470	7105749YP	1	TRANSMISSION, T2 Hydro (Hydro-Gear T2-BDBE-4X3C-15X1)
0480	7105753YP	1	ROD, Drive, For/Rev, 30.91" Long
0500	7301335BMYP	1	BRACKET, Brake Lever
0510	7301354YP	1	BRACKET, Switch Actuator
0540	7400331BMYP	1	WELDMENT, For/Rev Cross Over
0570	7301310BMYP	1	BRACKET, Hydro Torque Strap, RER
0580	703409	4	NUT, 5/16-18, Serated Lock Flange, GR5, Zinc/Clear
0600	703183	2	WASHER, .922 X .065 X .065, Flat, Zinc/Clear
0610	7091594SM	3	COTTER PIN, Self Locking, For 1/2" Dia. Pin w/1/16" Hole, YZ

Footnotes:

Rail Assembly

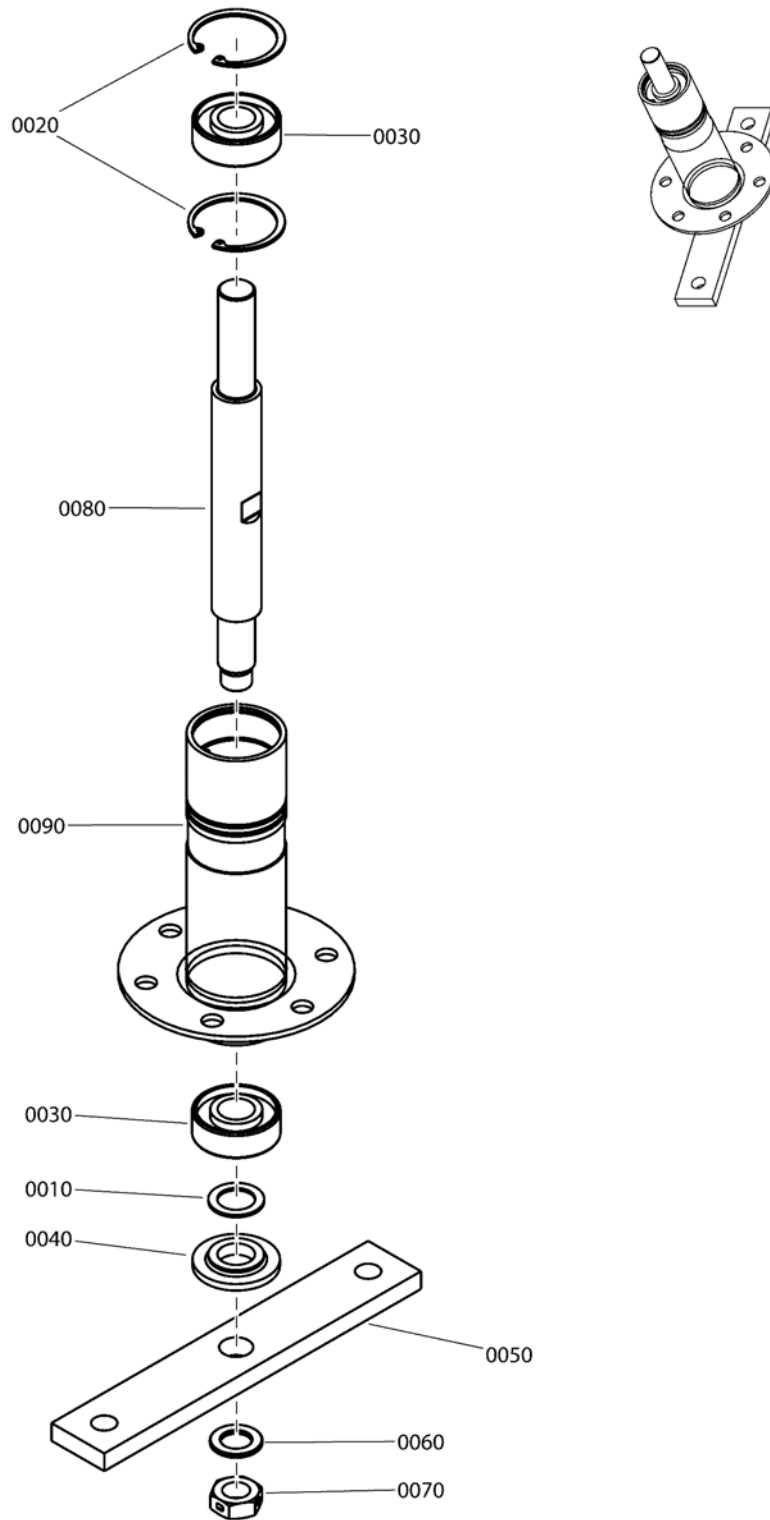


Item	Part No	Qty	Description
0010	7010935SM	4	WASHER, .77 x 1.13 x .06, Flat
0020	7011231SM	1	SWIVEL, 3/8 w/thru hole, Special
0030	7015447YP	1	ECCENTRIC, Leveling
0040	7016122YP	1	ROD, Leveling (3/4-24 thread)
0050	7031838YP	1	BRACE, Top Rail
0060	7031855YP	1	GUIDE, Belt
0070	706321	1	ANCHOR
0080	7046163YP	1	SPRING, Assist
0090	703590	2	WASHER, 3/8 (.406 X .816 X .65), Flat, Zinc/Clear
0100	703949	1	SCREW, 5/16-18 x 5/8 Hex Washer Self-Tap, BP
0110	703930	1	WASHER, 3/8 Internal Tooth Lock, BZ
0120	703901	1	NUT, 3/8-24 Hex Nyloc ZP
0130	7091198SM	4	SCREW, 3/8-16 x 5/8 Hex Washer Self-Tap, BP
0150	703300	1	PIN, Hair, 3/32 x 1-5/8, GR5, Zinc/Clear
0160	001X20MA	1	CAPSCREW, 3/8-24 x 1, Hex Head, Zinc
0170	703958	1	PIN, 1/8 X 0.75, Cotter, Zinc/Clear
0180	0011X3MA	1	E-RING, .750D x .050T
0190	703336	2	SCREW, 5/16-24 x 3/4 Hex Head Cap, GR 5
0200	7090391SM	2	WASHER, 5/16, Internal Lock, Zinc/Clear
0210	703331	2	NUT, 5/16-24, Hex, GR5, Zinc/Clear
0250	7301328YP	1	RAIL, Deck Lift RH
0260	7301329YP	1	RAIL, Deck Lift LH
0270	7400324YP	1	WELDMENT, Rear Lift Arm, RER-RE
0280	7400328YP	1	WELDMENT, Front Lift Arm, Adjustable
0290	1716654SM	1	BOLT, 5/16-18 X 0.75, .50 Shoulder, G5 YZ
0300	704067	1	NUT, 5/16-18 Hex Flange Two-Way Lk Ga
0310	7301366YP	1	PLATE, Brake OPC
0320	1960103SM	1	WASHER, 3/8 Flat, Black

Not for
Reproduction

Footnotes:

Spindle & Housing Assembly

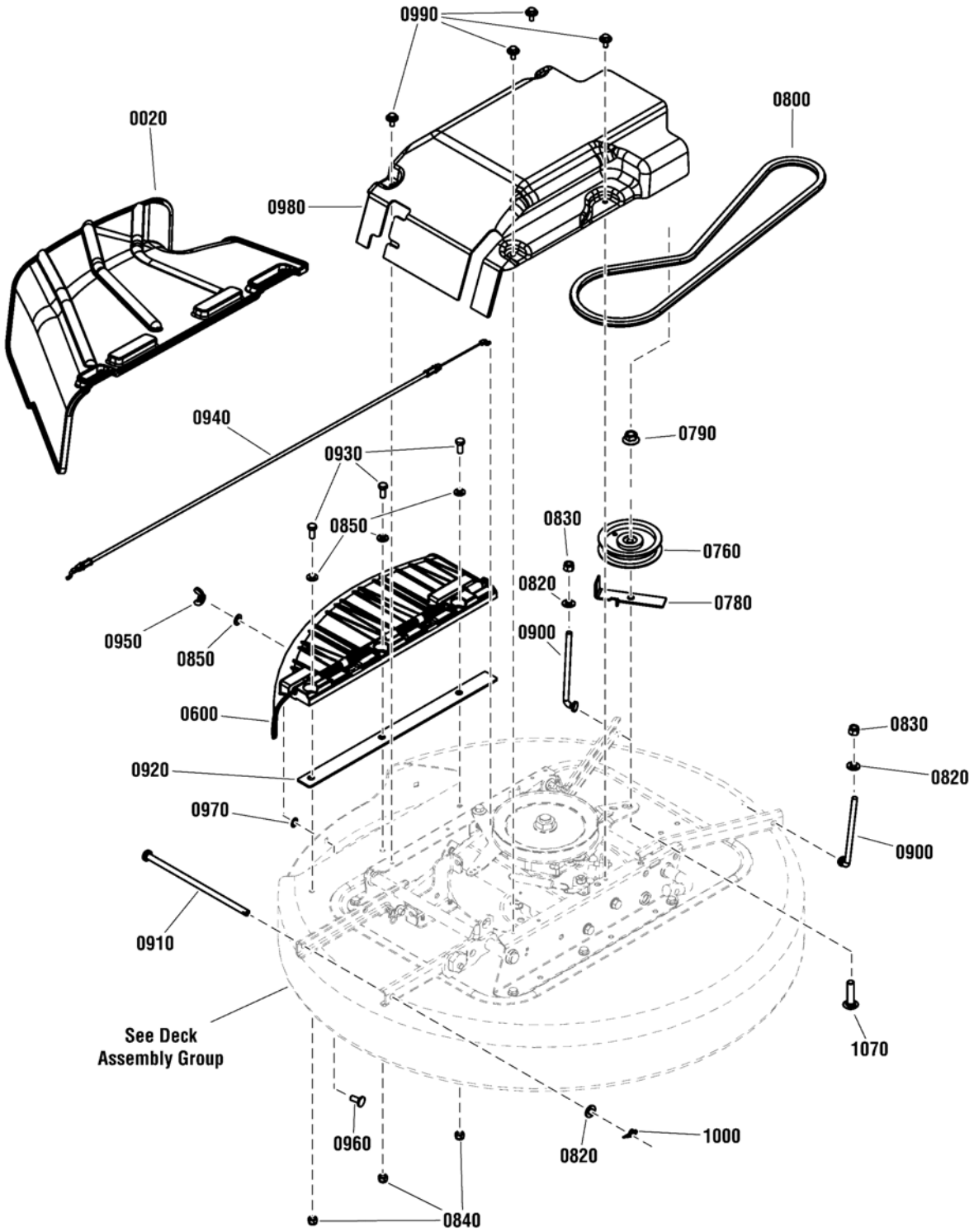


Item	Part No	Qty	Description
0010	7010935SM	1	WASHER, .77 x 1.13 x .06, Flat
0020	7012491SM	2	RING, 1.85", Internal Retaining
0030	7013313SM	2	BEARING, Ball, 1.78 OD, .750 ID, .610 Wide
0040	7014407SM	1	WASHER, Spindle, .75 ID, 1.75 OD, .28 Thick, PM
0050	7031184YP	1	HOLDER, Blade (3 Hole)
0060	7044782YP	1	SPACER, Blade Centering (.63 X 1.05 X .094)
0070	7090356YP	1	NUT, 5/8-18 Hex Center Lock Jam, GR5, ZP
0080	7200147YP	1	SHAFT, Spindle, 9.737"
0090	7400327YP	1	WELDMENT, Spindle Housing (7" Tall)

Not for
Reproduction

Footnotes:

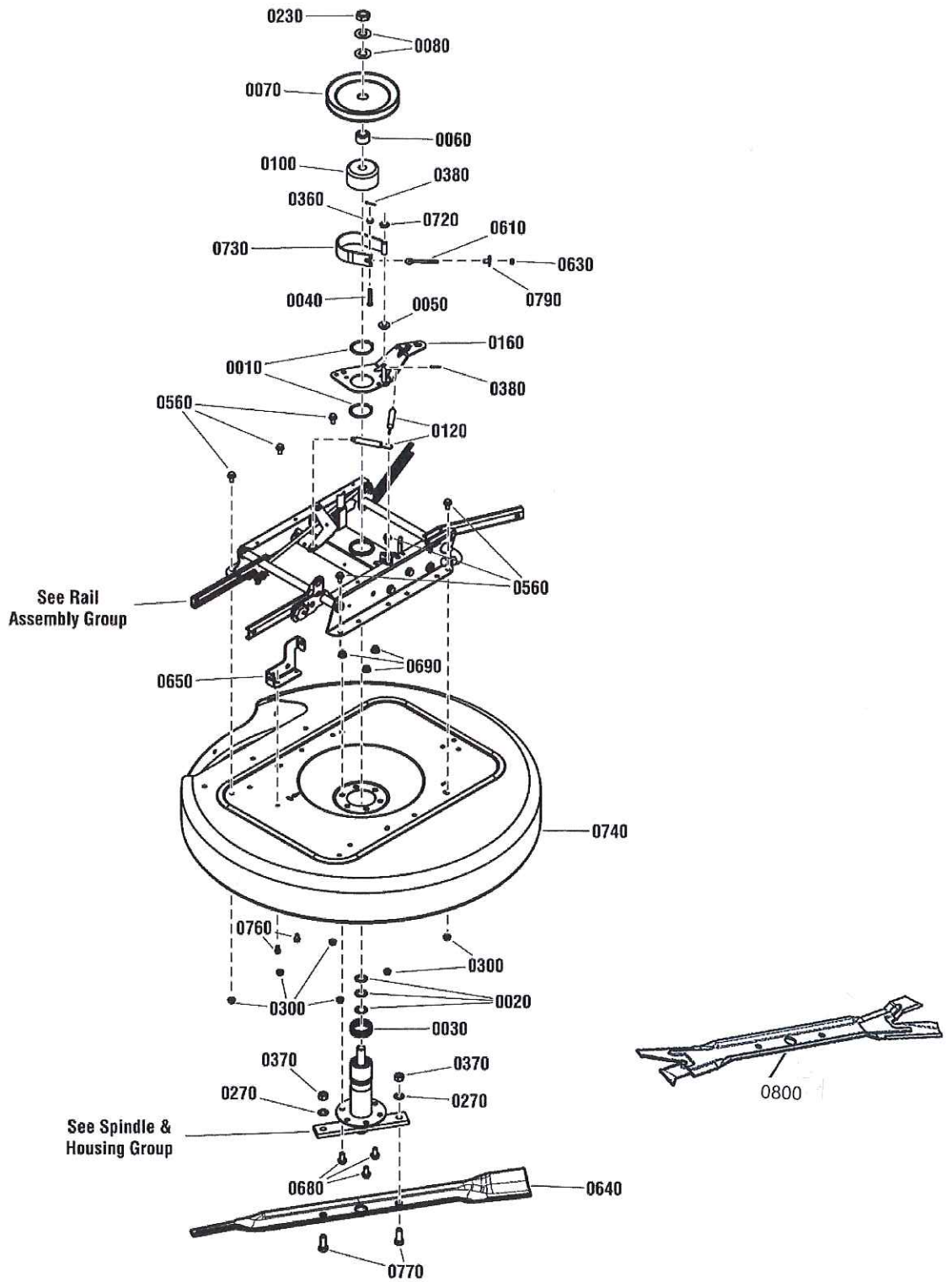
33" Deck Group



Item	Part No	Qty	Description
0020	7105326YP	1	CHUTE, Side Discharge, 28"/33"
0600	7105871YP	1	ASSEMBLY, Mulching Cover, RER, 33"
0600-10	704005	1	NUT, 1/4", Push, Zinc/Clear
0600-20	7103309YP	2	SPRING, Torsion, Rear Door (Not Shown)
0600-30	7105346YP	1	HINGE, Chute, RER, 28/33 (Not Shown)
0600-40	7105689YP	1	ROD, Chute .25 OD, 17.62 Long (Not Shown)
0600-50	7105870YP	1	COVER, Mulching, RER, 33"
0760	7018574SM	1	IDLER, Flat, BB, .375 ID, 4.12 OD
0780	7032111YP	1	RESTRICTOR, Belt, 2.18" w/Lock Tab
0790	703893	1	NUT, 3/8-16 Hex Flange Center Lock, Zinc Plated
0800	7106209YP	1	V-BELT, 33" Deck, Hydro Drive (HA 52.18" EL)
0820	703590	3	WASHER, 3/8 (.406 X .816 X .65), Flat, Zinc/Clear
0830	71046MA	2	NUT, 3/8-16, Nylock, GR5, Zinc/Clear
0840	703115	3	NUT, 5/16-18, Flange Nylock, GR F, Zinc/Clear
0850	703350	4	WASHER, 5/16, Flat SAE, Zinc/Clear
0900	7106057YP	2	ROD, Rear Deck Lift, 5.5 Long, 3/8-16 Threads
0910	7105733YP	1	ROD, Front Deck Hangar, .38 Dia. X 9.16 Long
0920	7301363BMYP	1	PLATE, 33" Deck Hinge Support
0930	703408	3	SCREW, 5/16-18 x 7/8 Hex Head Cap, GR 5, Zinc/Clear
0940	7105982YP	1	CABLE, Brake, 37.4 OPC
0950	704320	1	NUT, 5/16-18 Wing (Nylon Ring) CL/ZC
0960	703185	1	BOLT, 5/16-18 x 3/4, Carriage, Short Neck, G5, Zinc/Clear
0970	703297	1	RETAINER, 5/16 X .625, Push Nut, GR 5, Zinc/Clear
0980	7106072YP	1	COVER, Deck Spindle, 28"/33", RER
0990	703054	4	SCREW, 1/4-20 x 5/8, Hex Washer Head, Thread Roll, Zinc/Clear
1000	703355	1	PIN, 3/8 Cotter Self Locking, Zinc/Clear
1070	7091945YP	1	BOLT, Carriage 3/8-16X1-1/2 GR5 YZ

Footnotes:

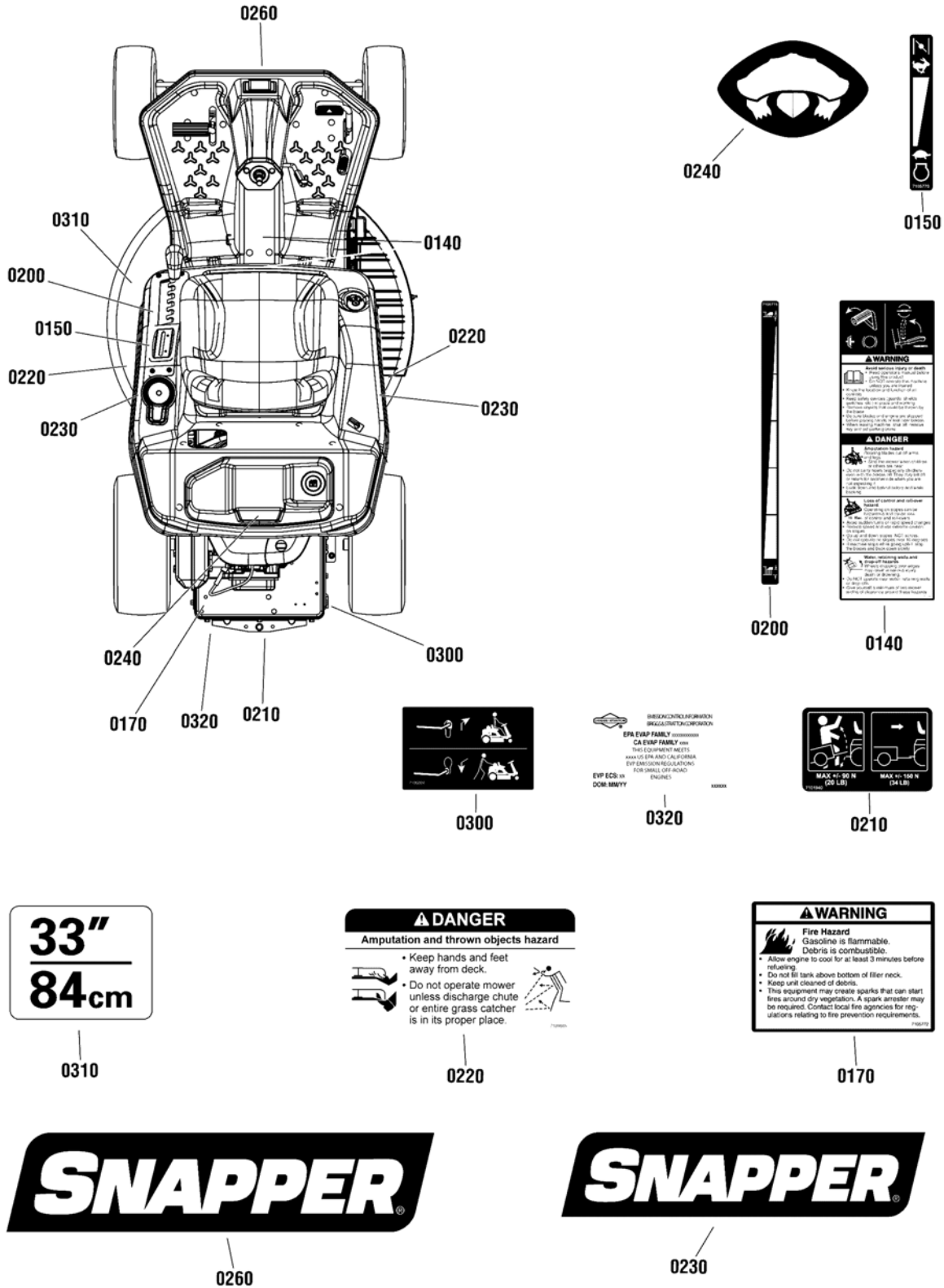
33" Deck Assembly



33" Deck Assembly

Item	Part No	Qty	Description
0010	7010740YP	2	RING, 2 External Retaining
0020	7010935SM	3	WASHER, .77 x 1.13 x .06, Flat
0030	7012670YP	1	RING, 2 ID x 3/4 High, Tolerance
0040	7014304YP	1	PIN, 1/4 x 1-5/8 Clevis
0050	7014314YP	1	SPACER, .31 I.D. x .39 O.D. x 1 Nylon
0060	7015290YP	1	HUB, Pulley, PM
0070	7018781YP	1	PULLEY, Deck Spindle, 6.95 OD
0080	7032027SM	2	WASHER, 49/64x1-1/2x.06, Flat
0100	7035378YP	1	DRUM, Brake Spindle (3" OD, 1.6" Tall)
0120	7036521YP	2	SPRING, Extension, 4 x 1/2 Diameter
0160	706001	1	WELDMENT, Idler Arm, RER
0230	7074467SM	1	NUT, 3/4-16 Hex Jam, GR 8
0270	7090509YP	2	WASHER, 1/2 Internal Tooth Lock, BZ
0300	703409	12	NUT, 5/16-18, Serated Lock Flange, GR5, Zinc/Clear
0360	703332	1	WASHER, 1/4, Flat, GR5 Zinc/Clear
0370	7091939YP	2	NUT, 1/2-20 Hex, GR 5 ZP
0380	331613MA	2	PIN, 3/32 X 3/4, GR5, Cotter, Zinc/Clear
0560	703823	6	BOLT, 5/16-18 x 5/8 Hex Flange lock, GR 5, YZ
0610	7014302YP	1	EYE-BOLT, 1/4-20 x 2-7/8 ZP
0630	703127	1	NUT, 1/4-20, G5 Zinc/Clear
0640	7034168BZYP	1	BLADE, 33" High Lift
0650	7301280BMYP	1	BRACKET, Blade Engagement Cable
0680	703955	3	BOLT, 3/8-16X0.75, Serrated Flange, GR5, Zinc/Clear
0690	703333	3	NUT, 3/8-16, Flanged Lock, GR5, Zinc/Clear
0720	703590	1	WASHER, 3/8 (.406 X .816 X .65), Flat, Zinc/Clear
0730	7503086YP	1	ASSEMBLY, Brake Band, RER, 10.12 X 1.25"
0740	7061972YP	1	KIT, 33" Deck Replacement (Includes Decals)
0760	B4300GS	2	SCREW, 1/4-20 X .500, Hex HD, Self-Tap, Zinc/Clear
0770	7090491YP	2	SCREW, 1/2-20 x 1-1/4 Hex Head Cap, GR5
0790	7106120YP	1	T-NUT, 1/4-20 (Bent End)
0800	7024741AYP	1	BLADE, 33" Recycling Ninja

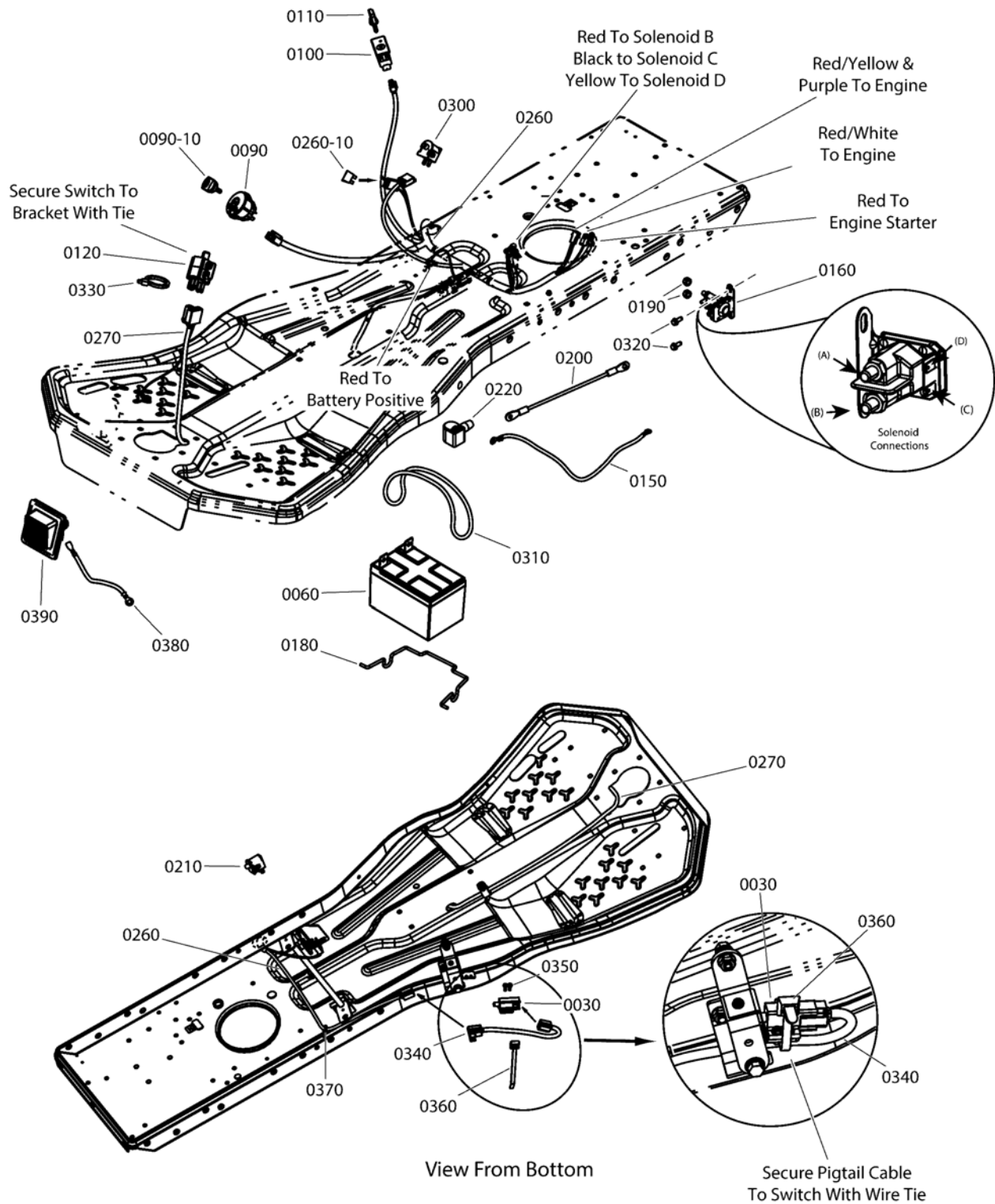
Footnotes:



Item	Part No	Qty	Description
0140	7105769YP	1	DECAL, Warning/Danger
0150	7105770YP	1	DECAL, Engine Speed, RER
0170	7105772YP	1	DECAL, Fuel Warning
0200	7105775YP	1	DECAL, HOC
0210	7101940YP	1	DECAL, Weight Limitation
0220	7101665YP	2	DECAL, Danger Do Not Operate W/O Deflector
0230	1755403YP	2	DECAL, Snapper Logo, 1.8" x 7.23"
0240	1752570YP	1	DECAL, Snapper Turtle
0260	1739983YP	1	DECAL, Snapper, 2.13" x 8.5"
0300	7105924YP	1	DECAL, Hydro RER Roll Release
0310	1755713YP	1	DECAL, Mower Width 33" / 84CM
0320	319785YP	1	DECAL, CARB/EPA, B&S Certified 2013

Not for
Reproduction

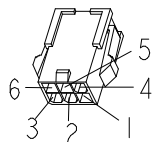
Footnotes:



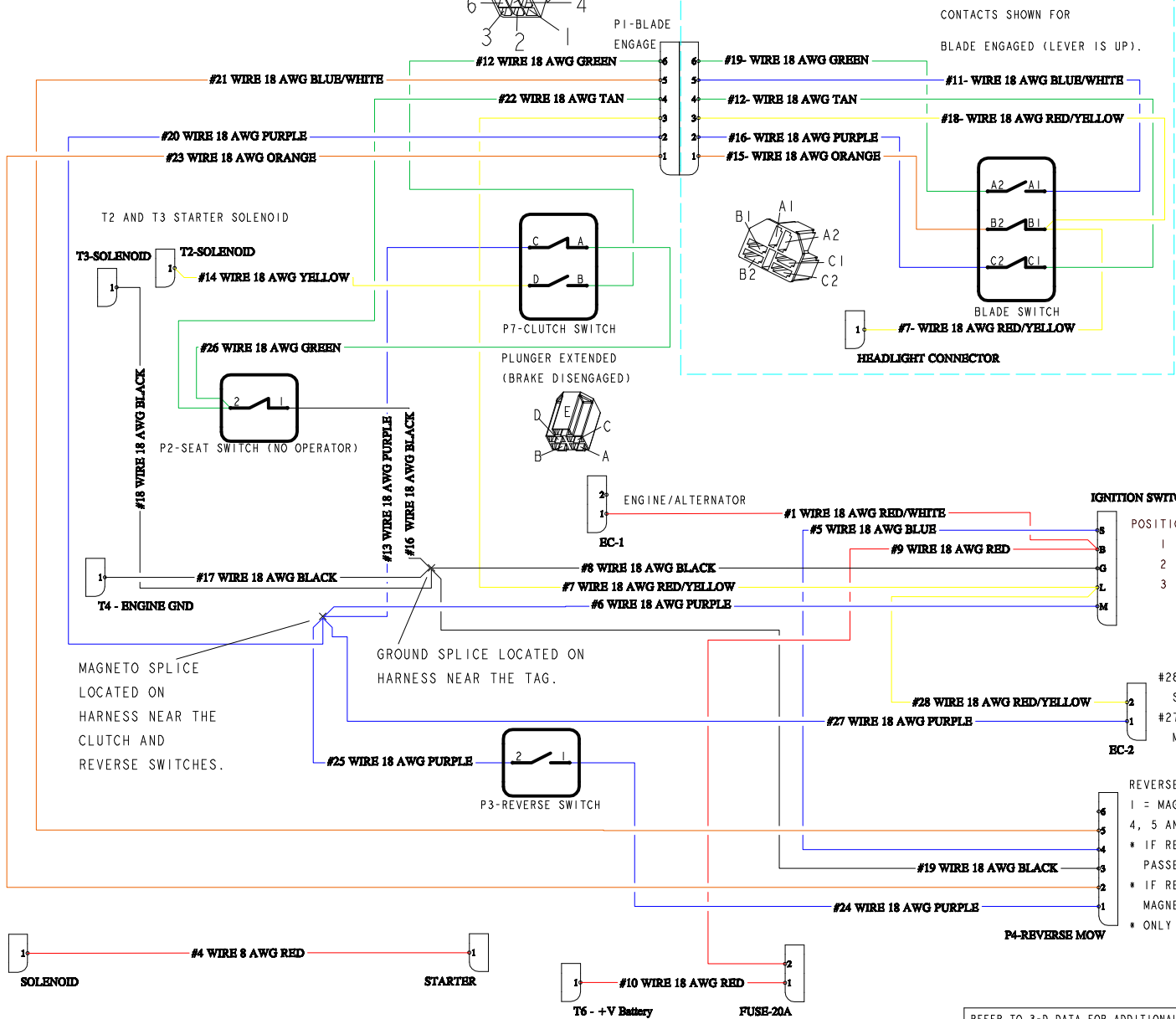
Item	Part No	Qty	Description
0030	7023355YP	1	SWITCH, DPDT NO/NC
0060	7600188YP	1	BATTERY, 12V 20HR: 190CCA, Sealed (3.9" W, 5.9" L, 4 to 4.7" H)(Includes Cable Attachment Hdwe.)
0060-10	7900056YP	2	BOLT, #10-24 X 3/4, Carriage, GR2, YZ (Not Shown)
0060-20	703917	2	NUT, #10-24, Hex Flanged Whiz Lock, ZC (Not Shown)
0090	7106169YP	1	SWITCH, Ignition, 3 Position (Delta)(Without Key)
0090-10	7106172YP	1	KEY, Ignition Switch - Delta, Blister Pack of 2, CE/CAN
0100	1726556SM	1	SWITCH, Reverse Mow Option Module (Without Key)
0110	1726557SM	1	KEY, RMO Module (Yellow)
0120	1751449YP	1	SWITCH, Plunger, Snap In (NO/NC/NC)
0150	7100636SM	1	CABLE, Battery, 8 Gauge, Black, 20, 1/4 & 5/16 Terminals
0160	1755381YP	1	SOLENOID, 12V, L-Bracket, 2-Spade
0180	7105788YP	1	BRACE, Battery
0190	2860750SM	2	NUT, 5/16-24 Hex Lock, Keps, YZ
0200	1716549SM	1	CABLE, Battery Positive, Red (#6 x 10" Long, 1/4" & 5/16" Ring Terminals)
0210	1732004SM	1	SWITCH, Push Button, (NO, Black)
0220	7105082YP	1	BOOT, Insulator
0260	706331	1	WIRE HARNESS, Main, 14, 15.5HP/17.5HP
0260-10	7023653YP	1	FUSE, 20 Amp
0270	7105697YP	1	HARNESS, Blade Engage, 41"
0300	7023354YP	1	SWITCH, Seat, Push Button (NC - Gray)
0310	1665872SM	1	STRAP, Rubber Battery, .19 SQ, 7.88 OD, Black
0320	703054	2	SCREW, 1/4-20 x 5/8, Hex Washer Head, Thread Roll, Zinc/Clear
0330	703586	1	TIE, 7, Self Locking
0340	706332	1	WIRE HARNESS, Clutch Switch Pig Tail
0350	704060	2	SCREW, 10-24 x 1/2" Hex Washer Self-Tap, Torx, ZC/CL
0360	7024641YP	1	WIRE TIE, 5.5" L
0370	1730268SM	1	CLIP, Hose, .50" Dia. Push In, Black Plastic
0380	7106051YP	1	WIRE, RER Head Light Ground
0390	7105923YP	1	ASSEMBLY, Head Light (includes Lamp, 12V, 25-30 Lumen LED, 1156 Socket, Type T25-BA15S)
0390-10	1736180YP	1	SOCKET, Single / Twin Light (Includes Gasket)(Not Shown)
0390-20	1755317YP	1	* LAMP, 12VAC 25-30 Lumen LED (1156 Socket)(Not Shown)

Footnotes:

Note* See your local hardware store for replacement bulbs.

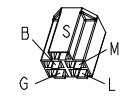


HARNES (7105697)

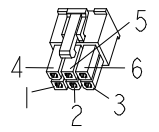


- OPERATION NOTES:
- POSITION 1 OF IGNITION SWITCH (ENGINE SHUT-OFF):
GROUND (#8 WIRE) TO THE MAGNETO WIRE (#6 WIRE)
 - POSITION 2 OF IGNITION SWITCH (ACCESSORY/RUN):
A. POWER TO THE FUEL SHUT-OFF SOLENOID (#28 WIRE).
B. IF THE BLADE IS ENGAGED (#7 WIRE), THEN POWER IS APPLIED TO THE REVERSE MOW SWITCH FEATURE (#23 WIRE AND SEE THAT FEATURE FOR FURTHER INFO).
 - POSITION 3 OF IGNITION SWITCH (CRANK):
A. POWER TO THE REVERSE MOW SWITCH (#5 WIRE).
B. IF RMO KEY IS INSTALLED, IT WILL THEN SEND POWER TO THE BLADE ENGAGEMENT SWITCH (#21 WIRE).
C. IF THE BLADE IS DISENGAGED AND THE VEHICLE HAS THE PARK BRAKE ENGAGED, THE VEHICLE WILL START (#12 AND #14 WIRES).
 - DRIVING AND OPERATOR LEAVES THE SEAT:
FROM THE SPLICE FOR THE MAGNETO, WIRE #13 GOES TO THE PARK BRAKE SWITCH, IF DISENGAGED THEN GOES TO THE SEAT SWITCH (#26 WIRE). THE SEAT SWITCH WILL GROUND THE MAGNETO (#16 WIRE).
 - BLADE ENGAGED AND OPERATOR LEAVES THE SEAT:
FROM THE SPLICE FOR THE MAGNETO, WIRE #20 GOES TO THE BLADE ENGAGEMENT SWITCH, IF ON THEN WIRE #22 HAS THE MAGNETO SIGNAL WHICH THEN GOES TO THE SEAT SWITCH. SEAT SWITCH WILL GROUND THE MAGNETO (#16 WIRE).

POSITION	DESCRIPTION	FUNCTION
1	OFF	G + M
2	RUN	L + B
3	START/CRANK	L + B + S



- REVERSE MOW FEATURE
- 1 = MAGNETO; 2 = CLUTCH; 3 = GND;
 - 4, 5 AND 6 = KEY PRESENCE FEATURE
 - * IF REVERSE KEY INSTALLED, START SIGNAL PASSES THROUGH TO REST OF CIRCUIT (PINS 4 AND 5).
 - * IF REVERSE MOW FEATURE NOT ENGAGED, MAGNETO IS GROUNDED INTERNALLY (PINS 1 AND 3).
 - * ONLY HAS POWER WHEN BLADE IS ENGAGED (PIN 2).



ANY CHANGES TO THE SCHEMATIC MAY REQUIRE UPDATES TO THE HARNES AND VICE VERSA.

REV.	CHANGES:	BY	DOC. NO.	DATE
-	RELEASE WIRING SCHEMATIC	E EW	ECN035078	06/03/14

REFER TO 3-D DATA FOR ADDITIONAL INFORMATION	BRIGGS & STRATTON CORP.	
<small>THIS DRAWING IS PROPRIETARY PROPERTY OF BRIGGS & STRATTON CORPORATION. DISCLOSED IN CONFIDENCE, WHICH MAY NOT BE USED OR DISCLOSED WITHOUT PERMISSION. RETURN PROMPTLY AFTER USE.</small>	DIMENSIONING AND TOLERANCING PER ASME Y14.5-2009	SIZE C
SCALE:	UNCONTROLLED DOCUMENT WHEN PRINTED	
<small>UNLESS OTHERWISE SPECIFIED, ALL DIMENSIONS ARE IN INCHES.</small>	TITLE: MY14 SCHEMATIC, RER, 15.5/17.5 HP	
CLASSIFICATION OF CHARACTERISTICS	MATERIAL: HARNES PART NUMBER = 7106129 AND 7106211	
DOUBLE MAJOR(MM_00) CRITICAL(C_00) MAJOR(M_00)	DRAWN: EW 06/03/14 APPR: - -	SIMILAR TO: - 1758713
	DO NOT SCALE DRAWING	REV SHEET 1 OF 1

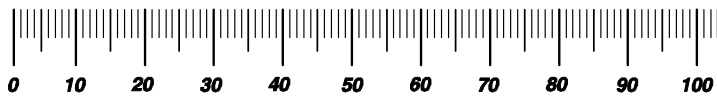
Not for
Reproduction

Hardware Identification & Torque Specifications

Torque Specification Chart								
FOR STANDARD METRIC MACHINE HARDWARE (Tolerance ± 20%)								
Property Class	5.6		8.8		10.9		12.9	
	Class 5.6		Class 8.8		Class 10.9		Class 12.9	
Size Of Hardware	in/lbs		in/lbs		in/lbs		in/lbs	
	ft/lbs	Nm.	ft/lbs	Nm.	ft/lbs	Nm.	ft/lbs	Nm.
M3	5.88	.56	13.44	1.28	19.2	1.80	22.92	2.15
M4	13.44	1.28	30.72	2.90	43.44	4.10	52.56	4.95
M5	26.4	2.50	60.96	5.75	5.97	8.10	7.15	9.7
M6	44.64	4.3	7.3	9.9	10.3	14	12.1	16.5
M7	5.2	7.1	12.1	16.5	16.9	23	19.9	27
M8	7.7	10.5	17.7	24	25	34	29	40
M10	15	21	35	48	50	67	59	81
M12	26	36	61	83	86.2	117	103	140
M14	42	58	101	132	136	185	162	220
M16	64	88	147	200	210	285	250	340
M18	89	121	202	275	287	390	346	470
M20	126	171	290	390	405	550	486	660
M22	169	230	390	530	559	745	656	890
M24	217	295	497	375	708	960	840	1140
M27	320	435	733	995	1032	1400	1239	1680
M30	435	590	995	1350	1401	1900	1681	2280
M33	590	800	1349	1830	1902	2580	2278	3090
M36	759	1030	1740	2360	2441	3310	2935	3980
M39	988	1340	2249	3050	3163	4290	3798	5150

Torque Specification Chart						
FOR STANDARD MACHINE HARDWARE (Tolerance ± 20%)						
Hardware Grade	No Marks		SAE Grade 5		SAE Grade 8	
	SAE Grade 2		SAE Grade 5		SAE Grade 8	
Size Of Hardware	in/lbs		in/lbs		in/lbs	
	ft/lbs	Nm.	ft/lbs	Nm.	ft/lbs	Nm.
8-32	19	2.1	30	3.4	41	4.6
8-36	20	2.3	31	3.5	43	4.9
10-24	27	3.1	43	4.9	60	6.8
10-32	31	3.5	49	5.5	68	7.7
1/4-20	66	7.6	8	10.9	12	16.3
1/4-28	76	8.6	10	13.6	14	19.0
5/16-18	11	15.0	17	23.1	25	34.0
5/16-24	12	16.3	19	25.8	29	34.0
3/8-16	20	27.2	30	40.8	45	61.2
3/8-24	23	31.3	35	47.6	50	68.0
7/16-14	30	40.8	50	68.0	70	95.2
7/16-20	35	47.6	55	74.8	80	108.8
1/2-13	50	68.0	75	102.0	110	149.6
1/2-20	55	74.8	90	122.4	120	163.2
9/16-12	65	88.4	110	149.6	150	204.0
9/16-18	75	102.0	120	163.2	170	231.2
5/8-11	90	122.4	150	204.0	220	299.2
5/8-18	100	136	180	244.8	240	326.4
3/4-10	160	217.6	260	353.6	386	525.0
3/4-16	180	244.8	300	408.0	420	571.2
7/8-9	140	190.4	400	544.0	600	816.0
7/8-14	155	210.8	440	598.4	660	897.6
1-8	220	299.2	580	788.8	900	1,244.0
1-12	240	326.4	640	870.4	1,000	1,360.0

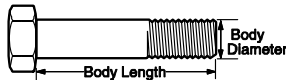
The guides and ruler furnished below are designed to help you select the appropriate hardware.



Nut, M8

Thread Diameter (mm)
Inside Diameter (in) Threads per inch

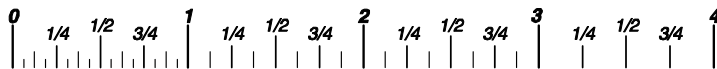
Nut, 1/2-16



Screw, M8- 1.25 x 25

Thread Diameter (mm) Distance between threads (mm) Body Length (mm)
Body Diameter Threads per inch Body Length (in)

Screw, 1/2- 16 x 2



Standard Hardware Sizing

When a washer or nut is identified as 1/2" (M8), this is the *Nominal size*, meaning the *inside diameter* is 1/2 inch (8mm metric thread diameter); if a second number is present it represents the *threads per inch* (distance between threads).

When bolt or capscrew is identified as 1/2 - 16 x 2" (M8 - 1.25 x 50), this means the *Nominal size*, or body diameter is 1/2 inch (8mm metric thread diameter), the second number, 16, represents the *threads per inch*, (1.25 thread diameter). The final number is the body length of the bolt or screw, 2 inches (50mm).

NOTES

- These torque values are to be used for all hardware excluding: locknuts, self-tapping screws, thread forming screws, sheet metal screws and socket head setscrews.
- Recommended seating torque values for locknuts:
 - for prevailing torque locknuts - use 65% of grade 5 torques.
 - for flange whizlock nuts and screws - use 135% of grade 5 torques.
- Unless otherwise noted on assembly drawings, all torque values must meet this specification.

Common Hardware Types

Hex Head Capscrew



Washer

Lockwasher

Carriage Bolt



Hex Nut

Wrench & Fastener Size Guide

1/4" Bolt or Nut Wrench—7/16"	5/16" Bolt or Nut Wrench—1/2"	3/8" Bolt or Nut Wrench—9/16"	7/16" Bolt or Nut Wrench (Bolt)—5/8" Wrench (Nut)—11/16"	1/2" Bolt or Nut Wrench—3/4"
M6 Bolt or Nut Wrench—10mm	M8 Bolt or Nut Wrench—13mm	M10 Bolt or Nut Wrench—17mm	M12 Bolt or Nut Wrench—19mm	M14 Bolt or Nut Wrench—22mm

Parts Manual for

SNAPPER®

REAR ENGINE RIDER HYDRO DRIVE 33" 15.5 TP RE SERIES

Not for
Reproduction

IT IS THE POLICY OF BRIGGS & STRATTON CORP TO IMPROVE ITS PRODUCTS WHENEVER IT IS POSSIBLE AND PRACTICAL TO DO SO. WE RESERVE THE RIGHT TO MAKE CHANGES OR ADD IMPROVEMENTS AT ANY TIME WITHOUT INCURRING ANY OBLIGATION TO MAKE SUCH CHANGES ON PRODUCTS

Briggs & Stratton Yard Power Products Group

535 Macon Road
McDonough, GA, 30253 U.S.A.
800-935-2967

www.snapper.com

Copyright © 2014 Briggs & Stratton Corporation
Milwaukee, WI USA. All Rights Reserved

Manual No. 7106316
Revision: - 8/21/2014