

Parts Manual for
SNAPPER®

**21" STEEL DECK
WALK BEHIND MOWER
SERIES 20**

<i>Model No.</i>	<i>Description</i>
7800947-00	P2187520



Briggs & Stratton Yard Power Products Group
535 Macon Road
McDonough, GA, 30253 U.S.A.
800-935-2967

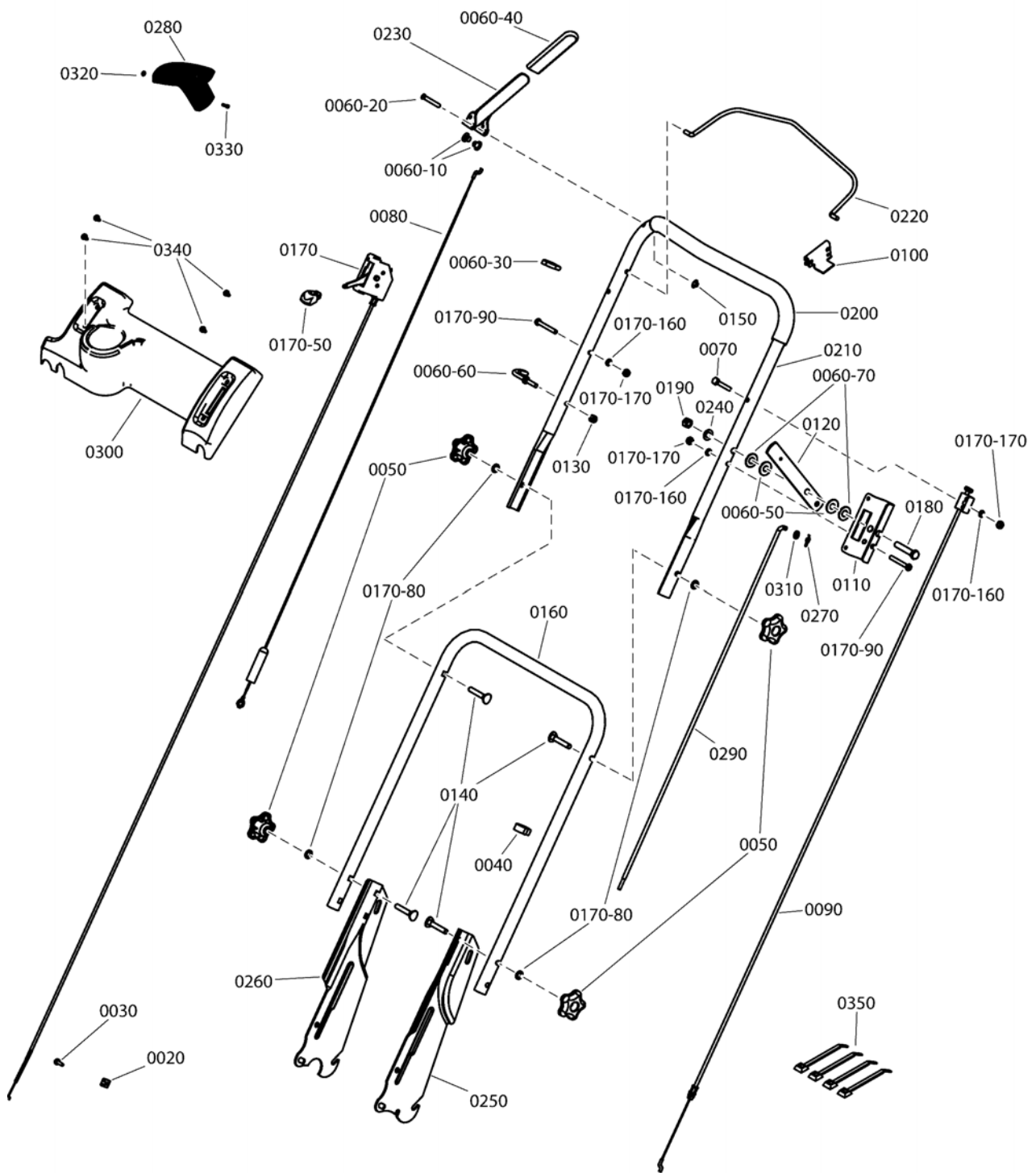
Manual No.	7106265
Revision: -	4/7/2014

Not for
Reproduction

PAGE	GROUP
4	Handle Group, P21
8	Engine Group
10	Wheel & Height-of-Cut Group
12	Drive System
16	Transmission Assembly
18	Bag & Chute Group
20	Decals

Not for
Reproduction

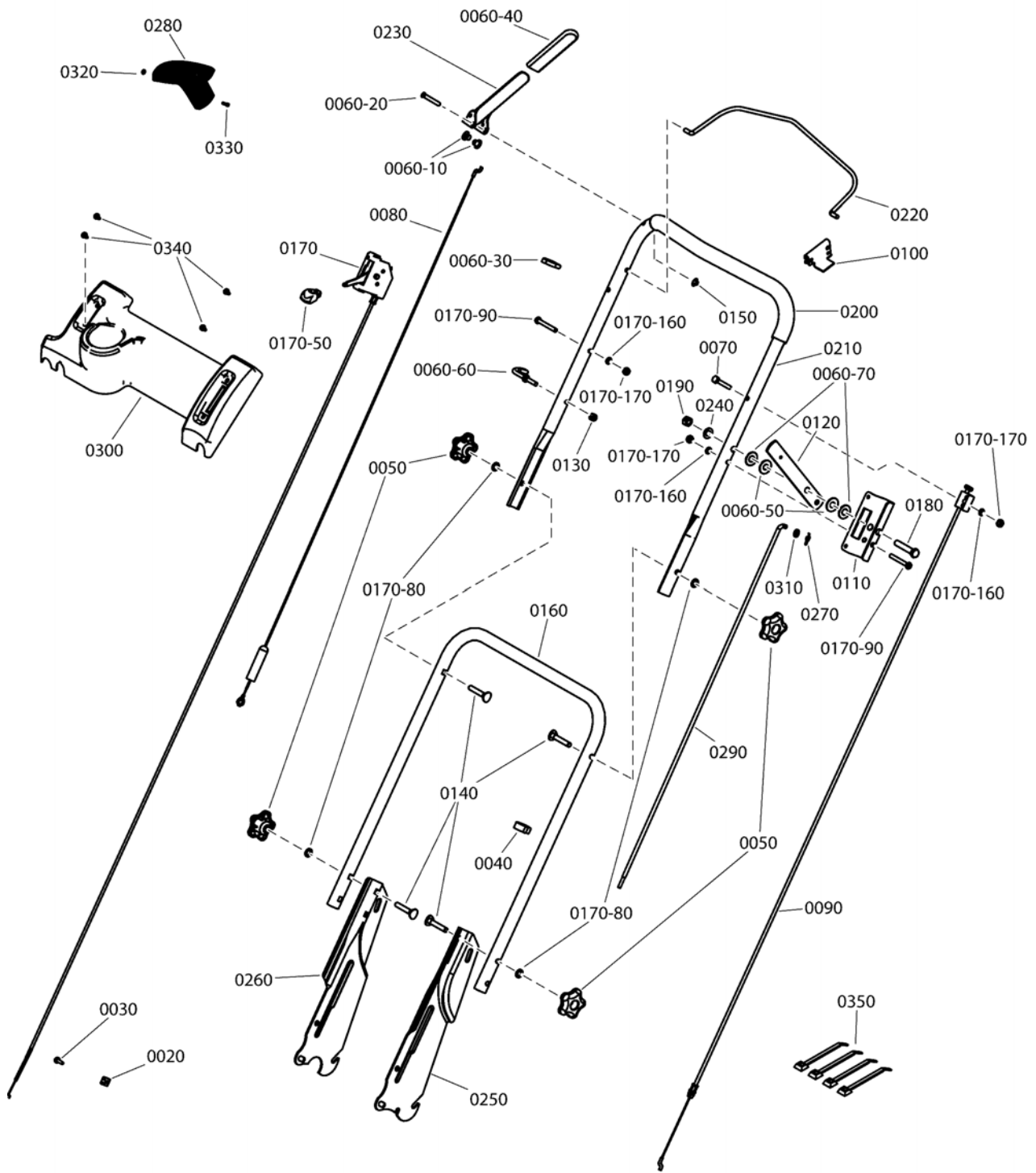
Handle Group, P21



Item	Part No	Qty	Description
0020	690798	1	CLAMP, Casing
0030	704324	1	SCREW, #10-32 X .615, Hex Head Cap Slotted, Zinc/Clear
0040	7023813SM	1	CLIP, Wiring Harness
0050	7105085YP	4	KNOB, 5/16-18, Handle, Fluted 5 Prong, Black
0060-10	7014343YP	2	BUSHING, Flanged, .27 ID, Nylon, Black
0060-20	704031	1	PIN, 1/4 X 1.5", Clevis, ZC/CL
0060-30	7026219YP	1	CLAMP, 7/8" Double Cable
0060-40	7028407YP	1	GRIP, International Symbol, 4.6" Black
0060-50	704004	2	WASHER, .406 ID X 1.0 OD X .063 Thk, Flat Nylon
0060-60	7028488MA	1	GUIDE, 1/4-20, Rope, CL/ZC
0060-70	703964	2	WASHER, 7/16" ID, 1" OD, .060 Thk, Flat, ZC/CL
0070	703234	2	SCREW, 1/4-20 X 1.5, Hex Head Cap, GR5, ZC/CL
0080	7034604YP	1	CABLE, Clutch Control, 41.25" L
0090	7102593YP	1	CABLE, Zone Control, W14, 52.661" L
0100	7034872YP	1	CLIP, Zone Control
0110	7074003YP	1	BRACKET, Shift, Black Zinc
0120	7074113BMYP	1	LEVER, Shift
0130	15X145MA	1	NUT, 1/4-20, Nylock, GR A, Zinc/Clear
0140	703059	4	BOLT, 5/16-18 X 2.00 Conical Head, SN ZC/CL
0150	704005	1	NUT, 1/4, Push, Zinc/Clear
0160	7074156AYP	1	HANDLE, Middle
0170	7102594YP	1	CONTROL, Throttle, W14, 63.12" L
0170-50	7075308	1	KNOB, THROTTLE
0170-80	7090391SM	4	WASHER, 5/16, Internal Lock, Zinc/Clear
0170-90	703163	1	SCREW, 1/4-20 X 2.0, Hex Head Cap, GR5, Zinc/Clear
0170-160	703462	3	WASHER, 1/4 Internal Tooth Lock, YZ
0170-170	703127	3	NUT, 1/4-20, G5 Zinc/Clear
0180	703589	1	SCREW, 3/8-16 x 2, Hex Head Cap, GR5, Zinc/Clear
0190	703347	1	NUT, 3/8-16, Hex Center-Lock, GR B, Zinc/Clear
0200	7023810YP	1	FOAM GRIP, 18.75"
0210	7074411AYP	1	HANDLE, Upper
0220	7074418AYP	1	BAIL, OPC Control (16.6" Wide)
0230	7074473AYP	1	HANDLE, Clutch
0240	704006	1	WASHER, 3/8" ID x 3/4" OD, Belleville, Zinc/Clear
0250	7033985AYP	1	HANDLE, Lower, ADJ, LH
0260	7033986AYP	1	HANDLE, Lower, ADJ, RH
0270	704030	1	PIN, 5/16 X 1.044, Self-Locking Cotter, Zinc/Clear
0280	7075182YP	1	KNOB, Shift, Red
0290	7074133YP	1	ROD, Speed Control (35.5" L, 1/4-28 thread)
0300	7074469YP	1	PANEL, Control
0310	703350	1	WASHER, 5/16, Flat SAE, Zinc/Clear
0320	703460	1	NUT, #8-32, Hex, Zinc/Clear
0330	703351	1	SCREW, #8-32 X 0.50, Machine Fillister Head, Zinc/Clear
0340	703961	4	SCREW, 1/4-20 X .550, T-30 Pan Head Torx, Self-Tapping, Zinc/Clear

Footnotes:

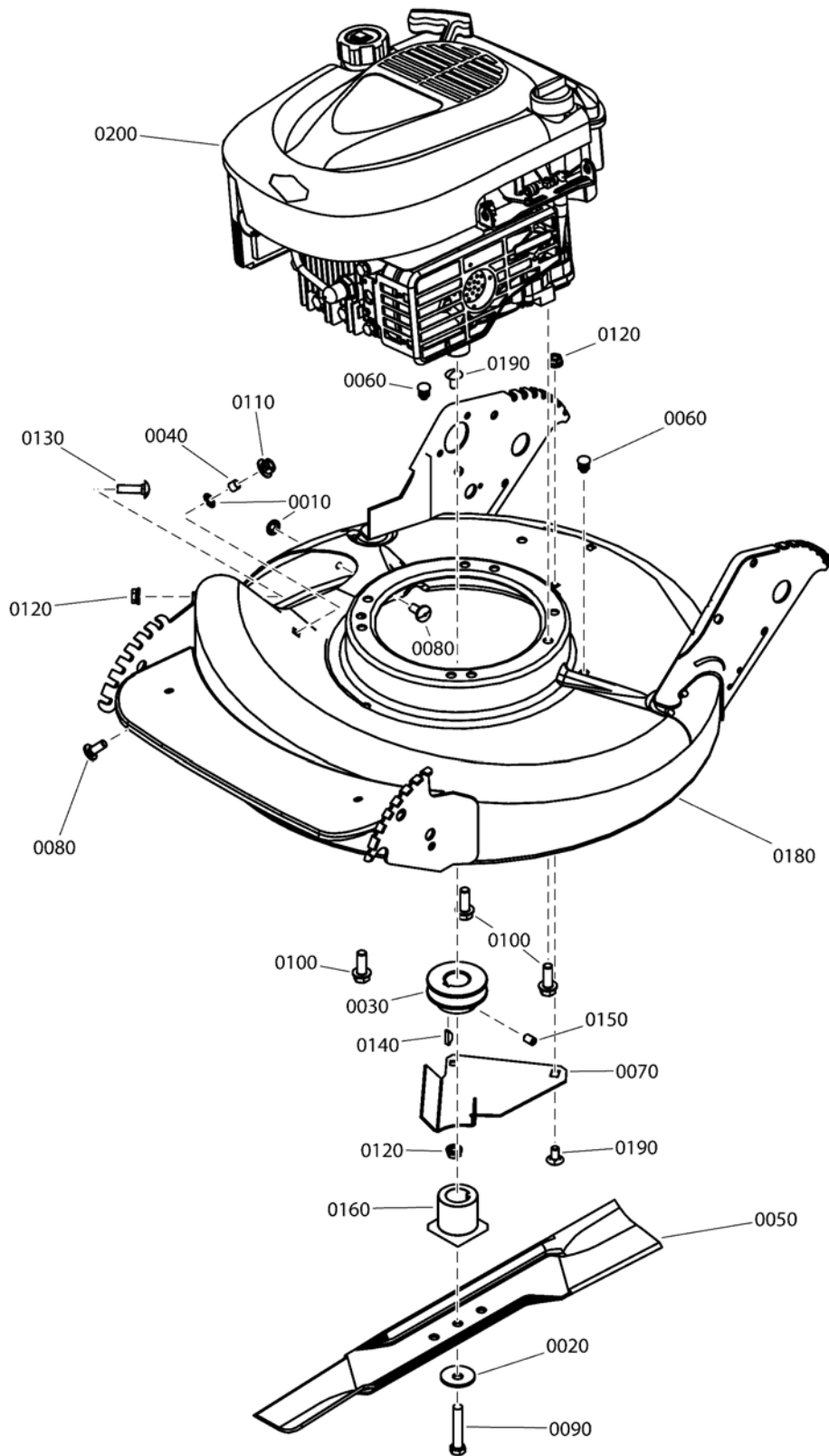
Handle Group, P21



Item	Part No	Qty	Description
0350	7024641YP	4	WIRE TIE, 5.5" L

Not for
Reproduction

Footnotes:



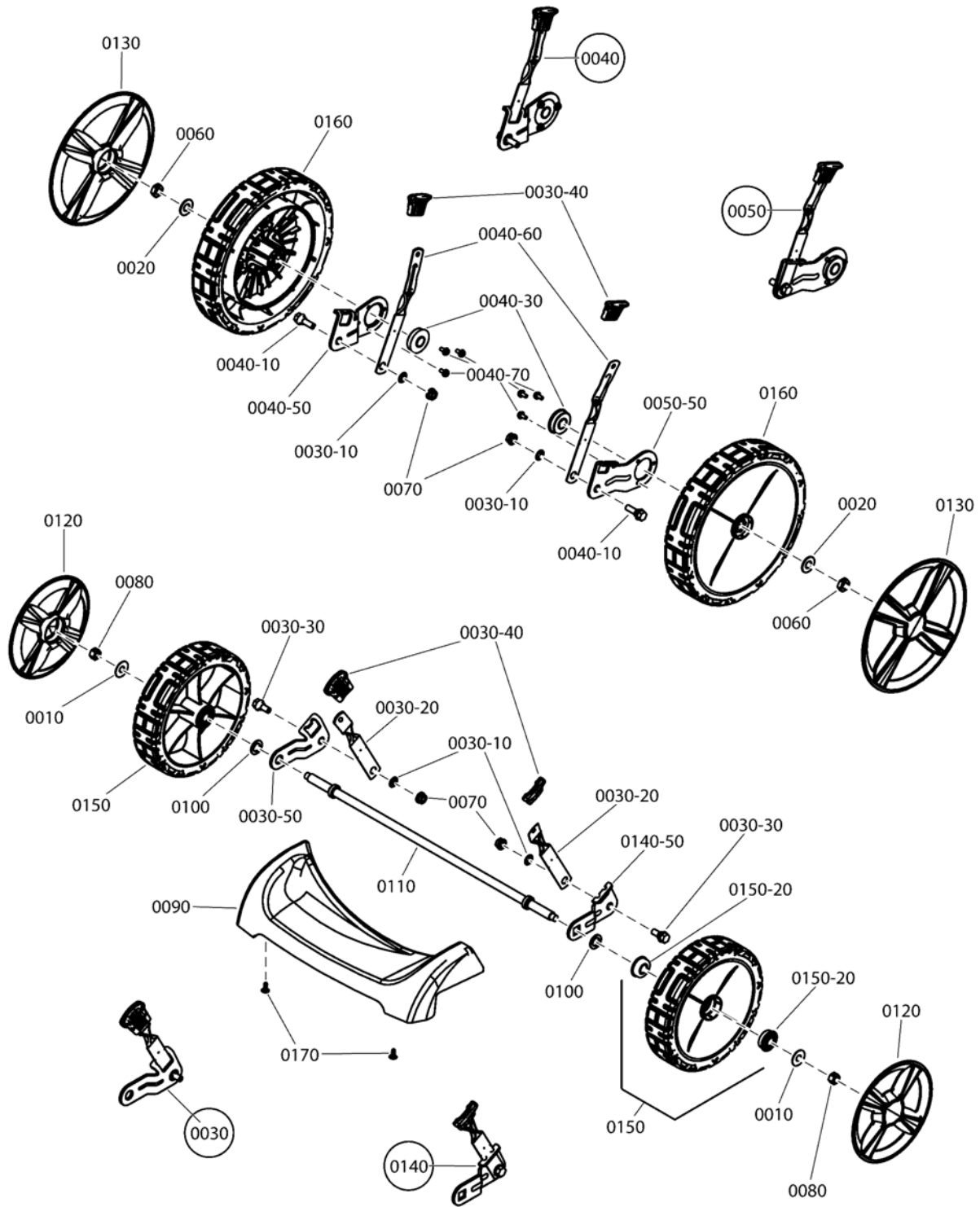
Item	Part No	Qty	Description
0010	703297	2	RETAINER, 5/16 X .625, Push Nut, GR 5, Zinc/Clear
0020	703963	1	WASHER, 13/32x1-13/32" Dia. Cone
0030	7105122YP	1	PULLEY, Engine (25mm I. D. x 2-1/8 O.D.)
0040	7024340SM	1	SPACER, .375 OD X .316 ID X .305 L
0050	7026691YP	1	BLADE, 21" L, .97" Standard Lift
0060	7046780SM	2	PLUG, Hole, .44" OD, Polyethylene
0070	7074568YP	1	COVER, Belt, Zinc/Clear
0080	703185	2	BOLT, 5/16-18 x 3/4, Carriage, Short Neck, G5, Zinc/Clear
0090	703999	1	SCREW, 3/8-24 X 2, Hex Head Cap, GR5
0100	704000	3	SCREW, 3/8-16 X 1.0, Hex Washer Self-Tap, ZC/CL
0110	704001	1	NUT, 5/16-18 Large Flange Center Lock, ZC/CL
0120	690272MA	3	NUT, 5/16-18, Serated Lock Flange, GR5, Zinc/Clear
0130	704002	1	BOLT, 5/16-18 X 1.125, Carriage, ZC/CL
0140	7091214YP	1	KEY, HI-PRO, .1875X.656, #605
0150	704003	1	SCREW, 5/16-18 X .50, Hex Socket Head, Phosp/Oil
0160	7015626YP	1	HUB, Blade Drive, .25MM ID
0180	7500549DYP	1	KIT, Deck Weldment, 21", HV, SP, ES (red, w/decals)
0190	703447	2	BOLT, 5/16-18 X .625, Carriage, GR5, Zinc/Clear
0200	121S02-0066-F1	1	* ENGINE, B&S 8.75 GT, PRO Mod. #121S02-0066-F1

Not for
Reproduction

Footnotes:

NOTE: * Purchase parts from your B&S engine distributor.

Wheel & Height-of-Cut Group



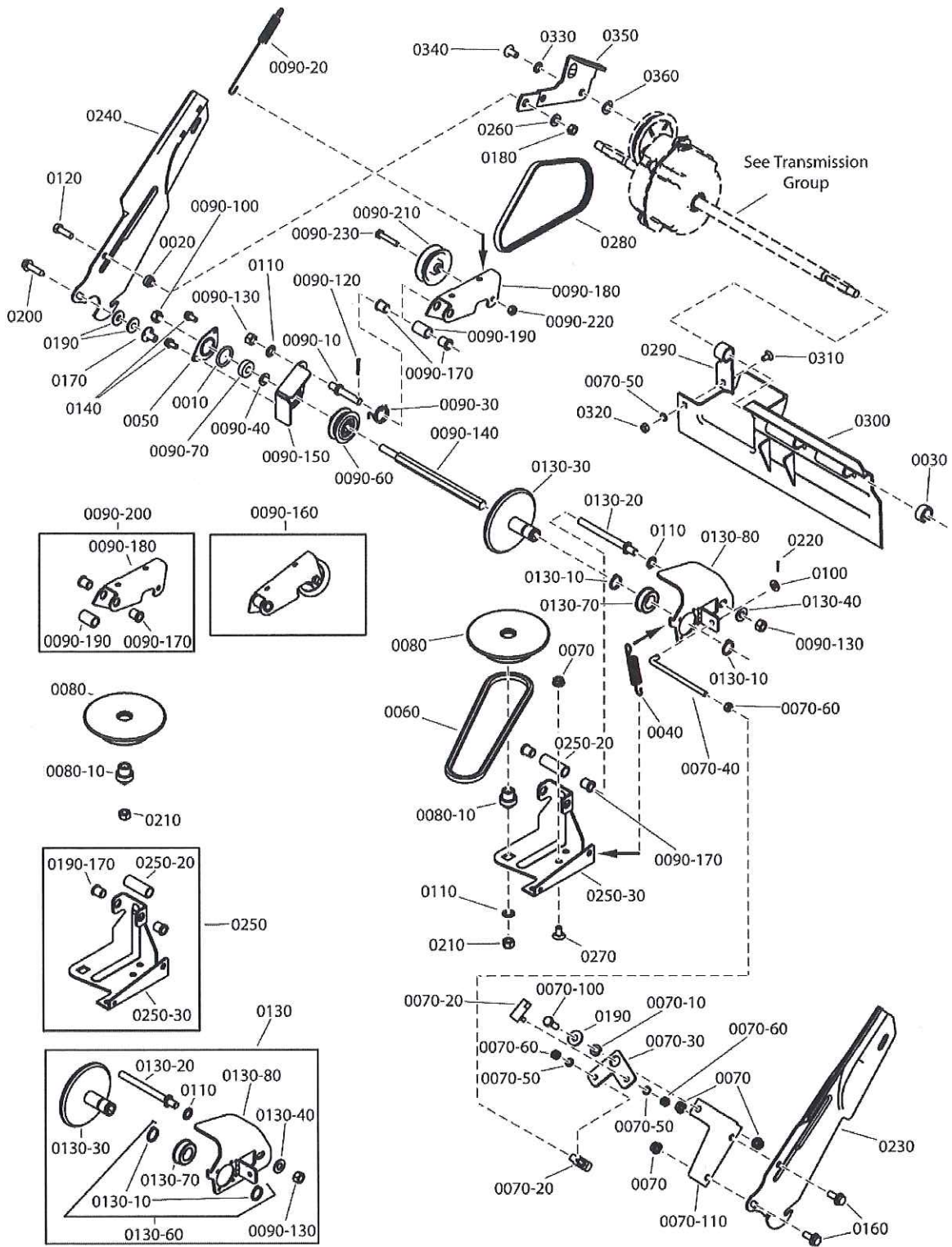
Item	Part No	Qty	Description
0010	703966	2	WASHER, 1 OD x .387 ID, Flat
0020	703964	2	WASHER, 7/16" ID, 1" OD, .060 Thk, Flat, ZC/CL
0030	7600180YP	1	KIT, Front Wheel Arm Assembly, RH
0030-10	703297	4	RETAINER, 5/16 X .625, Push Nut, GR 5, Zinc/Clear
0030-20	7012325YP	2	LATCH, Height
0030-30	703839	2	BOLT, 5/16-18 X .750, Hex Washer Head Shoulder, Zinc/Clear
0030-40	7103793YP	4	GRIP, Height Latch, Black
0030-50	7031017YP	1	WHEEL ARM, Front, Round Hole, RH, Clear
0040	7054246YP	1	ASSEMBLY, Wheel Arm, Long, RR
0040-10	703840	2	BOLT, 5/16-18 X 1.0, Hex Washer Head .435 Dia. Shoulder, ZC/CL
0040-30	7012312YP	2	BEARING, 9/16" ID
0040-50	7032722YP	1	ARM, Wheel, Right Rear, Zinc/Clear
0040-60	7035717YP	2	LATCH, Height Adjusting, (long)
0040-70	703967	6	SCREW, #10-32 x 3/8, Torx Hex Washer Head Self-Tap, ZC/CL
0050	7054247YP	1	ASSEMBLY, Wheel Arm, Left Rear, Long
0050-50	7032723YP	1	ARM, Wheel, Left Rear, Zinc/Clear
0060	703348	2	NUT, 7/16-20, Hex Jam Center Lock, GR B, Zinc/Clear
0070	703409	4	NUT, 5/16-18, Serated Lock Flange, GR5, Zinc/Clear
0080	703347	2	NUT, 3/8-16, Hex Center-Lock, GR B, Zinc/Clear
0090	7100196YP	1	COVER, Front 21 Walk
0100	703835	2	WASHER, Shim, .875 x .531 x .060
0110	7100752YP	1	AXLE, Easy Line (20.44" L, 3/8-16 Threads)
0120	7101350YP	2	HUBCAP, 8" & 9" Spoked Wheel, Cool Gray
0130	7102625YP	2	HUBCAP, 10 Wheel, Spoked - Cool Gray
0140	7600183YP	1	ASSEMBLY, Front Left Wheel Arm (.512 Square Hole)
0140-50	7011393YP	1	WHEEL ARM, L.H. Front (.512 Square Hole) CZ/CL
0150	7500540YP	2	ASSEMBLY, Wheel, 8 x 2 Idle, Snapper Tread, Charcoal Gray
0150-20	7101380YP	4	BALL BEARING, 1-1/8 O.D., Flange
0160	7501078YP	2	ASSEMBLY, Wheel, 10"X2" "DD" Insert Drive, Charcol Gray
0170	703834	2	SCREW, 4.8MM X 1.59MM X 13MM, Torx Round Washer Head, HI-LO, ZC/CL

Footnotes:

Item	Part No	Qty	Description
0010	704008	1	O-RING, 1.0 ID X 1.25 OD X 0.125 Thk
0020	7012114SM	1	BUSHING, Differential
0030	704009	1	RING, Split, .68 x .93 x .44 (Black)
0040	7029025YP	1	SPRING, Extension, .58 x 3.2
0050	7031809YP	1	HOLDER, Bearing (Outer Half), ZC/CL
0060	7046784YP	1	BELT, Engine Drive (Stretch)
0070	690272MA	4	NUT, 5/16-18, Serated Lock Flange, GR5, Zinc/Clear
0070-10	703970	1	SPACER, .623 OD x .328 ID x .151 L
0070-20	7015753YP	2	BALL JOINT, 1/4-28
0070-30	7073913YP	1	BELL CRANK, Black Zinc
0070-40	7074145YP	1	LINK, Transfer (1/4-28 thread)
0070-50	703462	3	WASHER, 1/4 Internal Tooth Lock, YZ
0070-60	703461	3	NUT, 1/4-28 Hex, GR5, Zinc/Clear
0070-100	703408	1	SCREW, 5/16-18 x 7/8 Hex Head Cap, GR 5, Zinc/Clear
0070-110	7073822BMYP	1	BRACKET, Bell Crank
0080	7061275YP	1	Drive Disc, Steel
0080-10	703971	1	BUSHING, 0.385 ID X 0.925 OD X 1.018 Thk, ZC/CL
0090-10	703836	1	STUD, 3/8-24 X 2.38, Single End, ZC/CL
0090-20	7012122YP	1	SPRING, Clutch, Adjustable Tension
0090-30	7012126YP	1	SPRING, Idler Torsion
0090-40	703946	1	WASHER, .390 ID X .720 OD X .054 Thk, Flat, ZC/CL
0090-60	7024521YP	1	PULLEY, Poly-V, 2" OD, .6" Wide, Alum.
0090-60	7019383YP	1	PULLEY, Poly-V, 2" OD, .65" Wide, Steel
0090-70	7028014YP	1	BALL BEARING, Spherical O.D., .38 I.D.
0090-100	703458	1	NUT, 3/8-24 Hex Center Lock, GR B, YZ
0090-120	331613MA	1	PIN, 3/32 X 3/4, GR5, Cotter, Zinc/Clear
0090-130	703895	2	NUT, 3/8-24, Hex, GR 5, Zinc/Clear
0090-140	7072284YP	1	SHAFT, Hex (3/8-24 thread, one end)
0090-150	7031873YP	1	HOLDER, Bearing (Inner Half)
0090-160	7600173YP	1	KIT, Idler Arm, Bushing & Spacer Assembly
0090-170	703973	4	BUSHING, Flanged, .381 x .625 x .62, Metal, CZ/CL
0090-180	7032832YP	1	ARM, Clutch Idler
0090-190	703974	1	SPACER, Idler Arm (.500 ID x .970 Long), ZC/CL
0090-200	7051921YP	1	ASSEMBLY, Clutch Idler
0090-210	7012124YP	1	PULLEY, Flat Idler, .25 ID, 2.25 OD
0090-220	703972	1	NUT, 1/4-28 Hex Top Lock, GR 5, BZ
0090-230	703828	1	SCREW, 1/4-28 x 1-3/8" Hex Head Cap, Grade 5, CZ/CL
0100	71067MA	2	WASHER, 1/4, Flat, GR5 Zinc/Clear
0110	703930	3	WASHER, 3/8" Internal Tooth Lock, Type A, ZC/CL
0120	703301	1	SCREW, 5/16-24 x 1 Hex Head Cap, GR 5, BZ
0130	7600172YP	1	ASSEMBLY, Driven Disc, Cantilever
0130-10	703975	2	RETAINING RING, 3/4" ID, ZC/CL
0130-20	703837	1	STUD, 3/8-24 X 4.5, Plate, ZC/CL
0130-30	7041855YP	1	DRIVEN DISC, Cantilever

Footnotes:

Drive System

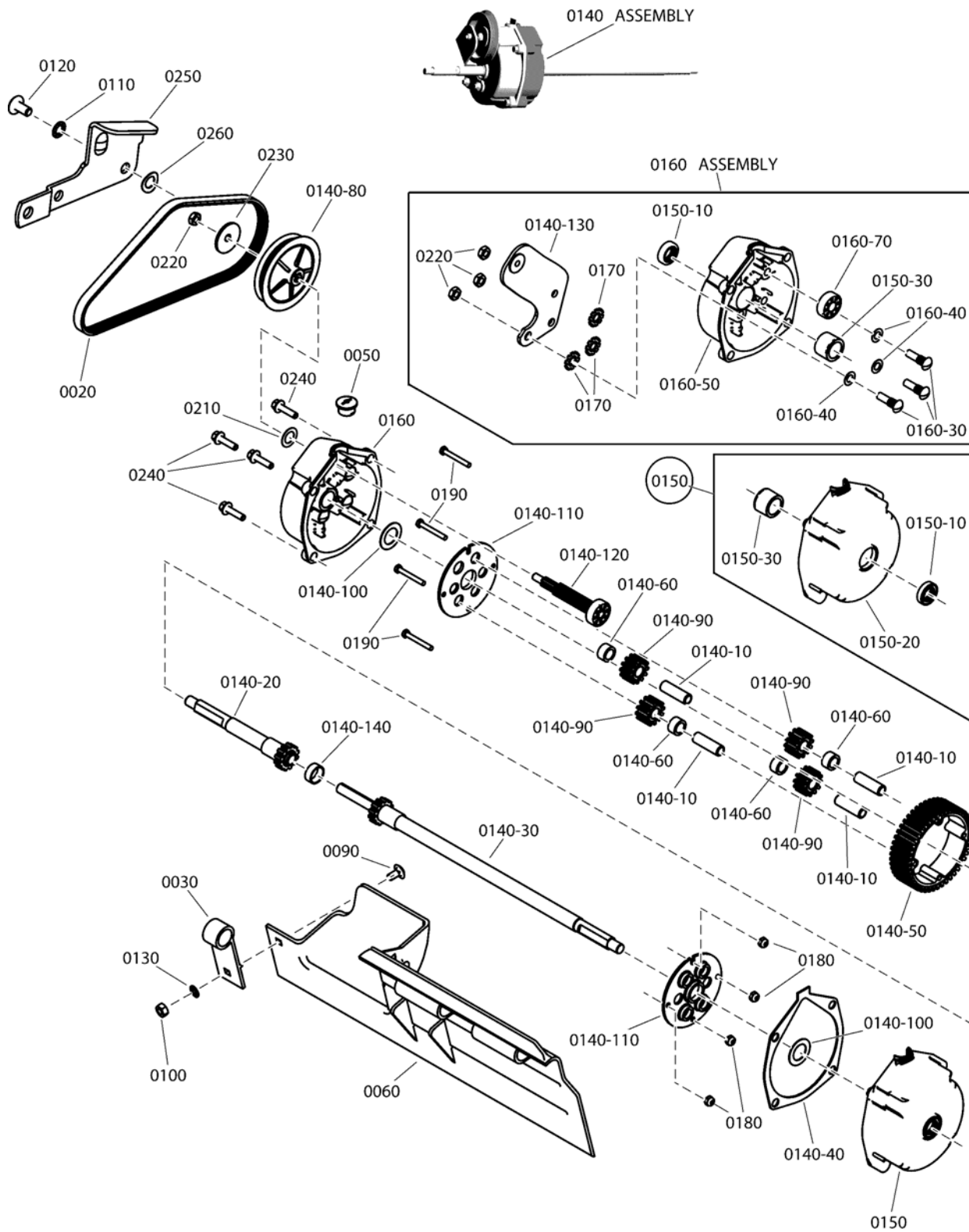


Item	Part No	Qty	Description
0130-40	703590	1	WASHER, 3/8 (.406 X .816 X .65), Flat, Zinc/Clear
0130-60	7501961YP	1	ASSEMBLY, Thrust Plate & Bearing
0130-70	7026693YP	1	BEARING, 3/4" ID
0130-80	7300977BMYP	1	THRUST PLATE, Short, Black
0140	704130	2	SCREW, 1/4-20 X .500, Hex HD, Self-Tap, Zinc/Clear
0160	9357MA	2	SCREW, 5/16-18 X .750, Flanged Whiz-Lock, GR5
0170	703947	1	NUT, 5/16-18 X .625, Weld, ZC/CL
0180	703896	1	NUT, 5/16-24, Hex Center Lock, GR B, Zinc/Clear
0190	703118	3	WASHER, 7/8, Flat, GR5, Zinc/Clear
0200	703167	1	SCREW, 5/16-18 x 1-1/4 Hex Washer Head Self-Tap
0210	703457	1	NUT, 3/8-16, Hex, GR 5, Zinc/Clear
0220	703464	1	PIN, 1/16 X 0.50 Cotter, GR 5 Zinc/Clear
0230	7033985AYP	1	HANDLE, Lower, ADJ, LH
0240	7033986AYP	1	HANDLE, Lower, ADJ, RH
0250	7052987BM	1	ASSEMBLY, Deck Bracket, P21S
0250-20	703941	1	SPACER, .50 ID X .650 OD X 1.750, Thk, ZC/CL
0250-30	7033774YP	1	BRACKET, Deck, P21S
0260	703350		WASHER, 5/16, Flat SAE, Zinc/Clear
0270	703447	1	BOLT, 5/16-18 X .625, Carriage, GR5, Zinc/Clear
0280	7012354YP	1	BELT, Poly-V, V21
0290	7012616YP	1	SUPPORT, Foot Guard
0300	7029008YP	1	GUARD, Rear Foot, 21"
0310	703978	1	BOLT, 1/4-20 X 1/2, Carriage, GR5 YZ
0320	703127	1	NUT, 1/4-20, G5 Zinc/Clear
0330	703587	1	WASHER, 5/16, Internal Lock, Zinc/Clear
0340	1753983YP	1	SCREW, 5/16-18 x 5/8 Truss Head Torx
0350	7034179BMYP	1	LINK, Differential, Commercial
0360	703940	1	WASHER, 0.445 ID X 0.780 OD X 0.025 Thk, Wave, ZC/CL

Not for
Reproduction

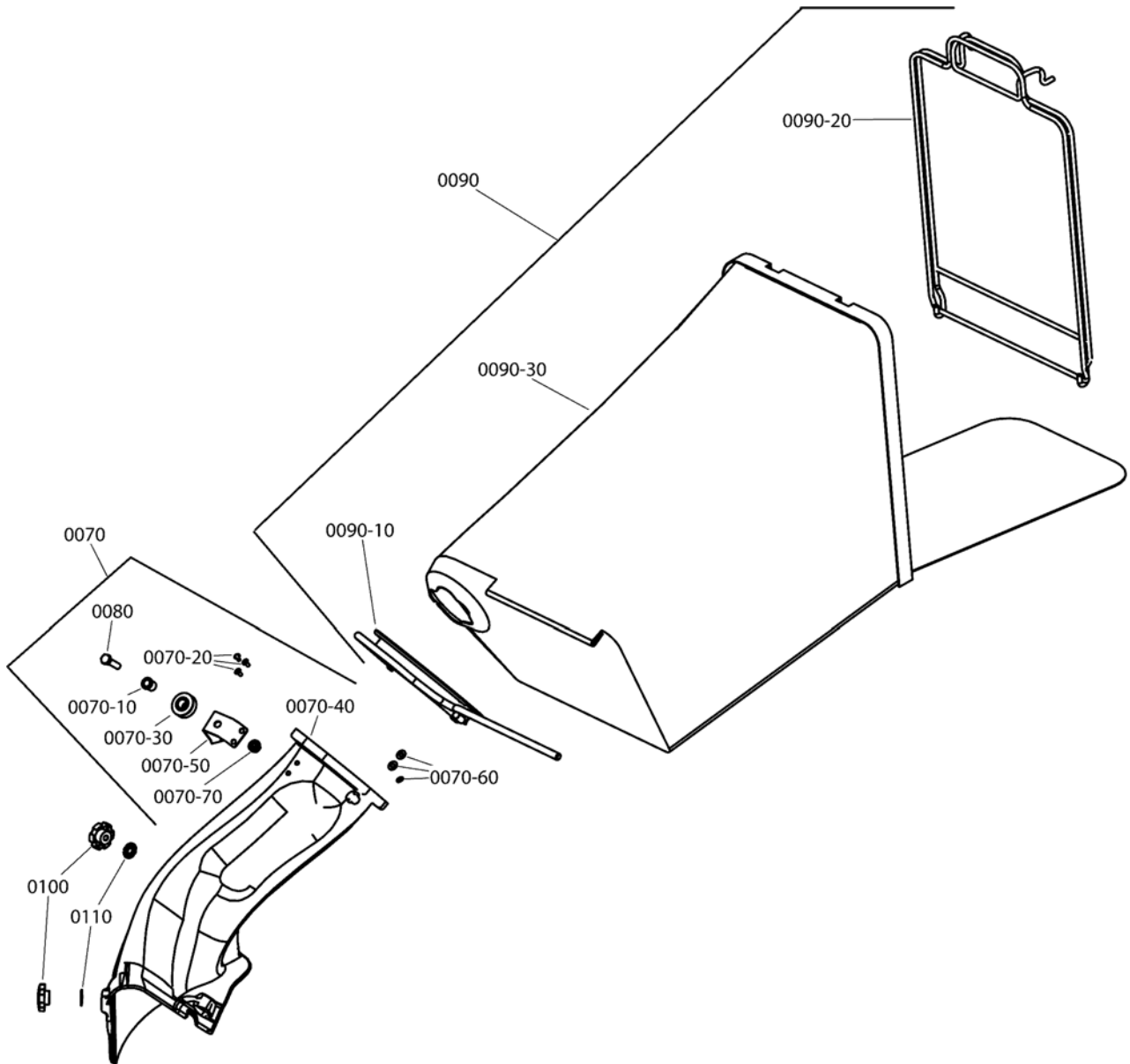
Footnotes:

Transmission Assembly



Item	Part No	Qty	Description
0020	7012354YP	1	BELT, Poly-V, V21
0030	7012616YP	1	SUPPORT, Foot Guard
0040	----		GREASE, Darina 00 (Not Shown, Use 4oz. Max)
0050	703931	1	PLUG, Transmission Housing, .702 OD
0060	7029008YP	1	GUARD, Foot
0090	703978	1	BOLT, 1/4-20 X 1/2, Carriage, GR5 YZ
0100	703127	1	NUT, 1/4-20, G5 Zinc/Clear
0110	7090391SM	1	WASHER, 5/16, Internal Lock, Zinc/Clear
0120	1753983YP	1	SCREW, 5/16-18 x 5/8 Truss Head Torx
0130	703462	1	WASHER, 1/4 Internal Tooth Lock, YZ
0140	7053943YP	1	ASSEMBLY, Transmission, 21P
0140-10	7011110YP	4	SHAFT, Pinion, .471 OD, 1.5" Long
0140-40	7011774YP	1	GASKET, V21
0140-50	7012495YP	1	GEAR, 46T, V21
0140-60	703933	4	SPACER, .700 OD x .480 ID x .380 L, ZC/CL
0140-80	7019213YP	1	PULLEY, Poly-V (3.5 O.D.)
0140-90	7021115YP	4	GEAR, Pinion (12 Tooth, .625 Thick)
0140-100	7031965YP	2	WASHER, 1.25 X .765 X .03, Thrust, ZC/CL
0140-110	7031970YP	2	PLATE, Differential Gear, V21
0140-120	7050767YP	1	ASSEMBLY, Input Gear
0140-130	7051903AYP	1	WELDMENT, Differential Bracket
0140-140	703934	1	SPACER, .820 OD X .720 ID X .330 L
0140-20	7050830YP	1	ASSEMBLY, Short Axle
0140-30	7050831YP	1	ASSEMBLY, Long Axle
0150	7053939YP	1	ASSEMBLY, Left Housing
0150-10	7012314YP	2	SEAL, 5/8" ID
0150-20	7029033YP	1	HOUSING, Left Hand
0150-30	7029035YP	2	BEARING, Tapered, Differential Housing
0160	7051908YP	1	ASSEMBLY, Housing, Right Hand
0160-30	703935	3	BOLT, 5/16-24 x 1-1/8" Rib Neck, GR 5, ZC/BK
0160-40	7024442YP	3	GASKET, 5/8" O.D.
0160-50	7029034YP	1	HOUSING, Right Hand
0160-70	7073963YP	1	BEARING, Ball, 1.125 OD, .440 ID, 3.8 Wide
0170	703936	3	WASHER, .325 ID X .850 OD X .041 Thk, Internal External Lock, Type A, ZC/CL
0180	703937	4	NUT, #10-32, Nyloc, GR A, ZC/CL
0190	703938	4	SCREW, #10-32 x 1-1/2 Hex Head Cap GR5, ZC/CL
0210	703349	1	WASHER, .453 X .75 X .073, Flat, ZC/CL
0220	703459	4	NUT, 5/16-24, Hex Crown Lock, GR C, Zinc/Clear
0230	703939	1	WASHER, .32 ID x 1.40 OD x .10 Thk, Bellville, ZC/CL
0240	703833	4	SCREW, 1/4-20 x 1 Hex Washer Self-Tap, ZC/CL
0250	7034179BMYP	1	LINK, Differential, Commercial
0260	703940	1	WASHER, 0.445 ID X 0.780 OD X 0.025 Thk, Wave, ZC/CL

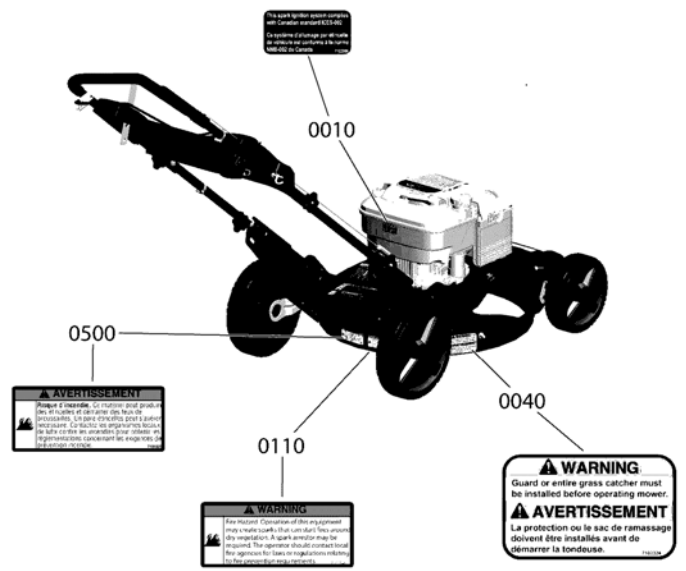
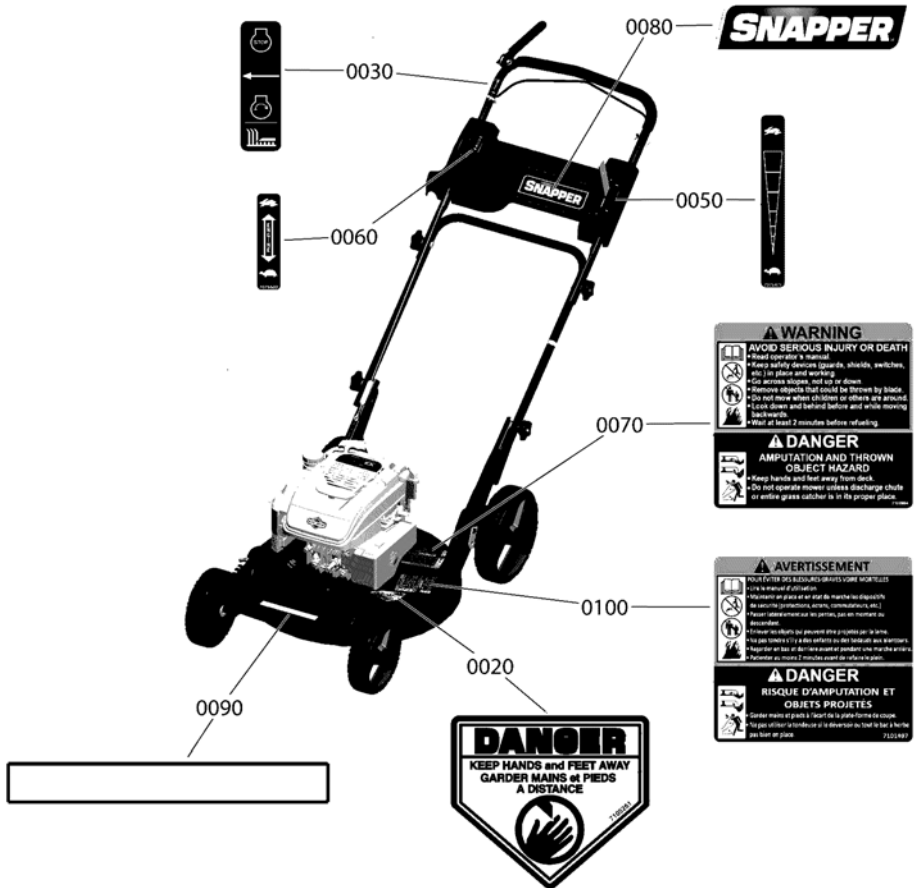
Footnotes:



Item	Part No	Qty	Description
0070	7600117YP	1	KIT, Bag Adapter Assembly, W/pulley
0070-10	703973	1	BUSHING, Flanged, .381 x .625 x .62, Metal, CZ/CL
0070-20	704032	3	RIVET, 3/16 x .344, Truss HD, ZC/CL
0070-30	7024228SM	1	PULLEY, Nylon, .75 ID, 1.3 OD
0070-40	----	1	CHUTE, USE 7600117
0070-50	7047082AYP	1	BRACKET, Rope Pulley
0070-60	703942	3	WASHER, 5/32 Flat, ZC/CL
0070-70	703409	1	NUT, 5/16-18, Serated Lock Flange, GR5, Zinc/Clear
0080	703570	1	SCREW, 5/16-18 X 1.25, Torx Pan Head, GR 5, Zinc/Clear
0090	7500153YP	1	ASSEMBLY, Grass Bag, Door, No Graphics, 12.5" W, 26.5" L
0090-10	7042489AYP	1	WELDMENT, Bag Connector
0090-20	7051906AYP	1	ASSEMBLY, Bag Wire, 12.25" Wide
0090-30	7100433YP	1	GRASS BAG, Door, No Graphics, 12.5" W, 26.5" L
0100	7101022YP	2	KNOB, (5/16-18 X 1/2 Thread) Fluted
0110	703936	2	WASHER, .325 ID X .850 OD X .041 Thk, Internal External Lock, Type A, ZC/CL

Not for
Reproduction

Footnotes:



Item	Part No	Qty	Description
0010	7102996YP	1	DECAL, ICES, Canadian Spark Compliance
0020	7105261YP	1	DECAL, CPSC, French/English
0030	7029782MA	1	DECAL, OPC Bail International Symbol
0040	7102324YP	1	DECAL, Chute / Deflector FC
0050	7075471YP	1	DECAL, Speed Shift
0060	7075532YP	1	DECAL, Throttle Control, B&S
0070	7100984YP	1	DECAL, Warning/Danger Walk-Behind Mower
0080	7104148YP	1	DECAL, Logo, Snapper, 7.88"
0090	7104853YP	1	DECAL, Front Cover, High Vac
0100	7101497YP	1	DECAL, Warning/Danger, French/English
0110	7102746YP	1	DECAL, Spark Arrestor
0500	7106039YP	1	DECAL, Spark Arrestor, French

Not for
Reproduction

Footnotes:

Not for
Reproduction

Hardware Identification & Torque Specifications

Torque Specification Chart								
FOR STANDARD METRIC MACHINE HARDWARE (Tolerance ± 20%)								
Property Class	5.6		8.8		10.9		12.9	
	Class 5.6		Class 8.8		Class 10.9		Class 12.9	
Size Of Hardware	in/lbs		in/lbs		in/lbs		in/lbs	
	ft/lbs	Nm.	ft/lbs	Nm.	ft/lbs	Nm.	ft/lbs	Nm.
M3	5.88	.56	13.44	1.28	19.2	1.80	22.92	2.15
M4	13.44	1.28	30.72	2.90	43.44	4.10	52.56	4.95
M5	26.4	2.50	60.96	5.75	5.97	8.10	7.15	9.7
M6	44.64	4.3	7.3	9.9	10.3	14	12.1	16.5
M7	5.2	7.1	12.1	16.5	16.9	23	19.9	27
M8	7.7	10.5	17.7	24	25	34	29	40
M10	15	21	35	48	50	67	59	81
M12	26	36	61	83	86.2	117	103	140
M14	42	58	101	132	136	185	162	220
M16	64	88	147	200	210	285	250	340
M18	89	121	202	275	287	390	346	470
M20	126	171	290	390	405	550	486	660
M22	169	230	390	530	559	745	656	890
M24	217	295	497	375	708	960	840	1140
M27	320	435	733	995	1032	1400	1239	1680
M30	435	590	995	1350	1401	1900	1681	2280
M33	590	800	1349	1830	1902	2580	2278	3090
M36	759	1030	1740	2360	2441	3310	2935	3980
M39	988	1340	2249	3050	3163	4290	3798	5150

Torque Specification Chart						
FOR STANDARD MACHINE HARDWARE (Tolerance ± 20%)						
Hardware Grade	No Marks		SAE Grade 5		SAE Grade 8	
	SAE Grade 2		SAE Grade 5		SAE Grade 8	
Size Of Hardware	in/lbs		in/lbs		in/lbs	
	ft/lbs	Nm.	ft/lbs	Nm.	ft/lbs	Nm.
8-32	19	2.1	30	3.4	41	4.6
8-36	20	2.3	31	3.5	43	4.9
10-24	27	3.1	43	4.9	60	6.8
10-32	31	3.5	49	5.5	68	7.7
1/4-20	66	7.6	8	10.9	12	16.3
1/4-28	76	8.6	10	13.6	14	19.0
5/16-18	11	15.0	17	23.1	25	34.0
5/16-24	12	16.3	19	25.8	29	34.0
3/8-16	20	27.2	30	40.8	45	61.2
3/8-24	23	31.3	35	47.6	50	68.0
7/16-14	30	40.8	50	68.0	70	95.2
7/16-20	35	47.6	55	74.8	80	108.8
1/2-13	50	68.0	75	102.0	110	149.6
1/2-20	55	74.8	90	122.4	120	163.2
9/16-12	65	88.4	110	149.6	150	204.0
9/16-18	75	102.0	120	163.2	170	231.2
5/8-11	90	122.4	150	204.0	220	299.2
5/8-18	100	136	180	244.8	240	326.4
3/4-10	160	217.6	260	353.6	386	525.0
3/4-16	180	244.8	300	408.0	420	571.2
7/8-9	140	190.4	400	544.0	600	816.0
7/8-14	155	210.8	440	598.4	660	897.6
1-8	220	299.2	580	788.8	900	1,244.0
1-12	240	326.4	640	870.4	1,000	1,360.0

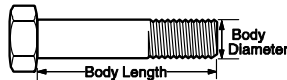
The guides and ruler furnished below are designed to help you select the appropriate hardware.



Nut, M8

Thread Diameter (mm)
Inside Diameter (in) Threads per inch

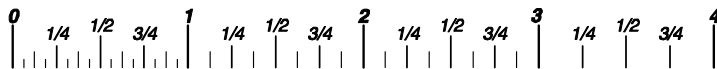
Nut, 1/2-16



Screw, M8- 1.25 x 25

Thread Diameter (mm) Distance between threads (mm) Body Length (mm)
Body Diameter Threads per inch Body Length (in)

Screw, 1/2- 16 x 2



Standard Hardware Sizing

When a washer or nut is identified as 1/2" (M8), this is the *Nominal size*, meaning the *inside diameter* is 1/2 inch (8mm metric thread diameter); if a second number is present it represents the *threads per inch* (distance between threads).

When bolt or capscrew is identified as 1/2 - 16 x 2" (M8 - 1.25 x 50), this means the *Nominal size*, or body diameter is 1/2 inch (8mm metric thread diameter), the second number, 16, represents the *threads per inch*, (1.25 thread diameter). The final number is the body length of the bolt or screw, 2 inches (50mm).

NOTES

- These torque values are to be used for all hardware excluding: locknuts, self-tapping screws, thread forming screws, sheet metal screws and socket head setscrews.
- Recommended seating torque values for locknuts:
 - for prevailing torque locknuts - use 65% of grade5 torques.
 - for flange whizlock nuts and screws - use 135% of grade 5 torques.
- Unless otherwise noted on assembly drawings, all torque values must meet this specification.

Common Hardware Types

Hex Head Capscrew



Washer



Carriage Bolt



Lockwasher



Hex Nut



Wrench & Fastener Size Guide

1/4" Bolt or Nut Wrench—7/16"	5/16" Bolt or Nut Wrench—1/2"	3/8" Bolt or Nut Wrench—9/16"	7/16" Bolt or Nut Wrench (Bolt)—5/8" Wrench (Nut)—11/16"	1/2" Bolt or Nut Wrench—3/4"
M6 Bolt or Nut Wrench—10mm	M8 Bolt or Nut Wrench—13mm	M10 Bolt or Nut Wrench—17mm	M12 Bolt or Nut Wrench—19mm	M14 Bolt or Nut Wrench—22mm

Parts Manual for

SNAPPER®

21" STEEL DECK WALK BEHIND MOWER SERIES 20

Not for
Reproduction

IT IS THE POLICY OF BRIGGS & STRATTON CORP TO IMPROVE ITS PRODUCTS WHENEVER IT IS POSSIBLE AND PRACTICAL TO DO SO. WE RESERVE THE RIGHT TO MAKE CHANGES OR ADD IMPROVEMENTS AT ANY TIME WITHOUT INCURRING ANY OBLIGATION TO MAKE SUCH CHANGES ON PRODUCTS

Briggs & Stratton Yard Power Products Group

535 Macon Road
McDonough, GA, 30253 U.S.A.
800-935-2967

www.snapper.com

Copyright © 2014 Briggs & Stratton Corporation
Milwaukee, WI USA. All Rights Reserved

Manual No. 7106265

Revision: - 4/7/2014