

*Parts Manual for*  
**SNAPPER®**

**21" STEEL DECK PUSH  
WALK BEHIND MOWER  
SERIES 20 (2014)**

*Model No.      Description*

*7800946-00    2187520*



Not for  
Reproduction

<b>PAGE</b>	<b>GROUP</b>
4	Handle Group
6	Wheel Group
8	Engine Group
10	Bag Group
12	Decal Group

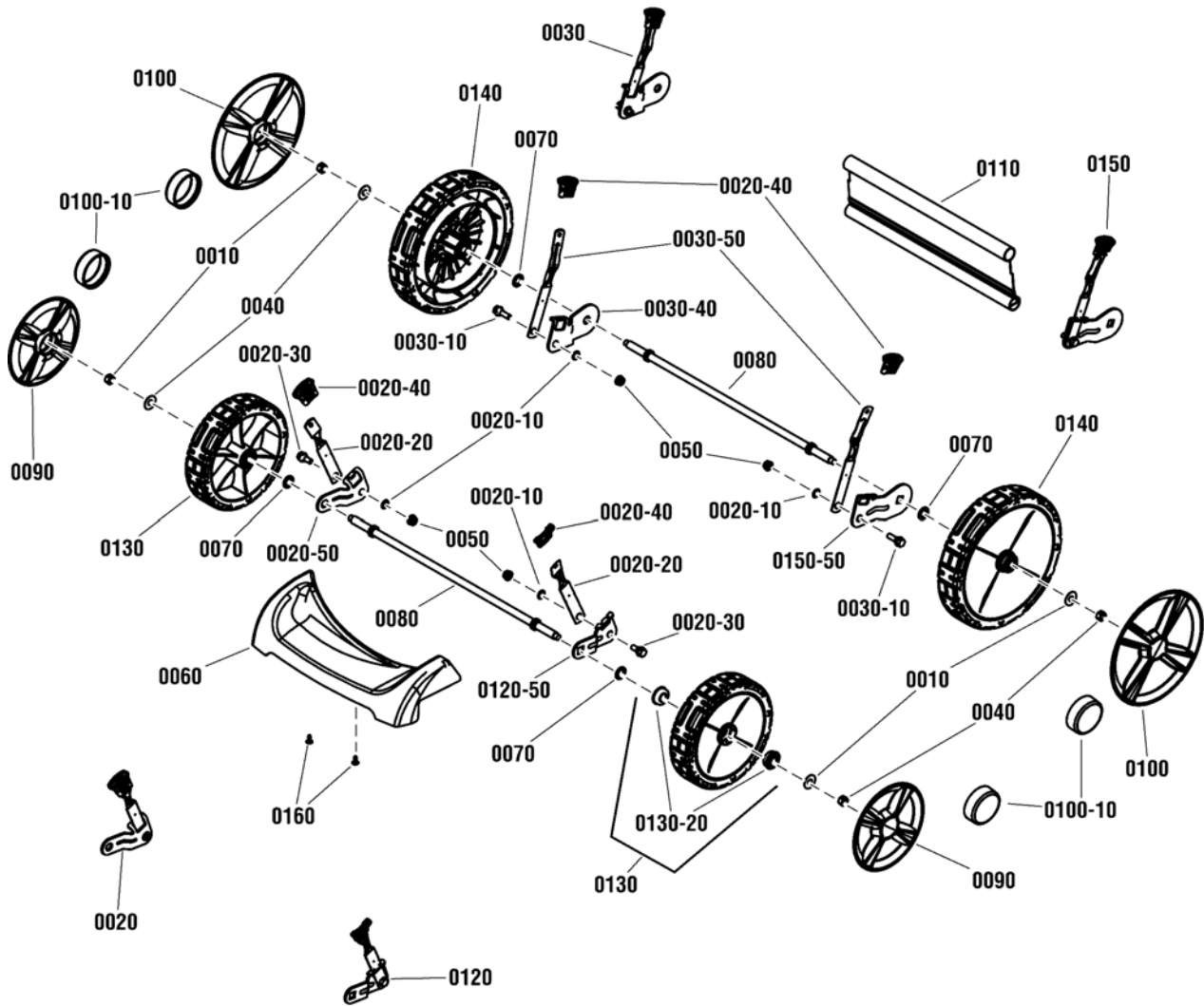
Not for  
Reproduction



<b>Item</b>	<b>Part No</b>	<b>Qty</b>	<b>Description</b>
0010	7024641YP	5	WIRE TIE, 5.5" L
0020	690798	1	CLAMP, Casing
0030	704324	1	SCREW, #10-32 X .615, Hex Head Cap Slotted, Zinc/Clear
0040	7106258AYP	1	HANDLE, Upper
0040-10	7028488MA	1	GUIDE, 1/4-20, Rope, CL/ZC
0040-20	7102593YP	1	CABLE, Zone Control, W14, 52.661" L (Used on 7800946-00)
0040-20	7106257YP	1	CABLE, Zone Control, W14, 50.55" L, Over the Top (Used on 7800946-01)
0040-30	7034872YP	1	CLIP, Zone Control (Used on 7800946-00)
0040-40	703232	1	NUT, 1/4-20, Nylock, GR A, Zinc/Clear
0040-50	703234	2	SCREW, 1/4-20 X 1.5, Hex Head Cap, GR5, ZC/CL
0040-70	703127	3	NUT, 1/4-20, G5 Zinc/Clear
0040-100	703589	1	CAPSCREW, 3/8-16 x 2, G5, Hex Head
0040-110	703347	2	NUT, 3/8-16, Hex Center-Lock, GR B, Zinc/Clear
0040-140	7074418AYP	1	BAIL, OPC Control (16.6" Wide), Black (Used on 7800946-00)
0040-140	7106255AYP	1	BAIL, OPC, Control, Over The Top, Black (Used on 7800946-01)
0050	7102594YP	1	CONTROL, Throttle, W14, 63.12" L
0050-20	7075308YP	1	KNOB, Throttle, Red
0060	703462	5	WASHER, 1/4 Internal Tooth Lock, YZ
0070	7090391SM	4	WASHER, 5/16, Internal Lock, Zinc/Clear
0080	703163	3	SCREW, 1/4-20 X 2.0, Hex Head Cap, GR5, Zinc/Clear (Used on 7800946-00)
0080	7091003YP	1	CAPSCREW, 1/4-20 x 1-3/4, G5, Hex Head (Used on 7800946-01)
0090	7074003YP	1	BRACKET, Shift, Black Zinc
0100	703059	4	BOLT, 5/16-18 X 2.00 Conical Head, SN ZC/CL
0120	7023810YP	1	FOAM GRIP, 18.75"
0130	7105085YP	4	KNOB, 5/16-18, Handle, Fluted 5 Prong, Black
0140	7033985AYP	1	HANDLE, Lower, ADJ, LH
0150	7033986AYP	1	HANDLE, Lower, ADJ, RH
0160	7106232AYP	1	HANDLE, Middle, Black
0170	703409	4	NUT, 5/16-18, Serated Lock Flange, GR5, Zinc/Clear
0180	703354	4	SCREW, 5/16-18 X .750, Flanged Whiz-Lock, GR5
0190	7073826YP	1	PANEL, Control (w/o Ground Drive Slot) (Used on 7800946-00)
0190	7106280YP	1	PANEL, Control, Push, With Throttle Slot (Used on 7800946-01)
0200	703961	4	SCREW, 1/4-20 X .550, Self-Tapping, Zinc/Clear

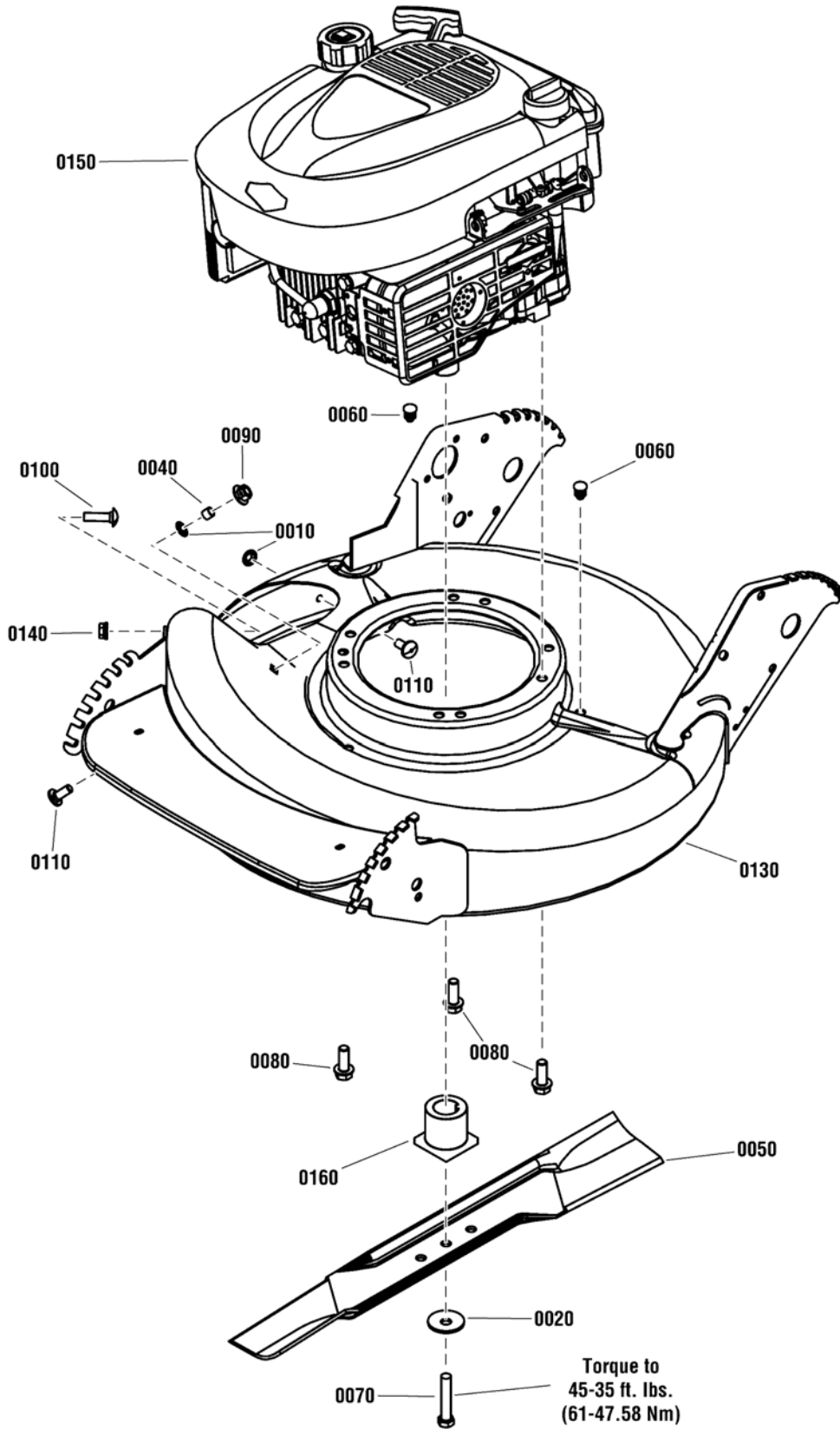
**Footnotes:**

# Wheel Group



<b>Item</b>	<b>Part No</b>	<b>Qty</b>	<b>Description</b>
0010	703966	4	WASHER, 1 OD x .387 ID, Flat
0020	7600180YP	1	KIT, Front Wheel Arm Assembly, RH
0020-10	703297	4	RETAINER, 5/16 X .625, Push Nut, GR 5, Zinc/Clear
0020-20	7012325YP	2	LATCH, Height
0020-30	703839	2	BOLT, 5/16-18 X .750, Hex Washer Head Shoulder, Zinc/Clear
0020-40	7103793YP	4	GRIP, Height Latch, Black
0020-50	7031017YP	1	WHEEL ARM, Front, Round Hole, RH, Clear
0030	7054228YP	1	ASSEMBLY, Wheel Arm, Right Rear (Round hole) (Push)
0030-10	703840	2	BOLT, 5/16-18 X 1.0, Hex Washer Head .435 Dia. Shoulder, ZC/CL
0030-40	7033776YP	1	WHEEL ARM, Rear R.H. Push Models (round hole) Zinc/Clear
0030-50	7035717YP	2	LATCH, Height Adjusting, (long)
0040	703347	4	NUT, 3/8-16, Hex Center-Lock, GR B, Zinc/Clear
0050	703409	4	NUT, 5/16-18, Serated Lock Flange, GR5, Zinc/Clear
0060	7100196YP	1	COVER, Front 21" Walk (Used on 7800946-00)
0070	703835	4	WASHER, Shim, .875 x .531 x .060
0080	7100752YP	2	AXLE, Easy Line (20.44" L, 3/8-16 Threads)
0090	7101350YP	2	HUBCAP, 8" & 9" Spoked Wheel, 6.51" OD, Gray (Used on 7800946-00)
0100	7102625YP	2	HUBCAP, 10" Wheel, Spoked, 8.51" OD, Gray (Used on 7800946-00)
0100-10	7106302YP	4	HUBCAP, Round, 1.7" OD, Gray (Used on 7800946-01)
0110	7103210YP	1	GUARD, Rear, 21" Push, 16.13" L
0120	7600183YP	1	KIT, Front Left Wheel Arm Assembly (.512 Square Hole)
0120-50	7011393YP	1	WHEEL ARM, L.H. Front (.512 Square Hole) CZ/CL
0130	7500540YP	2	ASSEMBLY, Wheel, 8" X 2" Idle w/Bearings, Gray (Used on 7800946-00)
0130	7503282YP	2	ASSEMBLY, Wheel, 8" X 2" Idle w/Bearings, Gray (Used on 7800946-01)
0130-20	7101380YP	8	BALL BEARING, Flange, 1-1/8 O.D. (Not Shown)
0140	7501092YP	2	ASSEMBLY, Wheel, 10" x 2" Push, BB, Snapper Tread Charcoal Gray (Used on 7800946-00)
0140	7503281YP	2	ASSEMBLY, Wheel, 10" x 2" Push, BB, Snapper Tread Charcoal Gray (Used on 7800946-01)
0150	7600175YP	1	KIT, Wheel Arm Assembly, Left Rear Long (Push)
0150-50	7102587YP	1	WHEEL ARM, Rear, LH, Clear Zinc
0160	703834	2	SCREW, 4.8MM X 1.59MM X 13MM, Torx Round Washer Head, HI-LO, ZC/CL (Used on 7800946-00)

**Footnotes:**





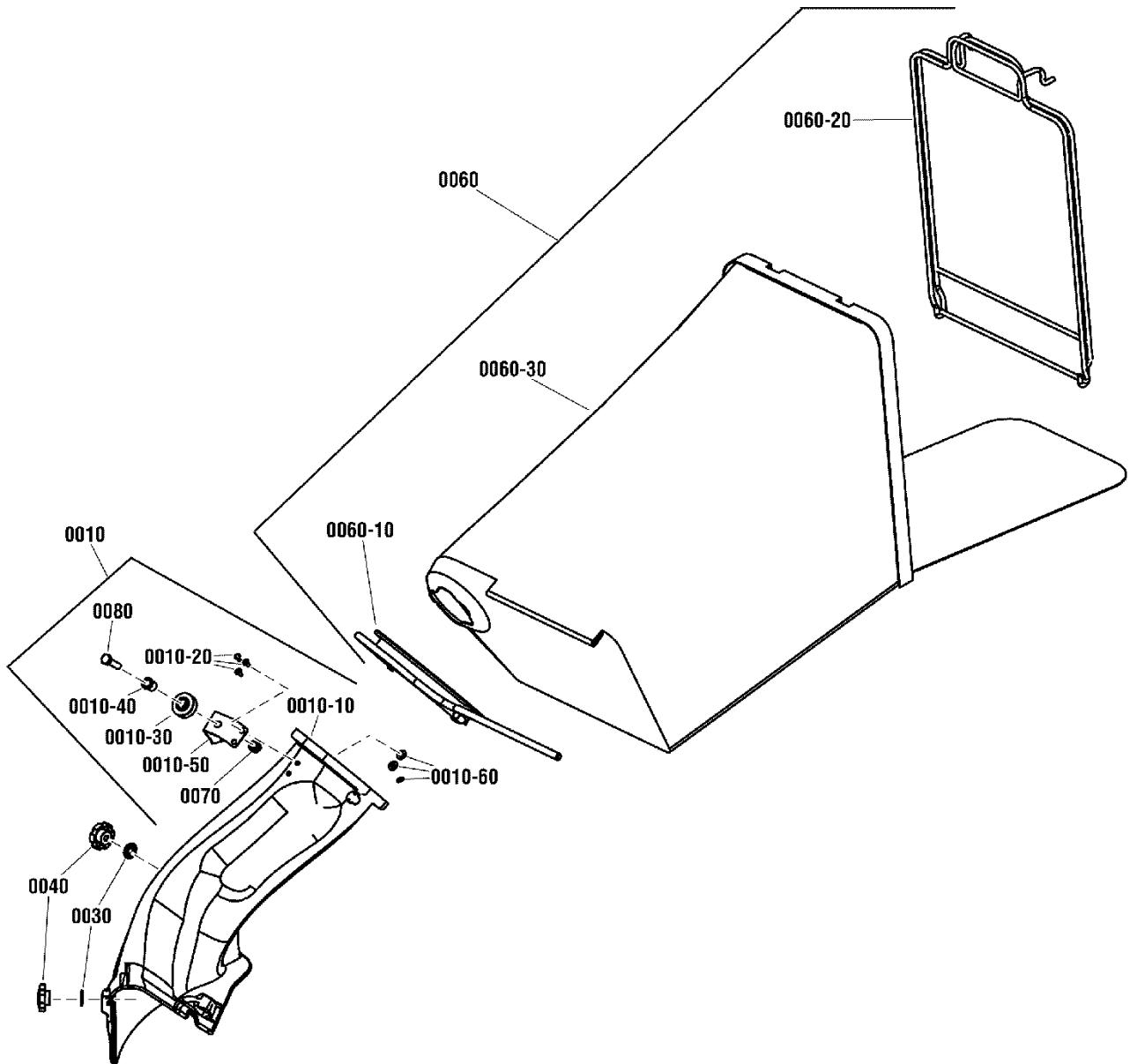
<b>Item</b>	<b>Part No</b>	<b>Qty</b>	<b>Description</b>
0010	703297	2	RETAINER, 5/16 X .625, Push Nut, GR 5, Zinc/Clear
0020	703963	1	WASHER, 13/32x1-13/32" Dia. Cone
0040	7024340SM	1	SPACER, .375 OD X .316 ID X .305 L
0050	7026691BZYP	1	BLADE, 21" L, .97" Standard Lift
0060	7046780SM	2	PLUG, Hole, .44" OD, Polyethylene
0070	703999	1	SCREW, 3/8-24 X 2, Hex Head Cap, GR5
0080	704000	3	SCREW, 3/8-16 X 1.0, Hex Washer Self-Tap, ZC/CL
0090	704001	1	NUT, 5/16-18 Large Flange Center Lock, ZC/CL
0100	704002	1	BOLT, 5/16-18 X 1.125, Carriage, ZC/CL
0110	703185	2	BOLT, 5/16-18 x 3/4, Carriage, Short Neck, G5, Zinc/Clear
0130	7500549DYP	1	KIT, Deck Weldment, 21", Part Sales, HV, SP, ES (red, w/decals)
0140	703409	1	NUT, 5/16-18, Serated Lock Flange, GR5, Zinc/Clear
0150	121S02-0066-F1	1	* ENGINE, B&S 8.75 GT, PRO Model 121S02-0066-F1
0160	7015626YP	1	HUB, Blade Drive, .25MM ID

Not for  
Reproduction

**Footnotes:**

NOTE: \* Purchase engine parts from engine manufacturer dealer.

7502650

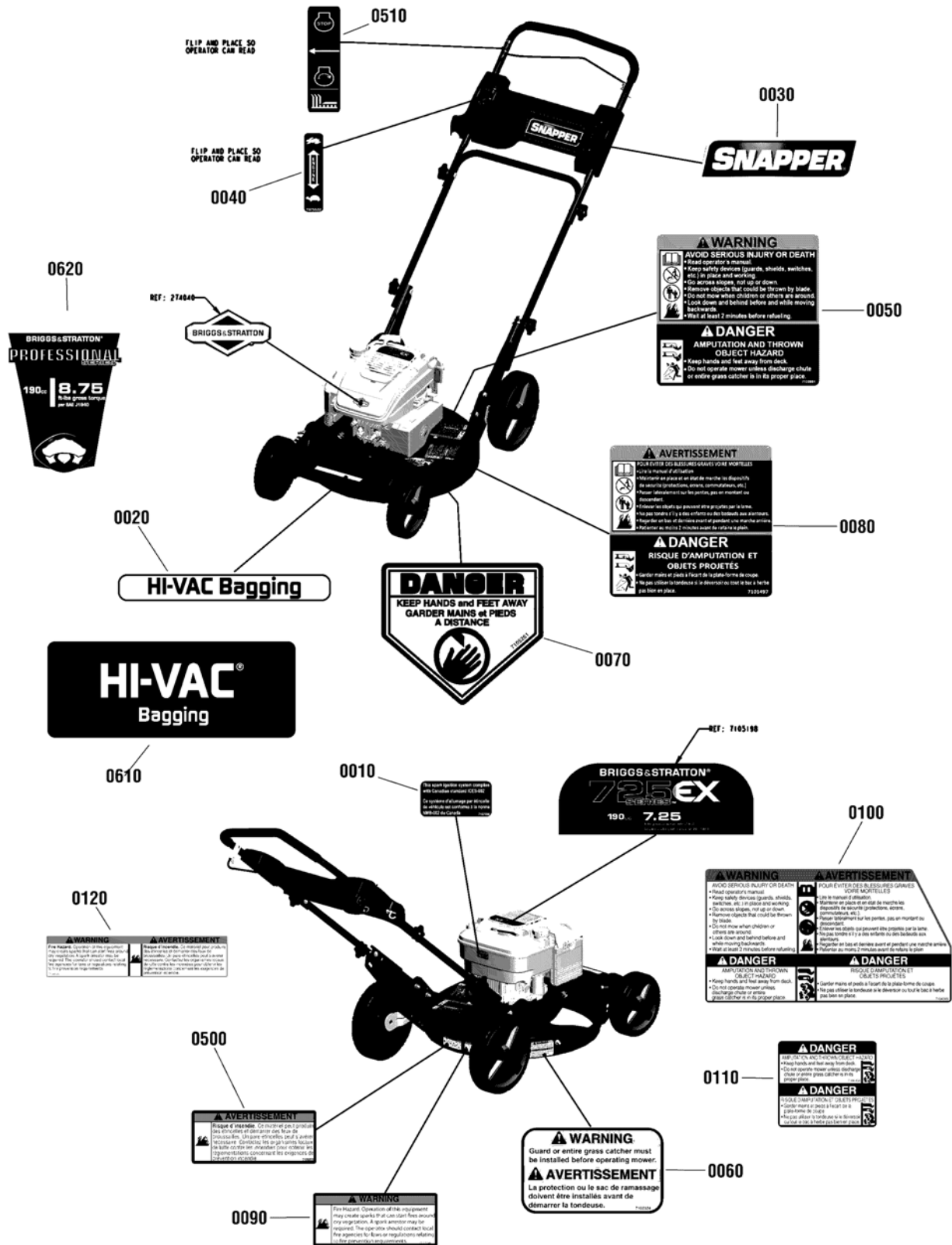


---

<b>Item</b>	<b>Part No</b>	<b>Qty</b>	<b>Description</b>
0010	7600117YP	1	KIT, Bag Adapter Assembly, W/pulley (Includes items 6 - 13)
0010-10	----	1	USE 7600117, Bag Adapter
0010-20	704032	3	RIVET, 3/16 x .344, Truss HD, ZC/CL
0010-30	7024228SM	1	PULLEY, Nylon, .75 ID, 1.3 OD
0010-40	703973	1	BUSHING, Flanged, .381 x .625 x .62, Metal, CZ/CL
0010-50	7047082AYP	1	BRACKET, Rope Pulley
0010-60	703942	3	WASHER, 5/32 Flat, ZC/CL
0030	703936	2	WASHER, .325 ID X .850 OD X .041 Thk, Internal External Lock, Type A, ZC/CL
0040	7101022YP	2	KNOB, Fluted (5/16-18 thread) on side chute
0060	7500153YP	1	ASSEMBLY, Grass Bag, Door, No Graphics, 12.5" W, 26.5" L
0060-10	7042489AYP	1	WELDMENT, Bag Connector
0060-20	7051906AYP	1	ASSEMBLY, Bag Wire, 12.25" Wide
0060-30	7100433YP	1	GRASS BAG, Door, No Graphics, 12.5" W, 26.5" L
0070	703409	1	NUT, 5/16-18, Serated Lock Flange, GR5, Zinc/Clear
0080	703570	1	SCREW, 5/16-18 X 1.25, Torx Pan Head, GR 5, Zinc/Clear

Not for  
Reproduction

**Footnotes:**



---

<b>Item</b>	<b>Part No</b>	<b>Qty</b>	<b>Description</b>
0010	7102996YP	1	DECAL, ICES, Canadian Spark Compliance
0020	7104853YP	1	DECAL, Front Cover, High Vac
0030	7104148YP	1	DECAL, Logo, Snapper, 7.88"
0040	7075532YP	1	DECAL, Throttle Control, B&S
0050	7100984YP	1	DECAL, Warning / Danger
0060	7102324YP	1	DECAL, Chute / Deflector FC
0070	7105261YP	1	DECAL, CPSC, French/English
0080	7101497YP	1	DECAL, Warning / Danger, French /English
0090	7102746YP	1	DECAL, Spark Arrestor
0100	7106303YP	1	DECAL, Warning/Danger, English/French
0110	7106304YP	1	DECAL, Danger, English/French
0120	7106305YP	1	DECAL, Spark Arrestor, English/French
0500	7106039YP	1	DECAL, Spark Arrestor, French
0510	7029782MA	1	DECAL, OPC Bail International Symbol
0610	7106322YP	1	DECAL, HI-VAC
0620	7106319YP	1	DECAL, Turtle, 8.75TP

Not for  
Reproduction

**Footnotes:**

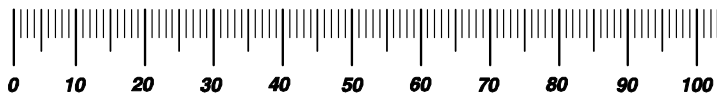
Not for  
Reproduction

# Hardware Identification & Torque Specifications

Torque Specification Chart								
FOR STANDARD METRIC MACHINE HARDWARE (Tolerance ± 20%)								
Property Class	5.6		8.8		10.9		12.9	
	Class 5.6		Class 8.8		Class 10.9		Class 12.9	
Size Of Hardware	in/lbs		in/lbs		in/lbs		in/lbs	
	ft/lbs	Nm.	ft/lbs	Nm.	ft/lbs	Nm.	ft/lbs	Nm.
M3	5.88	.56	13.44	1.28	19.2	1.80	22.92	2.15
M4	13.44	1.28	30.72	2.90	43.44	4.10	52.56	4.95
M5	26.4	2.50	60.96	5.75	5.97	8.10	7.15	9.7
M6	44.64	4.3	7.3	9.9	10.3	14	12.1	16.5
M7	5.2	7.1	12.1	16.5	16.9	23	19.9	27
M8	7.7	10.5	17.7	24	25	34	29	40
M10	15	21	35	48	50	67	59	81
M12	26	36	61	83	86.2	117	103	140
M14	42	58	101	132	136	185	162	220
M16	64	88	147	200	210	285	250	340
M18	89	121	202	275	287	390	346	470
M20	126	171	290	390	405	550	486	660
M22	169	230	390	530	559	745	656	890
M24	217	295	497	375	708	960	840	1140
M27	320	435	733	995	1032	1400	1239	1680
M30	435	590	995	1350	1401	1900	1681	2280
M33	590	800	1349	1830	1902	2580	2278	3090
M36	759	1030	1740	2360	2441	3310	2935	3980
M39	988	1340	2249	3050	3163	4290	3798	5150

Torque Specification Chart						
FOR STANDARD MACHINE HARDWARE (Tolerance ± 20%)						
Hardware Grade	No Marks		SAE Grade 5		SAE Grade 8	
	SAE Grade 2		SAE Grade 5		SAE Grade 8	
Size Of Hardware	in/lbs		in/lbs		in/lbs	
	ft/lbs	Nm.	ft/lbs	Nm.	ft/lbs	Nm.
8-32	19	2.1	30	3.4	41	4.6
8-36	20	2.3	31	3.5	43	4.9
10-24	27	3.1	43	4.9	60	6.8
10-32	31	3.5	49	5.5	68	7.7
1/4-20	66	7.6	8	10.9	12	16.3
1/4-28	76	8.6	10	13.6	14	19.0
5/16-18	11	15.0	17	23.1	25	34.0
5/16-24	12	16.3	19	25.8	29	34.0
3/8-16	20	27.2	30	40.8	45	61.2
3/8-24	23	31.3	35	47.6	50	68.0
7/16-14	30	40.8	50	68.0	70	95.2
7/16-20	35	47.6	55	74.8	80	108.8
1/2-13	50	68.0	75	102.0	110	149.6
1/2-20	55	74.8	90	122.4	120	163.2
9/16-12	65	88.4	110	149.6	150	204.0
9/16-18	75	102.0	120	163.2	170	231.2
5/8-11	90	122.4	150	204.0	220	299.2
5/8-18	100	136	180	244.8	240	326.4
3/4-10	160	217.6	260	353.6	386	525.0
3/4-16	180	244.8	300	408.0	420	571.2
7/8-9	140	190.4	400	544.0	600	816.0
7/8-14	155	210.8	440	598.4	660	897.6
1-8	220	299.2	580	788.8	900	1,244.0
1-12	240	326.4	640	870.4	1,000	1,360.0

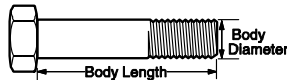
The guides and ruler furnished below are designed to help you select the appropriate hardware.



Nut, M8

Thread Diameter (mm)  
Inside Diameter (in)    Threads per inch

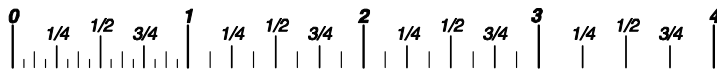
Nut, 1/2-16



Screw, M8- 1.25 x 25

Thread Diameter (mm)    Distance between threads (mm)    Body Length (mm)  
Body Diameter    Threads per inch    Body Length (in)

Screw, 1/2- 16 x 2



## Standard Hardware Sizing

When a washer or nut is identified as 1/2" (M8), this is the *Nominal size*, meaning the *inside diameter* is 1/2 inch (8mm metric thread diameter); if a second number is present it represents the *threads per inch* (distance between threads).

When bolt or capscrew is identified as 1/2 - 16 x 2" (M8 - 1.25 x 50), this means the *Nominal size*, or body diameter is 1/2 inch (8mm metric thread diameter), the second number, 16, represents the *threads per inch*, (1.25 thread diameter). The final number is the body length of the bolt or screw, 2 inches (50mm).

## NOTES

- These torque values are to be used for all hardware excluding: locknuts, self-tapping screws, thread forming screws, sheet metal screws and socket head setscrews.
- Recommended seating torque values for locknuts:
  - for prevailing torque locknuts - use 65% of grade5 torques.
  - for flange whizlock nuts and screws - use 135% of grade 5 torques.
- Unless otherwise noted on assembly drawings, all torque values must meet this specification.

## Common Hardware Types

Hex Head Capscrew



Washer

Lockwasher

Carriage Bolt



Hex Nut

## Wrench & Fastener Size Guide

1/4" Bolt or Nut Wrench—7/16"	5/16" Bolt or Nut Wrench—1/2"	3/8" Bolt or Nut Wrench—9/16"	7/16" Bolt or Nut Wrench (Bolt)—5/8" Wrench (Nut)—11/16"	1/2" Bolt or Nut Wrench—3/4"
M6 Bolt or Nut Wrench—10mm	M8 Bolt or Nut Wrench—13mm	M10 Bolt or Nut Wrench—17mm	M12 Bolt or Nut Wrench—19mm	M14 Bolt or Nut Wrench—22mm

*Parts Manual for*

# **SNAPPER®**

## **21" STEEL DECK PUSH WALK BEHIND MOWER SERIES 20 (2014)**

Not for  
Reproduction

IT IS THE POLICY OF BRIGGS & STRATTON CORP TO IMPROVE ITS PRODUCTS WHENEVER IT IS POSSIBLE AND PRACTICAL TO DO SO. WE RESERVE THE RIGHT TO MAKE CHANGES OR ADD IMPROVEMENTS AT ANY TIME WITHOUT INCURRING ANY OBLIGATION TO MAKE SUCH CHANGES ON PRODUCTS

**Briggs & Stratton Yard Power Products Group**

535 Macon Road  
McDonough, GA, 30253 U.S.A.  
800-935-2967

[www.snapper.com](http://www.snapper.com)

Copyright © 2015 Briggs & Stratton Corporation  
Milwaukee, WI USA. All Rights Reserved

**Manual No. 7106168**

**Revision: B 8/5/2015**