

*Parts Manual for*  
**SNAPPER®**

**REAR ENGINE RIDER  
HYDRO DRIVE RT RMO ACS  
SERIES 0**

<i>Model No.</i>	<i>Description</i>
1694615	RT1330
2690649	RT1330
1694616	RT1330E
2690249	RT1330E
2690250	RT1330E

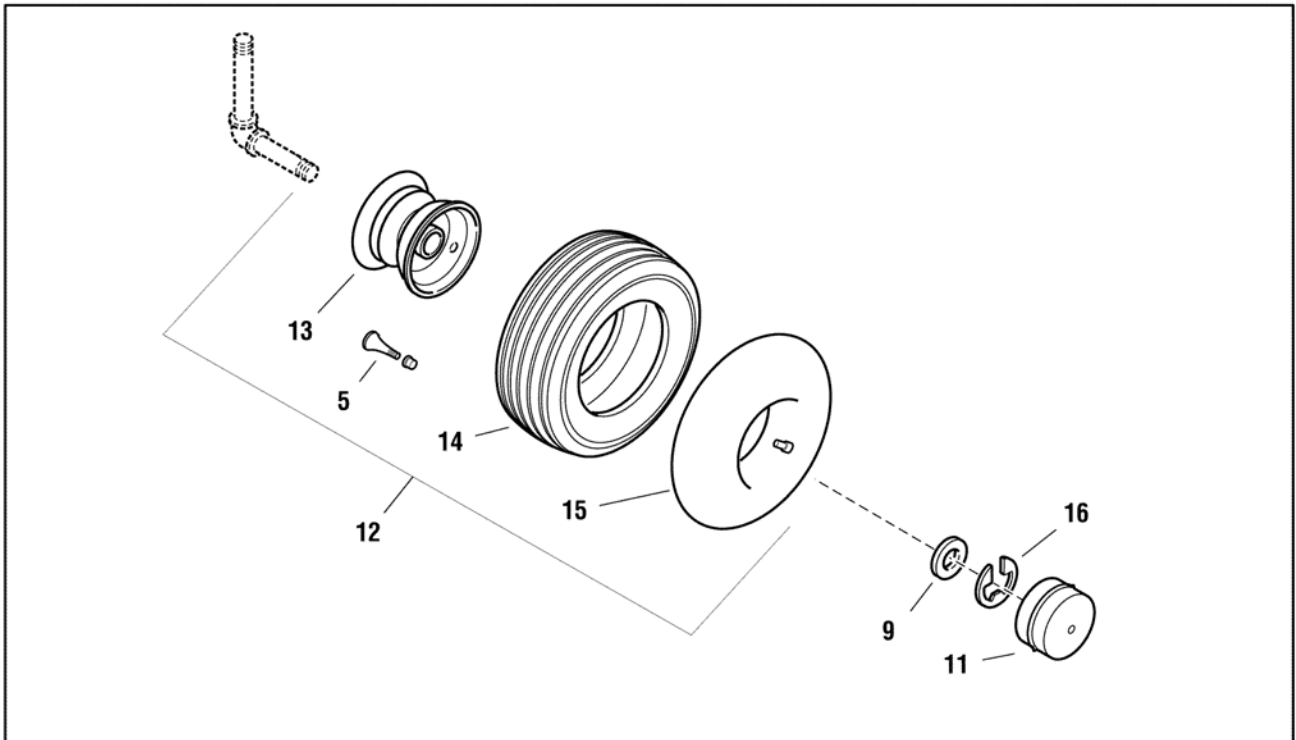
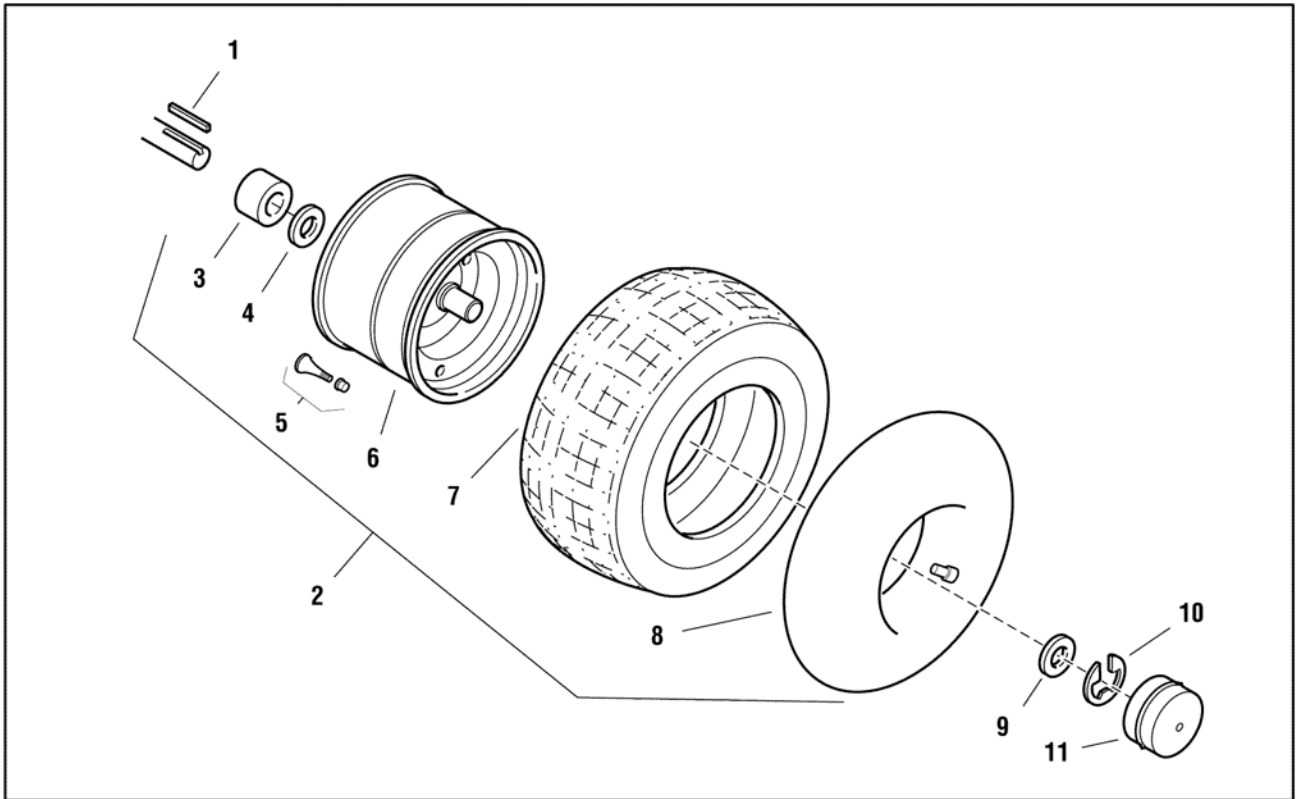


Not for  
Reproduction

<b>PAGE</b>	<b>GROUP</b>
4	Wheels & Tires Group
6	Front Column & Dash Group
10	Steering & Lift Group
12	Frame & Fuel System Group
16	Transmission Group - Hydro-Gear 340-0510
20	Engine & Electric Clutch Group - 13HP Briggs & Stratton Models
22	30" Mower Deck - Housing & Height Adjustment
26	30" Mower Deck - Drive & Arbor
28	Decals Group
30	Electrical Group

Not for  
Reproduction

**Wheels & Tires Group**



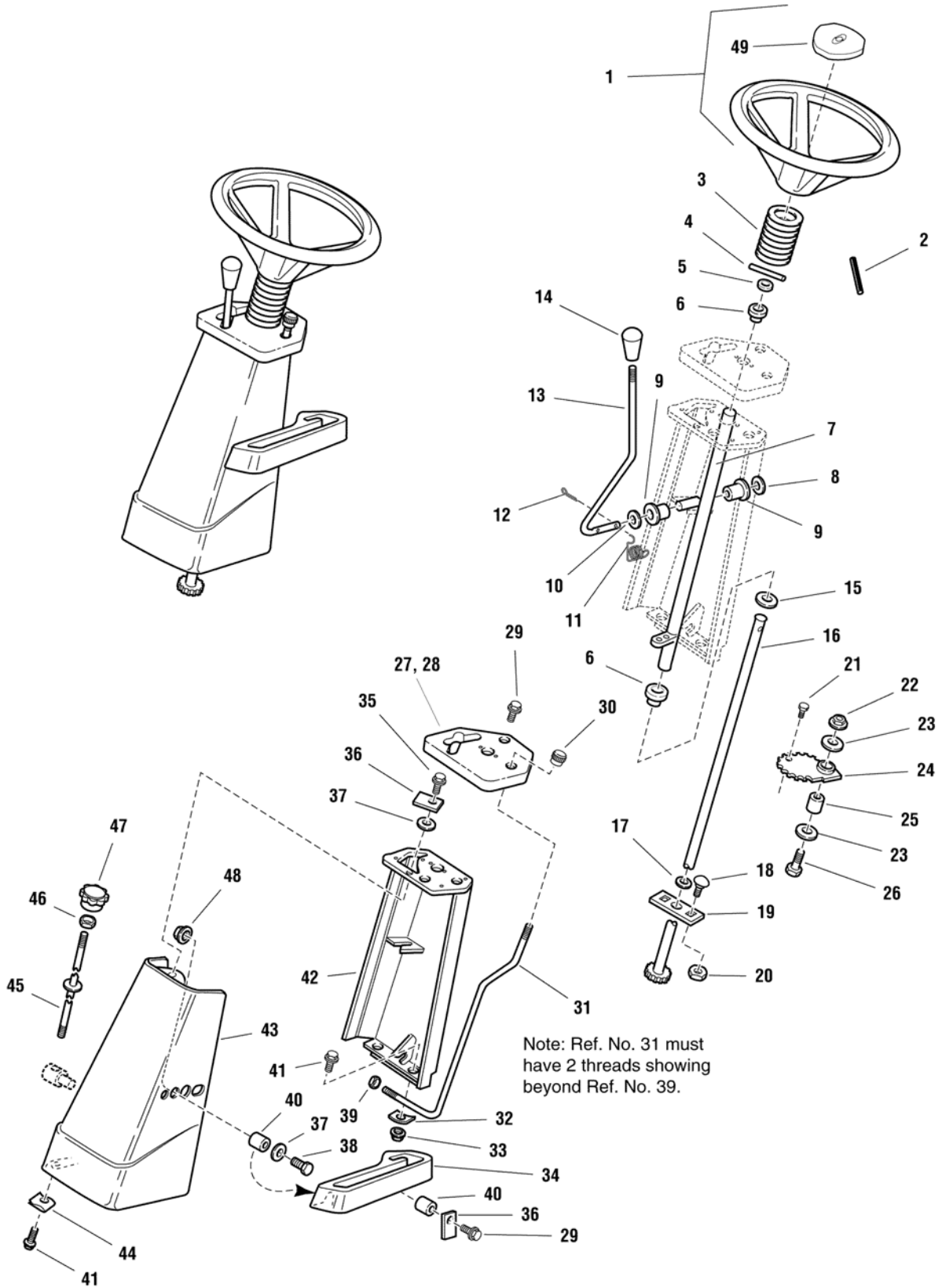
---

<b>Item</b>	<b>Part No</b>	<b>Qty</b>	<b>Description</b>
1	1729279	2	KEY, Square, 3/16 x 3/16 x 1-1/2 long
2	1723171	2	REAR WHEEL & TIRE ASSEMBLY, Hoosier, (Includes Ref. Nos. 3,
3	1717451	2	SPACER
4	2860202	2	WASHER, 3/4
5	2172353	4	VALVE STEM & CAP
6	1723400	2	REAR WHEEL ASSEMBLY, Metallic Gray
7	1723399	2	TIRE, Rear Wheel, 16 X 6.50-8
8	2164247	2	TUBE, Rear Tire, 16 X 6.50 - 8.00
9	1960160	4	WASHER, 3/4
10	2827794	2	E RING
11	1722675	4	HUB CAP, Silver
12	1723170	2	FRONT WHEEL & TIRE ASSEMBLY, Hoosier, 13 x 5.00-6, Metallic
13	1723402	2	FRONT WHEEL ASSEMBLY 13 x 5.00-6, Metallic Gray (Includes Re
14	1723401	2	TIRE, Front Wheel, 13 x 5.00-6
15	1664090	2	TUBE, Front Wheel, 4.10/3.50 x 6
16	1611710	2	KLIP RING
17	1752171	4	BUSHING, Flanged, 3/4" ID x 1.380" OD, Front Wheels (Not Shown)

Not for  
Reproduction

**Footnotes:**

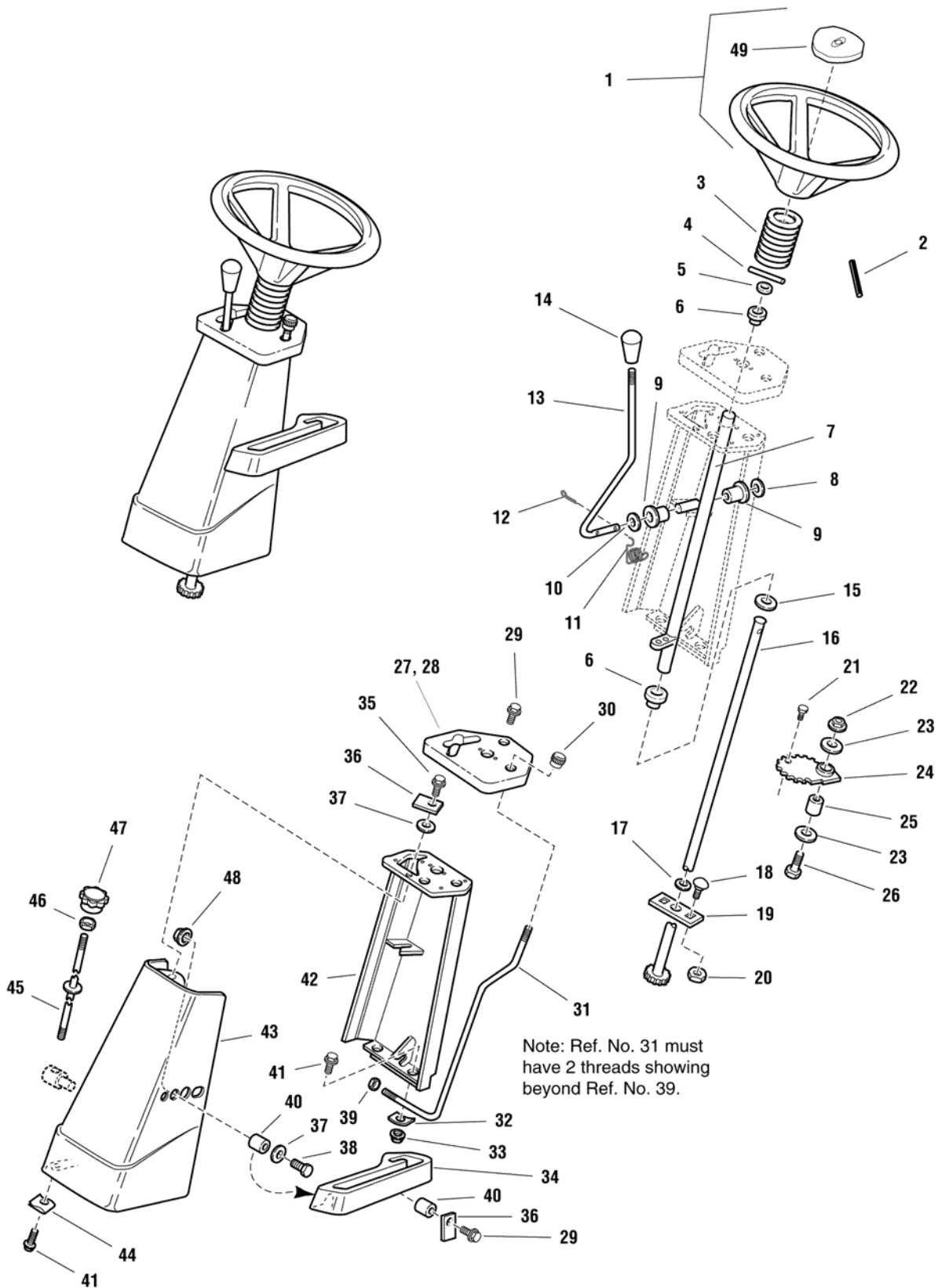
# Front Column & Dash Group



<b>Item</b>	<b>Part No</b>	<b>Qty</b>	<b>Description</b>
1	1713841	1	STEERING WHEEL ASSY (Incl. Ref. No. 49)
2	1960540	1	ROLL PIN, .188 x 1
3	1678381	1	TUBE, Steering
4	2916001	1	PIN
5	1960160	3	WASHER, 49/64
6	2176440	2	BUSHING, Nylon
7	1709229	1	TUBE ASSEMBLY, Shift
8	7090705	1	WASHER (Was 1960170)
9	1704428	2	BUSHING
10	7091587	1	WASHER, Plain, 17/32 x 1-1/4 x 7/64 (Was 1924361)
11	1707424	1	SPRING, Torsion
12	1918447	2	COTTER PIN, .094 x 3/4
13	1707375	1	ROD, Shift
14	1713843	1	KNOB, Rod, Shift
15	1960114	1	WASHER, Plain, 11/32 x 1 x 1/8
16	1706014	1	SHAFT & GEAR ASSY, Steering
17	173668	1	WASHER, Plain
18	1931350	2	CARRIAGE BOLT, 3/8-16 x 1 GR5
19	1703508A	1	PLATE, Steering Mounting
20	1928352	2	NUT, Hex, 3/8-16
21	7091540	1	CAPSCREW, Hex Head, 5/16-18 x 1-1/2 GR5 (Was 1921221)
22	3031355	1	NUT, Hex Flange Lock, 3/8-16 (Was 1960339)
23	1924356	3	WASHER, 13/32 x 1-1/2 x 1/8
24	1708426	1	GEAR, Steering
25	1666332	1	SPACER
26	1923701	1	CAPSCREW, Hex Head, 3/8-16 x 2 GR5
27	1714081	1	DASH, Hydro
28	1714082	1	DASH, Gear (Not Applicable)
29	1925592	3	CAPSCREW, Hex, Flange, Taptite, 1/4-20 x 3/4
30	1713855	1	KNOB, Rod, Parking Brake
31	1707057	1	ROD, Parking Brake
32	1933988	2	PUSH NUT, 5/16
33	1931277	2	NUT, Hex Flange, Whizlock, 5/16-18
34	1708965	1	QUADRANT, Lift
35	1925003	3	CAPSCREW, Hex Head, Taptite, 1/4-20 x 1/2
36	1709075	2	CLAMP, Dashboard
37	1921319	2	WASHER, Plain, 1/4
38	1924009	2	CAPSCREW, Hex Head, 1/4-20 x 7/8 GR5
39	1960608	1	NUT, Hex, Flange, 1/4-20
40	1678392	3	SPACER, 17/64 x 3/8 x 21/64
41	1930591	6	CAPSCREW, Hex Head, Whizlock, 5/16-18 x 3/4
42	1708990A	1	SUPPORT, Steering
43	1708267D	1	SHROUD, Front (Red)
44	1935255	4	PAL NUT, 5/16-18

**Footnotes:**

# Front Column & Dash Group





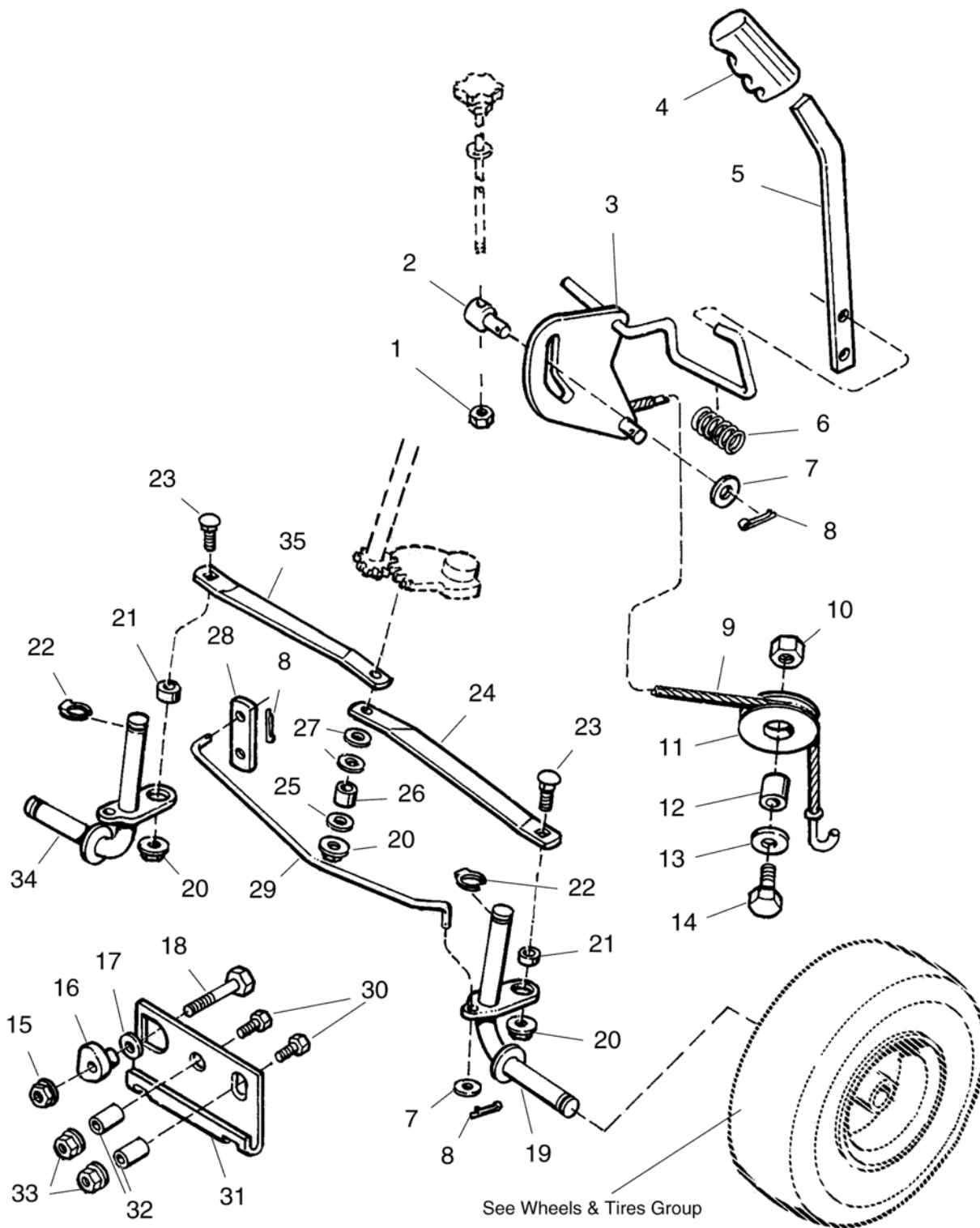
---

<b>Item</b>	<b>Part No</b>	<b>Qty</b>	<b>Description</b>
45	1708971	1	ROD, Lift Height
46	1917421	2	NUT, Hex, Jam 1/4-20
47	1713857	1	KNOB, Rod, Lift Height
48	1930641	2	NUT, Hex, Flange, Whizlock, 1/4-20
49	1714097	1	CAP, Steering Wheel

Not for  
Reproduction

**Footnotes:**

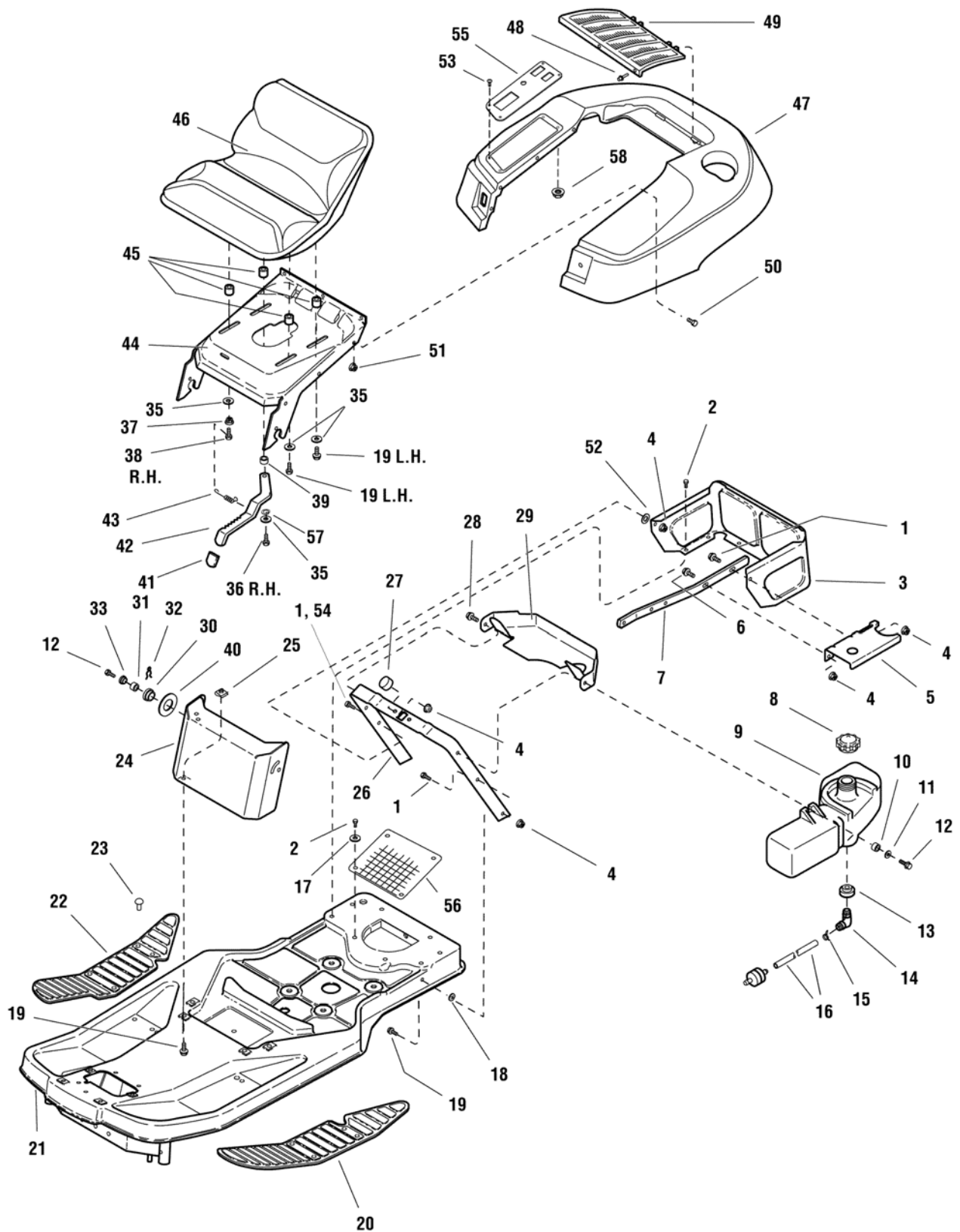
# Steering & Lift Group



Item	Part No	Qty	Description
1	1930651	1	NUT, Hex 3/8-16
2	2108512	1	PIVOT
3	1708955A	1	ARM ASSEMBLY, Lift
4	1708966	1	GRIP, Lever
5	1708557A	1	LEVER, Lift
6	1708884	1	SPRING, Compression
7	7090122	3	WASHER, Plain, 13/32 x 7/8 x 5/64 (Was 1924940)
8	1918447	3	COTTER PIN, 3/32 x 3/4
9	1708556	1	CABLE ASSEMBLY, Lift
10	1919439	1	NUT, Hex, Esna Lock, 3/8-16
11	1708559	1	PULLEY, Lift
12	1708973	1	SPACER
13	1924356	1	WASHER, Plain, 13/32 x 1-1/2 x 1/8
14	1921969	1	CAPSCREW, Hex Head, 3/8-16 x 1-1/2 GR5
15	1930645	1	NUT, Hex, Flange Lock, 3/8-16
16	1708514	1	ECCENTRIC
17	1922755	1	WASHER, 13/32 x 7/8 x 1/8
18	1921971	1	CAPSCREW, Hex Head, 3/8-16 x 1-3/4 GR5
19	1706011	1	SPINDLE ASSEMBLY, LH
20	1935048	3	NUT, Hex, Flange Lock, 5/16-18
21	1960236	2	SPACER
22	1704420	2	KLIP RING
23	1931335	2	CARRIAGE BOLT, 5/16-18 x 1 GR5
24	1708501A	1	TIE ROD, LH
25	1919381	1	WASHER
26	1710703	1	SPACER, 21/64 x 1/2 x 5/8
27	1960170	2	WASHER, .500 (0.51 ID X 1.00 OD X .10 THK) BLK (Was 7090705)
28	1708516A	1	LEVER
29	1708521	1	ROD, Hitch
30	1920328	2	CAPSCREW, Hex Head, 1/2-13 x 1-1/2 GR5
31	1709237A	1	HITCH, Hook
32	1709235	2	SPACER
33	1930644	2	NUT, Hex, Flange, 1/2-13
34	1706019	1	SPINDLE ASSEMBLY, RH
35	1708500A	1	TIE ROD, RH

## Footnotes:

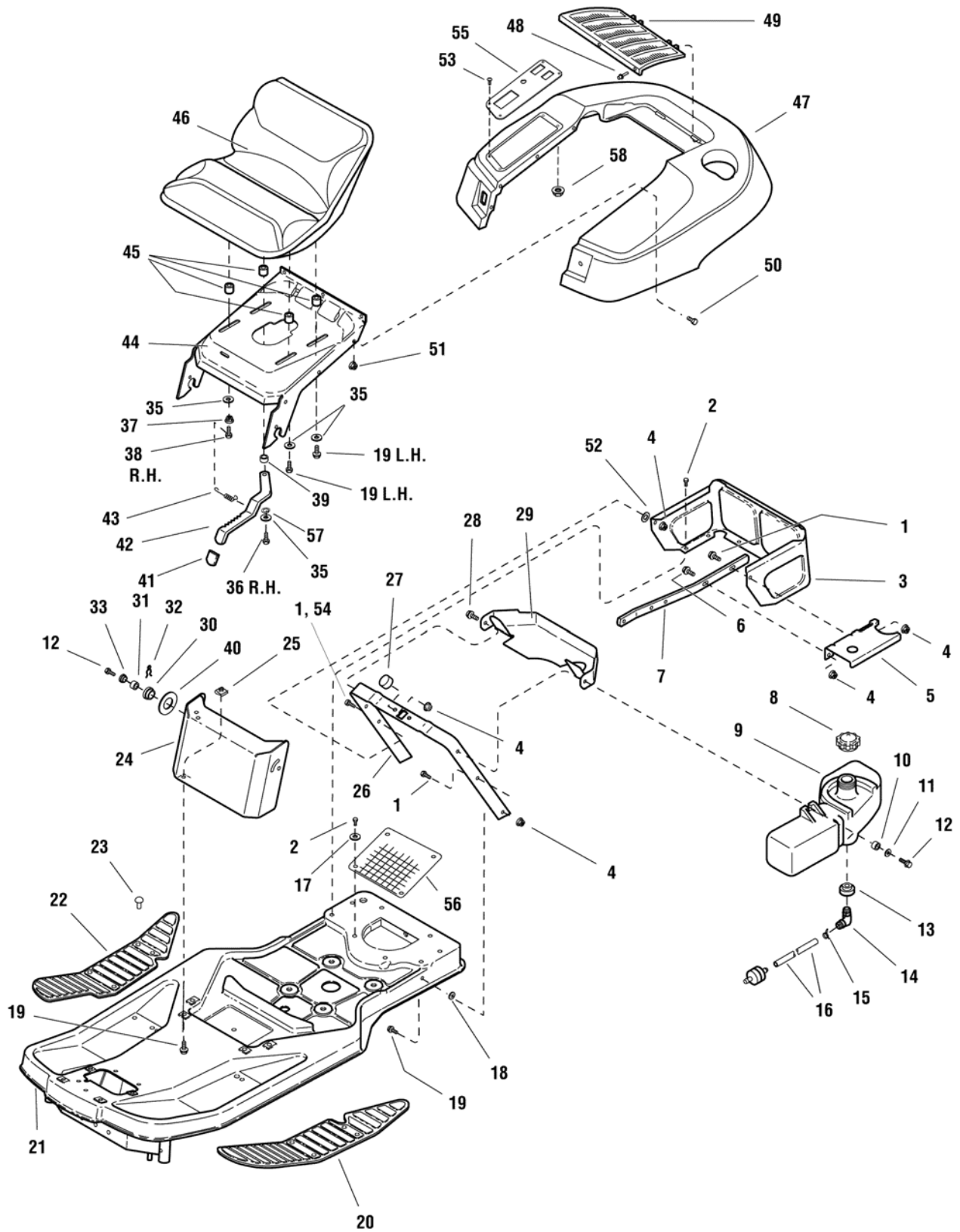
# Frame & Fuel System Group



<b>Item</b>	<b>Part No</b>	<b>Qty</b>	<b>Description</b>
1	1921333	2	CAPSCREW, Hex Head, 5/16-18 x 1
2	1925003	8	CAPSCREW, Hex Head, Taptite, 1/4-20 x 1/2
3	7301146A	1	SHROUD, Rear (Was 1715962A)
4	1931277	5	NUT, Hex, Flange, Whizlock, 5/16-18
5	1726558A	1	SUPPORT, Fuel Tank
6	1931333	1	CARRIAGE BOLT, 5/16-18 x 3/4
7	1708362A	1	STRAP, Fuel Tank, Brace
8	1714020	1	CAP, Fuel Tank, Vented
9	1726635	1	TANK, Fuel
10	1710437	1	SPACER, 21/64 x 1/2 x 21/64
11	7090122	1	WASHER, Plain, 13/32 x 7/8 x 5/64 (Was 1924940)
12	1960373	1	CAPSCREW, Hex, Taptite, 5/16-18 x 1 Black (13 HP Models)
13	1726400	1	BUSHING, Rubber
14	1674792	1	ELBOW, Fitting with Screen
15	2860112	2	CLAMP, Hose
16	1718678	1	HOSE, Fuel Line
17	1960044	2	WASHER, Plain
18	1933988	2	PUSH NUT, 5/16
19	1930591	10	CAPSCREW, Hex Head, Whizlock, 5/16-18 x 3/4
20	1708525	1	PAD, Foot Rest, LH
21	1727222A	1	FRAME ASSEMBLY
22	1708524	1	PAD, Foot Rest, RH
23	1704351	14	FASTENER
24	1727685A	1	PANEL, Front
25	1935255	4	PAL NUT, 5/16-18
26	1726563A	1	SUPPORT, U , Seat (13 HP Models)
27	1715970	2	BUMPER, Rubber
28	1924856	1	CAPSCREW, Hex Head, Taptite, 5/16 x 1/2
29	1708725A	1	DUCT, Air Inlet (13 HP Models)
30	1704626	2	SPACER, Plastic
31	1705249	2	SPACER
32	1704628	2	PIN, Quick
33	1705248	2	PIVOT, Hood
35	1917356	4	WASHER
36	7091540	1	CAPSCREW, Hex Head, 5/16-18 x 1-1/2 (Was 1921221)
37	1917372	1	NUT, Hex, 5/16-18
38	1921977	1	CAPSCREW, 5/16-18 x 1-1/4
39	1703900	1	SPACER
40	2860208	2	WASHER, 1
41	1708881	1	CAP, Black, Vinyl
42	1725532A	1	ADJUSTER, Seat

**Footnotes:**

**Frame & Fuel System Group**

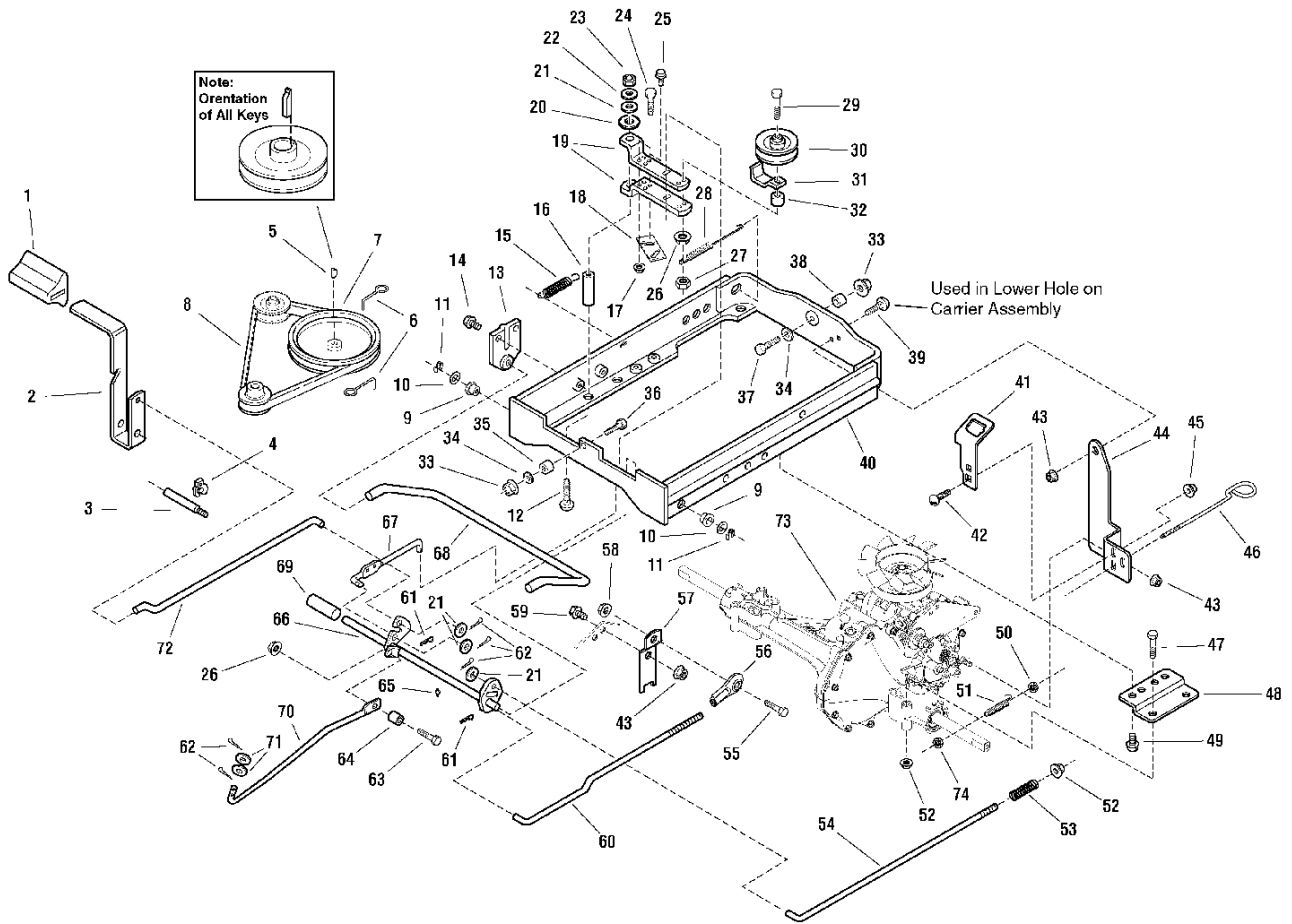


---

<b>Item</b>	<b>Part No</b>	<b>Qty</b>	<b>Description</b>
43	1667286	1	SPRING, Extension
44	1725531A	1	SUPPORT, Seat
45	1708511	4	SPACER
46	1725486	1	SEAT ASSEMBLY
47	1726649	1	DECK, Seat, Red
48	1673320	3	RIVET
49	1708504	1	SCREEN, Seat Deck Top
50	1960295	7	CAPSCREW, Hex Head, Whizlock, 1/4-20 x 5/8
51	1930642	7	NUT, Hex, Flange Lock, 1/4-20
52	1919381	1	WASHER, 5/16
53	1960715	4	SCREW, Truss Head, 1/4-20 x 3/4
55	1726836A	1	PLATE, Control
56	1724598	1	SCREEN
57	1919381	4	WASHER, 11/32 x 1 x 1/8
58	1920397	1	NUT, ESNA 1/4-20

Not for  
Reproduction

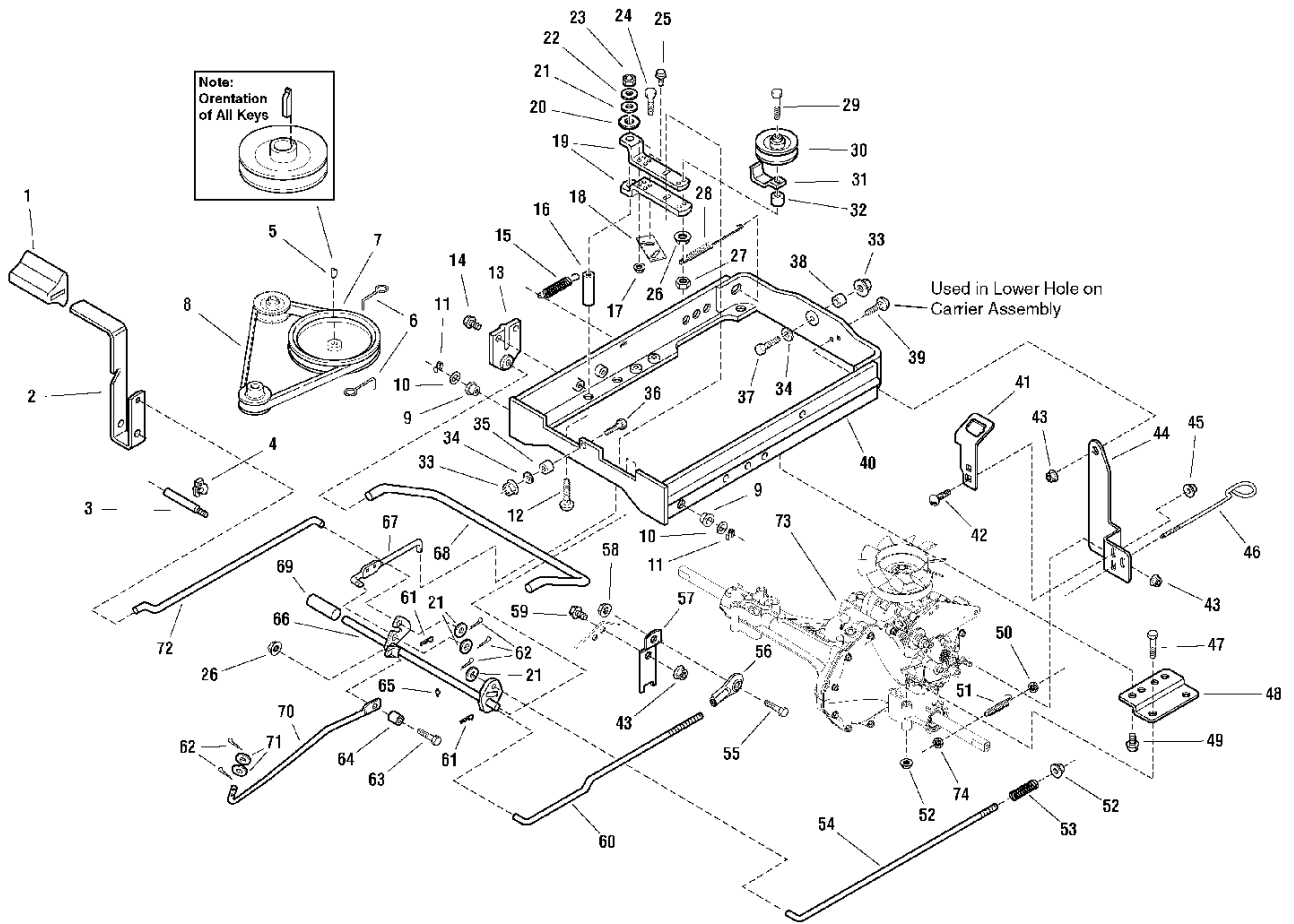
**Footnotes:**





<b>Item</b>	<b>Part No</b>	<b>Qty</b>	<b>Description</b>
1	1704849	1	PAD, Brake
2	1723348A	1	LEVER, Clutch
3	1708409	1	PIVOT, Brake
4	1708554	1	RING, Klipring Extension
5	2171241	1	KEY, Hi-Pro
6	1704419	2	STOP, Belt
7	1723497	1	PULLEY & HUB ASSEMBLY, Engine
8	1707346	1	V - BELT (4L 42.0 ET KEV)
9	1715025	2	BUSHING
10	1924361	2	WASHER, 1/2
11	1703805	1	RING, Klipring Extension
12	1931342	1	CARRIAGE BOLT, 5/16 - 18 x 2-1/4 G5
13	1708367	2	BRACKET, Torsion Bar
14	1924856	4	SCREW, Hex, Washer Head, Taptite, 5/16 - 18 x 1/2
15	2159106	1	SPRING, Extension
16	1709345	1	SPACER
17	1930641	1	NUT, Hex, Flange, 1/4 - 20, Whiz Lock LG
18	1725839A	1	PLATE, Idler 10GA
19	1709221	2	CLEVIS HALF
20	1924366	1	WASHER, 5/8
21	1919326	5	WASHER, 5/16
22	1917356	1	LOCKWASHER, Spring 5/16
23	1917372	1	NUT, Hex 5/16 - 18
24	1923341	1	CAPSCREW, Hex Head, 1/4 - 20 x 3/4 G5
25	1927429	1	SCREW, Hex, Washer Head, Taptite, 1/4 - 20 x 5/8
26	1928352	2	NUT, Hex Flange,, 3/8 - 16 Whiz Lock LG
27	1928731	1	NUT, Hex, Toplock, Jam, 3/8 - 16
28	1725250	1	SPRING, Extension
29	1922918	1	CAPSCREW, Hex Head, 3/8 - 16 x 3-1/4 G5
30	1668827	1	PULLEY
31	1708352A	1	GUARD, Spring
32	1725838	1	SPACER
33	1930644	1	NUT, Hex Flange, 1/2 - 13, Two-Way Lock
34	1924361	1	WASHER, 1/2
35	1719683	1	SPACER
36	1921176	1	CAPSCREW, Hex Head, 1/2 - 20 x 1-1/4 G5
37	1923114	1	CAPSCREW, Hex Head, 1/2 - 13 x 1 G5
38	1719725	1	SPACER
39	1931332	1	CARRIAGE BOLT, 5/16 - 18 x 5/8 G5
40	1726591A	1	CARRIER ASSEMBLY
41	1726554A	1	BRACKET, Switch Mounting (No-Mow Models Only)
42	1931317	2	CARRIAGE BOLT, 1/4 - 20 x 3/4 G5 (No-Mow Models Only) (was 1960252)
43	1931277	3	NUT, Hex Flange, 5/16 - 18, Whiz Lock Small
44	1726555A	1	STRAP, Torque (No-Mow Models Only)

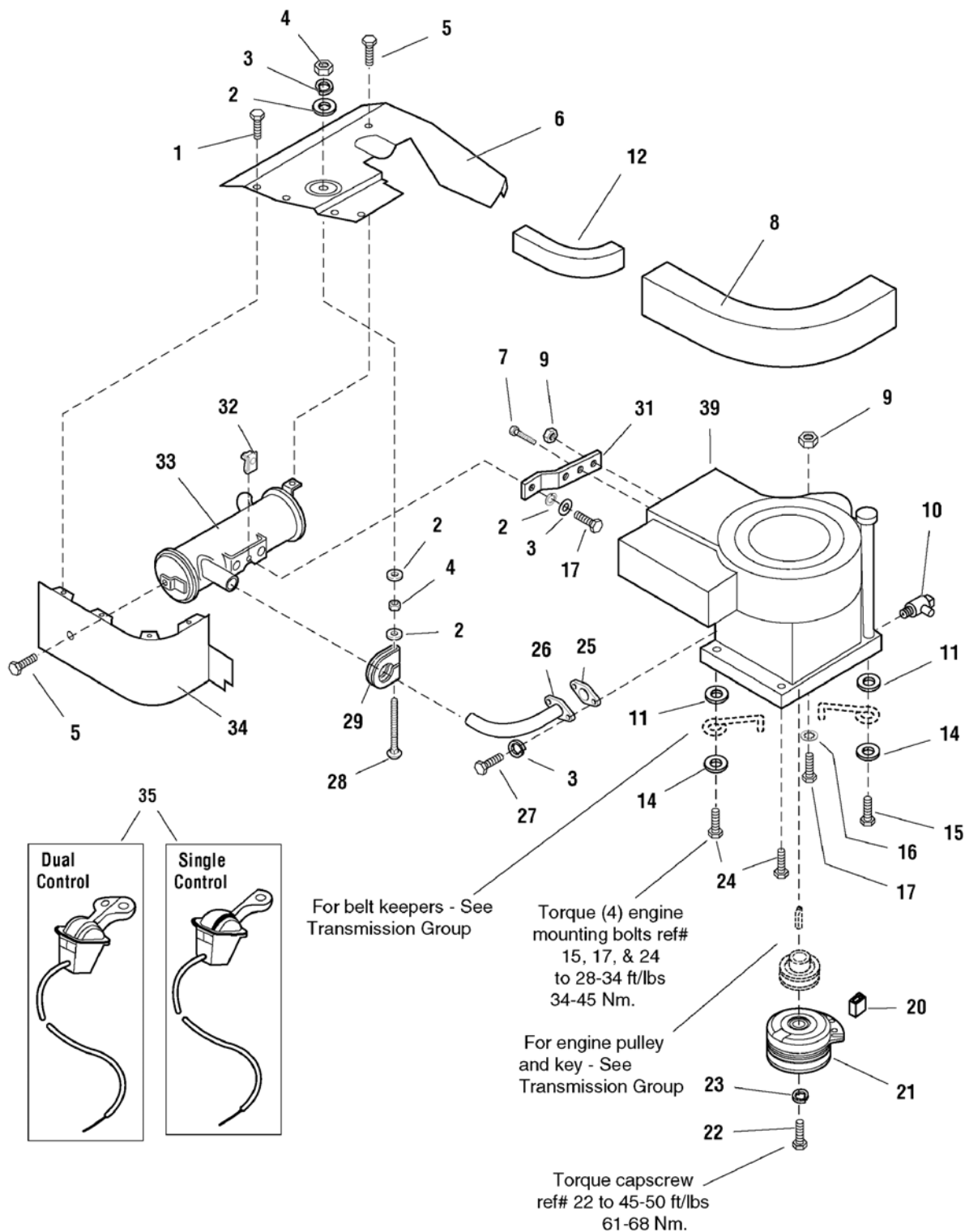
**Footnotes:**



<b>Item</b>	<b>Part No</b>	<b>Qty</b>	<b>Description</b>
44	1726555A	1	STRAP, Torque
45	1960694	2	NUT, Hex Flange, 1/4 - 20 ESNA (No-Mow Models Only)
46	1725183	1	ROD
47	1921719	4	CAPSCREW, Hex Head, 5/16 - 18 x 2-1/2 G5
48	1725706A	2	BRACKET, Mounting
49	1664847	4	SCREW, Hex, Washer Head, Taptite, 5/16 - 18 x 3/4
50	7091267	1	NUT, Hex Lock #10F BZ (was 1916621)
51	1726327	1	SPRING, Extension
52	1935048	5	NUT, Hex Flange, 5/16 - 18, Two-Way Lock
53	1708360	1	SPRING
54	1725166	1	ROD, Brake
55	1921210	1	CAPSCREW, Hex Head, 3/8 - 16 x 1 G5
56	1726559	1	ROD, End
57	1725736A	1	LEVER, Control
58	1930645	1	NUT, Hex Flange, 3/8 - 16, Two-Way Lock
59	1925205	1	CAPSCREW, Hex Head, 5/16 - 18 x 5/8 G5
60	1725167	1	ROD, Control
61	1722460	2	PIN, Quick
62	1918447	6	PIN, Cotter
63	2860709	1	SCREW, Hex, Whiz Lock, Flange, 3/8 - 16 x 1-3/4
64	1666804	1	SPACER
65	2821133	1	FITTING, Lube, 1/4 Drive
66	1725768A	1	SHAFT & ARMS ASSEMBLY, Pivot
67	1709220	1	CLUTCH, Rear
68	1708366	1	BAR, Torsion
69	1709850	1	TUBE
70	1725767	1	ROD, Shift, Front
71	1924359	2	WASHER, 1/2
72	1706260	1	ROD, Clutch, Front
73	1725620	1	TRANSMISSION ASSEMBLY, Hydro Gear
74	1916621	1	NUT, Hex #10-24 NC-2B

**Footnotes:**

# Engine & Electric Clutch Group - 13HP Briggs & Stratton Models



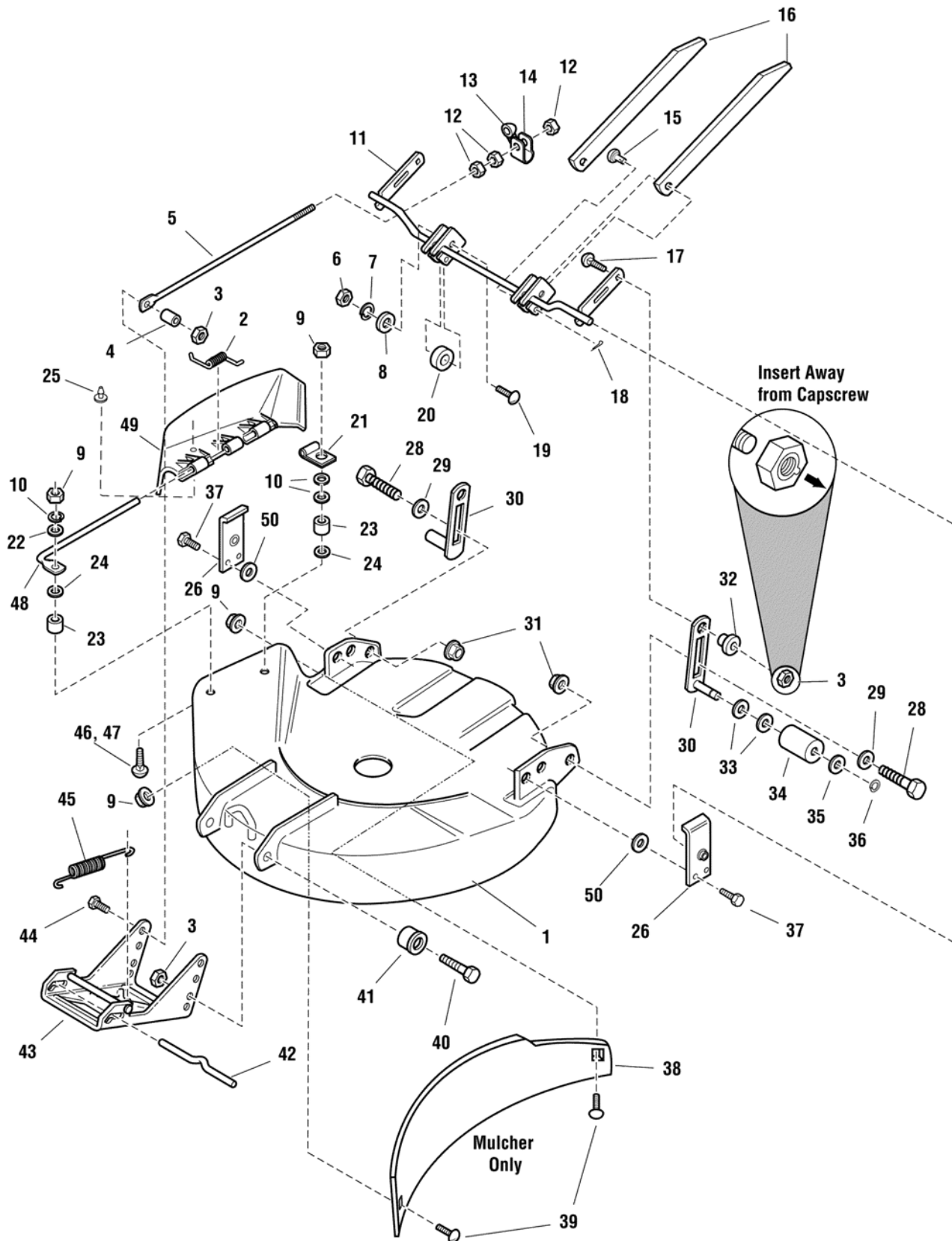
## **Engine & Electric Clutch Group - 13HP Briggs & Stratton Models**

<b>Item</b>	<b>Part No</b>	<b>Qty</b>	<b>Description</b>
1	1960720	5	SCREW, Thread Forming, #10-16 x 1/2
2	1919326	4	WASHER, .34
3	1917356	4	LOCKWASHER, 5/16
4	1917372	2	NUT, Hex, 5/16-18
5	1924856	2	CAPSCREW, Hex Head, Taptite, 5/16-18 x 1/2
6	1724428A	1	DUCT, R.H., Top
7	1960568	2	SCREW, Taptite, 1/4-20 x .88
8	1709055	1	SEAL, Air Inlet
9	1931277	1	NUT, Flange, Whizlock, 5/16-18
10	1708405	1	VALVE, Shut-Off
11	2833263	2	WASHER, Plain
12	1718648	1	EDGING, Seal
14	1922755	2	WASHER, 3/8
15	2860361	1	CAPSCREW, Taptite, 3/8-16 x 2
16	1933988	1	PUSH NUT, 5/16-18
17	1933689	1	CAPSCREW, Hex, Whizlock, Flange, 5/16-18 x 1-1/2
20	1708537	1	SLEEVE, Clutch Anchor
21	1686882	1	CLUTCH, Electric, Kit
22	1960370	1	CAPSCREW, Hex Head, 7/16-20 x 2-1/2
23	1918199	1	LOCKWASHER, 7/16
24	1930598	2	CAPSCREW, Taptite, 3/8-16 x 1-1/2
25	1650670	1	GASKET, Muffler
26	1724466	1	PIPE, Exhaust
27	1936228	2	CAPSCREW, Socket Head, 5/16-18 x 3/4
28	1960748	1	CARRIAGE BOLT, 5/16-18 x 3-1/4
29	1676183	1	CLAMP, Muffler
31	1724428A	1	SUPPORT, Muffler
32	1935255	1	SPEED NUT, 5/16-18
33	1708416	1	MUFFLER ASSEMBLY
34	1724427A	1	DUCT, Bottom
35	1734506	1	THROTTLE CONTROL, Dual (Export Only)
35	1722955	1	THROTTLE CONTROL, Single
39	21A907-0131-E1	1	* ENGINE, Briggs & Stratton, 13HP, Mod. 21A907-0131-E1

### **Footnotes:**

Note\* See your local Briggs & Stratton distributor for parts

# 30" Mower Deck - Housing & Height Adjustment

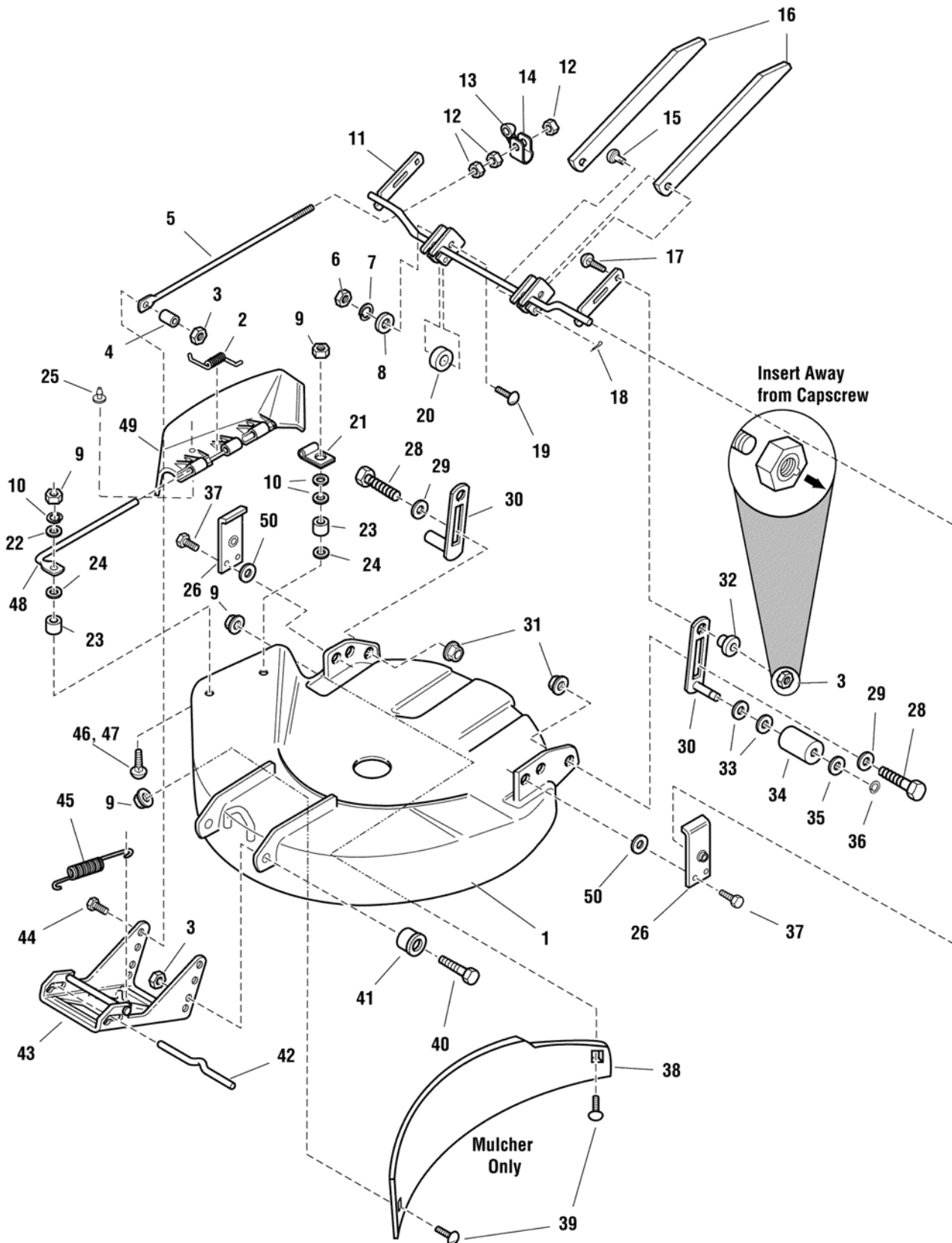


## 30" Mower Deck - Housing & Height Adjustment

Item	Part No	Qty	Description
1	1687157	1	HOUSING ASSEMBLY, 30 (Red)
2	7101082	1	SPRING, Torsion
3	2860681	5	NUT, Hex, ALUM Lock, 3/8
4	1611705	1	SPACER
5	1707300	1	ROD, Adjustment
6	1927557	2	NUT, Hex Flange Whiz Lock, 5/16-18
7	1917356	1	LOCKWASHER, 5/16 (Domestic Only)
8	1919326	2	WASHER
9	1920397	4	NUT, Hex ESNA, 1/4-20
10	1921319	3	WASHER, Plain 1/4 Black (Min 1 Required for Export)
11	1707540A	1	ARM ASSEMBLY, Mower
12	1913744	3	JAMNUT, Hex, 3/8-16
13	1671260	1	SPACER
14	1707280A	1	TRUNNION
15	1655651	2	PIN, Locking
16	1709209A	2	BAR, Mower Transport
17	1931352	2	CARRIAGE BOLT, 3/8-16 x 1-1/2
18	1960074	2	PIN, Retaining
19	1960223	2	CARRIAGE BOLT, 5/15-18 x 1-1/4
20	1704716	2	SPACER
21	1704873	1	CLAMP
22	1921319	3	WASHER, Plain (1 Required for Export)
23	1700692	2	SPACER (Export)
24	1960518	2	PUSHNUT, 1/4
25	1718611	1	PLUG, Hole
26	1708250A	2	PLATE, Pivot Support
28	2172622	2	BOLT, Shoulder
29	7091587	2	WASHER, Flat (Was 1924361)
30	1708519A	2	SUPPORT ASSEMBLY, Roller
31	1928352	2	NUT, Hex, Flange, Whizlock, 3/8-16
32	1704082	2	NUT, Adjustment
33	1924366	4	WASHER, Plain, 21/32 x 1-1/8 x 7/64
34	1668487	2	ROLLER
35	1960020	2	WASHER, 21/32 x 1-1/8 x 1/16
36	2153124	2	RING, Retaining
37	7091541	4	CAPSCREW, Taptite, 5/16-18 x 3/4 (Was 1664847)
38	1709282A	1	PLATE, Discharge (30 Mulcher)
39	1931333	2	CARRIAGE BOLT, 5/16-18 x 3/4, G5
40	1921968	2	CAPSCREW, Hex, 3/8-16 x 1 3/8
41	1732443	1	SPACER
42	1715759	1	ROD, Latch, Hitch
43	1707432A	1	HITCH ASSEMBLY
44	7091304	1	CAPSCREW, Hex Head, 3/8-16 x 1 (Was 1921210)
45	2156302	1	SPRING

### Footnotes:

# 30" Mower Deck - Housing & Height Adjustment





## 30" Mower Deck - Housing & Height Adjustment

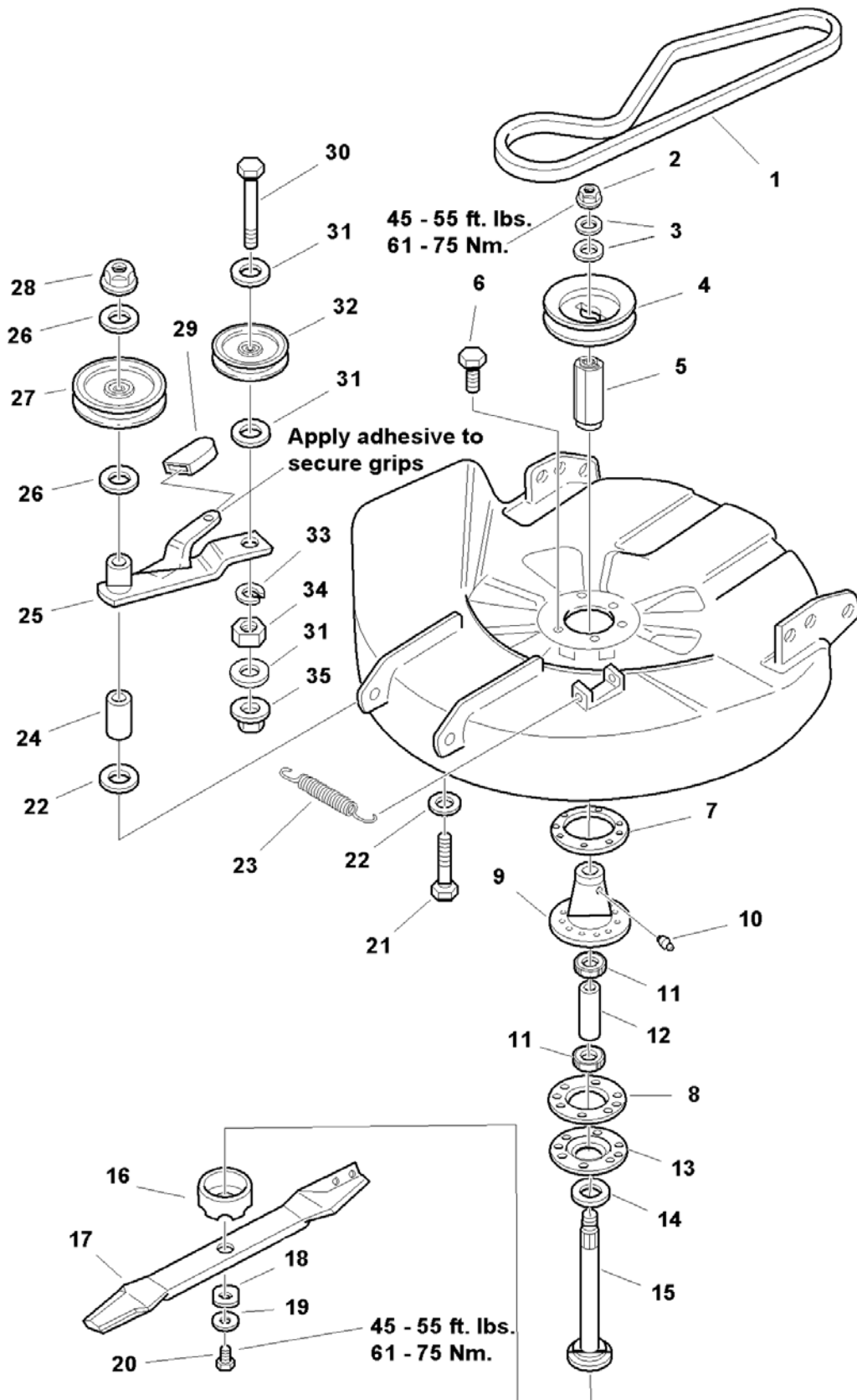
---

<b>Item</b>	<b>Part No</b>	<b>Qty</b>	<b>Description</b>
46	1931317	2	CARRIAGE BOLT, 1/4-20 x 3/4
47	1931320	2	CARRIAGE BOLT, 1/4-20 x 1-1/4 (Export)
48	1664947	1	ROD, Deflector
49	1705449	1	DEFLECTOR, Plastic
50	7090122	2	WASHER, Flat 3/8 (Domestic Only) (Was 1924940)

Not for  
Reproduction

Footnotes:

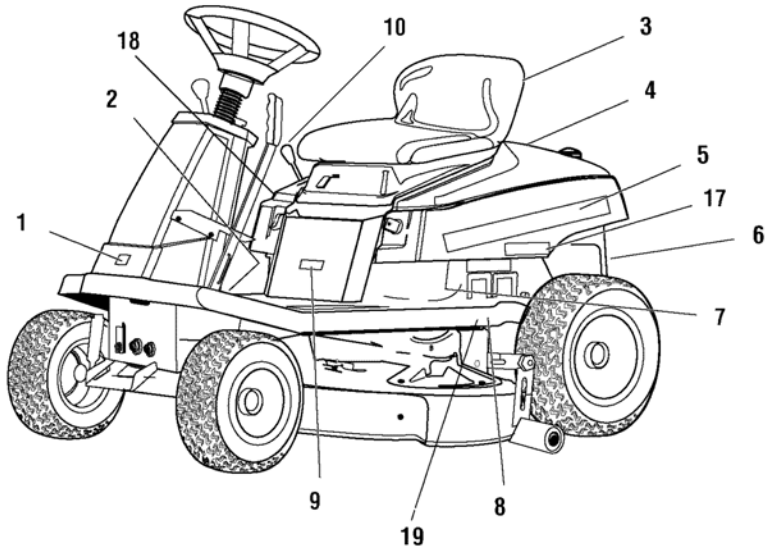
**30" Mower Deck - Drive & Arbor**



<b>Item</b>	<b>Part No</b>	<b>Qty</b>	<b>Description</b>
1	1719746	1	V-BELT (HA 73.24 Aramid)
2	1714419	1	NUT, Hex Flange, 9/16-18
3	1713675	2	WASHER, Belleville
4	1713092	1	PULLEY
5	1713613	1	HUB, Pulley, 1-3/16
6	1960373	6	CAPSCREW, Hex Head, Taptite, 5/16-18 x 1
7	1677274A	1	ADAPTER, Arbor
8	1707335	1	GASKET, Foam
9	1713338A	1	HOUSING ASSEMBLY, Arbor Bottom, w/Lube Fitting
10	1704314	1	FITTING, Grease
11	1705897	2	BEARING
12	1732543	1	SPACER
13	1713199A	1	COVER, Arbor Housing
14	1713619	1	WASHER, Cupped
15	1713609	1	SHAFT, Arbor, 5-53/64
16	1713196	1	SHIELD, Grass, Lower
17	1664019A	1	BLADE, Mower, 30
18	1713089	1	WASHER, Hex
19	1656916	1	WASHER, Spring
20	2823471	1	CAPSCREW, Hex Head, 7/16-14 x 1, GR 8
21	1923903	1	CAPSCREW, Hex Head, 3/8-16 x 3
22	1924356	2	WASHER, Flat, 3/8 x 1-1/2 x 1/8
23	1715435	1	SPRING
24	1669105	1	SPACER
25	1708562	1	LEVER ASSEMBLY
26	7090122	2	WASHER, Plain, 3/8 (Was 1924940)
27	1707435	1	PULLEY ASSEMBLY Idler, Fixed, 6 Dia.
28	1928352	1	NUT, Hex, Whizlock, 3/8-16
29	1665835	1	GRIP, Lever
30	1923701	1	CAPSCREW, Hex Head, 3/8-16 x 2
31	1922755	3	WASHER, 13/32 x 1 x 1/8
32	1704926	1	IDLER PULLEY, Backside
33	3031008	1	LOCKWASHER, 3/8 (Was 1916965)
34	3031009	1	NUT, Hex, 3/8 (Was 1916950)
35	1928731	1	NUT, Hex, Lock, 3/8-16

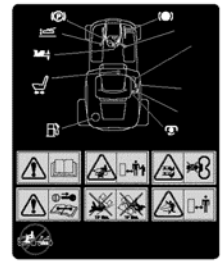
**Footnotes:**

(Includes Ref. No. 10)



NORTH AMERICAN MODELS

CE MODELS



2

2



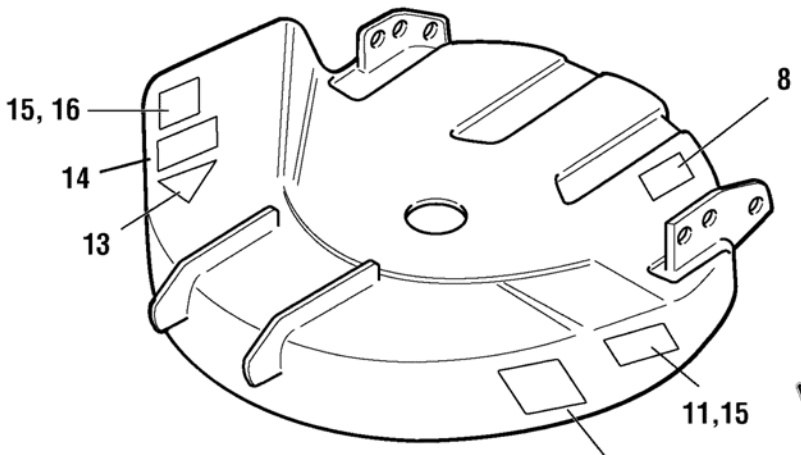
6



18



8



5 — **SNAPPER**

17 — RT1330

13hp



9

13



12



15

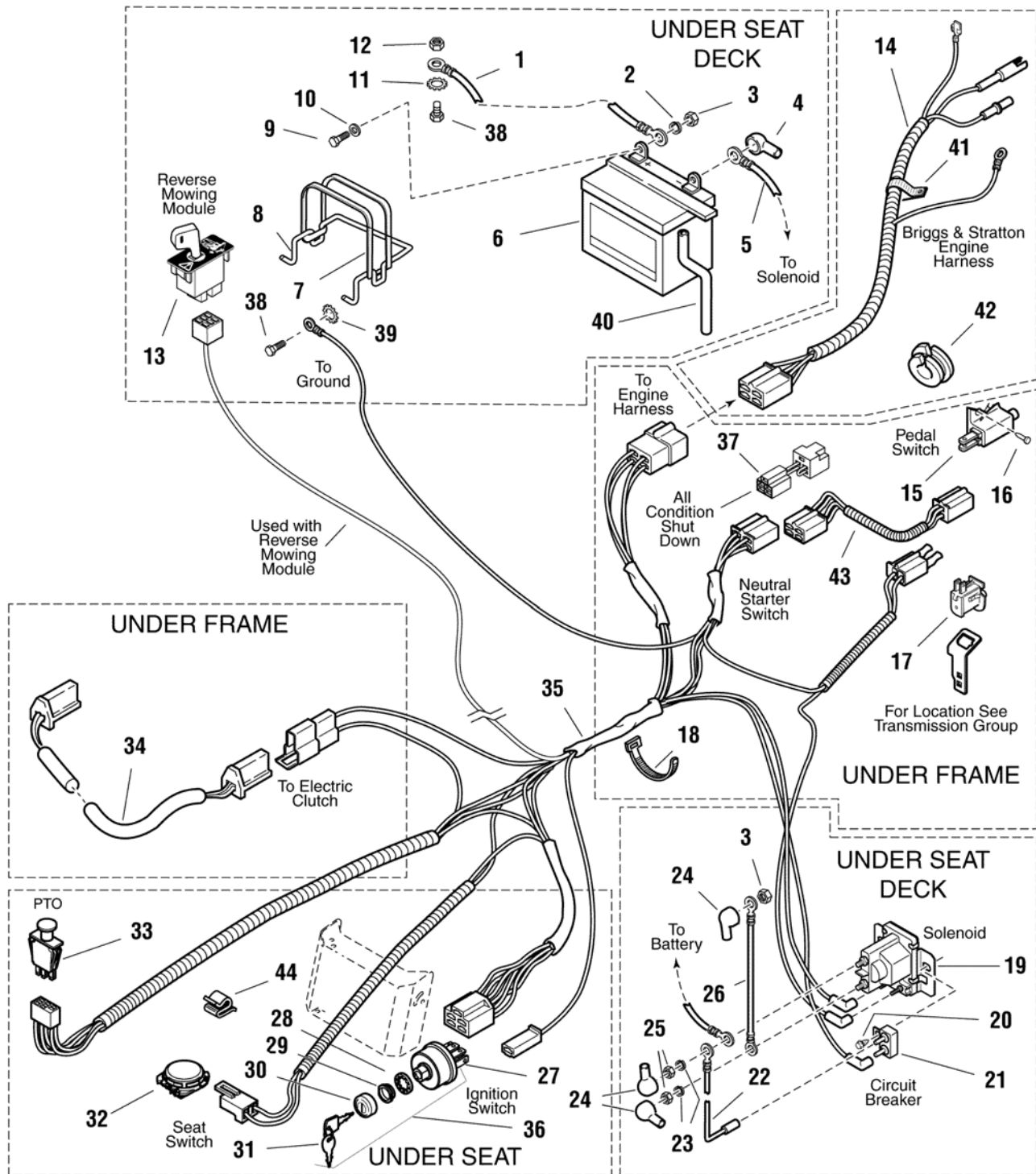


16

Item	Part No	Qty	Description
1	--	1	* DECAL, C E, (Export Only)
2	1726347	1	DECAL, Operating Instruction, English
2	1726336	1	NLA - DECAL, Operating Instruction (CE/Export Only)
2	1726957	1	DECAL, Operating Instructions, Export
3	1708927	1	DECAL, USA (Seat Back) (CE/Export Only)
4	1726335	1	DECAL, Belt & Blade Replacement
5	7073905	2	DECAL, Snapper Logo
6	1726341	1	DECAL, Transmission Release (Hydro models only)
7	1725072	1	DECAL, Touch-up Pain, Red & Gray
8	--	1	* I.D. PLATE (Not Serviced)
9	1722778	1	DECAL, 13 HP
10	1714435	1	DECAL, Throttle / Choke
10	1719183	1	DECAL, Throttle
11	1722771	1	DECAL, Free Floating Mower
12	1704276	1	DECAL, Danger, Rotating Cutting Blade
13	--	1	* DECAL, OPEI, (Not Serviced)
14	1722785	1	DECAL, Cutting Width - 30 , Silver on Black
15	1720389	2	DECAL, Danger, Rotating Blades (CE/Export Only)
16	1704277	1	DECAL, Danger, Chute In Place
17	1726337	2	DECAL, Model RT1330
18	1722806	1	DECAL, Ignition Switch
19	--	1	* DECAL, Decibel, Power Mass (CE/Export Only)

**Footnotes:**

Note\* Not a servicable part.



<b>Item</b>	<b>Part No</b>	<b>Qty</b>	<b>Description</b>
1	1713163	1	CABLE, Battery to Ground
2	2816964	2	WASHER, Lock, 1/4
3	2816622	3	NUT, Hex 1/4-20
4	1677296	1	BOOT, Insulator
5	1713163	1	CABLE, Battery to Solenoid (Briggs & Stratton Models)
6	1685215	1	BATTERY
7	1665872	1	STRAP, Battery
8	1667805	1	BRACE, Battery
9	2823341	2	CAPSCREW, Hex Head, 1/4-20 x 3/4
10	2821319	2	WASHER
11	2820427	1	WASHER, Lock, External Tooth, 3/8
12	2816950	1	NUT, Hex, 3/8-16
13	1726556	1	SWITCH, RMO Module Only (1726557 Plastic Key not included)
--	1726557	1	KEY, RMO Module Plastic (not shown)
14	1718948	1	WIRE ASSEMBLY, Harness to Engine (Briggs & Stratton Only)
15	1717050	1	SWITCH, Neutral Start
16	1722035	2	POP-RIVET
17	1732004	1	SWITCH, Push Button (N.O.)
18	2825094	2	TIE, Self-Locking
19	1686981	1	SOLENOID (Was 1724815)
20	1925003	2	CAPSCREW, Hex Head, Taptite, 1/4-20 x 1/2
21	1665238	1	CIRCUIT BREAKER
22	1665237	1	WIRE ASSEMBLY
23	2820426	1	LOCKWASHER, 5/16 Yellow
24	2122023	3	COVER, Terminal
25	2820263	2	NUT, Hex, 5/16-24
26	1709088	1	CABLE, Solenoid to Starter
27		1	** SWITCH, Ignition (6 pole)
28	1960547	1	WASHER, Internal Tooth, 5/8
29	1717549	1	NUT
30	1717550	1	COVER, Keyswitch
31	1717163	1	KEYS (Set of 2 Keys)
32	1714771	1	SWITCH, Seat
33	1722887	1	* SWITCH, PTO, Electric Clutch
34	1726667	1	WIRE HARNESS, Clutch
35	1718946	1	HARNESS, Wiring (No Reverse Mowing Option)
35	1726654	1	HARNESS, Wiring (With Reverse Mowing Option)
36	1686734	1	IGNITION KEY SWITCH ASSEMBLY
37	1734025	1	WIRING ASSEMBLY, All Conditions Shutdown (CE/Export)
38	2823341	2	CAPSCREW, Hex head 1/4-20 x 3/4
39	7090395	1	WASHER, Lock, External Tooth, 5/16 (Was 920426)
40	1612103	1	TUBE, Vent (Early Models Only)

**Footnotes:**

Note\* If connection blades do not line up use 1686620 Switch

Note\*\* See reference number 41. Sold as assembly.









# Hardware Identification & Torque Specifications

Torque Specification Chart								
FOR STANDARD METRIC MACHINE HARDWARE (Tolerance ± 20%)								
Property Class	5.6		8.8		10.9		12.9	
	Class 5.6		Class 8.8		Class 10.9		Class 12.9	
Size Of Hardware	in/lbs		in/lbs		in/lbs		in/lbs	
	ft/lbs	Nm.	ft/lbs	Nm.	ft/lbs	Nm.	ft/lbs	Nm.
M3	5.88	.56	13.44	1.28	19.2	1.80	22.92	2.15
M4	13.44	1.28	30.72	2.90	43.44	4.10	52.56	4.95
M5	26.4	2.50	60.96	5.75	5.97	8.10	7.15	9.7
M6	44.64	4.3	7.3	9.9	10.3	14	12.1	16.5
M7	5.2	7.1	12.1	16.5	16.9	23	19.9	27
M8	7.7	10.5	17.7	24	25	34	29	40
M10	15	21	35	48	50	67	59	81
M12	26	36	61	83	86.2	117	103	140
M14	42	58	101	132	136	185	162	220
M16	64	88	147	200	210	285	250	340
M18	89	121	202	275	287	390	346	470
M20	126	171	290	390	405	550	486	660
M22	169	230	390	530	559	745	656	890
M24	217	295	497	375	708	960	840	1140
M27	320	435	733	995	1032	1400	1239	1680
M30	435	590	995	1350	1401	1900	1681	2280
M33	590	800	1349	1830	1902	2580	2278	3090
M36	759	1030	1740	2360	2441	3310	2935	3980
M39	988	1340	2249	3050	3163	4290	3798	5150

Torque Specification Chart						
FOR STANDARD MACHINE HARDWARE (Tolerance ± 20%)						
Hardware Grade	No Marks		SAE Grade 5		SAE Grade 8	
	SAE Grade 2		SAE Grade 5		SAE Grade 8	
Size Of Hardware	in/lbs		in/lbs		in/lbs	
	ft/lbs	Nm.	ft/lbs	Nm.	ft/lbs	Nm.
8-32	19	2.1	30	3.4	41	4.6
8-36	20	2.3	31	3.5	43	4.9
10-24	27	3.1	43	4.9	60	6.8
10-32	31	3.5	49	5.5	68	7.7
1/4-20	66	7.6	8	10.9	12	16.3
1/4-28	76	8.6	10	13.6	14	19.0
5/16-18	11	15.0	17	23.1	25	34.0
5/16-24	12	16.3	19	25.8	29	34.0
3/8-16	20	27.2	30	40.8	45	61.2
3/8-24	23	31.3	35	47.6	50	68.0
7/16-14	30	40.8	50	68.0	70	95.2
7/16-20	35	47.6	55	74.8	80	108.8
1/2-13	50	68.0	75	102.0	110	149.6
1/2-20	55	74.8	90	122.4	120	163.2
9/16-12	65	88.4	110	149.6	150	204.0
9/16-18	75	102.0	120	163.2	170	231.2
5/8-11	90	122.4	150	204.0	220	299.2
5/8-18	100	136	180	244.8	240	326.4
3/4-10	160	217.6	260	353.6	386	525.0
3/4-16	180	244.8	300	408.0	420	571.2
7/8-9	140	190.4	400	544.0	600	816.0
7/8-14	155	210.8	440	598.4	660	897.6
1-8	220	299.2	580	788.8	900	1,244.0
1-12	240	326.4	640	870.4	1,000	1,360.0

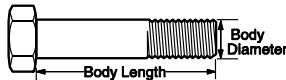
The guides and ruler furnished below are designed to help you select the appropriate hardware.



Nut, M8

Thread Diameter (mm)  
Inside Diameter (in)    Threads per inch

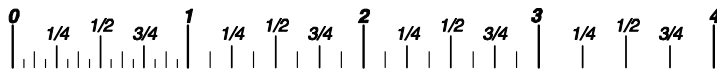
Nut, 1/2-16



Screw, M8- 1.25 x 25

Thread Diameter (mm)    Distance between threads (mm)    Body Length (mm)  
Body Diameter    Threads per inch    Body Length (in)

Screw, 1/2- 16 x 2



## Standard Hardware Sizing

When a washer or nut is identified as 1/2" (M8), this is the *Nominal size*, meaning the *inside diameter* is 1/2 inch (8mm metric thread diameter); if a second number is present it represents the *threads per inch* (distance between threads).

When bolt or capscrew is identified as 1/2 - 16 x 2" (M8 - 1.25 x 50), this means the *Nominal size*, or body diameter is 1/2 inch (8mm metric thread diameter), the second number, 16, represents the *threads per inch*, (1.25 thread diameter). The final number is the body length of the bolt or screw, 2 inches (50mm).

## NOTES

- These torque values are to be used for all hardware excluding: locknuts, self-tapping screws, thread forming screws, sheet metal screws and socket head setscrews.
- Recommended seating torque values for locknuts:
  - for prevailing torque locknuts - use 65% of grade 5 torques.
  - for flange whizlock nuts and screws - use 135% of grade 5 torques.
- Unless otherwise noted on assembly drawings, all torque values must meet this specification.

## Common Hardware Types

Hex Head Capscrew



Washer



Carriage Bolt



Lockwasher



Hex Nut



## Wrench & Fastener Size Guide

1/4" Bolt or Nut Wrench—7/16"	5/16" Bolt or Nut Wrench—1/2"	3/8" Bolt or Nut Wrench—9/16"	7/16" Bolt or Nut Wrench (Bolt)—5/8" Wrench (Nut)—11/16"	1/2" Bolt or Nut Wrench—3/4"
M6 Bolt or Nut Wrench—10mm	M8 Bolt or Nut Wrench—13mm	M10 Bolt or Nut Wrench—17mm	M12 Bolt or Nut Wrench—19mm	M14 Bolt or Nut Wrench—22mm

**Parts Manual for**

# **SNAPPER®**

## **REAR ENGINE RIDER HYDRO DRIVE RT RMO ACS SERIES 0**

Not for  
Reproduction

IT IS THE POLICY OF BRIGGS & STRATTON CORP TO IMPROVE ITS PRODUCTS WHENEVER IT IS POSSIBLE AND PRACTICAL TO DO SO. WE RESERVE THE RIGHT TO MAKE CHANGES OR ADD IMPROVEMENTS AT ANY TIME WITHOUT INCURRING ANY OBLIGATION TO MAKE SUCH CHANGES ON PRODUCTS

**Briggs & Stratton Yard Power Products Group**

535 Macon Road  
McDonough, GA, 30253 U.S.A.  
800-935-2967

[www.snapper.com](http://www.snapper.com)

Copyright © 2011 Briggs & Stratton Corporation  
Milwaukee, WI USA. All Rights Reserved

**Manual No. 7006468  
Revision: D 8/30/2011**