



# Parts Manual

Mfg. No: 2691022-01  
SPX2352, 52" 23 HP SPX Lawn Tractor



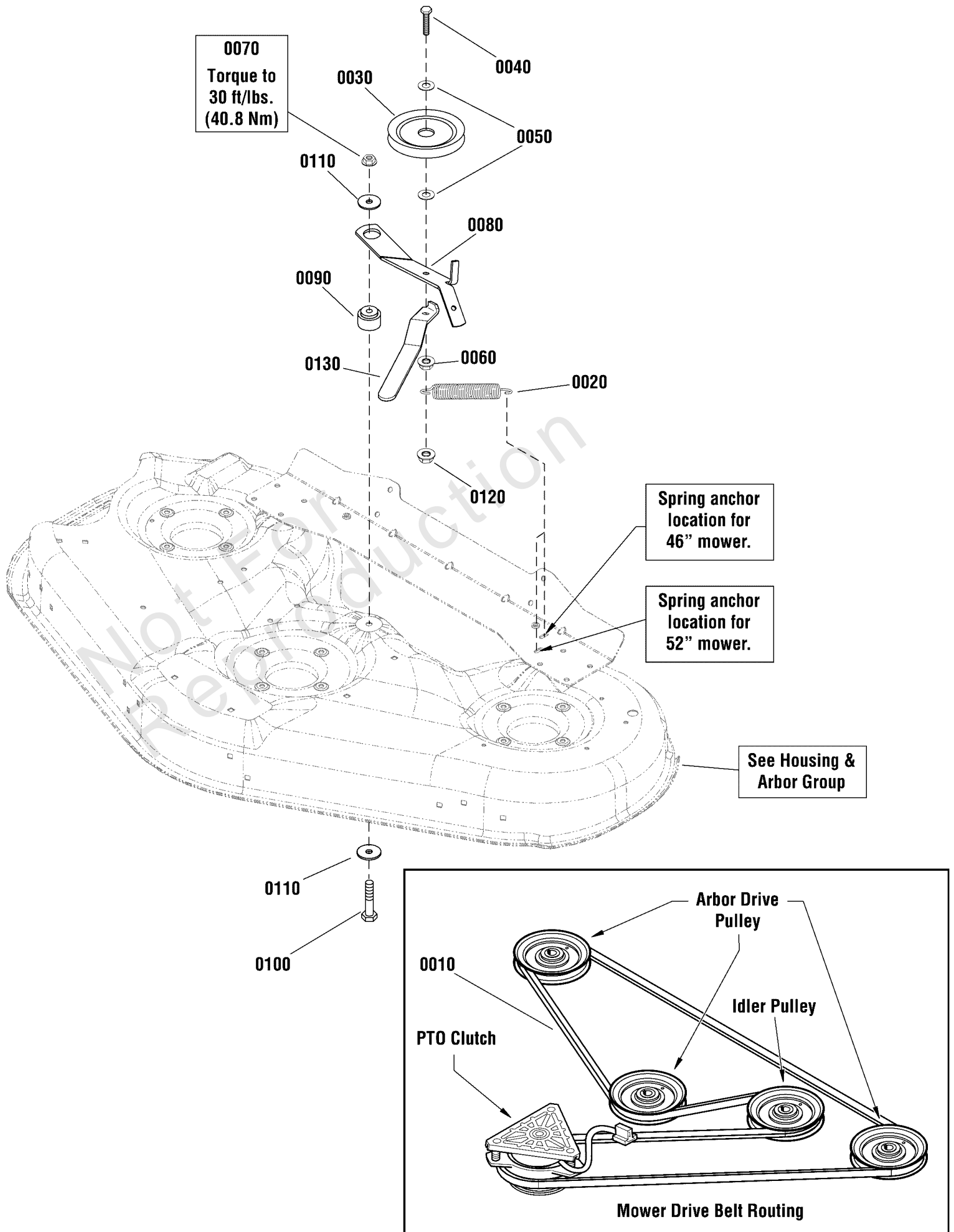
<b>Model Components</b>	<b>Page</b>
46" & 52" Mower Deck - Clutch Group.....	4
46" & 52" Mower Deck - Height Adjustment Group.....	6
46" & 52" Mower Deck - Housing, Arbor & Blades Group.....	8
Controls Group.....	10
Decals Group - 42", 46" & 52" Deck.....	12
Electrical Group.....	14
Engine Group - 20, 22 & 23HP Briggs & Stratton EFM Twin Professional Series.....	18
Frame & Front Axle Group.....	20
Hood, Grille & Dash Group.....	22
Lift Group - Manual.....	24
Seat Deck & Fuel Tank Group.....	26
Steering Group.....	28
Transmission Group - Hydro Gear T2-CCHE-4X3B-1LX1.....	30
Transmission SERVICE PARTS - Hydro-Gear T2-CCHE-4X3B-1LX1.....	32
Wheels & Tires Group.....	36
Torque Specification Chart.....	38

Not For  
Reproduction

# 46" & 52" Mower Deck - Clutch Group

Note: Unless noted otherwise, use the standard torque specifications

Mfg. No: 2691022-01



## 46" & 52" Mower Deck - Clutch Group

REF NO	PART NO	QTY	DESCRIPTION
0010	1736516	1	V-BELT, HA, 132" -(52" Models Only)
0010	1719911SM	1	V-BELT, HA, A-Wedge, 117" -(46" Ground Following Deck Models Only)
0010	1719911	1	V-BELT, HA, 117" -(46" Frame Hung Deck Models Only)
0020	1715772	1	SPRING, Extension, 1 OD x 5-1/4" Long
0030	1736540	1	PULLEY, Idler
0040	1933685	1	CAPSCREW, Hex Head, 3/8-16 x 2-1/2, G5
0050	1922755SM	2	WASHER, 3/8 x 1 OD
0060	703333	1	NUT, Hex Flange Whiz Lock, 3/8-16
0070	1960339	1	NUT, Hex Flange, 3/8-16
0080	1736551A	1	ARM, Idler
0090	1729007	1	SPACER, 3/8 ID X 1-1/2 OD x 1-1/32
0100	703589	1	CAPSCREW, Hex Head, 3/8-16 x 2, G5
0110	703591	2	WASHER, 3/8 x 1-1/2 OD
0130	1755653BMYP	1	HANDLE, Idler Arm
0120	703347	1	NUT, Center Lock, 3/8-16 YZ

Not For  
Reproduction

---

**Footnotes:**

0



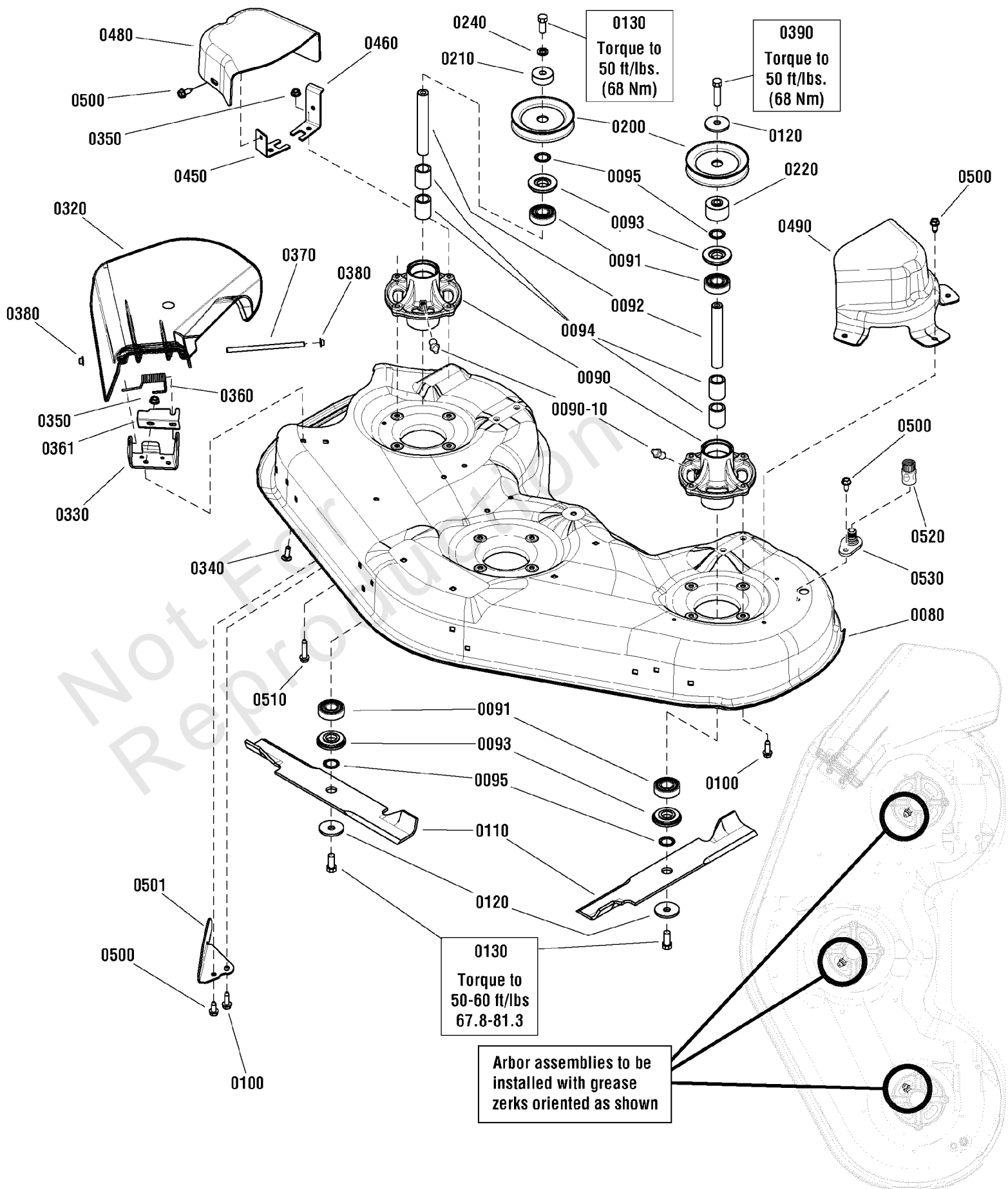
## 46" & 52" Mower Deck - Height Adjustment Group

REF NO	PART NO	QTY	DESCRIPTION
0010	1736070BMYP	1	SUPPORT, Rear Cross
0020	1736072AYP	1	BRACKET, Rear Mower Pickup
0030	1736073AYP	1	BRACKET, Rear Mower Pickup
0040	1960373SM	8	SCREW, Hex Washer Head, Taptite, 5/16-18 x 1
0050	1736071BMYP	1	HITCH, Front
0080	1736081YP	2	ROD, Front Bail
0090	1737059AYP	1	HANGER, Front Mower
0100	1731414SM	1	ROD, Latch
0110	2176012SM	1	RETAINER, Pin Spring
0120	1679166SM	2	SPACER, 1/2
0130	1960379SM	2	NUT, Hex Lock, Esna Light, 1/2-13
0140	1736074BMYP	2/1	BRACKET, Gauge Wheel, Right -(Qty 2 on Tuff Torque Model)
0150	1736075BMYP	2/1	BRACKET, Gauge Wheel, Left -(Qty 2 on Tuff Torque Model)
0160	1931334SM	11/7	BOLT, Carriage, 5/16-18 x 7/8 G5 -(Qty 11 on Tuff Torque Model)
0170	1931277SM	13/9	NUT, Hex Flange, Whiz Lock, 5/16-18 -(Qty 13 on Tuff Torque Model)
0180	1736896YP	4/2	WHEEL, Gauge -(Qty 4 on Tuff Torque Model)
0190	1736539YP	4/2	BOLT, Shoulder, 3/8-16 x 3-1/2 -(Qty 4 on Tuff Torque Model)
0200	1960170SM	6/4	WASHER, 1/2 -(Qty 6 on Tuff Torque Model)
0210	1960687SM	4/2	NUT, Hex Flange, Esna, 3/8-16 -(Qty 4 on Tuff Torque Model)
0220	1736991AYP	1	UP STOP
0240	1913744SM	2	NUT, Hex Jam, 1/2-13
0250	1960074SM	2	CLIP, Hair Pin
0260	703185	2	BOLT, Carriage, 5/16-18 X 3/4

# 46" & 52" Mower Deck - Housing, Arbor & Blades Group

Note: Unless noted otherwise, use the standard torque specifications

Mfg. No: 2691022-01





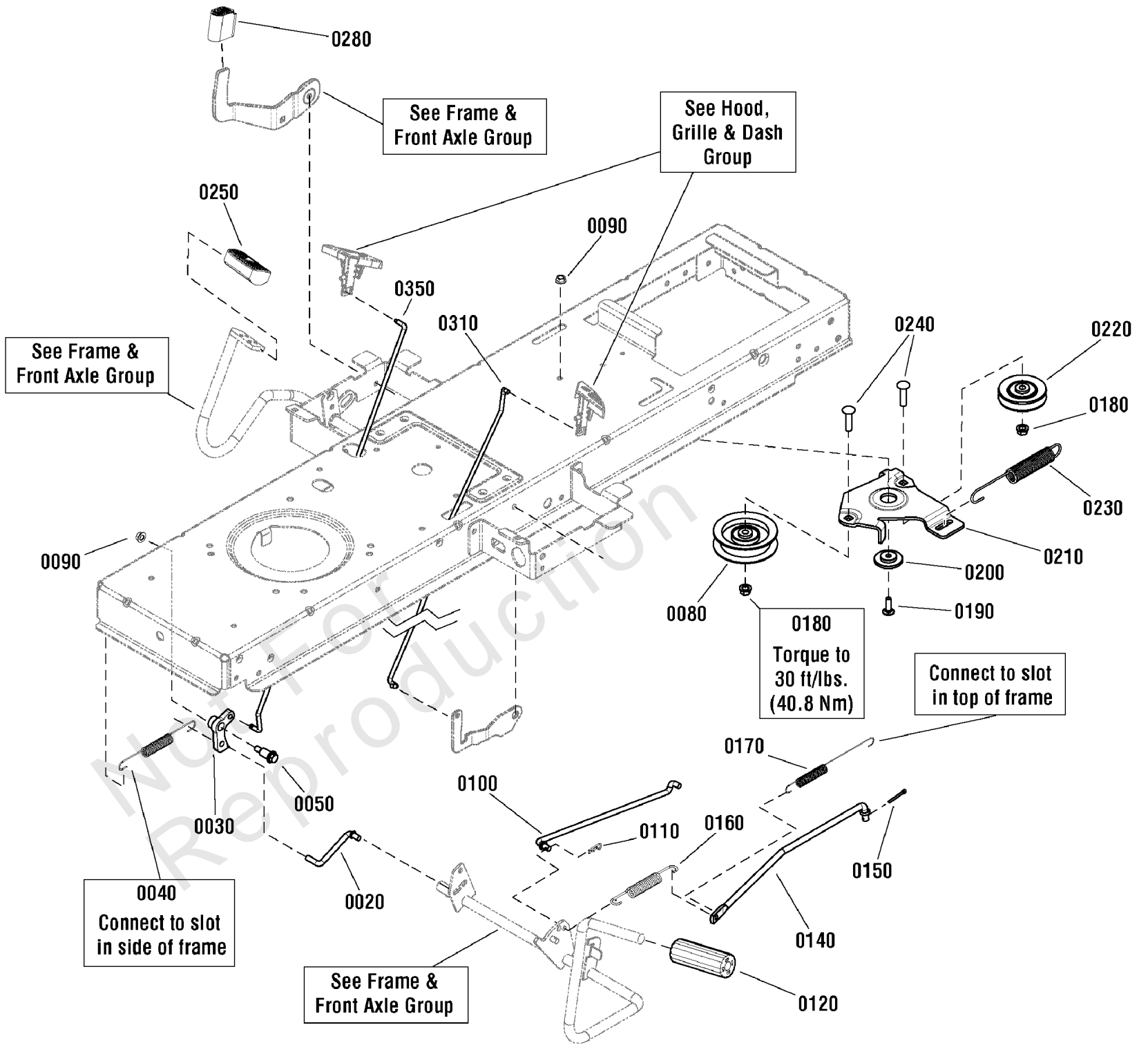
## 46" & 52" Mower Deck - Housing, Arbor & Blades Group

REF NO	PART NO	QTY	DESCRIPTION
0080	1738864D	1	HOUSING, 52"
0080	1738863D	1	HOUSING, 46"
0090	1735573	3	HOUSING, W/Lube Fitting
0090-10	1704314	3	FITTING, Lubrication
0091	1735399	6	BEARING, Ball 20mm -(46" Models Only)
0092	1735326	3	SHAFT, Spindle, 20mm Dia. x 134.6mm
0093	1735323	6	SHIELD, Arbor, 2-1/16 OD -(46" Models Only)
0094	1735328	6	SPACER, Bearing -(46" Models Only)
0095	1960766	6	RING, Self Locking -(46" Models Only)
0100	1960373	10	CAPSCREW, Hex Washer Head, Taptite, 5/16-18 x 1
0110	1737228	3	BLADE, Mower, 16-1/8 Long -(46" Models Only)
0110	1737252	3	BLADE, Mower, 18-1/2 Long -(52" Models Only)
0120	1656916	4	WASHER, Spring, 15/32 ID x 1-3/4 OD
0130	1920676	5	CAPSCREW, Hex Head, 7/16-14 x 1, G5
0200	1735733	3	PULLEY, 5-1/2 OD -(52" Models Only)
0200	1735686	3	PULLEY, 4-5/8 OD -(46" Models Only)
0210	1735579	2	SPACER, Lower Drive
0220	1736445	1	SPACER, Pulley
0240	1960769	4	WASHER, Belleville, 0.45 ID
0240	1918199	2	LOCKWSHER, Spring, 7/16 -(46" CE/Export Models Only)
0320	1735447	1	DEFLECTOR, Discharge
0330	1737418A	1	HINGE, Deflector -(52" Models Only)
0330	1736365A	1	PIVOT, Hinge -(46" Models Only)
0340	1931333	2	BOLT, Carriage, 5/16-18 x 3/4, G5
0350	1931277	4	NUT, Hex Flange Whiz Lock, 5/16-18
0360	1736364	1	SPRING, Torsion, Deflector, 2-5/32 -(46" Models Only)
0361	1737359A	1	PLATE, Deflector Closeoff
0370	1736366	1	ROD, Deflector
0380	7012542	2	PUSHNUT, 5/16
0390	1923027	1	CAPSCREW, Hex Head, 7/16-14 x 3/4, G5
0450	1736518A	1	BRACKET, Belt Cover, Front
0460	1736519A	1	BRACKET, Belt Cover, Rear
0480	1735752	1	COVER, Belt, R.H.
0490	1735750	1	COVER, Belt, L.H. -(46" Models Only)
0490	1736505	1	COVER, Belt, L.H. -(52" Models Only)
0500	1664847	7	CAPSCREW, Hex Washer Head, Taptite, 5/16-18 x 3/4
0501	1737279A	1	BAFFLE, Pinchoff
0510	1930600	2	CAPSCREW, Hex Washer Head, Taptite, 5/16-18 x 1-1/2
0520	1736898	1	WASHOUT PORT, Connector
0530	1735716	1	ADAPTER, Washout Port

# Controls Group

Note: Unless noted otherwise, use the standard torque specifications

Mfg. No: 2691022-01



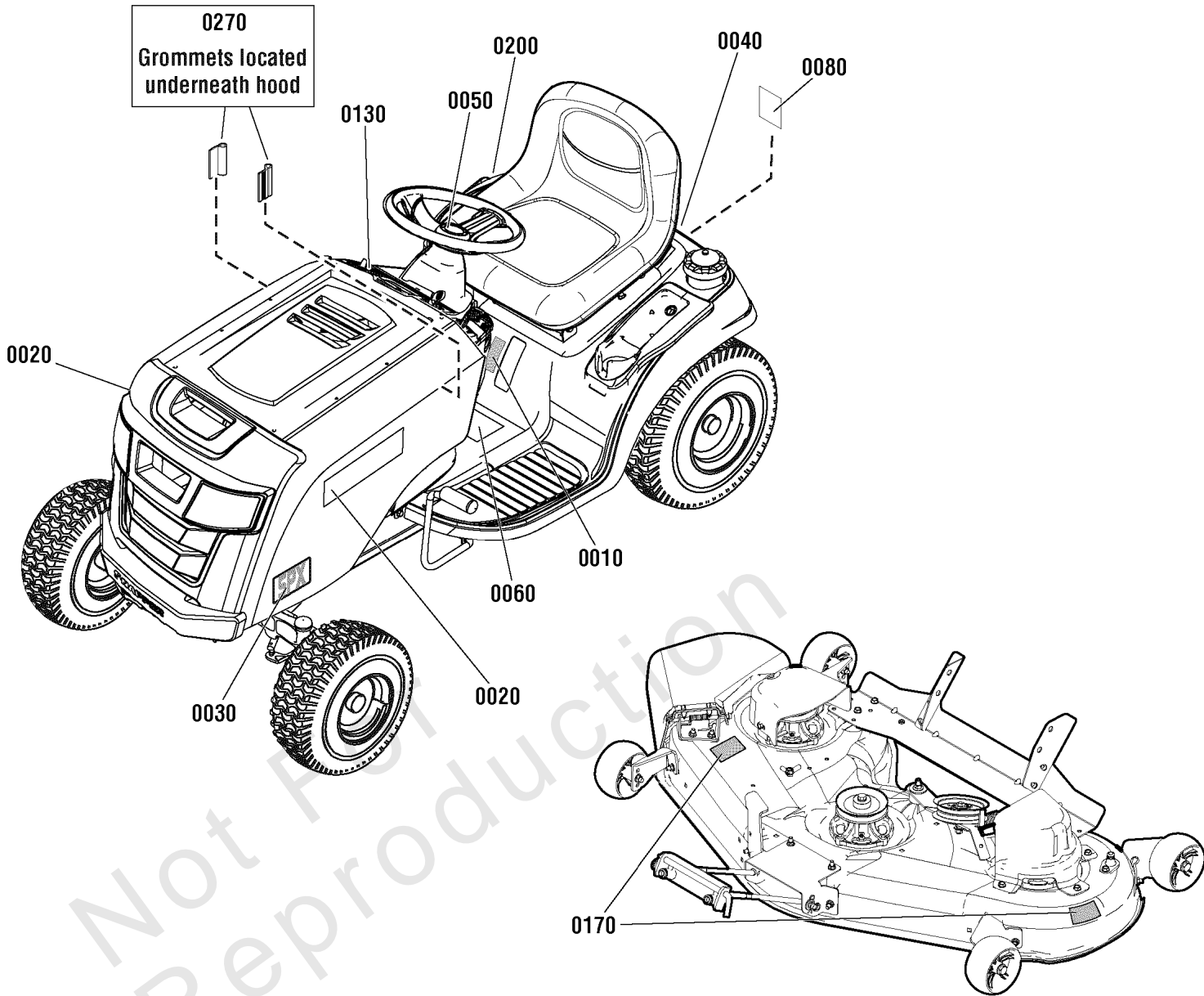
## Controls Group

REF NO	PART NO	QTY	DESCRIPTION
0020	1727899SM	1	ROD, Cruise Latch, 5/16 Dia. x 2-13/16 Long
0030	1727897SM	1	LATCH, Cruise
0040	2159181SM	1	SPRING, Extension, 9/16 OD x 7-3/4 LG, .049 Wire
0050	1728976SM	1	BOLT, 5/16-18 X 1.62, G5, Shoulder
0080	1728000SM	1	PULLEY, Idler, 3-1/8 OD, 3/8 ID
0090	703409	2	NUT, 5/16-18, Serrated Lock Flange, GR5
0100	1727254SM	1	ROD, Brake Return, 5/16 Dia. x 12-5/8 Long
0110	703430	1	HAIRPIN, Quick, .080 Wire, 1.19LG, Zinc/Clear
0120	1727261SM	1	PEDAL, Brake Rubber
0140	1727253SM	1	ROD, Brake, 3/8 Dia. x 15-1/8 Long
0150	703312	1	PIN, 3/32 X 3/4, GR5, Cotter, Zinc/Clear
0160	1731262SM	1	SPRING, Extension, 0.70 OD X 5.37 LG, .115Wire, BLK
0170	1721995SM	1	SPRING, Extension, .62 OD, 6.62" LG, .071 Wire, BLK
0180	703158	2	NUT, 3/8-16, Hex Flange, ESNA, Zinc/Clear
0190	703800	1	BOLT, 5/16-18 X 1.0, Short Neck Carriage, ZC/CL
0200	1727935SM	1	SPACER, Pivot, 0.330 ID, 1.76 OD, .37TH P MTL
0210	1727894SM	1	BRACKET, Idler
0220	1728001SM	1	PULLEY, Idler, 3-1/8 OD, 3/8 ID
0230	1729620SM	1	SPRING, .98 OD X 7.52" LG, .11 Wire, Extension, Blk
0240	1931352SM	2	BOLT, Carriage 3/8-16X1.500 G5 BLK
0250	1721675SM	1	PAD, Forward Foot Pedal, Black Rubber
0280	1727259SM	1	PAD, Reverse Foot Pedal, Black Rubber
0310	1739876YP	1	ROD, Parking Brake, 1/4 Dia. x 16-3/8 Long
0350	1739877YP	1	ROD, Cruise, 1/4 Dia. x 17

# Decals Group - 42", 46" & 52" Deck

Note: Unless noted otherwise, use the standard torque specifications

Mfg. No: 2691022-01



0200

0010

0080

0130

0030

0170

0040

0060

0050

0020

## Decals Group - 42", 46" & 52" Deck

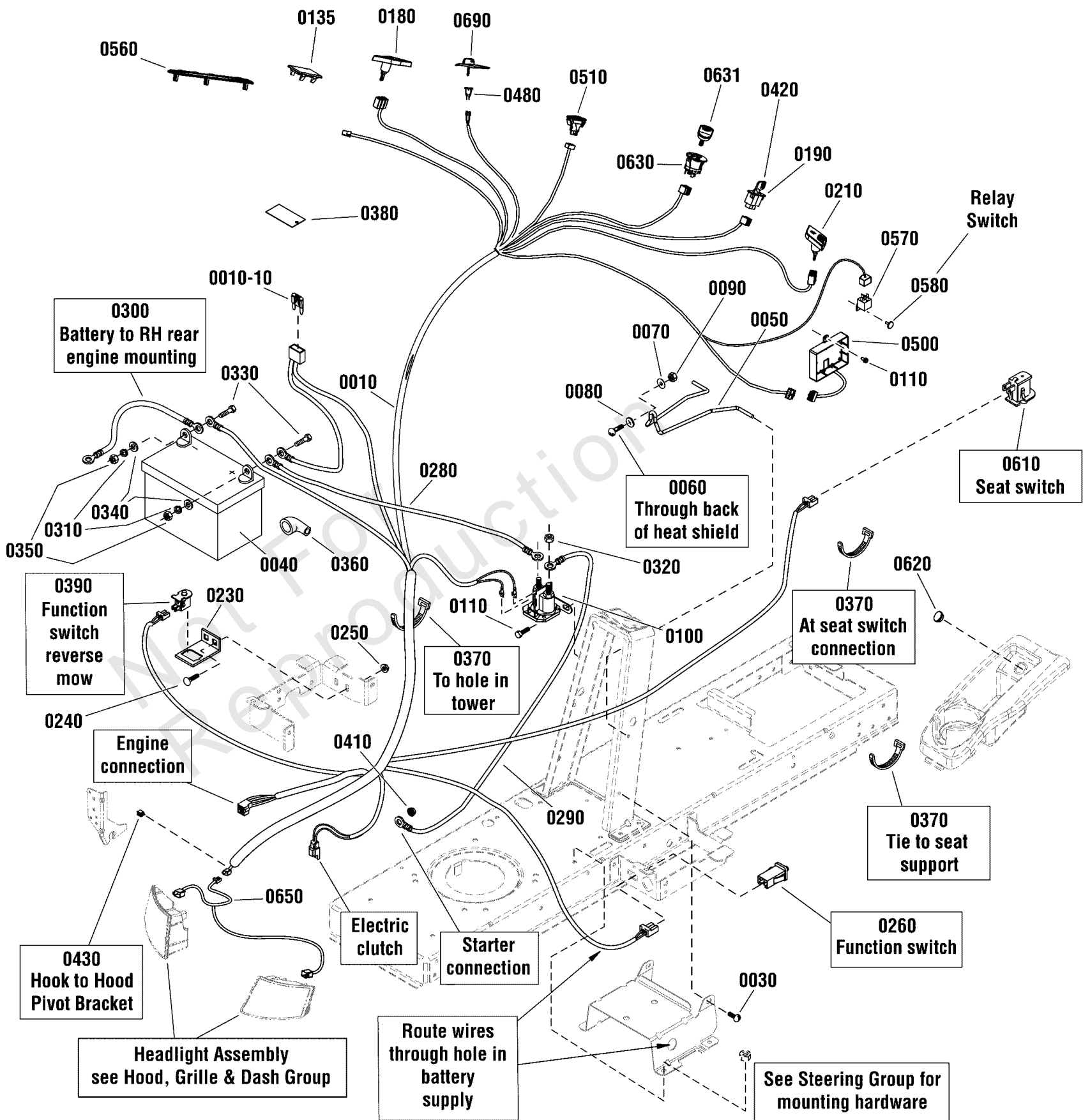
REF NO	PART NO	QTY	DESCRIPTION
0010	7104808	1	DECAL, Deck, 42"
0010	7101665	1	DECAL, Deck, 46"
0010	7101665	1	DECAL, Deck, 52"
0020	1751632	2	DECAL, Snapper, Turtle
0030	7104875	2	DECAL, Front Cover, SPX Series
0040	7104148	1	DECAL, Logo, Snapper 7-7/8
0050	1739085	1	DECAL, Snapper, Steering Wheel Icon
0060	1734879	1	DECAL, Tunnel Danger Slopes
0080	1730202	1	DECAL, Transom Tow Release Lever
0130	1739028	1	DECAL, Replace Starter Insert
0170	7101665	2	DECAL, Danger Do Not Operate w/o Deflect
0200	1730264	1	DECAL, Height Of Cut
0270	1739825	2	GROMMET, Strip
-----		1	DECAL, Evap -(See Seat Deck & Fuel Tank Group)

Not For  
Reproduction

# Electrical Group

Note: Unless noted otherwise, use the standard torque specifications

Mfg. No: 2691022-01



## Electrical Group

REF NO	PART NO	QTY	DESCRIPTION
0010	1753020	1	WIRING HARNESS -(42" Models Only)
0010	1738984	1	WIRING HARNESS -(46 & 52" Models Only)
0010-10		1	* FUSE, Mini, 20 Amp -(Included with Ref. No. 0110)
0030	703949	2	SCREW, Hex Washer Head, Taptite, 5/16-18 x 5/8
0040		1	BATTERY, 12 Volt, 230 CCA
0050	1730007SM	1	HOLD DOWN, Battery
0060	1931318SM	1	BOLT, Carriage, 1/4-20 x 7/8, G5
0070	1960353SM	1	WASHER, 1/4 x 27/32, Flat, BZ
0080	703826	1	RETAINER, 1/4", Pushnut
0090	703232	1	NUT, 1/4-20, Nylock, GR A, Zinc/Clear
0100	1755381YP	1	SOLENOID, 12V, L-Bracket, 2-Spade
0110	704130	2	SCREW, 1/4-20 X .500, Hex HD, Self-Tap, Zinc/Clear
0135	1722611SM	1	PLUG, Hole 27/32 x 1-3/4
0180	1738982YP	1	SWITCH, PTO
0190	1726556SM	1	SWITCH, RMO, Module Only
0210	1738983YP	1	SWITCH, Light
0230	1728026ASM	1	SUPPORT, RMO Switch
0240	703225	2	BOLT, Carriage, 5/16-18 x 3/4, G5
0250	703409	2	NUT, 5/16-18, Serrated Lock Flange, GR5
0260	7022886YP	1	SWITCH, DP, NO/NC, Snap-In
0280	1716549SM	1	CABLE, Two Ring, #6 x 10
0290	1721830SM	1	CABLE, #6 x 25
0300	1713163SM	1	CABLE, # 6 x 26
0310	2816964SM	2	LOCKWASHER, 1/4
0320	2860750SM	2	NUT, Hex, Keps, 5/16-24
0330	703925	2	CAPSCREW, Hex Head, 1/4-20 x 3/4, G5
0340	703332	2	WASHER, 1/4, Flat, GR5
0350	2816622SM	2	NUT, Hex, 1/4-20
0360	1677296SM	1	BOOT, Insulator Battery Terminal, Red
0370	703586	4	TIE, Self Locking, 7-5/16
0380	1725403YP	1	TAG, Battery Charging Warranty
0390	1732004SM	1	SWITCH, Push Button, NO, Black
0410	703233	1	NUT, Hex Flange Whiz Lock, 1/4-20
0420	1726557SM	2	KEY, No Mow Module (Yellow)
0430	2172434SM	1	CLIP, Panel
0480	790827	1	SWITCH, Starter (Without Key, see 0690 below) -(46 & 52" Models Only)
0500	1739020YP	1	PANEL, Control, Push Button -(46 & 52" Models Only)
0510	1739277YP	1	SWITCH ASSEMBLY, Push Button -(46 & 52" Models Only)
0560	1752934YP	1	PLUG, Dash, No Hourmeter
0570	1726829SM	1	RELAY, Single Pole, Double Throw -(46 & 52" Models Only)
0580	1704351SM	1	FASTENER, Panel -(46 & 52" Models Only)
0610	7023354YP	1	SWITCH, Push Button, NC, Gray
0620	1732007SM	1	PLUG, Hole, 7/8 Dia.

### Footnotes:

Note\* See your local hardware store for replacement fuses.





## Electrical Group

REF NO	PART NO	QTY	DESCRIPTION
0630	7600215YP	1	SWITCH, Ignition (Without key) (Key Blister Pack #1750464) -(Used on 2691020)
0631	1750464YP	1	KEY, Ignition Switch, Trombetta Snap-in Switch (Blister Pack contains 2 keys) -(Used on 2691020)
0650	1751941YP	1	HARNESS, Headlight, Led Lights -(Used on 2691020)
0690	1753240YP	1	PLUG, Starter Insert -(42" Models Only)
0690	1739029YP	1	KEY, Starter Insert Blister Pack, US (Includes #1738614) -(46 & 52" Models Only)
0690	1737837YP	1	KEY, Starter Insert Blister Pack, Canada/CE (Includes #1739534) -(46 & 52" Models Only)

Not For  
Reproduction

---

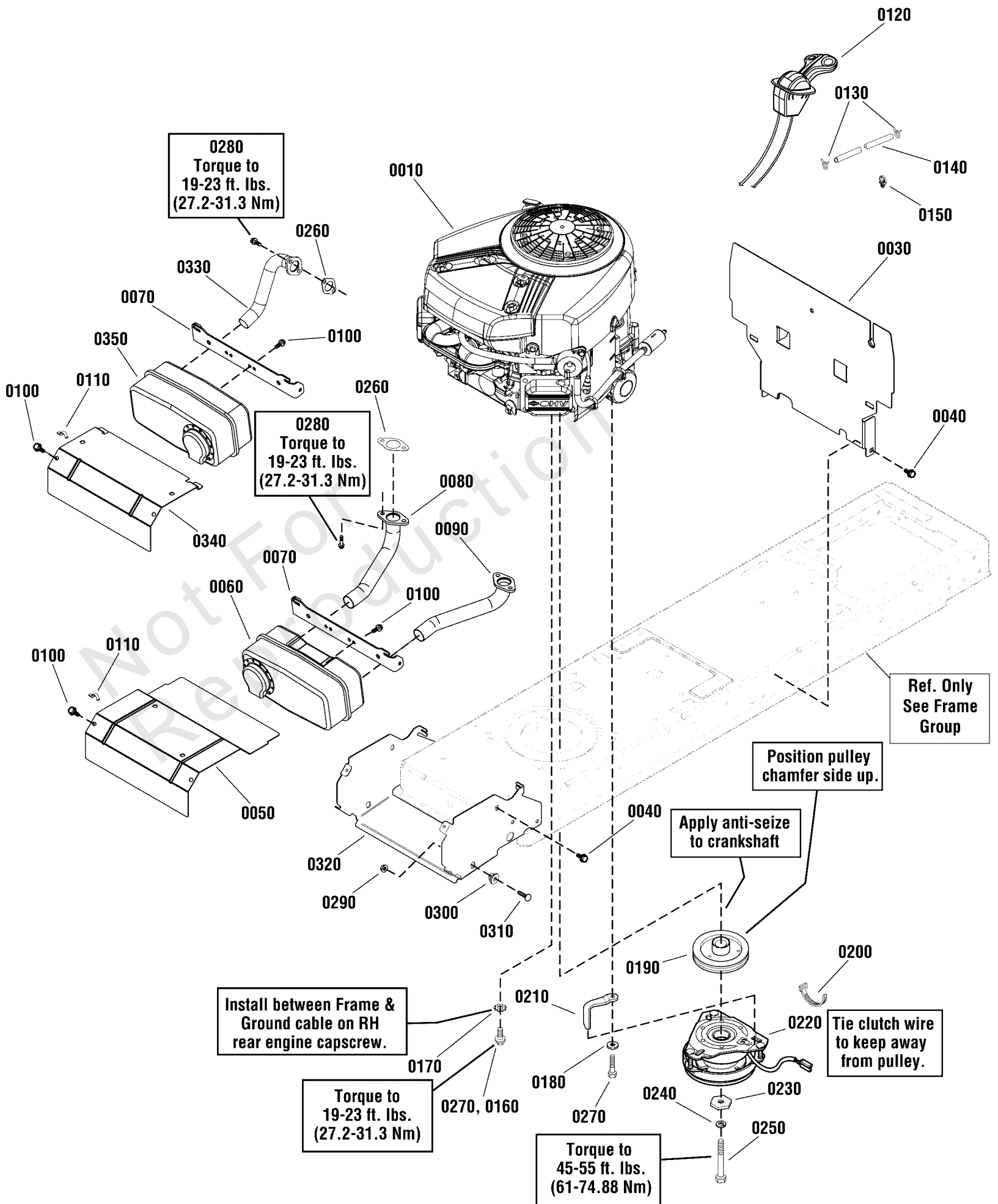
**Footnotes:**

Note\* See your local hardware store for replacement fuses.

# Engine Group - 20, 22 & 23HP Briggs & Stratton EFM Twin Professional Series

Note: Unless noted otherwise, use the standard torque specifications

Mfg. No: 2691022-01



## Engine Group - 20, 22 & 23HP Briggs & Stratton EFM Twin Professional Series

REF NO	PART NO	QTY	DESCRIPTION
0010	33M677-0110-G5	1	* ENGINE, 20 HP Pro Series, Twin -(Engine Model: 33M677-0110-G5, 42" Models Only)
0010	40H777-0151-G5	1	* ENGINE, 23 Gross HP Briggs & Stratton Pro Series, Twin -(Engine Model: 40H777-0151-G5, 46" Models Only)
0010	44L777-5110-G5	1	* ENGINE, 23 Gross HP Briggs & Stratton Pro Series, VS Twin -(Engine Model: 44L777-5110-G5, 52" Models Only)
0030	1738380A	1	HEAT SHIELD, Engine
0040	1930601	8	CAPSCREW, Hex Flange Washer Head, Taptite, 5/16-18 x 5/8
0050	1727997A	1	SHIELD, Heat B&S Twin 20GA -22 & 23HP Only
0060	1727994	1	MUFFLER, B&S Twin Regent 2006 -22 & 23HP Only
0070	1727976A	1	SUPPORT, Heat Shield, Muffler
0080	1727979	1	PIPE, Exhaust With Flange, RH, 1-1/4OD -22 & 23HP Only
0090	1727980	1	PIPE, Exhaust With Flange, LH, 1-1/4OD -22 & 23HP Only
0100	1925003	4	SCREW-HEX WSHR HD TAPTT 1/4-20X0.500 BLK
0110	2834683	1	CLIP, Wire, 1/8 Dia.
0120	1738794	1	CONTROL, Throttle (Choke-A-Matic)
0120	1750217	1	Control, Throttle, Choke-A-Matic, Twin -22 & 23HP Only
0130	93053	2	Clamp, Hose (Green)
0140	1734993	1	HOSE, Fuel, Low Perm, 1/4ID x 1/2OD x 55.5 Lg
0150	1730268	1	CLIP, Hose, Plastic Push In, 1/2 Dia.
0160	2827187	2	CAPSCREW, Hex Washer Head, Taptite, 3/8-16 x 1
0170	2820427	1	WASHER, Locking, External Teeth, 3/8
0180	1924940	1	Flatwasher, 3/8
0190	1732576	1	PULLEY & HUB ASSEMBLY, Engine
0200	2825094	1	TIE, Self Locking, .184 Wide 7.31 Long
0210	1737421A	1	GUIDE, Belt Retainer, Clutch
0220	1736105	1	CLUTCH, Electric, Mid Ogura
0230	1708264	1	WASHER, Hex, .453 I.D. x 1-1/2"
0240	1960769YP	2	WASHER, Belleville
0250	1960649	1	CAPSCREW, Hex Head, 7/16-20 x 3-1/2, 20HP
0260	1731214	1	GASKET, Exhaust B&S Reg (No Chre) 273485
0270	2828635	2	CAPSCREW, Hex Washer Head, Taptite, 3/8-16 x 1-1/4
0280	94480	2	Screw, Sem Hex Head (Used On Electric Start Engines)
0290	1931277	2	NUT, Hex Flange Whiz Lock, 5/16-18 all Black
0300	1728086	2	PIVOT, Hood
0310	1931335	2	BOLT, 5/16-18 x 1" Round Head Short Square Neck, GR 5 Zinc
0320	1738265A	1	SUPPORT, Muffler & Hood Pivot
0330	1728959	1	PIPE, Exhaust, W/ Flange, 1-1/8OD, Single -20HP Only
0340	1727996A	1	SHIELD, Heat Single Cycle 20GA -20HP Only
0350	1727993	1	MUFFLER, B&S Single -20HP Only

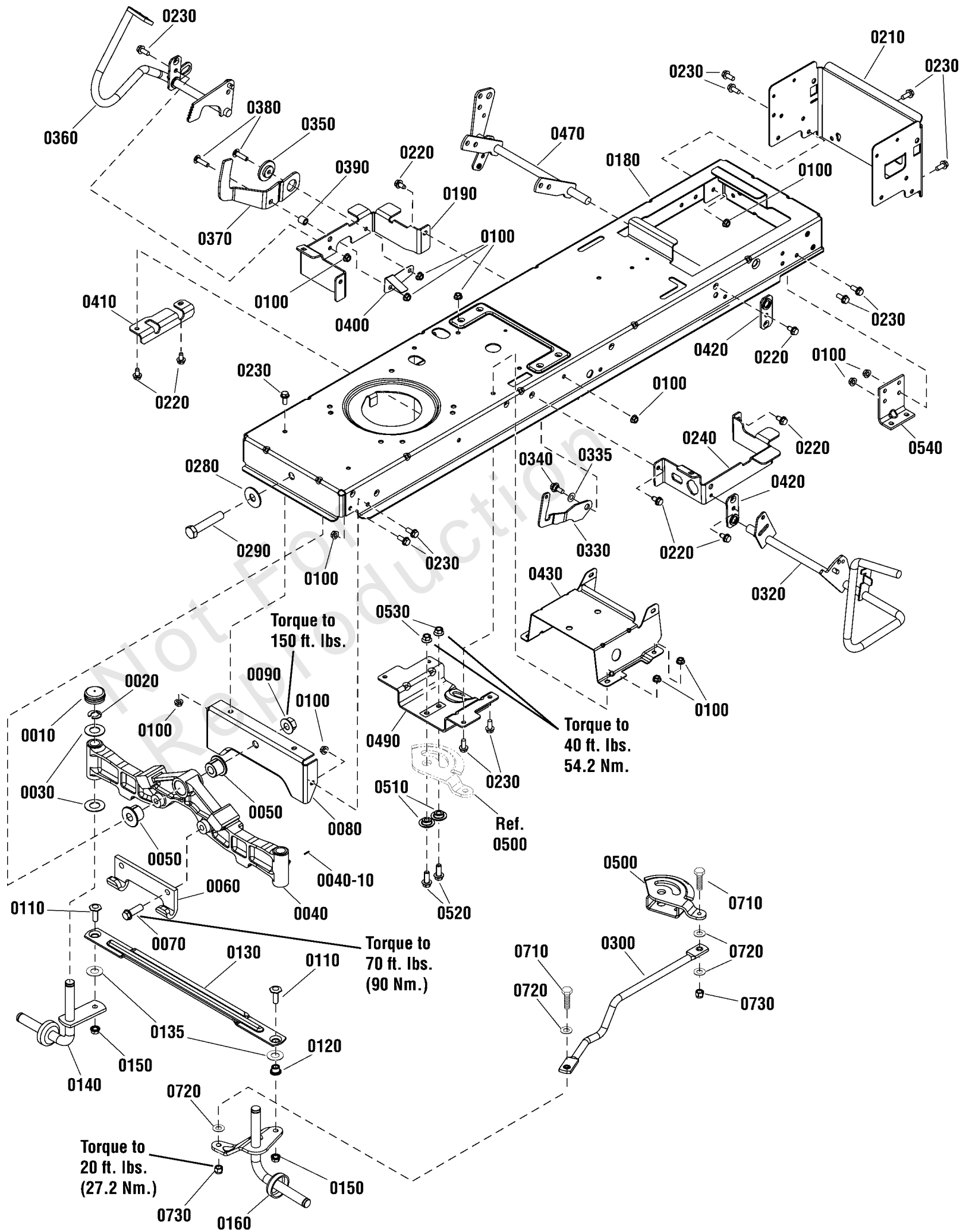
### Footnotes:

Note\* To verify your specific engine model, please reference the ID Tag located on your engine. See your local Briggs & Stratton distributor for parts and service.

# Frame & Front Axle Group

Note: Unless noted otherwise, use the standard torque specifications

Mfg. No: 2691022-01



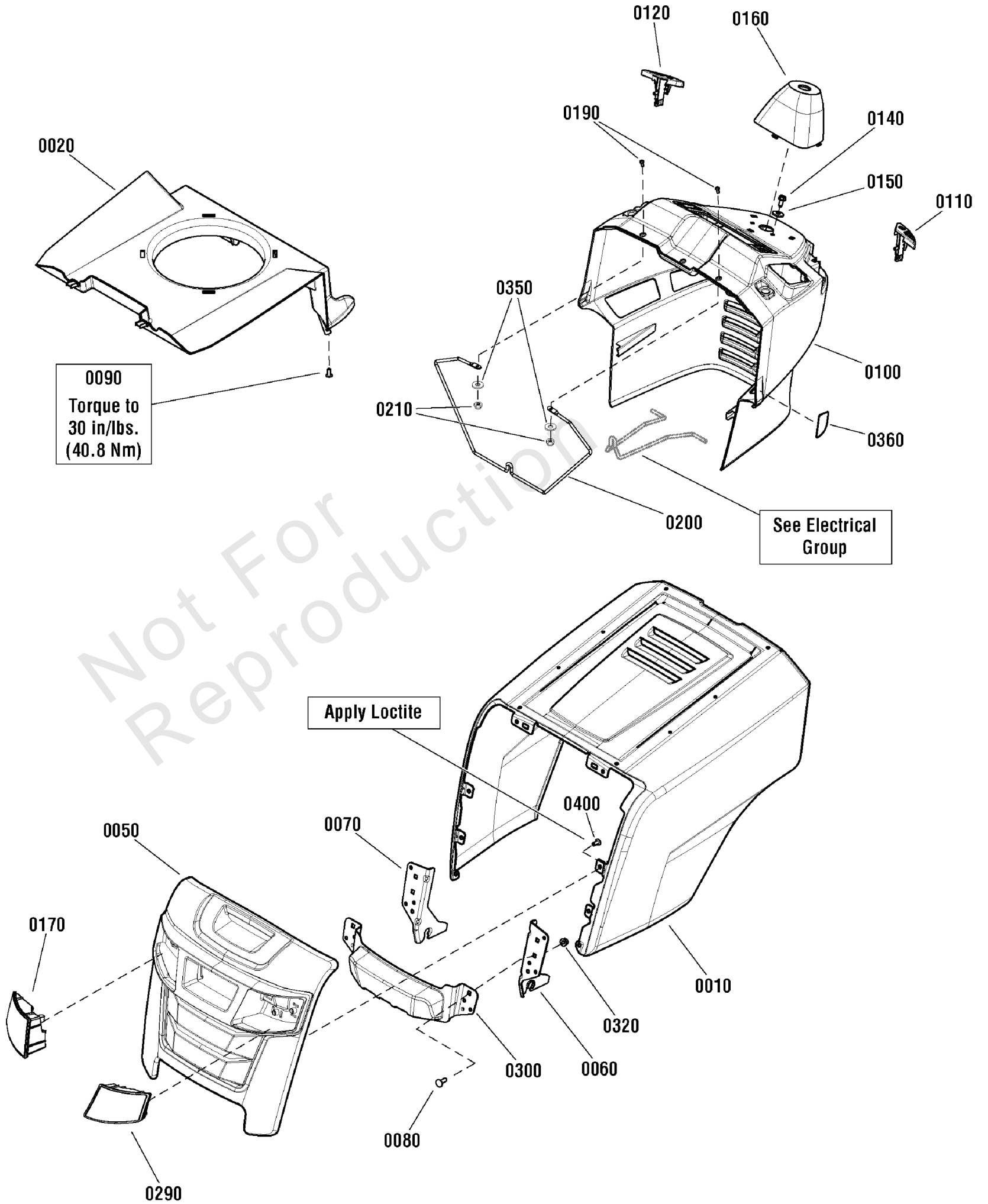
## Frame & Front Axle Group

REF NO	PART NO	QTY	DESCRIPTION
0010	1734135	2	CAP, Hub, 1.48 ID x .62 Long
0020	1611710	2	RING, Klipring, 3/4 Dia.
0030	2860183	4	WASHER, 3/4 x 1-5/8 OD x 1/16 Thick
0040	1728018	1	AXLE, Front -(Includes Ref. No. 0040-10)
0040-10	1704314	3	FITTING, Zerk
0050	1730186	2	BUSHING, Axle Pivot
0060	1721918	1	HOOK, Mower, Hitch
0070	1960652	2	CAPSCREW, Hex, Whiz Lock, 7/16-14 x 1-1/2
0080	1727902	1	PLATE, Axle Support
0090	2860646	1	NUT, Hex Flange, Two Way, 5/8-11
0100	1931277	25	NUT, Hex Flange, Whiz Lock, 5/16-18
0110	1960032	2	CAPSCREW, Hex Head, 3/8-16 x 1-1/4, G5
0120	1731912	2	BUSHING, 3/8 ID x 5/8 OD x 9/16 Long
0130	1751964	1	TIE ROD, Flat
0135	1960703	2	WASHER, Flat, 5/8
0140	1727872	1	WHEEL SPINDLE ASSEMBLY, R.H.
0150	1930645	2	NUT, Hex Flange, Two Way, Locking, 3/8-16
0160	1751922	1	WHEEL SPINDLE ASSEMBLY, L.H.
0180	1738937	1	FRAME
0190	1727904	1	SUPPORT, Front Footrest, R.H.
0210	1738229	1	SUPPORT, Rear Frame
0220	1930601	9	CAPSCREW, Hex Washer Head, Taptite, 5/16-18 x 5/8
0230	1930591	21	CAPSCREW, Hex, Whiz Lock, 5/16-18 x 3/4
0240	1727905	1	SUPPORT, Front Footrest, L.H.
0280	1960035	1	WASHER, 5/8 x 1-3/4 OD
0290	2860744	1	CAPSCREW, Hex Head, 5/8-11 x 3-1/4, G5
0300	1738051	1	LINK, Drag (with Bearing), 5/16
0320	1736404	1	PEDAL ASSEMBLY, Brake
0330	1735595	1	LATCH, Brake Lock
0340	1729576	1	BOLT, Shoulder, 5/16-18 x 15/32, G5
0350	1727935	1	SPACER, Pivot, 11/32 ID 1-3/4 OD
0360	1736714	1	PEDAL ASSEMBLY, Forward
0370	1727246	1	PEDAL, Reverse
0380	1960223	2	BOLT, Carriage, 5/16-18 x 1-1/4, G5
0390	1728024	1	SPACER, Foot Pedal
0400	1728025	1	ACTUATOR, RMO Switch
0410	1727909	1	BRACKET, Pedal Pivot
0420	1727911	2	PLATE, Bearing
0430	1727282	1	SUPPORT, Battery
0470	1737957	1	LIFT SHAFT ASSEMBLY
0490	1727940	1	BRACKET, Sector Support
0500	1751110	1	GEAR, Steering
0510	1728122	2	SPACER, Sector Gear, 3/8 ID x 1-1/4 OD
0520	1934654	2	CAPSCREW, Hex, Whiz Lock, 3/8-16 x 1
0530	1931211	2	NUT, Hex Flange, Whiz Lock, 3/8-16
0540	1727903	2	SUPPORT, Transmission
0710	1921977	2	CAPSCREW, Hex Head, 5/16-18 x 1-1/4, G5
0720	703302	2	WASHER, Flat, 5/16
0730	1935048	2	NUT, Hex Flange, Two Way Lock, 5/16-18

# Hood, Grille & Dash Group

Note: Unless noted otherwise, use the standard torque specifications

Mfg. No: 2691022-01



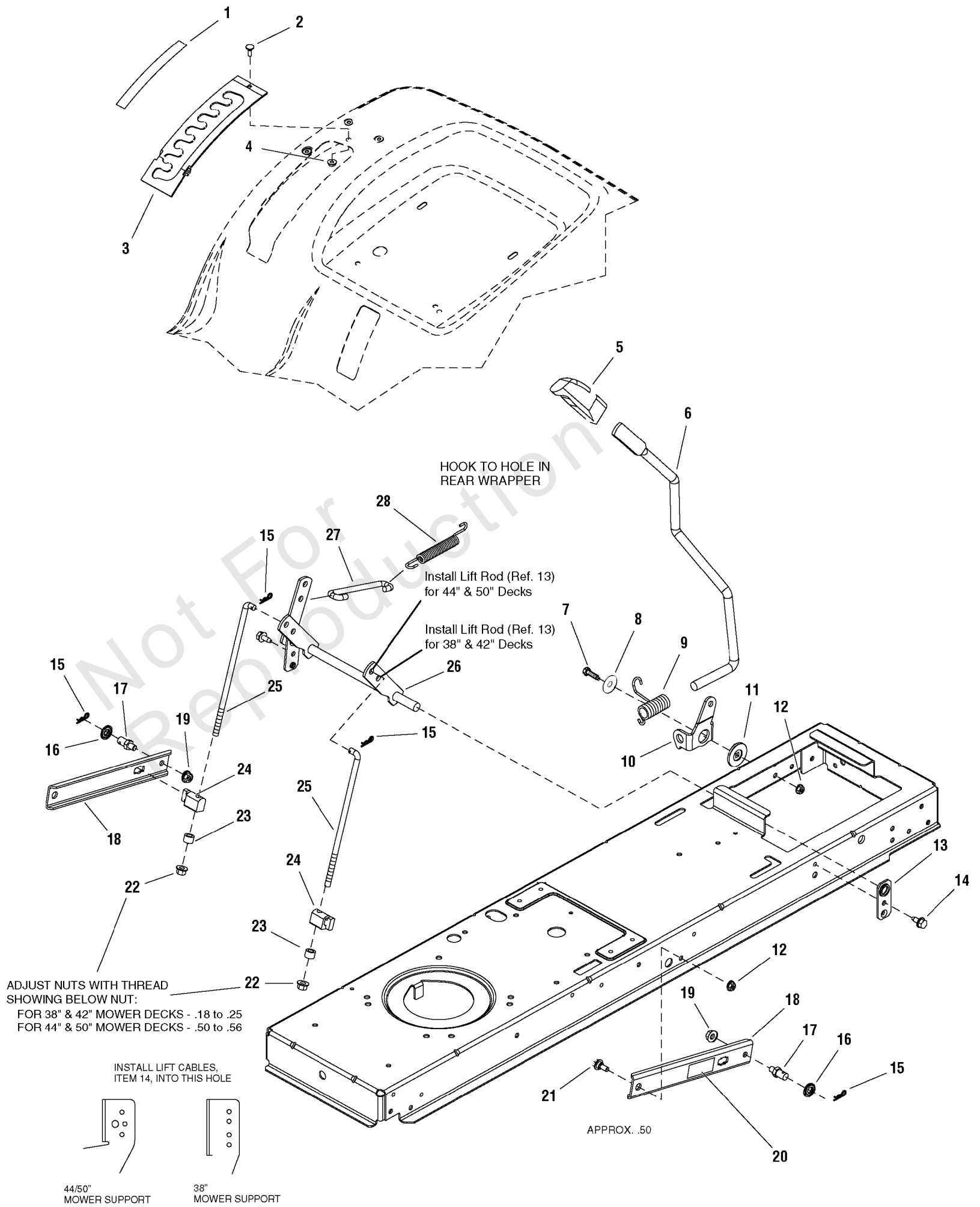
## Hood, Grille & Dash Group

REF NO	PART NO	QTY	DESCRIPTION
0010	1753164D	1	HOOD, One Piece, Center Emboss
0020	1738734	1	AIR DUCT
0050	1752929	1	GRILLE, Front
0060	1738566A	1	HINGE, Hood, LH
0070	1738565A	1	HINGE, Hood, RH
0080	7091714	2	BOLT, Carriage, 5/16 x 1, G5
0090	1739220	2	SCREW, 7mm x 16mm
0100	1753166	1	DASH, Nxt - Black
0110	1738789	1	KNOB, Parking Brake
0120	1738788	1	KNOB, Cruise
0140	1664847	2	SCREW, Hex Washer Head Taptite, 5/16-18 x 3/4
0150	1919381	2	WASHER, 5/16 x 1
0160	1738790	1	COVER, Steering Shaft
0170	1753167	1	HEADLIGHT, Led, LH
0190	1739942	2	SCREW, Pan Head Phillips, #10-24 x 7/8
0200	1738964	1	ROD, Dash Support, 1/4 Dia. x 10"
0210	1933896	2	NUT, Ny-Lock 10-24
0290	1753168	1	HEADLIGHT, Led, RH
0300	1753169BM	1	BUMPER, Front
0320	1960686	2	NUT, Hex Flange, 5/16-18, ESNA
0350	1960353	2	WASHER, 1/4 x 27/32 OD
0360	1753895	1	TRIM, Protective
0400	1754203	8	SCREW, 7mm Dia. x 16mm

# Lift Group - Manual

Note: Unless noted otherwise, use the standard torque specifications

Mfg. No: 2691022-01





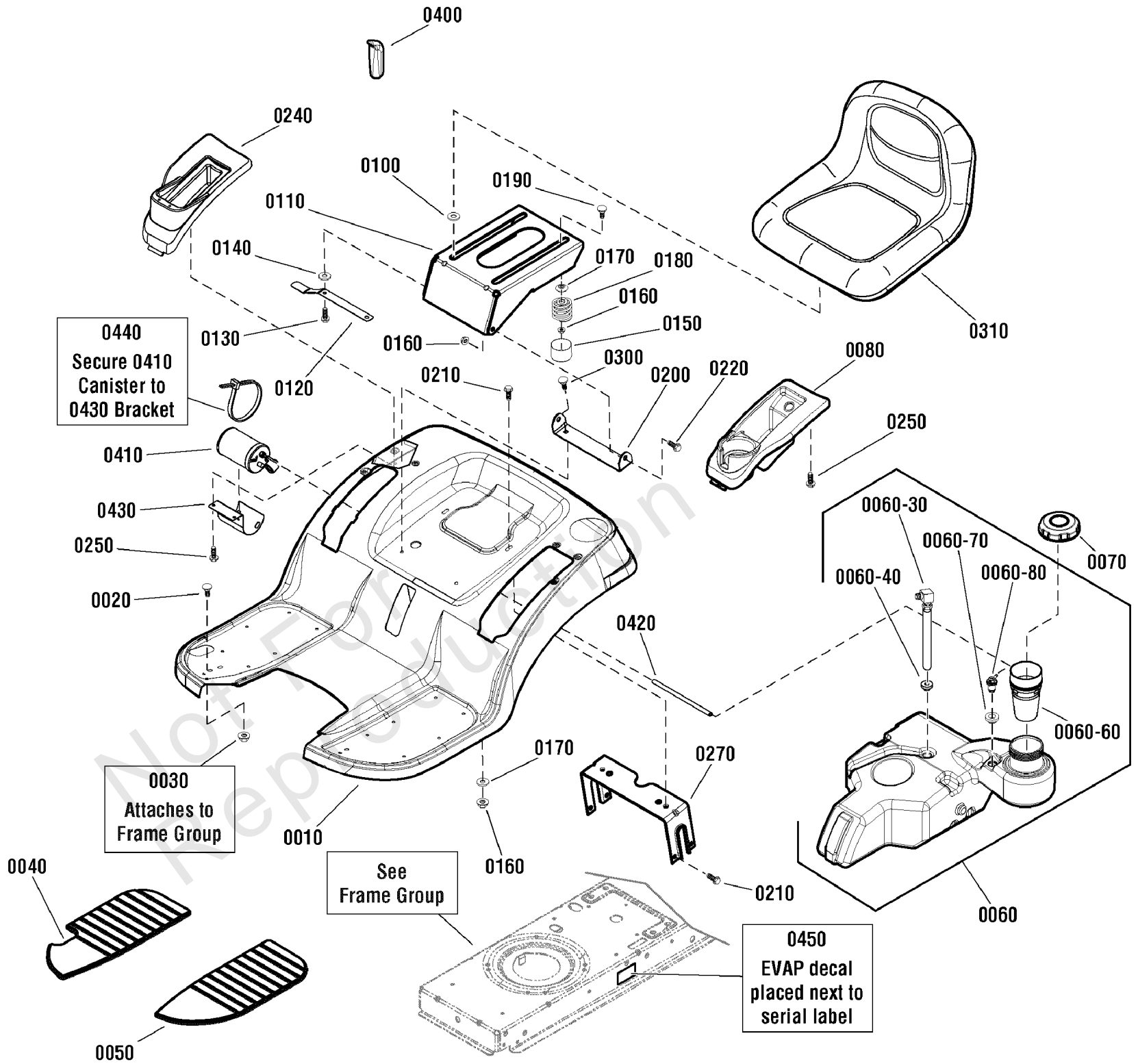
## Lift Group - Manual

REF NO	PART NO	QTY	DESCRIPTION
1	1730264	1	DECAL, Height Of Cut
2	1960252	1	BOLT, Carriage, 1/4-20 x 5/8 G5
3	1727985A	1	QUADRANT, Lift Height
4	1930641	1	NUT, Hex Flange Whiz, 1/4-20
5	1722302	1	GRIP
6	1728070	1	ROD, Lift Handle E-Coat, 17.7 LG
7	1921333	1	CAPSCREW, Hex Head, 5/16-18 x 1
8	1960044	1	WASHER, Plain, 21/64 x 1-1/4
9	1729652	1	SPRING, Torsion, 2.12 LG Black
10	1728990A	1	CLEVIS, Lift
11	1727935	1	SPACER, Pivot Powdered Metal
12	1931277	3	NUT, Hex, Flange Whizlock, 5/16-18
13	1727911A	1	PLATE, Bearing
14	1930601	2	SCREW, Taptite, 5/16-18 x 5/8
15	1960074	4	CLIP, Spring
16	1960170	2	WASHER, 1/2
17	2721135	2	PIN, Threaded Shoulder
18	1731417A	2	ARM, Lift Rear 10GA
19	1928352	2	NUT, Hex, Flange, Whizlock, 5/16-18 x 1/2
20	1732070	2	DECAL, CAUTION! Pinch Point
21	1732426	2	BOLT, Shoulder
22	1960687	2	NUT, Hex Flange, ESNA, 3/8-16
23	1656397	2	SPACER (Used on 38" & 42" Mower Decks)
23	1666294	2	SPACER (Used on 44" & 50" Mower Decks)
24	1731894	2	TRUNNION, Powdered Metal
25	1727955	2	ROD, Lower Lift, 10.00 LG
26	1727951A	1	SHAFT ASSEMBLY, Lift
27	1727954	1	ROD, Lift, 5.43 LG
28	1731939	1	SPRING, Extension 5.10 LG Black (Used on 44" & 50" Mower Decks)

# Seat Deck & Fuel Tank Group

Note: Unless noted otherwise, use the standard torque specifications

Mfg. No: 2691022-01



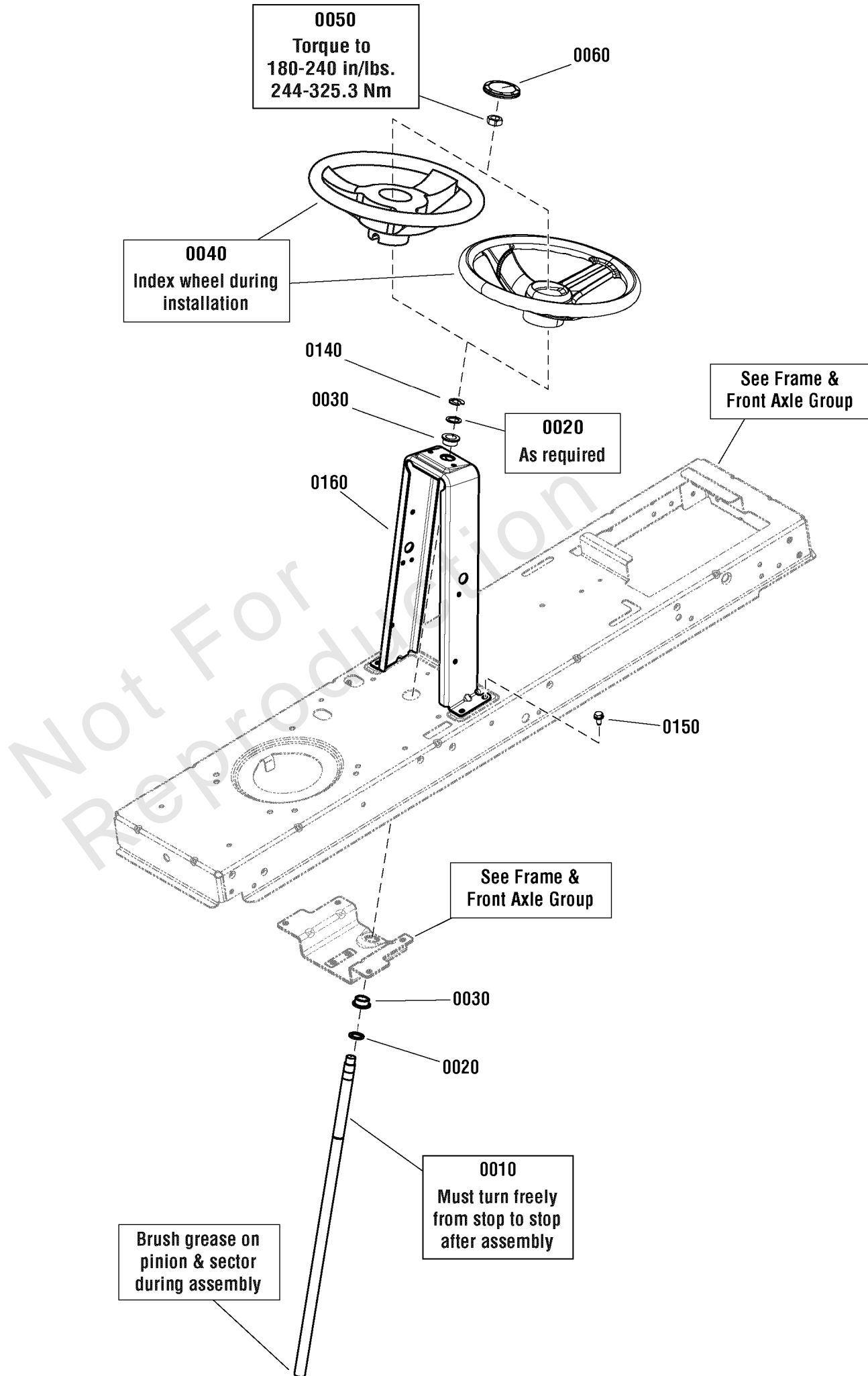
## Seat Deck & Fuel Tank Group

REF NO	PART NO	QTY	DESCRIPTION
0010	1727264D	1	DECK, Seat, Regent
0020	1931333	2	BOLT, Carriage, 5/16-18 x 3/4 G5
0030	1931277	2	NUT, Hex Flange Whiz Lock, 5/16-18
0040	1728007	1	PAD, Footrest RH
0050	1728006	1	PAD, Footrest LH
0060	1751226	1	FUEL TANK, Without Fuel Sender
0060-30	1736609	1	FITTING & HOSE ASSEMBLY
0060-40	1654930	1	BUSHING, Fuel Tank
0060-60	1751531	1	DROP TUBE
0060-70	209043	1	GROMMET
0060-80	7104638	1	REMOTE, Vent Assembly, No Valve
0070	5103005	1	CAP. Fuel, 3-1/2"
0080	1739015	1	POD, LH
0100	1731300	4	SPACER, 1/40 OD
0110	1727265A	1	SUPPORT, Seat
0120	1727268BM	1	LATCH, Seat
0130	1930595	4	SCREW, Hex Flange Wiz Lock, 5/16 x 1-1/4
0140	1919381	4	WASHER, 5/16 x 1 OD
0150	1704724	2	COVER, Spring 2 Idx 1-1/2
0160	1960686	6	NUT, Hex Flange, 5/16-18, ESNA
0170	1709256	4	WASHER, Spring, 21/64 x 1-1/4 OD
0180	1704728	2	SPRING, Compression, 19/32 x 2
0190	1960282	2	BOLT, Carriage, 5/16-18 x 3/4, G5
0200	1727266A	1	PIVOT, Seat
0210	1930601	6	SCREW, Hex Washr Head Taptite, 5/16-18 x 5/8
0220	1729576	2	Bolt-Shldr 5/16-18 1.15Lg .50Sh .19L G5
0240	1739016	1	POD, RH
0250	1960536	6	SCREW, Hex Washr Head, 1/4 x 1/2
0270	1731310A	1	SUPPORT, Seat Deck
0300	1931334	2	BOLT, Carriage, 5/16-18 x 7/8, G5
0310	1754213	1	SEAT, 15" Back
0400	1722302	1	GRIP, Handle
0410	1751599	1	CANISTER, Carbon, 300cc
0420	1751715	1	HOSE, Vapor, 5mm
0430	1751519BM	1	BRACKET, Canister Mounting
0440	1701011	2	TIE, Self Locking, 15"
0450	1753994	1	DECAL, EVAP

# Steering Group

Note: Unless noted otherwise, use the standard torque specifications

Mfg. No: 2691022-01



## Steering Group

REF NO	PART NO	QTY	DESCRIPTION
0010	1727813SM	1	SHAFT, Steering Gear & Spline, Yellow
0020	703151	2	WASHER, .766 ID X 1.06 OD X .07, Flat, Zinc/Clear
0030	1729665SM	2	BUSHING, Steering, 3/4 ID
0040	1728069SM	1	STEERING WHEEL, Aluminum Insert -(42" & 46" Models Only)
0040	7078088YP	1	STEERING WHEEL, UV-2 -(52" Models Only)
0050	1960576SM	1	NUT, 5/8-18, Hex Lock, Thin ESNA Light, Black
0060	1725024SM	1	CAP, Steering Wheel, Plain
0140	1611710SM	1	RING-Klip, .750 Dia. Shaft, .062 Thk., Ext., Blk
0150	703949	4	SCREW, 5/16-18 X .625, Hex Washer Head, Thread Roll, Zinc/Clear
0160	885530AYP	1	TOWER, Steering

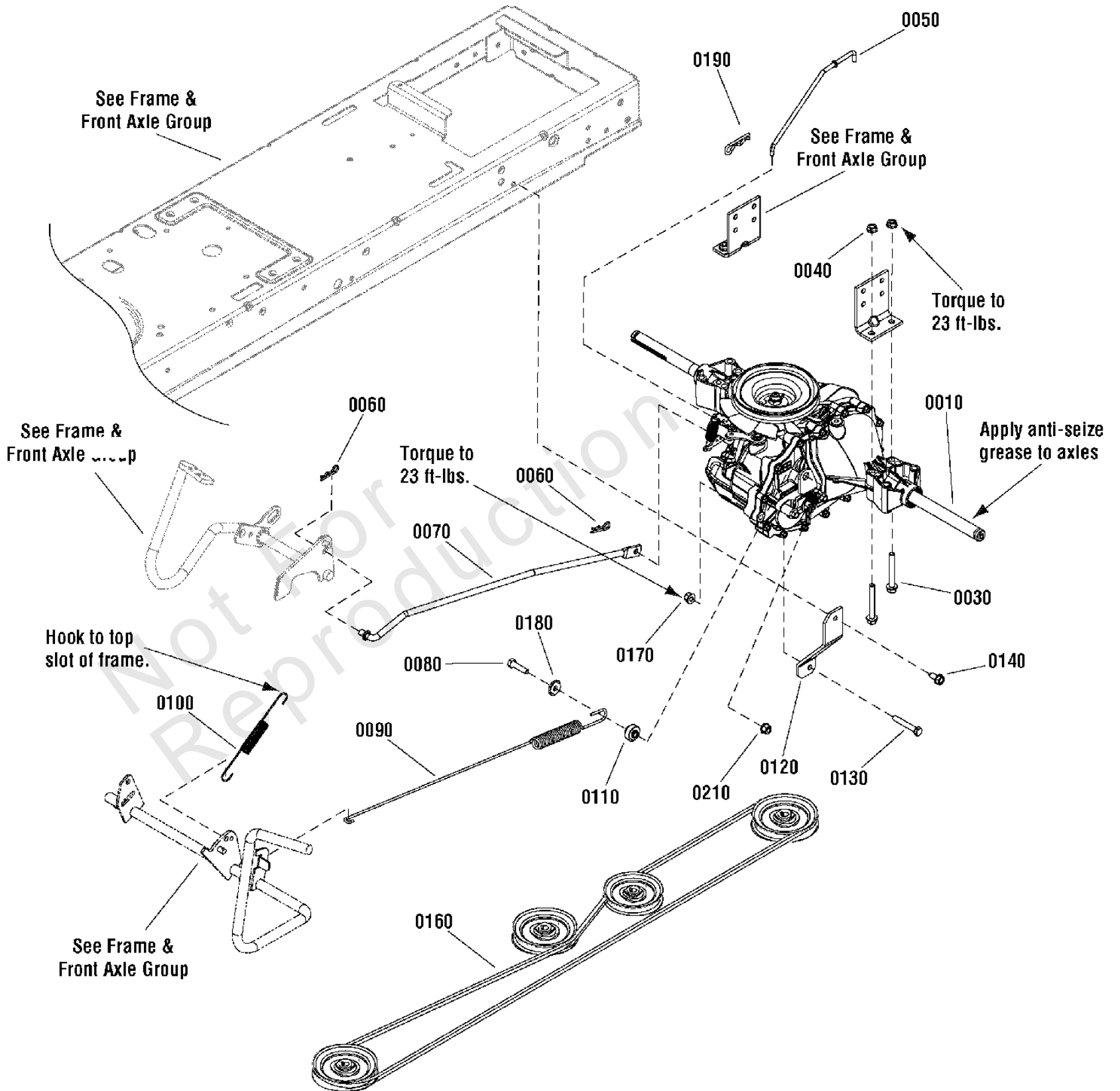
Not For  
Reproduction

# Transmission Group - Hydro Gear T2-CCHE-4X3B-1LX1

Note: Unless noted otherwise, use the standard torque specifications

Mfg. No: 2691022-01

2988052



## Transmission Group - Hydro Gear T2-CCHE-4X3B-1LX1

REF NO	PART NO	QTY	DESCRIPTION
0010	1736637YP	1	* TRANSMISSION, Hydro Gear, T2-HP
0030	1960586SM	4	SCREW, 5/16-18 x 2-1/2, Hex Flange Whiz Lock, Black
0040	703409	4	NUT, 5/16-18, Serrated Lock Flange, GR5
0050	1736716YP	1	ROD, Free Wheel
0060	703430	2	HAIRPIN, Quick, .080 Wire, 1.19LG, Zinc/Clear
0070	1750545YP	1	ROD, Speed Control, T2-HP
0080	703570	1	SCREW, 5/16-18 X 1.25, Torx Pan Head, GR 5, Zinc/Clear
0090	1736409YP	1	SPRING, Extension, 21.9" LG, .81 OD, .140 Wire
0100	1721995SM	1	SPRING, Extension, .62 OD, 6.62" LG, .071 Wire, BLK
0110	1736854YP	1	SPACER, .33 ID, 1.0 OD, .660 THK, Two Step
0120	1736410AYP	1	STRAP, Torque
0130	703867	1	SCREW, 5/16-18 X 2.0, Hex Head Cap, GR 5, Zinc/Clear
0140	703228	1	SCREW, 5/16-18 X .750, Washer Head Taptite
0160	1737441YP	1	V-BELT, Drive Belt, HA, 88.46
0170	703115	1	NUT, Flange Nylock, 5/16-18
0180	703298	1	WASHER, 5/16 (.34 ID X 1" OD X .13 THK) GR5, Zinc/Clear
0190	1960221SM	1	CLIP, Hair Pin, 5/8 Dia. x 1-5/16 Lg
0210	720145	1	NUT, Hex Center Lock, 5/16-18

Not For  
Reproduction

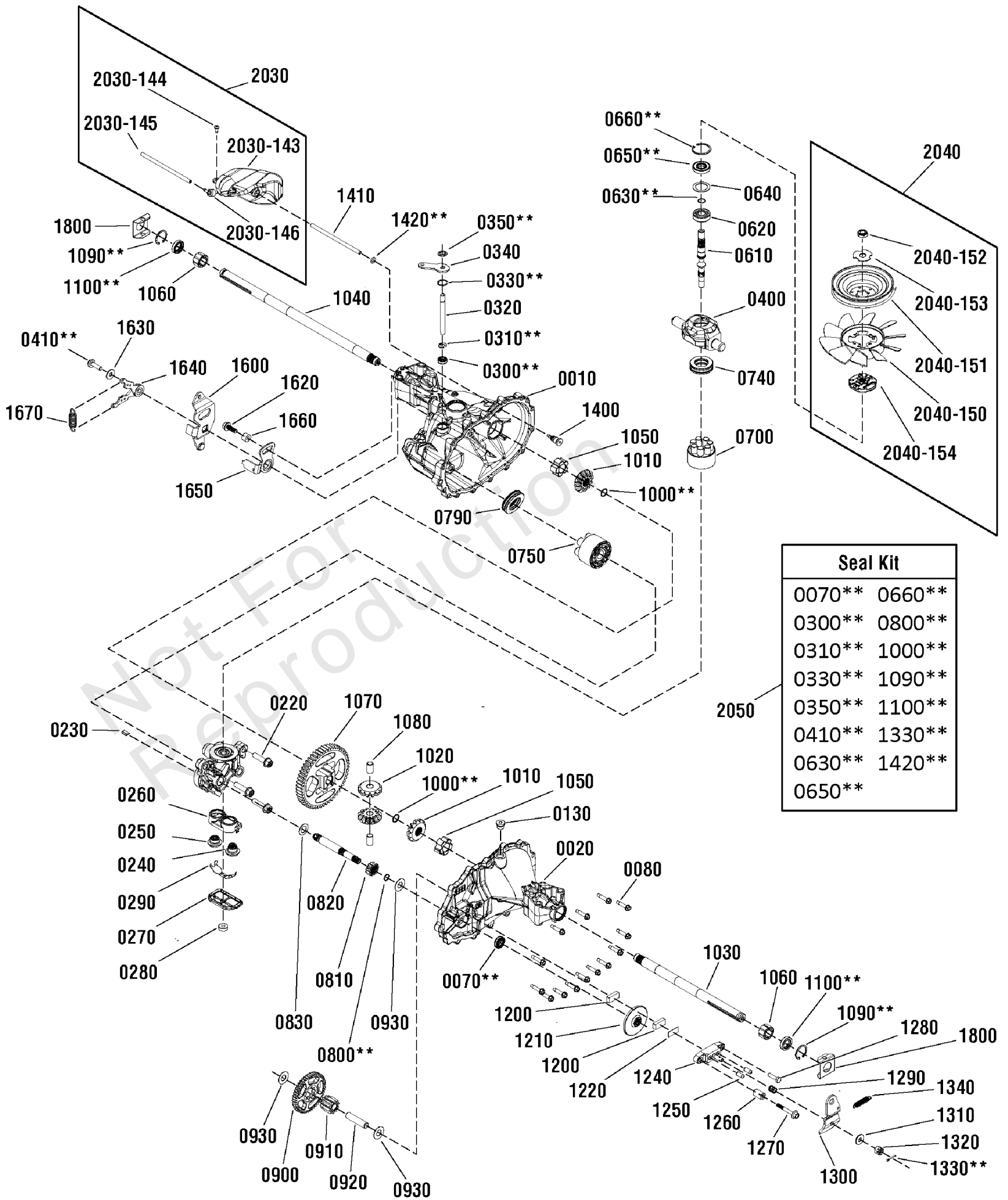
### Footnotes:

\*Note: See your local authorized dealership for parts and warranty.

# Transmission SERVICE PARTS - Hydro-Gear T2-CCHE-4X3B-1LX1

Note: Unless noted otherwise, use the standard torque specifications

Mfg. No: 2691022-01





## Transmission SERVICE PARTS - Hydro-Gear T2-CCHE-4X3B-1LX1

REF NO	PART NO	QTY	DESCRIPTION
0010		1	* MAIN HOUSING
0020		1	* SIDE HOUSING
0070		1	** SEAL, Lip, 1/2 x 1 x 1/4
0080		14	* SCREW, Hex Washer, 1/4-20 x 1-1/8
0130		1	* PLUG, 9/16-18
0210		1	* BEARING, Journal
0220		3	* BOLT, Hex Flange, 3/8-16
0230		1	* PLATE, Bypass
0240		1	* CHECK PLUG & WASHER ASSEMBLY, .027
0250		1	* CHECK PLUG & WASHER ASSEMBLY
0260		1	* BASE, Filter
0270		1	* COVER, Filter
0280		1	* RING, Magnet
0290		1	* DEFLECTOR
0300		1	** SEAL, Lip, 3/8 x 3/4 x 1/4
0310		1	** RING, Retainer, 3/8
0320		1	* ROD, Actuator Bypass
0330		1	** RING, Retainer, 3/4
0340		1	* ARM, Bypass
0350		1	** RING, Retainer, 3/8
0400		1	* TRUNNION, Swash Plate
0410		1	** SCREW, 5/16-18 x 1
0610	1752308YP	1	SHAFT INPUT HYDRO GEAR # 52462
0620	1715142SM	1	BALL BEARING, 15 x 35 x 11
0630	1715141SM	1	** RING, Retaining Wire, .512 ID
0640	1706172SM	1	* WASHER, Spacer, 1-15/64 x 9/16
0650	1706173SM	1	** SEAL, Lip, 15 x 35 x 7
0660		1	** RING, Retainer, 1-9/16, INT
0700		1	* KIT, Block, 7 Piston, 8cc
0740		1	* BEARING, Thrust Ball, 27 x 47 x 14
0750		1	* PISTON BLOCK ASSEMBLY
0790	1715144	1	BEARING, Thrust Ball, 30 x 52 x 13
0800		1	** RING, Retainer, 1/2, EXT
0810		1	* GEAR, 13T Pinion
0820		1	* SHAFT, Motor
0830		1	* WASHER, .60 x 1
0900		1	* GEAR, 10T / 48T
0910		1	* GEAR, Jackshaft, 10T
0920		1	* JACKSHAFT, Pin
0930	1715169SM	3	WASHER, 7/16 x 1 x 1/2
1000		2	** RING, Retainer, Spiral, 5/8, EXT
1010		2	* GEAR, Bevel, 12T, Spline OD
1020		2	* GEAR, Bevel, 12T, 1/2 OD
1030		1	* SHAFT, Axle, Keyed, 12-9/64 x 3/4
1040		1	* SHAFT, Axle, Keyed, 17-3/4 x 3/4
1050		2	* BUSHING, Inboard
1060		2	* BUSHING, Outboard
1070		1	* GEAR, 54T, Bull

### Footnotes:

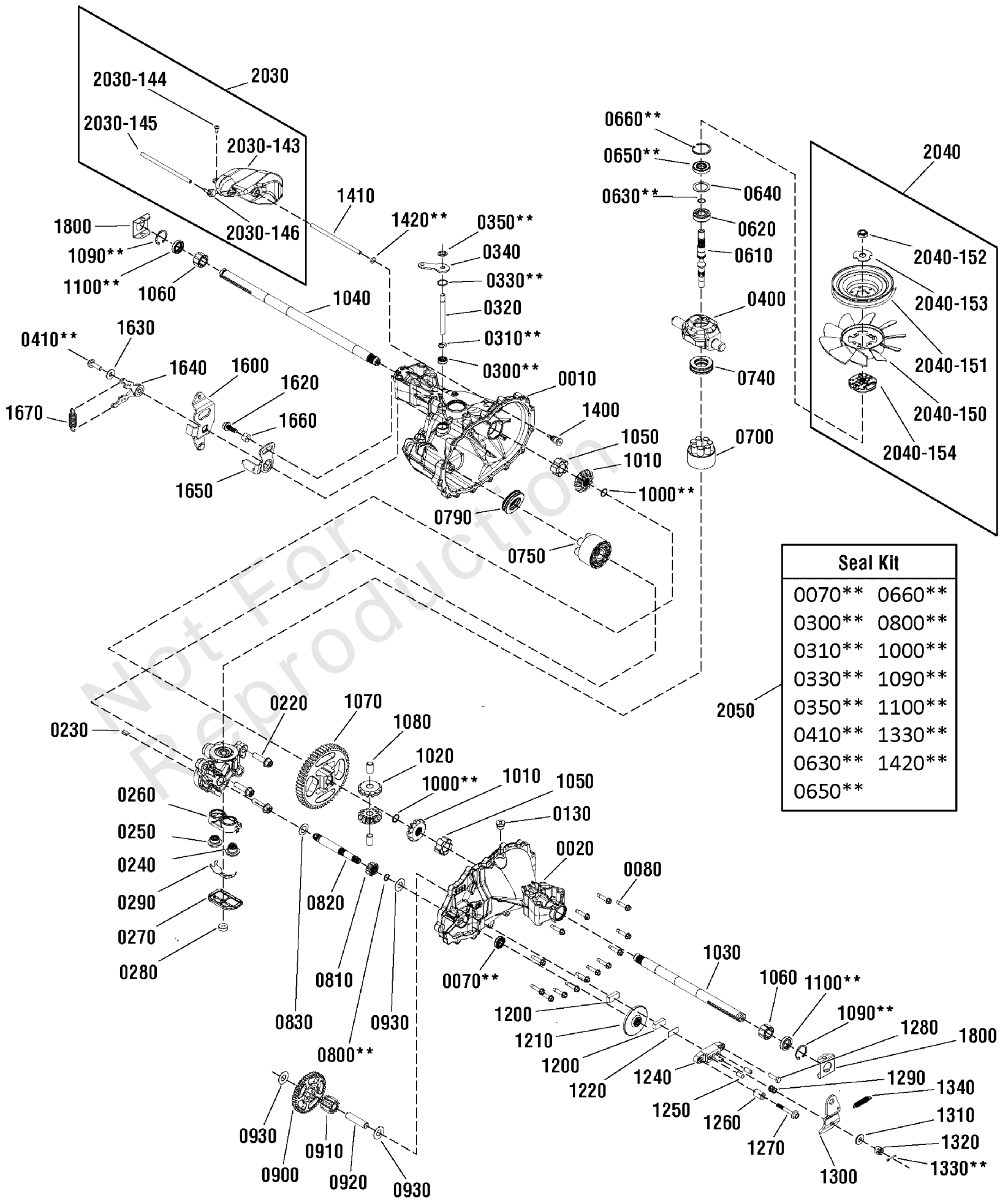
Note\*\* Not a serviceable part, order seal kit, ref # 2050

Note\* See your local authorized dealership for parts and warranty or contact Hydro Gear at [www.hydro-gear.com/Support/NorthAmerica.aspx](http://www.hydro-gear.com/Support/NorthAmerica.aspx) (U.S. 1-877-728-7410 Int'l 32 (0) 12 670 631)

# Transmission SERVICE PARTS - Hydro-Gear T2-CCHE-4X3B-1LX1

Note: Unless noted otherwise, use the standard torque specifications

Mfg. No: 2691022-01



## Transmission SERVICE PARTS - Hydro-Gear T2-CCHE-4X3B-1LX1

REF NO	PART NO	QTY	DESCRIPTION
1080		2	* PIN, Differential
1090		2	** RING, Retainer, INT, Axle
1100		3	** SEAL, Lip, 3/4 x 1-1/8 x 1/4
1200	1706146SM	2	PUCK, Brake
1210		1	* ROTOR, Brake
1220	1706145SM	1	PLATE, Brake Puck
1240		1	* YOKE, Brake
1250	1706141SM	2	PIN, Brake, 5/16 x 3/4
1260	1715199SM	1	SPACER, Brake Torsion Spring, 1/4 x 9/16
1270		1	* SCREW, Patch, 1/4-20 x 2
1280	1706147SM	1	SCREW, 1/4-20 x 1, W/Patch
1290		1	* SPRING, Compression, Brake, Anti-Drag
1300		1	* ARM, Brake
1310		1	* WASHER, 11/32 x 7/8
1320	1714431SM	1	NUT, 5/16-24, Hex Castle
1330		1	** PIN, Cotter, 3/32 x 3/4
1340		1	* SPRING, Brake Arm
1400		1	* FITTING, Hydraulic, O-Ring Adapter, 5/16
1410		1	* HOSE
1420		1	** O-Ring, .103 x .299 ID
1600		1	* ARM, Control
1620		1	* BOLT, Hex Flange Head
1630		1	* WASHER, 11/32 x 7/8 (Duplicate of #131)
1640		1	* ROTATION ASSEMBLY
1650		1	* NEUTRAL ARM ASSEMBLY
1660		1	* BUSHING
1670		1	* SPRING, Extension
1800	1752309YP	2	CLIP, Spring, Housing Thrust
2030	1752310YP	1	KIT, E-Tank -(Includes ref # 2030-143, 2030-144, 2030-145 & 2030-146)
2030-143		1	TANK EXPANSION -(Not a serviceable part, order kit #2030)
2030-144		1	BOLT, 10-32 x 1/2 -(Not a serviceable part, order kit #2030)
2030-145		1	TUBE -(Not a serviceable part, order kit #2030)
2030-146		1	CAP, Barbed Vent -(Not a serviceable part, order kit #2030)
2040	1752311YP	1	FAN & PULLEY KIT -(Includes ref # 2040-150, 2040-151, 2040-152, 2040-153 & 2040-154)
2040-150		1	* FAN, 7", 10 Blade -(Not a serviceable part, order kit #2040)
2040-151		1	* PULLEY, 4.4" -(Not a serviceable part, order kit #2040)
2040-152		1	* NUT, Nylock, 1/2-20 -(Not a serviceable part, order kit #2040)
2040-153		1	* WASHER, OD Slotted -(Not a serviceable part, order kit #2040)
2040-154		1	* HUB, Pulley, 1-9/16 -(Not a serviceable part, order kit #2040)
2050	1752312YP	1	SEAL KIT -(Includes items marked with **)

### Footnotes:

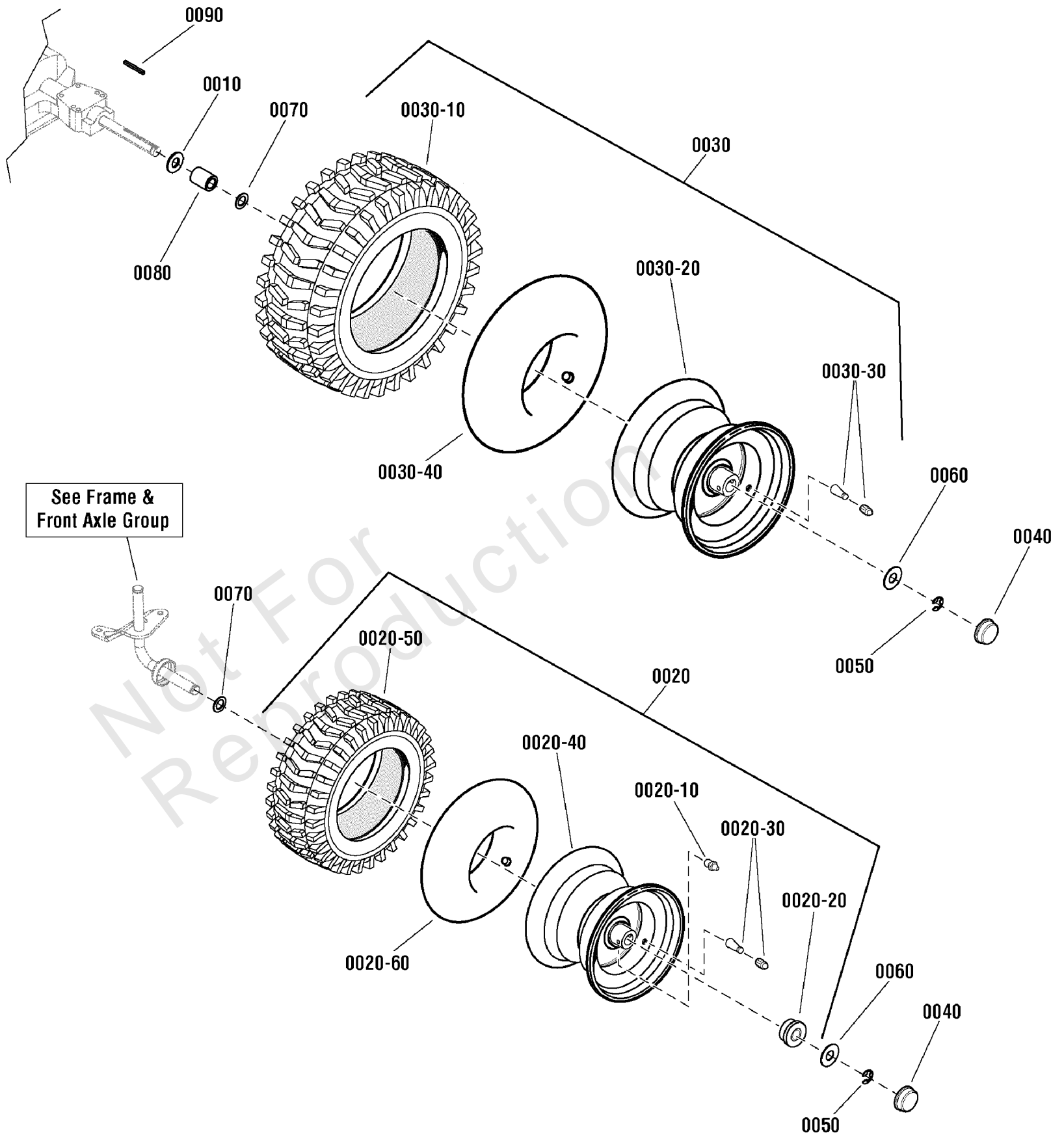
Note\*\* Not a serviceable part, order seal kit, ref # 2050

Note\* See your local authorized dealership for parts and warranty or contact Hydro Gear at [www.hydro-gear.com/Support/NorthAmerica.aspx](http://www.hydro-gear.com/Support/NorthAmerica.aspx) (U.S. 1-877-728-7410 Int'l 32 (0) 12 670 631)

# Wheels & Tires Group

Note: Unless noted otherwise, use the standard torque specifications

Mfg. No: 2691022-01



## Wheels & Tires Group

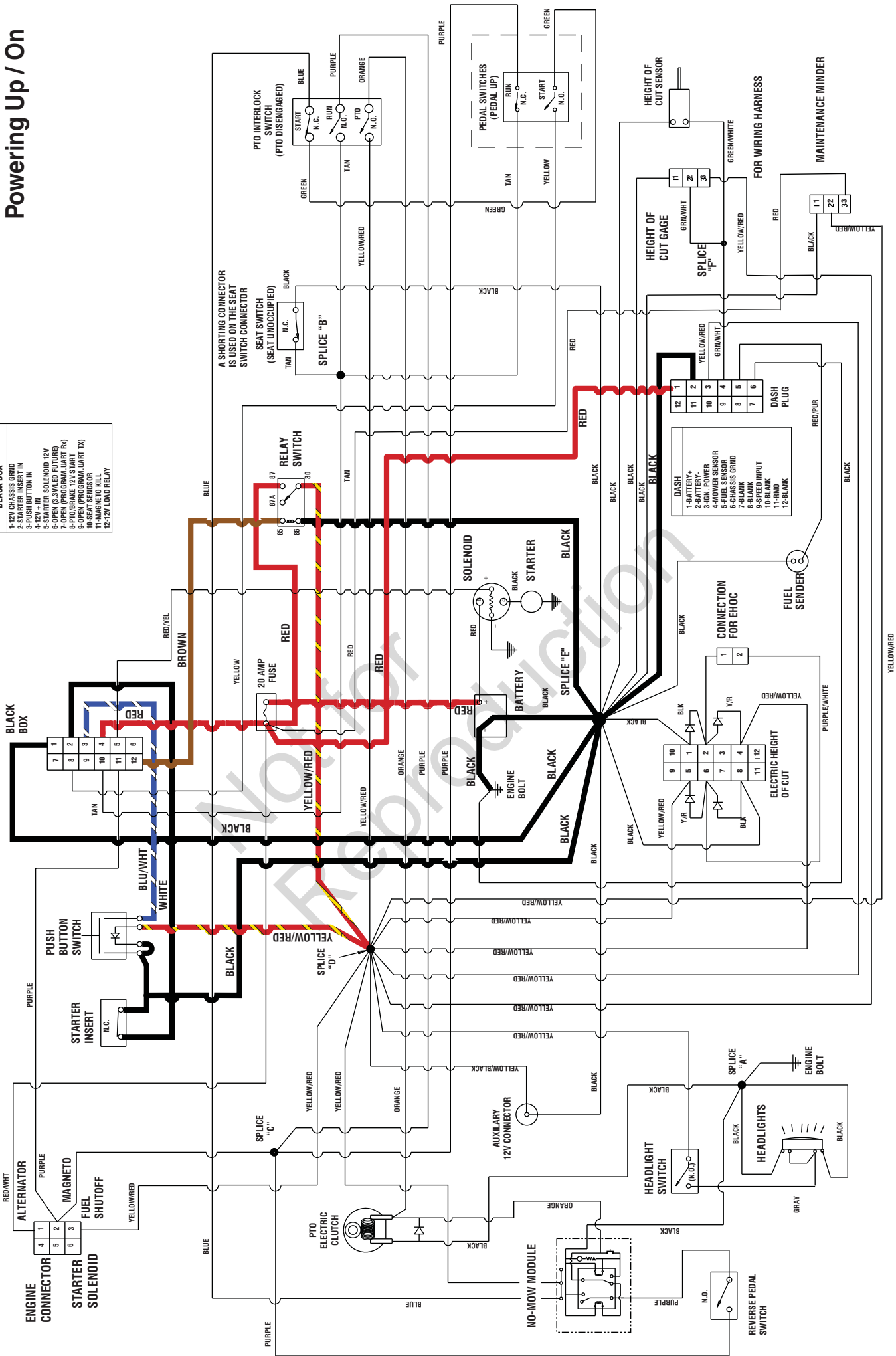
REF NO	PART NO	QTY	DESCRIPTION
0010	2860202SM	2	WASHER, 3/4 x 1-5/8 OD x 1/8 Thick
0020	1729708SM	2	WHEEL & TIRE ASSEMBLY, Front 15" X 6.00-6 K358 Tread
0020-10	2812808SM	1	FITTING, Lube, .250-28 Taper Thread
0020-20	1752171YP	2	BUSHING, Flanged, 3/4" ID x 1.380" OD, Front Wheels (2Per Wheel)
0020-30	2172353SM	1	VALVE STEM & CAP, Air .453 Dia 0.88 Long
0020-40		1	WHEEL & BUSHINGS ASSEMBLY, Front
0020-50	1731951SM	1	TIRE, 15 X 6.00 - 6 Turf Rider, Kenda
0020-60	1664090SM	2	TUBE, Tire, 4.10/3.50-6
0030	7101569YP	2	WHEEL & TIRE ASSEMBLY, 22 X 9.5-12 -(52" Models Only)
0030	7101563YP	2	WHEEL & TIRE ASSEMBLY, 20 x 10.0-8 -(42", 46" & 48" Models)
0030	7101560YP	2	WHEEL & TIRE ASSEMBLY, 20 x 8.0-8 -(42" Models Only)
0030-10	7101568YP	2	TIRE, 22 x 9.50-12, 2 Ply K358 -(52" Models Only)
0030-10	7101562YP	2	TIRE, 20 x 10-8, 2 Ply K358 -(42", 46" & 48" Models)
0030-10	7101559YP	2	TIRE, Turf 20 X 8.00 - 8 K358 2Ply Tubeless -(42" Models Only)
0030-20		2	RIM -(All Models)
0030-30	2172353SM	2	VALVE STEM & CAP, Air .453 Dia 0.88 Long -(All Models)
0030-40	2173477SM	2	TUBE, Tire, 20 X 8.00 -10 -(52" Models Only)
0030-40	2164247SM	2	TUBE, Tire, 16 X 6.50 - 8 -(42" & 46" Models Only)
0040	094618MA	4	HUB CAP
0050	0011X3MA	4	E-RING, .750 ID, .050 Thk
0060	17X195MA	4	WASHER, .765 ID, 1.8 OD, .0598 Thk, Flat ZP
0070	17X160MA	4	WASHER, .76 X 1.25 X 16 GA, Flat
0080	1730181SM	2	SPACER, 0.77 ID x 1-1/4 OD x 1.65 LG PM, Black
0090	021553MA	2	KEY, Square, 3/16 x 3/16 x 2

### Footnotes:

Note\* Not a serviceable part, service wheel complete

# Powering Up / On

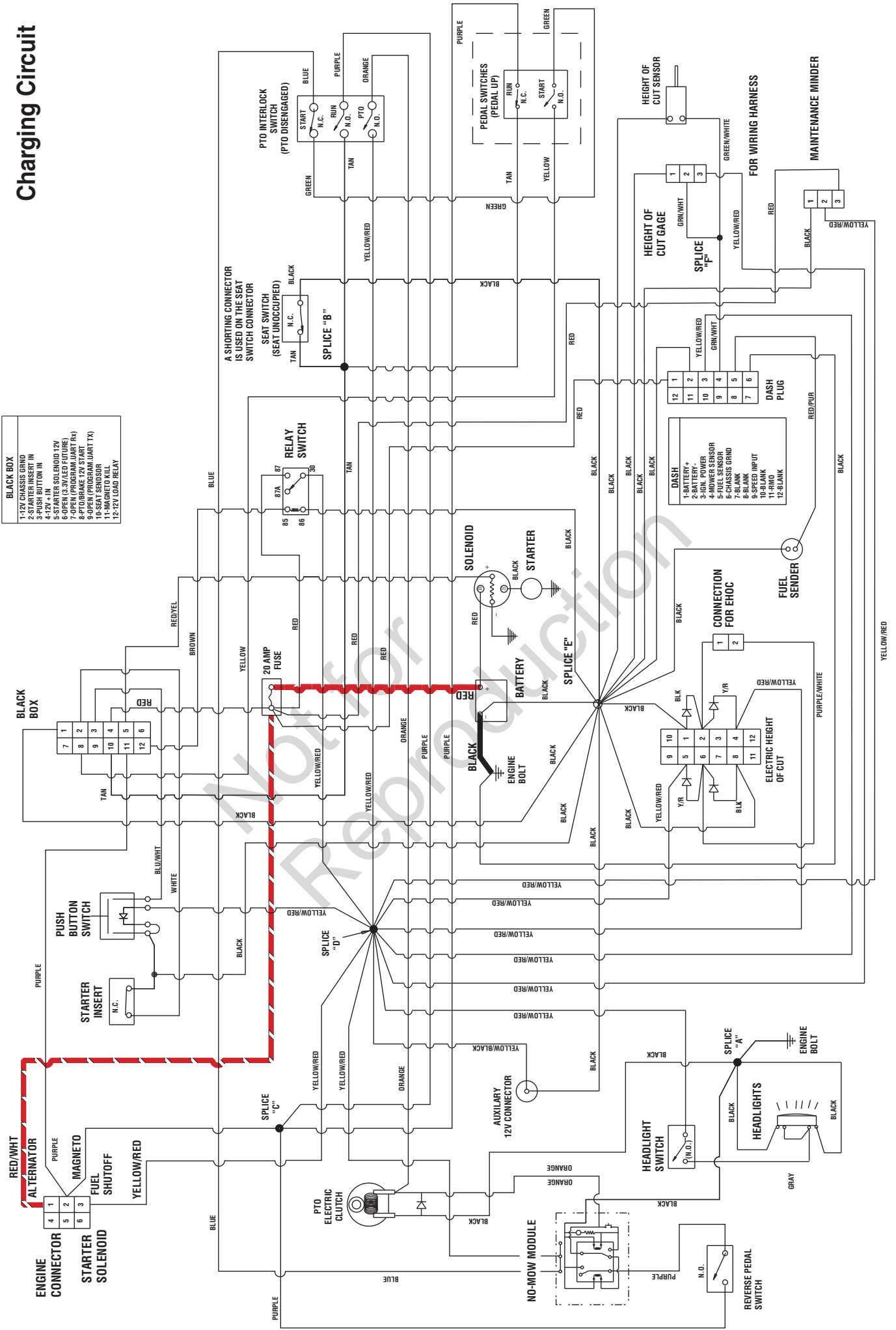
- BLACK BOX**
- 1-12V CHASSIS GROUND
  - 2-STARTER INSERT IN
  - 3-PUSH BUTTON IN
  - 4-STARTER SOLENOID 12V
  - 5-STARTER SOLENOID 12V
  - 6-OPEN (3.3V LED FUTURE)
  - 7-OPEN (PROGRAM WART RA)
  - 8-PTO/BRAKE 12V START
  - 9-SEAT SENSOR (WART TX)
  - 10-SEAT SENSOR
  - 11-MAGNETO KILL
  - 12-12V LOAD RELAY



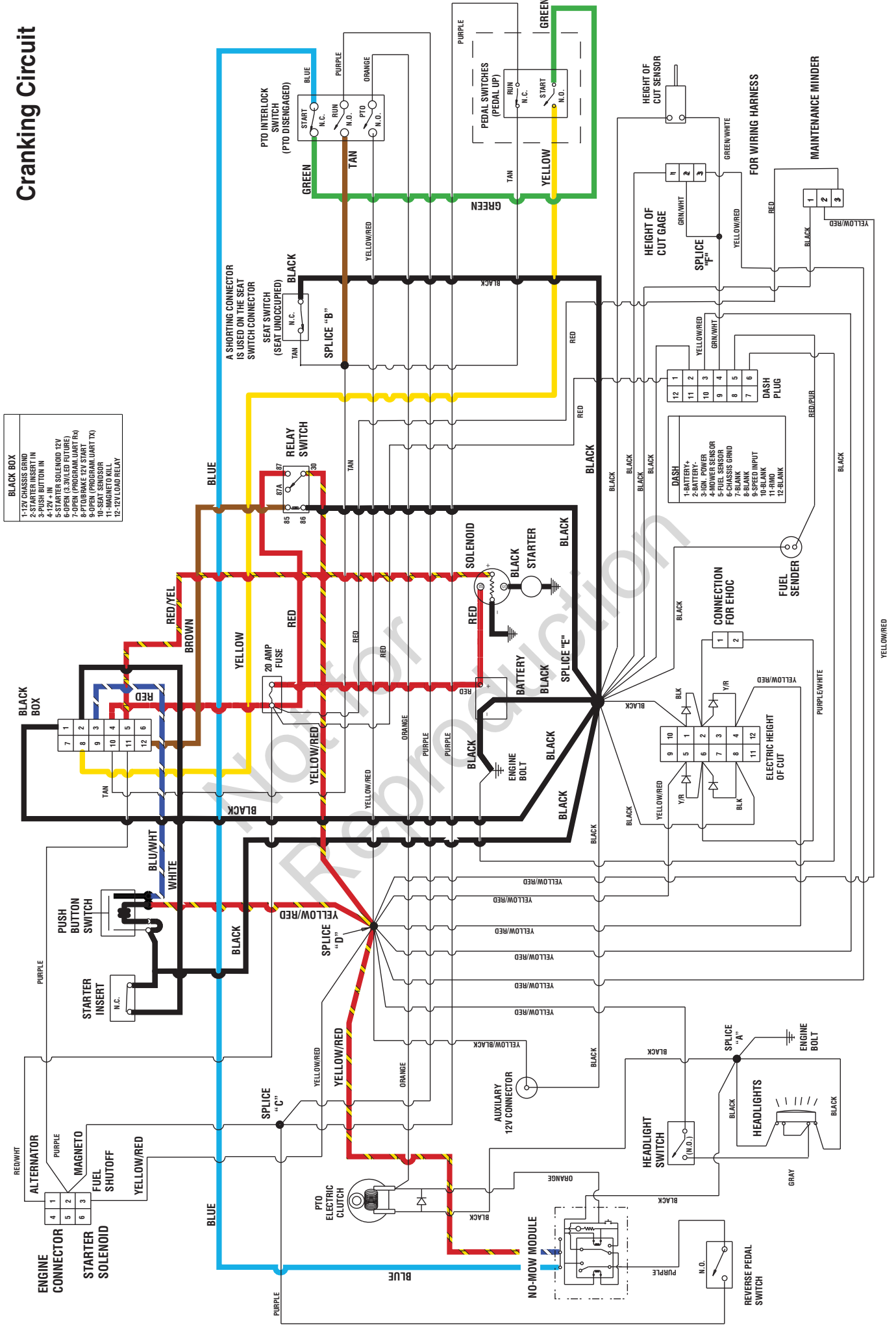
# Charging Circuit

**BLACK BOX**

- 1-12V CHASSIS GRND
- 2-STARTER INSERT IN
- 3-PTO MOTOR IN
- 4-12V BATTERY IN
- 5-STARTER SOLENOID 12V
- 6-OPEN (3.3V/LED FUTURE)
- 7-OPEN (PROGRAM JUART Rx)
- 8-PTO BRAKE 12V START
- 9-PTO BRAKE 12V START
- 10-SEAT SENSOR
- 11-MAGNETO KILL
- 12-12V LOAD RELAY



# Cranking Circuit

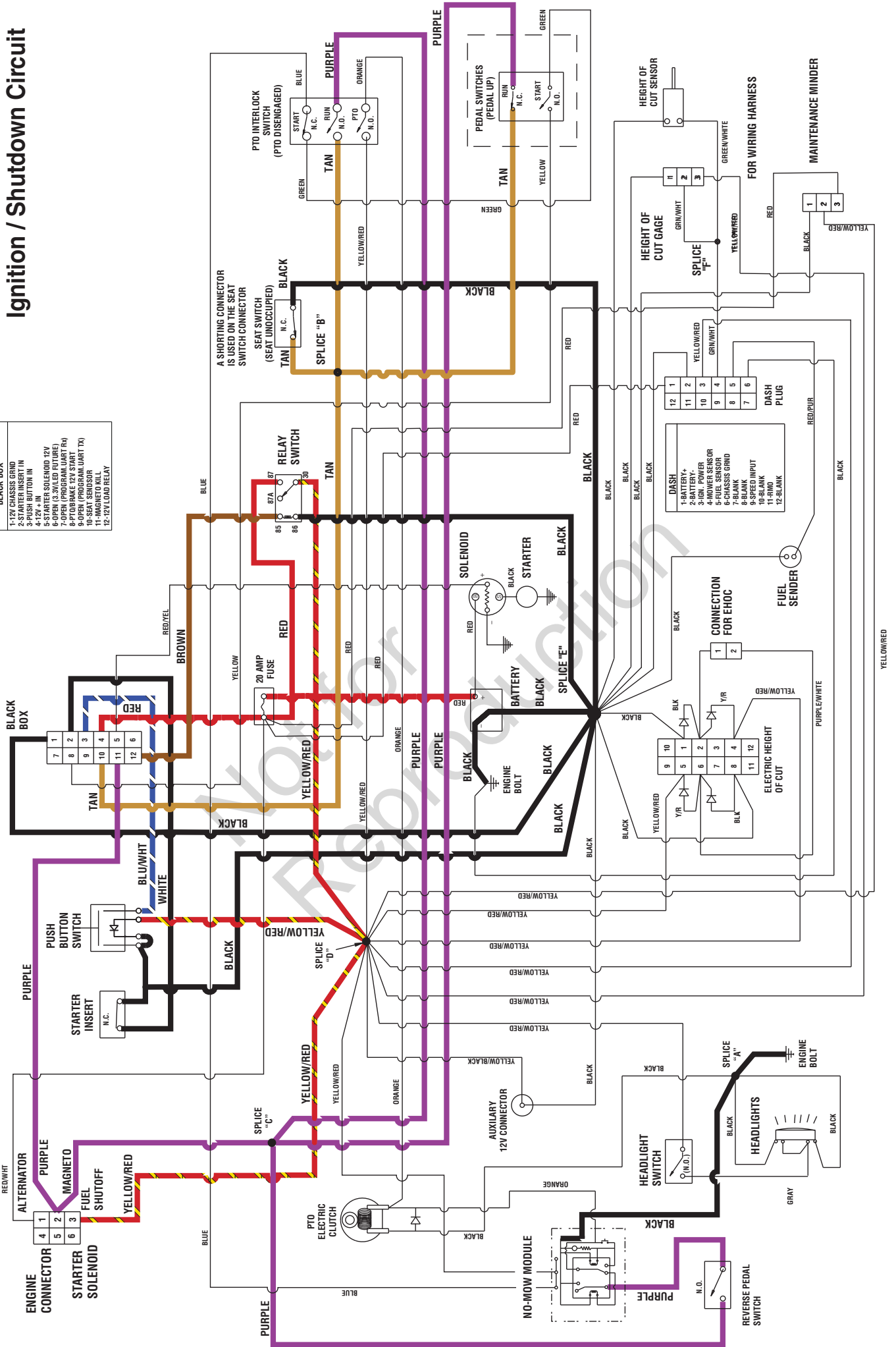




# Ignition / Shutdown Circuit

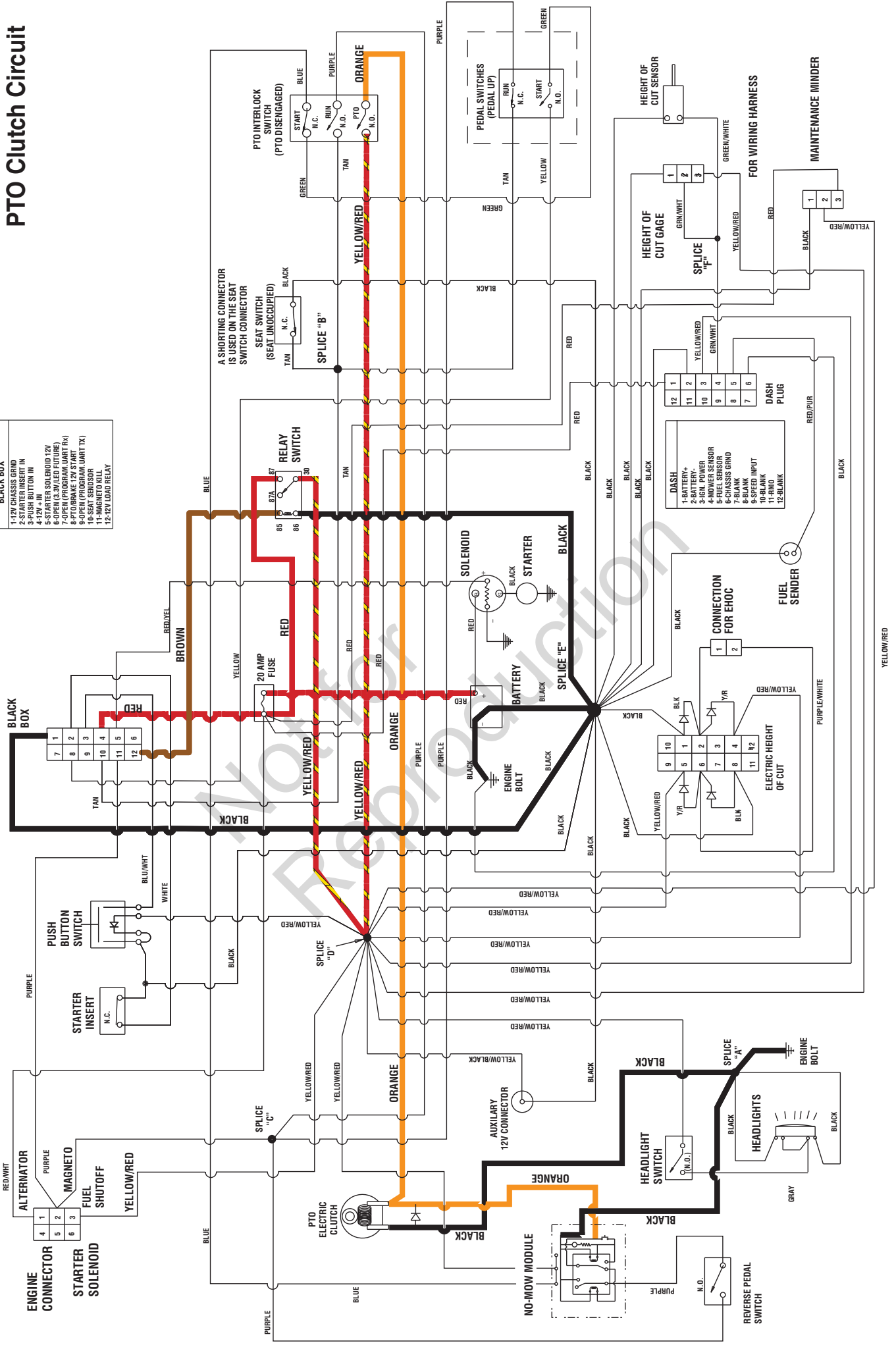
**BLACK BOX**

- 1-12V CHASSIS GND
- 2-STARTER INSERT IN
- 3-IGN. BUTTON IN
- 4-IGN. BUTTON OUT
- 5-STARTER SOLENOID 12V
- 6-OPEN (3.3V/LED FUTURE)
- 7-OPEN (PROGRAM/LIART RA)
- 8-PROGRAM 12V START
- 9-SEAT SENSOR (WHT TX)
- 10-SEAT SENSOR
- 11-MAGNETO KILL
- 12-12V LOAD RELAY



# PTO Clutch Circuit

- BLACK BOX**
- 1-12V CHASSIS GRND
  - 2-STARTER INSERT IN
  - 3-PUSH BUTTON IN
  - 4-STARTER INSERT OUT
  - 5-STARTER SOLENOID 12V
  - 6-OPEN (3.3V/LED FUTURE)
  - 7-OPEN (PROGRAM/LIART R+)
  - 8-PTO BRAKE 12V START
  - 9-PTO BRAKE 12V STOP
  - 10-SEAT SENSOR
  - 11-MAGNETO KILL
  - 12-12V LOAD RELAY

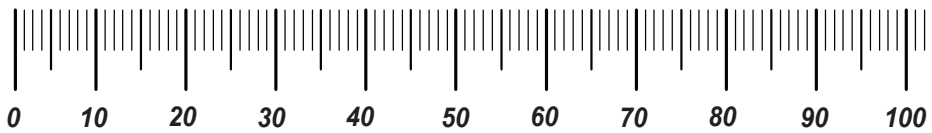


# Hardware Identification & Torque Specifications

Torque Specification Chart								
FOR STANDARD METRIC MACHINE HARDWARE (Tolerance ± 20%)								
Property Class	5.6		8.8		10.9		12.9	
	Class 5.6		Class 8.8		Class 10.9		Class 12.9	
Size Of Hardware	in/lbs	Nm.	in/lbs	Nm.	in/lbs	Nm.	in/lbs	Nm.
	ft/lbs		ft/lbs		ft/lbs		ft/lbs	
M3	5.88	.56	13.44	1.28	19.2	1.80	22.92	2.15
M4	13.44	1.28	30.72	2.90	43.44	4.10	52.56	4.95
M5	26.4	2.50	60.96	5.75	5.97	8.10	7.15	9.7
M6	44.64	4.3	7.3	9.9	10.3	14	12.1	16.5
M7	5.2	7.1	12.1	16.5	16.9	23	19.9	27
M8	7.7	10.5	17.7	24	25	34	29	40
M10	15	21	35	48	50	67	59	81
M12	26	36	61	83	86.2	117	103	140
M14	42	58	101	132	136	185	162	220
M16	64	88	147	200	210	285	250	340
M18	89	121	202	275	287	390	346	470
M20	126	171	290	390	405	550	486	660
M22	169	230	390	530	559	745	656	890
M24	217	295	497	375	708	960	840	1140
M27	320	435	733	995	1032	1400	1239	1680
M30	435	590	995	1350	1401	1900	1681	2280
M33	590	800	1349	1830	1902	2580	2278	3090
M36	759	1030	1740	2360	2441	3310	2935	3980
M39	988	1340	2249	3050	3163	4290	3798	5150

Torque Specification Chart						
FOR STANDARD MACHINE HARDWARE (Tolerance ± 20%)						
Hardware Grade	No Marks		SAE Grade 5		SAE Grade 8	
	SAE Grade 2		SAE Grade 5		SAE Grade 8	
Size Of Hardware	in/lbs	Nm.	in/lbs	Nm.	in/lbs	Nm.
	ft/lbs		ft/lbs		ft/lbs	
8-32	19	2.1	30	3.4	41	4.6
8-36	20	2.3	31	3.5	43	4.9
10-24	27	3.1	43	4.9	60	6.8
10-32	31	3.5	49	5.5	68	7.7
1/4-20	66	7.6	8	10.9	12	16.3
1/4-28	76	8.6	10	13.6	14	19.0
5/16-18	11	15.0	17	23.1	25	34.0
5/16-24	12	16.3	19	25.8	29	34.0
3/8-16	20	27.2	30	40.8	45	61.2
3/8-24	23	31.3	35	47.6	50	68.0
7/16-14	30	40.8	50	68.0	70	95.2
7/16-20	35	47.6	55	74.8	80	108.8
1/2-13	50	68.0	75	102.0	110	149.6
1/2-20	55	74.8	90	122.4	120	163.2
9/16-12	65	88.4	110	149.6	150	204.0
9/16-18	75	102.0	120	163.2	170	231.2
5/8-11	90	122.4	150	204.0	220	299.2
5/8-18	100	136	180	244.8	240	326.4
3/4-10	160	217.6	260	353.6	386	525.0
3/4-16	180	244.8	300	408.0	420	571.2
7/8-9	140	190.4	400	544.0	600	816.0
7/8-14	155	210.8	440	598.4	660	897.6
1-8	220	299.2	580	788.8	900	1,244.0
1-12	240	326.4	640	870.4	1,000	1,360.0

The guides and ruler furnished below are designed to help you select the appropriate hardware.

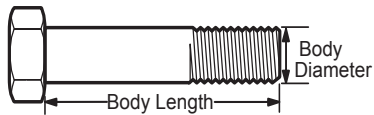


Nut, M8

Thread Diameter (mm)

Inside Diameter (in)      Threads per inch

Nut, 1/2-16

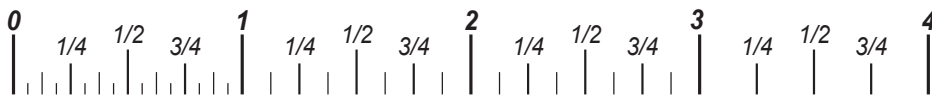


Screw, M8- 1.25 x 25

Thread Diameter (mm)      Distance between threads (mm)      Body Length (mm)

Body Diameter      Threads per inch      Body Length (in)

Screw, 1/2- 16 x 2



## Standard Hardware Sizing

When a washer or nut is identified as 1/2" (M8), this is the *Nominal size*, meaning the *inside diameter* is 1/2 inch (8mm metric thread diameter); if a second number is present it represents the *threads per inch* (distance between threads).

When bolt or capscrew is identified as 1/2 - 16 x 2" (M8 - 1.25 x 50), this means the *Nominal size*, or body diameter is 1/2 inch (8mm metric thread diameter), the second number, 16, represents the *threads per inch*, (*distance between threads*). The final number is the body length of the bolt or screw, 2 inches (50mm).

## NOTES

- These torque values are to be used for all hardware excluding: locknuts, self-tapping screws, thread forming screws, sheet metal screws and socket head setscrews.
- Recommended seating torque values for locknuts:
  - for prevailing torque locknuts - use 65% of grade 5 torques.
  - for flange whizlock nuts and screws - use 135% of grade 5 torques.
- Unless otherwise noted on assembly drawings, all torque values must meet this specification.

## Common Hardware Types

Hex Head Capscrew



Washer



Carriage Bolt



Hex Nut

## Wrench & Fastener Size Guide

1/4" Bolt or Nut Wrench—7/16"	5/16" Bolt or Nut Wrench—1/2"	3/8" Bolt or Nut Wrench—9/16"	7/16" Bolt or Nut Wrench (Bolt)—5/8" Wrench (Nut)—11/16"	1/2" Bolt or Nut Wrench—3/4"
M6 Bolt or Nut Wrench—10mm	M8 Bolt or Nut Wrench—13mm	M10 Bolt or Nut Wrench—17mm	M12 Bolt or Nut Wrench—19mm	M14 Bolt or Nut Wrench—22mm

