



Parts Manual

Mfg. No: 2690800
Coronet, 13.5HP Hydro RMO and 30"

1692125 - Cart, Dump (10 Cu. Ft.).....
1692149 - Catcher, Clean Sweep Twin, 30".....
1694946 - Counter Weight Kit.....

Not For
Reproduction

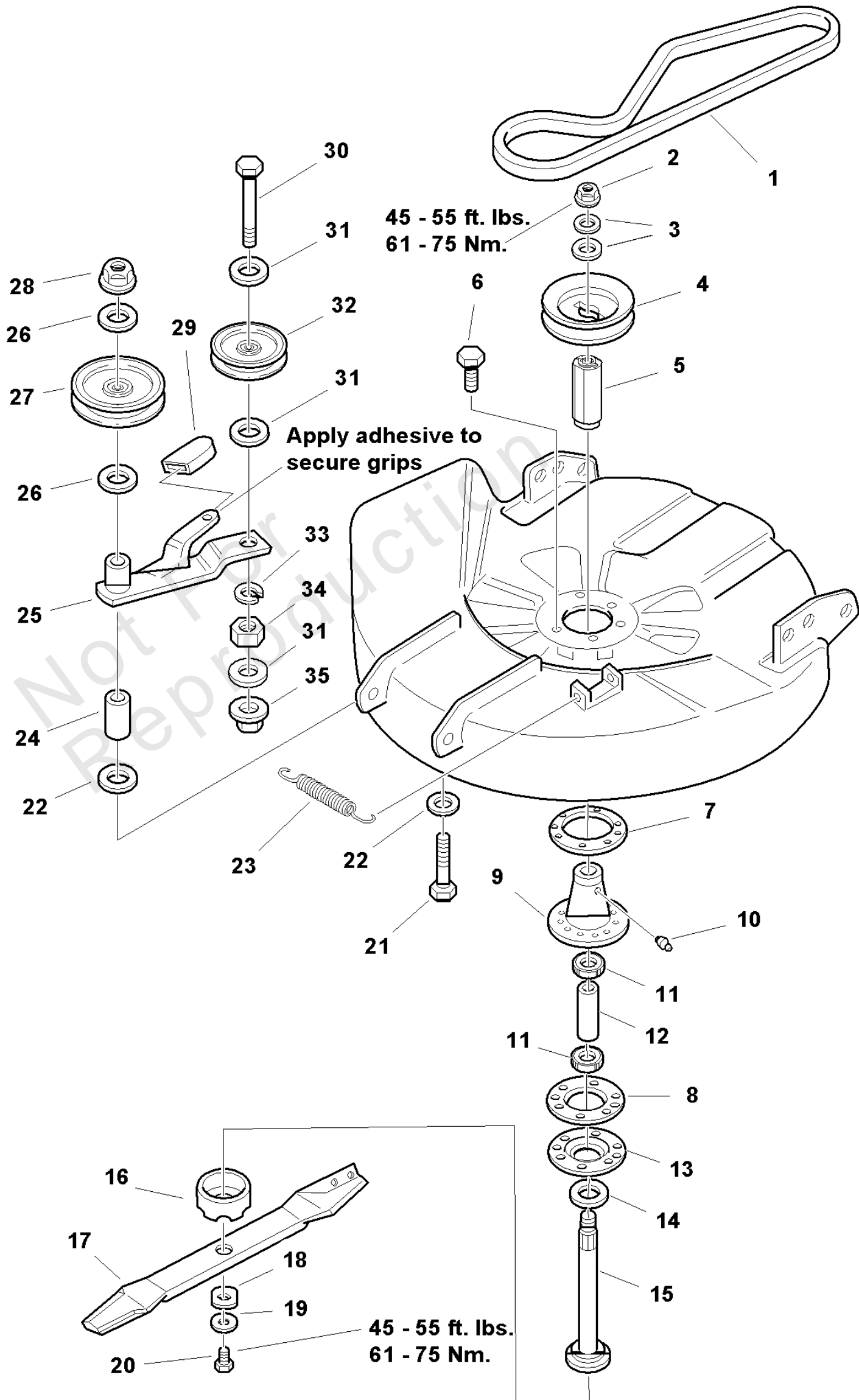
Model Components	Page
30" Mower Deck - Drive & Arbor.....	4
30" Mower Deck - Housing, Hitch & Height Adjustment.....	6
Decals Group - Brand & Model.....	8
Decals Group - Common & Safety.....	10
Electrical Group.....	12
Engine Group.....	14
Frame & Fuel System Group.....	16
Front Column & Dash Group.....	20
Steering & Lift Group.....	22
Transmission Group - Hydro-Gear 340-0510.....	24
Transmission SERVICE PARTS - Hydro-Gear 340-0510 (1725620).....	28
Wheels & Tires Group.....	34
Torque Specification Chart.....	36

Not For
Reproduction

30" Mower Deck - Drive & Arbor

Note: Unless noted otherwise, use the standard torque specifications

Mfg. No: 2690800



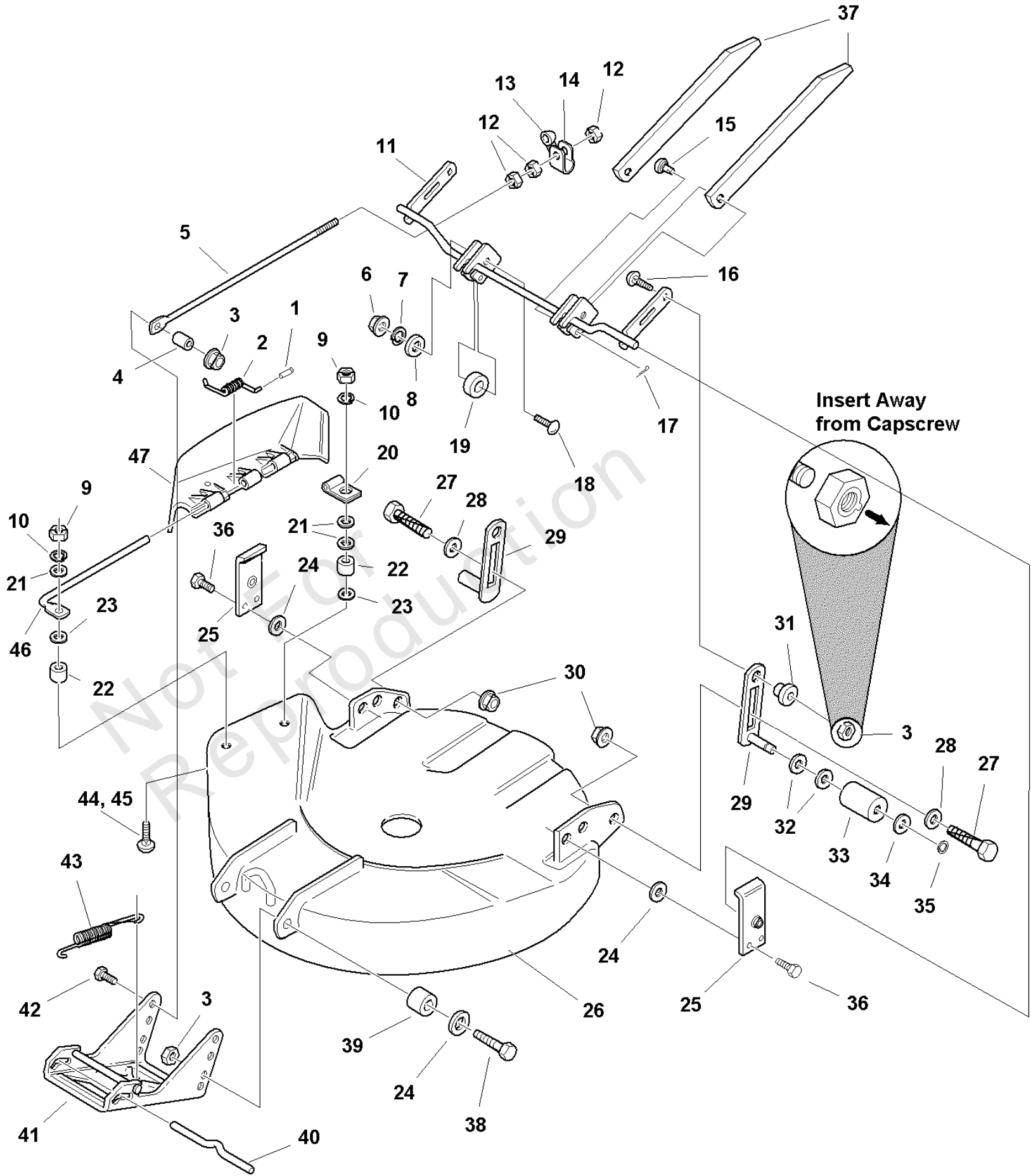
30" Mower Deck - Drive & Arbor

REF NO	PART NO	QTY	DESCRIPTION
1	1719746SM	1	V-BELT
2	1714419SM	1	NUT, Hex Flange, 9/16-18
3	1713675SM	2	WASHER, Belleville
4	1713092SM	1	PULLEY
5	1713613SM	1	HUB, Pulley, 1-3/16
6	1960373SM	6	CAPSCREW, Hex Head, Taptite, 5/16-18 x 1
7	1677274ASM	1	ADAPTER, Arbor
8	1707335SM	1	GASKET, Foam
9	1713338ASM	1	HOUSING ASSEMBLY, Arbor Bottom, w/Lube Fitting -(Includes Ref. No. 10)
10	1704314SM	1	FITTING, Grease
11	1705897SM	2	BEARING
12	1732543SM	1	SPACER
13	1713199ASM	1	COVER, Arbor Housing
14	1713619SM	1	WASHER, Cupped
15	1713609SM	1	SHAFT, Arbor, 5-53/64"
16	1713196SM	1	SHIELD, Grass, Lower
17	1664019ASM	1	BLADE, Mower, 30"
18	1713089SM	1	WASHER, Hex
19	1656916SM	1	WASHER, Spring
20	2823471SM	1	CAPSCREW, Hex Head, 7/16-14 x 1, GR 8
21	1923903SM	1	CAPSCREW, Hex Head, 3/8-16 x 3
22	1924356SM	2	WASHER, Flat, 3/8 x 1-1/2 x 1/8
23	1715435SM	1	SPRING
24	1669105SM	1	SPACER
25	1708562SM	1	LEVER ASSEMBLY
26	1924940SM	2	WASHER, Plain, 3/8
27	1707435SM	1	PULLEY ASSEMBLY Idler, Fixed, 6" Dia.
28	1928352SM	1	NUT, Hex, Whizlock, 3/8-16
29	1708966SM	1	GRIP, Lever
30	1923701SM	1	CAPSCREW, Hex Head, 3/8-16 x 2
31	1922755SM	3	WASHER, 13/32 x 1 x 1/8
32	1704926SM	1	IDLER PULLEY, Backside
33	1916965SM	1	LOCKWASHER, 3/8
34	1916950SM	1	NUT, Hex, 3/8
35	1928731SM	1	NUT, Hex, Lock, 3/8-16

30" Mower Deck - Housing, Hitch & Height Adjustment

Note: Unless noted otherwise, use the standard torque specifications

Mfg. No: 2690800



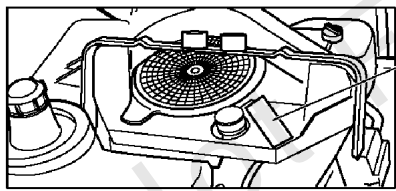
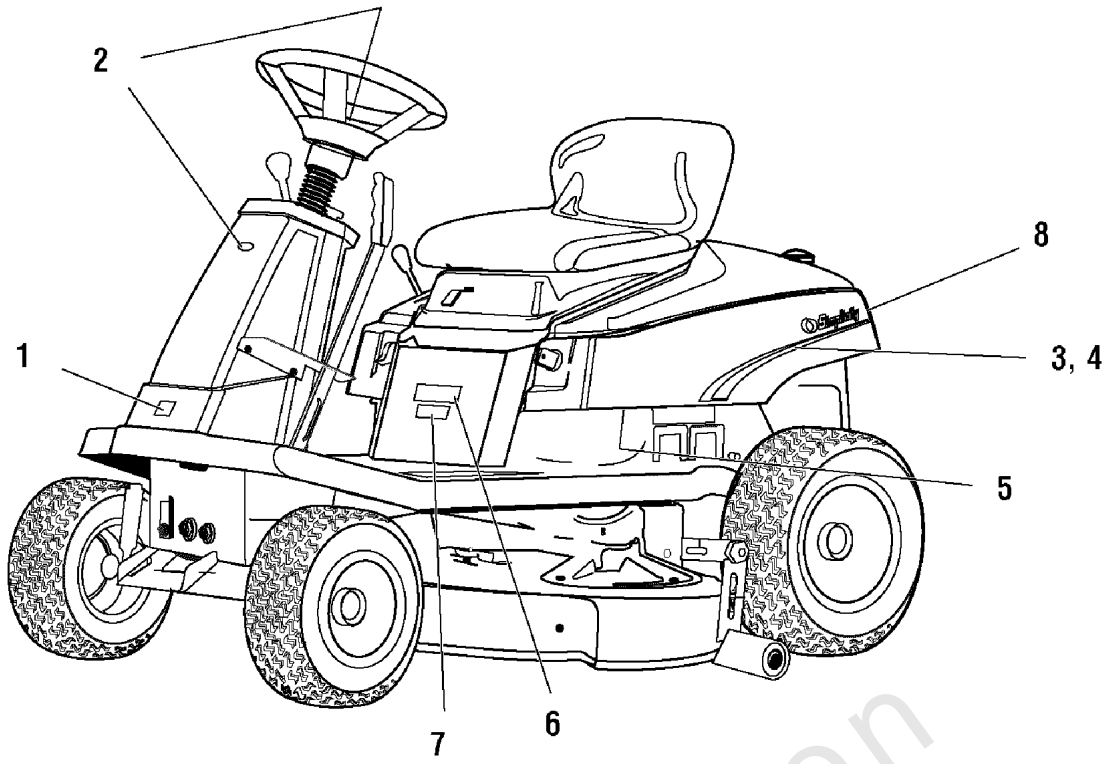
30" Mower Deck - Housing, Hitch & Height Adjustment

REF NO	PART NO	QTY	DESCRIPTION
1	1723323SM	1	CAP, Spring End
2	7101082SM	1	SPRING, Torsion
3	2860681SM	5	NUT, Hex Flange, 3/8-16
4	1611705SM	1	SPACER
5	1707300SM	1	ROD, Adjustment
6	1917372SM	2	NUT, Hex, 5/16-18
7	1917356SM	2	LOCKWASHER, 5/16
8	1919326SM	2	WASHER, 5/16
9	1920397SM	2	NUT, Hex, 1/4-20 ESNA
11	1707540ASM	1	ARM ASSEMBLY, Mower
12	1913744SM	3	NUT, Hex Jam, 1/2-13
13	1671260SM	1	SPACER
14	1707280ASM	1	TRUNNION
15	1733568SM	2	PIN, Locking
16	1931352SM	2	BOLT, Carriage, Short Neck, 3/8-16 x 1-1/2
17	1960074SM	2	PIN, Retaining
18	1960223SM	2	BOLT, Carriage, 5/16-18 x 1 1/4
19	1704716SM	2	SPACER
20	1704873SM	1	CLAMP, Wire, 5/16 Diameter
21	1921319SM	3	WASHER, Plain (1 Required for Export)
22	1700692SM	2	SPACER (Export)
23	1960518SM	2	PUSHNUT, 1/4
24	1924940SM	6	WASHER, Flat, 3/8
25	1708250ASM	2	PLATE, Pivot Support
26	1685670SM	1	HOUSING ASSEMBLY, 30" (Orange)
26	1687157SM	1	HOUSING ASSEMBLY, 30" (Red)
26	1687135SM	1	HOUSING ASSEMBLY, 30" (Black)
27	2172622SM	2	BOLT, Shoulder, 3/8-16 X 1.34, 1/2 Shoulder
28	1924361SM	2	WASHER, Flat
29	1708519ASM	2	SUPPORT ASSEMBLY, Roller
30	1928352SM	2	NUT, Hex, Flange, Whizlock, 3/8-16
31	1704082SM	2	NUT, Hex Adjusting, 11/16
32	1924366SM	4	WASHER, 5/8
33	1668487SM	2	ROLLER
34	1960020SM	2	WASHER, Plain, 21/32
35	2153124SM	2	RING, Retaining
36	1664847SM	4	CAPSCREW, Taptite, 5/16-18 x 3/4
37	1709209ASM	2	BAR, Mower Transport
38	1921968SM	2	CAPSCREW, Hex, 3/8-16 x 1-3/8
39	2157081SM	2	SPACER
40	1715759SM	1	ROD, 3/8 x 8
41	1707432ASM	1	HITCH ASSEMBLY
42	1921210SM	1	CAPSCREW, Hex Head, 3/8-16 x 1
43	2156302SM	1	SPRING, Extension
44	1931317SM	2	CARRIAGE BOLT, 1/4-20 x 3/4
45	1931320SM	2	CARRIAGE BOLT, 1/4-20 x 1-1/4 (Export)
46	1664947SM	1	ROD, Deflector
47	1705449SM	1	DEFLECTOR, Plastic

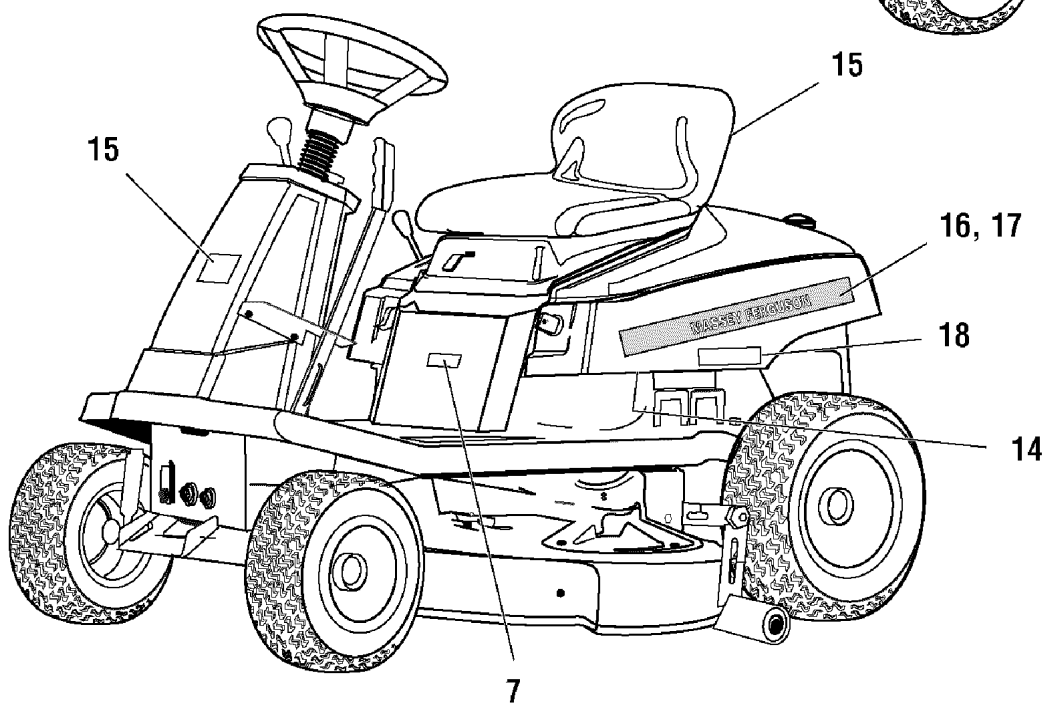
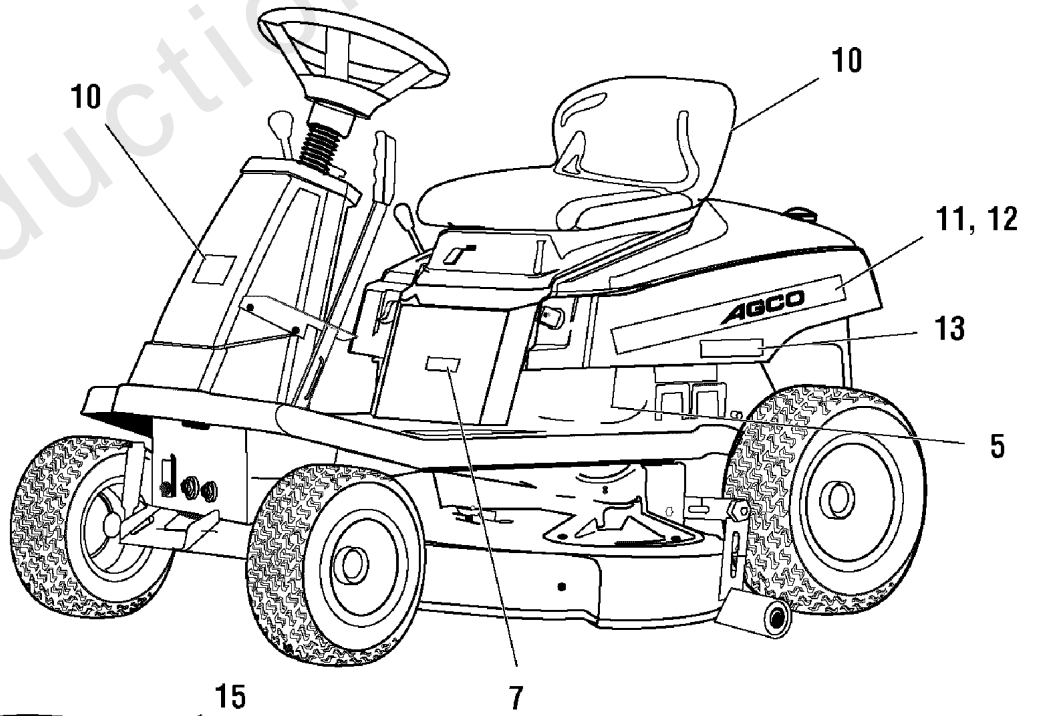
Decals Group - Brand & Model

Note: Unless noted otherwise, use the standard torque specifications

Mfg. No: 2690800



Air Duct behind engine.



Decals Group - Brand & Model

REF NO	PART NO	QTY	DESCRIPTION
1	-----	1	DECAL, CE, (Export Only)
2	1731418SM	2	DECAL, Icon, Simplicity
3	1722768SM	1	DECAL, Seat Deck, LH
4	1722767SM	1	DECAL, Seat Deck, RH
5	1720454SM	1	DECAL, Touch-up Paint, Deep Orange & Charcoal Gray
6	1722769SM	1	DECAL, "CORONET"
7	1722778SM	1	DECAL, 13 HP
7	1736253SM	1	DECAL, 13.5 HP
7	1722549SM	1	DECAL, 16 HP
8	1722551SM	2	DECAL, Simplicity
9	1724468SM	1	DECAL, Briggs & Stratton, 13 HP, INTEK
10	1708926SM	2	DECAL, Logo, AGCO
11	1722853SM	1	DECAL, Seat Deck AGCO, LH
12	1722854SM	1	DECAL, Seat Deck AGCO, RH
13	1722856SM	2	DECAL, Model, 413H
14	1725072SM	1	DECAL, Touch-up Pain, Red & Gray
15	1714363SM	2	DECAL, Logo, Massey Ferguson
16	1722851SM	1	DECAL, Seat Deck, LH
17	1722852SM	1	DECAL, Seat Deck, RH
18	1722859SM	2	DECAL, Model, 2413

Not For
Reproduction

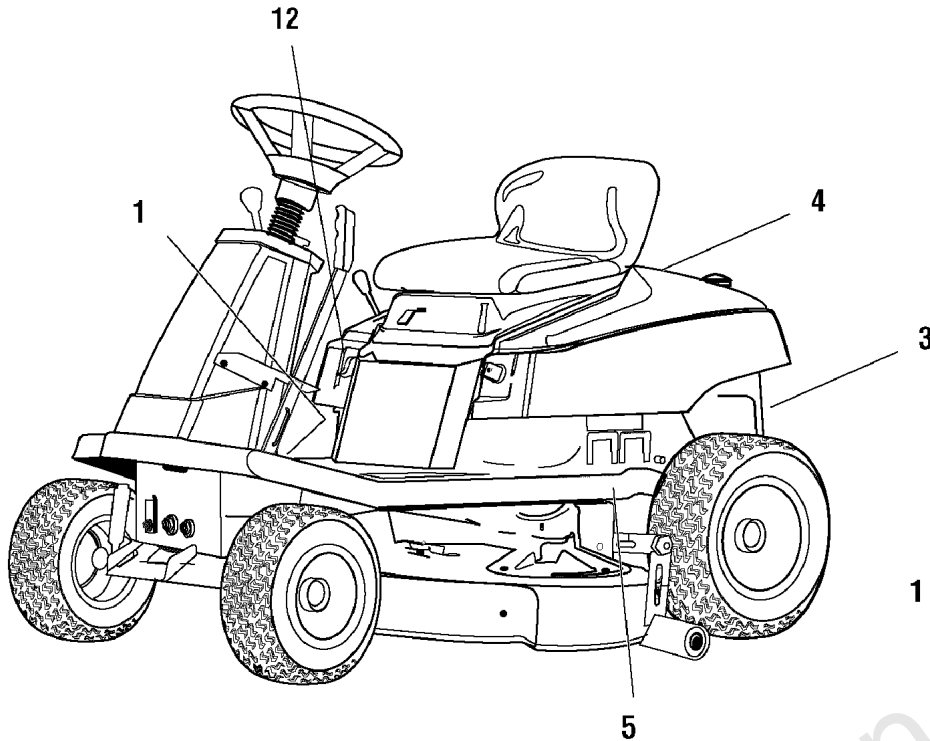
Footnotes:

Note:* Not a servicable part.

Decals Group - Common & Safety

Note: Unless noted otherwise, use the standard torque specifications

Mfg. No: 2690800



⚠ DANGER
ROTATING BLADES CUT OFF ARMS AND LEGS.
STOP MOWER WHEN CHILDREN ARE NEAR.
NO RIDERS - THEY FALL OFF.

⚠ DANGER
OPERATING ON BLADES CAN BE DANGEROUS.
SEE OPERATOR MANUAL.
IF YOU CANNOT BACK UP A HILL, DO NOT WORK ON IT.

⚠ WARNING
AVOID SERIOUS INJURY OR DEATH.
• READ OPERATOR MANUAL.
• KNOW LOCATION AND FUNCTION OF ALL CONTROLS.
• KEEP SAFETY SWITCHES (BRAKE, PTO, & SWITCHES) IN PLACE AND WORKING.
• REMOVED BLADES THAT COME IN CONTACT WITH THE BLADE.
• NEVER REAR END OTHERS OR OTHERS ARE AROUND.
• AVOID BUSHES/TURNS.
• IF YOU CANNOT BACK UP A HILL, DO NOT OPERATE ON IT.
• GO UP AND DOWN BLADES, NOT ACROSS.
• REMOVED STEPS SHOULD BE IN PLACE AND DOWN ONLY.
• USE BLUE BLADES AND BUSHES ARE STOPPED BEFORE PLACING HANDS OR FEET NEAR BLADES.
• WHEN LEAVING MOWER, SHUT OFF ENGINE, REMOVE KEY, AND SET PARKING BRAKE.

DO NOT TOW UNIT!
Damage may result to drive mechanism.

OPERATION

To Start Engine
! Seat must be occupied.
! Traction Lever must be in Neutral.
! Fully depress Clutch/Brake pedal.
! PTO switch must be off.

When Operator Leaves Seat
! Engine will shut off when Traction Lever is in Forward or Reverse, or when PTO switch is on.

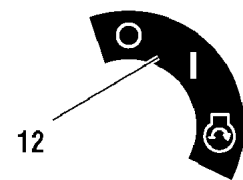
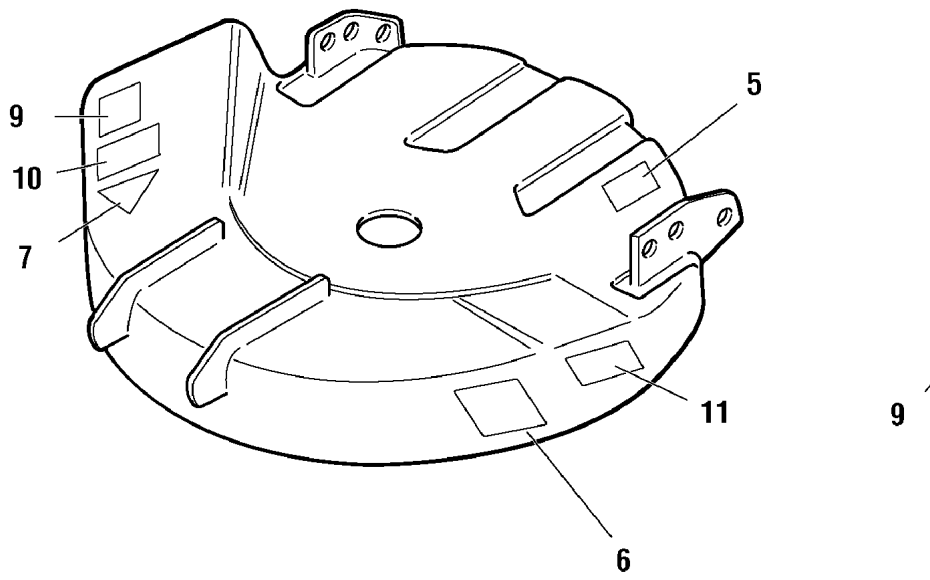
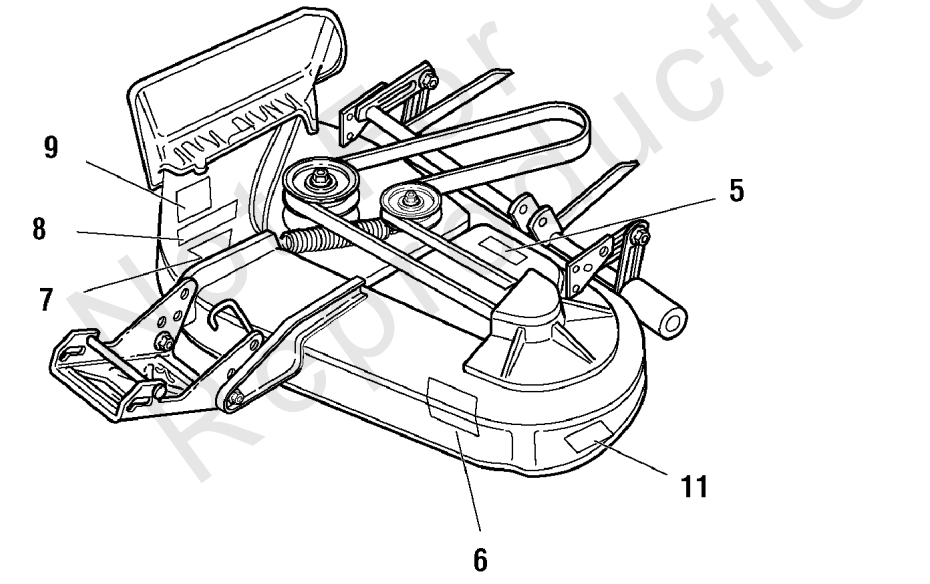
Traction Control
! To stop tractor motion, fully depress the Clutch/Brake pedal.
! On Hydrostatic drive riders, movement of Traction Lever from Neutral, in either direction, increases ground speed.

To Operate PTO clutch
! The operator must be in seat.
! To engage PTO, pull switch out.
! To disengage PTO, push PTO switch in.

Parking Brake
To Set Parking Brake
! Pull knob up while Clutch/Brake pedal is depressed.
! Release Clutch/Brake pedal while holding knob.
To Release Parking Brake
! Depress Clutch/Brake pedal.
! Push knob down while Clutch/Brake pedal is depressed.

Mower Height Adjust
! Push lever forward to raise mower deck up.
! Push lever back to lower mower deck.

RIDING MOWER DRIVE BELTS & MOWER BLADES	
Transmission Belt - GEAR	1877450
Transmission Belt - HYDRO	1705223
24" Mower Drive Belt	185200
24" Mower Drive Belt	1705737
24" Mower Drive Belt	1705736
24" Mower Drive Belt	185100
24" Mower Drive Belt	185101
24" Mower Drive Belt	1705735



3

7

8, 10

5

9

Decals Group - Common & Safety

REF NO	PART NO	QTY	DESCRIPTION
1	1726347SM	1	DECAL, Operating Instructions, English
1	1726336SM	1	DECAL, Operating Instructions, Export
3	1726341SM	1	DECAL, Transmission Release (Hydro models only)
4	1726335SM	1	DECAL, Belt & Blade Replacement
5	-----	1	I.D. PLATE (Not Serviced)
6	1704276SM	1	DECAL, Danger, Rotating Cutting Blade
7	-----	1	DECAL, OPEI, (Not Serviced)
8	1722786SM	1	DECAL, Cutting Width - 34", Silver on Black
9	1704277SM	1	DECAL, Danger, Chute In Place
10	1722785SM	1	DECAL, Cutting Width - 30", Silver on Black
11	1722771SM	1	DECAL, Free Floating Mower
12	1722806SM	1	DECAL, Ignition Switch Symbols, White on Black

Not For
Reproduction

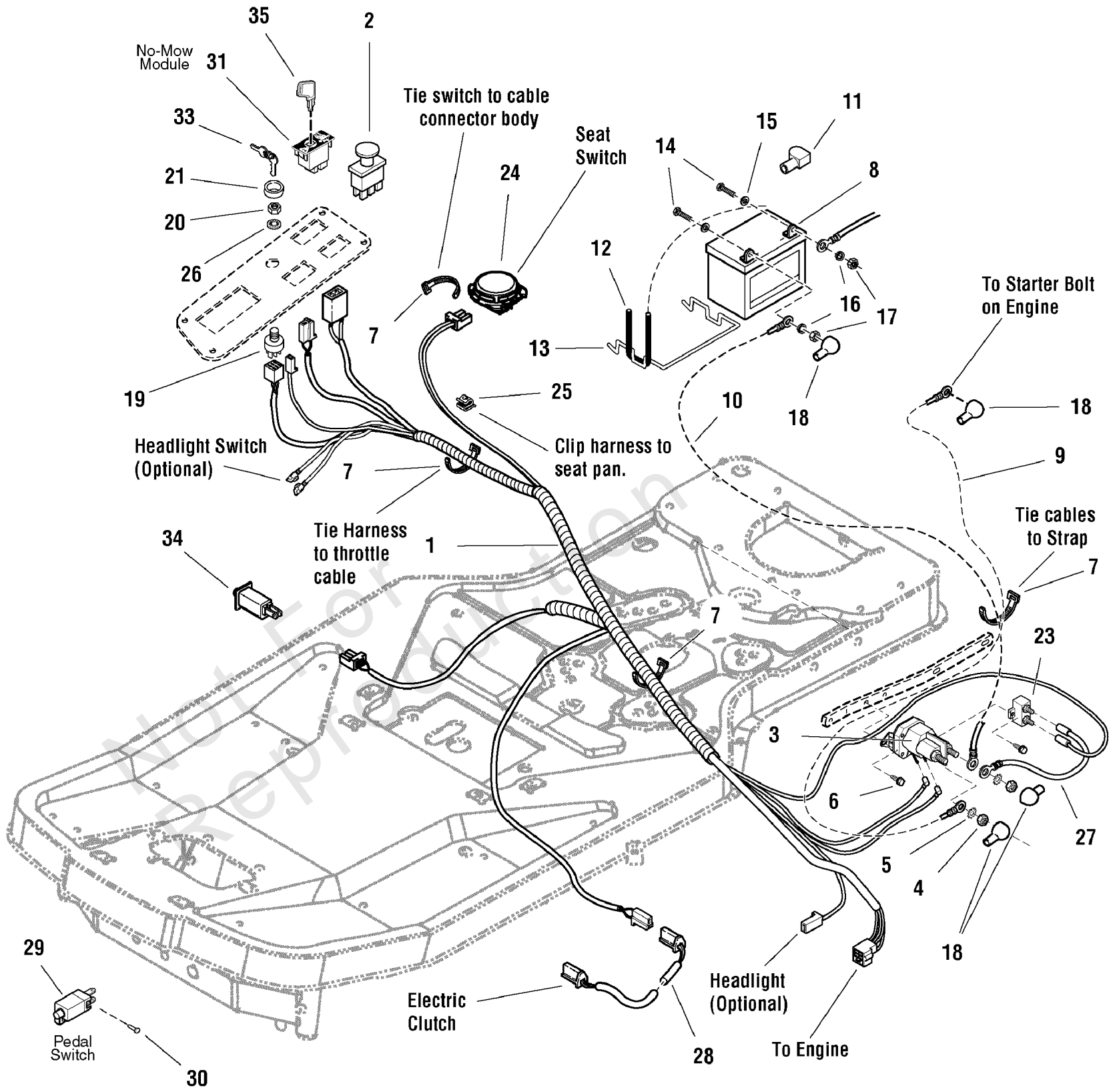
Footnotes:

Note:* Not a servicable part.

Electrical Group

Note: Unless noted otherwise, use the standard torque specifications

Mfg. No: 2690800



Electrical Group

REF NO	PART NO	QTY	DESCRIPTION
1	1736252YP	1	HARNESS, Wiring, Main
2	1722887SM	1	* SWITCH, PTO, Electric Clutch
3	1686981SM	1	SOLENOID, 4 Pole
4	2820263SM	2	NUT, Hex, 5/16-24
5	2820426SM	2	LOCKWASHER, 5/16
6	1925003SM	2	CAPSCREW, Hex Washer, Taptite, 1/4-20 x 1/2
7	1701011SM	2	TIE, Self-Locking
8	1685215SM	1	BATTERY
9	1709088SM	1	CABLE, Solenoid to Starter
10	1727668SM	3	CABLE, Battery to Solenoid, #6 x 15" Long
11	1677296SM	1	BOOT, Insulator
12	1665872SM	1	STRAP, Battery
13	1667805SM	1	BRACE, Battery
14	2823341SM	2	CAPSCREW, Hex Head, 1/4-20
15	2821319SM	2	WASHER, 1/4
16	2816964SM	2	LOCKWASHER, Spring, 1/4
17	2816622SM	2	NUT, Hex, 1/4-20
18	2122023SM	3	COVER, Terminal
19	1686734SM	1	IGNITION KEY SWITCH ASSEMBLY
20	1717549SM	1	NUT, Hex Flange, 5/8 x 32
21	1717550SM	1	COVER, Ignition Switch
23	1665238SM	1	CIRCUIT BREAKER
24	1714771SM	1	SWITCH, Seat
25	1715956SM	1	CLIP
26	1960547SM	1	LOCKWASHER, Internal Toot
27	1665237SM	1	WIRE ASSEMBLY
28	1726667SM	1	HARNESS, Main to Clutch
29	1717050SM	1	SWITCH, Neutral Start
30	1722035SM	2	RIVET, Pop
31	1726556SM	1	SWITCH, RMO Module Only
33	1727185SM	1	KEY, (Set of 2 Keys)
34	1704379SM	1	SWITCH, Push Button
35	1726557SM	1	KEY, RMO Module, Plastic

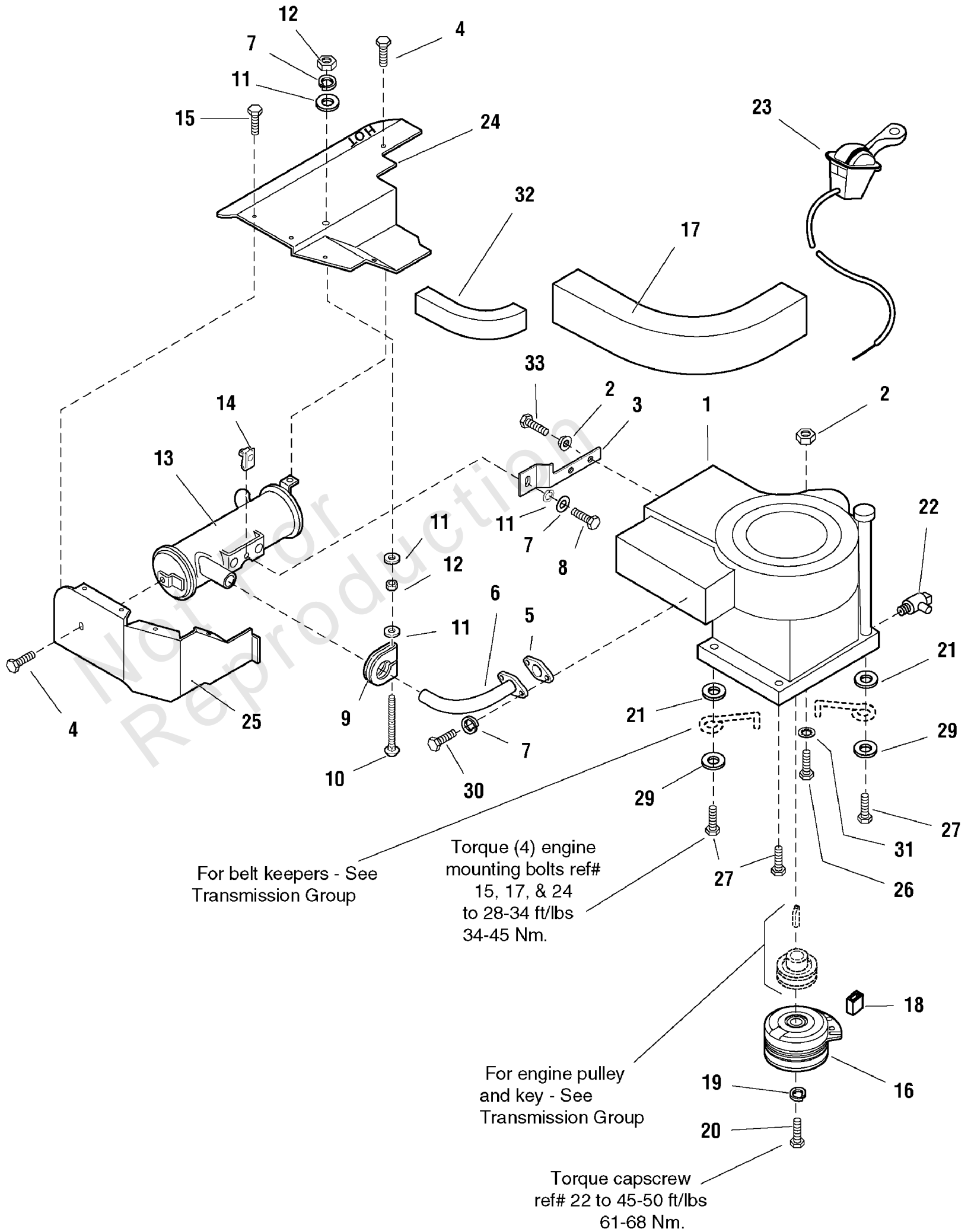
Footnotes:

Note:* If connection blades do not line up use 1686620 Switch Kit. (Contains switch, adaptor & instruction sheet.)

Engine Group

Note: Unless noted otherwise, use the standard torque specifications

Mfg. No: 2690800



Engine Group

REF NO	PART NO	QTY	DESCRIPTION
1	20B9070203G1	1	ENGINE, Briggs & Stratton, 13.5HP * -(20B9070203G1)
2	1931277SM	1	NUT, Hex Flange, 5/16-18
3	1724428ASM	1	SUPPORT, Muffler
4	1924856SM	2	CAPSCREW, Taptite, 5/16-18 x 1/2
5	1650670SM	1	GASKET, Muffler
6	1724466SM	1	PIPE, Exhaust
7	1917356SM	4	LOCKWASHER, 5/16
8	1921333SM	1	CAPSCREW, Hex Head, 5/16-18 x 1
9	1676183SM	1	CLAMP, Muffler
10	1960748SM	1	BOLT, Carriage, 5/16-18 x 3-1/4
11	1919326SM	4	WASHER, 5/16
12	1917372SM	2	NUT, Hex, 5/16-18
13	1708416SM	1	MUFFLER ASSEMBLY
14	1935255SM	1	NUT, Speed, 5/16-18
15	1960720SM	5	SCREW, #10-16 x 1/2
16	1686882SM	1	CLUTCH, Electric
17	1709055SM	1	SEAL, Air Inlet
18	1708537SM	1	SLEEVE, Clutch Anchor
19	1918199SM	1	LOCKWASHER, 7/16
20	1960370SM	1	CAPSCREW, 7/16-20 x 2-12
21	1933263SM	2	WASHER, Flat, 7/16
22	1708405SM	1	VALVE, Shut Off
23	1722955SM	1	THROTTLE CONTROL, Single
24	1724426ASM	1	DUCT, Top, R.H.
25	1724427ASM	1	DUCT, Bottom
26	1933689SM	1	CAPSCREW, Hex, Whiz, 5/16-18 x 1-1/2
27	1930598SM	3	CAPSCREW, Taptite, 3/8-16 x 1-1/2
29	1922755SM	2	WASHER, 3/8
30	1936228SM	2	CAPSCREW, Socket HEad, 5/16-18 x 3/4
31	1933988SM	1	PUSHNUT, 5/16
32	1718648SM	1	EDGING, Seal
33	1960568SM	2	CAPSCREW, Taptite, 1/4-20 x 7/8

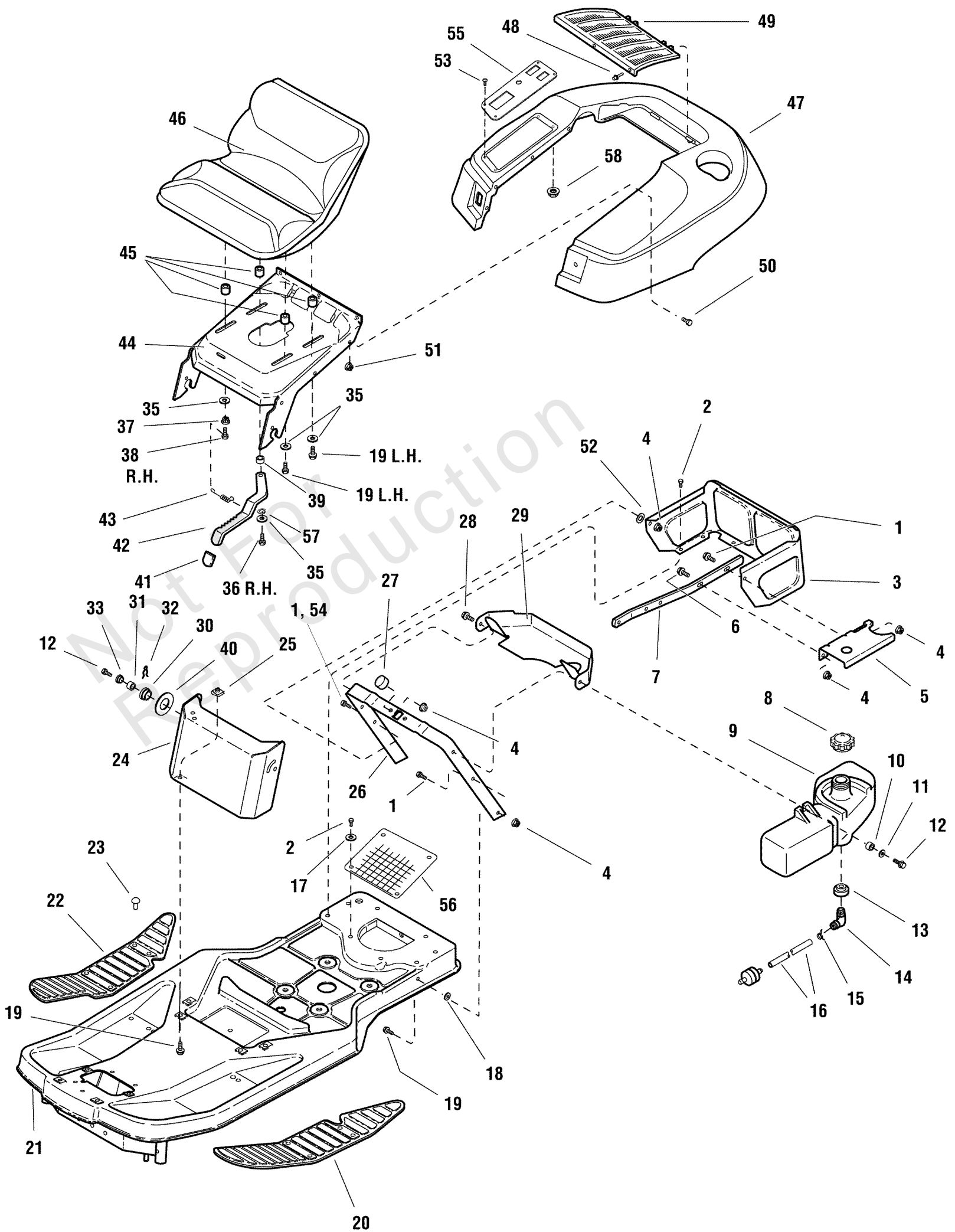
Footnotes:

Note:* See your local Briggs & Stratton distributor for parts and service.

Frame & Fuel System Group

Note: Unless noted otherwise, use the standard torque specifications

Mfg. No: 2690800



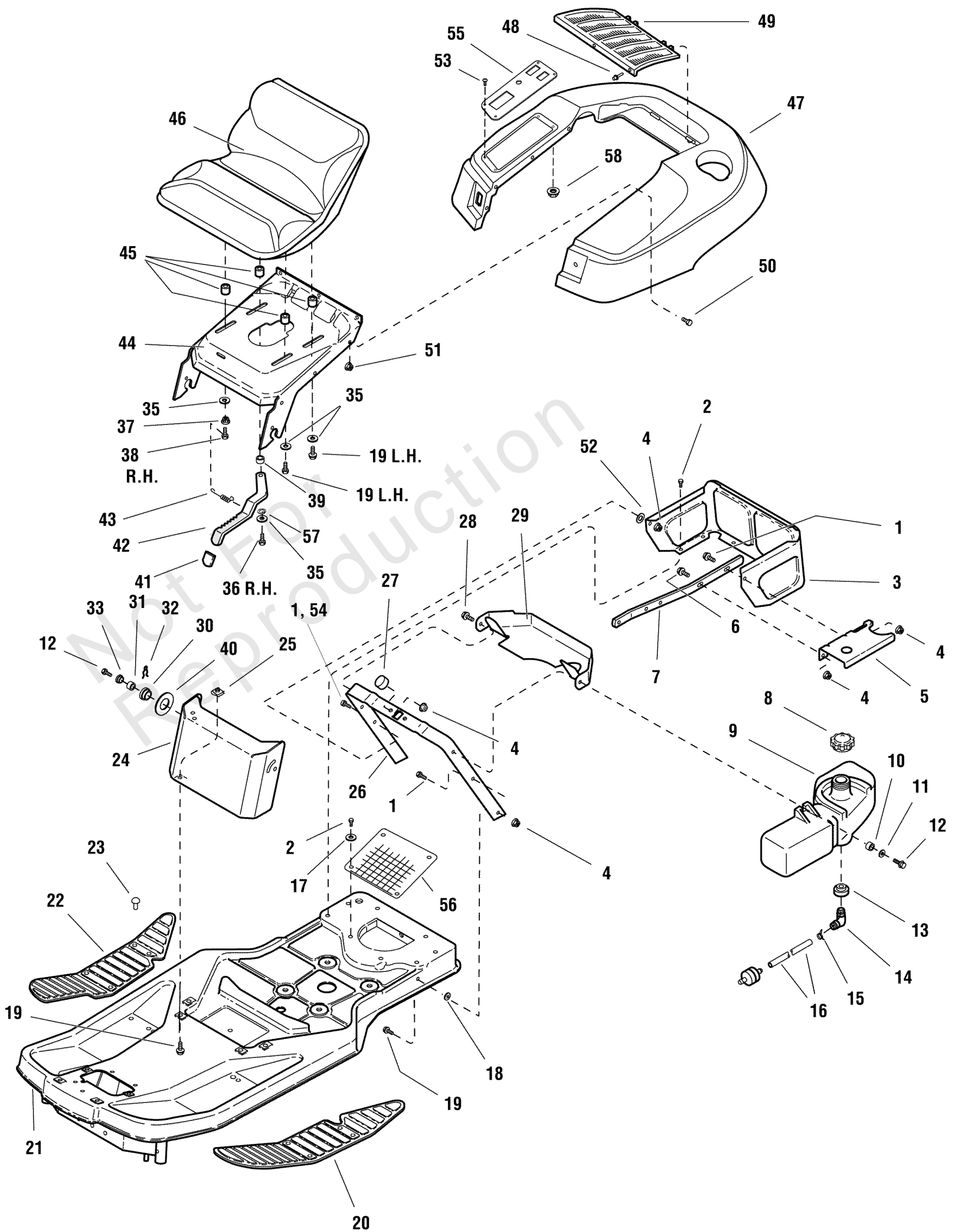
Frame & Fuel System Group

REF NO	PART NO	QTY	DESCRIPTION
1	1921333SM	2	CAPSCREW, Hex Head, 5/16-18 x 1
2	1925003SM	8	CAPSCREW, Hex Head, Taptite, 1/4-20 x 1/2
3	1715962ASM	1	SHROUD, Rear
4	1931277SM	5	NUT, Hex, Flange, Whizlock, 5/16-18
5	1726558ASM	1	SUPPORT, Fuel Tank
6	1931333SM	1	CARRIAGE BOLT, 5/16-18 x 3/4
7	1708362ASM	1	STRAP, Fuel Tank, Brace
8	1714020SM	1	CAP, Fuel Tank, Vented
9	1726635SM	1	TANK, Fuel
10	1710437SM	1	SPACER, 21/64 x 1/2 x 21/64
11	1924940SM	1	WASHER, Plain, 13/32 x 7/8 x 5/64
12	1931202SM	1	CAPSCREW, Taptite, 5/16-18 x 1-1/4 Black (16HP Models)
12	1960373SM	1	CAPSCREW, Hex, Taptite, 5/16-18 x 1 Black (13 HP Models)
13	1726400SM	1	BUSHING, Rubber
14	1674792SM	1	ELBOW, Fitting with Screen
15	791850	2	CLAMP, Hose
16	1734981SM	1	HOSE, Fuel Line
17	1960044SM	2	WASHER, Plain
18	1933988SM	2	PUSH NUT, 5/16
19	1930591SM	10	CAPSCREW, Hex Head, Whizlock, 5/16-18 x 3/4
20	1708525SM	1	PAD, Foot Rest, LH
21	1660915ASM	1	FRAME ASSEMBLY
22	1708524SM	1	PAD, Foot Rest, RH
23	1704351SM	14	FASTENER
24	1727685ASM	1	PANEL, Front
25	1935255SM	4	PAL NUT, 5/16-18
26	1726563ASM	1	SUPPORT, "U", Seat (16 HP Models)
26	1726563ASM	1	SUPPORT, "U", Seat (13 HP Models)
27	1715970SM	2	BUMPER, Rubber
28	1924856SM	1	CAPSCREW, Hex Head, Taptite, 5/16 x 1/2
29	1708725ASM	1	DUCT, Air Inlet (13 HP Models)
29	1726971ASM	1	DUCT, Air Inlet (16 HP Models)
30	1704626SM	2	SPACER, Plastic
31	1705249SM	2	SPACER
32	1704628SM	2	PIN, Quick
33	1705248SM	2	PIVOT, Hood
35	1917356SM	4	WASHER
36	1921221SM	1	CAPSCREW, Hex Head, 5/16-18 x 1-1/2
37	1917372SM	1	NUT, Hex, 5/16-18
38	1921977SM	1	CAPSCREW, Hex Head, 5/16-18 x 1 1/4
39	1703900SM	1	SPACER
40	2860208SM	2	WASHER, 1"
41	1708881SM	1	CAP, Black, Vinyl
42	1725532ASM	1	ADJUSTER, Seat
43	1667286SM	1	SPRING, Extension
44	1725531ASM	1	SUPPORT, Seat
45	1708511SM	4	SPACER
46	1725486SM	1	SEAT ASSEMBLY
47	1734144SM	1	DECK, Seat, Orange Simplicity
47	1734145SM	1	DECK, Seat, Red
47	1686638SM	1	DECK, Seat, Orange Agco Allis

Frame & Fuel System Group

Note: Unless noted otherwise, use the standard torque specifications

Mfg. No: 2690800



Frame & Fuel System Group

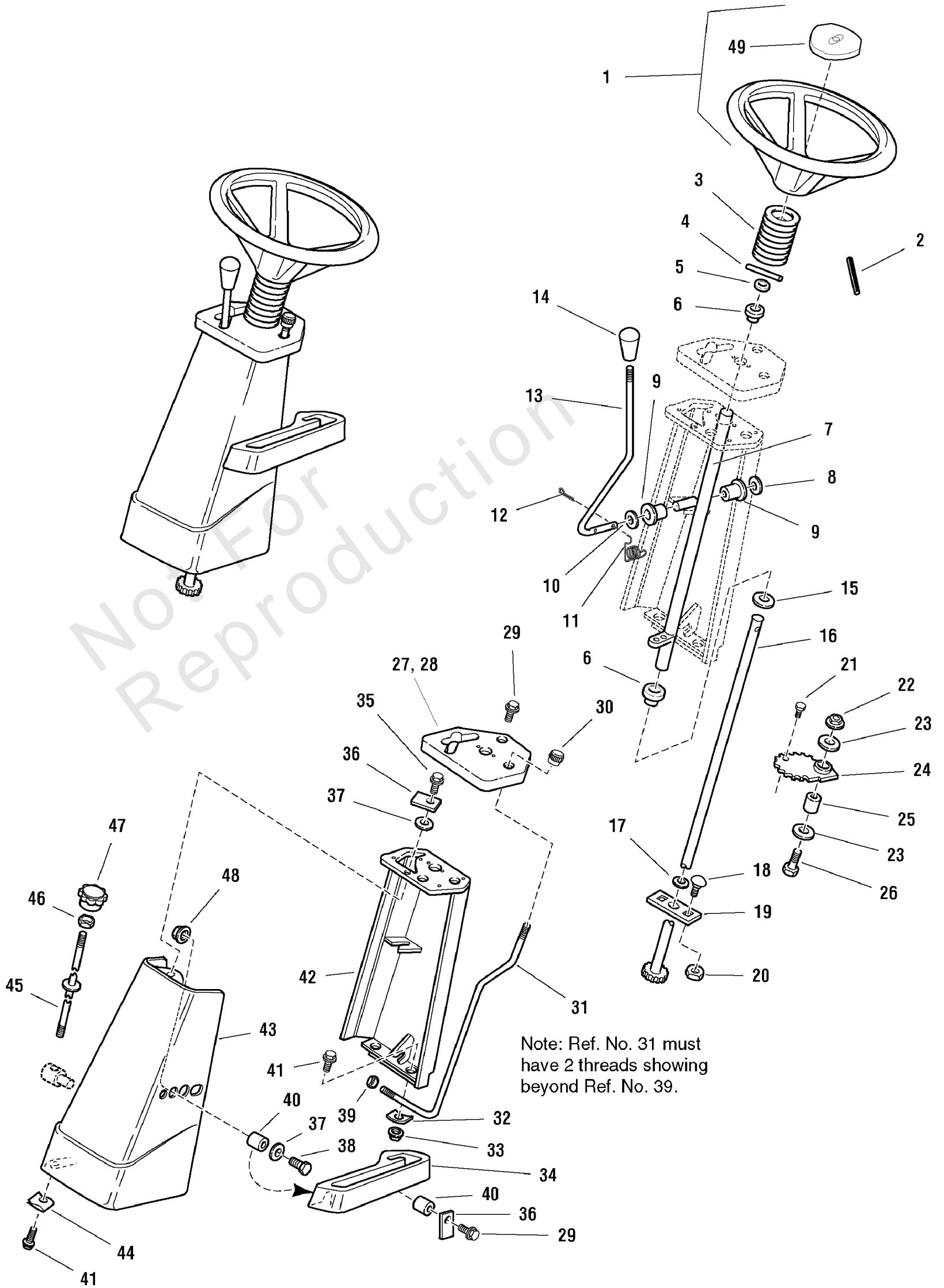
REF NO	PART NO	QTY	DESCRIPTION
48	1673320SM	3	RIVET
49	7102141SM	1	SCREEN, Seat Deck Top
50	1960295SM	7	CAPSCREW, Hex Head, Whizlock, 1/4-20 x 5/8
51	1930642SM	7	NUT, Hex, Flange Lock, 1/4-20
52	1919381SM	1	WASHER, 5/16
53	1960715SM	4	SCREW, Truss Head, 1/4-20 x 3/4
54	1922127SM	1	SCREW, Hex Head Cap, 5/16-18 x 1 3/4
55	1726836ASM	1	PLATE, Control
56	1724598SM	1	SCREEN
57	1919381SM	4	WASHER, 11/32 x 1 x 1/8
58	1920397SM	1	NUT, ESNA 1/4-20

Not For
Reproduction

Front Column & Dash Group

Note: Unless noted otherwise, use the standard torque specifications

Mfg. No: 2690800



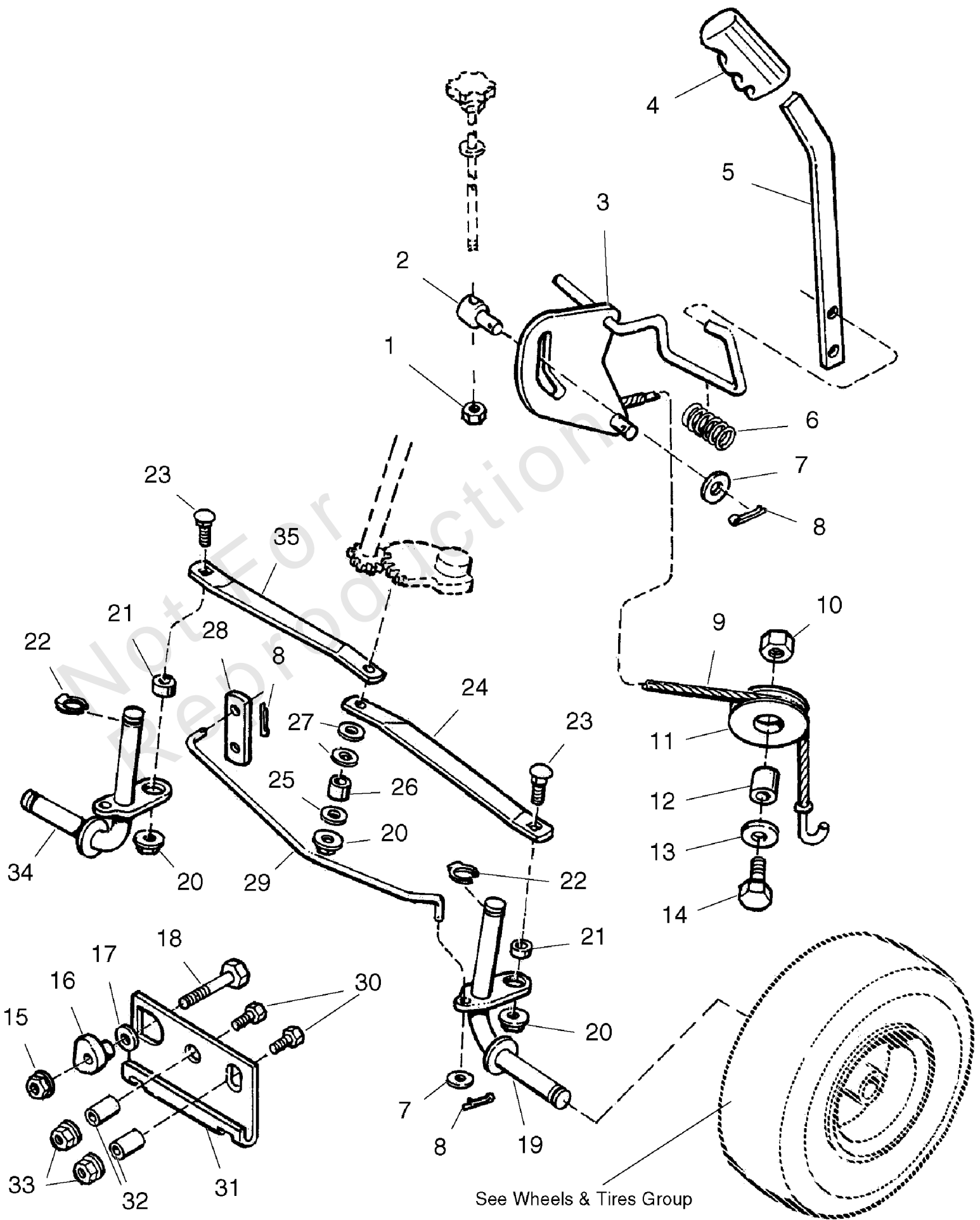
Front Column & Dash Group

REF NO	PART NO	QTY	DESCRIPTION
1	1713841SM	1	STEERING WHEEL ASSEMBLY (Includes Ref. No. 49)
2	1960540SM	1	ROLL PIN
3	1678381SM	1	TUBE, Steering
4	2816001SM	1	PIN
5	1960160SM	3	WASHER, 49/64
6	2176440SM	2	BUSHING
7	1709229SM	1	TUBE ASSEMBLY, Shift
8	1960170SM	2	WASHER
9	1704428SM	2	BUSHING
10	1924361SM	1	WASHER, Plain, 17/32 x 1-1/4 x 7/64
11	1707424SM	1	SPRING, Torsion
12	1918447SM	2	COTTER PIN
13	1707375SM	1	ROD, Shift
14	1713843SM	1	KNOB, Rod, Shift
15	1960114SM	1	WASHER, Plain, 11/32 x 1 x 1/8
16	1706014SM	1	SHAFT ASSEMBLY, Steering
17	2173668SM	1	WASHER, Plain
18	1931350SM	2	CARRIAGE BOLT, 3/8-16 x 1
19	1703508ASM	1	PLATE, Steering Mounting
20	1928352SM	2	NUT, Hex, 3/8-16
21	1921221SM	1	CAPSCREW, Hex Head, 5/16-18 x 1-1/2
22	1960339SM	1	NUT, Hex, Flange Lock, 3/8-16
23	1924356SM	3	WASHER, 13/32 x 1-1/2 x 1/8
24	1708426SM	1	GEAR, Steering
25	1666332SM	1	SPACER
26	1923701SM	1	CAPSCREW, Hex Head, 3/8-16 x 2
27	1714081SM	1	DASH, Hydro
28	1714082SM	1	DASH, Gear
29	1925592SM	3	CAPSCREW, Hex, Flange, Taptite, 1/4-20 x 3/4
30	1713855SM	1	KNOB, Rod, Parking Brake
31	1707057SM	1	ROD, Parking Brake
32	1933988SM	2	PUSH NUT, 5/16
33	1931277SM	2	NUT, Hex, Flange, Whizlock, 5/16-18
34	1708965SM	1	QUADRANT, Lift
35	1925003SM	3	CAPSCREW, Hex Head, Taptite, 1/4-20 x 1/2
36	1709075SM	2	CLAMP
37	1921319SM	2	WASHER, Plain, 1/4
38	1924009SM	2	CAPSCREW, Hex Head, 1/4-20 x 7/8
39	1960608SM	1	NUT, Hex, Flange Centerlock, 1/4-20
40	1678392SM	3	SPACER, 17/64 x 3/8 x 21/64
41	1930591SM	6	CAPSCREW, Hex Head, Whizlock, 5/16-18 x 3/4
42	1708990ASM	1	SUPPORT, Steering
43	1708267CSM	1	SHROUD, Front (Orange)
43	1708267DSM	1	SHROUD, Front (Red)
44	1935255SM	4	PAL NUT, 5/16-18
45	1708971SM	1	ROD, Lift Height
46	1917421SM	2	NUT, Hex, Jam, 1/4-20
47	1713857SM	1	KNOB, Rod, Lift Height
48	1930641SM	2	NUT, Hex, Flange, Whizlock, 1/4-20
49	1714097SM	1	CAP

Steering & Lift Group

Note: Unless noted otherwise, use the standard torque specifications

Mfg. No: 2690800



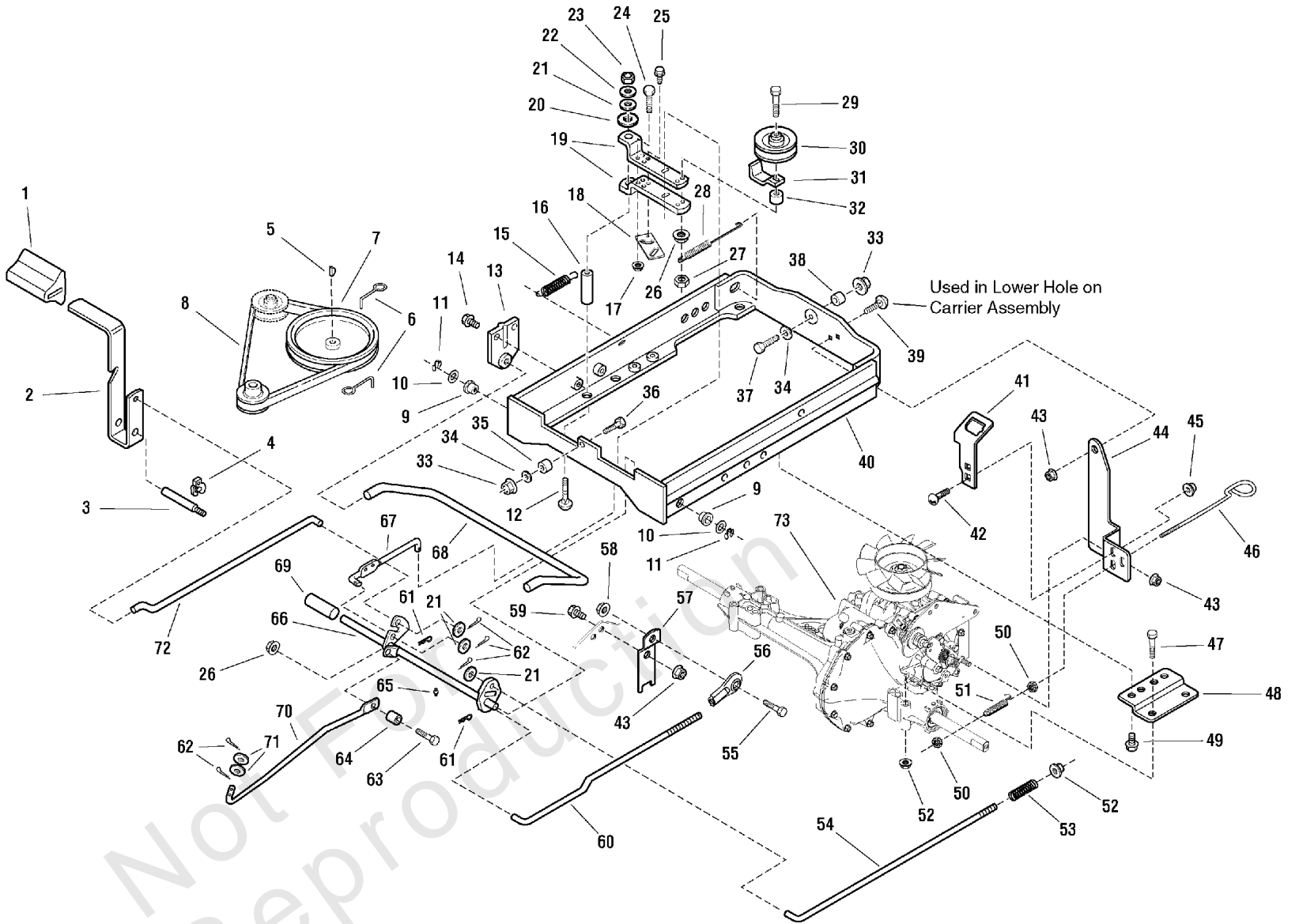
Steering & Lift Group

REF NO	PART NO	QTY	DESCRIPTION
1	1930645SM	1	NUT, Hex, 3/8-16
2	2108512SM	1	PIVOT
3	1708955ASM	1	ARM ASSEMBLY, Lift
4	1708966SM	1	GRIP, Lever
5	1708557ASM	1	LEVER, Lift
6	1708884SM	1	SPRING, Compression
7	1924940SM	3	WASHER, Plain, 13/32 x 7/8 x 5/64
8	1918447SM	3	COTTER PIN, 3/32 x 3/4
9	1708556SM	1	CABLE ASSEMBLY, Lift
10	1919439SM	1	NUT, Hex, Esna Lock, 3/8-16
11	1708559SM	1	PULLEY, Lift
12	1708973SM	1	SPACER
13	1924356SM	1	WASHER, Plain, 13/32 x 1-1/2 x 1/8
14	1921969SM	1	CAPSCREW, Hex Head, 3/8-16 x 1-1/2
15	1930645SM	1	NUT, Hex, Flange Lock, 3/8-16
16	1708514SM	1	ECCENTRIC
17	1922755SM	1	WASHER, 13/32 x 7/8 x 1/8
18	1921971SM	1	CAPSCREW, Hex Head, 3/8-16 x 1-3/4
19	1706011SM	1	SPINDLE ASSEMBLY, LH
20	1935048SM	3	NUT, Hex, Flange Lock, 5/16-18
21	1960236SM	2	SPACER
22	1611710SM	2	KLIP RING
23	1960655SM	2	CARRIAGE BOLT, 5/16-18 x 1-1/4
24	1708501ASM	1	TIE ROD, LH
25	1919381SM	1	WASHER
26	1710703SM	1	SPACER, 3/8 x 1/2 x 5/8
27	1960170SM	2	WASHER
28	1708516ASM	1	LEVER
29	1708521SM	1	ROD, Hitch
30	1920328SM	2	CAPSCREW, Hex, 1/2-13 x 1-1/2
31	1709237ASM	1	HITCH, Hook
32	1709235SM	2	SPACER
33	1930644SM	2	NUT, Hex Flange, Two-Way Lock, 1/2-13
34	1706019SM	1	SPINDLE ASSEMBLY, RH
35	1708500ASM	1	TIE ROD, RH

Transmission Group - Hydro-Gear 340-0510

Note: Unless noted otherwise, use the standard torque specifications

Mfg. No: 2690800



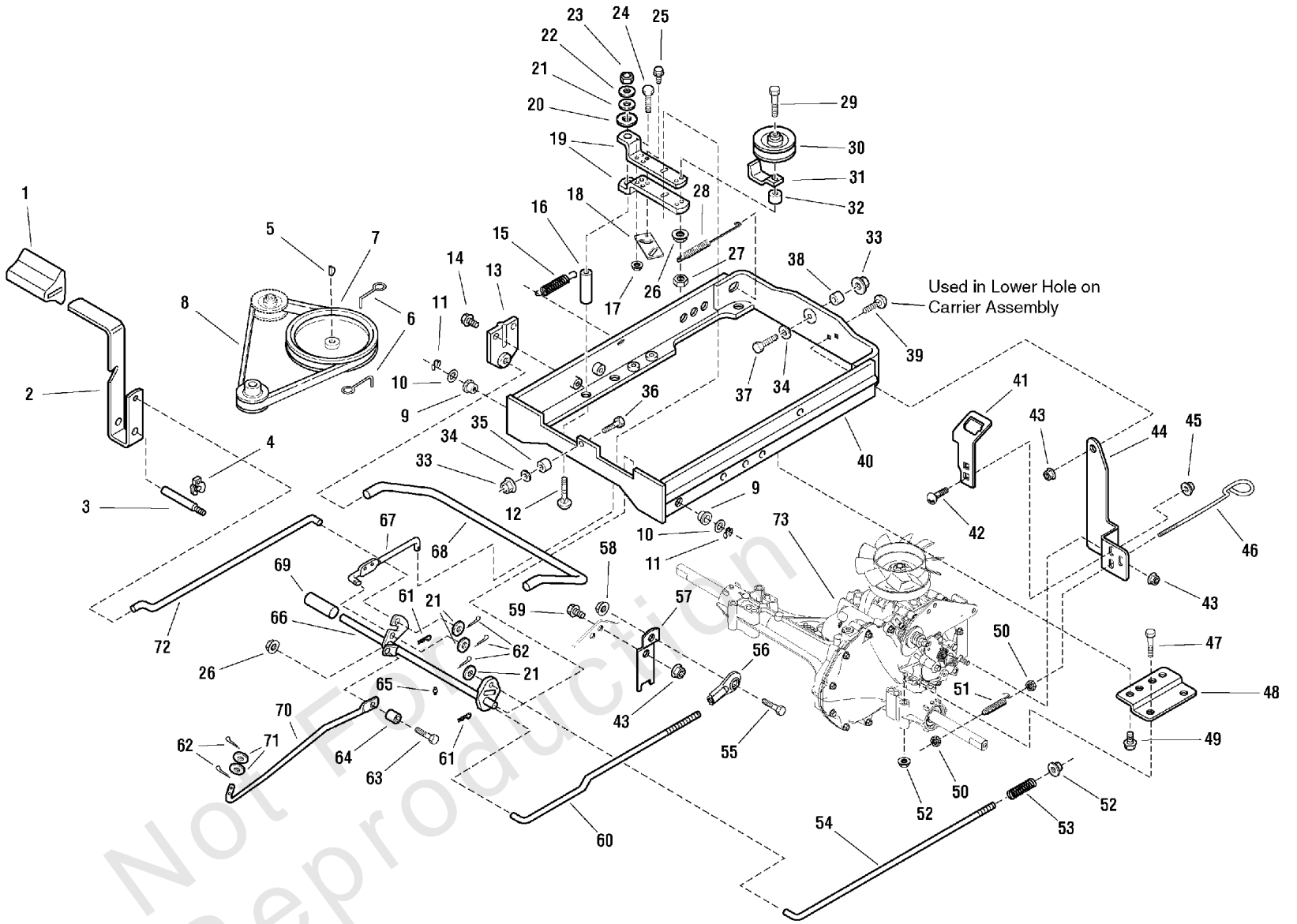
Transmission Group - Hydro-Gear 340-0510

REF NO	PART NO	QTY	DESCRIPTION
1	1704849SM	1	PAD, Brake
2	1723348ASM	1	LEVER, Clutch
3	1708409SM	1	PIVOT, Brake
4	1708554SM	1	RING, Klipring Extension
5	2171241SM	1	KEY, Hi-Pro
6	1704419SM	2	STOP, Belt
7	1723497SM	1	PULLEY & HUB ASSEMBLY, Engine
8	1707346SM	1	V - BELT
9	1715025SM	2	BUSHING
10	1924361SM	2	WASHER, 1/2
11	1703805SM	1	RING, Klipring Extension
12	1931342SM	1	CARRIAGE BOLT, 5/16 - 18 x 2-1/4 G5
13	1708367SM	2	BRACKET, Torsion Bar
14	1924856SM	4	SCREW, Hex, Washer Head, Taptite, 5/16 - 18 x 1/2
15	2159106SM	1	SPRING, Extension
16	1709345SM	1	SPACER
17	1930641SM	1	NUT, Hex, Flange, 1/4 - 20, Whiz Lock LG
18	1725839ASM	1	PLATE, Idler 10GA
19	1709221SM	2	CLEVIS HALF
20	1924366SM	1	WASHER, 5/8
21	1919326SM	5	WASHER, 5/16
22	1917356SM	1	LOCKWASHER, Spring 5/16
23	1917372SM	1	NUT, Hex 5/16 - 18
24	1923341SM	1	CAPSCREW, Hex Head, 1/4 - 20 x 3/4 G5
25	1927429SM	1	SCREW, Hex, Washer Head, Taptite, 1/4 - 20 x 5/8
26	1928352SM	2	NUT, Hex Flange,, 3/8 - 16 Whiz Lock LG
27	1928731SM	1	NUT, Hex, Toplock, Jam, 3/8 - 16
28	1725250SM	1	SPRING, Extension
29	1922918SM	1	CAPSCREW, Hex Head, 3/8 - 16 x 3-1/4 G5
30	1668827SM	1	PULLEY
31	1708352ASM	1	GUARD, Spring
32	1725838SM	1	SPACER
33	1930644SM	1	NUT, Hex Flange, Two-Way Lock, 1/2-13
34	1924361SM	1	WASHER, 1/2
35	1719683SM	1	SPACER
36	1921176SM	1	CAPSCREW, Hex Head, 1/2 - 20 x 1-1/4 G5
37	1923114SM	1	CAPSCREW, Hex Head, 1/2 - 13 x 1 G5
38	1719725SM	1	SPACER
39	1931332SM	1	CARRIAGE BOLT, 5/16 - 18 x 5/8 G5
40	1687051SM	1	CARRIER ASSEMBLY
41	1726554ASM	1	BRACKET, Switch Mounting (No-Mow Models Only)
42	1931317SM	2	CARRIAGE BOLT, 1/4 - 20 x 3/4, G5 (No-Mow Models Only)
43	1931277SM	3	NUT, Hex Flange, 5/16 - 18, Whiz Lock Small
44	1726555ASM	1	STRAP, Torque (No-Mow Models Only)
44	1726555ASM	1	STRAP, Torque
45	1960694SM	2	NUT, Hex Flange, 1/4 - 20 ESNA (No-Mow Models Only)
46	1733995SM	1	ROD, Bypass
47	1921719SM	4	CAPSCREW, Hex Head, 5/16 - 18 x 2-1/2 G5
48	1725706ASM	2	BRACKET, Mounting
49	1664847SM	4	SCREW, Hex, Washer Head, Taptite, 5/16 - 18 x 3/4
50	1916621SM	2	NUT, Hex Machine Screw

Transmission Group - Hydro-Gear 340-0510

Note: Unless noted otherwise, use the standard torque specifications

Mfg. No: 2690800



Transmission Group - Hydro-Gear 340-0510

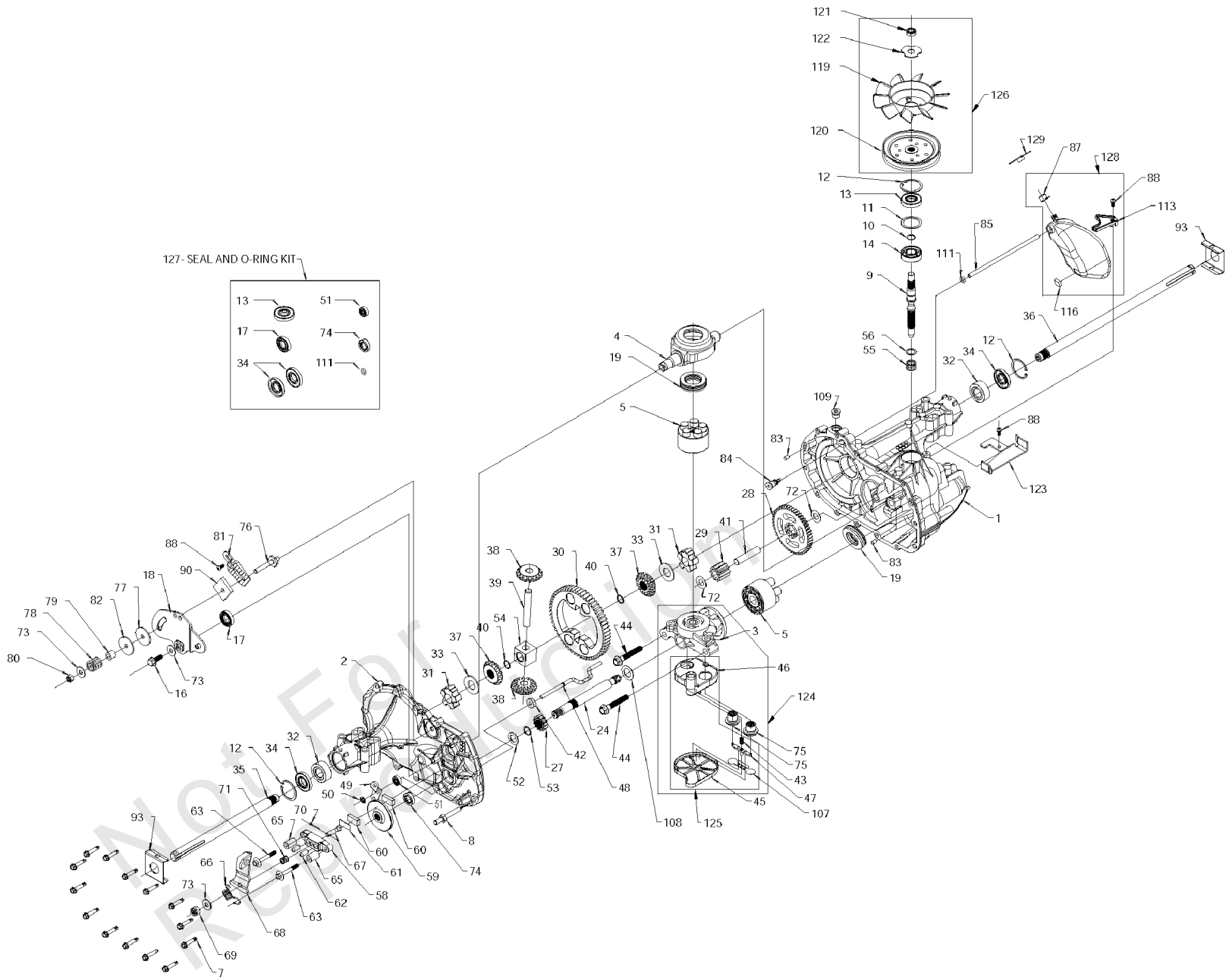
REF NO	PART NO	QTY	DESCRIPTION
51	1726327SM	1	SPRING, Extension
52	1935048SM	5	NUT, Hex Flange, 5/16 - 18, Two-Way Lock
53	1708360SM	1	SPRING
54	1725166SM	1	ROD, Brake
55	1921210SM	1	CAPSCREW, Hex Head, 3/8 - 16 x 1 G5
56	1726559SM	1	ROD, End
57	1725736ASM	1	LEVER, Control
58	1930645SM	1	NUT, Hex Flange, 3/8 - 16, Two-Way Lock
59	1925205SM	1	CAPSCREW, Hex Head, 5/16 - 18 x 5/8 G5
60	1725167SM	1	ROD, Control
61	1722460SM	2	PIN, Quick
62	1918447SM	6	PIN, Cotter
63	2860709SM	1	SCREW, Hex, Whiz Lock, Flange, 3/8 - 16 x 1-3/4
64	1666804SM	1	SPACER
65	2821133SM	1	FITTING, Lube, 1/4 Drive
66	1725768SM	1	SHAFT & ARMS ASSEMBLY, Pivot
67	1709220SM	1	CLUTCH, Rear
68	1708366SM	1	BAR, Torsion
69	1709850SM	1	TUBE
70	1725767SM	1	ROD, Shift, Front
71	1924359SM	2	WASHER, 1/2
72	1706260SM	1	ROD, Clutch, Front
73	1725620SM	1	TRANSMISSION ASSEMBLY, Hydro Gear

Not For Reproduction

Transmission SERVICE PARTS - Hydro-Gear 340-0510 (1725620)

Note: Unless noted otherwise, use the standard torque specifications

Mfg. No: 2690800



Transmission SERVICE PARTS - Hydro-Gear 340-0510 (1725620)

REF NO	PART NO	QTY	DESCRIPTION
1	-----	1	MAIN HOUSING, ASSEMBLY
2	-----	1	SIDE HOUSING, ASSEMBLY
3	-----	1	CENTER SECTION, ASSEMBLY
4	-----	1	SWASHPLATE, TRUNNION MACHINED
5	-----	2	BLOCK - ASSEMBLY
6	-----	10.5	OZSEALANT (Not Shown)
7	1730269SM	14	HEX FLANGE SCREW 1/4-20 X 1.25
8	1730270SM	1	STUD, 5/16-24 HEX DOUBLE END
9	1730271SM	1	SHAFT, INPUT
10	1715270SM	1	RING - RETAINING
11	1730272SM	1	SPACER
12	1730273SM	1	RING - RETAINING
13	-----	1	SEAL, LIP .67 X 1.58 X .276
14	1730274SM	1	BALL BRG 17MM ID X 40MM OD X 12MM
16	1730275SM	1	HEX FLANGE HEAD SCREW 5/16-24 X 0.75
17	-----	1	LIP SEAL 18 X 32 X 7
18	1730276SM	1	ARM, CONTROL
19	-----	1	BEARING, 30X52X13 THRUST
24	-----	1	SHAFT, MOTOR
27	-----	1	GEAR - PINNION, 13T
28	-----	1	10T/48T GEAR
29	-----	1	GEAR, 10T JACKSHAFT
30	-----	1	60T BULL GEAR
31	-----	2	SLEEVE BEARING .75 X 1.750 X .625
32	1730277SM	2	SLEEVE BEARING (OUTBOARD) .75 X 1.575 X .625
33	-----	2	WASHER, 3/4 ID X 1-1/2 OD X .13 THK
34	-----	2	LIP SEAL AXLE SEAL
35	1730278SM	1	SHAFT, AXLE .75 x 11.39 (KEY, R.H.)
36	1730279SM	1	SHAFT, AXLE .75 X 16.99 (KEY, L.H.)
37	-----	2	MITER GEAR (SPLINED)
38	-----	2	MITER GEAR 15T (0.5 ID)
39	-----	1	SHAFT
40	-----	2	RING, SPIRAL RETAINING
41	-----	1	PIN, JACKSHAFT
42	-----	1	MAGNET, RING
43	-----	1	SPRING, BYPASS
44	-----	2	BOLT, HEX FLANGE 3/8-24 X 2.5
45	-----	1	BOTTOM, FILTER
46	-----	1	BASE, FILTER W/POPPET
47	-----	1	ACTUATOR, BYPASS
48	-----	1	ROD, BYPASS ACTUATOR
49	1730280SM	1	ARM, BYPASS
50	1730281SM	1	RETAINING RING .250 EXTERNAL
51	-----	1	SEAL, LIP .741 X .250 x .250 TC
52	-----	1	FLAT WASHER, 5/8 ID X 1.0 OD X .05 THK
53	-----	1	RETAINING RING
54	-----	1	BEARING, CENTER BLOCK
55	1715171SM	1	SPRING - HELICAL COMPRESSION

Footnotes:

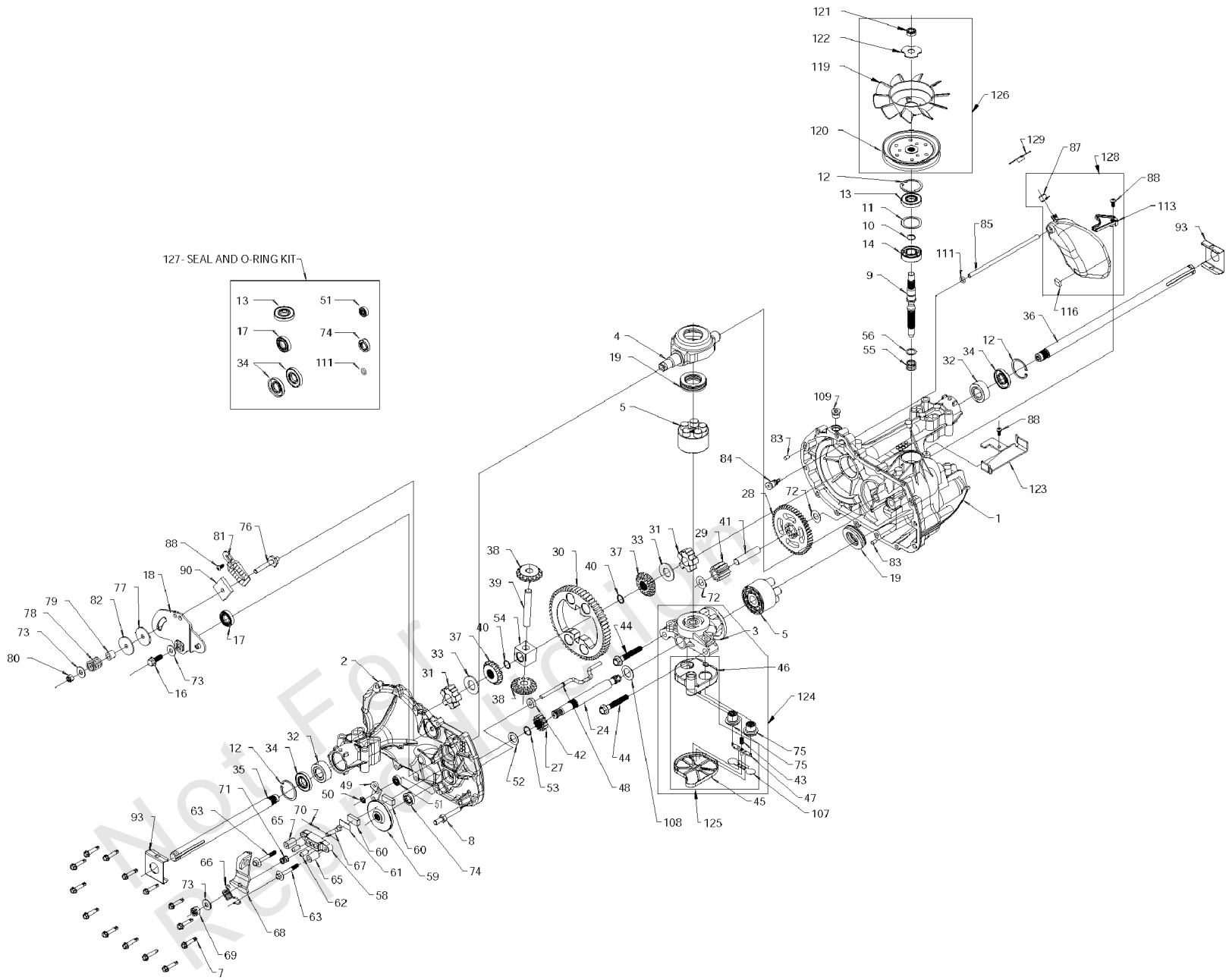
Note:** Not serviced separately, order seal kit reference # 126, 127.

Note:* Not serviced separately, order complete transmission.

Transmission SERVICE PARTS - Hydro-Gear 340-0510 (1725620)

Note: Unless noted otherwise, use the standard torque specifications

Mfg. No: 2690800



Transmission SERVICE PARTS - Hydro-Gear 340-0510 (1725620)

REF NO	PART NO	QTY	DESCRIPTION
56	1715172SM	1	WASHER
57	-----	78.8	OZ0W-50 OIL (Not Shown)
58	1730282SM	1	BRAKE YOKE
59	1730283SM	1	ROTOR, BRAKE
60	1706146SM	2	BRAKE PUCK
61	1706145SM	1	PUCK PLATE
62	1706141SM	2	BRAKE ACTUATING PIN
63	1730284SM	2	HFHCS 1/4-20 X 2 W/PATCH
65	1715199SM	2	SPACER
66	1730285SM	1	SPRING, BRAKE ARM BIAS
67	1706160SM	1	SQ.HD.BOLT 5/16-24- RIBBED
68	1730286	1	ARM, BRAKE
69	1714431SM	1	SLOTTED HEX NUT 5/16-24
70	1730287	1	COTTER PIN 3/32 X 3/4
71	1730288	1	SPRING, COMPRESSION
72	-----	2	WASHER, HT .5 X 1 X .032
73	1730289	3	FLAT - WASHER 11/32 I.D. X 7/8 O.D
74	-----	1	OIL SEAL .625 X 1.0 X.25
75	-----	2	CHECK PLUG ASSEMBLY, .027, WASHER
76	1714741SM	1	STUD, 5/16-24 FRICTION PACK
77	1730290	1	PUCK, .330 X 1.50 X .0975
78	1714739SM	1	SPRING, HELICAL COMP
79	1714740SM	1	SPACER
80	1715178SM	1	HEX LOCK NUT 5/16-24 UNJF
81	1730291	1	WEDGE, FRICTION PACK
82	1730292	1	WASHER .316 X 1.50 X .1046 (PLATED)
83	-----	2	PIN, STANDARD HEADLESS
84	-----	1	FITTING, 5/16 SAE 5/32 TUBE
85	1730293	1	HOSE, EXPANSION TANK
87	1730294	1	CAP, VENT
88	1714742SM	3	BOLT, SELF TAPPING 10-32 X 1/2
90	1730295	1	PUCK, INNER WEDGE
93	1730296	2	SPRING CLIP - HOUSING THRUST
107	-----	1	DEFLECTOR
108	-----	1	WASHER, .71 X 1.16 X .030 THK
109	1730297	1	PLUG, SAE #6
111	-----	1	O-RING .07 X .301 ID
113	1730298	1	BRACKET,SUPPORT EXPANSION TANK
116	1730299	1	SILICON SPONGE
119	1730300SM	1	FAN 6" 10 BLADE
120	1730301	1	PULLEY 3.86
121	1730302	1	NUT, HEX LOCK 1/2-20 (NYLON INSERT)
122	1730303	1	WASHER, OD SLOTTED .53 X 1.63 X .06
123	1730304	1	BELT KEEPER
124	-----	1	CENTER SECTION - FILTER - BYPASS ASSEMBLY (Incl Ref No 3, 43, 45, 46, 47, 75 & 107)
125	-----	1	FILTER ASSEMBLY (Incl Ref No 43, 45, 46, 47 & 107)
126	1730305	1	KIT, FAN/PULLEY (Incl Ref No 13, 17, 34, 51, 74 & 111)

Footnotes:

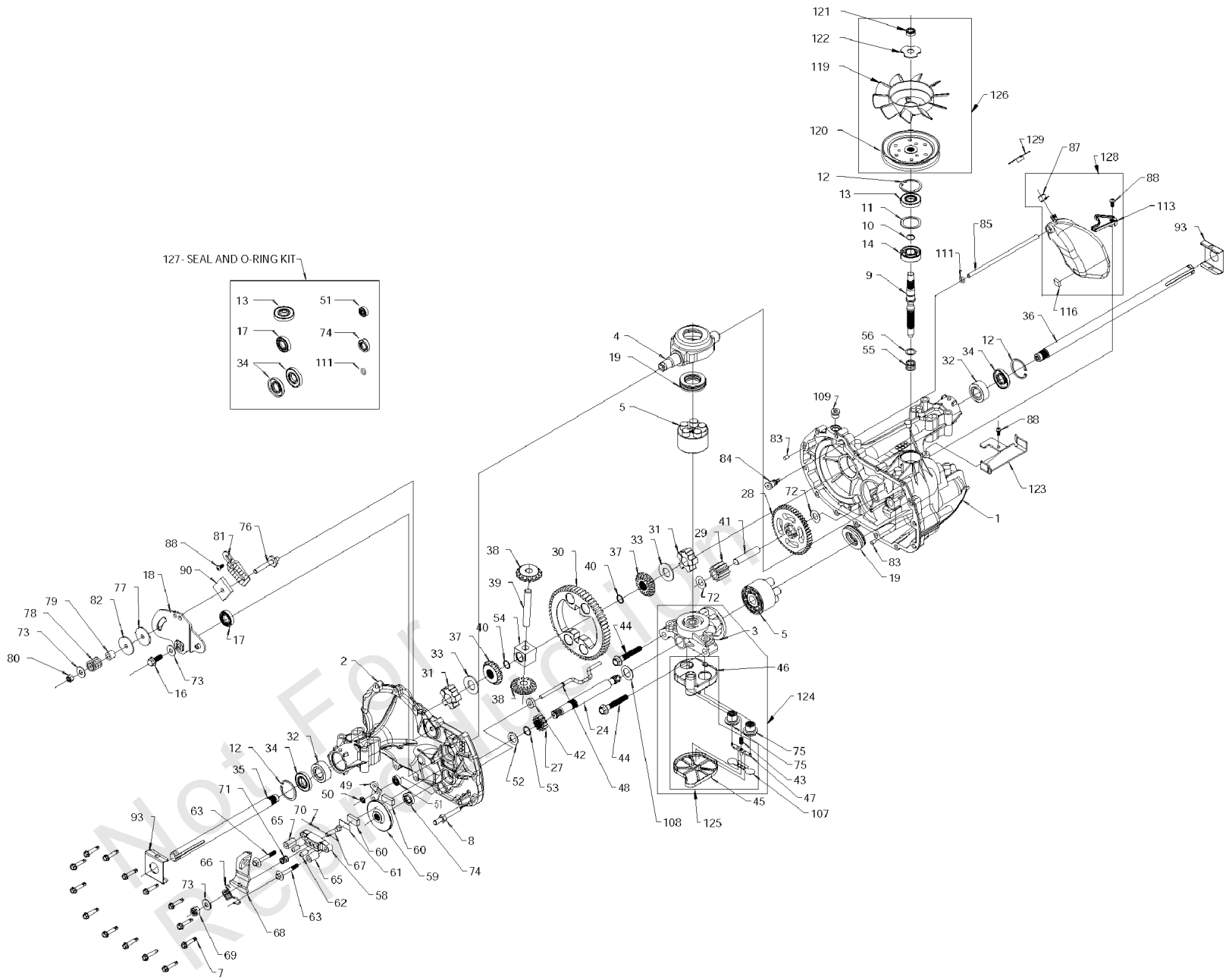
Note:** Not serviced separately, order seal kit reference # 126, 127.

Note:* Not serviced separately, order complete transmission.

Transmission SERVICE PARTS - Hydro-Gear 340-0510 (1725620)

Note: Unless noted otherwise, use the standard torque specifications

Mfg. No: 2690800



Transmission SERVICE PARTS - Hydro-Gear 340-0510 (1725620)

REF NO	PART NO	QTY	DESCRIPTION
127	1730306	1	SEAL - O-RING KIT (Incl Ref No 13, 17, 34, 51, 74 & 111)
128	1730307SM	1	KIT, EXPANSION TANK (Incl Ref No 87, 88, 113 & 116)
129	1730308	1	CAP, EXPANSION TANK SHIPPING

Not For
Reproduction

Footnotes:

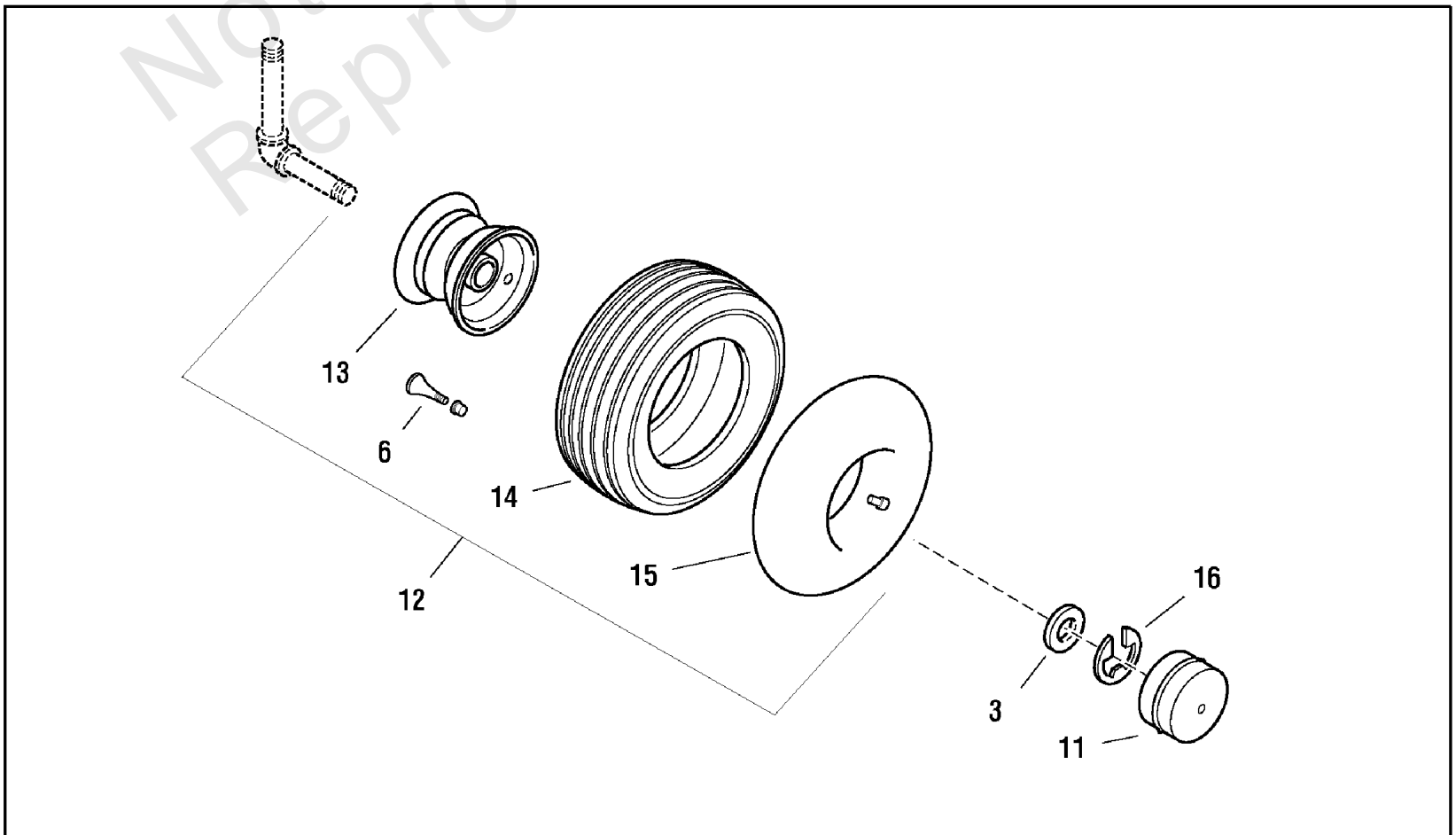
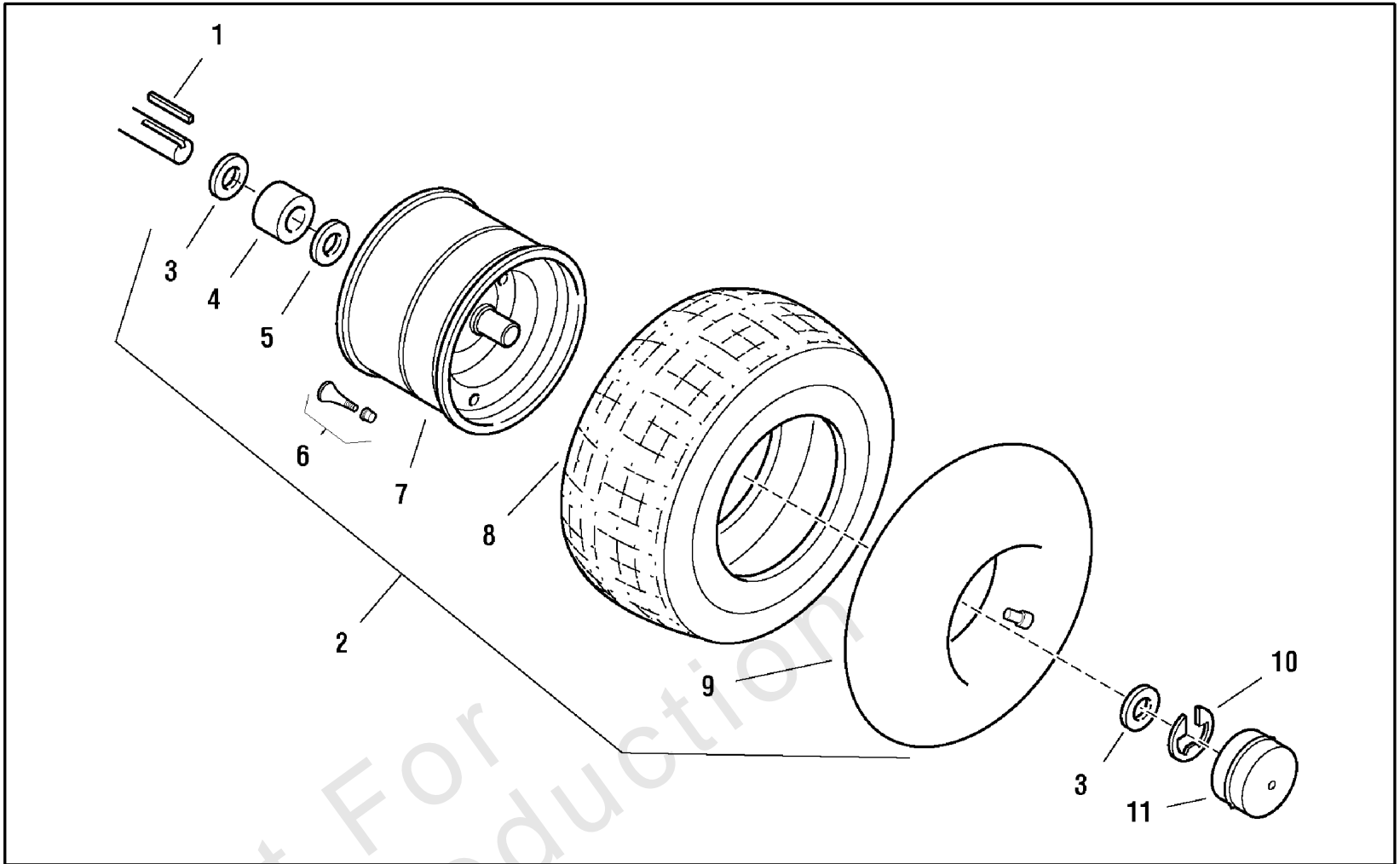
Note:** Not serviced separately, order seal kit reference # 126, 127.

Note:* Not serviced separately, order complete transmission.

Wheels & Tires Group

Note: Unless noted otherwise, use the standard torque specifications

Mfg. No: 2690800



Wheels & Tires Group

REF NO	PART NO	QTY	DESCRIPTION
1	1729279SM	2	KEY, Square, 3/16 x 3/16 x 1-1/2 long
2	1723171SM	2	REAR WHEEL & TIRE ASSEMBLY, Hoosier, (Includes Ref. Nos. 3, 4, 7 & 8)
3	2860202SM	6	WASHER, 3/4
4	1717451SM	2	SPACER
5	1960114SM	2	WASHER
6	2172353SM	4	VALVE STEM & CAP
7	1723400SM	2	REAR WHEEL ASSEMBLY, Metallic Gray
8	1723399SM	2	TIRE, Rear Wheel, 16 X 6.50-8
9	2164247SM	2	TUBE, Rear Wheel
10	2827794SM	2	E RING
11	1722675SM	4	HUB CAP, Silver
12	1723170SM	2	FRONT WHEEL & TIRE ASSEMBLY, Hoosier, 13 x 5.00-6, Metallic Gray (Includes Ref. Nos. 4, 15, 18 & 19)
13	1723402SM	2	FRONT WHEEL ASSEMBLY 13 x 5.00-6, Metallic Gray (Includes Ref. No. 16)
14	1723401SM	2	TIRE, Front Wheel, 13 x 5.00-6
15	1664090SM	2	TUBE, Front Wheel, 4.10/3.50 x 6
16	1611710SM	2	KLIP RING

Not For
Reproduction

Hardware Identification & Torque Specifications

Torque Specification Chart								
FOR STANDARD METRIC MACHINE HARDWARE (Tolerance ± 20%)								
Property Class	5.6		8.8		10.9		12.9	
	Class 5.6		Class 8.8		Class 10.9		Class 12.9	
Size Of Hardware	in/lbs	Nm.	in/lbs	Nm.	in/lbs	Nm.	in/lbs	Nm.
	ft/lbs		ft/lbs		ft/lbs		ft/lbs	
M3	5.88	.56	13.44	1.28	19.2	1.80	22.92	2.15
M4	13.44	1.28	30.72	2.90	43.44	4.10	52.56	4.95
M5	26.4	2.50	60.96	5.75	5.97	8.10	7.15	9.7
M6	44.64	4.3	7.3	9.9	10.3	14	12.1	16.5
M7	5.2	7.1	12.1	16.5	16.9	23	19.9	27
M8	7.7	10.5	17.7	24	25	34	29	40
M10	15	21	35	48	50	67	59	81
M12	26	36	61	83	86.2	117	103	140
M14	42	58	101	132	136	185	162	220
M16	64	88	147	200	210	285	250	340
M18	89	121	202	275	287	390	346	470
M20	126	171	290	390	405	550	486	660
M22	169	230	390	530	559	745	656	890
M24	217	295	497	375	708	960	840	1140
M27	320	435	733	995	1032	1400	1239	1680
M30	435	590	995	1350	1401	1900	1681	2280
M33	590	800	1349	1830	1902	2580	2278	3090
M36	759	1030	1740	2360	2441	3310	2935	3980
M39	988	1340	2249	3050	3163	4290	3798	5150

Torque Specification Chart						
FOR STANDARD MACHINE HARDWARE (Tolerance ± 20%)						
Hardware Grade	No Marks		SAE Grade 5		SAE Grade 8	
	SAE Grade 2		SAE Grade 5		SAE Grade 8	
Size Of Hardware	in/lbs	Nm.	in/lbs	Nm.	in/lbs	Nm.
	ft/lbs		ft/lbs		ft/lbs	
8-32	19	2.1	30	3.4	41	4.6
8-36	20	2.3	31	3.5	43	4.9
10-24	27	3.1	43	4.9	60	6.8
10-32	31	3.5	49	5.5	68	7.7
1/4-20	66	7.6	8	10.9	12	16.3
1/4-28	76	8.6	10	13.6	14	19.0
5/16-18	11	15.0	17	23.1	25	34.0
5/16-24	12	16.3	19	25.8	29	34.0
3/8-16	20	27.2	30	40.8	45	61.2
3/8-24	23	31.3	35	47.6	50	68.0
7/16-14	30	40.8	50	68.0	70	95.2
7/16-20	35	47.6	55	74.8	80	108.8
1/2-13	50	68.0	75	102.0	110	149.6
1/2-20	55	74.8	90	122.4	120	163.2
9/16-12	65	88.4	110	149.6	150	204.0
9/16-18	75	102.0	120	163.2	170	231.2
5/8-11	90	122.4	150	204.0	220	299.2
5/8-18	100	136	180	244.8	240	326.4
3/4-10	160	217.6	260	353.6	386	525.0
3/4-16	180	244.8	300	408.0	420	571.2
7/8-9	140	190.4	400	544.0	600	816.0
7/8-14	155	210.8	440	598.4	660	897.6
1-8	220	299.2	580	788.8	900	1,244.0
1-12	240	326.4	640	870.4	1,000	1,360.0

The guides and ruler furnished below are designed to help you select the appropriate hardware.



Nut, M8

Thread Diameter (mm)

Inside Diameter (in) Threads per inch

Nut, 1/2-16



Screw, M8- 1.25 x 25

Thread Diameter (mm) Distance between threads (mm) Body Length (mm)

Body Diameter Threads per inch Body Length (in)

Screw, 1/2- 16 x 2



Standard Hardware Sizing

When a washer or nut is identified as 1/2" (M8), this is the *Nominal size*, meaning the *inside diameter* is 1/2 inch (8mm metric thread diameter); if a second number is present it represents the *threads per inch* (distance between threads).

When bolt or capscrew is identified as 1/2 - 16 x 2" (M8 - 1.25 x 50), this means the *Nominal size*, or body diameter is 1/2 inch (8mm metric thread diameter), the second number, 16, represents the *threads per inch*, (*distance between threads*). The final number is the body length of the bolt or screw, 2 inches (50mm).

NOTES

- These torque values are to be used for all hardware excluding: locknuts, self-tapping screws, thread forming screws, sheet metal screws and socket head setscrews.
- Recommended seating torque values for locknuts:
 - for prevailing torque locknuts - use 65% of grade 5 torques.
 - for flange whizlock nuts and screws - use 135% of grade 5 torques.
- Unless otherwise noted on assembly drawings, all torque values must meet this specification.

Common Hardware Types

Hex Head Capscrew



Washer



Carriage Bolt



Hex Nut

Wrench & Fastener Size Guide

1/4" Bolt or Nut Wrench—7/16"	5/16" Bolt or Nut Wrench—1/2"	3/8" Bolt or Nut Wrench—9/16"	7/16" Bolt or Nut Wrench (Bolt)—5/8" Wrench (Nut)—11/16"	1/2" Bolt or Nut Wrench—3/4"
M6 Bolt or Nut Wrench—10mm	M8 Bolt or Nut Wrench—13mm	M10 Bolt or Nut Wrench—17mm	M12 Bolt or Nut Wrench—19mm	M14 Bolt or Nut Wrench—22mm

