



# Parts Manual

Mfg. No: 21875x51C  
Walk-Behind Mower (2000)



---

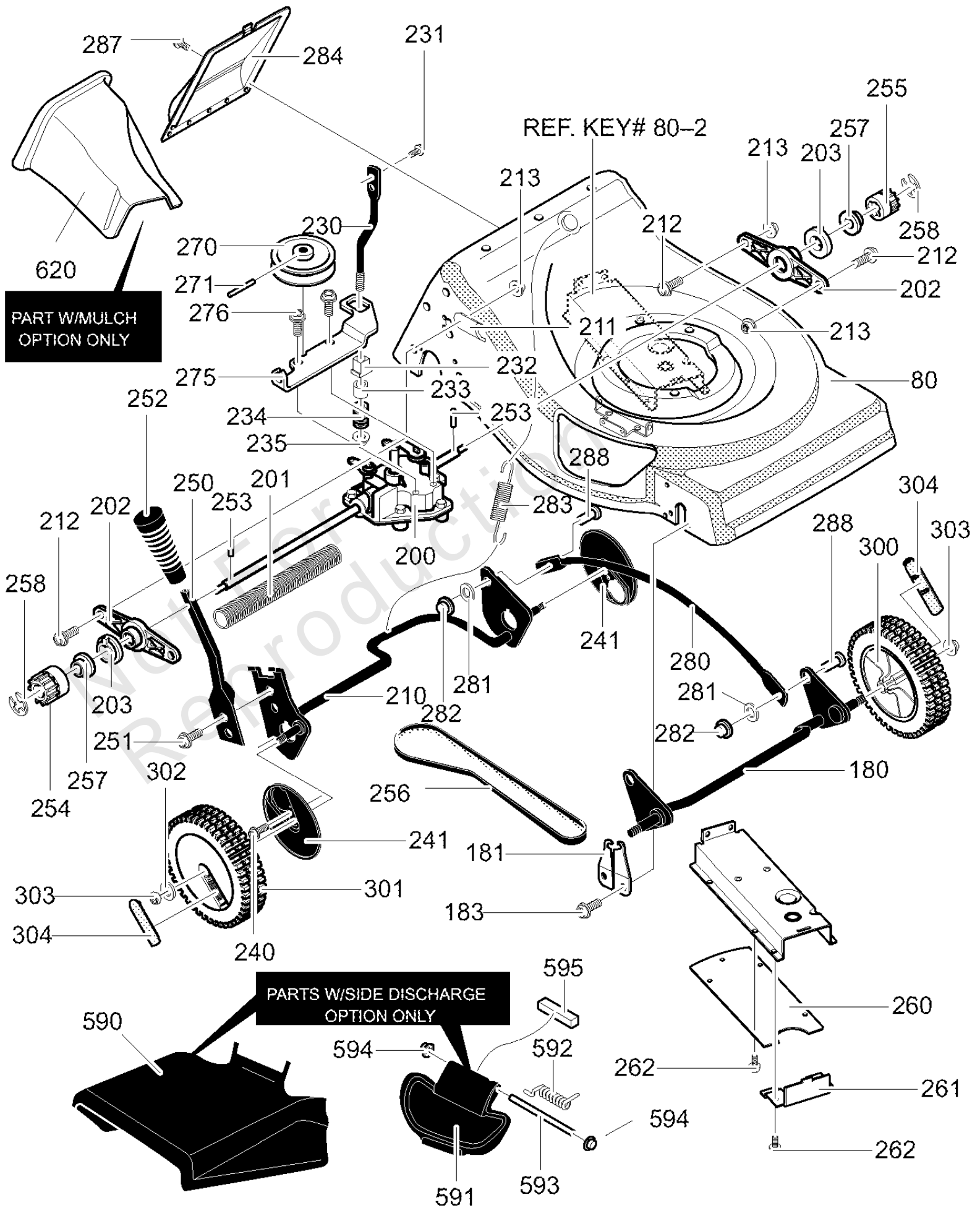
<b>Model Components</b>	<b>Page</b>
Drive & Wheel Assembly.....	4
Engine Mount.....	8
Handle & Bag Assembly.....	10
Torque Specification Chart.....	12

Not For  
Reproduction

# Drive & Wheel Assembly

Note: Unless noted otherwise, use the standard torque specifications

Mfg. No: 21875x51C



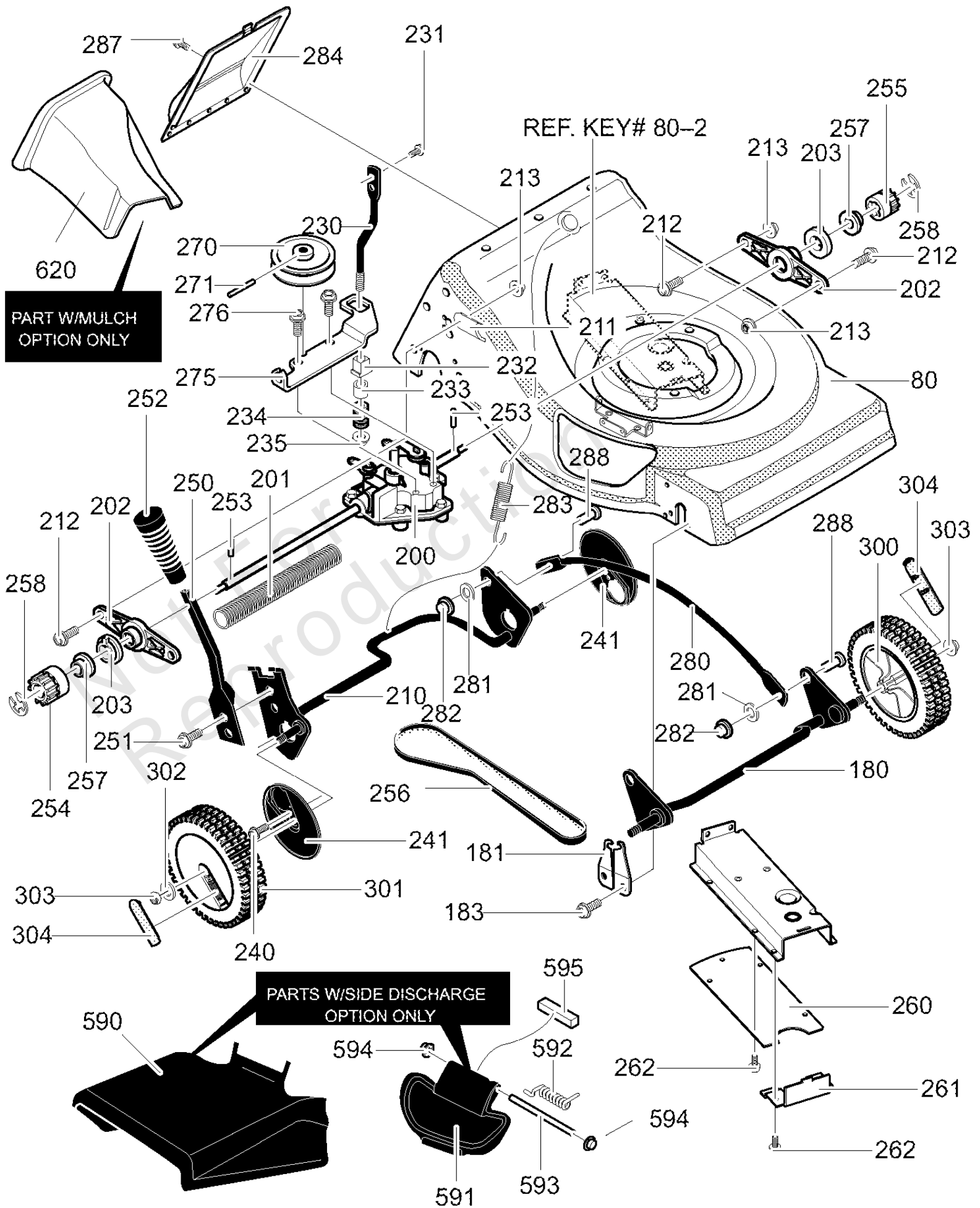
## Drive & Wheel Assembly

REF NO	PART NO	QTY	DESCRIPTION
80	672274-860		Assy., Frame
180	71152-860		Assy., Crossbar Front
181	672279MA		Bushing, Front
183	710270		Screw, 1/4-14x.50
200	672042MA		Transmission
201	643649		Shield, Axle
202	671411		Support, Axle
203	643788		Bearing, Lifter
210	672277-860		Assy., Crossbar RR
211	071482		Retainer, Bearing
212	180077MA		Screw, 5/16-18 x 0.75
213	710205		Nut, 5/16-18Wdfllk
230	071481		Support, Spring
231	710274		Screw, 1/4-20x.63
232	071480MA		Bushing, Spring
233	043844MA		Spacer
234	710327		Spring, Compression
235	710205		Nut, 5/16-18 Wdfllk
240	710270		Screw, 1/4-14x.50
241	643616MA		Dust Cover
250	672278MA		Lever, Spring
251	710274		Screw, 1/4-20x.63
252	671297MA		Knob, Hgt Adjust
253	643629		Pin, Drive
254	671904MA		Gear, Pinion Right
255	671903MA		Gear, Pinion Left
256	710190		Belt, 2L 15.75L
257	710254		Flatwasher
258	020864		Ring, Ret. E
260	43770-860		Cover, Lower Belt Guard
261	71239-860		Cover, Front Belt
262	710273		Screw, 10-16x.50
270	672269MA		Pulley, 2L
271	710294		Pin, Spring
275	671925		Bracket, Transaxle
276	710264		Screw, 1/4-20x.50
280	43720-860		Link, Lifter
281	712072		Nut, Push On
282	710285		Cap, Push On
283	711459MA		Spring, Ext.
284	71246-860		Cover, Rear Trans.
287	711863		Screw, 1/4-20x.63
288	711542MA		Pin, Clevis
300	643618		Tire & Rim
301	643617		Wheel, Drive
302	710252		Washer, Flat
303	710140		Nut, 3/8-16
304	643615		Hub Cap
--	F-000433M		Instruction Book
620	-----		UNKNOWN
590	-----		UNKNOWN

# Drive & Wheel Assembly

Note: Unless noted otherwise, use the standard torque specifications

Mfg. No: 21875x51C



## Drive & Wheel Assembly

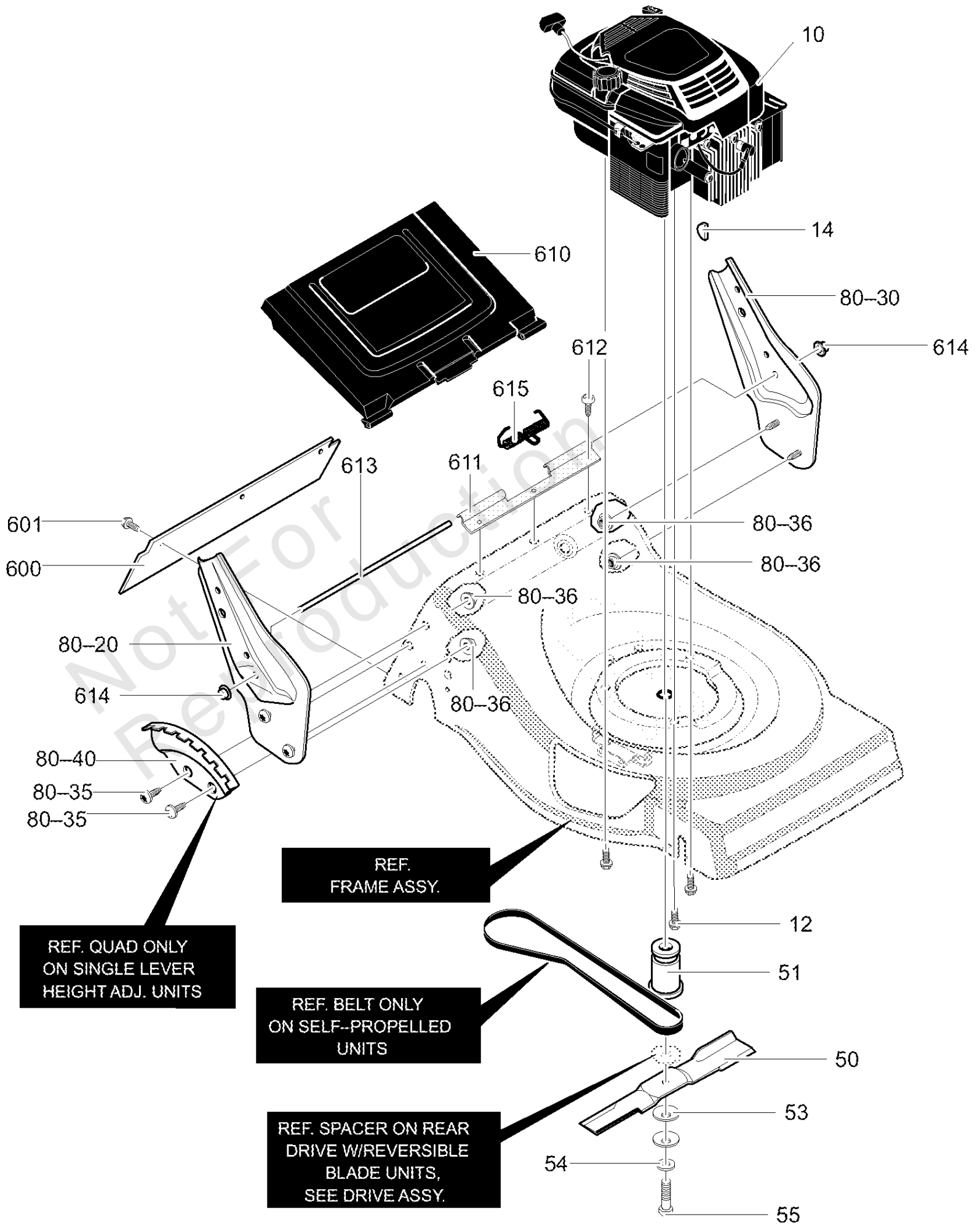
REF NO	PART NO	QTY	DESCRIPTION
595	-----		UNKNOWN
592	-----		UNKNOWN
594	-----		UNKNOWN
591	-----		UNKNOWN
593	-----		UNKNOWN
594	-----		UNKNOWN

Not For Reproduction

# Engine Mount

Note: Unless noted otherwise, use the standard torque specifications

Mfg. No: 21875x51C





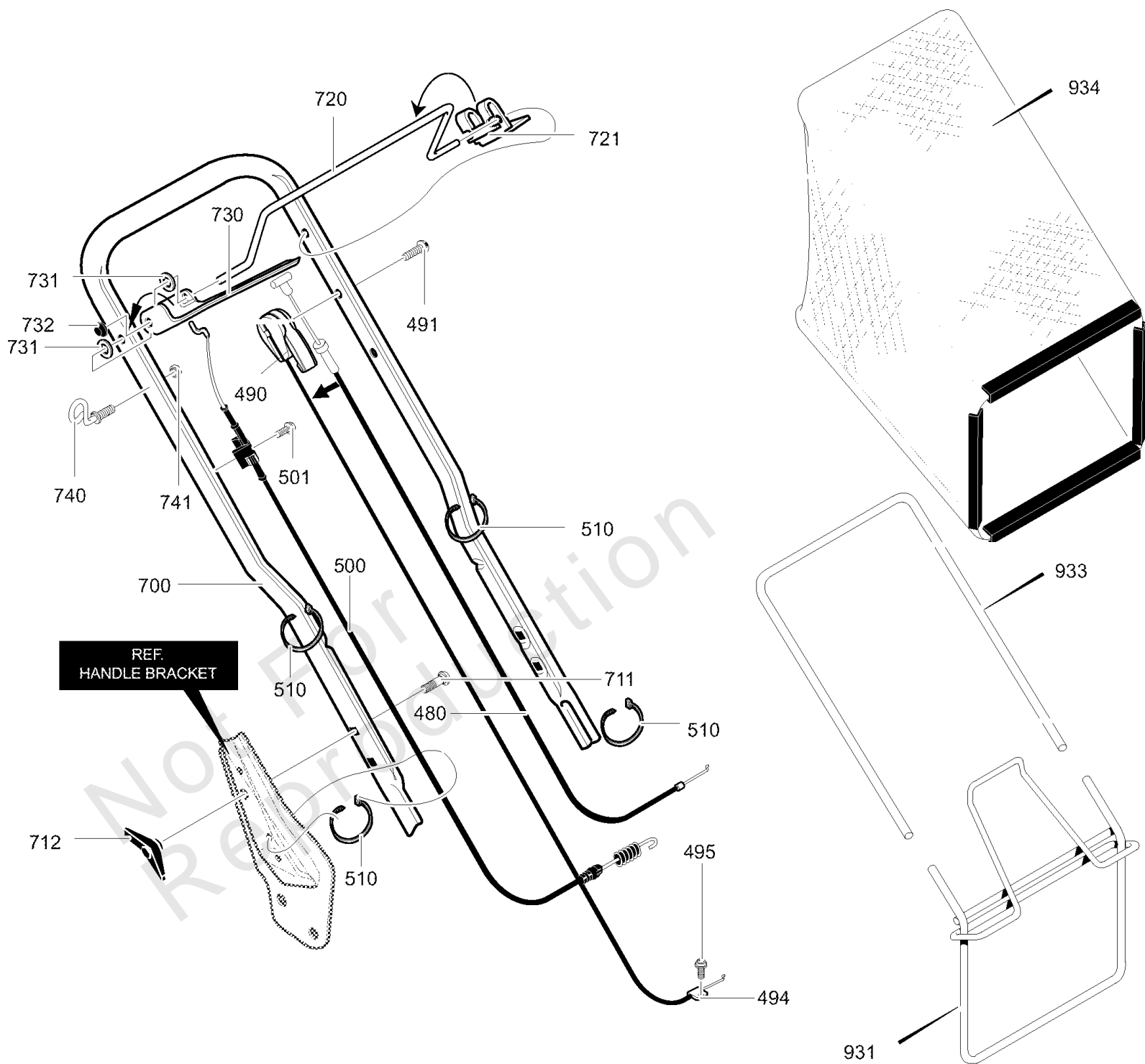
## Engine Mount

REF NO	PART NO	QTY	DESCRIPTION
10	-----		Engine, 5HP
12	47792MA		Screw, 3/8-16 x 1.00
14	2125		Key, Woodruff 505
50	71877		Blade, 21 Inch
51	671058MA		Adapter, Blade
53	710210		Washer
54	710207		Washer, Flat
55	710163		Screw, 3/8-24 x 1.50
80-20	672766		Bracket, Handle RH
80-30	672767		Bracket, Handle LH
80-35	710277		Screw, 5/16-18 x 0.63
80-36	710204		Nut, 5/16-18
80-40	672276		Quadrant, Height Adj.
600	043640		Deflector, Rear
601	710271		Screw, 3/8-24 x 1.50
610	071409		Door, Rear
611	071410MA		Spacer, RR Door
612	710273		Screw, 10-16x.50
613	672282 Z		Rod, Pivot RR Door
614	710285		Cap, Push On
615	340823		Spring, Torsion

# Handle & Bag Assembly

Note: Unless noted otherwise, use the standard torque specifications

Mfg. No: 21875x51C



## Handle & Bag Assembly

REF NO	PART NO	QTY	DESCRIPTION
480	672530MA		Cable, Stop
490	672539MA		T-Cable
491	323035MA		Screw 1/4-20x2.00
494	12425		Clamp, Throttle
495	710275		Screw, 10-32x.62
500	672545MA		Drive Cable
501	710269		Screw, 10-16x.75
510	712267		Cable Tie
700	672286-846		Handle
711	710175		Bolt, Carriage 5/16-18x2
712	671294MA		Knob, Wing
720	672429-860		Lever, Stop Engine
721	643628		Bracket, Stop Lever
730	671566MA		Lever, Drive Control
731	710491		Washer, Nylon
732	710285		Cap, Push On
740	672510MA		Rope Guide
741	710203		Nut, 1/4-20 Hexnyl
931	672293MA		Bag, Frame Assy.
933	071592MA		Frame, Catcher Bag
934	672575		Bag, Catcher

# Hardware Identification & Torque Specifications

Torque Specification Chart								
FOR STANDARD METRIC MACHINE HARDWARE (Tolerance ± 20%)								
Property Class	5.6		8.8		10.9		12.9	
	Class 5.6		Class 8.8		Class 10.9		Class 12.9	
Size Of Hardware	in/lbs	Nm.	in/lbs	Nm.	in/lbs	Nm.	in/lbs	Nm.
	ft/lbs		ft/lbs		ft/lbs		ft/lbs	
M3	5.88	.56	13.44	1.28	19.2	1.80	22.92	2.15
M4	13.44	1.28	30.72	2.90	43.44	4.10	52.56	4.95
M5	26.4	2.50	60.96	5.75	5.97	8.10	7.15	9.7
M6	44.64	4.3	7.3	9.9	10.3	14	12.1	16.5
M7	5.2	7.1	12.1	16.5	16.9	23	19.9	27
M8	7.7	10.5	17.7	24	25	34	29	40
M10	15	21	35	48	50	67	59	81
M12	26	36	61	83	86.2	117	103	140
M14	42	58	101	132	136	185	162	220
M16	64	88	147	200	210	285	250	340
M18	89	121	202	275	287	390	346	470
M20	126	171	290	390	405	550	486	660
M22	169	230	390	530	559	745	656	890
M24	217	295	497	375	708	960	840	1140
M27	320	435	733	995	1032	1400	1239	1680
M30	435	590	995	1350	1401	1900	1681	2280
M33	590	800	1349	1830	1902	2580	2278	3090
M36	759	1030	1740	2360	2441	3310	2935	3980
M39	988	1340	2249	3050	3163	4290	3798	5150

Torque Specification Chart						
FOR STANDARD MACHINE HARDWARE (Tolerance ± 20%)						
Hardware Grade	No Marks		SAE Grade 5		SAE Grade 8	
	SAE Grade 2		SAE Grade 5		SAE Grade 8	
Size Of Hardware	in/lbs	Nm.	in/lbs	Nm.	in/lbs	Nm.
	ft/lbs		ft/lbs		ft/lbs	
8-32	19	2.1	30	3.4	41	4.6
8-36	20	2.3	31	3.5	43	4.9
10-24	27	3.1	43	4.9	60	6.8
10-32	31	3.5	49	5.5	68	7.7
1/4-20	66	7.6	8	10.9	12	16.3
1/4-28	76	8.6	10	13.6	14	19.0
5/16-18	11	15.0	17	23.1	25	34.0
5/16-24	12	16.3	19	25.8	29	34.0
3/8-16	20	27.2	30	40.8	45	61.2
3/8-24	23	31.3	35	47.6	50	68.0
7/16-14	30	40.8	50	68.0	70	95.2
7/16-20	35	47.6	55	74.8	80	108.8
1/2-13	50	68.0	75	102.0	110	149.6
1/2-20	55	74.8	90	122.4	120	163.2
9/16-12	65	88.4	110	149.6	150	204.0
9/16-18	75	102.0	120	163.2	170	231.2
5/8-11	90	122.4	150	204.0	220	299.2
5/8-18	100	136	180	244.8	240	326.4
3/4-10	160	217.6	260	353.6	386	525.0
3/4-16	180	244.8	300	408.0	420	571.2
7/8-9	140	190.4	400	544.0	600	816.0
7/8-14	155	210.8	440	598.4	660	897.6
1-8	220	299.2	580	788.8	900	1,244.0
1-12	240	326.4	640	870.4	1,000	1,360.0

The guides and ruler furnished below are designed to help you select the appropriate hardware.

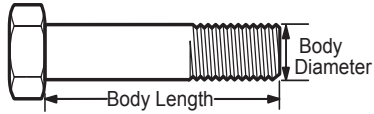


Nut, M8

Thread Diameter (mm)

Inside Diameter (in)      Threads per inch

Nut, 1/2-16



Screw, M8- 1.25 x 25

Thread Diameter (mm)      Distance between threads (mm)      Body Length (mm)

Body Diameter      Threads per inch      Body Length (in)

Screw, 1/2- 16 x 2



## Standard Hardware Sizing

When a washer or nut is identified as 1/2" (M8), this is the *Nominal size*, meaning the *inside diameter* is 1/2 inch (8mm metric thread diameter); if a second number is present it represents the *threads per inch* (distance between threads).

When bolt or capscrew is identified as 1/2 - 16 x 2" (M8 - 1.25 x 50), this means the *Nominal size*, or body diameter is 1/2 inch (8mm metric thread diameter), the second number, 16, represents the *threads per inch*, (*distance between threads*). The final number is the body length of the bolt or screw, 2 inches (50mm).

## NOTES

- These torque values are to be used for all hardware excluding: locknuts, self-tapping screws, thread forming screws, sheet metal screws and socket head setscrews.
- Recommended seating torque values for locknuts:
  - for prevailing torque locknuts - use 65% of grade 5 torques.
  - for flange whizlock nuts and screws - use 135% of grade 5 torques.
- Unless otherwise noted on assembly drawings, all torque values must meet this specification.

## Common Hardware Types

Hex Head Capscrew



Washer



Carriage Bolt



Hex Nut

## Wrench & Fastener Size Guide

1/4" Bolt or Nut Wrench—7/16"	5/16" Bolt or Nut Wrench—1/2"	3/8" Bolt or Nut Wrench—9/16"	7/16" Bolt or Nut Wrench (Bolt)—5/8" Wrench (Nut)—11/16"	1/2" Bolt or Nut Wrench—3/4"
M6 Bolt or Nut Wrench—10mm	M8 Bolt or Nut Wrench—13mm	M10 Bolt or Nut Wrench—17mm	M12 Bolt or Nut Wrench—19mm	M14 Bolt or Nut Wrench—22mm

**MURRAY®**