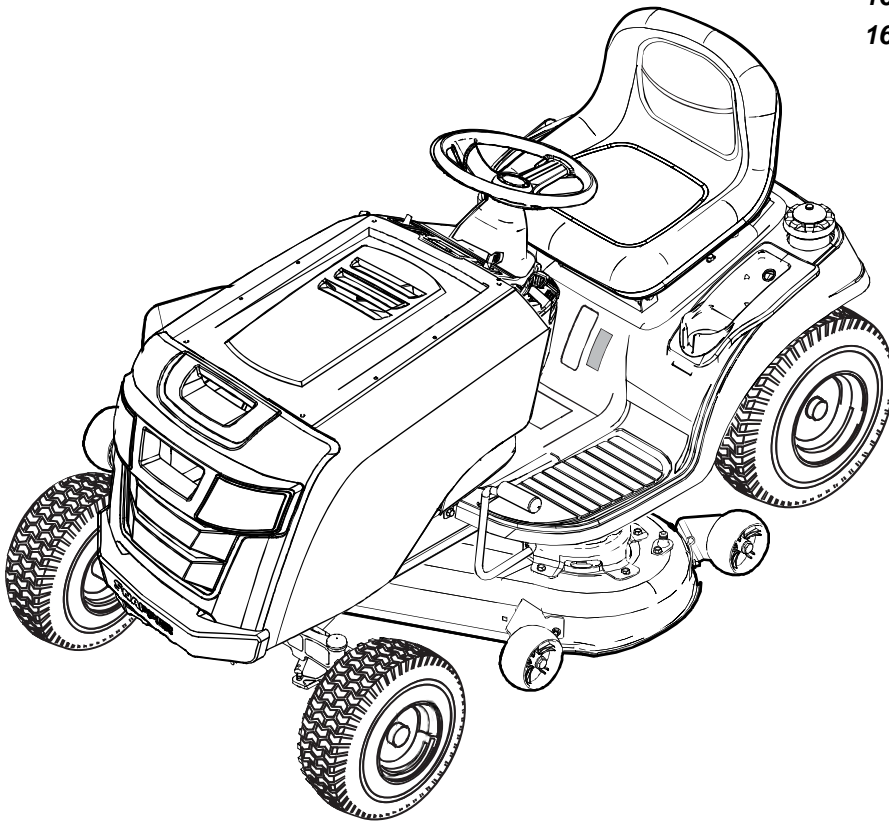


Parts Manual for

SNAPPER®

LAWN TRACTOR ELECTRIC CLUTCH EUROPEAN SPX LAWN TRACTOR LT150

<i>Model No.</i>	<i>Description</i>
2691217-00	ESPX17542
2691217-01	ESPX17542
1696439-00	42" (106.7cm) Rotary Mower
1696439-01	42" (106.7cm) Rotary Mower



Briggs & Stratton Yard Power Products Group

535 Macon Road
McDonough, GA, 30253 U.S.A.
800-935-2967

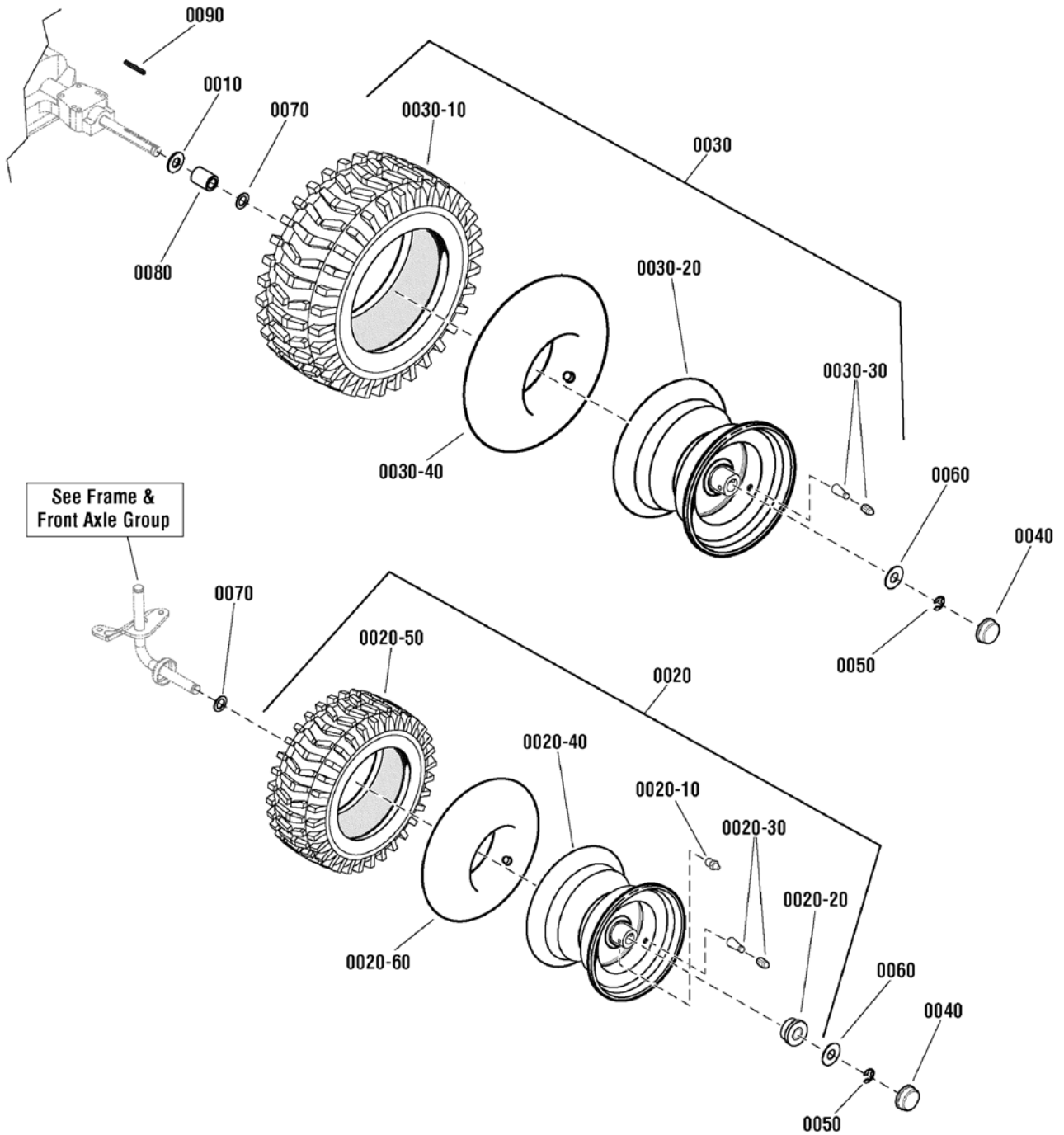
Manual No. 1758153
Revision: B 7/6/2015

Not for
Reproduction

PAGE	GROUP
4	Wheels & Tires Group
6	Hood, Grille & Dash Group - Incandescent Lights
8	Seat Deck & Fuel Tank Group
10	Steering Group
12	Frame & Front Axle Group
16	Controls Group
18	Engine Group - 17.5 Gross HP Briggs & Stratton
20	Transmission Group - Hydro Gear T2-CCHE-4X3B-1LX1
22	Transmission SERVICE PARTS - Hydro-Gear T2-CCHE-4X3B-1LX1
28	Lift Group - Manual
30	42" Mower Deck - Housing, Arbors & Blades Group
32	42" Mower Deck - Clutch Group
34	42" Mower Deck - Height Adjustment Group
36	42" Mower Deck - French Guard Group
38	French Guard
40	Decals Group
42	Electrical Group

Not for
Reproduction

Wheels & Tires Group



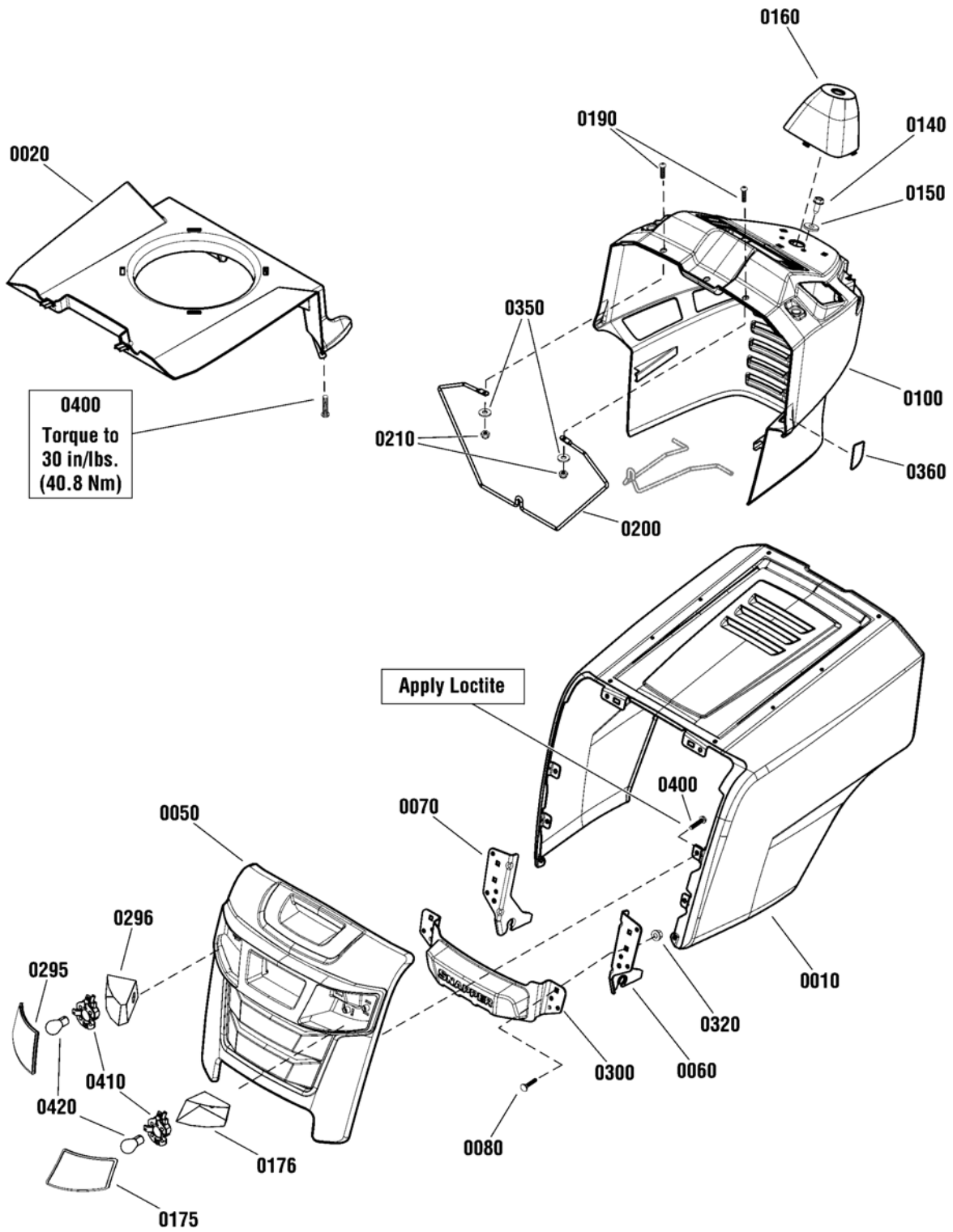
Item	Part No	Qty	Description
0010	2860202SM	2	WASHER, 3/4 x 1-5/8 OD x 1/8 Thick
0020	1729708SM	2	WHEEL & TIRE ASSEMBLY, Front
0020-10	2812808SM	1	FITTING, Lube, 1/4
0020-20	1752171YP	2	BEARING, Flange
0020-30	2172353SM	1	VALVE STEM & CAP, Air .453 Dia 0.88 Long
0020-40	----	1	WHEEL & Bearing ASSEMBLY, Front
0020-50	1731951SM	1	TIRE, 15 x 6 - 6, Turf Rider
0020-60	1664090	2	TUBE
0030	7101560YP	2	WHEEL & TIRE ASSEMBLY, 20 x 8.0-8
0030	1732324YO	2	WHEEL & TIRE ASSEMBLY, 22 x 10-8
0030-10	7101559YP	2	TIRE, 20 x 8-8, K358
0030-10	1732394SM	2	TIRE, 22 x 10-8, 2 Ply K358
0030-20	----	2	RIM
0030-30	2172353SM	2	VALVE STEM & CAP, Air .453 Dia 0.88 Long
0030-40	2164247SM	2	TUBE (Use on 20" Tires)
0030-40	2173477SM	2	TUBE (Use on 22" Tires)
0040	094618MA	4	HUB CAP
0050	0011X3MA	4	E-RING, 3/4D, 1/2T
0060	17X195MA	4	WASHER, .765 ID, 1.8 OD, .0598 Thk, Flat ZP
0070	17X160MA	4	WASHER, Flat, 3/4 x 1-1/4 x 16
0080	1730181SM	2	SPACER, 3/4 ID x 1-1/4 OD x 1.65
0090	021553MA	2	KEY, Square, 3/16

Not for
Reproduction

Footnotes:

Note* Not a serviceable part, service wheel complete

Hood, Grille & Dash Group - Incandescent Lights

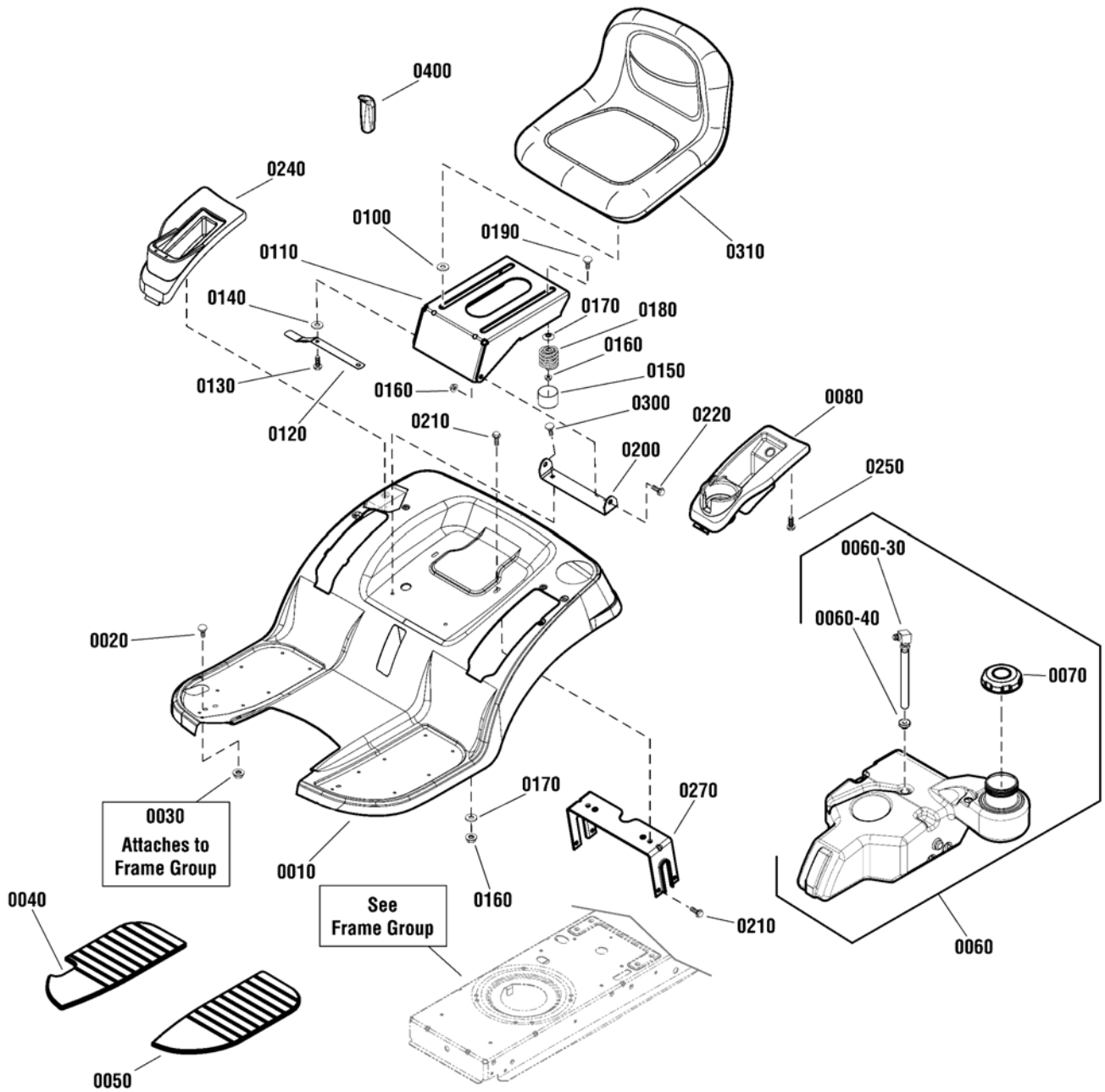


Hood, Grille & Dash Group - Incandescent Lights

Item	Part No	Qty	Description
0010	1753164DYP	1	HOOD, One Piece, Center Emboss
0020	1738734YP	1	AIR DUCT
0050	1757560YP	1	GRILLE, Front
0060	1738566AYP	1	HINGE, Hood, LH
0070	1738565AYP	1	HINGE, Hood, RH
0080	703483	2	BOLT, Carriage, 5/16 x 1, G5
0100	1753166YP	1	DASH, Nxt - Black
0140	703228	2	SCREW, Hex Washer Head Taptite, 5/16-18 x 3/4
0150	1919381SM	2	WASHER, 5/16 x 1
0160	1738790YP	1	COVER, Steering Shaft
0175	1757561YP	1	LENS, Headlight, LH
0176	1757563YP	1	INSERT, Headlight, LH
0190	1739942YP	2	SCREW, Pan Head Phillips, #10-24 x 7/8
0200	1738964YP	1	ROD, Dash Support, 1/4 Dia. x 10"
0210	1933896SM	2	NUT, Ny-Lock 10-24
0295	1757562YP	1	LENS, Headlight, RH
0296	1757564YP	1	INSERT, Headlight, RH
0300	1753169BMYP	1	BUMPER, Front
0320	1960686SM	2	NUT, Hex Flange, 5/16-18, ESNA
0350	1960353SM	2	WASHER, 1/4 x 27/32 OD
0360	1753895YP	1	TRIM, Protective
0400	1754203YP	10	SCREW, 7mm Dia. x 16mm
0410	1001716MA	2	SOCKET, Lamp
0420	1757565YP	2	BULB, Incandescent
0430	1757664YP	1	INSULATION, Thermal (Not Shown) (Used on Rev. 00)
0430	1758731YP	2	INSULATION, Thermal 2.0" X 12.5" (Not Shown) (Used on Rev. 01)

Footnotes:

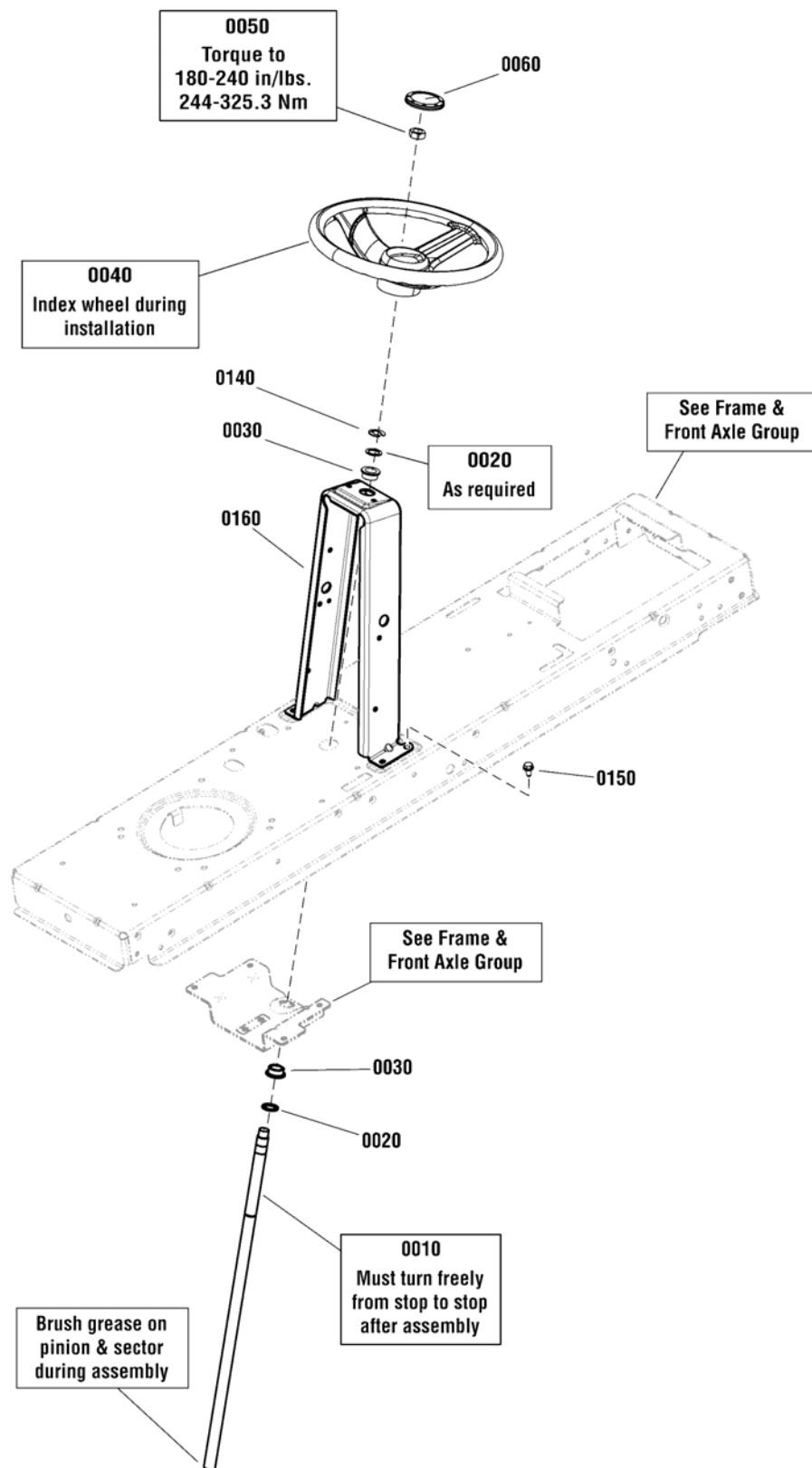
Seat Deck & Fuel Tank Group



Item	Part No	Qty	Description
0010	1727264DSM	1	DECK, Seat, Regent
0020	703185	2	BOLT, Carriage, 5/16-18 x 3/4 G5
0030	703409	2	NUT, Hex Flange Whiz Lock, 5/16-18
0040	1757595YP	1	PAD, Footrest RH
0050	1777594YP	1	PAD, Footrest LH
0060	1738932YP	1	FUEL TANK
0060-30	1736609YP	1	FITTING & HOSE ASSEMBLY
0060-40	1654930SM	1	BUSHING, Fuel Tank
0070	5101651SM	1	CAP. Fuel
0080	1739015YP	1	POD, LH
0100	1731300SM	4	SPACER, 1/40 OD
0110	1727265BMYP	1	SUPPORT, Seat
0120	1727268BMYP	1	LATCH, Seat
0130	1930595SM	4	SCREW, Hex Flange Wiz Lock, 5/16 x 1-1/4
0140	703298	4	WASHER, 5/16 x 1 OD
0150	1704724SM	2	COVER, Spring 2 Idx 1-1/2
0160	703115	6	NUT, Hex Flange, 5/16-18, ESNA
0170	1709256SM	4	WASHER, Spring, 21/64 x 1-1/4 OD
0180	1704728SM	2	SPRING, Compression, 19/32 x 2
0190	703225	2	BOLT, Carriage, 5/16-18 x 3/4, G5
0200	1727266ASM	1	PIVOT, Seat
0210	1930601SM	6	SCREW, Hex Washr Head Taptite, 5/16-18 x 5/8
0220	1729576SM	2	BOLT, Shoulder, 5/16-18 1.15Lg .50Sh .19L G5
0240	1739016YP	1	POD, RH
0250	1960536SM	6	SCREW, Hex Washr Head, 1/4 x 1/2
0270	1731310SM	1	SUPPORT, Seat Deck
0300	1931334SM	2	BOLT, Carriage, 5/16-18 x 7/8, G5
0310	1754213YP	1	SEAT, 15" Back
0400	1722302SM	1	GRIP, Handle

Footnotes:

Steering Group

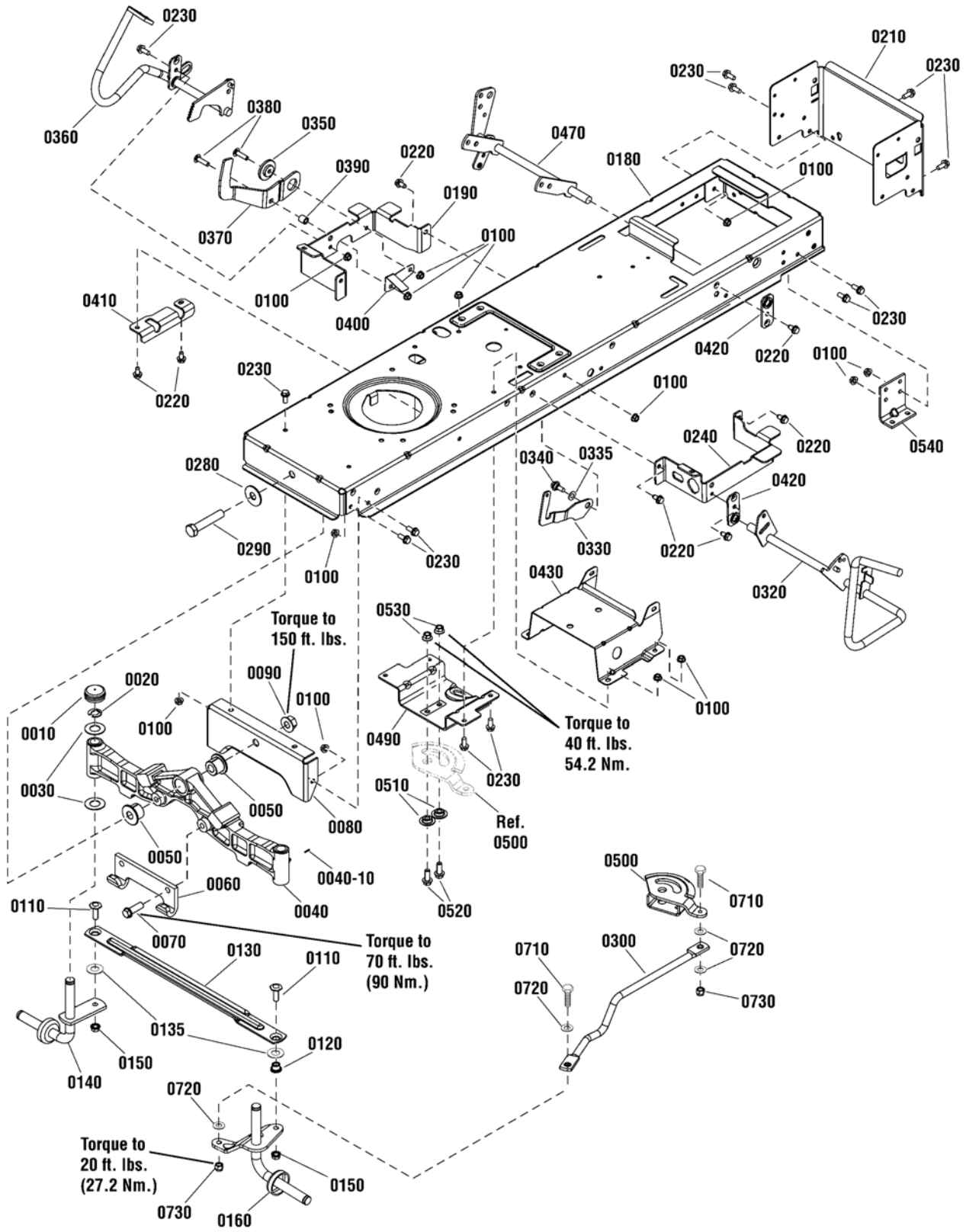


Item	Part No	Qty	Description
0010	1727813SM	1	SHAFT, Steering Gear & Spline Yellow
0020	703151	2	WASHER, Flat, 3/4
0030	1729665SM	2	BUSHING, Steering
0040	1728069SM	1	STEERING WHEEL, Aluminum Insert
0050	1960576SM	1	NUT, Hex Lock, ESNA Light, 5/8-18, Thin
0060	1725024SM	1	CAP, Steering Wheel, Plain
0140	1611710SM	1	RING, Klipring Extension
0150	1930601SM	4	CAPSCREW, Hex Washer Head, Taptite, 5/6-18 x 5/8
0160	885835BMYP	1	TOWER

Not for
Reproduction

Footnotes:

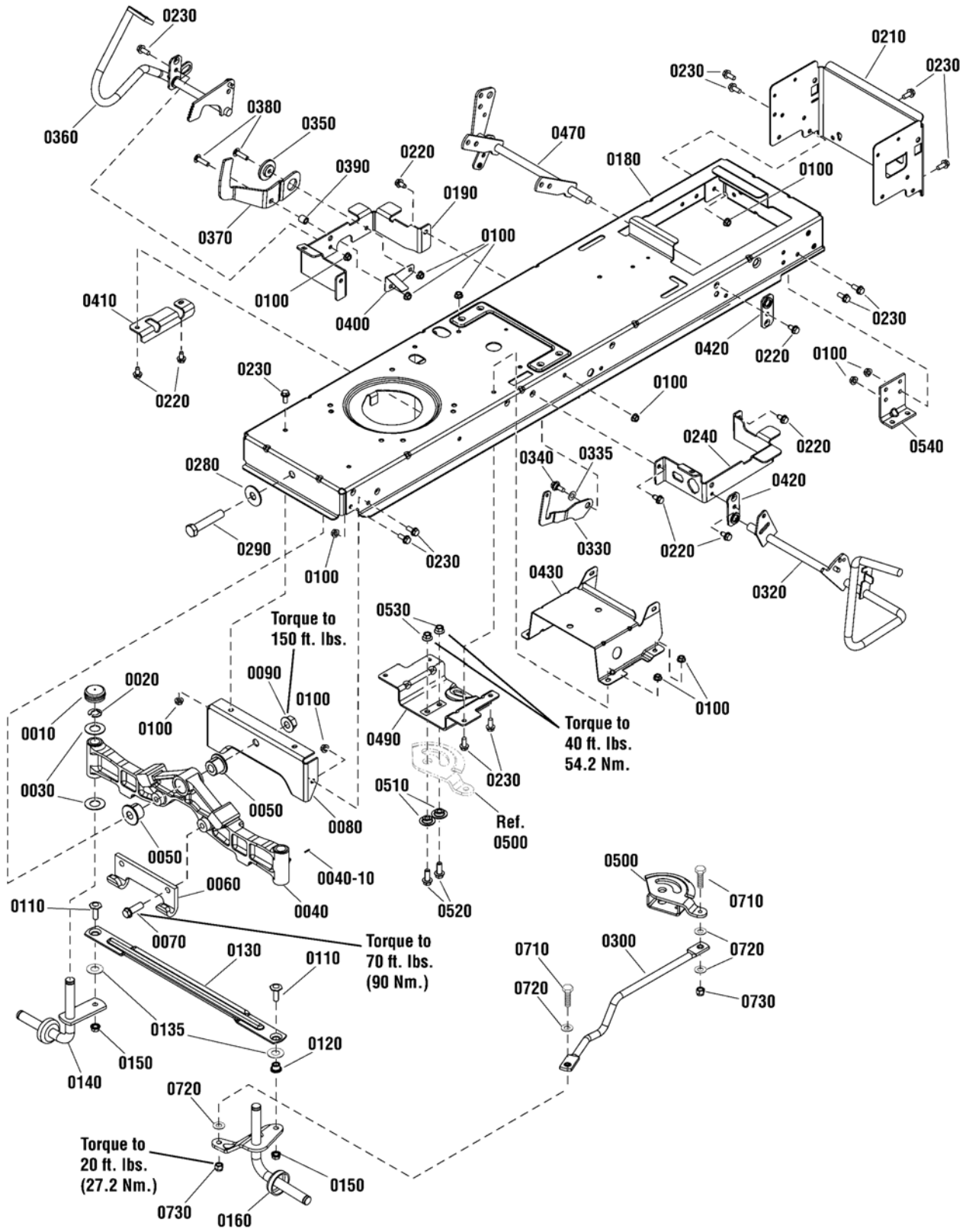
Frame & Front Axle Group



Item	Part No	Qty	Description
0010	1734135SM	2	CAP, Hub
0020	1611710SM	2	RING, Klipping Extension
0030	2860183SM	4	WASHER, 3/4
0040	1728018SM	1	AXLE, Front Iron Casting Machined
0040-10	1704314SM	3	FITTING, Zerk
0050	1730186SM	2	BUSHING, Axle Pivot
0060	1721918ASM	1	HOOK, "J"
0070	1960652SM	2	CAPSCREW, 7/16-14 x 1-1/2
0080	1727902SM	1	PLATE, Axle Support
0090	2860646SM	1	NUT, Hex Flange Two-Way Lock, 5/8-11
0100	703409	24	NUT, Hex, Flange Whizlock, 5/16-18
0110	1960032SM	2	CAPSCREW, Hex Head, 3/8-16 x 1-1/4, .141 Thread G5
0120	1731912SM	2	BUSHING, Powdered Metal
0130	1751964YP	1	ROD, Tie
0135	1960703SM	1	WASHER, 5/8, 1 O.D.
0140	1727872ASM	1	SPINDLE & CUP ASSEMBLY, R.H.
0150	1930645SM	2	NUT, Hex, Flange, Locking, 3/8-16
0160	1751922YP	1	SPINDLE & STEERING ARM ASSEMBLY, L.H.
0180	-----	1	FRAME (Not a serviceable part)
0190	1727904SM	1	SUPPORT, Front Footrest R.H.
0210	1750989YP	1	SUPPORT, Rear Frame
0220	1930601SM	9	SCREW, Taptite, 5/16-18 x 5/8
0230	703354	14	CAPSCREW, Hex Head, Flange Whiz Lock, 5/16-18 x 3/4
0240	885536AYP	1	SUPPORT, Front Footrest L.H.
0280	1960035SM	1	WASHER, Flat, 5/8
0290	2860744SM	1	CAPSCREW, Hex Head, 5/8-11 x 3-1/4 G5
0300	1738051YP	1	LINK, Drag
0320	1736404AYP	1	PEDAL ASSEMBLY, Brake
0330	1735595YP	1	LATCH, Brake Lock
0335	7014296YP	1	WASHER, Shim
0340	1729576SM	1	BOLT, Shoulder, 5/16-18 x 1-1/8
0350	1727935SM	1	SPACER, Pivot
0360	1736714AYP	1	PEDAL ASSEMBLY, Forward
0370	1727246SM	1	PEDAL, Reverse
0380	1960223SM	2	BOLT, Carriage, 5/16-18 x 1-1/4
0390	1728024SM	2	SPACER, Foot Pedal
0400	1728025SM	1	ACTUATOR, RMO Switch
0410	1727909SM	1	BRACKET, Pedal Pivot
0420	1727911SM	2	PLATE, Bearing
0430	1727282SM	1	SUPPORT, Battery
0470	1737957YP	1	LIFT SHAFT ASSEMBLY
0490	1727940SM	1	BRACKET, Sector Support
0500	1751110YP	1	GEAR, Steering
0510	1728122SM	2	SPACER, Sector Gear

Footnotes:

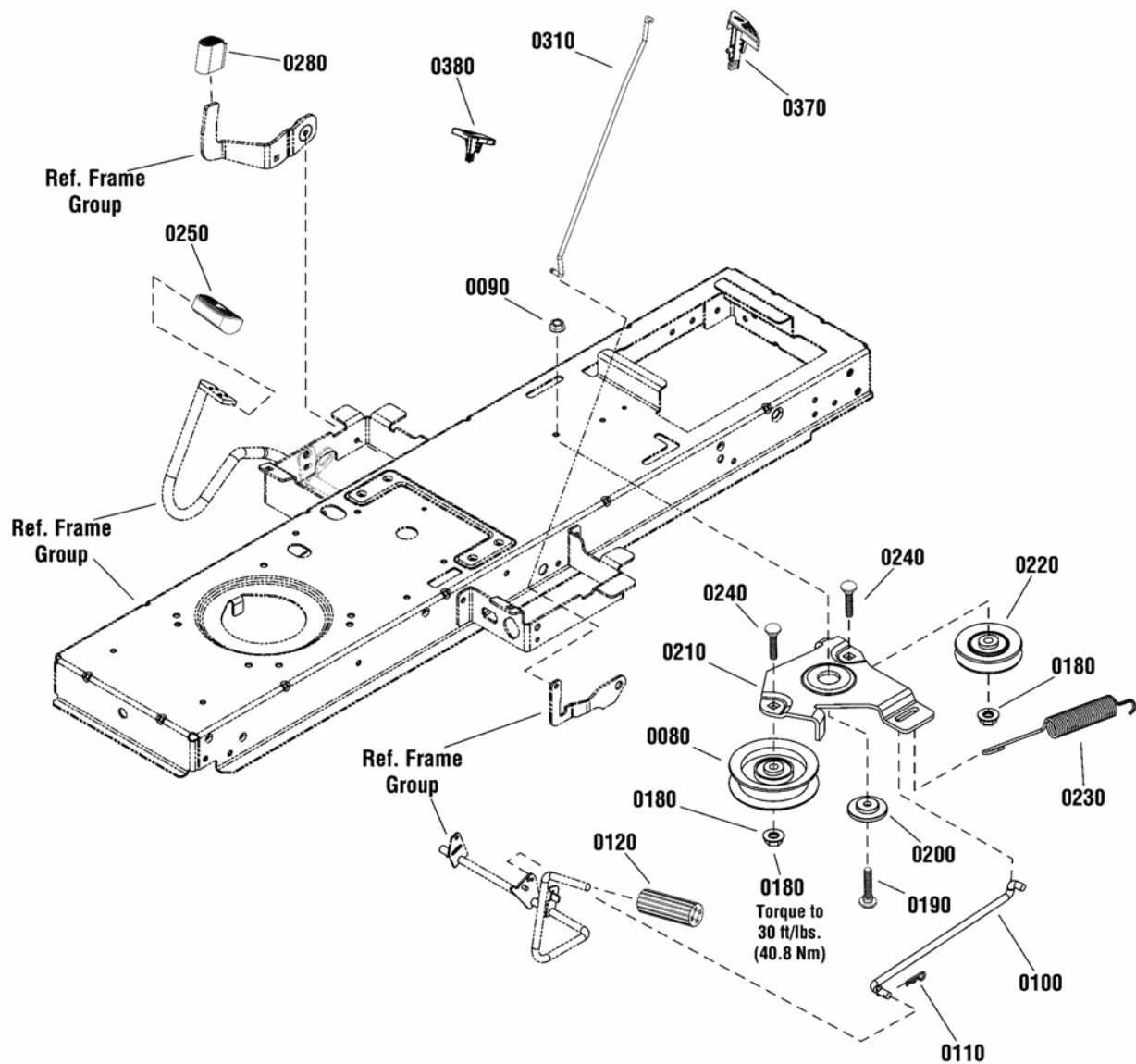
Frame & Front Axle Group



Item	Part No	Qty	Description
0520	1934654SM	2	SCREW, Hex Flange, Whiz Lock, 3/8-16 x 1
0530	1930645SM	2	NUT, Hex Flange, Two-Way Locking, 3/8-16
0540	1727903SM	1	SUPPORT, Transmission
0710	1921977SM	2	CAPSCREW, Hex Head, 5/16-18 x 1-1/4, G5
0720	1919326SM	4	WASHER, 5/16 x 7/8 O.D.
0730	1935048SM	2	NUT, Hex Flange, Two Way Locking, 5/16-18

Not for
Reproduction

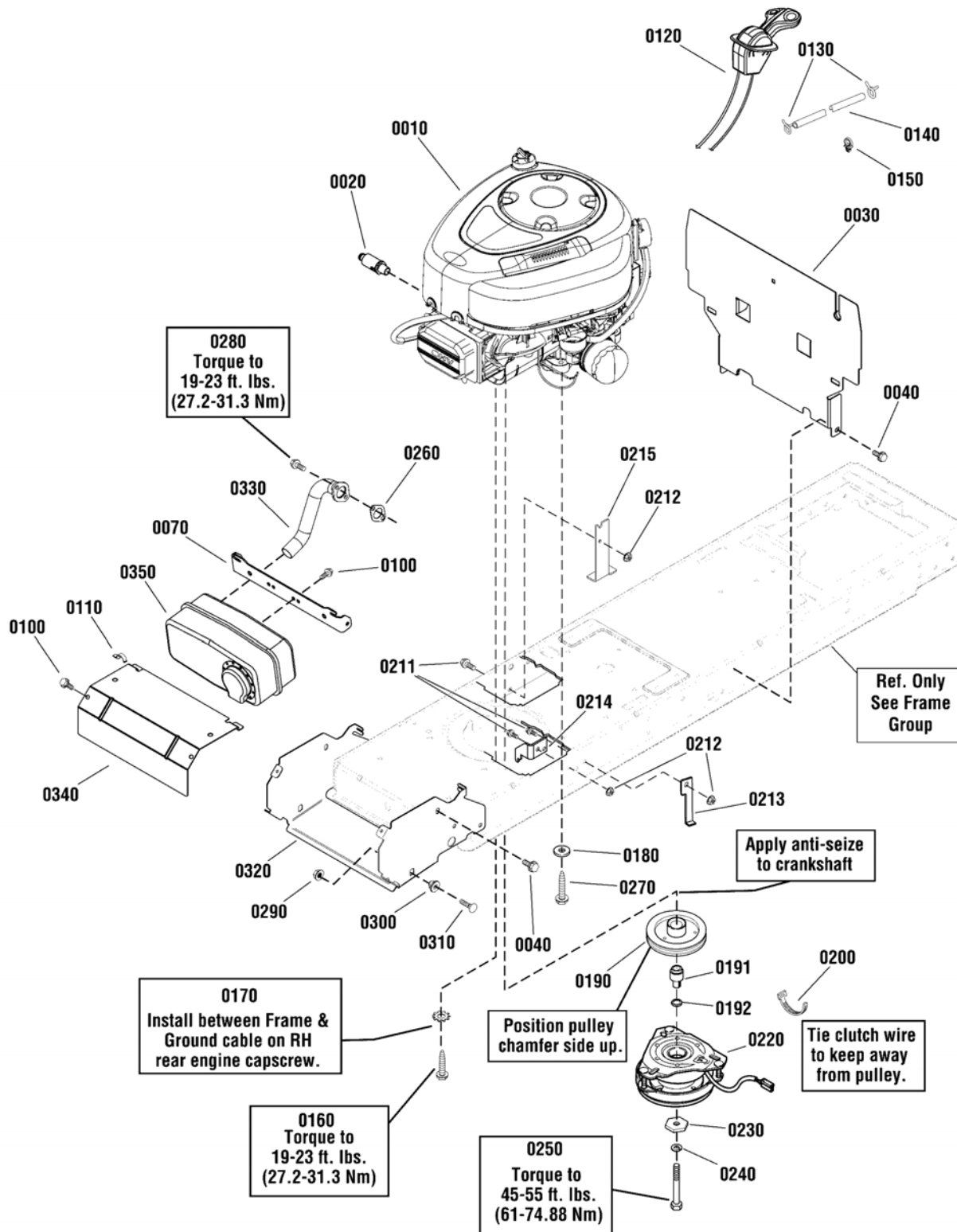
Footnotes:



Item	Part No	Qty	Description
0080	1728000SM	1	PULLEY, Idler
0090	690272MA	1	NUT, Flange, 5/16-18, GR5
0100	1727254SM	1	ROD, Brake Return
0110	1722460SM	1	HAIRPIN
0120	1727261SM	1	PEDAL, Brake
0180	703158	2	NUT, Hex Flange, 3/8-16
0190	703800	1	BOLT, Carriage, 5/16-18 X 1
0200	1727935SM	1	SPACER, Pivot
0210	1727894SM	1	BRACKET, Idler
0220	1728001SM	1	PULLEY, 3"
0230	1729620SM	1	SPRING, Extension
0240	1931352SM	2	BOLT, Carriage, 3/8-16 X 1 1/2
0250	1721675SM	1	PAD, Foot Pedal Forward
0280	1727259SM	1	PAD, Foot Pedal Reverse
0310	1739876YP	1	ROD, Parking Brake
0370	1738789YP	1	KNOB, Brake
0380	1758788YP	1	KNOB, Cruise

Not for
Reproduction

Footnotes:



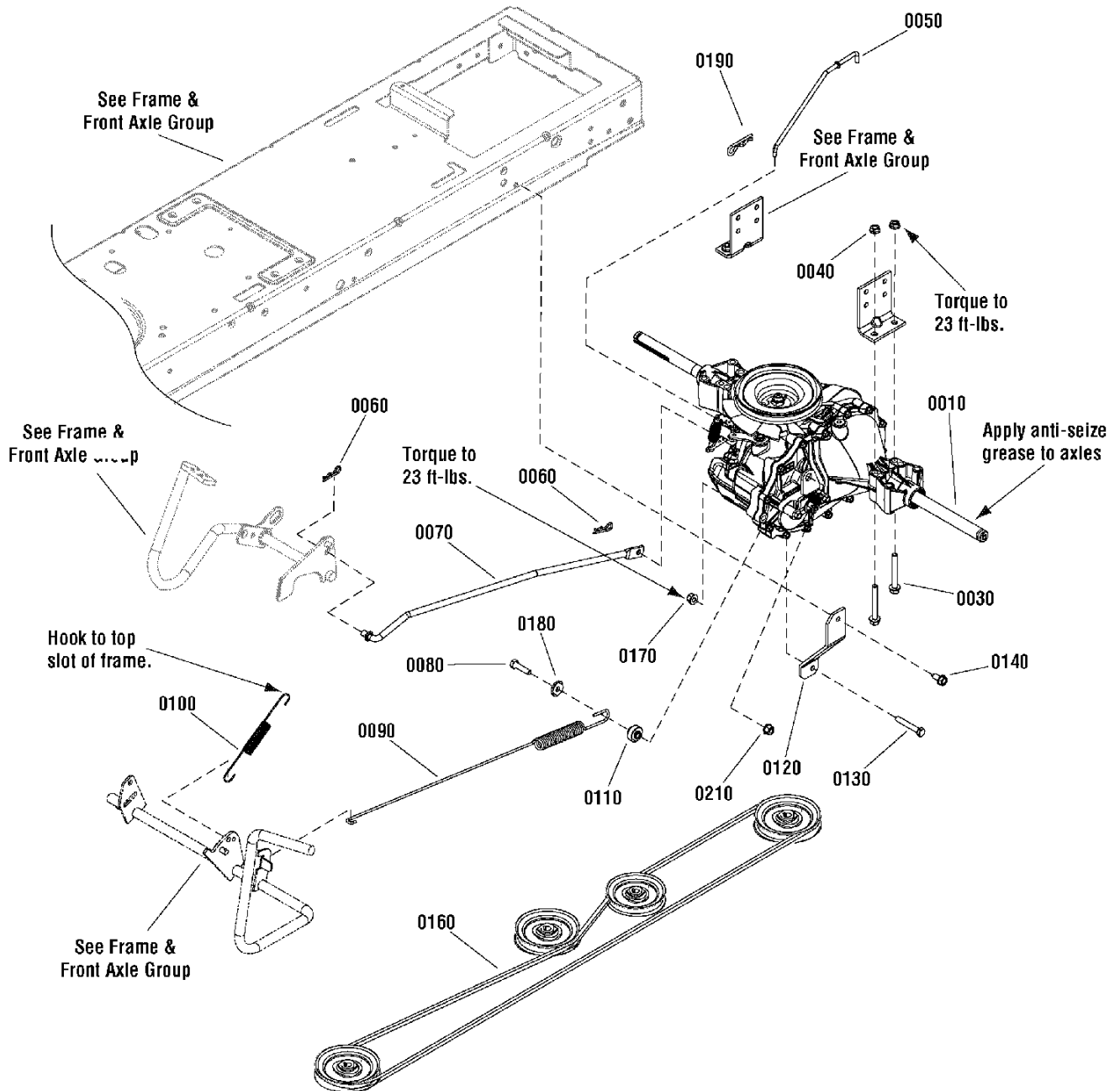
Engine Group - 17.5 Gross HP Briggs & Stratton

Item	Part No	Qty	Description
0010	31R777-0022-B1	1	*ENGINE, 17.5 Gross HP B&S, Single, Choke-A-Matic (Engine Model: 31R777-0022-B1)
0020	1750159YP	1	DRAIN VALVE ASSEMBLY
0030	1738380AYP	1	HEAT SHIELD, Engine
0040	703949	8	SCREW, Washer, 5/16-18 X 5/8
0070	1728265BMYP	1	SUPPORT, Muffler
0100	704130	4	SCREW, Taptite, 1/4-20 x 1/2
0110	703176	1	CLIP, Wire
0120	1738794YP	1	CONTROL, Throttle
0130	93053B	2	CLAMP, Hose
0140	706024	1	HOSE, Fuel, 49.5"
0150	1730268SM	1	CLIP, Hose
0160	2827187SM	2	SCREW, Taptite, 3/8-16 X 1
0170	703864	1	WASHER, External Tooth, 3/8
0180	703878	1	WASHER, Flat, 13/32
0190	1732576SM	1	PULLEY & HUB ASSEMBLY
0191	885679YP	1	SPACER, Electric Clutch
0192	885810YP	1	SPACER, Electric Clutch Lower
0200	703586	1	TIE, Self Locking
0211	704287	4	CAPSCREW, Hex Head, 5/16-18 X 3/4
0212	703409	6	NUT, Flange, 5/16-18, GR5
0213	1757405BMYP	1	BRACKET, Upstop
0214	885535AYP	1	BRACKET, Electric Clutch
0215	1757404BMYP	1	BRACKET, Upstop
0220	1736105SM	1	CLUTCH, Electric
0230	1708264SM	1	WASHER, Hex
0240	1918199SM	1	WASHER, Lock
0250	7102075YP	1	CAPSCREW, Hex Head, 7/16-20 X 5
0260	1731214SM	1	GASKET, Exhaust
0270	2828635SM	2	SCREW, Taptite, 3/8-16 x 1 /14
0280	690341	2	SCREW, Hex, 5/16-18 X 7/8
0290	703409	2	NUT, Flange, 5/16-18, GR5
0300	1728086SM	2	PIVOT, Hood
0310	703800	2	BOLT, Carriage, 5/16-18 X 1
0320	1738265AYP	1	SUPPORT, Muffler & Hood
0330	1728959SM	1	PIPE, Exhaust
0340	1738380BMYP	1	SHIELD, Heat
0350	1727993SM	1	MUFFLER

Footnotes:

Note* To verify your specific engine model, please reference the ID Tag located on your engine. See your local Briggs & Stratton distributor for parts and service.

2988052



Transmission Group - Hydro Gear T2-CCHE-4X3B-1LX1

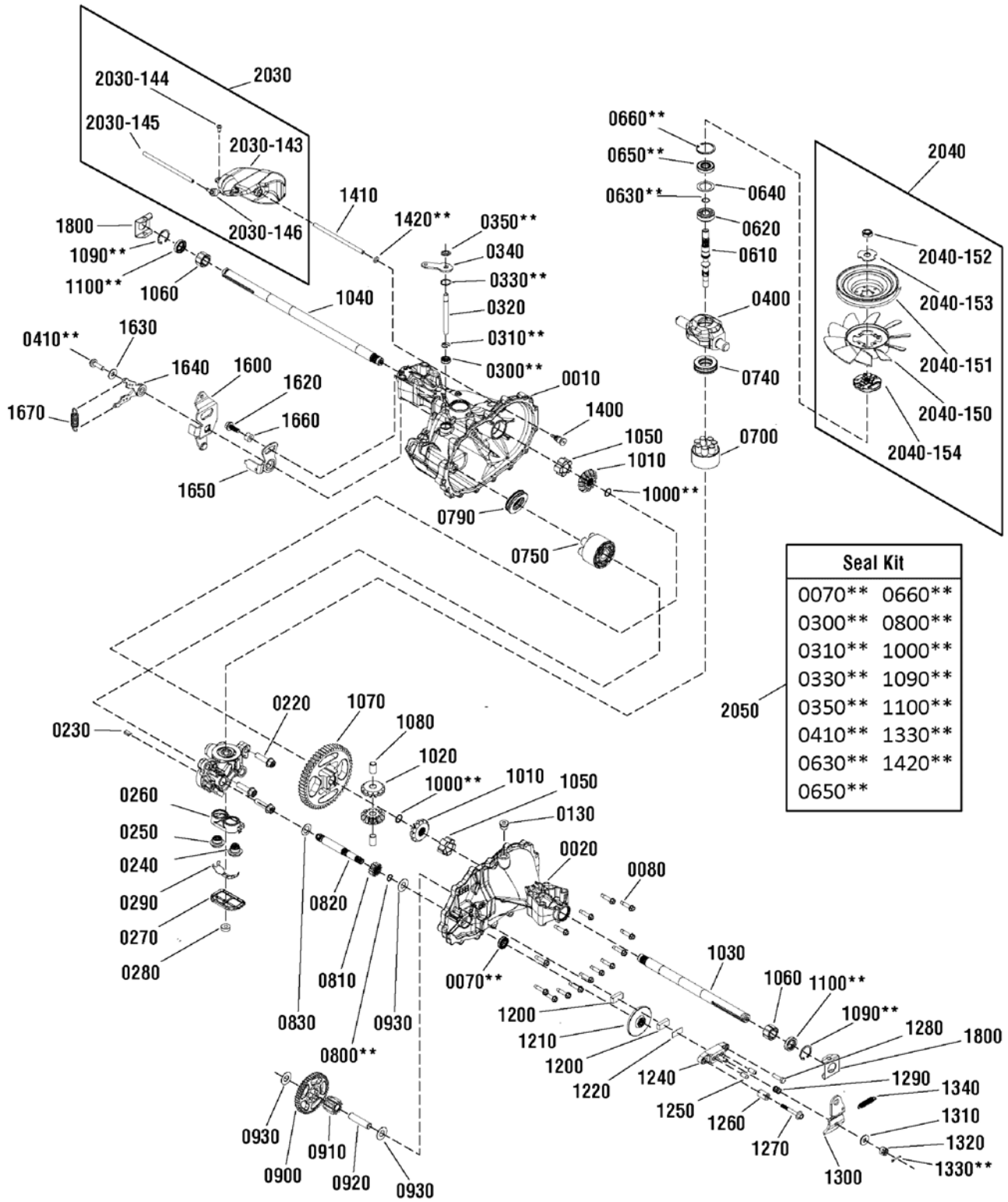
Item	Part No	Qty	Description
0010	1736637	1	* TRANSMISSION, Hydro Gear
0030	1960586	4	CAPSCREW, Hex Head Whiz Lock, 5/16-18 x 2-1/2
0040	1931277	4	NUT, Hex Flange, 5/16-18
0050	1736716	1	ROD, Free Wheel
0060	1722460	2	PIN, Quick
0070	1750545	1	ROD, Speed Control
0080	1921977	1	CAPSCREW, Hex Head, 5/16-18 x 1-1/4
0090	1736409	1	SPRING, Extension
0100	1721995	1	SPRING, Extension, 6-5/8 Lg
0110	1736854	1	SPACER
0120	1736410A	1	STRAP, Torque
0130	1921978	1	CAPSCREW, Hex Head, 5/16-18 x 2
0140	1664847	1	CAPSCREW, Hex Head, Taptite, 5/16-18 x 3/4
0160	1737441	1	V-BELT, Drive Belt, HA, 88.46
0170	1960686	1	NUT, Hex Flange, 5/16-18
0180	1919381	1	WASHER, Flat, 5/16 x 1 OD
0190	1960221	1	CLIP, Hair Pin, 5/8 Dia. x 1-5/16 Lg
0210	720145	1	NUT, Hex Center Lock, 5/16-18

Not for
Reproduction

Footnotes:

*Note: See your local authorized dealership for parts and warranty.

Transmission SERVICE PARTS - Hydro-Gear T2-CCHE-4X3B-1LX1



Transmission SERVICE PARTS - Hydro-Gear T2-CCHE-4X3B-1LX1

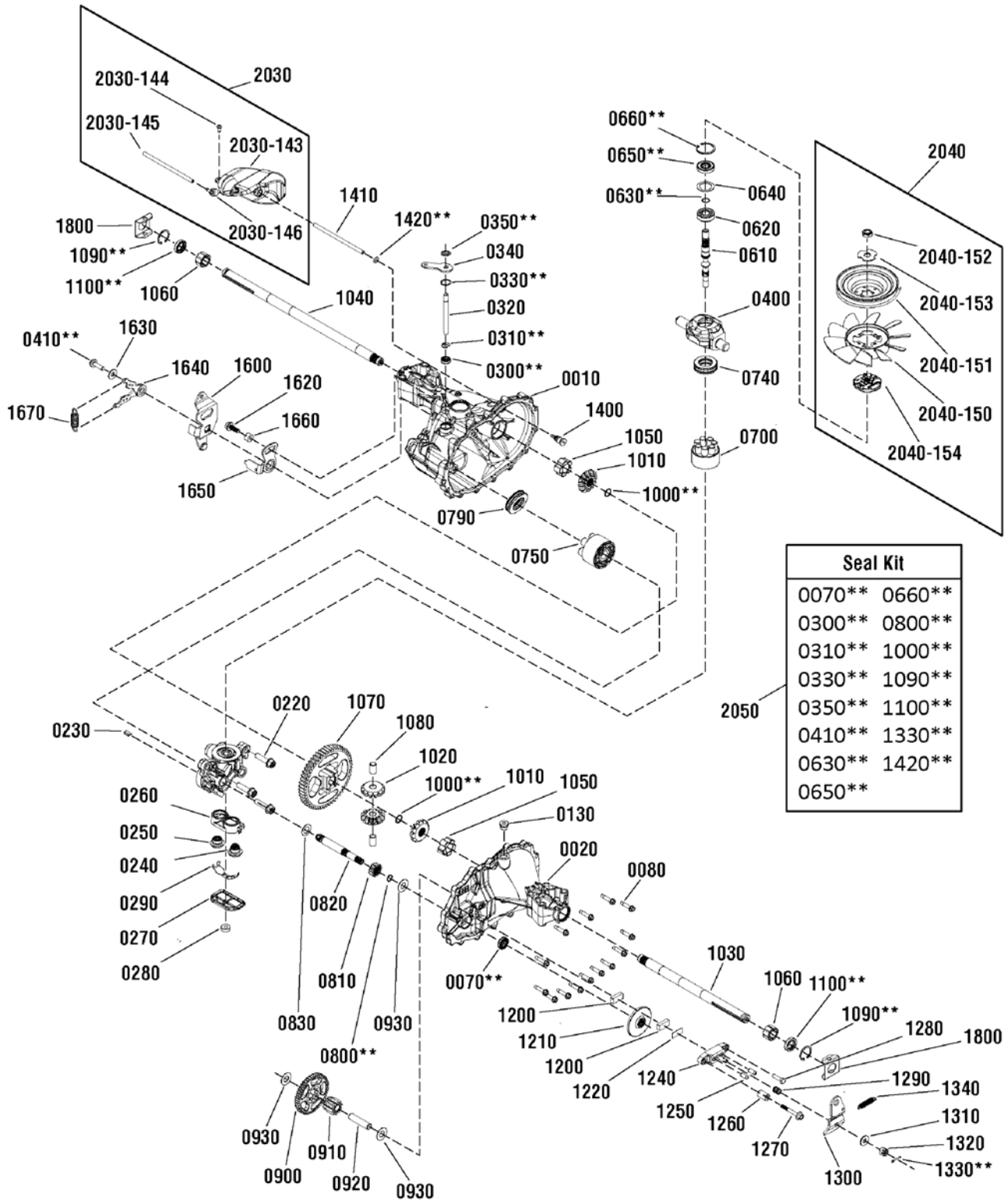
Item	Part No	Qty	Description
0010	----	1	* MAIN HOUSING
0020	----	1	* SIDE HOUSING
0070	----	1	** SEAL, Lip, 1/2 x 1 x 1/4
0080	----	14	* SCREW, Hex Washer, 1/4-20 x 1-1/8
0130	----	1	* PLUG, 9/16-18
0210	----	1	* BEARING, Journal
0220	----	3	* BOLT, Hex Flange, 3/8-16
0230	----	1	* PLATE, Bypass
0240	----	1	* CHECK PLUG & WASHER ASSEMBLY, .027
0250	----	1	* CHECK PLUG & WASHER ASSEMBLY
0260	----	1	* BASE, Filter
0270	----	1	* COVER, Filter
0280	----	1	* RING, Magnet
0290	----	1	* DEFLECTOR
0300	----	1	** SEAL, Lip, 3/8 x 3/4 x 1/4
0310	----	1	** RING, Retainer, 3/8
0320	----	1	* ROD, Actuator Bypass
0330	----	1	** RING, Retainer, 3/4
0340	----	1	* ARM, Bypass
0350	----	1	** RING, Retainer, 3/8
0400	----	1	* TRUNNION, Swash Plate
0410	----	1	** SCREW, 5/16-18 x 1
0610	1752308	1	SHAFT, Input
0620	1715142	1	BALL BEARING, 15 x 35 x 11
0630	1715141	1	** RING, Retaining Wire, .512 ID
0640	1706172	1	* WASHER, Spacer, 1-15/64 x 9/16
0650	1706173	1	** SEAL, Lip, 15 x 35 x 7
0660	----	1	** RING, Retainer, 1-9/16, INT
0700	----	1	* KIT, Block, 7 Piston, 8cc
0740	----	1	* BEARING, Thrust Ball, 27 x 47 x 14
0750	----	1	* PISTON BLOCK ASSEMBLY
0790	1715144	1	BEARING, Thrust Ball, 30 x 52 x 13
0800	----	1	** RING, Retainer, 1/2, EXT
0810	----	1	* GEAR, 13T Pinion
0820	----	1	* SHAFT, Motor
0830	----	1	* WASHER, .60 x 1
0900	----	1	* GEAR, 10T / 48T
0910	----	1	* GEAR, Jackshaft, 10T
0920	----	1	* JACKSHAFT, Pin
0930	1715169	3	WASHER, 7/16 x 1 x 1/2
1000	----	2	** RING, Retainer, Spiral, 5/8, EXT
1010	----	2	* GEAR, Bevel, 12T, Spline OD
1020	----	2	* GEAR, Bevel, 12T, 1/2 OD
1030	----	1	* SHAFT, Axle, Keyed, 12-9/64 x 3/4

Footnotes:

Note* See your local authorized dealership for parts and warranty or contact Hydro Gear at www.hydro-gear.com/Support/NorthAmerica.aspx (U.S. 1-877-728-7410 Int'l 32 (0) 12 670 631)

Note** Not a serviceable part, order seal kit, ref # 2050

Transmission SERVICE PARTS - Hydro-Gear T2-CCHE-4X3B-1LX1



Transmission SERVICE PARTS - Hydro-Gear T2-CCHE-4X3B-1LX1

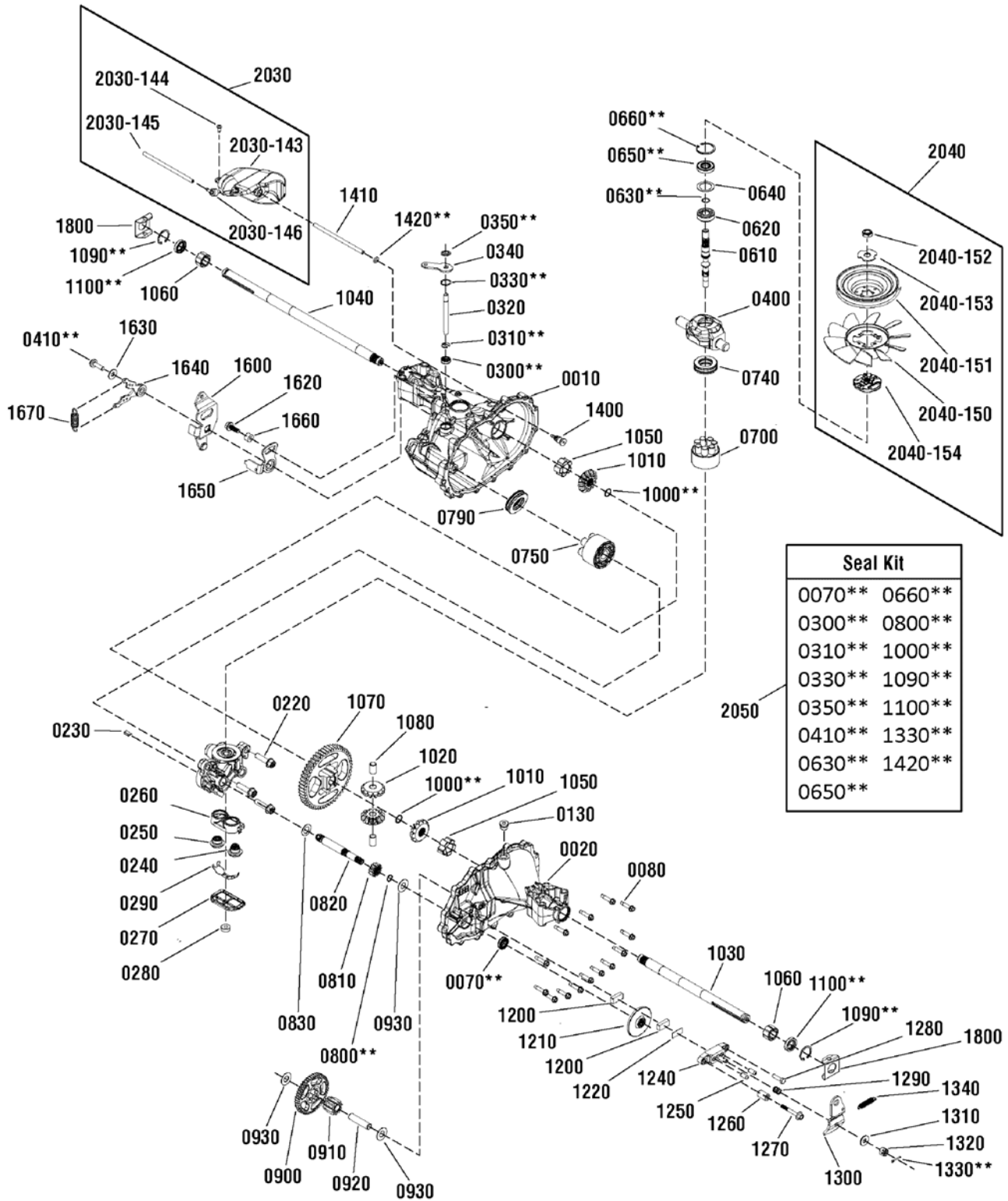
Item	Part No	Qty	Description
1040	----	1	* SHAFT, Axle, Keyed, 17-3/4 x 3/4
1050	----	2	* BUSHING, Inboard
1060	----	2	* BUSHING, Outboard
1070	----	1	* GEAR, 54T, Bull
1080	----	2	* PIN, Differential
1090	----	2	** RING, Retainer, INT, Axle
1100	----	3	** SEAL, Lip, 3/4 x 1-1/8 x 1/4
1200	1706146	2	PUCK, Brake
1210	----	1	* ROTOR, Brake
1220	1706145	1	PLATE, Brake Puck
1240	----	1	* YOKE, Brake
1250	1706141	2	PIN, Brake, 5/16 x 3/4
1260	1715199	1	SPACER, Brake Torsion Spring, 1/4 x 9/16
1270	----	1	* SCREW, Patch, 1/4-20 x 2
1280	1706147	1	SCREW, Patch, 1/4-20 x 1
1290	----	1	* SPRING, Compression, Brake, Anti-Drag
1300	----	1	* ARM, Brake
1310	----	1	* WASHER, 11/32 x 7/8
1320	1714431	1	NUT, Castle, 5/16-24
1330	----	1	** PIN, Cotter, 3/32 x 3/4
1340	----	1	* SPRING, Brake Arm
1400	----	1	* FITTING, Hydraulic, O-Ring Adapter, 5/16
1410	----	1	* HOSE
1420	----	1	** O-Ring, .103 x .299 ID
1600	----	1	* ARM, Control
1620	----	1	* BOLT, Hex Flange Head
1630	----	1	* WASHER, 11/32 x 7/8 (Duplicate of #131)
1640	----	1	* ROTATION ASSEMBLY
1650	----	1	* NEUTRAL ARM ASSEMBLY
1660	----	1	* BUSHING
1670	----	1	* SPRING, Extension
1800	1752309	2	CLIP, Spring, Housing Thrust
2030	1752310	1	E-TANK KIT (Includes ref # 2030-143, 2030-144, 2030-145 & 2030-146)
2030-143	----	1	TANK EXPANSION (Not a serviceable part, order kit #2030)
2030-144	----	1	BOLT, 10-32 x 1/2 (Not a serviceable part, order kit #2030)
2030-145	----	1	TUBE (Not a serviceable part, order kit #2030)
2030-146	----	1	CAP, Barbed Vent (Not a serviceable part, order kit #2030)
2040	1752311	1	FAN & PULLEY KIT (Includes ref # 2040-150, 2040-151, 2040-152, 2040-153 & 2040-154)
2040-150	----	1	* FAN, 7", 10 Blade (Not a serviceable part, order kit #2040)
2040-151	----	1	* PULLEY, 4.4" (Not a serviceable part, order kit #2040)
2040-152	----	1	* NUT, Nylock, 1/2-20 (Not a serviceable part, order kit #2040)
2040-153	----	1	* WASHER, OD Slotted (Not a serviceable part, order kit #2040)
2040-154	----	1	* HUB, Pulley, 1-9/16 (Not a serviceable part, order kit #2040)

Footnotes:

Note* See your local authorized dealership for parts and warranty or contact Hydro Gear at www.hydro-gear.com/Support/NorthAmerica.aspx (U.S. 1-877-728-7410 Int'l 32 (0) 12 670 631)

Note** Not a serviceable part, order seal kit, ref # 2050

Transmission SERVICE PARTS - Hydro-Gear T2-CCHE-4X3B-1LX1



Transmission SERVICE PARTS - Hydro-Gear T2-CCHE-4X3B-1LX1

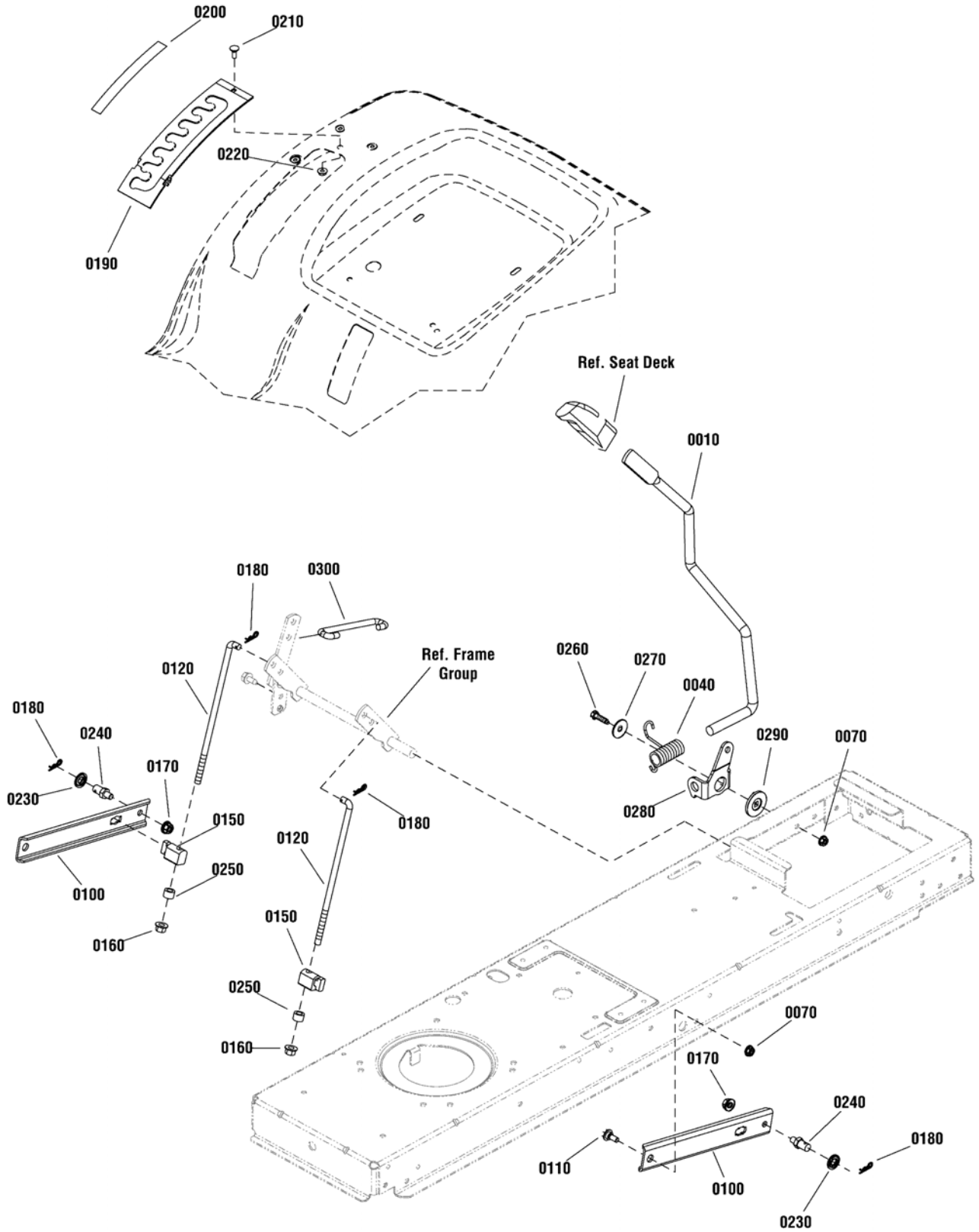
Item	Part No	Qty	Description
2050	1752312	1	SEAL KIT (Includes items marked with **)

Not for
Reproduction

Footnotes:

Note* See your local authorized dealership for parts and warranty or contact Hydro Gear at www.hydro-gear.com/Support/NorthAmerica.aspx (U.S. 1-877-728-7410 Int'l 32 (0) 12 670 631)

Note** Not a serviceable part, order seal kit, ref # 2050

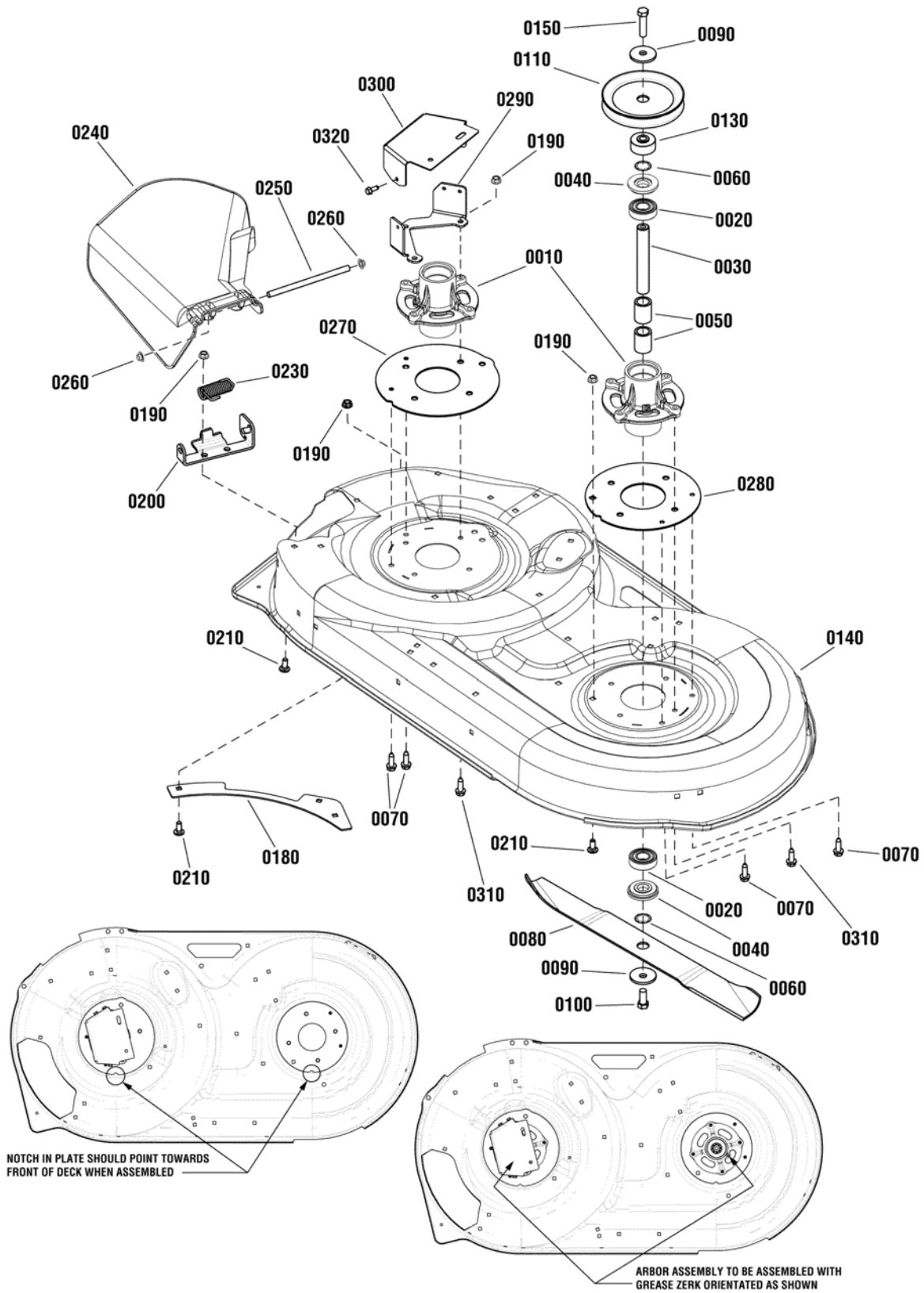


Item	Part No	Qty	Description
0010	1728070SM	1	ROD, Lift Handle, 17.7
0040	1729652SM	1	SPRING, Torsion, 2.12 Inch
0070	1931277SM	3	NUT, Hex Flange, 5/16-18
0100	1758146BMYP	2	ARM, Rear Lift (Use on 42" Models Only)
0100	1731417BMYP	1	ARM, Rear Lift
0110	1732426SM	2	BOLT, Shoulder
0120	1727955SM	2	ROD, Lower Lift, 10.00 LG
0150	1731894SM	2	TRUNNION
0160	1960687SM	2	NUT, Hex Flange, ESNA, 3/8-16
0170	1931211SM	2	NUT, Hex, Flange Lock, 3/8-16
0180	1960074SM	4	CLIP, Spring
0190	1727985SM	1	QUADRANT, Lift Height
0200	1730264SM	1	DECAL, Height Of Cut
0210	1960252SM	1	BOLT, Carriage, 1/4-20 x 5/8, G5
0220	1930641SM	1	NUT, Hex Flange Whiz, 1/4-20
0230	1960170SM	2	WASHER, 1/2
0240	094067MA	2	PIN, Threaded Shoulder
0250	1666294SM	2	SPACER
0260	1921333SM	1	CAPSCREW, Hex Head, 5/16-18 x 1
0270	1960044SM	1	WASHER, Plain, 21/64 x 1-1/4
0280	1728990ASM	1	CLEVIS, Lift
0290	1727935SM	1	SPACER, Pivot, 5/16 ID, 1-3/4 OD
0300	1727954SM	1	ROD, Lift, 5.43 LG

Not for
Reproduction

Footnotes:

42" Mower Deck - Housing, Arbors & Blades Group



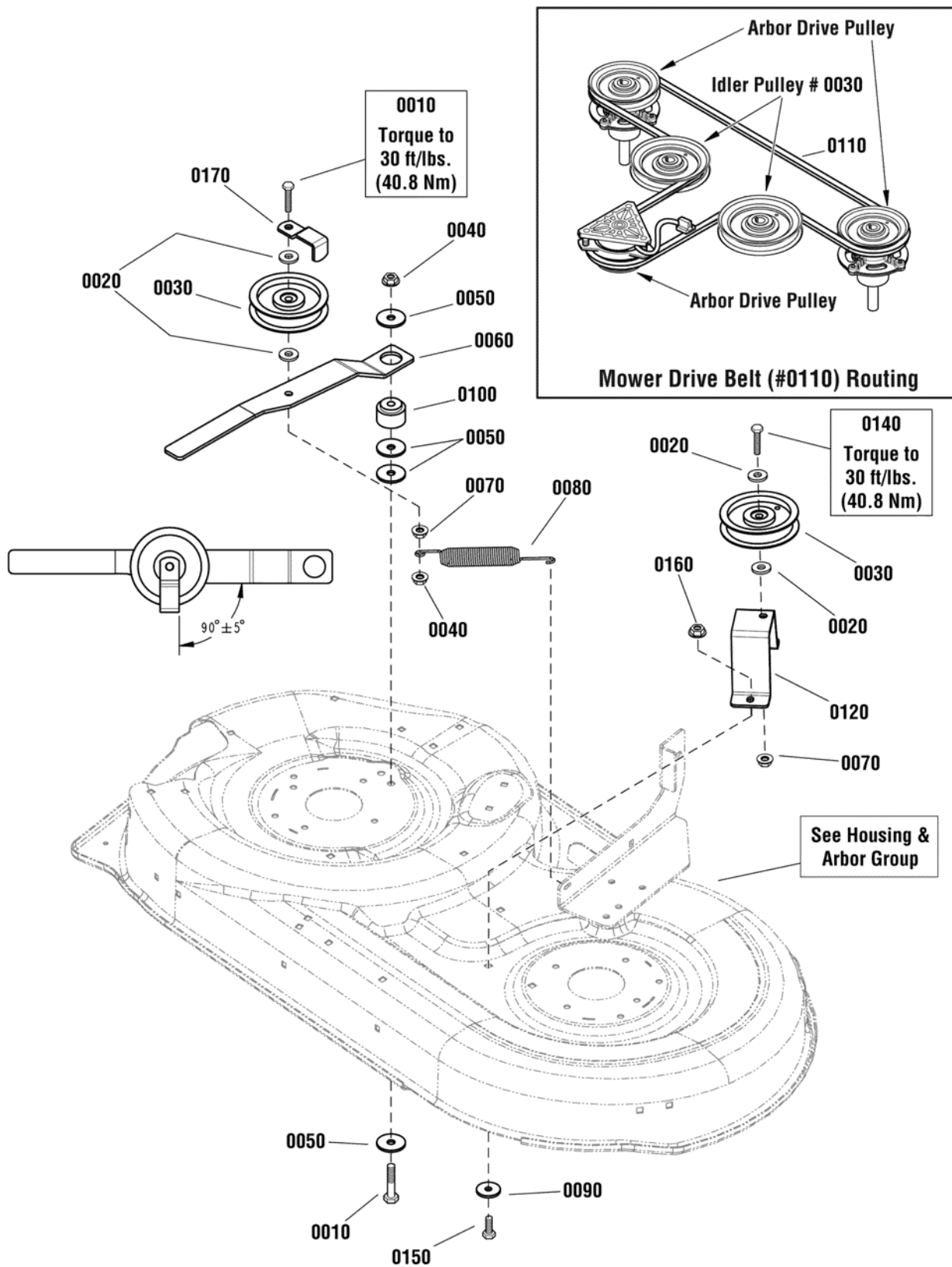
42" Mower Deck - Housing, Arbors & Blades Group

Item	Part No	Qty	Description
0010	1735573	2	HOUSING, Spindle
0020	1735399	4	BEARING, Ball, 20mm
0030	1735326	2	SHAFT, Spindle
0040	1735323	4	SHIELD, Arbor
0050	1735328	4	SPACER, Bearing
0060	1960766	4	RING, Self Lock
0070	1960373	4	SCREW, Hex Washer Head, Taptite, 5/16-18 x 1
0080	1737816BMYP	2	BLADE, 42"
0090	1656916	4	WASHER, Spring, 1/2
0100	1920676	2	CAPSCREW, Hex Head, 7/16-14 x 1, G5
0110	1737835	2	PULLEY, V, Deep Groove
0130	1737457	2	SPACER, Pulley
0140	1736504D	1	HOUSING, Mower Deck, 42
0150	1923027	2	CAPSCREW, Hex Head, 7/16-14 x 1-3/4, G5
0180	721083A	2	PLATE, Rear
0190	1931277	10	NUT, Hex Flange, Whiz Lock, 5/16-18
0200	721369A	1	BRACKET, Hinge
0210	1931333	6	BOLT, Carriage, Short Neck, 5/16-18 x 3/4 G5
0230	720154	1	SPRING, Torsion
0240	721339	1	DEFLECTOR & SUPPORT ASSEMBLY
0250	721371	1	ROD, Deflector
0260	1960093	2	NUT, Push Pal, 3/8
0270	1750457BM	1	PLATE, Spindle, RH
0280	1750458BM	1	PLATE, Spindle, LH
0290	1752065BM	2	BRACKET, Guard Mount
0300	1752034BM	2	COVER, Mower Spindle
0310	1930600	8	SCREW, Hex Washer Head, Taptite, 5/16-18 x 1-1/2
0320	722866	6	SCREW, Hex, 1/4-20 x 5/8

Footnotes:

0080 ブレード品番修正 2016/02/15 BSJ

42" Mower Deck - Clutch Group

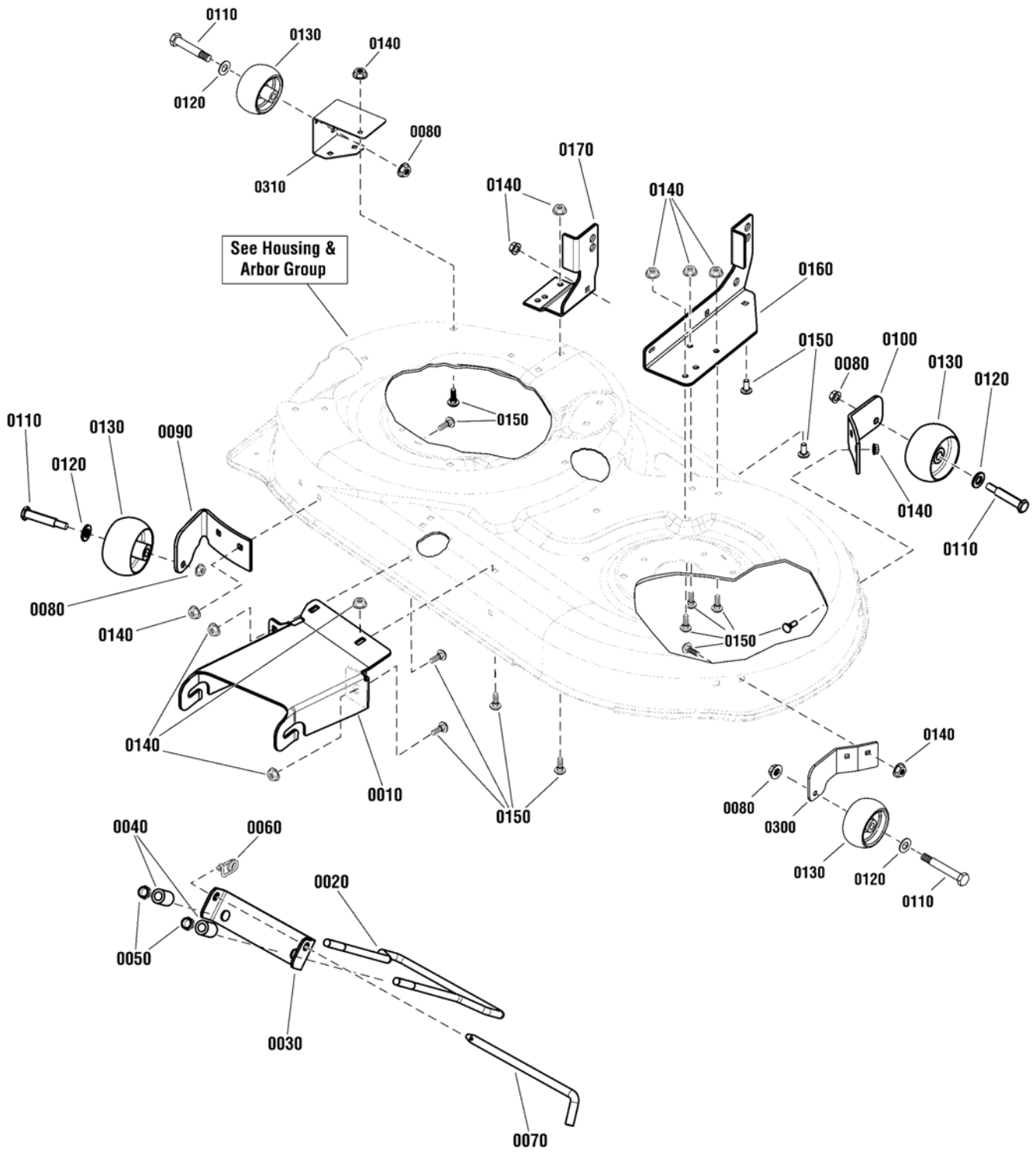


Item	Part No	Qty	Description
0010	1922130	2	CAPSCREW, Hex Head, 3/8-16 x 2-1/4, G5
0020	1922755	4	WASHER, 3/8
0030	7018574	2	IDLER, Flat, 4.12
0040	1960339	2	NUT, Hex Flange, Mac Lock, 3/8-16
0050	1924356	4	WASHER, 3/8
0060	1731944A	1	ARM, Idler
0070	1931211	2	NUT, Hex Flange, Whiz Lock, 3/8-16
0080	1731311	1	SPRING, Extension, 7-3/4"
0090	1933468	2	WASHER, 5/16
0100	1729007	1	SPACER, 3/8 ID x 1-1/2 OD x 1"
0110	1732955	1	V-BELT, A-Wedge, HA, 94.45 LG
0120	1731911A	1	SUPPORT, Idler
0140	1921971	1	CAPSCREW, Hex Head, 3/8-16 x 1-3/4, G5
0150	1923325	2	CAPSCREW, Hex Head, 5/16-18 x 7/8, G5
0160	1931277	2	NUT, Hex Flange, Whiz Lock, 5/16-18
0170	1732884A	1	GUARD, Spring

Not for
Reproduction

Footnotes:

42" Mower Deck - Height Adjustment Group

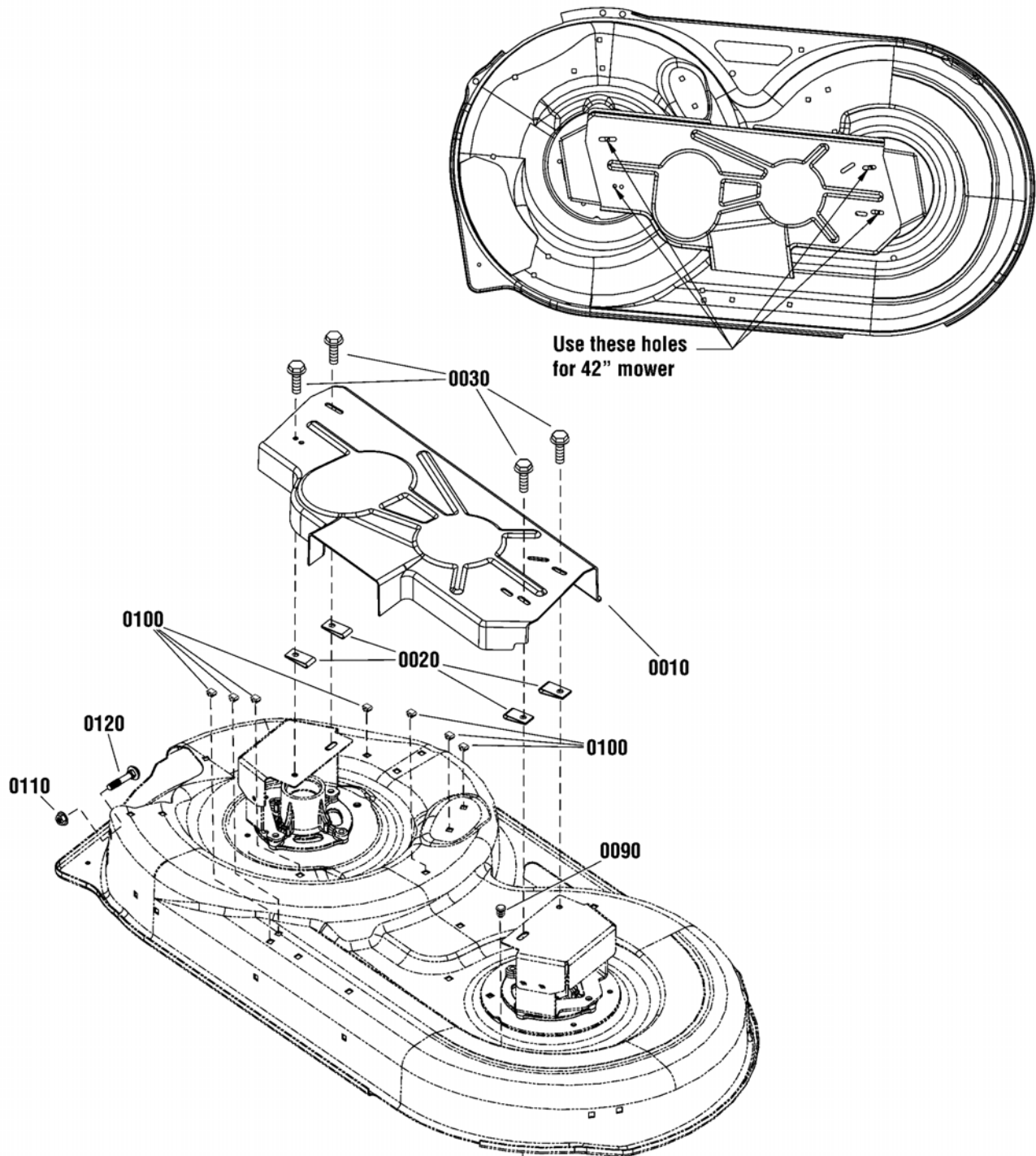


42" Mower Deck - Height Adjustment Group

Item	Part No	Qty	Description
0010	1731966BMYP	1	HITCH, Front
0020	1730097SM	1	ROD
0030	1730221ASM	1	HANGER, Front
0040	1679166SM	2	SPACER
0050	1960379SM	2	NUT, Hex Lock, ESNA Light, 1/2-13
0060	703852	1	PIN, Retainer, 5/16
0070	1731414SM	1	ROD, Latch
0080	703158	4	NUT, Hex Flange, ESNA, 3/8-16
0090	1731402ASM	1	BRACKET, Gauge Wheel, Front, RH
0100	1731403ASM	1	BRACKET, Gauge Wheel, Rear, LH
0110	2108765SM	4	BOLT, Wheel, 3/8-16 x 2-3/4
0120	703853	4	WASHER, 1/2 ID x 1 OD
0130	1714760SM	4	WHEEL
0140	703409	17	NUT, Flange, 5/16-18, GR5
0150	703185	17	BOLT, Carriage, Short Neck, 5/16-18 x 3/4, GR5
0160	1753662BMYP	1	SUPPORT, Mower, LH
0170	1753663BMYP	1	SUPPORT, Mower, RH
0300	1732258BMYP	1	BRACKET, Gauge Wheel, Front, LH
0310	7301171BMYP	1	BRACKET, Gauge Wheel, Rear, RH

Not for
Reproduction

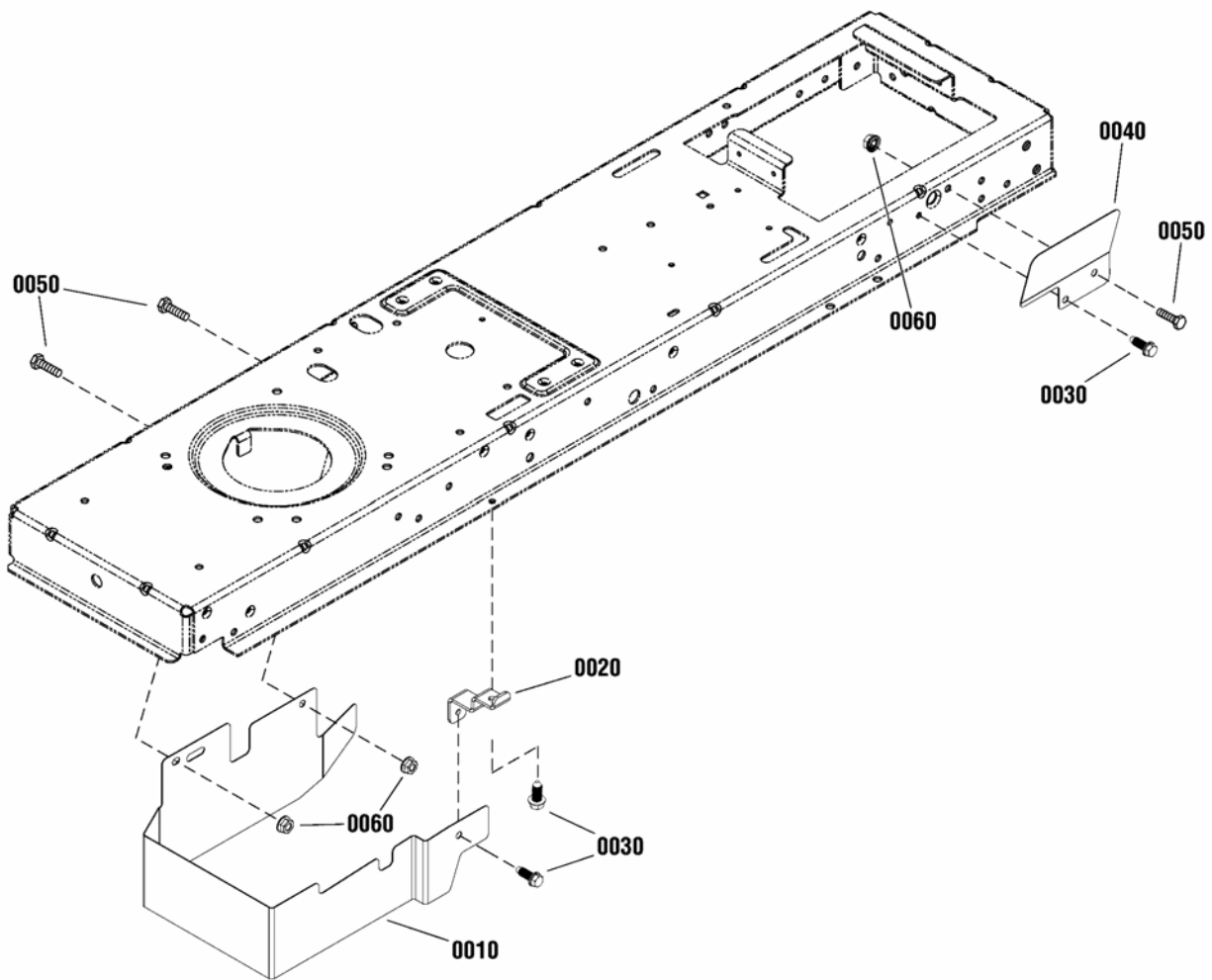
Footnotes:



Item	Part No	Qty	Description
0010	1751850YP	1	GUARD, Mower Housing
0020	1926018SM	4	NUT, Speed, 1/4
0030	1960295SM	4	SCREW, Hex Head, 1/4-20 x 5/8
0090	7046780SM	1	PLUG, Hole
0100	1705115SM	7	PLUG, Button
0110	703409	1	NUT, Flange, 5/16-18
0120	703185	1	BOLT, Carriage, 5/16-18 x 3/4

Not for
Reproduction

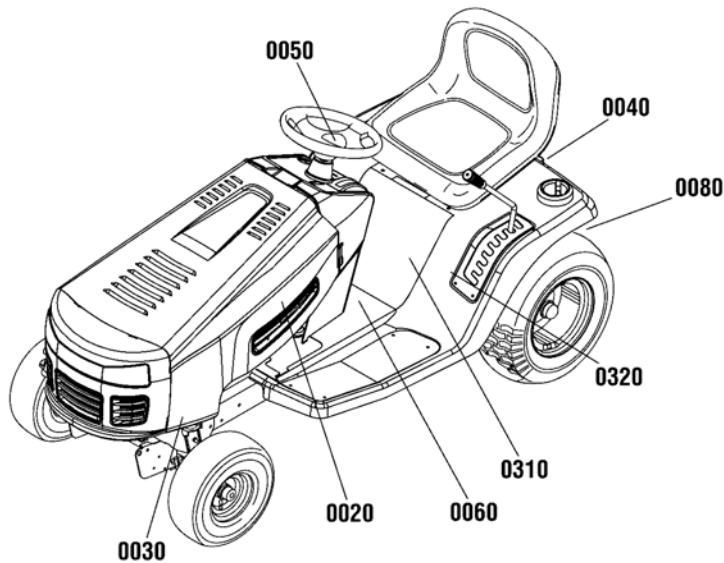
Footnotes:



Item	Part No	Qty	Description
0010	1758016BMYP	1	GUARD, Engine Pulley
0020	1752160BMYP	1	BRACKET, Guard Support
0030	703949	3	SCREW, Washer, 5/16-18 x 5/8
0040	1752039BMYP	1	GUARD, Rear Pulley
0050	704287	3	CAPSCREW, HexHead, 5/16-18 x 3/4, GR5
0060	703409	3	NUT, Flange, 5/16-18, GR5

Not for
Reproduction

Footnotes:



0020



0030



0040



0050



0060



0080



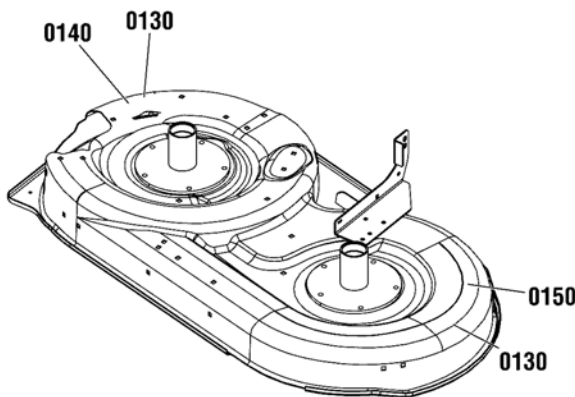
0310



0320



0320



0130

0140

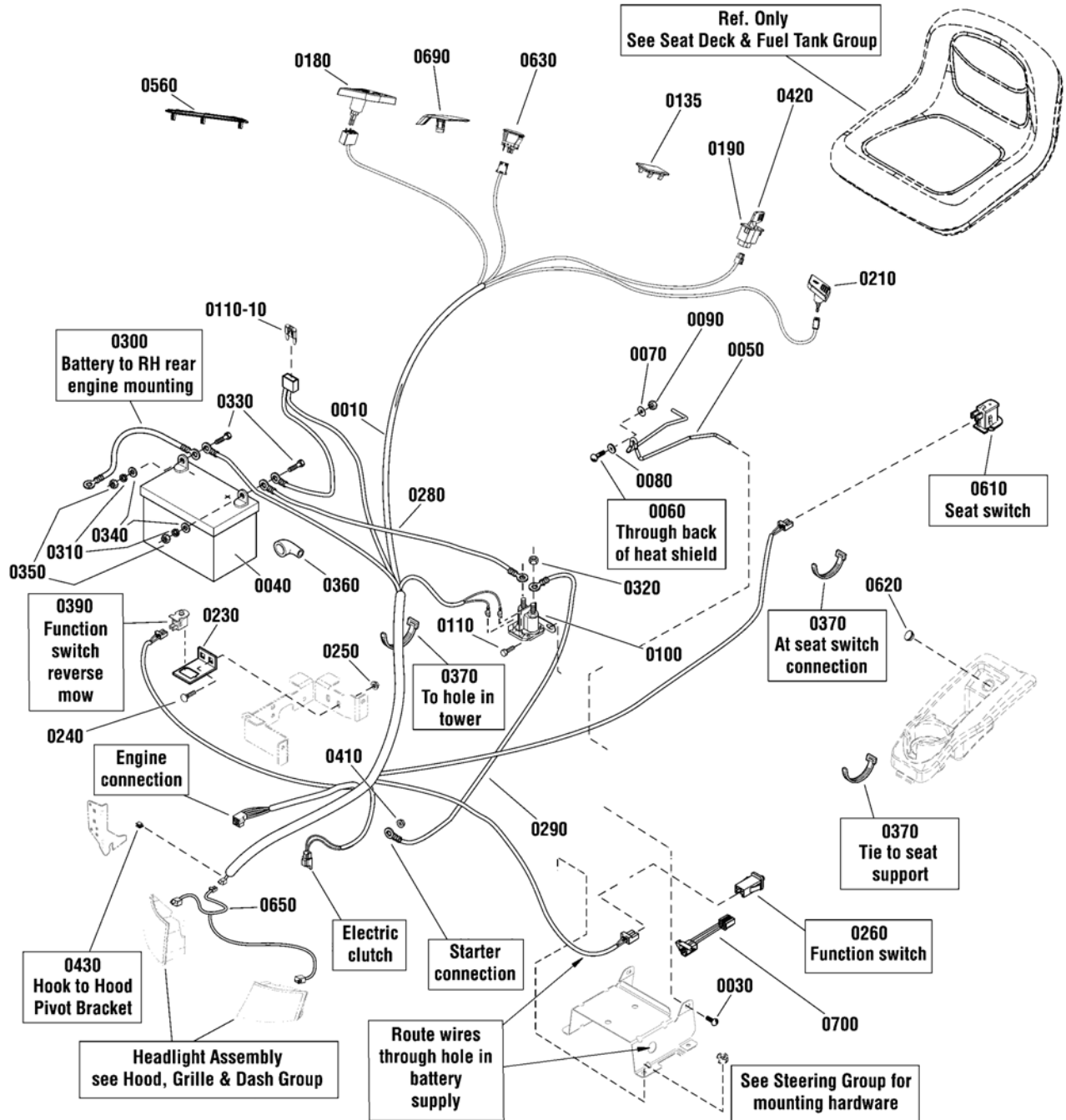


0150

Item	Part No	Qty	Description
0020	1751632YP	2	DECAL, Snapper Turtle
0030	7104875YP	2	DECAL, Front Cover
0040	1750913YP	1	DECAL, Snapper Logo
0050	1739085SM	2	DECAL, Logo, Steering Wheel
0060	1750191YP	1	DECAL, Tunnel
0080	1730202SM	1	DECAL, Tow / Release Lever
0130	5102420YP	2	DECAL, Danger, Cut Hand/Foot
0140	5102457YP	1	DECAL, Thrown Objects
0150	1755716YP	1	DECAL, Deck, 42"/107CM
0310	1754246YP	1	DECAL, Powered by Briggs
0320	1757593YP	1	DECAL, Model, ESPX17542
0320	1758917YP	1	DECAL, Model, SPX 100

Not for
Reproduction

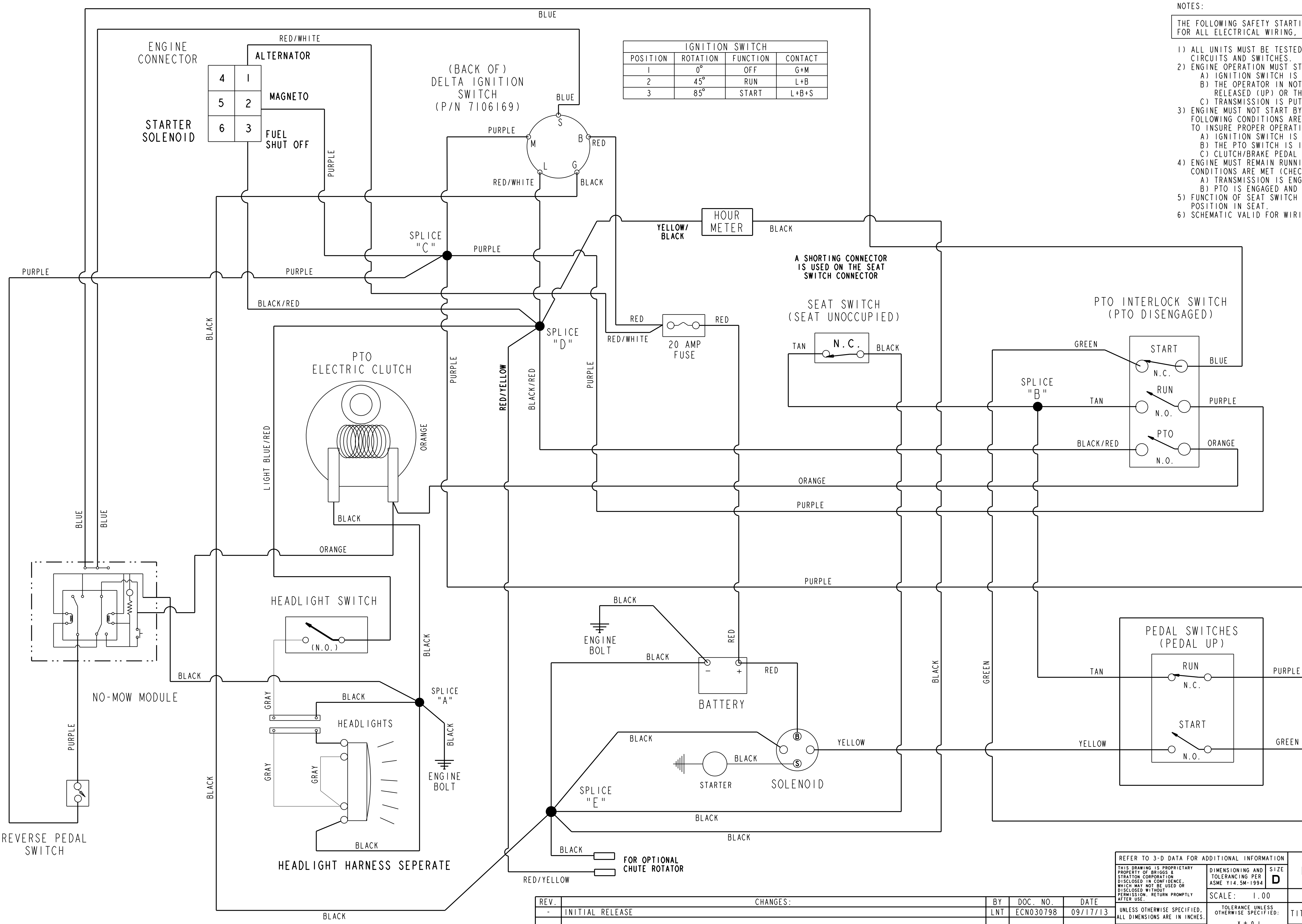
Footnotes:



Item	Part No	Qty	Description
0010	1753020YP	1	WIRING HARNESS (for Trombetta Ignition Switch)
0010	1757822YP	1	WIRING HARNESS (for Delta Ignition Switch)
0010-10	----	1	* FUSE, Mini, 20 Amp (Included with Ref. No. 0110)
0030	1930601SM	2	SCREW, Hex Washer Head, Taptite, 5/16-18 x 5/8
0040	----	1	BATTERY, 12 Volt, 7U1L
0050	1730007SM	1	HOLD DOWN, Battery
0060	1931318SM	1	BOLT, Carriage, 1/4-20 x 7/8, G5
0070	703229	1	WASHER, 1/4 x 27/32
0080	1960518SM	1	PUSHNUT, 1/4
0090	703232	1	NUT, Hex Lock, 1/4-20, ESNA
0100	1728963SM	1	SOLENOID
0110	B4300GS	2	SCREW, Hex Washer Head, Taptite, 1/4-20 x 1/2
0135	1722611SM	1	PLUG, Hole 27/32 x 1-3/4
0180	1738982YP	1	SWITCH, PTO
0190	1726556SM	1	SWITCH, RMO, Module Only
0210	1738983YP	1	SWITCH, Light
0230	1728026ASM	1	SUPPORT, RMO Switch
0240	703185	2	BOLT, Carriage, 5/16-18 x 3/4, G5
0250	703409	2	NUT, Hex Flange Whiz Lock, 5/16-18
0260	1732006SM	1	SWITCH, Push Button
0280	1752685YP	1	CABLE, 8GA, Red, 10"
0290	1751450YP	1	CABLE, 8GA, Red, 25"
0300	1752686YP	1	CABLE, 8GA, Black, 26"
0310	2816964SM	2	LOCKWASHER, 1/4
0320	2860750SM	2	NUT, Hex, Keps, 5/16-24
0330	1923341SM	2	CAPSCREW, Hex Head, 1/4-20 x 3/4, G5
0340	2821319SM	2	WASHER, 1/4 x 5/8 OD
0350	2816622SM	2	NUT, Hex, 1/4-20
0360	1677296SM	1	BOOT, Insulator Battery Terminal, Red
0370	1701011SM	4	TIE, Self Locking, 7-5/16
0390	1732004SM	1	SWITCH, Push Button, NO, Black
0410	703233	1	NUT, Hex Flange Whiz Lock, 1/4-20
0420	1726557SM	2	KEY, No Mow Module (Yellow)
0430	2172434SM	1	CLIP, Panel
0560	1752934YP	1	PLUG, Dash, No Hourmeter
0610	7023354YP	1	SWITCH, Push Button, NC, Gray
0620	1732007SM	1	PLUG, Hole, 7/8 Dia.
0630	1737959YP	1	SWITCH, Ignition (Trombetta)(Without Key)
0630	7106169YP	1	SWITCH, Ignition (Delta)(Without Key)
0650	1751940YP	1	HARNESS, Headlight
0690	1753240YP	1	PLUG, Starter Insert
0700	1734025SM	1	JUMPER, Wires & Connectors Assembly, 3"
1190	1751523YP	1	KEY, Ignition Switch - Trombetta (Not Shown)
1190	7106172YP	1	KEY, Ignition Switch - Delta (Not Shown)

Footnotes:

Note* See your local hardware store for replacement fuses.



IGNITION SWITCH			
POSITION	ROTATION	FUNCTION	CONTACT
1	0°	OFF	G+M
2	45°	RUN	L+B
3	85°	START	L+B+S

- NOTES:
- THE FOLLOWING SAFETY STARTING & RUNNING CONDITIONS MUST BE MET FOR ALL ELECTRICAL WIRING, SWITCHES AND RELATED COMPONENTS.
- 1) ALL UNITS MUST BE TESTED FOR CORRECT WIRING & FUNCTION OF ALL CIRCUITS AND SWITCHES.
 - 2) ENGINE OPERATION MUST STOP WHEN THE FOLLOWING CONDITIONS PREVAIL:
 - A) IGNITION SWITCH IS PLACED IN THE OFF POSITION.
 - B) THE OPERATOR IS NOT SEATED WITH EITHER THE CLUTCH/BRAKE PEDAL RELEASED (UP) OR THE PTO IN THE ENGAGED POSITION.
 - C) TRANSMISSION IS PUT IN REVERSE WITHOUT OVERRIDE MODULE ENGERIZED.
 - 3) ENGINE MUST NOT START BY CONVENTIONAL MEANS UNLESS ALL OF THE FOLLOWING CONDITIONS ARE MET. EACH CONDITION MUST BE CHECKED TO INSURE PROPER OPERATING SEQUENCES:
 - A) IGNITION SWITCH IS INTENTIONALLY PLACED IN THE START POSITION.
 - B) THE PTO SWITCH IS IN THE DISENGAGED POSITION.
 - C) CLUTCH/BRAKE PEDAL MUST BE FULLY DEPRESSED.
 - 4) ENGINE MUST REMAIN RUNNING IF OPERATOR IS SEATED AND THE FOLLOWING CONDITIONS ARE MET (CHECK THOROUGHLY TO INSURE PROPER OPERATION):
 - A) TRANSMISSION IS ENGAGED (CLUTCH/BRAKE PEDAL IS RELEASED (UP)).
 - B) PTO IS ENGAGED AND OVERRIDE MODULE ENGERIZED.
 - 5) FUNCTION OF SEAT SWITCH MUST BE TESTED WITH SWITCH MOUNTED IN PROPER POSITION IN SEAT.
 - 6) SCHEMATIC VALID FOR WIRING HARNESS 1757822

REV.	CHANGES:	BY	DOC. NO.	DATE
-	INITIAL RELEASE	LNT	ECN030798	09/17/13

REFER TO 3-D DATA FOR ADDITIONAL INFORMATION

THIS DRAWING IS PROPRIETARY PROPERTY OF BRIGGS & STRATTON CORPORATION. IT IS TO BE KEPT IN CONFIDENCE, WHICH MAY NOT BE USED OR DISCLOSED WITHOUT PERMISSION. RETURN PROMPTLY AFTER USE.

UNLESS OTHERWISE SPECIFIED, ALL DIMENSIONS ARE IN INCHES.

CLASSIFICATION OF CHARACTERISTICS

DOUBLE MAJOR (MM.00)
CRITICAL (C--00)
MAJOR (M.00)

DIMENSIONING AND TOLERANCING PER ASME Y14.5M-1994

SCALE: 1.00

TOLERANCE UNLESS OTHERWISE SPECIFIED:
.x ± 0.1
.xx ± 0.03
.xxx ± 0.010
ANGLES ± 2.0

THIRD ANGLE PRACTICE

BRIGGS & STRATTON CORP.

UNCONTROLLED DOCUMENT WHEN PRINTED

TITLE: WIRING SCHEMATIC, NO 12V, DELTA SWITCH

MATERIAL: N/A

DRAWN: LNT 09/17/13 SIMILAR TO: 1753021

APPR: - - -

DO NOT SCALE DRAWING

1757851

REV 1 SHEET 1 OF 1

Hardware Identification & Torque Specifications

Torque Specification Chart								
FOR STANDARD METRIC MACHINE HARDWARE (Tolerance ± 20%)								
Property Class	5.6		8.8		10.9		12.9	
	Class 5.6		Class 8.8		Class 10.9		Class 12.9	
Size Of Hardware	in/lbs		in/lbs		in/lbs		in/lbs	
	ft/lbs	Nm.	ft/lbs	Nm.	ft/lbs	Nm.	ft/lbs	Nm.
M3	5.88	.56	13.44	1.28	19.2	1.80	22.92	2.15
M4	13.44	1.28	30.72	2.90	43.44	4.10	52.56	4.95
M5	26.4	2.50	60.96	5.75	5.97	8.10	7.15	9.7
M6	44.64	4.3	7.3	9.9	10.3	14	12.1	16.5
M7	5.2	7.1	12.1	16.5	16.9	23	19.9	27
M8	7.7	10.5	17.7	24	25	34	29	40
M10	15	21	35	48	50	67	59	81
M12	26	36	61	83	86.2	117	103	140
M14	42	58	101	132	136	185	162	220
M16	64	88	147	200	210	285	250	340
M18	89	121	202	275	287	390	346	470
M20	126	171	290	390	405	550	486	660
M22	169	230	390	530	559	745	656	890
M24	217	295	497	375	708	960	840	1140
M27	320	435	733	995	1032	1400	1239	1680
M30	435	590	995	1350	1401	1900	1681	2280
M33	590	800	1349	1830	1902	2580	2278	3090
M36	759	1030	1740	2360	2441	3310	2935	3980
M39	988	1340	2249	3050	3163	4290	3798	5150

Torque Specification Chart						
FOR STANDARD MACHINE HARDWARE (Tolerance ± 20%)						
Hardware Grade	No Marks		SAE Grade 5		SAE Grade 8	
	SAE Grade 2		SAE Grade 5		SAE Grade 8	
Size Of Hardware	in/lbs		in/lbs		in/lbs	
	ft/lbs	Nm.	ft/lbs	Nm.	ft/lbs	Nm.
8-32	19	2.1	30	3.4	41	4.6
8-36	20	2.3	31	3.5	43	4.9
10-24	27	3.1	43	4.9	60	6.8
10-32	31	3.5	49	5.5	68	7.7
1/4-20	66	7.6	8	10.9	12	16.3
1/4-28	76	8.6	10	13.6	14	19.0
5/16-18	11	15.0	17	23.1	25	34.0
5/16-24	12	16.3	19	25.8	29	34.0
3/8-16	20	27.2	30	40.8	45	61.2
3/8-24	23	31.3	35	47.6	50	68.0
7/16-14	30	40.8	50	68.0	70	95.2
7/16-20	35	47.6	55	74.8	80	108.8
1/2-13	50	68.0	75	102.0	110	149.6
1/2-20	55	74.8	90	122.4	120	163.2
9/16-12	65	88.4	110	149.6	150	204.0
9/16-18	75	102.0	120	163.2	170	231.2
5/8-11	90	122.4	150	204.0	220	299.2
5/8-18	100	136	180	244.8	240	326.4
3/4-10	160	217.6	260	353.6	386	525.0
3/4-16	180	244.8	300	408.0	420	571.2
7/8-9	140	190.4	400	544.0	600	816.0
7/8-14	155	210.8	440	598.4	660	897.6
1-8	220	299.2	580	788.8	900	1,244.0
1-12	240	326.4	640	870.4	1,000	1,360.0

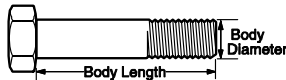
The guides and ruler furnished below are designed to help you select the appropriate hardware.



Nut, M8

Thread Diameter (mm)
Inside Diameter (in) Threads per inch

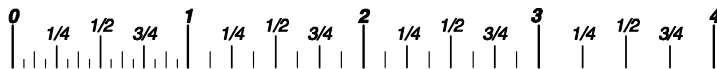
Nut, 1/2-16



Screw, M8- 1.25 x 25

Thread Diameter (mm) Distance between threads (mm) Body Length (mm)
Body Diameter Threads per inch Body Length (in)

Screw, 1/2- 16 x 2



Standard Hardware Sizing

When a washer or nut is identified as 1/2" (M8), this is the *Nominal size*, meaning the *inside diameter* is 1/2 inch (8mm metric thread diameter); if a second number is present it represents the *threads per inch* (distance between threads).

When bolt or capscrew is identified as 1/2 - 16 x 2" (M8 - 1.25 x 50), this means the *Nominal size*, or body diameter is 1/2 inch (8mm metric thread diameter), the second number, 16, represents the *threads per inch*, (1.25 thread diameter). The final number is the body length of the bolt or screw, 2 inches (50mm).

NOTES

- These torque values are to be used for all hardware excluding: locknuts, self-tapping screws, thread forming screws, sheet metal screws and socket head setscrews.
- Recommended seating torque values for locknuts:
 - for prevailing torque locknuts - use 65% of grade 5 torques.
 - for flange whizlock nuts and screws - use 135% of grade 5 torques.
- Unless otherwise noted on assembly drawings, all torque values must meet this specification.

Common Hardware Types

Hex Head Capscrew



Washer



Carriage Bolt



Lockwasher



Hex Nut



Wrench & Fastener Size Guide

1/4" Bolt or Nut Wrench—7/16"	5/16" Bolt or Nut Wrench—1/2"	3/8" Bolt or Nut Wrench—9/16"	7/16" Bolt or Nut Wrench (Bolt)—5/8" Wrench (Nut)—11/16"	1/2" Bolt or Nut Wrench—3/4"
M6 Bolt or Nut Wrench—10mm	M8 Bolt or Nut Wrench—13mm	M10 Bolt or Nut Wrench—17mm	M12 Bolt or Nut Wrench—19mm	M14 Bolt or Nut Wrench—22mm

Parts Manual for

SNAPPER®

**LAWN TRACTOR ELECTRIC CLUTCH
EUROPEAN SPX LAWN TRACTOR
LT150**

Not for
Reproduction

IT IS THE POLICY OF BRIGGS & STRATTON CORP TO IMPROVE ITS PRODUCTS WHENEVER IT IS POSSIBLE AND PRACTICAL TO DO SO. WE RESERVE THE RIGHT TO MAKE CHANGES OR ADD IMPROVEMENTS AT ANY TIME WITHOUT INCURRING ANY OBLIGATION TO MAKE SUCH CHANGES ON PRODUCTS

Briggs & Stratton Yard Power Products Group

535 Macon Road
McDonough, GA, 30253 U.S.A.
800-935-2967

www.snapper.com

Copyright © 2015 Briggs & Stratton Corporation
Milwaukee, WI USA. All Rights Reserved

Manual No. 1758153

Revision: B 7/6/2015