

# Attachment Illustrated Parts List

## Attachment

Mfg. No.	Description
1695164	38" & 42" Twin Bag Catcher

### Briggs & Stratton Power Products Group, L.L.C.

P.O. Box 702  
Milwaukee, WI 53201-0702 USA

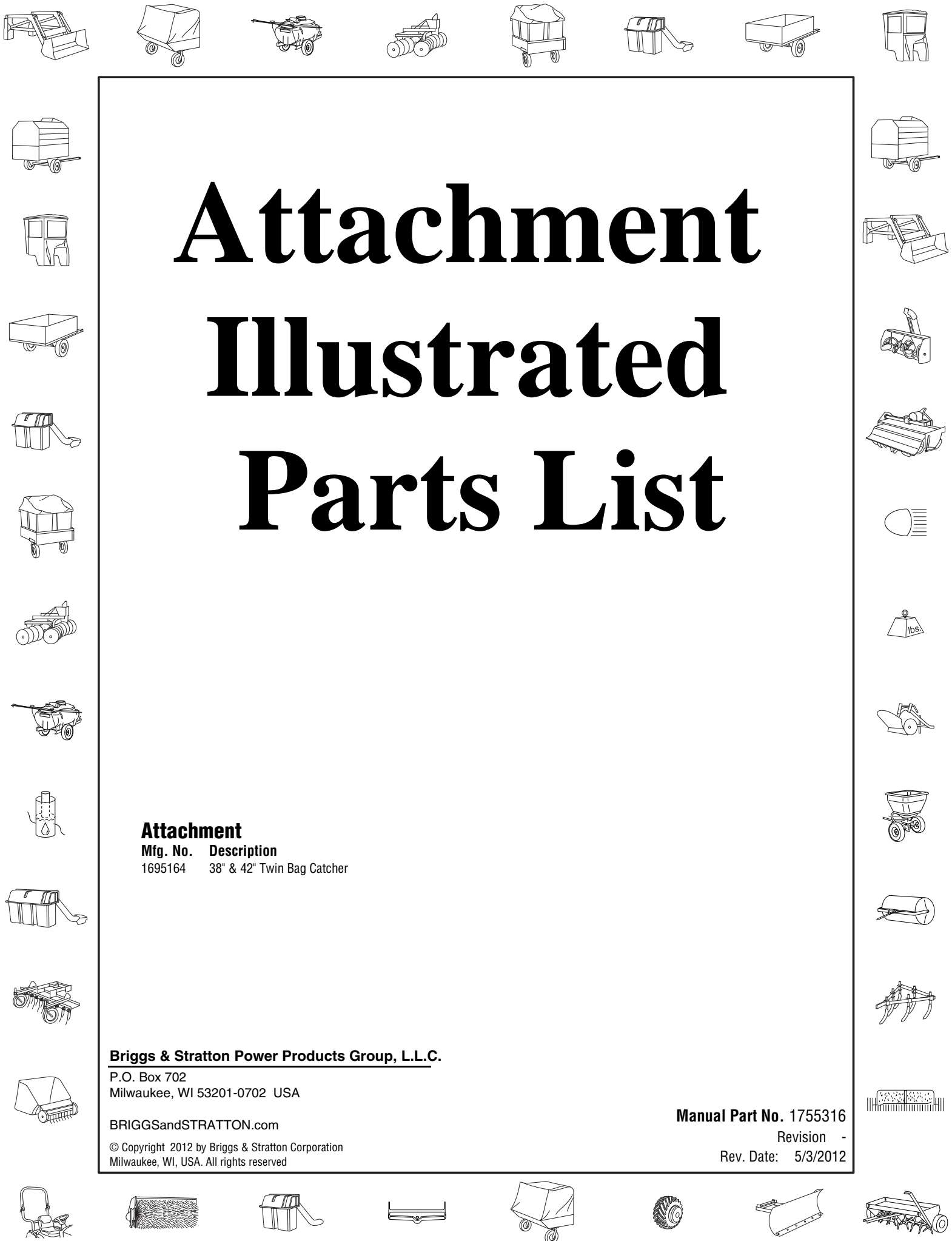
BRIGGSandSTRATTON.com

© Copyright 2012 by Briggs & Stratton Corporation  
Milwaukee, WI, USA. All rights reserved

Manual Part No. 1755316

Revision -

Rev. Date: 5/3/2012



Not for  
Reproduction

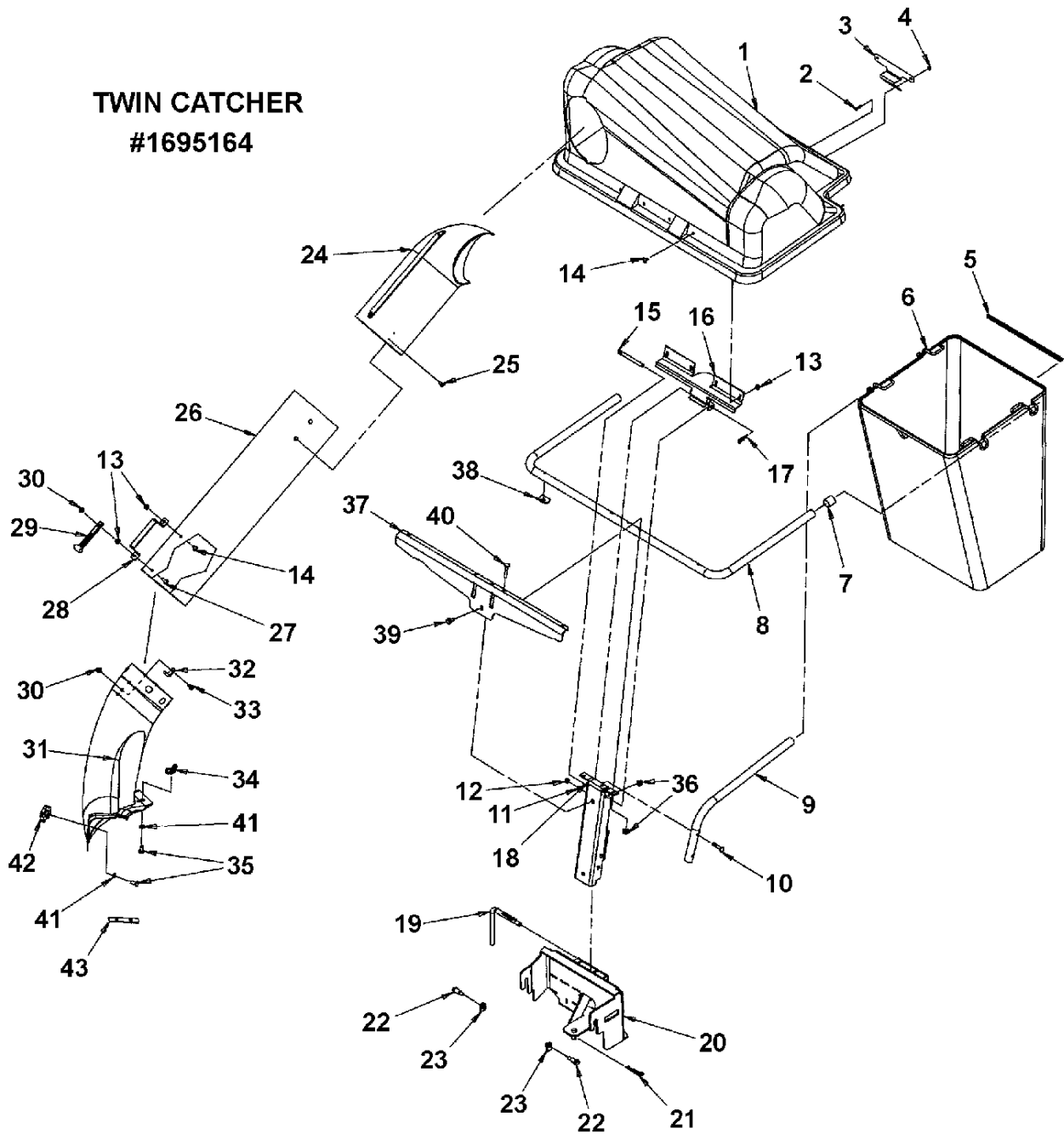
<b>PRODUCT COMPONENTS</b>	<b>PAGES</b>
38" & 42" Twin Bag Catcher .....	4
<b>Torque Specification Chart</b> .....	<b>Inside Back Cover</b>

Not for  
Reproduction

# 38" & 42" Twin Bag Catcher

NOTE: Unless noted otherwise,  
use the standard hardware torque  
specification chart.

1695164



The above parts group applies to the following Mfg. Nos.:

1695164 - 38" & 42" Twin Bag Catcher

## 38" & 42" Twin Bag Catcher

REF NO	PART NO.	QTY.	DESCRIPTION
1	1732815	1	COVER, ASSY - TWIN W/DECAL
2	1960404	2	SCREW, 10-24 X .75
3	1733416A	1	LATCH
4	1933896	2	NUT, #10-24 ESNA LOCK
5	1700864	2	EDGING, 13.12 LONG PVC
6	1732350	2	BAG, ASSY - TWIN
7	720339	3	CAP, (24862)
8	1733440	1	TUBE, U, 5-HOLE
9	720530	1	TUBE, CENTER (54412)
10	720079	2	SCREW, .312-24 CURVE (6x93)
11	1917356	2	LOCKWASHER, .312 SPRING
12	1920263	2	NUT, .312-24 HEX
13	1928372	6	NUT, .25-20 KEPS LOCK
14	720074	5	SCREW, .25-20 x .5 SLOT 4x24
15	720525	1	PIN, COVER HINGE (54407)
16	720524	1	HINGE, COVER (54398)
17	1960074	1	PIN, HAIR .090
18	1732867	1	CHANNEL, ASSY
19	1732565	1	PIN, CHANNEL MOUNT
20	1732067A	1	MOUNT, ASSY - CHANNEL
21	1960033	1	PIN, HAIR .125 x 2.56 LG
22	1728976	2	BOLT, SHOULDER .312-18
23	1960717	2	NUT, .312-18 SPEED
24	1732446	1	ELBOW, UPPER TUBE
25	722855	1	SCREW, .25 x .75 PHLP 26x239
26	1734299	1	TUBE, CLEAR
27	720076	1	SCREW, .25-20 x 1.0 (4x71)
28	720533	1	HANDLE, TUBE (54416)
29	2171600	1	STRAP, RUBBER
30	1930642	2	NUT, .25-20 C TRLK FLG
31	1734367	1	BOOT, 38"/42"
32	720543	1	PIN, LATCH (54563)
33	1960252	1	BOLT, CARRIAGE 25-20 x .62
34	720125	1	NUT, .312-18 WING (14x86)
35	1931333	2	BOLT, CARRIAGE .312-18 x .75
36	1960686	6	NUT, 5/16-18 ESNA
37	1733432A	1	BRACE, STIFFENER
38	1720452	2	CLAMP, SADDLE
39	1930591	1	CAP, SCREW 5/16-18 x .75 LG
40	1931338	5	BOLT, CARRIAGE .31-18 x 1.75
41	1933988	2	NUT, PUSH .312
42	1733098	1	KNOB, .312-18 INT 5-LOBE
43	1733180A	1	SHIM, MOWER DEFL BRACKET
44	11733420	1	MANUAL, INSTRUCTION

### Footnotes

The above parts group applies to the following Mfg. Nos.:

1695164 - 38" & 42" Twin Bag Catcher

Not for  
Reproduction

# Hardware Identification & Torque Specifications

Torque Specification Chart								
FOR STANDARD METRIC MACHINE HARDWARE (Tolerance ± 20%)								
Property Class	5.6		8.8		10.9		12.9	
	Class 5.6		Class 8.8		Class 10.9		Class 12.9	
Size Of Hardware	in/lbs		in/lbs		in/lbs		in/lbs	
	ft/lbs	Nm.	ft/lbs	Nm.	ft/lbs	Nm.	ft/lbs	Nm.
M3	5.88	.56	13.44	1.28	19.2	1.80	22.92	2.15
M4	13.44	1.28	30.72	2.90	43.44	4.10	52.56	4.95
M5	26.4	2.50	60.96	5.75	5.97	8.10	7.15	9.7
M6	44.64	4.3	7.3	9.9	10.3	14	12.1	16.5
M7	5.2	7.1	12.1	16.5	16.9	23	19.9	27
M8	7.7	10.5	17.7	24	25	34	29	40
M10	15	21	35	48	50	67	59	81
M12	26	36	61	83	86.2	117	103	140
M14	42	58	101	132	136	185	162	220
M16	64	88	147	200	210	285	250	340
M18	89	121	202	275	287	390	346	470
M20	126	171	290	390	405	550	486	660
M22	169	230	390	530	559	745	656	890
M24	217	295	497	375	708	960	840	1140
M27	320	435	733	995	1032	1400	1239	1680
M30	435	590	995	1350	1401	1900	1681	2280
M33	590	800	1349	1830	1902	2580	2278	3090
M36	759	1030	1740	2360	2441	3310	2935	3980
M39	988	1340	2249	3050	3163	4290	3798	5150

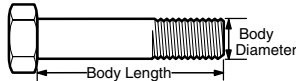
The guides and ruler furnished below are designed to help you select the appropriate hardware.



Nut, M8

Thread Diameter (mm)  
Inside Diameter (in)  
Threads per inch

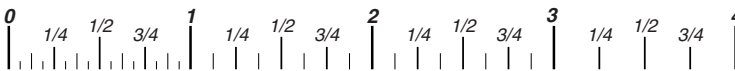
Nut, 1/2-16



Screw, M8 - 1.25 x 25

Thread Diameter (mm)  
Body Diameter  
Distance between threads (mm)  
Threads per inch  
Body Length (mm)  
Body Length (in)

Screw, 1/2 - 16 x 2



## Standard Hardware Sizing

When a washer or nut is identified as 1/2" (M8), this is the *Nominal size*, meaning the *inside diameter* is 1/2 inch (8mm metric thread diameter); if a second number is present it represents the *threads per inch* (distance between threads).

When bolt or capscrew is identified as 1/2 - 16 x 2" (M8 - 1.25 x 50), this means the *Nominal size*, or body diameter is 1/2 inch (8mm metric thread diameter), the second number, 16, represents the *threads per inch*, (1.25 thread diameter). The final number is the body length of the bolt or screw, 2 inches (50mm).

Torque Specification Chart						
FOR STANDARD MACHINE HARDWARE (Tolerance ± 20%)						
Hardware Grade	No Marks		SAE Grade 5		SAE Grade 8	
	SAE Grade 2		SAE Grade 5		SAE Grade 8	
Size Of Hardware	in/lbs		in/lbs		in/lbs	
	ft/lbs	Nm.	ft/lbs	Nm.	ft/lbs	Nm.
8-32	19	2.1	30	3.4	41	4.6
8-36	20	2.3	31	3.5	43	4.9
10-24	27	3.1	43	4.9	60	6.8
10-32	31	3.5	49	5.5	68	7.7
1/4-20	66	7.6	8	10.9	12	16.3
1/4-28	76	8.6	10	13.6	14	19.0
5/16-18	11	15.0	17	23.1	25	34.0
5/16-24	12	16.3	19	25.8	29	34.0
3/8-16	20	27.2	30	40.8	45	61.2
3/8-24	23	31.3	35	47.6	50	68.0
7/16-14	30	40.8	50	68.0	70	95.2
7/16-20	35	47.6	55	74.8	80	108.8
1/2-13	50	68.0	75	102.0	110	149.6
1/2-20	55	74.8	90	122.4	120	163.2
9/16-12	65	88.4	110	149.6	150	204.0
9/16-18	75	102.0	120	163.2	170	231.2
5/8-11	90	122.4	150	204.0	220	299.2
5/8-18	100	136	180	244.8	240	326.4
3/4-10	160	217.6	260	353.6	386	525.0
3/4-16	180	244.8	300	408.0	420	571.2
7/8-9	140	190.4	400	544.0	600	816.0
7/8-14	155	210.8	440	598.4	660	897.6
1-8	220	299.2	580	788.8	900	1,244.0
1-12	240	326.4	640	870.4	1,000	1,360.0

## NOTES

- These torque values are to be used for all hardware excluding: locknuts, self-tapping screws, thread forming screws, sheet metal screws and socket head setscrews.
- Recommended seating torque values for locknuts:
  - for prevailing torque locknuts - use 65% of grade 5 torques.
  - for flange whizlock nuts and screws - use 135% of grade 5 torques.
- Unless otherwise noted on assembly drawings, all torque values must meet this specification.

## Common Hardware Types

Hex Head Capscrew



Washer



Carriage Bolt



Lockwasher



Hex Nut



## Wrench & Fastener Size Guide

1/4" Bolt or Nut Wrench—7/16"	5/16" Bolt or Nut Wrench—1/2"	3/8" Bolt or Nut Wrench—9/16"	7/16" Bolt or Nut Wrench (Bolt)—5/8" Wrench (Nut)—11/16"	1/2" Bolt or Nut Wrench—3/4"
M6 Bolt or Nut Wrench—10mm	M8 Bolt or Nut Wrench—13mm	M10 Bolt or Nut Wrench—17mm	M12 Bolt or Nut Wrench—19mm	M14 Bolt or Nut Wrench—22mm

Not for  
Reproduction

**IT IS THE POLICY OF BRIGGS & STRATTON CORP TO IMPROVE ITS PRODUCTS  
WHENEVER IT IS POSSIBLE AND PRACTICAL TO DO SO. WE RESERVE THE RIGHT TO  
MAKE CHANGES OR ADD IMPROVEMENTS AT ANY TIME WITHOUT INCURRING ANY  
OBLIGATION TO MAKE SUCH CHANGES ON PRODUCTS.**

**Briggs & Stratton Power Products Group, L.L.C.**

P.O. Box 702  
Milwaukee, WI 53201-0702 USA

BRIGGSandSTRATTON.com	Murray.com
Snapper.com	AllisChalmersLawn.com
SimplicityMFG.com	AGCOLawn.com
MasseyLawn.com	