

Large Frame Dual Stage Snowthrowers

Attachment

Mfg. No.	Description
1695986	L1226E, 11.5TP 26" Dual Stage Snowthrower
1695995	(L1226EX), 11.5TP 26" Dual Stage Snowthrower (CE/Export)

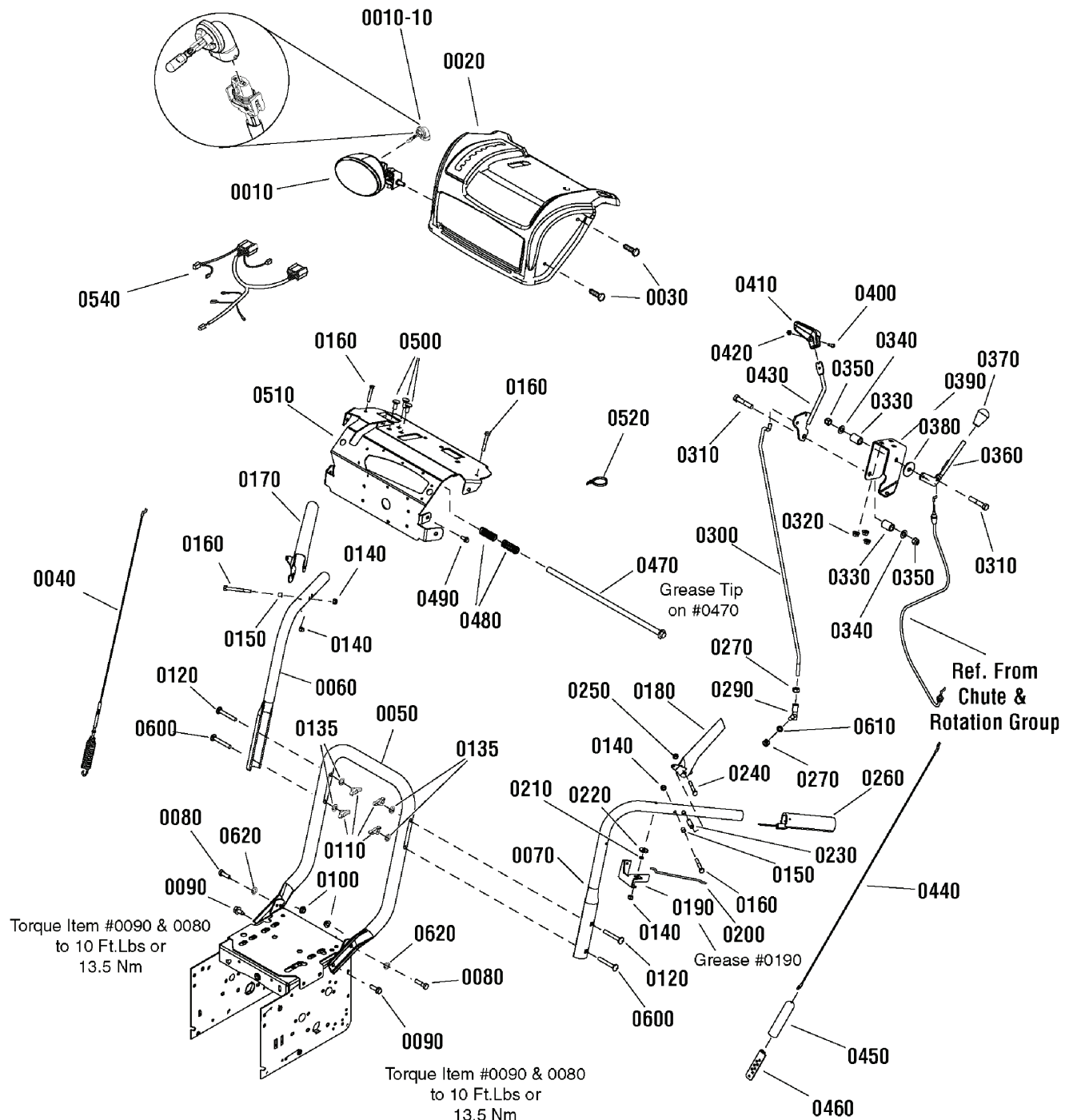
PRODUCT COMPONENTS	PAGES
Handles & Controls Group	4
Engine & Frame Group - 11.5TP	8
Auger Drive Group - Medium Duty	12
Auger Housing Group	14
Traction Drive Group - Standard	16
Wheels & Tires Group	18
Decals Group	20
Chute & Rotation Group - Electric Chute/Remote Deflector 26"	22
Gear Case Assembly - Medium Duty	24
Torque Specification Chart	Inside Back Cover

Not for
Reproduction

Handles & Controls Group

988976

NOTE: Unless noted otherwise,
use the standard hardware torque
specification chart.



The above parts group applies to the following Mfg. Nos.:

1695986 - L1226E

1695995 - (L1226EX)

Handles & Controls Group

REF NO	PART NO.	QTY.	DESCRIPTION
0010	1737965	1	HEADLIGHT, Oval
0010-10	-----	1	* BULB, Headlight, Halogen, 881-12V 27W (Included with Ref. No. 0010)
0020	1738110C	1	COVER, Panel
0030	1960715	6	SCREW, Truss Head Torx, 1/4-20 x 3/4
0040	1732471	1	CABLE & SPRING ASSEMBLY, Auger Drive, RH
0050	1737759A	1	HANDLE, Lower
0060	1734587A	1	HANDLE, Upper, RH
0070	1734586A	1	HANDLE, Upper, LH
0080	1921333	2	CAPSCREW, Hex Head, 5/16-18 x 1, G5
0090	1664847	2	CAPSCREW, Hex Washer Head, Taptite, 5/16-18 x 3/4
0100	1935048	2	NUT, Hex Flange, Two Way Lock, 5/16-18
0110	7035744	4	KNOB, Wing, 5/16-18
0120	1750299	2	BOLT, Carriage, Curved Head, 5/16-18 x 2-1/4
0135	7090391	2	WASHER, Inter Tooth, 5/16
0140	1920397	4	NUT, Hex Lock, ESNA Light, 1/4-20
0150	1678392	2	SPACER, 1/4 ID x 3/8 OD x .33
0160	1921962	4	CAPSCREW, Hex Head, 1/4-20 x 1-3/4, G5
0170	1739783A	1	LEVER, Clutch, RH
0180	1739782A	1	LEVER, Clutch, LH
0190	1733505BM	1	BRACKET, Pivot, Free Hand
0200	1736360	1	ROD, Hold Down
0210	1733095	1	SPACER, 1/4 ID x 3/8 OD x 1/8
0220	1960353	1	WASHER, 1/4
0230	1736542	2	SPACER, Stepped
0240	1750554	2	SCREW, Hex Washer Head, Shoulder, 10-24
0250	1933896	2	NUT, Hex Lock, Nylon Insert, 10-24
0260	1726317	2	GRIP
0270	2820263	2	NUT, Hex, 5/16-24
0290	724360	1	BALL JOINT
0300	1734354	1	ROD, Speed Control
0310	1923701	2	CAPSCREW, Hex Head, 3/8-16 x 2, G5
0320	1931277	3	NUT, Hex Flange, Whiz Lock, 5/16-18
0330	724361	2	SPRING
0340	1918266	2	WASHER, 3/8
0350	1919439	2	NUT, Hex Lock, ESNA Light, 3/8-16
0360	1732427	1	ROD, Chute
0370	1732470	1	KNOB, 3/8-16
0380	1924356	1	WASHER, 3/8
0390	1737684	1	BRACKET, Controls
0400	1960589	1	SCREW, Round Head Phillips, #10-24 x 3/4
0410	1733192	1	KNOB-, Slot Speed
0420	1933896	1	NUT, Hex Lock, Nylon Insert, 10-24
0430	1736836	1	SPEED LEVER
0440	727331	1	CABLE, Front Drive

Footnotes

Note* See your local hardware store for replacement bulbs.

The above parts group applies to the following Mfg. Nos.:

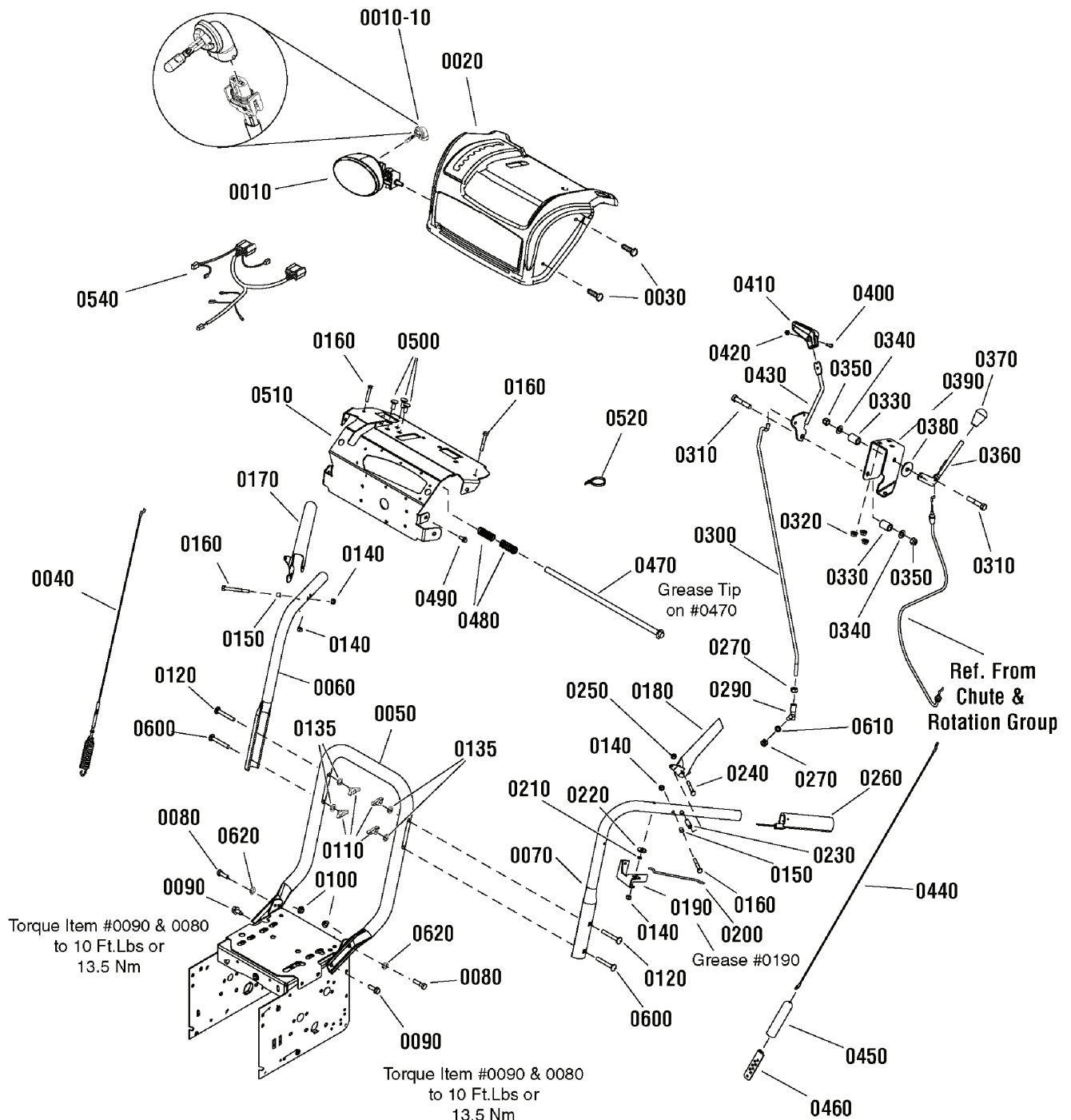
1695986 - L1226E

1695995 - (L1226EX)

Handles & Controls Group

988976

NOTE: Unless noted otherwise,
use the standard hardware torque
specification chart.



The above parts group applies to the following Mfg. Nos.:

1695986 - L1226E

1695995 - (L1226EX)

Handles & Controls Group

REF NO	PART NO.	QTY.	DESCRIPTION
0450	723154	1	BOOT, Spring End Cover
0460	723259	1	BRACKET, Cable Adjusting
0470	1733509	1	ROD & SPRING ASSEMBLY
0480	2108360	2	SPRING, Compression, 2-1/4
0490	1927429	4	CAPSCREW, Hex Washer Head, Taptite, 1/4-20 x 5/8
0500	723873	3	BOLT, Carriage, Short Neck, 5/16-18 x 3/4, G5
0510	1732064BM	1	COVER, Dash
0520	2825094	5	TIE, Self Locking
0540	1750801	1	WIRING HARNESS
0600	7091189	2	BOLT, Carriage, Curved Head, 5/16-18 x 2
0610	1917356	1	LOCKWASHER, Spring, 5/16
0620	7090391	2	WASHER, Internal Tooth, 5/16

Not for
Reproduction

Footnotes

Note* See your local hardware store for replacement bulbs.

The above parts group applies to the following Mfg. Nos.:

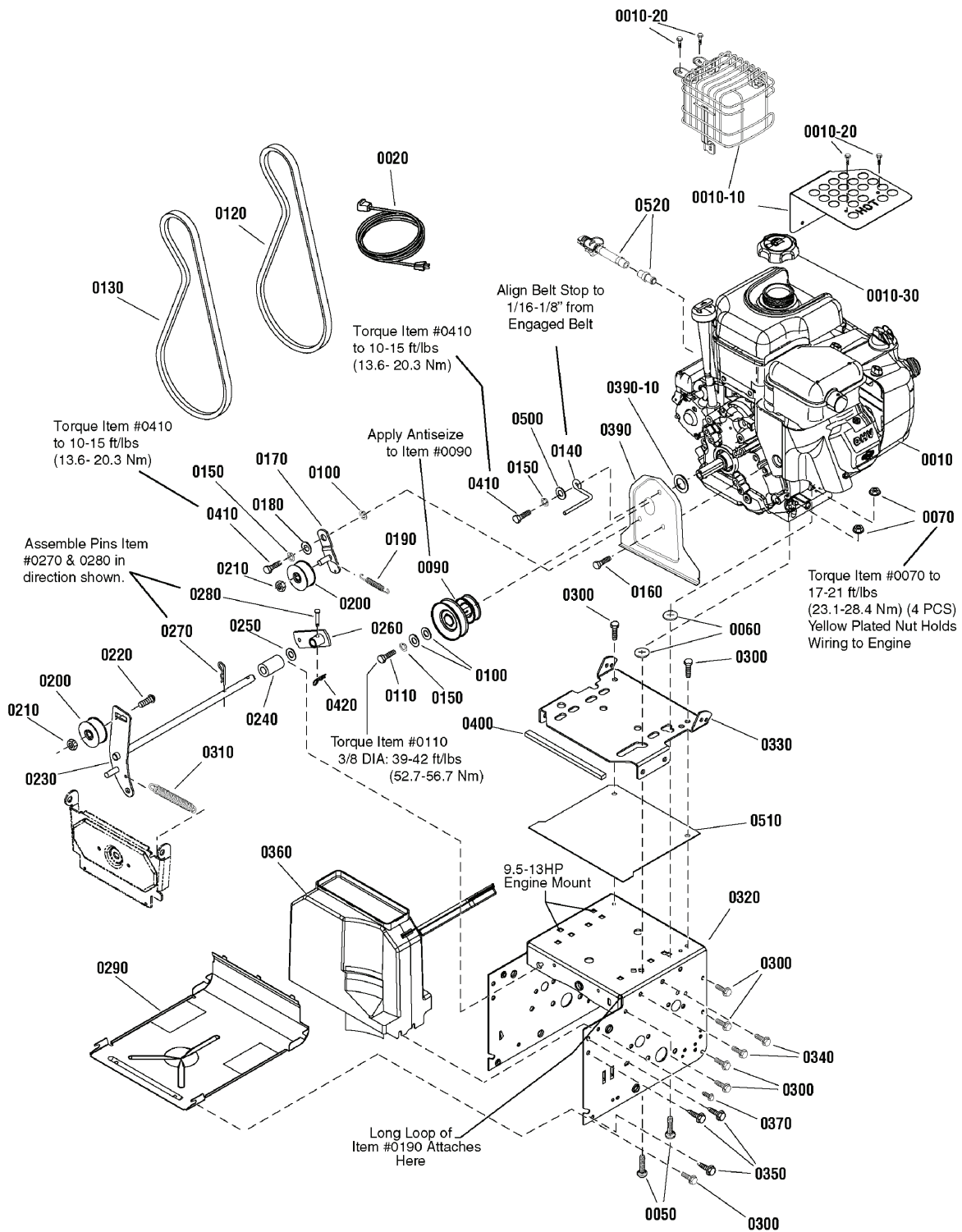
1695986 - L1226E

1695995 - (L1226EX)

Engine & Frame Group - 11.5TP

989073

NOTE: Unless noted otherwise, use the standard hardware torque specification chart.



The above parts group applies to the following Mfg. Nos.:

1695986 - L1226E

1695995 - (L1226EX)

Engine & Frame Group - 11.5TP

REF NO	PART NO.	QTY.	DESCRIPTION
0010	15C104-0158-H8	1	* ENGINE, 11.5TP Briggs & Stratton (Engine Model: 15C104-0158-H8) (CE/Export Models Only)
0010	15C114-0153-F8	1	* ENGINE, 11.5TP Briggs & Stratton (Engine Model: 15C114-0153-E8) (Domestic Models Only)
0010-10	797003	1	GUARD, Muffler, Plate (Domestic)
0010-10	793193	1	GUARD, Muffler, Cage (Export)
0010-20	699854	3	CAPSCREW, Hex Washer Head, Muffler Guard
0010-30	795027	1	CAP, Fuel
0020	724865	1	CORD, 10FT, 110V (Domestic Models Only)
0050	720064	4	BOLT, Carriage, 5/16-18 x 1-1/2
0060	720376	4	NUT, Push, For 1/4 Stud
0070	1739305	4	NUT, Hex Flange, ESNA, 5/16-18
0090	722085	1	PULLEY
0100	1919381	3	WASHER, 5/16
0110	1921982	1	CAPSCREW, Hex Head, 5/16-24 x 1-1/4, G5
0120	1733324	1	V-BELT, Drive, 3L 33.13
0130	1736421	1	V-BELT, 4L, 38.35, Auger
0140	1739070	1	BELT GUIDE
0150	1917356	4	LOCKWASHER, Spring, 5/16
0160	1921515	1	CAPSCREW, Hex Head, 5/16-24 x 3/4, G5
0170	722090	1	BRACKET, Idler
0180	722072	1	BUSHING, Idler Bracket
0190	722457	1	SPRING, Extension, Idler
0200	722378	2	IDLER, Plastic Ball Bearing
0210	1960251	2	NUT, Hex Center Lock Jam, 3/8-16
0220	724823	1	BOLT, Carriage, Short Neck, 3/8-16 x 1-1/4, G5
0230	722132	1	AUGER IDLER
0240	722118	1	SPACER, 1/2 ID x 1 OD x 1-3/4"
0250	1960027	1	WASHER, 1/2
0260	1733451	1	ARM, Control
0270	725367	1	PIN, Hair
0280	1736381	1	PIN, Clevis
0290	1740906BM	1	PANEL, Bottom
0300	1927429	12	CAPSCREW, Hex Washer Head, Taptite, 1/4-20 x 5/8
0310	722455	1	SPRING, Extension, Auger
0320	1740572C	1	FRAME
0330	1733583C	1	PLATE, Engine Mount
0340	722838	4	CAPSCREW, Hex Washer Head, 5/16-18 x 1/2
0350	1664847	6	CAPSCREW, Hex Washer Head, Taptite, 5/16-18 x 3/4
0360	1733923	1	BELT COVER ASSEMBLY
0370	722887	2	SCREW, Hex Washer Head, Tapping, SEMS, 1/4 x 3/4
0390	1750241	1	WATER SHIELD ASSEMBLY (Includes Ref. No. 0390-10)
0390-10	1733898	1	SEAL, Foam
0400	1750172	1	SEAL, Strip
0410	725996	2	CAPSCREW, Hex, 5/16-24 x 1
0420	7023590	1	PIN, Cotter, Self Lock, 1/4

Footnotes

Note* See your local Briggs & Stratton Distributor for Parts & Service.

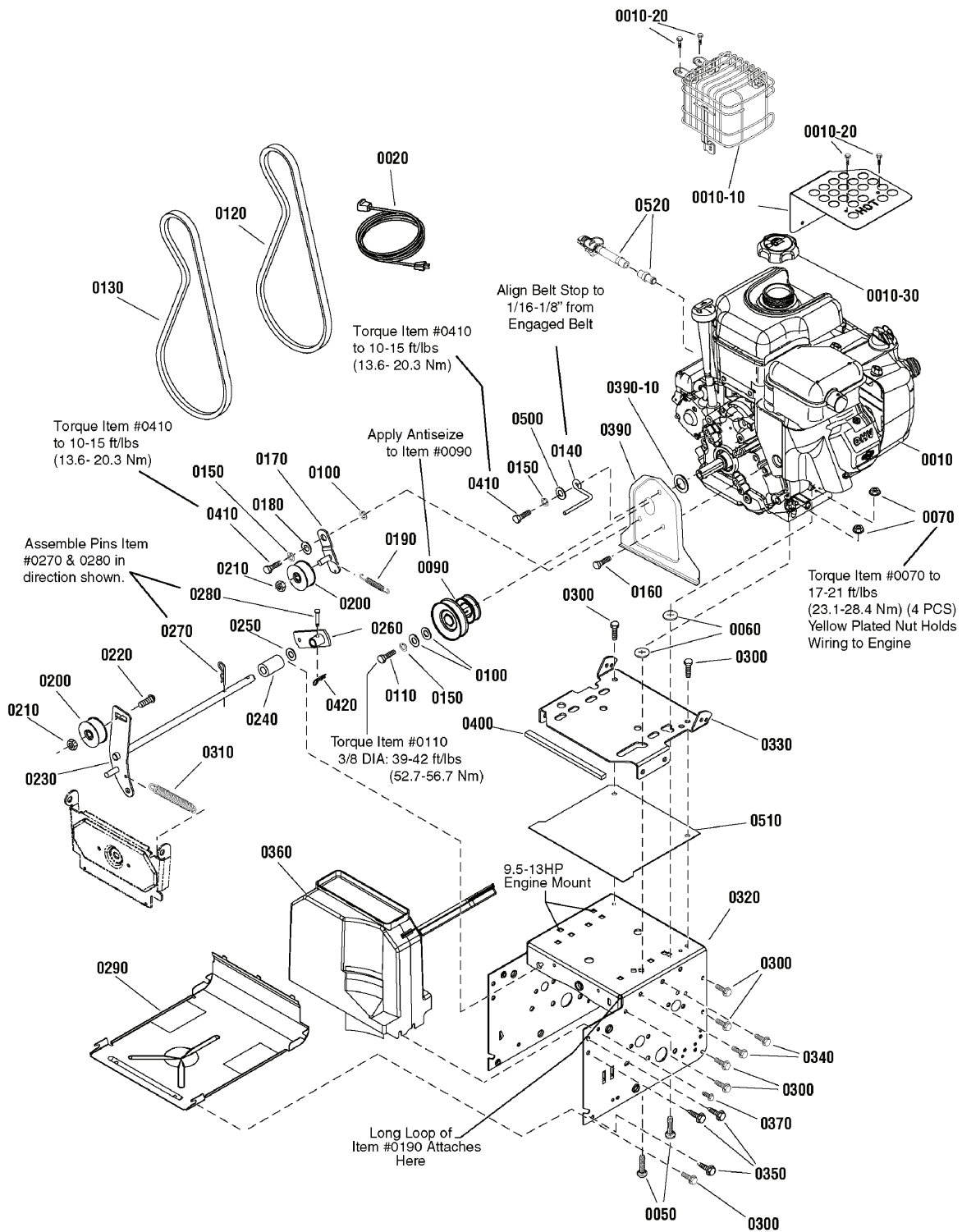
The above parts group applies to the following Mfg. Nos.:

1695986 - L1226E
1695995 - (L1226EX)

Engine & Frame Group - 11.5TP

989073

NOTE: Unless noted otherwise,
use the standard hardware torque
specification chart.



The above parts group applies to the following Mfg. Nos.:

1695986 - L1226E

1695995 - (L1226EX)

Engine & Frame Group - 11.5TP

REF NO	PART NO.	QTY.	DESCRIPTION
0500	7091528	1	WASHER, Flat, 3/8
0510	1750135	1	SEAL, Engine Plate

Not for
Reproduction

Footnotes

Note* See your local Briggs & Stratton Distributor for Parts & Service.

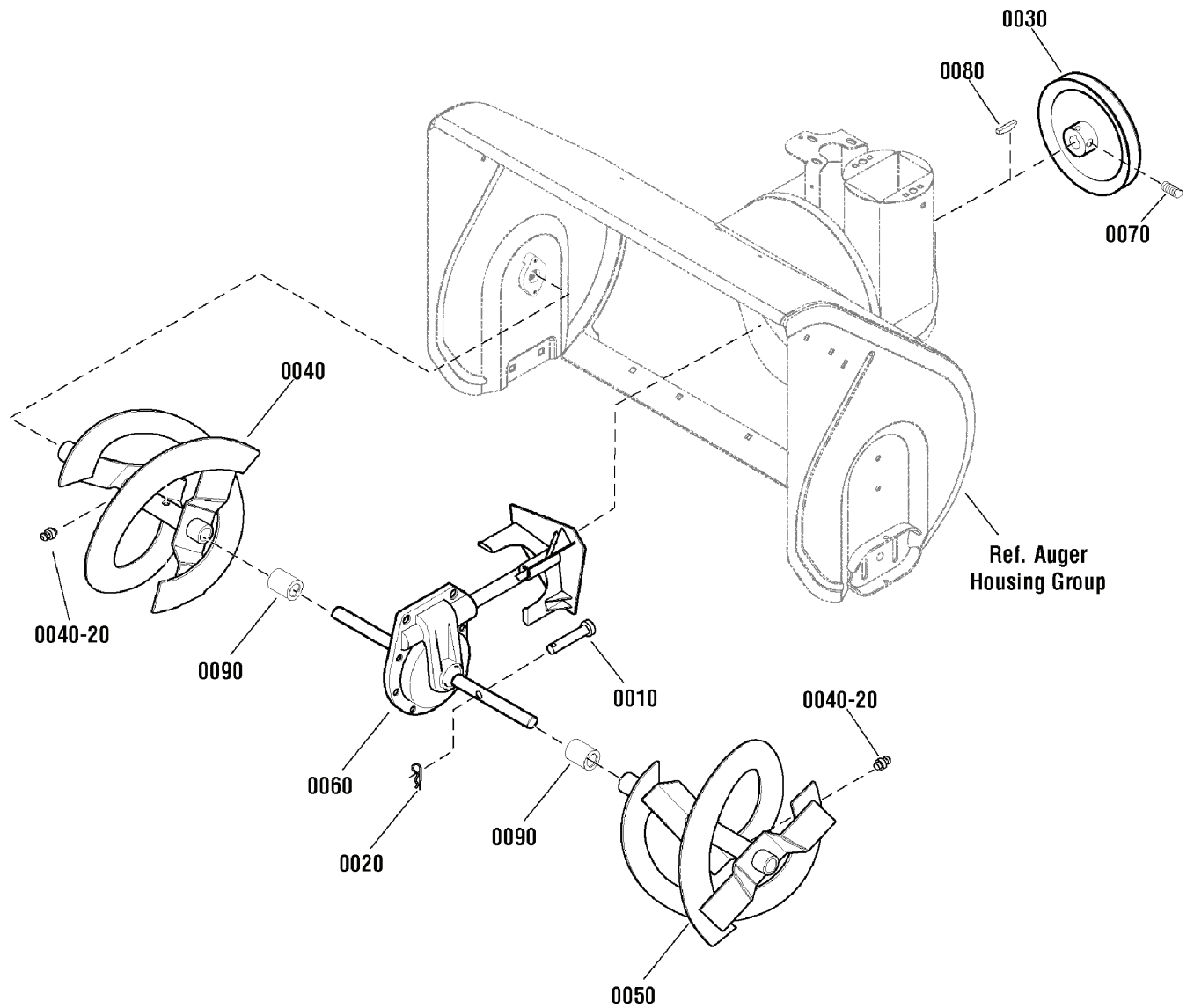
The above parts group applies to the following Mfg. Nos.:

1695986 - L1226E
1695995 - (L1226EX)

Auger Drive Group - Medium Duty

NOTE: Unless noted otherwise,
use the standard hardware torque
specification chart.

2989382



The above parts group applies to the following Mfg. Nos.:

1695986 - L1226E

1695995 - (L1226EX)

Auger Drive Group - Medium Duty

REF NO	PART NO.	QTY.	DESCRIPTION
0010	1668344SM	2	PIN, Shear
0020	7023590SM	2	PIN, Cotter
0030	1732185SM	1	PULLEY
0040	1737082BMYP	1	AUGER ASSEMBLY, R.H. (Includes Ref. No. 0040-20)
0040-20	10104MA	2	FITTING, Zerk
0050	1737083BMYP	1	AUGER ASSEMBLY, L.H. (Includes Ref. No. 0040-20)
0060	1739656YP	1	GEAR CASE ASSEMBLY, Med. Duty
0070	1928721SM	2	SCREW, Set, 5/16-18 x 1/2, G8
0080	2818312SM	1	KEY, Woodruff
0090	1733406	2	SPACER, Auger

Not for
Reproduction

Footnotes

The above parts group applies to the following Mfg. Nos.:

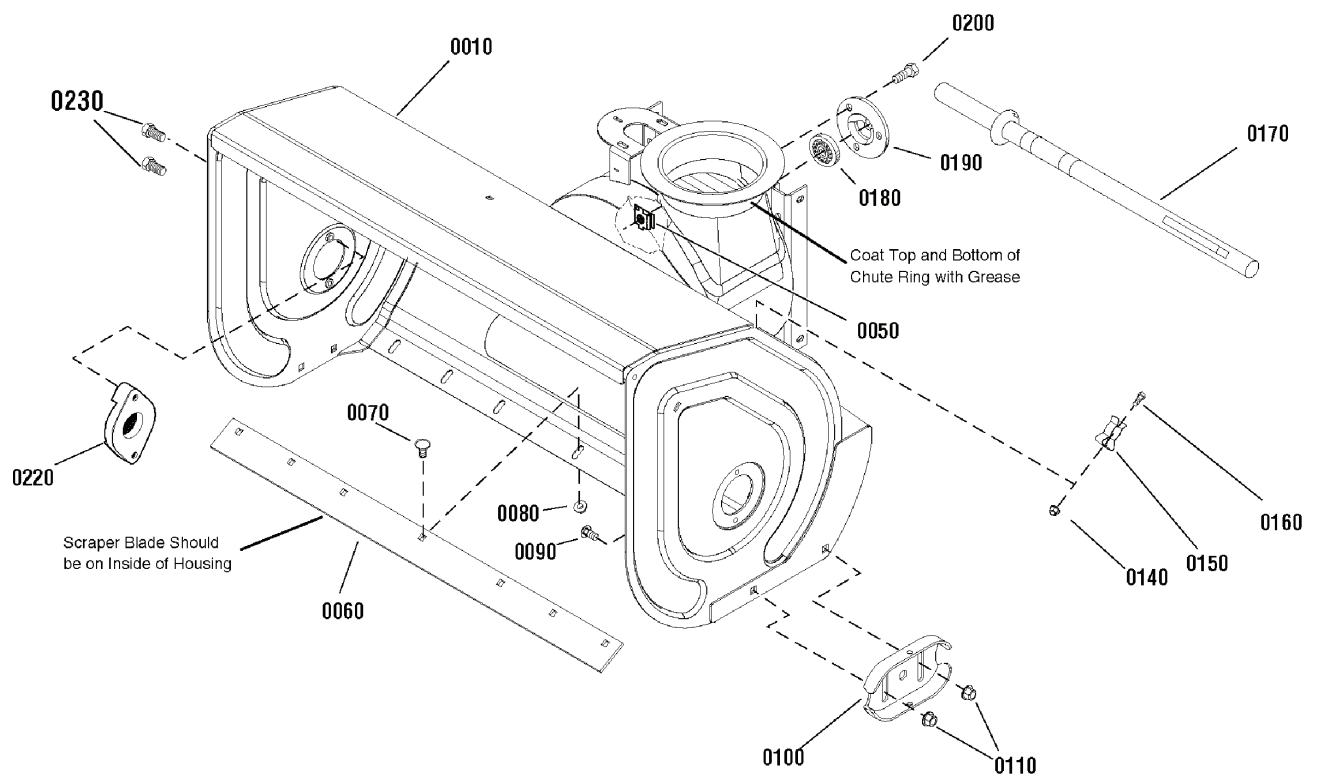
1695986 - L1226E

1695995 - (L1226EX)

Auger Housing Group

989357

NOTE: Unless noted otherwise,
use the standard hardware torque
specification chart.



The above parts group applies to the following Mfg. Nos.:

1695986 - L1226E

1695995 - (L1226EX)

Auger Housing Group

REF NO	PART NO.	QTY.	DESCRIPTION
0010	1752236C	1	AUGER HOUSING ASSEMBLY, 26"
0050	1739305	3	NUT, Hex Flange, 5/16-18
0060	1732384A	1	BLADE, Scraper, 26"
0070	1960699	5	BOLT, Carriage, 5/16-18 x 5/8, G5
0080	1935048	5	NUT, Hex Flange, Two Way Lock, 5/16-18
0090	1960711	4	BOLT, Carriage, 5/16-18 x 3/4, G5
0100	1727854BM	2	SHOE, Skid, Reversible
0110	1960687	4	NUT, Hex Flange, ESNA, 3/8-16
0140	722401	2	NUT, Nylock, 10 x 24
0150	1736620	2	CLAMP, Retainer
0160	1960569	2	SCREW, Truss Head Torx, #10-24 x 3/8
0170	1736094	1	BRUSH, Cleanout
0180	2108202	1	BEARING, Ball
0190	1665982	1	RETAINER, Ball Bearing
0200	1931333	3	BOLT, Carriage, 5/16-18 x 3/4, G5
0220	724427	2	BEARING, Auger Shaft (26" Housing Only)
0230	722839	4	CAPSCREW, 5/16-18 x 3/4 (26" Housing Only)

Not for
Reproduction

Footnotes

The above parts group applies to the following Mfg. Nos.:

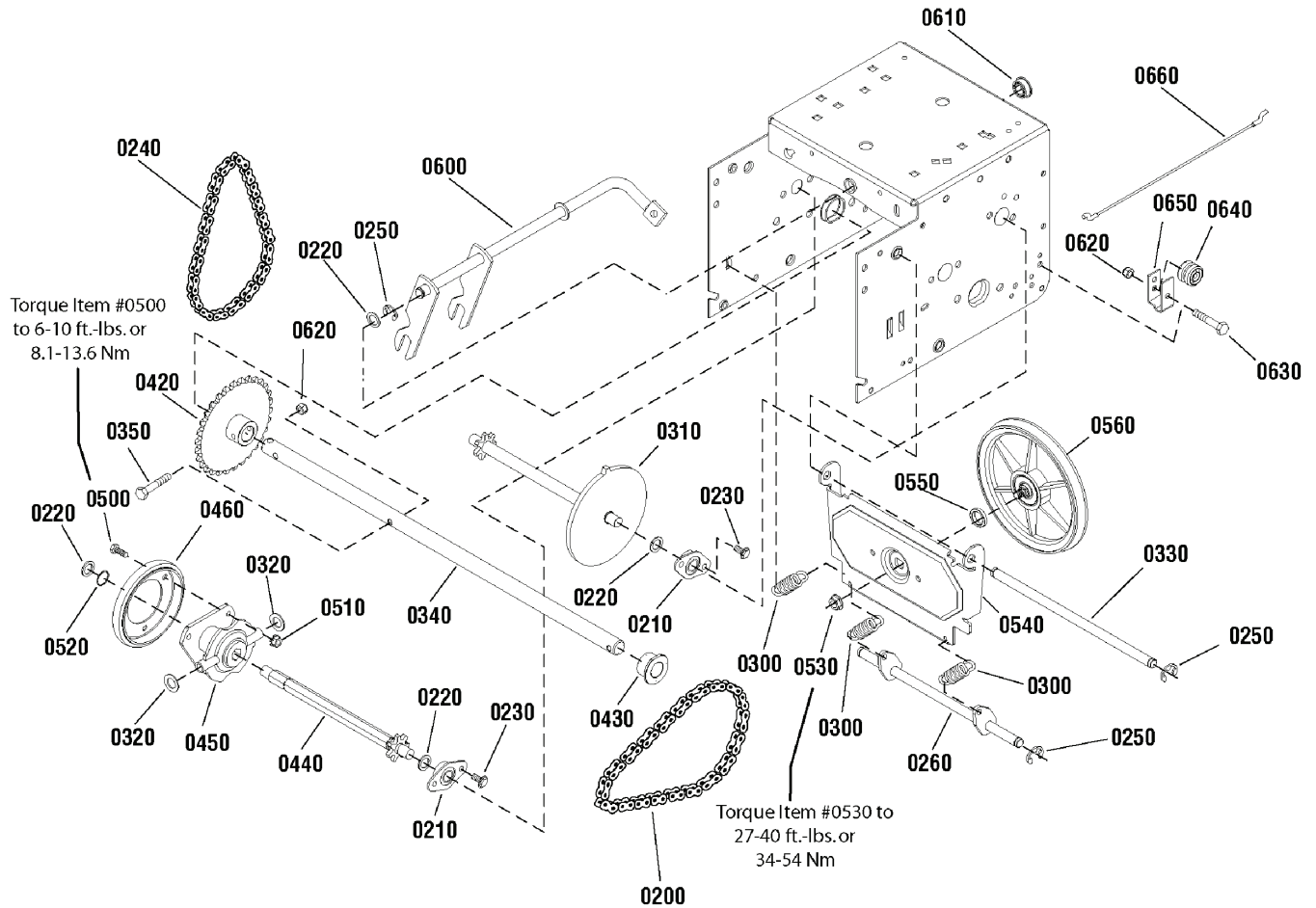
1695986 - L1226E

1695995 - (L1226EX)

Traction Drive Group - Standard

988389

NOTE: Unless noted otherwise,
use the standard hardware torque
specification chart.



The above parts group applies to the following Mfg. Nos.:

1695986 - L1226E

1695995 - (L1226EX)

Traction Drive Group - Standard

REF NO	PART NO.	QTY.	DESCRIPTION
0200	724613	1	CHAIN, Roller, 19"
0210	723655	4	RETAINER & BUSHING ASSEMBLY
0220	724619	5	WASHER, Flat, 1/2
0230	1924856	8	CAPSCREW, Hex Washer Head, Taptite, 5/16-18 x 1/2
0240	724627	1	CHAIN, Roller, 18"
0250	721910	5	RETAINER, Ring, 7/16
0260	722377	1	SPRING LINK
0300	1736469	3	SPRING, Extension
0310	722081	1	SPROCKET
0320	1960027	2	WASHER, 1/2
0330	722082	1	AXLE, Swing Plate
0340	722211	1	AXLE, 23-1/8 Lg
0350	720220	1	BOLT, Hex, 1/4-20 x 1-3/4, G8
0420	722080	1	AXLE SPROCKET, 30T
0430	722091	2	BEARING, Axle, D-Hole
0440	722083	1	HEX SHAFT & SPROCKET ASSEMBLY
0450	1739282	1	HUB, Friction Wheel and Bearing
0460	722185	1	WHEEL, Friction
0500	1921959	3	CAPSCREW, Hex Head, 1/4-20 x 5/8, G5
0510	1928372	3	NUT, Hex Keps, 1/4-20
0520	1733326	1	RING, Retaining
0530	722391	1	NUT, Flange Lock, 3/8-24
0540	722069	1	PLATE, Swinging
0550	722110	1	SPACER, Friction Pulley
0560	722092	1	FRICITION PULLEY ASSEMBLY
0600	722087	1	SPEED SELECTOR
0610	724636	1	BEARING, Flange, 1/2ID x 7/8OD
0620	1920397	2	NUT, Hex Lock, ESNA Light, 1/4-20
0630	1922837	1	CAPSCREW, Hex Head, 1/4-20 x 1-1/2, G5
0640	724621	1	SPOOL CABLE, Auger Control
0650	722070	1	BRACKET, Cable Spool
0660	722095	1	CABLE, Front Lower Drive

Footnotes

The above parts group applies to the following Mfg. Nos.:

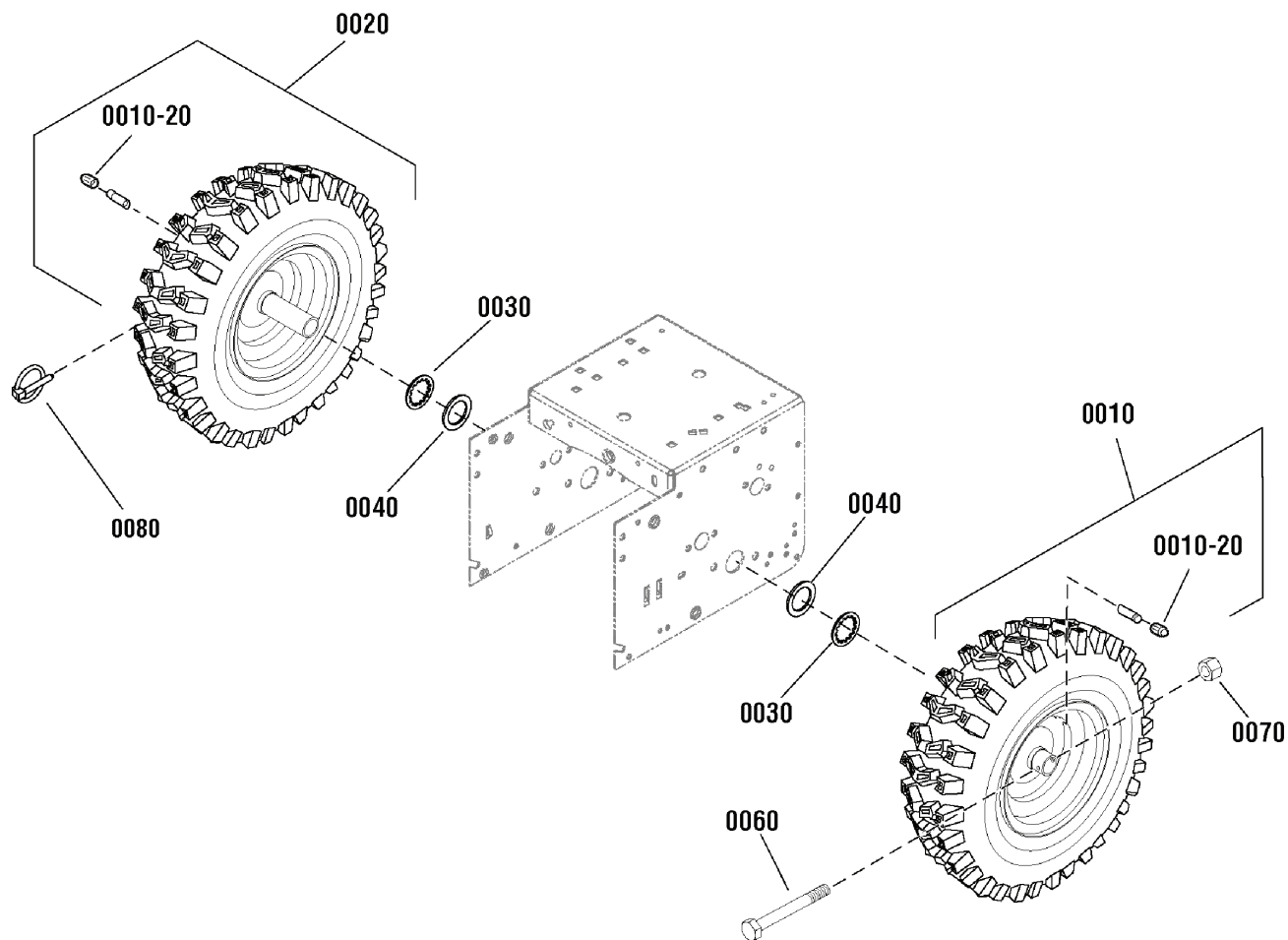
1695986 - L1226E

1695995 - (L1226EX)

Wheels & Tires Group

NOTE: Unless noted otherwise,
use the standard hardware torque
specification chart.

2989661



The above parts group applies to the following Mfg. Nos.:

1695986 - L1226E

1695995 - (L1226EX)

Wheels & Tires Group

REF NO	PART NO.	QTY.	DESCRIPTION
0010	1739926	1	WHEEL & TIRE ASSEMBLY, 16 X 4.8, LH
0020	1739927	1	WHEEL & TIRE ASSEMBLY, 16 X 4.8, RH
0010-20	2172353	2	VALVE STEM & CAP
0030	1657528	2	RING, Retaining, EXT, Self Lock, 3/4
0040	725394	2	WASHER, Flat, 3/4
0060	724545	1	CAPSCREW, Hex, 1/4-20 x 1-3/4, G5
0070	722400	1	NUT, Nylock, 1/4 x 20
0080	725431	1	PIN, Klik

Not for
Reproduction

Footnotes

The above parts group applies to the following Mfg. Nos.:

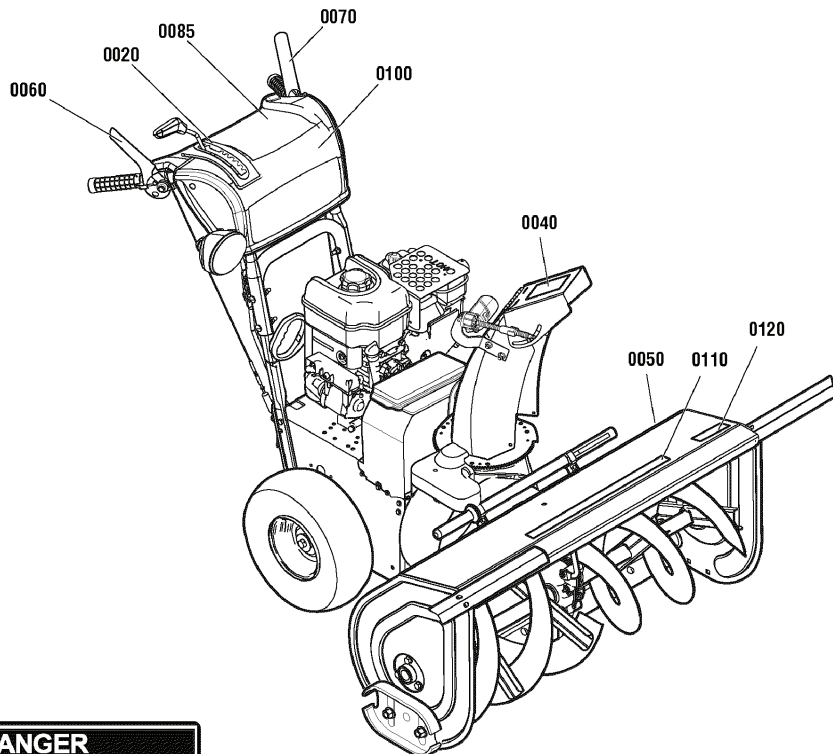
1695986 - L1226E

1695995 - (L1226EX)

Decals Group

988966

NOTE: Unless noted otherwise, use the standard hardware torque specification chart.



⚠ DANGER	
Amputation Hazard • Contact with auger will cause serious injury. • Keep hands, feet and clothing away. • Keep bystanders away.	Risque d'amputation • Tout contact avec le tambour provoquera de graves blessures. • Tenez vos pieds, vos mains et vêtements à distance. • Tenez les spectateurs à distance.
Thrown Objects Hazard • Never direct discharge chute towards persons or property.	Danger objets projetés • Ne jamais diriger la chute en direction des personnes ou biens matériels.
Read the operator's manual for operating and safety instructions.	Lirez les consignes de sécurité et d'utilisation dans le manuel d'utilisation.
Shut off engine and remove key before performing maintenance or repair work.	Arrêter le moteur et retirer la clé avant d'effectuer tout entretien ou toute réparation.

0050



0050



0100



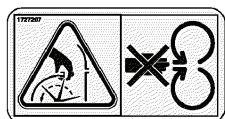
0020

MODEL #

0120

⚠ DANGER	
Amputation hazard Contact with moving parts inside chute will cause serious injury. • Shut off engine before unclogging discharge chute. • Use clean-out tool, not hands!	Risque d'amputation Tout contact avec des pièces en mouvement à l'intérieur de la goulotte provoquera de graves blessures. • Arrêter le moteur avant de dégager la goulotte d'éjection. • Utiliser l'outil de dégagement, pas les mains!

0040



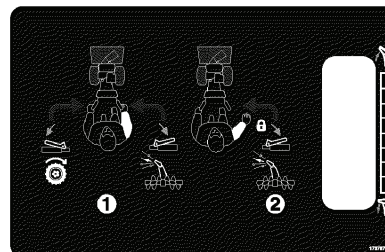
0040



0070



0060



0085



0110

The above parts group applies to the following Mfg. Nos.:

- 1695986 - L1226E
- 1695995 - (L1226EX)

Decals Group

REF NO	PART NO.	QTY.	DESCRIPTION
0020	1751582	1	DECAL, Shift
0040	1737865	1	DECAL, Danger Chute, FR/ENG (Domestic)
0040	1727207	1	DECAL, Danger Chute (CE/Export Only)
0050	1737866	1	DECAL, Danger Auger, FR/ENG (Domestic Only)
0050	1737867	1	DECAL, Danger Auger (CE/Export Only)
0060	1737869	1	DECAL, Auger Control Symbols
0070	1737870	1	DECAL, Traction Control Symbols
0085	1737878	1	DECAL, Controls
0100	1733199	1	DECAL, Simplicity Swoosh, Dash
0110	1733247	1	DECAL, Simplicity Swoosh, Auger
0120	1734636	1	DECAL, Model, 1226L

Not for
Reproduction

Footnotes

The above parts group applies to the following Mfg. Nos.:

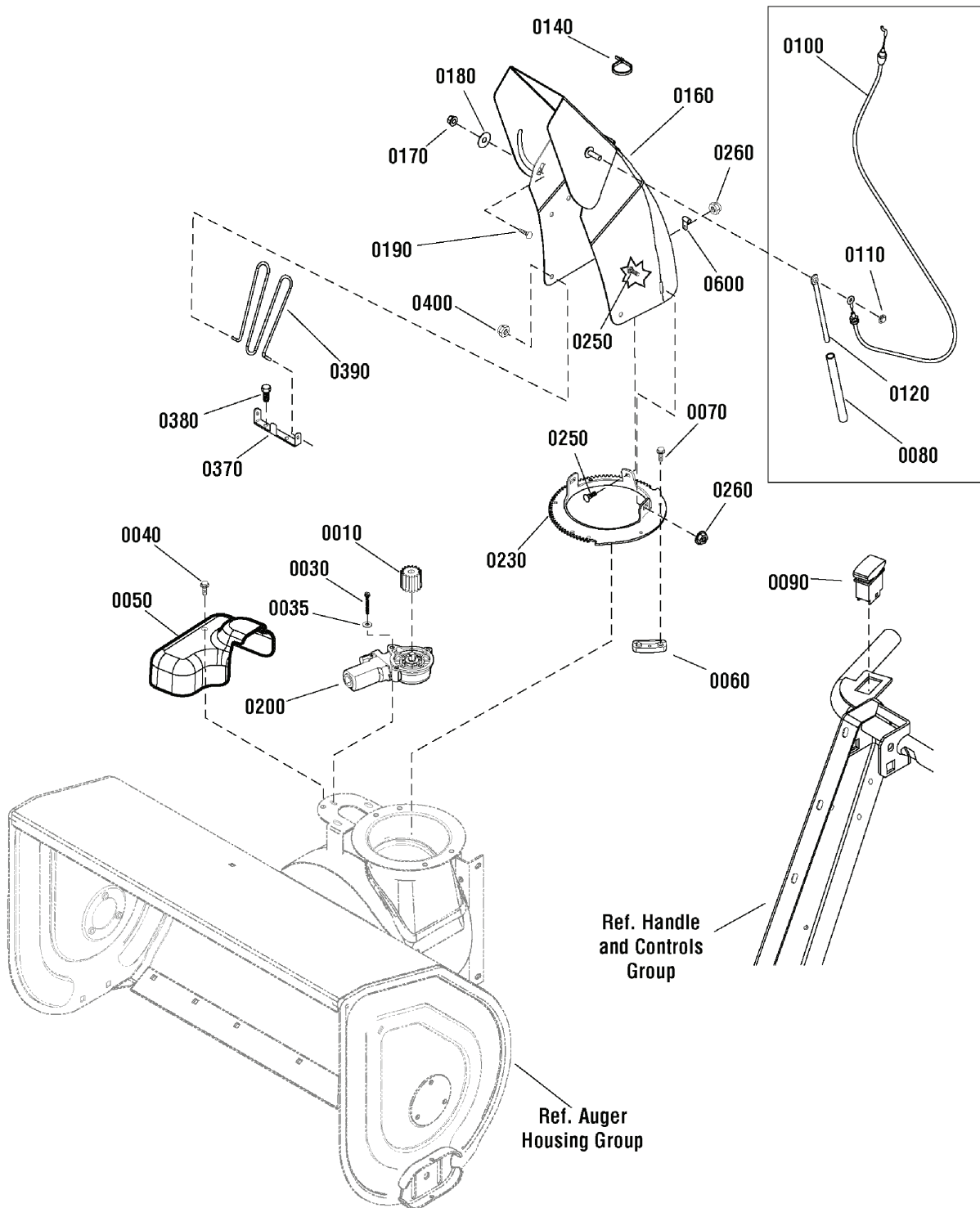
1695986 - L1226E

1695995 - (L1226EX)

Chute & Rotation Group - Electric Chute/Remote Deflector 26"

NOTE: Unless noted otherwise,
use the standard hardware torque
specification chart.

2989699



The above parts group applies to the following Mfg. Nos.:

1695986 - L1226E

1695995 - (L1226EX)

Chute & Rotation Group - Electric Chute/Remote Deflector 26"

REF NO	PART NO.	QTY.	DESCRIPTION
0010	1728967	1	PINION, 1-1/4 Lg
0030	2860604	3	CAPSCREW, Hex Washer, #10 x 1-1/4, G2
0035	7091552	3	WASHER, Flat, 7/32 x 1/2 OD
0040	1925592	1	CAPSCREW, Hex Washer, Self-Tapping, 1/4-20 x 3/8
0050	1737455	1	COVER, Electric Chute Rotation
0060	7011938	3	RETAINER, Spout
0070	1960001	3	CAPSCREW, Hex Washer, 10-14 x 5/8
0080	1734647	1	SPRING, Compression, 9/16 OD X 6-1/16 Lg
0090	1752240	1	SWITCH, Rocker, Chute Rotation, 5-Pin
0100	1750623	1	CABLE, Deflector Control
0110	1932718	1	PUSHNUT, 5/16 Dia. 5/8 OD
0120	1734708A	1	ROD, 5/16 Dia., 5.88 Lg
0140	1701011	1	TIE, Self Locking, 7-5/16 Lg
0160	1738230C	1	CHUTE ASSEMBLY, 30"
0170	1960686	1	NUT, Hex Flange, 5/16-18
0180	2860210	1	WASHER, Nylon, 3/8
0190	1931333	1	BOLT, Carriage, 5/16-18 X 0 3/4, G5
0200	1739309	1	MOTOR, Spout Rotator, 38"
0230	1737962	1	GEAR, Chute, Tall
0250	1931317	3	BOLT, Carriage, 1/4-20 x 3/4
0260	2860694	3	NUT, Hex Flange, 1/4-20, ESNA
0370	1737683A	1	BRACKET, Chute Guard (CE/Export)
0380	1925003	2	CAPSCREW, Hex Washer, Taptite, 1/4-20 x 1/2 (CE/Export)
0390	1733475	1	GUARD, Chute (CE/Export)
0400	1960140	2	PUSHNUT, 3/16 Dia. (CE/Export)
0600	1739331	1	CLIP

Not for
Reproduction

Footnotes

The above parts group applies to the following Mfg. Nos.:

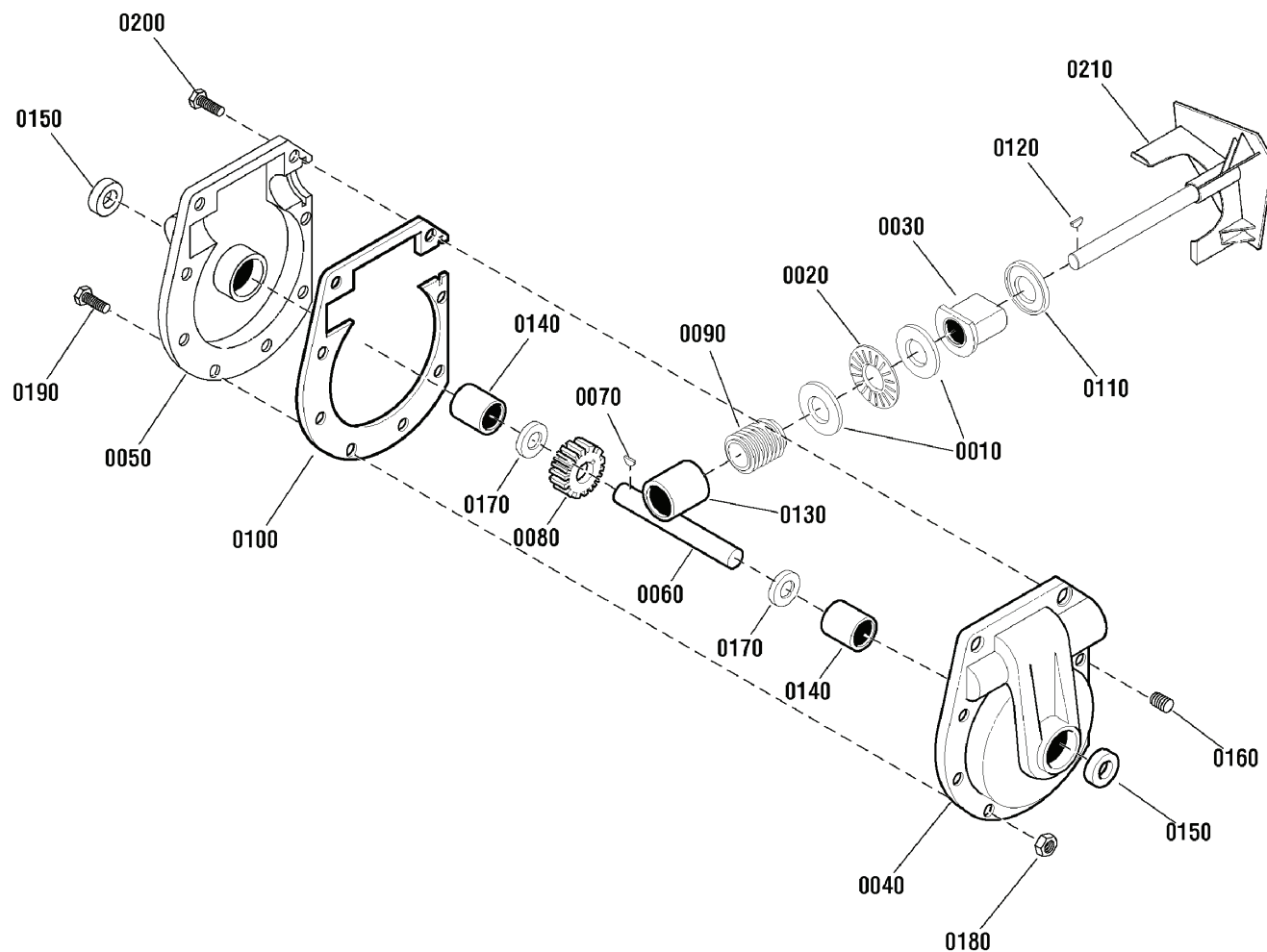
1695986 - L1226E

1695995 - (L1226EX)

Gear Case Assembly - Medium Duty

2988467a

NOTE: Unless noted otherwise,
use the standard hardware torque
specification chart.



The above parts group applies to the following Mfg. Nos.:

1695986 - L1226E

1695995 - (L1226EX)

Gear Case Assembly - Medium Duty

REF NO	PART NO.	QTY.	DESCRIPTION
0010	724079	2	WASHER, Thrust
0020	724352	1	BEARING, Roll
0030	724729	1	BEARING, Flange
0040	725981	1	CASE, Gear, Left
0050	725982	1	CASE, Gear, Right
0060	1736711	1	SHAFT, Auger Out
0070	725433	1	KEY, Woodruff
0080	724419	1	GEAR, Worm
0090	724421	1	WORMGEAR, 1-3/4 O.D. x 1-1/2 Long
0100	725983	1	GASKET
0110	724423	1	RING, Quad
0120	724366	1	KEY, HI-Pro
0130	724420	1	BEARING, Sleeve, 3/4 ID x 7/8 OD
0140	724424	2	BEARING, Sleeve 1 x 1-1/4 x 1
0150	725874	2	SEAL, Oil
0160	724426	1	PLUG, Pipe
0170	724425	2	WASHER, Flat
0180	725338	8	NUT, Hex Flange, Serrated Lock, 5/16-24
0190	725996	7	BOLT, Hex, 5/16-24 x 1
0200	723575	1	SCREW, 5/16-24 x 1-1/2
0210	1736709A	1	IMPELLER

Not for
Reproduction

Footnotes

The above parts group applies to the following Mfg. Nos.:

1695986 - L1226E

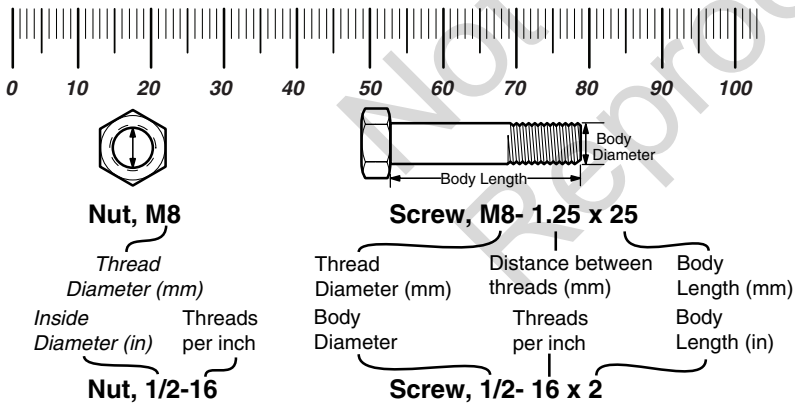
1695995 - (L1226EX)

Hardware Identification & Torque Specifications

Torque Specification Chart								
FOR STANDARD METRIC MACHINE HARDWARE (Tolerance ± 20%)								
Property Class	5.6		8.8		10.9		12.9	
	Class 5.6		Class 8.8		Class 10.9		Class 12.9	
Size Of Hardware	in/lbs	Nm.	in/lbs	Nm.	in/lbs	Nm.	in/lbs	Nm.
	ft/lbs		ft/lbs		ft/lbs		ft/lbs	
M3	5.88	.56	13.44	1.28	19.2	1.80	22.92	2.15
M4	13.44	1.28	30.72	2.90	43.44	4.10	52.56	4.95
M5	26.4	2.50	60.96	5.75	5.97	8.10	7.15	9.7
M6	44.64	4.3	7.3	9.9	10.3	14	12.1	16.5
M7	5.2	7.1	12.1	16.5	16.9	23	19.9	27
M8	7.7	10.5	17.7	24	25	34	29	40
M10	15	21	35	48	50	67	59	81
M12	26	36	61	83	86.2	117	103	140
M14	42	58	101	132	136	185	162	220
M16	64	88	147	200	210	285	250	340
M18	89	121	202	275	287	390	346	470
M20	126	171	290	390	405	550	486	660
M22	169	230	390	530	559	745	656	890
M24	217	295	497	375	708	960	840	1140
M27	320	435	733	995	1032	1400	1239	1680
M30	435	590	995	1350	1401	1900	1681	2280
M33	590	800	1349	1830	1902	2580	2278	3090
M36	759	1030	1740	2360	2441	3310	2935	3980
M39	988	1340	2249	3050	3163	4290	3798	5150

Torque Specification Chart						
FOR STANDARD MACHINE HARDWARE (Tolerance ± 20%)						
Hardware Grade	No Marks		SAE Grade 5		SAE Grade 8	
	SAE Grade 2		SAE Grade 5		SAE Grade 8	
Size Of Hardware	in/lbs	Nm.	in/lbs	Nm.	in/lbs	Nm.
	ft/lbs		ft/lbs		ft/lbs	
8-32	19	2.1	30	3.4	41	4.6
8-36	20	2.3	31	3.5	43	4.9
10-24	27	3.1	43	4.9	60	6.8
10-32	31	3.5	49	5.5	68	7.7
1/4-20	66	7.6	8	10.9	12	16.3
1/4-28	76	8.6	10	13.6	14	19.0
5/16-18	11	15.0	17	23.1	25	34.0
5/16-24	12	16.3	19	25.8	29	34.0
3/8-16	20	27.2	30	40.8	45	61.2
3/8-24	23	31.3	35	47.6	50	68.0
7/16-14	30	40.8	50	68.0	70	95.2
7/16-20	35	47.6	55	74.8	80	108.8
1/2-13	50	68.0	75	102.0	110	149.6
1/2-20	55	74.8	90	122.4	120	163.2
9/16-12	65	88.4	110	149.6	150	204.0
9/16-18	75	102.0	120	163.2	170	231.2
5/8-11	90	122.4	150	204.0	220	299.2
5/8-18	100	136	180	244.8	240	326.4
3/4-10	160	217.6	260	353.6	386	525.0
3/4-16	180	244.8	300	408.0	420	571.2
7/8-9	140	190.4	400	544.0	600	816.0
7/8-14	155	210.8	440	598.4	660	897.6
1-8	220	299.2	580	788.8	900	1,244.0
1-12	240	326.4	640	870.4	1,000	1,360.0

The guides and ruler furnished below are designed to help you select the appropriate hardware.



Standard Hardware Sizing

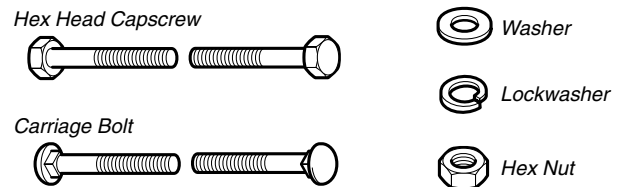
When a washer or nut is identified as **1/2"** (M8), this is the *Nominal size*, meaning the *inside diameter* is 1/2 inch (8mm metric thread diameter); if a second number is present it represents the *threads per inch* (distance between threads).

When bolt or capscrew is identified as **1/2 - 16 x 2"** (M8 - 1.25 x 50), this means the *Nominal size*, or body diameter is 1/2 inch (8mm metric thread diameter), the second number, 16, represents the *threads per inch*, (1.25 thread diameter). The final number is the body length of the bolt or screw, 2 inches (50mm).

NOTES

- These torque values are to be used for all hardware excluding: locknuts, self-tapping screws, thread forming screws, sheet metal screws and socket head setscrews.
- Recommended seating torque values for locknuts:
 - for prevailing torque locknuts - use 65% of grade 5 torques.
 - for flange whizlock nuts and screws - use 135% of grade 5 torques.
- Unless otherwise noted on assembly drawings, all torque values must meet this specification.

Common Hardware Types



Wrench & Fastener Size Guide

1/4" Bolt or Nut Wrench—7/16"	5/16" Bolt or Nut Wrench—1/2"	3/8" Bolt or Nut Wrench—9/16"	7/16" Bolt or Nut Wrench (Bolt)—5/8" Wrench (Nut)—11/16"	1/2" Bolt or Nut Wrench—3/4"
M6 Bolt or Nut Wrench—10mm	M8 Bolt or Nut Wrench—13mm	M10 Bolt or Nut Wrench—17mm	M12 Bolt or Nut Wrench—19mm	M14 Bolt or Nut Wrench—22mm

**IT IS THE POLICY OF BRIGGS & STRATTON CORP. TO IMPROVE ITS PRODUCTS
WHENEVER IT IS POSSIBLE AND PRACTICAL TO DO SO. WE RESERVE THE RIGHT TO
MAKE CHANGES OR ADD IMPROVEMENTS AT ANY TIME WITHOUT INCURRING ANY
OBLIGATION TO MAKE SUCH CHANGES ON PRODUCTS.**

Briggs & Stratton Yard Power Products Group

3515 N. 124 Street / PO Box 702
Wauwatosa, WI 53222 USA

www.simplicitymfg.com

© Copyright 2011 by Briggs & Stratton Corporation
Milwaukee, WI, USA. All rights reserved