

Attachment Illustrated Parts List



Attachment

Mfg. No. Description
1695353 Catcher, Clean Sweep Twin, 38"

Briggs & Stratton Yard Power Products Group

3515 N. 124 Street / PO Box 702
Wauwatosa, WI 53222 USA

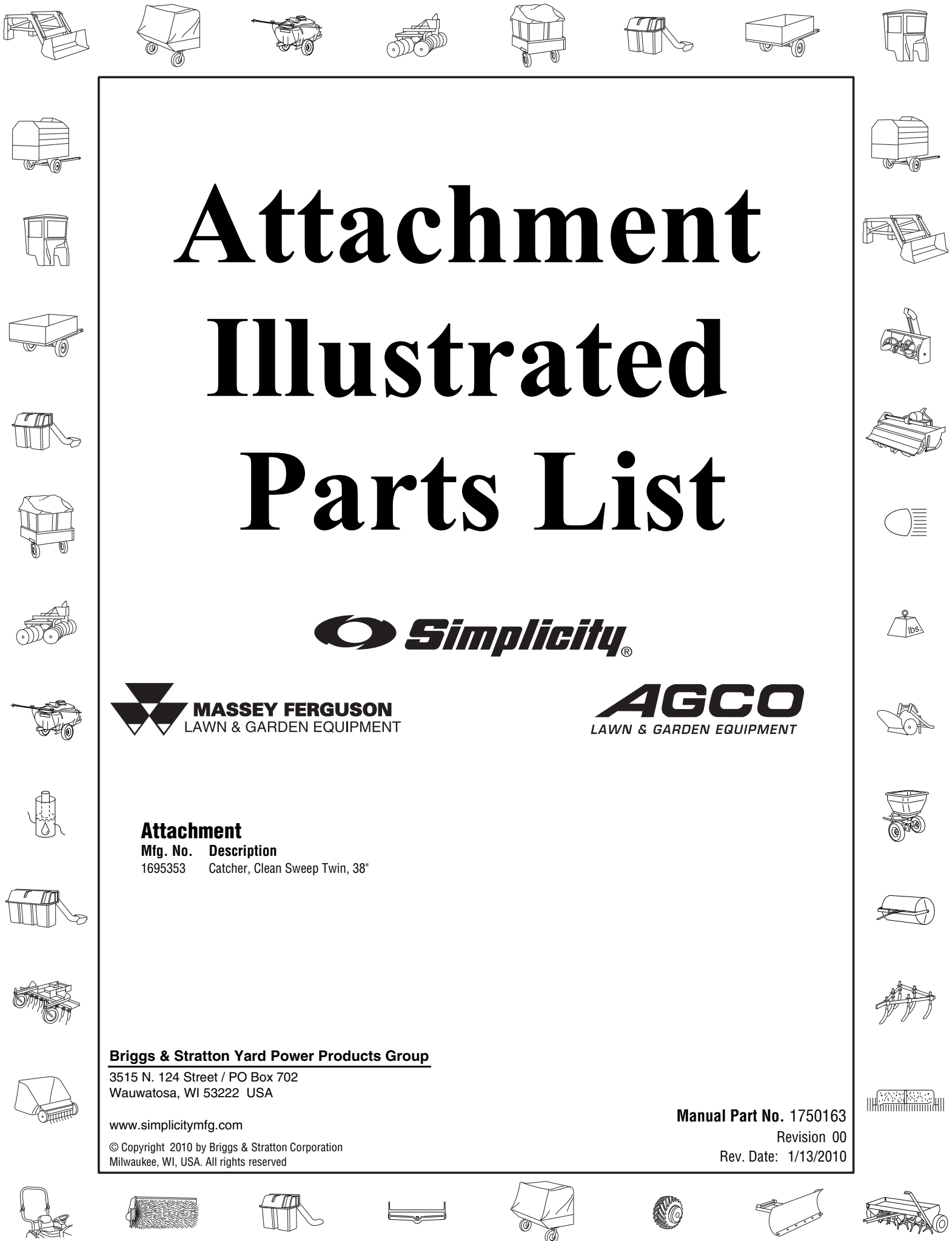
www.simplicitymfg.com

© Copyright 2010 by Briggs & Stratton Corporation
Milwaukee, WI, USA. All rights reserved

Manual Part No. 1750163

Revision 00

Rev. Date: 1/13/2010



Not for
Reproduction

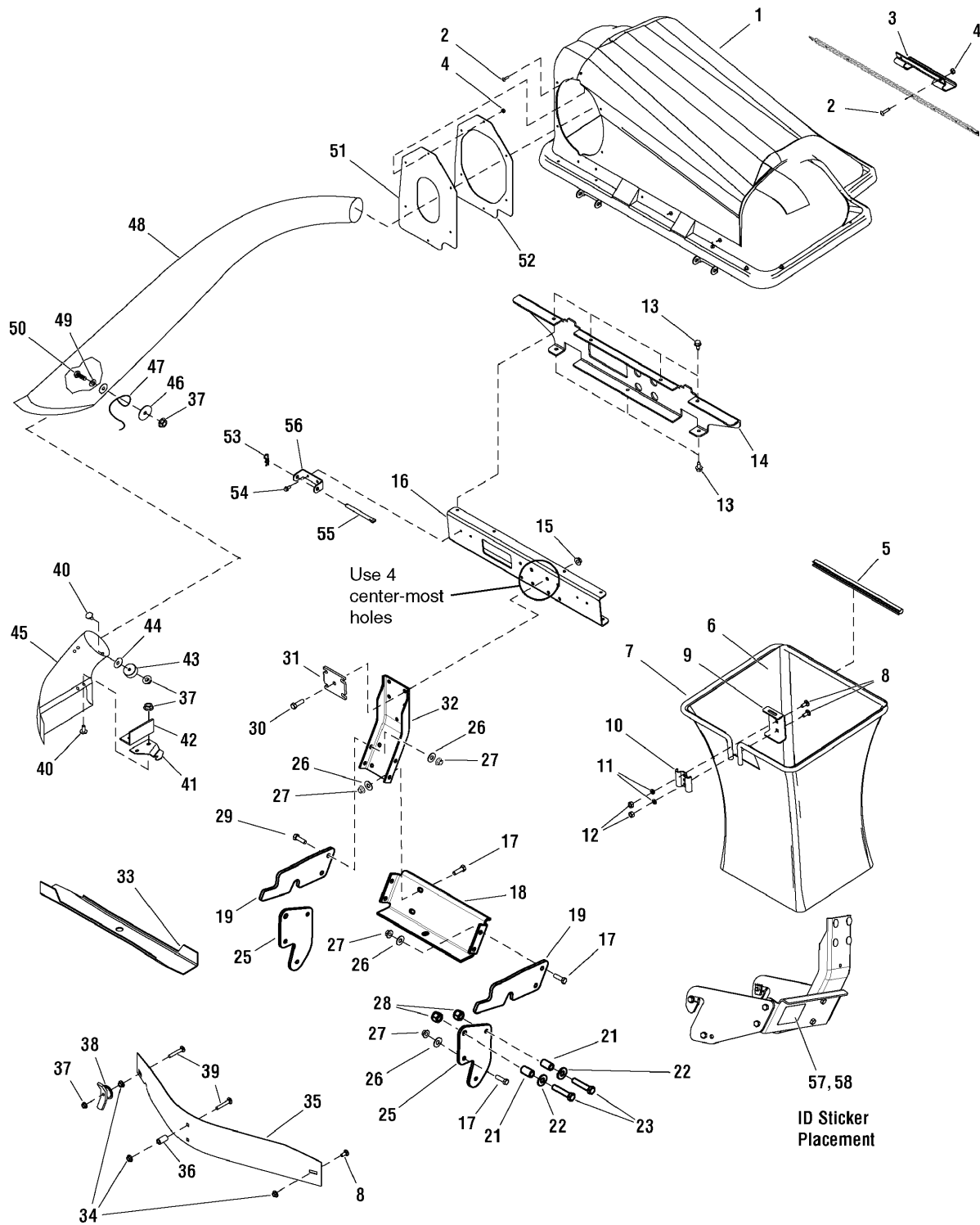
| PRODUCT COMPONENTS | PAGES |
|---|--------------------------|
| Twin Catcher Assembly | 4 |
| Torque Specification Chart | Inside Back Cover |

Not for
Reproduction

Twin Catcher Assembly

NOTE: Unless noted otherwise,
use the standard hardware torque
specification chart.

1695353



The above parts group applies to the following Mfg. Nos.:
1695353 - Catcher

Twin Catcher Assembly

| REF NO | PART NO. | QTY. | DESCRIPTION |
|--------|------------|------|---|
| 1 | 1733564SM | 1 | COVER ASSEMBLY, Twin Catcher |
| 2 | 1960404SM | 8 | SCREW, Truss Head Phillips, 10-24 x 3/4 |
| 3 | 054537MA | 1 | HANDLE, Plastic |
| 4 | 1933896SM | 8 | NUT, Hex Lock w/Nylon Insert, 10-24 |
| 5 | 1675707SM | 2 | CLIP, Tube Grass Bag |
| 6 | 1703764SM | 2 | BAG, Grass White Poly |
| 7 | 1733491SM | 2 | HOOP, Twin |
| 8 | 1931333SM | 5 | BOLT, Carriage, 5/16-18 x 3/4 (Qty. of 1 included in Ref. No 57) |
| 9 | 1703807ASM | 2 | HANGER, Grass Bag |
| 10 | 1672023ASM | 2 | CLAMP, Grass Bag Plain |
| 11 | 1917356SM | 4 | LOCKWASHER, Spring, 5/16 |
| 12 | 1917372SM | 4 | NUT, Hex, 5/16-18 |
| 13 | 1664847SM | 7 | SCREW, Hex Washer Head Taptite, 5/16-18 x 3/4 |
| 14 | 1733613ASM | 1 | BRACKET, Tab Cross Support Twin |
| 15 | 1928352SM | 8 | NUT, Hex Whiz Lock Flange (Included in Ref. No 59) |
| 16 | 1734228ASM | 1 | CHANNEL, Cross Support Twin |
| 17 | 1921210SM | 6 | CAPSCREW, Hex Head, 5/16-18 x 1 (Qty. of 2 included in Ref. No 59) |
| 18 | 1703744ASM | 8 | BRACKET, Lower |
| 19 | 1723067ASM | 2 | SUPPORT, Side Hitch |
| 21 | 1668662SM | 4 | SPACER, 1/2 ID x 1-17/64 (Included in Ref. No 59) |
| 22 | 1924361SM | 4 | WASHER, 1/2 x 1-1/4 OD (Included in Ref. No 59) |
| 23 | 1960462SM | 4 | CAPSCREW, Hex Head, 1/2-13 x 2-1/2 (Included in Ref. No 59) |
| 25 | 1723044ASM | 2 | PLATE, Side |
| 26 | 1916965SM | 8 | LOCKWASHER, Spring, 3/8 (Qty. of 2 included in Ref. No 59) |
| 27 | 1916950SM | 8 | NUT, Hex, 3/8-16 (Qty. of 2 included in Ref. No 59) |
| 28 | 1960355SM | 4 | NUT, Hex Locking, 1/2-13 (Included in Ref. No 59) |
| 29 | 1920415SM | 2 | CAPSCREW, Hex Head, 3/8-16 x 1-1/4, G5 |
| 30 | 1934654SM | 4 | CAPSCREW, Hex Head Whiz Lock, 3/8-16 x 1 (Included in Ref. No 59) |
| 31 | 1733948ASM | 1 | PLATE, Reinforcement, Upright (Included in Ref. No 59) |
| 32 | 1735055AYP | 1 | SUPPORT, Upright |
| 33 | 1704977ASM | 1 | BLADE, 22.30" |
| 34 | 1927557SM | 4 | NUT, Hex Flange Locking, 5/16-18 (Included in Ref. No 59) |
| 35 | 1703765ASM | 1 | BAFFLE, 38" |
| 36 | 1674669SM | 2 | SPACER, 3/8 ID x 5/8 OD x 1-5/32 (Included in Ref. No 59) |
| 37 | 1935048SM | 5 | NUT, Hex Flange Two Way Locking, 5/16-18 (Qty. of 4 included in Ref. No 59) |
| 38 | 1679163SM | 1 | WINGNUT ASSEMBLY (Included in Ref. No 59) |
| 39 | 1960273SM | 3 | BOLT, Carriage, 5/16-18 x 2-1/4, G5 (Included in Ref. No 59) |
| 40 | 1960371SM | 3 | CAPSCREW, Hex Head, 5/16-18 x 3/4 (Included in Ref. No 59) |
| 41 | 1704355ASM | 1 | BRACKET, Offset (Included in Ref. No 59) |
| 42 | 1733970ASM | 1 | BRACKET, Deflector Prop (Included in Ref. No 59) |

Footnotes

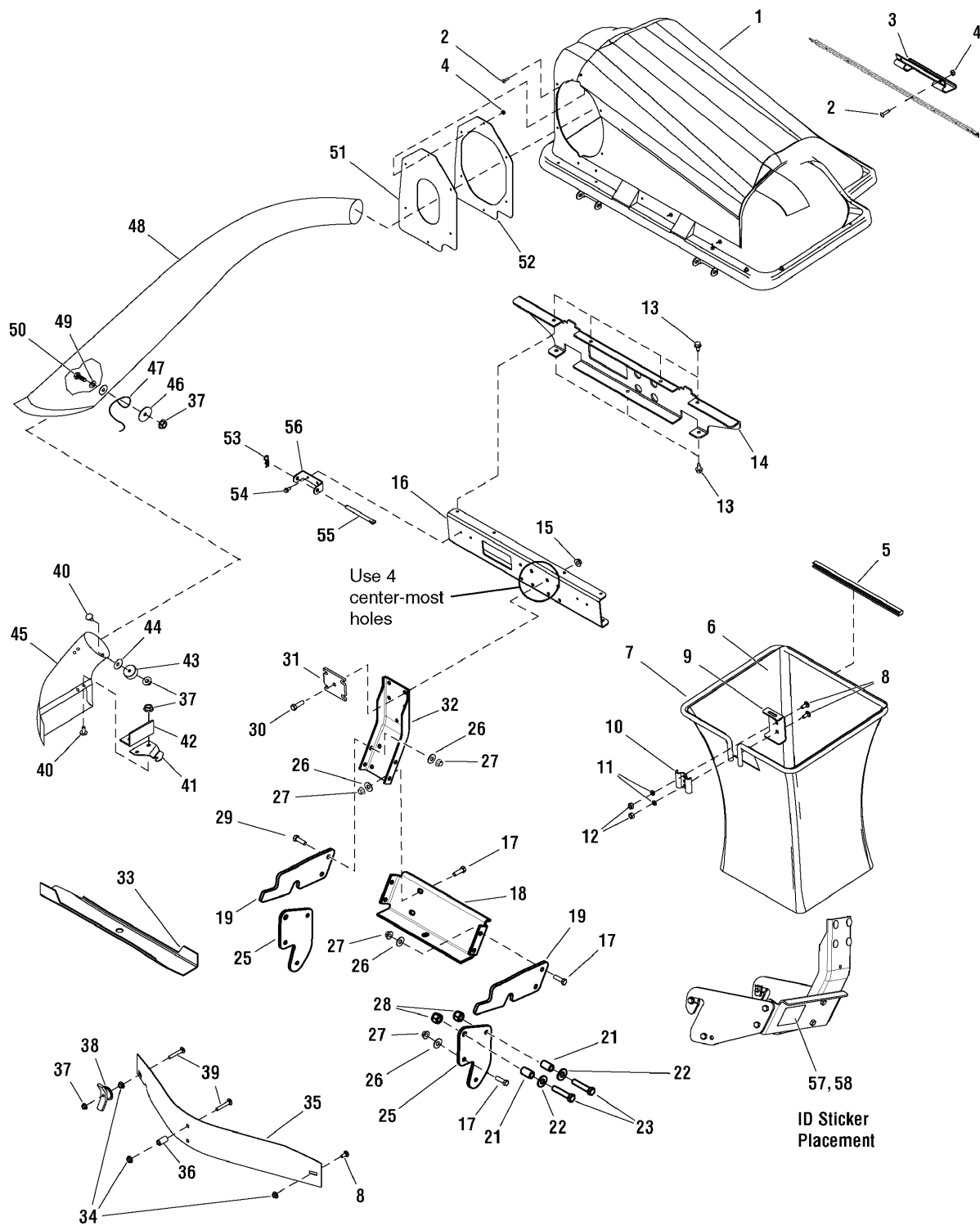
The above parts group applies to the following Mfg. Nos.:

1695353 - Catcher

Twin Catcher Assembly

NOTE: Unless noted otherwise, use the standard hardware torque specification chart.

1695353



The above parts group applies to the following Mfg. Nos.:
1695353 - Catcher

Twin Catcher Assembly

| REF NO | PART NO. | QTY. | DESCRIPTION |
|---------------|-----------------|-------------|--|
| 43 | 1704341SM | 1 | WASHER, 11/32 x 1-3/4 OD (Included in Ref. No 59) |
| 44 | 1920283SM | 1 | WASHER, 5/16 x 1-1/2 (Included in Ref. No 59) |
| 45 | 1735054SM | 1 | ADAPTER, 38" Mower |
| 46 | 1960185SM | 1 | WASHER, 5/16 x 2-1/8 |
| 47 | 1704603SM | 1 | LATCH, Tube |
| 48 | 1703769SM | 1 | TRANSFER TUBE |
| 49 | 1919326SM | 1 | WASHER, 5/16 x 3/4 OD |
| 50 | 1960122SM | 1 | CAPSCREW, Hex Head, 5/16-18 x 3/4 |
| 51 | 1733741SM | 1 | SEAL, Cover |
| 52 | 1732735ASM | 1 | FLANGE, Seal |
| 53 | 1960074 | 2 | CLIP, Hairpin, 5/8 Long (Included in Ref. No 59) |
| 54 | 1925003 | 4 | CAPSCREW, Hex Washer Head, Taptite, 1/4-20 x 1/2 |
| 55 | 054407ZMA | 2 | PIN, Cover Hinge (Included in Ref. No 59) |
| 56 | 1733504ASM | 2 | PIVOT, Hinge |
| 57 | ----- | 1 | ID LABEL/SERIAL PLATE (Not a Serviceable Part) |
| 58 | ----- | 1 | OVERLAY, Mylar (Not a Serviceable Part) |
| 59 | 1734745YP | 1 | HARDWARE BAG (Not Shown. Includes Ref. Nos. 8, 15, 17, 21, 22, 23, 26, 27, 28, 30, 31, 34, 36, 37, 38, 39, 40, 41, 42, 43, 44, 53, 55) |

Not for
Reproduction

Footnotes

The above parts group applies to the following Mfg. Nos.:

1695353 - Catcher

Not for
Reproduction

Not for
Reproduction

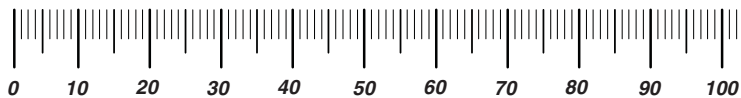
Not for
Reproduction

Hardware Identification & Torque Specifications

| Torque Specification Chart | | | | | | | | |
|--|-----------|------|-----------|------|------------|------|------------|------|
| FOR STANDARD METRIC MACHINE HARDWARE (Tolerance ± 20%) | | | | | | | | |
| Property Class | 5.6 | | 8.8 | | 10.9 | | 12.9 | |
| | Class 5.6 | | Class 8.8 | | Class 10.9 | | Class 12.9 | |
| Size Of Hardware | in/lbs | | in/lbs | | in/lbs | | in/lbs | |
| | ft/lbs | Nm. | ft/lbs | Nm. | ft/lbs | Nm. | ft/lbs | Nm. |
| M3 | 5.88 | .56 | 13.44 | 1.28 | 19.2 | 1.80 | 22.92 | 2.15 |
| M4 | 13.44 | 1.28 | 30.72 | 2.90 | 43.44 | 4.10 | 52.56 | 4.95 |
| M5 | 26.4 | 2.50 | 60.96 | 5.75 | 5.97 | 8.10 | 7.15 | 9.7 |
| M6 | 44.64 | 4.3 | 7.3 | 9.9 | 10.3 | 14 | 12.1 | 16.5 |
| M7 | 5.2 | 7.1 | 12.1 | 16.5 | 16.9 | 23 | 19.9 | 27 |
| M8 | 7.7 | 10.5 | 17.7 | 24 | 25 | 34 | 29 | 40 |
| M10 | 15 | 21 | 35 | 48 | 50 | 67 | 59 | 81 |
| M12 | 26 | 36 | 61 | 83 | 86.2 | 117 | 103 | 140 |
| M14 | 42 | 58 | 101 | 132 | 136 | 185 | 162 | 220 |
| M16 | 64 | 88 | 147 | 200 | 210 | 285 | 250 | 340 |
| M18 | 89 | 121 | 202 | 275 | 287 | 390 | 346 | 470 |
| M20 | 126 | 171 | 290 | 390 | 405 | 550 | 486 | 660 |
| M22 | 169 | 230 | 390 | 530 | 559 | 745 | 656 | 890 |
| M24 | 217 | 295 | 497 | 375 | 708 | 960 | 840 | 1140 |
| M27 | 320 | 435 | 733 | 995 | 1032 | 1400 | 1239 | 1680 |
| M30 | 435 | 590 | 995 | 1350 | 1401 | 1900 | 1681 | 2280 |
| M33 | 590 | 800 | 1349 | 1830 | 1902 | 2580 | 2278 | 3090 |
| M36 | 759 | 1030 | 1740 | 2360 | 2441 | 3310 | 2935 | 3980 |
| M39 | 988 | 1340 | 2249 | 3050 | 3163 | 4290 | 3798 | 5150 |

| Torque Specification Chart | | | | | | |
|---|-------------|-------|-------------|-------|-------------|---------|
| FOR STANDARD MACHINE HARDWARE (Tolerance ± 20%) | | | | | | |
| Hardware Grade | No Marks | | SAE Grade 5 | | SAE Grade 8 | |
| | SAE Grade 2 | | SAE Grade 5 | | SAE Grade 8 | |
| Size Of Hardware | in/lbs | | in/lbs | | in/lbs | |
| | ft/lbs | Nm. | ft/lbs | Nm. | ft/lbs | Nm. |
| 8-32 | 19 | 2.1 | 30 | 3.4 | 41 | 4.6 |
| 8-36 | 20 | 2.3 | 31 | 3.5 | 43 | 4.9 |
| 10-24 | 27 | 3.1 | 43 | 4.9 | 60 | 6.8 |
| 10-32 | 31 | 3.5 | 49 | 5.5 | 68 | 7.7 |
| 1/4-20 | 66 | 7.6 | 8 | 10.9 | 12 | 16.3 |
| 1/4-28 | 76 | 8.6 | 10 | 13.6 | 14 | 19.0 |
| 5/16-18 | 11 | 15.0 | 17 | 23.1 | 25 | 34.0 |
| 5/16-24 | 12 | 16.3 | 19 | 25.8 | 29 | 34.0 |
| 3/8-16 | 20 | 27.2 | 30 | 40.8 | 45 | 61.2 |
| 3/8-24 | 23 | 31.3 | 35 | 47.6 | 50 | 68.0 |
| 7/16-14 | 30 | 40.8 | 50 | 68.0 | 70 | 95.2 |
| 7/16-20 | 35 | 47.6 | 55 | 74.8 | 80 | 108.8 |
| 1/2-13 | 50 | 68.0 | 75 | 102.0 | 110 | 149.6 |
| 1/2-20 | 55 | 74.8 | 90 | 122.4 | 120 | 163.2 |
| 9/16-12 | 65 | 88.4 | 110 | 149.6 | 150 | 204.0 |
| 9/16-18 | 75 | 102.0 | 120 | 163.2 | 170 | 231.2 |
| 5/8-11 | 90 | 122.4 | 150 | 204.0 | 220 | 299.2 |
| 5/8-18 | 100 | 136 | 180 | 244.8 | 240 | 326.4 |
| 3/4-10 | 160 | 217.6 | 260 | 353.6 | 386 | 525.0 |
| 3/4-16 | 180 | 244.8 | 300 | 408.0 | 420 | 571.2 |
| 7/8-9 | 140 | 190.4 | 400 | 544.0 | 600 | 816.0 |
| 7/8-14 | 155 | 210.8 | 440 | 598.4 | 660 | 897.6 |
| 1-8 | 220 | 299.2 | 580 | 788.8 | 900 | 1,244.0 |
| 1-12 | 240 | 326.4 | 640 | 870.4 | 1,000 | 1,360.0 |

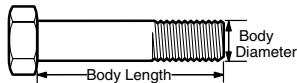
The guides and ruler furnished below are designed to help you select the appropriate hardware.



Nut, M8

Thread Diameter (mm)
Inside Diameter (in)
Threads per inch

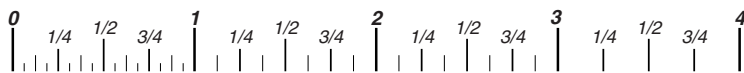
Nut, 1/2-16



Screw, M8- 1.25 x 25

Thread Diameter (mm)
Body Diameter
Distance between threads (mm)
Threads per inch
Body Length (mm)
Body Length (in)

Screw, 1/2- 16 x 2



Standard Hardware Sizing

When a washer or nut is identified as 1/2" (M8), this is the *Nominal size*, meaning the *inside diameter* is 1/2 inch (8mm metric thread diameter); if a second number is present it represents the *threads per inch* (distance between threads).

When bolt or capscrew is identified as 1/2 - 16 x 2" (M8 - 1.25 x 50), this means the *Nominal size*, or body diameter is 1/2 inch (8mm metric thread diameter), the second number, 16, represents the *threads per inch*, (1.25 thread diameter). The final number is the body length of the bolt or screw, 2 inches (50mm).

NOTES

- These torque values are to be used for all hardware excluding: locknuts, self-tapping screws, thread forming screws, sheet metal screws and socket head setscrews.
- Recommended seating torque values for locknuts:
 - for prevailing torque locknuts - use 65% of grade 5 torques.
 - for flange whizlock nuts and screws - use 135% of grade 5 torques.
- Unless otherwise noted on assembly drawings, all torque values must meet this specification.

Common Hardware Types

Hex Head Capscrew



Washer



Carriage Bolt



Hex Nut

Wrench & Fastener Size Guide

| | | | | |
|----------------------------------|----------------------------------|----------------------------------|--|---------------------------------|
| | | | | |
| 1/4" Bolt or Nut Wrench—7/16" | 5/16" Bolt or Nut Wrench—1/2" | 3/8" Bolt or Nut Wrench—9/16" | 7/16" Bolt or Nut Wrench (Bolt)—5/8" Wrench (Nut)—11/16" | 1/2" Bolt or Nut Wrench—3/4" |
| M6 Bolt or Nut Wrench—10mm | M8 Bolt or Nut Wrench—13mm | M10 Bolt or Nut Wrench—17mm | M12 Bolt or Nut Wrench—19mm | M14 Bolt or Nut Wrench—22mm |

Not for
Reproduction

**IT IS THE POLICY OF BRIGGS & STRATTON CORP TO IMPROVE ITS PRODUCTS
WHENEVER IT IS POSSIBLE AND PRACTICAL TO DO SO. WE RESERVE THE RIGHT TO
MAKE CHANGES OR ADD IMPROVEMENTS AT ANY TIME WITHOUT INCURRING ANY
OBLIGATION TO MAKE SUCH CHANGES ON PRODUCTS.**

Briggs & Stratton Yard Power Products Group

3515 N. 124 Street / PO Box 702
Wauwatosa, WI 53222 USA

www.simplicitymfg.com

© Copyright 2010 by Briggs & Stratton Corporation
Milwaukee, WI, USA. All rights reserved