

# Attachment Illustrated Parts List



## Attachment

**Mfg. No. Description**  
1695354 Catcher, Clean Sweep, Triple 44" & 50"

## **Simplicity**

MANUFACTURING, INC.  
500 N. Spring Street / PO Box 997  
Port Washington, WI 53074-0997 USA

[www.simplicitymfg.com](http://www.simplicitymfg.com)

© Copyright 2007 Simplicity Manufacturing, Inc. All Rights Reserved. Printed In USA.

**Part No.:** 1735616

**Rev.** 10/2007

TP 400-4787-00-AT-SMA

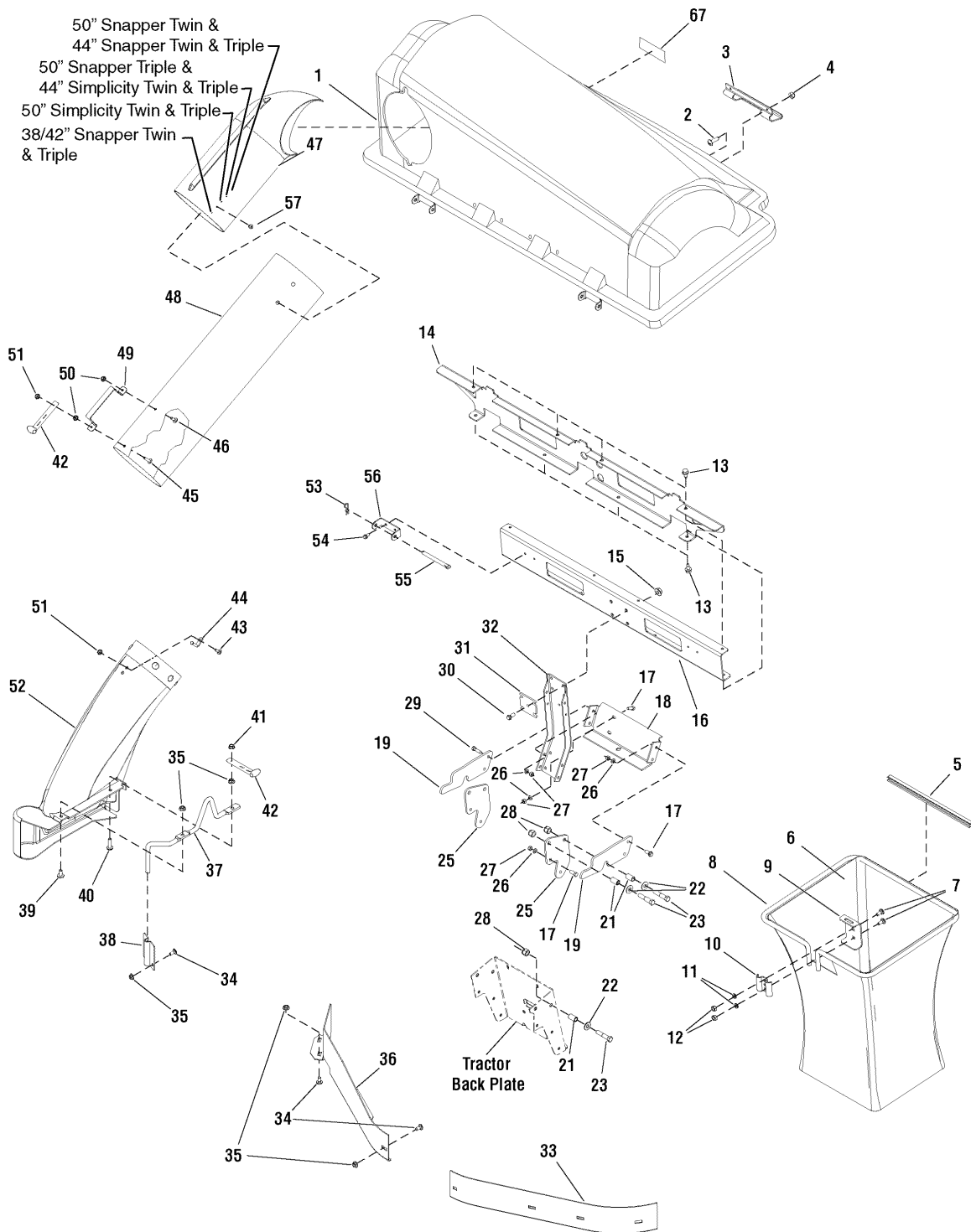


<b>PRODUCT COMPONENTS</b>	<b>PAGES</b>
Triple Catcher Assembler 44" & 50" .....	4
<b>Torque Specification Chart</b> .....	<b>Inside Back Cover</b>

# Triple Catcher Assembler 44" & 50"

**NOTE: Unless noted otherwise,  
use the standard hardware torque  
specification chart.**

1695354



**The above parts group applies to the following Mfg. Nos.:**

1695354 - Catcher

## Triple Catcher Assembler 44" & 50"

REF NO	PART NO.	QTY.	DESCRIPTION
1	1733546SM	1	COVER ASSEMBLY, Triple Catcher
2	1960404SM	6	SCREW, Truss Head Phillips, 10 - 24 x 3/4
3	054537MA	2	HANDLE, Plastic
4	1933896SM	6	NUT, Hex Lock, 10-24 w/Nylon Insert
5	1733709SM	3	CLIP, Tube Grass Bag
6	1733695SM	3	BAG, Triple Regular
7	1931333SM	6	BOLT, Carriage, 5/16 - 18 x 3/4, G5
8	1733517SM	3	HOOP, Triple
9	1703807ASM	3	HANGER, Grass Bag
10	1672023ASM	3	CLAMP, Grass Bag Plain
11	1917356SM	6	LOCKWASHER, Spring, 5/16
12	1917372SM	6	NUT, Hex, 5/16 - 18
13	1664847SM	8	SCREW, Hex Washer Head Taptite, 5/16 - 18 x 3/4
14	1733624ASM	1	BRACKET, Tab Cross Support Triple
15	1928352SM	4	NUT, Hex Whiz Lock Flange, 3/8 - 16 (Included in Ref. No. 68)
16	1733623ASM	1	CHANNEL, Cross Support Triple
17	1921210SM	2	CAPSCREW, Hex, 3/8 - 16
18	1703744ASM	1	BRACKET, LOWER (Included in Ref. No. 68)
19	1723067ASM	2	SUPPORT, SIDE HITCH
21	1668662SM	4	SPACER (Included in Ref. No. 68)
22	1924361SM	4	WASHER, Flat (Included in Ref. No. 68)
23	1960462SM	4	CAPSCREW, Hex Head, 1/2 - 13 x 2 1/2 (Included in Ref. No. 68)
25	1723044ASM	2	PLATE, SIDE GRASS CATCHER
26	1916965SM	2	LOCKWASHER, Spring, 3/8 (Included in Ref. No. 68)
27	1916950SM	2	NUT, Hex, 3/8-16 (Included in Ref. No. 68)
28	1960355SM	4	NUT, Hex, Lock 1/2-13 (Included in Ref. No. 68)
29	1920415SM	2	CAPSCREW, Hex Head, 3/8 - 16 x 1 1/4
30	1934654SM	4	CAPSCREW, Whiz, 3/8 - 16 x 1.00 (Included in Ref. No. 68)
31	1733948ASM	1	PLATE, Reinforcement, Upright (Included in Ref. No. 68)
32	1734223ASM	1	SUPPORT, UPRIGHT
33	1716870ASM	1	BAFFLE, Blowout L.H. 50" Mower Deck
33	1716879ASM	1	BAFFLE, Blowout L.H. 44" Mower Deck
34	1931332SM	9	BOLT, Carriage, 5/16 - 18 x 5/8 (Included in Ref. No. 68)
35	1927557SM	9	NUT, Hex Whiz Lock Flange, 5/16 - 18 (Included in Ref. No. 68)
36	1726364ASM	1	BAFFLE, Blowout R.H. 50" Mower Deck
36	1731990ASM	1	BAFFLE, Blowout R.H. 44" Mower Deck
37	1733946SM	1	ROD, Boot Mount, Deflector Prop, 44/50"
38	1726578ASM	1	PLATE, Chute Rod (Included in Ref. No. 68)
39	1960371SM	1	SCREW, Hex Head, 5/16 - 18 x 3/4
40	1930595SM	3	SCREW, Hex Whiz Lock Flange, 5/16 - 18 x 1-1/4 (Qty. of 2 included in Ref. No. 68)
41	1935048SM	1	NUT, Hex Flange Two-Way Lock, 5/16 - 18
42	2171600SM	2	STRAP, Hood
43	1960252SM	1	BOLT, Carriage, 1/4 - 20 x 5/8
44	054563MA	1	PIN, Latch

### Footnotes

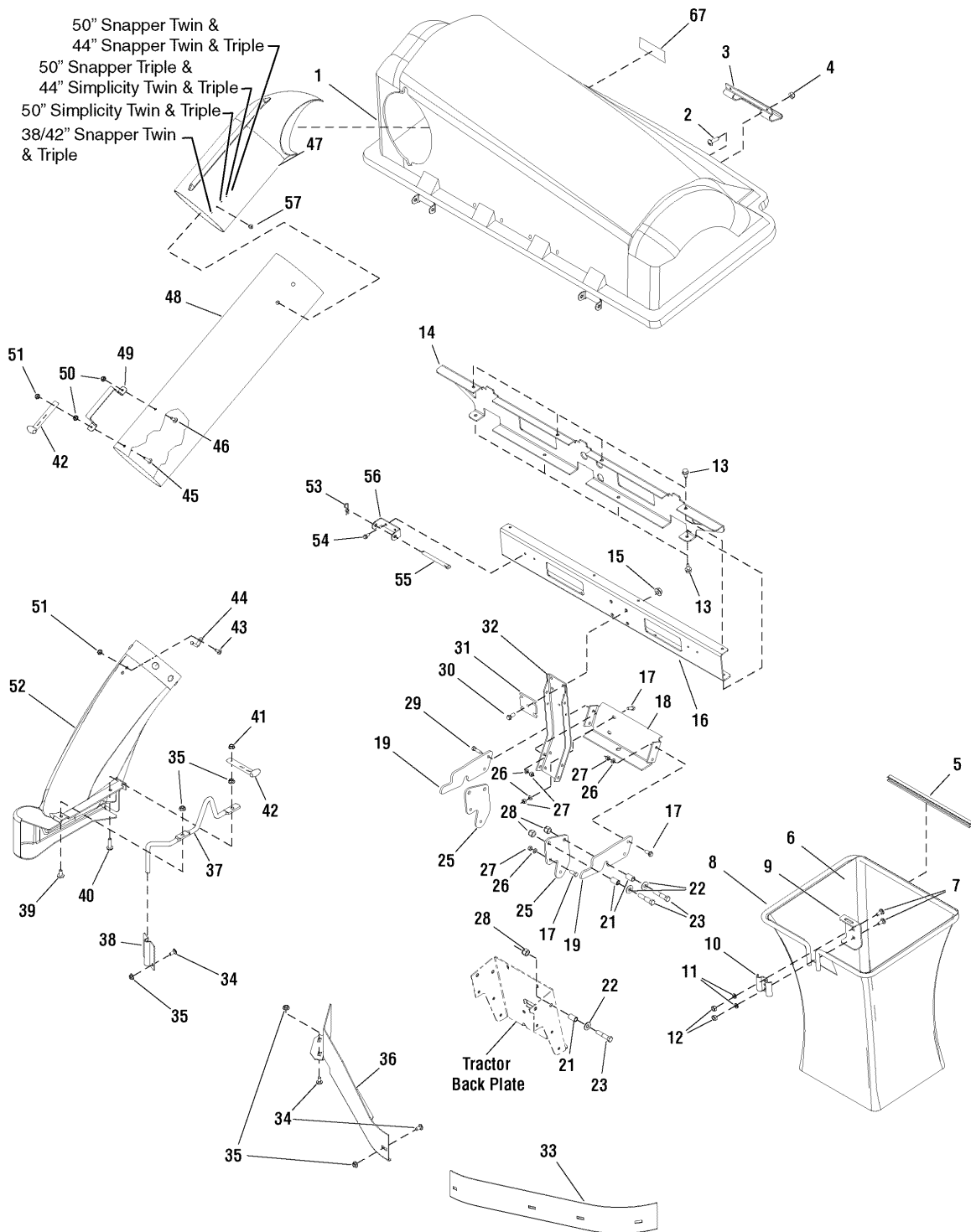
The above parts group applies to the following Mfg. Nos.:

1695354 - Catcher

# Triple Catcher Assembler 44" & 50"

**NOTE: Unless noted otherwise,  
use the standard hardware torque  
specification chart.**

1695354



**The above parts group applies to the following Mfg. Nos.:**  
1695354 - Catcher

## Triple Catcher Assembler 44" & 50"

REF NO	PART NO.	QTY.	DESCRIPTION
45	004x71MA	1	SCREW, 1/4 - 20 x 1
46	004x24MA	1	SCREW, 1/4 - 20 x 1/2
47	1733885SM	1	ELBOW, Upper Tube Poly
48	1732552SM	1	TUBE, Clear Poly
49	054416ZMA	1	HANDLE, Connect Tube
50	1928372SM	2	NUT, Hex Keps, 1/4 - 20
51	1930642SM	2	NUT, Hex Flange Top-Lock, 1/4 - 20
52	1734327SM	1	TUBE, Boot Poly
53	1960074SM	2	CLIP, Hair Pin (Included in Ref. No. 68)
54	1925003SM	4	SCREW, Hex Washer Head Taptite, 1/4 - 20 x 1/2
55	054407ZMA	2	PIN, Cover Hinge (Included in Ref. No. 68)
56	1733504ASM	2	PIVOT, Hinge
57	26x239MA	1	SCREW, 1/4 x 3/4 (Included in Ref. No. 68)
58	-----	1	STICKER, Serial w/Bar Code (Not Serviceable)
59	-----	1	MYLAR OVERLAY
67	1732819SM	1	DECAL, Warning Thrown Objects
68	1660954SM	1	HARDWARE BAG (Not Shown. Includes Ref. Nos. 15, 18, 21, 22, 23, 26, 27, 30, 31, 34, 35, 38, 40, 53, 55 & 57)

### Footnotes

---

The above parts group applies to the following Mfg. Nos.:

1695354 - Catcher



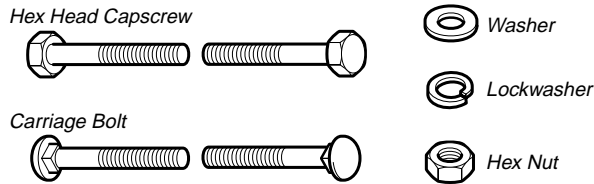






# Hardware Identification & Torque Specifications

## Common Hardware Types

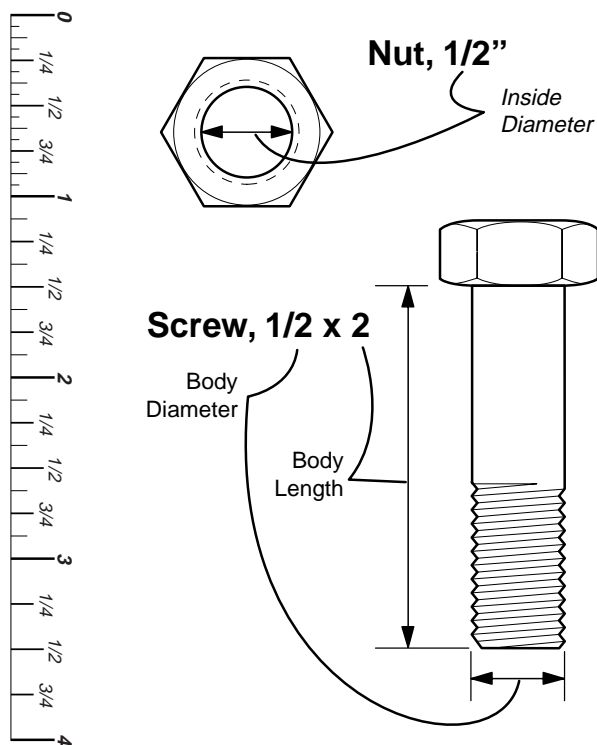


## Standard Hardware Sizing

When a washer or nut is identified as **1/2"**, this is the *Nominal size*, meaning the *inside diameter* is 1/2 inch; if a second number is present it represent the *threads per inch*

When bolt or capscrew is identified as **1/2 - 16 x 2"**, this means the *Nominal size*, or *body diameter* is 1/2 inch; the second number represents the *threads per inch* (16 in this example, and the final number is the *body length* of the bolt or screw (in this example 2 inches long).

**The guides and ruler furnished below are designed to help you select the appropriate hardware and tools.**



Torque Specification Chart						
FOR STANDARD MACHINE HARDWARE (Tolerance ± 20%)						
Hardware Grade	No Marks SAE Grade 2		SAE Grade 5		SAE Grade 8	
	in/lbs ft/lbs	Nm.	in/lbs ft/lbs	Nm.	in/lbs ft/lbs	Nm.
8-32	19	2.1	30	3.4	41	4.6
8-36	20	2.3	31	3.5	43	4.9
10-24	27	3.1	43	4.9	60	6.8
10-32	31	3.5	49	5.5	68	7.7
1/4-20	66	7.6	8	10.9	12	16.3
1/4-28	76	8.6	10	13.6	14	19.0
5/16-18	11	15.0	17	23.1	25	34.0
5/16-24	12	16.3	19	25.8	27	34.0
3/8-16	20	27.2	30	40.8	45	61.2
3/8-24	23	31.3	35	47.6	50	68.0
7/16-14	30	40.8	50	68.0	70	95.2
7/16-20	35	47.6	55	74.8	80	108.8
1/2-13	50	68.0	75	102.0	110	149.6
1/2-20	55	74.8	90	122.4	120	163.2
9/16-12	65	88.4	110	149.6	150	204.0
9/16-18	75	102.0	120	163.2	170	231.2
5/8-11	90	122.4	150	204.0	220	299.2
5/8-18	100	136	180	244.8	240	326.4
3/4-10	160	217.6	260	353.6	386	525.0
3/4-16	180	244.8	300	408.0	420	571.2
7/8-9	140	190.4	400	544.0	600	816.0
7/8-14	155	210.8	440	598.4	660	897.6
1-8	220	299.2	580	788.8	900	1,244.0
1-12	240	326.4	640	870.4	1,000	1,360.0

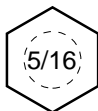
### NOTES

- These torque values are to be used for all hardware excluding: locknuts, self-tapping screws, thread forming screws, sheet metal screws and socket head setscrews.
- Recommended seating torque values for locknuts:
  - for prevailing torque locknuts - use 65% of grade 5 torques.
  - for flange whizlock nuts and screws - use 135% of grade 5 torques.
- Unless otherwise noted on assembly drawings, all torque values must meet this specification.

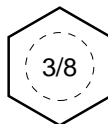
## Wrench & Fastener Size Guide



1/4" Bolt or Nut  
Wrench—7/16"



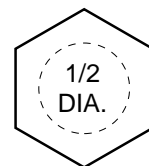
5/16" Bolt or Nut  
Wrench—1/2"



3/8" Bolt or Nut  
Wrench—9/16"



7/16" Bolt or Nut  
Wrench (Bolt)—5/8"  
Wrench (Nut)—11/16"



1/2" Bolt or Nut  
Wrench—3/4"

