

Attachment Illustrated Parts List



Attachment

Mfg. No.	Description
1695169	Catcher, Clean Sweep, Triple

Simplicity

MANUFACTURING, INC.
500 N. Spring Street / PO Box 997
Port Washington, WI 53074-0997 USA

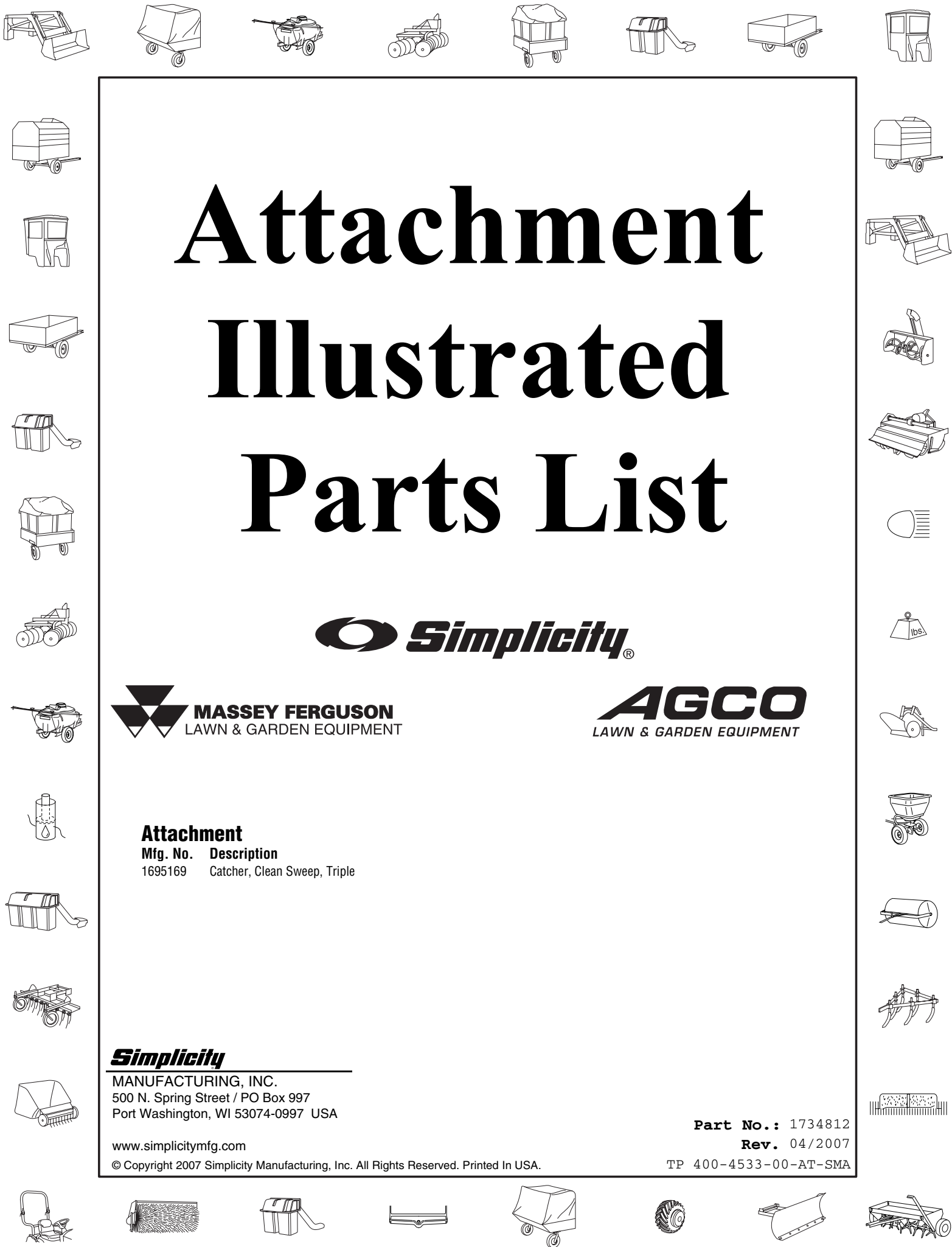
www.simplicitymfg.com

© Copyright 2007 Simplicity Manufacturing, Inc. All Rights Reserved. Printed In USA.

Part No.: 1734812

Rev. 04/2007

TP 400-4533-00-AT-SMA



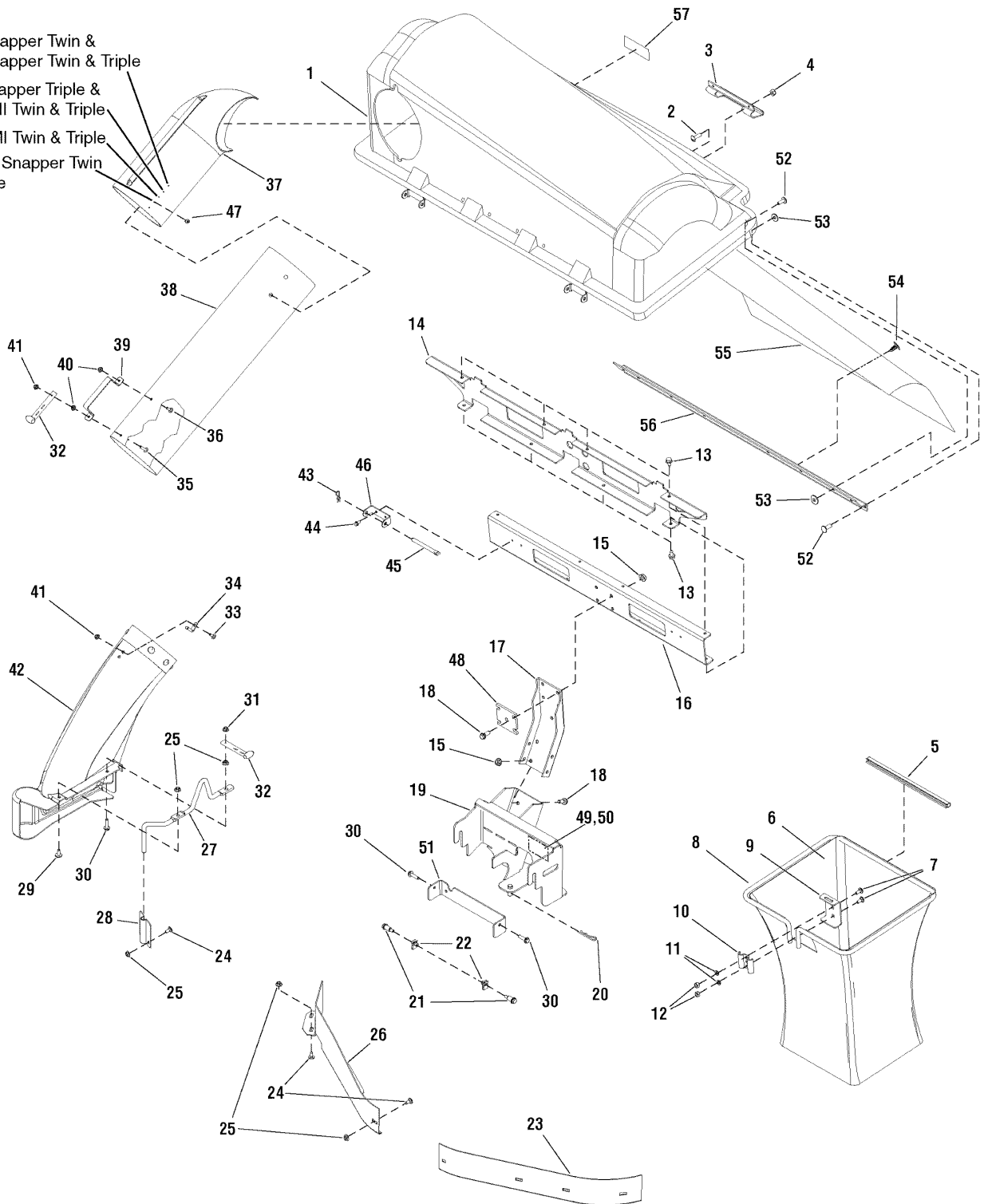
PRODUCT COMPONENTS	PAGES
Triple Catcher Assembler	4
Torque Specification Chart	Inside Back Cover

Triple Catcher Assembler

NOTE: Unless noted otherwise, use the standard hardware torque specification chart.

1695169

- 50" Snapper Twin & 44" Snapper Twin & Triple
- 50" Snapper Triple & 44" SMI Twin & Triple
- 50" SMI Twin & Triple
- 38/42" Snapper Twin & Triple



The above parts group applies to the following Mfg. Nos.:
1695169 - Catcher

Triple Catcher Assembler

REF NO	PART NO.	QTY.	DESCRIPTION
1	1733546SM	1	COVER ASSEMBLY, Triple Catcher
2	1960404SM	2	SCREW, Truss Head Phillips, 10 - 24 x 3/4
3	054537MA	1	HANDLE, Plastic
4	1933896SM	2	NUT, Hex Lock, 10-24 w/Nylon Insert
5	1733709SM	3	CLIP, Tube Grass Bag
6	1733695SM	3	BAG, Triple Regular
7	1931333SM	6	BOLT, Carriage, 5/16 - 18 x 3/4, G5
8	1733517SM	3	HOOP, Triple
9	1703807ASM	3	HANGER, Grass Bag
10	1672023ASM	3	CLAMP, Grass Bag Plain
11	1917356SM	6	LOCKWASHER, Spring, 5/16
12	1917372SM	6	NUT, Hex, 5/16 - 18
13	1664847SM	8	SCREW, Hex Washer Head Taptite, 5/16 - 18 x 3/4
14	1733624ASM	1	BRACKET, Tab Cross Support Triple
15	1928352SM	8	NUT, Hex Whiz Lock Flange, 3/8 - 16 (Included in Ref. No. 58)
16	1733623ASM	1	CHANNEL, Cross Support Triple
17	1707526ASM	1	SUPPORT, Upright
18	1934654SM	8	SCREW, Hex Whiz Lock Flange, 3/8 - 16 x 1 (Included in Ref. No. 58)
19	1733627SM	1	SUPPORT ASSEMBLY
20	1960033SM	1	CLIP, Hair Pin, 1/8 DIA (Included in Ref. No. 58)
21	1728976SM	2	BOLT, Shoulder, 5/16 - 18 (Included in Ref. No. 58)
22	1960717SM	2	NUT, Speed, 5/16 - 18 (Included in Ref. No. 58)
23	1716870ASM	1	BAFFLE, Blowout L.H. 50" Mower Deck
23	1716879ASM	1	BAFFLE, Blowout L.H. 44" Mower Deck
24	1931332SM	9	BOLT, Carriage, 5/16 - 18 x 5/8 (Included in Ref. No. 58)
25	1927557SM	11	NUT, Hex Whiz Lock Flange, 5/16 - 18 (Qty. of 9 included in Ref. No. 58)
26	1726364ASM	1	BAFFLE, Blowout R.H. 50" Mower Deck
26	1731990ASM	1	BAFFLE, Blowout R.H. 44" Mower Deck
27	1733946SM	1	ROD, Boot Mount, Deflector Prop, 44/50"
28	1726578ASM	1	PLATE, Chute Rod (Included in Ref. No. 58)
29	1960371SM	1	SCREW, Hex Head, 5/16 - 18 x 3/4
30	1930595SM	3	SCREW, Hex Whiz Lock Flange, 5/16 - 18 x 1-1/4 (Qty. of 2 included in Ref. No. 58)
31	1935048SM	1	NUT, Hex Flange Two-Way Lock, 5/16 - 18
32	2171600SM	2	STRAP, Hood
33	1960252SM	1	BOLT, Carriage, 1/4 - 20 x 5/8
34	054563MA	1	PIN, Latch
35	004x71MA	1	SCREW, 1/4 - 20 x 1
36	004x24MA	1	SCREW, 1/4 - 20 x 1/2
37	1733885SM	1	ELBOW, Upper Tube Poly
38	1732552SM	1	TUBE, Clear Poly
39	054416ZMA	1	HANDLE, Connect Tube
40	1928372SM	2	NUT, Hex Keps, 1/4 - 20
41	1930642SM	2	NUT, Hex Flange Top-Lock, 1/4 - 20
42	1731426SM	1	TUBE, Boot Poly

Footnotes

The above parts group applies to the following Mfg. Nos.:

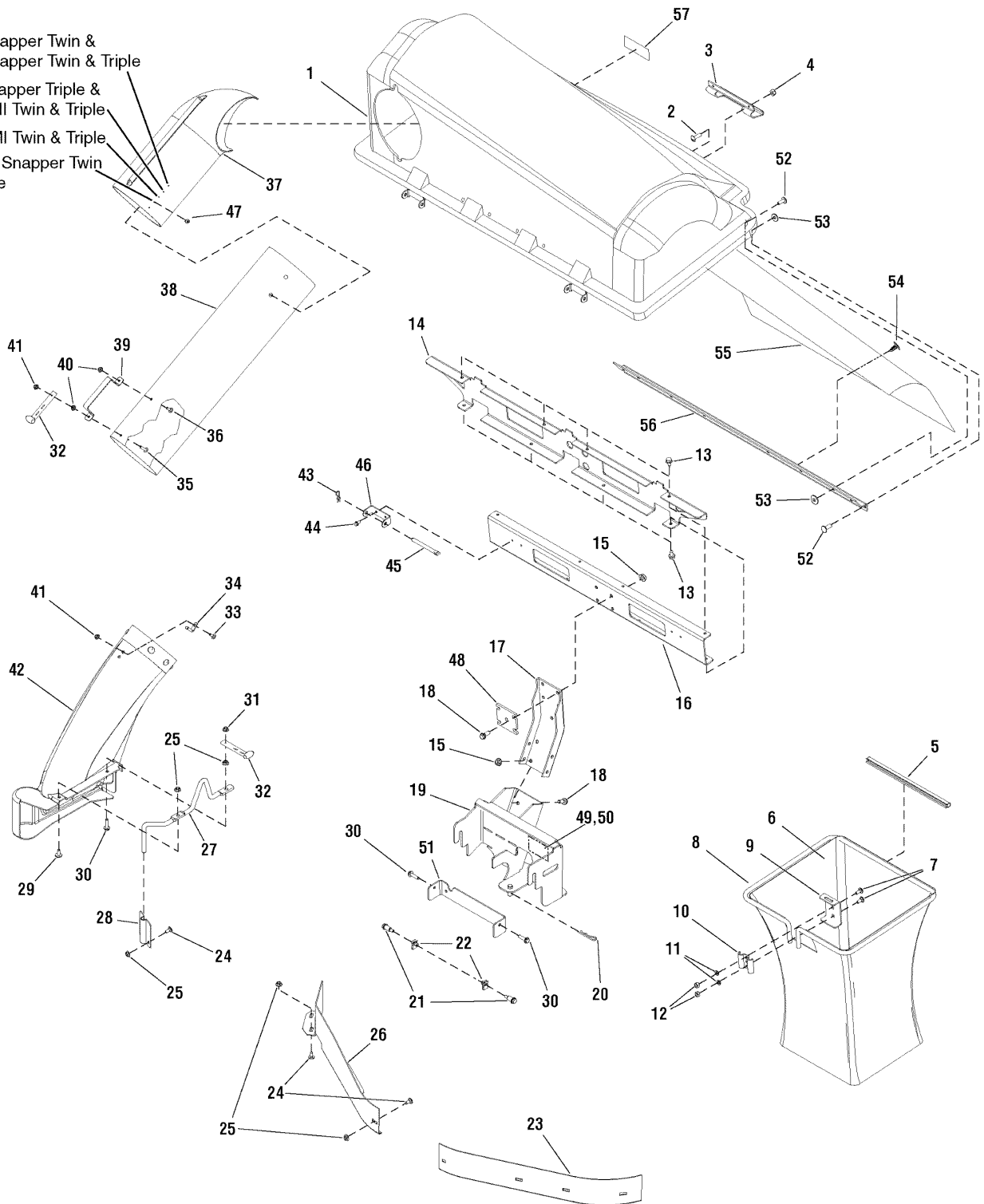
1695169 - Catcher

Triple Catcher Assembler

NOTE: Unless noted otherwise, use the standard hardware torque specification chart.

1695169

- 50" Snapper Twin & 44" Snapper Twin & Triple
- 50" Snapper Triple & 44" SMI Twin & Triple
- 50" SMI Twin & Triple
- 38/42" Snapper Twin & Triple



The above parts group applies to the following Mfg. Nos.:
1695169 - Catcher

Triple Catcher Assembler

REF NO	PART NO.	QTY.	DESCRIPTION
46	1733504ASM	2	PIVOT, Hinge
47	26x239MA	1	SCREW, 1/4 x 3/4 (Included in Ref. No. 58)
48	1733948ASM	1	PLATE, Reinforcement, Upright (Included in Ref. No. 58)
49	-----	1	STICKER, Serial w/Bar Code (Not Serviceable)
50	-----	1	MYLAR OVERLAY
51	1733903ASM	1	PLATE, Reinforcement Frame
52	1673320SM	18	RIVET, Pop
53	1910531SM	12	WASHER, Rivet
54	1732490SM	5	FASTENER, Panel
55	1732492SM	1	SCREEN, 19-3/4 x 38
56	1732493SM	1	SUPPORT, Screen
57	1732819SM	1	DECAL, Warning Thrown Objects
58	1660954SM	1	HARDWARE BAG (Not Shown. Includes Ref. Nos.15, 18, 20, 21, 22, 24, 25, 28, 30, 43, 45, 47 & 48)
--	1733866	1	INSTRUCTION MANUAL

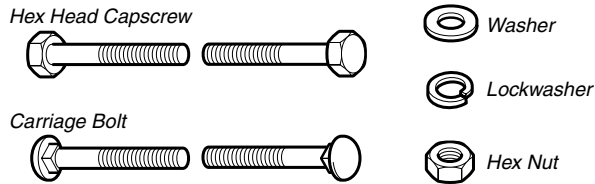
Footnotes

The above parts group applies to the following Mfg. Nos.:

1695169 - Catcher

Hardware Identification & Torque Specifications

Common Hardware Types

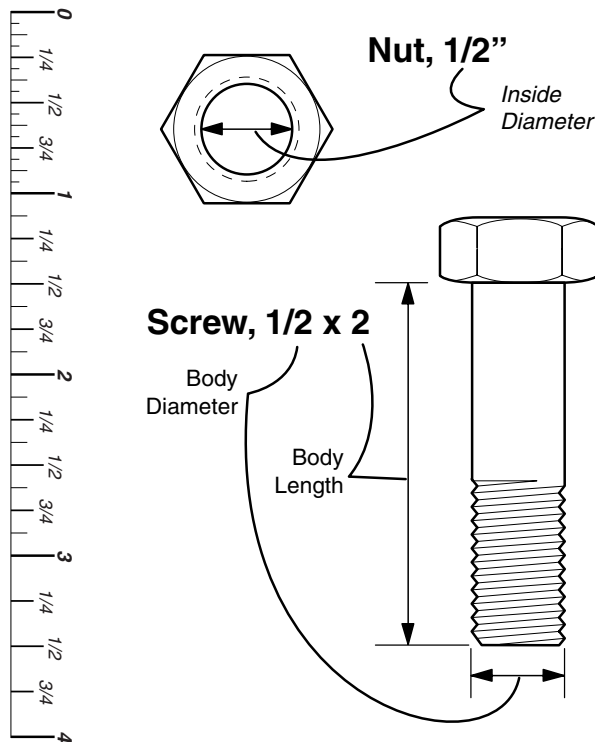


Standard Hardware Sizing

When a washer or nut is identified as **1/2"**, this is the *Nominal size*, meaning the *inside diameter* is 1/2 inch; if a second number is present it represents the *threads per inch*

When bolt or capscrew is identified as **1/2 - 16 x 2"**, this means the *Nominal size*, or *body diameter* is 1/2 inch; the second number represents the *threads per inch* (16 in this example, and the final number is the *body length* of the bolt or screw (in this example 2 inches long).

The guides and ruler furnished below are designed to help you select the appropriate hardware and tools.



Torque Specification Chart						
FOR STANDARD MACHINE HARDWARE (Tolerance ± 20%)						
Hardware Grade	No Marks SAE Grade 2		SAE Grade 5		SAE Grade 8	
	in/lbs ft/lbs	Nm.	in/lbs ft/lbs	Nm.	in/lbs ft/lbs	Nm.
8-32	19	2.1	30	3.4	41	4.6
8-36	20	2.3	31	3.5	43	4.9
10-24	27	3.1	43	4.9	60	6.8
10-32	31	3.5	49	5.5	68	7.7
1/4-20	66	7.6	8	10.9	12	16.3
1/4-28	76	8.6	10	13.6	14	19.0
5/16-18	11	15.0	17	23.1	25	34.0
5/16-24	12	16.3	19	25.8	27	34.0
3/8-16	20	27.2	30	40.8	45	61.2
3/8-24	23	31.3	35	47.6	50	68.0
7/16-14	30	40.8	50	68.0	70	95.2
7/16-20	35	47.6	55	74.8	80	108.8
1/2-13	50	68.0	75	102.0	110	149.6
1/2-20	55	74.8	90	122.4	120	163.2
9/16-12	65	88.4	110	149.6	150	204.0
9/16-18	75	102.0	120	163.2	170	231.2
5/8-11	90	122.4	150	204.0	220	299.2
5/8-18	100	136	180	244.8	240	326.4
3/4-10	160	217.6	260	353.6	386	525.0
3/4-16	180	244.8	300	408.0	420	571.2
7/8-9	140	190.4	400	544.0	600	816.0
7/8-14	155	210.8	440	598.4	660	897.6
1-8	220	299.2	580	788.8	900	1,244.0
1-12	240	326.4	640	870.4	1,000	1,360.0

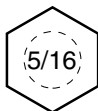
NOTES

- These torque values are to be used for all hardware excluding: locknuts, self-tapping screws, thread forming screws, sheet metal screws and socket head setscrews.
- Recommended seating torque values for locknuts:
 - for prevailing torque locknuts - use 65% of grade 5 torques.
 - for flange whizlock nuts and screws - use 135% of grade 5 torques.
- Unless otherwise noted on assembly drawings, all torque values must meet this specification.

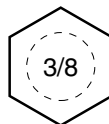
Wrench & Fastener Size Guide



1/4" Bolt or Nut
Wrench—7/16"



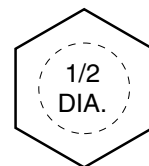
5/16" Bolt or Nut
Wrench—1/2"



3/8" Bolt or Nut
Wrench—9/16"



7/16" Bolt or Nut
Wrench (Bolt)—5/8"
Wrench (Nut)—11/16"



1/2" Bolt or Nut
Wrench—3/4"

