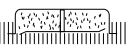
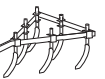
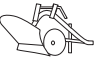
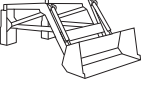


# Attachment Illustrated Parts List



## Attachments

Mfg. No.	Description
1695776	Catcher, Clean Sweep, Triple, 46" & 52"

### Briggs & Stratton Power Products Group, L.L.C.

P.O. Box 702  
Milwaukee, WI 53201-0702 USA

BRIGGSandSTRATTON.com

© Copyright 2013 by Briggs & Stratton Corporation  
Milwaukee, WI, USA. All rights reserved

Manual Part No. 1750806

Revision C

Rev. Date: 3/11/2013

Not for  
Reproduction

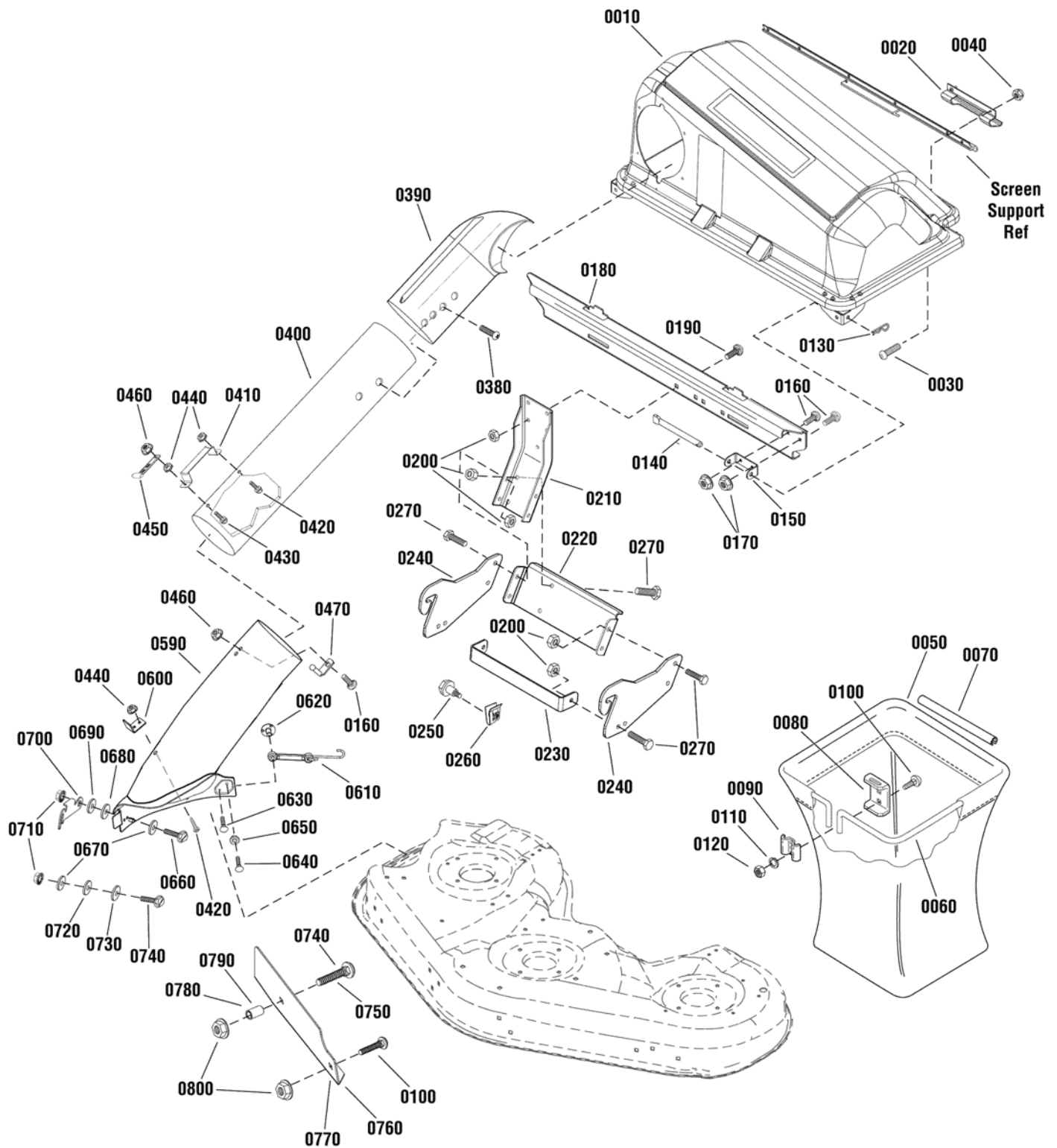
<b>PRODUCT COMPONENTS</b>	<b>PAGES</b>
Triple Catcher Assembly .....	4
<b>Torque Specification Chart</b> .....	<b>Inside Back Cover</b>

Not for  
Reproduction

# Triple Catcher Assembly

NOTE: Unless noted otherwise,  
use the standard hardware torque  
specification chart.

1695776



The above parts group applies to the following Mfg. Nos.:

1695776 - Catcher

## Triple Catcher Assembly

REF NO	PART NO.	QTY.	DESCRIPTION
0010	1736101	1	ASSEMBLY, Cover & Screen, Triple Catcher
0020	720537	2	HANDLE, Plastic
0030	1960404	4	SCREW, Truss Head Phillips, 10-24 x 3/4
0040	1933896	4	NUT, Hex Lock, 10-24 w/Nylon Insert
0050	1733695	3	BAG, Triple Regular
0060	1733517	3	HOOP, Triple
0070	1733709	3	EDGING, Tube Grass Bag
0080	1703807A	3	HANGER, Grass Bag
0090	1672023A	3	CLAMP, Grass Bag Plain
0100	1931333	7	BOLT, Carriage, 5/16-18 x 3/4, G5
0110	1917356	6	LOCKWASHER, Spring, 5/16
0120	1917372	6	NUT, Hex, 5/16-18
0130	1918196	2	PIN, Quick, 1-7/8
0140	720525	2	PIN, Cover Hinge
0150	1736886A	2	PIVOT, Hinge
0160	1960252	5	BOLT, Carriage, 1/4-20 x 5/8
0170	1960294	4	NUT, Whiz-Lock, Hex-Flange, 1/4-20
0180	1736080A	1	CROSS SUPPORT
0190	1931350	4	BOLT, Carriage, 3/8-16 X 1, G5
0200	1928352	12	NUT, Hex Whiz Lock Flange, 3/8-16
0210	1707526A	1	SUPPORT, Upright
0220	1736028A	1	BRACKET, Upright
0230	1736030A	1	BRACKET, Hitch
0240	1736029A	2	PLATE, Bagger Mount
0250	1728976	2	BOLT, Shoulder, 5/16-18
0260	1960717	2	NUT, Speed, 5/16-18
0270	1920415	8	CAPSCREW, Hex-Head, 3/8-16 X 1-1/4, G5
0380	722855	1	SCREW, 1/4 X 3/4
0390	1733885	1	ELBOW, Upper Tube Poly
0400	1734299	1	TUBE, Clear Poly
0410	720533	1	HANDLE, Connect Tube
0420	720074	1	SCREW, 1/4-20 x 1/2
0430	720076	1	SCREW, 1/4-20 x 1
0440	1928372	2	NUT, Hex Keps, 1/4-20
0450	2171600	2	STRAP, Hood
0460	1930642	2	NUT, Hex Flange Top-Lock, 1/4-20
0470	720543	1	PIN, Latch
0590	1734776	1	BOOT, Bagging
0600	1737764A	1	UPSTOP, Deflector
0610	7036433	1	STRAP, Mounting Bag
0620	7036404	1	NUT, Weld, 10-24
0630	7036415	1	SCREW, Pan Head, 10 x 5/8
0640	1931320	1	BOLT, Carriage, 1/4-20 X 3/4
0650	1960685	1	NUT, Hex, KEPS, Conical, 1/4-20

### Footnotes

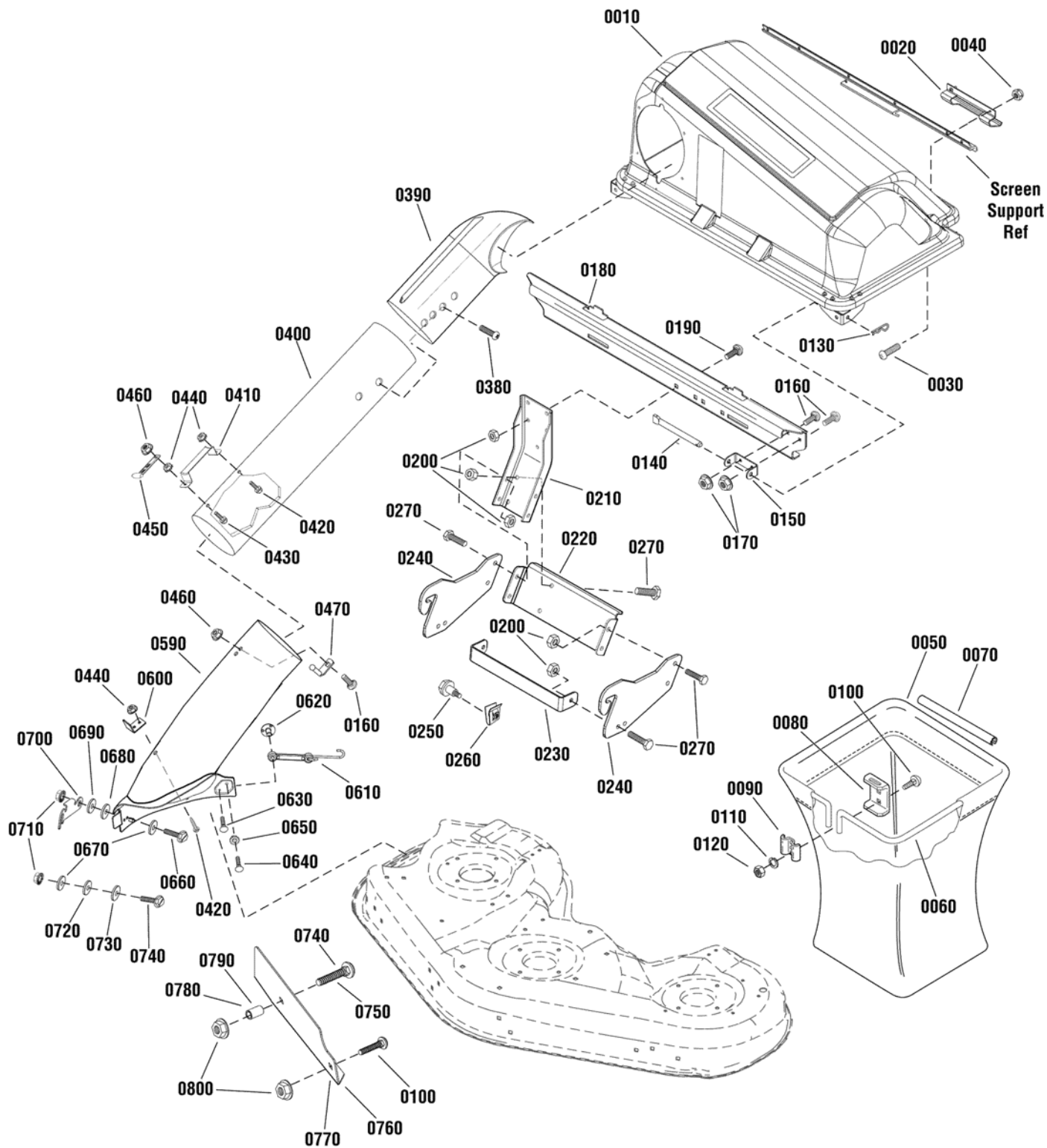
The above parts group applies to the following Mfg. Nos.:

1695776 - Catcher

# Triple Catcher Assembly

NOTE: Unless noted otherwise,  
use the standard hardware torque  
specification chart.

1695776



The above parts group applies to the following Mfg. Nos.:

1695776 - Catcher

## Triple Catcher Assembly

REF NO	PART NO.	QTY.	DESCRIPTION
0660	1921333	1	CAPSCREW, Hex-Head, 5/16-18 x 3/4
0670	1960044	2	WASHER, 5/16 x 3/4
0680	1708511	1	SPACER, 1" O.D.
0690	7026257	1	Washer, Wave
0700	1737765A	1	LATCH, Bagging Boot
0710	1960686	2	NUT, Hex Flange 5/16-18
0720	1723244	1	SPACER, Hydraulic Lift
0730	1719381	1	WASHER, 11/32 x 1
0740	1960223	2	BOLT, Round Head, Square Neck 5/16-18 x 1-1/4 (52" Decks Only )
0750	1931339	1	BOLT, Round Head, Square Neck 5/16-18 x 2 (46" Decks Only )
0760	1737241A	1	BAFFLE, 46" Mower Deck
0770	1737242A	1	BAFFLE, 52" Mower Deck
0780	1676088	1	SPACER, 5/8 x .320 (46" Decks Only )
0790	1674440	1	SPACER, 3/8 x 5/8 (52" Decks Only )
0800	1927557	2	NUT, Hex Whiz Lock Flange, 5/16-18

Not for  
Reproduction

### Footnotes

---

The above parts group applies to the following Mfg. Nos.:

1695776 - Catcher

Not for  
Reproduction



Not for  
Reproduction

Not for  
Reproduction

# Hardware Identification & Torque Specifications

Torque Specification Chart								
FOR STANDARD METRIC MACHINE HARDWARE (Tolerance ± 20%)								
Property Class	5.6		8.8		10.9		12.9	
	Class 5.6		Class 8.8		Class 10.9		Class 12.9	
Size Of Hardware	in/lbs		in/lbs		in/lbs		in/lbs	
	ft/lbs	Nm.	ft/lbs	Nm.	ft/lbs	Nm.	ft/lbs	Nm.
M3	5.88	.56	13.44	1.28	19.2	1.80	22.92	2.15
M4	13.44	1.28	30.72	2.90	43.44	4.10	52.56	4.95
M5	26.4	2.50	60.96	5.75	5.97	8.10	7.15	9.7
M6	44.64	4.3	7.3	9.9	10.3	14	12.1	16.5
M7	5.2	7.1	12.1	16.5	16.9	23	19.9	27
M8	7.7	10.5	17.7	24	25	34	29	40
M10	15	21	35	48	50	67	59	81
M12	26	36	61	83	86.2	117	103	140
M14	42	58	101	132	136	185	162	220
M16	64	88	147	200	210	285	250	340
M18	89	121	202	275	287	390	346	470
M20	126	171	290	390	405	550	486	660
M22	169	230	390	530	559	745	656	890
M24	217	295	497	375	708	960	840	1140
M27	320	435	733	995	1032	1400	1239	1680
M30	435	590	995	1350	1401	1900	1681	2280
M33	590	800	1349	1830	1902	2580	2278	3090
M36	759	1030	1740	2360	2441	3310	2935	3980
M39	988	1340	2249	3050	3163	4290	3798	5150

Torque Specification Chart						
FOR STANDARD MACHINE HARDWARE (Tolerance ± 20%)						
Hardware Grade	No Marks		SAE Grade 5		SAE Grade 8	
	SAE Grade 2		SAE Grade 5		SAE Grade 8	
Size Of Hardware	in/lbs		in/lbs		in/lbs	
	ft/lbs	Nm.	ft/lbs	Nm.	ft/lbs	Nm.
8-32	19	2.1	30	3.4	41	4.6
8-36	20	2.3	31	3.5	43	4.9
10-24	27	3.1	43	4.9	60	6.8
10-32	31	3.5	49	5.5	68	7.7
1/4-20	66	7.6	8	10.9	12	16.3
1/4-28	76	8.6	10	13.6	14	19.0
5/16-18	11	15.0	17	23.1	25	34.0
5/16-24	12	16.3	19	25.8	29	34.0
3/8-16	20	27.2	30	40.8	45	61.2
3/8-24	23	31.3	35	47.6	50	68.0
7/16-14	30	40.8	50	68.0	70	95.2
7/16-20	35	47.6	55	74.8	80	108.8
1/2-13	50	68.0	75	102.0	110	149.6
1/2-20	55	74.8	90	122.4	120	163.2
9/16-12	65	88.4	110	149.6	150	204.0
9/16-18	75	102.0	120	163.2	170	231.2
5/8-11	90	122.4	150	204.0	220	299.2
5/8-18	100	136	180	244.8	240	326.4
3/4-10	160	217.6	260	353.6	386	525.0
3/4-16	180	244.8	300	408.0	420	571.2
7/8-9	140	190.4	400	544.0	600	816.0
7/8-14	155	210.8	440	598.4	660	897.6
1-8	220	299.2	580	788.8	900	1,244.0
1-12	240	326.4	640	870.4	1,000	1,360.0

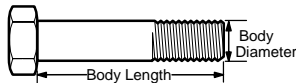
The guides and ruler furnished below are designed to help you select the appropriate hardware.



Nut, M8

Thread Diameter (mm)  
Inside Diameter (in)  
Threads per inch

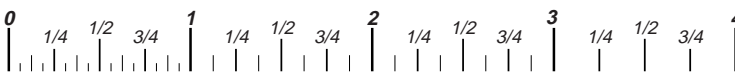
Nut, 1/2-16



Screw, M8- 1.25 x 25

Thread Diameter (mm)  
Body Diameter  
Distance between threads (mm)  
Threads per inch  
Body Length (mm)  
Body Length (in)

Screw, 1/2- 16 x 2



## Standard Hardware Sizing

When a washer or nut is identified as **1/2"** (M8), this is the *Nominal size*, meaning the *inside diameter* is 1/2 inch (8mm metric thread diameter); if a second number is present it represents the *threads per inch* (distance between threads).

When bolt or capscrew is identified as **1/2 - 16 x 2"** (M8 - 1.25 x 50), this means the *Nominal size*, or body diameter is 1/2 inch (8mm metric thread diameter), the second number, 16, represents the *threads per inch*, (*1.25 thread diameter*). The final number is the body length of the bolt or screw, 2 inches (50mm).

## NOTES

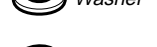
- These torque values are to be used for all hardware excluding: locknuts, self-tapping screws, thread forming screws, sheet metal screws and socket head setscrews.
- Recommended seating torque values for locknuts:
  - for prevailing torque locknuts - use 65% of grade 5 torques.
  - for flange whizlock nuts and screws - use 135% of grade 5 torques.
- Unless otherwise noted on assembly drawings, all torque values must meet this specification.

## Common Hardware Types

Hex Head Capscrew



Washer



Carriage Bolt



Lockwasher



Hex Nut



## Wrench & Fastener Size Guide

1/4" Bolt or Nut Wrench—7/16"	5/16" Bolt or Nut Wrench—1/2"	3/8" Bolt or Nut Wrench—9/16"	7/16" Bolt or Nut Wrench (Bolt)—5/8" Wrench (Nut)—11/16"	1/2" Bolt or Nut Wrench—3/4"
M6 Bolt or Nut Wrench—10mm	M8 Bolt or Nut Wrench—13mm	M10 Bolt or Nut Wrench—17mm	M12 Bolt or Nut Wrench—19mm	M14 Bolt or Nut Wrench—22mm

Not for  
Reproduction

**IT IS THE POLICY OF BRIGGS & STRATTON CORP TO IMPROVE ITS PRODUCTS  
WHENEVER IT IS POSSIBLE AND PRACTICAL TO DO SO. WE RESERVE THE RIGHT TO  
MAKE CHANGES OR ADD IMPROVEMENTS AT ANY TIME WITHOUT INCURRING ANY  
OBLIGATION TO MAKE SUCH CHANGES ON PRODUCTS.**

**Briggs & Stratton Power Products Group, L.L.C.**

P.O. Box 702  
Milwaukee, WI 53201-0702 USA

BRIGGSandSTRATTON.com	Murray.com
Snapper.com	AllisChalmersLawn.com
SimplicityMFG.com	AGCOLawn.com
MasseyLawn.com	