

Parts Manual

Mfg. No: 1695642
Turbo, 46" & 52" Mower Deck

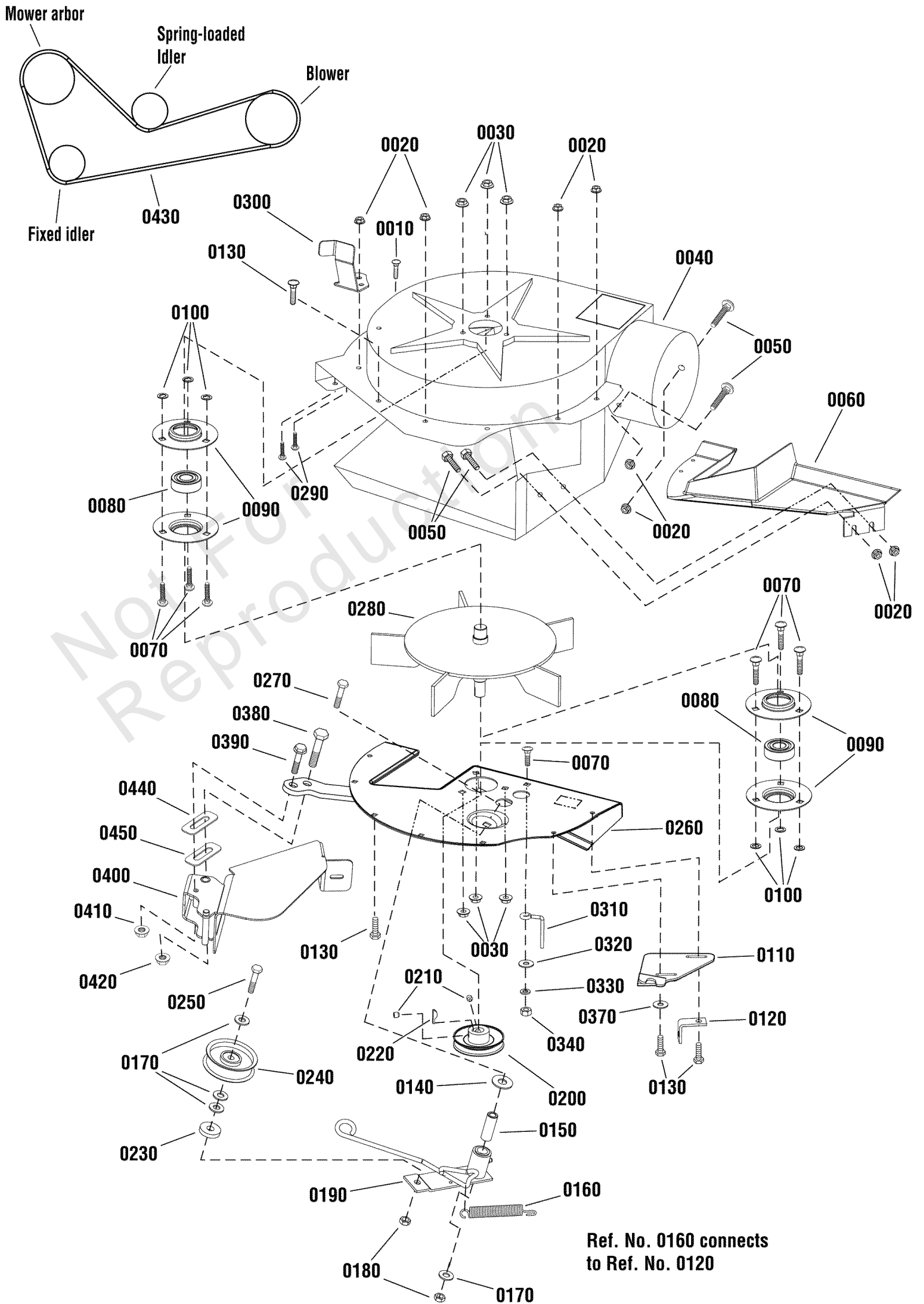
Model Components	Page
Turbo, Blower (988391).....	4
Turbo, Blower (988392).....	6
Torque Specification Chart.....	8

Not For
Reproduction

Turbo, Blower (988391)

Note: Unless noted otherwise, use the standard torque specifications

Mfg. No: 1695642



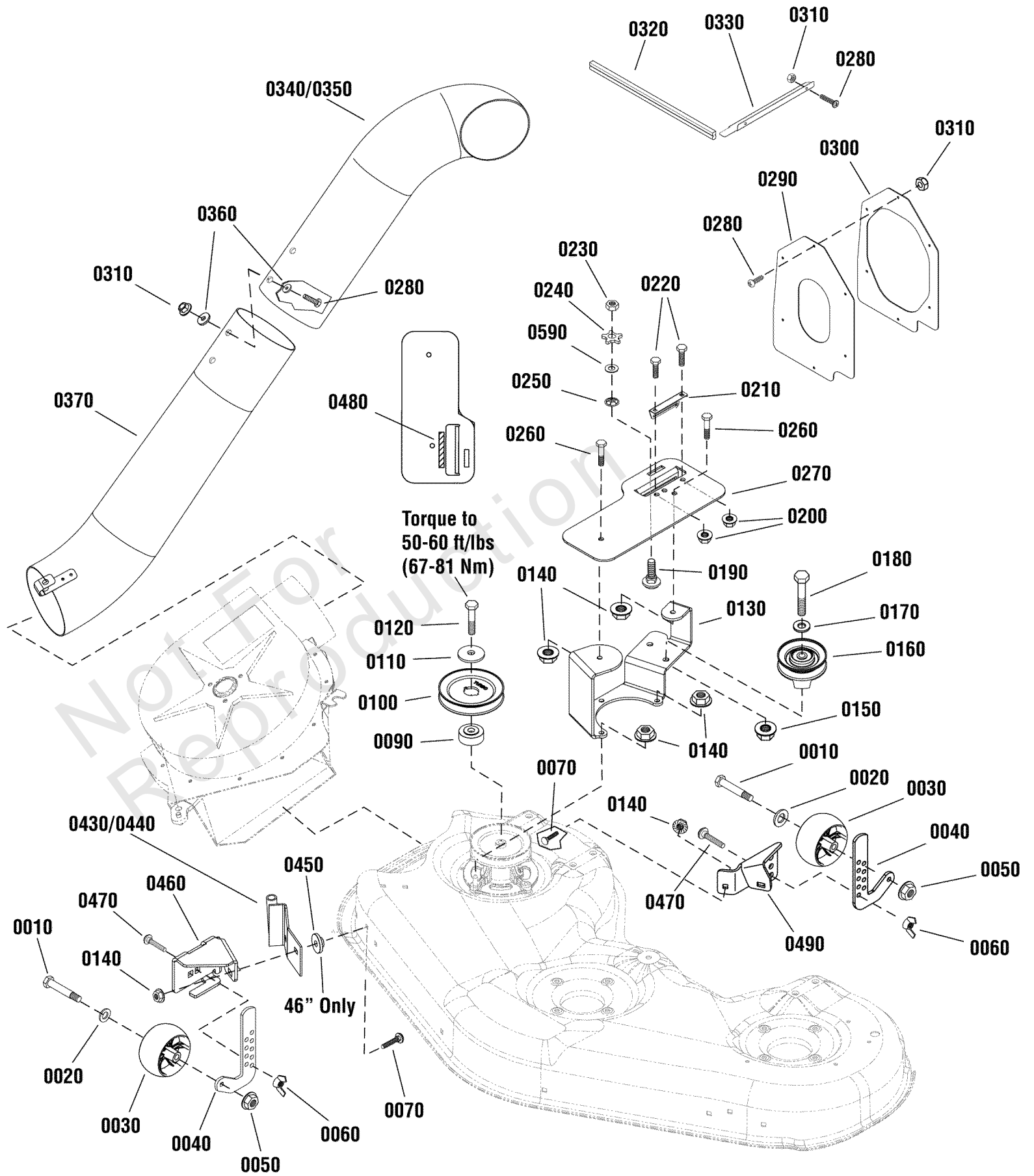
Turbo, Blower (988391)

REF NO	PART NO	QTY	DESCRIPTION
0010	1925003	1	SCREW-HEX WSHR HD TAPTT 1/4-20X0.500 BLK
0020	1930641	10	NUT, Hex Flange, Whiz Lock Large, 1/4-20
0030	1927557	6	NUT, Hex Whiz Lock Flange, 5/16-18, Large, Black
0040	1724441A	1	HOUSING FAN ASSEMBLY
0050	1931317	4	BOLT, 1/4-20 x 2" Round Head Short Square Neck, GR5, Black
0060	1705267	1	PLATE-COVER, BLACK POLY FOR LTH MDVS
0070	1931333	7	BOLT, Carriage, 5/16-18 x 3/4
0080	2108202	2	BEARING-BALL 0.750ID 1.780OD 0.610LG
0090	1665982A	4	RETAINER, Bearing
0100	1933988	6	NUT, Push, 5/16
0110	1738000A	1	LATCH, Turbo
0120	1668500	1	ANCHOR, Spring
0130	1924009	6	CAPSCREW, Hex Head, 1/4 - 20 x 7/8
0140	1924361	1	WASHER, Plain, 17/32 x 1-1/4 x 5/64
0150	1676833	1	SPACER, 3/8 ID x 5/8 OD x 1-3/4 Long
0160	1716853	1	SPRING, Tension
0170	1924940	4	Flatwasher, 3/8
0180	1960251	2	NUT, Hex Center Lock Jam, 3/8 - 16
0190	1706284A	1	LEVER ASSEMBLY, Turbo
0200	1736092	1	PULLEY, 2-3/4" Diam., For 4L Belt
0210	1960619	2	SETSCREW, Hex, Socket Head, 5/16-18 x 5/16
0220	2860403	1	KEY, Woodruff, Modified
0230	1933263	1	WASHER, Flat, 7/16 x 1-1/4 OD
0240	2154534	1	IDLER PULLEY ASSEMBLY, 2-3/4 OD
0250	720192	1	CAPSCREW, Hex Head, 3/8-16X1-1/2
0260	1738101A	1	PLATE ASSEMBLY
0270	1931355	1	BOLT, Carriage, 3/8-16 x 2-1/4
0280	1706631A	1	FAN ASSEMBLY, Five Paddle
0290	1960728	2	CAPSCREW, Washer Head, Plastite, 1/4-18 x 5/8
0300	1738166A	1	BRACKET, Deflector, Prop, Turbo
0310	1678435	1	BELT STOP, (Height Indicator)
0320	1924874	1	WASHER, 5/16 Flat (.341 I.D. x .87 O.D. X .06 Thick) Black
0330	1917356	1	Lockwasher, 5/16
0340	1917372	1	NUT, Hex, 5/16-18
0370	1919381	1	WASHER-0.312(0.34IDX1.00ODX.13THK)BLK
0380	23316	1	CAPSCREW, Hex Head, 1/2 -13 x 4
0390	2860709	1	CAPSCREW, Hex Flange, Whiz Lock, 3/8-16 x 1-3/4
0400	1737994A	1	CHUTE ASSEMBLY, Turbo
0410	7091619	1	NUT, 3/8-16 Hex Flange lock, YZ
0420	1960379	1	NUT, Hex Lock, ESNA Light, 1/2-13
0430	1736554	1	V-BELT, Cog, 39.62
0440	1751304A	1	SHIM, Thick
0450	1751305A	1	SHIM, Thin

Turbo, Blower (988392)

Note: Unless noted otherwise, use the standard torque specifications

Mfg. No: 1695642



Turbo, Blower (988392)

REF NO	PART NO	QTY	DESCRIPTION
0010	1736539	2	SHOULDER BOLT, 3/8-16 x 3.41" .750 Thread Yellow
0020	1960170	2	Flatwasher, 1/2
0030	1736896	2	GAUGE WHEEL, Black Poly 5" Dia.
0040	1739472A	2	BRACKET, Wheel Adjustable
0050	1960687	2	NUT, Hex Lock Flange, 5/16 - 18 ESNA
0060	7091049	2	WINGNUT, 3/8-16 w/Nylon Ring
0070	1960223	4	BOLT, 5/16-18 x 1-1/4" Round Head Short Square Neck GR5, Black
0090	1738102	1	SPACER, Pulley
0100	1713090	1	PULLEY, 3 x 3/4 OD
0110	1656916	1	WASHER, .475 ID x 1.75 OD x .156 Thick Spring, Black
0120	1921212	1	CAPSCREW, Hex-Head, 7/16-14 x 1-1/2
0130	1737989A	1	BRACKET, Belt Cover
0140	1931277	8	NUT, Hex Flange Whiz Lock, 5/16-18 all Black
0150	1931211	1	NUT, Hex Flange Whiz Lock, 3/8-16, Small
0160	1721134	1	PULLEY, 3" OD x .378" ID x .75" WD, w/Bearing
0170	1924940	1	Flatwasher, 3/8
0180	7091305	1	SCREW, 3/8-16 x 2" Hex Head Cap, GR 5
0190	1931338	1	BOLT, 5/16-18 x 1-3/4" Round Head Short Square Neck, GR 5
0200	725891	2	NUT, Hex Flange, 1/4 - 20
0210	1739486A	1	BRACKET, Height of Cut
0220	7090005	2	BOLT, 1/4-20 x 1/2" Short Neck Carriage GR 5
0230	7091298	1	NUT, 5/16-18 Hex Lock, ESNA, YZ
0240	1733098	1	KNOB, Plastic, 5/16-18
0250	720376	1	NUT, Push, For 1/4 Stud
0260	7090316	1	BOLT, Carriage, Short Neck, 5/16c x 3/4
0270	1738143A	1	COVER, Belt
0280	1960404	9	SCREW, Truss Head Phillips, #10-24 x 3/4 Black
0290	1733741	1	SEAL, Cover, Nylon
0300	1732735A	1	FLANGE, Seal 14 GA
0310	1933896	9	NUT, Hex Lock, 10-24 with Nylon Insert NC3B Black
0320	1733579	1	EDGING, Rubber, thick
0330	1733580A	1	PLATE, Deflector
0340	1738160	1	TUBE, Upper, Turbo"
0350	1732800	1	TUBE, Upper, Turbo"
0360	1910531	1	WASHER
0370	1719719	1	ASSEMBLY, Tube & Clip, Lower
0430	1737997A	1	ASSEMBLY, Mount, Turbo Blower
0440	1739438A	1	ASSEMBLY, Mount, Turbo Blower
0450	1723244	2	SPACER, HYDRAULIC LIFT PIVOT -46" Decks only
0460	1739471A	1	BRACKET, Gauge Wheel
0470	1931350	2	BOLT, RD HD SH SQ NK 3/8- 16X1.000 G5 BL
0480	1737541	1	DECAL, Height of Cut
0490	1739787A	1	BRACKET, Gauge Wheel
0590	1919381	1	WASHER-0.312(0.34IDX1.00ODX.13THK)BLK

Hardware Identification & Torque Specifications

Torque Specification Chart								
FOR STANDARD METRIC MACHINE HARDWARE (Tolerance ± 20%)								
Property Class	5.6		8.8		10.9		12.9	
	Class 5.6		Class 8.8		Class 10.9		Class 12.9	
Size Of Hardware	in/lbs	Nm.	in/lbs	Nm.	in/lbs	Nm.	in/lbs	Nm.
	ft/lbs		ft/lbs		ft/lbs		ft/lbs	
M3	5.88	.56	13.44	1.28	19.2	1.80	22.92	2.15
M4	13.44	1.28	30.72	2.90	43.44	4.10	52.56	4.95
M5	26.4	2.50	60.96	5.75	5.97	8.10	7.15	9.7
M6	44.64	4.3	7.3	9.9	10.3	14	12.1	16.5
M7	5.2	7.1	12.1	16.5	16.9	23	19.9	27
M8	7.7	10.5	17.7	24	25	34	29	40
M10	15	21	35	48	50	67	59	81
M12	26	36	61	83	86.2	117	103	140
M14	42	58	101	132	136	185	162	220
M16	64	88	147	200	210	285	250	340
M18	89	121	202	275	287	390	346	470
M20	126	171	290	390	405	550	486	660
M22	169	230	390	530	559	745	656	890
M24	217	295	497	375	708	960	840	1140
M27	320	435	733	995	1032	1400	1239	1680
M30	435	590	995	1350	1401	1900	1681	2280
M33	590	800	1349	1830	1902	2580	2278	3090
M36	759	1030	1740	2360	2441	3310	2935	3980
M39	988	1340	2249	3050	3163	4290	3798	5150

Torque Specification Chart						
FOR STANDARD MACHINE HARDWARE (Tolerance ± 20%)						
Hardware Grade	No Marks		SAE Grade 5		SAE Grade 8	
	SAE Grade 2		SAE Grade 5		SAE Grade 8	
Size Of Hardware	in/lbs	Nm.	in/lbs	Nm.	in/lbs	Nm.
	ft/lbs		ft/lbs		ft/lbs	
8-32	19	2.1	30	3.4	41	4.6
8-36	20	2.3	31	3.5	43	4.9
10-24	27	3.1	43	4.9	60	6.8
10-32	31	3.5	49	5.5	68	7.7
1/4-20	66	7.6	8	10.9	12	16.3
1/4-28	76	8.6	10	13.6	14	19.0
5/16-18	11	15.0	17	23.1	25	34.0
5/16-24	12	16.3	19	25.8	29	34.0
3/8-16	20	27.2	30	40.8	45	61.2
3/8-24	23	31.3	35	47.6	50	68.0
7/16-14	30	40.8	50	68.0	70	95.2
7/16-20	35	47.6	55	74.8	80	108.8
1/2-13	50	68.0	75	102.0	110	149.6
1/2-20	55	74.8	90	122.4	120	163.2
9/16-12	65	88.4	110	149.6	150	204.0
9/16-18	75	102.0	120	163.2	170	231.2
5/8-11	90	122.4	150	204.0	220	299.2
5/8-18	100	136	180	244.8	240	326.4
3/4-10	160	217.6	260	353.6	386	525.0
3/4-16	180	244.8	300	408.0	420	571.2
7/8-9	140	190.4	400	544.0	600	816.0
7/8-14	155	210.8	440	598.4	660	897.6
1-8	220	299.2	580	788.8	900	1,244.0
1-12	240	326.4	640	870.4	1,000	1,360.0

The guides and ruler furnished below are designed to help you select the appropriate hardware.



Nut, M8

Thread Diameter (mm)

Inside Diameter (in) Threads per inch

Nut, 1/2-16



Screw, M8- 1.25 x 25

Thread Diameter (mm) Distance between threads (mm) Body Length (mm)

Body Diameter Threads per inch Body Length (in)

Screw, 1/2- 16 x 2



Standard Hardware Sizing

When a washer or nut is identified as 1/2" (M8), this is the *Nominal size*, meaning the *inside diameter* is 1/2 inch (8mm metric thread diameter); if a second number is present it represents the *threads per inch* (distance between threads).

When bolt or capscrew is identified as 1/2 - 16 x 2" (M8 - 1.25 x 50), this means the *Nominal size*, or body diameter is 1/2 inch (8mm metric thread diameter), the second number, 16, represents the *threads per inch*, (*distance between threads*). The final number is the body length of the bolt or screw, 2 inches (50mm).

NOTES

- These torque values are to be used for all hardware excluding: locknuts, self-tapping screws, thread forming screws, sheet metal screws and socket head setscrews.
- Recommended seating torque values for locknuts:
 - for prevailing torque locknuts - use 65% of grade 5 torques.
 - for flange whizlock nuts and screws - use 135% of grade 5 torques.
- Unless otherwise noted on assembly drawings, all torque values must meet this specification.

Common Hardware Types

Hex Head Capscrew



Washer



Carriage Bolt



Hex Nut

Wrench & Fastener Size Guide

1/4" Bolt or Nut Wrench—7/16"	5/16" Bolt or Nut Wrench—1/2"	3/8" Bolt or Nut Wrench—9/16"	7/16" Bolt or Nut Wrench (Bolt)—5/8" Wrench (Nut)—11/16"	1/2" Bolt or Nut Wrench—3/4"
M6 Bolt or Nut Wrench—10mm	M8 Bolt or Nut Wrench—13mm	M10 Bolt or Nut Wrench—17mm	M12 Bolt or Nut Wrench—19mm	M14 Bolt or Nut Wrench—22mm

