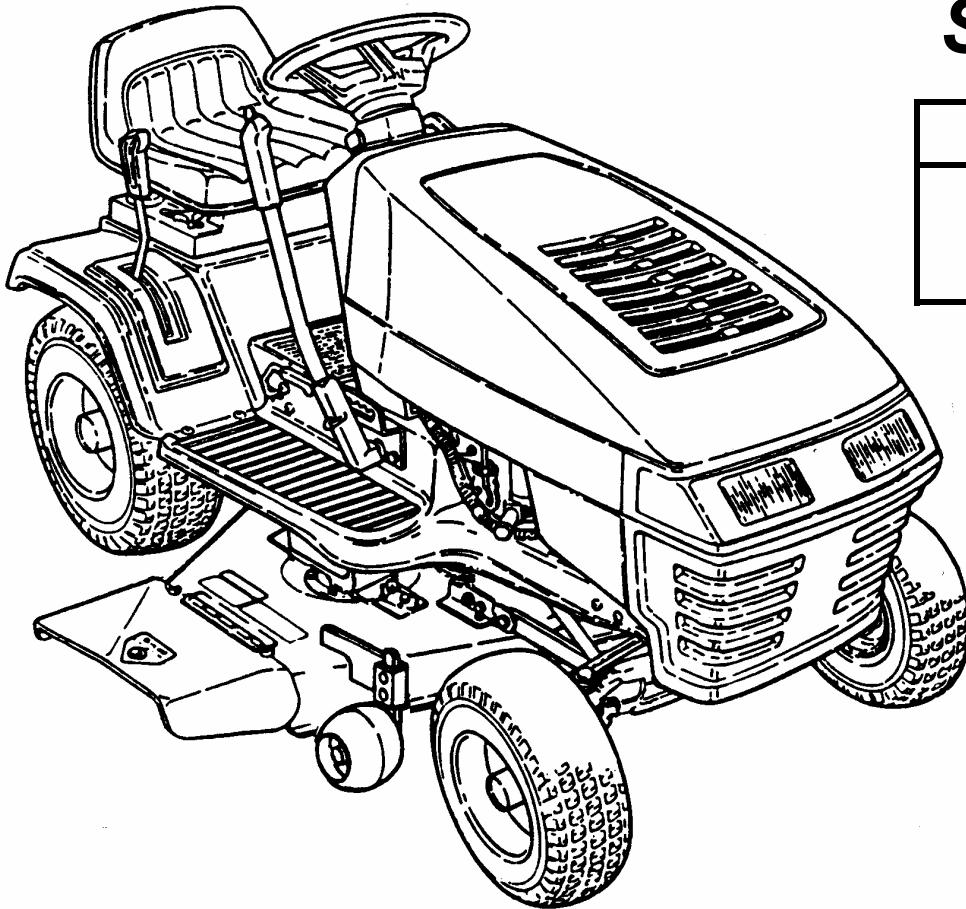


Parts Manual for
SNAPPER[®]

**LAWN TRACTORS
ELECTRIC CLUTCH
HYDRO DRIVE
SERIES F**



MODELS

LT160H42FBV
LT160H42FBV2
LT180H48FBV2

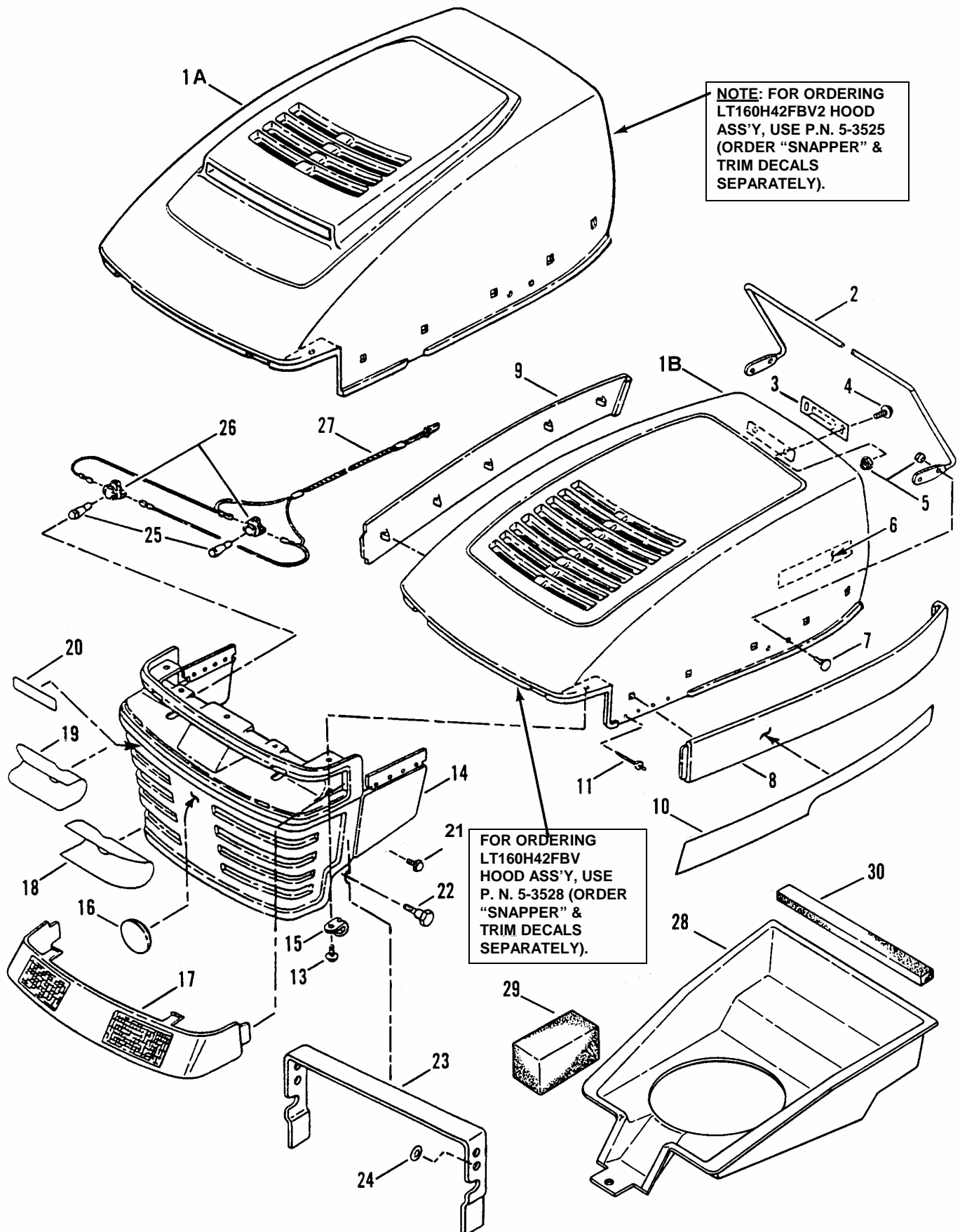
IT IS THE POLICY OF SNAPPER TO IMPROVE ITS PRODUCTS WHENEVER IT IS POSSIBLE AND PRACTICAL TO DO SO. WE RESERVE THE RIGHT TO MAKE CHANGES OR ADD IMPROVEMENTS AT ANY TIME WITHOUT INCURRING ANY OBLIGATION TO MAKE SUCH CHANGES ON PRODUCTS MANUFACTURED PREVIOUSLY.

SNAPPER[®] McDonough, GA., 30253 U.S.A.

CONTENTS

GROUP	PAGE
HOOD, BUMPER, HEADLIGHTS & COMPONENTS	4-5
STEERING WHEEL, CONSOLE, FUEL TANK	6-7
SEAT, REAR FENDER & COMPONENTS.....	8-9
CAST FRONT AXLE	10-11
WHEELS, FRONT & REAR	12-13
TRANSMISSION GROUP (HYDRO DRIVE).....	14-15
FRAME, CLUTCH, BRAKE & STEERING COMPONENTS	16-17
BLADE ENGAGEMENT & TRANSMISSION CONTROLS	18-19
42" CUTTING DECK (Belt, Blade Brake Shown on Page 27).....	20-21
48" CUTTING DECK SUB-ASSEMBLY (5-7821)	22-23
48" CUTTING DECK, BELTS, BRAKES.....	24-25
SPINDLE ASSEMBLY - 42" CUTTING DECK.....	26
BELT, BLADE BRAKE - 42" CUTTING DECK	27
48" DECK, IDLER ASSEMBLIES.....	28-29
IMPLEMENT LIFT PARTS.....	30
SPINDLE ASSEMBLIES- 48" CUTTING DECK.....	31
ENGINE COMPONENTS (Model: LT160H42GBV).....	32-33
ENGINE COMPONENTS (Model: LT160H42GBV2).....	34-35
ENGINE COMPONENTS (Model: LT180H48GBV2).....	36-37
ELECTRICAL - (Model: LT160H42GBV).....	38
ELECTRICAL - (Models: LT160H42GBV2 & LT180H48GBV2)	39
ELECTRICAL COMPONENTS	40
HYDRO RESERVOIR ASSEMBLY.....	41
DECALS	42-43

HOOD, BUMPER, HEADLIGHTS & COMPONENTS

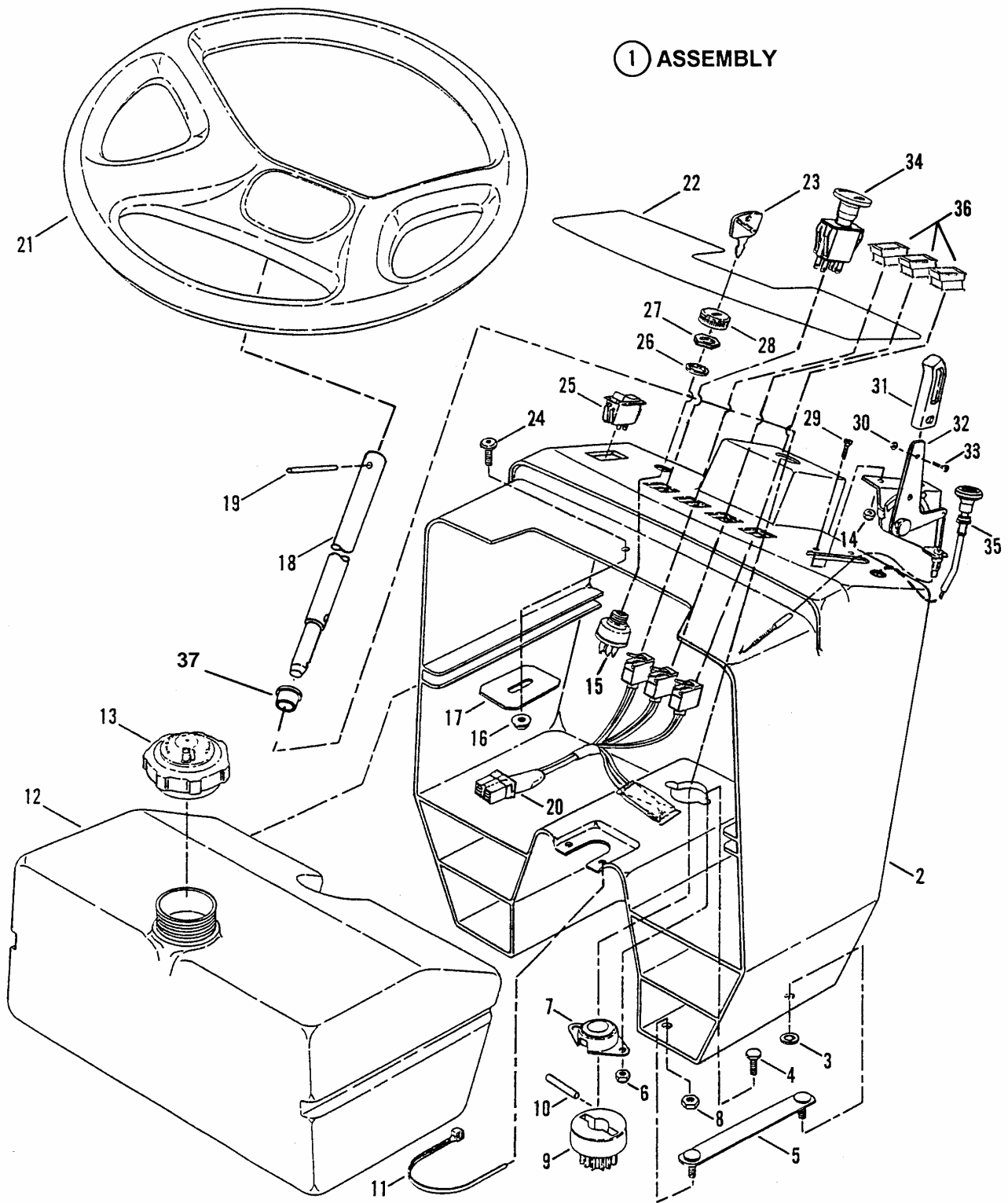


HOOD, BUMPER, HEADLIGHTS & COMPONENTS

ITEM	PART NO.	DESCRIPTION
1A	2-6406	HOOD, Mozart (with Scoop) (Models: LT160H42FBV2 & LT180H48FBV2)
1B	2-4471	HOOD, Mozart (Model: LT160H42FBV)
2	1-6766	ROD, Hood Support
3	2-4718	LATCH, Spring
4	9-0999	SCREW, 1/4-20 x 5/8" Truss Head, Torx (2)
5	7-6978	NUT, 1/4-20 Hex Nyloc (6)
6	3-6438	DECAL, SNAPPER, 8" Molded Logo
7	9-0803	BOLT, 1/4-20 x 5/8" Flat Head Carriage (4)
8	2-9572	PANEL, Hood (Left Hand)
9	2-9571	PANEL, Hood (Right Hand)
10	2-9020	DECAL, Hood (Right Hand) (Model:LT160H42FBV)
--	2-9019	DECAL, Hood (Left Hand) (Model: LT160H42FBV)
--	2-7820	DECAL, Hood (Right Hand) (Model: LT160H42FBV2)
--	2-7821	DECAL, Hood (Left Hand) (Model: LT160H42FBV2)
--	4-6756	DECAL, Hood (Right Hand) (Model: LT180H48FBV2)
--	4-6757	DECAL, Hood (Left Hand) (Model: LT180H48FBV2)
11	9-1095	RIVET, 1/8" Pop (8)
13	9-1106	SCREW, M4.8 x 1.59 x 16.00mm, Special (5)
14	2-9570	GRILLE, Hood
15	2-6482	CLIP, "J"
16	7-1544	DECAL, Molded Medallion
17	2-9602	LENS, Grille (Headlights)
18	2-6180	DECAL, Reflect (Left Hand)
19	2-6179	DECAL, Reflect (Right Hand)
20	2-2968	DECAL, SNAPPER, 4" Molded Logo (Silver Letters - Blue Stripe)
21	9-0858	SCREW, 5/16-18 x 1/2" Self-Tapping (4)
22	2-4061	BOLT, Shoulder, 3/8-16 x 1-1/4" Hex Socket, Torx (2)
23	3-4324	BRACE, Hood Support
24	1-1791	RETAINER, 5/16" Bolt
25	2-6172	BULB, Headlights (2)
26	2-4709	SOCKET, Headlight Bulb (2)
27	2-6171	HARNESS, Headlight Wiring
28	2-8764	PLENUM (Models: LT160H42FBV2 & LT180H48FBV2 Only!)
29	2-6844	FOAM, 2 x 2 x 3.5" (Models: LT160H42FBV2 & LT180H48FBV2 Only!)
30	2-6803	FOAM, 1/2 x 3/4 x 14.25" (Models: LT160H42FBV2 & LT180H48FBV2 Only!)

STEERING WHEEL, CONSOLE, FUEL TANK

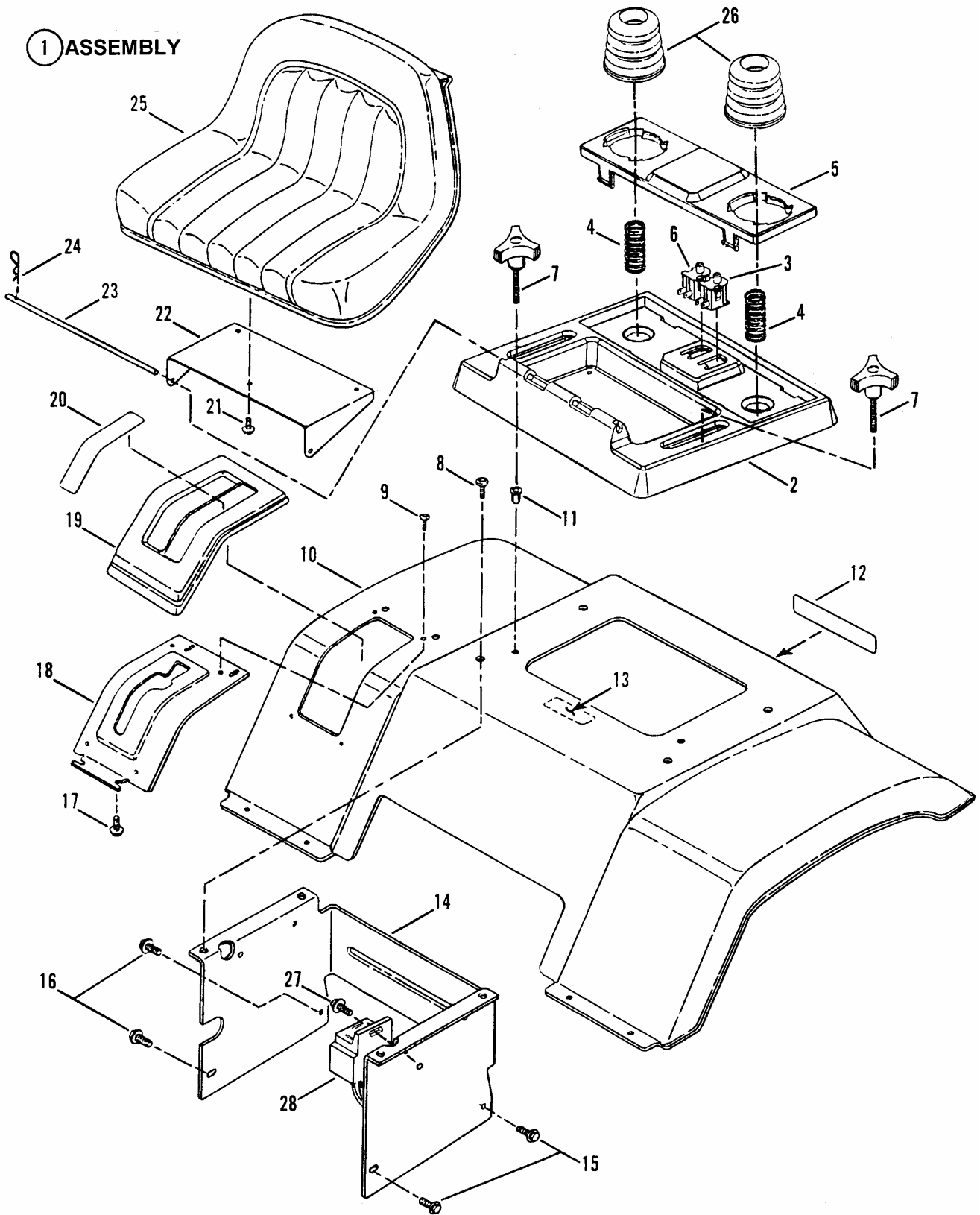
① ASSEMBLY



STEERING WHEEL, CONSOLE, FUEL TANK

ITEM	PART NO.	DESCRIPTION
1	5-3746	ASSEMBLY, Console (Includes 2 thru 7) (all models)
2	2-8565	CONSOLE
3	1-1791	RETAINER, 5/16 Bolt (4)
4	9-1495	SCREW, 1/4-20 x 3/4" Hex Head Cap, Grade 5 (2)
5	5-2891	ASSEMBLY, Strap-Clinch Stud (2)
6	7-6978	NUT, 1/4-20 Hex Nyloc (2)
7	2-6196	ASSEMBLY, Flange Bearing
8	9-1575	NUT, 5/16-18 Hex Center Lock, Grade B or 5 (4)
9	2-2368	GEAR, Pinion, Steering Shaft
10	2-2369	PIN, Dowel, 1/4 x 1-1/4"
11	2-4641	TIE, Wire (Models: LT160H42FBV2 & LT180H48FBV2 Only)
12	5-2907	ASSEMBLY, Fuel Tank (Includes item 13)
13	1-4363	CAP, Fuel Tank
14	9-1599	NUT, #10-24 Hex Nyloc (2)
15	2-6343	KEY SWITCH (Includes item 27)
16	9-0951	NUT, 5/16-18 Hex Flange Lock
17	3-3883	BRACKET, Hood Latch Catch
18	2-2380	SHAFT, Steering
19	1-2765	ROLL-PIN, 1/4 x 2-1/4"
20	2-8679	LIGHTS, Indicator (Models: LT160H42FBV2 & LT180H48FBV2 Only!)
21	2-9595	STEERING WHEEL
22	2-8562	DECAL, Console (Model: LT160H42FBV)
--	2-8563	DECAL, Console (Models: LT160H42FBV2 & LT180H48FBV2)
23	2-3504	KEY, Special (With Cover)
24	9-1001	SCREW, 5/16-18 x 5/8" Truss Head, Torx
25	2-3187	SWITCH, Lights
26	2-9714	SPACER (Models: LT160H42FBV & LT160H42FBV2 Only)
27	2-9721	NUT, 5/8-32 Hex
28	2-3506	BEZEL
29	9-1188	SCREW, #10-24 x 5/8" Machine (2)
30	9-1018	NUT, #8-32 Hex, Grade 2 or B
31	2-3655	HANDLE, Throttle Control
32	2-4642	CONTROL, Throttle (Model: LT160H42FBV)
--	2-8564	CONTROL, Throttle (Models: LT160H42FBV2 & LT180H48FBV2)
33	9-1017	SCREW, #8-32 x 3/8" Cross-Recessed, Fillester Head, Grade 2
34	2-8542	SWITCH, PTO
35	2-8566	CABLE, Choke (Models: LT160H42FBV2 & LT180H48FBV2 Only!)
36	2-5007	LENS, Indicator Light (Models: LT160H42FBV2 & LT180H48FBV2 Only!)
37	3-5496	BEARING, 3/4" I.D.

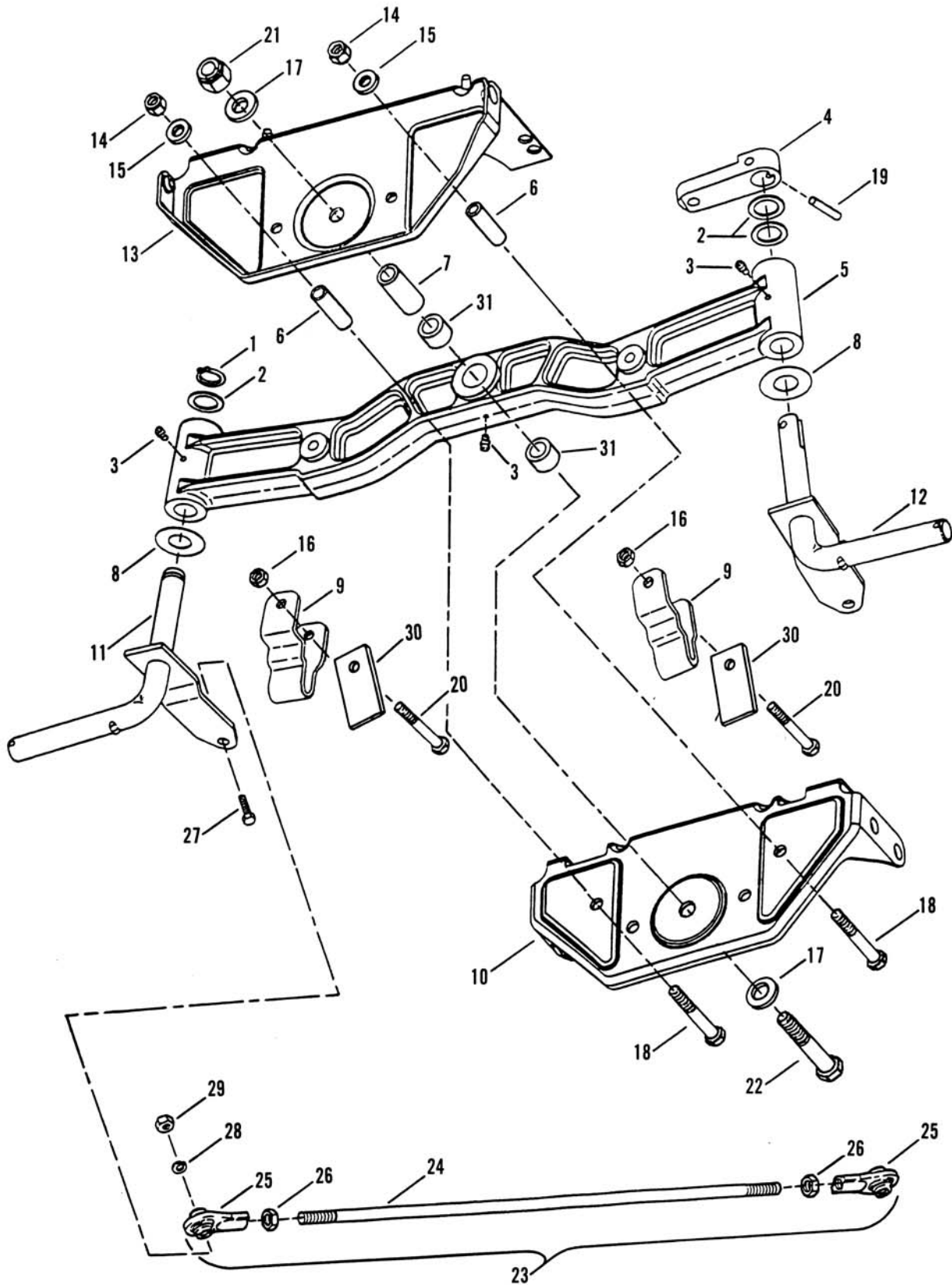
SEAT, REAR FENDER & COMPONENTS



SEAT, REAR FENDER & COMPONENTS

ITEM	PART NO.	DESCRIPTION
1	5-3745	ASSEMBLY, Seat Support (Includes items 2, 3, 4, 5, & 6)
2	2-8579	SUPPORT, Seat
3	2-3354	SWITCH, Seat, Gray, (N.C.)
4	7-3266	SPRING, Cushion Holder (2)
5	2-8580	HOLDER, Cushion
6	1-5707	SWITCH, Seat, Black, (N.O.)
7	1-7875	KNOB, Seat Adjustment, 5/16-18 x 2" (2)
8	9-1001	SCREW, 5/16-18 X 5/8" Truss Head Torx (4)
9	9-0362	SCREW, 1/4-20 x 5/8" Hex Washer Head, Self-Tapping (4)
10	3-4862	PAN, Seat (Fender)
11	9-1761	RIV-NUT, 5/16-18 Round (2)
12	2-2971	DECAL - SNAPPER, 7.28" Molded Logo, Silver Letters & Blue Stripe
13	2-6415	DECAL - CAUTION, Battery Location
14	7-2788	SUPPORT, Fender
15	9-1523	SCREW, 5/16/18 x 5/8" Hex Washer Head, Swage Form
17	9-1105	SCREW, #10-16 x 1/2" Hex Washer Head, Self-Tapping (4)
18	3-3120	DETENT, Shift
19	2-4894	COVER, Shift
20	1-6576	DECAL, Shift Cover, 5-Speed
21	9-1525	BOLT, 5/16-18 x 1/2" Hex Flange Lock, Grade 5 (3)
22	3-3318	BRACKET, Seat Support
23	3-3435	ROD, Seat Hinge
24	9-1503	PIN, 3/32 x 1-1/2" Hair
25	3-5579	SEAT, Operator, V560
26	1-9109	CUSHION, Seat (2)
27	9-0913	SCREW, 10-24 x 1/2" (Torx)
28	2-8571	RECEPTACLE, Female Wire Harness Relay (Model: LT160H42FBV)
--	2-8520	RECEPTACLE, Female Wire Harness Relay (Models: LT160H42FBV2 & LT180H48FBV2)

CAST FRONT AXLE

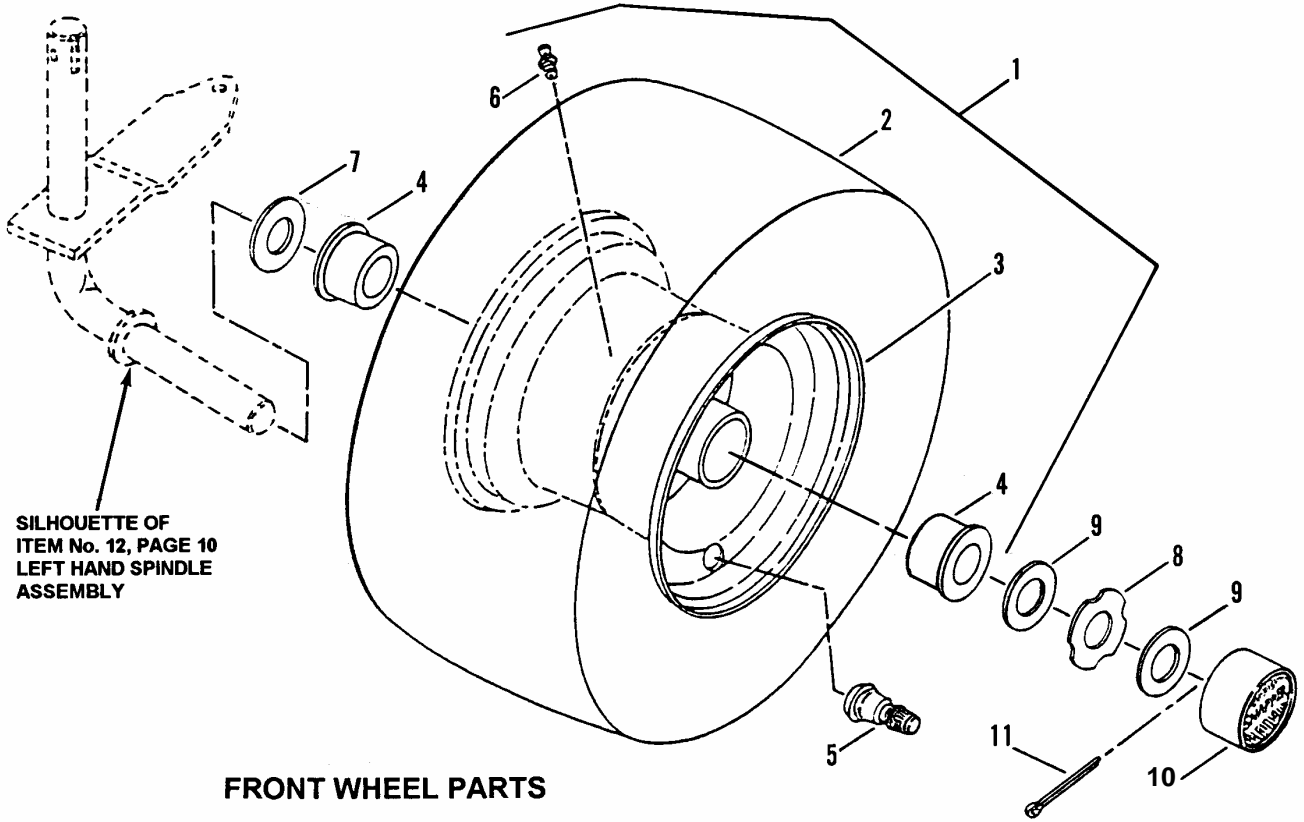


CAST FRONT AXLE

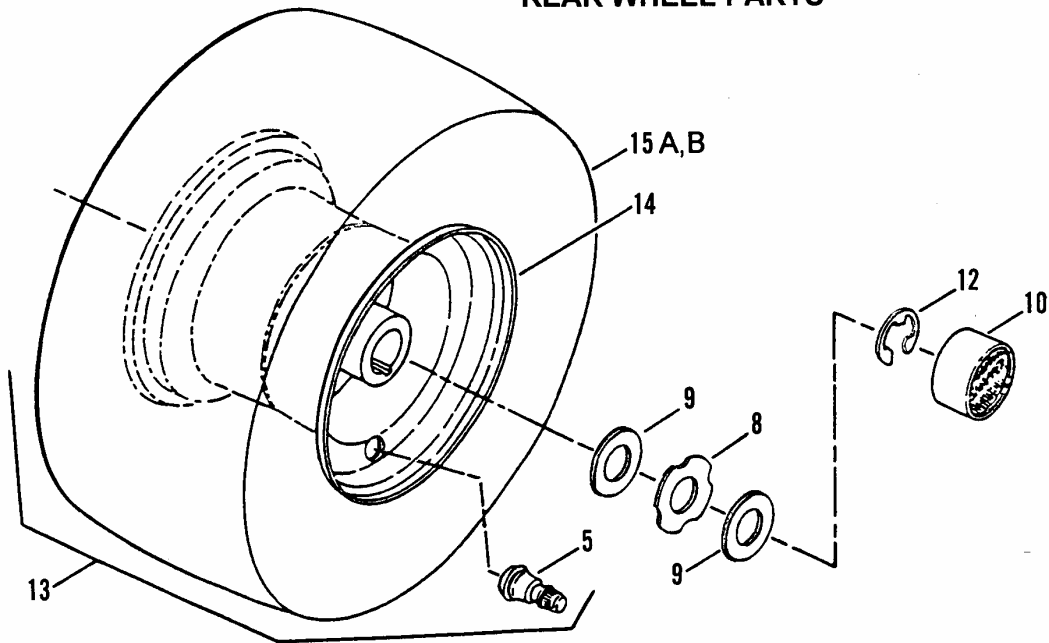
ITEM	PART NO.	DESCRIPTION
1	1-0746	RING, 5/8 External Retaining
2	1-0935	WASHER, 49/64 x 1-1/8 x 1/16" Flat
3	1-4669	FITTING, 3/16 Lube
4	1-9034	ARM, Steering
5	7-2411	AXLE, Cast
6	2-8666	SPACER, 25/64 x 1/2 x 1-13/16" (2)
7	2-8689	SPACER, Center
8	3-1036	WASHER, Thrust (2)
9	3-3383	BRACKET, Deck Hanger (2)
10	3-4740	BRACKET, Cast Axle (Rear)
11	4-1251	WELDMENT, Right Hand Spindle Wheel (Short)
12	4-1250	WELDMENT, Left Hand Spindle Wheel (Short)
13	5-3804*	BRACKET, Cast Axle Front (LT160HFBV2 & LT180H42FBV2)
--	5-4515*	BRACKET, Cast Axle Front (Model: LT160H42FBV Only)
14	7-6979	NUT, 3/8-16 Hex Nyloc (2)
15	9-0122	WASHER, 3/8 x 5/64" Flat (2)
16	9-0184	NUT, 5/16-18 Hex Center Lock (2)
17	9-0250	WASHER, 1/2 x 3/32" Flat (2)
18	9-0795	SCREW, 3/8-16 x 2-3/4" Hex Head Cap, Grade 2 (2)
19	9-0842	PIN, 1/4 x 1-1/4" Roll
20	9-0831	SCREW, 5/16-18 x 2-3/4" Hex Head Cap, Grade 5 (2)
21	9-1121	NUT, 1/2-13 Hex Nyloc
22	9-1694	SCREW, 1/2-13 x 3" Hex Head Cap Grade 5
23	5-3873	ASSEMBLY, Tie Rod (Includes items 24, 25, & 26)
24	3-4777	ROD, Steering Connector
25	2-7936	ROD END (2)
26	9-0482	NUT, 3/8-24 Hex Jam (2)
27	9-1497	SCREW, 3/8-16 x 1-1/2" Hex Head Cap, Grade 5 (2)
28	9-1320	WASHER, 3/8 Split Lock (2)
29	9-1302	NUT, 3/8-16 Hex, Grade 5 (2)
30	3-5372	SPACER, Steering Stop
31	1-2706	BEARING, Sleeve (2)

***NOTE: This assembly consists of a bracket and two installed clinch studs.**

WHEELS, FRONT & REAR



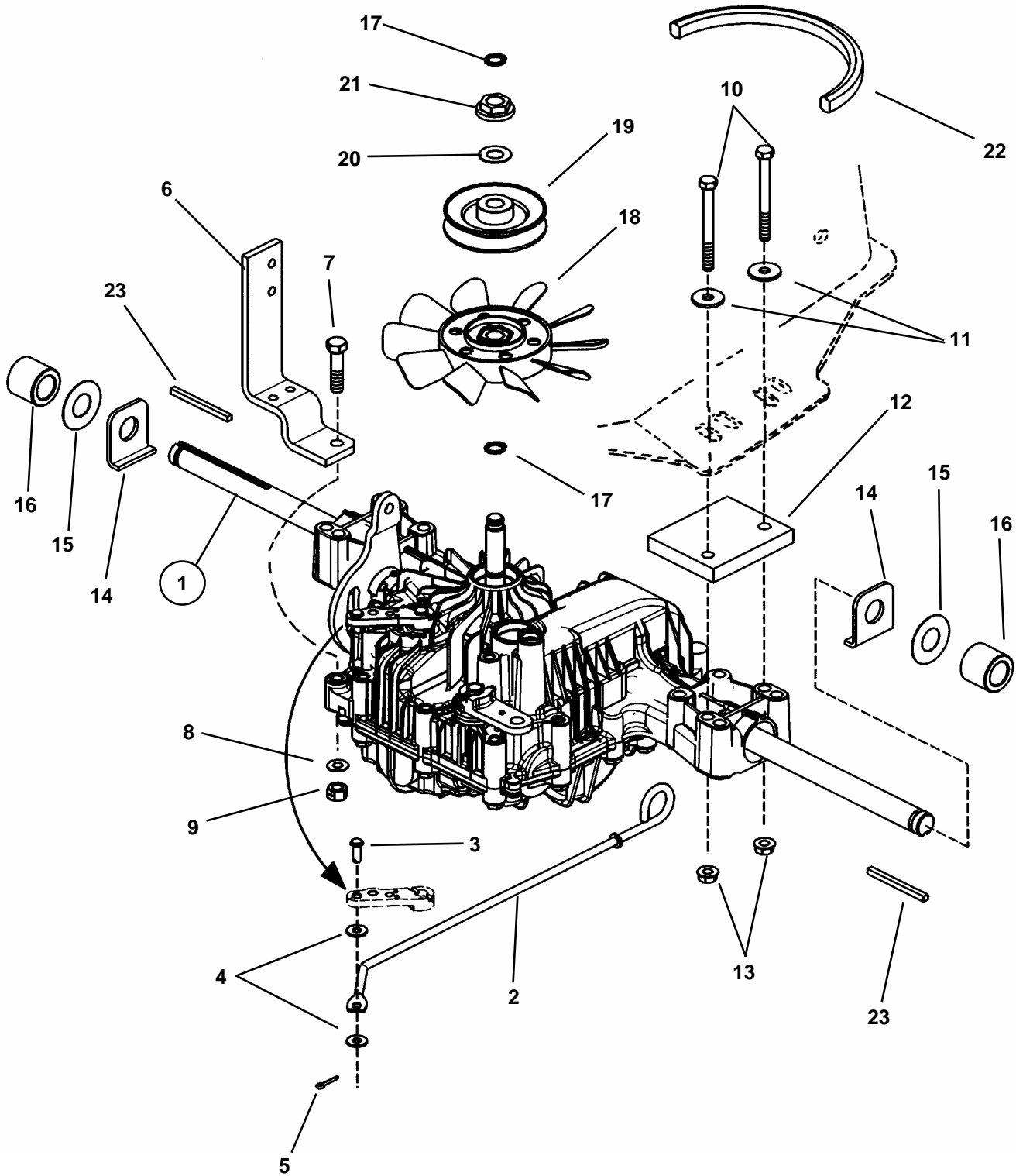
REAR WHEEL PARTS



WHEELS, FRONT & REAR

ITEM	PART NO.	DESCRIPTION
1	5-8517	ASSEMBLY, Front Tire & Rim (Includes items 2, 3, 4, 5 & 6) (Models: LT160H42FBV & LT160H42FBV2)
--	5-8521	ASSEMBLY, Front Tire & Rim (Includes items 2, 3A, 4A, 5 & 6) (Model: LT180H48FBV2)
2	7-2704	TIRE, 15 x 6.00
3	2-2772	RIM, 6.00 x 3.50
3A	7-1966	RIM, 6.00 x 4.00 Grey
4	1-4483	BEARING, Wheel (4)
4A	2-8722	BEARING, Wheel (Heim) (4)
5	1-2234	VALVE, Air (Snap-in) (4)
6	1-3876	FITTING, Lube (2)
7	3-4453	WASHER, Flat, 5/32 x 25/32" I.D. x 1-1/2" O.D. (2)
8	2-9618	WASHER, Hub-Cap Retaining (4)
9	2-9617	WASHER, Flat, 1/16 x 49/64 I.D. x 1-5/16" O.D.(8)
10	1-1022	HUB-CAP (4)
11	9-1516	COTTER-PIN, 5/32 x 1" (2)
12	2-9738	RING, External Retaining, 3/4" (2)
13	5-8519	ASSEMBLY, Rear Tire & Rim (Includes items 5, 14, & 15A) (Model: LT160H42FBV)
--	5-8520	ASSEMBLY, Rear Tire & Rim (Includes items 5, 14, & 15B) (Models: LT160H42FBV2 & LT180H48FBV2)
14	2-4454	RIM, 8 x 7.00
15A	7-2706	TIRE, 18 x 9.50
15B	7-2707	TIRE, 20 x 10.00

TRANSMISSION GROUP (Hydro Drive)

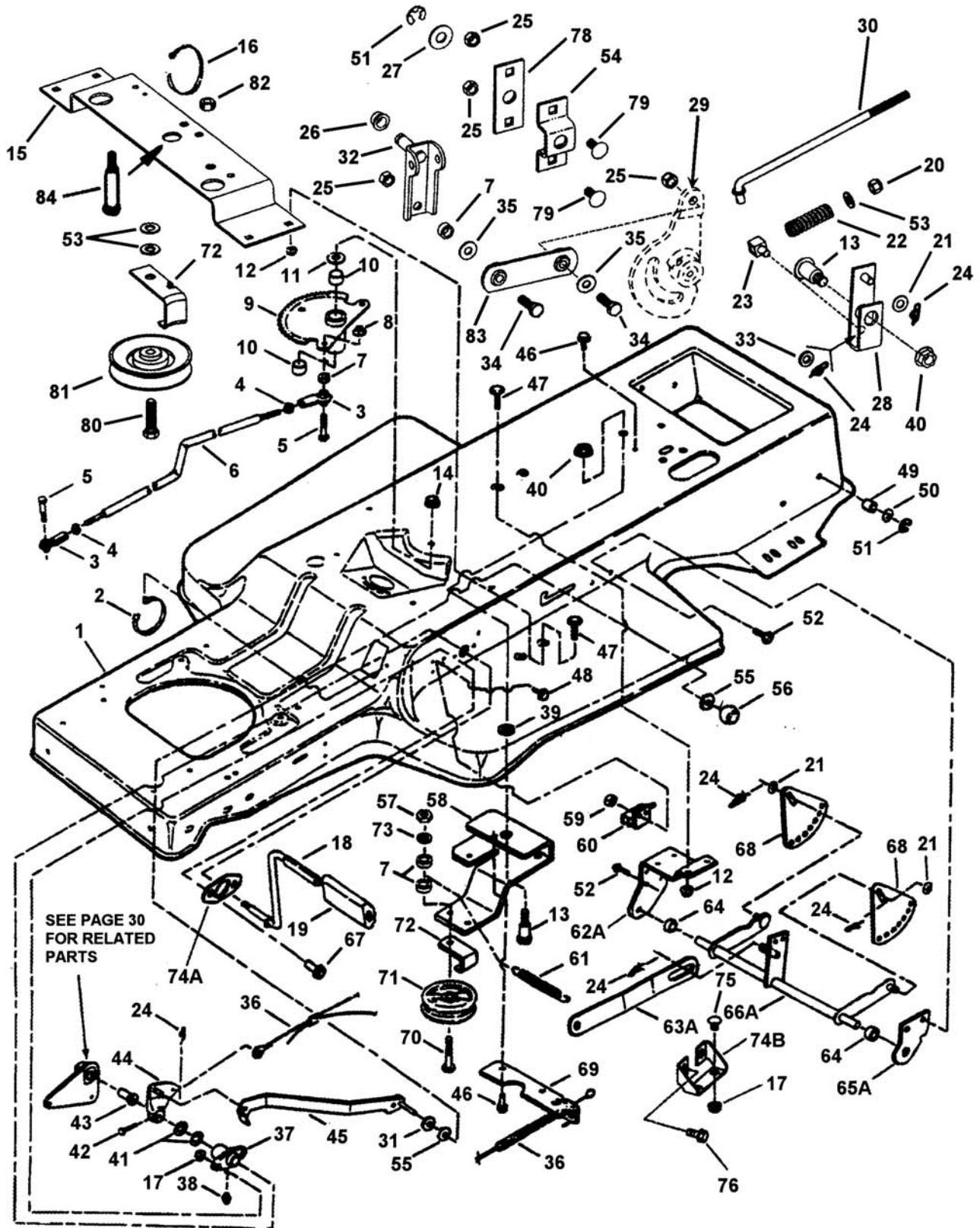


TRANSMISSION GROUP (Hydro Drive)

ITEM	PART NO.	DESCRIPTION
1	7-3114	ASSEMBLY, Transaxle, Tuff Torq (Models: LT160H42FBV & LT160H42FBV2)
--	7-2635	ASSEMBLY, Transaxle, Tuff Torq (Model LT180H48FBV2)
2	7-2387	ROD, Roll Release (K46)
3	9-1708	PIN, Clevis 1/4" x 5/8"
4	9-0055	WASHER, 1/4 x 5/8 x 1/16" Flat (2)
5	9-0555	PIN, 3/32" x 1/2" Cotter
6	7-2601	BRACKET, Torque
7	9-1497	SCREW, 3/8-16 x 1-1/2" Hex Head Cap, Grade 5
8	9-1296	WASHER, 5/16 x 11/16 x 1/16", Grade 5
9	9-1585	NUT, 3/8-16 Hex Center Lock
10	9-1830	SCREW, 5/16-18 x 3-1/4" Hex Head Cap, Grade 5 (4)
11	9-1675	WASHER, 5/16" Flat (4)
12	7-2717	SPACER, Hydro Axle- K46
13	9-1601	NUT, 5/16-18 Hex Flange Lock Grade 5 (4)
14	7-2884	WASHER, Axle (2)
15	3-1036	WASHER, Thrust (2)
16	7-2385	SPACER, Axle (2)
17	*--	RING, E 15 (2) (Vendor # 192154-89090)
18	*--	FAN (Vendor # 1A6460-83050)
19	*--	PULLEY, 4" Diameter (42" Deck) (Vendor # 1A6460-25333)
	*--	PULLEY, 4-1/2" Diameter (48" Deck) (Vendor # 1A6460-25343)
20	*--	WASHER, Wave (Vendor # 1A6460-83060)
21	*--	SPACER (Vendor # 1A6460-25300)
22	7-2657	BELT, Traction Drive (HA Section, 97.881 Effective Length)
23	7-2386	KEY, 3/16" Square x 2-3/16" long (2)

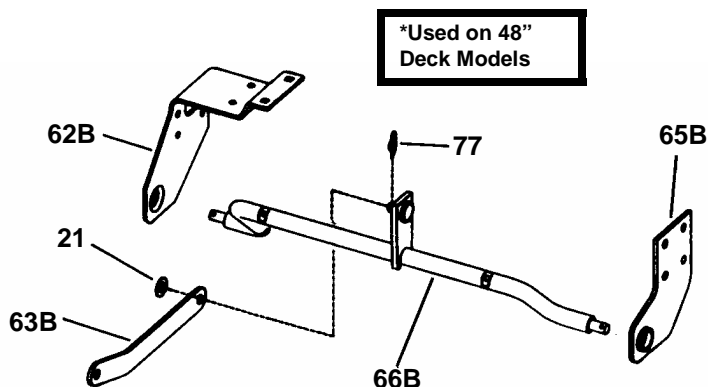
<p>*NOTE Snapper numbers are not available for these items at this time. Order from Tuff-Torq (for Model K46)</p>
--

FRAME, CLUTCH, BRAKE & STEERING COMPONENTS

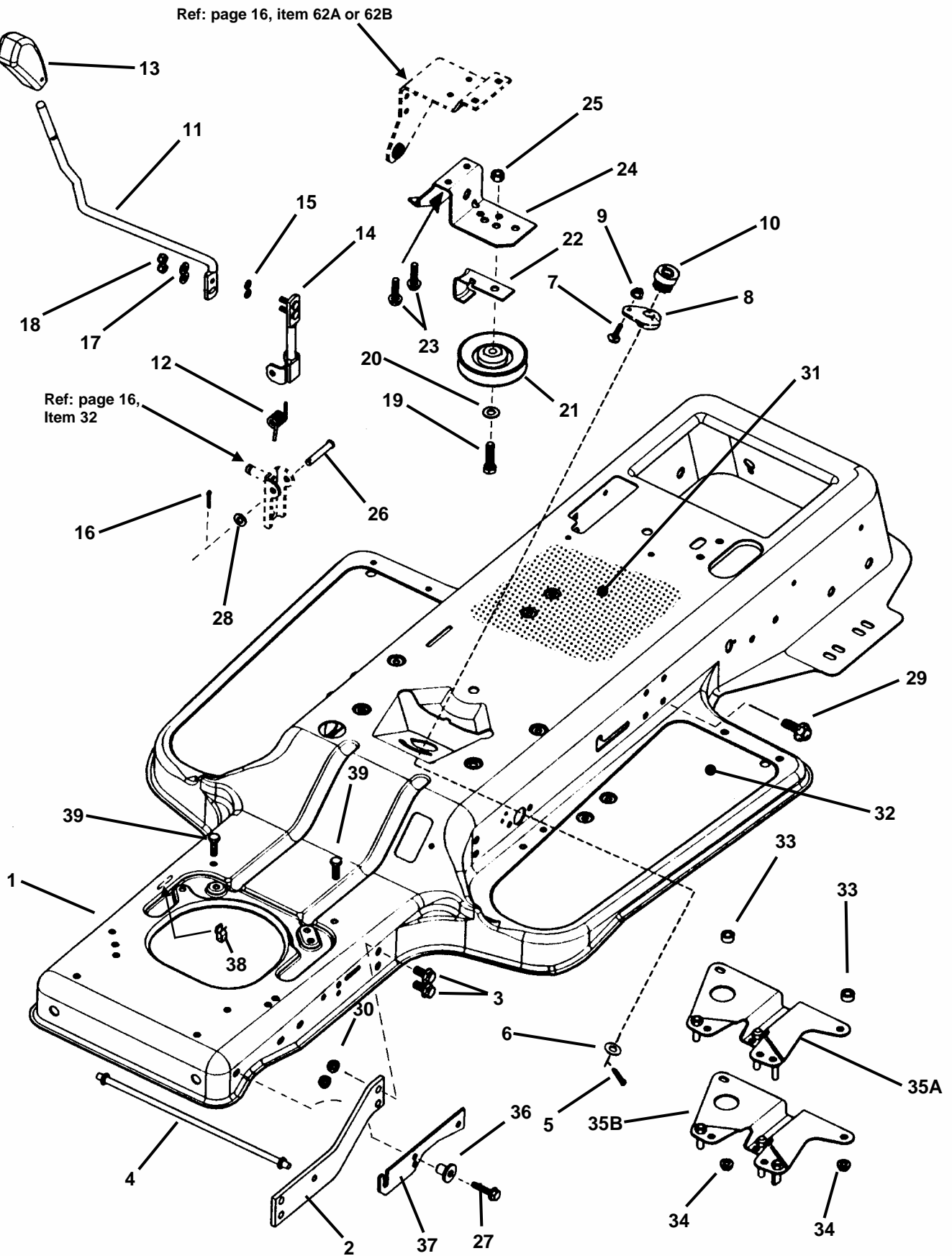


FRAME, CLUTCH, BRAKE & STEERING COMPONENTS

ITEM	PART NO.	DESCRIPTION	ITEM	PART NO.	DESCRIPTION
1	7-2711	FRAME, Tractor (1 piece)	40	9-0619	NUT, 1/2-13 Hex Flange Lock
2	1-4451	TIE, Wire	41	1-5992	WASHER, 5/8" Flat (2)
3	2-7936	ROD END (2)	42	2-3645	PIN, 3/16 x 1-1/2" Clevis
4	9-0482	NUT, 3/8-24 Hex Jam (2)	43	2-2742	BEARING, Flange
5	9-0163	SCREW, 3/8-24 x 1-1/4" HHC (2)	44	4-1236	WELDMENT, Clutch Brake Arm
6	2-8420	LINK, Drag	45	4-1244	LATCH, Park Brake
7	2-4180	SPACER (4)	46	9-0361	SCREW, 5/16-18 x 5/8" S.Tap (3)
8	9-0613	NUT, 3/8-16 Hex Flange Lock	47	9-0803	BOLT, 1/4-20 x 5/8" Carriage (6)
9	5-3568	ASS'Y, Sector Gear (Incl. 4-1267 Weldment & item 10)	48	9-1240	SCREW, #10-32 x 5/8" H.W.H. (2)
10	1-2706	BEARING, Sector Gear (2)	49	1-1016	BUSHING, 1/2" Nylon (2)
11	3-1036	WASHER, 3/4" Thrust	50	9-1587	WASHER, 1/2" Flat (2)
12	9-0583	NUT, 1/4-20 Hex Flange Lock (6)	51	1-4341	RING, 1/2" External Retaining (3)
13	2-2381	BOLT, 1/2-13 x 2" Shoulder (2)	52	9-1001	SCREW, 5/16-18 x 5/8" Truss (5)
14	9-0975	NUT, 1/2-13 Hex Ctr. Lock, Gr. A	53	9-1514	WASHER, 3/8 Yellow Zinc Flat (3)
15	7-2636	BRACE, Sector Gear	54	7-2298	BRACKET, Pivot Mounting
16	1-2080	TIE, Cable 7"	55	2-3649	WASHER, 5/16" Nylon (2)
17	9-0585	NUT, 5/16-18 Hx. Flg. Lk., Gr 5 (4)	56	7-2403	KNOB, Clutch/Brake (5/16-18)
18	2-2743	PEDAL, Clutch Brake	57	9-1302	NUT, 3/8-16 Hex, Grade B or 5
19	1-2661	PAD, Pedal	58	3-3557	ARM, Idler (Traction Drive)
20	9-1299	NUT, 3/8-16 Hex Nyloc	59	9-0376	NUT, #10-32 Hex Nyloc (2)
21	9-0122	WASHER, 3/8 Bright Zinc, Flat (2)	60	2-3355	SWITCH, DPDT NC/NO
22	2-4381	SPRING, Brake	61	2-4383	SPRING, Traction Drive
23	2-8037	SWIVEL, Inline Brake	62A	3-4410	BRACKET, Rear Lift/PTO Lever
24	9-1593	PIN, 3/8 x 1-7/32" Cotter (Self-Locking) (5)	62B	4-7068*	BRACKET, Rear Lift/PTO Lever
25	9-1575	NUT, 5/16-18 Hex Center Lock (4)	63A	3-4850	LINK, Lift (Models: LT160H42FBV & LT160H42FBV2)
26	3-5527	BUSHING, 7/16" I.D. (2)	63B	4-6758*	LINK, Lift
27	9-1300	WASHER, .44" I.D. Flat	64	3-4384	SPACER (2)
28	5-8339	WELDMENT, Brake Arm	65A	3-3520	BRACKET, Deck Hang Pivot
29	--	ARM, Speed Control (component of transaxle, page 14)	65B	4-7055*	BRACKET, Rear Hanger- LH
30	7-2369	ROD, Brake	66A	4-1256	WELDMENT, Rear Lift
31	9-0188	WASHER, 5/16" Flat	66B	4-7052*	WELDMENT, Rear Lift
32	5-8299	WELDMENT, Pivot Shift Lever	67	9-1000	SCREW, 5/16-18 x 7/8" Truss Head (Torx) (2)
33	3-2070	WASHER, .406 I.D. Flat (2)	68	3-4377	PLATE, Lift Sector (2)
34	9-1527	SCREW, 5/16-18 x 1-1/4" Grade 5	69	3-4326	EXTENSION, Idler Arm
35	9-1296	WASHER, 5/16" Flat	70	9-1560	SCREW, 3/8-16 x 2-1/4" Cap Gr. 5
36	7-2626	ASSEMBLY, Clutch/Brake Cable	71	2-3954	PULLEY, Flat Idler, 3.47" O.D.
37	5-2431	ASSEMBLY, Foot Shaft Pivot (Includes item 38)	72	3-3556	GUIDE, Pulley (2)
38	1-3864	FITTING, Lube, 3/16	73	9-1320	WASHER, 3/8" Split Lock
39	9-0509	WASHER, 1/2" Internal Tooth Lock	74A	4-6754	WASHER, Pivot, Stiffener
			74B	4-7072*	BRACKET, Frame Brace
			75	9-0731*	BOLT, 5/16-18 x 5/8" Short Neck Carriage, Grade 5 (2)
			76	9-0368*	SCREW, 5/16-18 x 3/4" HWST (2)
			77	2-4159*	COTTER PIN, 1/16 x 1-7/32" Self Lock
			78	7-2598	BRACKET, Mounting Brace
			79	9-1097	BOLT, 5/16-18 x 3/4" Carriage, (2)
			80	9-1497	SCREW, 3/8-16 x 1-1/2" Cap, Gr. 5
			81	2-4344	PULLEY, Idler V 3.30 HA
			82	9-1585	NUT, 3/8-16 Hex Center Lock
			83	7-3087	LINK, Fwd/Rev
			84	2-4604	BOLT, 1/2-13 x 3-7/8" Shoulder



BLADE ENGAGEMENT & TRANSMISSION CONTROLS



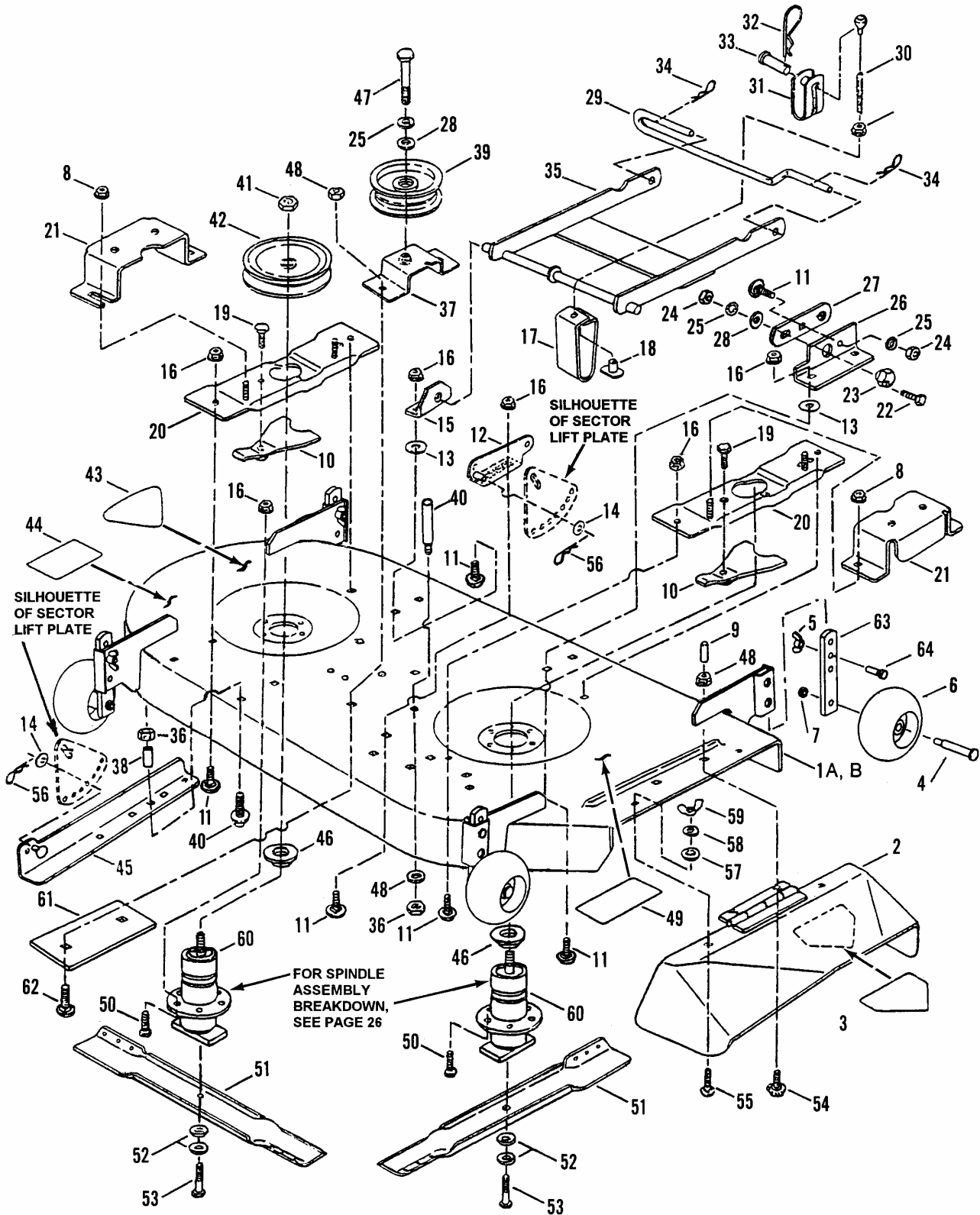
BLADE ENGAGEMENT & TRANSMISSION CONTROLS

ITEM	PART NO.	DESCRIPTION
1	7-2711	FRAME, Tractor (1 Piece)
2	4-6899*	BRACE, Frame- 48" (2)
3	9-0612*	BOLT, 3/8-16 x 3/4" Hex Flange Lock (8)
4	4-6900*	GUIDE, Belt- 48"
5	9-1598	COTTER-PIN, 1/8 x 3/4"
6	1-4296	WASHER, 1/2 Shim
7	9-1573	BOLT, 1/4-20 x 5/8" Short Neck Carriage, Grade 5
8	5-2562	ASSEMBLY, Steering Adjuster
9	9-1584	NUT, 1/4-20 Hex Flange Lock, Grade 5
10	2-2368	GEAR, Steering Pinion
11	7-2306	LEVER, Shift (Upper)
12	7-2461	SPRING, Shift Torsion Shift Lever
13	2-3656	KNOB, Deck Lift Lever
14	5-8492	WELDMENT, Shift Lever (Upper)
15	9-1023	WASHER, 1/4 Internal Tooth Lock (2)
16	9-0364	COTTER-PIN, 5/32 x 1"
17	9-0055	WASHER, 1/4 Flat (2)
18	7-6978	NUT, 1/4-20 Hex Nyloc (2)
19	9-1497	SCREW, 3/8-16 x 1-1/2" Hex Head Cap, Grade 5
20	9-1514	WASHER, 3/8 Flat
21	2-4344	PULLEY, Idler
22	3-3556	GUIDE, Pulley Belt
23	9-1524	SCREW, 5/16-18 x 1-1/4" Swage (3)
24	3-5524	SUPPORT, PTO Lever
25	9-1585	NUT, 3/8-16 Hex Center Lock, Grade 5 (2)
26	9-2028	PIN, 5/16 x 1.73" Clevis
27	9-1151	SCREW, 5/16-18 x 1-1/4" Self-Tapping (4)
28	9-1296	WASHER, 5/16" Flat
29	9-0361*	SCREW, 5/16-18 x 5/8" Hex Washer Self-Tap (7)
30	9-0613*	NUT, 3/8-16 Hex Flange Lock (8)
31	7-2755	DECAL, Instruction Frame Top (EC)
32	2-8203	PAD, Foot (Rubber Deluxe) (2)
33	2-8620	SPACER, 11/32 x 5/8 x 5/16" (2)
34	9-0585	NUT, 5/16-18 Hex Flange Lock, Grade 5 (2)
35A	5-8664	ASSEMBLY, Anti-Spin/Belt Guide (for 42" Deck)
35B	5-8514	ASSEMBLY, Anti-Spin/Belt Guide (for 48" Deck)
36	2-4616	BUSHING, Flange (2)
37	3-3488	BRACKET, Hood Pivot
38	2-8630	CLIP, Wire
39	9-0209	SCREW, 5/16-18 x 1" Hex Head Cap, Grade 2 (2)

***Used on 48" Deck Models**

42" CUTTING DECK

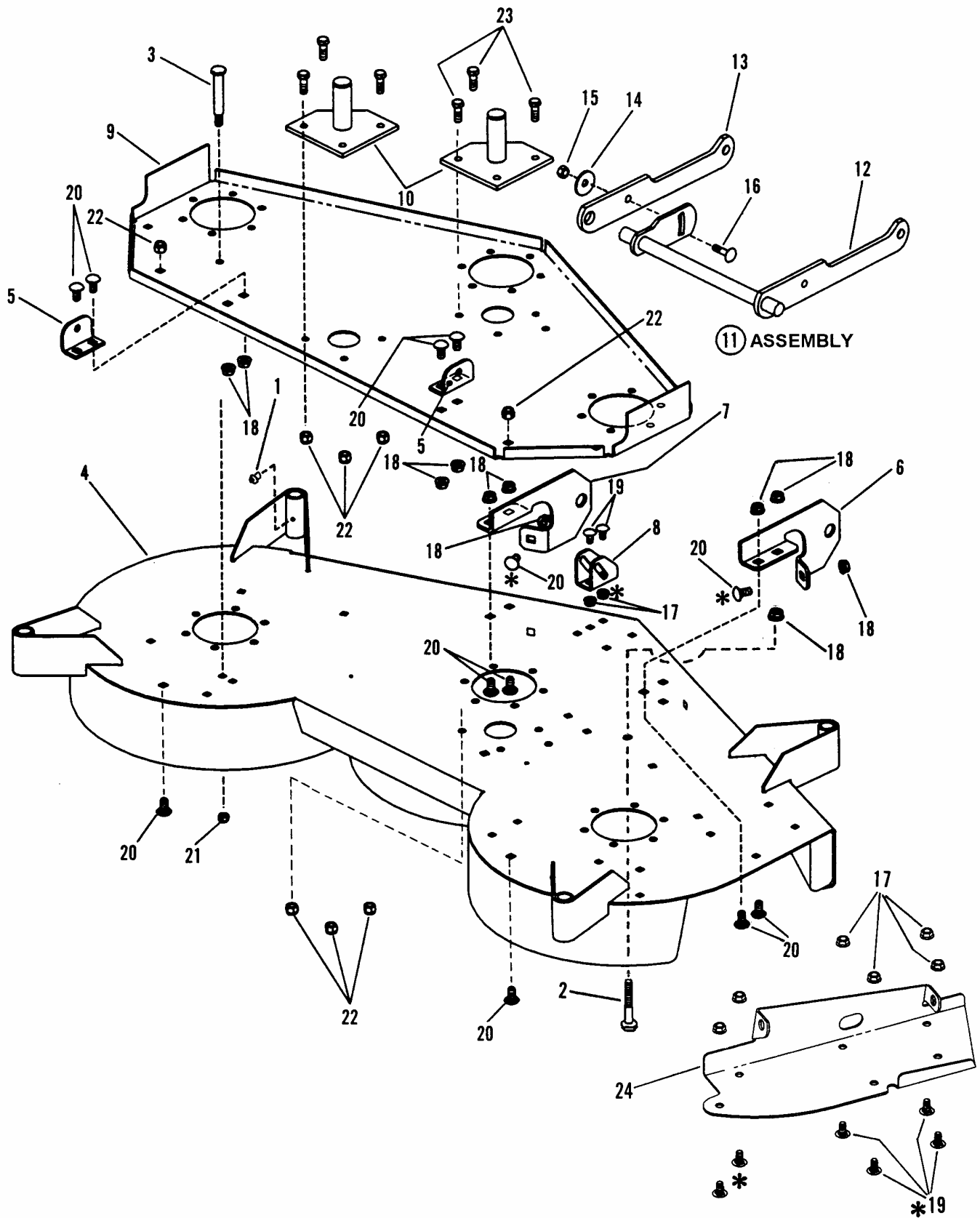
(Belt, Blade Brake Shown on Page 27)



42" CUTTING DECK (Belt, Blade Brake Shown on Page 27)

ITEM	PART NO.	DESCRIPTION	ITEM	PART NO.	DESCRIPTION
1A	5-4168	ASSEMBLY, 42" Cutting Deck (Includes Decal items 44 & 49) (Model: LT160H42FBV)	33	2-9687	PIN, Clevis, 3/8 x 1-1/16"
1B	5-4170	ASSEMBLY, 42" Cutting Deck (Includes Decal items 44 & 49) (Model: LT160H42FBV2)	34	9-1596	PIN, Hair, .148 x 2.62" (2)
2	5-1401	DEFLECTOR, Side Discharge (Includes item 3)	35	4-1480	ASSEMBLY, Front Hanger
3	2-6831	DECAL - DANGER	36	9-1585	NUT, 3/8 - 16 Hex Center Lock, Grade 5 or B
4	2-9265	BOLT, Gage Wheel (4)	37	5-3567	BRACKET, Idler
5	9-1049	NUT, 3/8-16 Wing (4)	38	2-8942	SLEEVE, 1/2 x 13/32 x 3/8"
6	2-9264	WHEEL, Gage (4)	39	1-8574	PULLEY, Idler 4-1/8"
7	9-1585	NUT, 3/8-16 Hex Center Lock, Grade 5 or B (4)	40	9-0614	BOLT, 3/8-16x1-1/2" Hex Flange Lock, Grade 5
8	9-0585	NUT, 5/16-18 Hex Flange Lock, Grade 5 (10)	41	1-0027	NUT, 3/4-16 Hex Jam (2)
9	2-3606	CAP, Vinyl (2)	42	2-4863	PULLEY, Spindle (2)
10	5-1747	ASSEMBLY, Spindle Lock (2)	43	2-4910	DECAL, 42" Deck
11	9-0850	BOLT, 3/8-16 x 3/4" Carriage, Grade 2 (12)	44	1-6973	DECAL - CAUTION (Rotating Blades)
12	4-2578	BRACKET, Lift (Right Side)	45	4-2607	BRACKET, Deck Lift (Left Side)
--	4-2609	BRACKET, Lift (Right Side) (Model: LT160H42FBV2 Only!)	--	4-2606	BRACKET, Deck Lift (Left Side) (Model LT160H42FBV2 Only)
13	9-0600	WASHER, 3/8 Flat (4)	46	1-4407	WASHER, Spindle (2)
14	9-1514	WASHER, 13/32 Flat (2)	47	9-1580	BOLT, 3/8-16 x 1-3/4" Hex Flange Lock
15	3-2297	BRACKET, Front Hanger (Left Side)	48	9-1601	NUT, 5/16-18 Hex Flange Lock, Grade 5 (3)
16	9-0613	NUT, 3/8-16 Hex Flange Lock (15)	49	1-4852	DECAL - CAUTION (Deflector in Place)
17	3-8043	BRACKET, Front Lift Arm Hanger	50	9-0612	BOLT, 3/8-16 x 3/4" Hex Flange Lock (12)
18	9-1567	T-NUT, 5/16-18 Thread	51	2-6691	BLADE, 21" Cutter (2)
19	9-0582	BOLT, 3/8-16 x 1" Hex Flange Lock (2)	52	1-2063	WASHER, Cone, 13/32 x 1-13/32" Diameter (4)
20	5-2487	ASSEMBLY, Spindle Brace (2)	53	9-0824	SCREW, 3/8-24 x 1-1/4" Hex Head Cap, Grade 5 (2)
21	3-4409	GUARD, Pulley (2)	54	9-1303	BOLT, 5/16-18 x 1" Short Neck Carriage, Grade 5 (2)
22	9-0563	SCREW, 3/8-16 x 1" Hex Head Cap, Grade 5	55	9-0799	BOLT, 5/16-18 x 5/8" Carriage, Grade 5 (2)
23	1-5012	ECCENTRIC, Leveling	56	9-1503	PIN, Hair, 3/32 x 1-1/2" (2)
24	9-0130	NUT, 3/8-16 Hex (2)	57	1-1791	RETAINER, 5/16" Bolt (2)
25	9-0118	WASHER, 3/8 Split Lock (3)	58	9-1315	WASHER, 5/16 Split Lock (2)
26	3-8382	BRACKET, Front (Right Side)	59	9-1537	WING-NUT, 5/16-18 (2)
27	3-2432	LINK, Adjustment	60	5-9723	ASSEMBLY, Spindle (2)
28	9-0122	WASHER, 3/8 Flat (2)	61	3-4202	PLATE, Support
29	2-7471	PIN, Deck Hanger	62	9-0636	SCREW, 5/16-18 x 1" Hex Head Cap, Grade 5 (2)
30	2-2893	CABLE, Deck Lift	63	3-5835	POST, Anti Scalp (4)
31	3-2276	CLEVIS, Lift Cable	64	9-1328	SCREW, 3/8-16 x 1-1/4" Hex Head Cap Grade 5 (4)
32	9-1503	PIN, Hair, 3/32 x 1-1/2"			

48" CUTTING DECK SUB ASSEMBLY (5-7821)

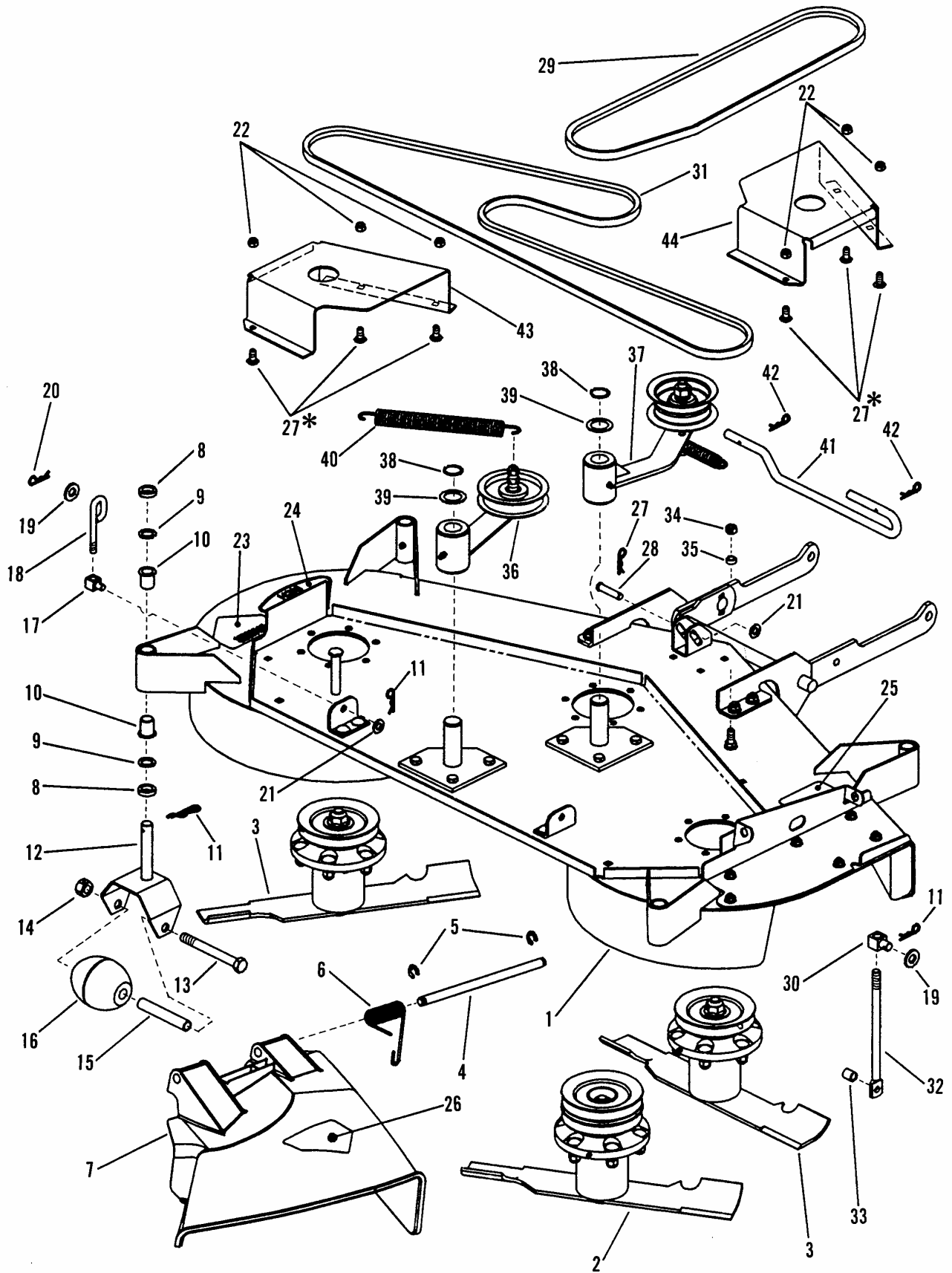


* NOTE: THE HEADS OF THESE FASTENERS ARE LOCATED INSIDE THE DECK.

48" CUTTING DECK SUB ASSEMBLY (5-7821)

ITEM	PART NO.	DESCRIPTION
1	1-3864	FITTING, 3/16" Serrated Grease (4)
2	9-0143	SCREW, 3/8-16 x 1-1/4" Hex Head Cap, Grade 5
3	2-9265	BOLT, Gage Wheel
4	4-6611	WELDMENT, Deck
5	4-6860	BRACKET, Rear Lift- 48" Deck (2)
6	4-6864	BRACKET, Front Hanger- R.H.
7	4-6865	BRACKET, Front Hanger- L.H.
8	4-6870	BRACKET, Front Hanger- 48" Deck
9	4-6929	STIFFENER, 48" Deck
10	4-6947	WELDMENT, Idler Pivot (2)
11	5-4142	ASSEMBLY, Front Lift Arm- 97 Model Year (Includes items 12 thru 16)
12	4-2602	WELDMENT, Front Lift Arm
13	3-5603	ARM, Lift
14	1-2063	WASHER, Cone 3/8" I.D.
15	9-0130	NUT, 3/8-16 Hex
16	9-1716	BOLT, 3/8-16 x 1-1/4", Grade 5
17	9-1601	NUT, 5/16-18 Hex Flange Lock, Grade 5 (8)
18	9-0613	NUT, 3/8-16 Hex Flange Lock (11)
19	9-0799	BOLT, 5/16-18 x 5/8" Short Neck Carriage, Grade 5 (8)
20	9-0850	BOLT, 3/8-16 x 3/4" Short Neck Carriage, Grade 2 (12)
21	9-1298	NUT, 5/16-18 Hex Nyloc
22	9-1299	NUT, 3/8-16 Hex Nyloc (8)
23	9-1304	SCREW, 3/8-16 x 1" Hex Head Cap, Grade 5 (6)
24	5-8119	BRACKET, Hinge

48" CUTTING DECK, BELTS, BRAKES



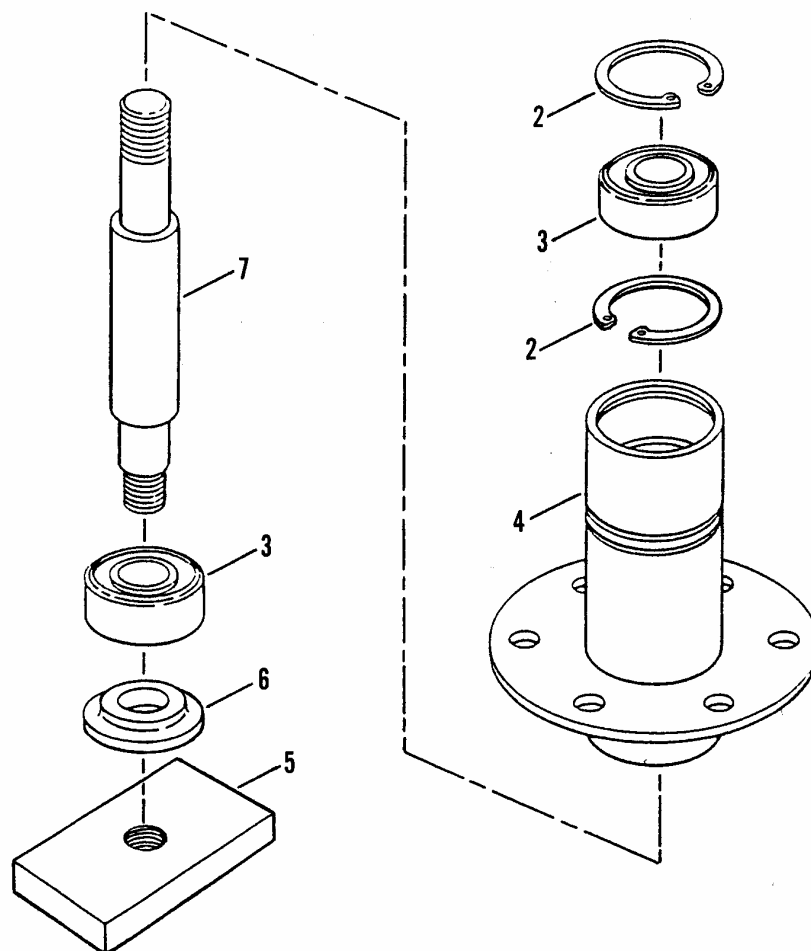
48" CUTTING DECK, BELTS, BRAKES

ITEM	PART NO.	DESCRIPTION
1	5-7821	ASSEMBLY, 48" Deck (see pages 22 & 23)
2	5-7921	ASSEMBLY, Drive Spindle (see page 31)
3	5-7920	ASSEMBLY, L.H./R.H. Spindle (2) (see page 31)
4	7-2044	PIN, Chute Hinge
5	1-4341	RING, Retaining (2)
6	3-5813	SPRING, Torsion (Side Chute)
7	2-9425	CHUTE, Side Discharge
8	7-6436	WASHER, Spacer (8)
9	9-1628	WASHER, 3/8" Flat (8)
10	4-6278	BEARING, 1/2 x 3/4" Plastic (8)
11	9-1503	PIN, 3/32 x 1-1/2" Hair (5)
12	4-6302	WELDMENT, Anti-Scalp Wheel (4)
13	9-0993	SCREW, 1/2-20 x 4-1/2" Hex Head Cap, Grade 5 (4)
14	9-0266	NUT, 1/2-20 Hex Center Lock, Grade 5 (4)
15	4-6301	SLEEVE, Caster Wheel (4)
16	7-9226	ROLLER, Low Density Polyethylene (4)
17	2-4607	SWIVEL, Brake Link (2)
18	4-6790	ROD, Rear Lift (2)
19	9-1587	WASHER, 1/2" Flat (3)
20	9-1594	PIN, 1/2" Self-Locking Cotter (4)
21	9-1514	WASHER, 3/8" Flat (4)
22	9-1298	NUT, 5/16-18 Hex Nyloc (6)
23	1-3010	DECAL, Warning- CPSC "Cut Finger" (2)
24	2-4431	DECAL, 48" Deck
25	4-6720	DECAL, Chute/Deflector Warning
26	2-6831	DECAL, CPSC Heavy Adhesive
27	9-1508	BOLT, 5/16-18 x 3/4" Short Neck Carriage, Grade 5 (6)
28	9-1977	PIN, 3/8 x 1-1/2" Clevis
29	4-6926	BELT, 50.65 HA (Electric Clutch)
30	2-6827	SWIVEL, Lift
31	2-8334	BELT, 94.46 HA
32	4-6873	ROD, Front Lift
33	2-3478	SPACER, Axle
34	9-1585	NUT, 3/8-16 Hex Center Lock
35	2-4180	SPACER, Tie Rod
36	5-7923	ASSEMBLY, Deck Idler (see pages 28 & 29)
37	5-7950	ASSEMBLY, Drive Idler Arm (see pages 28 & 29)
38	1-2709	RING, 1" External Retaining (2)
39	2-3747	BUSHING, 1" Machine (2)
40	2-9272	SPRING, Extension- Primary Idler
41	2-7471	PIN, Deck Hanger
42	9-1596	PIN, 3/32 x 1-1/2" Hair (2)
43	4-7086	COVER, L.H. Spindle
44	4-7087	COVER, R.H. Spindle

NOTE: THE HEADS OF THESE FASTENERS ON FACING PAGE ARE LOCATED INSIDE THE DECK.

SPINDLE ASSEMBLY - 42" CUTTING DECK

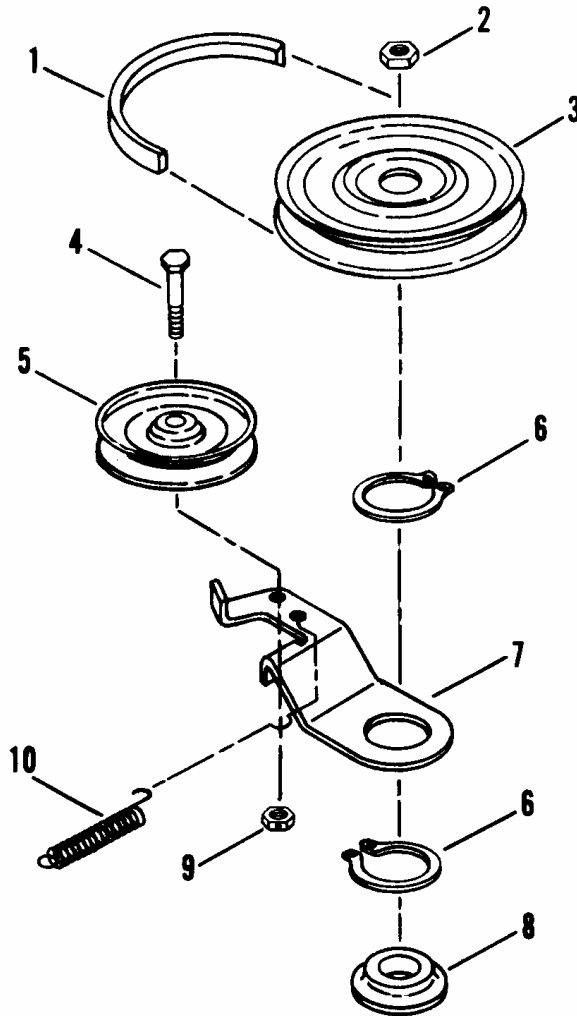
① ASSEMBLY



ITEM	PART NO.	DESCRIPTION
1	5-9723	ASSEMBLY, Spindle Housing, 42" Cutting Deck (Models: LT160H42FBV & LT160H42FBV2) (Includes items 2 thru
2	1-2491	RING, External Retaining 1-3/4" (2)
3	1-3313	BEARING, Spindle (2)
4	4-7917	HOUSING, Spindle
5	3-2294	HOLDER, Blade
6	1-4407	WASHER, Spindle
7	2-7668	SPINDLE (6.5" Long)

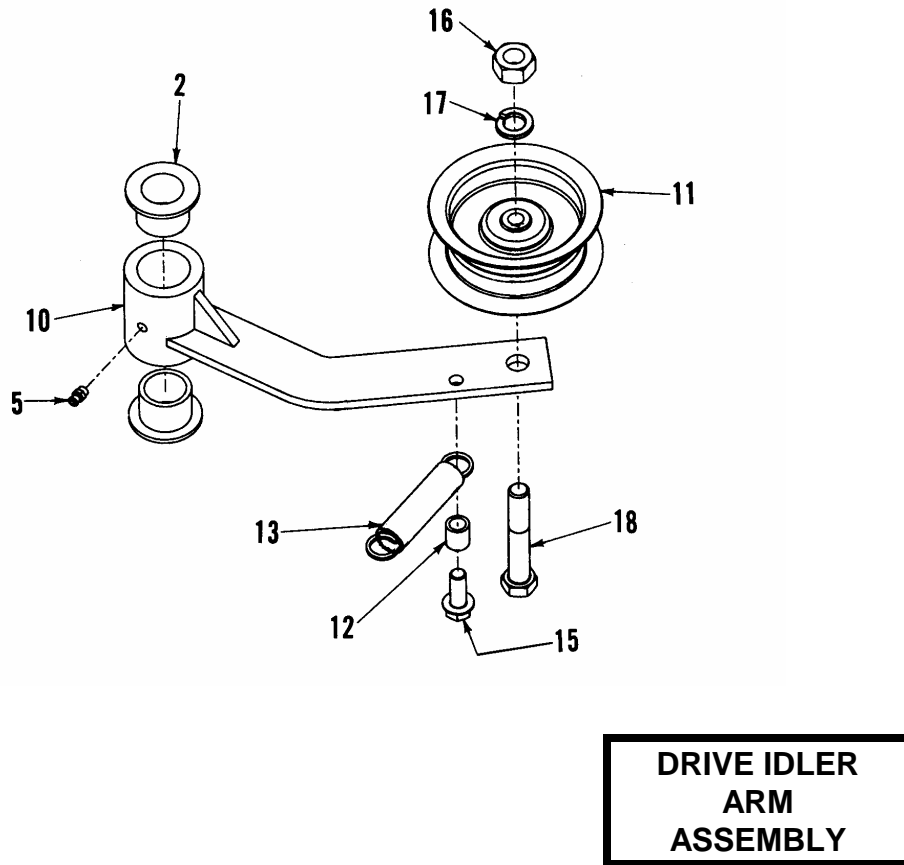
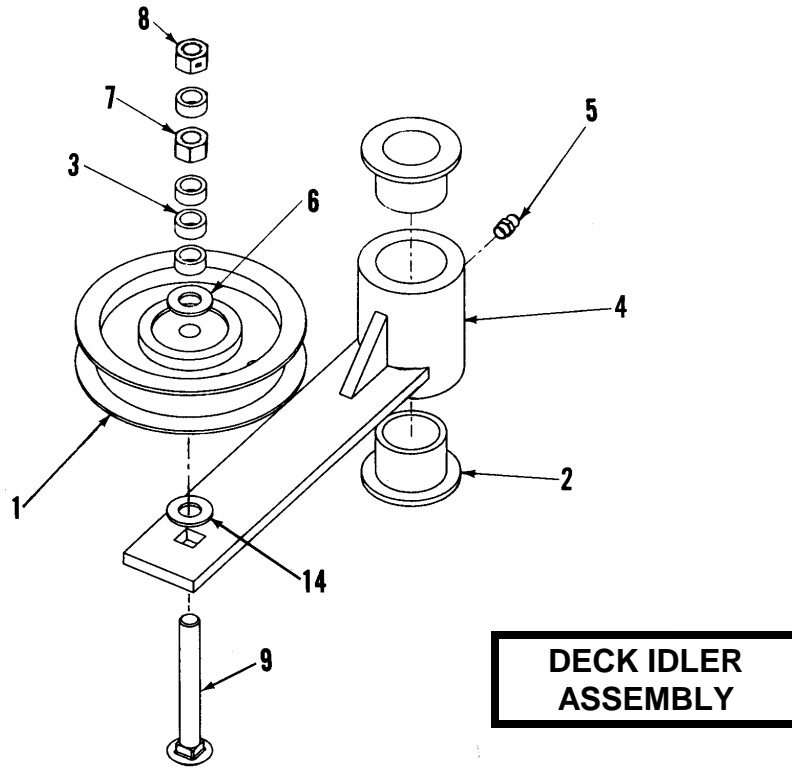
7)

BELT, BLADE BREAK - 42" CUTTING DECK



ITEM	PART NO.	DESCRIPTION
1	2-9205	BELT, Drive
2	1-0027	NUT, 3/4-16 Hex Jam
3	2-4863	PULLEY, Drive
4	9-1580	SCREW, 3/8-16 x 2" Hex Head Cap, Grade 5
5	1-8574	PULLEY, Idler
6	1-0740	RING, Retaining (2)
7	3-6222	ARM, Brake
8	1-4407	WASHER, Spindle
9	9-1585	NUT, 3/8-16 Hex Center Lock, Grade 5 or B
10	2-8941	SPRING, Idler

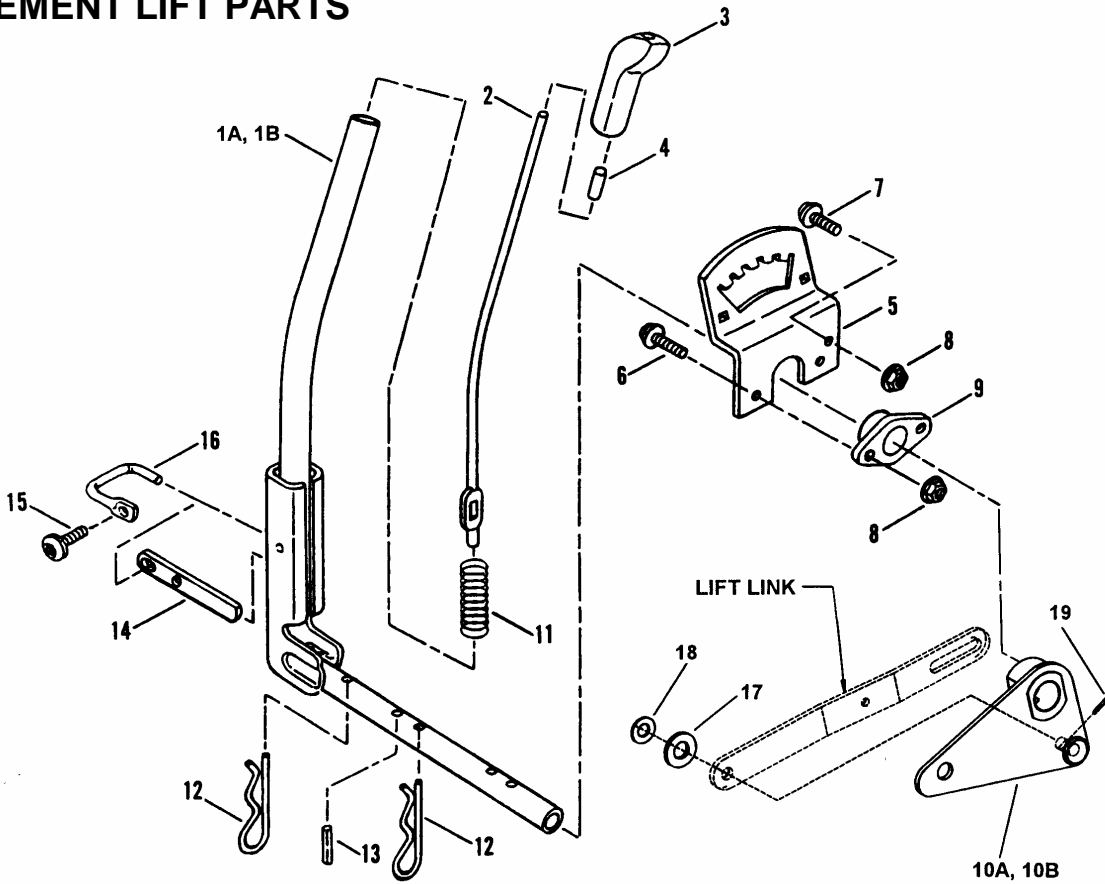
48" DECK IDLER ASSEMBLIES



48" DECK IDLER ASSEMBLIES

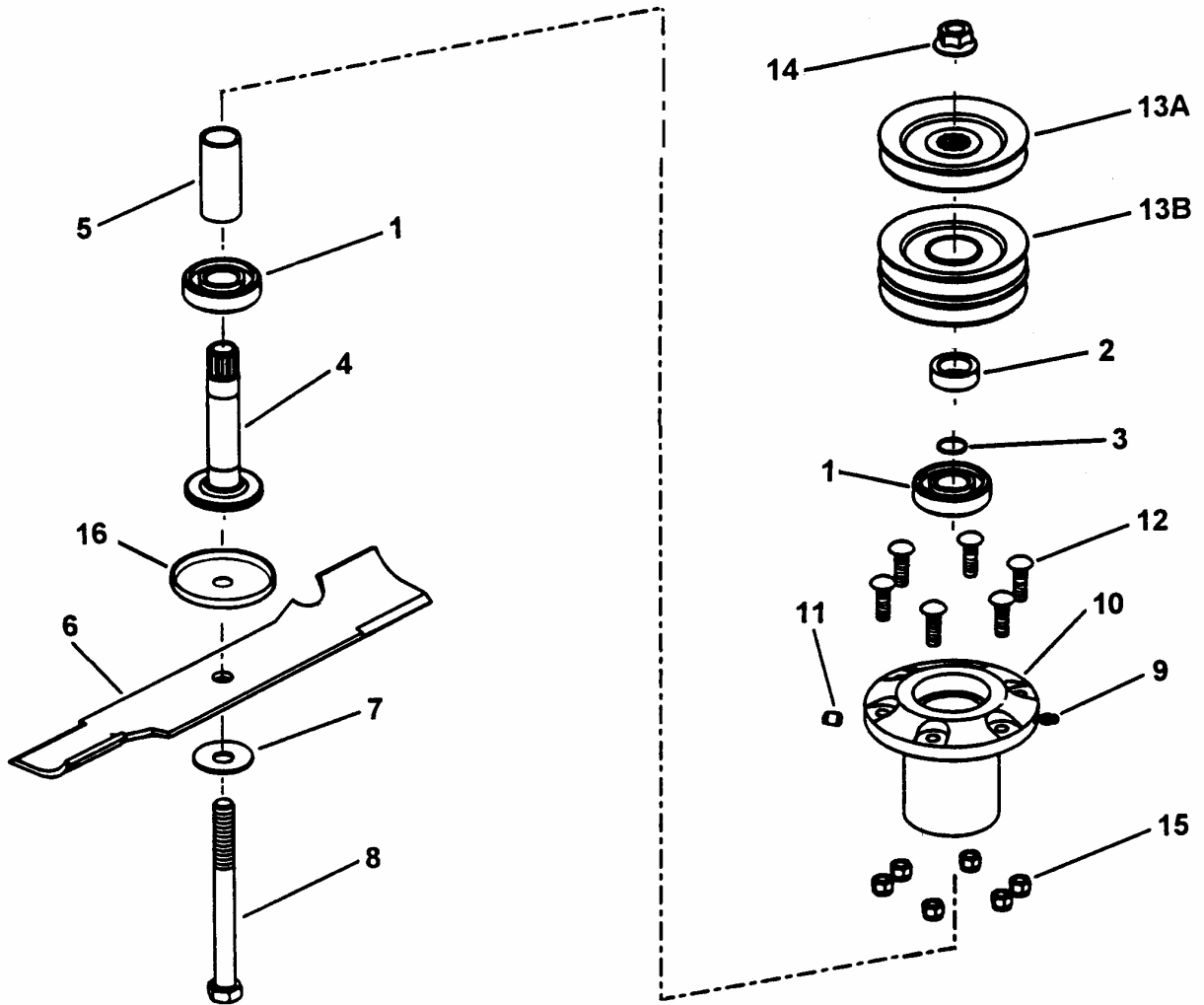
ITEM	PART NO.	DESCRIPTION
1	1-8574	FLAT IDLER, 4-1/8"
2	2-3556	BUSHING, Caster (4)
3	2-4180	SPACER, Tie Rod (4)
4	4-6949	WELDMENT, Idler Arm
5	7-6998	FITTING, Lube 1/4-28 Straight (2)
6	9-0122	WASHER, 3/8" Flat
7	9-1302	NUT, 3/8-16 Hex, Grade 5 or B
8	9-1585	NUT, 3/8-16 Hex Center Lock, Grade 5 or B (2)
9	9-1155	BOLT, 3/8-16 x 3", Round Head Square Neck Grade 5
10	4-6717	WELDMENT, Idler Arm
11	2-6310	PULLEY, Flat Idler- 3-1/4" O.D.
12	2-3478	SPACER
13	2-9134	SPRING, Extension
14	9-1514	WASHER, 3/8" SAE Flat
15	9-0324	SCREW, 3/8-16 x 1", Hex Washer Self-Tap
16	9-1316	NUT, 1/2-13 Hex, Grade 5 or B
17	9-1322	WASHER, 1/2" Split Lock
18	9-1821	SCREW, 1/2-13 x 3" Hex Head Cap

IMPLEMENT LIFT PARTS



ITEM	PART NO.	DESCRIPTION
1A	4-1655	LEVER, Implement Lift (Models: LT160H42FBV & LT160H42FBV2)
1B	5-8258	LEVER, Implement Lift (Model LT180H48FBV2) (not shown)
2	2-2565	ROD, Lift Lever
3	1-9363	KNOB, Lift Lever
4	1-4361	CAP, Lift Lever Rod
5	3-3449	QUADRANT, Lift Lever
6	9-1000	SCREW, 5/16-18 x 7/8" Truss Head (Torx) (2)
7	9-1001	SCREW, 5/16-18 x 5/8" Truss Head (Torx)
8	9-0585	NUT, 5/16-18 Hex Flange Lock, Grade 5 (2)
9	2-2567	PIVOT, Lift Lever
10A	4-1255	BELLCRANK, Lift Lever
10B	4-7137	BELLCRANK, Lift Lever (Model LT180H48FBV2)
11	2-2566	SPRING, Latch Detent
12	1-3844	PIN, Hair, 5/32 x 2-5/8" (2)
13	2-2895	PIN, Dowel, 1/4 x 1-1/8"
14	2-2568	DETENT, Latch
15	9-0999	SCREW, 1/4-20 x 5/8" Truss Head (Torx)
16	2-4742	LATCH, Pivot
17	9-1587	WASHER, 1/2" Flat
18	9-1514	WASHER, 3/8" Flat
19	9-1597	PIN, 3/32 x 3/4" Cotter

SPINDLE ASSEMBLIES – 48” CUTTING DECK

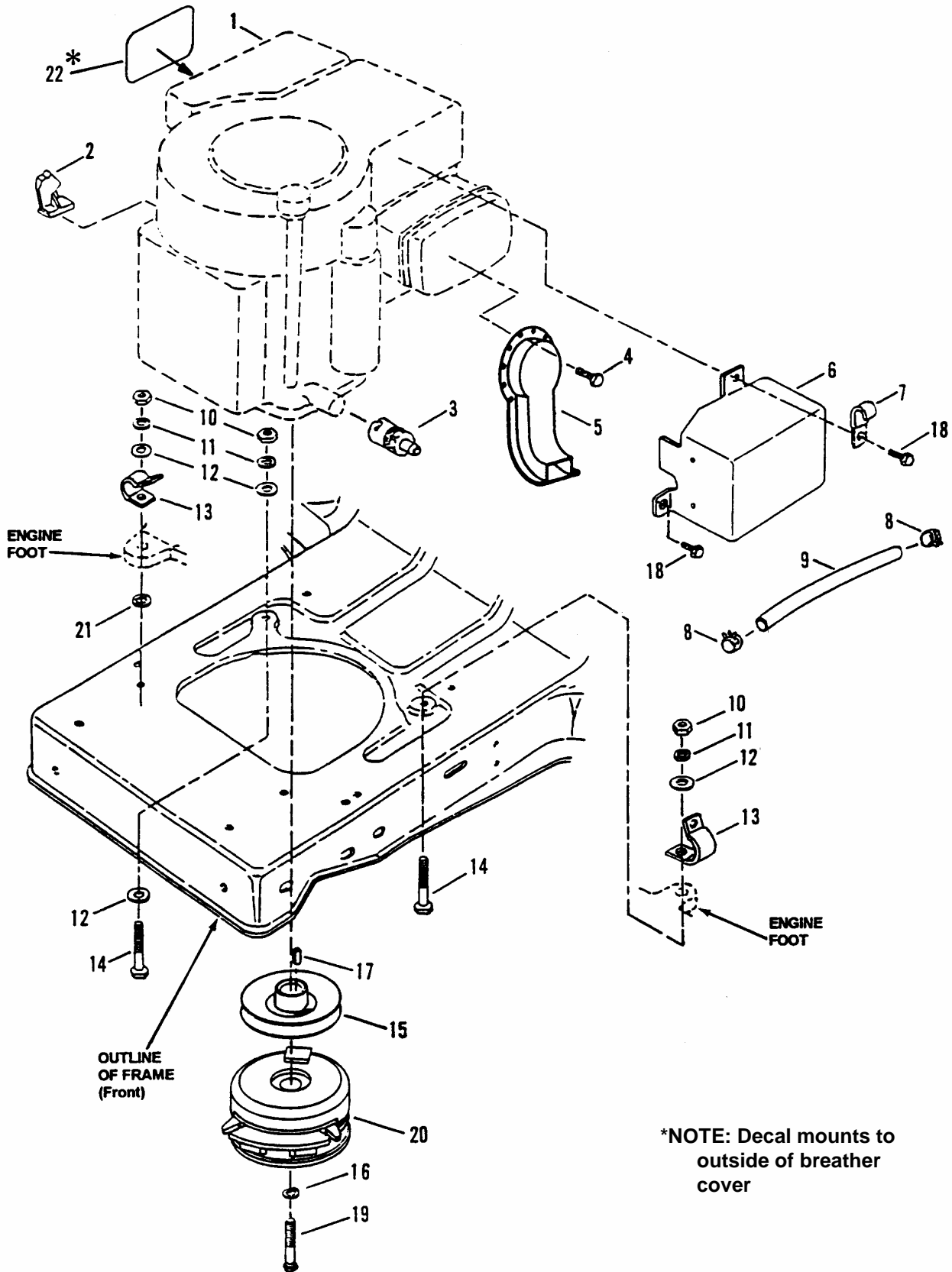


ITEM	PART NO.	DESCRIPTION
--	5-4011	ASSEMBLY, Spindle (contains indented items below) (3)
1	2-9422	BEARING, Sealed (2)
2	2-9270	WASHER, Spindle
3	2-9274	SNAP-RING, Spindle Shaft
4	2-9253	SHAFT, Spindle
5	2-9254	SPACER, Bearing
6	2-9247	BLADE, 16-1/2" (48" Deck)
7	1-6440	WASHER, Beveled
8	9-1980	BOLT, 5/8-18 x 6-5/8" Hex Head, Grade 5
9	2-9275	FITTING, Lube
10	2-9252	HOUSING, Cutter
11	2-9384	VENT, Spindle
12	2-9302	BOLT, 3/8-16 x 1-1/4" Rib Necked (6)
13A	4-6917	PULLEY, Spindle (48" Deck LH & RH)
13B	4-6794	PULLEY, Spindle (48" Deck/Drive)
14	9-1736	NUT, 5/8-18 Hex Flange Lock, Grade 5
15	9-1299	NUT, 3/8-16 Hex Nyloc (6)
16	7-2077	CUP, Spindle Cover

NOTE: Part # 5-4017 (Spindle Housing sub-assembly) contains one of item 10 & six of item 12.

ENGINE COMPONENTS

(Model LT160H42FBV)



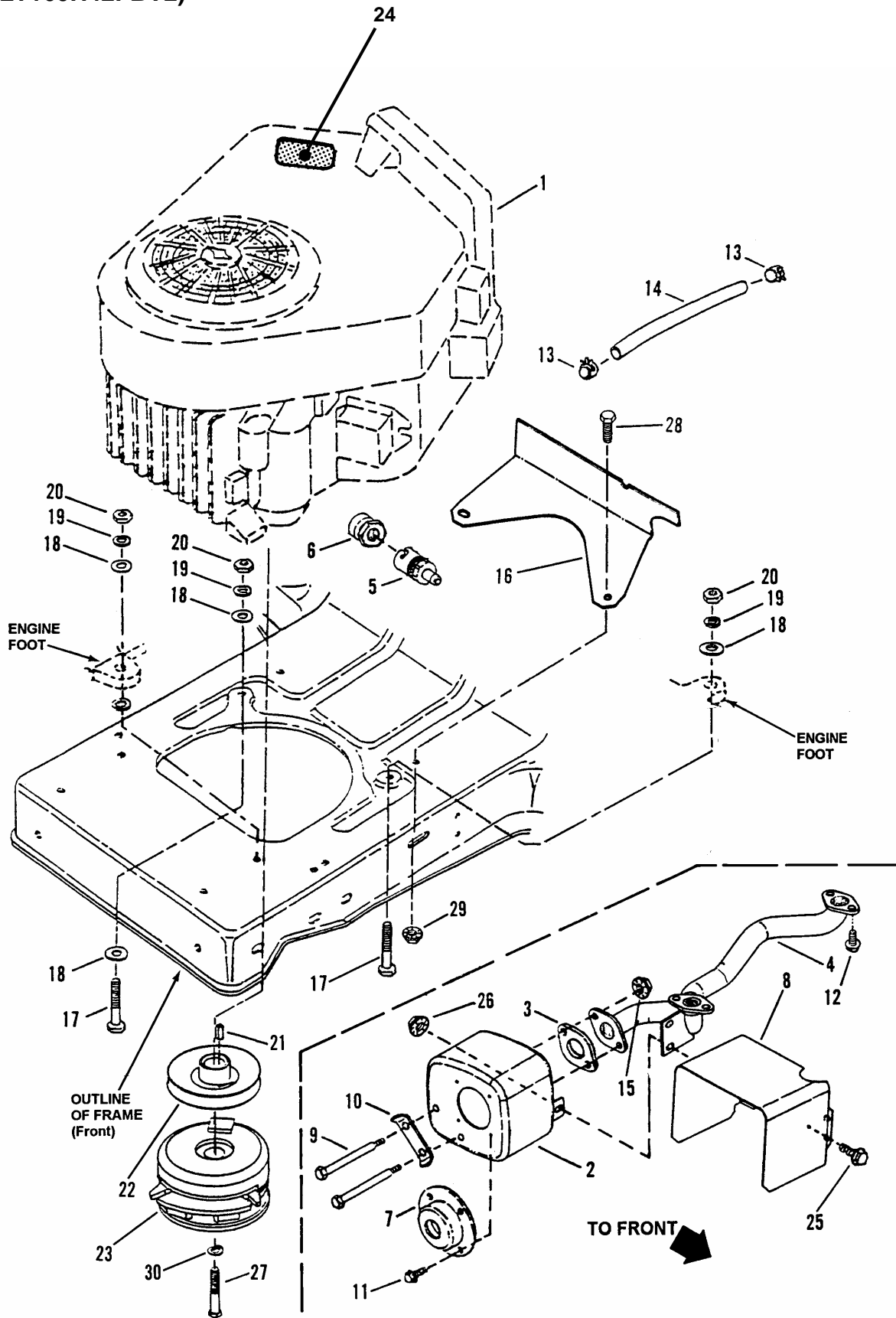
ENGINE COMPONENTS (Model: LT160H42FBV)

ITEM	PART NO.	DESCRIPTION
1	**	ENGINE, B. & S. 16.0 HP OHV, Model 28Q777, Type 0672, Trim E1 (Model: LT160H42FBV)
2	2-5079	CLIP, Speed
3	2-7972	ASSEMBLY, Oil Valve
4	9-1581	SCREW, #8-18 x 1/2" Hex Head, Self-Tapping (3)
5	4-1537	EXTENSION, Muffler
6	4-1269	HEAT SHIELD, Muffler
7	2-6482	CLIP, "J" Type
8	1-2222	CLAMP, Fuel Line (2)
9	2-9982	LINE, Fuel, 14" Long
10	9-1511	NUT, 5/16-18 Hex, Grade 5 or B (4)
11	9-1315	WASHER, 5/16 Split Lock (4)
12	9-1296	WASHER, 5/16 Flat (5)
13	1-5861	CLIP, Wiring Harness (2)
14	9-0669	SCREW, 5/16-18 x 1-3/4" Hex Head Cap, Grade 5 (2)
15	7-2810	PULLEY, Traction Drive
16	9-1301	WASHER, 7/16 Split Lock
17	1-6755	KEY, 1/4 Square x 3/4"
18	9-1579	BOLT, 1/4-20 x 1/2" Hex Flange Lock, Grade 5 (2)
19	9-1703	SCREW, 7/16-20 x 2-1/2" Hex Head Cap, Special, Grade 5
20	5-3740	CLUTCH/BRAKE
21	9-0391	WASHER, 5/16 Internal Tooth Lock
22	7-3231	DECAL, Warning Speed Setting

**PURCHASE ENGINE & ENGINE PARTS
OTHER THAN THOSE LISTED, FROM
ENGINE SERVICE OUTLETS.**

ENGINE COMPONENTS

(Model LT160H42FBV2)



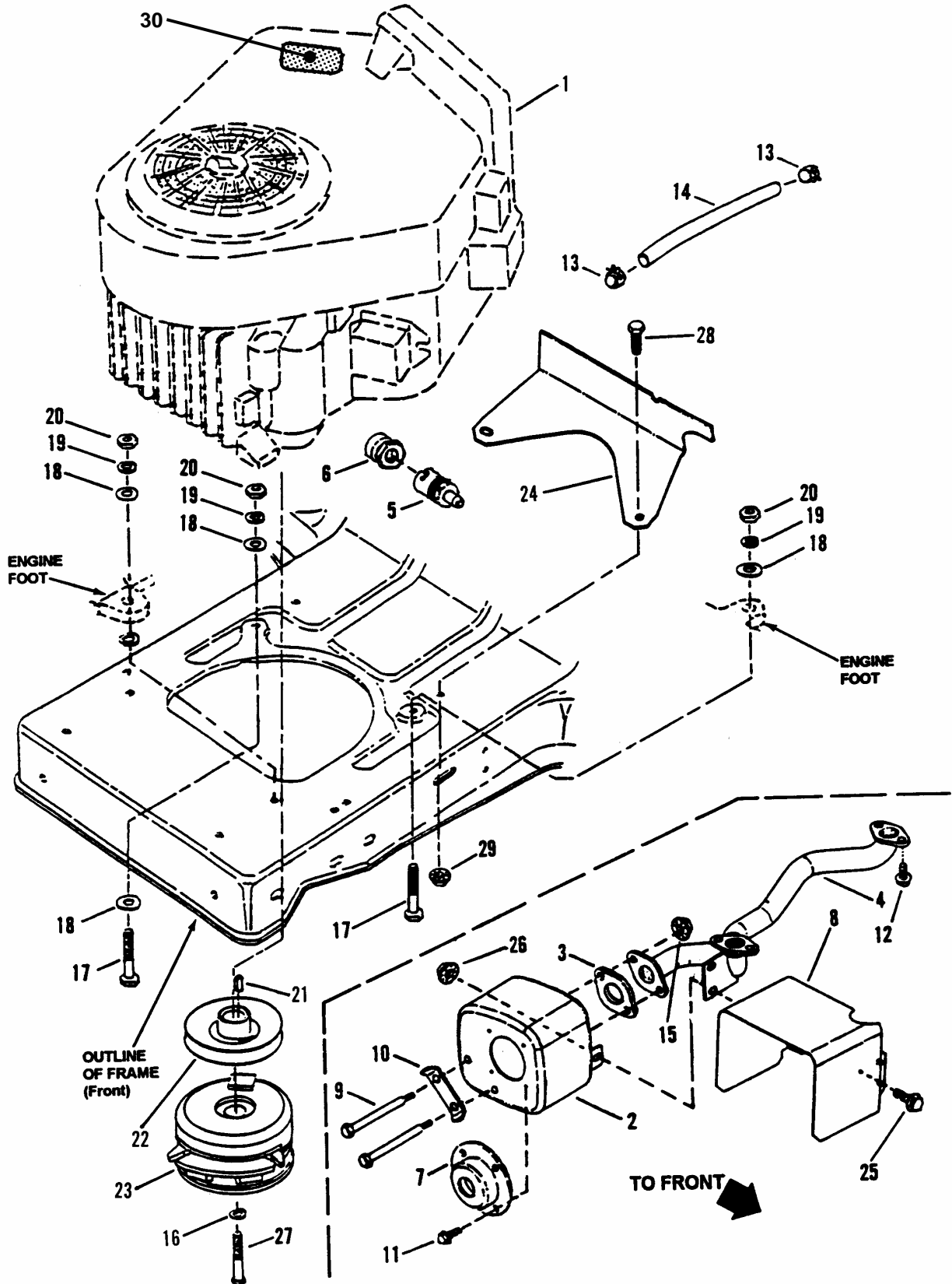
ENGINE COMPONENTS (Model: LT160H42FBV2)

ITEM	PART NO.	DESCRIPTION
1	**	ENGINE, B. & S., 16.0 HP V-Twin, Model 303777, Type 1150, Trim E1
2	2-4241	MUFFLER
3	1-4509	GASKET, Muffler/Exhaust
4	4-1742	MANIFOLD, Exhaust
5	2-7972	ASSEMBLY, Oil Valve Drain
6	2-2486	EXTENSION, Oil Drain
7	2-6778	DEFLECTOR, Exhaust
8	3-4767	SHIELD, Muffler Heat
9	2-4161	BOLT, 5/16-18 x 3-1/2" Shoulder, Hex Head (2)
10	2-4566	LOCK, Screw
11	9-1581	SCREW, #8-18 x 1/2" Self-Tapping (4)
12	9-0858	SCREW, 5/16-18 x 1/2" Hex Washer Head, Self Tapping (4)
13	1-2222	CLAMP, Fuel Line (2)
14	2-9982	LINE, Fuel, 14" Long
15	9-1601	NUT, 5/16-18 Hex Flanged Lock, Grade 5
16	3-4762	SHIELD, Heat
17	9-0669	SCREW, 5/16-18 x 1-3/4" Hex Head Cap, Grade 5 (2)
18	9-1296	WASHER, 5/16 Flat Grade 5 (4)
19	9-1315	WASHER, 5/16 Split Lock (2)
20	9-1511	NUT, 5/16-18 Hex Grade 5 or B (2)
21	1-6755	KEY, 1/4 x 1/4 x 3/4" Square
22	7-2810	PULLEY, Traction Drive
23	5-3740	CLUTCH/BRAKE
24	7-3231	DECAL, Warning Speed Setting
25	2-7172	SCREW, 1/4-20 x 5/8" Hex Head Cap, Grade 5 (2)
26	9-1584	NUT, 1/4 -20 Hex Flanged Lock, Grade 5 (2)
27	9-1703	SCREW, 7/16-20 x 2-1/2 Hex Head Cap, Special, Grade 5
28	9-0209	SCREW, 5/16-18 x 1" Hex Head Cap, Grade 2 (2)
29	9-0585	NUT, 5/16-18 Hex Flange Lock, Grade 5 (2)
30	9-1301	WASHER, 7/16 Split Lock

****PURCHASE ENGINE & ENGINE PARTS
OTHER THAN THOSE LISTED, FROM
ENGINE SERVICE OUTLETS.**

ENGINE COMPONENTS

(Model LT180H48FBV2)

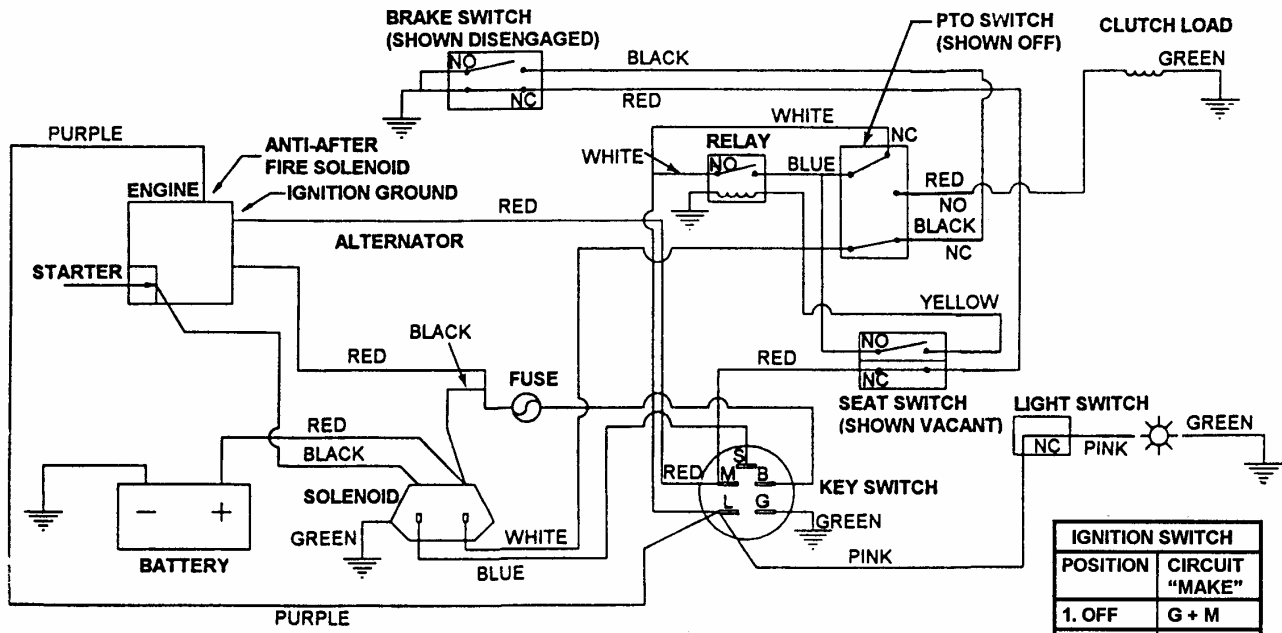


ENGINE COMPONENTS (Model: LT180H48FBV2)

ITEM	PART NO.	DESCRIPTION
1	**	ENGINE, B. & S., 18.0 HP V-Twin, Model 350777, Type 1143, Trim E1
2	2-4241	MUFFLER
3	1-4509	GASKET, Muffler/Exhaust
4	4-1742	MANIFOLD, Exhaust
5	2-7972	ASSEMBLY, Oil Valve Drain
6	2-2486	EXTENSION, Oil Drain
7	2-6778	DEFLECTOR, Exhaust
8	3-4767	SHIELD, Muffler Heat
9	2-4161	BOLT, 5/16-18 x 3-1/2" Shoulder, Hex Head (2)
10	2-4566	LOCK, Screw
11	9-1581	SCREW, #8-18 x 1/2" Self-Tapping (4)
12	9-0858	SCREW, 5/16-18 x 1/2" Hex Washer Head, Self Tapping (4)
13	1-2222	CLAMP, Fuel Line (2)
14	2-9982	LINE, Fuel, 14" Long
15	9-1601	NUT, 5/16-18 Hex Flanged Lock, Grade 5
16	9-1301	WASHER, 7/16" Split Lock
17	9-0669	SCREW, 5/16-18 x 1-3/4" Hex Head Cap, Grade 5 (2)
18	9-1296	WASHER, 5/16 Flat Grade 5 (4)
19	9-1315	WASHER, 5/16 Split Lock (2)
20	9-1511	NUT, 5/16-18 Hex Grade 5 or B (2)
21	1-6755	KEY, 1/4 x 1/4 x 3/4" Square
22	2-8584	PULLEY, Traction Drive
23	5-3740	CLUTCH/BRAKE
24	3-4762	SHIELD, Heat
25	2-7172	SCREW, 1/4-20 x 5/8" Hex Head Cap, Grade 5 (2)
26	9-1584	NUT, 1/4 -20 Hex Flanged Lock, Grade 5 (2)
27	9-1703	SCREW, 7/16-20 x 2-1/2 Hex Head Cap, Special, Grade 5
28	9-0209	SCREW, 5/16-18 x 1" Hex Head Cap, Grade 2 (2)
29	9-0585	NUT, 5/16-18 Hex Flange Lock, Grade 5 (2)
30	7-3231	DECAL, Warning Speed Setting

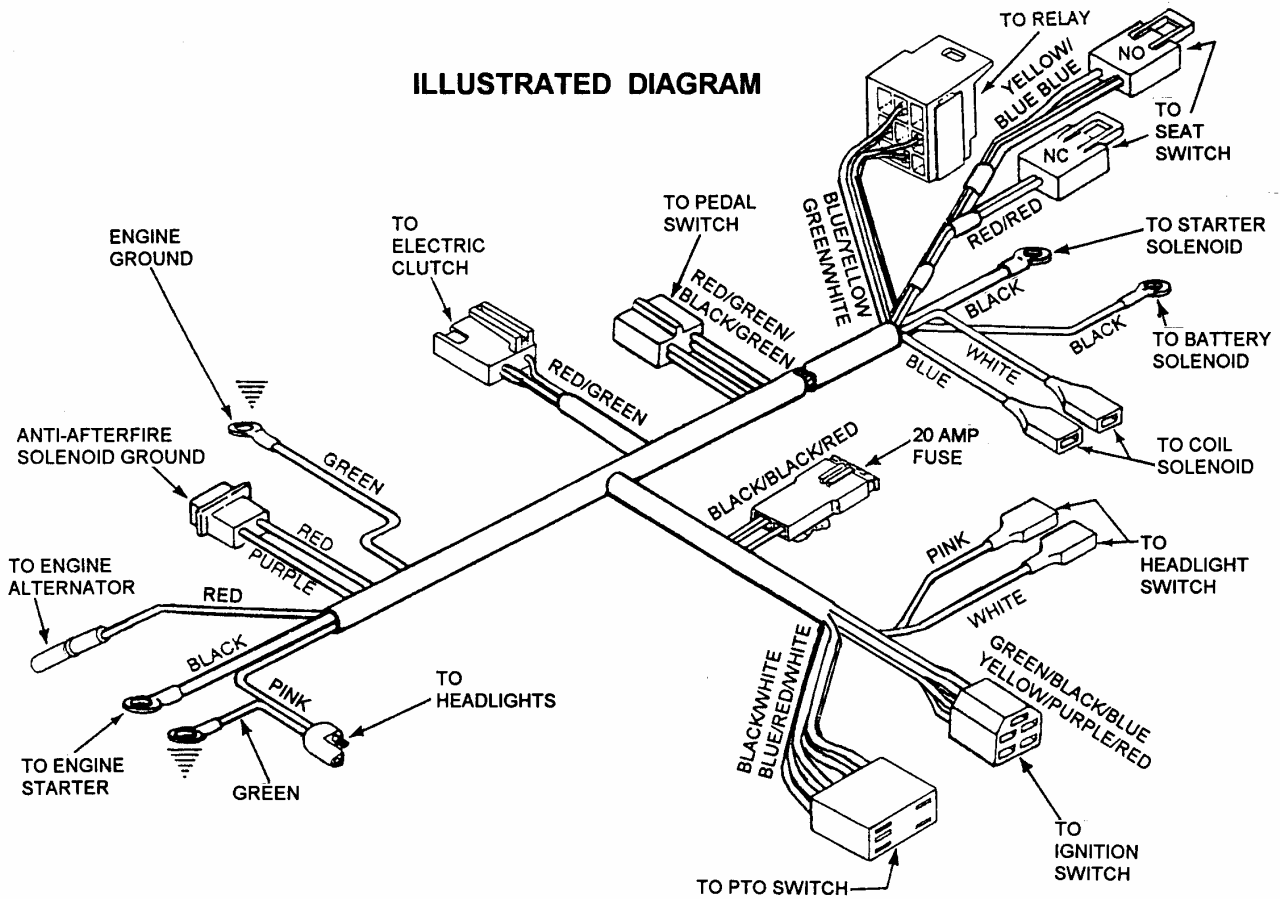
****PURCHASE ENGINE & ENGINE PARTS
OTHER THAN THOSE LISTED, FROM
ENGINE SERVICE OUTLETS.**

ELECTRICAL - (Model: LT160H42FBV)



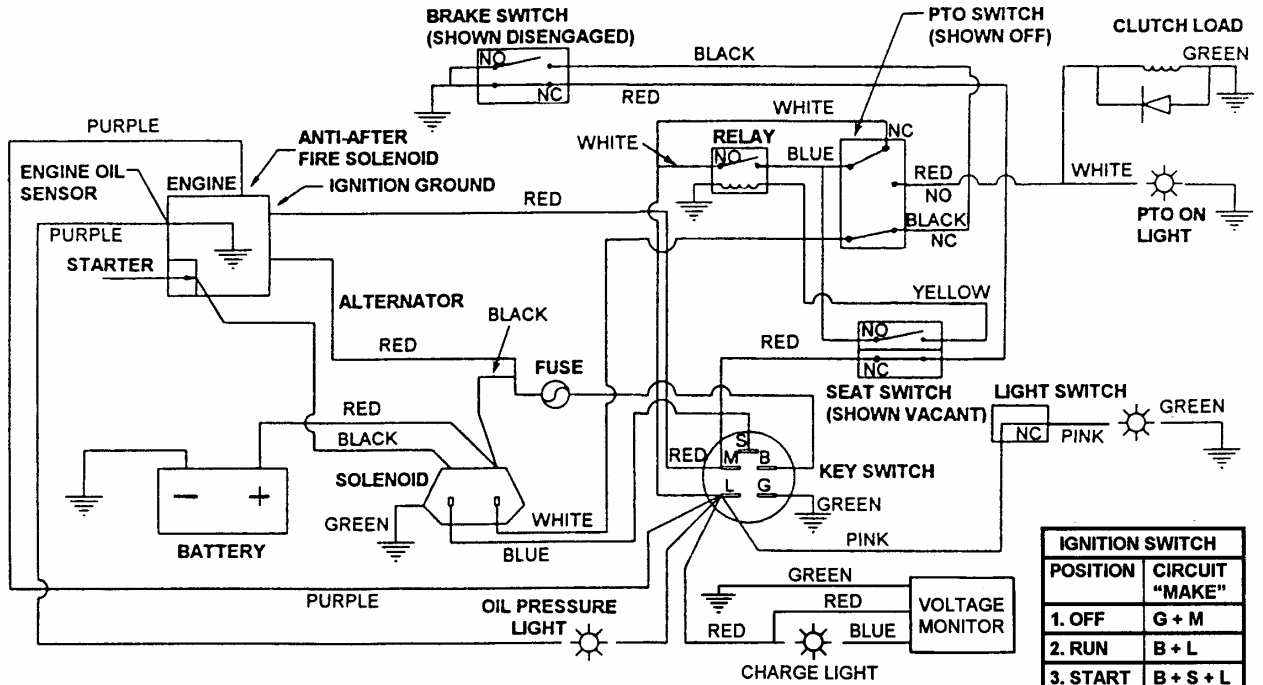
IGNITION SWITCH	
POSITION	CIRCUIT "MAKE"
1. OFF	G + M
2. RUN	B + L
3. START	B + S + L

ILLUSTRATED DIAGRAM



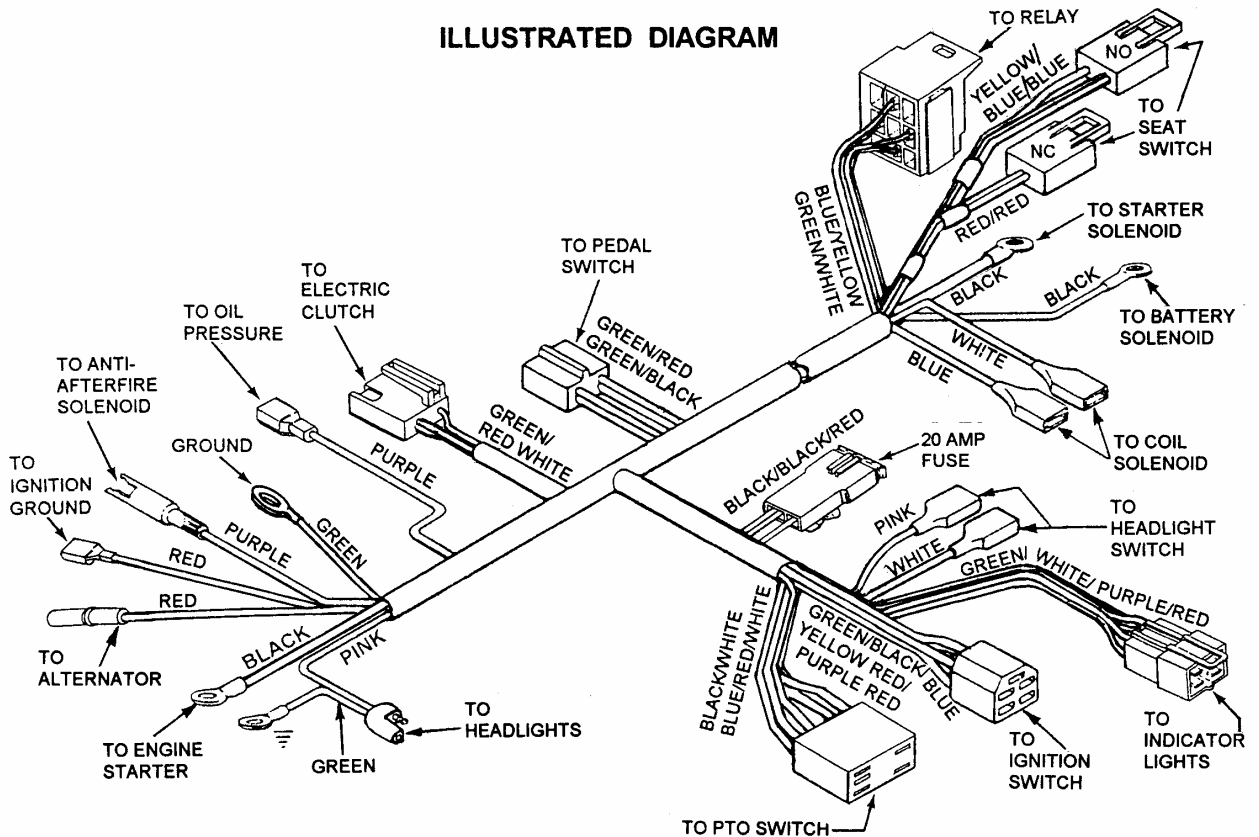
ELECTRICAL

(Models: LT160H42FBV2 & LT180H48FBV2)

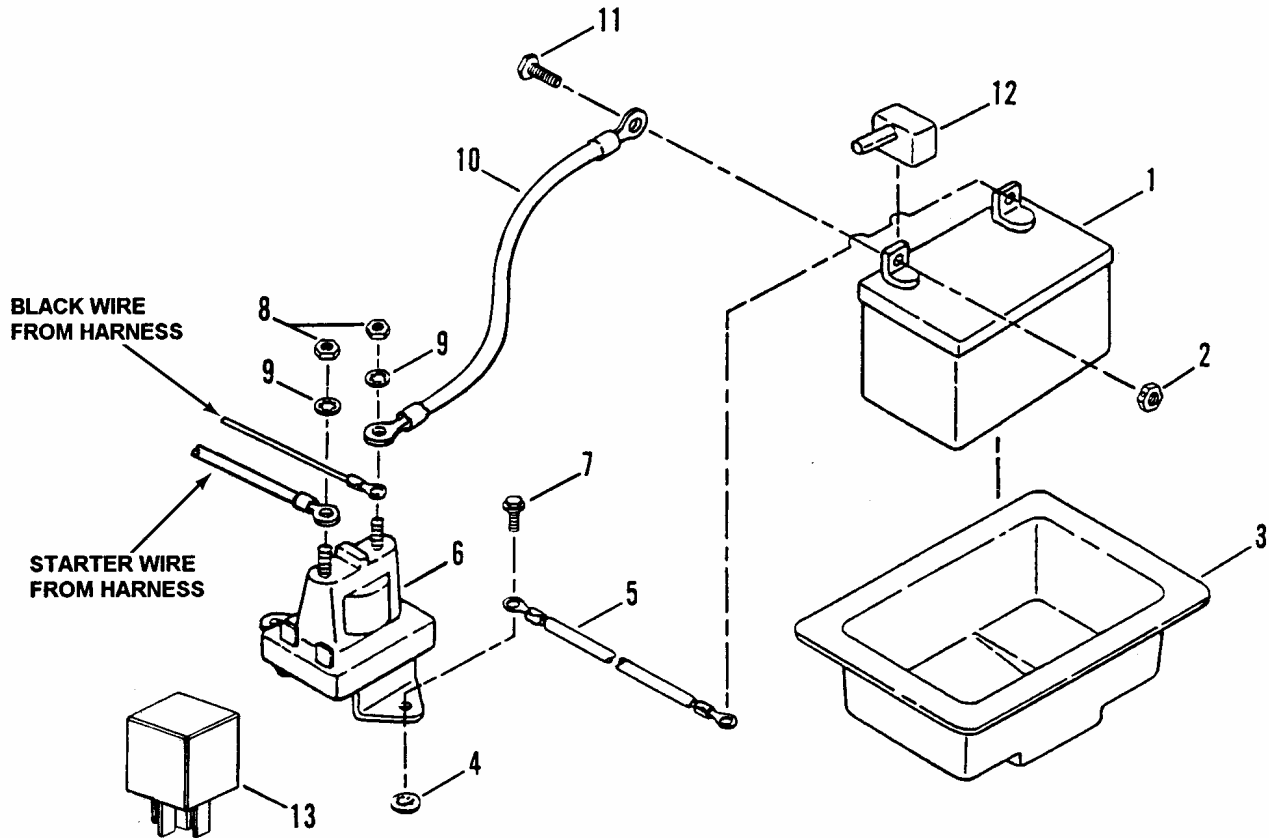


SCHEMATIC - WIRING DIAGRAM Part No. 2-8520
(MODELS: LT160H42FBV2 & LT180H48FBV2)

ILLUSTRATED DIAGRAM

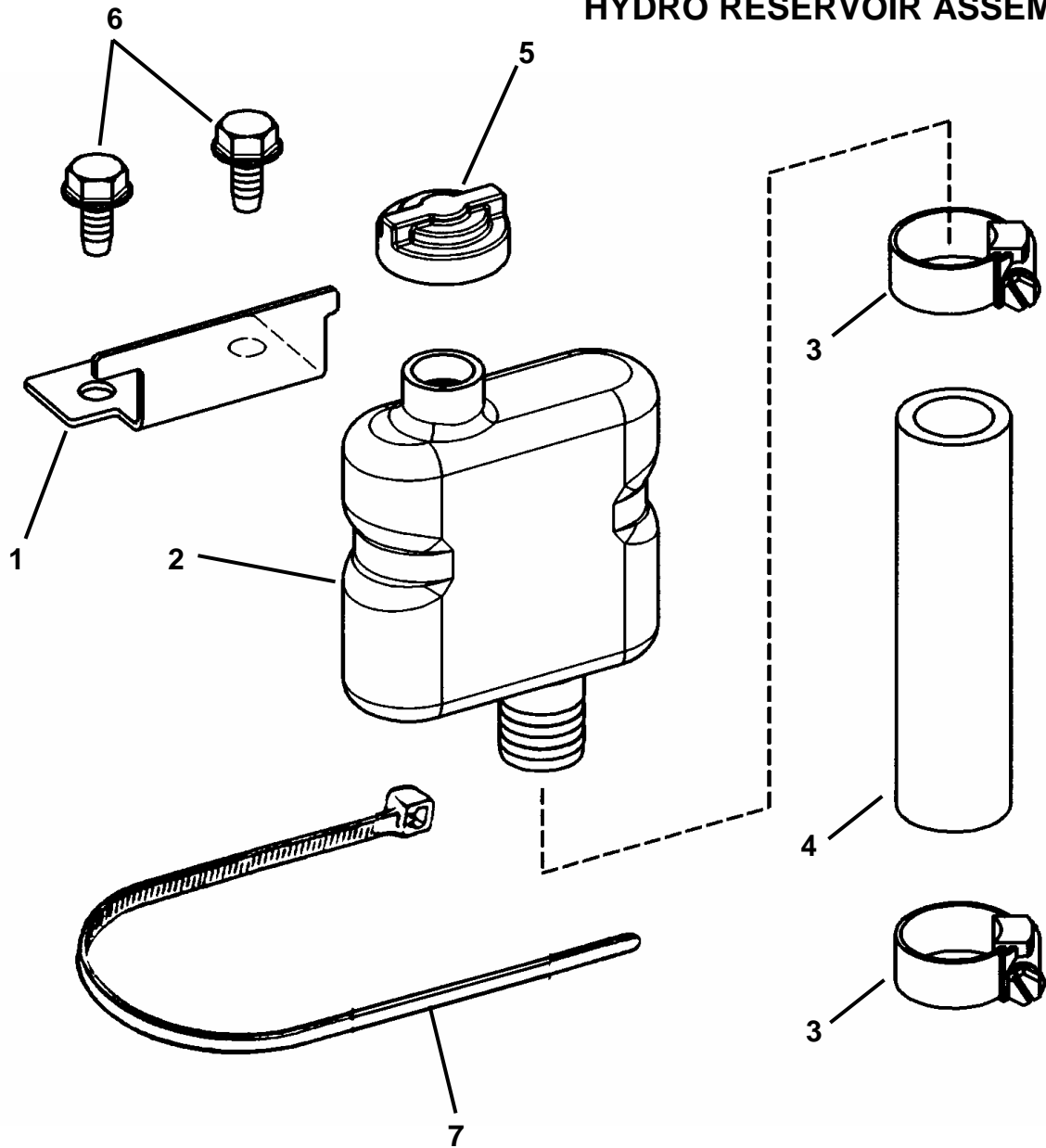


ELECTRICAL COMPONENTS



ITEM	PART NO.	DESCRIPTION
1	6-0618	KIT, Battery (Includes Decal P.N. 1-6134 & Battery Without Acid)
2	9-0372	NUT, 1/4-20 Hex Center Lock, Grade 5 or B (2)
3	1-7853	TRAY, Battery
4	1-2485	RETAINER, Screw
5	2-6414	CABLE, Ground (Black)
6	7-5622	SOLENOID (Was 18604)
7	9-0539	SCREW, 1/4-20 x 1/2" Self-Tapping (2)
8	9-0977	NUT, 1/4-20 Hex Jam (2)
9	9-1314	WASHER, 1/4 Internal Tooth Lock (2)
10	1-4476	CABLE, Positive (Red)
11	2-7172	SCREW, 1/4-20 x 5/8" Hex Head Cap, Grade 5 (2)
12	1-2444	COVER, Positive Terminal
13	2-8570	RELAY

HYDRO RESERVOIR ASSEMBLY



ITEM	PART NO.	DESCRIPTION
1	7-2739	BRACKET, Reservoir Mounting
2	7-2736	RESERVOIR, Expansion
3	1-6130	CLAMP, 13/16" (2)
4	7-2901	HOSE, Hydraulic 4-1/2" Long
5	9-1431	VALVE, Vent
6	9-0858	BOLT, 5/16-18 x 1/2" Hex Washer Self-Tap (2)
7	7-2914	CABLE TIE, 9"

DECALS

CLUTCH/BRAKE PEDAL
LIFT LEVER

PARKING BRAKE LATCH

WARNING

BEFORE MOWING:

- READ OPERATOR'S MANUAL AND OTHER INSTRUCTIONS FURNISHED WITH THIS MACHINE AND ATTACHMENTS.
- KNOW LOCATION AND FUNCTION OF ALL CONTROLS. PRACTICE WITH BLADE OFF TO LEARN CONTROLS AND CHECK FOR PROPER OPERATION.
- MAKE SURE THAT SHIELDS, GUARDS, SWITCHES, AND OTHER SAFETY DEVICES ARE IN PROPER POSITION AND FUNCTIONAL.
- CLEAR MOWING AREA OF WIRE, ROCKS, AND OTHER OBJECTS THAT COULD CAUSE INJURY IF THROWN BY BLADE.

PROTECT CHILDREN AND OTHER PEOPLE:

- DO NOT ALLOW CHILDREN (PRE-TEENAGERS) ON MACHINE OR IN MIND WHEN OPERATING. KEEP OTHERS SAFELY AWAY FROM OPERATING AREA.
- TEENAGERS AND OTHER INEXPERIENCED OPERATORS SHOULD BE CAREFULLY INSTRUCTED AND CLOSELY SUPERVISED.
- LOOK DOWN AND BEHIND BEFORE AND WHILE BACKING.
- NEVER CARRY CHILDREN, EVEN WITH BLADE(S) OFF.

PREVENT TIP-OVER ACCIDENTS:

- DO NOT MOW ON SLOPES OR ANY AREA WHERE STABILITY OR TRACTION IS IN DOUBT. IF UNCERTAIN, DRIVE OVER AREA FIRST WITH BLADE OFF.
- AVOID SUDDEN TURNS.

TO STOP MACHINE:
DEPRESS CLUTCH/BRAKE PEDAL.

TO SET PARKING BRAKE:
DEPRESS CLUTCH/BRAKE PEDAL, RAISE PARKING LATCH AND HOLD WHILE RELEASING PEDAL.

TO START ENGINE:
CLUTCH/BRAKE PEDAL MUST BE FULLY DEPRESSED OR PARK BRAKE POSITION AND PTO SWITCH MUST BE IN OFF POSITION.

TO START DRIVING:
RELEASE PARKING BRAKE, SLOWLY MOVE SPEED SELECTOR FORWARD FOR FORWARD TRAVEL AND BACKWARD FOR REVERSE TRAVEL.

TO CHANGE DRIVING SPEEDS:
SHIFT SPEED SELECTOR WITHOUT USING PEDAL.

TO AVOID CONTACT WITH ROTATING BLADE:

- STOP BLADE BEFORE PUTTING FOOT ON GROUND OR LEAVING SEAT.
- BE SURE BLADE HAS STOPPED BEFORE ATTEMPTING TO UNCLASP DISCHARGE OR BEFORE PLACING HANDS OR FEET NEAR BOTTOM OF BLADE HOUSING.
- NEVER START BLADE UNLESS PROPERLY SEATED ON MACHINE.
- STOP BLADE, STOP ENGINE, AND REMOVE KEY WHEN LEAVING MACHINE.

TO SET CUTTING HEIGHT:
DEPRESS THUMB BUTTON ON LIFT LEVER, MOVE FORWARD TO LOWER. PULL BACK TO RAISE. RELEASE BUTTON.

TO START BLADES:
PULL PTO SWITCH OUT.

TO STOP BLADES:
PUSH PTO SWITCH IN.

TO MOW PROPERLY:
INCREASE ENGINE SPEED AND/OR DECREASE DRIVING SPEED UNTIL CUT IS SMOOTH AND ENGINE IS NOT UNDER HEAVY STRAIN.

WARNING

GUARD OR ENTIRE GRASS CATCHER MUST BE INSTALLED BEFORE OPERATING MOWER

46720

WARNING

DO NOT CHANGE ENGINE GOVERNOR SPEED SETTINGS OR OVERSPEED ENGINE

73231

ROLL RELEASE

ROLL OUT DRIVE IN

CAUTION

INSTALL BATTERY WITH TERMINALS FORWARD

26415

MODEL CERTIFIED BY INDEPENDENT LABORATORY PASSES ANSI B71.1-1998 SAFETY STANDARDS

78820

SEALED RESERVOIR DO NOT OPEN

44767



ITEM	PART NO.	DESCRIPTION
1	7-2755	DECAL, Instruction Frame Top
2	4-6720	DECAL, Chute/Deflector
3	7-3231	DECAL, Warning Speed Setting
4	7-2749	DECAL, Roll Release
5	4-4767	DECAL, Hydro Reservoir
6	2-6415	DECAL, Caution Battery Location
7	7-1544	LOGO, Medallion
8	7-2920	DECAL, Certification, B71.1-1998



ITEM	PART NO.	DESCRIPTION
9	2-8562	DECAL, Console w/Headlights
10	2-8563	DECAL, Console Indicators (not shown, outline same as item 9)
11	2-4910	DECAL, 42" Deck
12	2-4431	DECAL, 48" Deck (not shown, similar to item 11)
13	1-3010	DECAL, Danger CPSC
14	2-6831	DECAL, Danger (not shown, same as item 13 but with heavy adhesive)
15	1-6576	DECAL, Shift Cover

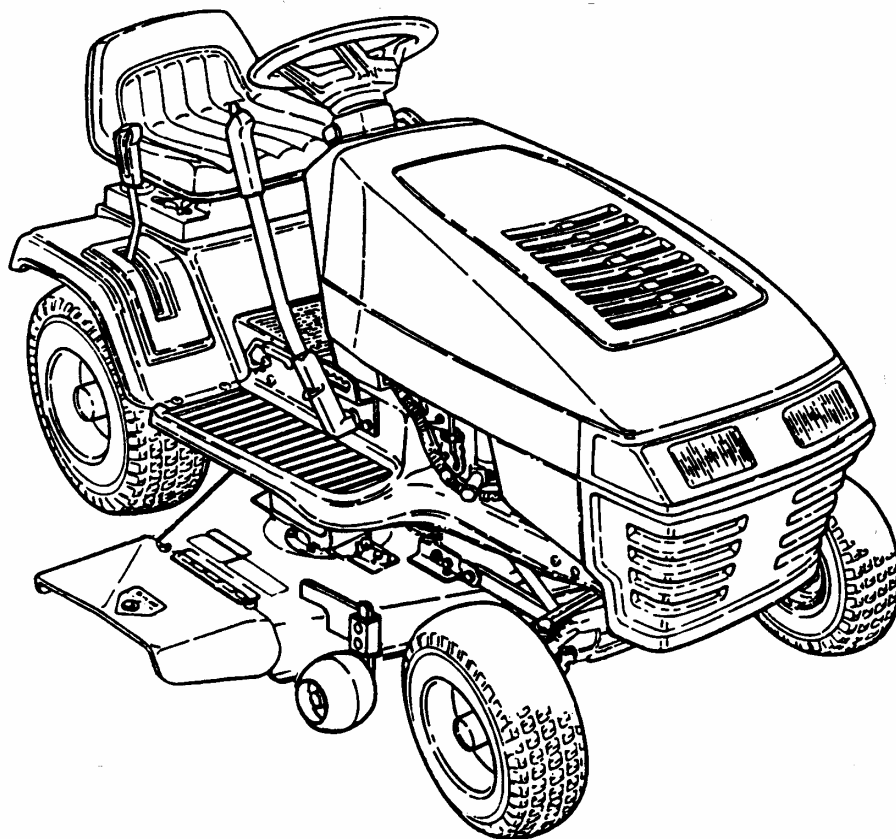
Parts Manual for

SNAPPER®

LAWN TRACTORS ELECTRIC CLUTCH HYDRO DRIVE SERIES F

MODELS

LT160H42FBV
LT160H42FBV2
LT180H48FBV2



IT IS THE POLICY OF SNAPPER TO IMPROVE ITS PRODUCTS WHENEVER IT IS POSSIBLE AND PRACTICAL TO DO SO. WE RESERVE THE RIGHT TO MAKE CHANGES OR ADD IMPROVEMENTS AT ANY TIME WITHOUT INCURRING ANY OBLIGATION TO MAKE SUCH CHANGES ON PRODUCTS MANUFACTURED PREVIOUSLY.

SNAPPER® McDonough, GA., 30253 U.S.A.

COPYRIGHT © 1999
SNAPPER INC.
ALL RIGHTS RESERVED

MANUAL No. 06445

(Rev. 1, 06/05/03)

Printed in U.S.A.