

Parts Manual for

SNAPPER[®]

21" SERIES 7 *

COMMERCIAL WALK MOWERS



*NOTE: See parts manual:

#06141 for 21" Series 0 Commercial models

#06041 for 21" Series 7 models

#06051 for 21" Series 1 & 5 models

#06132 for 21" Series 6 BBC models

#06131 for 21" Series 2 & 4 BBC models

NOTE: THE SERIES NUMBER IS THE
LAST NUMBER IN THE FIVE DIGIT
MODEL DESIGNATION.

INDEX - GROUP

HANDLES, CONTROLS ADAPTERS
DECALS
SIDE CHUTES
CUTTING DECK, BLADES
DRIVE SYSTEM - SELF PROPELLED
WHEELS, BRACKETS, LATCHES
ACCESSORIES
GRASS CATCHERS
ENGINE SPECIFICATIONS
HARDWARE BAGS

(SECTION)

(ONE)
(ONE)
(TWO)
(THREE)
(FOUR)
(FIVE)
(SIX)
(SIX)
(SEVEN)
(SEVEN)

PAGE(S)

1.1 - 1.3
1.3
2.1
3.1 - 3.2
4.1 - 4.4
5.1 - 5.3
6.1 - 6.3
6.2
7.1
7.1

SNAPPER POWER EQUIPMENT

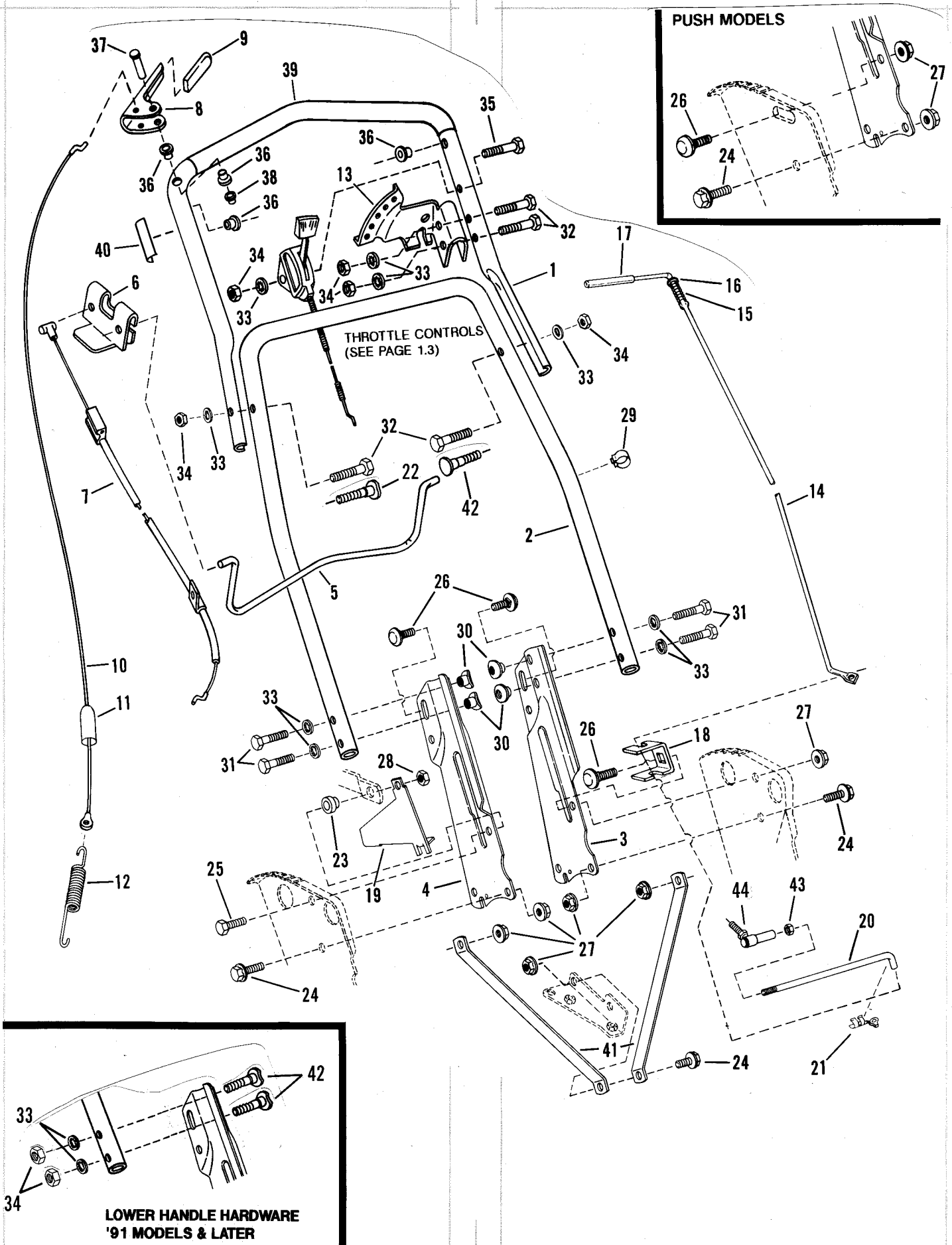
McDonough, GA • 30253



(REV. 1, 3/91)
(REPLACES I.R. 10/89)

MANUAL #06142

HANDLES & CONTROLS



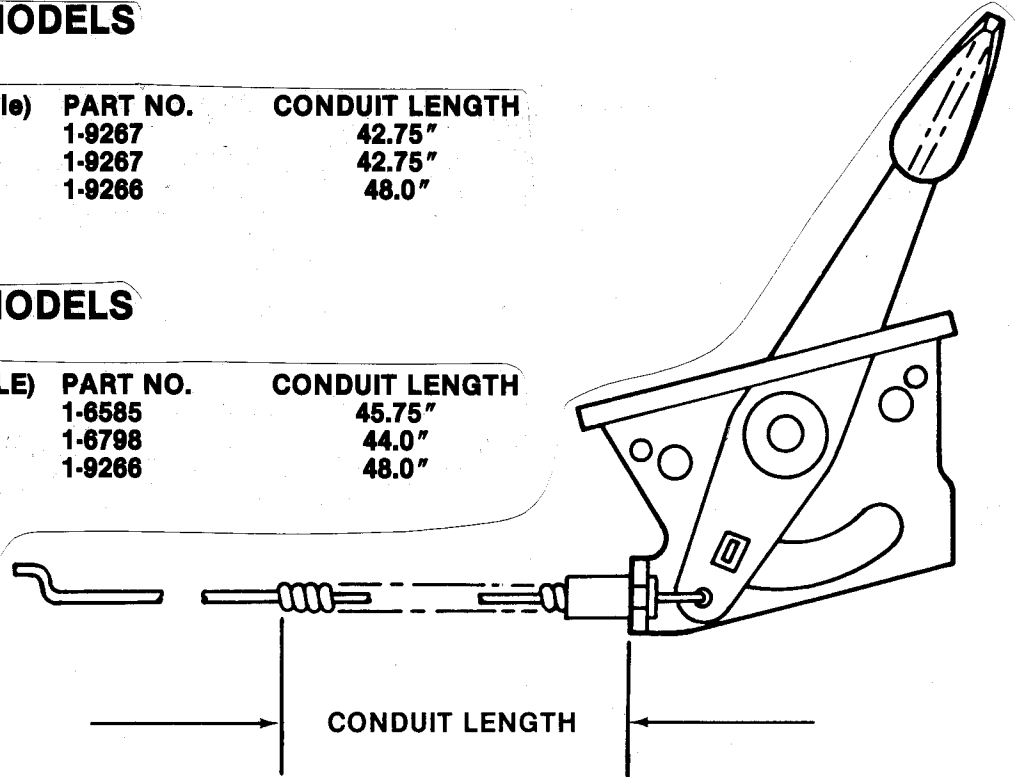
ITEM	PART NO.	DESCRIPTION	(USED ON)
1	3-6349	HANDLE, Upper	Push
-	3-6356	HANDLE, Upper	Self-Propelled
2	3-6351	HANDLE, Middle	All
3	3-8469	HANDLE, Lower Left Hand	All
4	3-8468	HANDLE, Lower Right Hand	All
5	1-7072	CONTROL, Blade	All
6	3-2829	CLIP, Blade Control	All (Same either side)
7	2-3824	CABLE, Blade Control	Briggs
-	2-3847	CABLE, Blade Control	Robin Engines (4-cycle Engines)
-	1-7446	CABLE, Blade Control	Robin Engines (2-cycle Engines)
8	3-2826	HANDLE, Wheel Drive	Self-propelled
9	1-4307	GRIP, Wheel Drive Handle	Self-propelled
10	2-3794	CABLE, Clutch Pul(Z-BEND)	Self-propelled
11	1-2121	COVER, Vinyl	Self-propelled (Part of item 10)
12	1-2122	SPRING, Clutch	Self-propelled
13	3-8478	SECTOR, Speed	Self-propelled
14	1-2317	LEVER, Speed Control	Self-propelled
15	1-2093	SPRING, Speed Control	Self-propelled
16	9-0188	WASHER, 3/8 Flat	All-different locations
17	2-3801	GRIP, Speed Control Handle	Self-propelled
18	3-2830	ANCHOR, Speed Control	Self-propelled
19	3-2408	GUIDE, Lower V-Belt	Self-propelled
20	1-5752	LINK, Transfer	Self-propelled
21	1-0937	CLIP, Transfer Rod	Self-propelled
22	9-1013	BOLT, 5/16-18x2 Curved Head	All ('91 Models & Later)
23	1-2114	BUSHING, Differential	Self-propelled
24	9-0595	BOLT, 5/16-18x3/4 Flange Lock	Self-propelled
25	9-0238	CAPSCREW, 5/16-24x1	Self-propelled
26	9-1026	BOLT, 5/16-18x5/8 Carriage	All (different locations)
27	9-0585	NUT, 5/16-18 Hex Flange Lock	All (different locations)
28	9-0222	NUT, 5/16-24 Center Lock	Self-propelled
29	2-3813	CLIP Cable/Wiring	All
30	2-3793	NUT, 5/16-18 Curved Head	All ('90 Models)
31	9-0548	SCREW, 5/16-18x2" Hex Cap	All ('90 Models)
32	9-1025	CAPSCREW, 1/4-28x1-3/8	Self-propelled
33	9-1023	LOCKWASHER, 1/4 Internal Tooth	All (different locations)('90 Models)
-	9-1068	LOCKWASHER, Internal Tooth	All (different locations) ('91 Models & Later)
34	9-1024	NUT, 1/4-20 Hex	All (different locations)('90 Models)
-	9-0196	NUT, 5/16-18 Hex	All (different locations) ('91 Models & Later)
35	9-1022	CAPSCREW, 1/4-28x1-3/4	All (throttle control)
36	1-4343	BUSHING	All
37	2-3792	PIN, Clutch Handle	Self-propelled
38	9-1020	PUSH-NUT (for handle pin)	Self-propelled
39	2-3901	GRIP, Foam	Push
-	2-3841	GRIP, Foam	Self-Propelled
40	2-3745	DECAL, Blade Control	All (SEE PAGE 1.3)
-	2-3886	DECAL, Blade Control	All (European Models)
41	3-7729	STRAP, Handle	All ('90 Models & Earlier)
-	3-2833	STRAP, Handle	All ('91 Models & Later)
42	1-7720	BOLT, 5/16-18x1-1/2" Curved Head	All ('91 Models & Later)
43	9-0095	NUT, 1/4-28 Hex	Self-Propelled
44	1-5753	JOINT, Ball	Self-Propelled

'90 MODELS

ENGINE/MODEL	(Cycle)	PART NO.	CONDUIT LENGTH
ROBIN	(4)	1-9267	42.75"
ROBIN	(2)	1-9267	42.75"
BRIGGS	(4)	1-9266	48.0"

'91 MODELS

ENGINE/MODEL	(CYCLE)	PART NO.	CONDUIT LENGTH
ROBIN	(2)	1-6585	45.75"
ROBIN	(4)	1-6798	44.0"
BRIGGS	(4)	1-9266	48.0"



DECALS



WARNING
-TO PREVENT INJURY-


STOP ENGINE BY RELEASING BLADE CONTROL OR BY MOVING ENGINE CONTROL to STOP BEFORE:

- REMOVING BAG or CLEARING GRASS.
- ADJUSTING or CLEANING MOWER.
- PLACING HANDS or FEET NEAR BOTTOM OF BLADE HOUSING.

FOLLOW SAFETY INSTRUCTIONS IN OPERATOR'S MANUAL!

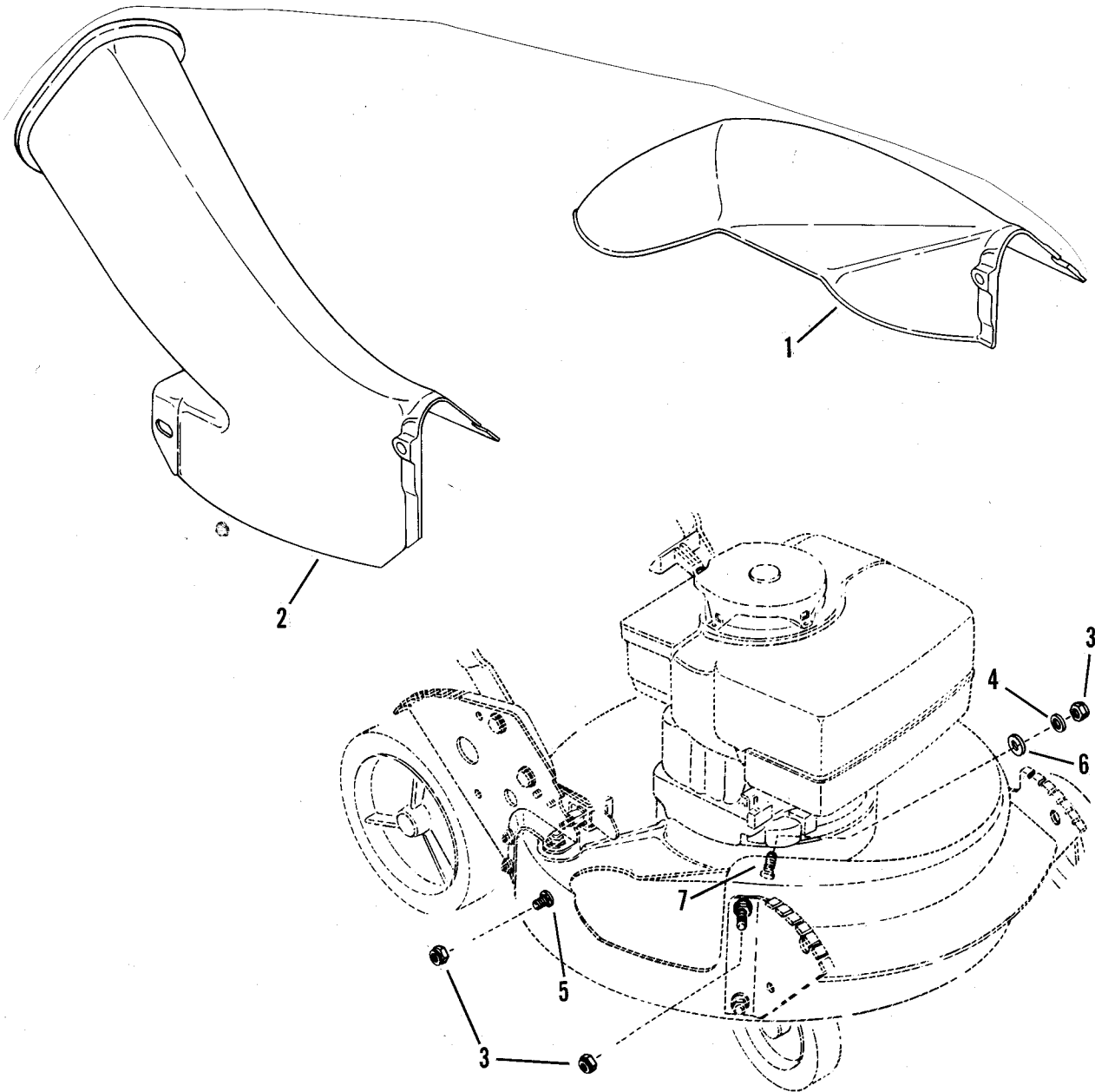
STARTING PROCEDURE

1. Set ENGINE CONTROL to START or CHOKE.
2. Hold BLADE CONTROL firmly up to HANDLE.
3. Stand CLOSE to SIDE of HANDLE.
4. Place FOOT on top of REAR WHEEL.
5. Pull STARTER ROPE.



SEE PAGE 7.1 FOR OTHER DECALS

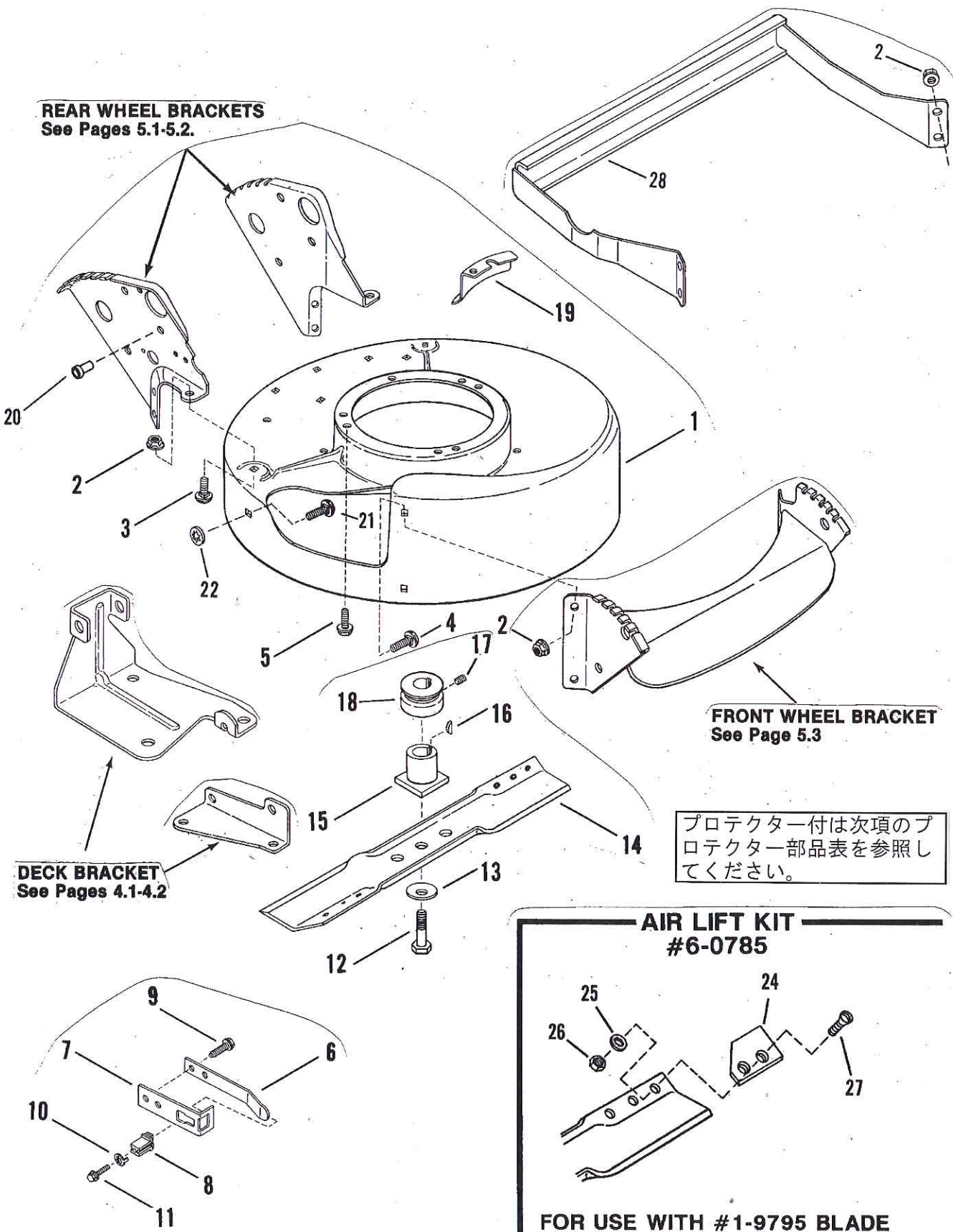
ITEM	PART NO.	DESCRIPTION
1	1-3010	DECAL, Danger
2	2-3745	DECAL, Blade Control
3	2-3870	DECAL, Warning
4	1-9279	DECAL, SNAPPER
-	1-7149	DECAL, SNAPPER



ITEM	PART NO.	DESCRIPTION
-	6-0955	KIT, Side Chute (Includes Item 2)
1	1-6090	CHUTE, Side
2	1-6050	ADAPTER, Grass Bag Deck
3	9-0951	NUT, 5/16-18 Hex Flange Lock (3)
4	9-0188	WASHER, 5/16 Flat
-	6-0933	KIT, Grass Bag Catcher (See Page 6.2)
5	1-1791	RETAINER, 5/16 Bolt
6	9-0122	WASHER, 5/16 Flat
7	9-1097	BOLT, 5/16-18x3/4" Carriage

PAC-N-SAC components found in separate manual #06121.

CUTTING DECK, BLADE, INTERLOCK



REAR WHEEL BRACKETS
See Pages 5.1-5.2.

DECK BRACKET
See Pages 4.1-4.2

FRONT WHEEL BRACKET
See Page 5.3

プロテクター付は次項の
プロテクター部品表を参照し
てください。

AIR LIFT KIT
#6-0785

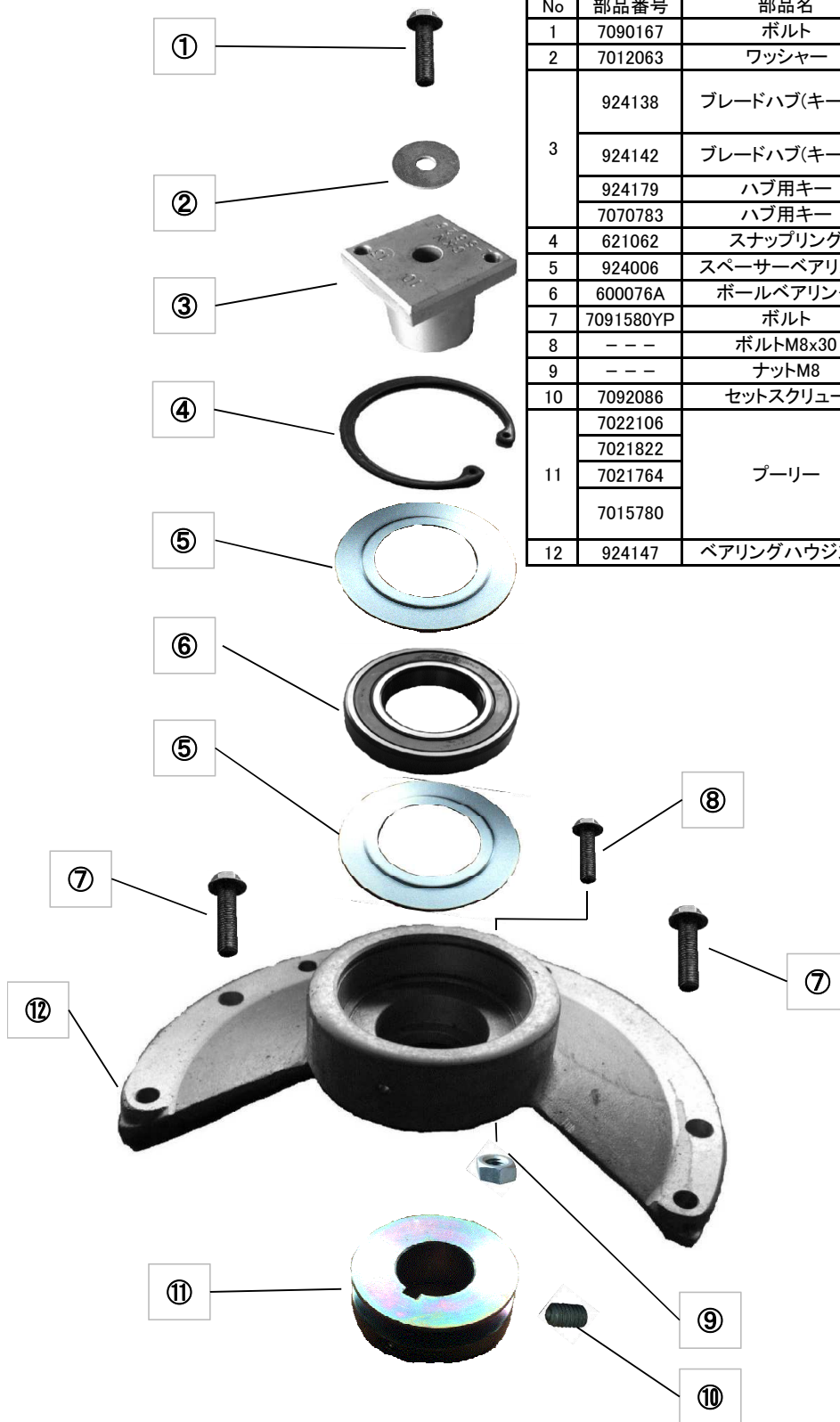
FOR USE WITH #1-9795 BLADE

CUTTING DECK, BLADE, INTERLOCK

ITEM	PART NO.	DESCRIPTION
1	5-7665	DECK, Mower (Includes painted deck with decals)
2	9-0585	NUT, 5/16-18 Hex Flange Lock (12)
3	9-0731	BOLT, 5/16-18x1/2" Short Neck Carriage (Gr.)(9)
4	9-0383	BOLT, 5/16-18x1" Short Neck Carriage
5	9-0324	SCREW, 3/8-16x1" Self-tapping (Engine Mounting)(2)
6	3-2417	SPRING, Wheel Bracket Type Interlock
7	3-2416	BRACKET, Wheel Bracket Type Interlock
8	1-2048	INSULATOR, Interlock
9	9-0539	SCREW, 1/4-20x1/2" Self-tapping (2)
10	9-0385	WASHER, #8Tab Internal Tooth Lock
11	9-0379	SCREW, #8-18x3/4" Hex Head Machine
12	9-0167	SCREW, 3/8-24x2" Hex Head Cap (Gr. 5)
13	1-2063	WASHER, Cone
14	1-9795	BLADE, Cutter, 20.75" (Replaced 1-9710 & 1-9702)
15	1-5626	HUB, Blade Drive
16	1-2011	KEY, HI-Pro (2) ('90 Models)
-	1-6381	KEY, Square (Robin) ('91 Models & Later)
-	1-5894	KEY, Square (Briggs) ('91 Models & Later)
17	9-0201	SCREW, 5/16-18x5/16" Hex Socket Set
18	2-1822	PULLEY, Engine (Briggs)('91 Models & Later)
-	1-5780	PULLEY, Engine ('91 Models & Later)
19	3-1968	SHIELD, Belt Opening Cover (Push Models Only)
20	1-2135	BUSHING, Interlock Wire
21	9-0799	BOLT, 5/16-18x5/8" Short Neck Carriage (4)
22	1-1791	RETAINER, 5/16 Bolt
23	1-1762	COVER, Spark Plug (NOT SHOWN)
-	6-0785	KIT, Air Lift (Includes Items 24 thru 27)
24	3-2558	LIFT Air (2)
25	9-0391	WASHER, 5/16 Internal Tooth Lock (4)
26	9-0223	NUT, 5/16-24 Hex (4)
27	9-0228	SCREW, 5/16-24x21/32" Machine (4)
28	4-9755	STRUCTURE, Fender (European Only)

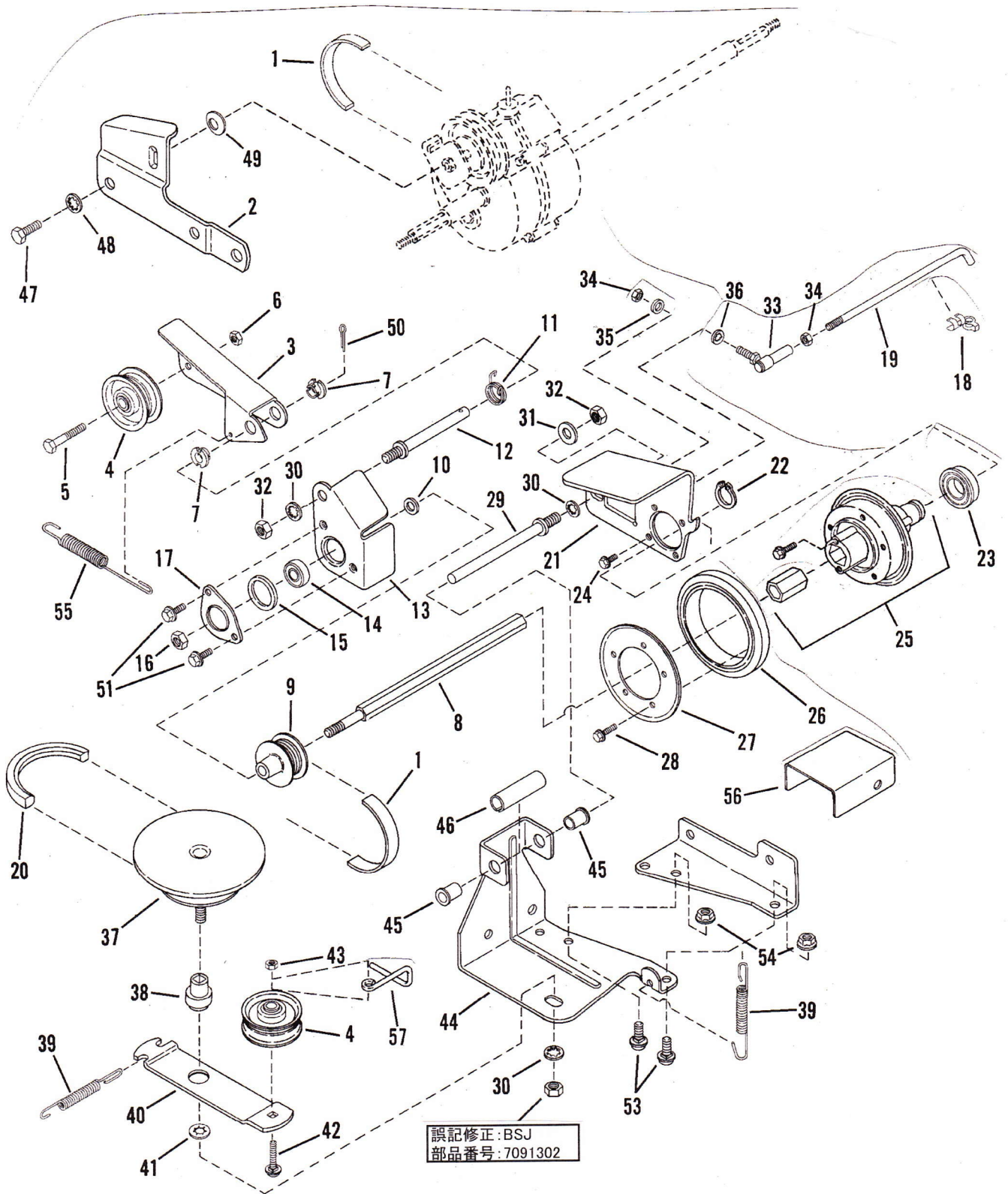
プロテクター付は次項のプロテクター部品表を参照してください。

クランクシャフトプロテクター部品表



No	部品番号	部品名	個数	備考
1	7090167	ボルト	1	
2	7012063	ワッシャー	1	
3	924138	ブレードハブ(キー付)	1	ブリッグス 122Q Kawasaki FJ180V Robin EC13V EH18V
	924142	ブレードハブ(キー無)	1	Honda GXV160 Kawasaki FC150
	924179	ハブ用キー	1	Honda-GXV160用
	7070783	ハブ用キー	1	Kawasaki-FC150用
4	621062	スナップリング	1	
5	924006	スペーサーベアリング	2	
6	600076A	ボールベアリング	1	
7	7091580YP	ボルト	2	
8	---	ボルトM8x30	1	市販品を利用ください。
9	---	ナットM8	1	市販品を利用ください。
10	7092086	セットスクリュー	1	
11	7022106	プーリー	1	ロビン EC13/EH18用
	7021822		1	ホンダ GXV160用
	7021764		1	カワサキ FC150用
	7015780		1	カワサキ FJ180用
	7015780		1	ブリッグス 122Q用
12	924147	ベアリングハウジング	1	

DRIVE SYSTEM - SELF-PROPELLED



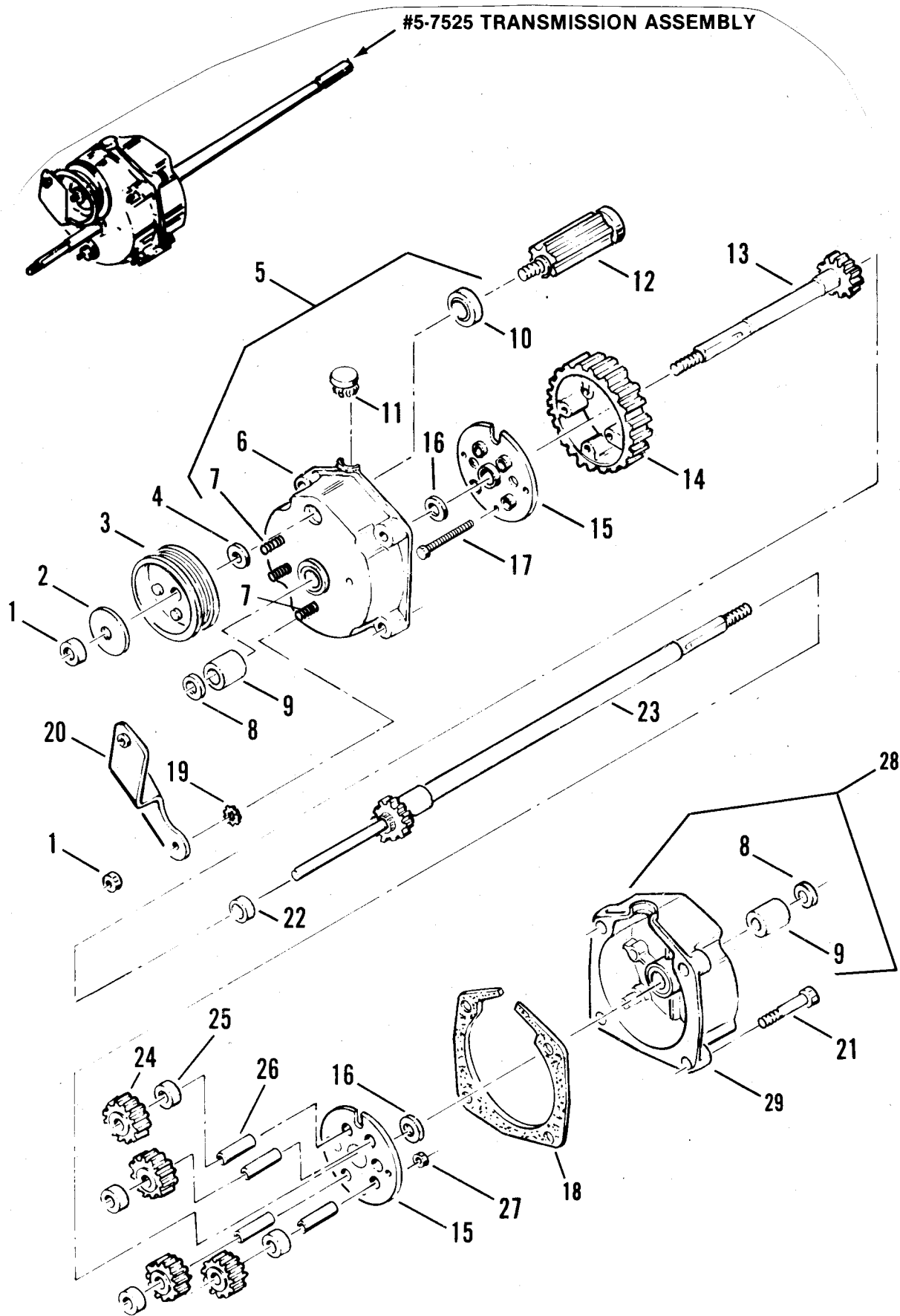
誤記修正:BSJ
部品番号:7091302

DRIVE SYSTEM - SELF-PROPELLED

ITEM	PART NO.	DESCRIPTION
1	1-2354	BELT, Poly-Vee
2	3-1880	LINK, Differential
-	5-1921	ASSEMBLY, Clutch Idler (Includes items 3 thru 7)
3	3-2832	ARM, Clutch Idler
4	1-2124	PULLEY, Idler
5	9-0552	CAPSCREW, 1/4-28x1-3/8" Hex Head
6	9-0303	NUT, 1/4-28 Hex Lock
7	1-2117	BUSHING, 3/8 I.D. Nylon (2)
8	2-3744	HEX-SHAFT
9	1-9383	PULLEY
10	1-2316	WASHER
11	1-2126	SPRING, Torsion
12	1-2111	STUD
13	3-1873	HOLDER, Bearing (Inner Half)
14	1-2304	BEARING, Ball
15	1-1025	O-RING
16	9-0289	NUT, 3/8 Hex Center Lock
17	3-1809	HOLDER, Bearing (Outer Half)
18	1-0937	CLIP, 1/4 Right Arc (Transfer Rod)
19	1-5752	LINK, Transfer
20	1-2353	BELT, Engine Drive
-	5-7444	ASSEMBLY, Driven Disc (Includes items 21 thru 28)
21	3-8486	PLATE, Thrust
22	1-0746	RING, Retaining
23	1-5474	BEARING, Ball
24	9-0981	SCREW, #10-32x1/4" Self-Tapping Machine (4)
25	5-1616	ASSEMBLY, Hub (Includes 1-1108 Bushing & two 9-0913 Self-Tapping Screws)
26	2-3364	DRIVEN-RING
27	3-1013	PLATE, Ring Retaining
28	9-0913	SCREW, #10-24x1/2 Self-Tapping Machine (5)
29	1-2125	GUIDE, Thrust Plate
30	9-0390	WASHER, 3/8 Internal Tooth Lock (2)
31	9-0122	WASHER, 3/8 Flat (3)
32	9-0155	NUT, 3/8-24 Hex (2)
33	1-5753	JOINT, Ball
34	9-0095	NUT, 1/4-28 Hex
35	9-0055	WASHER, 1/4 Flat
36	9-0053	WASHER, 1/4 Internal Tooth Lock
37	*	ASSEMBLY, Drive-Disc
38	*	BUSHING
39	1-7326	SPRING (Wheel Drive & Idler) (2)
40	3-2116	ARM, Idler
41	1-3847	RETAINER, 3/8 Bolt
42	9-0078	BOLT, 1/4-20x1-1/4" Carriage
43	9-0372	NUT, 1/4-20 Hex Center Lock
-	5-0751	ASSEMBLY, Deck Bracket (Includes items 44 thru 46)
44	3-1919	BRACKET, Deck
45	1-2306	BUSHING, Flange (2)
46	2-1758	SPACER
47	9-0534	SCREW, 5/16-18x1/2" Hex Head Cap
48	9-0391	WASHER, 5/16 Internal Tooth Lock
49	1-1079	WASHER, Spring
50	9-0555	COTTER-PIN, 3/32x1/2"
51	9-0539	SCREW, 1/4-20x1/2" Self-Tapping
52	3-7732	BRACKET, Strap
53	9-0731	BOLT, 5/16-18x5/8" Short Neck Carriage (2)
54	9-0585	NUT, 5/16-18 Hex Flange Lock (2)
55	1-2122	SPRING, Clutch
56	3-2664	SHIELD, Hex Shaft (European Only)
57	1-6380	SCRAPPER, Drive Pulley

* NOTE: Order Kit #6-0710 for replacement.

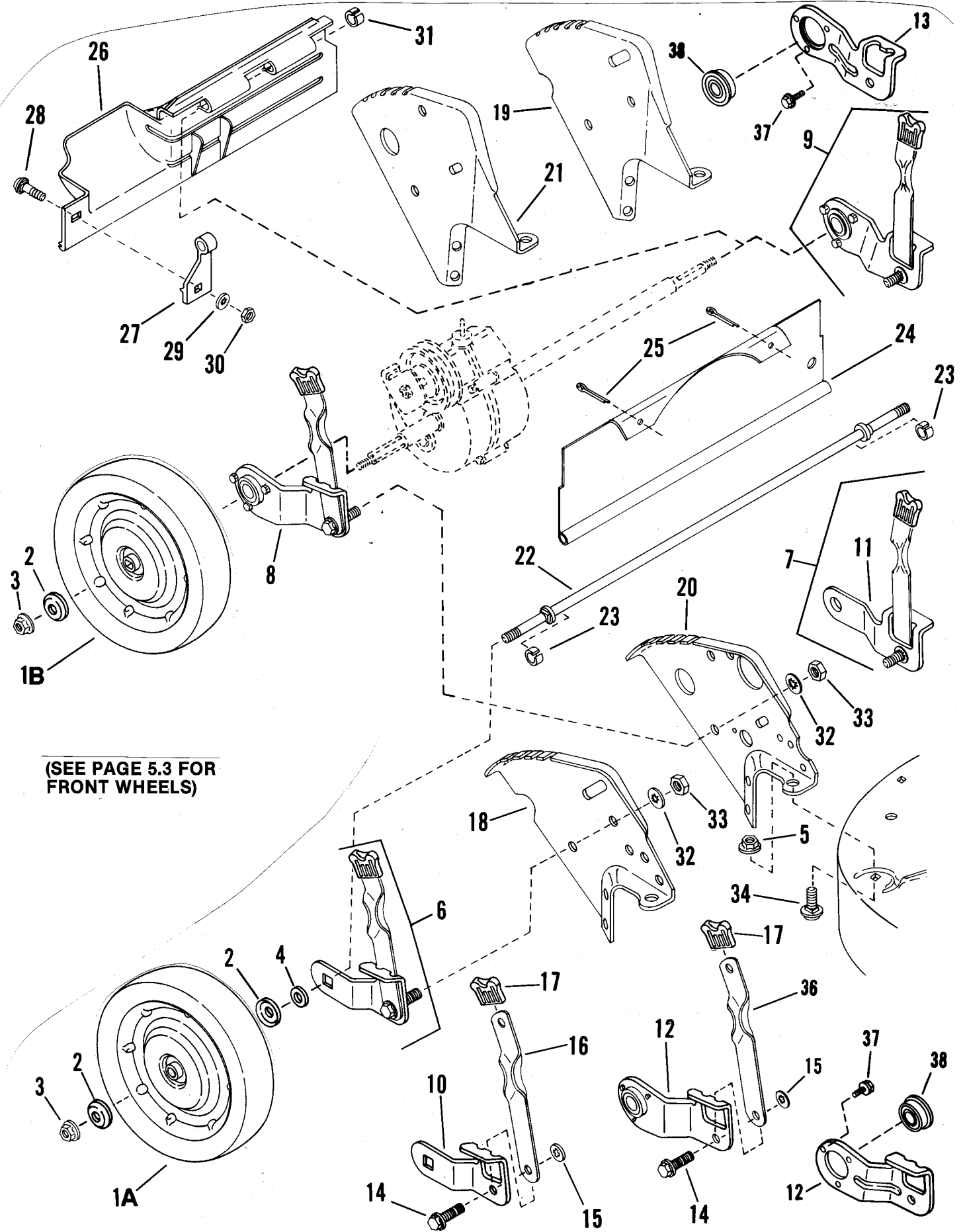
TRANSMISSION (DIFFERENTIAL)



ITEM	PART NO.	DESCRIPTION
-	5-7525	ASSEMBLY, Transmission (Includes items 1 thru 29)
1	1-1201	NUT, 5/16-24 Hex Lock (3)
2	1-1132	WASHER, Spring
3	1-9213	PULLEY, Poly-Vee Belt
4	1-1724	WASHER, Spring
5	5-9794	HOUSING ASSEMBLY, Right (Includes items 6,7,8,9,10)
6	1-7080	HOUSING, Right Side
7	1-4155	SCREW, 5/16-24x1-1/8" Rib Neck
8	1-2314	SEAL, 5/8" ID (2)
9	1-2507	BEARING, Differential (2)
10	1-1767	BEARING, Ball
11	1-1133	PLUG, Housing
12	5-0767	GEAR, Input
13	5-0830	AXLE, Short
14	1-2495	GEAR, Differential, 46 Tooth
15	3-1970	PLATE (2)
16	3-1965	WASHER, Thrust (2)
17	9-0557	SCREW, 10-32x1-1/2" Hex Head Cap (4)
18	1-1774	GASKET, Housing
19	9-0189	WASHER, 5/16" Internal External Tooth Lock
20	5-1903	BRACKET, Differential
21	9-0911	SCREW, 1/4-20x1-1/4 " Self-Tapping (4)
22	1-2543	SPACER, Axle Gear
23	5-0831	AXLE, Long
24	2-1115	GEAR, Pinion, 12 Tooth (4)
25	1-2500	SPACER, Pinion Gear (4)
26	1-1110	SHAFT, Pinion (4)
27	9-0376	NUT, 10-32 Hex Lock (4)
28	5-7523	HOUSING ASSEMBLY, Left (Includes items 8,9,29)
29	1-7015	HOUSING, Left Side

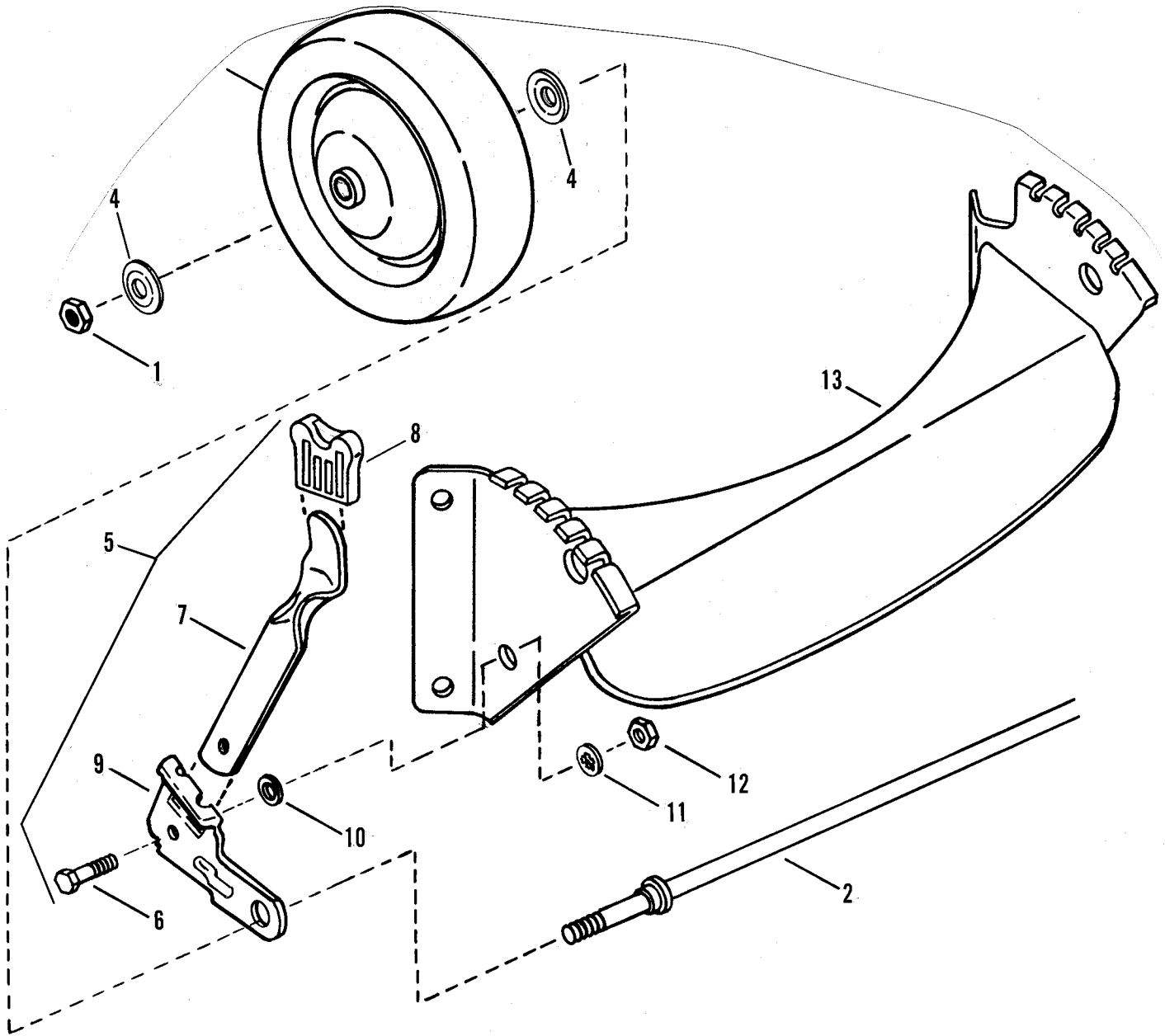
NOTE: 6-0337 KIT, Transmission Gear (includes items 14 thru 17 & 22 & 24 thru 27)

REAR WHEELS, BRACKETS, LATCHES

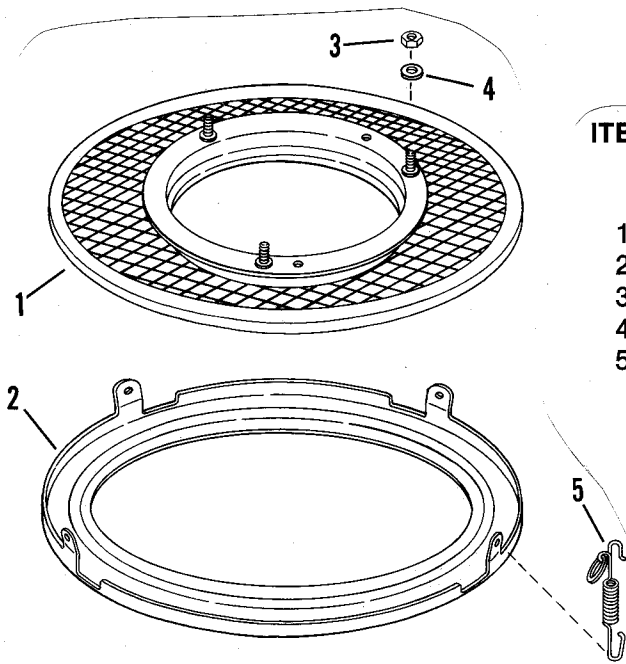


ITEM	PART NO.	DESCRIPTION
1A	1-9200	WHEEL, 9x2.00 Steel Rim (Push Models) ('90 Models)
-	1-7729	WHEEL, 9x2.00 Steel Rim (Push Models) ('91 Models & Later)
1B	1-9201	WHEEL, 9x2.00 Steel Rim (Self Propelled) ('90 Models)
-	1-7695	WHEEL, 9x2.00 Steel Rim (Self propelled) ('91 Models & Later)
2	3-1121	HUB-CAP (4)
3	9-0394	NUT, 7/16-20 Hex Center Lock
4	3-1961	WASHER, Steel (2)
5	9-0585	NUT, 5/16-18 Hex Flang Lock
6	5-1885	WHEEL ARM ASSEMBLY (Front Left & Rear Right) Square opening-Includes items 10,14,15,16,17
7	5-1886	WHEEL ARM ASSEMBLY (Front Right & Rear Left) Round opening-Includes items 11,14,,15,16,17
8	5-1814	WHEEL ARM ASSEMBLY (Rear Right "P" Models) Includes items 12,14,15,16,17,36,37,38
9	5-1815	WHEEL ARM ASSEMBLY (Rear Left "P" Models) includes items 13,14,15,16,17,36,37,38
10	3-1016	ARM (Square Axle End)
11	3-1017	ARM (Round Axle End)
12	3-2722	ARM, Wheel, Rear Right "P" Models
13	3-2723	ARM, Wheel, Rear Left "P" Models
14	1-5761	BOLT, 5/16-18x1 Shoulder
15	1-1791	RETAINER, 5/16 Bolt
16	1-2325	LATCH, Height Adjusting
17	2-7702	GRIP, Latch
18	3-6050	BRACKET, Right Rear Wheel (Push Models)
19	3-6049	BRACKET, Left Rear Wheel (Push Models)
20	3-6048	BRACKET, Right Rear Wheel (Self-prop. "P" Models)
21	3-6242	BRACKET, Left Rear Wheel (Self-prop. "P" Models)
22	2-1119	AXLE, (Rear on Push Models also front on all)
23	1-1780	RING (2) (Push Models)
24	3-7765	GUARD, Rear Foot (Push Models)
25	9-0297	COTTER PIN, 1/8x1-1/2 (2)
26	1-9522	GUARD, Rear Foot (Self-prop. "P" Models)
27	1-2616	SUPPORT, Foot Guard
28	9-0005	BOLT, 1/4-20x1/2 Short Neck Carriage Gr.5
29	9-1023	WASHER, 1/4 Int. Tooth Lock
30	9-0063	NUT, 1/4-20 Hex
31	2-3791	RING
32	9-0391	WASHER, 5/16 Int. Tooth Lock
33	9-0196	NUT, 5/16-18 Hex
34	9-0731	BOLT, 5/16-18x1/2 Short Neck Carriage
35	3-1960	HUB-CAP, Deep Dish (4)
36	1-9218	LATCH, Height Adjusting (Self-Propelled Models)
37	9-1012	SCREW, #10-32x3/8 Self-Tapping (3)
38	1-8767	BEARING

FRONT WHEELS, BRACKET, LATCHES

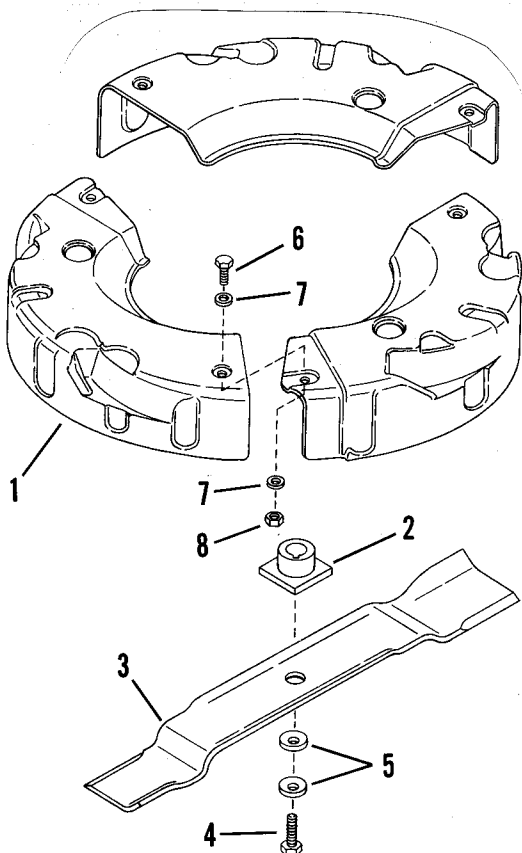


ITEM	PART NO.	DESCRIPTION
1	9-0377	NUT, 7/16-20 Hex Centerlock
2	2-1119	AXLE
3	1-9199	WHEEL, Front, 7x1.75 Steel Rim (2)
-	1-7694	WHEEL, Front 7x1.75 (Steel Rim) (2) ('91 ModHls & Later)
4	3-1121	HUB-CAP
5A	5-1885	ARM ASSEMBLY, Left Wheel (Consists of Items 8,9A,10,11,12)
5B	5-1886	ARM ASSEMBLY, Right Wheel (Consists of Items 8,9B,10,11B,12)
6	1-5761	BOLT, 5/16-18 Shoulder
7	1-2325	LATCH, Height
8	2-7702	GRIP
9A	3-1016	ARM, Left Wheel
9B	3-1017	ARM, Right Wheel
10	1-1791	RETAINER, 5/16 Bolt
11	9-0391	WASHER, 5/16 Int. Toothlock
12	9-0196	NUT, 5/16-18 Hex
13	4-7971	BRACKET, Front Wheel

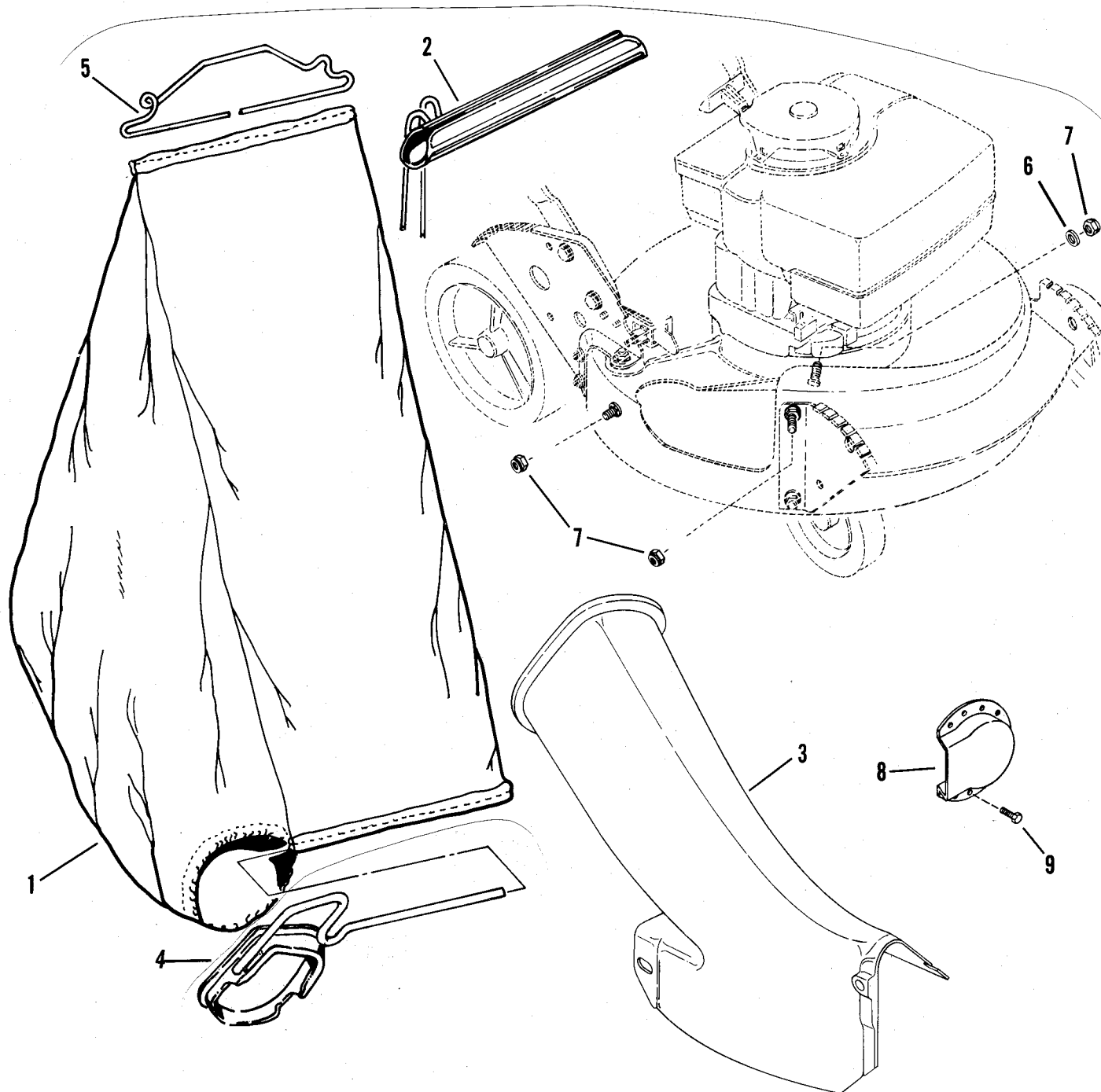


ITEM	PART NO.	DESCRIPTION
	6-0440	KIT, Snapperizer (Includes items 1 thru 5)
1	5-1243	SCREEN, Fastener Assembly
2	3-9759	RING, Bottom
3	9-0223	NUT, 5/16-24 Hex (3)
4	9-0187	WASHER, 5/16 Split Lock (3)
5	1-2587	SPRING (3)

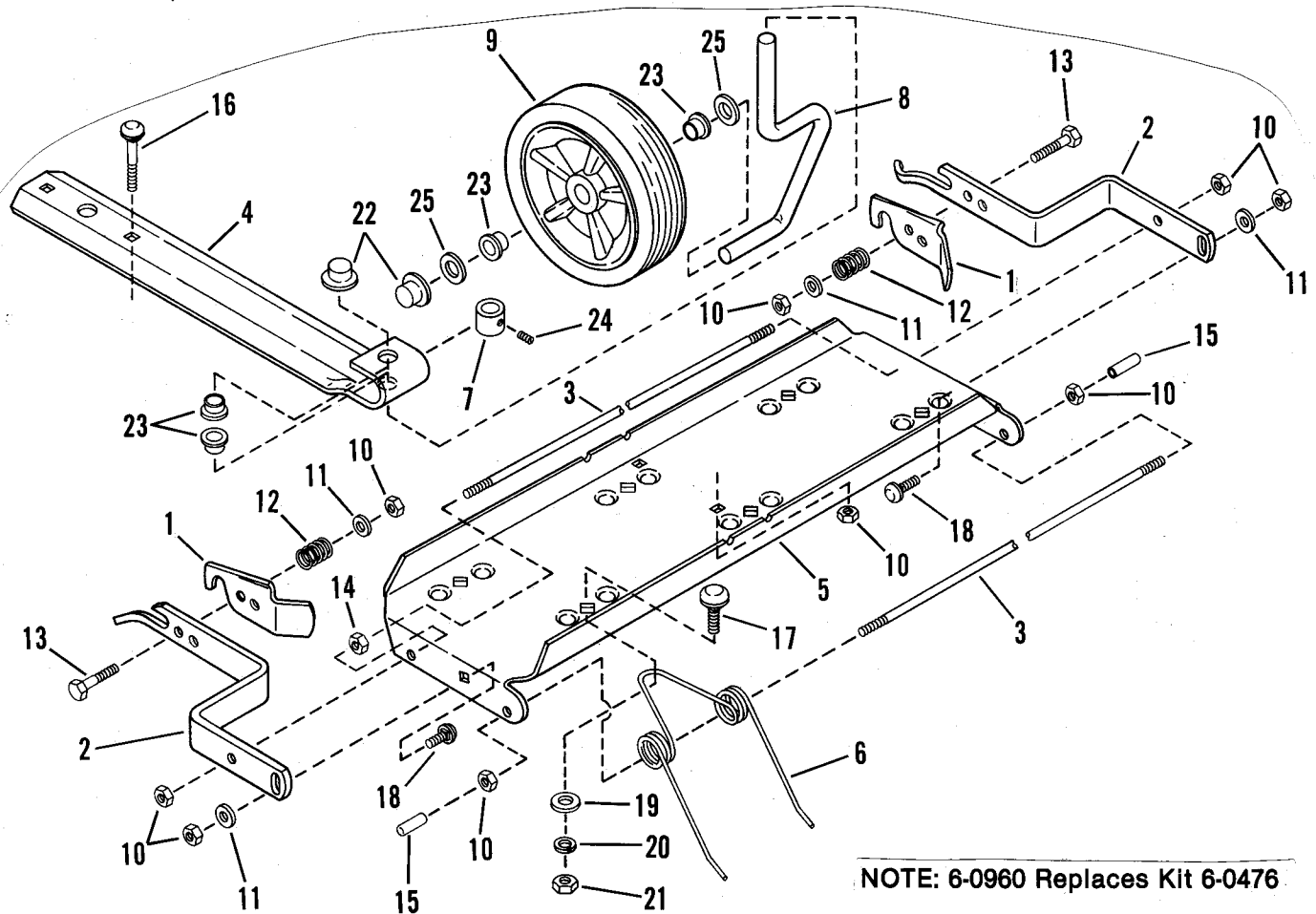
MULCHERIZER



ITEM	PART NO.	DESCRIPTION
-	6-0842	KIT, Mulcherizer (Includes items marked with *)
-	6-0420	KIT, Mulcherizer (Includes items 1 thru 8)
1*	1-9814	LINER (3)
2	1-3870	HUB (7/8" I.D.)
-.*	1-5936	HUB (25mm I.D.)
3*	1-9521	BLADE, Mulcherizer
4*	9-0483	SCREW, 3/8-24x1 3/4" Hex Head Cap (Gr.5)
5*	1-2063	WASHER, Cone (2)
6*	9-0100	SCREW, 1/4-28x5/8" Hex Head Cap (Gr.5)(3)
7*	9-0055	WASHER, 1/4 Flat (6)
8*	9-0303	NUT, 1/4-28 Hex Lock (3)



ITEM	PART NO.	DESCRIPTION
-	6-0936	KIT, Grass Catcher (Includes items 1 & 2)
1	2-3774	BAG, Grass (COMMERCIAL ONLY)
2	5-0711	ASSEMBLY, Rope & Slider
3	1-6050	ADAPTER, Bag
4	4-7969	CONNECTOR, Bag
5	1-9247	WIRE, Bag Connector
6	9-0188	WASHER, 5/16 Flat
7	9-0951	NUT, 5/16-18 Hex Flange Lock (3)
8	2-3031	DEFLECTOR, Muffler (Briggs)
9	2-3023	SCREW, #8-18x3/8" Hex Head Cap (3)
-	1-6268	BAG, Polyethylene (NOT SHOWN)



NOTE: 6-0960 Replaces Kit 6-0476

ITEM	PART NO.	DESCRIPTION
-	6-0960	KIT, Thatcherizer (Includes 1 thru 27)
1	3-2891	LATCH, Frame Attachment (2)
2A	3-2892	BAR, Mount (Right Hand)
2B	3-2893	BAR Mount (Left Hand)
3	1-8499	ROD, Tine (2)
4	1-8700	SUPPORT, Wheel
5	1-9948	TRAY, Tine
6***	1-8496	SPRING, Tine Thatching (6)
7**	1-4100	BUSHING, Wheel Adj.
8	1-8493	AXLE, Wheel
9	1-8189	WHEEL, Gage 7x1.50
10*	9-0761	LOCKNUT, 1/4-20 Hex (10)
11*	9-0598	WASHER, 1/4 SAE (4)
12**	1-4114	SPRING, Compression (2)
13*	9-0825	BOLT, 1/4-20x1-1/4 Hex (2)

ITEM	PART NO.	DESCRIPTION
14*	9-0063	NUT, 1/4-20 Hex (2)
15**	1-4111	CAP, Vinyl (2)
16*	9-0015	BOLT, 1/4-20x1-3/4 Carriage (2)
17*	9-0383	BOLT, 5/16-18x1 Carriage (6)
18*	9-0074	BOLT, 1/4-20x3/4 Carriage (2)
19*	1-4098	WASHER, Reinforcing (6)
20*	9-0187	LOCKWASHER, 5/16 (6)
21*	9-0196	NUT, 5/16-18 Hex (6)
22**	1-4101	PUSH NUT, 1/2 (2)
23**	1-4342	BEARING, Nyliner (4)
24**	1-4103	SETSCREW, 5/16x1/4
25*	9-0250	WASHER, 1/2 (2)
26	1-4115	DECAL, Adjustment (Not Shown)
27	1-4062	DECAL, Thatcherizer (Not Shown)
	6-0965	KIT, Adapter (Includes items 1,2 & 10 thru13)

*Part of Hardware Bag #6-0554
 **Part of Hardware Bag #6-0555
 ***Part of Hardware Bag #6-0574 (6 spring in bag)

ENGINE SPECIFICATIONS

ENG. H.P.	START TYPE	SNAPPER#	ENG. MFGR.	MFGR. MODEL	MFGR. TYPE
5	ROPE	17906	BRIGGS	104772	3112-01
4	ROPE	17888	ROBIN	WI-125V	600005
5	ROPE	17907	BRIGGS	132922	3132-01
5	ROPE	17889	ROBIN	WI-185V	800926

NOTE: PURCHASE ENGINE PARTS FROM ENGINE MANUFACTURER'S DEALER.

HARDWARE BAGS

MOWER MODEL DESIGNATION	APPLICABLE HARDWARE BAG		60939		60938	
	60939	60938	CONSISTS OF:		CONSISTS OF:	
				QTY		QTY
C21507B	*		2-3813 CLIP	2	2-3813 CLIP	3
PC21507B		*	9-0111 CAPSCREW, 1/4-28x1 3/4"	1	1-0937 ROD CLIP	1
PC21507BV		*	9-0552 CAPSCREW, 1/4-28x1 3/8"	2	9-0111 CAPSCREW, 1/4-28x1 3/4"	1
C21507R	*		9-0095 HEX NUT, 1/4-28	3	9-0552 CAPSCREW, 1/4-28x1 3/8"	2
C21407R-2	*		9-0548 CAPSCREW, 1/4-20x1"	4	9-0095 HEX NUT, 1/4-28	3
PC21407R-2		*	2-3793 T-NUT, 1/4-20 Curved	4	9-0548 CAPSCREW, 1/4-20x1"	4
PC21507R		*	9-0053 LOCK WASHER, 1/4"	7	2-3793 T-NUT, 1/4-20 Curve Head	4
			9-0951 LOCK NUT, 5/16-18	2	9-0053 LOCK WASHER, 1/4"	7
					9-0951 LOCK NUT, 5/16-18	3
					9-0010 WASHER, #10	2



ITEM	PART NO.	DESCRIPTION
1	1-7304	DECAL, Recoil Housing (3.35 O.D.)
2	1-7305	DECAL, 4HP 2-Cycle
3	1-7310	DECAL, 5HP
4	1-7292	DECAL, Recoil Housing (1.8 O.D.)

IT IS THE POLICY OF SNAPPER POWER EQUIPMENT TO IMPROVE ITS PRODUCTS WHENEVER IT IS POSSIBLE AND PRACTICAL TO DO SO. WE RESERVE THE RIGHT TO MAKE CHANGES OR ADD IMPROVEMENTS AT ANY TIME WITHOUT INCURRING ANY OBLIGATION TO MAKE SUCH CHANGES ON PRODUCTS MANUFACTURED PREVIOUSLY.

SNAPPER POWER EQUIPMENT
McDonough, GA • 30253

