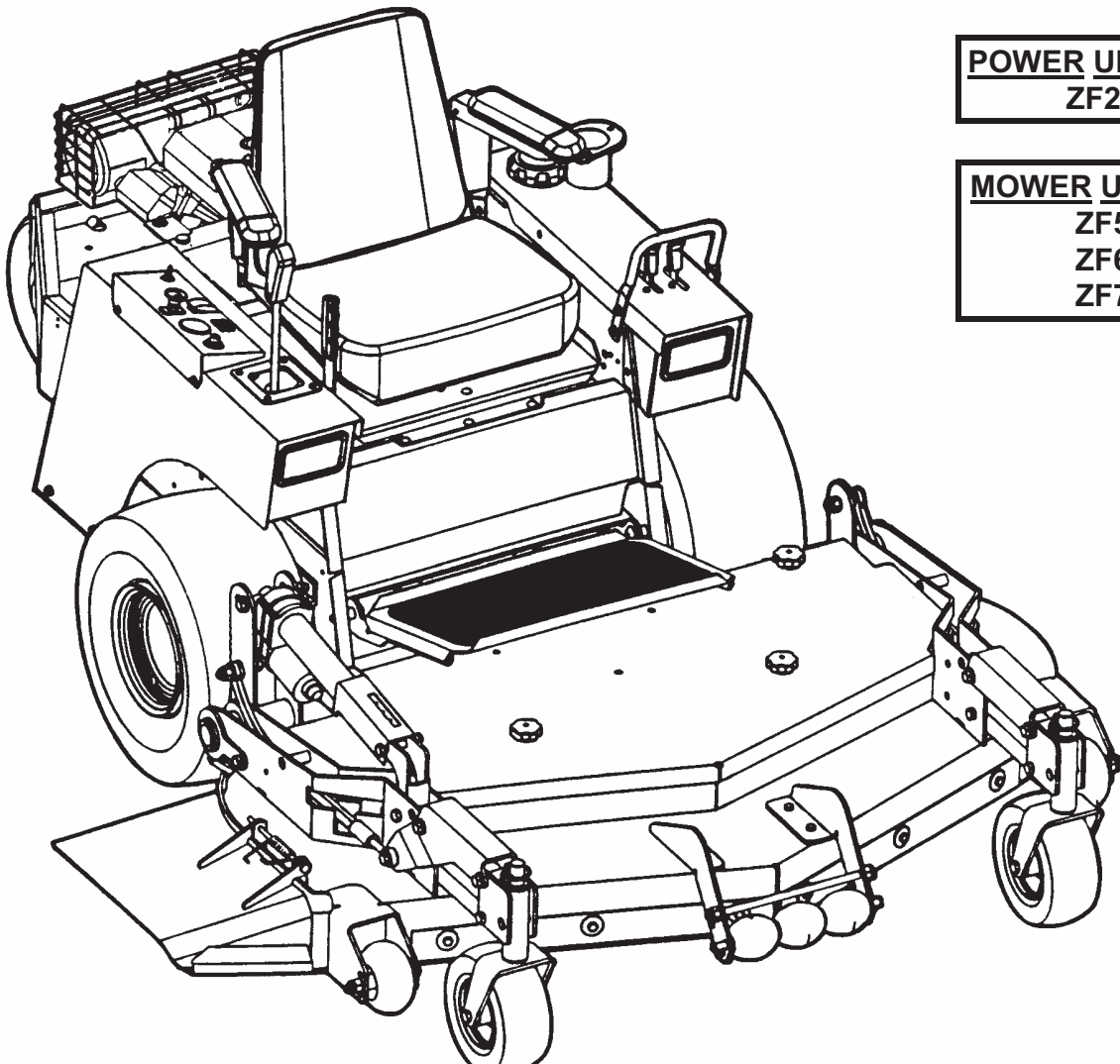


*Parts Manual for*  
**SNAPPER**<sup>®</sup>  
*OUT FRONT Z-RIDER*<sup>™</sup>  
*ZERO TURNING HYDRO DRIVE*  
*SERIES 1 & 2*



**POWER UNIT MODELS**  
ZF2501KH

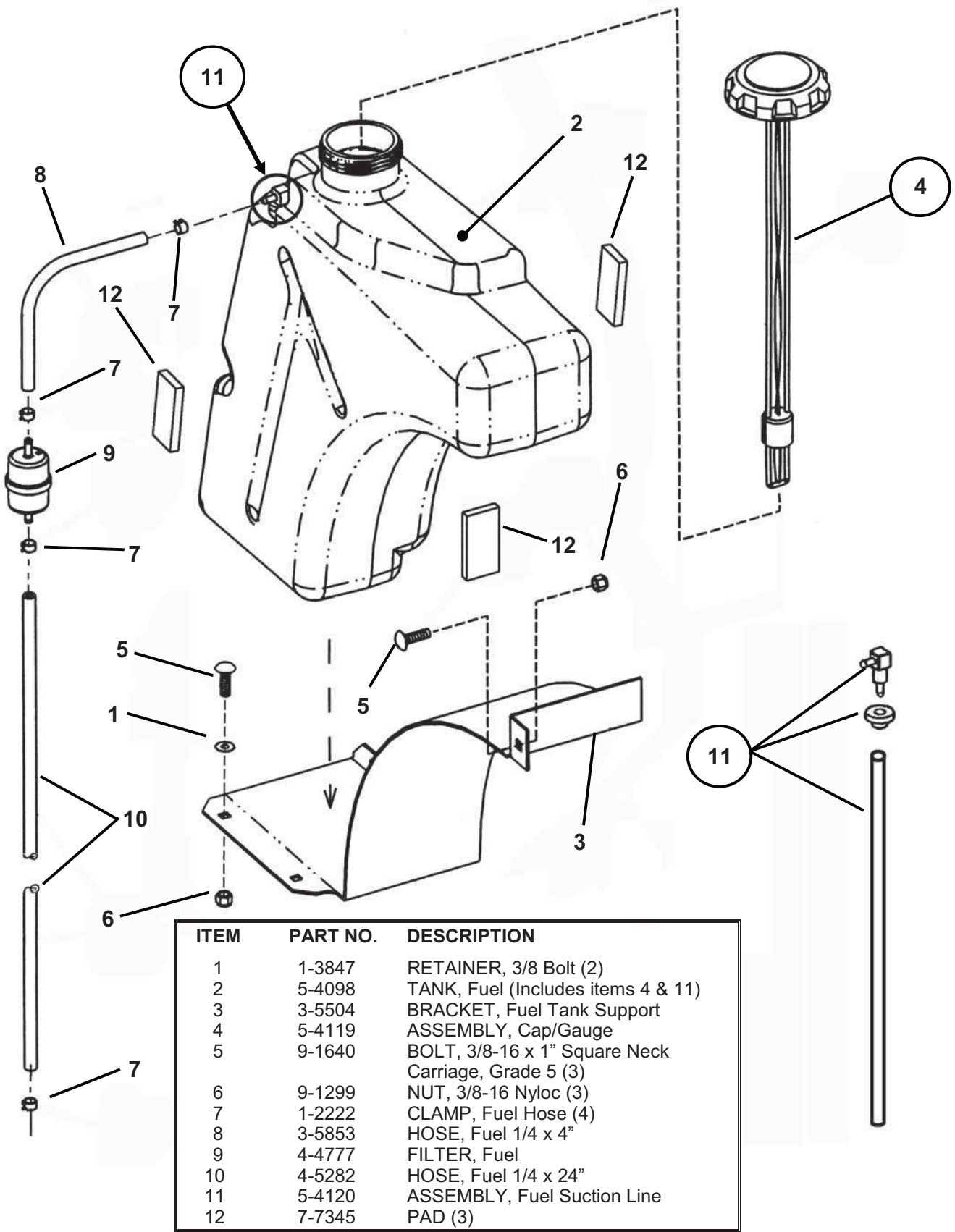
**MOWER UNIT MODELS**  
ZF5201M  
ZF6101M  
ZF7302M

**SNAPPER**<sup>®</sup> McDonough, GA., 30253 U.S.A.

# CONTENTS

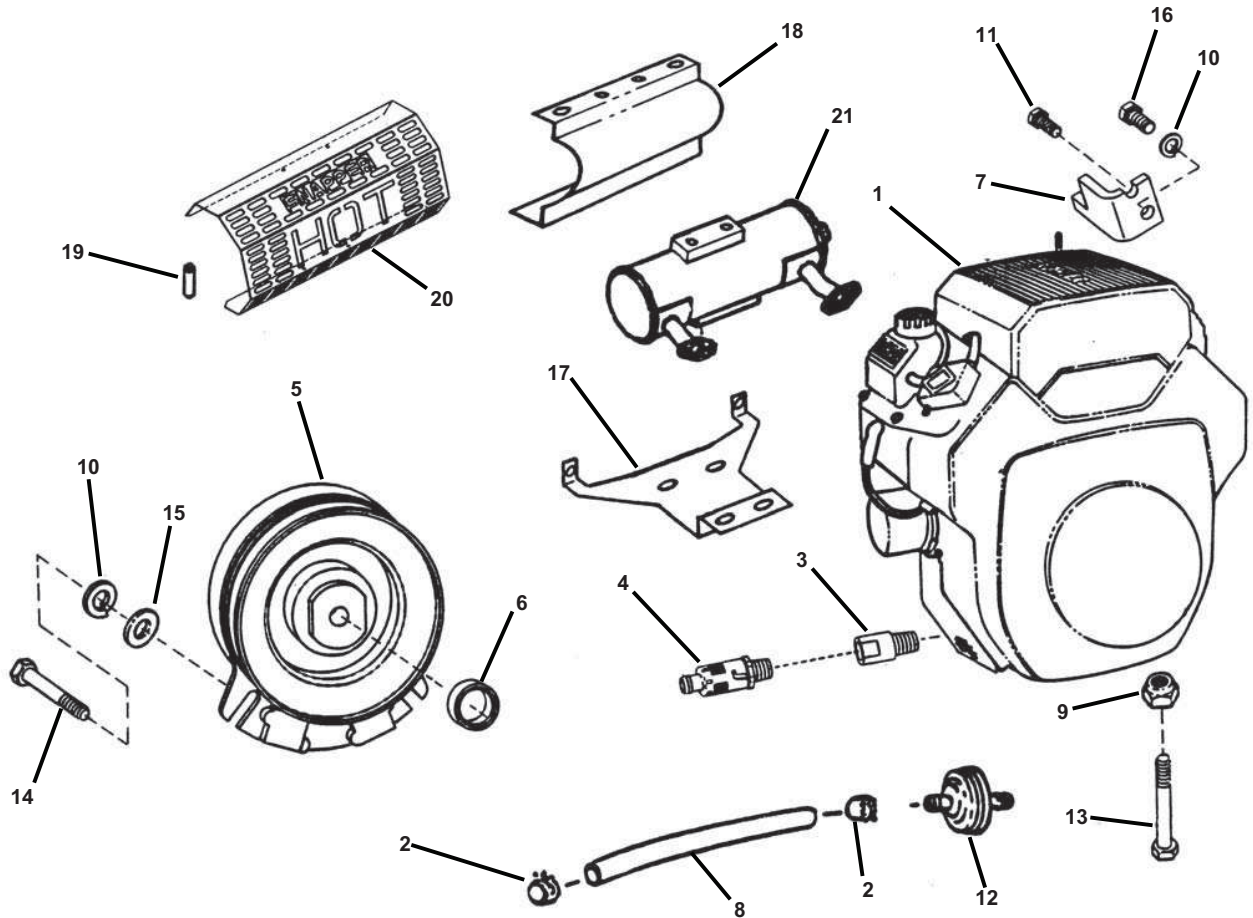
<u>DESCRIPTION</u>	<u>PAGE</u>
FUEL TANK ASSEMBLY .....	3
ENGINE ASSEMBLY.....	4
AIR INTAKE ASSEMBLY .....	5
TANDEM HYDRO TRANSAXLE ASSEMBLY.....	6 & 7
DRIVE TIRE/WHEEL ASSEMBLY .....	8
FOOTREST ASSEMBLY.....	9
HYDRO RESERVOIR ASSEMBLY .....	10
UPPER CHASSIS AND SEAT LATCH ASSEMBLY .....	11
LOWER CHASSIS/CASTER WHEEL ASSEMBLY.....	12 & 13
JOYSTICK CONTROL ASSEMBLY.....	14 & 15
PARKING BREAK ASSEMBLY .....	16 & 17
SEAT SUPPORT ASSEMBLY.....	18
FENDER/CONTROL CABLE ASSEMBLY.....	19
UPPER DRIVE SHAFT ASSEMBLY .....	20 & 21
DECK DRIVE SHAFT ASSEMBLY.....	22 & 23
CUTTER HOUSING ASSEMBLY .....	24
TRACTION DRIVE IDLER ASSEMBLY .....	25
DECALS.....	26 & 27
52" MOWER DECK COMPONENTS .....	28 - 31
61" MOWER DECK COMPONENTS .....	32 - 35
73" MOWER DECK COMPONENTS .....	36 - 39
52 & 61" DECK IDLER ASSEMBLIES.....	40 & 41
73" DECK FRAME ASSEMBLY.....	42 & 43
73" DECK FRONT CASTER ASSEMBLY.....	44 & 45
SEAT ASSEMBLY.....	46 & 47
ELECTRICAL COMPONENTS (except wiring).....	48 & 49
ELECTRICAL COMPONENTS (wiring).....	50
WIRING SCHEMATIC.....	51

# FUEL TANK ASSEMBLY



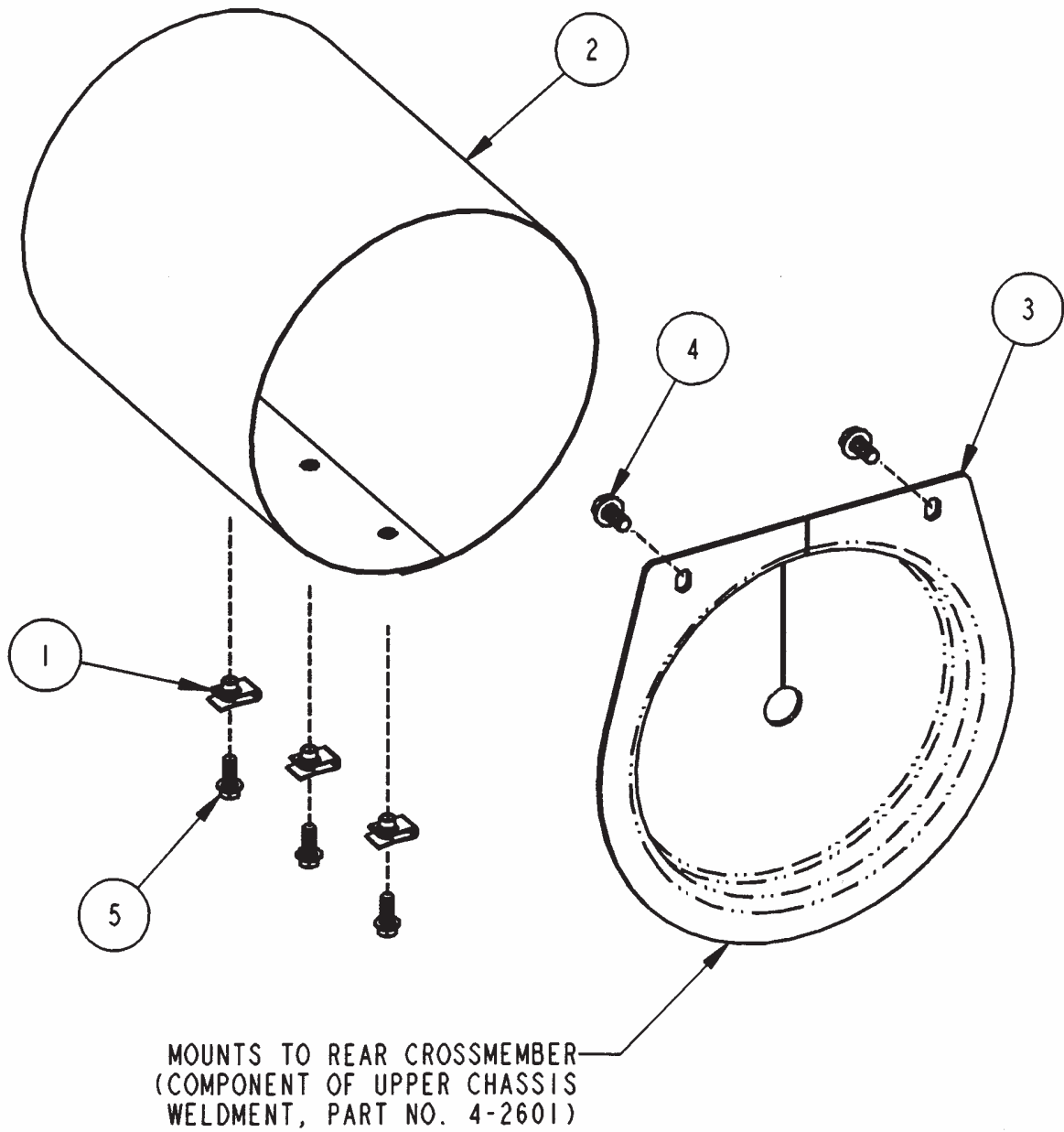
ITEM	PART NO.	DESCRIPTION
1	1-3847	RETAINER, 3/8 Bolt (2)
2	5-4098	TANK, Fuel (Includes items 4 & 11)
3	3-5504	BRACKET, Fuel Tank Support
4	5-4119	ASSEMBLY, Cap/Gauge
5	9-1640	BOLT, 3/8-16 x 1" Square Neck Carriage, Grade 5 (3)
6	9-1299	NUT, 3/8-16 Nyloc (3)
7	1-2222	CLAMP, Fuel Hose (4)
8	3-5853	HOSE, Fuel 1/4 x 4"
9	4-4777	FILTER, Fuel
10	4-5282	HOSE, Fuel 1/4 x 24"
11	5-4120	ASSEMBLY, Fuel Suction Line
12	7-7345	PAD (3)

# ENGINE SUB-ASSEMBLY



ITEM	PART NO.	DESCRIPTION
1	---	ENGINE, 25 HP (Kohler Part No. CH25S PS-68669)
2	1-2222	CLAMP, Fuel Hose (2)
3	2-2486	OIL DRAIN, Short
4	2-7972	ASSEMBLY, Oil Valve
5	5-8925	CLUTCH, Warner Electric
6	3-5675	SPACER, Clutch
7	3-5852	BRACKET, Anti-Rotation
8	3-5853	HOSE, Fuel 1/4 x 4"
9	9-1299	NUT, 3/8-16 Nyloc (4)
10	9-1301	WASHER, 7/16" Split Lock (2)
11	9-1304	SCREW, 3/8-16 x 1" Hex Head Cap, Grade 5
12	1-4359	FILTER, Fuel (in-line)
13	9-1553	SCREW, 3/8-16 x 1-3/4" Hex Head Cap, Grade 5 (4)
14	9-1763	SCREW, 7/16-20 x 1-1/2" Hex Head Cap Grade 5
15	9-1807	WASHER, 15/32 I.D. x 1-3/8 O.D. x 1/4 Flat
16	9-1808	SCREW, 7/16-14 x 1", Grade 5
17	4-6486	BRACKET, Muffler 25 HP Kohler
18	4-6487	SHIELD, Heat 25 HP Kohler
19	7-2256	SPACER, Muffler Guard
20	7-2155	GUARD, Muffler "Snapper"
21	---	MUFFLER, 25 HP (Kohler Part No. A-24 068 17)

# AIR INTAKE ASSEMBLY



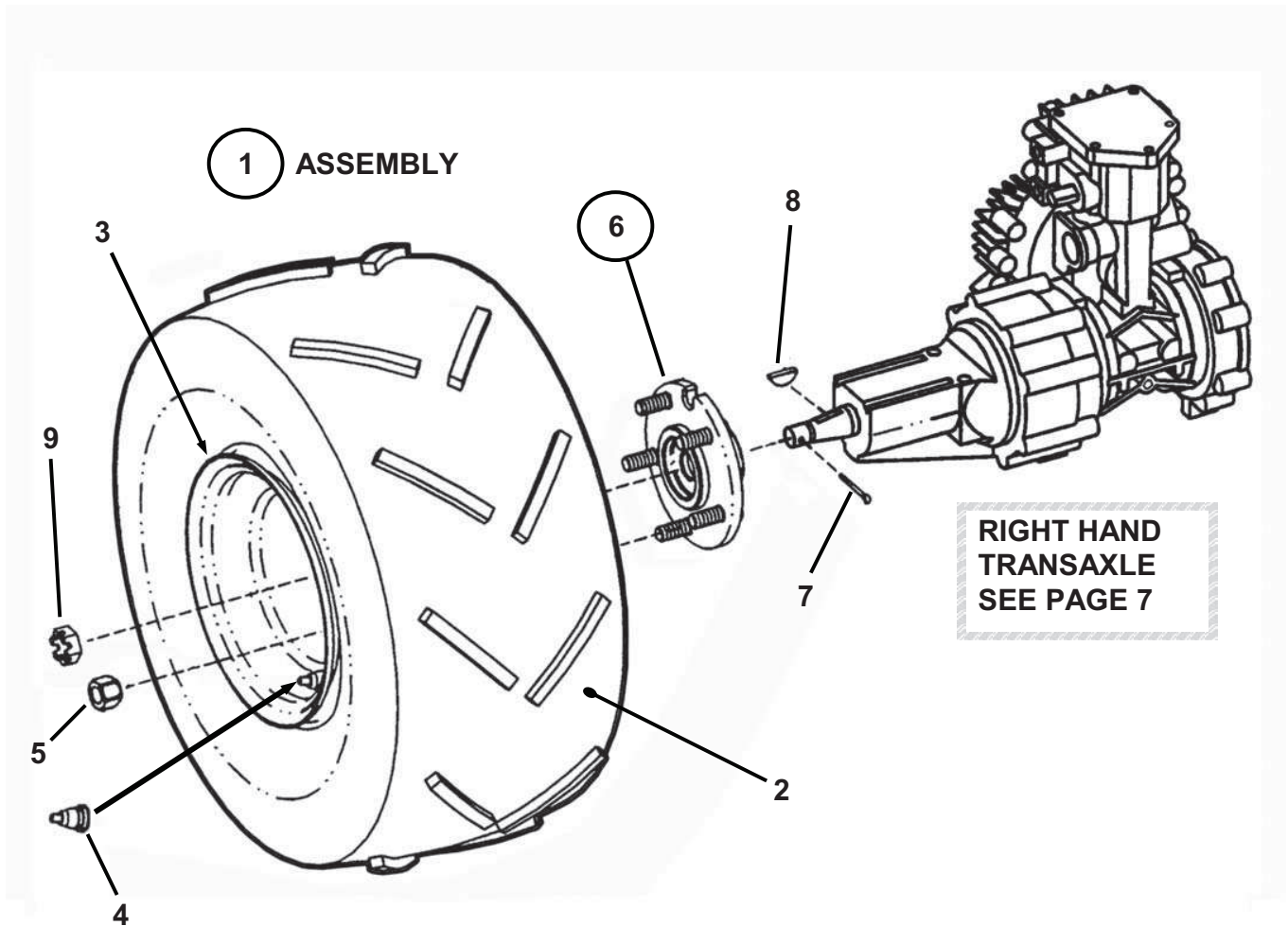
ITEM	PART NO.	DESCRIPTION
1	2-3295	U-NUT, 1/4-20 (3)
2	3-5767	SCREEN, Air Intake
3	3-5768	MOUNT, Air Intake
4	9-0361	SCREW, 5/16-18 x 5/8" Self-Tapping (2)
5	9-1787	SCREW, 1/4-20 Hex Flange Lock (3)



## TANDEM HYDRO TRANSAXLE ASSEMBLY

ITEM	PART NO.	DESCRIPTION
1	1-0935	WASHER, 3/4 I.D. x 1-1/8" O.D. Flat (7)
2	1-2709	RETAINING RING, 1" External (2)
3	1-4264	WOODRUFF KEY, #404 (2)
4	1-5894	WOODRUFF KEY, #605 (2)
5	1-8978	FAN, 10 Blade 7" Dia. (2)
6	2-7175	BOLT, 5/16-18 x 2-1/2" Hex Head (2)
7	2-7223	WASHER, 1/4 Split Lock (4)
8	9-1814	SCREW, 1/4-20 x 1-1/4", Hex Head Cap (3)
9	5-9156	ASSEMBLY, Transaxle 771-108 (R.H.) (shown)
--	5-9155	ASSEMBLY, Transaxle 771-107 (L.H.)
10	3-5547	PULLEY, Transmission Input (2)
11	7-2017	SPACER, Eaton Transaxle (8)
12	3-5910	PLATE, Neutral Adjust (2)
13	3-5915	SPRING, Neutral Return Adjust (2)
14	3-5923	SPACER/ADAPTER, Fan
15	3-5925	ROD, Roll Release (2)
16	3-5927	SPRING, Neutral Return (2)
17	4-2612	SPACER, Fan (Weldment) (2)
18	4-2639	CAM, Neutral Return (Weldment) (2)
19	5-9441	PLATE, Neutral Return (2)
20	1-5753	BALL-JOINT (4)
21	9-0201	SET SCREW, 5/16-18 x 5/16" Hex Recess (4)
22	9-1299	NUT, 3/8-16, Hex Nyloc (4)
23	9-0122	WASHER, 3/8 SAE Flat (4)
24	9-1603	NUT, 1/4-20 Hex Nyloc (8)
25	9-1627	WASHER, 1/4 I.D. x 1" O.D. (2)
26	9-1629	COTTER-PIN, 1/16 x 1/2" (2)
27	9-1786	BOLT, 3/8-16 x 4-3/4" Grade 5 (4)
28	9-1787	SCREW, 1/4-20 x 5/8" Hex Flange Lock, Grade 5 (8)
29	9-1811	BOLT, 5/16-18 x 5/8", Hex Flange Lock (4)
30	9-1812	NUT, 1/4-28, Hex Nyloc (4)
31	9-0505	SCREW, 1/4-20 x 2", Hex Head Cap, Grade 5
32	3-5914	ROD, Threaded 1/4-28 x 5-3/8"
33	3-5916	ROD, Threaded 1/4-28 x 4-3/8"
34	9-1605	NUT, 1/4-28 Hex, Grade 5 or B (4)
35	4-2715	FILTER, Oil (EATON No. 103144)

# DRIVE TIRE/WHEEL ASSEMBLY



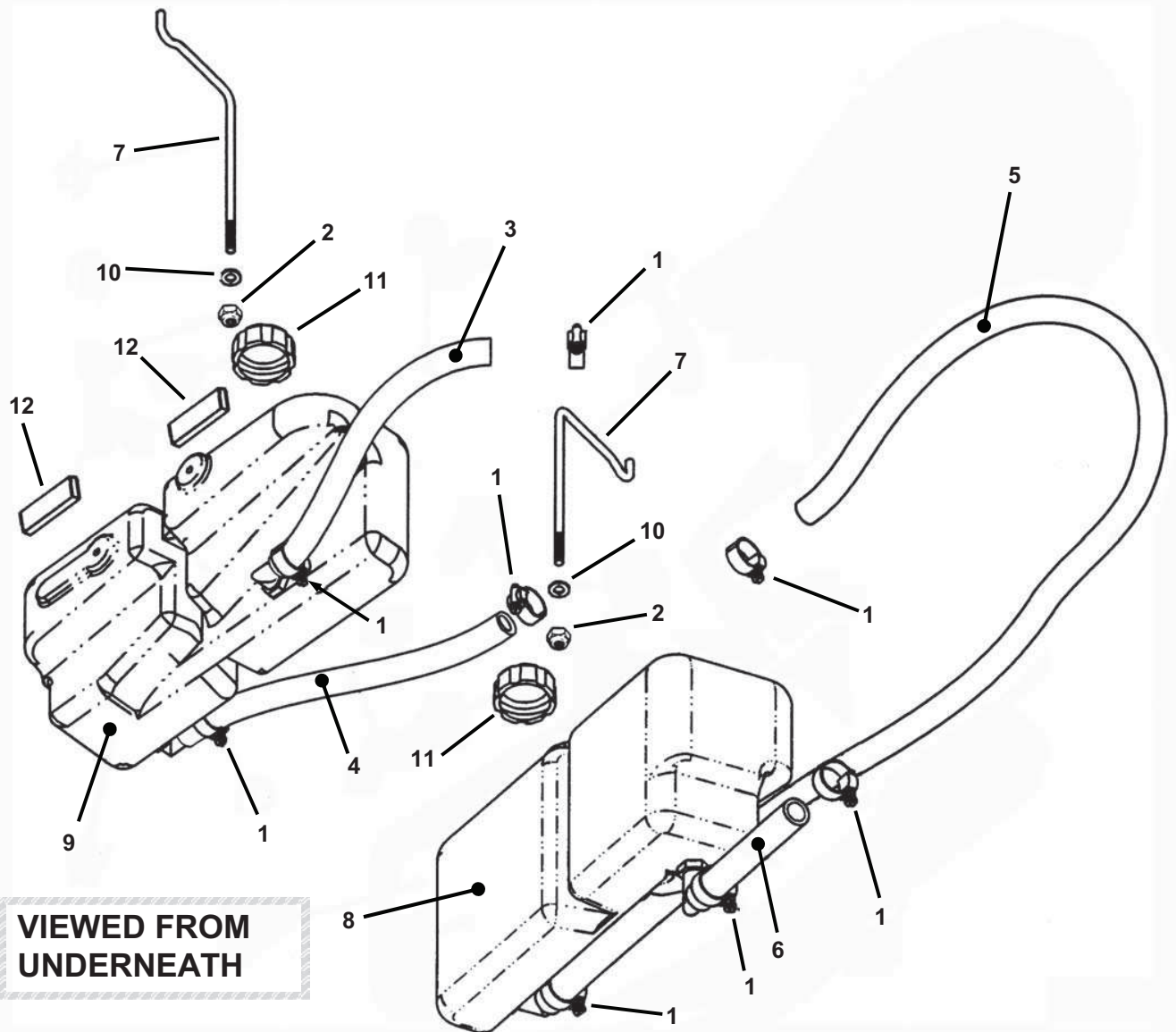
ITEM	PART NO.	DESCRIPTION
1	5-4509*	ASSEMBLY, Rear Tire & Rim, Left Hand (Not Shown)
--	5-4510*	ASSEMBLY, Rear Tire & Rim, Right Hand (Shown)
2	4-4707	TIRE, 21 x 10.00-8 4 ply "All Terrain"
3	5-4111	RIM, 8" Dia. X 7-3/4"
4	1-2234	VALVE, Air
5	2-7192	NUT, 1/2-20 Lug (10)
6	5-4461	ASSEMBLY, Wheel Hub
7	9-1793	PIN, Cotter, 9/64 x 1-1/2 (2)
8	9-1978	KEY, #806 Woodruff
9	9-1828	NUT, 3/4-20 Slotted Hex

**\*NOTE:** Includes Items 2, 3 & 4.



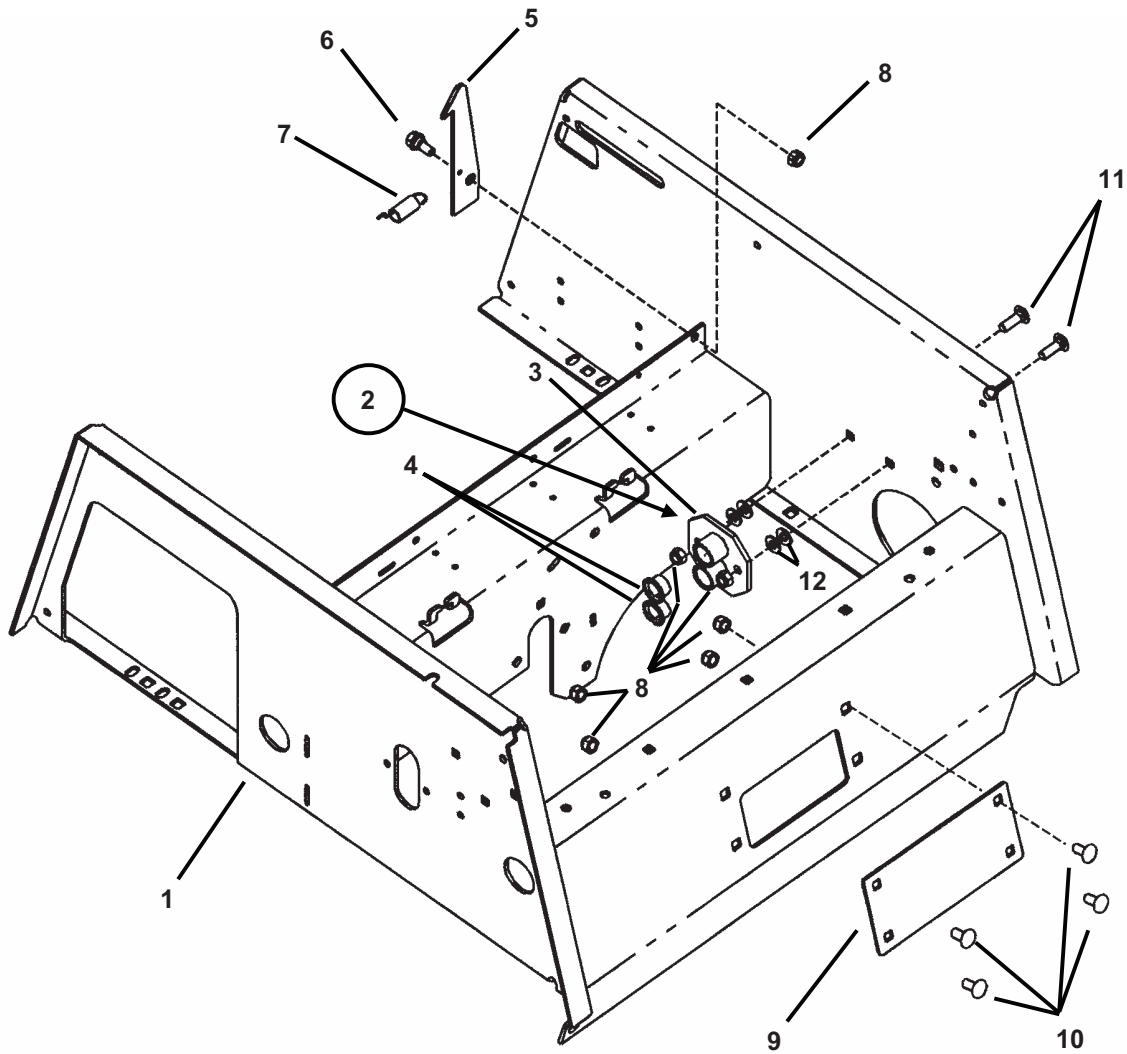


## HYDRO RESERVOIR ASSEMBLY



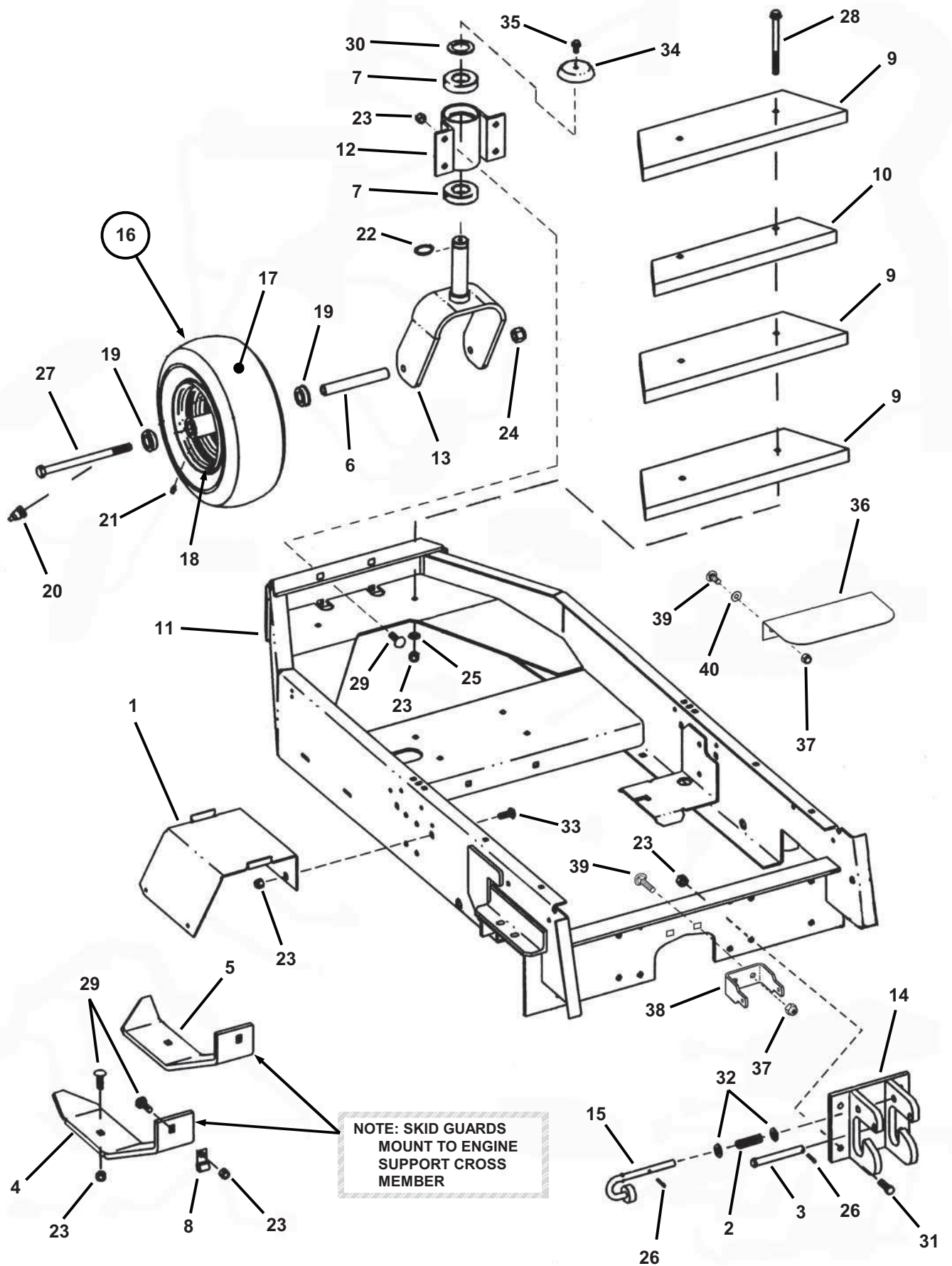
ITEM	PART NO.	DESCRIPTION
1	1-6130	CLAMP, Hose 13/16" (8)
2	9-1298	NUT, 5/16-18 Nyloc (2)
3	3-5514	HOSE, Rubber R.H. Front (.625 I.D. x 13-1/2" Long)
4	3-5515	HOSE, Rubber R.H. Back (.625 I.D. x 16" Long)
5	4-1834	HOSE, Rubber (.625 I.D. x 34" Long)
6	4-1833	HOSE, Rubber (.625 I.D. x 6" Long)
7	3-5639	BRACKET, Reservoir (2)
8	5-4703	RESERVOIR, L.H. Hydro (includes cap, item 11)
9	5-4103	RESERVOIR, R.H. Hydro (includes cap, item 11)
10	9-1296	WASHER, 11/32 I.D. x 11/16" O.D. (2)
11	3-5512	CAP, Reservoir
12	7-7345	PAD (2)

## UPPER CHASSIS AND SEAT LATCH ASSEMBLY



ITEM	PART NO.	DESCRIPTION
1	5-8770	WELDMENT, Upper Chassis
2	5-8766	ASSEMBLY, Bushing Support (incl. items 3 & 4)
3	5-8768	WELDMENT, Bushing Support
4	7-2934	BUSHING, 5/8" (Teflon Impregnated) (2)
5	7-2106	LATCH, Seat Support
6	1-5761	BOLT, 5/16-18 Shoulder
7	2-6292	SPRING
8	9-1298	NUT, 5/16-18 Hex Nyloc (7)
9	7-3277	PLATE, Cover
10	9-1508	BOLT, 5/16-18 x 3/4" Carriage (4)
11	9-1714	BOLT, 5/16-18 X 1" Square Neck Carriage, Grade 5 (2)
12	9-1296	WASHER, 5/16" Flat (4)

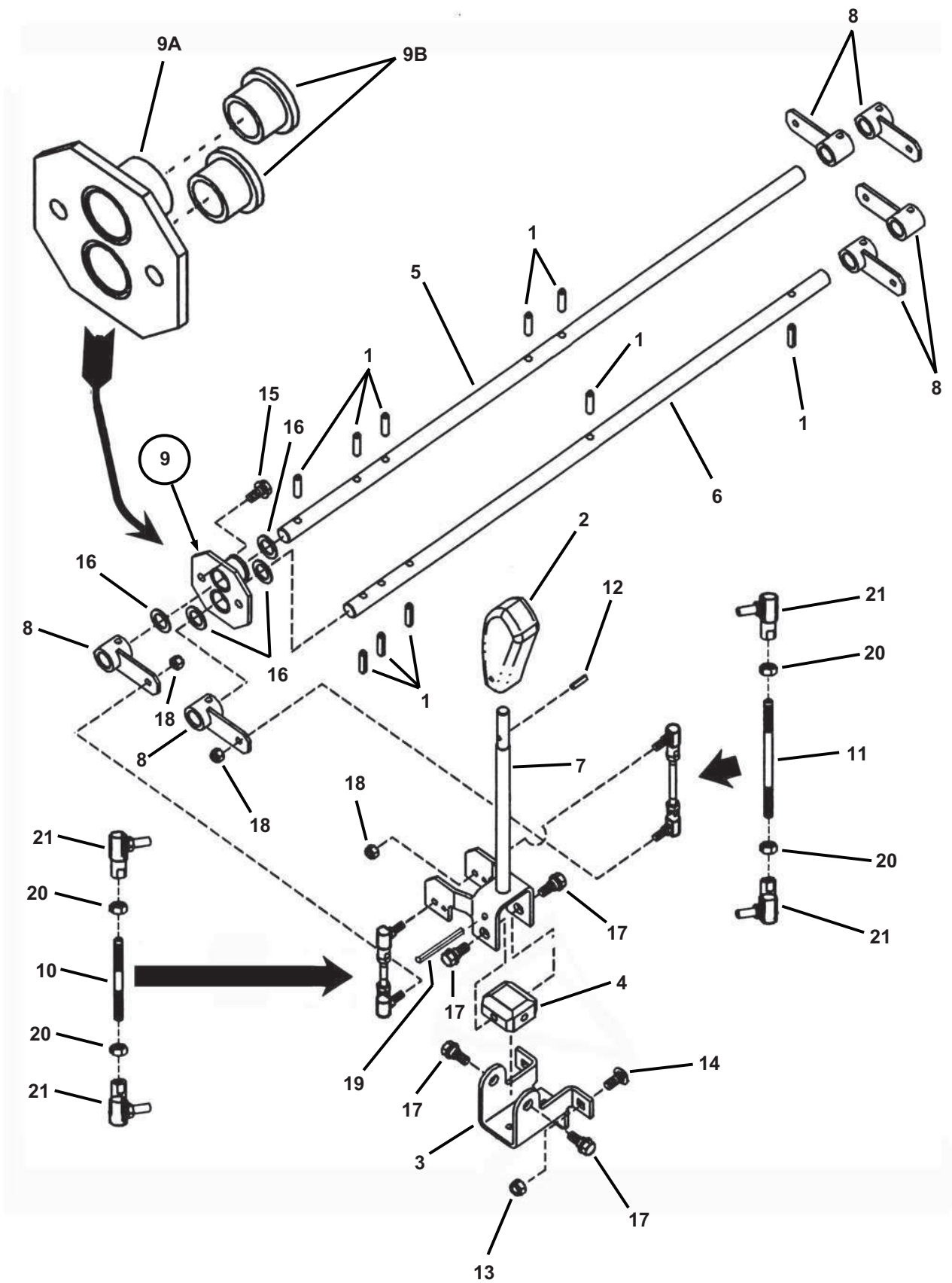
# LOWER CHASSIS/CASTER WHEEL-ASSEMBLY



## LOWER CHASSIS/CASTER WHEEL-ASSEMBLY

ITEM	PART NO.	DESCRIPTION
1	3-6406	BRACKET, Battery Support
2	1-4432	SPRING (2)
3	2-9074	PIN, Clevis 1/2 x 4" (2)
4	4-6968	SKID GUARD, R.H.
5	7-2827	SKID GUARD L.H.
6	3-5476	SLEEVE, Axle
7	3-5602	BEARING, 30mm x 62mm (2)
8	3-5638	J-CLIP, Open Cushioned (2)
9	7-4562	COUNTERWEIGHT, Large (6)
10	7-4563	COUNTERWEIGHT, Small (2)
11	4-2589	CHASSIS, Lower
12	4-2590	WELDMENT, Caster Support
13	4-2591	WELDMENT, Caster Yoke
14	4-2628	WELDMENT, Hitch Plate (2)
15	4-2629	WELDMENT, Hitch Pin (2)
16	5-4087	ASSEMBLY, Tire & Rim (Includes Items 17 thru 21)
17	3-5474	TIRE, 13 x 5.00-6 4 Ply
18	3-5475	RIM
19	2-8722	BEARING (2)
20	1-2234	VALVE, Air
21	1-2700	FITTING, Lube
22	1-0965	RING, 1-3/16" External Retaining
23	9-1299	NUT, 3/8-16 Hex Nyloc (20)
24	9-1325	NUT, 1/2-13 Nyloc
25	9-1514	WASHER, 13/32 I.D. x 13/16 O.D., Flat (2)
26	9-1598	PIN, Cotter, 1/8 x 3/4" (4)
27	9-1773	SCREW, 1/2-13 x 7-1/4, Grade 5
28	9-1786	BOLT, 3/8-16 x 4-3/4", Grade 5 (2)
29	9-1790	BOLT, 3/8-16 x 1-1/4", Carriage, Grade 5 (8)
30	9-1795	WASHER, 1-1/4 I.D. x 1-7/8 O.D. Flat
31	9-1328	SCREW, 3/8-16 x 1-1/4", Hex Head Cap, Gr. 5 (8)
32	9-1595	WASHER, 15/32 I.D. x 15/16" O.D. Flat (4)
33	9-1640	BOLT, 3/8-16 x 1" Carriage, Grade 5 (4)
34	3-6578	CAP, Caster Shaft
35	9-0361	SCREW, 5/16-18 x 5/8" Self Tapping
36	4-2777	SHIELD, Grass
37	9-1299	NUT, 3/8-16 Hex Nyloc (6)
38	7-3276	BRACKET, Cylinder
39	2-7181	BOLT, 3/8-16 x 1-1/4" Short Neck Carriage, Grade 5 (4)
40	1-3847	RETAINER, 3/8" Bolt (2)

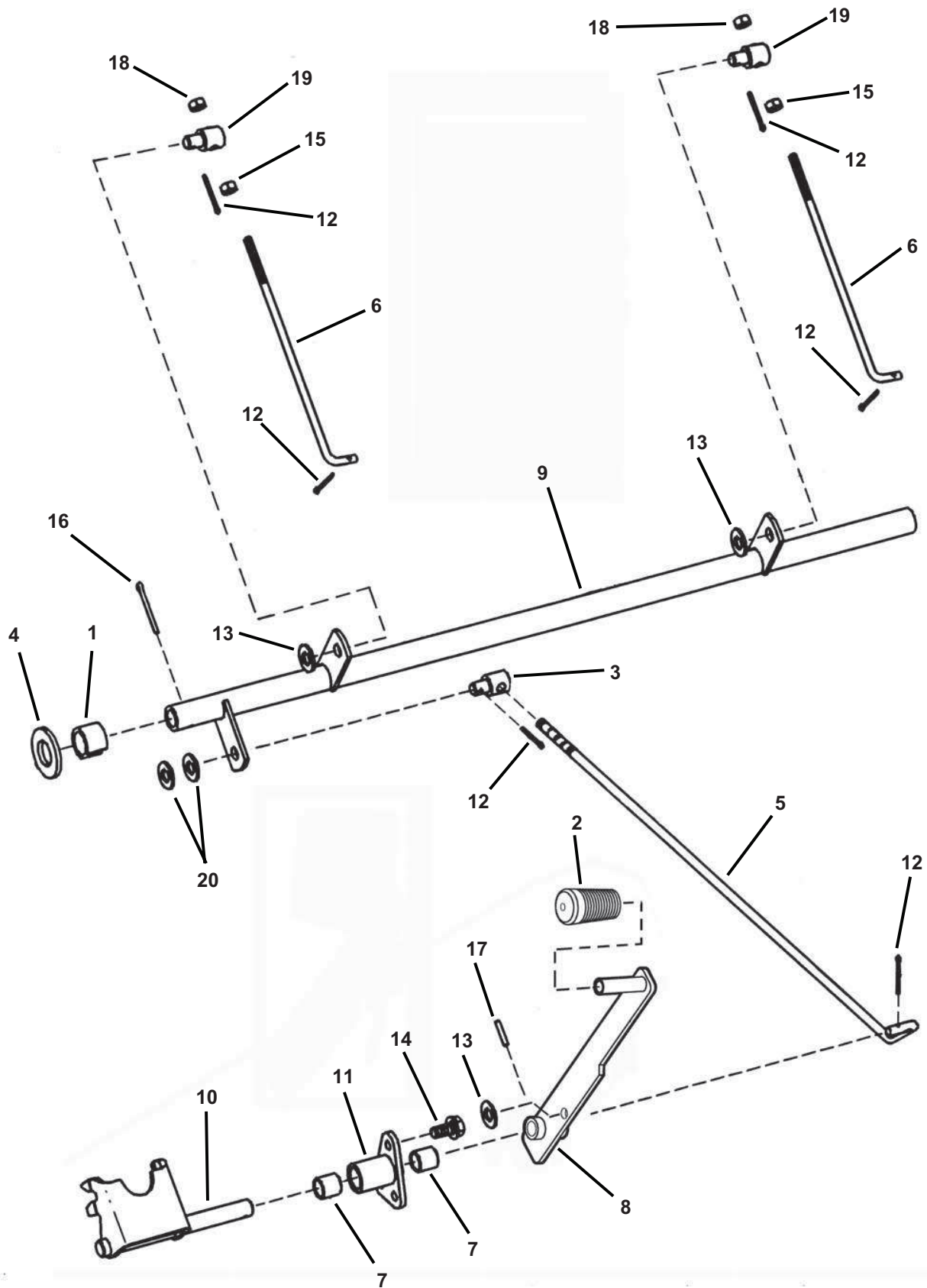
# JOYSTICK CONTROL ASSEMBLY



## JOYSTICK CONTROL ASSEMBLY

ITEM	PART NO.	DESCRIPTION
1	1-3072	ROLL PIN, 1/4 x 1" (10)
2	2-3656	HANDLE, Plastic
3	3-5532	BRACKET, Joystick Mounting
4	3-5533	BLOCK, Pivot J-Stick Control
5	7-3274	SHAFT, Upper Cross
6	7-3275	SHAFT, Lower Cross
7	4-2599	WELDMENT, Joystick Control Handle
8	4-2638	WELDMENT, Arm/Hub (6)
9	5-8766	ASSEMBLY, Cross Shaft Support (includes one 9A and two 9B)
9A	5-8768	WELDMENT, Cross Shaft Support
9B	7-2934	BUSHING, Teflon Impregnated (2)
10	3-5908	ROD, Threaded 1/4-28 x 2.71 long
11	3-5909	ROD, Threaded 1/4-28 x 3.85 long
12	9-0844	ROLL PIN 3/16 x 3/4"
13	9-1298	NUT, 5/16-18 Hex Nyloc (3)
14	9-1508	BOLT, 5/16-18 x 3/4" Carriage, Grade 5 (3)
15	9-1523	SCREW, 5/16-18 x 5/8" Hex Washer Self-Tap (4)
16	9-1628	WASHER, 41/64 I.D. x 1" O.D. Flat (4)
17	9-1800	BOLT, 5/16-18 Shoulder (4)
18	9-1812	NUT, 1/4-28 Hex Nyloc (4)
19	9-1816	ROLL PIN, 1/4 x 2-3/4"
20	9-1605	NUT, 1/4-28 Hex, Grade 5 or B (4)
21	1-5753	BALL-JOINT (4)

# PARKING BRAKE ASSEMBLY

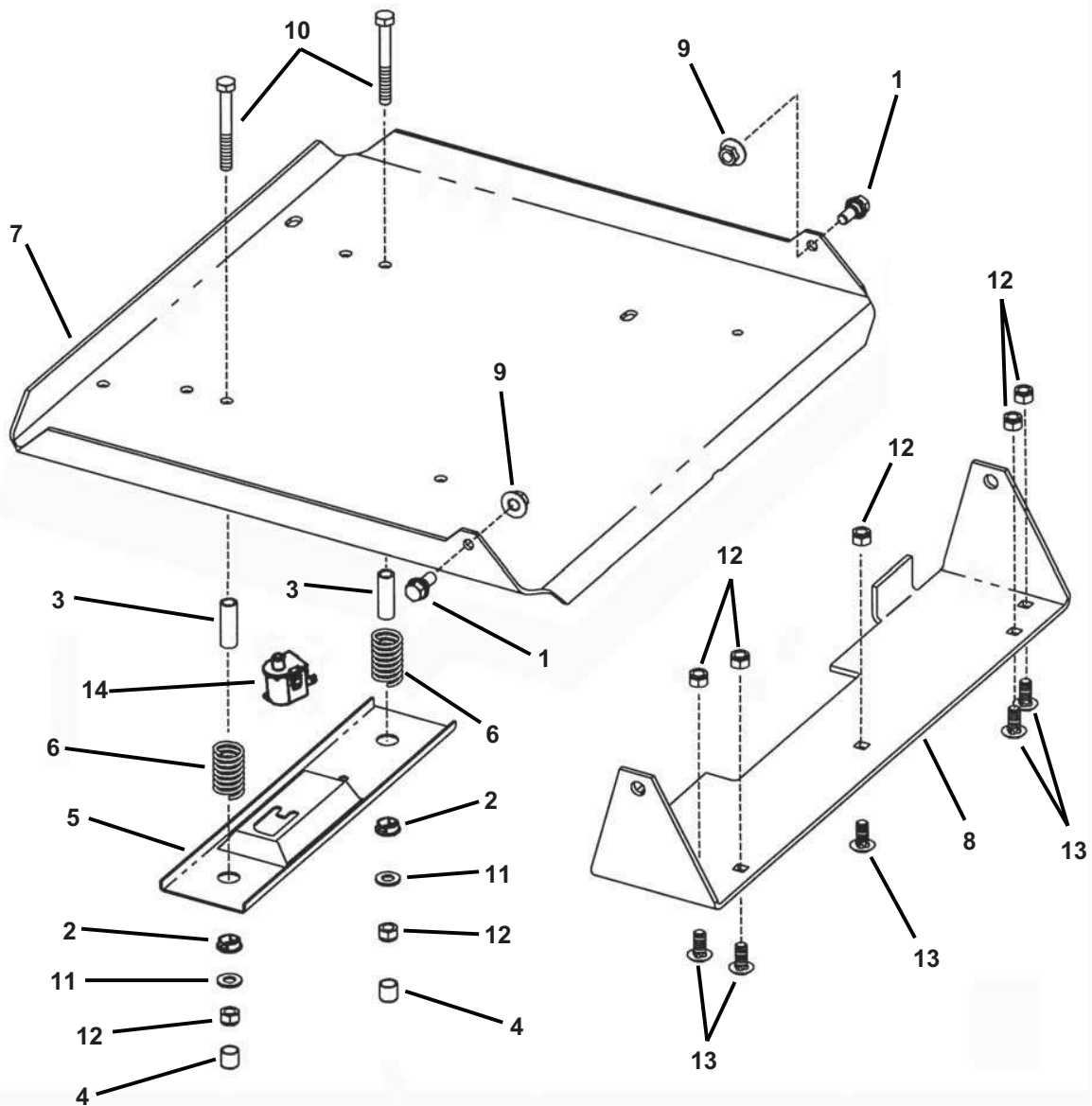




## PARKING BRAKE ASSEMBLY

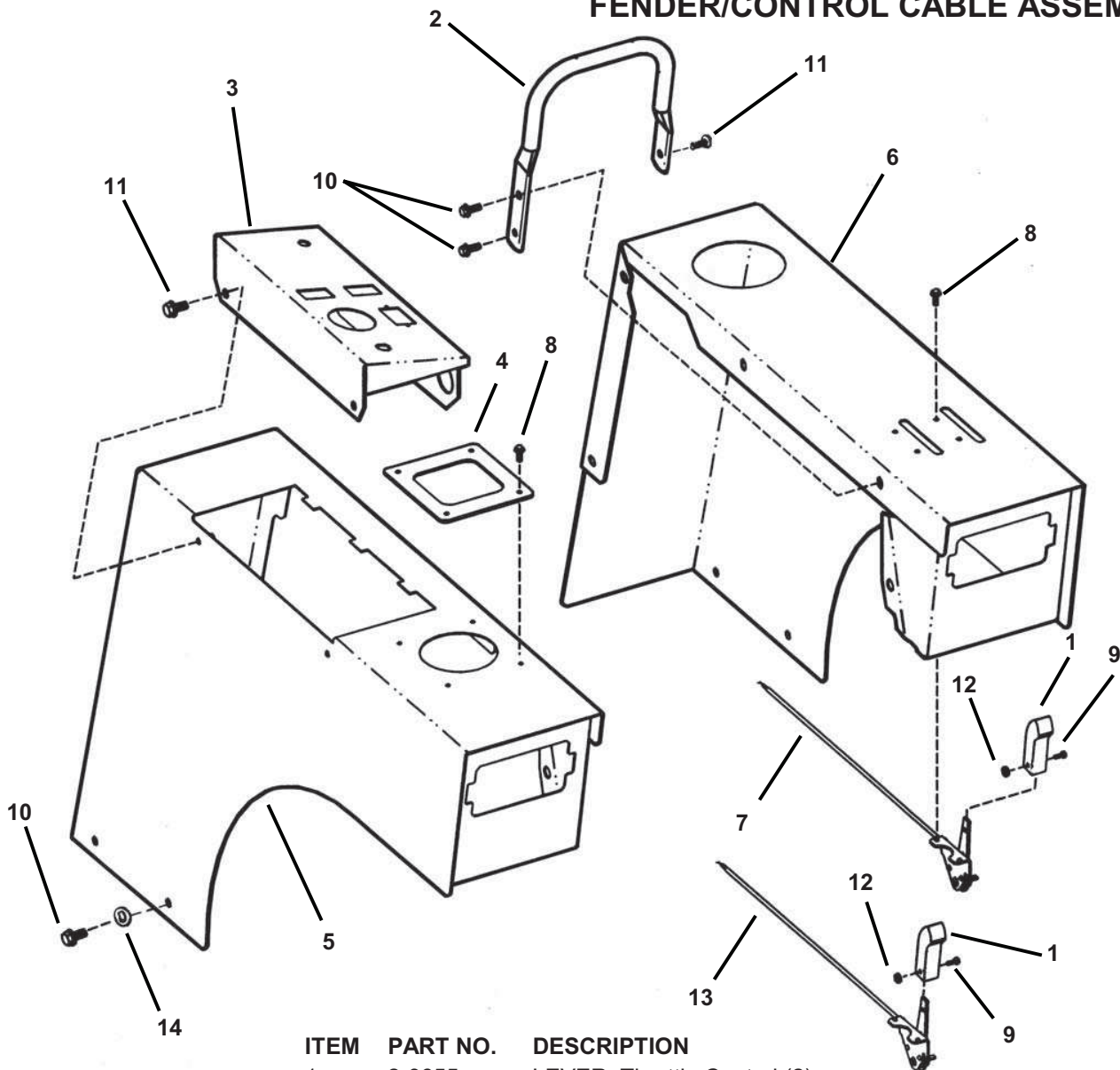
ITEM	PART NO.	DESCRIPTION
1	1-2068	RING, Rear Lift Arm
2	7-2222	GRIP, Park Brake Lever
3	4-6451	SWIVEL, Adjustable (3/8-24 thread)
4	3-4453	WASHER, 3/4 I.D. x 1-1/2 O.D. x 9/64" Flat
5	4-6456	ARM, Brake Lift (3/8-24 thread)
6	3-5888	ROD, Hydrostatic Brake (1/4-28 thread) (2)
7	3-6399	SLEEVE Bearing, 1/2 I.D. x .629 (2)
8	5-8729	WELDMENT, Parking Brake Arm
9	4-2635	WELDMENT, Brake Shaft
10	4-2647	WELDMENT, Joystick Lockout Bracket
11	4-2648	WELDMENT, Support Plate
12	9-1597	COTTER-PIN, 3/32 x 3/4" (6)
13	9-0122	WASHER, 3/8" Flat (3)
14	9-1523	SCREW, 5/16-18 x 5/8" Hex Washer Face Self-Tap (3)
15	9-1605	NUT, 1/4-28 Hex, Grade 5 (2)
16	9-1809	COTTER PIN, 1/8 x 1-1/4"
17	1-4001	PIN, Roll 1/8 x 3/4"
18	9-1812	NUT, 1/4-28 Hex Nyloc (2)
19	9-1832	SWIVEL, 1/4" Smooth (2)
20	9-0692	WASHER, 5/16" Flat (2)

# SEAT SUPPORT ASSEMBLY



ITEM	PART NO.	DESCRIPTION
1	1-5761	BOLT, 5/16-18 Shoulder (2)
2	2-2793	BUSHING, Molded Seat, 1/2 I.D., 5/8" O.D. (2)
3	2-2794	SPACER, .31 I.D., 1-3/8" Long (2)
4	2-3606	CAP, Vinyl, 1/4 I.D. x 1/5 O.D. (2)
5	3-3362	HOLDER, Seat Switch
6	9-2007	SPRING (2)
7	7-2015	PLATE, Seat Mount
8	7-2034	BRACKET, Seat Hinge
9	9-0951	NUT, 5/16-18 Hex Large Flange Center Lock (2)
10	9-1046	SCREW, 5/16-18 x 2-1/2" Hex Head Cap, Grade 5 (2)
11	9-1296	WASHER, 5/16 x 11/16 O.D. Flat (2)
12	9-1298	NUT, 5/16-18 Hex Nyloc (7)
13	9-1508	BOLT, 5/16-18 x 3/4 Short Neck. Carriage, Grade 5 (5)
14	2-3354	SWITCH, Seat (Normally Closed)

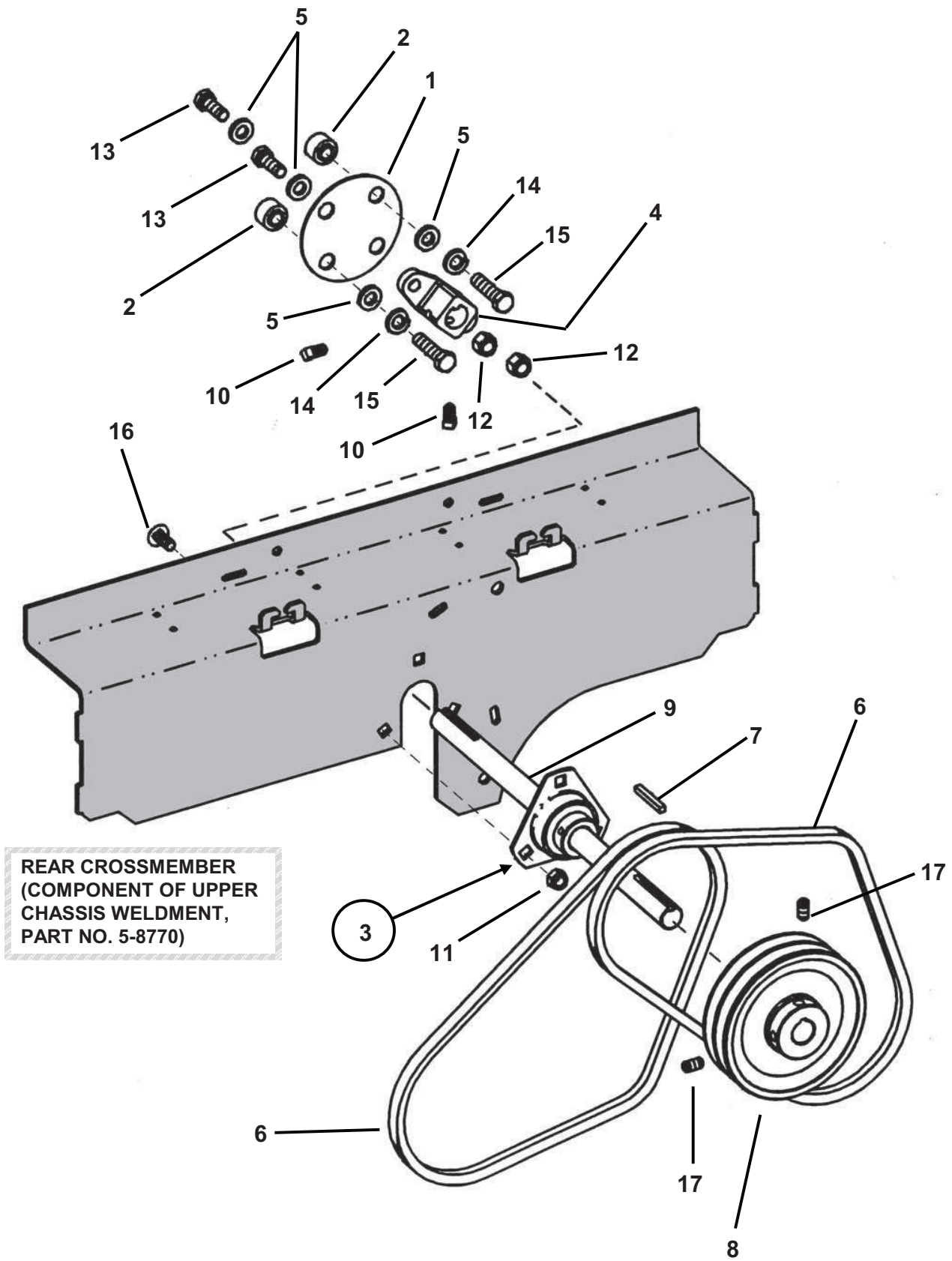
## FENDER/CONTROL CABLE ASSEMBLY



ITEM	PART NO.	DESCRIPTION
1	2-3655	LEVER, Throttle Control (2)
2	3-5548	HANDLE, 5/8" Tubing
3	3-5701	PANEL, Console
4	3-5940	PLATE, Joystick Control
5	4-2642	FENDER, Right Hand
6	4-2643	FENDER, Left Hand
7	3-5837*	CABLE, Choke (Kohler) (39.5" Long)
8	9-0913	SCREW, #10-24 Hex Washer Face Self-tap (8)
9	9-1017	SCREW, #8-32 x 3/8" Machine (2)
10	9-1523	SCREW, 5/16-18 x 5/8" Hex Washer Face Self-tap (15)
11	9-1787	SCREW, 1/4-20 x 5/8" Hex Flange Lock (3)
12	9-1018	NUT, #8-32 Hex (2)
13	3-5838*	CABLE, Throttle (Kohler) (39.5" Long)
14	9-1130	WASHER, 5/16 I.D. Flat (2)

**\*NOTE: Part number is printed on cable.**

# UPPER DRIVE SHAFT ASSEMBLY

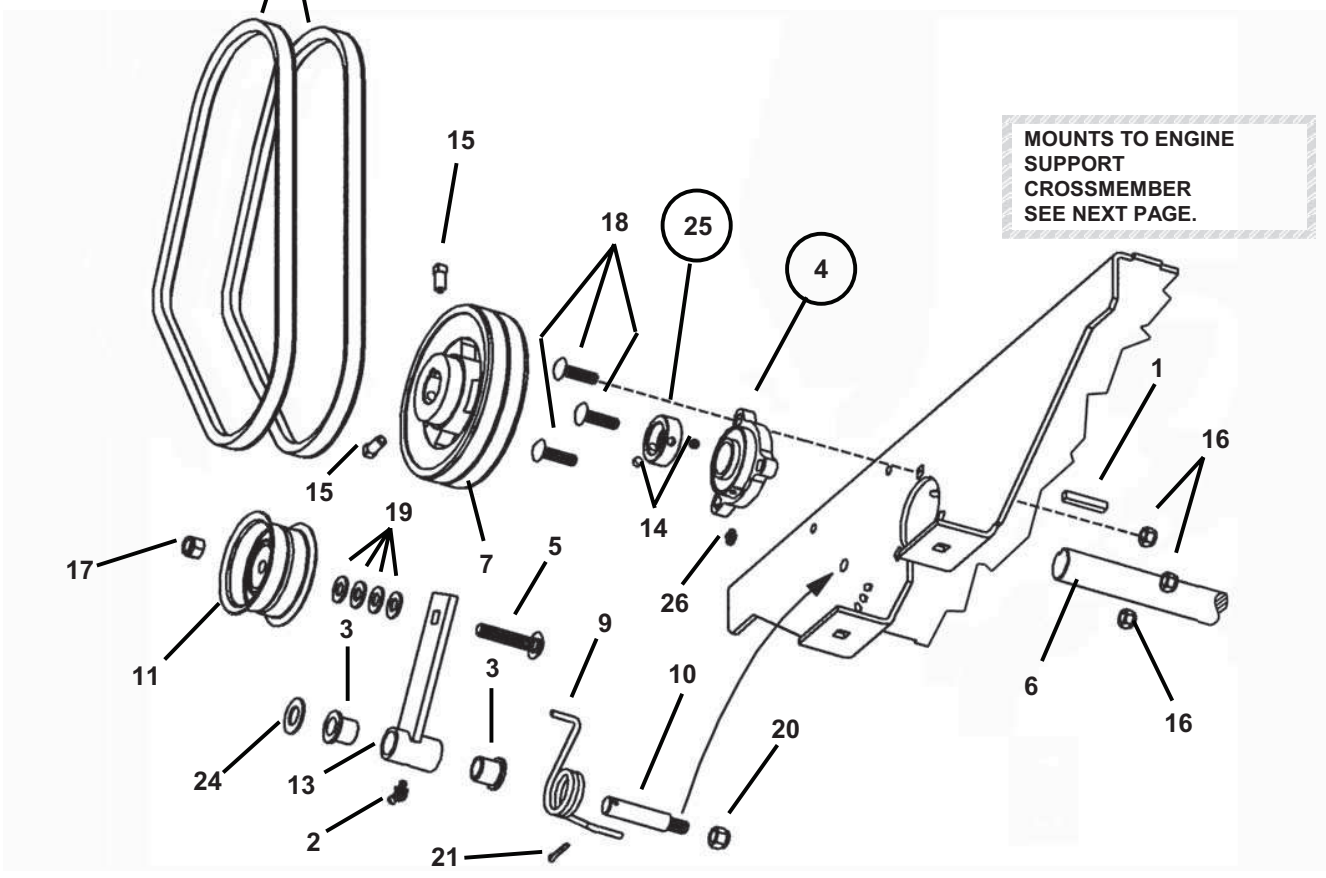
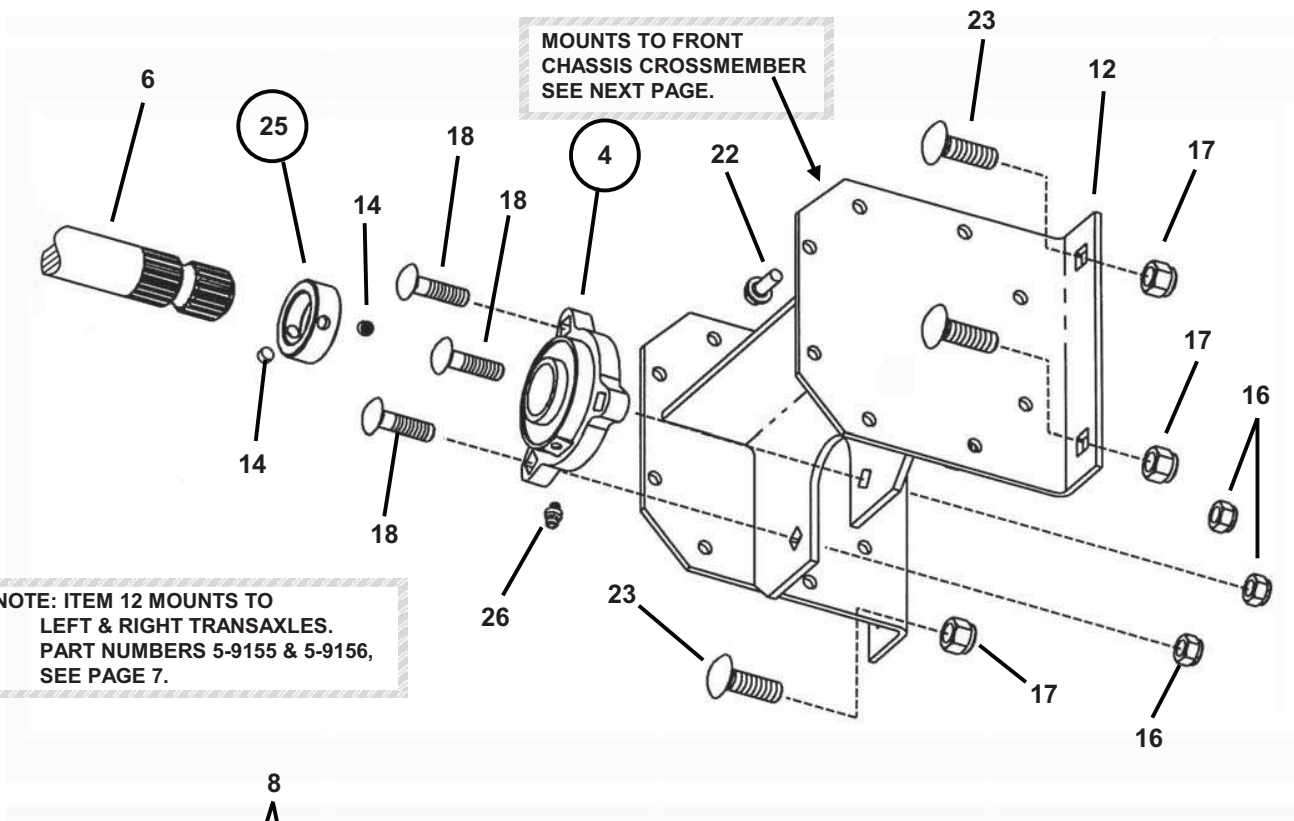


REAR CROSSMEMBER  
(COMPONENT OF UPPER  
CHASSIS WELDMENT,  
PART NO. 5-8770)

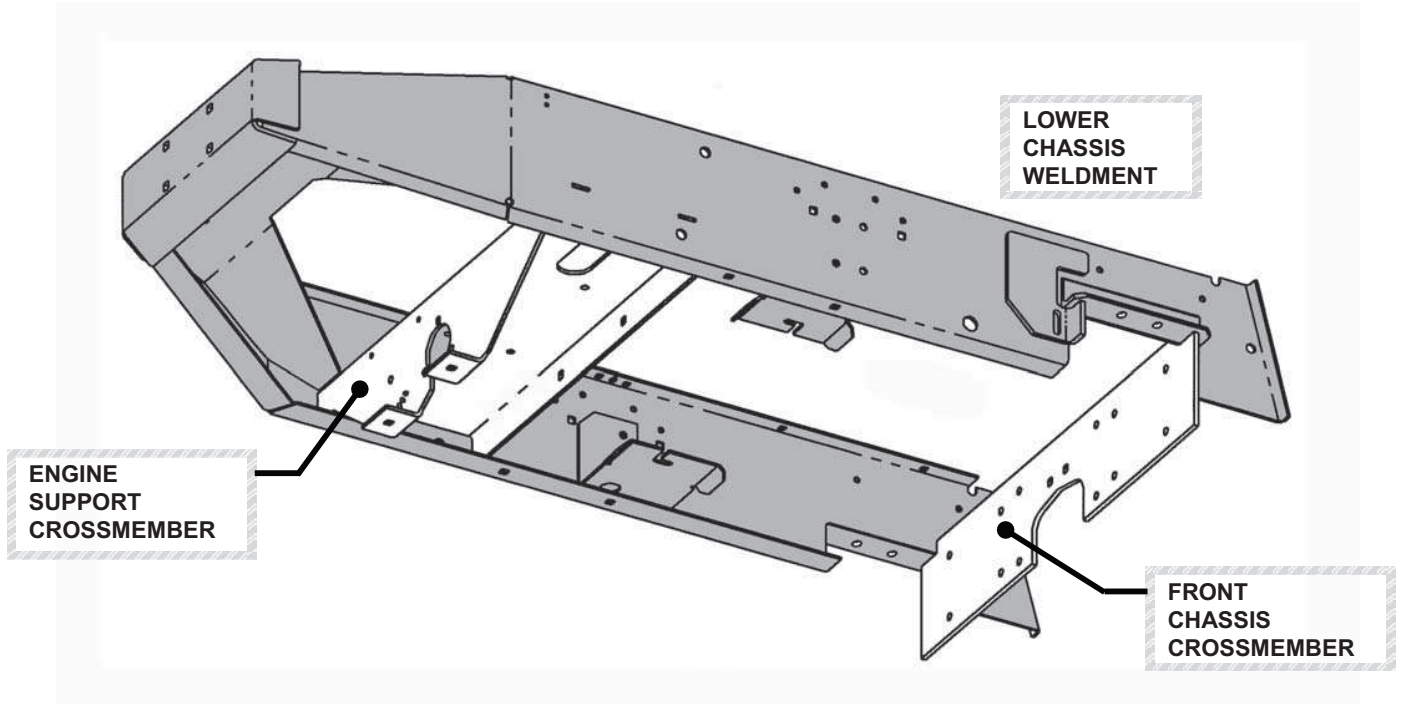
## UPPER DRIVE SHAFT ASSEMBLY

ITEM	PART NO.	DESCRIPTION
1	1-4338	DISC, Flexible
2	1-4803	SPACER, (2)
3	5-4655	ASSEMBLY, Flange/Bearing/Lock Collar (Includes 1-4625, 3/4" Lock Collar w/Set Screw and 4-5246, Flange Bearing)
4	1-8626	HUB, Drive Shaft Adapter
5	3-2070	WASHER, 13/32 I.D. x 3/4 O.D., Flat (4)
6	3-5544	BELT, AX, Cogged, 33.8" Effective Length (2)
7	9-1803	KEY, 3/16" Square x 1-1/2" Long
8	3-5564	PULLEY, Cast Iron Dual V 4.95 Effective O.D. (includes two of item 17)
9	3-5811	UPPER DRIVE SHAFT, 3/4" Diameter
10	9-0848	SET SCREW, 5/16-18 x 1/2" Square Head Cup Point (2)
11	9-1298	NUT, 5/16-18 Hex Nyloc (3)
12	9-1299	NUT, 3/8-16 Hex Nyloc (2)
13	9-1328	SCREW, 3/8-16 x 1-1/4" Hex Head Cap, Grade 5 (2)
14	9-1320	WASHER, 3/8 Split Lock (2)
15	9-1497	SCREW, 3/8-16 x 1-1/2" Hex Head Cap, Grade 5 (2)
16	9-1714	BOLT, 5/16-18 x 1", Square Neck Carriage, Grade 5 (3)
17	9-1802	SCREW, 5/16-18 x 5/8", Socket-Head (2)

# DECK DRIVESHAFT ASSEMBLY

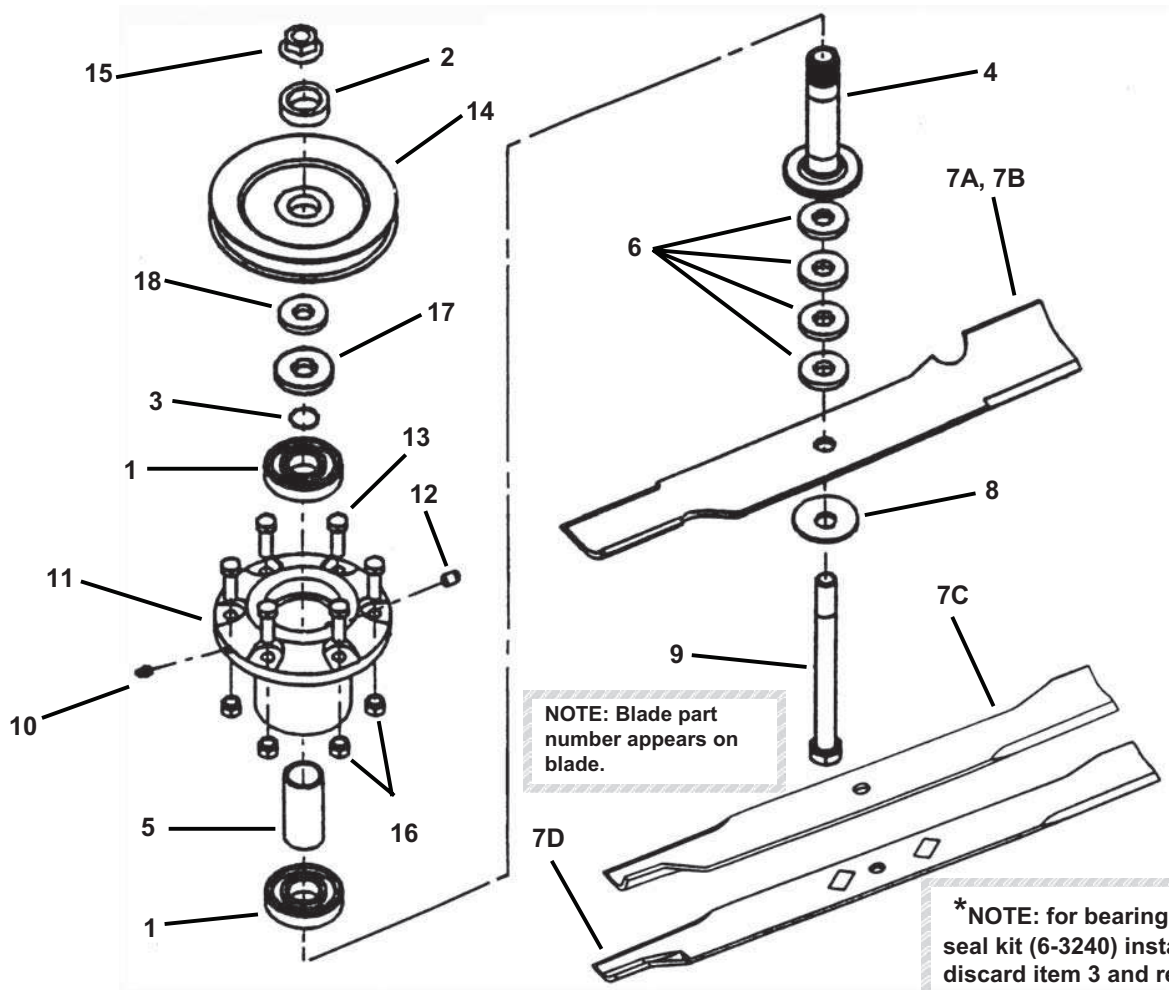


## DECK DRIVESHAFT ASSEMBLY



ITEM	PART NO.	DESCRIPTION
1	1-2315	KEY, 1/4" Square x 2"
2	1-3324	FITTING, Lube (45 degree, for 3/16" hole)
3	1-4409	BUSHING (2)
4	5-4658	ASSEMBLY, Bearing, (includes items 25 & 26) (2)
5	9-0990	BOLT, 3/8-16 x 2" Carriage, Grade 2
6	3-5530	DRIVE SHAFT, Deck (1" Diameter, 15 Spline)
7	3-5531	PULLEY, Double V (5.45 O.D., A Section)
8	3-5543	BELT, Deck Drive (HA 36.5" Eff. Length) (2)
9	3-5713	SPRING, Tension
10	3-5816	PIN, 3/8-24 UNF
11	3-5867	FLAT IDLER, 2.75 O.D. x 1-1/4" Wide
12	4-2610	WELDMENT, Bearing Mount
13	4-2622	IDLER ARM, Straight (Weldment)
14	9-0776	SET SCREW, 1/4-20 x 1/4" Cone Point (2)
15	9-1802	SET SCREW, 5/16-18 x 5/8 Knurled Cup Point (2)
16	9-1298	NUT, 5/16-18 Hex Nyloc (6)
17	9-1299	NUT, 3/8-16 Hex Nyloc (5)
18	9-1928	BOLT, 5/16-18 x 1-1/4", Square Neck Carriage Grade 5 (6)
19	9-0122	WASHER, 3/8" Flat (4)
20	9-1518	NUT, 3/8-24 Hex Nyloc
21	9-1598	COTTER-PIN, 1/8 x 3/4"
22	9-1787	SCREW, 1/4-20 x 5/8", Hex Flange Lock, Grade 5 (16)
23	2-7181	BOLT, 3/8-16 x 1-1/4" Carriage, Grade 5 (4)
24	9-1804	WASHER, 9/16 Flat
25	1-4265	ASSEMBLY, Lock Collar, 1" (with 1/4" Set Screw, item 14)
26	1-3864	FITTING, Lube

# CUTTER HOUSING ASSEMBLY

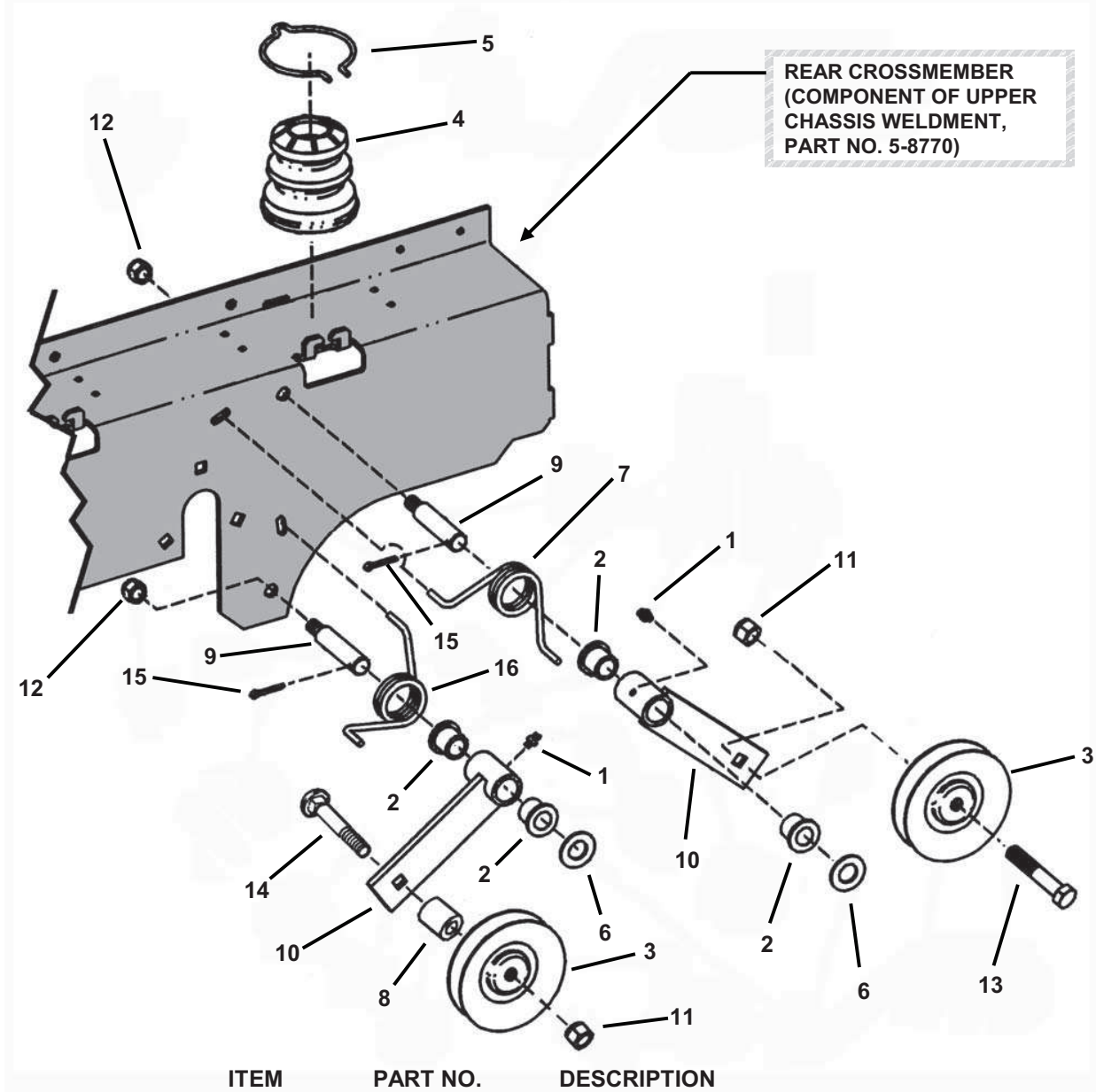


2	2-9270	WASHER, Spindle
3	2-9274	SNAP-RING, Spindle Shaft
4	5-9311	SHAFT, Spindle
5	2-9254	SPACER, Bearing
6	2-9271	SPACER, Blade (4)
7A	2-9251	BLADE, 21" (61" Deck) (High Lift)
7B	7-3395	BLADE, 18" (52" Deck) (Low Lift)
7C	7-3396	BLADE, 21" (61" Deck) (Low Lift)
7D	4-6625	BLADE, 25" (73" Deck)
8	1-6440	WASHER, Beveled
9	6-3234	BOLT, 5/8-11 x 7-1/2" Hex Head Cap, Grade 5
10	2-9275	FITTING, Lube
11	2-9252	HOUSING, Cutter
12	2-9384	VENT, Spindle
13	2-9302	BOLT, 3/8-16 x 1-1/4" Rib Necked (6)
14	2-9249	PULLEY, 5-3/4" O.D. (61" Deck)
15	6-3237	NUT, 5/8-18 Hex Flange Lock, Grade 5
16	9-1299	NUT, 3/8-16 Hex Nyloc (6)
17	6-3238*	SEAL, Nylos
18	1-3370*	WASHER

NOTE: Part Number 5-4017 (Spindle Housing sub-assembly) is comprised of items 11 and 12 (one each) as well as item 13 (six each).



## TRACTION DRIVE IDLER ASSEMBLY



ITEM	PART NO.	DESCRIPTION
1	1-3864	FITTING, Lube (straight, for 3/16" hole) (2)
--	1-3324	FITTING, Lube (45 degree, for 3/16" hole) (2)
2	1-4409	BUSHING, 9/16 I.D., 3/4" O.D. (4)
3	1-8573	PULLEY, Idler 3.48 O.D. A Section (2)
4	1-9109	COVER, Spring (Rubber) (2)
5	1-9348	CLIP, Seat Cushion (2)
6	9-1804	WASHER, 9/16 Flat (Type B) (4)
7	3-5713	SPRING, Torsion
8	3-5812	SPACER, 3/8 I.D. 5/8 O.D. x 5/8" Long
9	3-5816	PIN, 3/8-24 (2)
10	4-2622	WELDMENT, Idler Arm (2)
11	9-1299	NUT, 3/8-16 Hex Nyloc (2)
12	9-1518	NUT, 3/8-24 Hex Nyloc (2)
13	9-1553	SCREW, 3/8-16 x 1-3/4" Hex Head Cap, Grade 5
14	9-0990	BOLT, 3/8-16 x 2" Short Neck Carriage, Grade 2
15	9-1598	COTTER PIN, 1/8 x 3/4" (2)
16	3-6562	SPRING, Torsion

# DECALS

**WARNING**  
**TO AVOID SERIOUS INJURY OR DEATH**

- READ OPERATOR'S MANUAL AND OTHER INSTRUCTIONAL MATERIALS PROVIDED.
- KNOW LOCATION AND FUNCTION OF ALL CONTROLS.
- NEVER START BLADES UNLESS PROPERLY SEATED ON MACHINE.
- KEEP SAFETY DEVICES (GUARDS, SHIELDS AND SWITCHES) IN PLACE.
- REMOVE OBJECTS THAT COULD BE THROWN BY THE BLADES.
- DO NOT MOVE MOTION CONTROL LEVERS RAPIDLY. AVOID SUDDEN TURNS.
- DO NOT OPERATE BLADES IN REVERSE.
- LOOK DOWN AND BEHIND BEFORE AND DURING REVERSE MOVEMENT.
- DO NOT MOW IN ANY AREA WHERE STABILITY AND TRACTION IS IN DOUBT. DO NOT MOW ON SLOPES STEEPER THAN 15°.
- REDUCE SPEED ON SLOPES. GO FORWARD DOWN SLOPES. GO REVERSE UP SLOPES. NEVER TRAVEL ACROSS SLOPES.
- AVOID UPHILL STARTS. IF MACHINE STOPS GOING UPHILL, STOP BLADES AND BACK DOWN SLOWLY.
- DO NOT MOW WHEN CHILDREN OR OTHERS ARE AROUND. NEVER CARRY CHILDREN DURING OPERATION EVEN WITH BLADES OFF.
- BE SURE ALL MOVING PARTS ARE STATIONARY BEFORE PLACING HANDS AND FEET NEAR BLADES OR SERVICING MACHINE.

**TO START:**  
 MAKE SURE OPERATOR IS SEATED PROPERLY.  
 PLACE MOTION CONTROL LEVERS IN CENTER/NEUTRAL POSITION.  
 PULL UP ON BRAKE LEVER TO SET BRAKE.  
 PUSH BLADE SWITCH DOWN TO MAKE SURE BLADE IS DISENGAGED.  
 SET CHOKE AND THROTTLE.  
 TURN KEY TO START ENGINE.

**TO OPERATE:**  
 ADJUST CHOKE AND THROTTLE.  
 PULL BLADE SWITCH UP TO ENGAGE BLADE.  
 PUSH PARKING BRAKE LEVER DOWN TO RELEASE BRAKE.  
 MOVE MOTION CONTROL LEVERS IN THE DIRECTION OF TRAVEL REQUIRED.  
 INCREASE / DECREASE SPEED WITH AMOUNT OF MOTION CONTROL LEVERS TRAVEL FROM CENTER / NEUTRAL POSITION.

**TO STOP:**  
 MOVE MOTION CONTROL LEVERS TO CENTER / NEUTRAL POSITION.  
 PUSH BLADE SWITCH DOWN TO DISENGAGE BLADE.  
 PULL UP ON BRAKE LEVER TO SET BRAKE.  
 TURN KEY TO OFF POSITION AND REMOVE.  
 MAKE SURE ALL MOVEMENT HAS STOPPED BEFORE DISMOUNTING. 73601

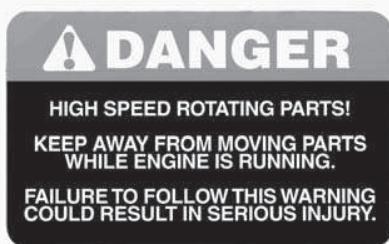
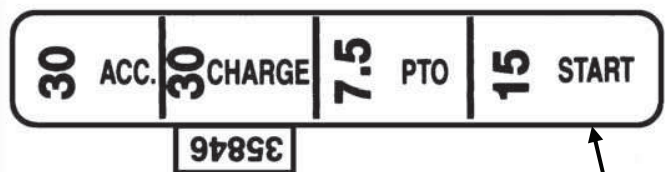
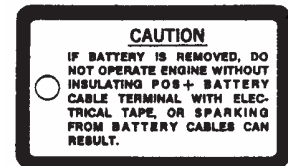
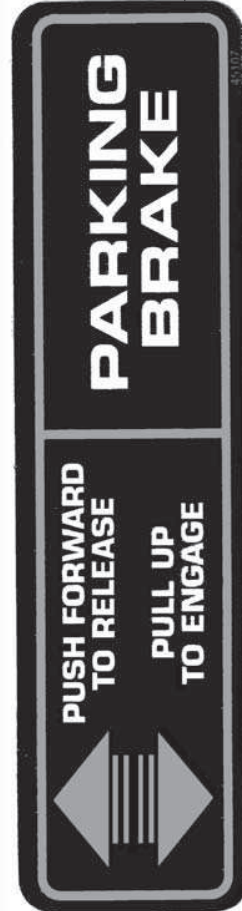
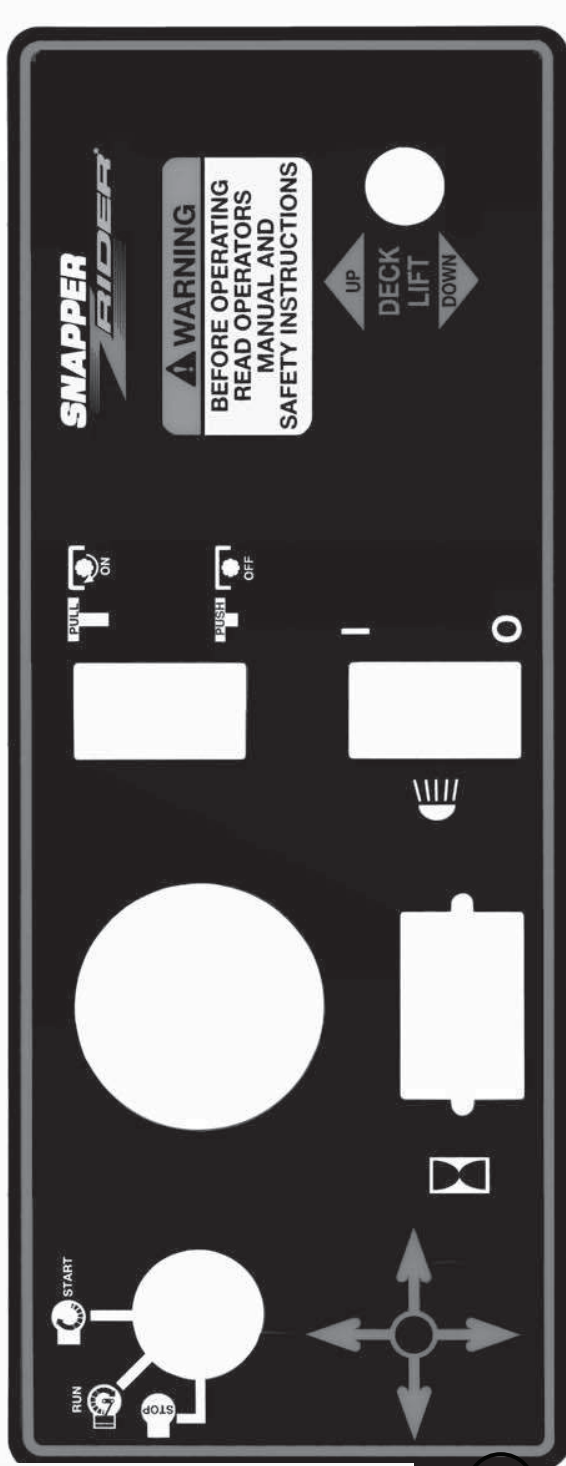


This Product may be covered by one or more of the following patents:

4,158,279	4,154,112
4,189,903	4,248,034
4,430,848	4,498,552
4,920,733	4,936,886
4,989,400	5,042,241
5,146,735	5,195,308
5,297,379	5,303,534
5,353,581	5,488,818
5,526,535	D358,400
Other Patents Pending.	29470

ITEM	PART NO.	DESCRIPTION
1	3-5848	LOGO, Front 16.33" Long
2	3-5847	LOGO, Side 24.5" Long (same appearance as above)
3	7-3601	DECAL, Throttle/Choke
4	4-4677	DECAL, Name ZF2200K
5	4-4640	DECAL, SNAPPER
6	2-9295	DECAL, Height-of-Cut
7	1-3010	DECAL, Warning (CPSC Cut-Finger)
8	7-3647	DECAL, Danger
9	2-9470	DECAL, Patent Numbers

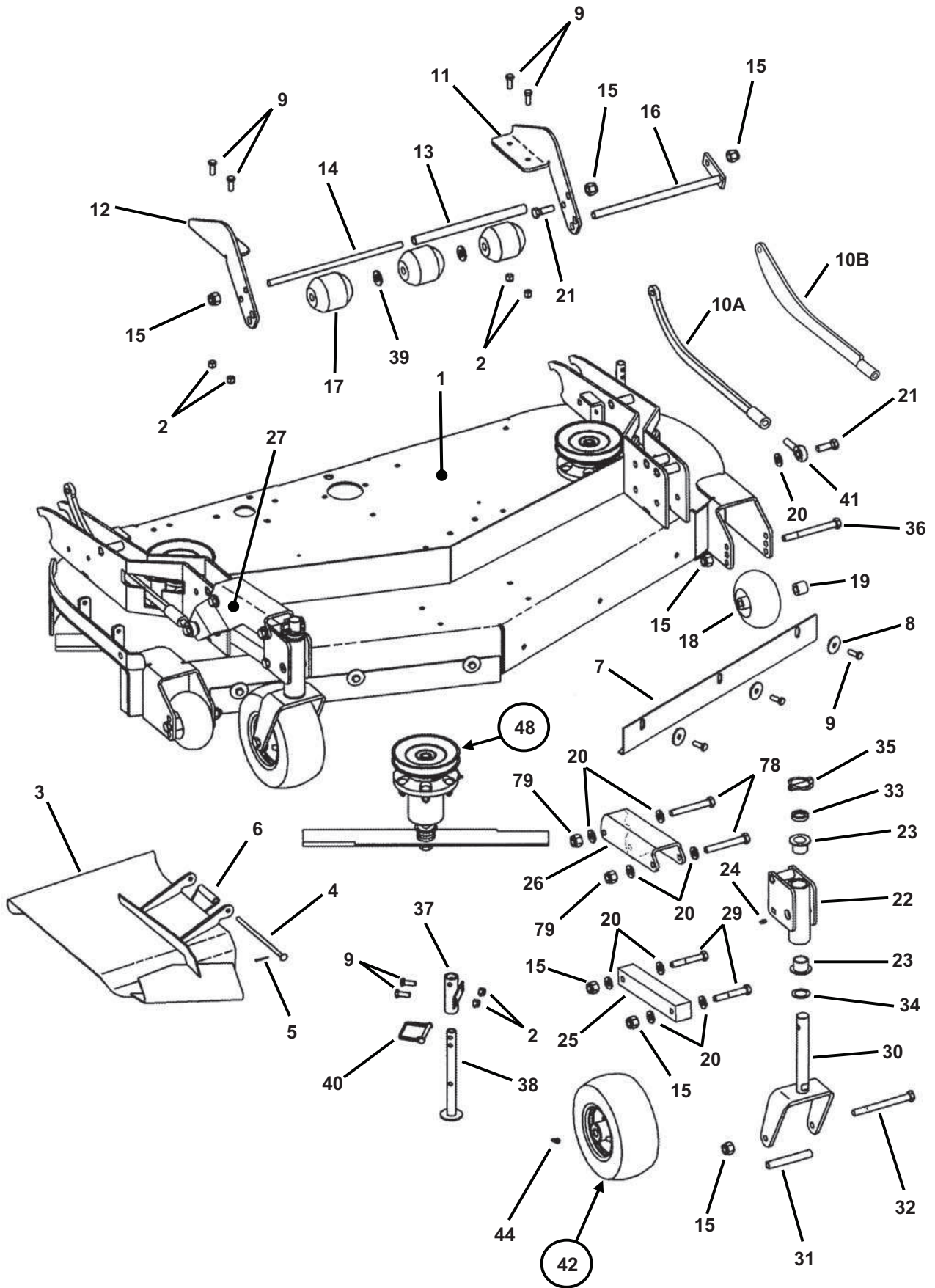
## DECALS



ITEM	PART NO.	DESCRIPTION
10	7-3798	DECAL, Control Panel
11	7-3596	DECAL, Danger
12	3-5846	DECAL, Fuse
13	4-5107	DECAL, Parking Brake
14	4-4793	DECAL, 52" Deck
15	4-4794	DECAL, 61" Deck
16	4-6371	DECAL, 73" Deck
17	1-6134	DECAL, Caution Tag

# 52" MOWER DECK COMPONENTS

(page 1 of 4)



## 52" MOWER DECK COMPONENTS

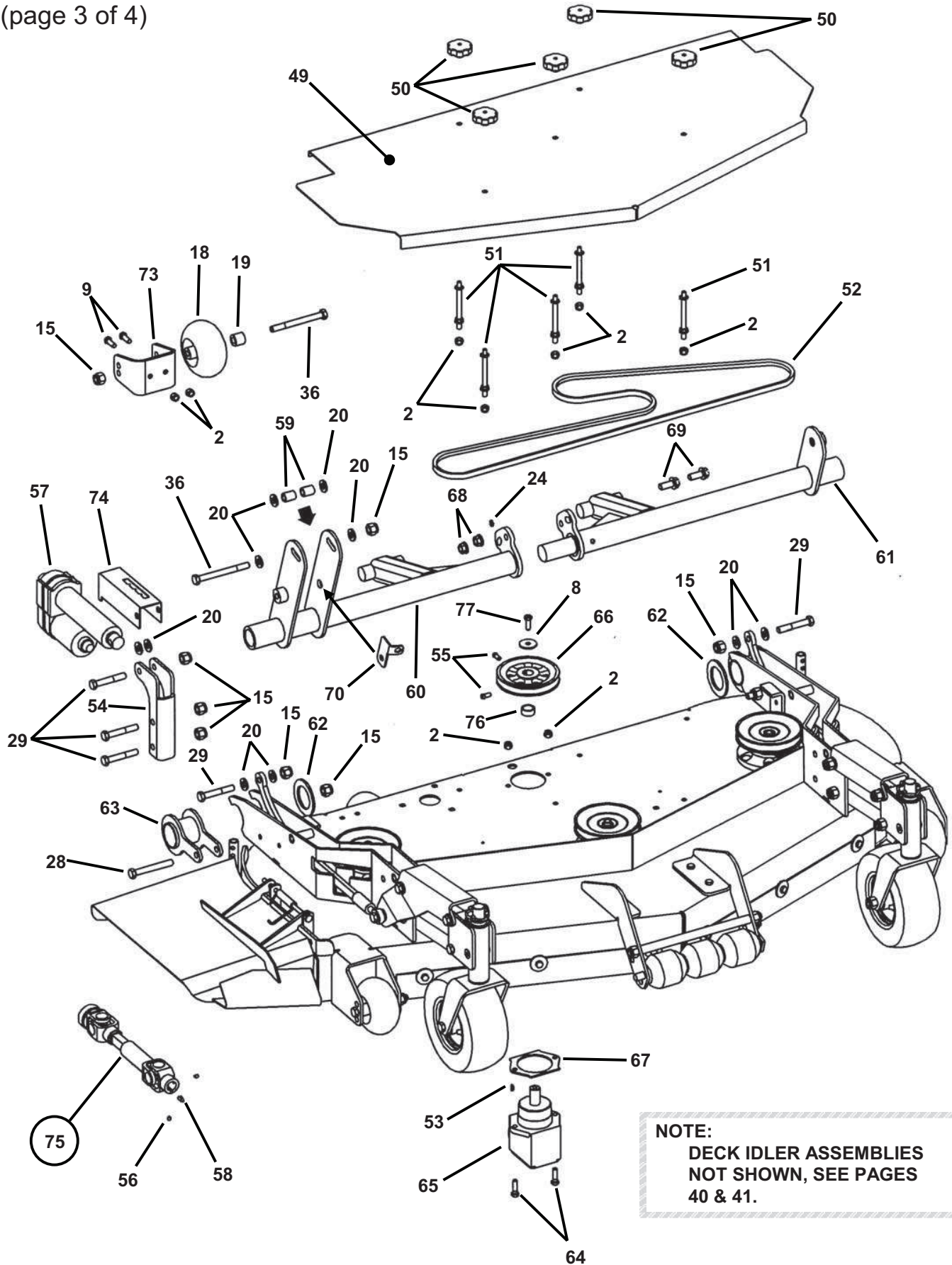
(page 2 of 4)

ITEM	PART NO.	DESCRIPTION
1	4-2898	WELDMENT, 52" Deck- Adjustable Height
2	9-1299	NUT, 3/8-16 Hex Nyloc (23)
3	5-8285	DEFLECTOR, Chute 52" Euro (Weldment)
4	2-9277	PIN, Chute Hinge
5	9-1313	PIN, 3/32 x 1" Cotter
6	2-7950	SPRING, Chute
7	4-2914	BAFFLE, Front (2)
8	9-1331	WASHER, 13/32 x 1-1/2" Flat (8)
9	9-1304	SCREW, 3/8-16 x 1" Hex Head Cap, Grade 5 (21)
10A	4-6495	LINK, Height of Cut (2)
10B	5-3437	LINK, Height of Cut, Heavy Duty (may be substituted for 4-6495)
11	3-6459	MOUNT, Roller Left Hand
12	3-6458	MOUNT, Roller Right Hand
13	3-6460	TUBE, Roller
14	3-6461	PIN, Roller
15	9-1325	NUT, 1/2-13 Hex Nyloc (15)
16	2-7327	WELDMENT, Shaft
17	7-9226	ROLLER, Low Density Polyethylene (3)
18	2-9264	WHEEL, Gage (4)
19	3-6456	SPACER, Gage Wheel (4)
20	9-1587	WASHER, 1/2" Flat (26)
21	9-1884	SCREW, 1/2-13 x 1-1/2" Hex Head Cap, Grade 2 (3)
22	4-2652	TUBE, Caster (Weldment) (2)
23	2-3556	BUSHING, Caster (4)
24	7-6998	FITTING, Lube 1/4-28 Straight (4)
25	3-6444	ARM, Lower Caster (2)
26	4-2655	ARM, Caster Support Left Hand
27	4-2653	ARM, Caster Support Right Hand
28	2-9355	BOLT, 1/2-13 x 3-3/4" Hex Head Cap, Grade 5 (2)
29	9-1821	BOLT, 1/2-13 x 3" Hex Head (9)
30	4-2780	WELDMENT, Caster (2)
31	2-2151	SLEEVE, Axle (2)
32	9-1326	SCREW, 1/2-13 x 5-1/2" Hex Head Cap, Grade 5 (2)
33	2-1960	SPACER, Powdered Metal (2)
34	2-3747	BUSHING, Machine (2)
35	1-7711	PIN, 7/16" HD Lynch (2)
36	9-1822	BOLT, 1/2-13 x 5" Hex Head Cap, Grade 5 (5)
37	4-2657	TUBE, Jack Stand (Weldment) (2)
38	4-2658	WELDMENT, Jack Stand (2)
39	2-7344	WASHER, 5/8" Flat (2)
40	9-1824	PIN, 5/16" Lynch (2)
41	3-6465	BALLJOINT, 1/2-20 (2)
42	5-9065	ASSEMBLY, Wheel/Tire (2) (Includes items 43 Thru 47)
43	4-6540	TIRE, Carefree 4.10-4
44	4-6430	FITTING, Grease 1/4"
45	4-6541	RIM, Steel (White) 1-3/8" Bore w/o Air Valve
46	2-2395	BEARING, Roller
47	2-2394	BEARING, Flanged (2)
48	5-4477	GROUP, Spindle (3) (See Page 24 for parts breakdown)

**NOTE: 5-7735 (Height of Cut Linkage Assembly) is comprised of items 10A & 41.**

# 52" MOWER DECK COMPONENTS

(page 3 of 4)



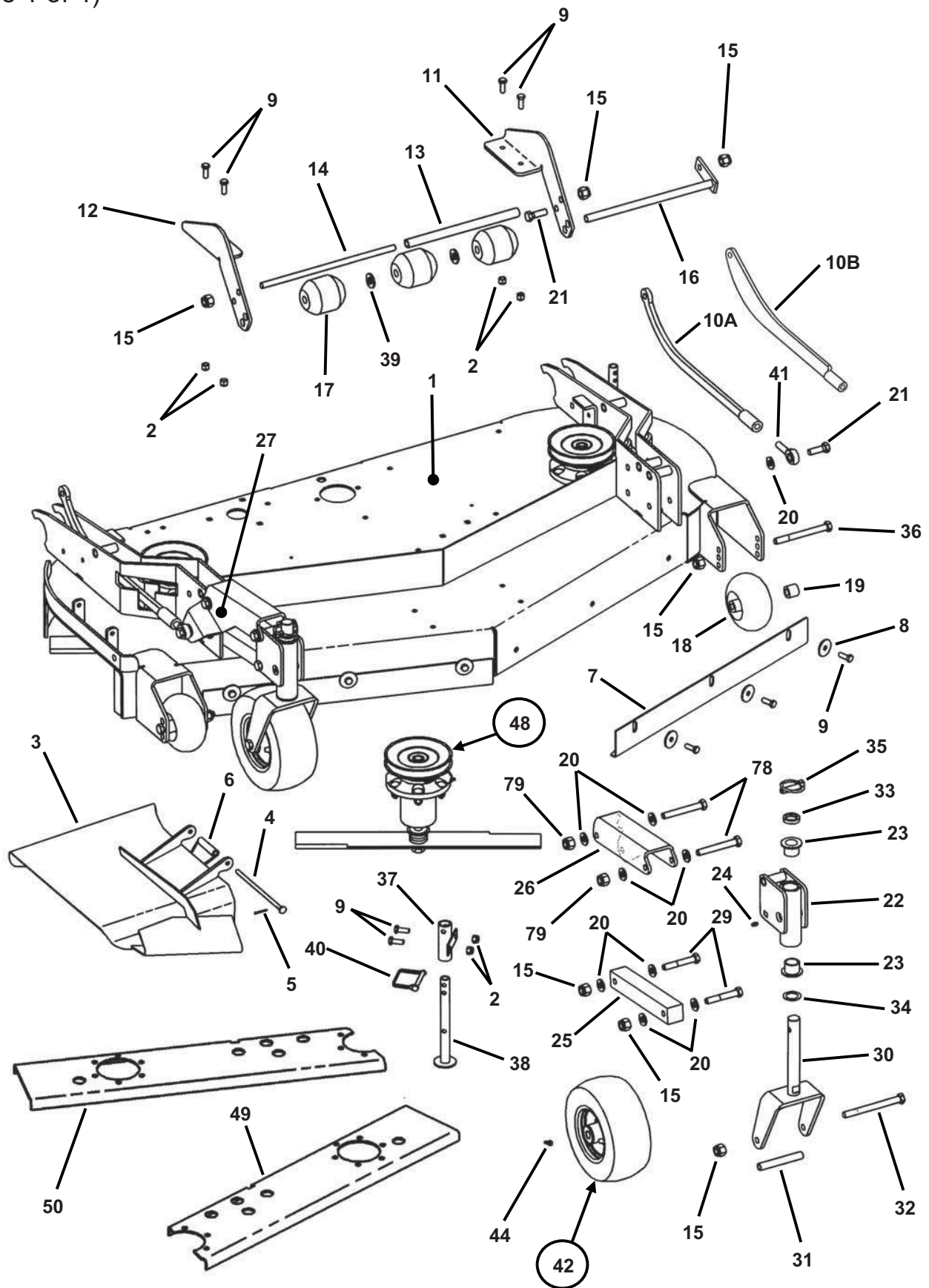
## 52" MOWER DECK COMPONENTS

(page 4 of 4)

ITEM	PART NO.	DESCRIPTION
49	4-6728	COVER, 52" Deck
50	2-3735	KNOB, 5/16-18 Thread (5)
51	2-9303	STANDOFF, 3-1/2" (5)
52	4-2776	V-BELT, 52" Deck (122") HB
53	1-0008	KEY, #6 Woodruff
54	3-6447	MOUNT, Motor (Front)
55	9-1802	SCREW, 5/16-18 x 5/8" Square Head Set w/locking patch (2)
56	9-0132	SCREW, 3/8-16 x 3/8" Hex Recess Set (2)
57	3-6448	SCREWJACK, Warner Electric 1000 lbs.
58	1-0211	KEY, #9 Woodruff
59	3-6453	SPACER, Motor, Rear (2)
60	4-2900	MAIN LINK (Weldment)
61	4-2901	MAIN LINK (Weldment) Left Hand
62	3-6452	SPACER, Tube (2)
63	4-2660	HOLDER, Pivot (Weldment) (2)
64	9-1497	SCREW, 3/8-16 x 1-1/2" Hex Head Cap, Grade 5 (2)
65	5-8342	GEARBOX, Right Angle (Peerless P/N 1000-52)
66	4-2867	PULLEY, Cast 5.75" Outside Diameter
67	3-6455	SHIM, Gearbox
68	9-1544	NUT, 1/2-13 Hex Flange Lock, Grade 5 (2)
69	9-1323	BOLT, 1/2-13 x 1-1/4" Hex Flange Lock, Grade 5 (2)
70	3-6450	BRACKET, Strain Relief
71	3-5779	RELIEF, Strain (see page 48)
72	4-2834	HARNESS, Deck Lift (see page 50)
73	3-6457	BRACKET, Gage Wheel (2)
74	3-6454	INDICATOR, Height-of-Cut (2)
75	5-4104	ASSEMBLY, Telescoping Drive Shaft (includes two set screws, p/n 9-0201 and one 1/4-28 grease fitting, p/n 1-2700)
76	3-5668	SPACER
77	9-1899	SCREW, 3/8-24 x 1", Grade 5
78	9-0993	SCREW, 1/2-20 x 4-1/2" Hex Head Cap, Grade 5 (4)
79	9-0393	NUT, 1/2-20 Hex Nyloc (4)

# 61" MOWER DECK COMPONENTS

(page 1 of 4)





## 61" MOWER DECK COMPONENTS

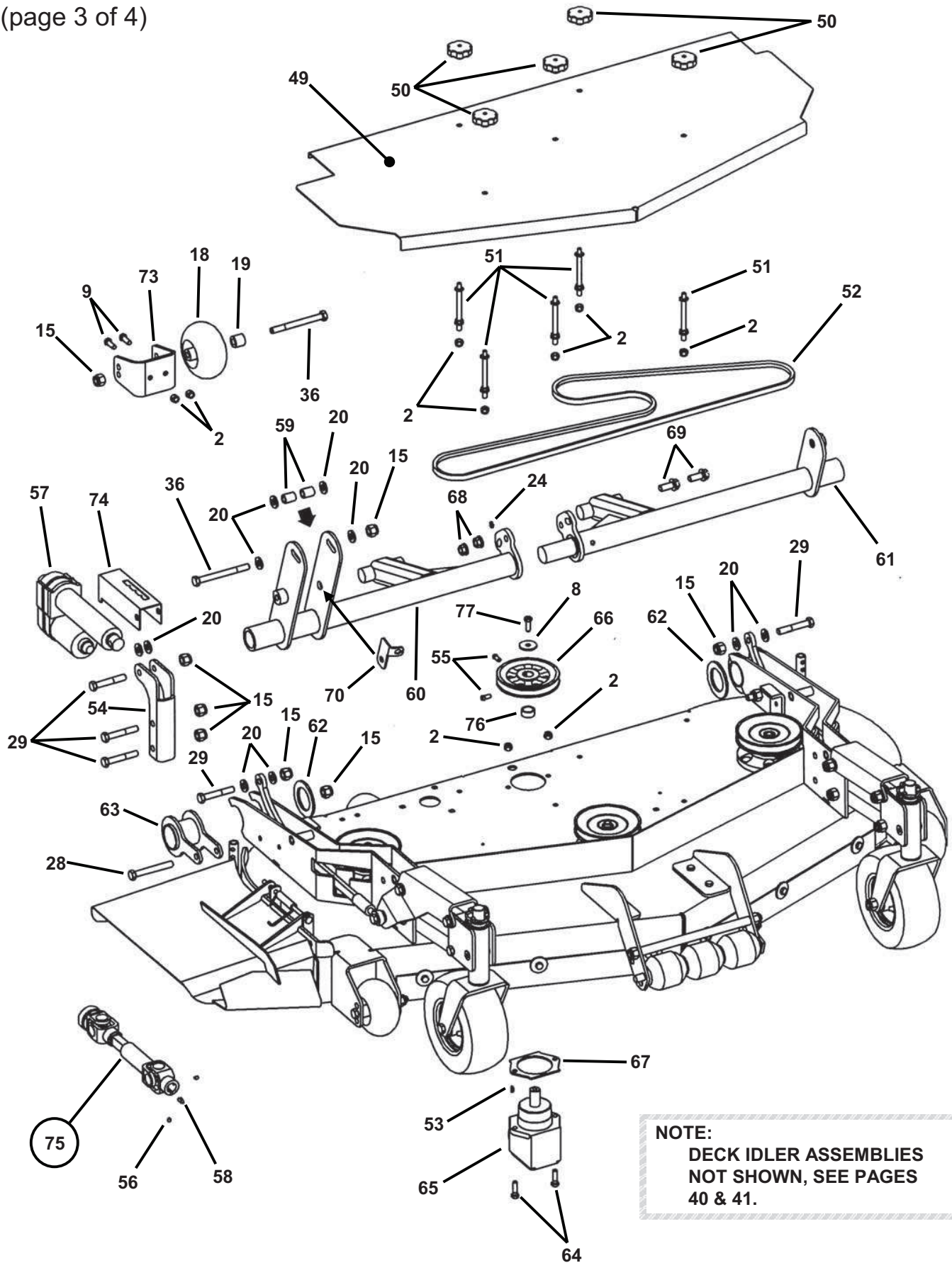
(page 2 of 4)

ITEM	PART NO.	DESCRIPTION
1	4-2651	WELDMENT, 61" Deck- Adjustable Height
2	9-1299	NUT, 3/8-16 Hex Nyloc (14)
3	5-8291	DEFLECTOR, Chute 61" Euro (Weldment)
4	2-9277	PIN, Chute Hinge
5	9-1313	PIN, 3/32 x 1" Cotter
6	2-7950	SPRING, Chute
7	3-6445	BAFFLE, Front (2)
8	9-1331	WASHER, 13/32 x 1-1/2" Flat (7)
9	9-1304	SCREW, 3/8-16 x 1" Hex Head Cap, Grade 5 (18)
10A	4-6495	LINK, Height of Cut (2)
10B	5-3437	LINK, Height of Cut, Heavy Duty (may be substituted for 4-6495)
11	3-6459	MOUNT, Roller Left Hand
12	3-6458	MOUNT, Roller Right Hand
13	3-6460	TUBE, Roller
14	3-6461	PIN, Roller
15	9-1325	NUT, 1/2-13 Hex Nyloc (21)
16	2-7327	WELDMENT, Shaft
17	7-9226	ROLLER, Low Density Polyethylene (3)
18	2-9264	WHEEL, Gage (4)
19	3-6456	SPACER, Gage Wheel (4)
20	9-1587	WASHER, 1/2" Flat (26)
21	9-1884	SCREW, 1/2-13 x 1-1/2" Hex Head Cap, Grade 2 (3)
22	4-2652	TUBE, Caster (Weldment) (2)
23	2-3556	BUSHING, Caster (4)
24	7-6998	FITTING, Lube 1/4-28 Straight (4)
25	3-6444	ARM, Lower Caster (2)
26	4-2655	ARM, Caster Support Left Hand
27	4-2653	ARM, Caster Support Right Hand
28	2-9355	BOLT, 1/2-13 x 3-3/4" Hex Head Cap, Grade 5 (2)
29	9-1821	BOLT, 1/2-13 x 3" Hex Head (9)
30	4-2780	WELDMENT, Caster (2)
31	2-2151	SLEEVE, Axle (2)
32	9-1326	SCREW, 1/2-13 x 5-1/2" Hex Head Cap, Grade 5 (2)
33	2-1960	SPACER, Powdered Metal (2)
34	2-3747	BUSHING, Machine (2)
35	1-7711	PIN, 7/16" HD Lynch (2)
36	9-1822	BOLT, 1/2-13 x 5" Hex Head Cap, Grade 5 (5)
37	4-2657	TUBE, Jack Stand (Weldment) (2)
38	4-2658	WELDMENT, Jack Stand (2)
39	2-7344	WASHER, 5/8" Flat (2)
40	9-1824	PIN, 5/16" Lynch (2)
41	3-6465	BALLJOINT, 1/2-20 (2)
42	5-9065	ASSEMBLY, Wheel/Tire (2) (Includes items 43 Thru 47)
43	4-6540	TIRE, Carefree 4.10-4
44	4-6430	FITTING, Grease 1/4"
45	4-6541	RIM, Steel (White) 1-3/8" Bore w/o Air Valve
46	2-2395	BEARING, Roller
47	2-2394	BEARING, Flanged (2)
48	5-4353	GROUP, Spindle (3) (See Page 24 for parts breakdown)
49	7-4818	STIFFENER, 61" Deck, Left Hand
50	7-4819	STIFFENER, 61" Deck, Right Hand

**NOTE: 5-7735 (Height of Cut Linkage Assembly) is comprised of items 10A & 41.**

# 61" MOWER DECK COMPONENTS

(page 3 of 4)



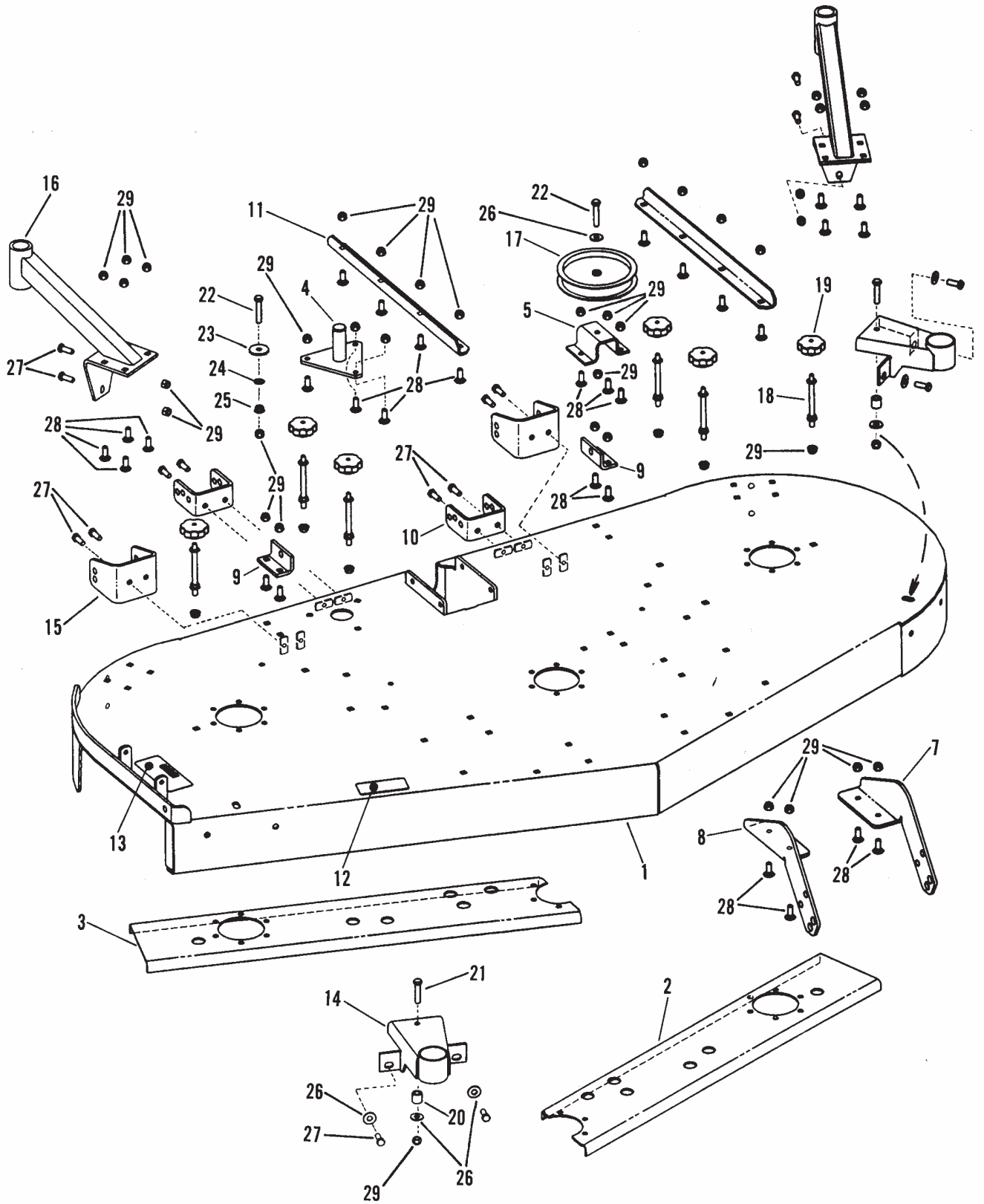
## 61" MOWER DECK COMPONENTS

(page 4 of 4)

ITEM	PART NO.	DESCRIPTION
49	4-6729	COVER, 61" Deck
50	2-3735	KNOB, 5/16-18 Thread (4)
51	2-9303	STANDOFF, 3-1/2" (5)
52	3-5542	V-BELT, 61" (134.5") HB
53	1-0008	KEY, #6 Woodruff
54	3-6447	MOUNT, Motor (Front)
55	9-1802	SCREW, 5/16-18 x 5/8" Square Head Set w/locking patch (2)
56	9-0132	SCREW, 3/8-16 x 3/8" Hex Recess Set (2)
57	3-6448	SCREWJACK, Warner Electric 1000 lbs.
58	1-0211	KEY, #9 Woodruff
59	3-6453	SPACER, Motor, Rear (2)
60	4-2662	MAIN LINK (Weldment)
61	4-2661	MAIN LINK (Weldment) Left Hand
62	3-6452	SPACER, Tube (2)
63	4-2660	HOLDER, Pivot (Weldment) (2)
64	9-1328	SCREW, 3/8-16 x 1-1/4" Hex Head Cap, Grade 5 (2)
65	5-8342	GEARBOX, Right Angle (Peerless P/N 1000-52)
66	7-4466	PULLEY, Cast 5.25" Outside Diameter
67	3-6455	SHIM, Gearbox
68	9-1544	NUT, 1/2-13 Hex Flange Lock, Grade 5 (2)
69	9-1323	BOLT, 1/2-13 x 1-1/4" Hex Flange Lock, Grade 5 (2)
70	3-6450	BRACKET, Strain Relief
71	3-5779	RELIEF, Strain (see page 48)
72	4-2834	HARNESS, Deck Lift (see page 50)
73	3-6457	BRACKET, Gage Wheel (2)
74	3-6454	INDICATOR, Height-of-Cut (2)
75	5-4104	ASSEMBLY, Telescoping Drive Shaft (includes two set screws, p/n 9-0201 and one 1/4-28 grease fitting, p/n 1-2700)
76	3-5668	SPACER
77	9-1899	SCREW, 3/8-24 x 1", Grade 5
78	9-0993	SCREW, 1/2-20 x 4-1/2" Hex Head Cap, Grade 5 (4)
79	9-0393	NUT, 1/2-20 Hex Nyloc (4)

# 73" MOWER DECK COMPONENTS

(page 1 of 4)



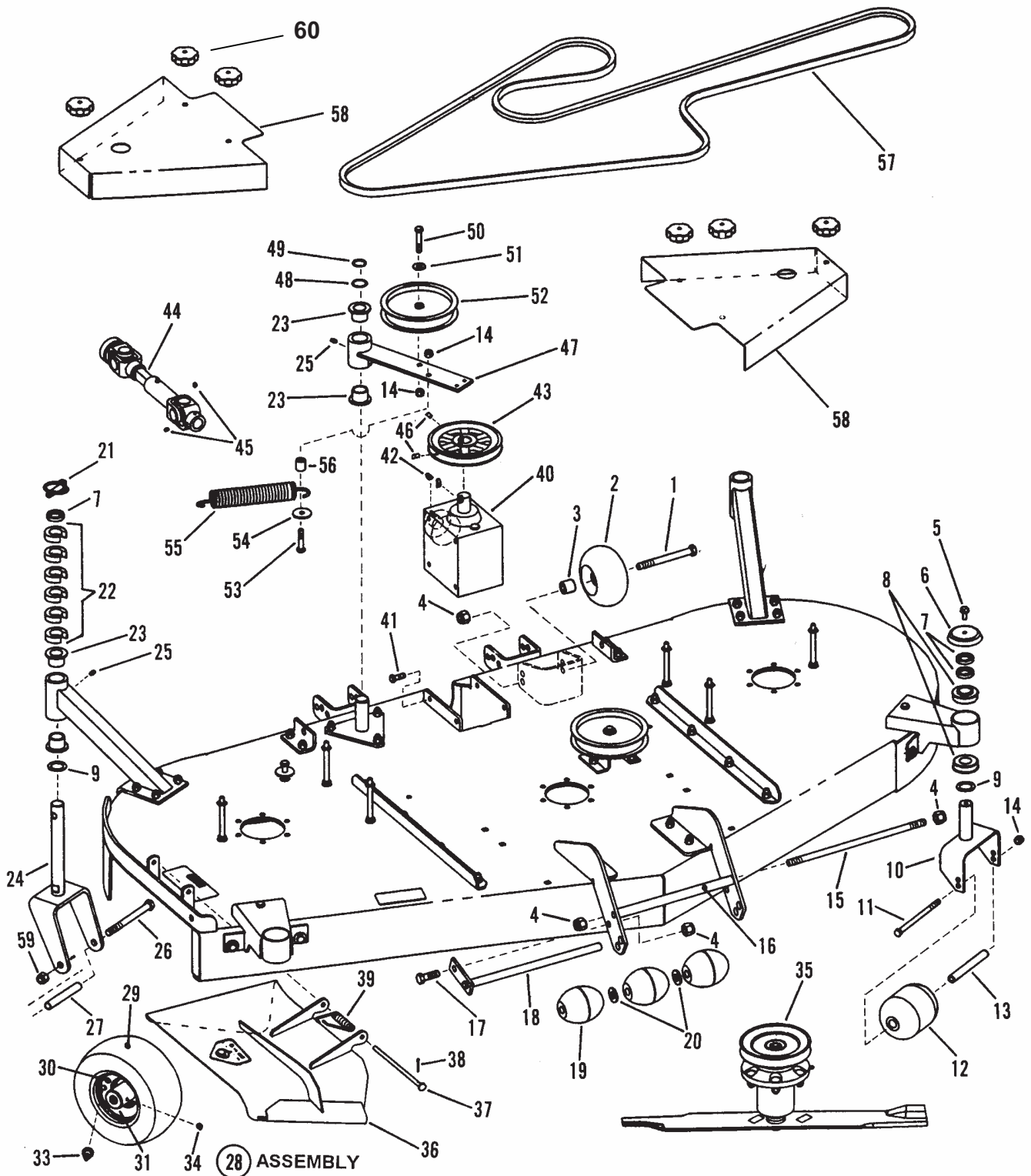
## 73" MOWER DECK COMPONENTS

(page 2 of 4)

ITEM	PART NO.	DESCRIPTION
1	4-1839	WELDMENT, 73" Deck
2	4-6250	CHANNEL, L.H. Deck Stiffener
3	4-6251	CHANNEL, R.H. Deck Stiffener
4	4-1295	WELDMENT, Idler Pivot
5	3-6449	STAND, Fixed Idler
6	3-5789	PULLEY, Idler 5-1/2" O.D.
7	3-6459	ROLLER MOUNT, Left Hand
8	3-6458	ROLLER MOUNT, Right Hand
9	4-3824	HANGER BRACKET, Rear Deck Lift (2)
10	4-6623	BRACKET, Rear Deck Hanger (2)
11	4-6509	STIFFENER, Deck (2)
12	4-6371	DECAL, 73" Deck
13	7-3647	DECAL, Danger
14	4-1821	WELDMENT, Gage Wheel (2)
15	3-6457	BRACKET, Gage Wheel (2)
16	4-6515	WELDMENT, Caster Support (2)
17	3-5789	PULLEY, Idler 5-1/2" O.D.
18	2-9303	STANDOFF, 3-1/2" (5/16-18 Top; 3/8-16 Bottom) (6)
19	2-3735	KNOB, 5/16-18 (6)
20	4-4752	SPACER (2)
21	9-1553	SCREW, 3/8-16 x 1-3/4" Hex Head Cap, Grade 5 (2)
22	9-1305	SCREW, 3/8-16 x 2" Hex Head Cap, Grade 5 (2)
23	9-1331	WASHER, .406 I. D. x 1-1/2" O.D. Flat
24	1-3847	RETAINER, 3/8" Bolt
25	9-1619	NUT, 3/8-16 Hex Flange Lock
26	9-1300	WASHER, .44 I.D. x 1" O.D. (7)
27	9-1304	SCREW, 3/8-16 x 1" Hex Head Cap, Grade 5 (16)
28	9-1640	BOLT, 3/8-16 x 1" square Neck Carriage, Grade 5 (30)
29	9-1299	NUT, 3/8-16 Hex Nyloc (44)

# 73" MOWER DECK COMPONENTS

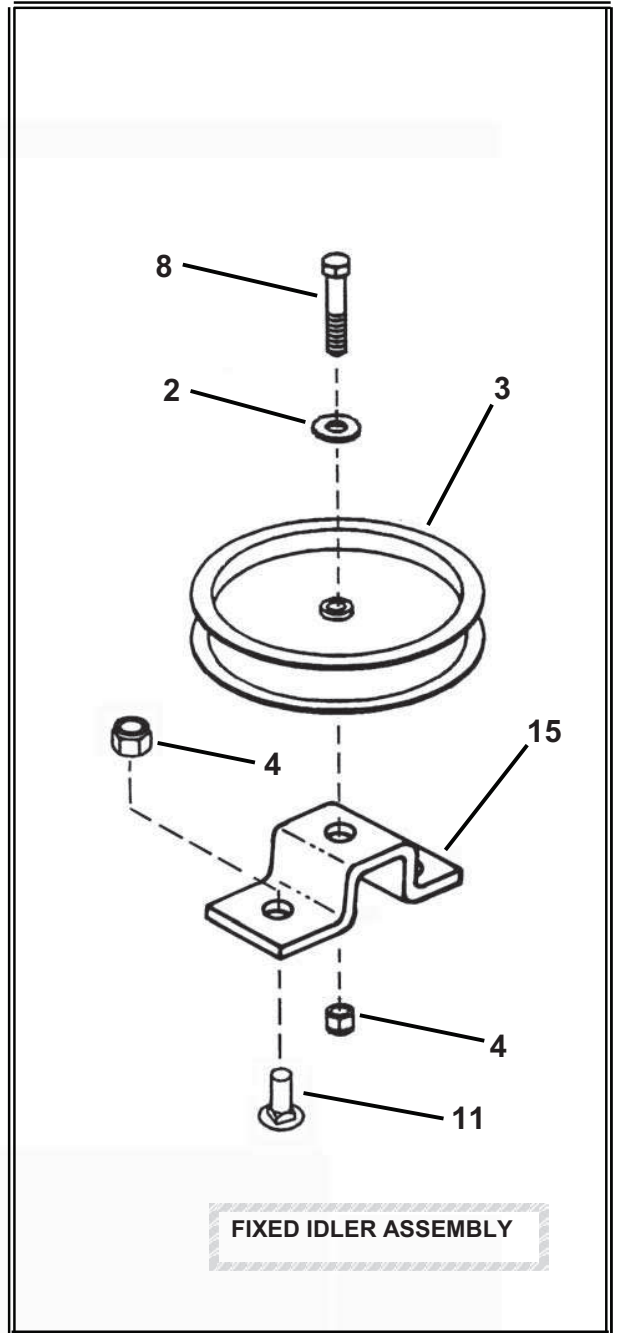
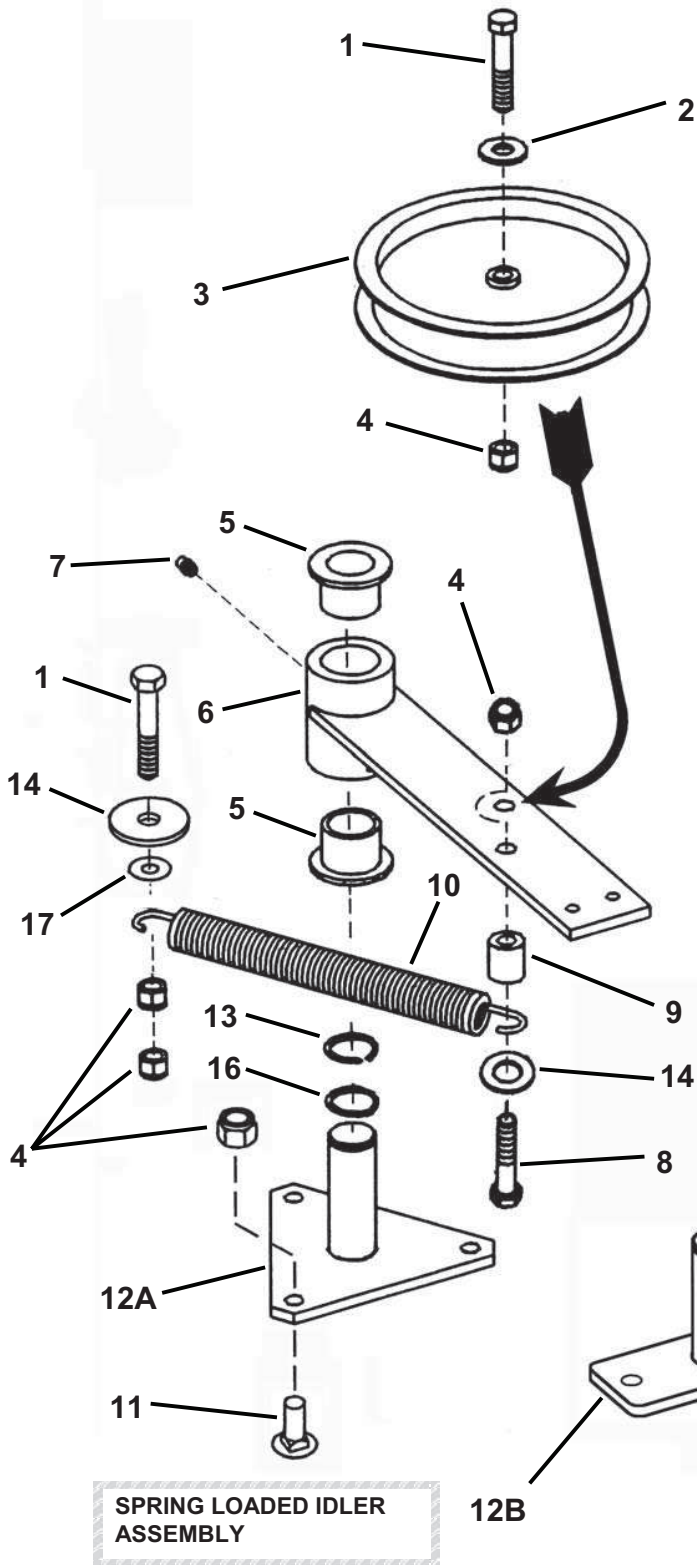
(page 3 of 4)



## 73" MOWER DECK COMPONENTS (page 4 of 4)

ITEM	PART NO.	DESCRIPTION
1	9-1822	SCREW, 1/2-13 x 5" Hex Head Cap (2)
2	2-9264	GAGE WHEEL (2)
3	3-6456	SPACER, Gage Wheel (2)
4	9-1325	NUT, 1/2-13 Hex Nyloc (5)
5	9-1541	SCREW, 5/16-18 x 3/4" Hex Washer Self-Tap (2)
6	4-4839	CAP, Caster Shaft (2)
7	2-1960	SPACER (6)
8	4-4892	BEARING, Flanged Radial 1 x 2 x 23/32" Double Seal (4)
9	2-3747	BUSHING, Machine 1" I.D. (4)
10	4-4646	WELDMENT, Gauge Wheel Caster (2)
11	9-1617	SCREW, 3/8-16 x 6" Hex Head Cap (2)
12	7-9868	ROLLER, 3-3/4 x 4-13/16" Nylon (2)
13	7-9882	TUBE, Axle (2)
14	9-1299	NUT, 3/8-16 Hex Nyloc (6)
15	3-6461	ROD, 1/2-13 Threaded Roller
16	3-6460	TUBE, Roller
17	9-1884	SCREW, 1/2-13 x 1-1/2" Hex Head Cap
18	2-7327	WELDMENT, Pivot Pin
19	7-9226	ROLLER, Low Density Polyethylene (3)
20	2-7344	WASHER, 5/8" SAE Flat (2)
21	1-7711	PIN, 7/16" Lynch (2)
22	1-9152	SPACER, Caster (12)
23	2-3556	BUSHING, Caster (6)
24	4-6523	WELDMENT, Caster Yoke (2)
25	7-6998	FITTING, 1/4-28, Straight, Grease (3)
26	9-1326	SCREW, 1/2-13 x 5-1/2" Hex Head Cap, Grade 5 (2)
27	2-2151	SLEEVE, Axle (2)
28	2-9869	ASSEMBLY, Wheel/Tire (2) (includes items 29-34)
29	2-9870	TIRE, 9 x 3.50-4, 4 Ply Smooth
30	2-9871	RIM, One Piece Steel, White
31	2-2394	BEARING, Flanged (2)
32	2-2395	BEARING, Roller (not shown)
33	1-2234	VALVE, Air
34	4-6430	FITTING, 1/4-28, 45 Degree, Grease
35	5-7779	GROUP, Spindle (3) (see page 24 for parts breakdown)
36	5-8898	WELDMENT, Chute Deflector ANSI Compliant
37	2-9277	HINGE PIN, Chute
38	9-1313	PIN, 3/32 x 1" Cotter
39	2-7950	SPRING, Chute
40	4-6624	GEARBOX, Right Angle 1.5:1 (Peerless P/N 1100-018)
41	9-1304	SCREW, 3/8-16 x 1" Hex Head Cap, Grade 5 (4)
42	1-3857	KEY, 1/4 x 7/8" Woodruff (2)
43	7-3290	PULLEY, Cast 6.50" O.D.
44	5-7863	DRIVESHAFT, Telescoping
45	9-0132	SCREW, 3/8-16 x 3/8" Set (2)
46	9-1802	SCREW, 5/16-18 x 5/8" Socket Head Set (2)
47	4-2619	WELDMENT, Idler Arm
48	3-2031	WASHER, 1-1/32 I.D. x 1-1/4" O.D. Flat
49	1-2709	E-RING, 1"
50	9-1305	SCREW, 3/8-16 x 2" Hex Head Cap, Grade 5
51	9-1300	WASHER, 3/8" Flat
52	3-5789	PULLEY, 5-1/2" O.D. Idler
53	9-1553	SCREW, 3/8-16 x 1-3/4" Hex Head Cap, Grade 5
54	9-1331	WASHER, 13/32 I.D. x 1-1/2" O.D. Flat
55	3-5667	SPRING, Extension
56	3-5858	SPACER, 1/2 I.D. x 3/4" O.D. x .83
57	7-3328	BELT, 153.12" HB Section
58	4-6644	GUARD, Pulley (2)
59	9-1922	NUT, 1/2-13 Hex Light Nyloc (2)
60	2-3735	KNOB, 5/16-18 (6)

# 52" & 61" DECK IDLER ASSEMBLIES

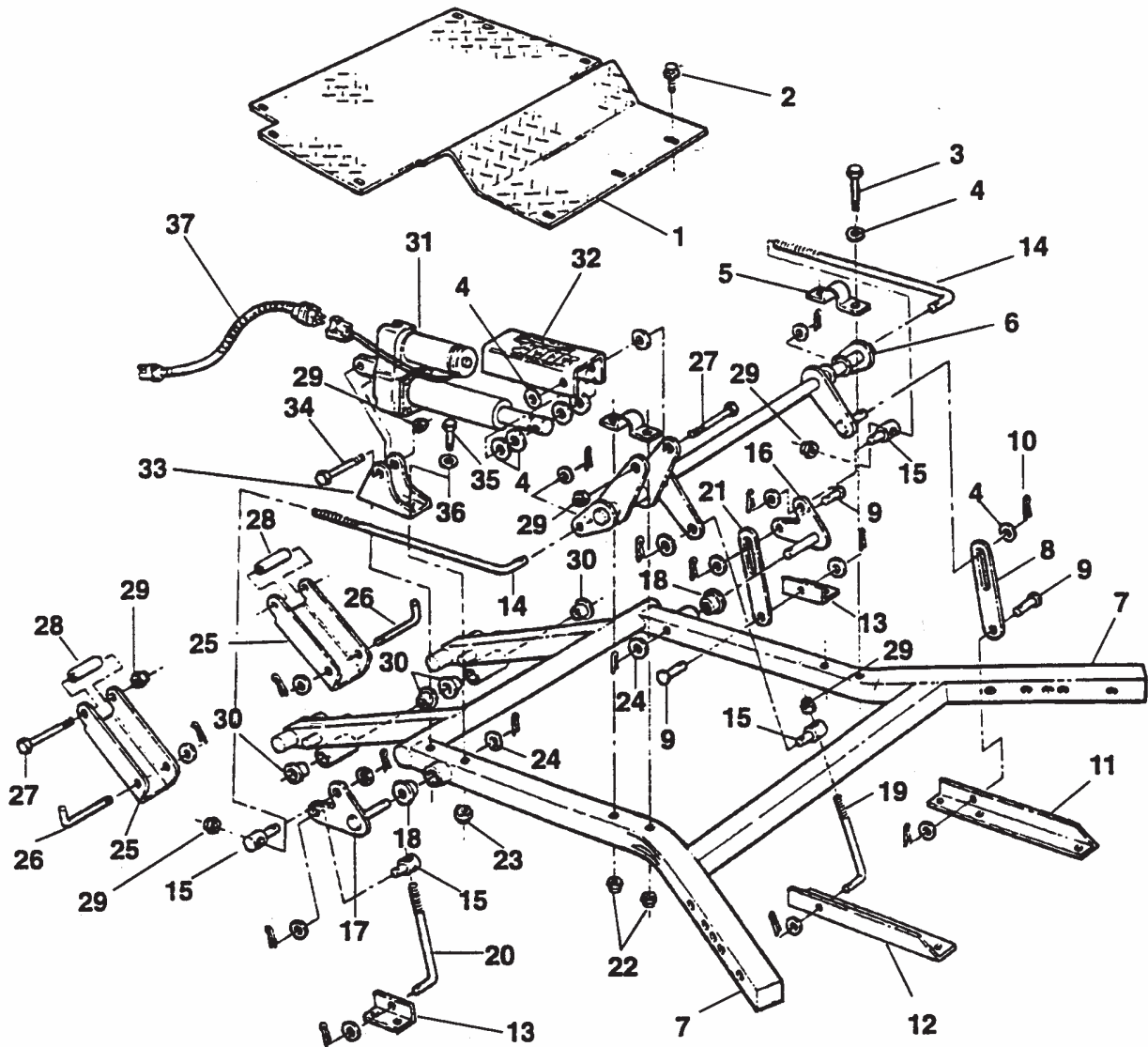




## 52" & 61" DECK IDLER ASSEMBLIES

ITEM	PART NO.	DESCRIPTION
1	9-1305	SCREW, 3/8-16 x 2" Hex Head Cap, Grade 5 (2)
2	9-1300	WASHER, 3/8" Flat (2)
3	3-5789	PULLEY, Idler 5-1/2" O.D. (2)
4	9-1299	NUT, 3/8-16 Hex Nyloc (11)
5	2-3556	BUSHING (2)
6	4-2619	ARM, Idler (Weldment)
7	7-6998	FITTING, Lube 1/4-28 Straight
8	9-1553	SCREW, 3/8-16 x 1-3/4" Hex Head Cap, Grade 5 (2)
9	3-5858	SPACER, .50 I.D. x .75 O.D. x .83
10	3-5667	SPRING, Extension
11	9-1640	BOLT, 3/8-16 x 1" Square Neck Carriage, Grade 5 (6)
12A	4-1295	WELDMENT, Tri-Mount Idler Pivot (61" Deck only)
12B	4-2976	WELDMENT, Idler Pivot (52" Deck only)
13	1-2709	RING, 1" External-Retaining
14	9-1331	WASHER, .406 x 1.5 x .120 Yellow Zinc (2)
15	3-6449	STAND, Fixed Idler
16	3-2031	WASHER, 1.031 x 1.25
17	1-3847	RETAINER, 3/8" Bolt

# 73" DECK FRAME ASSEMBLY

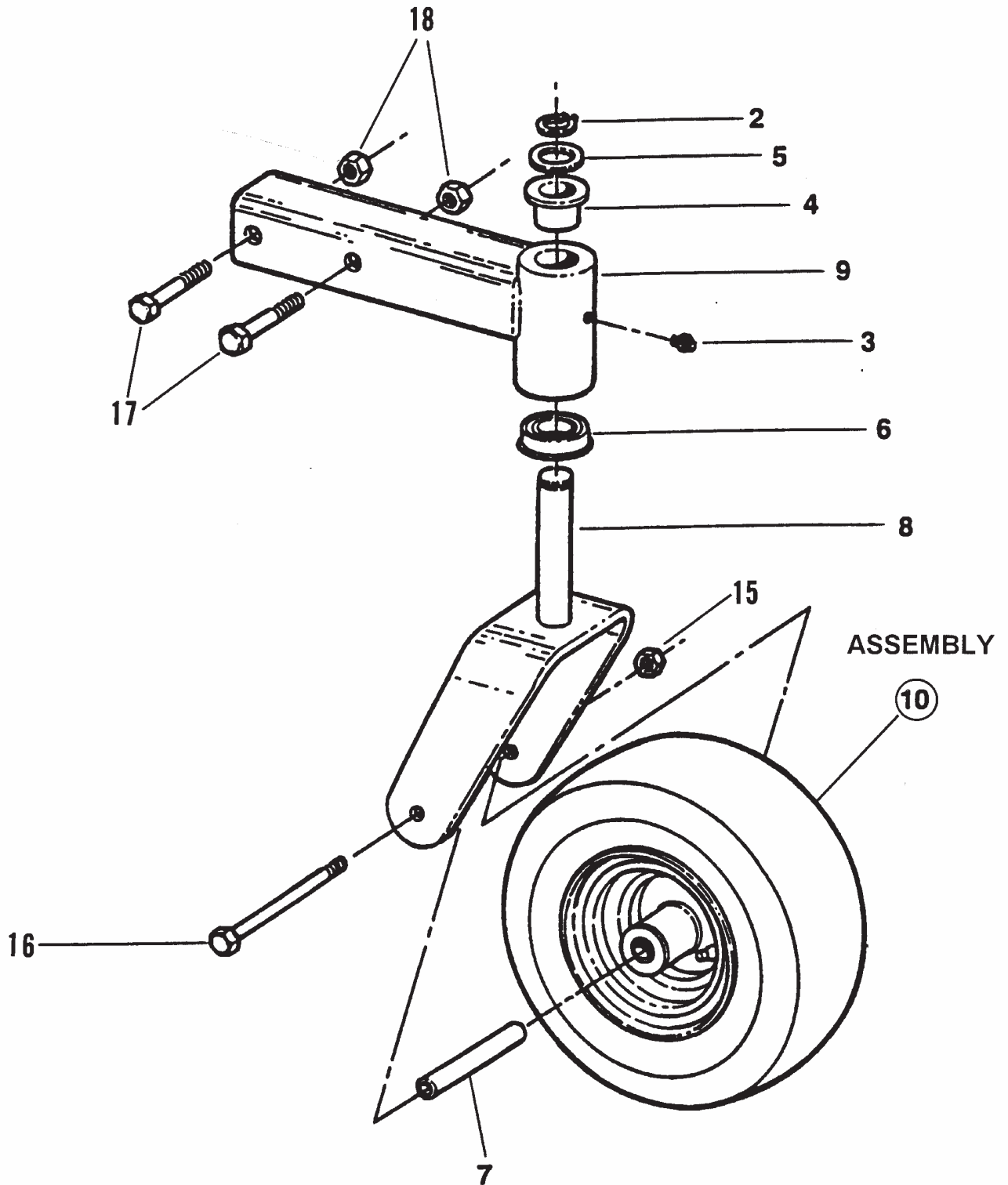


NOTE: UNLESS OTHERWISE SPECIFIED, ALL FLAT WASHERS ARE ITEMS 4 (22 TOTAL),  
AND ALL COTTER PINS ARE ITEMS 10 (16 TOTAL)

## 73" DECK FRAME ASSEMBLY

ITEM	PART NO.	DESCRIPTION
1	4-7171	PLATE, Diamond Tread Foot
2	9-1523	SCREW, 5/16-18 x 5/8" Hex Washer Head, Self-Tapping Swage (8)
3	9-0219	SCREW, 5/16 x 2-1/2" Hex Head Cap, Grade 2 (4)
4	9-1587	WASHER, 17/32 Flat (22)
5	4-3803	BRACKET, Deck Lift Hanger (2)
6	4-6595	ARM, Front Lift (Weldment)
7	4-7130	FRAME, Deck (Weldment)
8	4-6602	BAR, 7" Lift
9	1-2802	PIN, 1/2 x 1 1/8" Clevis (YZ) (2)
10	9-1516	PIN, 5/32 x 1" Cotter (16)
11	4-6508	ANGLE, Front Deck Mounting (L.H.)
12	4-6507	ANGLE, Front Deck Mounting (R.H.)
13	4-3824	BRACKET, Deck Lift, Rear (2)
14	4-6598	ROD, Timing, 1/2" Threaded (2)
15	4-6599	SWIVEL, .50 Thru Hole (4)
16	4-6596	ARM, Rear Bell Crank (L.H.) (Weldment)
17	4-6597	ARM, Rear Bell Crank (R.H.) (Weldment)
18	3-5496	BEARING, .75 I.D. (4)
19	4-6856	J-BOLT, 1/2" Dia. x 8 1/2" Long (Front)
20	4-6857	J-BOLT, 1/2" x 7" Long (Rear)
21	4-6603	BAR, 5.62 Lift
22	9-1298	NUT, 5/16-18-3B (YZ) (4)
23	9-1299	NUT, 3/8-16 Nyloc (YZ) (2)
24	9-0863	WASHER, 13/16 x 1 15/32" (HS) (2)
25	4-6594	CHANNEL, Deck Stabilizer (2)
26	4-7178	J-BOLT, Deck Attachment (2)
27	9-0735	BOLT, 1/2-13 x 4" Hex (HO) (3)
28	4-6605	SLEEVE, Stabilizer (2)
29	9-1922	NUT, 1/2-13 Nyloc, Regular (YZ) (2)
30	2-9258	BUSHING, Suspension (4)
31	3-6448	LINEAR ACTUATOR, 1000 Lbs., 4" Stroke
32	3-6454	INDICATOR, Height Of Cut
33	4-6593	BRACKET, Actuator Anchor
34	9-1218	SCREW, 1/2 UNC x 2.5 Hex Head Cap (Black Phosphate)
35	9-1501	SCREW, 3/8-16 x 2-1/2" Hex Head Cap (2)
36	9-1514	WASHER, .406 x .812 x .075" (YZ) (2)
37	4-7166	WIRE HARNESS, Deck Lift

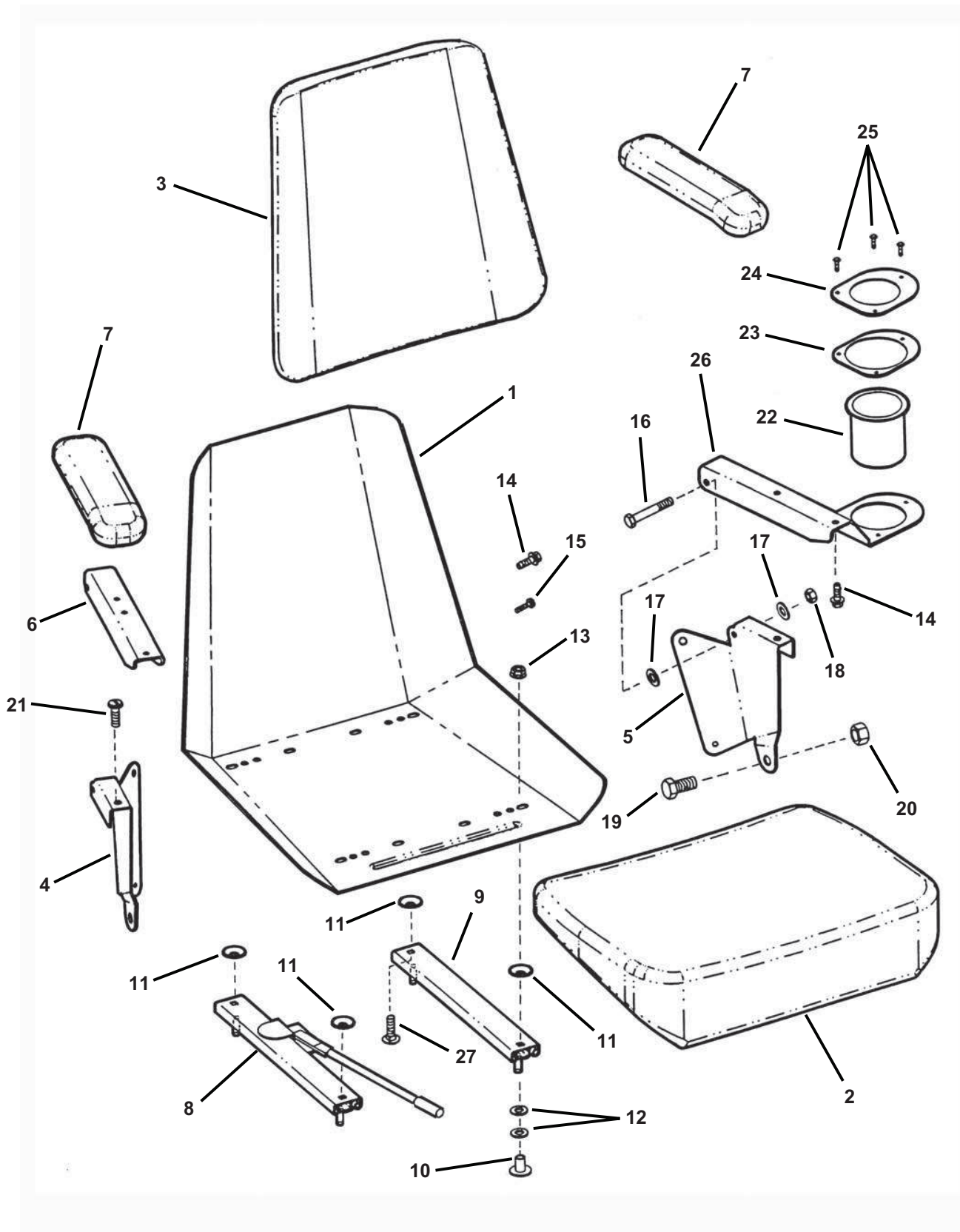
# 73" DECK FRONT CASTER ASSEMBLY



## 73" DECK FRONT CASTER ASSEMBLY

ITEM	PART NO.	DESCRIPTION
1	--	ASSEMBLY, 11" Front Caster (Includes Items 2 thru 14) (2)
2	1-2709	RING, 1" External Retaining
3	1-3864	FITTING, 3/16" Lube
4	2-3556	BUSHING, Caster
5	2-3747	BUSHING, 1" Machine
6	2-9141	BEARING, Flanged Ball
7	3-5359	TUBE, 5/8" x 18 Ga. Wall x 3.545
8	4-6620	YOKE, Caster (Weldment)
9	4-7138	ARM, Telescoping Caster (Weldment)
10	5-8248	ASSEMBLY, Wheel (Includes Items 11 thru 14)
11	1-2234	VALVE, Air
12	7-2197	HUB, Caster Wheel White
13	3-5358	BEARING, 5/8" I.D. x 1-3/8" (2)
14	3-5618	TIRE, 11 x 4.00-5 Smooth Tread
15	9-1917	NUT, 7/16-14 Hex Nyloc
16	9-1772	SCREW, 7/16-14 x 6" Hex Head Cap, Grade 5
17	9-1821	SCREW, 1/2-13 x 3" Hex Head Cap (2)
18	9-1922	NUT, 1/2-13 Hex Light Nyloc (2)

# SEAT ASSEMBLY



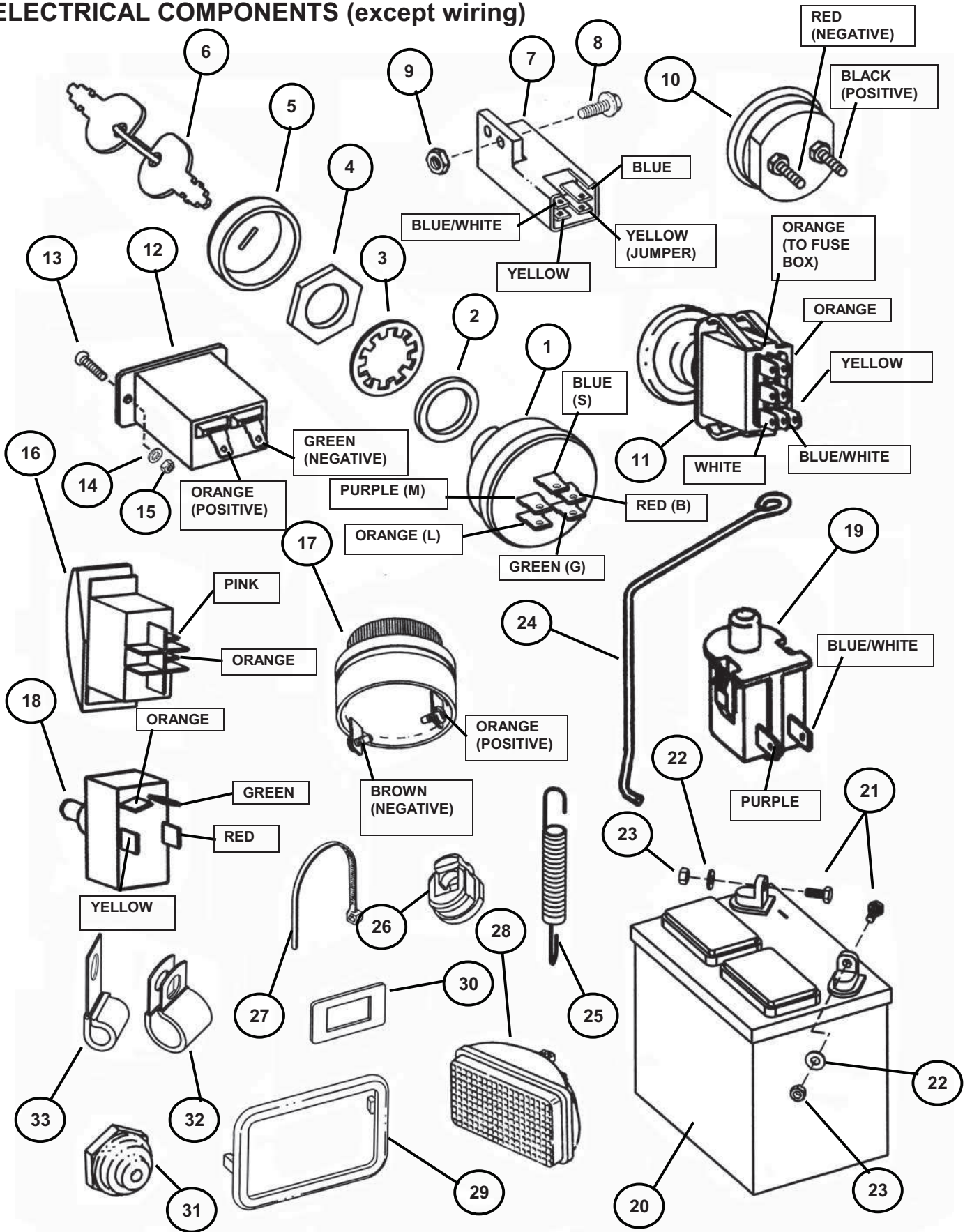
## SEAT ASSEMBLY

ITEM	PART NO.	DESCRIPTION
1	**	PAN, Complete
2	3-6476	CUSHION, Seat
3	3-6477	CUSHION, Back
4	4-4724	BRACKET, Armrest R.H.
5	3-5568	BRACKET, Armrest L.H.
6	3-6478	CHANNEL, Armrest (2)
7	3-6479	ARM PAD, Grey (2)
8	3-6484	ADJUSTER (with lock)
9	3-6485	ADJUSTER (without lock)
10	**	STUD GUARD (4)
11	3-6486	SPACER, Bell (4)
12	9-1296	WASHER, 11/32" Flat, Grade 5 (8)
13	9-1601	NUT, 5/16-18 Hex Flange Grade 5 (6)
14	**	SCREW, 1/4-20 x 3/4" Phillips (9)
15	**	SCREW, #8 x 1/2" Set (2)
16	2-7174	SCREW, 5/16-18 x 2" Hex Head Cap, Grade 5 (2)
17	3-5797	WASHER, .406 I.D. Poly (4)
18	9-1067	NUT, 5/16-18 Hex Center Lock Grade B (2)
19	9-0646	SCREW, 1/2-13 x 1" Hex Head Cap, Grade 5 (2)
20	9-0975	NUT, 1/2-13 Hex Head Center Lock, Grade 5 (2)
21	9-0683	SCREW, 5/16-18 x 1" Slotted Pan Head
22	4-2968	HOLDER, Beverage
23	4-4902	SPACER, Cup Holder
24	4-4903	COVER, Cup Holder
25	9-1919	RIVET, 3/16 Pan Head (3)
26	4-4904	BRACKET, Arm Rest Cup Holder
27	9-1303	BOLT, 5/16-18 x 1" Short Neck Carriage Gr. 5 (6)

**\*\*NOTE: Not a Sales Item.**

**Refer to Page 18 for Seat Support Components.**

# ELECTRICAL COMPONENTS (except wiring)

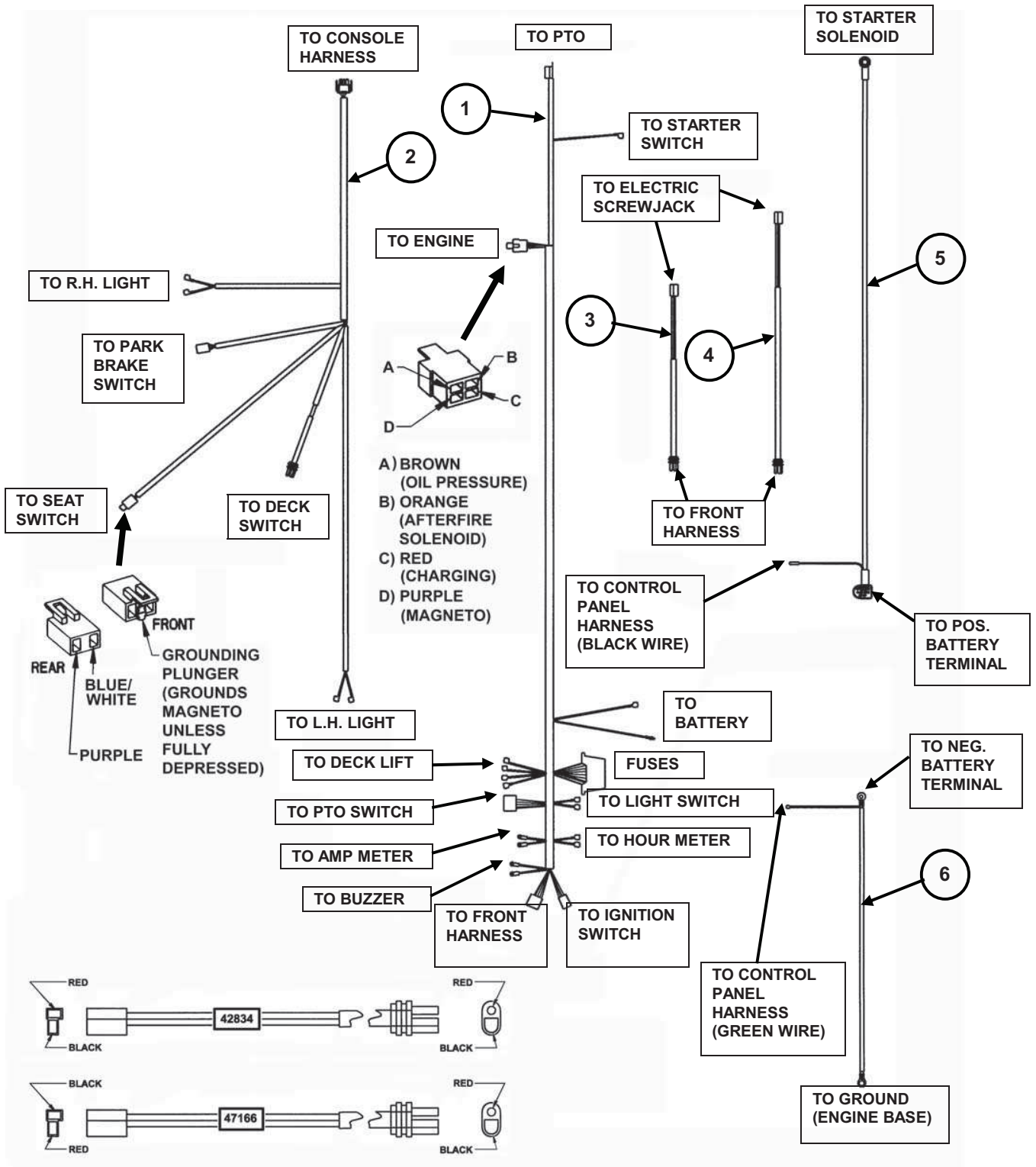




## ELECTRICAL COMPONENTS (except wiring)

ITEM	PART NO.	DESCRIPTION
1	2-6343	KEYSWITCH, Ignition- Afterfire Solenoid
2	1-6132	SPACER, 5/8"
3	9-1546	WASHER, 5/8" Internal Tooth Lock
4	1-2685	NUT, 5/8-32 Hex
5	2-3506	BEZEL
6	1-1138	KEY, and Ring
7	2-3355	SWITCH, DPDT
8	9-1240	SCREW, #10-32 x 5/8" Hex Wash. Hd. Machine, Grade 5 (2)
9	9-0376	NUT, #10-32 Hex Nyloc (2)
10	1-9547	ASSEMBLY, Ammeter and Clamp
11	3-5658	SWITCH, PTO
12	1-5277	HOUR METER, D.C. Series 1500
13	9-0927	SCREW, #6-32 Round Head Machine (2)
14	9-0926	WASHER, #6 Internal Tooth Lock (2)
15	9-0925	NUT, #6-32 Hex (for Machine Screw) (2)
16	3-5659	SWITCH, Lights
17	7-9208	BUZZER, Pulsing
18	3-5700	SWITCH, Self Centering, Deck Lift
19	2-3354	SWITCH, Seat NC (see page 18 for illustration)
20	3-5610	BATTERY, 11 Plate- 380CCA
21	9-0072	SCREW, 1/4-20 x 5/8", Hex Head Cap, Grade 5 (2)
22	9-0055	WASHER, .28 I.D. x .63 O.D. x .06 Flat (2)
23	9-0372	NUT, 1/4-20 Hex Center Lock, Grade 5 or B (2)
24	2-2366	BRACKET, Battery
25	2-2696	SPRING, Battery
26	3-5779	STRAIN RELIEF, Wire (2)
27	1-2080	CABLE TIE, 7" (15)
28	1-8829	HEAD LIGHT (2)
29	3-5550	BEZEL, Headlight (2)
30	3-5661	SPACER, PTO Switch
31	3-5702	SEAL, Switch
32	1-5861	CLIP, Harness
33	3-5638	CLIP, Open J, 3/8" Cushioned
34	9-1523	SCREW, 5/16-18 x 5/8" Hex Washer Self-Tap (2)
35	9-0585	NUT, 5/16-18 Hex Flange Lock, Grade 5

# ELECTRICAL COMPONENTS (wiring)

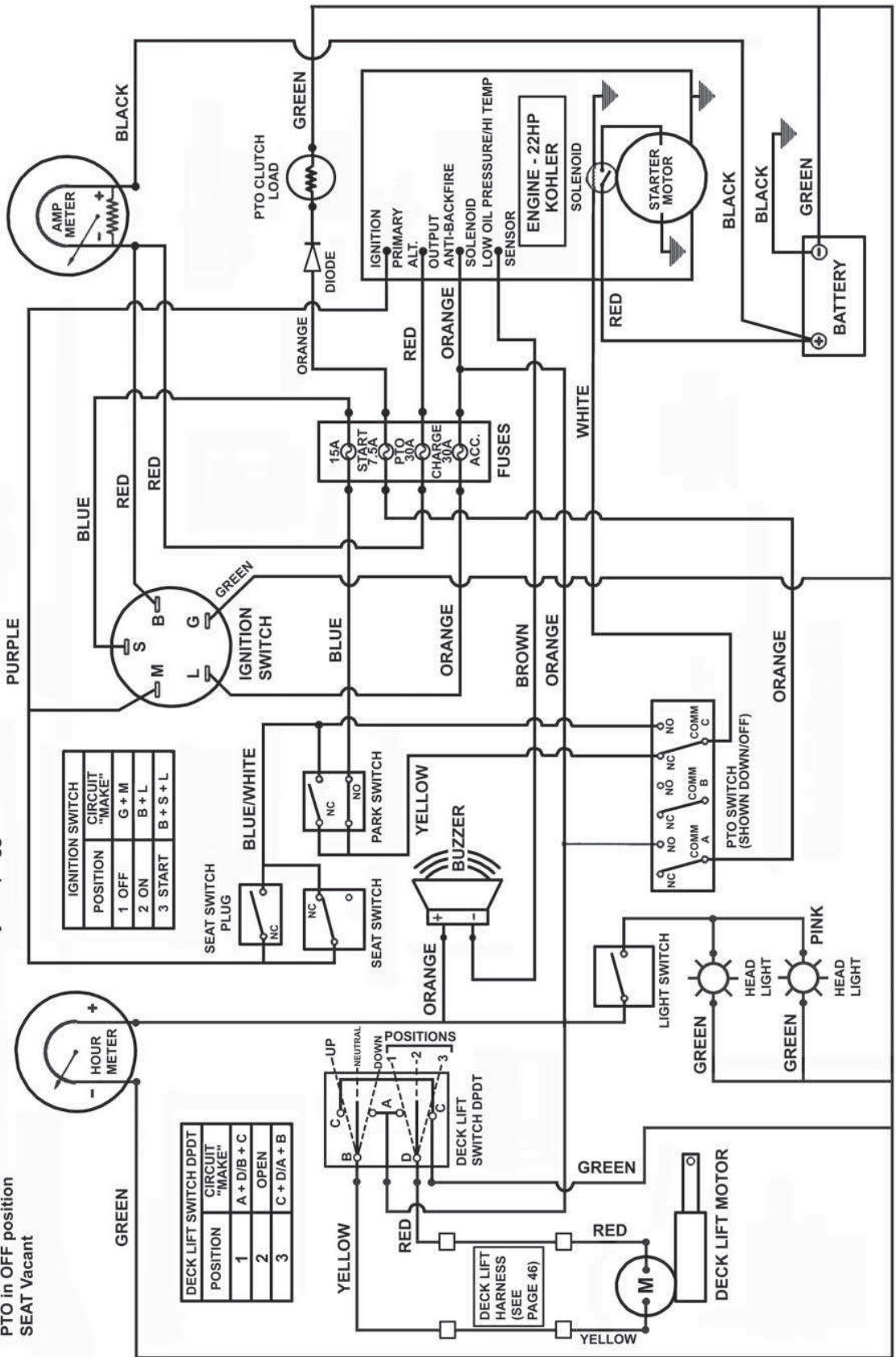


ITEM	PART NO.	DESCRIPTION
1	3-5606	HARNESS, Control Panel
2	3-5614	HARNESS, Front
3	4-2834	HARNESS, Deck Lift (15" Long)
4	4-7166	HARNESS, Deck Lift (21" Long) (for 73" Deck)
5	3-5607	CABLE, Battery- Positive
6	3-5609	CABLE, Battery- Negative

# WIRING SCHEMATIC

NOTE 1: Switches shown with, Park Lever in Park PTO in OFF position SEAT Vacant

NOTE 2: Seat Switch Plug makes continuity if unplugged



CONTROL PANEL HARNESS, PART NUMBER 3-5606  
 FRONT HARNESS, PART NUMBER 3-5614 and  
 DECK LIFT HARNESS, PART NUMBERS 4-2834 and 4-7166

*Parts Manual for*

**SNAPPER®**

**OUT FRONT Z-RIDER™**

**ZERO TURNING HYDRO DRIVE**

**SERIES 1 & 2**

IT IS THE POLICY OF SNAPPER TO IMPROVE ITS PRODUCTS WHENEVER IT IS POSSIBLE AND PRACTICAL TO DO SO. WE RESERVE THE RIGHT TO MAKE CHANGES OR ADD IMPROVEMENTS AT ANY TIME WITHOUT INCURRING ANY OBLIGATION TO MAKE SUCH CHANGES ON PRODUCTS MANUFACTURED PREVIOUSLY.

**SNAPPER**® McDonough, GA., 30253 U.S.A.

COPYRIGHT © 2002  
SNAPPER INC.  
ALL RIGHTS RESERVED

MANUAL No. 06107

(Rev. 1, 06/30/02)

PRINTED IN U.S.A.