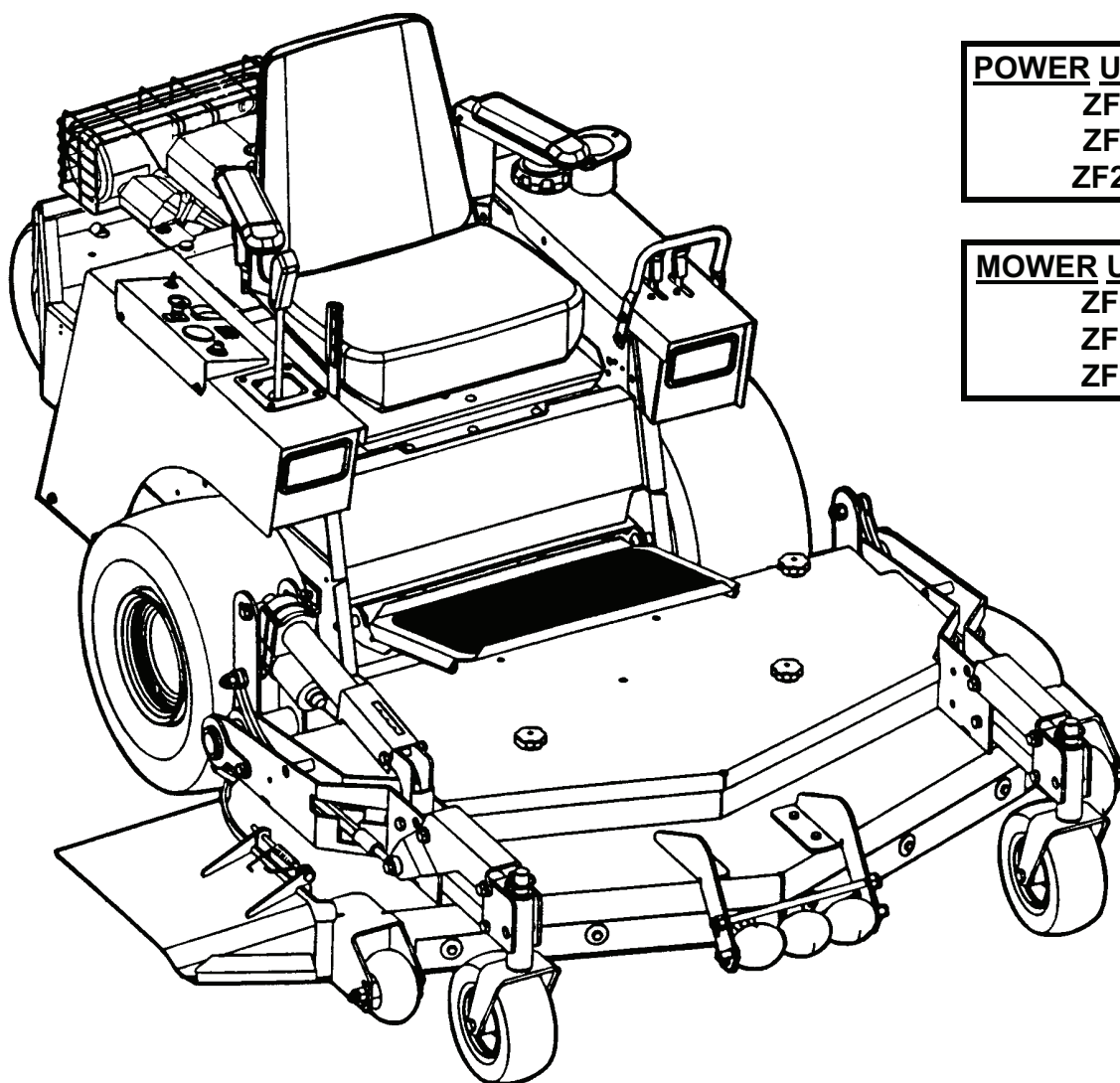


Parts Manual for
SNAPPER[®]

[™]
OUT FRONT Z-RIDER
ZERO TURNING HYDRO DRIVE
SERIES 0



POWER UNIT MODELS

ZF2200K
ZF2500K
ZF2500KH

MOWER UNIT MODELS

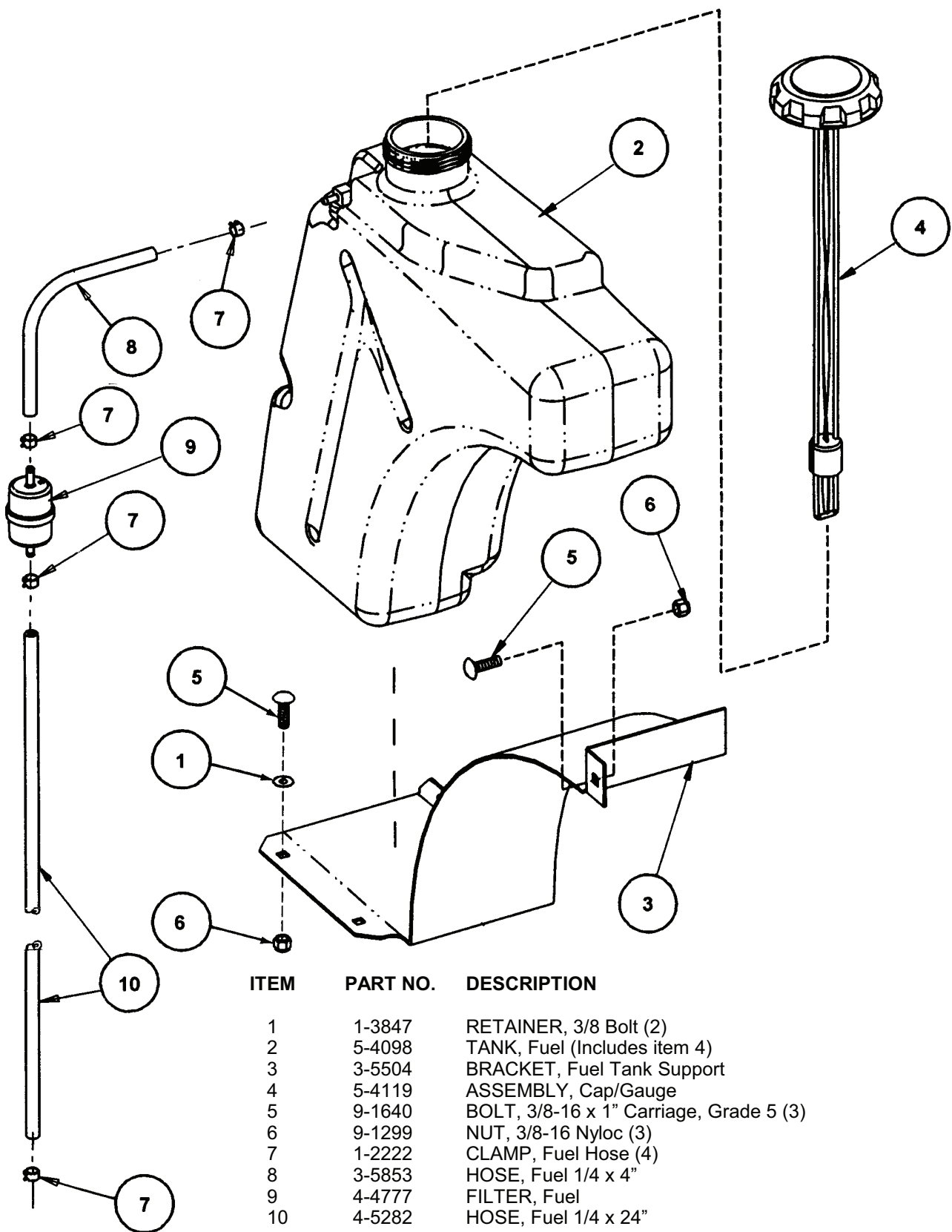
ZF6100M
ZF5200M
ZF7301M

SNAPPER[®] McDonough, GA., 30253 U.S.A.

CONTENTS

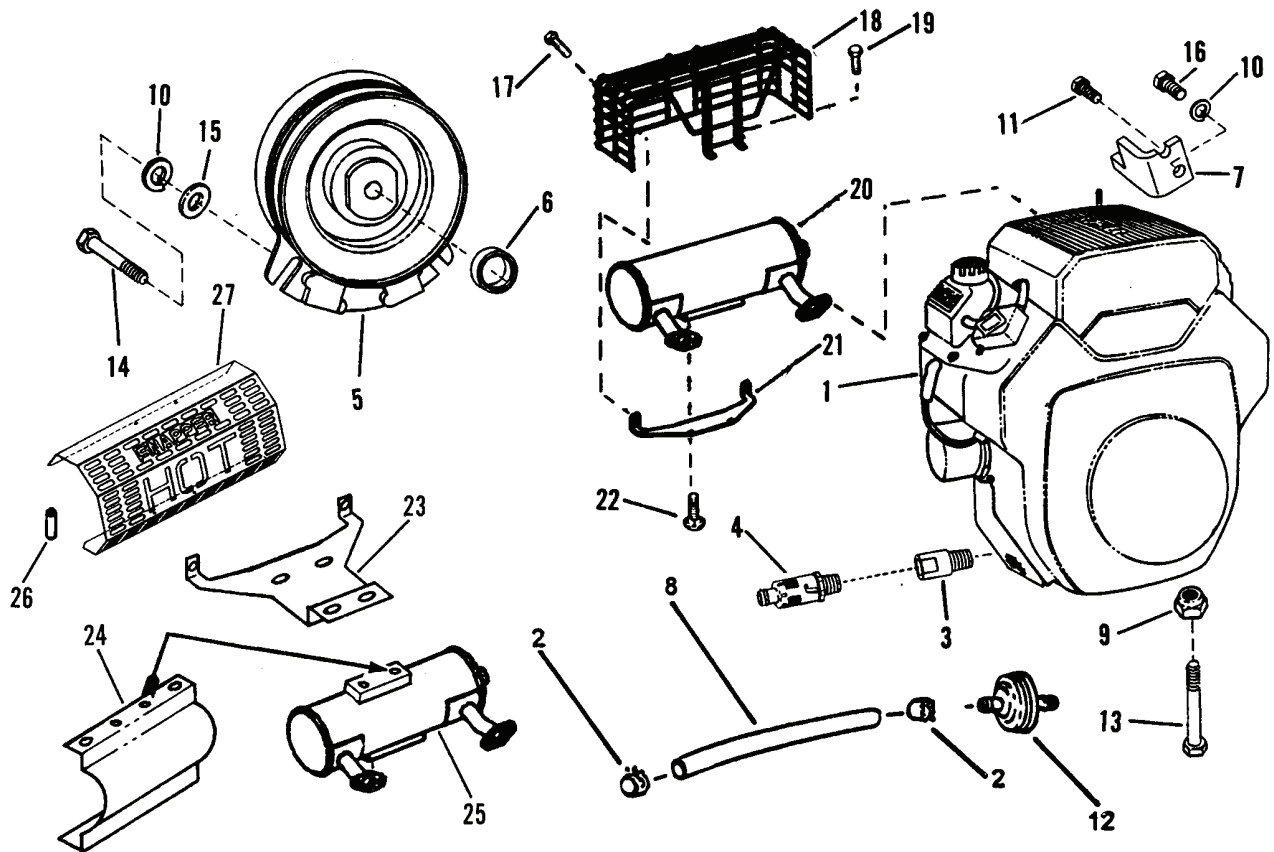
| <u>DESCRIPTION</u> | <u>PAGE</u> |
|--|-------------|
| FUEL TANK ASSEMBLY..... | 3 |
| ENGINE ASSEMBLY | 4 |
| AIR INTAKE ASSEMBLY..... | 5 |
| TANDEM HYDRO TRANSAXLE ASSEMBLY | 6 & 7 |
| DRIVE TIRE/WHEEL ASSEMBLY | 8 |
| FOOTREST ASSEMBLY | 9 |
| HYDRO RESERVOIR ASSEMBLY | 10 |
| UPPER CHASSIS AND SEAT LATCH ASSEMBLY..... | 11 |
| LOWER CHASSIS/CASTER WHEEL ASSEMBLY | 12 & 13 |
| JOYSTICK CONTROL ASSEMBLY | 14 & 15 |
| PARKING BREAK ASSEMBLY | 16 & 17 |
| SEAT SUPPORT ASSEMBLY | 18 |
| FENDER/CONTROL CABLE ASSEMBLY | 19 |
| UPPER DRIVE SHAFT ASSEMBLY..... | 20 & 21 |
| DECK DRIVE SHAFT ASSEMBLY | 22 & 23 |
| CUTTER HOUSING ASSEMBLY..... | 24 |
| TRACTION DRIVE IDLER ASSEMBLY..... | 25 |
| DECALS | 26 & 27 |
| 52" MOWER DECK ASSEMBLY..... | 28 & 29 |
| 61" MOWER DECK ASSEMBLY..... | 30 & 31 |
| 73" MOWER DECK SUB-ASSEMBLY | 32 & 33 |
| 73" MOWER DECK ASSEMBLY..... | 34 & 35 |
| 52 & 61" DECK IDLER ASSEMBLIES | 36 & 37 |
| 73" DECK FRAME ASSEMBLY | 38 & 39 |
| 73" DECK FRONT CASTER ASSEMBLY | 40 & 41 |
| ELECTRICAL COMPONENTS | 42 & 43 |
| SEAT ASSEMBLY | 44 & 45 |
| WIRING SCHEMATIC | 46 |

FUEL TANK ASSEMBLY



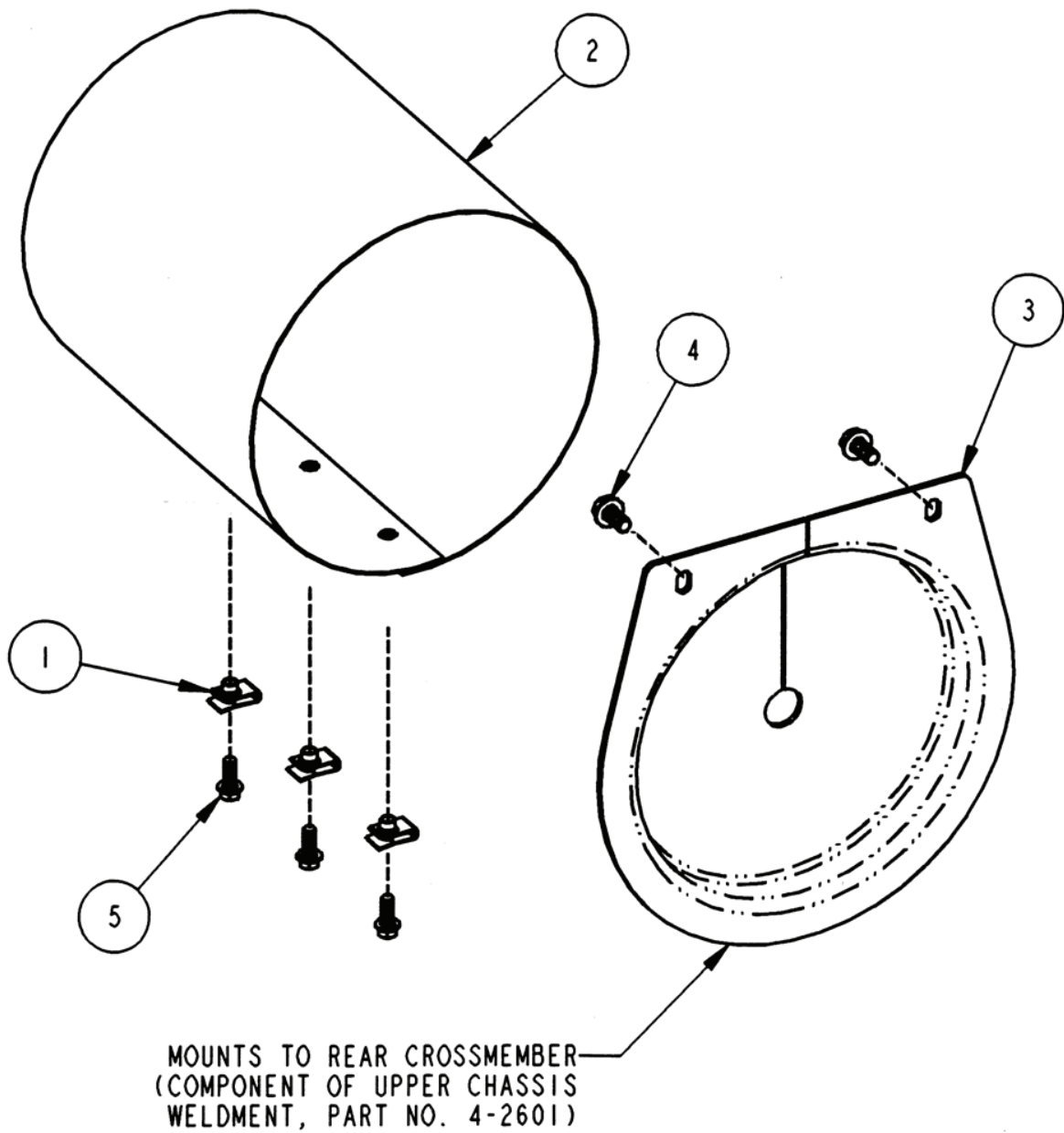
| ITEM | PART NO. | DESCRIPTION |
|------|----------|---|
| 1 | 1-3847 | RETAINER, 3/8 Bolt (2) |
| 2 | 5-4098 | TANK, Fuel (Includes item 4) |
| 3 | 3-5504 | BRACKET, Fuel Tank Support |
| 4 | 5-4119 | ASSEMBLY, Cap/Gauge |
| 5 | 9-1640 | BOLT, 3/8-16 x 1" Carriage, Grade 5 (3) |
| 6 | 9-1299 | NUT, 3/8-16 Nyloc (3) |
| 7 | 1-2222 | CLAMP, Fuel Hose (4) |
| 8 | 3-5853 | HOSE, Fuel 1/4 x 4" |
| 9 | 4-4777 | FILTER, Fuel |
| 10 | 4-5282 | HOSE, Fuel 1/4 x 24" |

ENGINE SUB-ASSEMBLY



| ITEM | PART NO. | DESCRIPTION |
|------|----------|--|
| 1 | --- | ENGINE, 22 HP (Kohler Part No. CH22S PS-66536) |
| -- | --- | ENGINE, 25 HP (Kohler Part No. CH25S PS-68577) |
| 2 | 1-2222 | CLAMP, Fuel Hose (2) |
| 3 | 2-2486 | OIL DRAIN, Short |
| 4 | 2-7972 | ASSEMBLY, Oil Valve |
| 5 | 3-5520 | CLUTCH, Electric, Commercial Magstop |
| 6 | 3-5675 | SPACER, Clutch |
| 7 | 3-5852 | BRACKET, Anti-Rotation (5/16") |
| 8 | 3-5853 | HOSE, Fuel 1/4 x 4" |
| 9 | 9-1299 | NUT, 3/8-16 Nycloc (4) |
| 10 | 9-1301 | WASHER, 7/16" Split Lock (2) |
| 11 | 9-1304 | SCREW, 3/8-16 x 1" Hex Head Cap, Grade 5 |
| 12 | 1-4359 | FILTER, Fuel (in-line) |
| 13 | 9-1553 | SCREW, 3/8-16 x 1-3/4" Hex Head Cap, Grade 5 (4) |
| 14 | 9-1806 | SCREW, 7/16-20 x 1-1/2" Hex Head Cap Grade 5 |
| 15 | 9-1807 | WASHER, 15/32 I.D. x 1-3/8 O.D. x 1/4 Flat |
| 16 | 9-1808 | SCREW, 7/16-14 x 1", Grade 5 |
| 17 | 9-1840 | SCREW, M5 x 10mm Pan Head Cap (2) |
| 18 | 4-2707 | GUARD, Muffler |
| 19 | 9-1839 | SCREW, M5 x 16mm Hex Head Self Tapping (2) |
| 20 | --- | MUFFLER, 22 HP (Kohler Part No. A-24 068 00) |
| 21 | 4-2708 | BRACKET, Muffler |
| 22 | 9-1838 | SCREW, M6 x 12.5mm Hex Flange Cap (2) |
| 23 | 4-6486 | BRACKET, Muffler 25 HP Kohler |
| 24 | 4-6487 | SHIELD, Heat 25 HP Kohler |
| 25 | --- | MUFFLER, 25 HP (Kohler Part No. A-24 068 17) |
| 26 | 7-2256 | SPACER, Muffler Guard |
| 27 | 7-2155 | GUARD, Muffler "Snapper" |

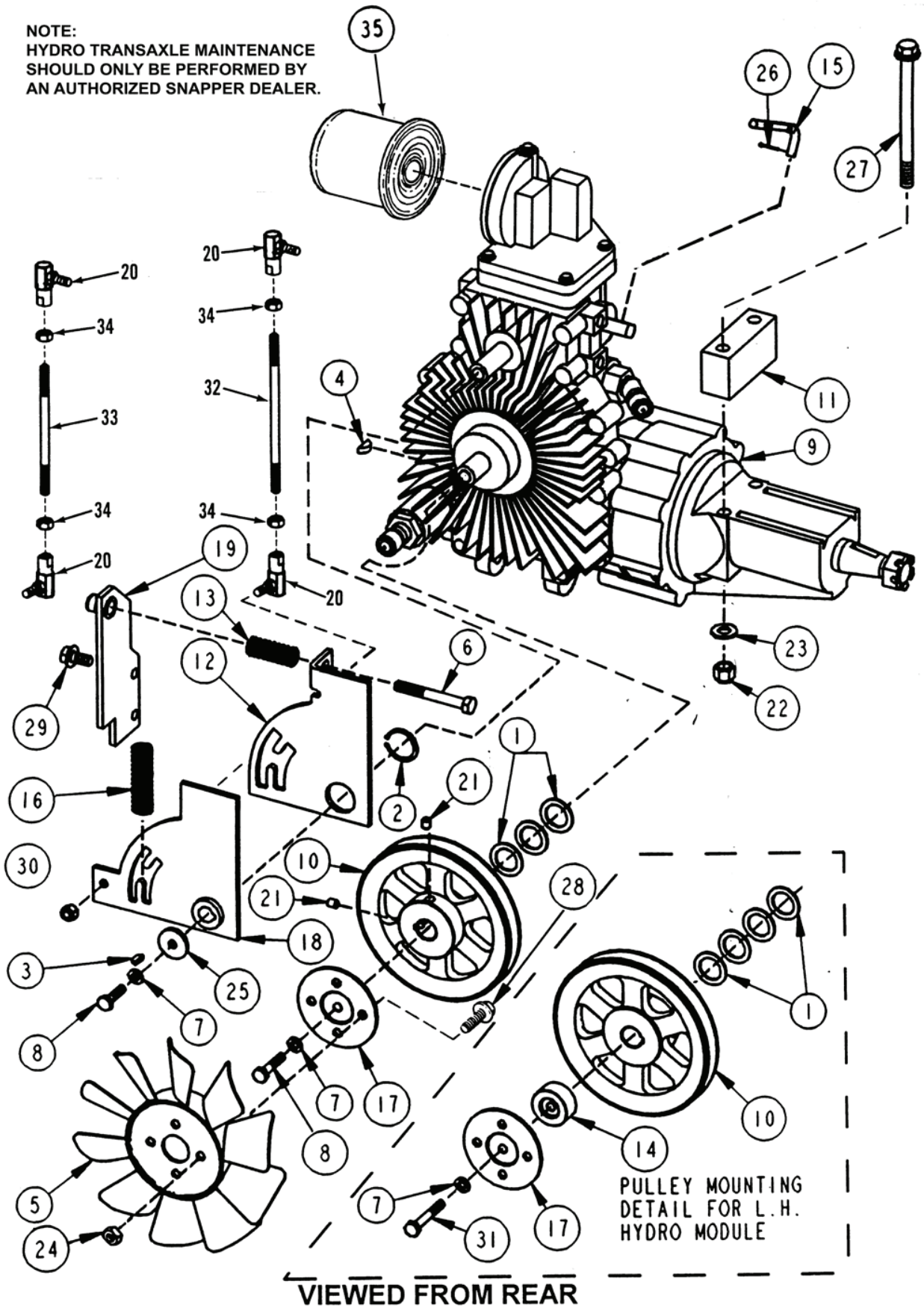
AIR INTAKE ASSEMBLY



| ITEM | PART NO. | DESCRIPTION |
|------|----------|--|
| 1 | 2-3295 | U-NUT, 1/4-20 (3) |
| 2 | 3-5767 | SCREEN, Air Intake |
| 3 | 3-5768 | MOUNT, Air Intake |
| 4 | 9-0361 | SCREW, 5/16-18 x 5/8" Hex Fl. Self-Tap (2) |
| 5 | 9-1787 | SCREW, 1/4-20 Hex Flange Lock (3) |

TANDEM HYDRO TRANSAXLE ASSEMBLY

NOTE:
HYDRO TRANSAXLE MAINTENANCE
SHOULD ONLY BE PERFORMED BY
AN AUTHORIZED SNAPPER DEALER.

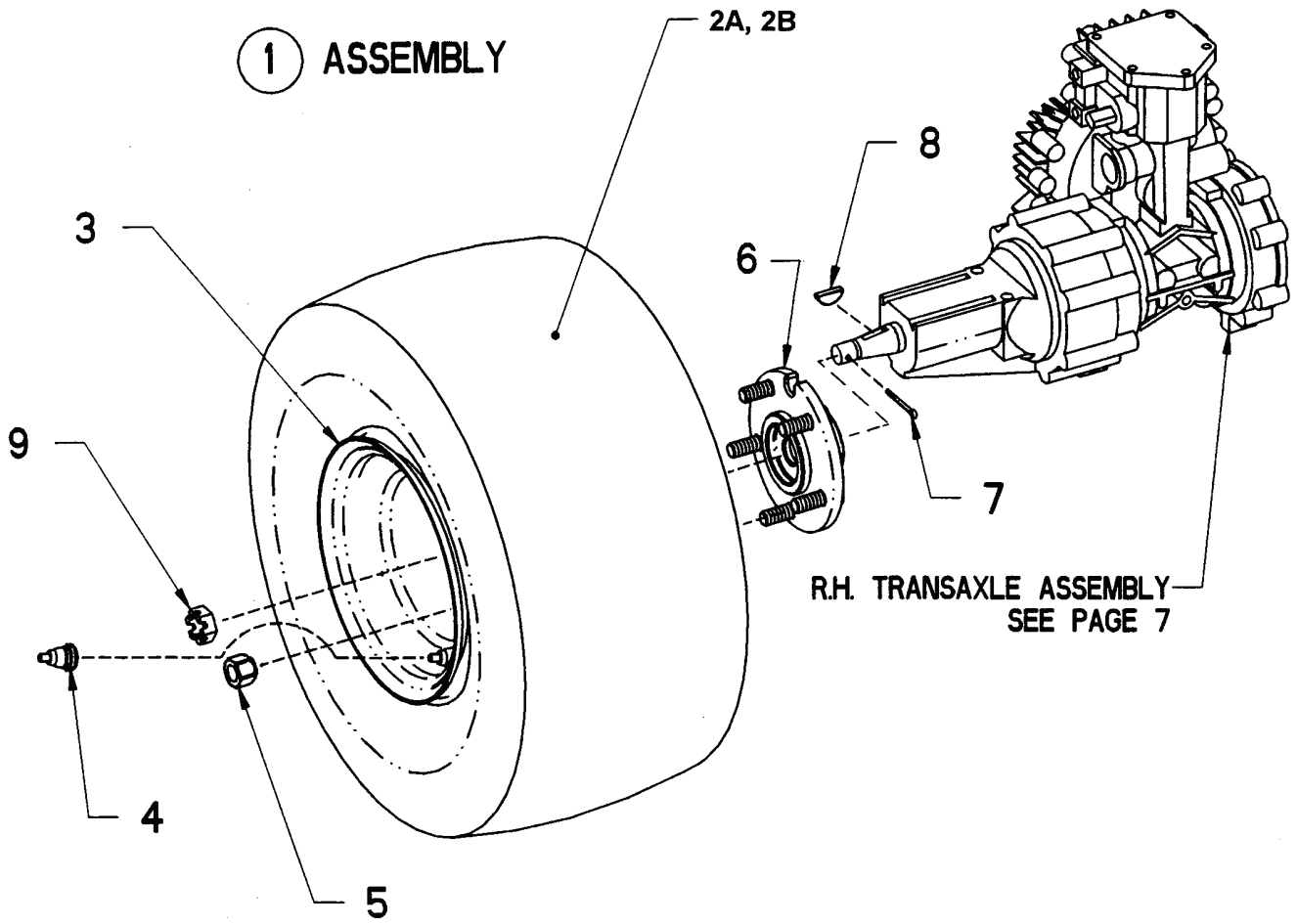


PULLEY MOUNTING
DETAIL FOR L. H.
HYDRO MODULE

TANDEM HYDRO TRANSAXLE ASSEMBLY

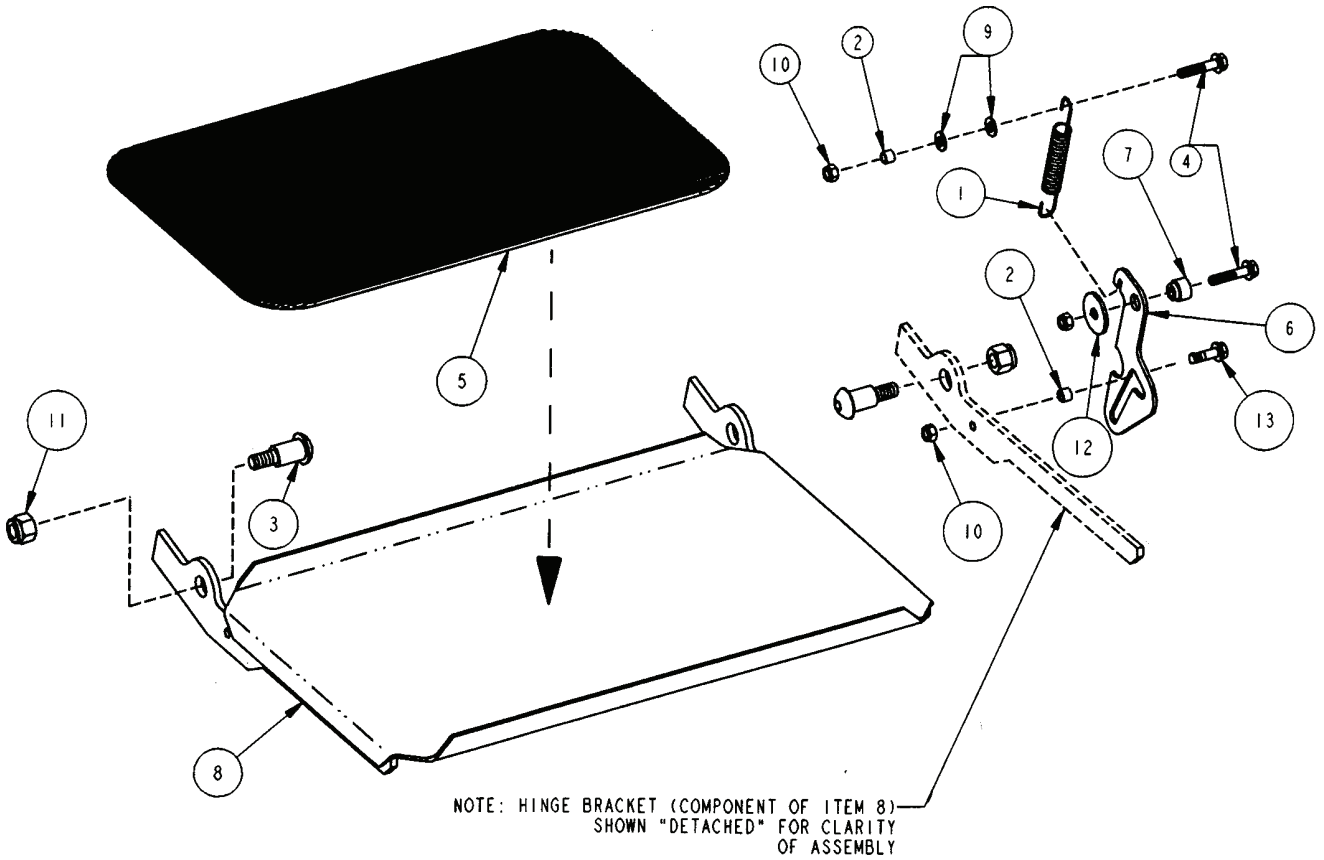
| ITEM | PART NO. | DESCRIPTION |
|------|----------|--|
| 1 | 1-0935 | WASHER, 3/4 I.D. x 1-1/8" O.D. Flat (7) |
| 2 | 1-2709 | RETAINING RING, 1" External (2) |
| 3 | 1-4264 | WOODRUFF KEY, #404 (2) |
| 4 | 1-5894 | WOODRUFF KEY, #605 (2) |
| 5 | 1-8978 | FAN, 10 Blade 7" Dia. (2) |
| 6 | 2-7175 | BOLT, 5/16-18 x 2-1/2" Hex Head (2) |
| 7 | 2-7223 | WASHER, 1/4 Split Lock (4) |
| 8 | 9-1814 | SCREW, 1/4-20 x 1-1/4", Hex Head Cap (3) |
| 9 | 3-5522 | ASSEMBLY, Transaxle 771B (R.H.) Side (shown) |
| -- | 5-8190 | same as above but with 25 PSI bypass filter |
| -- | 3-5521 | ASSEMBLY, Transaxle 771A (L.H.) Side |
| -- | 5-8190 | same as above but with 25 PSI bypass filter |
| 10 | 3-5547 | PULLEY, Transmission Input (2) |
| 11 | 3-5634 | SPACER, Transaxle (2) |
| 12 | 3-5910 | PLATE, Neutral Adjust (2) |
| 13 | 3-5915 | SPRING, Neutral Return Adjust (2) |
| 14 | 3-5923 | SPACER/ADAPTER, Fan |
| 15 | 3-5925 | ROD, Roll Release (2) |
| 16 | 3-5927 | SPRING, Neutral Return (2) |
| 17 | 4-2612 | SPACER, Fan (Weldment) (2) |
| 18 | 4-2639 | CAM, Neutral Return (Weldment) (2) |
| 19 | 5-4293 | PLATE, Neutral Return (Weldment) (2) |
| 20 | 1-5753 | BALL-JOINT (4) |
| 21 | 9-0201 | SET SCREW, 5/16-18 x 5/16" Hex Recess (4) |
| 22 | 9-1299 | NUT, 3/8-16, Hex Nyloc (4) |
| 23 | 9-1514 | WASHER, 13/32 I.D. x 13/16 O.D. Flat (4) |
| 24 | 9-1603 | NUT, 1/4-20 Hex Nyloc (8) |
| 25 | 9-1627 | WASHER, 1/4 I.D. x 1" O.D. (2) |
| 26 | 9-1629 | COTTER-PIN, 1/16 x 1/2" (2) |
| 27 | 9-1786 | BOLT, 3/8-16 x 4-3/4" Grade 5 (4) |
| 28 | 9-1787 | SCREW, 1/4-20 x 5/8", Hex Flange Lock, Grade 5 (8) |
| 29 | 9-1811 | BOLT, 5/16-18 x 5/8", Hex Flange Lock (4) |
| 30 | 9-1812 | NUT, 1/4-28, Hex Nyloc (4) |
| 31 | 9-0505 | SCREW, 1/4-20 x 2", Hex Head Cap, Grade 5 |
| 32 | 3-5914 | ROD, Threaded 1/4-28 x 5-3/8" |
| 33 | 3-5916 | ROD, Threaded 1/4-28 x 4-3/8" |
| 34 | 9-1605 | NUT, 1/4-28 Hex, Grade 5 or B (4) |
| 35 | 4-2715 | FILTER, Oil (EATON No. 103144) |

DRIVE TIRE/WHEEL ASSEMBLY



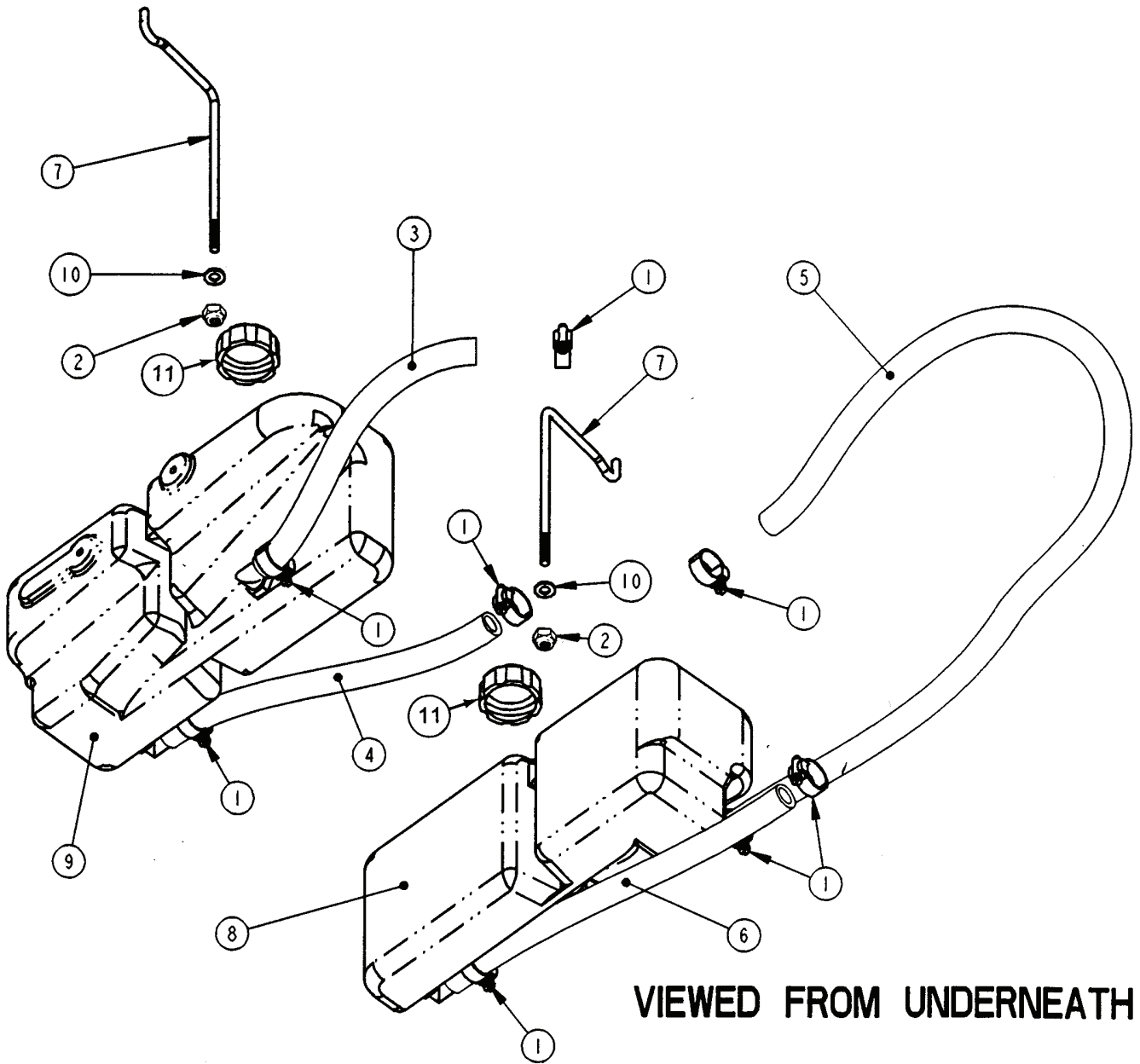
| ITEM | PART NO. | DESCRIPTION |
|------|----------|---|
| 1 | 5-4109 | ASSEMBLY, Rear Tire & Rim (Includes Item 2A, 3 & 4) |
| -- | 5-4510 | ASSEMBLY, Rear Tire & Rim (Includes 2B, 3 & 4) |
| 2A | 5-4110 | TIRE, 20 x 10.00-8 4 ply "Multi-trac C/S" |
| 2B | 4-4707 | TIRE, 21 x 11.00-8 "All Terrain 101" |
| 3 | 5-4111 | RIM, 8" Dia. X 7-3/4" |
| 4 | 1-2234 | VALVE, Air |
| 5 | 2-7192 | NUT, 1/2-20 Lug (5) |
| 6 | 5-4461 | ASSEMBLY, Wheel Hub |
| 7 | 9-1793 | PIN, Cotter, 9/64 x 1-1/2 |
| 8 | 9-1778 | KEY, #808 Woodruff |
| -- | 9-1978 | KEY, #806 Woodruff |
| 9 | 9-1828 | NUT, 3/4-20 Slotted Hex |

FOOTREST ASSEMBLY



| ITEM | PART NO. | DESCRIPTION |
|------|----------|--|
| 1 | 2-2696 | SPRING |
| 2 | 2-8810 | BUSHING, 5/16 I.D. x 7/16 O.D. x 3/16 (2) |
| 3 | 3-5849 | BOLT, 1/2-13, 3/4 Dia. X 1-1/16 Shoulder (2) |
| 4 | 9-1602 | BOLT, 5/16-18 x 1-1/2 Hex Flange Lock, Grade 5 (2) |
| 5 | 3-5855 | FOOT PAD, Rubber |
| 6 | 3-5978 | PLATE, Footrest Latch |
| 7 | 3-5979 | SPACER, Shoulder (Latch) |
| 8 | 4-2630 | FOOTREST (Weldment) |
| 9 | 9-1296 | WASHER, 11/32 I.D. x 11/16 O.D. x 1/16" Flat (2) |
| 10 | 9-1298 | NUT, 5/16-18 Nyloc (3) |
| 11 | 9-1325 | NUT, 1/2-13 Nyloc (2) |
| -- | 9-1894 | NUT, 1/2-13 Hex Center Lock, Grade 5 (2) |
| 12 | 9-1331 | WASHER, 13/32 I.D. x 1-1/2 O.D. x 1/8" Flat |
| 13 | 9-1591 | BOLT, 5/16-18 x 1 Hex Flange Lock, Grade 5 |

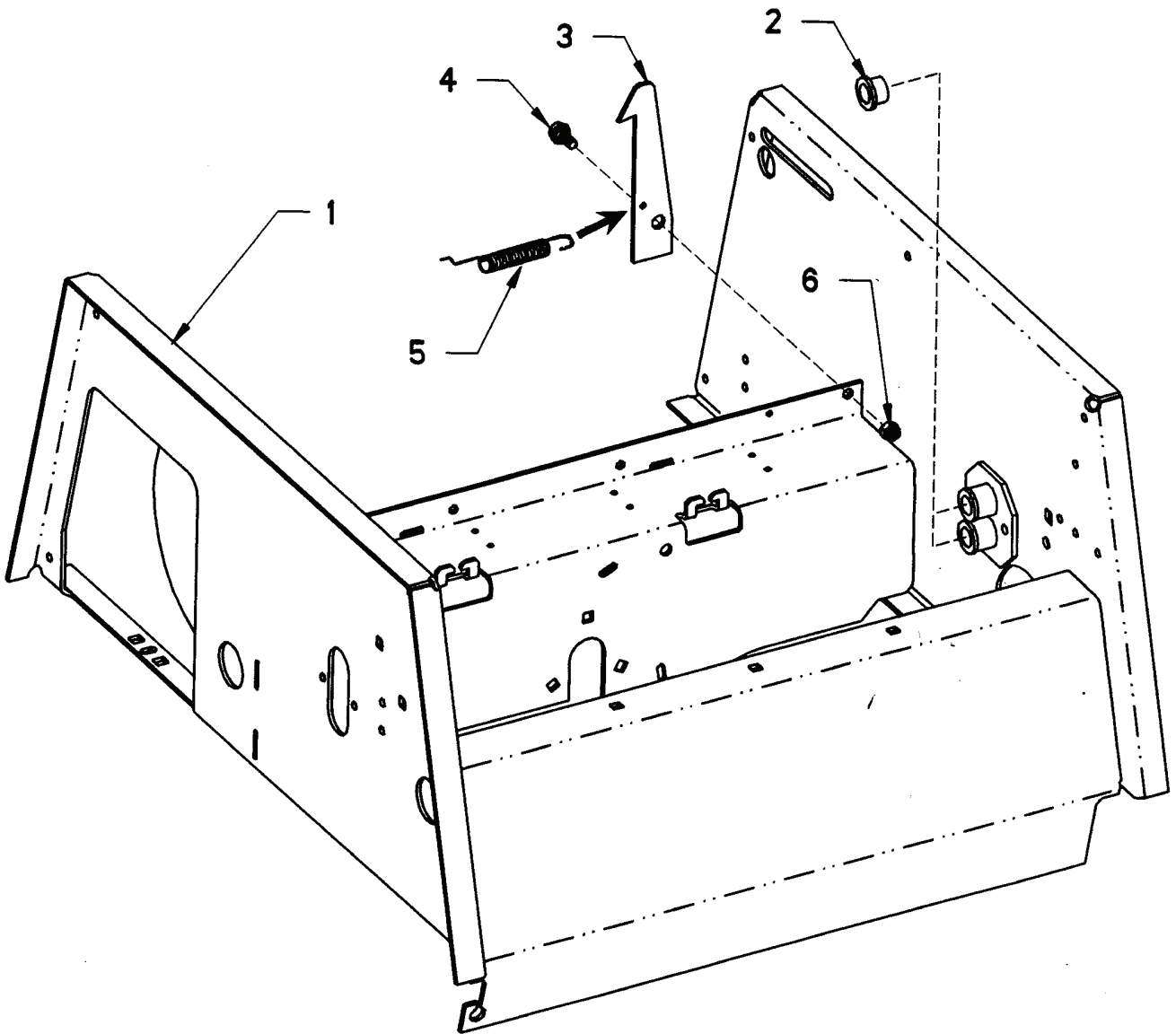
HYDRO RESERVOIR ASSEMBLY



VIEWED FROM UNDERNEATH

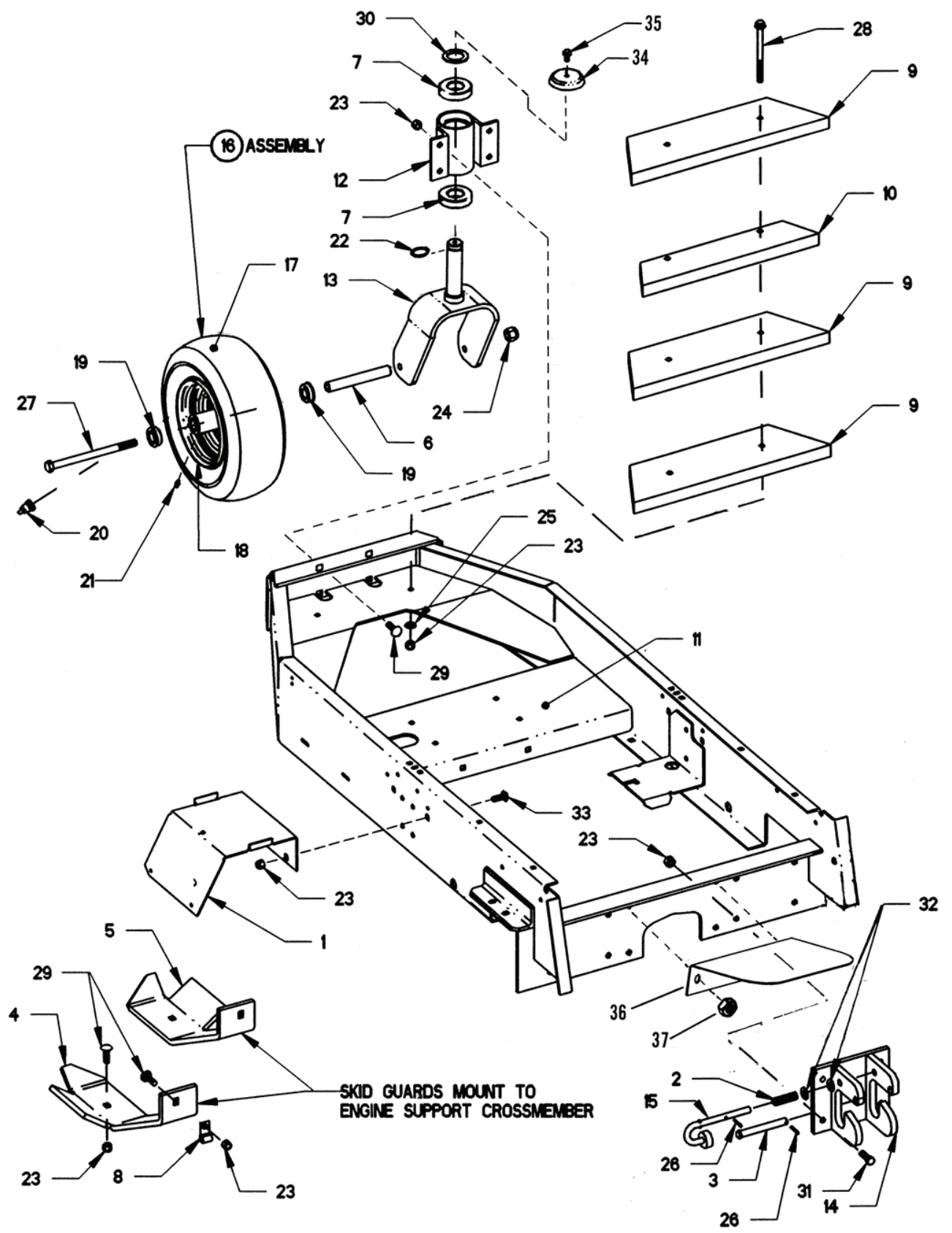
| ITEM | PART NO. | DESCRIPTION |
|------|----------|--|
| 1 | 1-6130 | CLAMP, Hose 13/16" (8) |
| 2 | 9-1298 | NUT, 5/16-18 Nyloc (2) |
| 3 | 3-5514 | HOSE, Rubber R.H. Front (.625 I.D. x 13-1/2" Long) |
| 4 | 3-5515 | HOSE, Rubber R.H. Back (.625 I.D. x 16" Long) |
| 5 | 3-5516 | HOSE, Rubber L.H. Front (.625 I.D. x 24" Long) |
| -- | 4-1834 | HOSE, Rubber (.625 I.D. x 34" Long) |
| 6 | 3-5517 | HOSE, Rubber L.H. Back (.625 I.D. x 18" Long) |
| -- | 4-1833 | HOSE, Rubber (.625 I.D. x 6" Long) |
| 7 | 3-5639 | BRACKET, Reservoir (2) |
| 8 | 5-4703 | RESERVOIR, L.H. Hydro (includes cap, item 11) |
| 9 | 5-4103 | RESERVOIR, R.H. Hydro (includes cap, item 11) |
| 10 | 9-1296 | WASHER, 11/32 I.D. x 11/16" O.D. (2) |
| 11 | 3-5512 | CAP, Reservoir |

UPPER CHASSIS AND SEAT LATCH ASSEMBLY



| ITEM | PART NO. | DESCRIPTION |
|------|----------|------------------------|
| 1 | 4-2601 | UPPER CHASSIS |
| 2 | 1-3874 | BUSHING, 5/8" PM (2) |
| 3 | 3-5993 | LATCH, Seat Support |
| 4 | 1-5761 | BOLT, 5/16-18 Shoulder |
| 5 | 2-6292 | SPRING |
| 6 | 9-1298 | NUT, 5/16-18 Hex Nyoc |

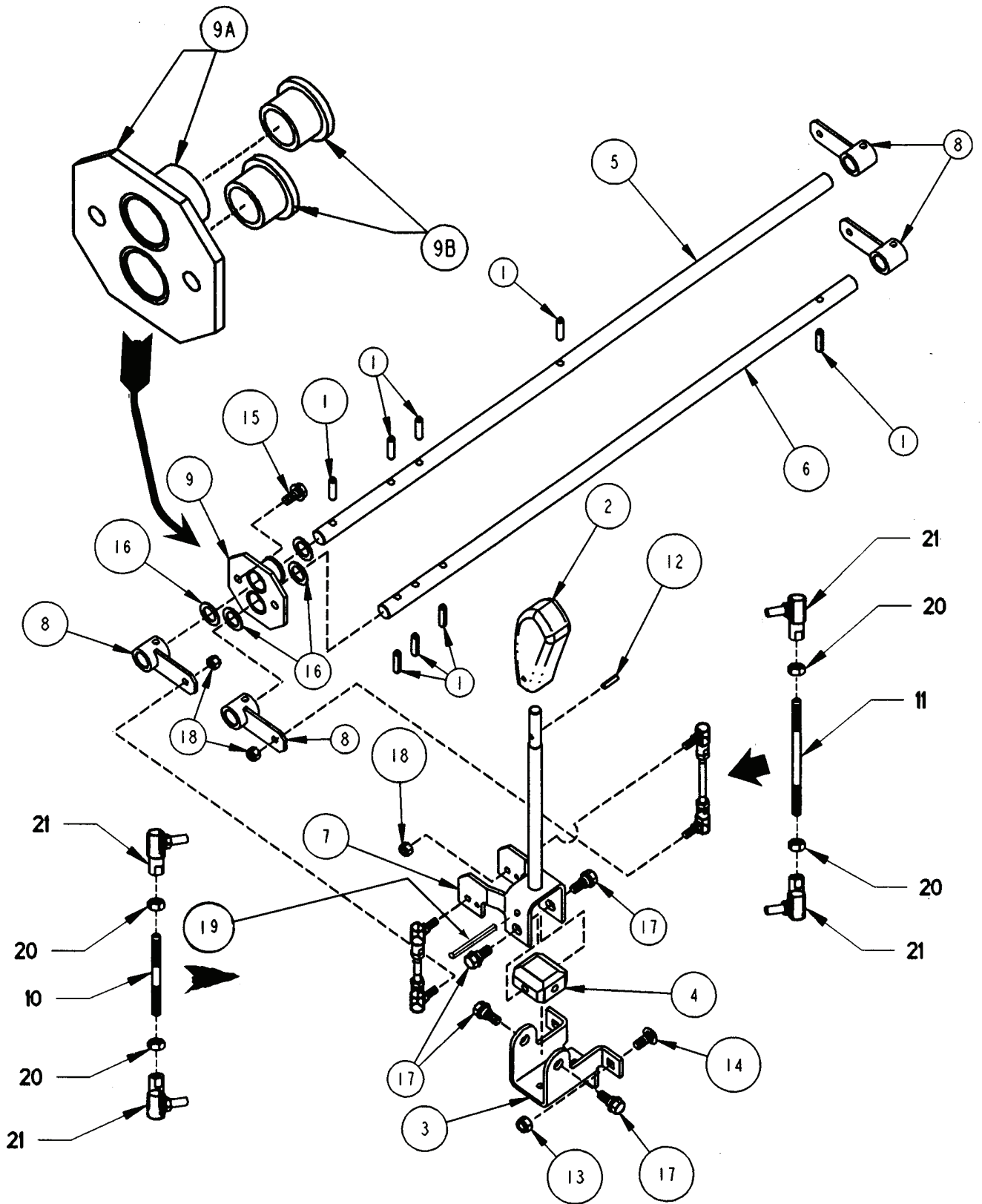
LOWER CHASSIS/CASTER WHEEL-ASSEMBLY



LOWER CHASSIS/CASTER WHEEL-ASSEMBLY

| ITEM | PART NO. | DESCRIPTION |
|------|----------|--|
| 1 | 3-6406 | BRACKET, Battery Support |
| 2 | 1-4432 | SPRING (2) |
| 3 | 2-9074 | PIN, Clevis 1/2 x 4" (2) |
| 4 | 3-5468 | SKID GUARD, R.H. |
| 5 | 3-5469 | SKID GUARD L.H. |
| 6 | 3-5476 | SLEEVE, Axle |
| 7 | 3-5602 | BEARING, 30mm x 62mm (2) |
| 8 | 3-5638 | J-CLIP, Open Cushioned (2) |
| 9 | 3-5822 | COUNTERWEIGHT, Large (3) |
| 10 | 3-5823 | COUNTERWEIGHT, Small |
| 11 | 4-2589 | CHASSIS, Lower |
| 12 | 4-2590 | SUPPORT, Caster |
| 13 | 4-2591 | YOKE, Caster |
| 14 | 4-2628 | PLATE, Hitch (2) |
| 15 | 4-2629 | PIN, Hitch (2) |
| 16 | 5-4087 | ASSEMBLY, Tire & Rim (includes items 17 thru 21) |
| 17 | 3-5474 | TIRE, 13 x 5.00-6 4 Ply |
| 18 | 3-5475 | RIM |
| 19 | 2-8722 | BEARING (2) |
| 20 | 1-2234 | VALVE, Air |
| 21 | 1-2700 | FITTING, Lube |
| 22 | 1-0965 | RING, 1-3/16" External Retaining |
| 23 | 9-1299 | NUT, 3/8-16 Hex Nyloc (20) |
| 24 | 9-1325 | NUT, 1/2-13 Nyloc |
| 25 | 9-1514 | WASHER, 13/32 I.D. x 13/16 O.D., Flat (2) |
| 26 | 9-1598 | PIN, Cotter, 1/8 x 3/4" (4) |
| 27 | 9-1773 | SCREW, 1/2-13 x 7-1/4, Grade 5 |
| 28 | 9-1786 | BOLT, 3/8-16 x 4-3/4", Grade 5 (2) |
| 29 | 9-1790 | BOLT, 3/8-16 x 1-1/4", Carriage, Grade 5 (8) |
| 30 | 9-1795 | WASHER, 1-1/4 I.D. x 1-7/8 O.D. Flat |
| 31 | 9-1328 | SCREW, 3/8-16 x 1-1/4", Hex Hd. Cap, Gr. 5 (8) |
| 32 | 9-1595 | WASHER, 15/32 I.D. x 15/16" O.D., Flat (4) |
| 33 | 9-1640 | BOLT, 3/8-16 x 1" Carriage, Grade 5 (2) |
| 34 | 3-6578 | CAP, Caster Shaft |
| 35 | 9-0361 | SCREW, 5/16-18 x 5/8" Self Tapping |
| 36 | 4-2777 | SHIELD, Grass |
| 37 | 9-1299 | NUT, 3/8-16 Hex Nyloc (2) |

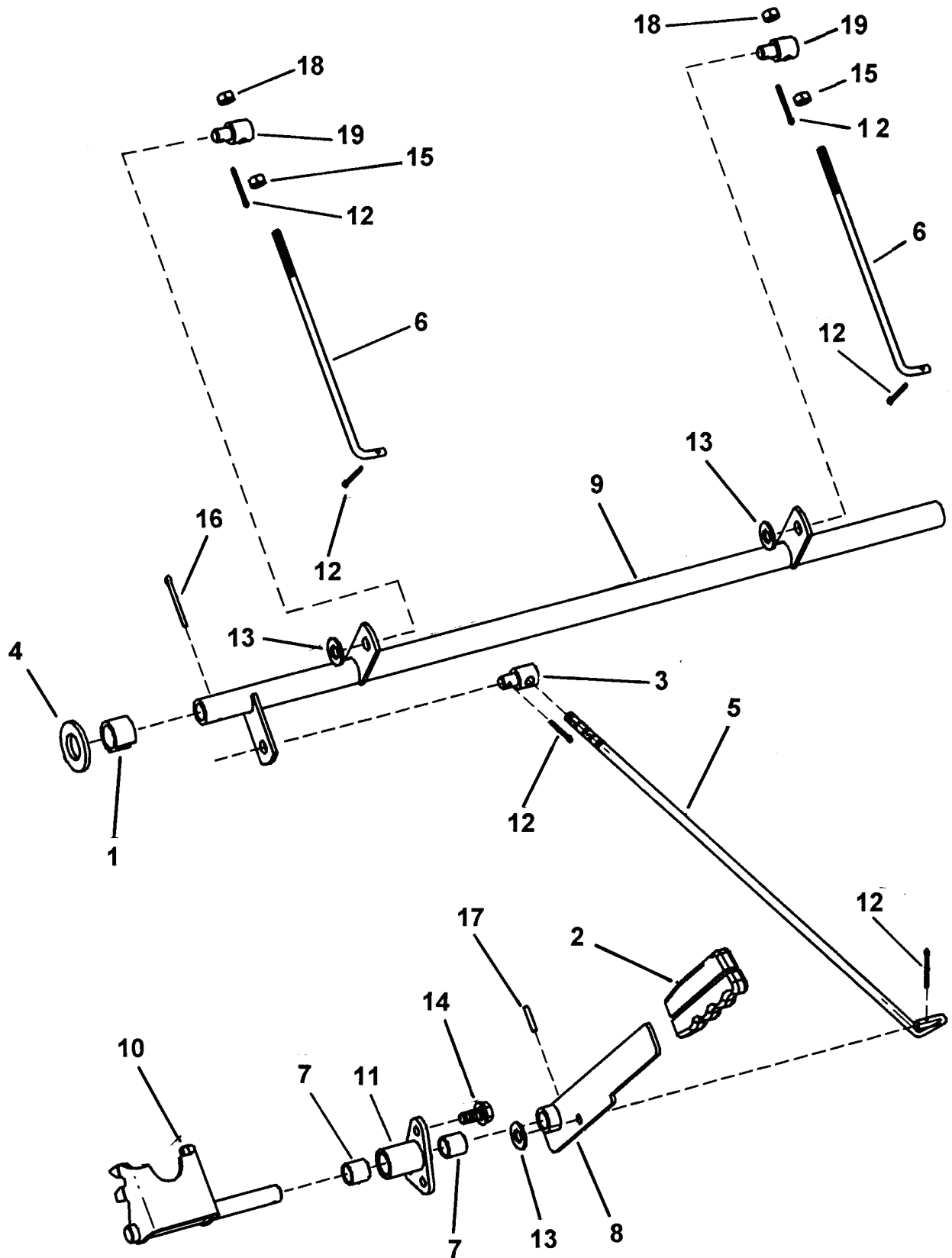
JOYSTICK CONTROL ASSEMBLY



JOYSTICK CONTROL ASSEMBLY

| ITEM | PART NO. | DESCRIPTION |
|------|----------|--|
| 1 | 1-3072 | ROLL PIN, 1/4 x 1" (8) |
| 2 | 2-3656 | HANDLE, Plastic |
| 3 | 3-5532 | BRACKET, Joystick Mounting |
| 4 | 3-5533 | BLOCK, Pivot J'Stick Control |
| 5 | 3-5897 | SHAFT, Upper Cross |
| 6 | 3-5898 | SHAFT, Lower Cross |
| 7 | 4-2599 | HANDLE, Joystick Control (Weldment) |
| 8 | 4-2638 | ARM/HUB Weldment (4) |
| 9 | 5-4237 | ASSEMBLY, Cross Shaft Support (includes one 9A and two 9B) |
| 9A | 4-2623 | SUPPORT, Cross Shaft (Weldment) |
| 9B | 1-3874 | BUSHING (2) |
| 10 | 3-5908 | ROD, Threaded 1/4-28 x 2.71 long |
| 11 | 3-5909 | ROD, Threaded 1/4-28 x 3.85 long |
| 12 | 9-0844 | ROLL PIN 3/16 x 3/4" |
| 13 | 9-1298 | NUT, 5/16-18 Hex Nyloc (3) |
| 14 | 9-1508 | BOLT, 5/16-18 x 3/4" Sq.Nk. Carriage, Grade 5 (3) |
| 15 | 9-1523 | SCREW, 5/16-18 x 5/8" Hex Washer Self-Tap (2) |
| 16 | 9-1628 | WASHER, 41/64 I.D. x 1" O.D. Flat (4) |
| 17 | 9-1800 | BOLT, 5/16-18 Shoulder (4) |
| 18 | 9-1812 | NUT, 1/4-28 Hex Nyloc (4) |
| 19 | 9-1816 | ROLL PIN, 1/4 x 2-3/4" |
| 20 | 9-1605 | NUT, 1/4-28 Hex, Grade 5 or B (4) |
| 21 | 1-5753 | BALL-JOINT (4) |

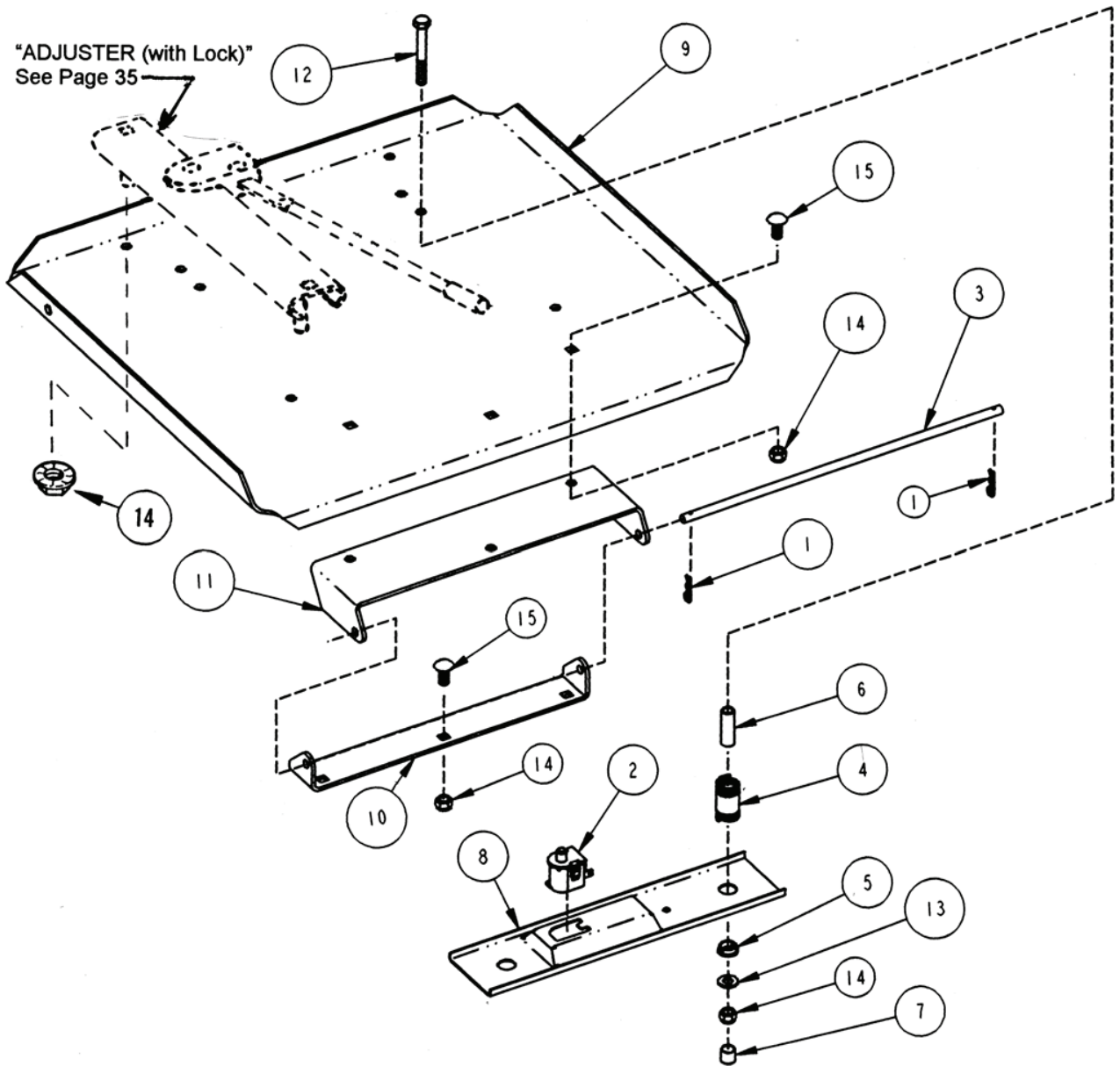
PARKING BRAKE ASSEMBLY



PARKING BRAKE ASSEMBLY

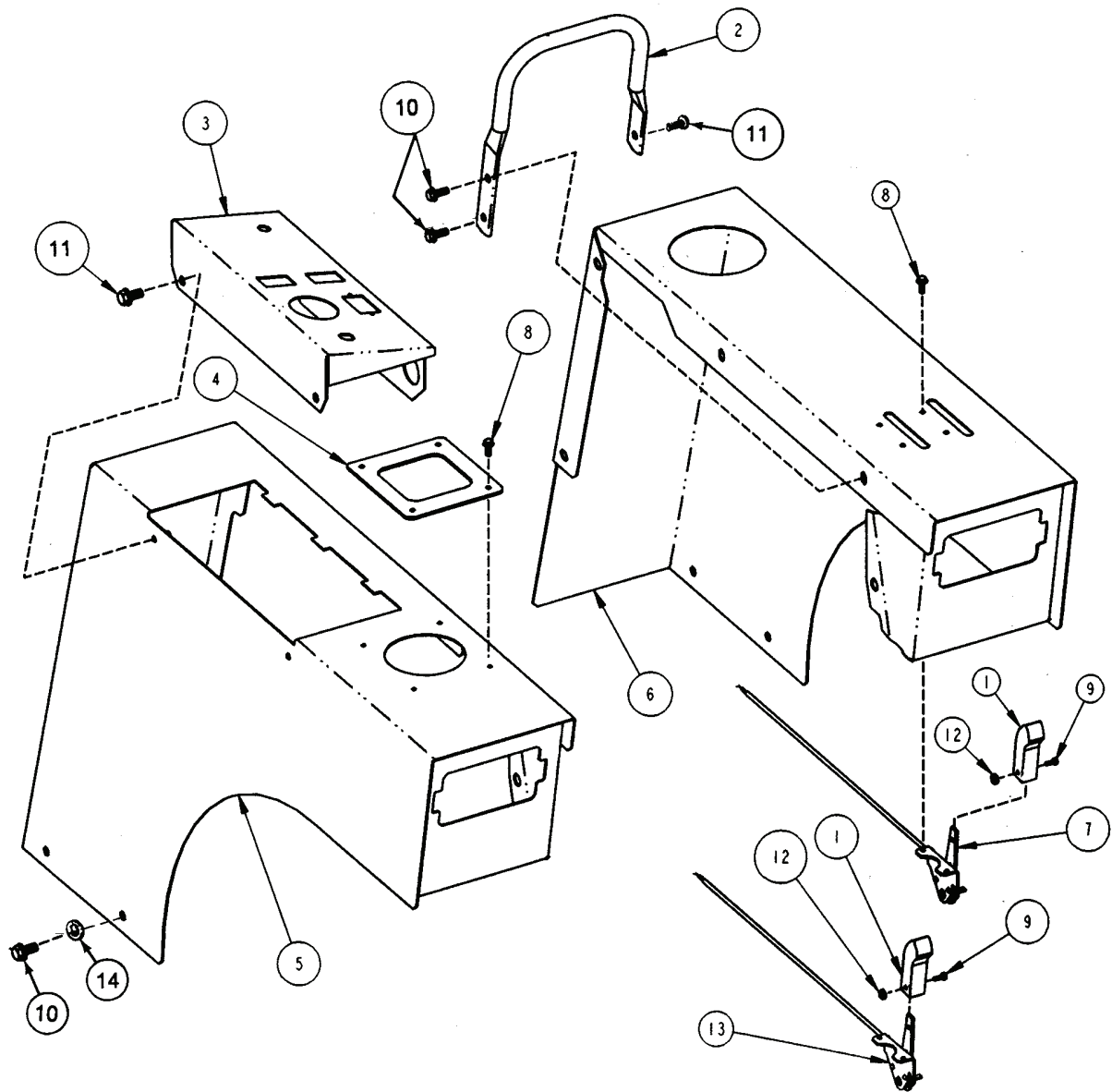
| ITEM | PART NO. | DESCRIPTION |
|------|----------|--|
| 1 | 1-2068 | RING, Rear Lift Arm |
| 2 | 2-6420 | GRIP, Flat Bar |
| 3 | 2-8200 | SWIVEL, Adjustable (5/16-18 thread) |
| -- | 4-6451 | SWIVEL, Adjustable (3/8-24 thread) |
| 4 | 3-4453 | WASHER, 3/4 I.D. x 1-1/2 O.D. x 9/64" Flat |
| 5 | 4-6456 | ARM, Brake Lift (3/8-24 thread) |
| 6 | 3-5888 | ROD, Hydrostatic Brake (1/4-28 thread) (2) |
| 7 | 3-6399 | SLEEVE Bearing, 1/2 I.D. x .629 (2) |
| 8 | 4-6469 | ARM, Parking Brake |
| 9 | 4-2635 | SHAFT, Brake |
| 10 | 4-2647 | BRACKET, Joystick Lockout |
| 11 | 4-2648 | PLATE, Support |
| 12 | 9-1313 | COTTER PIN, 3/32 x 1" (6) |
| -- | 9-1597 | COTTER-PIN, 3/32 x 3/4" (6) |
| 13 | 9-1514 | WASHER, 13/32 I.D. x 13/16 O.D. x 5/64 Flat (3) |
| 14 | 9-1523 | SCREW, 5/16-18 x 5/8" Hex Washer Face Self-Tap (3) |
| 15 | 9-1605 | NUT, 1/4-28 Hex, Grade 5 (2) |
| 16 | 9-1809 | COTTER PIN, 1/8 x 1-1/4" |
| 17 | 1-4001 | PIN, Roll 1/8 x 3/4" |
| 18 | 9-1812 | NUT, 1/4-28 Hex Nyloc (2) |
| 19 | 9-1832 | SWIVEL, 1/4" Smooth (2) |

SEAT SUPPORT ASSEMBLY



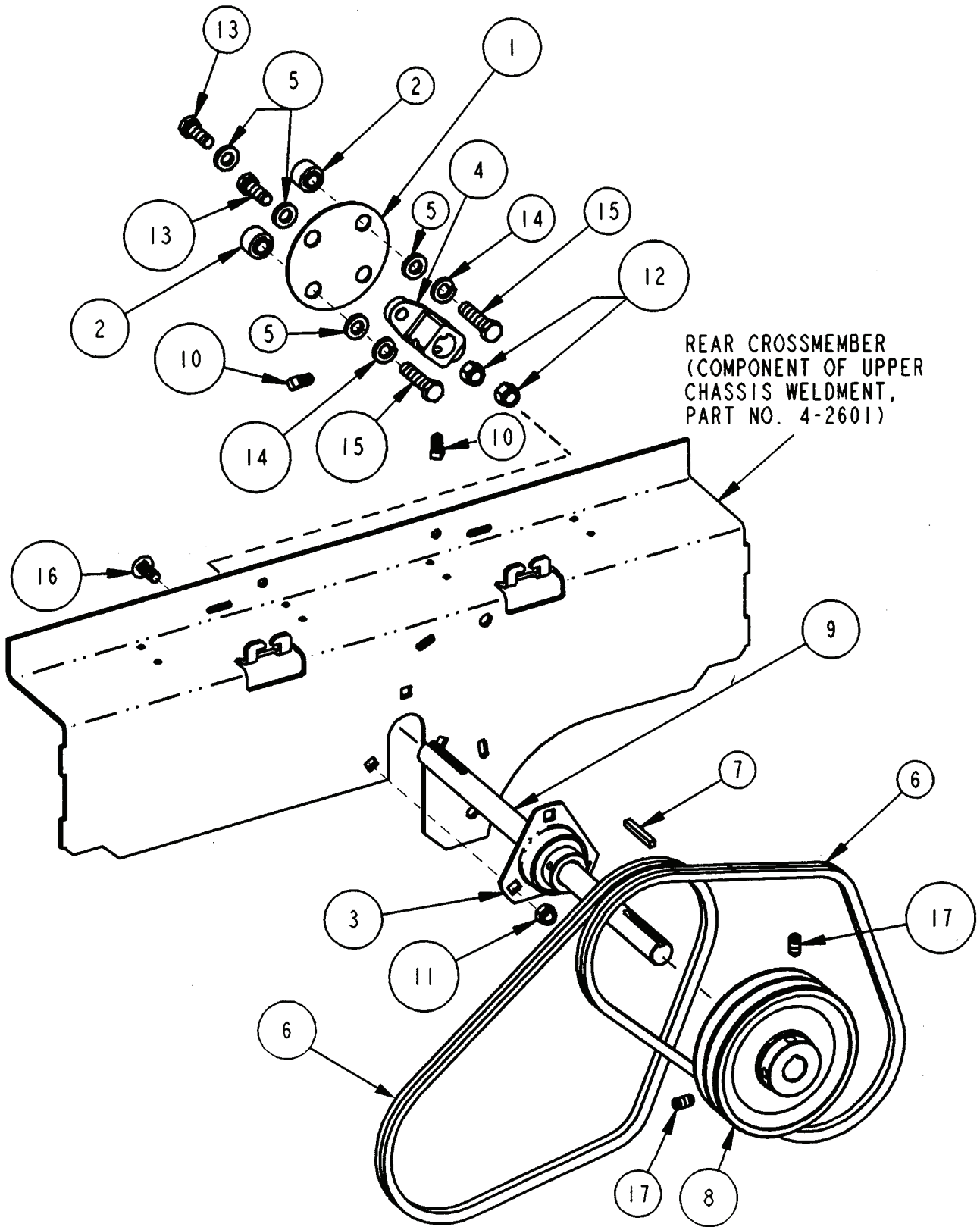
| ITEM | PART NO. | DESCRIPTION |
|------|----------|---|
| 1 | 9-1503 | HAIRPIN, 3/32 x 1-1/2 (2) |
| 2 | 1-7590 | SWITCH, Seat (Normally Open) |
| 3 | 1-9035 | ROD, 5/16 x 13" Long |
| 4 | 3-6492 | SPRING, .106 Wire Dia., .68 I.D. x 1-1/2" (2) |
| 5 | 2-2793 | BUSHING, Molded Seat, 1/2 I.D., 5/8" O.D. (2) |
| 6 | 2-2794 | SPACER, .31 I.D., 1-3/8" Long (2) |
| 7 | 2-3606 | CAP, Vinyl, 1/4 I.D., 1/5 O.D. (2) |
| 8 | 3-3362 | HOLDER, Seat Switch |
| 9 | 3-5827 | PLATE, Seat Support |
| 10 | 3-5828 | BRACKET, Lower Seat Hinge |
| 11 | 3-5839 | BRACKET, Upper Seat Support Hinge |
| 12 | 9-1046 | SCREW, 5/16-18 x 2-1/2" Hex Head Cap, Grade 5 (2) |
| 13 | 9-1296 | WASHER, 5/16 x 11/16 O.D. Flat (2) |
| 14 | 9-1298 | NUT, 5/16-18 Hex Nyloc (16) |
| 15 | 9-1508 | BOLT, 5/16-18 x 3/4 Short Neck. Carriage, Grade 5 (6) |

FENDER/CONTROL CABLE ASSEMBLY



| ITEM | PART NO. | DESCRIPTION |
|------|----------|---|
| 1 | 2-3655 | LEVER, Throttle Control (2) |
| 2 | 3-5548 | HANDLE, 5/8" Tubing |
| 3 | 3-5701 | PANEL, Console |
| 4 | 3-5940 | PLATE, Joystick Control |
| 5 | 4-2642 | FENDER, R.H. |
| 6 | 4-2643 | FENDER, L.H. |
| 7 | 3-5837 | CABLE, Choke, Kohler |
| 8 | 9-0913 | SCREW, #10-24 Hex Washer Face Self-tap (8) |
| 9 | 9-1017 | SCREW, #8-32 x 3/8" Machine (2) |
| 10 | 9-1523 | SCREW, 5/16-18 x 5/8" Hex Washer Face Self-tap (15) |
| 11 | 9-1787 | SCREW, 1/4-20 x 5/8" Hex Flange Lock (3) |
| 12 | 9-1018 | NUT, #8-32 Hex (2) |
| 13 | 3-5838 | CABLE, Throttle, Kohler |
| 14 | 9-1130 | WASHER, 5/16 I.D. Flat (2) |

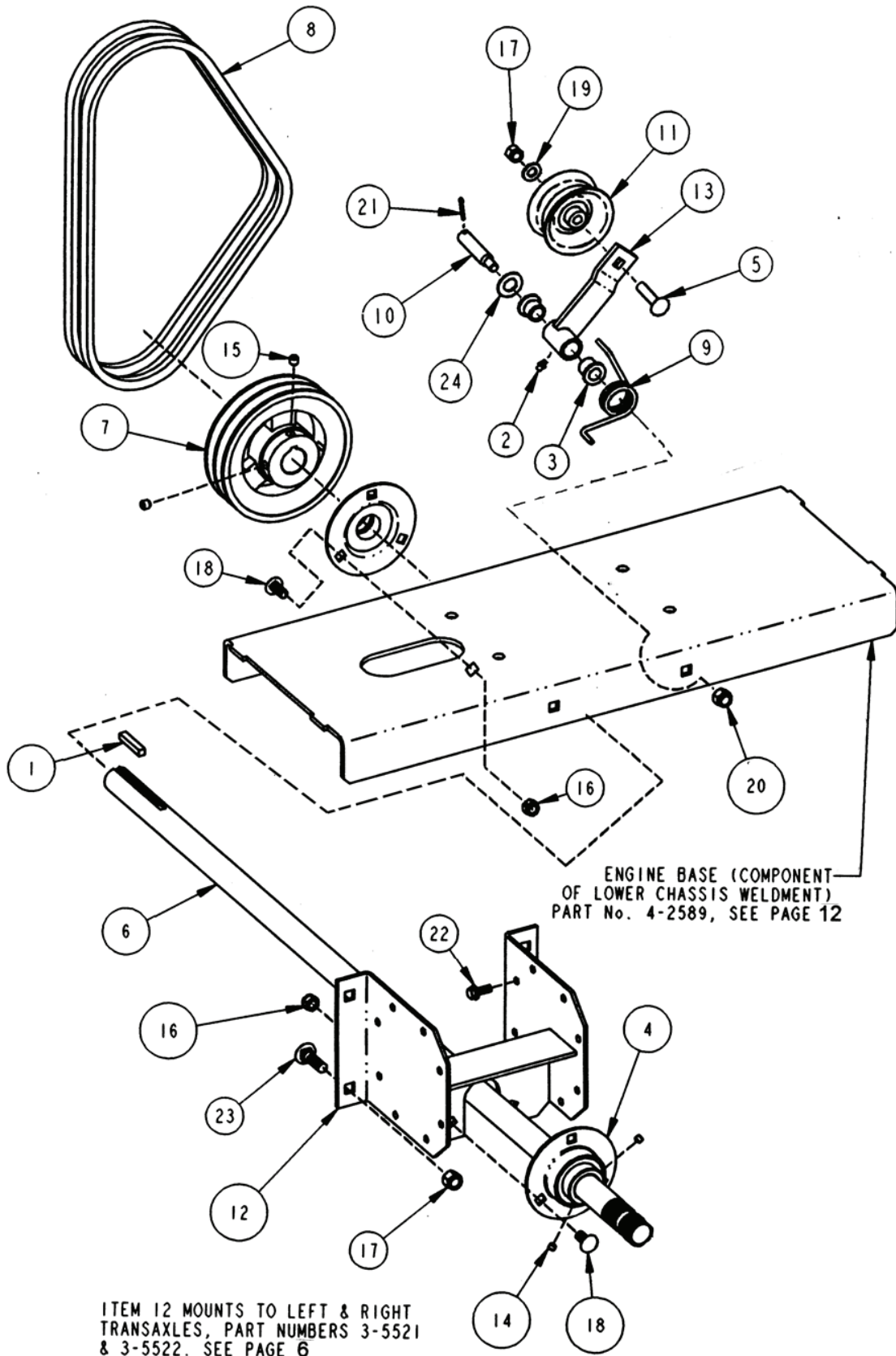
UPPER DRIVE SHAFT ASSEMBLY



UPPER DRIVE SHAFT ASSEMBLY

| ITEM | PART NO. | DESCRIPTION |
|------|----------|--|
| 1 | 1-4338 | DISC, Flexible |
| 2 | 1-4803 | SPACER, LT16 (2) |
| 3 | 1-8547 | BEARING, 3/4" (includes collar, Part No. 1-4625)) |
| -- | 1-4268 | BEARING, 3/4" (w/o collar) |
| 4 | 1-8626 | HUB, Drive Shaft Adapter |
| 5 | 3-2070 | WASHER, 13/32 I.D. x 3/4 O.D., Flat (4) |
| 6 | 3-5544 | BELT, 36-1/2" (2) |
| 7 | 9-1803 | KEY, 3/16 Square x 1-1/2" Long |
| 8 | 3-5564 | PULLEY, Cast Iron Dual V 4.95 Effective O.D. (includes two of item 17) |
| 9 | 3-5811 | DRIVE SHAFT, 3/4" |
| 10 | 9-0848 | SET SCREW, 5/16-18 x 1/2" Square Head Cup Point (2) |
| 11 | 9-1298 | NUT, 5/16-18 Hex Nyloc (3) |
| 12 | 9-1299 | NUT, 3/8-16 Hex Nyloc (2) |
| 13 | 9-1304 | SCREW, 3/8-16 x 1" Hex Head Cap, Grade 5 (2) |
| -- | 9-1328 | SCREW, 3/8-16 x 1-1/4" Hex Head Cap, Grade 5 (2) |
| 14 | 9-1320 | WASHER, 3/8 Split Lock (2) |
| 15 | 9-1497 | SCREW, 3/8-16 x 1-1/2" Hex Head Cap, Grade 5 (2) |
| 16 | 9-1508 | BOLT, 5/16-18 x 3/4", Carriage, Grade 5 (3) |
| 17 | 9-1802 | SCREW, 5/16-18 x 5/8", Socket-Head (2) |

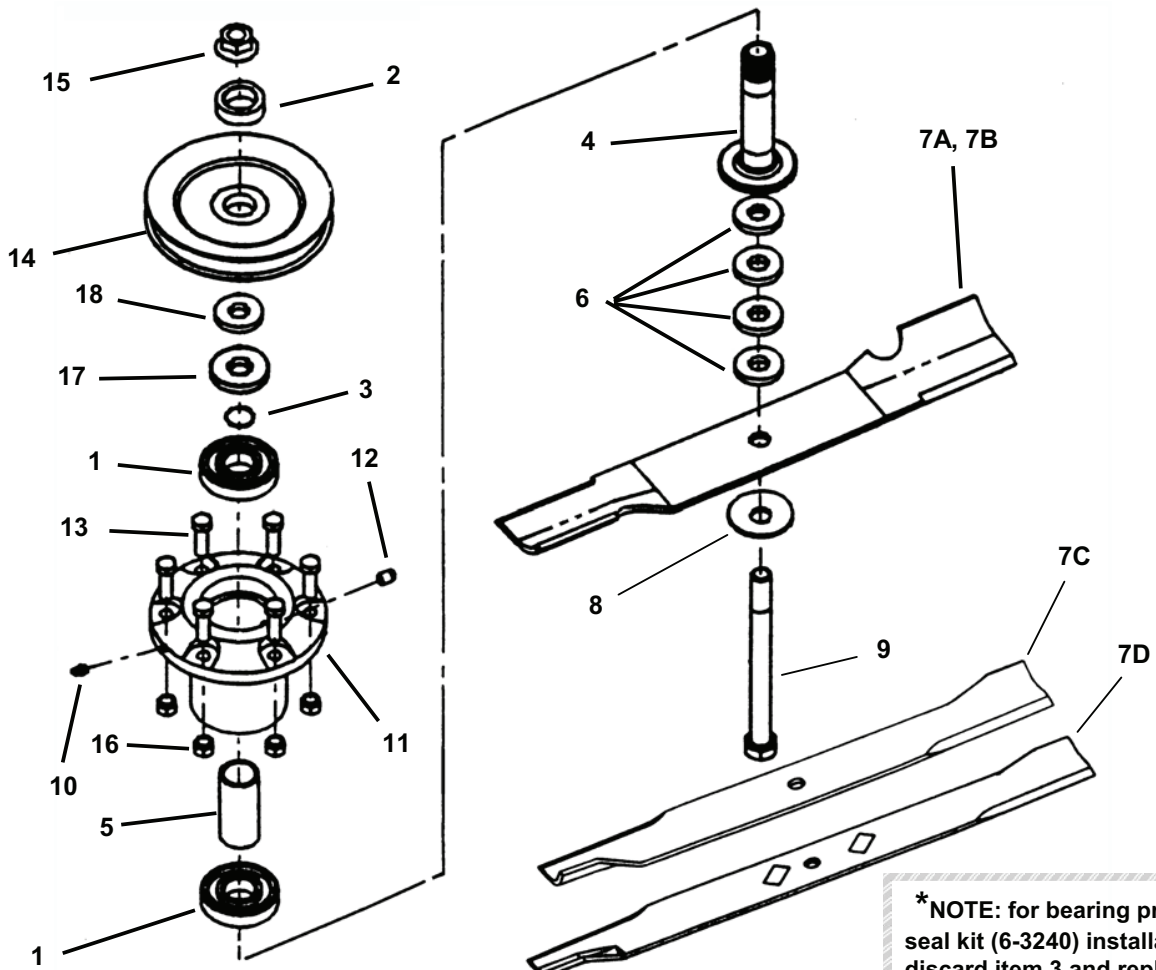
DECK DRIVESHAFT ASSEMBLY



DECK DRIVESHAFT ASSEMBLY

| ITEM | PART NO. | DESCRIPTION |
|------|----------|---|
| 1 | 1-2315 | KEY, 1/4" Square x 2" |
| 2 | 1-3864 | FITTING, Lube (straight, for 3/16" hole) |
| -- | 1-3324 | FITTING, Lube (45 degree, for 3/16" hole) |
| 3 | 1-4409 | BUSHING (2) |
| 4 | 1-8504 | BEARING, (includes item 25) (2) |
| -- | 1-4266 | BEARING, 1" Bore (w/o collar) (2) |
| 5 | 9-1810 | BOLT, 3/8-16 x 1-3/4" Carriage, Grade 5 |
| -- | 9-0990 | BOLT, 3/8-16 x 2" Carriage, Grade 2 |
| 6 | 3-5530 | DRIVE SHAFT, Deck (1" Diameter, 15 Spline) |
| 7 | 3-5531 | PULLEY, Double V (5.45 O.D., A Section) |
| 8 | 3-5543 | BELT, Deck Drive (HA 36.5) (2) |
| 9 | 3-5713 | SPRING, Tension |
| 10 | 3-5816 | PIN, 3/8-24 UNF |
| 11 | 3-5867 | FLAT IDLER, 2.75 O.D. x 1-1/4" Wide |
| 12 | 4-2610 | BEARING MOUNT (Weldment) |
| 13 | 4-2626 | IDLER ARM, Offset (Weldment) |
| -- | 4-2622 | IDLER ARM, Straight (Weldment) |
| 14 | 9-0776 | SET SCREW, 1/4-20 x 1/4" Cone Point (2) |
| 15 | 9-0954 | SET SCREW, 5/16-18 x 5/16 Type C (2) |
| 16 | 9-1298 | NUT, 5/16-18 Hex Nyloc (6) |
| 17 | 9-1299 | NUT, 3/8-16 Hex Nyloc (5) |
| 18 | 9-1508 | BOLT, 5/16-18 x 3/4, Grade 5 (6) |
| 19 | 9-1514 | WASHER, 13/32 x 13/16 Flat |
| 20 | 9-1518 | NUT, 3/8-24 Hex Nyloc |
| 21 | 9-1598 | COTTER-PIN, 1/8 x 3/4" |
| 22 | 9-1787 | SCREW, 1/4-20 x 5/8", Hex Flange Lock, Grade 5 (16) |
| 23 | 2-7181 | BOLT, 3/8-16 x 1-1/4" Carriage, Grade 5 (4) |
| 24 | 9-1804 | WASHER, 9/16 Flat |
| 25 | 1-4265 | COLLAR, Lock 1" (with 1/4" Set Screw) |

CUTTER HOUSING ASSEMBLY

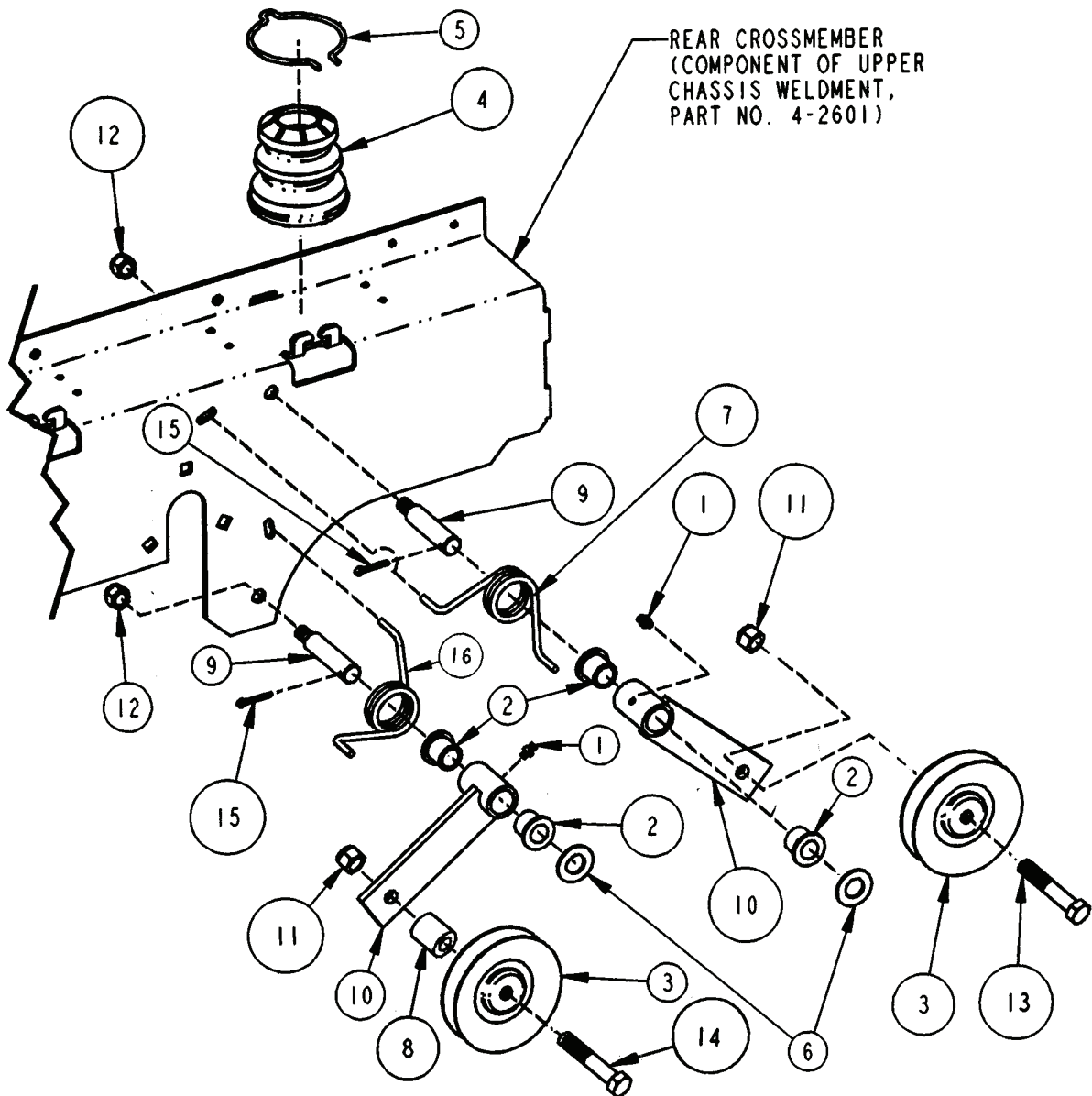


| ITEM | PART NO. | DESCRIPTION |
|------|----------|---|
| 1 | 2-9422 | BEARING, Sealed (2) |
| 2 | 2-9270 | WASHER, Spindle |
| 3 | 2-9274 | SNAP-RING, Spindle Shaft |
| 4 | 2-9253 | SHAFT, Spindle |
| 5 | 2-9254 | SPACER, Bearing |
| 6 | 2-9271 | SPACER, Blade (4) |
| 7A | 2-9251 | BLADE, 21" (61" Deck) (High Lift) |
| 7B | 2-9246 | BLADE, 18" (52" Deck) |
| 7C | 1-7081 | BLADE, 21" (61" Deck) (Low Lift) |
| 7D | 4-6625 | BLADE, 25" (73" Deck) |
| 8 | 1-6440 | WASHER, Beveled |
| 9 | 2-9256 | BOLT, 5/8-18 x 7-1/2" Hex Head Cap, Grade 5 |
| 10 | 2-9275 | FITTING, Lube |
| 11 | 2-9252 | HOUSING, Cutter |
| 12 | 2-9384 | VENT, Spindle |
| 13 | 2-9302 | BOLT, 3/8-16 x 1-1/4" Rib Necked (6) |
| 14 | 2-9249 | PULLEY, 5-3/4" O.D. (61" Deck) |
| 15 | 9-1736 | NUT, 5/8-18 Hex Flange Lock, Grade 5 |
| 16 | 9-1299 | NUT, 3/8-16 Hex Nyloc (6) |
| 17 | 6-3238* | SEAL, Nylos |
| 18 | 1-3370* | WASHER |

***NOTE:** for bearing pre-seal kit (6-3240) installation, discard item 3 and replace with items 17 and 18 as shown.

NOTE: Part Number 5-4017 (Spindle Housing sub-assembly) is comprised of items 11 and 12 (one each) as well as item 13 (six each).

TRACTION DRIVE IDLER ASSEMBLY



| ITEM | PART NO. | DESCRIPTION |
|------|----------|---|
| 1 | 1-3864 | FITTING, Lube (straight, for 3/16" hole) (2) |
| -- | 1-3324 | FITTING, Lube (45 degree, for 3/16" hole) (2) |
| 2 | 1-4409 | BUSHING, 9/16 I.D., 3/4" O.D. (4) |
| 3 | 1-8573 | PULLEY, Idler 3.48 O.D. A Section (2) |
| 4 | 1-9109 | COVER, Spring (Rubber) (2) |
| 5 | 1-9348 | CLIP, Seat Cushion (2) |
| 6 | 9-1804 | WASHER, 9/16 Flat (Type B) (4) |
| 7 | 3-5713 | SPRING, Torsion |
| 8 | 3-5812 | SPACER, 3/8 I.D. 5/8 O.D. x 5/8" Long |
| 9 | 3-5816 | PIN, 3/8-24 (2) |
| 10 | 4-2622 | IDLER ARM (Weldment) (2) |
| 11 | 9-1299 | NUT, 3/8-16 Hex Nyloc (2) |
| 12 | 9-1518 | NUT, 3/8-24 Hex Nyloc (2) |
| 13 | 9-1553 | SCREW, 3/8-16 x 1-3/4" Hex Head Cap, Grade 5 |
| 14 | 9-1560 | SCREW, 3/8-16 x 2-1/4" Hex Head Cap, Grade 5 |
| 15 | 9-1598 | COTTER PIN, 1/8 x 3/4" (2) |
| 16 | 3-6562 | SPRING, Torsion |

DECALS

WARNING TO AVOID SERIOUS INJURY OR DEATH

- READ OPERATOR'S MANUAL AND OTHER INSTRUCTIONAL MATERIALS PROVIDED.
- KNOW LOCATION AND FUNCTION OF ALL CONTROLS.
- NEVER START BLADES UNLESS PROPERLY SEATED ON MACHINE.
- KEEP SAFETY DEVICES (GUARDS, SHIELDS, AND SWITCHES) IN PLACE.
- REMOVE OBJECTS THAT COULD BE THROWN BY THE BLADES.
- DO NOT MOVE JOYSTICK RAPIDLY. AVOID SUDDEN TURNS.
- LOOK DOWN AND BEHIND BEFORE AND DURING REVERSE MOVEMENT.
- DO NOT MOW IN ANY AREA WHERE STABILITY AND TRACTION IS IN DOUBT. DO NOT MOW ON SLOPES STEEPER THAN 15°.
- REDUCE SPEED ON SLOPES. GO FORWARD DOWN SLOPES. GO REVERSE UP SLOPES. NEVER TRAVEL ACROSS SLOPES.
- AVOID UPHILL STARTS. IF MACHINE STOPS GOING UPHILL, STOP BLADES AND BACK DOWN SLOWLY.
- DO NOT MOW WHEN CHILDREN OR OTHERS ARE AROUND. NEVER CARRY CHILDREN DURING OPERATION.
- BE SURE ALL MOVING PARTS ARE STATIONERY BEFORE PLACING HANDS AND FEET NEAR BLADES OR SERVICING MACHINE.

TO START:
MAKE SURE OPERATOR IS SEATED PROPERLY.
PLACE JOYSTICK IN CENTER/NEUTRAL POSITION.
PULL UP ON BRAKE LEVER TO SET BRAKE.
PUSH BLADE SWITCH DOWN TO MAKE SURE BLADE IS DISENGAGED.
SET CHOKE AND THROTTLE.
TURN KEY TO START ENGINE.

TO OPERATE:
ADJUST CHOKE AND THROTTLE.
PULL BLADE SWITCH UP TO ENGAGE BLADE.
PUSH PARKING BRAKE LEVER DOWN TO RELEASE BRAKE.
MOVE JOYSTICK IN THE DIRECTION OF TRAVEL REQUIRED.
INCREASE/DECREASE SPEED WITH AMOUNT OF JOYSTICK TRAVEL FROM CENTER/NEUTRAL POSITION.

TO STOP:
MOVE JOYSTICK TO CENTER/NEUTRAL POSITION.
PUSH PARKING BRAKE LEVER DOWN TO ENGAGE BLADE.
PULL UP ON BRAKE LEVER TO SET BRAKE.
TURN KEY TO OFF POSITION AND REMOVE.
MAKE SURE ALL MOVEMENT HAS STOPPED BEFORE DISMOUNTING.

30
ACC./
30
CHANGE
7.5
P/O
15
START

DANGER
KEEP HANDS and FEET AWAY

CAUTION

DO NOT OPERATE MOWER WITHOUT CHUTE DEFLECTOR OR COMPLETE GRASS CATCHER ASSEMBLY IN POSITION. DO NOT REMOVE GRASS CATCHER OR RAISE CHUTE DEFLECTOR UNTIL ENGINE AND BLADE(S) HAVE STOPPED.

22522

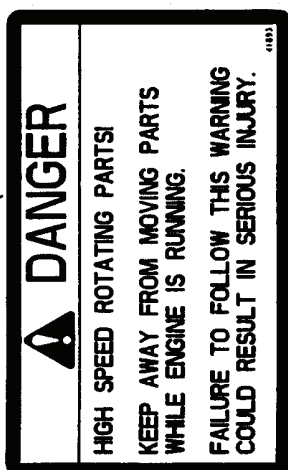
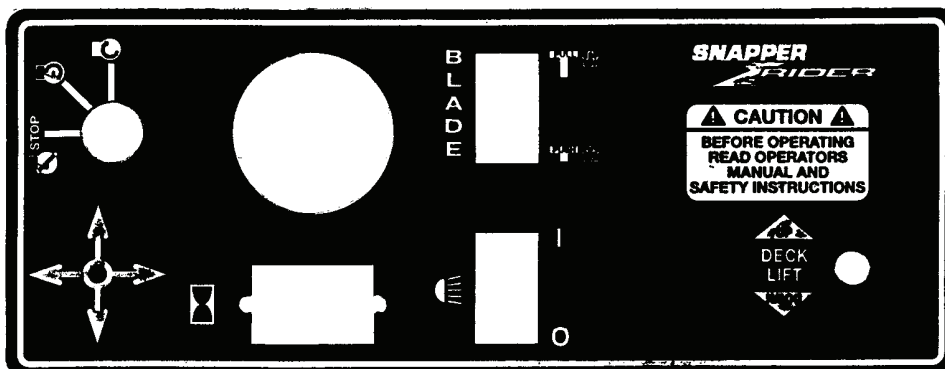
5
4
3
2

This Product may be covered by one or more of the following patents:

| | |
|-----------|-----------|
| 4,158,219 | 4,184,112 |
| 4,195,903 | 4,248,034 |
| 4,439,848 | 4,498,552 |
| 4,920,733 | 4,936,886 |
| 4,989,480 | 5,042,241 |
| 5,146,735 | 5,195,308 |
| 5,291,379 | 5,303,534 |
| 5,351,581 | 5,488,818 |
| 5,526,835 | D358,400 |

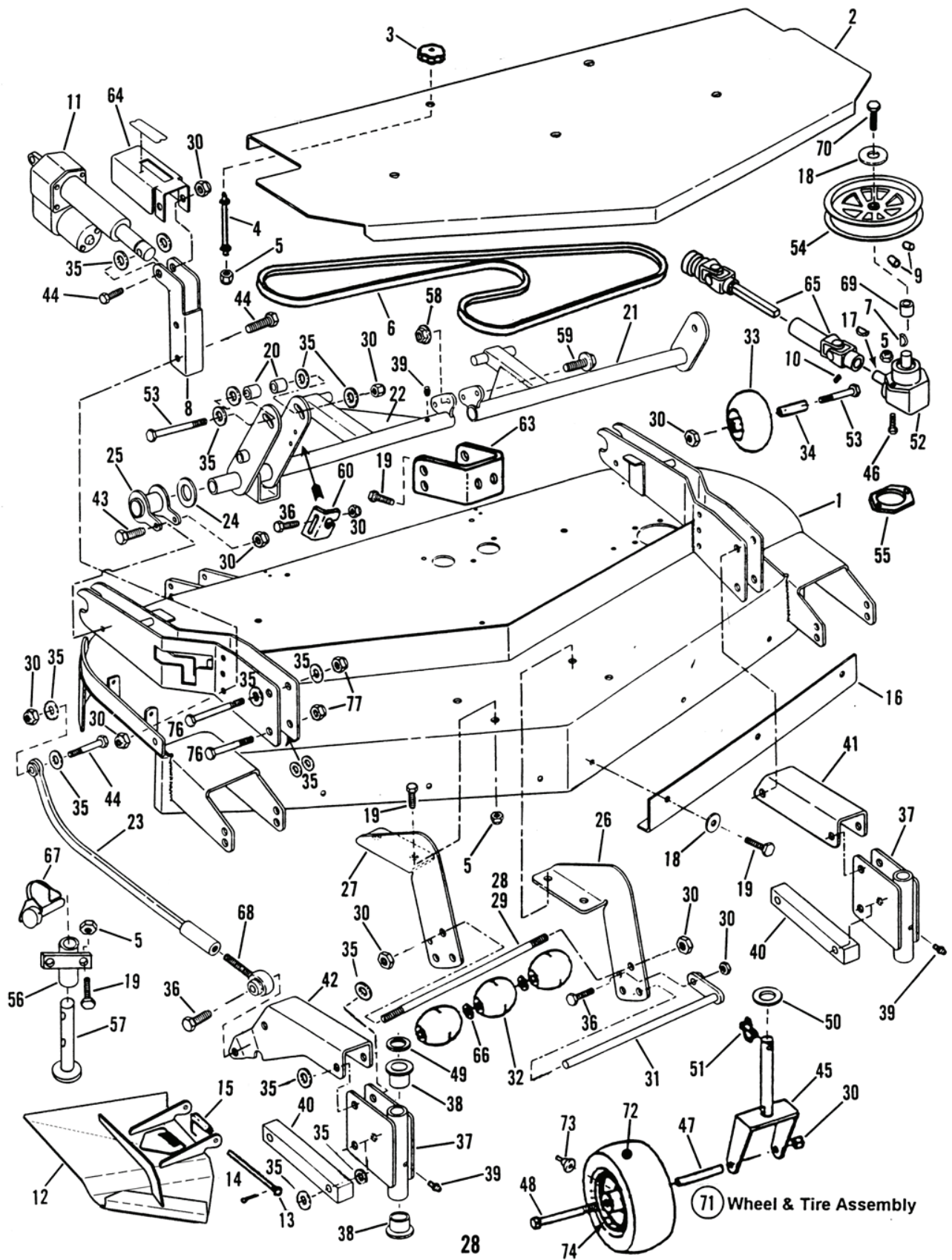
Other Patents Pending. 29476

73



| ITEM | PART NO. | DESCRIPTION |
|------|----------|----------------------------------|
| 1 | 3-5848 | LOGO, Front 16.33" Long |
| 2 | 3-5847 | LOGO, Side 24.5" Long |
| 3 | 3-5844 | DECAL, Throttle/Choke |
| 4 | 3-5846 | DECAL, Fuse |
| 5 | 1-3010 | DECAL, Warning (CPSC Cut-Finger) |
| 6 | 2-2522 | DECAL, Warning |
| 7 | 2-9470 | DECAL, Patent Numbers |
| 8 | 4-4793 | DECAL, 52" Deck (not shown) |
| -- | 4-4794 | DECAL, 61" deck (not shown) |
| -- | 4-6371 | DECAL, 73" Deck |
| 9 | 2-9295 | DECAL, Height-of-Cut |
| 10 | 3-5843 | DECAL, Control Panel |
| 11 | 1-9294 | DECAL, Nameplate Snapper |
| -- | 4-4640 | DECAL, SNAPPER |
| 12 | 4-4677 | DECAL, Name ZF2200K |
| 13 | 4-1983 | DECAL, Danger (Rotating Parts) |
| 14 | 4-5107 | DECAL, Parking Brake |
| 15 | 2-4156 | DECAL, Caution |

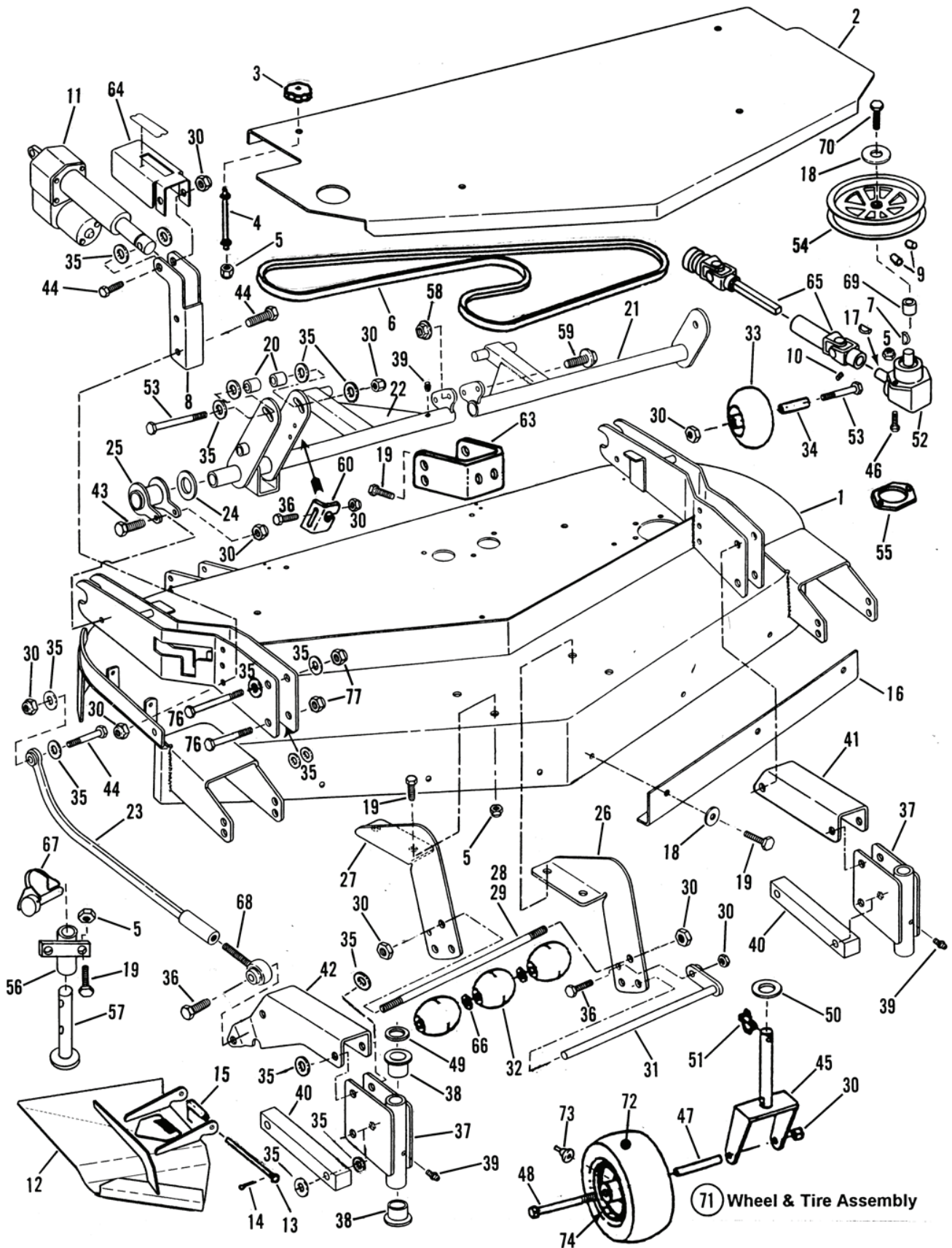
52" MOWER DECK ASSEMBLY



52" MOWER DECK ASSEMBLY

| ITEM | PART NO. | DESCRIPTION | ITEM | PART NO. | DESCRIPTION |
|------|----------|--|------|----------|--|
| 1 | 4-2898 | WELDMENT, 52" Deck-Adjustable Height | 39 | 7-6998 | FITTING, Lube 1/4-28 Straight (3) |
| 2 | 4-6728 | COVER, 52" Deck | 40 | 3-6444 | ARM, Lower Caster (2) |
| 3 | 2-3735 | KNOB (5) | 41 | 4-2655 | ARM, Caster Support L.H. |
| 4 | 2-9303 | STANDOFF, 3-1/2" (5) | 42 | 4-2653 | ARM, Caster Support R.H. |
| 5 | 9-1299 | NUT, 3/8-16 Hex Nyloc (23) | 43 | 2-9355 | BOLT, 1/2-13 x 3-3/4", Hex Head, Grade 5 (6) |
| 6 | 4-2776 | V-Belt, 52"(122") HB | 44 | 9-1821 | BOLT, 1/2-13 x 3" Hex Head (3) |
| 7 | 1-0008 | KEY, #6 Woodruff | 45 | 4-2780 | WELDMENT, Caster |
| 8 | 3-6447 | MOUNT, Motor (Front) | 46 | 9-1328 | SCREW, 3/8-16 x 1-1/4" Hex Head Cap, Grade 5 |
| 9 | 9-1802 | SCREW, 5/16-18 x 5/8" Set, Yellow Zinc (2) | 47 | 2-2151 | SLEEVE, Axle |
| 10 | 9-0132 | SET SCREW, 3/8-16x3/8" (2) | 48 | 9-1326 | SCREW, 1/2-13 x 5-1/2", Hex Head Cap, Grade 5(2) |
| 11 | 3-6448 | SCREWJACK, Warner Electric 1000 lbs. | 49 | 2-1960 | SPACER, PM |
| 12 | 4-2903 | DEFLECTOR, Chute 52" (Weldment) | 50 | 2-3747 | BUSHING, Machine |
| 13 | 2-9277 | PIN, Chute Hinge | 51 | 1-7711 | PIN, 7/16" HD Lynch |
| 14 | 9-1313 | PIN, 3/32 x 1" Cotter | 52 | 3-6451 | GEARBOX, Right Angle |
| 15 | 2-7950 | SPRING, Chute | 53 | 9-1822 | BOLT, 1/2-13 x 5" Hex Head Cap, Grade 5 (5) |
| 16 | 4-2914 | BAFFLE, Front (2) | 54 | 4-2867 | PULLEY, Cast 5-3/4" O.D. |
| 17 | 1-0211 | KEY, #9 Woodruff | 55 | 3-6455 | SHIM, Gearbox |
| 18 | 9-1331 | WASHER, 13/32 x 1-1/2" Flat (8) | 56 | 4-2657 | TUBE, Jack stand (Weldment) |
| 19 | 9-1304 | SCREW, 3/8-16 x 1", Hex Head Cap, Grade 5 (21) | 57 | 4-2658 | WELDMENT, Jack Stand |
| 20 | 3-6453 | SPACER, Motor, Rear (2) | 58 | 9-1544 | NUT, 1/2-13 Hex Flange Lock, Grade 5 (2) |
| 21 | 4-2901 | LINK, Weldment L.H. | 59 | 9-1323 | BOLT, 1/2-13 x 1-1/4" Hex Flange Lock, Grade 5 (2) |
| 22 | 4-2900 | LINK, Weldment R.H. | 60 | 3-6450 | BRACKET, Strain Relief |
| 23 | 4-2659 | LINK, Height of Cut (2) | 61 | 3-5779 | RELIEF, Strain (see page 32) |
| 24 | 3-6452 | SPACER, Tube (2) | 62 | 4-2834 | HARNESS, Deck Lift |
| 25 | 4-2660 | HOLDER, Pivot (2) | 63 | 3-6457 | BRACKET, Gage Wheel (2) |
| 26 | 3-6459 | MOUNT, Roller L.H. | 64 | 3-6454 | INDICATOR, Height-of-Cut |
| 27 | 3-6458 | MOUNT, Roller R.H. | 65 | 5-4104 | ASSEMBLY, Telescoping Drive shaft |
| 28 | 3-6460 | TUBE, Roller | 66 | 2-7344 | WASHER, 5/8" Flat (2) |
| 29 | 3-6461 | PIN, Roller | 67 | 9-1824 | PIN, 5-16 Lynch |
| 30 | 9-1325 | NUT, 1/2-13 Hex Nyloc(13) | 68 | 3-6465 | BALLJOINT, 1/2-20 (2) |
| 31 | 2-7327 | ASSEMBLY, Shaft | 69 | 3-5668 | SPACER |
| 32 | 7-9226 | ROLLER, Low Density Polyethylene (3) | 70 | 9-0160 | SCREW, 3/8-24 x 1", Gr. 5 |
| 33 | 2-9264 | WHEEL, Gage (4) | 71 | 2-9869 | ASSEMBLY, Wheel/Tire |
| 34 | 3-6456 | SPACER, Gage Wheel (4) | 72 | 2-9870 | TIRE, 9" x 3.50" -4 Ply |
| 35 | 9-1587 | WASHER, 1/2" Flat (26) | 73 | | VALVE, Air (Snap-In) |
| 36 | 9-1884 | SCREW, 1/2-13 x 1-1/2" Hex Head Cap, Gr. 2 (4) | 74 | 2-9871 | RIM |
| 37 | 4-2652 | TUBE, Caster (Weldment) (2) | 75 | 2-6107 | GREASE, Multi-Purpose |
| 38 | 2-3556 | BUSHING, Caster (4) | 76 | 9-0993 | SCREW, 1/2-20x 4-1/2" (4) |
| | | | 77 | 9-0393 | NUT, 1/2-20 Hex Nyloc (4) |

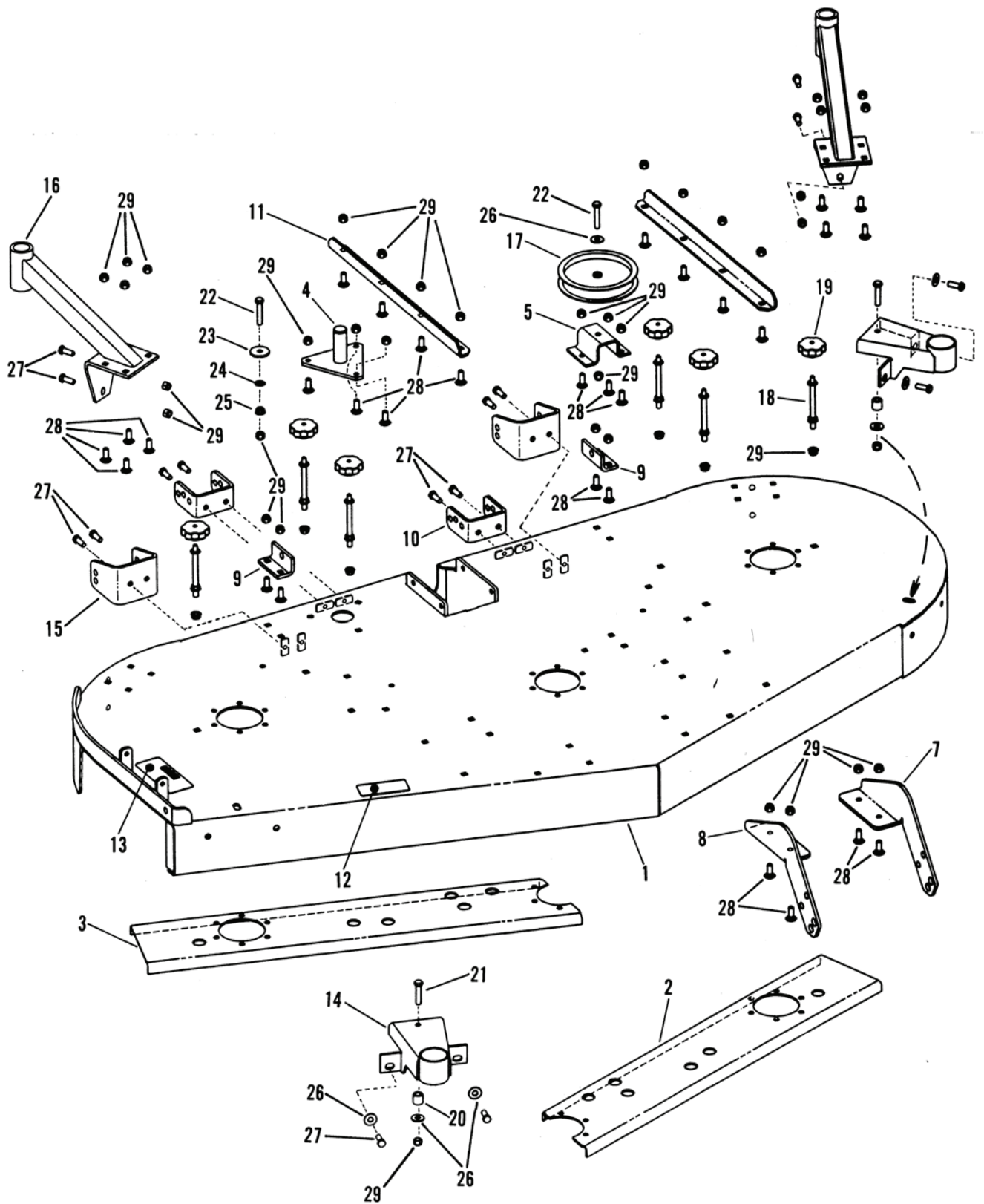
61" MOWER DECK ASSEMBLY



61" MOWER DECK ASSEMBLY

| ITEM | PART NO. | DESCRIPTION | ITEM | PART NO. | DESCRIPTION |
|------|----------|--|------|----------|--|
| 1 | 4-2651 | WELDMENT, 61" Deck-Adjustable Height | 39 | 7-6998 | FITTING, Lube 1/4-28 Straight (3) |
| 2 | 4-6729 | COVER, 61" Deck | 40 | 3-6444 | ARM, Lower Caster (2) |
| 3 | 2-3735 | KNOB (4) | 41 | 4-2655 | ARM, Caster Support L.H. |
| 4 | 2-9303 | STANDOFF, 3-1/2" (4) | 42 | 4-2653 | ARM, Caster Support R.H. |
| 5 | 9-1299 | NUT, 3/8-16 Hex Nyloc (14) | 43 | 2-9355 | BOLT, 1/2-13 x 3-3/4", Hex Head, Grade 5 (6) |
| 6 | 3-5542 | V-Belt, 61"(134.5") HB | 44 | 9-1821 | BOLT, 1/2-13 x 3" Hex Head (3) |
| 7 | 9-1823 | KEY, 5/32 x 5/8 Woodruff | 45 | 4-2780 | WELDMENT, Caster (2) |
| 8 | 3-6447 | MOUNT, Motor (Front) | 46 | 9-1328 | SCREW, 3/8-16 x 1-1/4" Hex Head Cap, Grade 5 (2) |
| 9 | 9-1802 | SCREW, 5/16-18 x 5/8" Set Yellow Zinc (2) | 47 | 2-2151 | SLEEVE, Axle (2) |
| 10 | 9-0132 | SET SCREW, 3/8-16 x 3/8" (2) | 48 | 9-1326 | SCREW, 1/2-13 x 5-1/2", Hex Head Cap, Grade 5 (2) |
| 11 | 3-6448 | SCREWJACK, Warner Electric 1000 lbs. | 49 | 2-1960 | SPACER, PM (2) |
| 12 | 4-2656 | DEFLECTOR, Chute 61" (Weldment) | 50 | 2-3747 | BUSHING, Machine (2) |
| 13 | 2-9277 | PIN, Chute Hinge | 51 | 1-7711 | PIN, 7/16" HD Lynch (2) |
| 14 | 9-1313 | PIN, 3/32 x 1" Cotter | 52 | 3-6451 | GEARBOX, Right Angle |
| 15 | 2-7950 | SPRING, Chute | 53 | 9-1822 | BOLT, 1/2-13 x 5" Hex Head Cap, Grade 5 (5) |
| 16 | 3-6445 | BAFFLE, Front (2) | 54 | 3-5788 | PULLEY, Cast 5.45 O.D. |
| 17 | 1-0211 | KEY, #9 Woodruff | 55 | 3-6455 | SHIM, Gearbox |
| 18 | 9-1331 | WASHER, 13/32 x 1-1/2" Flat (7) | 56 | 4-2657 | TUBE, Jack stand (Weldment) (2) |
| 19 | 9-1304 | SCREW, 3/8-16 x 1", Hex Head Cap, Grade 5 (18) | 57 | 4-2658 | WELDMENT, Jack stand (2) |
| 20 | 3-6453 | SPACER, Motor, Rear (2) | 58 | 9-1544 | NUT, 1/2-13 Hex Flange Lock, Grade 5 (2) |
| 21 | 4-2662 | LINK, Weldment L.H. | 59 | 9-1323 | BOLT, 1/2-13 x 1-1/4" Hex Flange Lock, Grade 5 (2) |
| 22 | 4-2661 | LINK, Weldment R.H. | 60 | 3-6450 | BRACKET, Strain Relief |
| 23 | 4-2659 | LINK, Height of Cut (2) | 61 | 3-5779 | RELIEF, Strain (see pg. 34) |
| 24 | 3-6452 | SPACER, Tube (2) | 62 | 4-2834 | HARNESS, Deck Lift (see pg. 34) |
| 25 | 4-2660 | HOLDER, Pivot (2) | 63 | 3-6457 | BRACKET, Gage Wheel (2) |
| 26 | 3-6459 | MOUNT, Roller L.H. | 64 | 3-6454 | INDICATOR, Height-of-Cut |
| 27 | 3-6458 | MOUNT, Roller R.H. | 65 | 5-4104 | ASSEMBLY, Telescoping Drive shaft |
| 28 | 3-6460 | TUBE, Roller | 66 | 2-7344 | WASHER, 5/8" Flat (2) |
| 29 | 3-6461 | PIN, Roller | 67 | 9-1824 | PIN, 5-16 Lynch (2) |
| 30 | 9-1325 | NUT, 1/2-13 Hex Nyloc (20) | 68 | 3-6465 | BALLJOINT, 1/2-20 (2) |
| 31 | 2-7327 | ASSEMBLY, Shaft | 69 | 3-5668 | SPACER |
| 32 | 7-9226 | ROLLER, Low Density Polyethylene (3) | 70 | 9-0160 | SCREW, 3/8-24 x 1", Gr. 5 |
| 33 | 2-9264 | WHEEL, Gage (4) | 71 | 2-9869 | ASSEMBLY, Wheel/Tire (2) |
| 34 | 3-6456 | SPACER, Gage Wheel (4) | 72 | 2-9870 | TIRE, 9" x 3.50" -4 Ply |
| 35 | 9-1587 | WASHER, 1/2" Flat (26) | 73 | | VALVE, Air (Snap-In) |
| 36 | 9-1884 | SCREW, 1/2-13 x 1-1/2" Hex Head Cap, Gr. 2 (4) | 74 | 2-9871 | RIM |
| 37 | 4-2652 | TUBE, Caster (Weldment) (2) | 75 | 2-6107 | GREASE, Multi-Purpose |
| 38 | 2-3556 | BUSHING, Caster (4) | 76 | 9-0993 | SCREW, 1/2-20 x 4-1/2" (4) |
| | | | 77 | 9-0393 | NUT, 1/2-20 Hex Nyloc (4) |

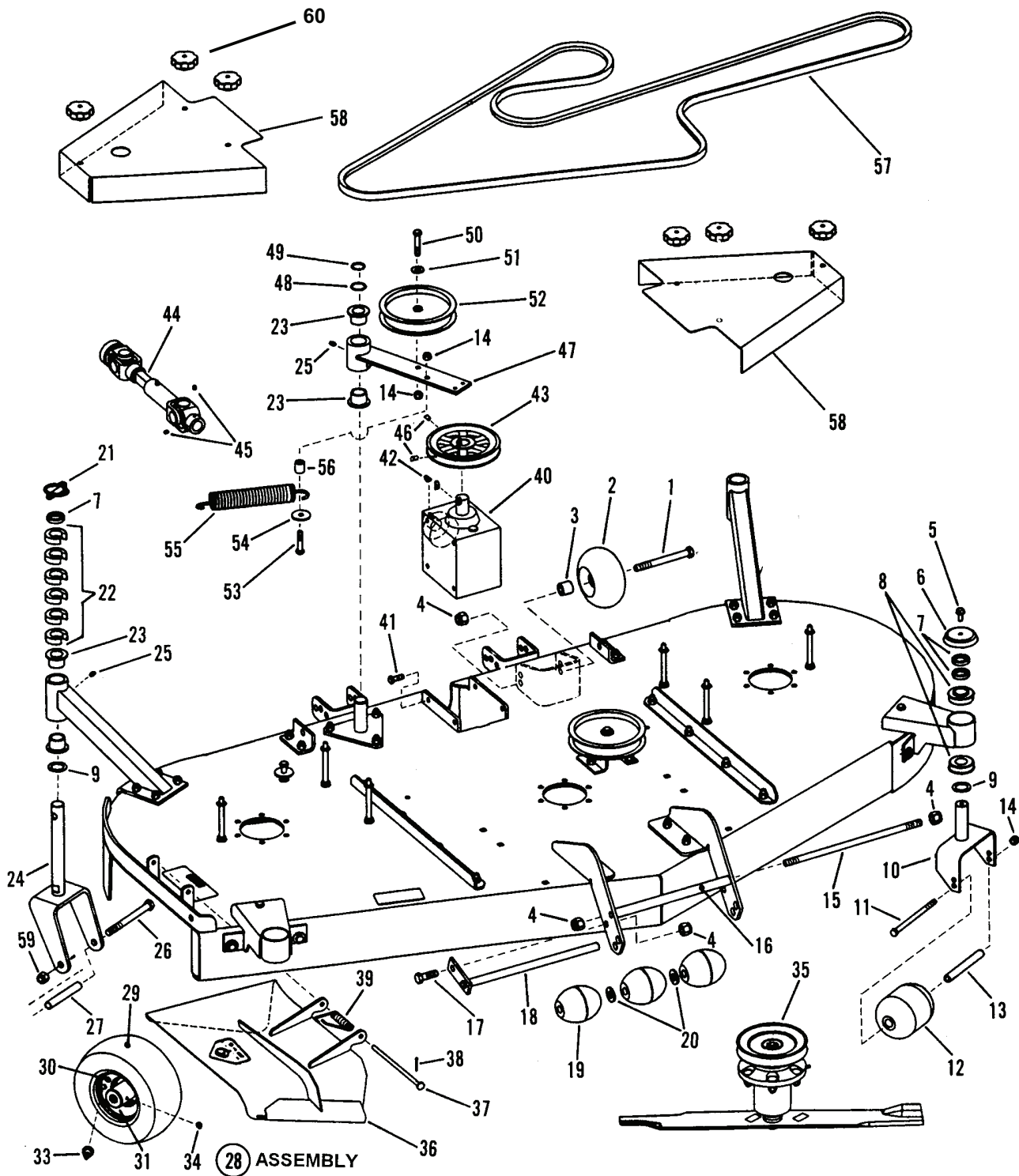
73" MOWER DECK SUB-ASSEMBLY



73" MOWER DECK SUB-ASSEMBLY

| ITEM | PART NO. | DESCRIPTION |
|------|----------|--|
| 1 | 4-1839 | WELDMENT, 73" Deck |
| 2 | 4-6250 | CHANNEL, L.H. Deck Stiffener |
| 3 | 4-6251 | CHANNEL, R.H. Deck Stiffener |
| 4 | 4-1295 | WELDMENT, Idler Pivot |
| 5 | 3-6449 | STAND, Fixed Idler |
| 6 | 3-5789 | PULLEY, Idler 5-1/2" O.D. |
| 7 | 3-6459 | ROLLER MOUNT, Left Hand |
| 8 | 3-6458 | ROLLER MOUNT, Right Hand |
| 9 | 4-3824 | HANGER BRACKET, Rear Deck Lift (2) |
| 10 | 4-6623 | BRACKET, Rear Deck Hanger (2) |
| 11 | 4-6509 | STIFFENER, Deck (2) |
| 12 | 4-6371 | DECAL, 73" Deck |
| 13 | 2-2522 | DECAL, Warning |
| 14 | 4-1821 | WELDMENT, Gage Wheel (2) |
| 15 | 3-6457 | BRACKET, Gage Wheel (2) |
| 16 | 4-6515 | WELDMENT, Caster Support (2) |
| 17 | 3-5789 | PULLEY, Idler 5-1/2" O.D. |
| 18 | 2-9303 | STANDOFF, 3-1/2" (6) |
| 19 | 2-3735 | KNOB, 5/16-18 (6) |
| 20 | 4-4752 | SPACER (2) |
| 21 | 9-1553 | SCREW, 3/8-16 x 1-3/4" Hex Head Cap, Grade 5 (2) |
| 22 | 9-1305 | SCREW, 3/8-16 x 2" Hex Head Cap, Grade 5 (2) |
| 23 | 9-1331 | WASHER, .406 I. D. x 1-1/2" O.D. Flat |
| 24 | 1-3847 | RETAINER, 3/8" Bolt |
| 25 | 9-1619 | NUT, 3/8-16 Hex Flange Lock |
| 26 | 9-1300 | WASHER, .44 I.D. x 1" O.D. (7) |
| 27 | 9-1304 | SCREW, 3/8-16 x 1" Hex Head Cap, Grade 5 (16) |
| 28 | 9-1640 | BOLT, 3/8-16 x 1" square Neck Carriage, Grade 5 (30) |
| 29 | 9-1299 | NUT, 3/8-16 Hex Nyloc (44) |

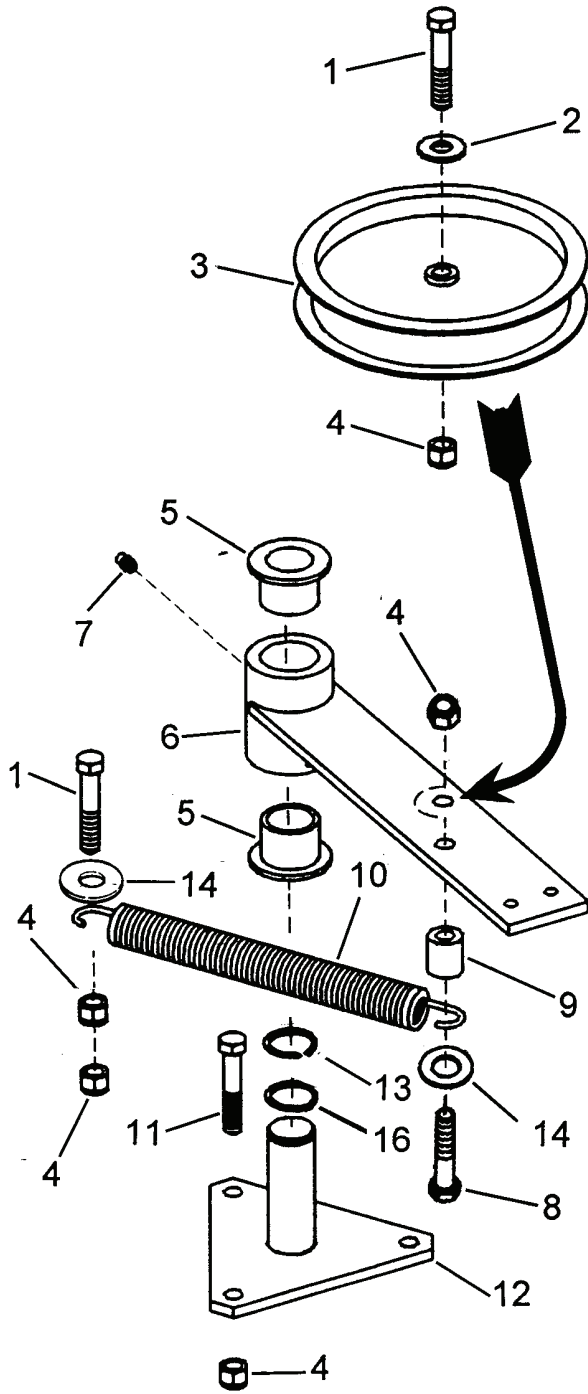
73" MOWER DECK ASSEMBLY



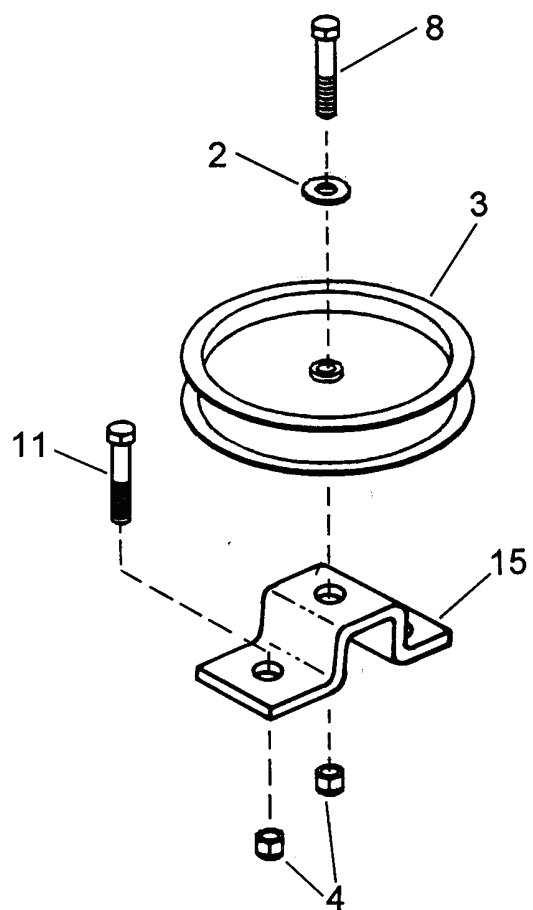
73" MOWER DECK ASSEMBLY

| ITEM | PART NO. | DESCRIPTION |
|------|----------|--|
| 1 | 9-1822 | SCREW, 1/2-13 x 5" Hex Head Cap (2) |
| 2 | 2-9264 | GAGE WHEEL (2) |
| 3 | 3-6456 | SPACER, Gage Wheel (2) |
| 4 | 9-1325 | NUT, 1/2-13 Hex Nyloc (5) |
| 5 | 9-1541 | SCREW, 5/16-18 x 3/4" Hex Washer Self-Tap (2) |
| 6 | 4-4839 | CAP, Caster Shaft (2) |
| 7 | 2-1960 | SPACER (6) |
| 8 | 4-4892 | BEARING, Flanged Radial 1 x 2 x 23/32" Double Seal (4) |
| 9 | 2-3747 | BUSHING, Machine 1" I.D. (4) |
| 10 | 4-4646 | WELDMENT, Gauge Wheel Caster (2) |
| 11 | 9-1617 | SCREW, 3/8-16 x 6" Hex Head Cap (2) |
| 12 | 7-9868 | ROLLER, 3-3/4 x 4-13/16" Nylon (2) |
| 13 | 7-9882 | TUBE, Axle (2) |
| 14 | 9-1299 | NUT, 3/8-16 Hex Nyloc (6) |
| 15 | 3-6461 | ROD, Threaded Roller |
| 16 | 3-6460 | TUBE, Roller |
| 17 | 9-1884 | SCREW, 1/2-13 x 1-1/2" Hex Head Cap |
| 18 | 2-7327 | WELDMENT, Pivot Pin |
| 19 | 7-9226 | ROLLER, Low Density Polyethylene (3) |
| 20 | 2-7344 | WASHER, 5/8" SAE Flat (2) |
| 21 | 1-7711 | PIN, 7/16" Linch (2) |
| 22 | 1-9152 | SPACER, Caster (12) |
| 23 | 2-3556 | BUSHING, Caster (6) |
| 24 | 4-6523 | WELDMENT, Caster Yoke (2) |
| 25 | 7-6998 | FITTING, 1/4-28, Straight, Grease (3) |
| 26 | 9-1326 | SCREW, 1/2-13 x 5-1/2" Hex Head Cap, Grade 5 (2) |
| 27 | 2-2151 | SLEEVE, Axle (2) |
| 28 | 2-9869 | ASSEMBLY, Wheel/Tire (2) (includes items 29-34) |
| 29 | 2-9870 | TIRE, 9 x 3.50-4, 4 Ply Smooth |
| 30 | 2-9871 | RIM, One Piece Steel, White |
| 31 | 2-2394 | BEARING, Flanged (2) |
| 32 | 2-2395 | BEARING, Roller (not shown) |
| 33 | 1-2234 | VALVE, Air |
| 34 | 4-6430 | FITTING, 1/4-28, 45 Degree, Grease |
| 35 | 5-7779 | GROUP, Spindle (3) (see page 24 for parts breakdown) |
| 36 | 4-7139 | WELDMENT, Chute Deflector |
| 37 | 2-9277 | HINGE PIN, Chute |
| 38 | 9-1313 | PIN, 3/32 x 1" Cotter |
| 39 | 2-7950 | SPRING, Chute |
| 40 | 4-6624 | GEARBOX, Right Angle 1.5:1 |
| 41 | 9-1304 | SCREW, 3/8-16 x 1" Hex Head Cap, Grade 5 (4) |
| 42 | 1-3857 | KEY, 1/4 x 7/8" Woodruff (2) |
| 43 | 4-6889 | PULLEY, Cast 5.95 O.D. |
| 44 | 5-7863 | DRIVESHAFT, Telescoping |
| 45 | 9-0132 | SCREW, 3/8-16 x 3/8" Set (2) |
| 46 | 9-1802 | SCREW, 5/16-18 x 5/8" Socket Head Set (2) |
| 47 | 4-2619 | WELDMENT, Idler Arm |
| 48 | 3-2031 | WASHER, 1-1/32 I.D. x 1-1/4" O.D. Flat |
| 49 | 1-2709 | E-RING, 1" |
| 50 | 9-1305 | SCREW, 3/8-16 x 2" Hex Head Cap, Grade 5 |
| 51 | 9-1300 | WASHER, 3/8" Flat |
| 52 | 3-5789 | PULLEY, 5-1/2" O.D. Idler |
| 53 | 9-1553 | SCREW, 3/8-16 x 1-3/4" Hex Head Cap, Grade 5 |
| 54 | 9-1331 | WASHER, 13/32 I.D. x 1-1/2" O.D. Flat |
| 55 | 3-5667 | SPRING, Extension |
| 56 | 3-5858 | SPACER, 1/2 I.D. x 3/4" O.D. x .83 |
| 57 | 4-6891 | BELT, 152" HB Section |
| 58 | 4-6644 | GUARD, Pulley (2) |
| 59 | 9-1922 | NUT, 1/2-13 Hex Light Nyloc (2) |
| 60 | 2-3735 | KNOB (6) |

52" & 61" DECK IDLER ASSEMBLIES



SPRING LOADED IDLER ASSEMBLY

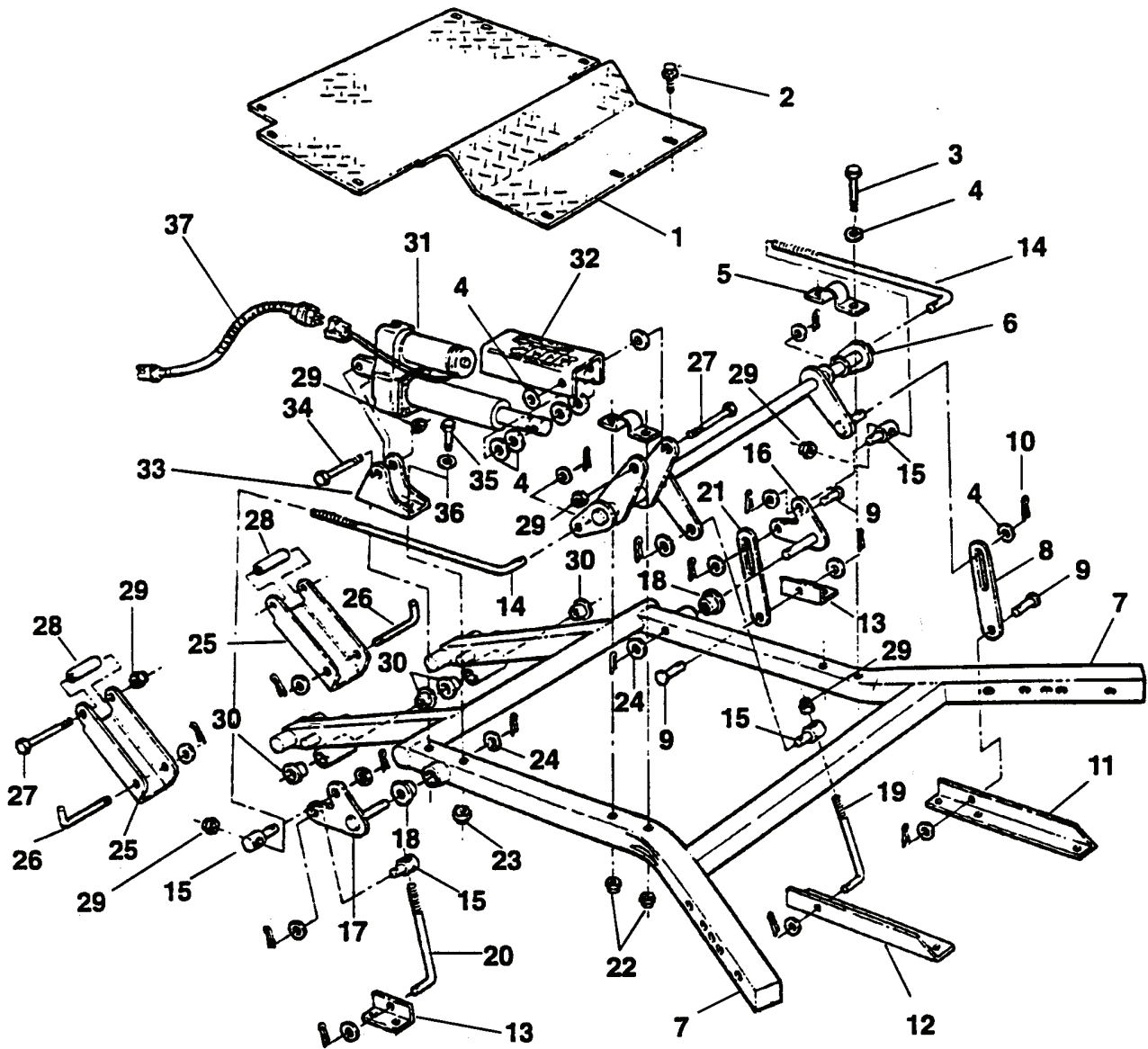


FIXED IDLER ASSEMBLY

52" & 61" DECK IDLER ASSEMBLIES

| ITEM | PART NO. | DESCRIPTION |
|------|----------|--|
| 1 | 9-1305 | SCREW, 3/8-16 x 2" Hex Head Cap, Grade 5 (2) |
| 2 | 9-1300 | WASHER, 3/8" Flat (2) |
| 3 | 3-5789 | PULLEY, Idler 5-1/2" O.D. (2) |
| 4 | 9-1299 | NUT, 3/8-16 Hex Nyloc (11) |
| 5 | 2-3556 | BUSHING (2) |
| 6 | 4-2619 | ARM, Idler (Weldment) |
| 7 | 7-6998 | FITTING, Lube 1/4-28 Straight |
| 8 | 9-1553 | SCREW, 3/8-16 x 1-3/4" Hex Head Cap, Grade 5 (2) |
| 9 | 3-5858 | SPACER, .50 I.D. x .75 O.D. x .83 |
| 10 | 3-5667 | SPRING, Extension |
| 11 | 9-1304 | SCREW, 3/8-16 x 1" Hex Head Cap, Grade 5 (6) |
| 12 | 4-1295 | PLATE, Tri-Mount (Weldment) |
| 13 | 1-2709 | E-RING 1" |
| 14 | 9-1331 | WASHER, .406 x 1.5 x .120 Yellow Zinc (2) |
| 15 | 3-6449 | STAND, Fixed Idler |
| 16 | 3-2031 | WASHER, 1.031 x 1.25 |

73" DECK FRAME ASSEMBLY

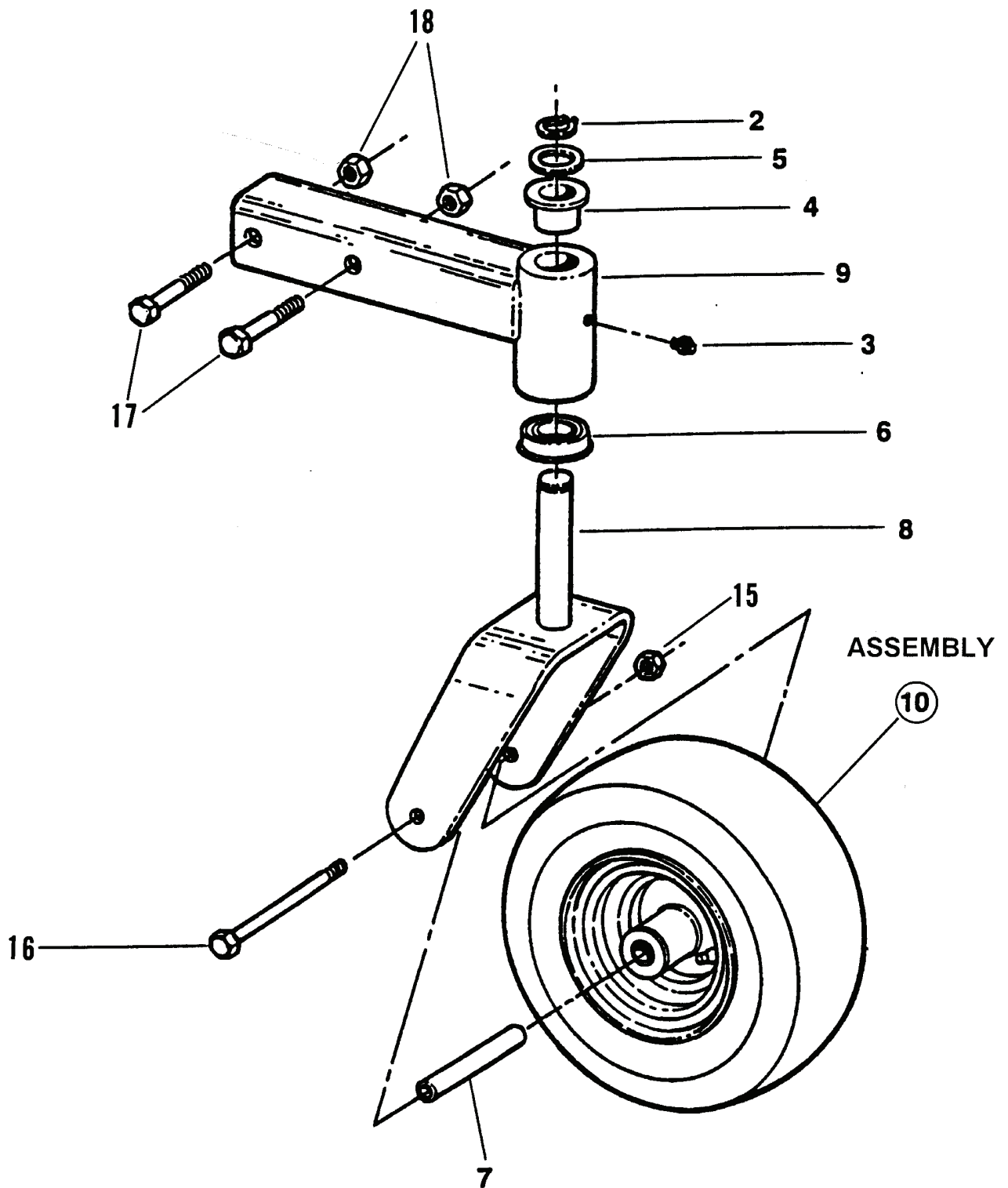


**NOTE: UNLESS OTHERWISE SPECIFIED, ALL FLAT WASHERS ARE ITEMS 4 (22 TOTAL),
AND ALL COTTER PINS ARE ITEMS 10 (16 TOTAL)**

73" DECK FRAME ASSEMBLY

| ITEM | PART NO. | DESCRIPTION |
|------|----------|---|
| 1 | 4-7171 | PLATE, Diamond Tread Foot |
| 2 | 9-1523 | SCREW, 5/16-18 x 5/8" Hex Washer Head, Self-Tapping Swage (8) |
| 3 | 9-0219 | SCREW, 5/16 x 2-1/2" Hex Head Cap, Grade 2 (4) |
| 4 | 9-1587 | WASHER, 17/32 Flat (22) |
| 5 | 4-3803 | BRACKET, Deck Lift Hanger (2) |
| 6 | 4-6595 | ARM, Front Lift (Weldment) |
| 7 | 4-7130 | FRAME, Deck (Weldment) |
| 8 | 4-6602 | BAR, 7" Lift |
| 9 | 1-2802 | PIN, 1/2 x 1 1/8" Clevis (YZ) (2) |
| 10 | 9-1516 | PIN, 5/32 x 1" Cotter (16) |
| 11 | 4-6508 | ANGLE, Front Deck Mounting (L.H.) |
| 12 | 4-6507 | ANGLE, Front Deck Mounting (R.H.) |
| 13 | 4-3824 | BRACKET, Deck Lift, Rear (2) |
| 14 | 4-6598 | ROD, Timing, 1/2" Threaded (2) |
| 15 | 4-6599 | SWIVEL, .50 Thru Hole (4) |
| 16 | 4-6596 | ARM, Rear Bellcrank (L.H.) (Weldment) |
| 17 | 4-6597 | ARM, Rear Bellcrank (R.H.) (Weldment) |
| 18 | 3-5496 | BEARING, .75 I.D. (4) |
| 19 | 4-6856 | J-BOLT, 1/2" Dia. x 8 1/2" Long (Front) |
| 20 | 4-6857 | J-BOLT, 1/2" x 7" Long (Rear) |
| 21 | 4-6603 | BAR, 5.62 Lift |
| 22 | 9-1298 | NUT, 5/16-18-3B (YZ) (4) |
| 23 | 9-1299 | NUT, 3/8-16 Nyloc (YZ) (2) |
| 24 | 9-0863 | WASHER, 13/16 x 1 15/32" (HS) (2) |
| 25 | 4-6594 | CHANNEL, Deck Stabilizer (2) |
| 26 | 4-7178 | J-BOLT, Deck Attachment (2) |
| 27 | 9-0735 | BOLT, 1/2-13 x 4" Hex (HO) (3) |
| 28 | 4-6605 | SLEEVE, Stabilizer (2) |
| 29 | 9-1922 | NUT, 1/2-13 Nyloc, Regular (YZ) (2) |
| 30 | 2-9258 | BUSHING, Suspension (4) |
| 31 | 3-6448 | LINEAR ACTUATOR, 1000 Lbs., 4" Stroke |
| 32 | 3-6454 | INDICATOR, Height Of Cut |
| 33 | 4-6593 | BRACKET, Actuator Anchor |
| 34 | 9-1218 | SCREW, 1/2 UNC x 2.5 Hex Head Cap (Black Phosphate) |
| 35 | 9-1501 | SCREW, 3/8-16 x 2-1/2" Hex Head Cap (2) |
| 36 | 9-1514 | WASHER, .406 x .812 x .075" (YZ) (2) |
| 37 | 4-7166 | WIRE HARNESS, Deck Lift |

73" DECK FRONT CASTER ASSEMBLY



73" DECK FRONT CASTER ASSEMBLY

| ITEM | PART NO. | DESCRIPTION |
|------|----------|---|
| 1 | -- | ASSEMBLY, 11" Front Caster (Includes Items 2 thru 14) (2) |
| 2 | 1-2709 | RING, 1" External Retaining |
| 3 | 1-3864 | FITTING, 3/16" Lube |
| 4 | 2-3556 | BUSHING, Caster |
| 5 | 2-3747 | BUSHING, 1" Machine |
| 6 | 2-9141 | BEARING, Flanged Ball |
| 7 | 3-5359 | TUBE, 5/8" x 18 Ga. Wall x 3.545 |
| 8 | 4-6620 | YOKE, Caster (Weldment) |
| 9 | 4-7138 | ARM, Telescoping Caster (Weldment) |
| 10 | 5-8248 | ASSEMBLY, Wheel (Includes Items 11 thru 14) |
| 11 | 1-2234 | VALVE, Air |
| 12 | 7-2197 | HUB, Caster Wheel White |
| 13 | 3-5358 | BEARING, 5/8" I.D. x 1-3/8" (2) |
| 14 | 3-5618 | TIRE, 11 x 4.00-5 Smooth Tread |
| 15 | 9-1917 | NUT, 7/16-14 Hex Nyloc |
| 16 | 9-1772 | SCREW, 7/16-14 x 6" Hex Head Cap, Grade 5 |
| 17 | 9-1821 | SCREW, 1/2-13 x 3" Hex Head Cap (2) |
| 18 | 9-1922 | NUT, 1/2-13 Hex Light Nyloc (2) |

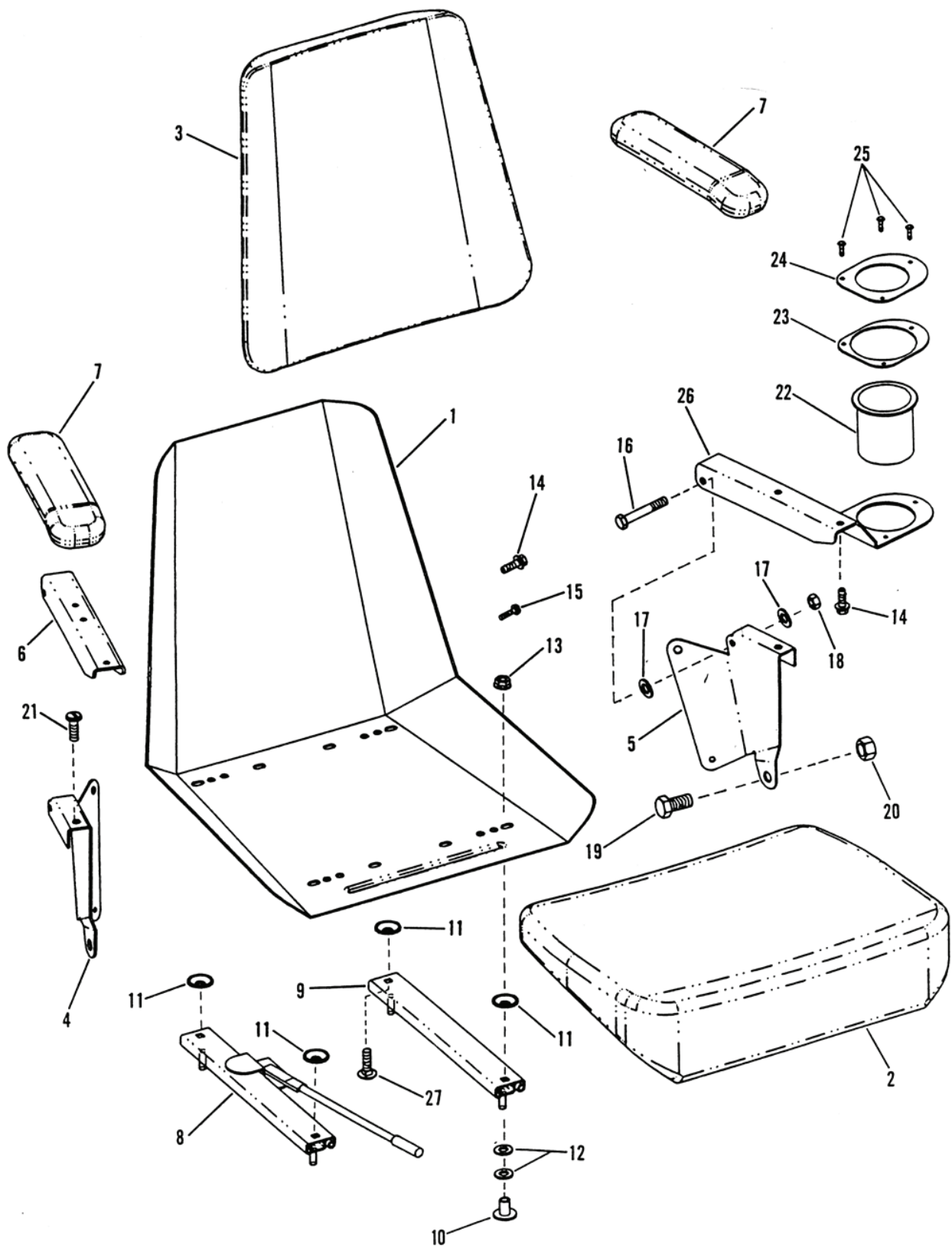
ELECTRICAL COMPONENTS

| ITEM | PART NO. | DESCRIPTION |
|------|----------|---|
| 1 | 3-5607 | CABLE, Battery- Positive |
| 2 | 3-5609 | CABLE, Battery- Negative |
| 3 | 3-5610 | BATTERY, 11 Plate- 375CCA |
| 4 | 1-8829 | HEAD LIGHT (2) |
| 5 | 2-6343 | SWITCH, Ignition- Afterfire Solenoid |
| 6 | 1-7590 | SWITCH, Seat NC (see page 19 for illustration) |
| 7 | 2-3355 | SWITCH, DPDT |
| 8 | 7-9208 | BUZZER, Pulsing |
| 9 | 1-5277 | HOUR METER, D.C. Series 1500 |
| 10 | 2-2366 | BRACKET, Battery |
| 11 | 2-2696 | SPRING, Battery |
| 12 | 9-0072 | SCREW, 1/4-20 x 5/8", Hex Head Cap, Gr. 5 (2) |
| 13 | 9-0372 | NUT, 1/4-20 Hex Center Lock, Grade B or 5 (2) |
| 14 | 9-0055 | WASHER, .28 I.D. x .63 O.D. x .06 Flat (2) |
| 15 | 1-5861 | CLIP, Harness |
| 16 | 2-3506 | BEZEL |
| 17 | 3-5779 | STRAIN RELIEF, Wire (2) |
| 18 | 1-2080 | CABLE TIE, 7" (15) |
| 19 | 3-5606 | HARNESS, Control Panel |
| 20 | 3-5614 | HARNESS, Front |
| 21 | 1-9547 | ASSEMBLY, Ammeter and Clamp |
| 22 | 3-5658 | SWITCH, PTO |
| 23 | 3-5661 | SPACER, PTO Switch |
| 24 | 3-5550 | BEZEL, Headlight (2) |
| 25 | 3-5659 | SWITCH, Lights |
| 26 | 9-1240 | SCREW, #10-32 x 5/8" Hex Wash. Hd. Machine, Gr. 5 (2) |
| 27 | 9-0376 | NUT, #10-32 Hex Nyloc (2) |
| 28 | 3-5700 | SWITCH, Self Centering, Deck Lift |
| 29 | 3-5702 | SEAL, Switch |
| 30 | 4-2834 | HARNESS, Deck Lift |
| 31 | 9-0585 | NUT, 5/16-18 Hex Flange Lock, Grade 5 |
| 32 | 1-6132 | SPACER, 5/8" |
| 33 | 9-1546 | WASHER, 5/8" Internal Tooth Lock |
| 34 | 1-2685 | NUT, 5/8-32 Hex |
| 35 | 1-1138 | KEY, and Ring |

| PLUG | CONNECTS TO: |
|------|--|
| A. | Electric Clutch |
| B. | Starter Solenoid |
| C. | Engine |
| D. | Battery |
| E. | Deck Lift Switch |
| F. | Fuse Box (mounted under Console Panel, item 3-5701, Page 20) |
| G. | PTO Switch |
| H. | Light Switch |
| I. | Amp Meter |
| J. | Hour Meter |
| K. | Buzzer |
| L. | Front Harness |

| PLUG | CONNECTS TO: |
|------|--------------------------------------|
| M. | Ignition Switch |
| N. | Electric Screwjack (3-6448, page 30) |
| O. | Front Harness |
| P. | Battery Terminal (Neg.) |
| Q. | Control Panel Harness (Green Wire) |
| R. | Ground (Engine Base) |
| S. | Control Panel Harness |
| T. | Right Head Light |
| U. | Park Break Switch (2-3355) |
| V. | Seat Switch (1-7590) |
| W. | Deck Lift Harness (3-5615) |
| X. | Left Head Light |
| Y. | Starter Solenoid |
| Z. | Control Panel Harness (Black Wire) |
| AA. | Battery Terminal (Pos.) |

SEAT ASSEMBLY



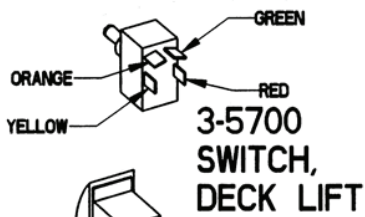
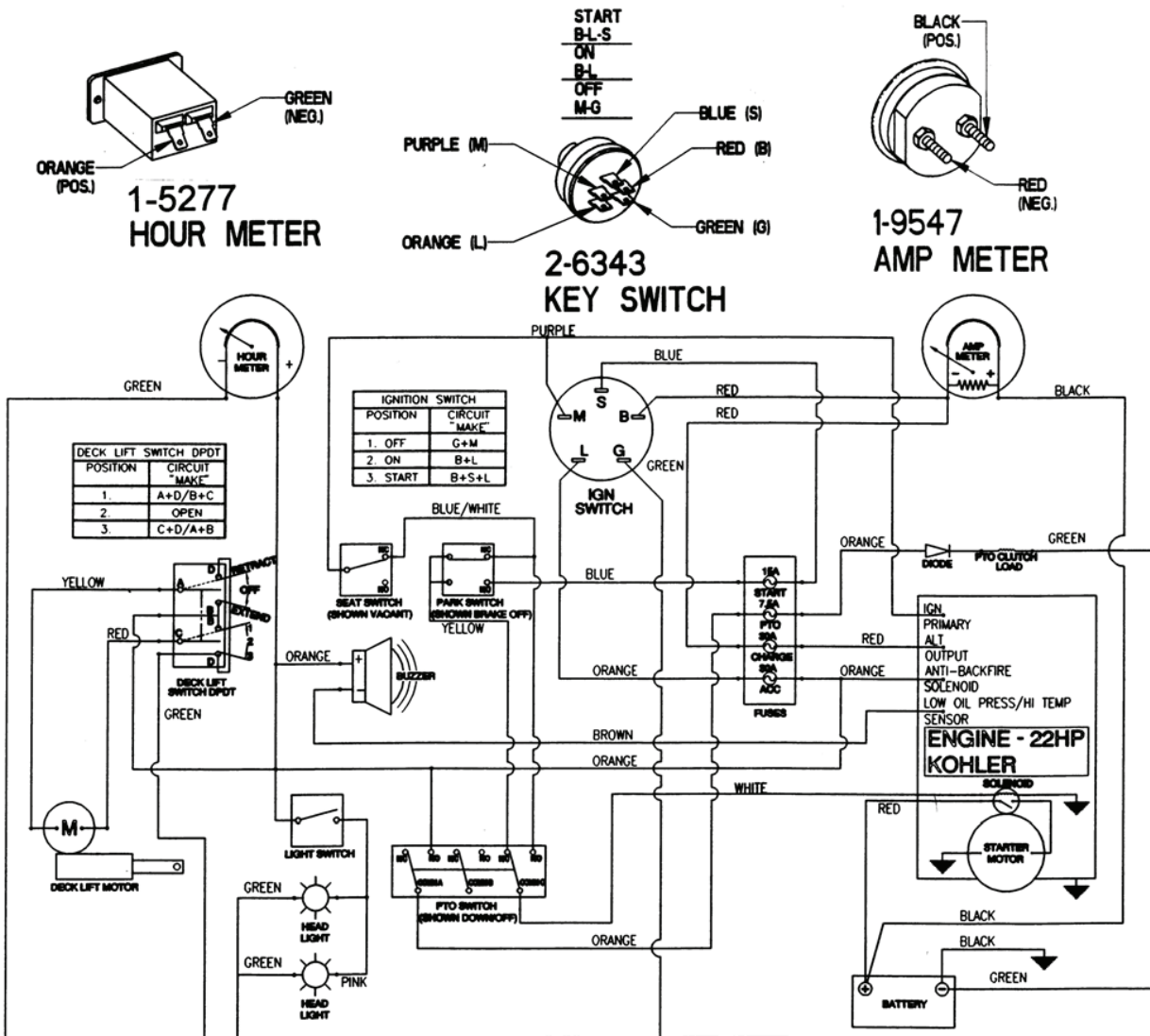
SEAT ASSEMBLY

| ITEM | PART NO. | DESCRIPTION |
|------|----------|--|
| 1 | ** | PAN, Complete |
| 2 | 3-6476 | CUSHION, Seat |
| 3 | 3-6477 | CUSHION, Back |
| 4 | 4-4724 | BRACKET, Armrest R.H. |
| 5 | 3-5568 | BRACKET, Armrest L.H. |
| 6 | 3-6478 | CHANNEL, Armrest (2) |
| 7 | 3-6479 | ARM PAD, Grey (2) |
| 8 | 3-6484 | ADJUSTER (with lock) |
| 9 | 3-6485 | ADJUSTER (without lock) |
| 10 | ** | STUD GUARD (4) |
| 11 | 3-6486 | SPACER, Bell (4) |
| 12 | 9-1296 | WASHER, 11/32" Flat, Grade 5 (8) |
| 13 | 9-1601 | NUT, 5/16-18 Hex Flange Grade 5 (6) |
| 14 | ** | SCREW, 1/4-20 x 3/4" Phillips (9) |
| 15 | ** | SCREW, #8 x 1/2" Set (2) |
| 16 | 2-7174 | SCREW, 5/16-18 x 2" Hex Head Cap, Grade 5 (2) |
| 17 | 3-5797 | WASHER, .406 I.D. Poly (4) |
| 18 | 9-1067 | NUT, 5/16-18 Hex Center Lock Grade B (2) |
| 19 | 9-0646 | SCREW, 1/2-13 x 1" Hex Head Cap, Grade 5 (2) |
| 20 | 9-0975 | NUT, 1/2-13 Hex Head Center Lock, Grade 5 (2) |
| 21 | 9-0683 | SCREW, 5/16-18 x 1" Slotted Pan Head |
| 22 | 4-2968 | HOLDER, Beverage |
| 23 | 4-4902 | SPACER, Cup Holder |
| 24 | 4-4903 | COVER, Cup Holder |
| 25 | 9-1919 | RIVET, 3/16 Pan Head (3) |
| 26 | 4-4904 | BRACKET, Arm Rest Cup Holder |
| 27 | 9-1303 | BOLT, 5/16-18 x 1" Short Neck Carriage Gr. 5 (6) |

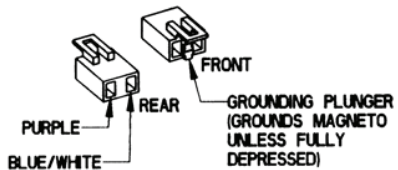
****NOTE: Not a Sales Item.**

Refer to Page 18 for Seat Support Components.

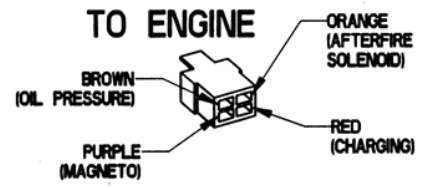
WIRING SCHEMATIC



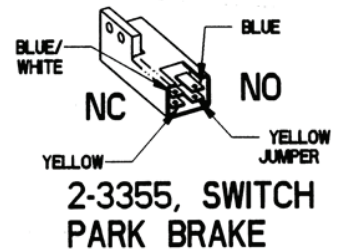
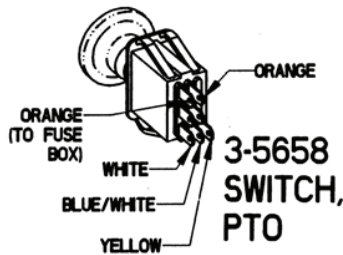
PLUG, SEAT SWITCH



TO ENGINE



1-7590 SWITCH, SEAT



Parts Manual for

SNAPPER®

OUT FRONT Z-RIDER™

ZERO TURNING HYDRO DRIVE

SERIES 0

IT IS THE POLICY OF SNAPPER TO IMPROVE ITS PRODUCTS WHENEVER IT IS POSSIBLE AND PRACTICAL TO DO SO. WE RESERVE THE RIGHT TO MAKE CHANGES OR ADD IMPROVEMENTS AT ANY TIME WITHOUT INCURRING ANY OBLIGATION TO MAKE SUCH CHANGES ON PRODUCTS MANUFACTURED PREVIOUSLY.