

*Parts Manual for*

# **SNAPPER®**

## **ELECTRIC CLUTCH HYDRO DRIVE RMO & ACS TRACTORS LT-200 SERIES**



<i>Model No.</i>	<i>Description</i>
2690593	ELT18538
2690685	ELT18538
2690863	ELT18538
2690864	ELT18538F
2690871	ELT185F
2690594	ELT2044
2690689	ELT2044
2690841	ELT2246
2690865	ELT22
2690577	LT18538
2690870	LT185
2690578	LT2042
2690579	LT2044
2690580	LT2250
<i>Decks:</i>	
1695146	38" Deck
1695455	38" Deck (French)
1695770	46" Deck

**Briggs & Stratton Yard Power Products Group**

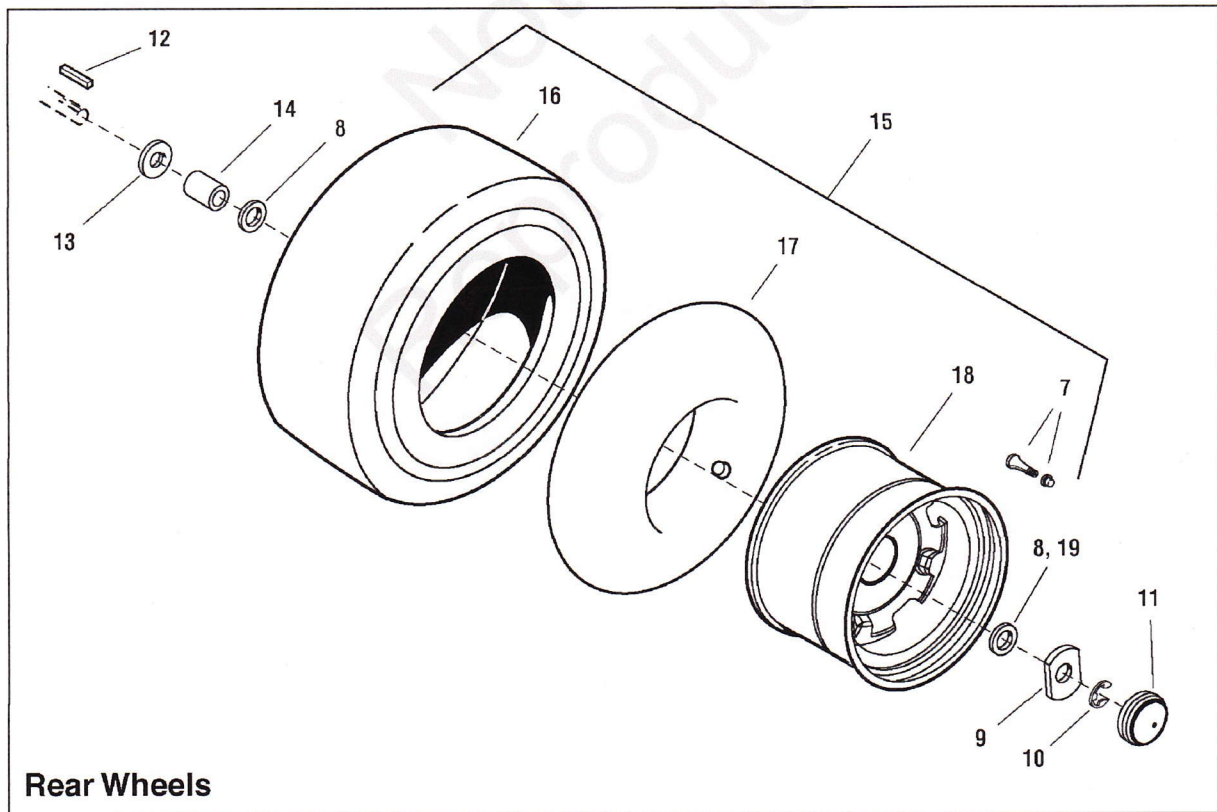
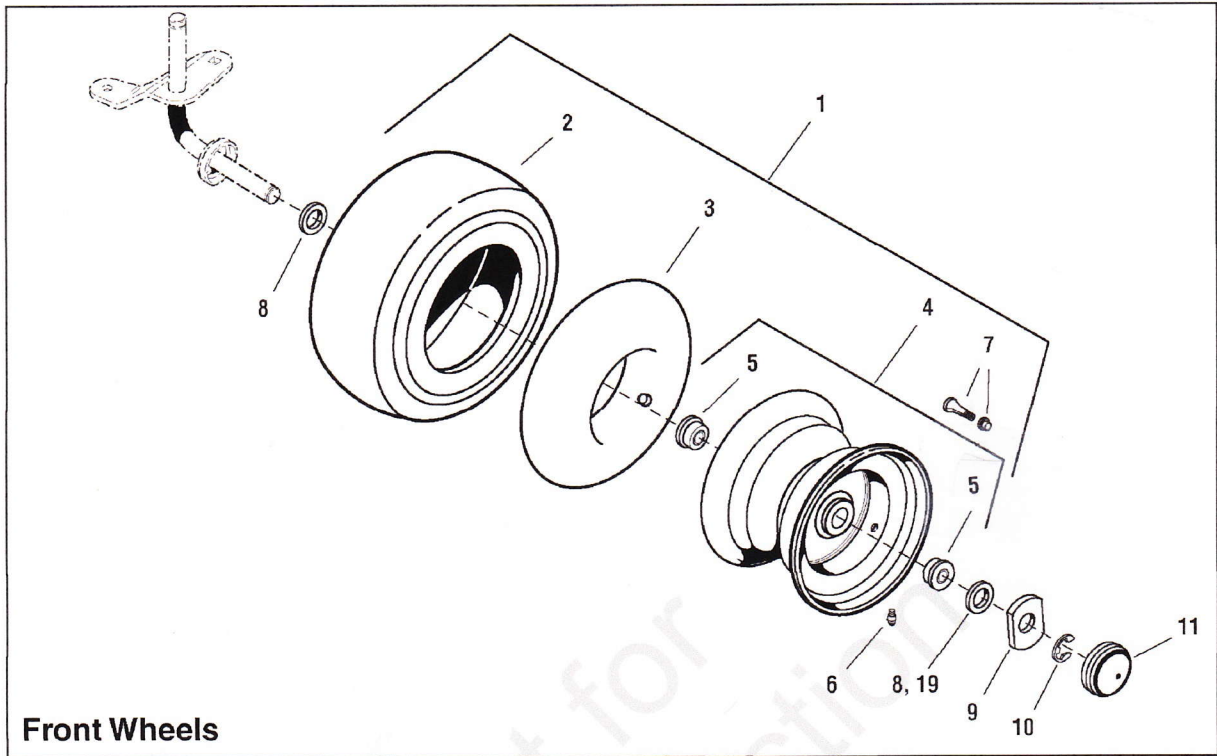
535 Macon Road  
McDonough, GA, 30253 U.S.A.  
800-935-2967

**Manual No.** 7006474  
**Revision: B** 10/7/2010

Not for  
Reproduction

<b>PAGE</b>	<b>GROUP</b>
4	Wheels & Tires Group
6	Hood, Grille & Dash Group
8	Seat Deck & Fuel Tank Group
10	Steering Group
12	Frame & Front Axle Group
16	Controls Group
18	Engine Group - 18HP, 20HP & 22HP Briggs & Stratton
20	Transmission Group
22	Transmission SERVICE PARTS - Tuff Torq K46BP
26	Transmission SERVICE PARTS - Tuff Torq K46BL
30	Lift Group - Manual
32	38" & 42" Mower Deck - Housing, Arbors & Blades Group
34	38" & 42" Mower Deck - Belt, Idler Arm & Hitch Group
36	38" & 42" Mower Deck - Height Adjustment & Roller Bar Group
38	French Guard Group - 38"
40	44" Mower Deck - Housing, Arbors & Blades Group
42	44" & 50" Mower Deck - Belt, Idler Arm & Hitch Group
44	44" & 50" Mower Deck - Height Adjustment & Roller Bar Group
46	46" Mower Deck - Housing, Arbor & Blades Group
48	46" Mower Deck - Clutch Group
50	46" Mower Deck - Height Adjustment Group
52	50" Mower Deck - Housing, Arbors & Blades Group
54	Decals Group
56	Electrical Group

# Wheels & Tires Group

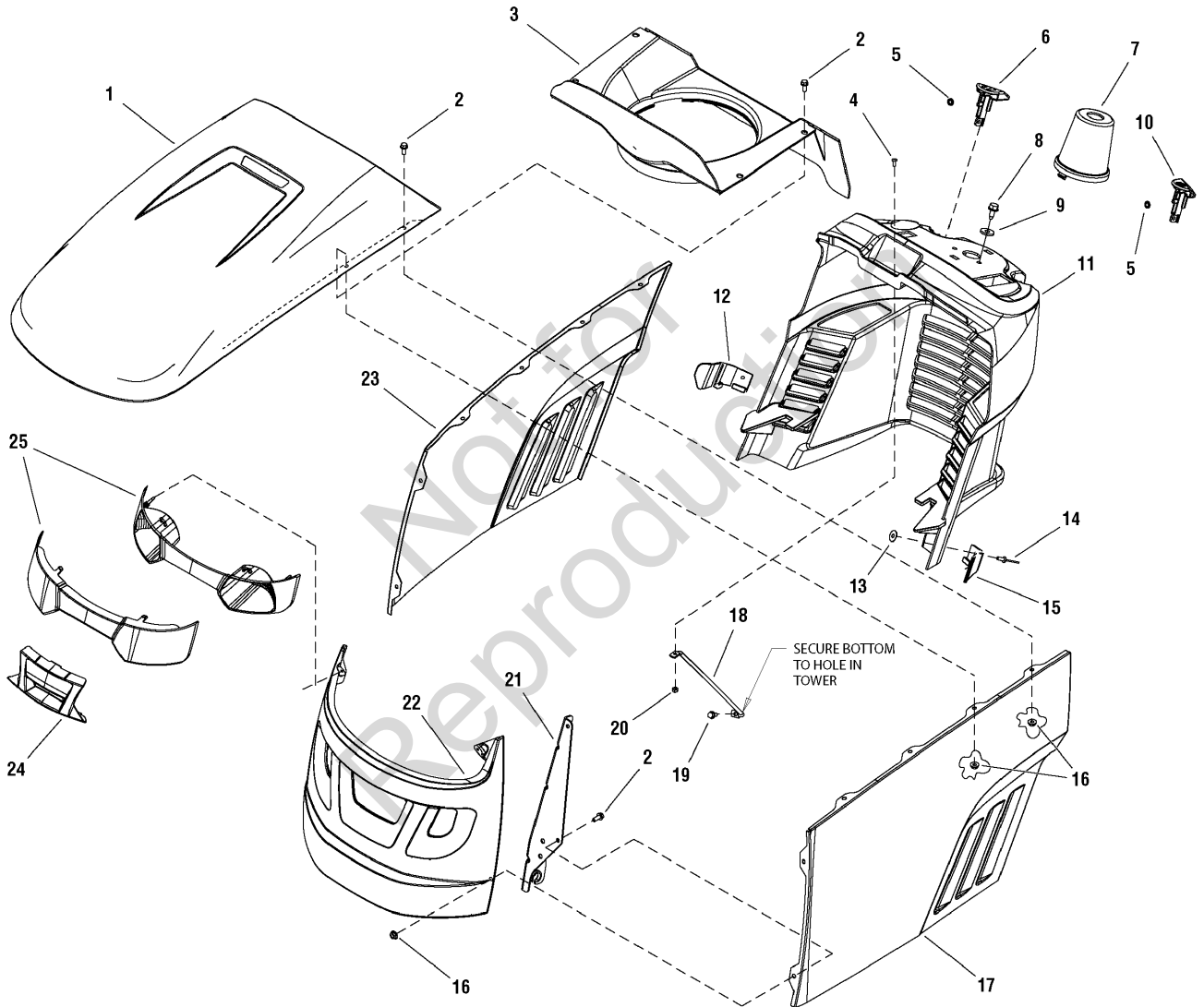


## Wheels & Tires Group

Item	Part No	Qty	Description
1	1729708	2	WHEEL & TIRE ASSEMBLY, Front
2	1731951	1	TIRE, Turf 15 X 6.00 - 6 Saver TL
3	1664090	1	TUBE, Tire, Front
4	1726301	1	WHEEL & BUSHINGS ASSEMBLY, Front
5	1713167	4	BEARING
6	2812808	1	FITTING, Grease, 1/4-28 Thread
7	2172353	2	VALVE STEM & CAP
8	2860183	8	WASHER, 3/4
8	722598	4	WASHER, Flat, 3/4 x 1-1/4 (Model 2690841 & 2690865 Only)
9	1722717	4	WASHER, Special Yellow
10	2827794	4	RING, Retaining
10	720010	4	RING, Retaining, 3/4 (Model 2690841 & 2690865 Only)
11	1722676	4	CAP, Hub
11	721318	4	CAP, Hub (Model 2690841 & 2690865 Only)
12	1713409	2	KEY, 3/16 x 3/16 x 3
12	720258	1	KEY, 3/16 x 3/16 x 2 (Model 2690841 & 2690865 Only)
13	2860202	2	WASHER
14	1730181	2	SPACER, 0.77 ID x 1-1/4 OD x 1.65 LG Powdered Metal Black
15	1729709	2	WHEEL & TIRE ASSEMBLY, Rear 20"
15	1732324	2	WHEEL & TIRE ASSEMBLY, Rear 22"
16	1731952	1	TIRE, Turf 20 X 8.00 - 8 Saver TL
16	1731953	1	TIRE, Turf 22 X 10.00 - 8 Saver TL
17	2164247	1	TUBE, Tire, Rear, 22 X 8 - 8
17	2173477	1	TUBE, Tire, Rear, 22 X 10 - 8
18	1731954	1	WHEEL, Hub
19	722620	4	WASHER, 3/4 x 1-7/8 (Model 2690841 & 2690865 Only)

**Footnotes:**

# Hood, Grille & Dash Group



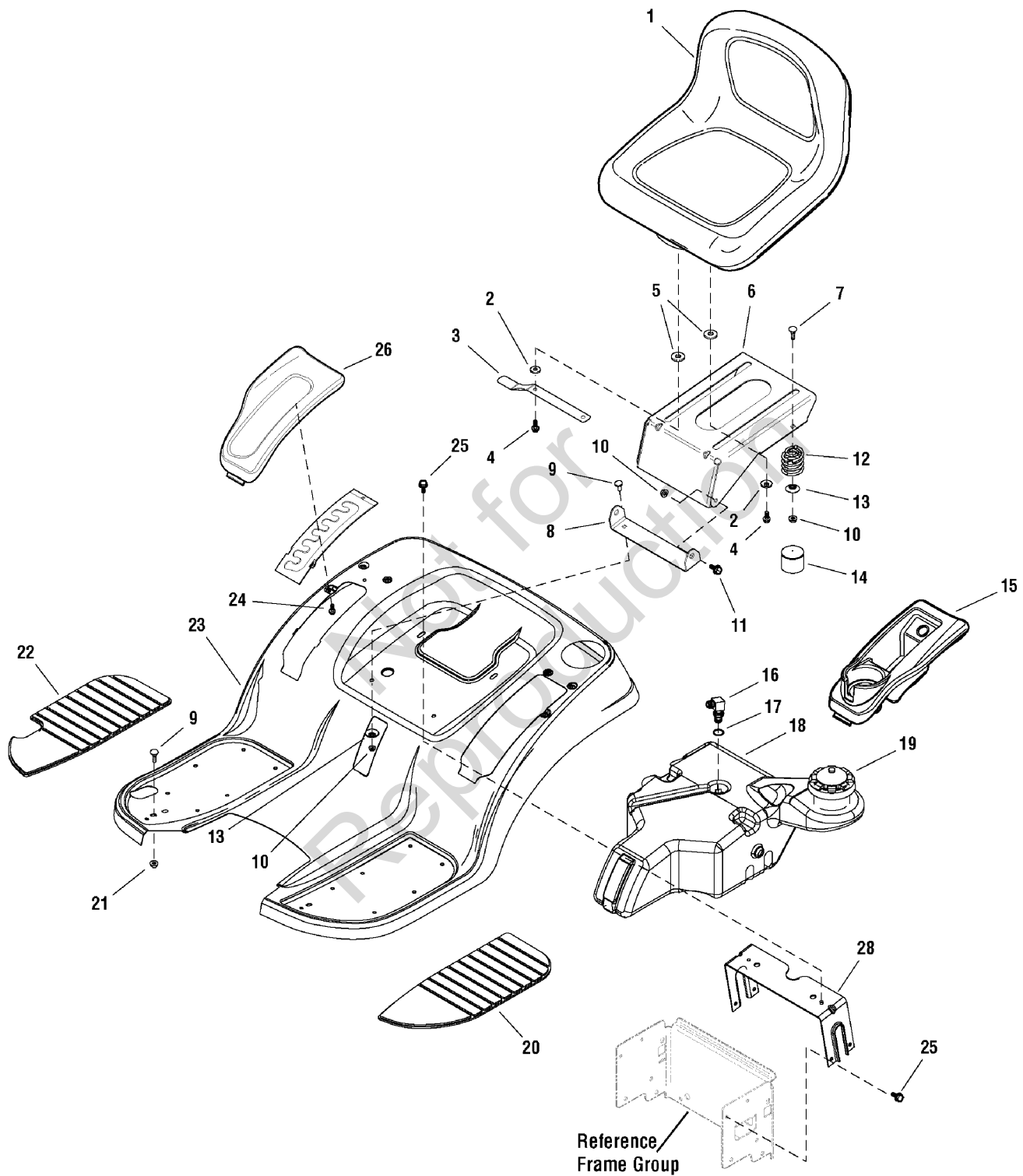
## Hood, Grille & Dash Group

---

Item	Part No	Qty	Description
1	1728031D	1	HOOD, W/Scoop
2	1960295	12	CAPSCREW, Whizlock, 1/4-20 x 5/8
3	1731891	1	DUCT, Air Inlet Plastic
4	1960392	1	SCREW, Pan Head #10-24 x 1/2
5	1960674	2	PUSH NUT
6	1728090	1	KNOB, Cruise Lock Green Plastic
7	1727999	1	COVER, Steering Shaft Plastic
8	1664847	2	CAPSCREW, Hex Head, Taptite, 5/16-18 x 3/4
9	1919381	2	WASHER, Plain, 5/16
10	1728089	1	KNOB, Brake Lock Plastic
11	1727293	1	DASHBOARD
12	1732031	1	GUIDE, Hood RH
13	1960096	2	WASHER
14	1928707	2	RIVET, Pop, Stem Black
15	1732030	1	GUIDE, Hood LH
16	1930641	12	NUT, Hex Flange Whiz, 1/4-20
17	1727295D	1	PANEL, Hood LH Side
18	1723123	1	ROD, Dash Support
19	1925003	1	SCREW, Taptite, 1/4-20 x 1/2
20	1933896	1	NUT, Hex, Nylon, Lock, #10-24
21	1727279A	1	HINGE, Hood LH
21	1727280A	1	HINGE, Hood RH
22	1728059D	1	GRILLE
23	1727294D	1	PANEL, Hood RH Side
24	1728975	1	INSERT, Lightbar
25	1727296	1	HEADLIGHT ASSEMBLY

### Footnotes:

# Seat Deck & Fuel Tank Group



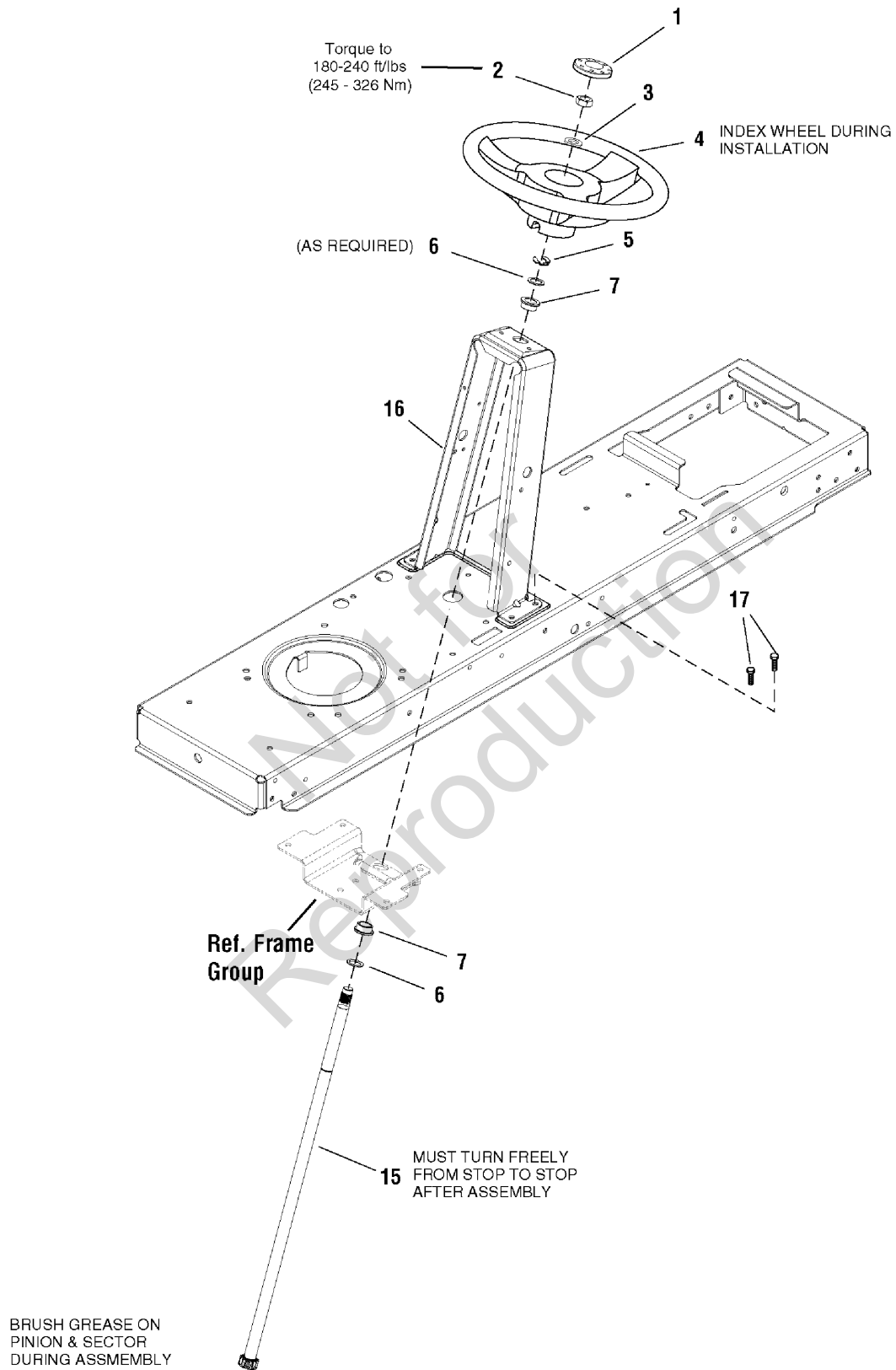


## Seat Deck & Fuel Tank Group

Item	Part No	Qty	Description
1	1730158	1	SEAT, Low Back (Used on 2690577 only)
1	1730159	1	SEAT, Hi Back, Steel Pan
2	1919381	4	WASHER, Plain, 5/16
3	1727268	1	LATCH, Seat 20GA E-Coat
4	1960667	4	CAPSCREW, Hex Head Flange Dog Point, 5/16-18 x 1
5	1731300	4	SPACER, Powdered Metal Yellow
6	1727265A	1	SUPPORT, Seat 12GA
7	1960282	2	BOLT, Carriage, 5/16-18 x 3/4
8	1727266A	1	PIVOT, Seat 10GA
9	1931333	4	BOLT, Carriage, 5/16-18 x 3/4
10	1960686	4	NUT, Hex Flange, 5/16-18 ESNA
11	1729576	2	BOLT, Shoulder 5/16-18 G5
12	1704728	2	SPRING, Compression
13	1709256	4	WASHER, Spring Black
14	1704724	2	COVER, Spring
15	1729001	1	POD, LH Cup Holder
16	1674231	1	ELBOW FITTING
17	1654930	1	BUSHING
18	1727305	1	TANK, Fuel
19	1715917	1	CAP, Gas
20	1728006	1	PAD, Footrest LH
21	1931277	4	NUT, Hex, Flange Whizlock, 5/16-18
22	1728007	1	PAD, Footrest RH
23	1727264D	1	DECK, Seat w/Footrests (Red)
24	1960536	6	SCREW, Hex, Washer Head, Plastite, 1/4-20 x 1/2
25	1930601	6	SCREW, Taptite, 5/16-18 x 5/8
26	1729000	1	POD, RH Lift Quadrant
28	1731310A	1	SUPPORT, Seat Deck

### Footnotes:

# Steering Group



## Steering Group

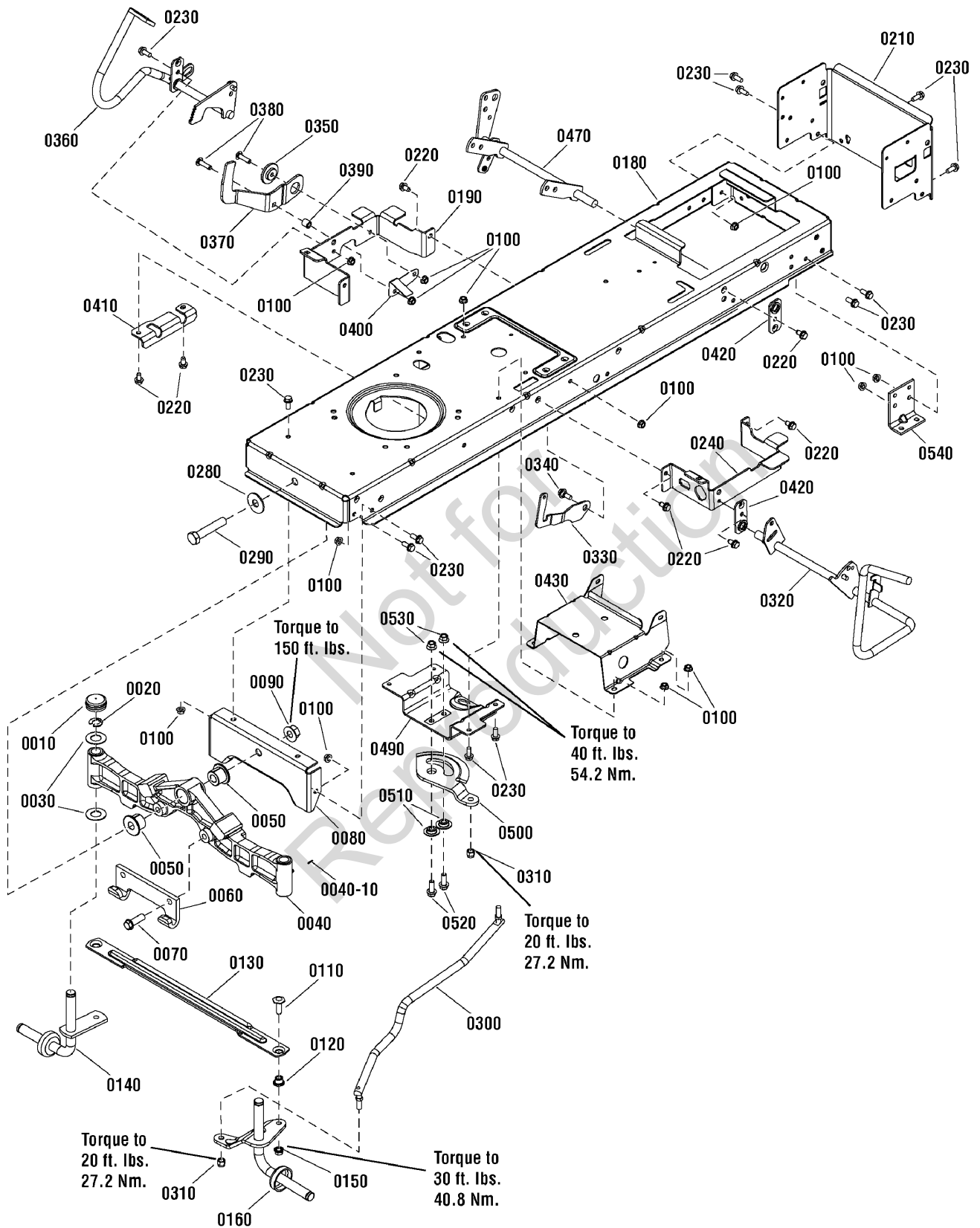
---

Item	Part No	Qty	Description
1	1725024	1	CAP, Steering Wheel, Plain
2	1960576	1	NUT, Hex Lock, ESNA Light, 5/8-18, Thin
3	1924366	1	WASHER, 5/8
4	1728069	1	STEERING WHEEL, w/Aluminum Insert
5	1611710	1	RING, Klipring Extension
6	1960114	2	WASHER
7	1729665	2	BUSHING, Steering
15	1727813	1	SHAFT, Steering Gear & Spline Yellow
16	1738935A	1	TOWER (Was 1727260A)
17	1930601	4	CAPSCREW, Hex Washer Head, Taptite, 5/6-18 x 5/8

Not for  
Reproduction

### Footnotes:

# Frame & Front Axle Group

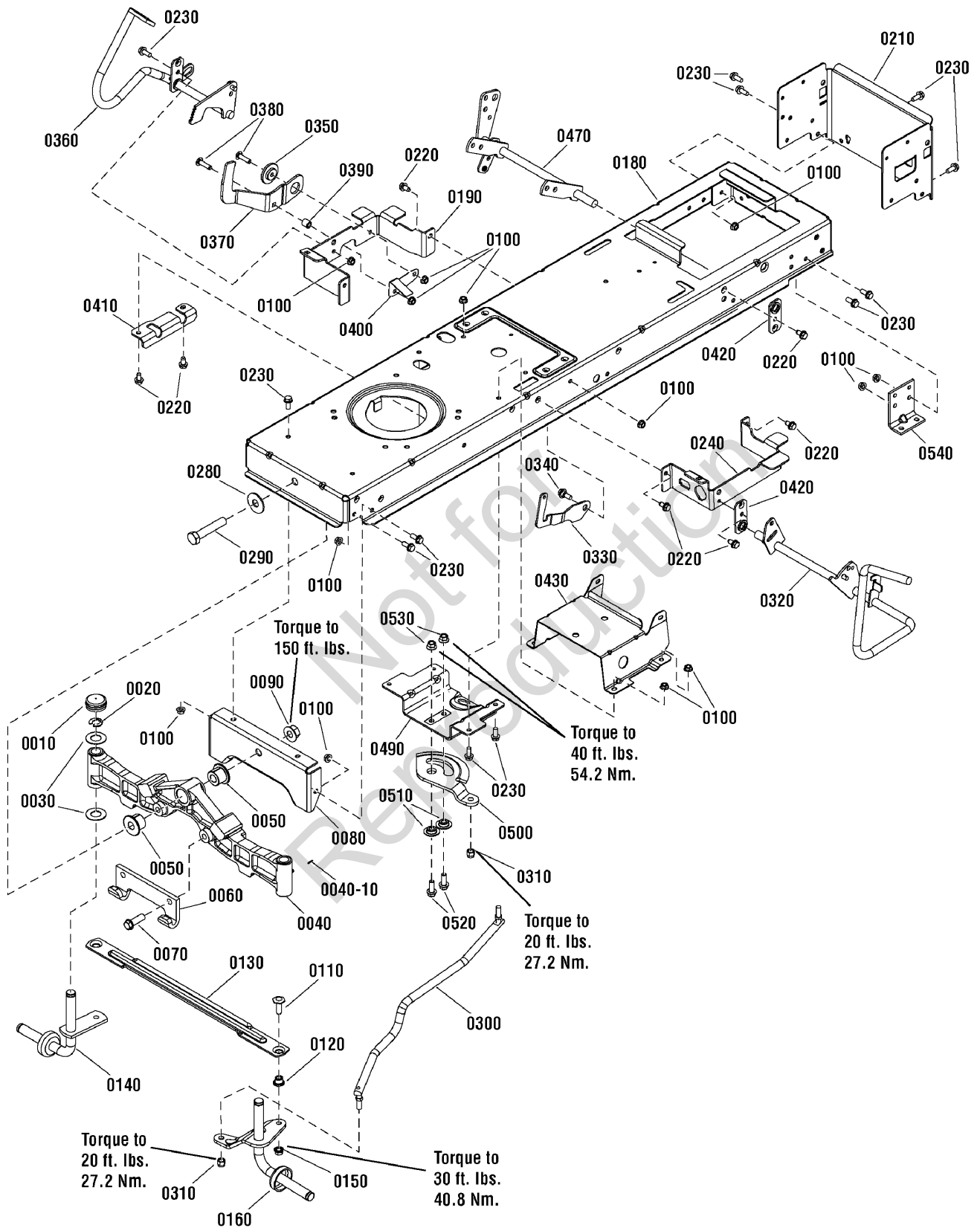


## Frame & Front Axle Group

Item	Part No	Qty	Description
0010	1726504	2	CAP, Hub
0020	1611710	2	RING, Klipring Extension
0030	2860183	4	WASHER, 3/4
0040	1728018	1	AXLE, Front Iron Casting Machined
0040-10	1704314	3	FITTING, Zerk
0050	1730186	2	BUSHING, Axle Pivot Powdered Metal
0060	1721918A	1	HOOK, "J"
0070	1960652	2	CAPSCREW, 7/16-14 x 1.5
0080	1727902A	1	PLATE, Axle Support
0090	2860646	1	NUT, Hex Flange Two-Way Lock, 5/8-11
0100	1931277	16	NUT, Hex, Flange Whizlock, 5/16-18
0120	1731912	2	BUSHING, Powdered Metal
0130	1728080A	1	ROD, Tie
0140	1727872A	1	SPINDLE & CUP ASSEMBLY, RH
0150	1930645	2	NUT, Hex, Flange, Locking, 3/8-16
0160	1727873A	1	SPINDLE & ARM ASSEMBLY, LH
0180	1738937	1	FRAME, 12 GA
0190	1727904A	1	SUPPORT, Front Footrest RH
0210	17368760	1	SUPPORT, Rear Frame
0220	1930601	14	SCREW, Taptite, 5/16-18 x 5/8
0230	1930591	14	CAPSCREW, Hex Head, Flange Whiz Lock, 5/16-18 x 3/4
0240	1727905A	1	SUPPORT, Front Footrest LH
0280	1960035	1	WASHER, Flat, 5/8
0290	2860744	1	CAPSCREW, Hex Head, 5/8-11 x 3-1/4 G5
0300	1727868	1	LINK, Drag
0310	1960747	2	NUT, Hex Nylock 3/8-24
0320	1727252A	1	PEDAL ASSEMBLY, Brake
0110	1960032	2	CAPSCREW, Hex Head, 3/8-16 x 1-1/4, .141 Thread G5
0330	1727269A	1	LATCH, Brake Lock
0340	1729576	1	BOLT, Shoulder, 5/16-18 x 1-1/8
0350	1727935	1	SPACER, Pivot
0360	1727250A	1	PEDAL ASSEMBLY, Forward
0370	1727246A	1	PEDAL, Reverse
0380	1960223	2	BOLT, Carriage, 5/16-18 x 1-1/4
0390	1728024	1	SPACER, Foot Pedal
0400	1728025	1	ACTUATOR, RMO Switch
0410	1727909A	1	BRACKET, Pedal Pivot
0420	1727911A	2	PLATE, Bearing
0430	1727282A	1	SUPPORT, Battery
0470	1737957	1	LIFT SHAFT ASSEMBLY
0490	1727940A	1	BRACKET, Sector Support
0500	1728027	1	GEAR, Steering
0510	1728122	2	SPACER, Sector Gear
0520	1934654	2	CAPSCREW, Hex Flange Whiz Lock, 3/8-16 x 1

### Footnotes:

# Frame & Front Axle Group



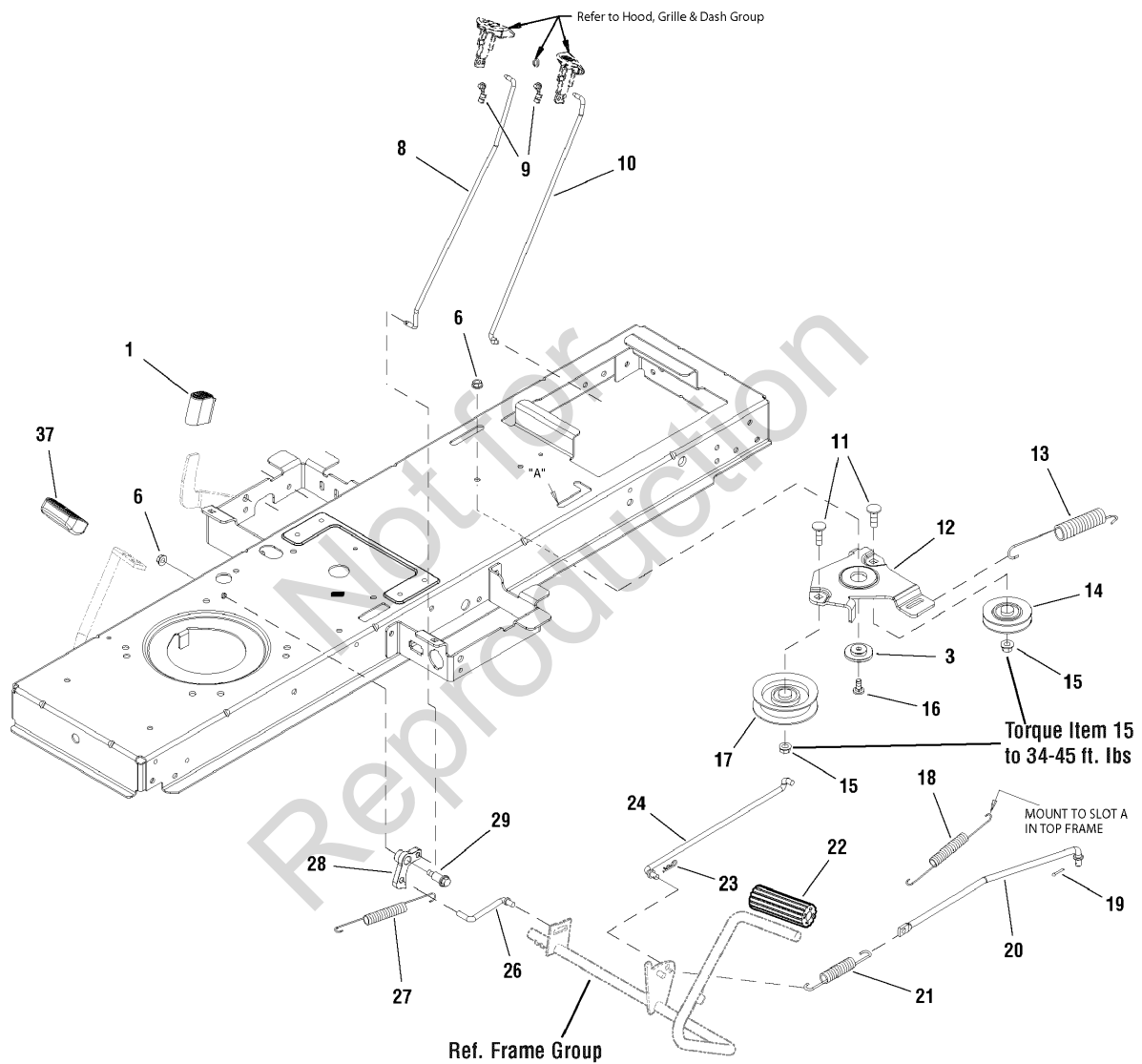
## **Frame & Front Axle Group**

---

<b>Item</b>	<b>Part No</b>	<b>Qty</b>	<b>Description</b>
0530	1931211	2	NUT, Hex Flange, 3/8-16
0540	1727903	2	SUPPORT, Transmission

Not for  
Reproduction

**Footnotes:**



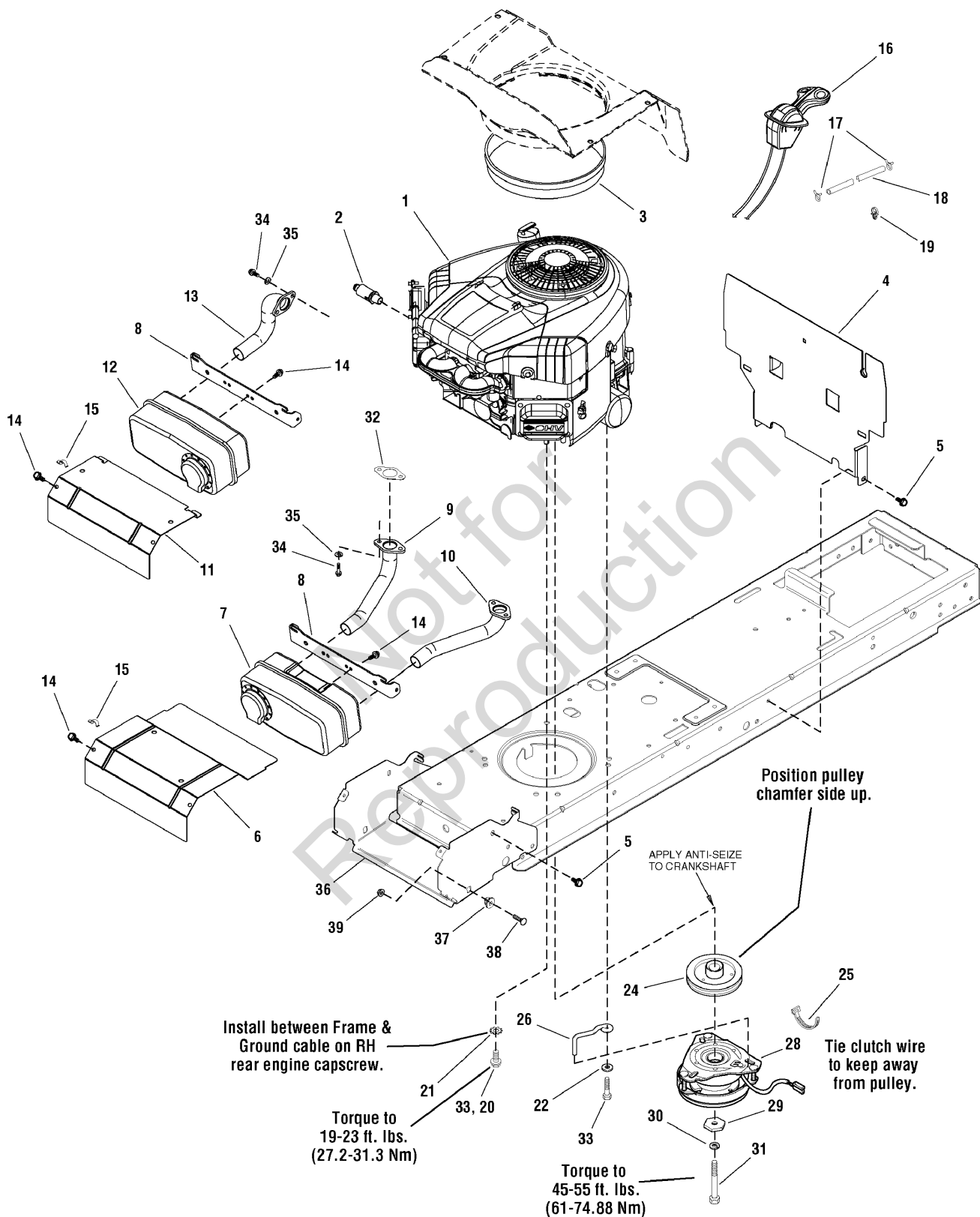


## Controls Group

Item	Part No	Qty	Description
1	1727259	1	PAD, Foot Pedal Reverse
3	1727935	2	SPACER, Pivot Powdered Metal
6	1931277	6	NUT, Hex, Flange Whizlock, 5/16-18
8	1727898	1	ROD, Cruise Latch, 16.97LG
9	1728111	2	CLIP, Linkage, Black
10	1727267	1	ROD, Parking Brake, 16.38 LG Yellow
11	1960268	2	BOLT, Carriage, 3/8-16 x 1-1/4
12	1727894A	1	BRACKET, Idler 7GA
13	1729620	1	SPRING, Extension 07.52 LG Black
14	1728001	1	PULLEY, 3 OD Plastic
15	1960687	2	NUT, Hex Flange, 3/8-16 ESNA
16	1931335	1	BOLT, Carriage, 5/16-18 x 1
17	1728000	1	PULLEY, Idler
18	1721995	1	SPRING, Extension
19	1918447	1	PIN, Cotter 3/32 x 3/4
20	1727253	1	ROD, Brake, 15.1 LG
21	1731262	1	SPRING, Extension 05.37 LG Black
22	1727261	1	PEDAL, Brake Rubber
23	1722460	1	PIN, Quick
24	1727254	1	ROD, Brake Return, 12.60 LG
26	1727899	1	ROD, Cruise Latch, 2.83 LG
27	2159181	1	SPRING, Tension, Clutch
28	1727897	1	LATCH, Cruise Powdered Metal
29	1728976	1	BOLT, Shoulder 5/16-18 G5
37	1721675	1	PAD, Foot Pedal Forward

Not for  
Reproduction

### Footnotes:



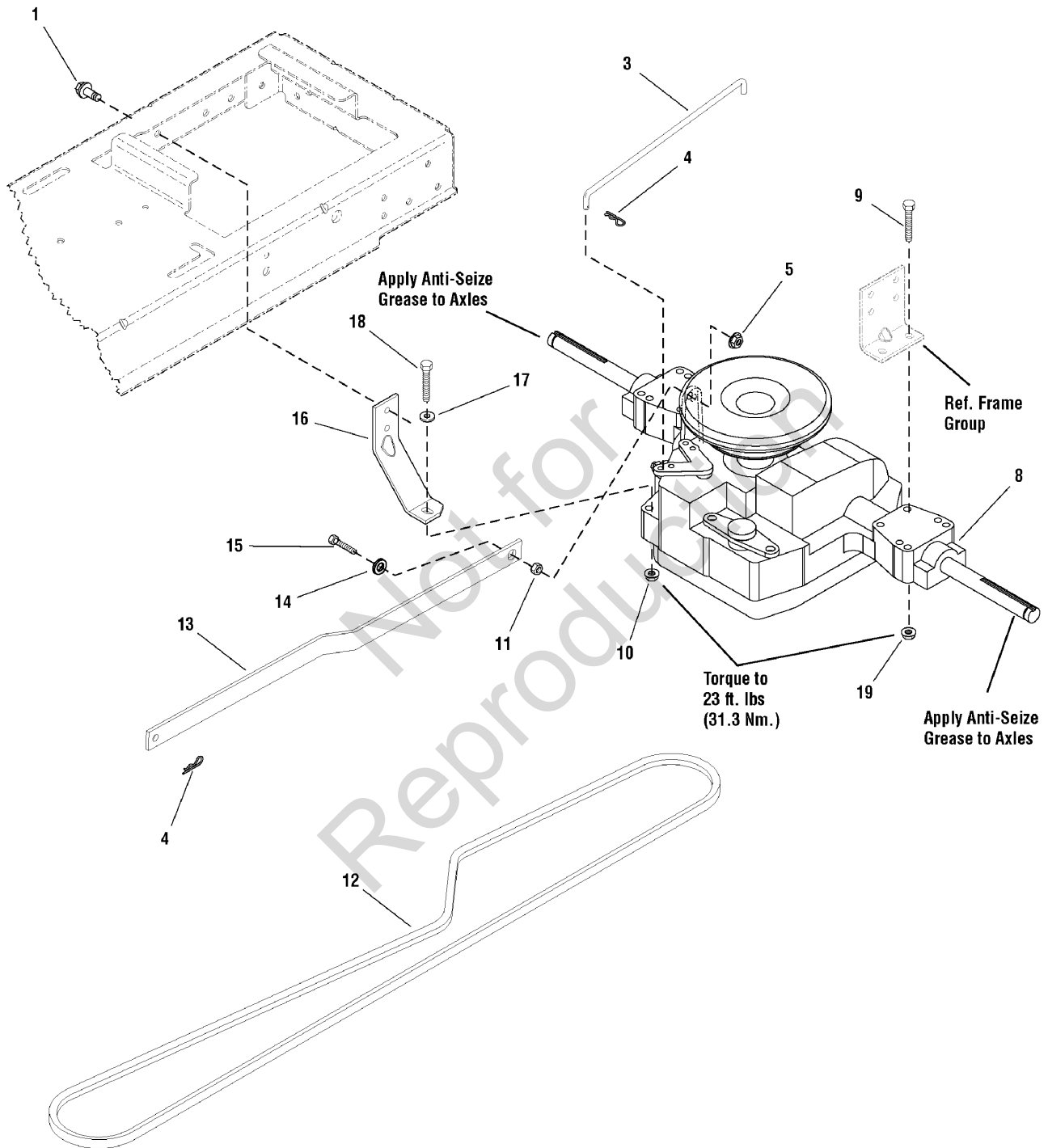
## Engine Group - 18HP, 20HP & 22HP Briggs & Stratton

Item	Part No	Qty	Description
1	31Q777-0113-B1	1	* ENGINE, 18.5HP Briggs & Stratton Single Intek (Models 2690593, 2690577 & 2690685)
1	31P777-0147-B1	1	* ENGINE, 18.5HP Briggs & Stratton Single Intek (Models 2690863, 2690864, 2690870 & 2690871)
1	40G777-0400-E1	1	* ENGINE, 20HP Briggs & Stratton Twin Intek (Models 2690578, 2690579, 2690594 & 2690689)
1	44K777-0115-E1	1	* ENGINE, 22HP Briggs & Stratton Twin Intek (Model 2690580)
1	407777-0153-B1	1	* ENGINE, 22HP Briggs & Stratton Twin Intek (Models 2690841 & 2690865)
2	1717473	1	VALVE, Shut Off Oil Drain
3	1731970	1	SEAL, Short
3	1731971	1	SEAL, Long (B&S Single)
4	1728058A	1	SHIELD, Heat
5	1930601	4	SCREW, Hex Washer Head Taptite 5/16-18 x 5/8
6	1727997A	1	SHIELD, Heat (B&S Twin)
7	1727994	1	MUFFLER (B&S Twin)
8	1727976A	1	BRACKET, Muffler Mount
9	1727979	1	PIPE, Exhaust R.H. (B&S Twin)
10	1727980	1	PIPE, Exhaust L.H. (B&S Twin)
11	1727996A	1	SHIELD, Heat
12	1727993	1	MUFFLER
13	1728959	1	PIPE, Exhaust (B&S Single)
14	1925003	4	SCREW, Hex Washer Head Taptite 1/4-20 x 1/2
15	2834683	1	CLIP, Speed Wire
16	1731410	1	CONTROL, Throttle Double (B&S Single)
16	1731411	1	CONTROL, Throttle Double (B&S Twin)
16	1736868	1	CONTROL, Throttle, Choke-A-Matic (Models 2690841 & 2690865 only)
17	2860112	2	CLAMP, Hose
18	1732001	1	HOSE, Fuel
19	1730268	2	CLIP, Hose
20	2827187	3	SCREW, Hex Washer Head Taptite 3/8-16 x 1 (B&S Single)
21	2820427	1	LOCKWASHER, External Tooth 3/8
22	1924940	1	WASHER, 3/8
24	1732576	1	PULLEY & HUB ASSEMBLY, Engine
25	1701011	1	TIE, Self Locking
26	1732875	1	RETAINER, Clutch
28	1731275	1	CLUTCH, Electric OGURA
29	1708264	1	WASHER, Hex
30	1918199	1	LOCKWASHER, Spring
31	1960649	1	CAPSCREW, Hex Head 7/16-20 x 3-1/2 G5
32	1731214	1	GASKET, Exhaust
33	2828635	2	SCREW, Hex Washer Head Taptite 3/8-16 x 1-1/4 (Qty. 1 used on 18.5HP)
34	1936228	2	CAPSCREW, Hex Socket Head 5/16-18 x 3/4 G8
35	1917356	2	LOCKWASHER, Spring 5/16
36	1727982A	1	SUPPORT, Muffler, Hood
37	1728086	2	PIVOT, Hood
38	1931335	2	BOLT, Carriage, 5/16-18 x 1
39	1931277	2	NUT, Hex Flange Whizlock, 5/16-18

### Footnotes:

NOTE\* See your local Briggs & Stratton distributor for parts and service.

**Transmission Group**



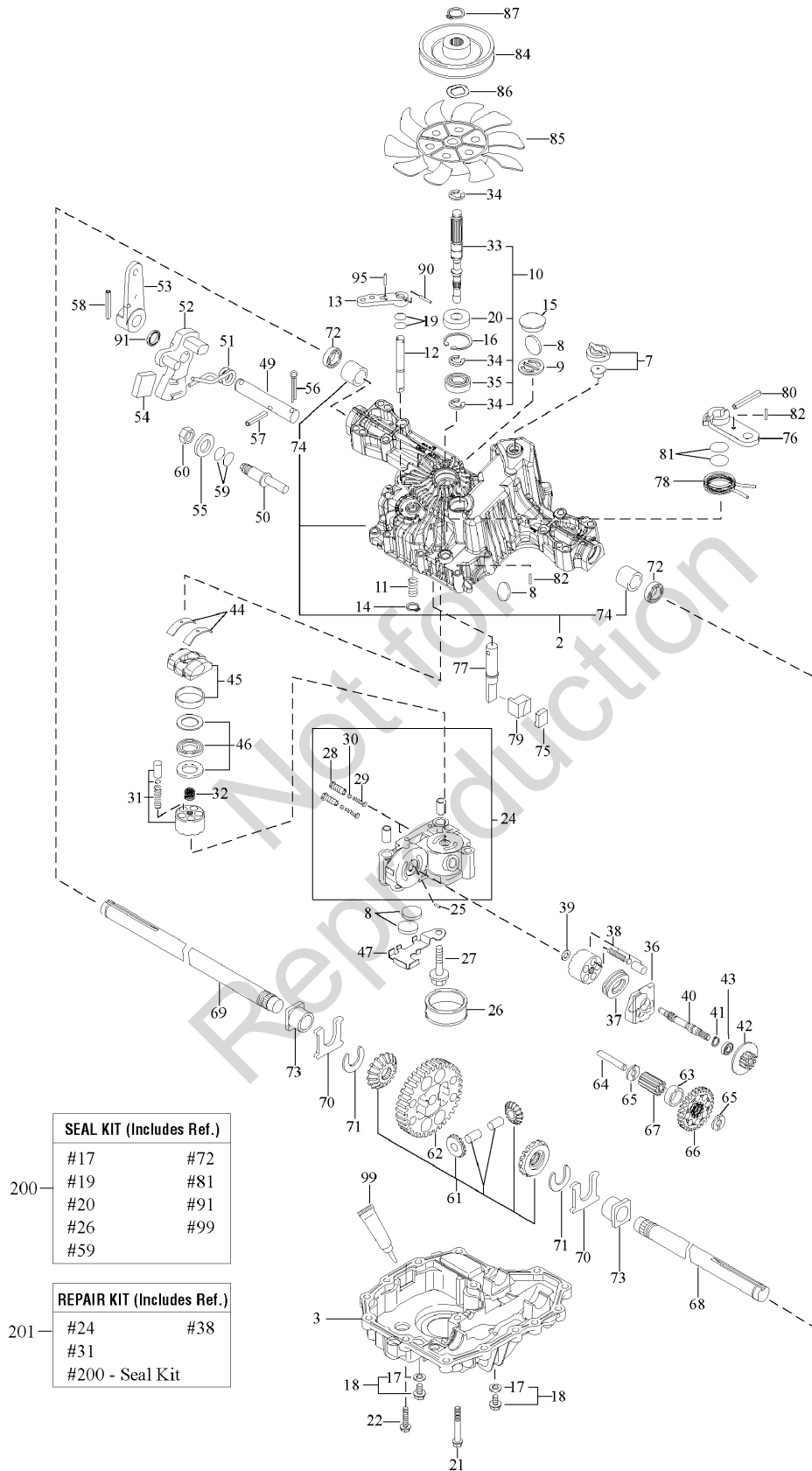
## Transmission Group

---

Item	Part No	Qty	Description
1	1664847	1	CAPSCREW, Hex Head, Taptite, 5/16-18 x 3/4
3	1728120	1	ROD, Bypass, 11.44 LG Yellow
4	1722460	2	PIN, Quick
5	1960686	1	NUT, Hex Flange, 5/16-18 ESNA
8	1729588	1	TRANSMISSION ASSEMBLY, K46BP
8	1729589	1	TRANSMISSION ASSEMBLY, K46BL (Used with 22" Tire Models)
9	1960586	4	SCREW, Hex Head Flange Lock, 5/16-18 x 2-1/2
10	1960686	1	NUT, Hex Flange, 5/16-18 ESNA
11	1666697	1	SPACER
12	1728008	1	V-BELT, Drive Belt, Aramid/Kevlar 89.25" EL HA
13	1727258A	1	ARM, Control 7GA
14	1919326	1	WASHER, Flat, 5/16
15	1921333	1	CAPSCREW, Hex Head, 5/16-18 x 1
16	1728043A	1	STRAP, Torque 7 GA
17	1919381	1	WASHER, Plain, 5/16
18	1922127	1	CAPSCREW, Hex Head, 5/16-18 x 1-3/4
19	1931277	8	NUT, Hex, Flange Whizlock, 5/16-18

Not for  
Reproduction

### Footnotes:

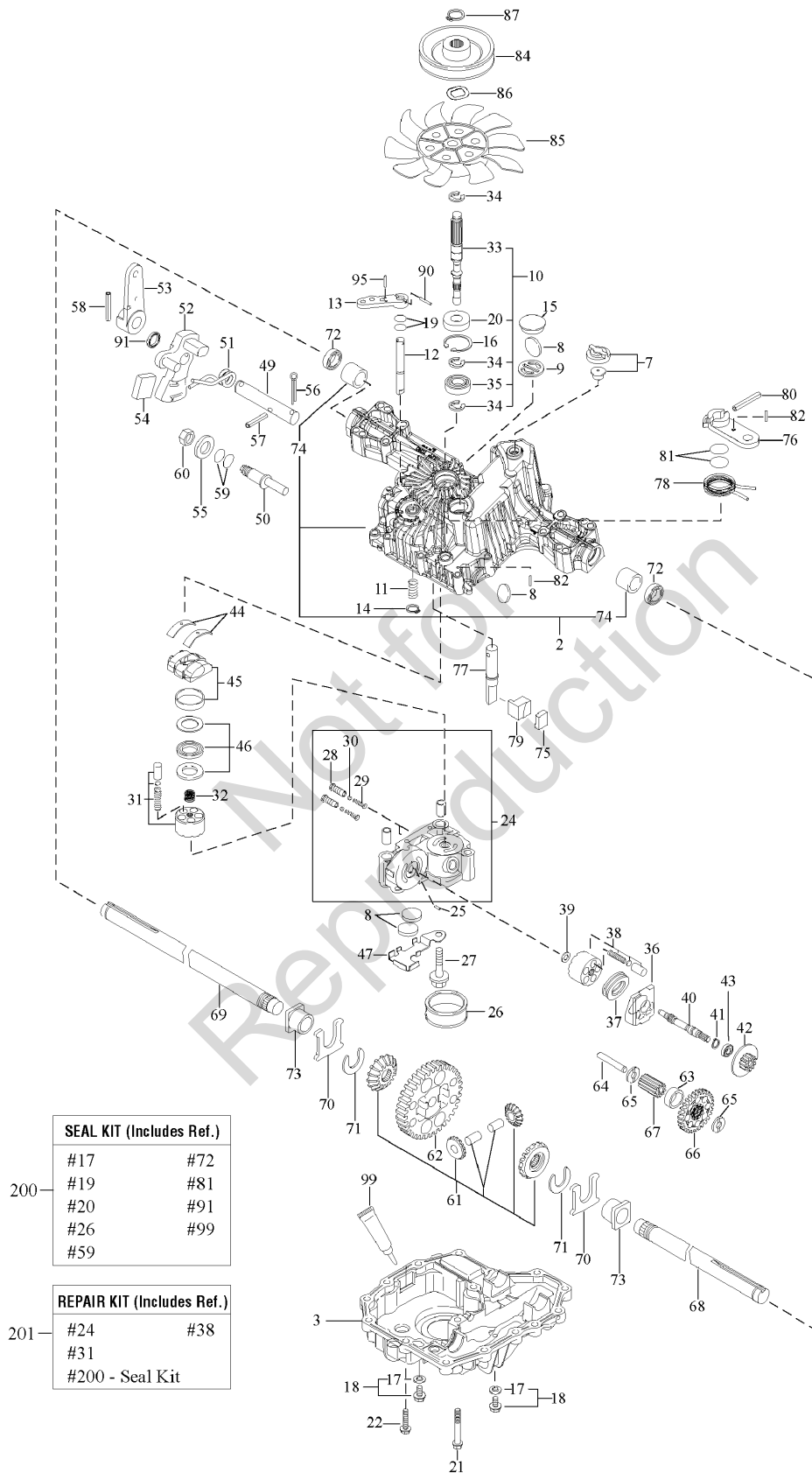


## Transmission SERVICE PARTS - Tuff Torq K46BP

Item	Part No	Qty	Description
1	1729588		*TRANSMISSION, Tuff Torq K46BP
2	-----		*KIT, Upper Case
3	-----		*LOWER CASE
7	1718052		VENT VALVE 15
8	1724279		MAGNET
9	-----		*MAGNET HOLDER
10	-----		*PUMP SHAFT/BEARING KIT
11	-----		*SPRING 25
12	1724281		BYPASS SHAFT A
13	1720418		LEVER, Bypass
14	1718061		RING, Snap, 10
15	1724282		SEALING CAP 30
16	1708650		RING, Snap, C 35
17	1724323		SEAL WASHER 8
18	-----		*KIT, Drain Bolt
21	-----		*SCREW, Tapping, 8 * 55
22	1707789		SCREW, Tapping, 8 * 30
24	-----		*CENTER CASE E W/BALL IDS SERVICE KIT
25	1718070		PIN, 3 * 9.8
26	-----		*FILTER 105
27	1720805		BOLT, 10 * 75
28	-----		*IDS VALVE 1.0
29	1724287		IDS SPRING
30	-----		*BALL, 3/16
31	-----		*KIT, Cylinder Block (Pump)
32	1724290		SPRING
33	1739892		PUMP SHAFT
34	1718076		E-RING 15
35	1708673		BEARING, 6202C3
36	1718077		MOTOR HOUSING
37	-----		*THRUST BEARING 51106
38	1718079		KIT, Cylinder Block
39	1718084		WASHER, 12 * 24 * 1
40	1724943		MOTOR SHAFT
41	1708672		RING, Snap, S15
42	1724294		BRAKE DISC/MOTOR GEAR (11T)
43	-----		*BEARING, 6202 RSR C3
44	1718089		THRUST METAL
45	-----		*SWASH PLATE CMP
46	1718086		THRUST BEARING K81105
49	-----		*CONTROL SHAFT
50	-----		*FULCRUM
51	-----		*SPRING, Torsion
52	-----		*CONTROL ARM A

### Footnotes:

\*Note: See your local authorized dealership for Tuff Torq parts and warranty or contact Tuff Torq at [www.tufftorqservices.com](http://www.tufftorqservices.com) (U.S. 1-866-572-3441; Int'l 01-423-585-1977)





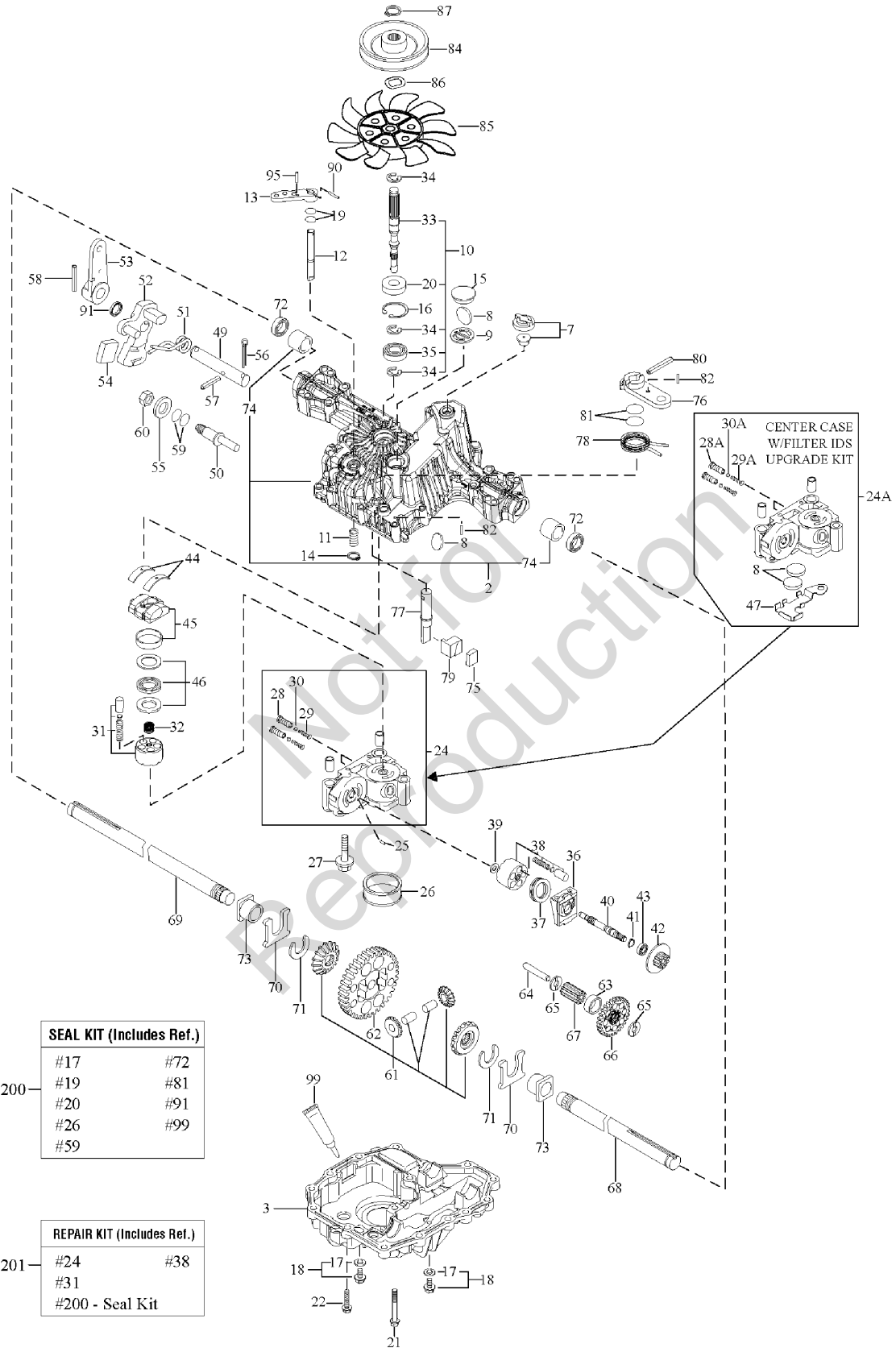
## Transmission SERVICE PARTS - Tuff Torq K46BP

Item	Part No	Qty	Description
53	1724347		CONTROL LEVER C
54	-----		*JERKY PLATE
55	1708689		WASHER, 12
56	1724349		COTTER PIN, 1/8 * 3/4
57	1724296		SPRING PIN 6 * 36
58	1718100		ROLL PIN 6 * 40
60	1708692		NUT 12
61	-----		*KIT, Differential Gear
62	-----		*FINAL GEAR (54T)
63	-----		*FINAL PINION COLLAR
64	-----		*REDUCTION SHAFT
65	1724948		WASHER, 12 * 32 * 3.2
66	-----		*REDUCTION GEAR (37T)
67	-----		*FINAL PINION GEAR (10T)
68	1724303		AXLE SHAFT, Left
69	1724304		AXLE SHAFT, Right
70	-----		*THRUST WASHER
71	1718113		RING 17
72	1718111		SEAL 19 * 32 * 8
73	1718110		BUSHING, 19 * 25
74	-----		*BUSHING, 19.05
75	1724305		BRAKE SHOE
76	1724306		BRAKE LEVER
77	-----		*BRAKE SHAFT
78	-----		*BRAKE RETURN SPRING
79	1724309		BRAKE ACTUATOR
80	1724310		SPRING PIN 5 * 32
82	1724311		SPRING PIN 4 * 16
84	1732918		PULLEY D
85	1724314		FAN, White
86	1724315		WASHER, Wave
87	1724316		SNAP RING
90	-----		*SPRING PIN 3.0A * 20
95	-----		*SPRING PIN 3.0A * 16
99	-----		*SEALANT
200	1727541		K46 & T40 SEAL KIT (ALL MODELS)
201	-----		*REPAIR KIT K46

### Footnotes:

\*Note: See your local authorized dealership for Tuff Torq parts and warranty or contact Tuff Torq at [www.tufftorqservices.com](http://www.tufftorqservices.com) (U.S. 1-866-572-3441; Int'l 01-423-585-1977)

# Transmission SERVICE PARTS - Tuff Torq K46BL



SEAL KIT (Includes Ref.)	
#17	#72
#19	#81
#20	#91
#26	#99
#59	

REPAIR KIT (Includes Ref.)	
#24	#38
#31	
#200 - Seal Kit	

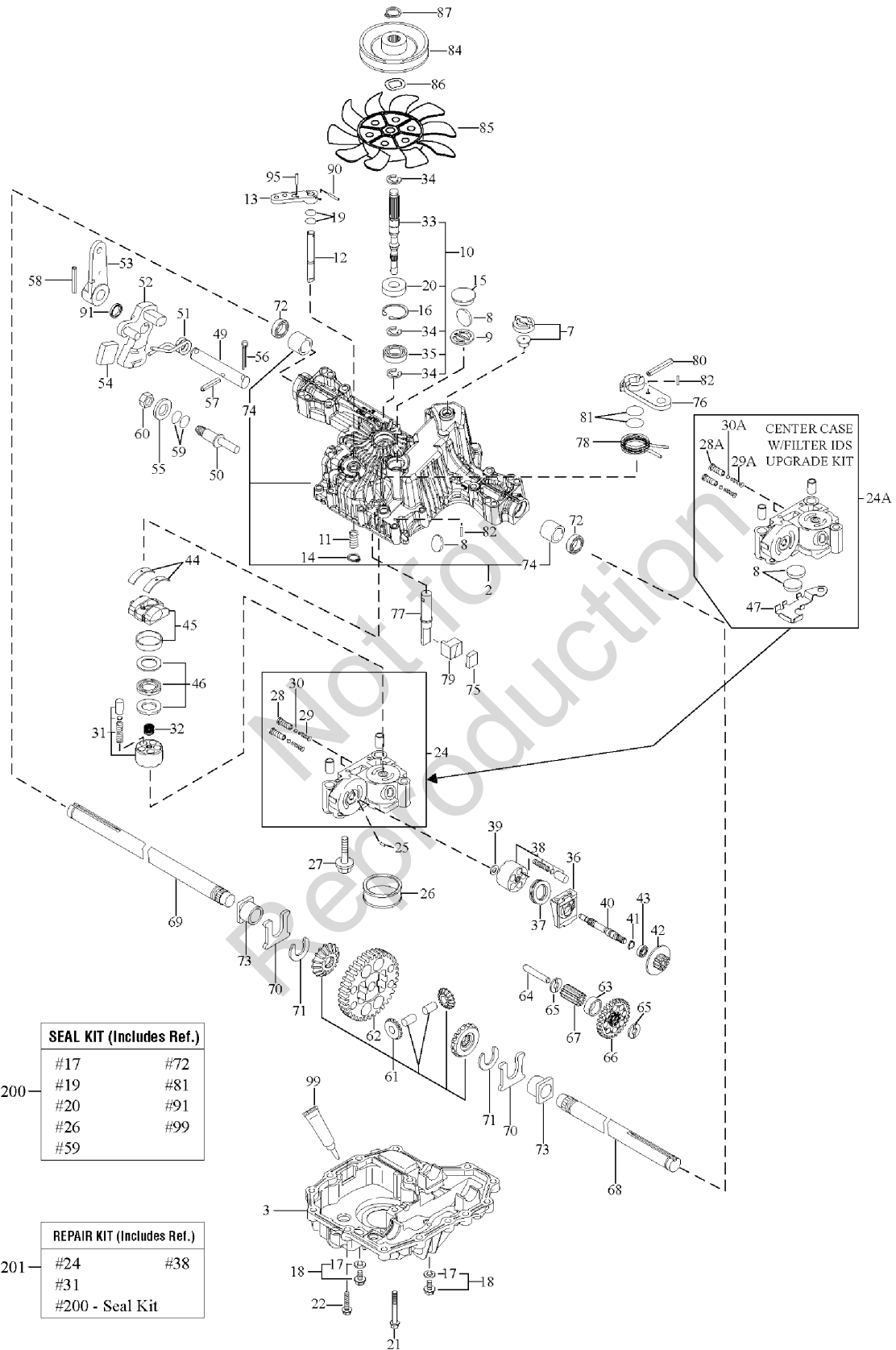
## Transmission SERVICE PARTS - Tuff Torq K46BL

Item	Part No	Qty	Description
1	1729589		* TRANSMISSION, Tuff Torq K46BL
2	-----		KIT, Upper Case
3	-----		LOWER CASE
7	1718052		VENT VALVE 15
8	1724279		MAGNET
9	-----		*MAGNET HOLDER
10	-----		*KIT, Pump Shaft/Bearing
11	-----		*SPRING 25
12	1724281		BYPASS SHAFT A
13	1720418		LEVER, Bypass
14	1718061		RING, Snap, 10
15	1724282		SEALING CAP 30
16	1708650		RING, Snap, C 35
17	1724323		SEAL WASHER 8
18	-----		KIT, Drain Bolt
19	1708691		O-RING, 1A P10A
20	1708651		SEAL TC 153507
21	-----		*SCREW, Tapping, 8 * 55
22	1707789		SCREW, Tapping, 8 * 30
24	-----		*CENTER CASE K W/ 1.2 FILTER IDS KIT
25	1718070		PIN 3 * 9.8
26	-----		FILTER 105
27	1720805		BOLT, 10 * 75
28	-----		*IDS VALVE 1.2
29	-----		*IDS SPRING
30	-----		*IDS FILTER 300
31	-----		*KIT, Cylinder Block (Pump)
32	-----		*SPRING
33	1739892		PUMP SHAFT
34	1718076		E-RING 15
35	1708673		BEARING, 6202C3
36	1718077		MOTOR HOUSING
37	-----		*THRUST BEARING 51106
38	1718079		KIT, Cylinder Block
39	1718084		WASHER, 12 * 24 * 1
40	1724943		MOTOR SHAFT
41	1708672		RING, Snap, S15
42	1724944		BRAKE DISC/MOTOR GEAR (10T)
43	-----		*BEARING, 6202 RSR C3
44	1718089		THRUST METAL
45	-----		*SWASH PLATE CMP
46	1718086		THRUST BEARING K81105
49	-----		*CONTROL SHAFT
50	-----		*FULCRUM

### Footnotes:

\*Note: See your local authorized dealership for Tuff Torq parts and warranty or contact Tuff Torq at [www.tufftorqservices.com](http://www.tufftorqservices.com) (U.S. 1-866-572-3441; Int'l 01-423-585-1977)

# Transmission SERVICE PARTS - Tuff Torq K46BL

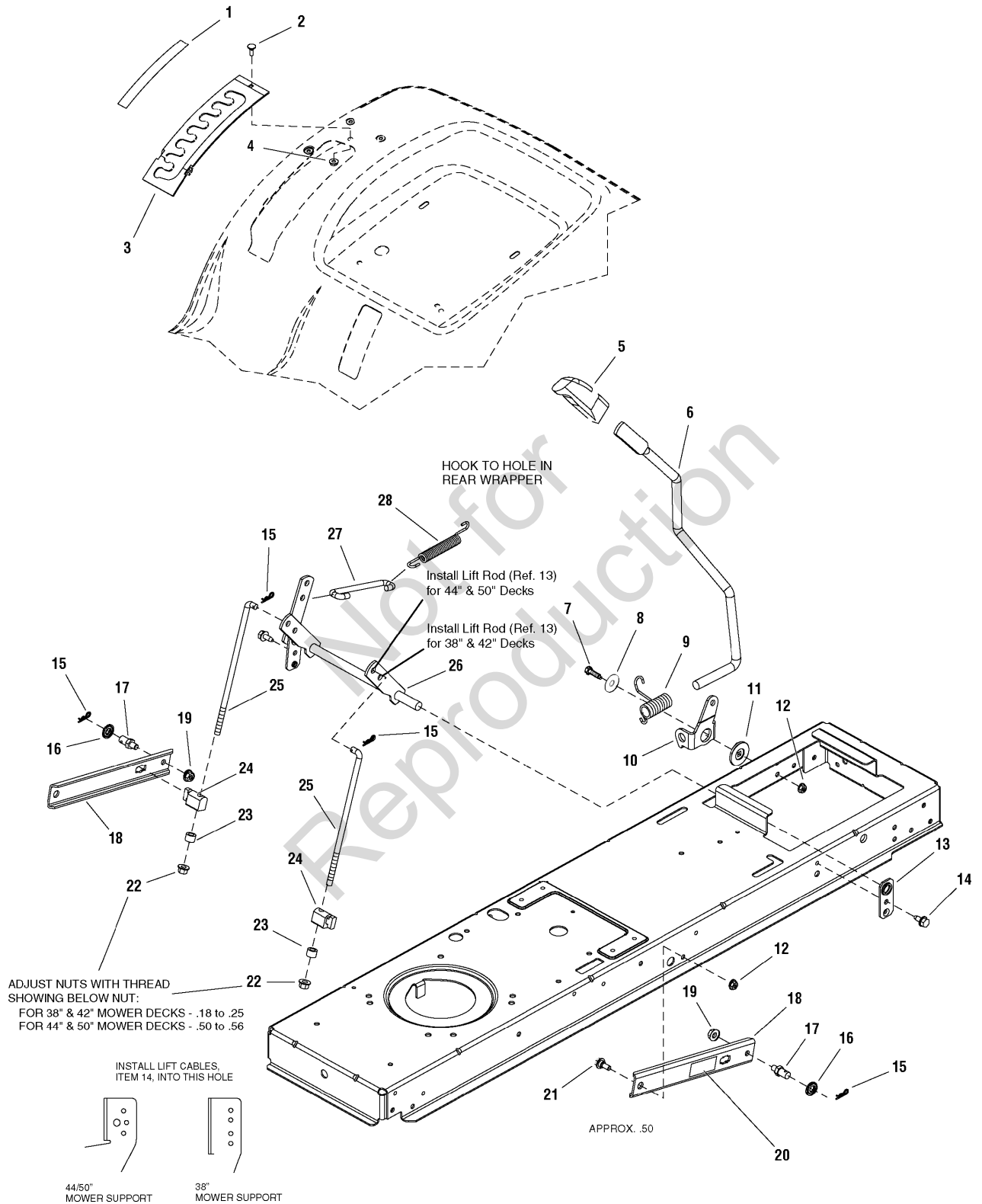


## Transmission SERVICE PARTS - Tuff Torq K46BL

Item	Part No	Qty	Description
51	-----		*SPRING, Torsion
52	-----		*CONTROL ARM A
53	1724347		CONTROL LEVER C
54	-----		*JERKY PLATE
55	1708689		WASHER, 12
56	1724349		COTTER PIN, 1/8 * 3/4
57	1724296		SPRING PIN 6 * 36
58	1718100		ROLL PIN 6 * 40
59	1707879		O-RING 1A P14
60	1708692		NUT 12
61	-----		*KIT, Diff Gear
62	-----		*FINAL GEAR (54T)
63	-----		*FINAL PINION COLLAR
64	-----		*REDUCTION SHAFT
65	1724948		WASHER, 12 * 32 * 3.2
66	1724949		REDUCTION GEAR (38T)
67	-----		*FINAL PINION GEAR (10T)
68	1724303		AXLE SHAFT, Left
69	1724304		AXLE SHAFT, Right
70	1718112		THRUST WASHER
71	1718113		RING 17
72	1718111		SEAL 19 * 32 * 8
73	1718110		BUSHING, 19 * 25
74	-----		*BUSHING, 19.05
75	1724305		BRAKE SHOE
76	1724306		BRAKE LEVER
77	-----		*BRAKE SHAFT
78	-----		*SPRING, Brake Return
79	1724309		BRAKE ACTUATOR
80	1724310		SPRING PIN 5 * 32
81	1708690		O-RING 1A P12
82	1724311		SPRING PIN 4 * 16
84	1732918		PULLEY D
85	1724314		FAN, White
86	1724315		WASHER, Wave
87	1724316		RING, Snap
90	-----		*SPRING PIN 3.0A * 20
91	1724318		OIL SEAL 16 * 22 * .03
95	-----		*SPRING PIN 3.0A * 16
99	-----		*SEALANT
200	1727541		K46 & T40 SEAL KIT (ALL MODELS)
201	-----		*REPAIR KIT K46

### Footnotes:

\*Note: See your local authorized dealership for Tuff Torq parts and warranty or contact Tuff Torq at [www.tufftorqservices.com](http://www.tufftorqservices.com) (U.S. 1-866-572-3441; Int'l 01-423-585-1977)

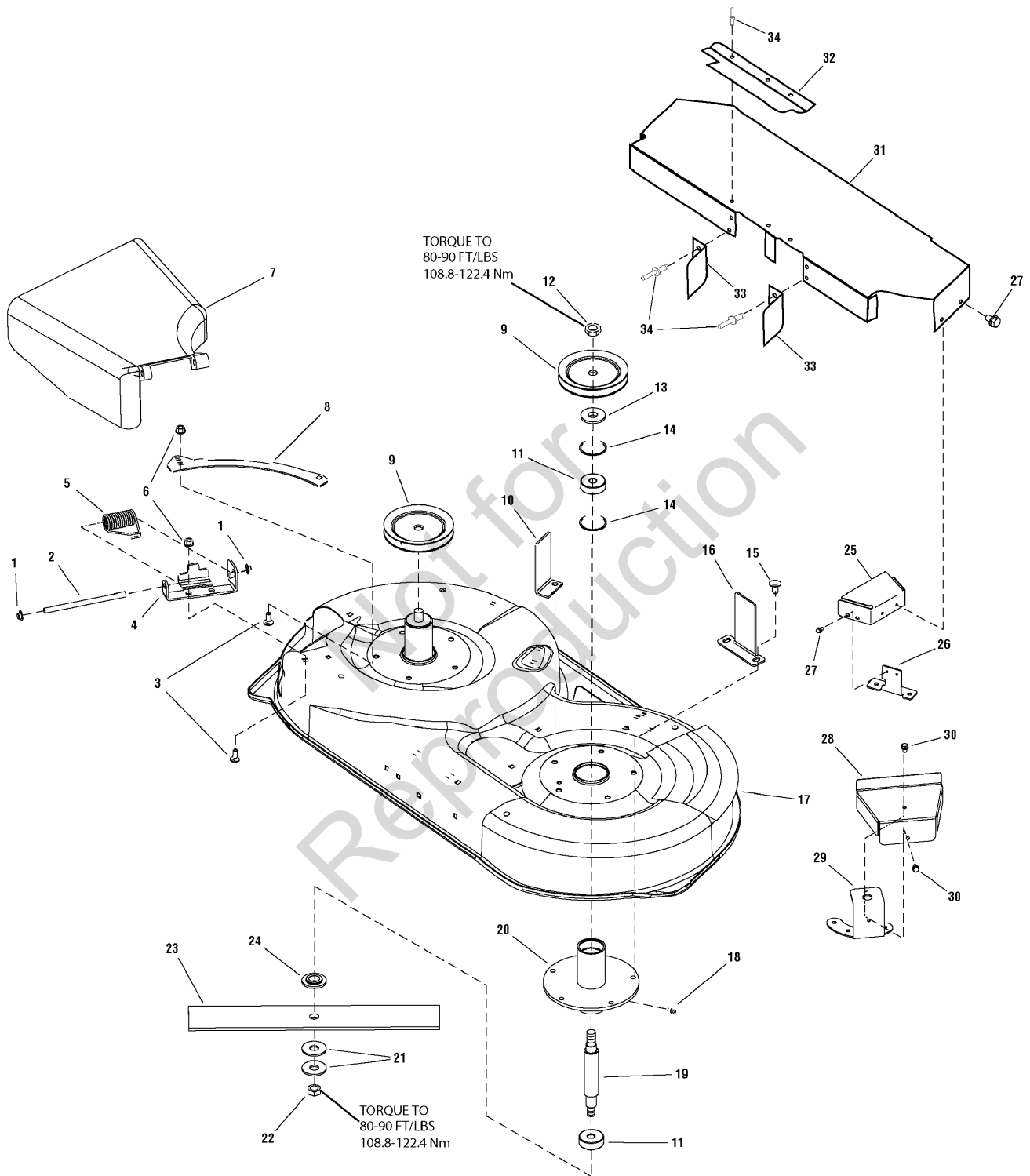


## Lift Group - Manual

Item	Part No	Qty	Description
1	1730264	1	DECAL, Height Of Cut
2	1960252	1	CARRIAGE BOLT, 1/4-20 x 5/8 G5
3	1727985A	1	QUADRANT, Lift Height 12GA
4	1930641	1	NUT, Hex Flange Whiz, 1/4-20
5	1722302	1	GRIP
6	1728070	1	ROD, Lift Handle E-Coat, 17.7 LG
7	1921333	1	CAPSCREW, Hex Head, 5/16-18 x 1
8	1960044	1	WASHER, Plain, 21/64 x 1-1/4
9	1729652	1	SPRING, Torsion, 2.12 LG Black
10	1728990A	1	CLEVIS, Lift 7GA
11	1727935	1	SPACER, Pivot Powdered Metal
12	1931277	3	NUT, Hex, Flange Whizlock, 5/16-18
13	1727911A	1	PLATE, Bearing
14	1930601	2	SCREW, Taptite, 5/16-18 x 5/8
15	1960074	4	CLIP, Spring
16	1960170	2	WASHER, 1/2
17	2721135	2	PIN, Threaded Shoulder
18	1731417A	2	ARM, Lift Rear 10GA
19	1928352	2	NUT, Hex, Flange, Whizlock, 5/16-18 x 1/2
20	1732070	2	DECAL, CAUTION! Pinch Point
21	1732426	2	BOLT, Shoulder
22	1960687	2	NUT, Hex Flange, 3/8-16 ESNA
23	1656397	2	SPACER (Used on 38" & 42" Mower Decks)
23	1666294	2	SPACER (Used on 44" & 50" Mower Decks)
24	1731894	2	TRUNNION, Powdered Metal
25	1727955	2	ROD, Lower Life, 10.00 LG
26	1727951A	1	SHAFT ASSEMBLY, Lift
27	1727954	1	ROD, Lift, 5.43 LG
28	1731939	1	SPRING, Extension 5.10 LG Black (Used on 44" & 50" Mower Decks)

### Footnotes:

# 38" & 42" Mower Deck - Housing, Arbors & Blades Group



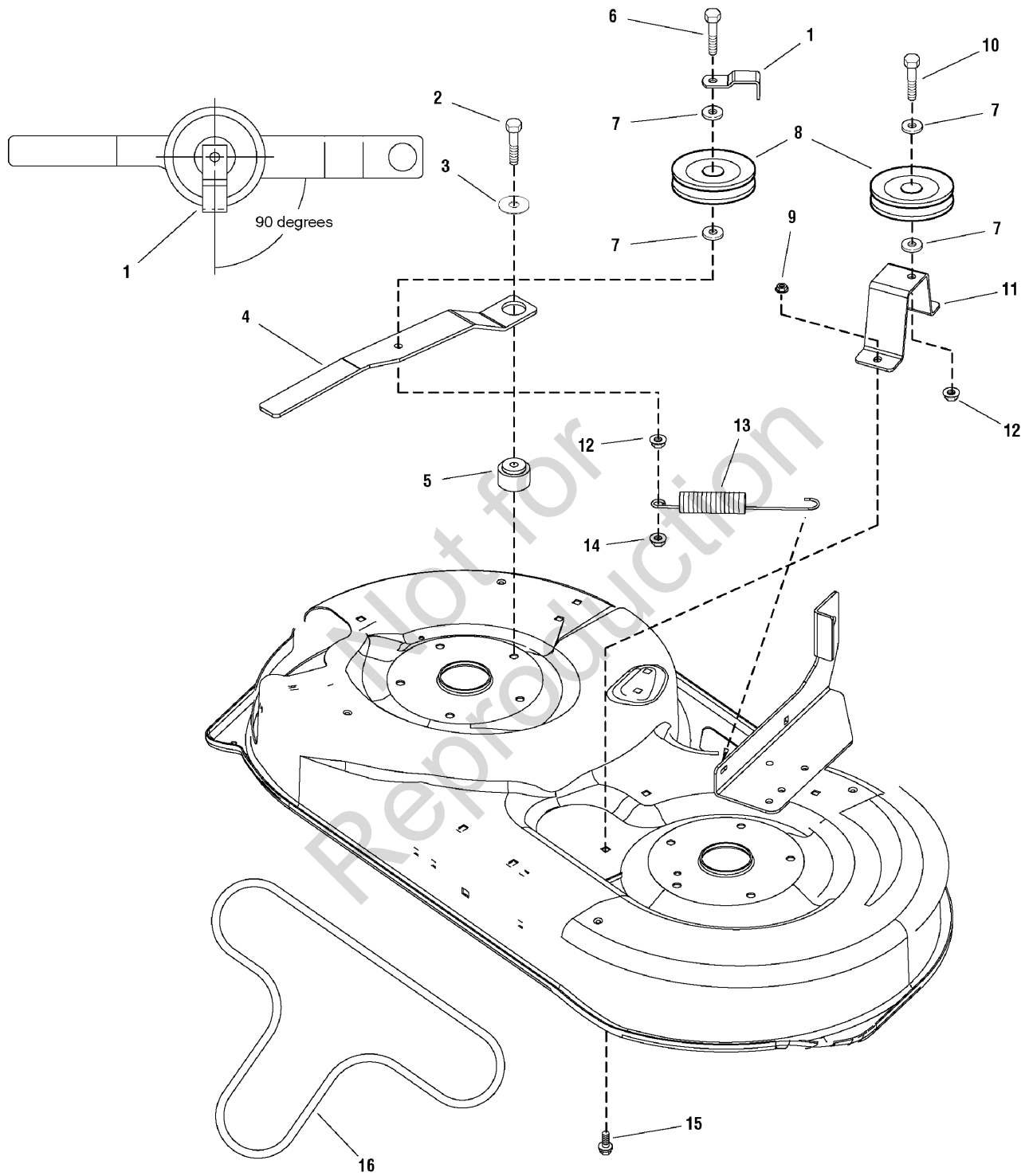


## 38" & 42" Mower Deck - Housing, Arbors & Blades Group

Item	Part No	Qty	Description
1	1960093	2	NUT, Push, 3/8
2	721371	1	ROD, Deflector
3	1931333	6	BOLT, Carriage, 5/16-18 x 3/4
4	721369A	1	BRACKET, Hinge 9GA
5	720154	1	SPRING, Torsion
6	1931277	6	NUT, Hex, Flange Whizlock, 5/16-18
7	721339	1	DEFLECTOR & SUPPORT ASSEMBLY, Chute Riveted
8	720911A	2	PLATE, Rear (38" Only)
8	721083A	2	PLATE, Rear (42" Only)
9	1732952	2	PULLEY, 5.25 (38" Only)
9	1732354	2	PULLEY, 5.50 (42" Only)
9	1734064	2	PULLEY, 7.00 (42" Only) (CE/Export)
10	1731209A	1	UPSTOP, "L" 10GA
11	2108202	2	BEARING, Upper
12	1922014	2	NUT, Hex Lock, ESNA Light, 5/8-18, Thin
13	7072440	2	SPACER, Pulley, 38" Deck
14	7012491	2	RETAINING RING, Extension, 1-3/4
15	1923683	10	SCREW, Hex, Washer Head, Taptite, 3/8-16 x 3/4
16	1732555A	1	UPSTOP, "L" 10GA (38" Only)
17	1687207	1	HOUSING, 42" (42" Only)
17	1687206	1	HOUSING, 38" (38" Only)
18	1704314	1	FITTING, Grease
19	7072537	1	SHAFT, Spindle, 38" Deck
20	1731372Z	1	TUBE & PLATE ASSEMBLY, Spindle
21	7024467	4	WASHER, Belleville
22	7091633	2	NUT, Hex 9/16-18
23	1731898A	2	BLADE, Mower 42" (42" Only)
23	1731914	2	BLADE, Mower 38" (38" Only)
24	1731917	2	WASHER, Spindle Blade Powdered Metal
25	1733888A	2	COVER, Spindle (38" Only) (CE/Export)
26	1733889A	3	SUPPORT, Spindle Cover (38" Only) (CE/Export)
27	1925003	6	SCREW, Taptite 1/4-20 x 1/2 (38" Only) (CE/Export)
28	1734035A	2	COVER, Pulley (42" Only) (CE/Export)
29	1734039A	2	SCREW, Taptite 5/16-20 x 1/2 (42" Only) (CE/Export)
30	1924856	4	LOCKWASHER, Interior Tooth 5/8 (42" Only) (CE/Export)
31	1736021A	1	GUARD, Pulley (38" - France Only)
32	1736022A	1	GUARD, Belt (38" - France Only)
33	1736024A	2	GUARD, Belt (38" - France Only)
34	1675044	7	RIVET, Pop (38" - France Only)

### Footnotes:

# 38" & 42" Mower Deck - Belt, Idler Arm & Hitch Group



## 38" & 42" Mower Deck - Belt, Idler Arm & Hitch Group

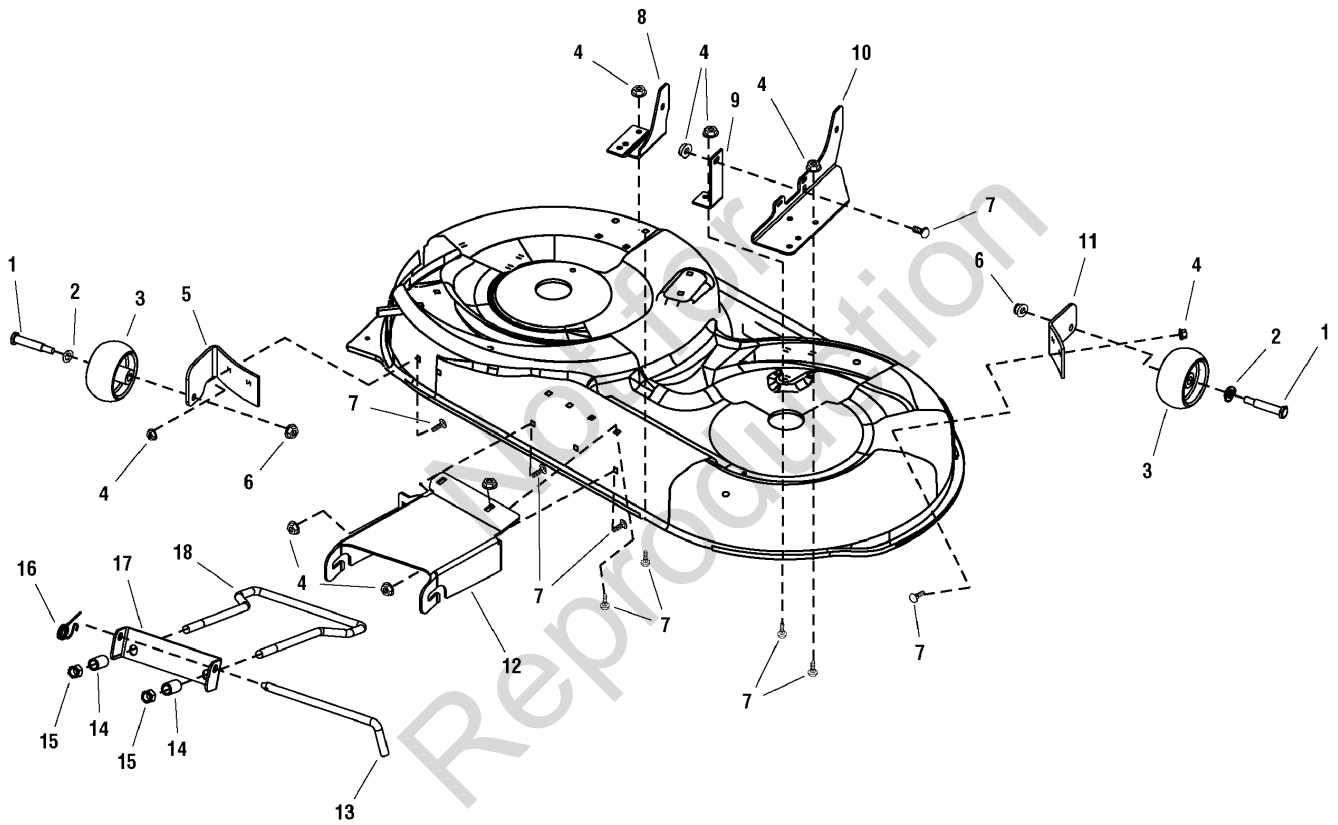
---

Item	Part No	Qty	Description
1	1677135A	1	GUARD, Spring (Used on Kevlar Belts)
1	1732884A	1	GUARD, Spring (Used on A-Wedge Aramid Belts)
2	2860361	1	CAPSCREW, Hex Washer Head, Taptite, 3/8-16 x 2
3	1924356	1	WASHER, Plain, 13/32 x 1-1/2 x 1/8
4	1731944A	1	ARM
5	1729007	1	SPACER, 0.387 ID x 1-1/2 OD x 1.04 LG Powdered Metal
6	1922130	1	CAPSCREW, Hex Head, 3/8-16 x 2-1/4
7	1922755	4	WASHER, 3/8
8	7018574	2	IDLER, Flat
9	1931277	2	NUT, Hex, Flange Whizlock, 5/16-18
10	1921971	1	CAPSCREW, Hex Head, 3/8-16 X 1-3/4
11	1731911A	1	SUPPORT, Idler
12	1931211	2	NUT, Whizlock, 3/8-16
13	1731311	1	SPRING, Extension 07.75 LG Black
14	1930645	1	NUT, 3/8-16, Hex Flange MAC Locking Large, Black
15	1931333	2	BOLT, Carriage, 5/16-18 x 3/4
16	1732204	1	V-BELT, 91.10 LG Kevlar (Used on 38" Domestic Models)
16	1732205	1	V-BELT, 94.45 LG Kevlar (Used on 42" Domestic Models)
16	1733217	1	V-BELT, 91.10 LG A-Wedge Aramid (Used on 38" CE/Export Models)
16	1732955	1	V-BELT, 94.45 LG A-Wedge Aramid (Used on 42" CE/Export Models)

Not for  
Reproduction

### Footnotes:

# 38" & 42" Mower Deck - Height Adjustment & Roller Bar Group

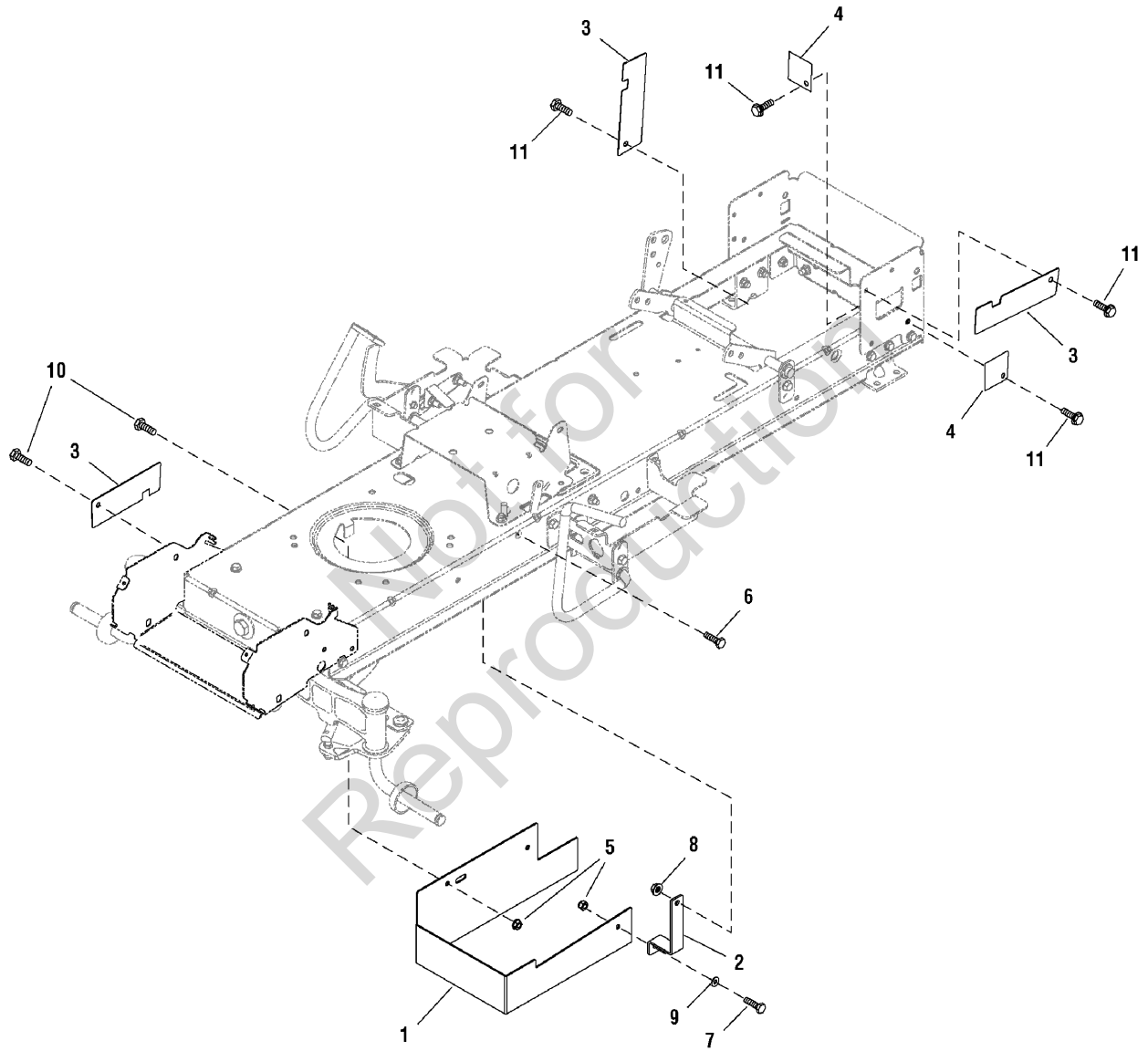


## 38" & 42" Mower Deck - Height Adjustment & Roller Bar Group

Item	Part No	Qty	Description
1	2108765	2	BOLT, Rear Wheel (42" Only)
2	1960170	2	WASHER, 1/2 (42" Only)
3	1714760	2	WHEEL, Gauge (42" Only)
4	1931277	11	NUT, Hex, Flange Whizlock, 5/16-18 (38" Only)
4	1931277	13	NUT, Hex, Flange Whizlock, 5/16-18 (42" Only)
5	1731402A	1	SUPPORT, Gauge Wheel RH 7 GA (42" Only)
6	1960687	2	NUT, Hex Flange, 3/8-16 ESNA (42" Only)
7	1931333	11	BOLT, Carriage, 5/16-18 x 3/4 (38" Only)
7	1931333	13	BOLT, Carriage, 5/16-18 x 3/4 (42" Only)
8	1730072D	1	SUPPORT, Mower RH
9	1730201D	1	BRACE, Mower Support (38" Only)
10	1730071D	1	SUPPORT, Mower LH
11	1731403A	1	SUPPORT, Gauge Wheel LH 7 GA (42" Only)
12	1731967D	1	HITCH, Front 38" Mower
12	1731966D	1	HITCH, Front 42" Mower
13	1731414	1	PIN, Hitch
14	1679166	2	SPACER, .532 ID x 3/4 OD x 1-1/4 LG Yellow
15	1960379	2	NUT, ESNA, Lock, 1/2-13 (Thin)
16	2176012	1	CLIP, Pin, Safety
17	1730221A	1	HANGER, Front Mower
18	1730097	1	ROD, Bail Mowers Yellow

Not for  
Reproduction

### Footnotes:



## French Guard Group - 38"

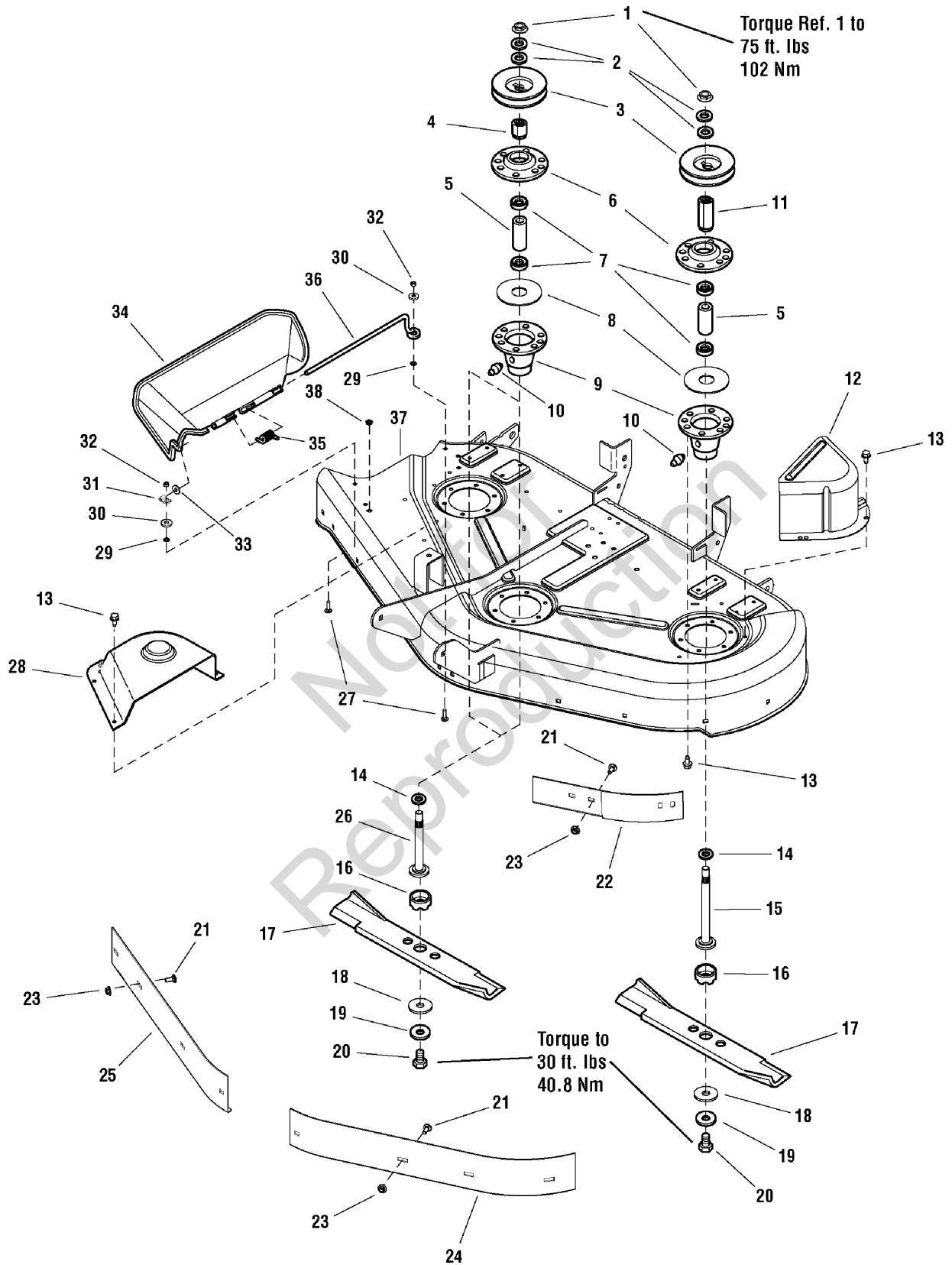
---

Item	Part No	Qty	Description
1	1736020BM	1	GUARD, Clutch
2	1736023BM	1	SUPPORT, Guard
3	1736025BM	3	GUARD, Rear Pulley
4	1737850BM	2	GUARD, Rear
5	1931277	2	NUT, Hex Flange, 5/16-18
6	2860664	1	CAPSCREW, Dog Point, SEMS, 1/4-20 x 3/4
7	1921958	1	CAPSCREW, Hex Head, 1/4-20 x 1/2
8	1920397	2	NUT, Hex Lock ESNA, 1/4-20
9	1921319	1	WASHER, 1/4
10	1921332	2	CAPSCREW, Hex, 5/16-18 x 3/4
11	1930591	4	CAPSCREW, Hex Head, Flange Whiz Lock, 5/16-18 x 3/4

Not for  
Reproduction

### Footnotes:

# 44" Mower Deck - Housing, Arbors & Blades Group



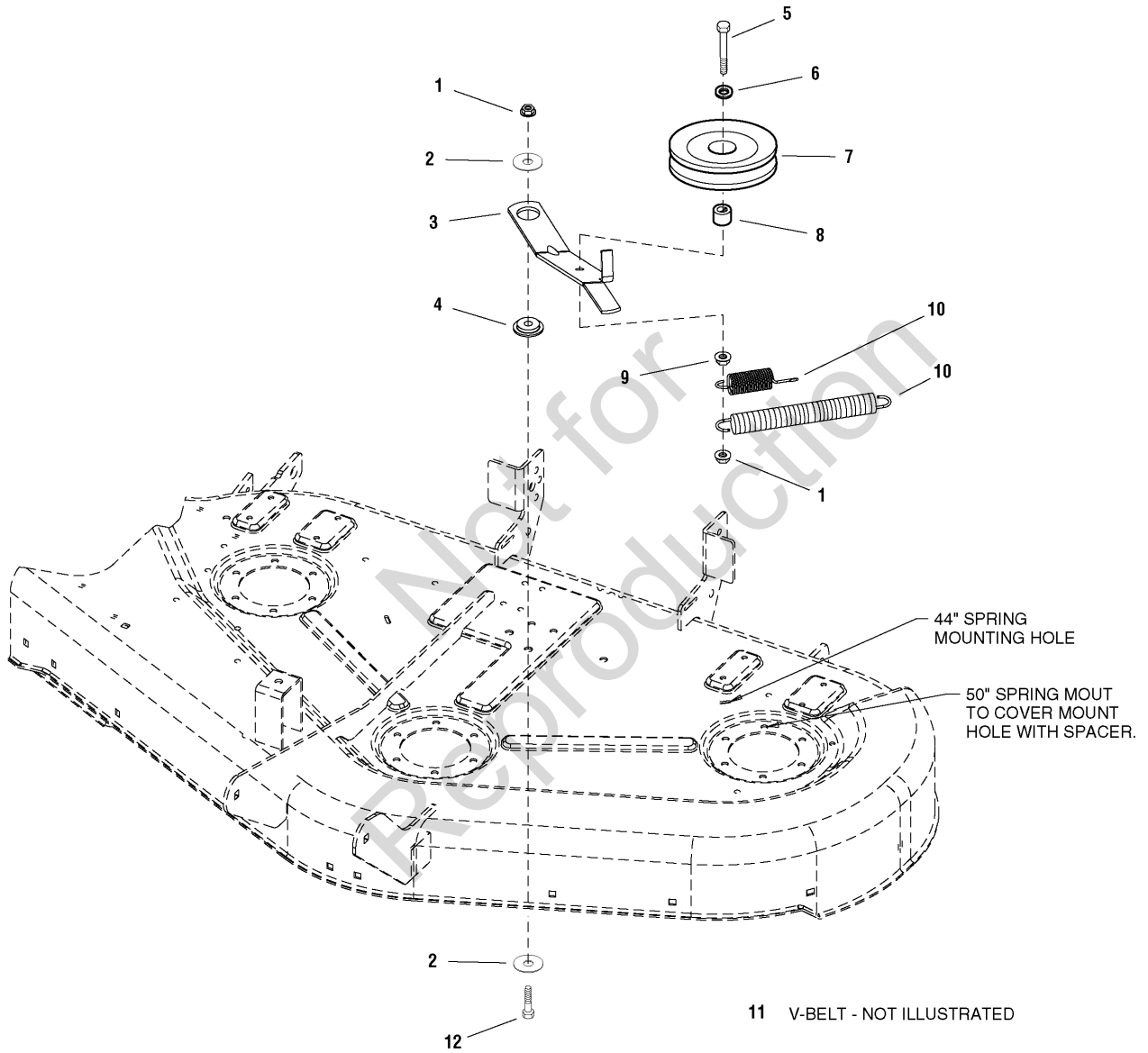


## 44" Mower Deck - Housing, Arbors & Blades Group

Item	Part No	Qty	Description
1	1714419	3	NUT, Hex, Flange, 9/16-8
2	1713675	6	WASHER, Belleville
3	1713098	3	PULLEY, RH Arbor & LH Arbor, 4-1/4
4	1713613	2	HUB, Pulley, RH (Middle)
5	1713204	3	SPACER
6	1713199A	3	COVER, Arbor Housing
7	1705897	6	BEARING
8	1707335	3	GASKET, Foam
9	1713338A	3	HOUSING, Arbor Bottom, w/Lube Fitting
10	1704314	1	FITTING, Grease
11	1713616	1	HUB, Adapter, LH
12	1720560A	1	COVER, Arbor
13	1664847	29	CAPSCREW, Hex Head, Taptite, 5/16-18 x 3/4
14	1713619	3	WASHER
15	1713612	1	SHAFT, Arbor
16	1713196	3	SHIELD, Grass, Lower
17	1704100	3	BLADE, 44"
18	1713089	3	WASHER, Hex
19	1656916	3	WASHER, Spring
20	2823471	3	CAPSCREW, Hex Head, 7/16-14 x 1-1/4
21	1931333	2	BOLT, Carriage, 5/16-18 x 3/4
21	1931333	8	BOLT, Carriage, 5/16-18 x 3/4 (CE Only)
22	1724538A	1	BAFFLE, Anti-Blowout
23	1931277	2	NUT, Hex, Flange Whizlock, 5/16-18
23	1931277	8	NUT, Hex, Flange Whizlock, 5/16-18
24	1716879A	1	BAFFLE, Blowout LH, 44" (CE Only)
25	1731990A	1	BAFFLE, Blowout RH, 44" (CE Only)
26	1713609	2	SHAFT, Arbor, RH
27	1960698	2	CARRIAGE BOLT, 1/4-20 x 1, Black
28	1715673	1	COVER, Arbor, RH
29	1960518	2	NUT, Push On
30	1960353	2	WASHER, Plain, 1/4 (6 Total for Export)
31	1704873	1	CLAMP
32	1920397	2	NUT, Hex Lock, ESNA, 1/4-20
33	1919326	1	WASHER, Flat, 5/16
34	1705449	1	DEFLECTOR, Plastic
35	1723938	1	SPRING
36	1706709A	1	ROD, Deflector, Front
37	1729597D	1	HOUSING ASSEMBLY, 44" Mower Frame Mount
38	1705115	1	PLUG, Plastic (Not Shown)

### Footnotes:

# 44" & 50" Mower Deck - Belt, Idler Arm & Hitch Group



## 44" & 50" Mower Deck - Belt, Idler Arm & Hitch Group

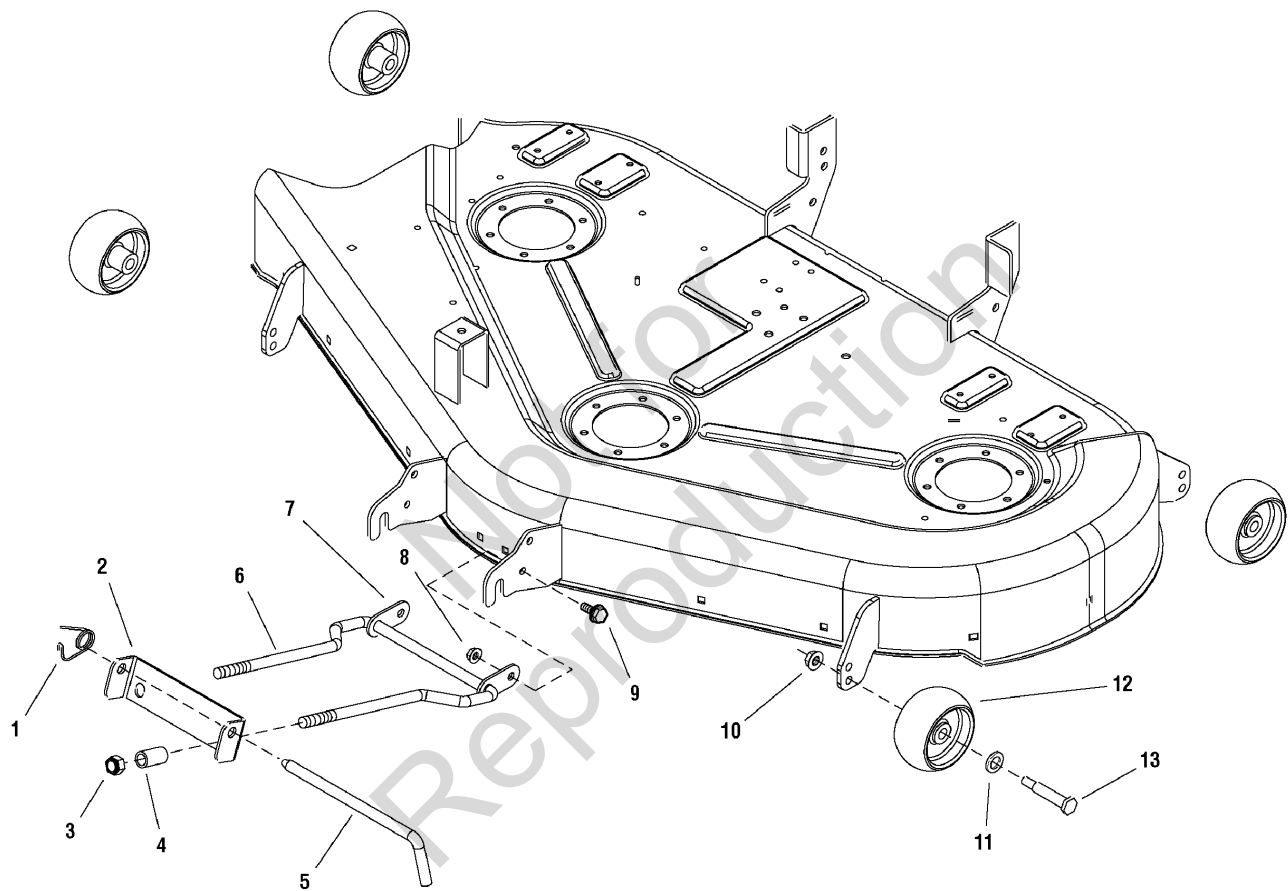
---

Item	Part No	Qty	Description
1	1960339	2	NUT, Hex Flange Center Locking, 3/8-16
2	1924356	2	WASHER, Plain, 13/32 x 1-1/2 x 1/8
3	1730090A	1	ARM, Idler 7GA
4	1714255	1	SPACER
5	1921972	1	CAPSCREW, Hex Head, 3/8-16 x 2-1/2
6	1924940	1	WASHER, 3/8
7	2171247	1	PULLEY ASSEMBLY
8	1667812	1	SPACER
9	1931211	1	NUT, Whizlock, 3/8-16
10	1656936	1	SPRING, Extension, Idler Arm (44" Mower Deck)
10	1715435	1	SPRING, Extension, Idler Arm (50" Mower Deck)
11	1729627	1	V BELT, Arbor Drive, 44"
11	1732409	1	V BELT, Arbor Drive, 44" (CE Only)
11	1703466	1	V-BELT, Arbor Drive, 50"
11	1732957	1	V-BELT, Arbor Drive, 50" Deck, 126.14" LG HA used on 2690580
12	1922605	1	CAPSCREW, Hex Head, 3/8-16 x 1-1/4, G8

Not for  
Reproduction

### Footnotes:

# 44" & 50" Mower Deck - Height Adjustment & Roller Bar Group



## 44" & 50" Mower Deck - Height Adjustment & Roller Bar Group

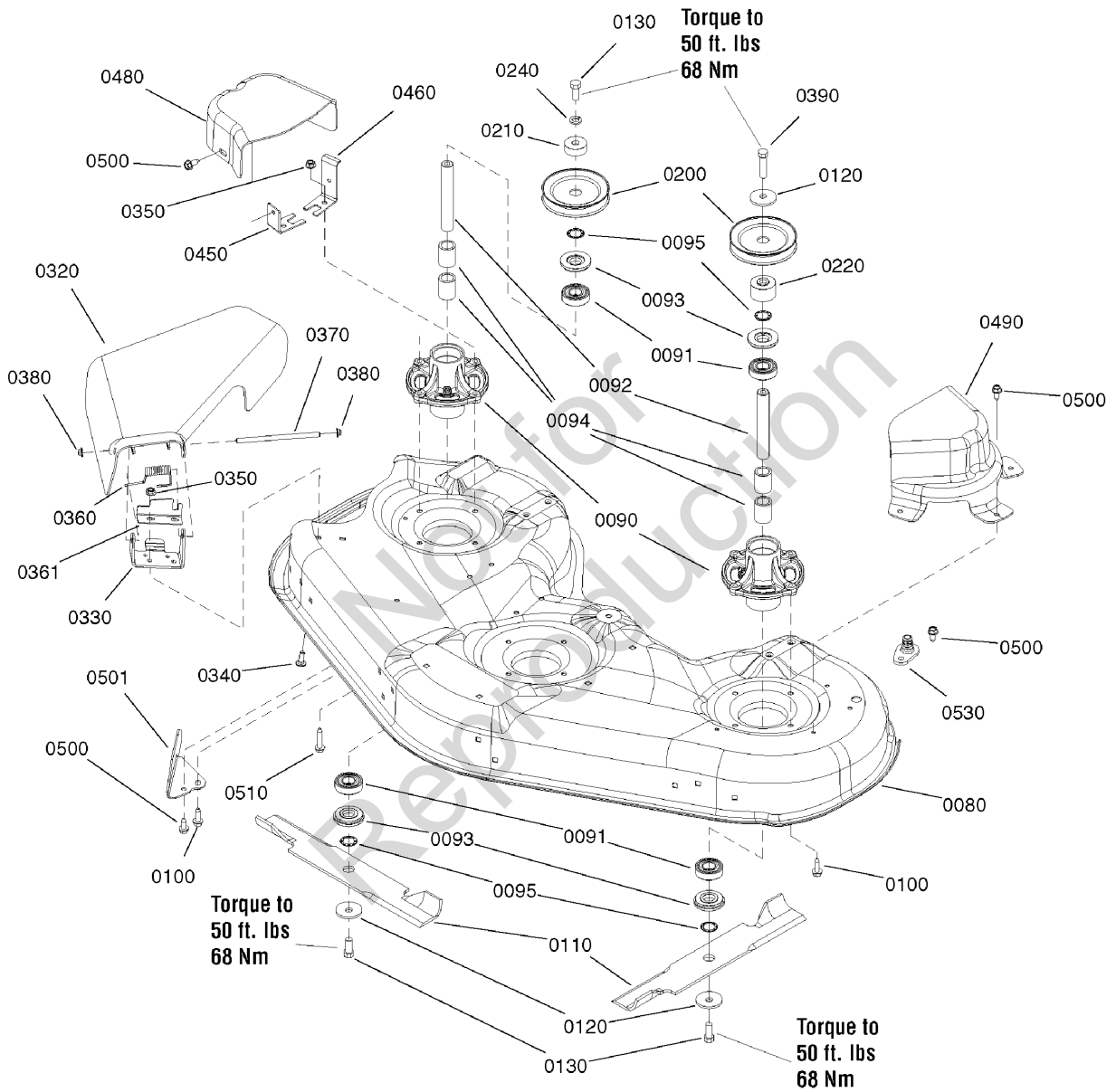
---

Item	Part No	Qty	Description
1	2176012	1	CLIP, Pin, Safety
2	1730221A	1	HANGER, Front Mower
3	1960379	2	NUT, ESNA, Lock, 1/2-13 (Thin)
4	1679166	2	SPACER
5	1731414	1	PIN, Hitch
6	1730097	1	ROD, Bail Mowers Yellow
7	1731899A	2	PLATE, PIVOT Lock 10 GA
8	1931277	2	NUT, Hex, Flange Whizlock, 5/16-18
9	1930591	2	CAPSCREW, Hex Head, Flange Whiz Lock, 5/16-18 x 3/4
10	1960687	4	NUT, Hex Flange, 3/8-16 ESNA
11	1960170	4	WASHER, 1/2
12	1714760	4	WHEEL, Gauge
13	2108765	4	BOLT, Rear Wheel

Not for  
Reproduction

### Footnotes:

# 46" Mower Deck - Housing, Arbor & Blades Group

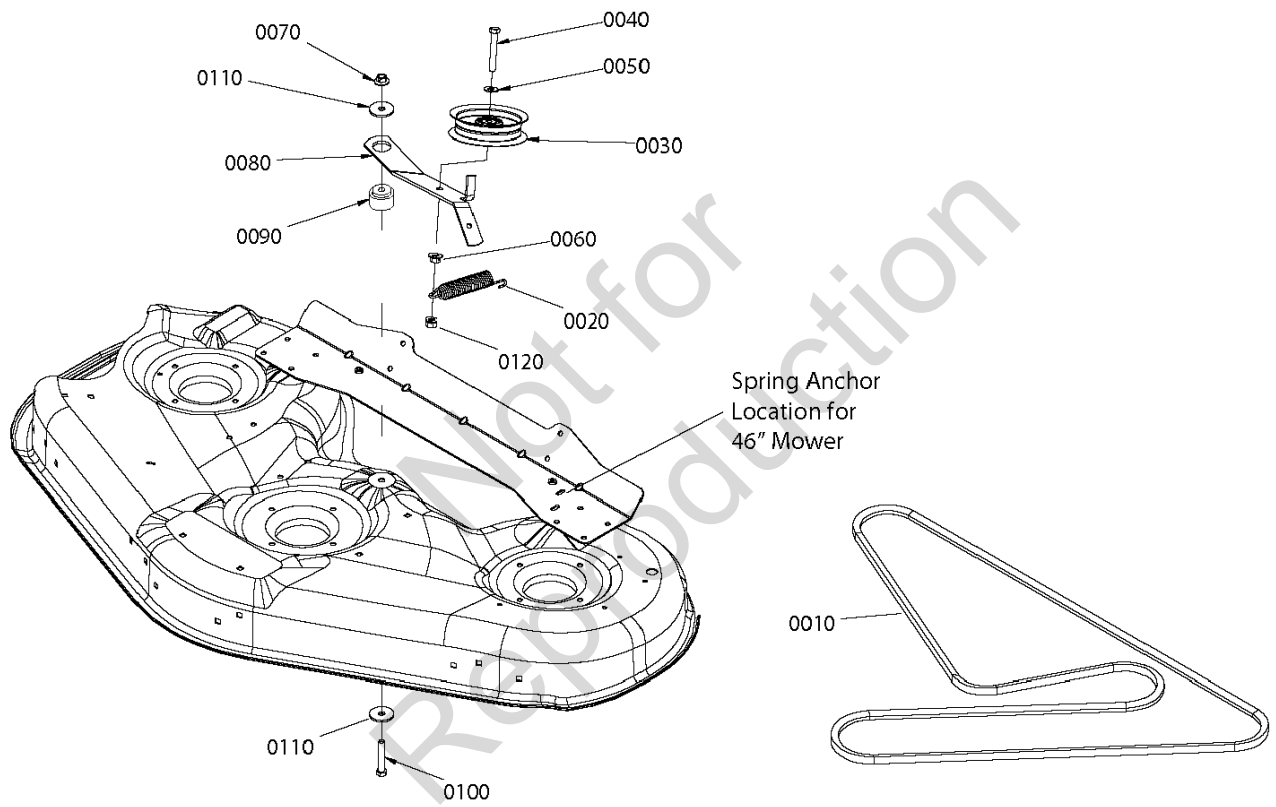


## 46" Mower Deck - Housing, Arbor & Blades Group

Item	Part No	Qty	Description
0080	1735734D	1	HOUSING, 46" MOWER
0090	1735573	3	HOUSING, SPINDLE, CAST ALUM MACH'D W/FTG
0091	1735399	6	BEARING, BALL 20MM 46" MWR
0092	1735326	3	SHAFT, SPINDLE 20MM DIA 134.60MM LG
0093	1735323	6	SHIELD, ARBOR 2.050OD 46" MWR
0094	1735328	6	SPACER, BEARING PWDR MTL 46" MWR
0095	1960766	6	RING, SELF LOCKING 46" MWR
0100	1960373	10	CAPSCREW, Hex Washer Head Taptite, 5/16-18X1.0 BLK
0110	1739889	3	BLADE, MOWER 16.13" LG 46" MWR
0120	1656916	4	WASHER, SPRING 0.475IDX1.75ODX.156TH BLK
0130	1920676	5	CAPSCREW, HEX HD 7/16-14X1.000 G5 BLK
0200	1735686	3	PULLEY, 4.6 OD 11GA SPLIT 46" MWR
0210	1735579	2	SPACER, LOWER DRIVE 46" MWR
0220	1736445	1	SPACER, PULLEY P'MTL 46" MWR ZTR
0240	1918199	2	LOCKWSHER, SPRING .438 BLK
0320	1735447	1	DEFLECTOR, DISCH PLASTIC 46/52 DECKS
0330	1736365A	1	PIVOT, HINGE
0340	1931333	2	BOLT, RD HD SH SQ NK 5/16-18X0.750 G5 BLK
0350	1931277	4	NUT, HEX FLANGE 5/16-18, WHIZ LK SM, BLK
0360	1736364	1	SPRING, TORS DEFLECTOR 2.16LG 46" MWR
0361	1737359A	1	SHIELD, HINGE
0370	1736366	1	ROD, DEFLECTOR, YELLOW ZINC
0380	7012542	2	NUT, PUSH, 5/16 BZ
0390	1923027	1	CAPSCREW, HEX HD 7/16-14X1.750 G5 BLK
0450	1736518A	1	BRKT, BELT COVER, FRONT
0460	1736519A	1	BRKT, BELT COVER, REAR
0480	1735752	1	COVER, BELT BLACK POLY RH 46 + 52" MWRS
0490	1735750	1	COVER, BELT LH BLACK PLASTIC 46" MOWER
0500	1664847	7	CAPSCREW, Hex Washer Head Taptite, 5/16-18X0.750 BLK
0501	1737279A	1	BAFFLE, PINCHOFF
0510	1930600	2	CAPSCREW, Hex Washer Head Taptite, 5/16-18X1.500 BLK
0520	1736898	1	WASHOUT PORT-CONNECTOR 46+52" BLK POLY
0530	1735716	1	ADAPTER, WASHOUT PORT 46+52" PLASTIC

### Footnotes:

# 46" Mower Deck - Clutch Group





## 46" Mower Deck - Clutch Group

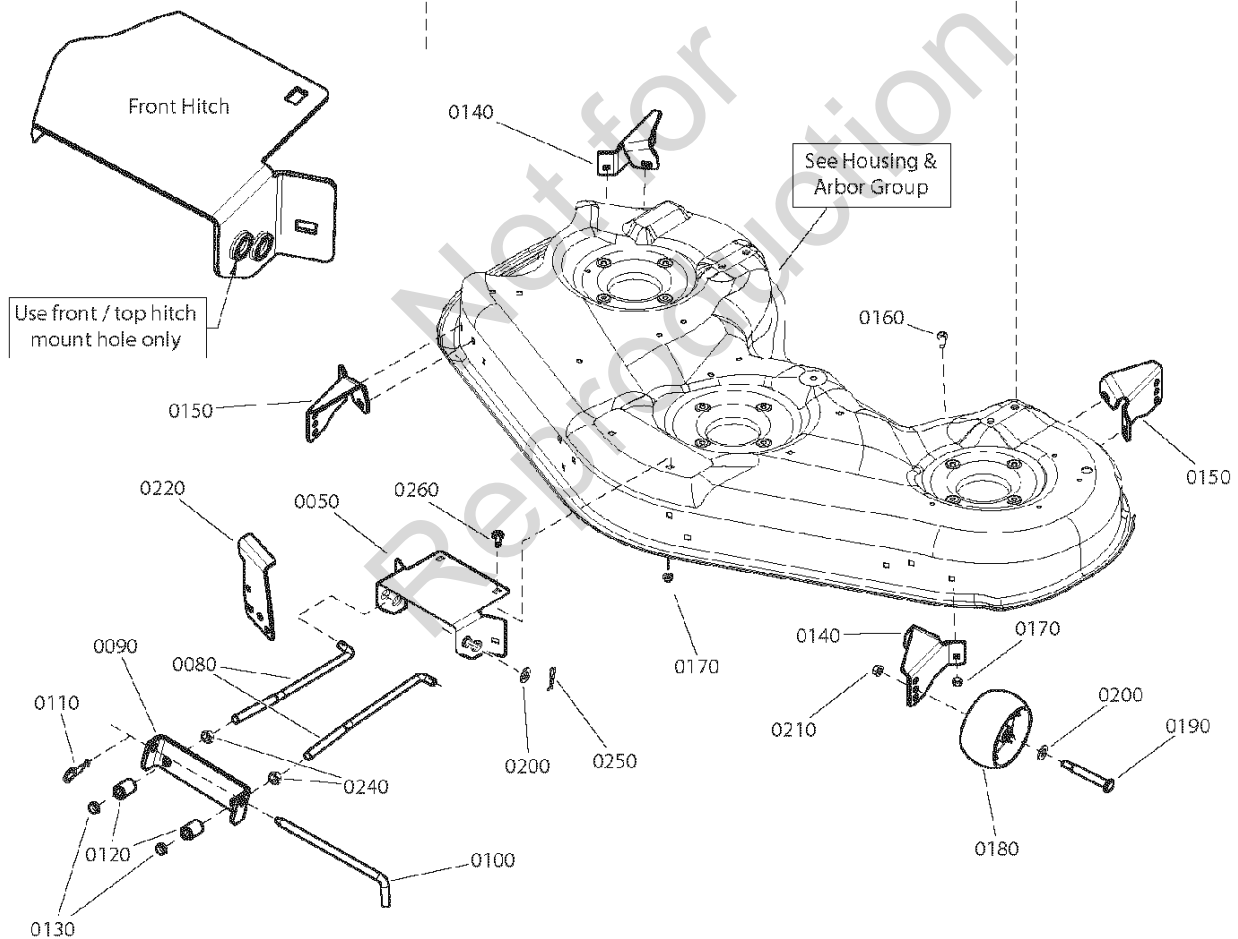
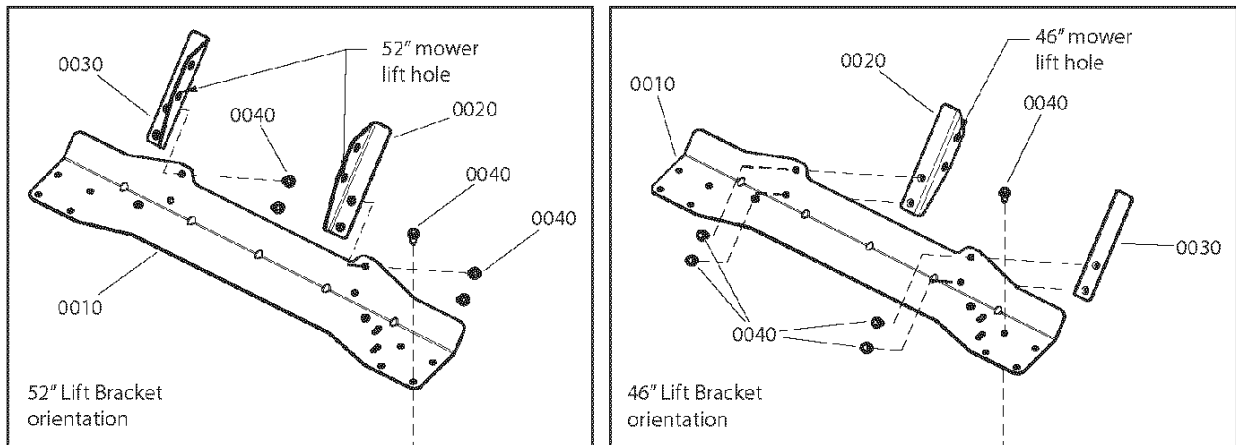
---

Item	Part No	Qty	Description
0010	1732956	1	V-BELT, HA 118.00 LG A-WEDGE ARAMID
0020	1715772	1	SPRING, EXTN 0.987ODX 05.25 LG .112 WIRE
0030	1736540	1	PULLEY, IDLER 46, 52" MWRS
0040	1933685	1	CAPSCREW, HEX HD 3/8-16X2.500 G5 FT BLK
0050	1924940	1	WASHER, 0.375(0.41IDX0.87ODX.08THK) BLK
0060	1931211	1	NUT, HEX FLANGE 3/8-16 WHIZ LK SMALL BLK
0070	1960339	1	NUT, HEX FLANGE 3/8-16 MAC LK LARGE BLK
0080	1736551A	1	ARM, IDLER
0090	1729007	1	SPACER, 0.387IDX1.50 ODX1.04 LG PM YELLOW
0100	1923701	1	CAPSCREW, HEX HD 3/8-16X2.000 G5 BLK
0110	1924356	2	WASHER, 0.375(0.41IDX1.50ODX.12THK) BLK
0120	7091585	1	NUT, Center Lock, 3/8-16 YZ

Not for  
Reproduction

### Footnotes:

# 46" Mower Deck - Height Adjustment Group



## 46" Mower Deck - Height Adjustment Group

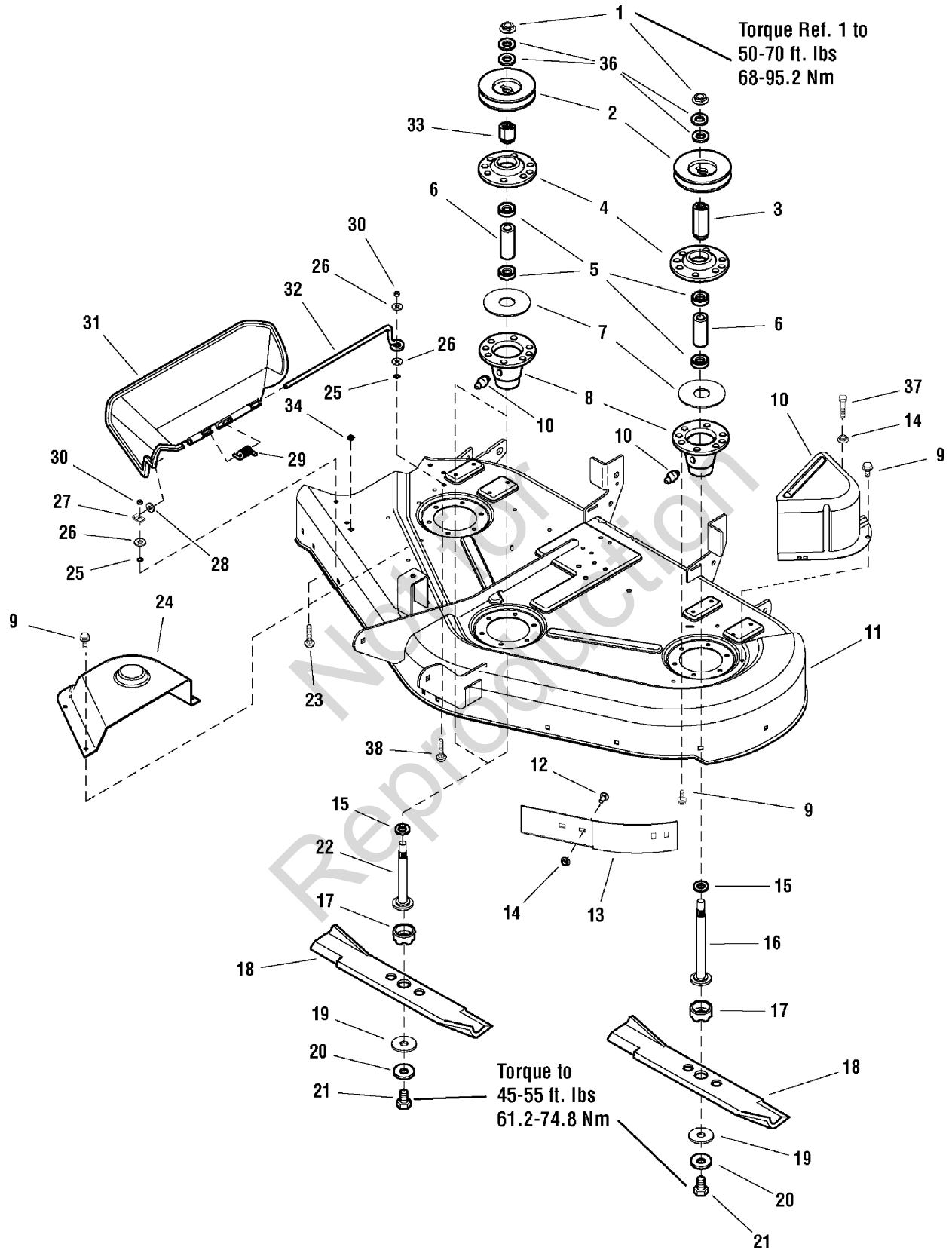
---

Item	Part No	Qty	Description
0010	1736070A	1	SUPPORT, Rear Cross
0020	1736072A	1	BRACKET, Rear Mower Pickup
0030	1736073A	1	BRACKET, Rear Mower Pickup
0040	1960373	8	CAPSCREW, Hex Washer Head, Taptite, 5/16-18x 1
0050	1736071A	1	HITCH, Front
0080	1736081	2	ROD, Front Bail
0090	1737059A	1	HANGER, Front Mower
0100	1731414	1	ROD-LATCH, 1/2 x 9" Long, 42"
0110	2176012	1	RETAINER, Pin Spring
0120	1679166	2	SPACER, 1/2 ID x 7/8 OD x 1-3/16 Long
0130	1960379	2	NUT, Hex Lock, ESNA, 1/2-13
0140	1736074A	2	BRACKET, Gauge, Wheel, R.H.
0150	1736075A	2	BRACKET, Gauge, Wheel, L.H.
0160	1931334	13	BOLT, Carriage, 5/16-18 x 7/8, G5
0170	1931277	13	NUT, Hex Flange, Whiz Lock, 5/16-18
0180	1736896	4	WHEEL, Gauge, 5" Dia.
0190	1736539	4	BOLT, Shoulder, 3/8-16 X 3-13/32
0200	1960170	6	WASHER, 1/2 x 1 OD
0210	1960687	4	NUT, Hex Flange, ESNA, 3/8-16
0220	1736991A	1	UP STOP
0240	1913744	2	NUT, Hex Jam, 1/2-13
0250	1960074	2	CLIP, Hair Pin, 1-5/8

Not for  
Reproduction

### Footnotes:

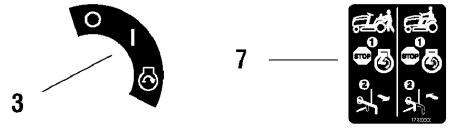
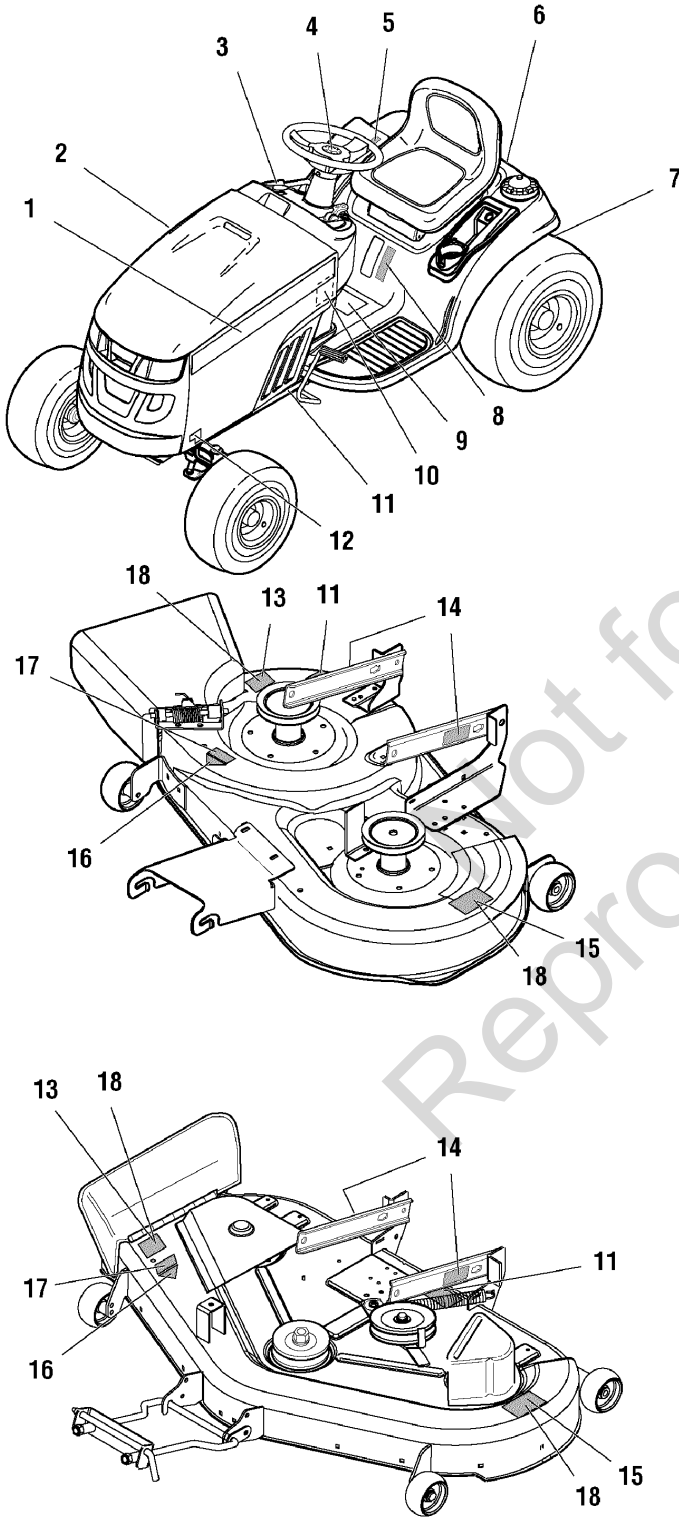
**50" Mower Deck - Housing, Arbors & Blades Group**



## 50" Mower Deck - Housing, Arbors & Blades Group

Item	Part No	Qty	Description
1	1714419	3	NUT, Hex Flange 9/16-18
2	1732951	3	PULLEY
3	1713616	1	HUB
4	1713199A	3	HOUSING, Arbor Top
5	1705897	6	BEARING, Ball 11/16 x 9/16 x 15/32
6	1732543	3	SPACER, Powdered Metal
7	1707335	3	GASKET
8	1713338A	3	HOUSING, Arbor Bottom w/Lube Fitting
9	1664847	26	SCREW, Hex Washer Head Taptite 5/16-18 x 3/4
10	1720560A	1	COVER, Arbor
11	1728998D	1	HOUSING ASSEMBLY, 50" (Red)
12	1931333	2	CARRIAGE BOLT, 5/16-18 x 3/4 G5
13	1724538A	1	BAFFLE, Blowout, Short
14	1931277	3	NUT, Hex Flange 5/16-18, Whiz Lock Small
15	1713619	3	WASHER, Cup
16	1713612	1	SHAFT, Arbor
17	1713196	3	SHIELD, Grass Lower Arbor, Heat Treated
18	1726453	3	BLADE, Mower 18.12" LG (Was 1708229)
19	1713089	3	WASHER, Hex 11/16 x 2
20	1656916	3	WASHER, Spring
21	2823471	3	CAPSCREW, Hex Head 7/16-14 x 1-1/4 G8
22	1713609	2	SHAFT, Arbor
23	1960698	1	CARRIAGE BOLT, 1/4-20 x 1 G5
24	1715673	1	COVER, Arbor
25	1960518	2	NUT, Push for 1/4 Diameter Thread
26	1960353	4	WASHER, 1/4
27	1704873	1	CLAMP, Wire
28	1919326	1	WASHER, 5/16
29	7101082	1	SPRING, Torsion, Chute
30	1920397	2	NUT, Hex Lock ESNA Light 1/4-20
31	1705449	1	DEFLECTOR
32	1706709	1	ROD, Deflector
33	1713613	2	HUB
34	1705115	1	PLUG
36	1713675	6	WASHER, Bellville
37	1960730	1	SCREW, Hex Head Serange Flange Taptite 5/16-18 x 2
38	1960633	1	CARRIAGE BOLT, 1/4-20 x 1-1/2 G5

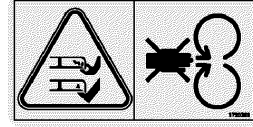
### Footnotes:



XXXXX TRACTORS  
DRIVE BELTS & MOWER BLADES

Transmission Belt	
Case	XXXXXX
Hydrex	XXXXXX
36" Mower	
Drive Belt	XXXXXX
Mower Blade - Left	XXXXXX
Mower Blade - Right	XXXXXX
44" Mower	
Drive Belt	XXXXXX
Drive Belt	XXXXXX
Mower Blade	XXXXXX
36" / 44" Ground-clearance Drive Belt	XXXXXX

For safety and reliability, make any genuine Simplicity Manufacturing, Inc. belt and blade, and make stamped on the part to your convenience of quality.

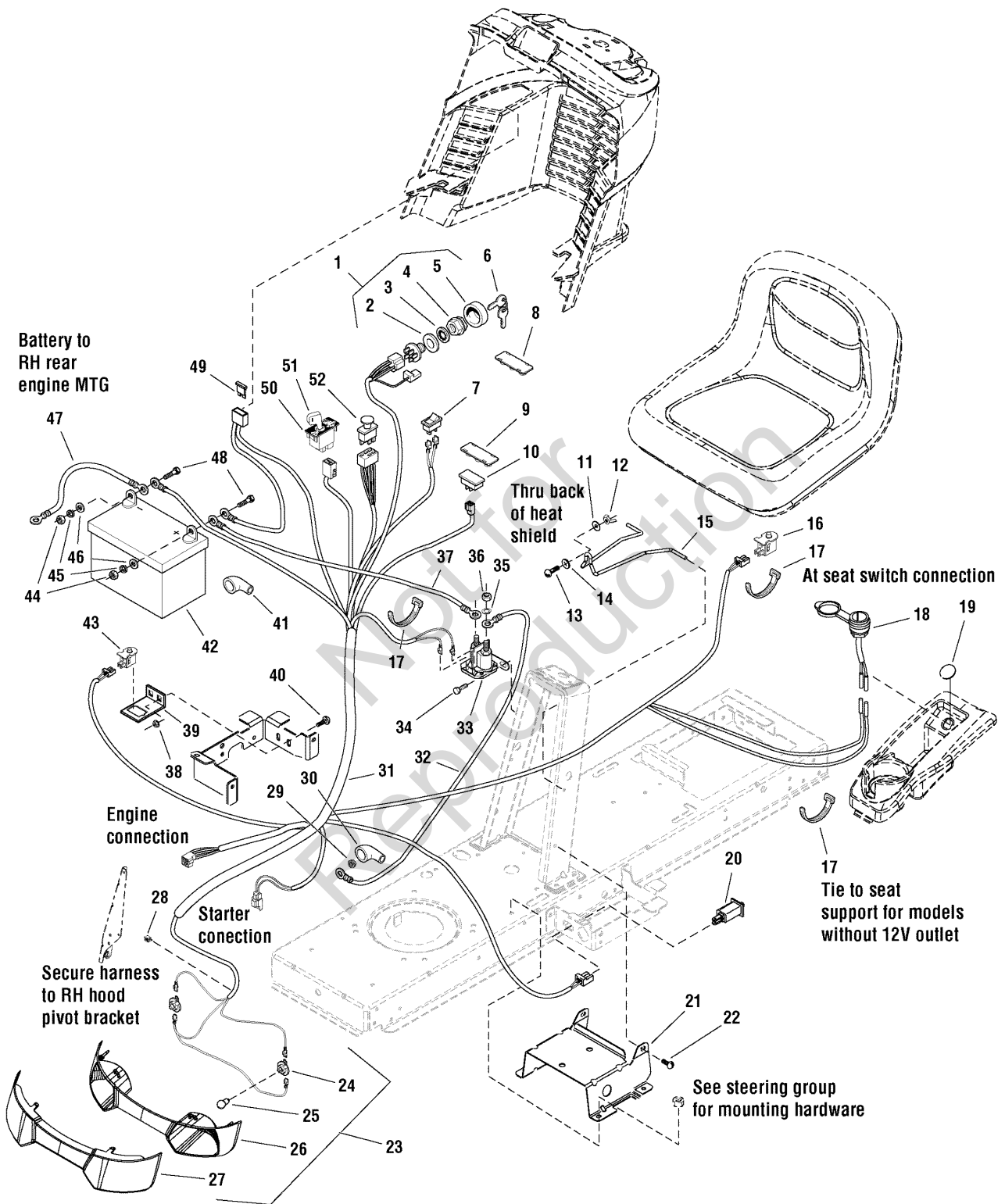


## Decals Group

Item	Part No	Qty	Description
1	1731392	1	DECAL, Snapper, LH Hood Stripe
1	7102192	1	DECAL, Snapper, LH Hood Stripe (Model 2690841 Only)
2	1731393	1	DECAL, Snapper, RH Hood Stripe
2	7102191	1	DECAL, Snapper, RH Hood Stripe (Model 2690841 Only)
3	1722806	1	DECAL, Ignition Switch Symbol, White/Black
4	1731419	1	DECAL, Steering Wheel Icon
4	1736872	1	DECAL, Steering Wheel Icon (Model 2690841 Only)
5	1730264	1	DECAL, Height of Cut Not Used on 40" Mower
6	1731955	1	DECAL, Snapper Rear Stripe, Silver/ 8.5LG
6	7102196	1	DECAL, Snapper Rear (Model 2690841 Only)
7	1730202	1	DECAL, Transmission Tow/ Release Lever
8	1730172	1	DECAL, Fuel Level
9	1730170	1	DECAL, Tunnel
9	1723175	1	DECAL, Safety Instructions (CE/Export)
9	1734027	1	DECAL, Tunnel (France Models Only)
9	1734027	1	DECAL, Safety Instructions (Used only on ACS models)(CE/Export)
10	1733250	1	DECAL, Belts,Blades (France Models Only)
10	1733251	1	DECAL, Belts, Blades
11	--	1	* DECAL, ID Plate
12	1731927	1	DECAL, LT200 18.5HP
12	1731928	1	DECAL, LT200 20HP
12	1731929	1	DECAL, LT200 22HP
13	1704277	1	DECAL, Danger, Chute in Place Not Used on 40" Mower
14	1732070	1	DECAL, Pinch Point Not Used on 40" Mower
15	1704276	1	DECAL, Danger, Hand Under Deck Not Used on 40" Mower
16	--	1	* DECAL, OPEI
17	1722787	1	DECAL, 38"
17	1731924	1	DECAL, 42"
17	1722789	1	DECAL, 44"
17	1722790	1	DECAL, 50"
18	1720389	1	DECAL, Hand Under Deck (CE/Export)

### Footnotes:

Note\* Not a serviceable part.

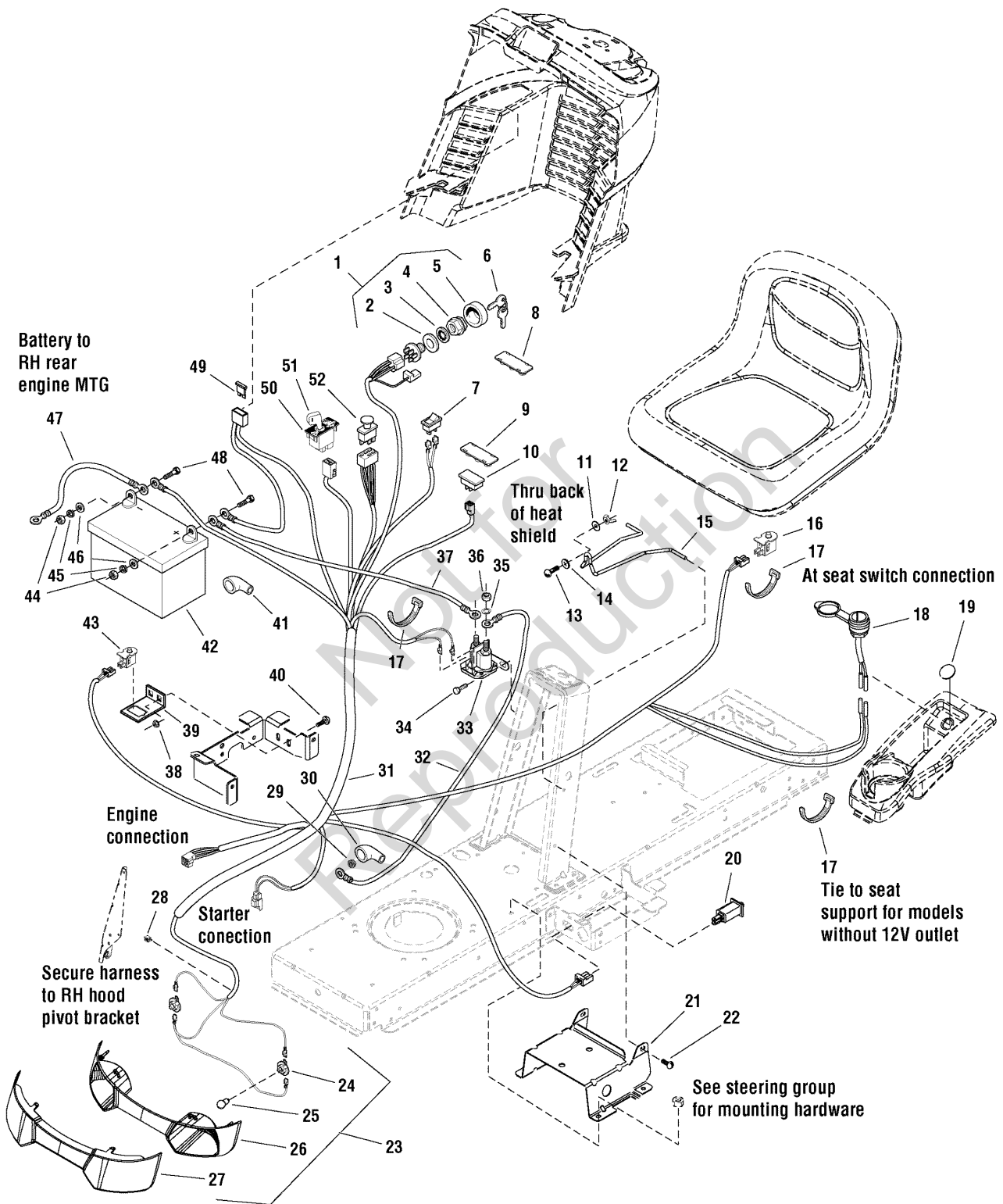




## Electrical Group

Item	Part No	Qty	Description
1	1716061	1	SWITCH ASSEMBLY, Ignition, 6-Pole (Includes Ref. 2, 3, 4 & 5)
2	2101025	1	WASHER, 5/8
3	1960547	1	LOCKWASHER, Internal Tooth, 5/8
4	1717549	1	NUT, Hex, Flange, 5/8-32
5	1717550	1	COVER, Ignition
6	1717163	1	IGNITION KEY (Set of 2)
7	1716951	1	SWITCH, Headlights, 2 Terminal
8	1722611	1	PLUG, Hole, Square
9	1729993	1	PLUG, Hour Meter (Kohler and B&S Single)
10	1728068	1	METER, Hour, LCD (B&S V-Twin Only)
11	1960353	1	WASHER, Plain, 1/4 (6 Total for Export)
12	2860293	1	NUT, Wing, 1/4-20
13	1931318	1	CARRIAGE BOLT, 1/4-20 x 7/8
14	1960518	1	NUT, Push On
15	1730007	1	HOLD DOWN, Battery
16	1732005	1	SWITCH, Push Button (NC)
17	2825094	3	TIE, Self Locking 7-5/16
18	7073090	1	OUTLET, 12 Volt DC Power
19	1732007	1	PLUG, Hole Models W/O 12V Adapter
20	1732006	1	SWITCH, Push Button (NO/NC)
21	1727282A	1	SUPPORT, Battery 12 GA
22	1930601	4	SCREW, Taptite, 5/16-18 x 5/8
23	1727296	1	HEADLIGHT ASSEMBLY (Includes Ref. 24, 25, 26 & 27)
24	1723451	2	SOCKET ASSEMBLY
25	1677371	2	BULB, 1141-12V 21CP
26	1728973	1	REFLECTOR, Headlight
27	1728974	1	LENS, Headlight
28	2834683	1	CLIP, Speed Wire
29	1960294	1	NUT, Hex, Flange, 1/4-20
30	1713535	1	COVER, Terminal
31	1728097	1	HARNESS, Wiring (Use on models with 12 Volt Outlet)
31	1739597	1	HARNESS, Wiring (Use on models without 12 Volt Outlet)
32	1721830	1	CABLE, Solenoid to Starter
33	1728963	1	SOLENOID
34	1925003	2	SCREW, Taptite, 1/4-20 x 1/2
35	2820426	2	LOCKWASHER, External Tooth, 5/16
36	2820263	2	NUT, Hex, 5/16-24 NF
37	1716549	1	CABLE, #6 x 10 Long, with 2 Ring Terminals, Battery to Solenoid
38	1931277	2	NUT, Hex, Flange Whizlock, 5/16-18
39	1728026A	1	SUPPORT, RMO Switch
40	1931333	2	CARRIAGE BOLT, 5/16-18 x 3/4
41	1677296	1	BOOT, Insulator
42	1722841	1	BATTERY, 12 Volt, 230CCA
42	1739150	1	BATTERY, 12 Volt, 230CCA (CE/Export)

### Footnotes:



## Electrical Group

---

Item	Part No	Qty	Description
43	1732004	1	SWITCH, Push Button (NO), Reverse Pedal
44	2816622	2	NUT, Hex, Full, 1/4-20
45	2816964	2	LOCKWASHER, 1/4
46	2821319	2	WASHER, 1/4 I.D.
47	1713163	1	CABLE, Battery to Ground
48	2823341	2	CAPSCREW, Hex Head, 1/4-20 x 3/4
49	1731957	1	FUSE, Wiring Harness
50	1726556	1	SWITCH, RMO Module Only
51	1727185	1	KEY, w/Hang Tag for RMO Module
52	1722887	1	SWITCH, PTO, Push/Pull Symbols

Not for  
Reproduction

### Footnotes:





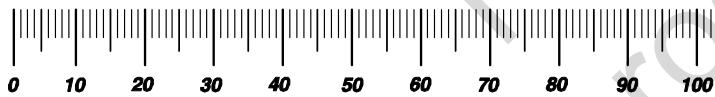


# Hardware Identification & Torque Specifications

Torque Specification Chart								
FOR STANDARD METRIC MACHINE HARDWARE (Tolerance ± 20%)								
Property Class	5.6		8.8		10.9		12.9	
	Class 5.6		Class 8.8		Class 10.9		Class 12.9	
Size Of Hardware	in/lbs		in/lbs		in/lbs		in/lbs	
	ft/lbs	Nm.	ft/lbs	Nm.	ft/lbs	Nm.	ft/lbs	Nm.
M3	5.88	.56	13.44	1.28	19.2	1.80	22.92	2.15
M4	13.44	1.28	30.72	2.90	43.44	4.10	52.56	4.95
M5	26.4	2.50	60.96	5.75	5.97	8.10	7.15	9.7
M6	44.64	4.3	7.3	9.9	10.3	14	12.1	16.5
M7	5.2	7.1	12.1	16.5	16.9	23	19.9	27
M8	7.7	10.5	17.7	24	25	34	29	40
M10	15	21	35	48	50	67	59	81
M12	26	36	61	83	86.2	117	103	140
M14	42	58	101	132	136	185	162	220
M16	64	88	147	200	210	285	250	340
M18	89	121	202	275	287	390	346	470
M20	126	171	290	390	405	550	486	660
M22	169	230	390	530	559	745	656	890
M24	217	295	497	375	708	960	840	1140
M27	320	435	733	995	1032	1400	1239	1680
M30	435	590	995	1350	1401	1900	1681	2280
M33	590	800	1349	1830	1902	2580	2278	3090
M36	759	1030	1740	2360	2441	3310	2935	3980
M39	988	1340	2249	3050	3163	4290	3798	5150

Torque Specification Chart						
FOR STANDARD MACHINE HARDWARE (Tolerance ± 20%)						
Hardware Grade	No Marks		SAE Grade 5		SAE Grade 8	
	SAE Grade 2		SAE Grade 5		SAE Grade 8	
Size Of Hardware	in/lbs		in/lbs		in/lbs	
	ft/lbs	Nm.	ft/lbs	Nm.	ft/lbs	Nm.
8-32	19	2.1	30	3.4	41	4.6
8-36	20	2.3	31	3.5	43	4.9
10-24	27	3.1	43	4.9	60	6.8
10-32	31	3.5	49	5.5	68	7.7
1/4-20	66	7.6	8	10.9	12	16.3
1/4-28	76	8.6	10	13.6	14	19.0
5/16-18	11	15.0	17	23.1	25	34.0
5/16-24	12	16.3	19	25.8	29	34.0
3/8-16	20	27.2	30	40.8	45	61.2
3/8-24	23	31.3	35	47.6	50	68.0
7/16-14	30	40.8	50	68.0	70	95.2
7/16-20	35	47.6	55	74.8	80	108.8
1/2-13	50	68.0	75	102.0	110	149.6
1/2-20	55	74.8	90	122.4	120	163.2
9/16-12	65	88.4	110	149.6	150	204.0
9/16-18	75	102.0	120	163.2	170	231.2
5/8-11	90	122.4	150	204.0	220	299.2
5/8-18	100	136	180	244.8	240	326.4
3/4-10	160	217.6	260	353.6	386	525.0
3/4-16	180	244.8	300	408.0	420	571.2
7/8-9	140	190.4	400	544.0	600	816.0
7/8-14	155	210.8	440	598.4	660	897.6
1-8	220	299.2	580	788.8	900	1,244.0
1-12	240	326.4	640	870.4	1,000	1,360.0

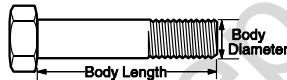
The guides and ruler furnished below are designed to help you select the appropriate hardware.



Nut, M8

Thread Diameter (mm)  
Inside Diameter (in)  
Threads per inch

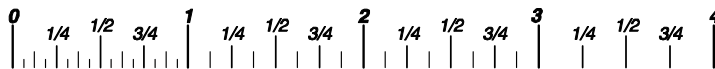
Nut, 1/2-16



Screw, M8- 1.25 x 25

Thread Diameter (mm)  
Body Diameter  
Distance between threads (mm)  
Threads per inch  
Body Length (mm)  
Body Length (in)

Screw, 1/2- 16 x 2



## Standard Hardware Sizing

When a washer or nut is identified as 1/2" (M8), this is the *Nominal size*, meaning the *inside diameter* is 1/2 inch (8mm metric thread diameter); if a second number is present it represents the *threads per inch* (distance between threads).

When bolt or capscrew is identified as 1/2 - 16 x 2" (M8 - 1.25 x 50), this means the *Nominal size*, or body diameter is 1/2 inch (8mm metric thread diameter), the second number, 16, represents the *threads per inch*, (1.25 thread diameter). The final number is the body length of the bolt or screw, 2 inches (50mm).

## NOTES

- These torque values are to be used for all hardware excluding: locknuts, self-tapping screws, thread forming screws, sheet metal screws and socket head setscrews.
- Recommended seating torque values for locknuts:
  - for prevailing torque locknuts - use 65% of grade5 torques.
  - for flange whizlock nuts and screws - use 135% of grade 5 torques.
- Unless otherwise noted on assembly drawings, all torque values must meet this specification.

## Common Hardware Types

Hex Head Capscrew



Washer



Lockwasher



Carriage Bolt



Hex Nut



## Wrench & Fastener Size Guide

1/4" Bolt or Nut Wrench—7/16"	5/16" Bolt or Nut Wrench—1/2"	3/8" Bolt or Nut Wrench—9/16"	7/16" Bolt or Nut Wrench (Bolt)—5/8" Wrench (Nut)—11/16"	1/2" Bolt or Nut Wrench—3/4"
M6 Bolt or Nut Wrench—10mm	M8 Bolt or Nut Wrench—13mm	M10 Bolt or Nut Wrench—17mm	M12 Bolt or Nut Wrench—19mm	M14 Bolt or Nut Wrench—22mm

*Parts Manual for*

# **SNAPPER®**

## **ELECTRIC CLUTCH HYDRO DRIVE RMO & ACS TRACTORS LT-200 SERIES**

Not for  
Reproduction

IT IS THE POLICY OF BRIGGS & STRATTON CORP TO IMPROVE ITS PRODUCTS WHENEVER IT IS POSSIBLE AND PRACTICAL TO DO SO. WE RESERVE THE RIGHT TO MAKE CHANGES OR ADD IMPROVEMENTS AT ANY TIME WITHOUT INCURRING ANY OBLIGATION TO MAKE SUCH CHANGES ON PRODUCTS

**Briggs & Stratton Yard Power Products Group**

535 Macon Road  
McDonough, GA, 30253 U.S.A.  
800-935-2967

[www.snapper.com](http://www.snapper.com)

Copyright © 2010 Briggs & Stratton Corporation  
Milwaukee, WI USA. All Rights Reserved

**Manual No. 7006474**

**Revision: B 10/7/2010**